

any bonus due thereon to the Louisiana State Mineral Board, nor shall the Louisiana State Mineral Board be obligated to refund any consideration paid by the Lessee prior to such modification, cancellation, or abrogation, including, but not limited to, bonuses, rents and royalties.

NOTE: The State of Louisiana does hereby reserve, and this lease shall be subject to, the imprescriptible right of surface use in the nature of a servitude in favor of the Department of Natural Resources, including its Offices and Commissions, for the sole purpose of implementing, constructing, servicing and maintaining approved coastal zone management and/or restoration projects. Utilization of any and all rights derived under this lease by the mineral lessee, its agents, successors or assigns, shall not interfere with nor hinder the reasonable surface use by the Department of Natural Resources, its Offices or Commissions, as hereinabove reserved.

Applicant: John J. Prat

Bidder	Cash Payment	Price / Acre	Rental	Oil	Gas	Other

T 12 S - R 4 E

77

48

49

50

68

Belmont  
(Hester PO)

Hester  
Plantations

Mt Olive Ch.

CENTRAL

BELMONT  
GREVASSE

TR 34368  
425 ± ACS.  
APR, 2002

RIVER

Mile  
152

Welham  
Plantation

Vacheria  
and Gas Field

MISSISSIPPI

LEVEE

Waterworks

Magnolia  
High Sch

Oak Alley  
Plantations

St Joseph  
Plantation

T 12 S - R 17 E

P. O. B.  
X=2,174,220.00  
Y=486,440.00

St James  
Plantation

Batree

Oil Wells

Laurel Ridge  
Plantation

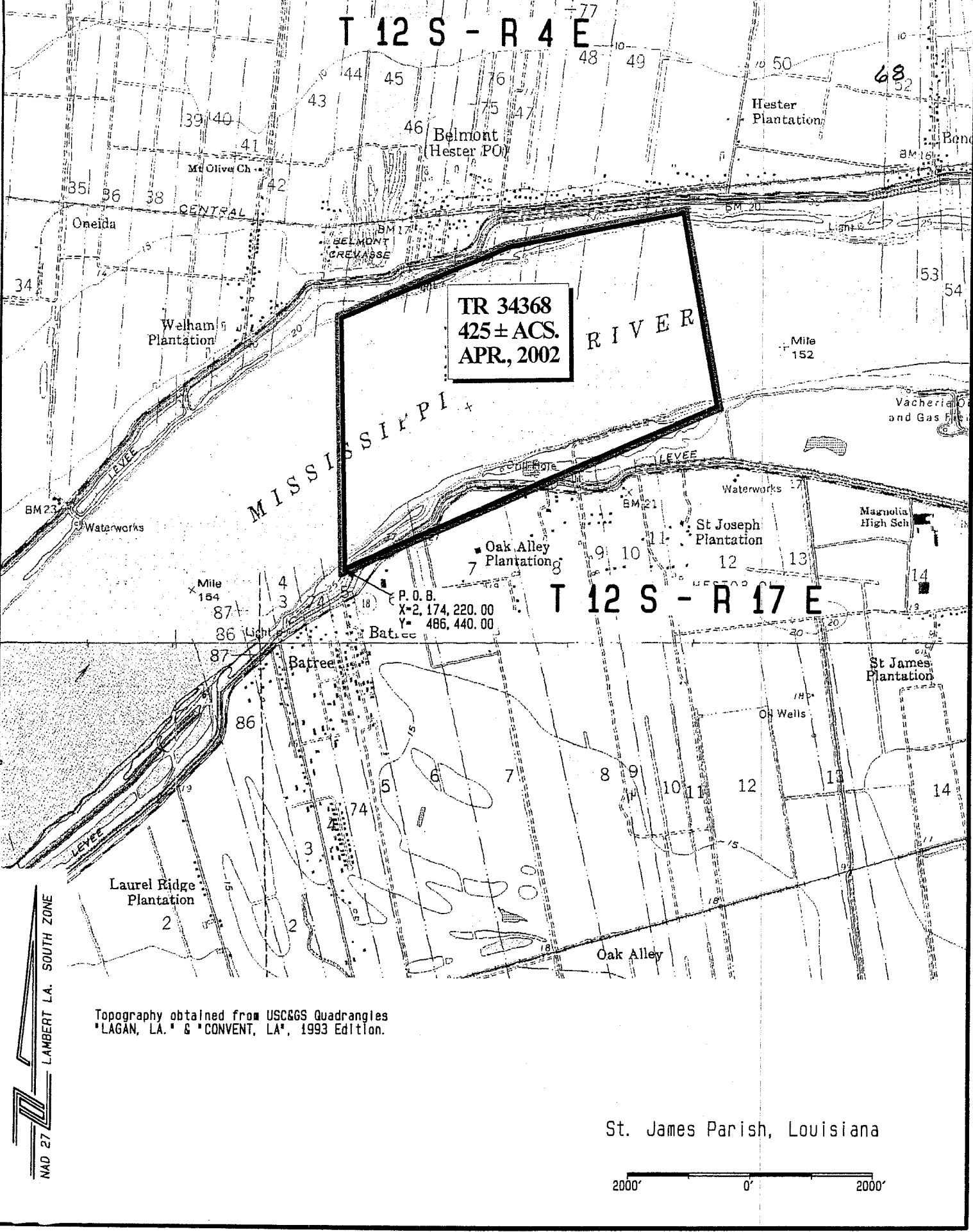
Oak Alley

Topography obtained from USC&GS Quadrangles  
LAGAN, LA. & CONVENT, LA., 1993 Edition.

St. James Parish, Louisiana

2000' 0' 2000'

NAD 27  
LAMBERT LA. SOUTH ZONE



**TRACT 34369 - St. James Parish, Louisiana**

All of the lands now or formerly constituting the beds and bottoms of all water bodies of every nature and description and all islands and other lands formed by accretion or reliction, except tax lands, owned by and not under mineral lease from the State of Louisiana on April 10, 2002, situated in St. James Parish, Louisiana, within the following described boundaries: Beginning at a point having Coordinates of X = 2,174,220.00 and Y = 486,440.00; thence South 46 degrees 06 minutes 39 seconds West 5,106.27 feet to a point having Coordinates of X = 2,170,540.00 and Y = 482,900.00; thence North 31 degrees 50 minutes 12 seconds West 3,601.89 feet to a point having Coordinates of X = 2,168,640.00 and Y = 485,960.00; thence North 42 degrees 56 minutes 53 seconds East 4,344.42 feet to a point having Coordinates of X = 2,171,600.00 and Y = 489,140.00; thence North 62 degrees 11 minutes 09 seconds East 2,871.79 feet to a point having Coordinates of X = 2,174,140.00 and Y = 490,480.00; thence South 01 degrees 08 minutes 04 seconds East 4,040.79 feet to the point of beginning, containing approximately 464 acres, as shown outlined on a plat on file in the Office of Mineral Resources, Department of Natural Resources, as provided by the applicant. All bearings, distances and coordinates are based on Louisiana Coordinate System of 1927 (South Zone).

NOTE: The above description of the tract nominated for lease has been provided exclusively by the party nominating the tract for lease. The Louisiana State Mineral Board makes no representation as to the accuracy of the description of the nominated tract or its suitability for lease. The Louisiana State Mineral Board has made no inspection of the nominated tract for the existence of conflicting leases, operating agreements, private claims or other existing or future obligations or conditions which may affect all or any portion of the nominated tract or its suitability for lease.

Maps depicting the nominated tract, containing the bearings, distances and coordinates of the nominated tract based on the Louisiana Coordinate System of 1927, North or South Zone, as applicable, are available for public inspection and review at the offices of the Louisiana State Mineral Board from 10:00 a.m. to 3:00 p.m. Monday - Friday.

In the event of conflict between the description of the nominated tract set forth above and the description of the nominated property as contained on the maps maintained at the offices of the Louisiana State Mineral Board, the Louisiana State Mineral Board maps shall prevail and shall provide the final property description of the lease to be awarded of the nominated tract.

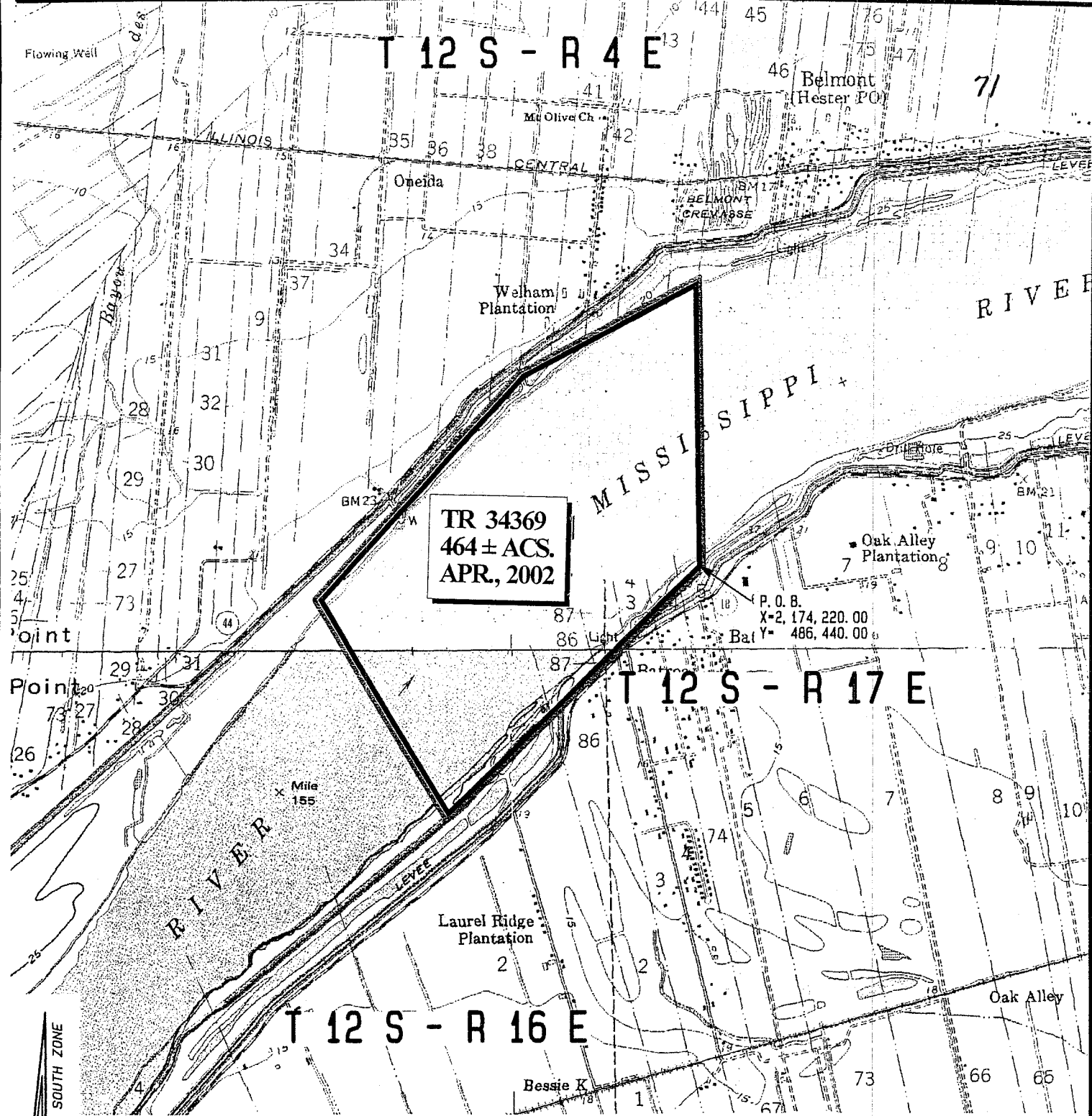
Any mineral lease of the nominated tract by the Louisiana State Mineral Board shall be without warranty of any kind, either express, implied, or statutory, including, but not limited to, the implied warranties or merchantability and fitness for a particular purpose. Should the mineral lease of the nominated tract awarded by the Louisiana State Mineral Board be subsequently modified, cancelled or abrogated due to the existence of conflicting leases, operating agreements, private claims or other existing of future obligations or conditions which may affect all or any portion of the leased tract, it shall not relieve the Lessee of the obligation to pay

any bonus due thereon to the Louisiana State Mineral Board, nor shall the Louisiana State Mineral Board be obligated to refund any consideration paid by the Lessee prior to such modification, cancellation, or abrogation, including, but not limited to, bonuses, rents and royalties.

NOTE: The State of Louisiana does hereby reserve, and this lease shall be subject to, the imprescriptible right of surface use in the nature of a servitude in favor of the Department of Natural Resources, including its Offices and Commissions, for the sole purpose of implementing, constructing, servicing and maintaining approved coastal zone management and/or restoration projects. Utilization of any and all rights derived under this lease by the mineral lessee, its agents, successors or assigns, shall not interfere with nor hinder the reasonable surface use by the Department of Natural Resources, its Offices or Commissions, as hereinabove reserved.

Applicant: John J. Prat

Bidder	Cash Payment	Price / Acre	Rental	Oil	Gas	Other

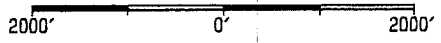


**TR 34369**  
**464 ± ACS.**  
**APR, 2002**

Topography obtained from USC&GS Quadrangles  
 "LAGAN, LA." & "CONVENT, LA", 1993 Edition.

NAD 27  
 LAMBERT LA. SOUTH ZONE

St. James Parish, Louisiana



**TRACT 34370 - St. James Parish, Louisiana**

All of the lands now or formerly constituting the beds and bottoms of all water bodies of every nature and description and all islands and other lands formed by accretion or reliction, except tax lands, owned by and not under mineral lease from the State of Louisiana on April 10, 2002, situated in St. James Parish, Louisiana, within the following described boundaries: Beginning at a point having Coordinates of X = 2,170,540.00 and Y = 482,900.00; thence South 49 degrees 44 minutes 52 seconds West 4,271.44 feet to a point having Coordinates of X = 2,167,280.00 and Y = 480,140.00; thence North 29 degrees 38 minutes 40 seconds West 2,830.48 feet to a point having Coordinates of X = 2,165,880.00 and Y = 482,600.00; thence North 39 degrees 24 minutes 02 seconds East 4,348.24 feet to a point having Coordinates of X = 2,168,640.00 and Y = 485,960.00; thence South 31 degrees 50 minutes 12 seconds East 3,601.89 feet to the point of beginning, containing approximately 273 acres, as shown outlined on a plat on file in the Office of Mineral Resources, Department of Natural Resources, as provided by the applicant. All bearings, distances and coordinates are based on Louisiana Coordinate System of 1927 (South Zone).

NOTE: The above description of the tract nominated for lease has been provided exclusively by the party nominating the tract for lease. The Louisiana State Mineral Board makes no representation as to the accuracy of the description of the nominated tract or its suitability for lease. The Louisiana State Mineral Board has made no inspection of the nominated tract for the existence of conflicting leases, operating agreements, private claims or other existing or future obligations or conditions which may affect all or any portion of the nominated tract or its suitability for lease.

Maps depicting the nominated tract, containing the bearings, distances and coordinates of the nominated tract based on the Louisiana Coordinate System of 1927, North or South Zone, as applicable, are available for public inspection and review at the offices of the Louisiana State Mineral Board from 10:00 a.m. to 3:00 p.m. Monday - Friday.

In the event of conflict between the description of the nominated tract set forth above and the description of the nominated property as contained on the maps maintained at the offices of the Louisiana State Mineral Board, the Louisiana State Mineral Board maps shall prevail and shall provide the final property description of the lease to be awarded of the nominated tract.

Any mineral lease of the nominated tract by the Louisiana State Mineral Board shall be without warranty of any kind, either express, implied, or statutory, including, but not limited to, the implied warranties or merchantability and fitness for a particular purpose. Should the mineral lease of the nominated tract awarded by the Louisiana State Mineral Board be subsequently modified, cancelled or abrogated due to the existence of conflicting leases, operating agreements, private claims or other existing of future obligations or conditions which may affect all or any portion of the leased tract, it shall not relieve the Lessee of the obligation to pay any bonus due thereon to the Louisiana State Mineral Board, nor shall the Louisiana State Mineral Board be obligated to refund any consideration

paid by the Lessee prior to such modification, cancellation, or abrogation, including, but not limited to, bonuses, rents and royalties.

NOTE: The State of Louisiana does hereby reserve, and this lease shall be subject to, the imprescriptible right of surface use in the nature of a servitude in favor of the Department of Natural Resources, including its Offices and Commissions, for the sole purpose of implementing, constructing, servicing and maintaining approved coastal zone management and/or restoration projects. Utilization of any and all rights derived under this lease by the mineral lessee, its agents, successors or assigns, shall not interfere with nor hinder the reasonable surface use by the Department of Natural Resources, its Offices or Commissions, as hereinabove reserved.

Applicant: John J. Prat

Bidder	Cash Payment	Price / Acre	Rental	Oil	Gas	Other

T 12 S - R 4 E

MISSISSIPPI

St Michael  
Sch  
St Michael  
Cem

Welham  
Plantation

BM 19

BM 23

Waterworks

Mile  
154

College Point

Batree

College Point

Batree

TR 34370  
273 ± ACS.  
APR, 2002

P. O. B.  
X- 2,170,540.00  
Y- 482,900.00

Laurel Ridge  
Plantation

file  
57

MISSISSIPPI

Pikes Peak

Bessie K

T 12 S - R 16 E

Lagan

NAD 27  
LAMBERT LA. SOUTH ZONE

Topography obtained from USC&GS Quadrangles  
"LAGAN, LA." & "CONVENT, LA", 1993 Edition.

St. James Parish, Louisiana

2000' 0' 2000'