

P.O.B.
X= 1,714,383.25
Y= 565,857.99

X= 1,710,534.47
Y= 562,690.00

X= 1,715,267.18
Y= 565,164.97

TR 34365
7 ± ACS.
APR, 2002

X= 1,712,260.36
Y= 562,690.00

T9S-R2E
T10S-R2E

ACADIA AND LAFAYETTE PARISHES

RAYNE

THAYER

Oil Well

Substa

59

35

34

34

36

49

37

4

33

33

34

34

34

34

34

34

34

34

34

34

2000'

0'

2000'

2000'

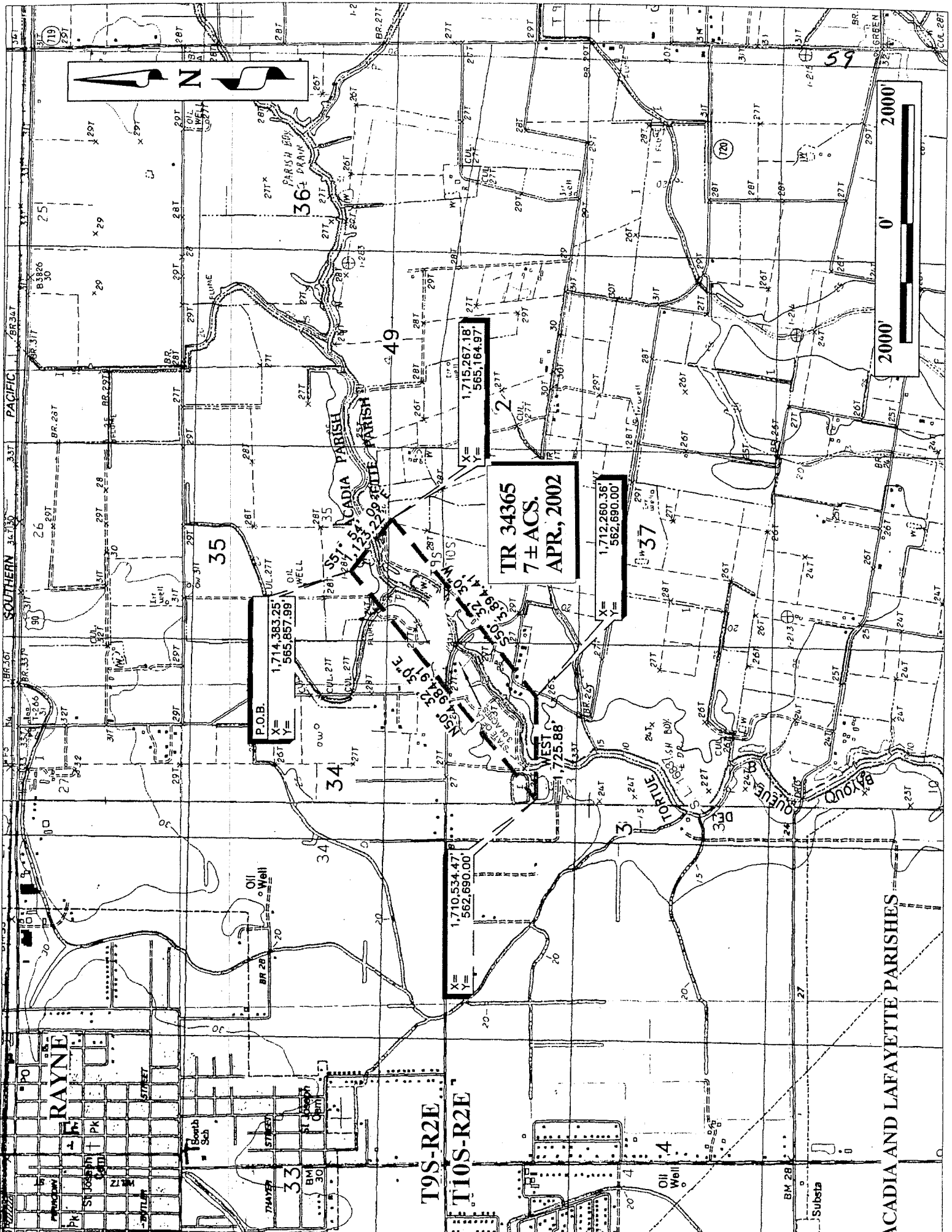
2000'

2000'

2000'

2000'

2000'



TRACT 34366 - Iberville and St. Martin Parishes, Louisiana

All of the lands now or formerly constituting the beds and bottoms of all water bodies of every nature and description and all islands and other lands formed by accretion or reliction, except tax lands, owned by and not under mineral lease from the State of Louisiana on April 10, 2002, situated in Iberville and St. Martin Parishes, Louisiana, within the following described boundaries: Beginning at an interior corner of State Lease No. 15605, as amended, having Coordinates of X = 1,907,491.51 and Y = 610,928.75; thence South 89 degrees 54 minutes 30 seconds West 840.00 feet along the interior boundary of said State Lease No. 15605 to an additional interior corner having Coordinates of X = 1,906,651.51 and Y = 610,927.40; thence North 00 degrees 05 minutes 30 seconds West 1,320.00 feet along the interior boundary of said State Lease No. 15605 to an additional interior corner having Coordinates of X = 1,906,649.40 and Y = 612,247.40; thence North 89 degrees 54 minutes 30 seconds East 840.00 feet along the interior boundary of said State Lease No. 15605 to an additional interior corner having Coordinates of X = 1,907,489.40 and Y = 612,248.75; thence South 00 degrees 05 minutes 30 seconds East 1,320.00 feet along the interior boundary of said State Lease No. 15605 to the point of beginning, containing approximately 2.38 acres, as shown outlined on a plat on file in the Office of Mineral Resources, Department of Natural Resources, as provided by the applicant. All bearings, distances and coordinates are based on Louisiana Coordinate System of 1927 (South Zone).

NOTE: The above description of the tract nominated for lease has been provided exclusively by the party nominating the tract for lease. The Louisiana State Mineral Board makes no representation as to the accuracy of the description of the nominated tract or its suitability for lease. The Louisiana State Mineral Board has made no inspection of the nominated tract for the existence of conflicting leases, operating agreements, private claims or other existing or future obligations or conditions which may affect all or any portion of the nominated tract or its suitability for lease.

Maps depicting the nominated tract, containing the bearings, distances and coordinates of the nominated tract based on the Louisiana Coordinate System of 1927, North or South Zone, as applicable, are available for public inspection and review at the offices of the Louisiana State Mineral Board from 10:00 a.m. to 3:00 p.m. Monday - Friday.

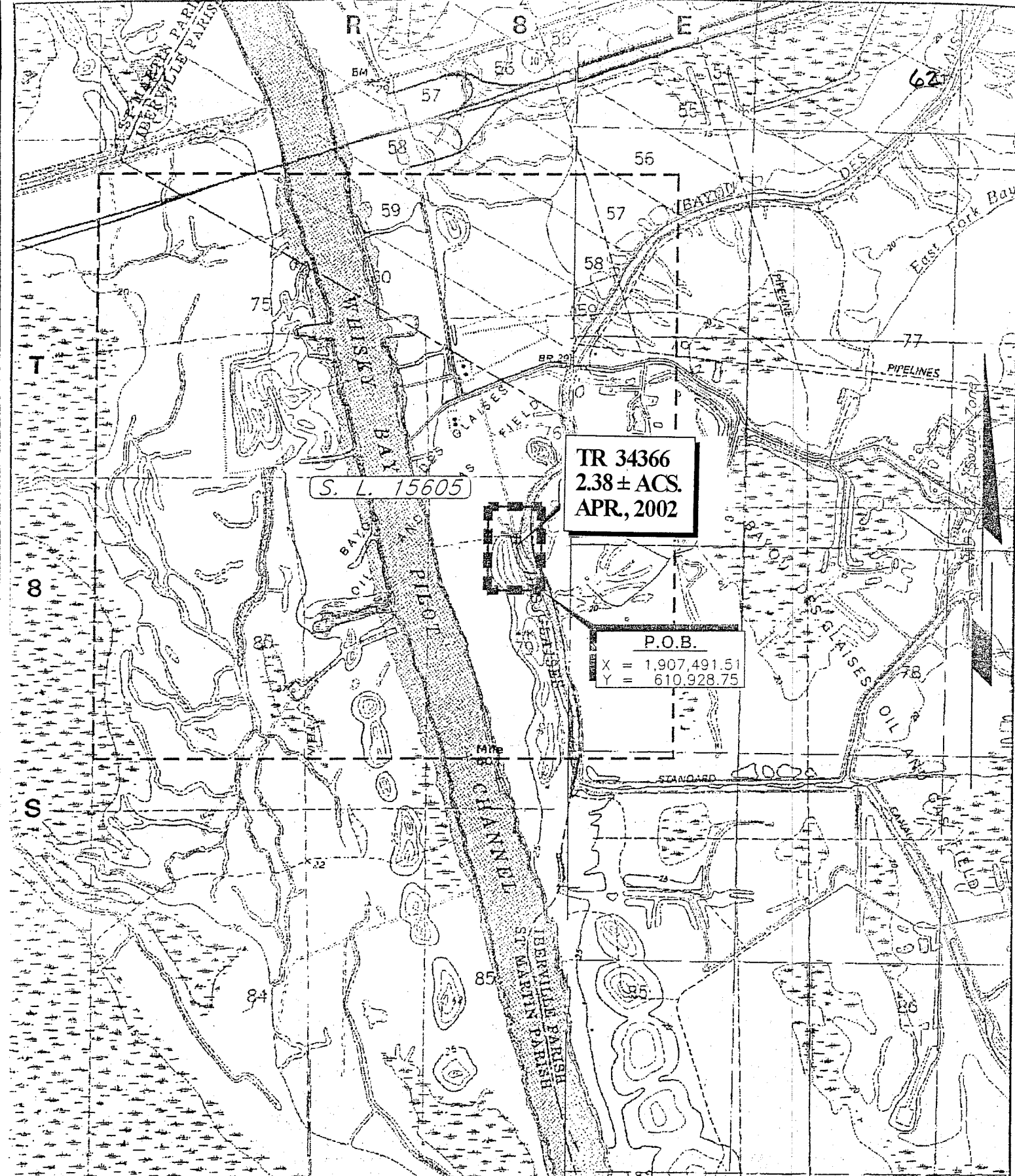
In the event of conflict between the description of the nominated tract set forth above and the description of the nominated property as contained on the maps maintained at the offices of the Louisiana State Mineral Board, the Louisiana State Mineral Board maps shall prevail and shall provide the final property description of the lease to be awarded of the nominated tract.

Any mineral lease of the nominated tract by the Louisiana State Mineral Board shall be without warranty of any kind, either express, implied, or statutory, including, but not limited to, the implied warranties or merchantability and fitness for a particular purpose. Should the mineral lease of the nominated tract awarded by the Louisiana State Mineral Board be subsequently modified, cancelled or abrogated due to the existence of

conflicting leases, operating agreements, private claims or other existing of future obligations or conditions which may affect all or any portion of the leased tract, it shall not relieve the Lessee of the obligation to pay any bonus due thereon to the Louisiana State Mineral Board, nor shall the Louisiana State Mineral Board be obligated to refund any consideration paid by the Lessee prior to such modification, cancellation, or abrogation, including, but not limited to, bonuses, rents and royalties.

Applicant: Oleum Operating Company, L.C.

Bidder	Cash Payment	Price / Acre	Rental	Oil	Gas	Other



ST. MARTIN & IBERVILLE PARISHES, LOUISIANA

SCALE : 1" = 2000'

TRACT 34367 - St. Mary Parish, Louisiana

All of the lands now or formerly constituting the beds and bottoms of all water bodies of every nature and description and all islands and other lands formed by accretion or reliction, except tax lands, owned by and not under mineral lease from the State of Louisiana on April 10, 2002, situated in St. Mary Parish, Louisiana, within the following described boundaries: Beginning at a point having Lambert Plane Coordinates of X = 1,993,969.50 and Y = 394,965.23; thence North 83 degrees 24 minutes 46 seconds East 11,533.92 feet to a point having Lambert Plane Coordinates of X = 2,005,427.28 and Y = 396,288.32; thence South 7 degrees 39 minutes 24 seconds East approximately 1732.79 feet to the intersection with the Approximate Meander Line of 1857 also being the Northerly boundary of State Lease 17291; thence along said Northerly boundary of said State Lease 17291 the following courses: Westerly, Southwesterly and Southerly to a point having Lambert Plane Coordinates of X = 2,004,315.00 and Y = 393,500.00; thence West 2297.40 feet to a point having Lambert Plane Coordinates of X = 2,002,017.60 and Y = 393,500.00; thence South 484.75 feet to a Point Q of Tract 1 as shown on "PLAT OF SURVEY OF BOUNDARY LINE BETWEEN LANDS COVERED AND AFFECTED BY STATE LEASE NO. 2963 AND ABUTTING AND CONTIGUOUS LANDS COVERED AND AFFECTED BY ZENOR-COCKRELL, ET AL, LEASES AND AN UNLEASED TRACT OWNED BY THE STATE OF LOUISIANA", said plat being dated February 4, 1976, revised June 2, 1976. Said Point Q having Lambert Plane Coordinates of X = 2,002,017.60 and Y = 393,015.21; thence South 10 degrees 30 minutes 00 seconds East 500.00 feet along the easterly boundary of said Tract 1 to a point having Lambert Plane Coordinates of X = 2,002,108.72 and Y = 392,523.58; thence continue Southwesterly along said boundary of State Lease 17291 to the intersection of the West boundary of the Northern Portion of State Lease 1685 as amended, thence Southerly along said West boundary of said State Lease 1685 as amended, to a point having a Coordinate of Y = 389,863.26; thence West 3539.73 feet to the intersection with the East boundary of State Lease 2963 as amended, having Lambert Plane Coordinates of X = 1,995,877.92 and Y = 389,863.26; thence continue along said East boundary of said State Lease 2963 as amended, to a point to the point having Lambert Plane Coordinates of X = 1,995,838.64 and Y = 390,422.07; thence along the North boundary of said State Lease 2963 as amended, to a point of intersection of a North-South Line having a Coordinate of X = 1,993,969.50; thence North 4,071.09 feet to the point of beginning, containing approximately 689.00 acres, as shown outlined on a plat on file in the Office of Mineral Resources, Department of Natural Resources, as provided by the applicant. All bearings, distances and coordinates are based on Louisiana Coordinate System of 1927 (South Zone).

NOTE: The above description of the tract nominated for lease has been provided exclusively by the party nominating the tract for lease. The Louisiana State Mineral Board makes no representation as to the accuracy of the description of the nominated tract or its suitability for lease. The Louisiana State Mineral Board has made no inspection of the nominated tract for the existence of conflicting leases, operating agreements, private claims or other existing or future obligations or conditions which

may affect all or any portion of the nominated tract or its suitability for lease.

Maps depicting the nominated tract, containing the bearings, distances and coordinates of the nominated tract based on the Louisiana Coordinate System of 1927, North or South Zone, as applicable, are available for public inspection and review at the offices of the Louisiana State Mineral Board from 10:00 a.m. to 3:00 p.m. Monday - Friday.

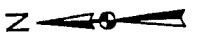
In the event of conflict between the description of the nominated tract set forth above and the description of the nominated property as contained on the maps maintained at the offices of the Louisiana State Mineral Board, the Louisiana State Mineral Board maps shall prevail and shall provide the final property description of the lease to be awarded of the nominated tract.

Any mineral lease of the nominated tract by the Louisiana State Mineral Board shall be without warranty of any kind, either express, implied, or statutory, including, but not limited to, the implied warranties or merchantability and fitness for a particular purpose. Should the mineral lease of the nominated tract awarded by the Louisiana State Mineral Board be subsequently modified, cancelled or abrogated due to the existence of conflicting leases, operating agreements, private claims or other existing of future obligations or conditions which may affect all or any portion of the leased tract, it shall not relieve the Lessee of the obligation to pay any bonus due thereon to the Louisiana State Mineral Board, nor shall the Louisiana State Mineral Board be obligated to refund any consideration paid by the Lessee prior to such modification, cancellation, or abrogation, including, but not limited to, bonuses, rents and royalties.

NOTE: The State of Louisiana does hereby reserve, and this lease shall be subject to, the imprescriptible right of surface use in the nature of a servitude in favor of the Department of Natural Resources, including its Offices and Commissions, for the sole purpose of implementing, constructing, servicing and maintaining approved coastal zone management and/or restoration projects. Utilization of any and all rights derived under this lease by the mineral lessee, its agents, successors or assigns, shall not interfere with nor hinder the reasonable surface use by the Department of Natural Resources, its Offices or Commissions, as hereinabove reserved.

Applicant: Lee J. Sonnier, III

Bidder	Cash Payment	Price / Acre	Rental	Oil	Gas	Other



T15S-R11E

P.O.B.
X=1,993,969.50
Y=394,965.23

SIX MILE

11,533.91'

APPROXIMATE MEANDER LINE 1857

APPROXIMATE 1,732.79'

X=2,002,017.60
Y=393,500.00

Part of survey of boundary line between...
Zone of...
contiguous...
of the...
of...

X=1,995,838.64
Y=390,422.07

X=2,004,315.00
Y=393,500.00

X=2,002,017.60
Y=393,015.21

X=1,993,969.50

X=2,002,108.72
Y=392,523.58

C H A F A L A Y

S.L. 17291

S.L. 2963

X=1,995,877.92
Y=389,863.26

Y=389,863.26

S.L. 1685

ST. MARY PARISH
INLAND TRACT
SCALE: 1"=2000'

TR 34367
689 ± ACS.
APR, 2002

OUTLET

OIL

65 GAS

42

47

48

49

50

51

52

53

54

55

56

57

58

59

60

61

62

63

64

65

66

67

68

69

70

71

72

73

74

75

76

77

78

79

80

81

82

83

84

85

86

87

88

89

90

91

92

93

94

95

96

97

98

99

100

TRACT 34368 - St. James Parish, Louisiana

All of the lands now or formerly constituting the beds and bottoms of all water bodies of every nature and description and all islands and other lands formed by accretion or reliction, except tax lands, owned by and not under mineral lease from the State of Louisiana on April 10, 2002, situated in St. James Parish, Louisiana, within the following described boundaries: Beginning at a point having Coordinates of X = 2,174,220.00 and Y = 486,440.00; thence North 01 degrees 08 minutes 04 seconds West 4,040.79 feet to a point having Coordinates of X = 2,174,140.00 and Y = 490,480.00; thence North 67 degrees 29 minutes 47 seconds East 3,030.78 feet to a point having Coordinates of X = 2,176,940.00 and Y = 491,640.00; thence North 78 degrees 55 minutes 17 seconds East 2,914.31 feet to a point having Coordinates of X = 2,179,800.00 and Y = 492,200.00; thence South 10 degrees 35 minutes 50 seconds East 3,153.79 feet to a point having Coordinates of X = 2,180,380.00 and Y = 489,100.00; thence South 66 degrees 38 minutes 40 seconds West 6,709.78 feet to the point of beginning, containing approximately 425 acres, as shown outlined on a plat on file in the Office of Mineral Resources, Department of Natural Resources, as provided by the applicant. All bearings, distances and coordinates are based on Louisiana Coordinate System of 1927 (South Zone).

NOTE: The above description of the tract nominated for lease has been provided exclusively by the party nominating the tract for lease. The Louisiana State Mineral Board makes no representation as to the accuracy of the description of the nominated tract or its suitability for lease. The Louisiana State Mineral Board has made no inspection of the nominated tract for the existence of conflicting leases, operating agreements, private claims or other existing or future obligations or conditions which may affect all or any portion of the nominated tract or its suitability for lease.

Maps depicting the nominated tract, containing the bearings, distances and coordinates of the nominated tract based on the Louisiana Coordinate System of 1927, North or South Zone, as applicable, are available for public inspection and review at the offices of the Louisiana State Mineral Board from 10:00 a.m. to 3:00 p.m. Monday - Friday.

In the event of conflict between the description of the nominated tract set forth above and the description of the nominated property as contained on the maps maintained at the offices of the Louisiana State Mineral Board, the Louisiana State Mineral Board maps shall prevail and shall provide the final property description of the lease to be awarded of the nominated tract.

Any mineral lease of the nominated tract by the Louisiana State Mineral Board shall be without warranty of any kind, either express, implied, or statutory, including, but not limited to, the implied warranties or merchantability and fitness for a particular purpose. Should the mineral lease of the nominated tract awarded by the Louisiana State Mineral Board be subsequently modified, cancelled or abrogated due to the existence of conflicting leases, operating agreements, private claims or other existing of future obligations or conditions which may affect all or any portion of the leased tract, it shall not relieve the Lessee of the obligation to pay