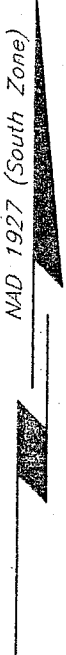


TR 34362  
 619.29 ± ACS.  
 APR., 2002

**P.O.B.**  
 X = 1,219,260.00  
 Y = 465,570.00



CAMERON PARISH, LOUISIANA

SCALE : 1" = 2000'

**TRACT 34363 - Cameron Parish, Louisiana**

All of the lands now or formerly constituting the beds and bottoms of all water bodies of every nature and description and all islands and other lands formed by accretion or reliction, except tax lands, owned by and not under mineral lease from the State of Louisiana on April 10, 2002, situated in Cameron Parish, Louisiana, within the following described boundaries: Beginning at a point having Coordinates of X = 1,224,710.00 and Y = 465,570.00; thence West 5,450.00 feet to a point having Coordinates of X = 1,219,260.00 and Y = 465,570.00; thence North 5,250.00 feet to a point having Coordinates of X = 1,219,260.00 and Y = 470,820.00; thence East 5,450.00 feet to a point having Coordinates of X = 1,224,710.00 and Y = 470,820.00; thence South 5,250.00 feet to the point of beginning, containing 656.85 acres, as shown outlined on a plat on file in the Office of Mineral Resources, Department of Natural Resources, as provided by the applicant. All bearings, distances and coordinates are based on Louisiana Coordinate System of 1927 (South Zone).

NOTE: The above description of the tract nominated for lease has been provided exclusively by the party nominating the tract for lease. The Louisiana State Mineral Board makes no representation as to the accuracy of the description of the nominated tract or its suitability for lease. The Louisiana State Mineral Board has made no inspection of the nominated tract for the existence of conflicting leases, operating agreements, private claims or other existing or future obligations or conditions which may affect all or any portion of the nominated tract or its suitability for lease.

Maps depicting the nominated tract, containing the bearings, distances and coordinates of the nominated tract based on the Louisiana Coordinate System of 1927, North or South Zone, as applicable, are available for public inspection and review at the offices of the Louisiana State Mineral Board from 10:00 a.m. to 3:00 p.m. Monday - Friday.

In the event of conflict between the description of the nominated tract set forth above and the description of the nominated property as contained on the maps maintained at the offices of the Louisiana State Mineral Board, the Louisiana State Mineral Board maps shall prevail and shall provide the final property description of the lease to be awarded of the nominated tract.

Any mineral lease of the nominated tract by the Louisiana State Mineral Board shall be without warranty of any kind, either express, implied, or statutory, including, but not limited to, the implied warranties or merchantability and fitness for a particular purpose. Should the mineral lease of the nominated tract awarded by the Louisiana State Mineral Board be subsequently modified, cancelled or abrogated due to the existence of conflicting leases, operating agreements, private claims or other existing of future obligations or conditions which may affect all or any portion of the leased tract, it shall not relieve the Lessee of the obligation to pay any bonus due thereon to the Louisiana State Mineral Board, nor shall the Louisiana State Mineral Board be obligated to refund any consideration paid by the Lessee prior to such modification, cancellation, or abrogation, including, but not limited to, bonuses, rents and royalties.

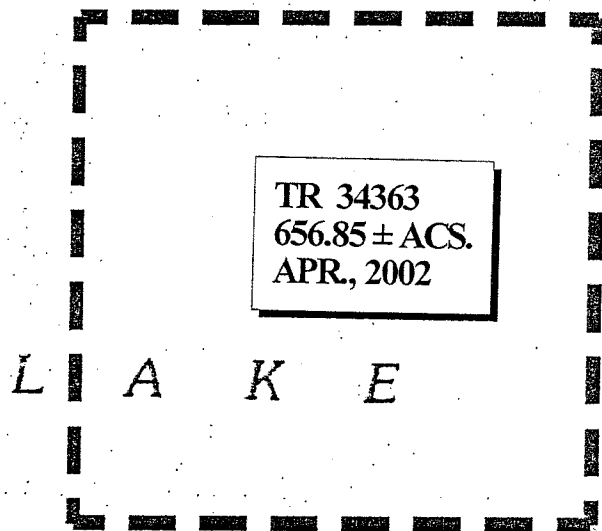
NOTE: The State of Louisiana does hereby reserve, and this lease shall be subject to, the imprescriptible right of surface use in the nature of a servitude in favor of the Department of Natural Resources, including its Offices and Commissions, for the sole purpose of implementing, constructing, servicing and maintaining approved coastal zone management and/or restoration projects. Utilization of any and all rights derived under this lease by the mineral lessee, its agents, successors or assigns, shall not interfere with nor hinder the reasonable surface use by the Department of Natural Resources, its Offices or Commissions, as hereinabove reserved.

Applicant: Clark W. Rider and Associates, Inc.

Bidder	Cash Payment	Price / Acre	Rental	Oil	Gas	Other

S A B I N E L A K E

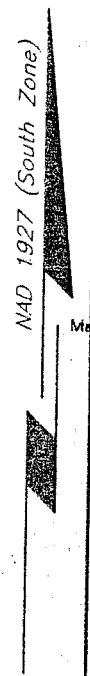
IBR CO  
BY CO  
CAMERON PARISH



TR 34363  
 656.85 ± ACS.  
 APR, 2002

L A K E

**P.O.B.**  
 X = 1,224,710.00  
 Y = 465,570.00



CAMERON PARISH, LOUISIANA

SCALE : 1" = 2000'

**TRACT 34364 - Acadia and Lafayette Parishes, Louisiana**

All of the lands now or formerly constituting the beds and bottoms of all water bodies of every nature and description and all islands and other lands formed by accretion or reliction, except tax lands, owned by and not under mineral lease from the State of Louisiana on April 10, 2002, situated in Acadia and Lafayette Parishes, Louisiana, within the following described boundaries: Beginning at a point having Coordinates of X = 1,714,383.25 and Y = 565,857.99; thence North 78 degrees 30 minutes 00 seconds East 3,340.48 feet to a point having Coordinates of X = 1,717,656.67 and Y = 566,523.98; thence the following courses: South 56 degrees 51 minutes 52 seconds East 135.33 feet to a point having Coordinates of X = 1,717,770.00 and Y = 566,450.00; South 59 degrees 02 minutes 03 seconds East 60.68 feet to a point having Coordinates of X = 1,717,822.03 and Y = 566,418.78; South 50 degrees 35 minutes 29 seconds East 502.14 feet to a point having Coordinates of X = 1,718,210.00 and Y = 566,100.00; South 51 degrees 06 minutes 56 seconds East 398.25 feet to a point having Coordinates of X = 1,718,520.00 and Y = 565,850.00; South 51 degrees 06 minutes 56 seconds East 29.56 feet to a point having Coordinates of X = 1,718,543.01 and Y = 565,831.44; thence South 78 degrees 30 minutes 00 seconds West 3,342.94 feet to a point having Coordinates of X = 1,715,267.18 and Y = 565,164.97; thence North 51 degrees 54 minutes 09 seconds West 1,123.22 feet to the point of beginning, containing approximately 2 acres, as shown outlined on a plat on file in the Office of Mineral Resources, Department of Natural Resources, as provided by the applicant. All bearings, distances and coordinates are based on Louisiana Coordinate System of 1927 (South Zone).

NOTE: The above description of the tract nominated for lease has been provided exclusively by the party nominating the tract for lease. The Louisiana State Mineral Board makes no representation as to the accuracy of the description of the nominated tract or its suitability for lease. The Louisiana State Mineral Board has made no inspection of the nominated tract for the existence of conflicting leases, operating agreements, private claims or other existing or future obligations or conditions which may affect all or any portion of the nominated tract or its suitability for lease.

Maps depicting the nominated tract, containing the bearings, distances and coordinates of the nominated tract based on the Louisiana Coordinate System of 1927, North or South Zone, as applicable, are available for public inspection and review at the offices of the Louisiana State Mineral Board from 10:00 a.m. to 3:00 p.m. Monday - Friday.

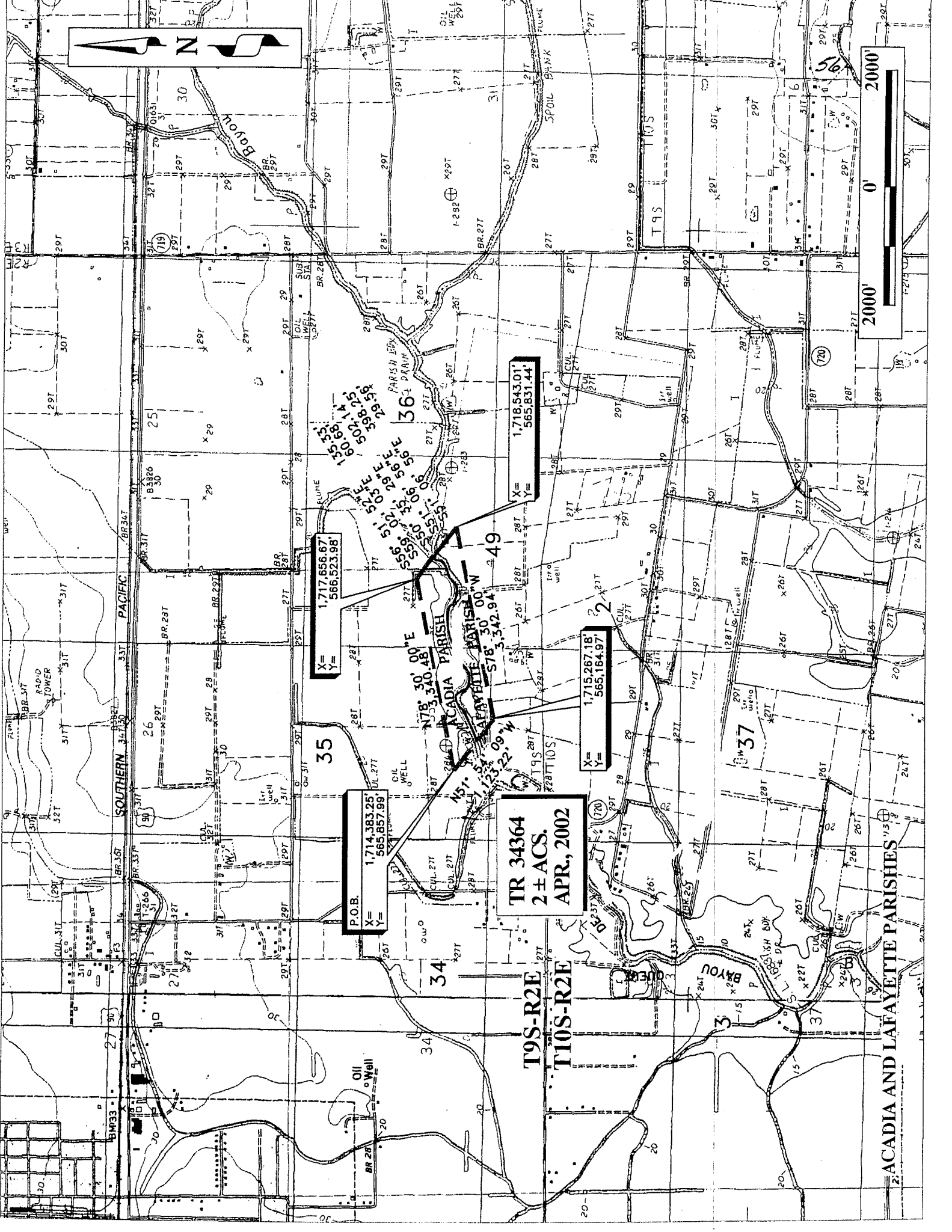
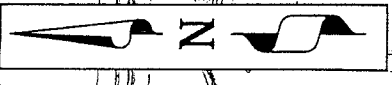
In the event of conflict between the description of the nominated tract set forth above and the description of the nominated property as contained on the maps maintained at the offices of the Louisiana State Mineral Board, the Louisiana State Mineral Board maps shall prevail and shall provide the final property description of the lease to be awarded of the nominated tract.

Any mineral lease of the nominated tract by the Louisiana State Mineral Board shall be without warranty of any kind, either express, implied, or statutory, including, but not limited to, the implied warranties or

merchantability and fitness for a particular purpose. Should the mineral lease of the nominated tract awarded by the Louisiana State Mineral Board be subsequently modified, cancelled or abrogated due to the existence of conflicting leases, operating agreements, private claims or other existing of future obligations or conditions which may affect all or any portion of the leased tract, it shall not relieve the Lessee of the obligation to pay any bonus due thereon to the Louisiana State Mineral Board, nor shall the Louisiana State Mineral Board be obligated to refund any consideration paid by the Lessee prior to such modification, cancellation, or abrogation, including, but not limited to, bonuses, rents and royalties.

Applicant: JIL Exploration, Inc.

Bidder	Cash Payment	Price / Acre	Rental	Oil	Gas	Other



1,717,656.67  
 X =  
 566,523.98  
 Y =  
 1,718,543.01  
 X =  
 565,831.44  
 Y =

1,715,267.18  
 X =  
 565,164.97  
 Y =

P.O.B.  
 1,714,383.25  
 X =  
 565,857.99  
 Y =

**TR 34364**  
**2 ± ACS.**  
**APR, 2002**

ACADIA AND LAFAYETTE PARISHES

**TRACT 34365 - Acadia and Lafayette Parishes, Louisiana**

All of the lands now or formerly constituting the beds and bottoms of all water bodies of every nature and description and all islands and other lands formed by accretion or reliction, except tax lands, owned by and not under mineral lease from the State of Louisiana on April 10, 2002, situated in Acadia and Lafayette Parishes, Louisiana, within the following described boundaries: Beginning at a point having Coordinates of X = 1,714,383.25 and Y = 565,857.99; thence South 51 degrees 54 minutes 09 seconds East 1,123.22 feet to a point having Coordinates of X = 1,715,267.18 and Y = 565,164.97; thence South 50 degrees 32 minutes 30 seconds West 3,894.41 feet to a point having Coordinates of X = 1,712,260.36 and Y = 562,690.00; thence West 1,725.88 feet to a point having Coordinates of X = 1,710,534.47 and Y = 562,690.00, said line also being along the North boundary of State Lease No. 16837; thence North 50 degrees 32 minutes 30 seconds East 4,984.91 feet to the point of beginning, containing approximately 7 acres, as shown outlined on a plat on file in the Office of Mineral Resources, Department of Natural Resources, as provided by the applicant. All bearings, distances and coordinates are based on Louisiana Coordinate System of 1927 (South Zone).

NOTE: The above description of the tract nominated for lease has been provided exclusively by the party nominating the tract for lease. The Louisiana State Mineral Board makes no representation as to the accuracy of the description of the nominated tract or its suitability for lease. The Louisiana State Mineral Board has made no inspection of the nominated tract for the existence of conflicting leases, operating agreements, private claims or other existing or future obligations or conditions which may affect all or any portion of the nominated tract or its suitability for lease.

Maps depicting the nominated tract, containing the bearings, distances and coordinates of the nominated tract based on the Louisiana Coordinate System of 1927, North or South Zone, as applicable, are available for public inspection and review at the offices of the Louisiana State Mineral Board from 10:00 a.m. to 3:00 p.m. Monday - Friday.

In the event of conflict between the description of the nominated tract set forth above and the description of the nominated property as contained on the maps maintained at the offices of the Louisiana State Mineral Board, the Louisiana State Mineral Board maps shall prevail and shall provide the final property description of the lease to be awarded of the nominated tract.

Any mineral lease of the nominated tract by the Louisiana State Mineral Board shall be without warranty of any kind, either express, implied, or statutory, including, but not limited to, the implied warranties or merchantability and fitness for a particular purpose. Should the mineral lease of the nominated tract awarded by the Louisiana State Mineral Board be subsequently modified, cancelled or abrogated due to the existence of conflicting leases, operating agreements, private claims or other existing of future obligations or conditions which may affect all or any portion of the leased tract, it shall not relieve the Lessee of the obligation to pay any bonus due thereon to the Louisiana State Mineral Board, nor shall the



Louisiana State Mineral Board be obligated to refund any consideration paid by the Lessee prior to such modification, cancellation, or abrogation, including, but not limited to, bonuses, rents and royalties.

NOTE: The State of Louisiana does hereby reserve, and this lease shall be subject to, the imprescriptible right of surface use in the nature of a servitude in favor of the Department of Natural Resources, including its Offices and Commissions, for the sole purpose of implementing, constructing, servicing and maintaining approved coastal zone management and/or restoration projects. Utilization of any and all rights derived under this lease by the mineral lessee, its agents, successors or assigns, shall not interfere with nor hinder the reasonable surface use by the Department of Natural Resources, its Offices or Commissions, as hereinabove reserved.

Applicant: JIL Exploration, Inc.

Bidder	Cash Payment	Price / Acre	Rental	Oil	Gas	Other