

INLAND

TRACTS

TRACT 34357 - Caldwell Parish, Louisiana

All of the lands now or formerly constituting the beds and bottoms of all water bodies of every nature and description and all islands and other lands formed by accretion or reliction, except tax lands, owned by and not under mineral lease from the State of Louisiana on April 10, 2002, situated in Caldwell Parish, Louisiana, within the following described boundaries: Beginning at a point having Coordinates of X = 2,110,970.00 and Y = 553,980.00; thence North 00 degrees 40 minutes 57 seconds East 15,951.13 feet to a point having Coordinates of X = 2,111,160.00 and Y = 569,930.00; thence North 89 degrees 37 minutes 36 seconds East 10,740.23 feet to a point having Coordinates of X = 2,121,900.00 and Y = 570,000.00; thence South 00 degrees 58 minutes 11 seconds West 15,952.29 feet to a point having Coordinates of X = 2,121,630.00 and Y = 554,050.00; thence South 89 degrees 37 minutes 26 seconds West 10,660.23 feet to the point of beginning, containing approximately 366 acres, as shown outlined on a plat on file in the Office of Mineral Resources, Department of Natural Resources, as provided by the applicant. All bearings, distances and coordinates are based on Louisiana Coordinate System of 1927 (South Zone).

NOTE: The above description of the tract nominated for lease has been provided exclusively by the party nominating the tract for lease. The Louisiana State Mineral Board makes no representation as to the accuracy of the description of the nominated tract or its suitability for lease. The Louisiana State Mineral Board has made no inspection of the nominated tract for the existence of conflicting leases, operating agreements, private claims or other existing or future obligations or conditions which may affect all or any portion of the nominated tract or its suitability for lease.

Maps depicting the nominated tract, containing the bearings, distances and coordinates of the nominated tract based on the Louisiana Coordinate System of 1927, North or South Zone, as applicable, are available for public inspection and review at the offices of the Louisiana State Mineral Board from 10:00 a.m. to 3:00 p.m. Monday - Friday.

In the event of conflict between the description of the nominated tract set forth above and the description of the nominated property as contained on the maps maintained at the offices of the Louisiana State Mineral Board, the Louisiana State Mineral Board maps shall prevail and shall provide the final property description of the lease to be awarded of the nominated tract.

Any mineral lease of the nominated tract by the Louisiana State Mineral Board shall be without warranty of any kind, either express, implied, or statutory, including, but not limited to, the implied warranties or merchantability and fitness for a particular purpose. Should the mineral lease of the nominated tract awarded by the Louisiana State Mineral Board be subsequently modified, cancelled or abrogated due to the existence of conflicting leases, operating agreements, private claims or other existing of future obligations or conditions which may affect all or any portion of the leased tract, it shall not relieve the Lessee of the obligation to pay any bonus due thereon to the Louisiana State Mineral Board, nor shall the Louisiana State Mineral Board be obligated to refund any consideration

paid by the Lessee prior to such modification, cancellation, or abrogation, including, but not limited to, bonuses, rents and royalties.

Applicant: Mark V Petroleum Company

Bidder	Cash Payment	Price / Acre	Rental	Oil	Gas	Other

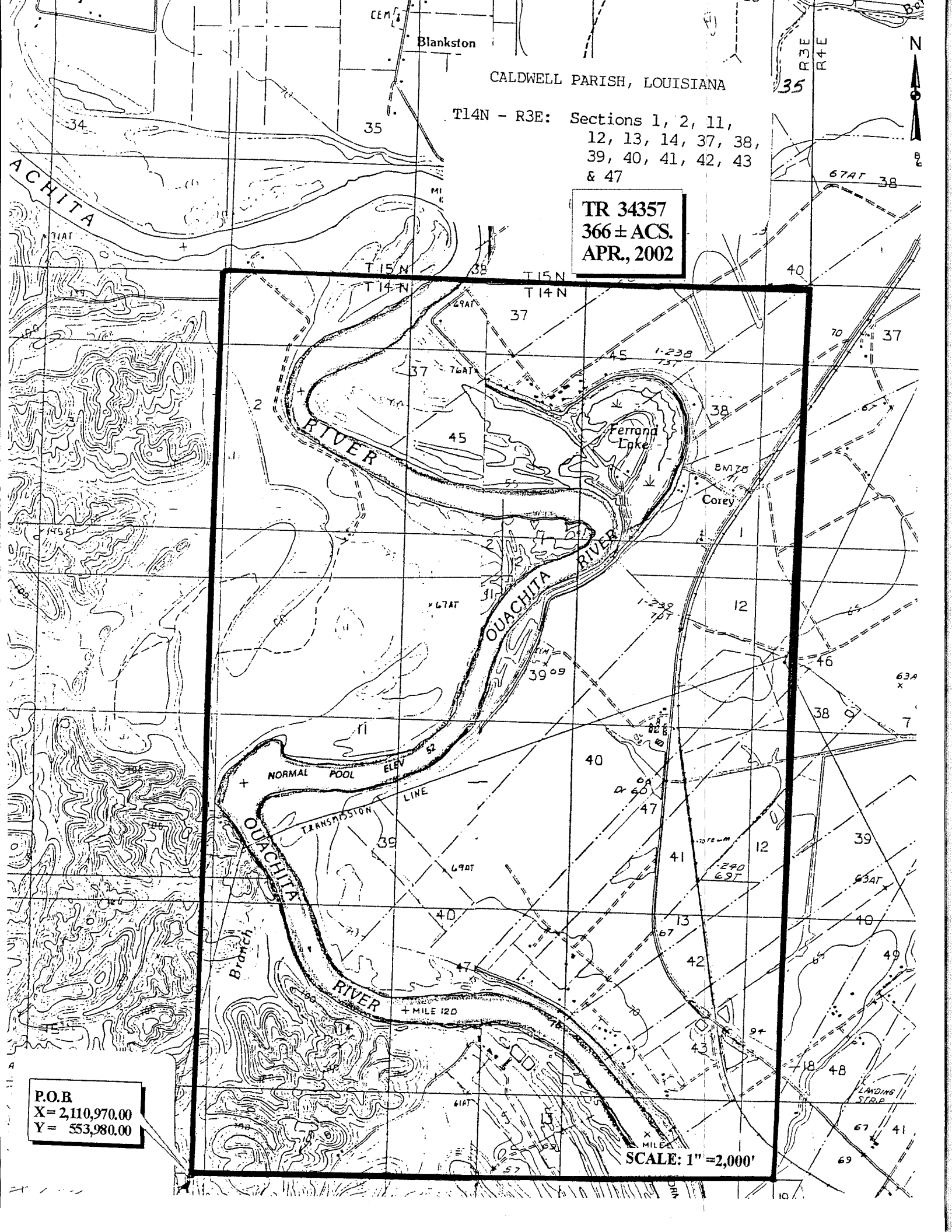
CALDWELL PARISH, LOUISIANA

T14N - R3E: Sections 1, 2, 11,
12, 13, 14, 37, 38,
39, 40, 41, 42, 43
& 47

TR 34357
366 ± ACS.
APR, 2002

P.O.B
X= 2,110,970.00
Y= 553,980.00

SCALE: 1" = 2,000'



TRACT 34358 - Caldwell Parish, Louisiana

All of the lands now or formerly constituting the beds and bottoms of all water bodies of every nature and description and all islands and other lands formed by accretion or reliction, except tax lands, owned by and not under mineral lease from the State of Louisiana on April 10, 2002, situated in Caldwell Parish, Louisiana, within the following described boundaries: Beginning at a point having Coordinates of X = 2,116,180.00 and Y = 538,200.00; thence North 00 degrees 08 minutes 43 seconds West 15,780.05 feet to a point having Coordinates of X = 2,116,140.00 and Y = 553,980.00; thence North 89 degrees 38 minutes 09 seconds East 11,010.22 feet to a point having Coordinates of X = 2,127,150.00 and Y = 554,050.00; thence South 00 degrees 06 minutes 31 seconds East 15,830.03 feet to a point having Coordinates of X = 2,127,180.00 and Y = 538,220.00; thence South 89 degrees 53 minutes 45 seconds West 11,000.02 feet to the point of beginning, containing approximately 304 acres, as shown outlined on a plat on file in the Office of Mineral Resources, Department of Natural Resources, as provided by the applicant. All bearings, distances and coordinates are based on Louisiana Coordinate System of 1927 (South Zone).

NOTE: The above description of the tract nominated for lease has been provided exclusively by the party nominating the tract for lease. The Louisiana State Mineral Board makes no representation as to the accuracy of the description of the nominated tract or its suitability for lease. The Louisiana State Mineral Board has made no inspection of the nominated tract for the existence of conflicting leases, operating agreements, private claims or other existing or future obligations or conditions which may affect all or any portion of the nominated tract or its suitability for lease.

Maps depicting the nominated tract, containing the bearings, distances and coordinates of the nominated tract based on the Louisiana Coordinate System of 1927, North or South Zone, as applicable, are available for public inspection and review at the offices of the Louisiana State Mineral Board from 10:00 a.m. to 3:00 p.m. Monday - Friday.

In the event of conflict between the description of the nominated tract set forth above and the description of the nominated property as contained on the maps maintained at the offices of the Louisiana State Mineral Board, the Louisiana State Mineral Board maps shall prevail and shall provide the final property description of the lease to be awarded of the nominated tract.

Any mineral lease of the nominated tract by the Louisiana State Mineral Board shall be without warranty of any kind, either express, implied, or statutory, including, but not limited to, the implied warranties or merchantability and fitness for a particular purpose. Should the mineral lease of the nominated tract awarded by the Louisiana State Mineral Board be subsequently modified, cancelled or abrogated due to the existence of conflicting leases, operating agreements, private claims or other existing of future obligations or conditions which may affect all or any portion of the leased tract, it shall not relieve the Lessee of the obligation to pay any bonus due thereon to the Louisiana State Mineral Board, nor shall the Louisiana State Mineral Board be obligated to refund any consideration

paid by the Lessee prior to such modification, cancellation, or abrogation, including, but not limited to, bonuses, rents and royalties.

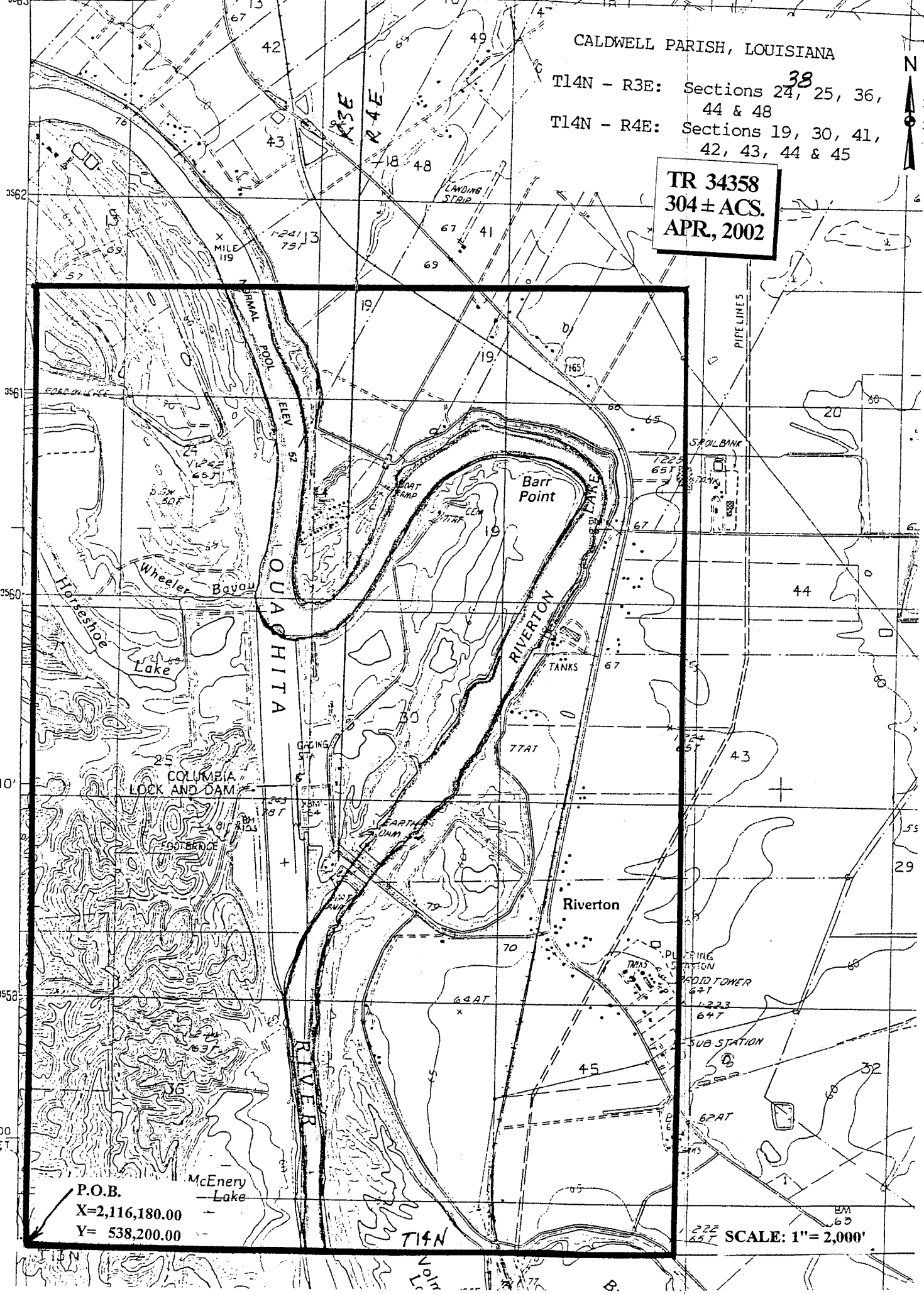
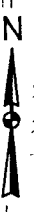
Applicant: Mark V Petroleum Company

Bidder	Cash Payment	Price / Acre	Rental	Oil	Gas	Other

CALDWELL PARISH, LOUISIANA

T14N - R3E: Sections 24, 25, 36, 44 & 48
T14N - R4E: Sections 19, 30, 41, 42, 43, 44 & 45

TR 34358
304 ± ACS.
APR, 2002



540000
FEET

P.O.B.
X=2,116,180.00
Y= 538,200.00

SCALE: 1"=2,000'

TRACT 34359 - Caldwell Parish, Louisiana

All of the lands now or formerly constituting the beds and bottoms of all water bodies of every nature and description and all islands and other lands formed by accretion or reliction, except tax lands, owned by and not under mineral lease from the State of Louisiana on April 10, 2002, situated in Caldwell Parish, Louisiana, within the following described boundaries: Beginning at a point having Coordinates of X = 2,116,180.00 and Y = 538,200.00; thence South 01 degrees 01 minutes 29 seconds East 12,301.97 feet to a point having Coordinates of X = 2,116,400.00 and Y = 525,900.00; thence North 89 degrees 41 minutes 22 seconds East 18,450.27 feet to a point having Coordinates of X = 2,134,850.00 and Y = 526,000.00; thence North 00 degrees 53 minutes 37 seconds West 12,181.48 feet to a point having Coordinates of X = 2,134,660.00 and Y = 538,180.00; thence North 89 degrees 56 minutes 17 seconds West 18,480.01 feet to the point of beginning, containing approximately 310 acres, as shown outlined on a plat on file in the Office of Mineral Resources, Department of Natural Resources, as provided by the applicant. All bearings, distances and coordinates are based on Louisiana Coordinate System of 1927 (South Zone).

NOTE: The above description of the tract nominated for lease has been provided exclusively by the party nominating the tract for lease. The Louisiana State Mineral Board makes no representation as to the accuracy of the description of the nominated tract or its suitability for lease. The Louisiana State Mineral Board has made no inspection of the nominated tract for the existence of conflicting leases, operating agreements, private claims or other existing or future obligations or conditions which may affect all or any portion of the nominated tract or its suitability for lease.

Maps depicting the nominated tract, containing the bearings, distances and coordinates of the nominated tract based on the Louisiana Coordinate System of 1927, North or South Zone, as applicable, are available for public inspection and review at the offices of the Louisiana State Mineral Board from 10:00 a.m. to 3:00 p.m. Monday - Friday.

In the event of conflict between the description of the nominated tract set forth above and the description of the nominated property as contained on the maps maintained at the offices of the Louisiana State Mineral Board, the Louisiana State Mineral Board maps shall prevail and shall provide the final property description of the lease to be awarded of the nominated tract.

Any mineral lease of the nominated tract by the Louisiana State Mineral Board shall be without warranty of any kind, either express, implied, or statutory, including, but not limited to, the implied warranties or merchantability and fitness for a particular purpose. Should the mineral lease of the nominated tract awarded by the Louisiana State Mineral Board be subsequently modified, cancelled or abrogated due to the existence of conflicting leases, operating agreements, private claims or other existing of future obligations or conditions which may affect all or any portion of the leased tract, it shall not relieve the Lessee of the obligation to pay any bonus due thereon to the Louisiana State Mineral Board, nor shall the Louisiana State Mineral Board be obligated to refund any consideration

paid by the Lessee prior to such modification, cancellation, or abrogation, including, but not limited to, bonuses, rents and royalties.

Applicant: Mark V Petroleum Company

Bidder	Cash Payment	Price / Acre	Rental	Oil	Gas	Other