

Pass-A-Loutre WMA

P.O.B.

X=2748749.98

Y=200214.00

S.L. 15042

TR 33362
2,500.00 +/- ACS.
APRIL, 2001

2

76

MAIN PASS AREA, REVISED
PLAQUEMINES PARISH, LA.
SCALE 1"=2000'

TRACT 33363 - PORTION OF BLOCK 76, MAIN PASS AREA, REVISED, Plaquemine Parish, Louisiana

That portion of Block 76, Main Pass Area, Revised, Plaquemines Parish Louisiana, belonging to the State of Louisiana and not under mineral lease (April 11, 2001, described as follows: Beginning at the Southeast corner of Block 76, Main Pass Area Revised, having Coordinates of X = 2,763,507.98 and Y = 185,456.00; thence West 7,378.97 along South line of Block 76 to a point having Coordinates of X = 2,756,129.02 and Y = 185,456.00; thence North 6,700.00 to the Southeast corner of State Lease No. 15042 having Coordinates of X = 2,756,129.02 and Y = 192,156.00; thence East 7,379 feet to a point having Coordinates of X = 2,763,508.02 and Y = 192,156.00; thence South 6,700.00 to the point of beginning, containing approximately **1,134.97 acres** as shown outlined in red on a plat on file in the Office of Mineral Resources, Department of Natural Resources, as provided by the applicant. All bearings, distances and coordinates are based on Louisiana Coordinate System of 1927 (South Zone).

NOTE: The boundary description and plat for this tract as shown and advertised were supplied by the nominating party and have not been checked for accuracy by the staff of the Office of Mineral Resources. Anything which may affect the acreage, the shape or the location of the tract, such as non-closure of or incorrect X, Y coordinates or title disputed acreage, or which may affect the status of the tract for leasing, such as overlap of prior leases or nominated tracts, or which may affect potential operations on leases taken, such as inclusion in areas under the jurisdiction of the Department of Wildlife and Fisheries, will not be specifically determined unless and until a bid on this tract is accepted by the Mineral Board; which bid will be accepted on a per acre basis and which acceptance will be conditional upon such specific determinations being made. Once a bid is conditionally accepted by the Mineral Board, the staff will within a period following the date of the lease sale, determine the acreage, shape and location of the potential lease area of the tract, the status for leasing of all or any portion thereof, and any conditions which may affect potential operations thereon. These determinations may render all or a portion of the bid area unleaseable or may increase or decrease the State claimed acreage such that the total bonus/rental ultimately required may either exceed the bonus/rental paid at the lease sale, which will require additional payment by the successful bidder, or allow the successful bidder a refund of excessive payment. The successful bidder will be notified of the determinations by the staff and given an opportunity to view the bid area acreage, configuration and location as it has been specifically determined. If all or a portion of the bid area is unleaseable due to overlap of an existing lease, the successful bidder will be given an opportunity to accept or reject a new lease on the portion of the bid area which is not unleaseable. If rejected, the bid and all monies accompanying the bid will be returned to the successful bidder and no lease will be issued. In all other cases a new lease will be issued and any additional per acre bonus/rental 10% administration fee or \$10 and \$5 per acre fees due as a result of staff determination of more State acreage in the bid area shall be determined by the successful bidder will be paid prior to the lease

being issued. A determination of less State acreage in the bid area will result in a return to the successful bidder of any overpayment

NOTE: The State of Louisiana does hereby reserve, and this lease shall be subject to, the imprescriptible right of surface use in the nature of a servitude in favor of the Department of Natural Resources including its Offices and Commissions, for the sole purpose of implementing, constructing, servicing and maintaining approved coastal zone management and/or restoration projects. Utilization of any and all rights derived under this lease by the mineral lessee or its agents, successors or assigns, shall not interfere with nor hinder the reasonable surface use by the Department of Natural Resources, its Offices or Commissions, as hereinabove reserved.

Applicant: Jenkins Companies

Bidder	Cash Payment	Price / Acre	Rental	Oil	Gas	Other

S.L. 15042

76

**TR 33363
1,134.97 +/- ACS.
APRIL, 2001**

S.L. 13718

P.O.B.
X=2763507.98
Y=185456.00

TRACT 33364 - PORTION OF BLOCK 75, MAIN PASS AREA, REVISED, Plaquemine Parish, Louisiana

That portion of Block 75, Main Pass Area, Revised, Plaquemines Parish Louisiana, belonging to the State of Louisiana and not under mineral lease c April 11, 2001, described as follows: Beginning at the Northwest corner c Block 75, Main Pass Area Revised, having Coordinates of X = 2,748,743.02 ar Y = 214,950.04; thence East 7,386.02 feet to the Northwest corner of Stat Lease No. 15386 having Coordinates of X = 2,756,129.00 and Y = 214,972.00 thence South 14,758.00 feet to a point having Coordinates of X = 2,756,129.0 and Y = 200,214.00; thence West 7,379.02 feet to a point having Coordinate of X = 2,748,749.98 and Y = 200,214.00; thence North 14,736.04 feet to th point of beginning, containing approximately **2,499.31 acres**, as show outlined in red on a plat on file in the Office of Mineral Resources Department of Natural Resources, as provided by the applicant. All bearings distances and coordinates are based on Louisiana Coordinate System of 192 (South Zone).

NOTE: The boundary description and plat for this tract as shown and a advertised were supplied by the nominating party and have not bee checked for accuracy by the staff of the Office of Mineral Resources Anything which may affect the acreage, the shape or the location c the tract, such as non-closure of or incorrect X, Y coordinates c title disputed acreage, or which may affect the status of the trac for leasing, such as overlap of prior leases or nominated tracts, c which may affect potential operations on leases taken, such a inclusion in areas under the jurisdiction of the Department c Wildlife and Fisheries, will not be specifically determined unles and until a bid on this tract is accepted by the Mineral Board; whic bid will be accepted on a per acre basis and which acceptance wil be conditional upon such specific determinations being made. Onc a bid is conditionally accepted by the Mineral Board, the staff will within a period following the date of the lease sale, determine th acreage, shape and location of the potential lease area of the tract the status for leasing of all or any portion thereof, and ar conditions which may affect potential operations thereon. Thee determinations may render all or a portion of the bid area unleaseabl or may increase or decrease the State claimed acreage such that th total bonus/rental ultimately required may either exceed th bonus/rental paid at the lease sale, which will require additiona payment by the successful bidder, or allow the successful bidder refund of excessive payment. The successful bidder will be notific of the determinations by the staff and given an opportunity to vie the bid area acreage, configuration and location as it has bee specifically determined. If all or a portion of the bid area i unleaseable due to overlap of an existing lease, the successful bidde will be given an opportunity to accept or reject a new lease on th portion of the bid area which is not unleaseable. If rejected, th bid and all monies accompanying the bid will be returned to th successful bidder and no lease will be issued. In all other case a new lease will be issued and any additional per acre bonus/rental 10% administration fee or \$10 and \$5 per acre fees due as a resul of staff determination of more State acreage in the bid area th determined by the successful bidder will be paid prior to the leas

being issued. A determination of less State acreage in the bid are will result in a return to the successful bidder of any overpayment

NOTE: The State of Louisiana does hereby reserve, and this lease shall be subject to, the imprescriptible right of surface use in the nature of a servitude in favor of the Department of Natural Resources including its Offices and Commissions, for the sole purpose of implementing, constructing, servicing and maintaining approved coastal zone management and/or restoration projects. Utilization of any and all rights derived under this lease by the mineral lessee or its agents, successors or assigns, shall not interfere with nor hinder the reasonable surface use by the Department of Natural Resources, its Offices or Commissions, as hereinabove reserved.

Applicant: Jenkins Companies

Bidder	Cash Payment	Price / Acre	Rental	Oil	Gas	Other

P.O.B.
X=2748743.02
Y=214950.04

S.L. 1538

TR 33364
2,499.31 +/- ACS.
APRIL, 2001

S.L. 988B

75

MAIN PASS AREA, REVISED

PLAQUEMINES PARISH, L.

SCALE 1"=2000'

TRACT 33365 - PORTION OF BLOCK 75, MAIN PASS AREA, REVISED, Plaquemine Parish, Louisiana

That portion of Block 75, Main Pass Area, Revised, Plaquemines Parish Louisiana, belonging to the State of Louisiana and not under mineral lease as of April 11, 2001, described as follows: Beginning at a point on the South line of Block 75, Main Pass Area Revised, having Coordinates of X = 2,756,129.00 and Y = 200,214.00; thence North 7,172.52 to a point having Coordinates of X = 2,756,129.00 and Y = 207,386.52; thence Southeasterly along State Lease No. 8690 to a point on the South line of Block 75 having Coordinates of X = 2,759,120.44 and Y = 200,214.00; thence West 2,991.44 feet to the point of beginning, containing approximately **295.30 acres**, as shown outlined in red on a plat on file in the Office of Mineral Resources Department of Natural Resources, as provided by the applicant. All bearings, distances and coordinates are based on Louisiana Coordinate System of 1928 (South Zone).

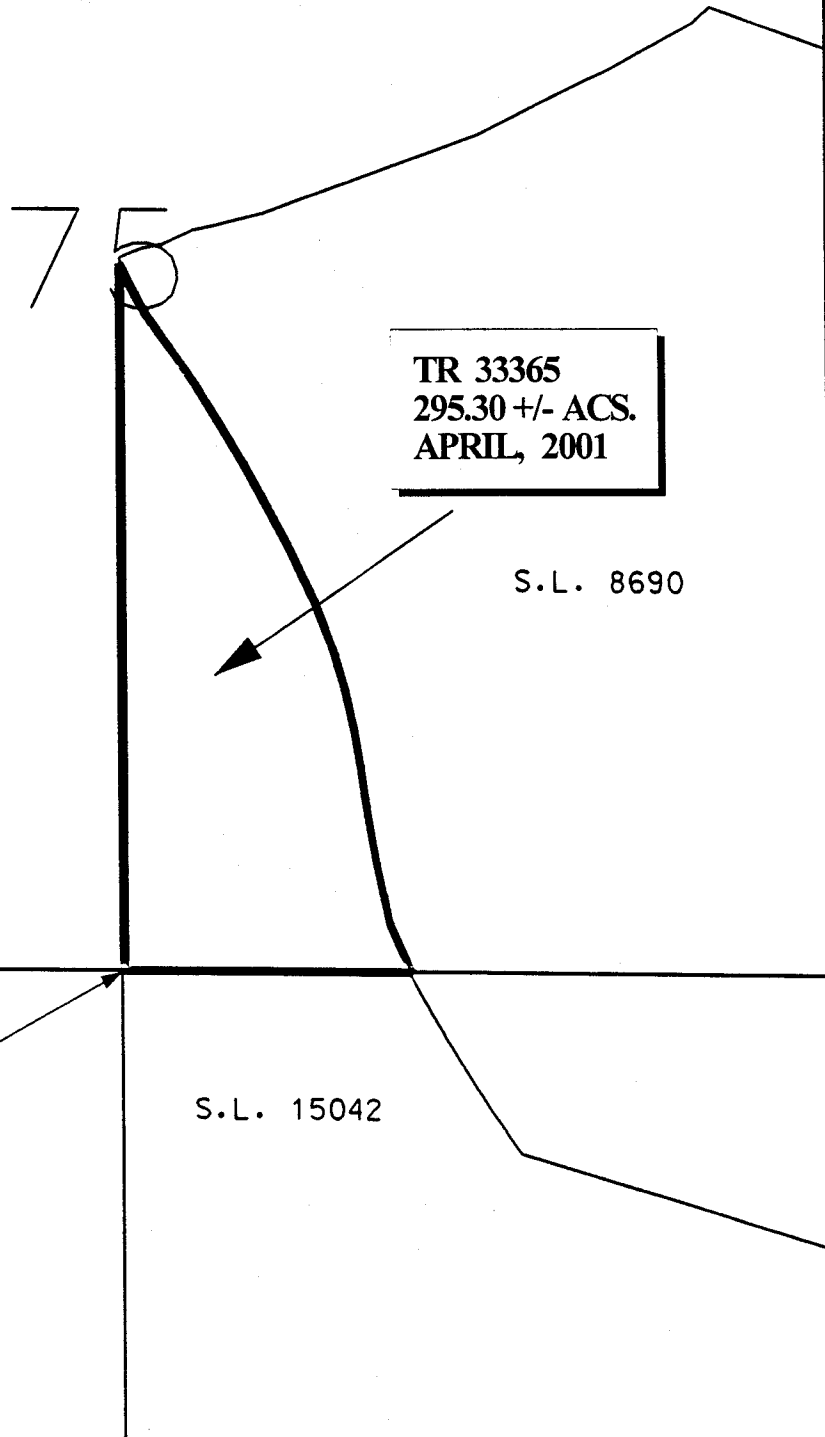
NOTE: The boundary description and plat for this tract as shown and as advertised were supplied by the nominating party and have not been checked for accuracy by the staff of the Office of Mineral Resources. Anything which may affect the acreage, the shape or the location of the tract, such as non-closure of or incorrect X, Y coordinates or title disputed acreage, or which may affect the status of the tract for leasing, such as overlap of prior leases or nominated tracts, or which may affect potential operations on leases taken, such as inclusion in areas under the jurisdiction of the Department of Wildlife and Fisheries, will not be specifically determined unless and until a bid on this tract is accepted by the Mineral Board; which bid will be accepted on a per acre basis and which acceptance will be conditional upon such specific determinations being made. Once a bid is conditionally accepted by the Mineral Board, the staff will within a period following the date of the lease sale, determine the acreage, shape and location of the potential lease area of the tract, the status for leasing of all or any portion thereof, and any conditions which may affect potential operations thereon. These determinations may render all or a portion of the bid area unleaseable or may increase or decrease the State claimed acreage such that the total bonus/rental ultimately required may either exceed the bonus/rental paid at the lease sale, which will require additional payment by the successful bidder, or allow the successful bidder a refund of excessive payment. The successful bidder will be notified of the determinations by the staff and given an opportunity to view the bid area acreage, configuration and location as it has been specifically determined. If all or a portion of the bid area is unleaseable due to overlap of an existing lease, the successful bidder will be given an opportunity to accept or reject a new lease on the portion of the bid area which is not unleaseable. If rejected, the bid and all monies accompanying the bid will be returned to the successful bidder and no lease will be issued. In all other cases a new lease will be issued and any additional per acre bonus/rental, 10% administration fee or \$10 and \$5 per acre fees due as a result of staff determination of more State acreage in the bid area shall be determined by the successful bidder will be paid prior to the lease being issued. A determination of less State acreage in the bid area

will result in a return to the successful bidder of any overpayment

NOTE: The State of Louisiana does hereby reserve, and this lease shall be subject to, the imprescriptible right of surface use in the nature of a servitude in favor of the Department of Natural Resources including its Offices and Commissions, for the sole purpose of implementing, constructing, servicing and maintaining approved coastal zone management and/or restoration projects. Utilization of any and all rights derived under this lease by the mineral lessee or its agents, successors or assigns, shall not interfere with nor hinder the reasonable surface use by the Department of Natural Resources, its Offices or Commissions, as hereinabove reserved.

Applicant: Jenkins Companies

Bidder	Cash Payment	Price / Acre	Rental	Oil	Gas	Other



TR 33365
295.30 +/- ACS.
APRIL, 2001

S.L. 8690

P.O.B.
X=2756129.00
Y=200214.00

S.L. 15042

MAIN PASS AREA, REVISED.
PLAQUEMINES PARISH, L A.
SCALE 1"=2000'

TRACT 33366 - PORTION OF BLOCK 26, BRETON SOUND AREA, Plaquemines Parish Louisiana

That portion of Block 26, Breton Sound Area, Plaquemines Parish, Louisiana belonging to the State of Louisiana and not under mineral lease on April 11 2001, described as follows: Beginning at the Northwest corner of Block 26 Breton Sound Area, having Coordinates of X = 2,723,850.00 and Y = 337,080.00 thence East 6,053.83 feet along the North line of said Block 26 to a point having Coordinates of X = 2,729,903.83 and Y = 337,080.00; thence Southwesterly on a straight line to a point having Coordinates of X = 2,727,653 and Y = 334,120; thence Southwesterly on a straight line to a point having Coordinates of X = 2,726,852 and Y = 333,103; thence Southwesterly on a straight line to a point having Coordinates of X = 2,723,975 and Y = 330,868; thence Southwesterly on a straight line to a point on the West line of said Block 26 having Coordinates of X = 2,723,850.00 and Y = 330,739.83; thence North 6,340.17 feet along the West line of said Block 26 to the point of beginning, containing approximately **494.74 acres**, as shown outlined in red on a plat on file in the Office of Mineral Resources, Department of Natural Resources, as provided by the applicant. All bearings, distances and coordinates are based on Louisiana Coordinate System of 1927 (South Zone).

NOTE: The boundary description and plat for this tract as shown and as advertised were supplied by the nominating party and have not been checked for accuracy by the staff of the Office of Mineral Resources. Anything which may affect the acreage, the shape or the location of the tract, such as non-closure of or incorrect X, Y coordinates of title disputed acreage, or which may affect the status of the tract for leasing, such as overlap of prior leases or nominated tracts, or which may affect potential operations on leases taken, such as inclusion in areas under the jurisdiction of the Department of Wildlife and Fisheries, will not be specifically determined unless and until a bid on this tract is accepted by the Mineral Board; which bid will be accepted on a per acre basis and which acceptance will be conditional upon such specific determinations being made. Once a bid is conditionally accepted by the Mineral Board, the staff will within a period following the date of the lease sale, determine the acreage, shape and location of the potential lease area of the tract, the status for leasing of all or any portion thereof, and any conditions which may affect potential operations thereon. These determinations may render all or a portion of the bid area unleaseable or may increase or decrease the State claimed acreage such that the total bonus/rental ultimately required may either exceed the bonus/rental paid at the lease sale, which will require additional payment by the successful bidder, or allow the successful bidder a refund of excessive payment. The successful bidder will be notified of the determinations by the staff and given an opportunity to view the bid area acreage, configuration and location as it has been specifically determined. If all or a portion of the bid area is unleaseable due to overlap of an existing lease, the successful bidder will be given an opportunity to accept or reject a new lease on that portion of the bid area which is not unleaseable. If rejected, the bid and all monies accompanying the bid will be returned to the successful bidder and no lease will be issued. In all other cases a new lease will be issued and any additional per acre bonus/rental

10% administration fee or \$10 and \$5 per acre fees due as a result of staff determination of more State acreage in the bid area the determined by the successful bidder will be paid prior to the lease being issued. A determination of less State acreage in the bid area will result in a return to the successful bidder of any overpayment

NOTE: The State of Louisiana does hereby reserve, and this lease shall be subject to, the imprescriptible right of surface use in the nature of a servitude in favor of the Department of Natural Resources including its Offices and Commissions, for the sole purpose of implementing, constructing, servicing and maintaining approved coastal zone management and/or restoration projects. Utilization of any and all rights derived under this lease by the mineral lessee or its agents, successors or assigns, shall not interfere with nor hinder the reasonable surface use by the Department of Natural Resources, its Offices or Commissions, as hereinabove reserved.

Applicant: Harold J. Anderson, Inc.

Bidder	Cash Payment	Price / Acre	Rental	Oil	Gas	Other

Bik. 22

Bik. 23

115

P. O. B.
X=2,723,850.00
Y= 337,080.00

SL 4574

TR 33366
494.74 +/- ACS.
APRIL, 2001

Bik. 27

Bik. 26

BRETON SOUND AREA

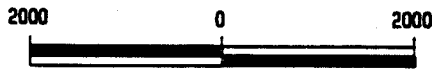
GULF OF MEXICO

SL 4574



REVISED:

Plaquemines Parish, Louisiana



Scale in Feet

TRACT 33367 - PORTION OF BLOCK 26, BRETON SOUND AREA, Plaquemines Parish Louisiana

That portion of Block 26, Breton Sound Area, Plaquemines Parish, Louisiana belonging to the State of Louisiana and not under mineral lease on April 11 2001, described as follows: Beginning at the Northeast corner of said Block 26 having Coordinates of X = 2,738,600.00 and Y = 337,080.00; thence South 7,375.00 feet on the East line of said Block 26 to a point having Coordinate of X = 2,738,600.00 and Y = 329,705.00; thence West 14,750.00 feet to a point on the West line of said Block 26 having Coordinates of X = 2,723,850.00 and Y = 329,705.00; thence North 1,034.83 feet on the West line of said Block 26 to a point on the defined shoreline having Coordinates of X = 2,723,850.00 and Y = 330,739.83; thence Northeasterly on a straight line to a point having Coordinates of X = 2,723,975 and Y = 330,868; thence Northeasterly on a straight line to a point having Coordinates of X = 2,726,852 and Y = 333,103; thence Northeasterly on a straight line to a point having Coordinates of X = 2,727,653 and Y = 334,120; thence Northeasterly on a straight line to a point on the North line of said Block 26 having Coordinates of X = 2,729,903.83 and Y = 337,080.00; thence East 8,696.17 feet on the North line of said Block 26 to the point of beginning, containing approximately 2,002.53 acres, as shown outlined in red on a plat on file in the Office of Mineral Resources Department of Natural Resources, as provided by the applicant. All bearings, distances and coordinates are based on Louisiana Coordinate System of 1928 (South Zone).

NOTE: The boundary description and plat for this tract as shown and advertised were supplied by the nominating party and have not been checked for accuracy by the staff of the Office of Mineral Resources. Anything which may affect the acreage, the shape or the location of the tract, such as non-closure of or incorrect X, Y coordinates of title, disputed acreage, or which may affect the status of the tract for leasing, such as overlap of prior leases or nominated tracts, or which may affect potential operations on leases taken, such as inclusion in areas under the jurisdiction of the Department of Wildlife and Fisheries, will not be specifically determined unless and until a bid on this tract is accepted by the Mineral Board; which bid will be accepted on a per acre basis and which acceptance will be conditional upon such specific determinations being made. Once a bid is conditionally accepted by the Mineral Board, the staff will within a period following the date of the lease sale, determine the acreage, shape and location of the potential lease area of the tract, the status for leasing of all or any portion thereof, and the conditions which may affect potential operations thereon. These determinations may render all or a portion of the bid area unleaseable or may increase or decrease the State claimed acreage such that the total bonus/rental ultimately required may either exceed the bonus/rental paid at the lease sale, which will require additional payment by the successful bidder, or allow the successful bidder a refund of excessive payment. The successful bidder will be notified of the determinations by the staff and given an opportunity to revise the bid area acreage, configuration and location as it has been specifically determined. If all or a portion of the bid area is unleaseable due to overlap of an existing lease, the successful bidder will be given an opportunity to accept or reject a new lease on the