

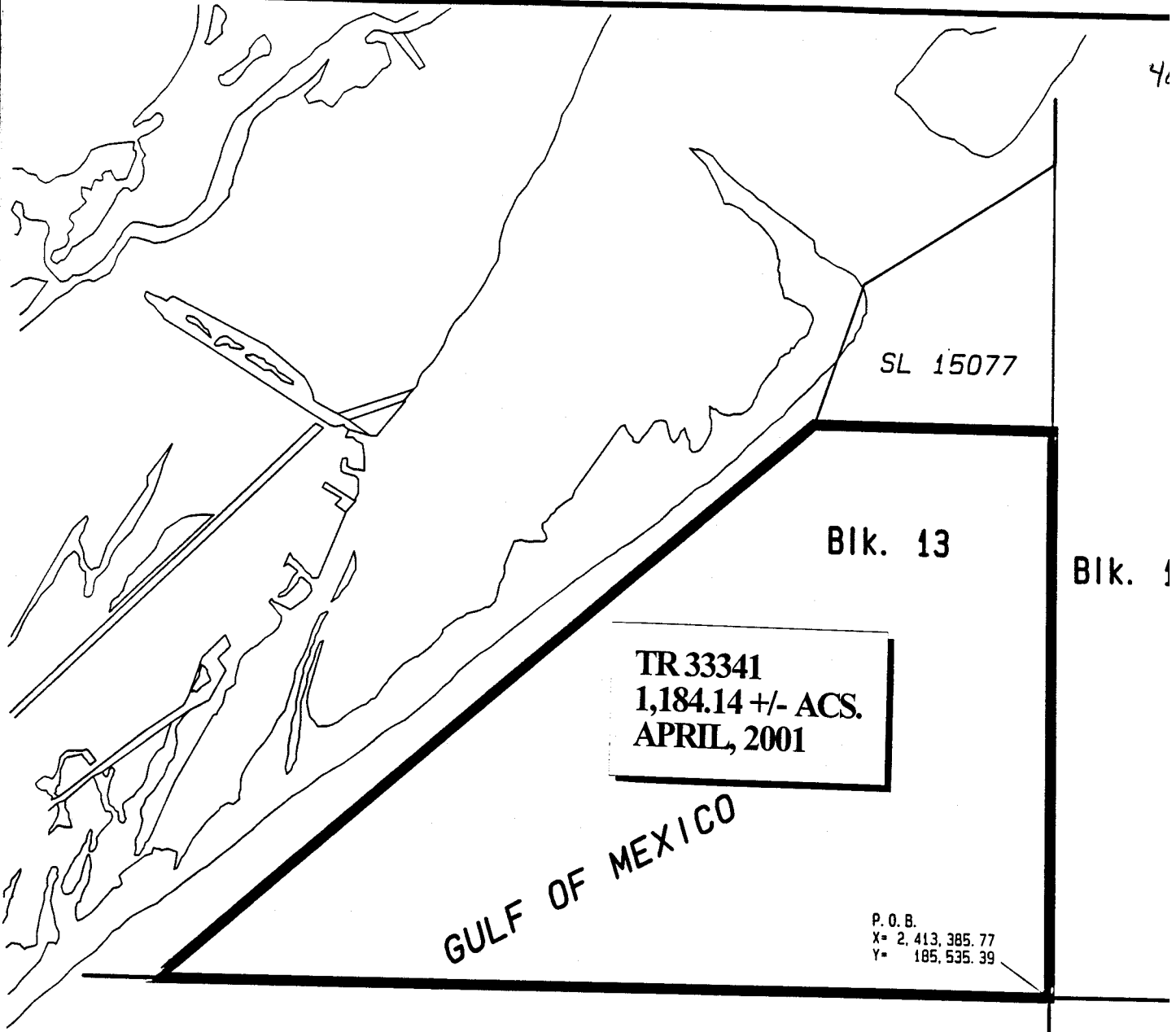
10% administration fee or \$10 and \$5 per acre fees due as a result of staff determination of more State acreage in the bid area than determined by the successful bidder will be paid prior to the lease being issued. A determination of less State acreage in the bid area will result in a return to the successful bidder of any overpayment.

NOTE: The State of Louisiana does hereby reserve, and this lease shall be subject to, the imprescriptible right of surface use in the nature of a servitude in favor of the Department of Natural Resources including its Offices and Commissions, for the sole purpose of implementing, constructing, servicing and maintaining approved coastal zone management and/or restoration projects. Utilization of any and all rights derived under this lease by the mineral lessee or its agents, successors or assigns, shall not interfere with or hinder the reasonable surface use by the Department of Natural Resources, its Offices or Commissions, as hereinabove reserved.

Applicant: South Padre Energy, Inc.

Bidder	Cash Payment	Price / Acre	Rental	Oil	Gas	Other

46



GULF OF MEXICO

SL 15077

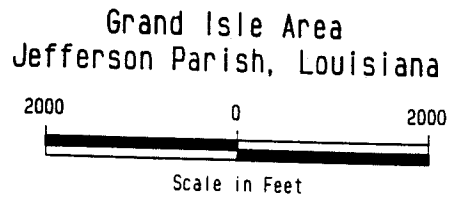
Bik. 13

Bik. 1

TR 33341  
 1,184.14 +/- ACS.  
 APRIL, 2001

P. O. B.  
 X= 2,413,385.77  
 Y= 185,535.39

Bik. 15



Revised:

**TRACT 33342 - PORTION OF BLOCK 15, GRAND ISLE AREA, Jefferson Parish Louisiana**

That portion of Block 15, Grand Isle Area, Jefferson Parish, Louisiana, belonging to the State of Louisiana and not under mineral lease on April 1, 2001, described as follows: Beginning at a point on the South line of Block 15, Grand Isle Area, having Coordinates of X = 2,406,006.75 and Y = 170,777.35; thence North 14,758.04 feet to a point on the North line of said Block 15 having Coordinates of X = 2,406,006.75 and Y = 185,535.39; thence East 7,379.02 feet on the North line of said Block 15 to its Northeast corner having Coordinates of X = 2,413,385.77 and Y = 185,535.39; thence South 14,200.22 feet on the East line of said Block 15 to a point on the 1975 3-Mile Decree Line having Coordinates of X = 2,413,385.77 and Y = 171,335.1; thence Southwesterly on a straight line on said 3-Mile Decree Line to a point on the South line of said Block 15 having Coordinates of X = 2,412,726.47 and Y = 170,777.35; thence West 6,719.72 feet on the South line of said Block 15 to the point of beginning, containing approximately 2,495.78 acres, as shown outlined in red on a plat on file in the Office of Mineral Resources, Department of Natural Resources, as provided by the applicant, **LESS AN** **EXCEPT** that portion thereof, if any, which is more than three nautical miles from the coast line as determined by the Report of the Special Master in the litigation in the Supreme Court of the United States styled United States State of Louisiana et al No. 9 Original, said three mile line as set out in the June, 1975, decree of the Supreme Court. All bearings, distances and coordinates are based on Louisiana Coordinate System of 1927 (South Zone)

NOTE: The boundary description and plat for this tract as shown and advertised were supplied by the nominating party and have not been checked for accuracy by the staff of the Office of Mineral Resources. Anything which may affect the acreage, the shape or the location of the tract, such as non-closure of or incorrect X, Y coordinates of title disputed acreage, or which may affect the status of the tract for leasing, such as overlap of prior leases or nominated tracts, or which may affect potential operations on leases taken, such as inclusion in areas under the jurisdiction of the Department of Wildlife and Fisheries, will not be specifically determined unless and until a bid on this tract is accepted by the Mineral Board; which bid will be accepted on a per acre basis and which acceptance will be conditional upon such specific determinations being made. Once a bid is conditionally accepted by the Mineral Board, the staff will within a period following the date of the lease sale, determine the acreage, shape and location of the potential lease area of the tract, the status for leasing of all or any portion thereof, and all conditions which may affect potential operations thereon. These determinations may render all or a portion of the bid area unleaseable or may increase or decrease the State claimed acreage such that the total bonus/rental ultimately required may either exceed the bonus/rental paid at the lease sale, which will require additional payment by the successful bidder, or allow the successful bidder a refund of excessive payment. The successful bidder will be notified of the determinations by the staff and given an opportunity to view the bid area acreage, configuration and location as it has been specifically determined. If all or a portion of the bid area is

unleasable due to overlap of an existing lease, the successful bidder will be given an opportunity to accept or reject a new lease on that portion of the bid area which is not unleasable. If rejected, the bid and all monies accompanying the bid will be returned to the successful bidder and no lease will be issued. In all other cases a new lease will be issued and any additional per acre bonus/rental 10% administration fee or \$10 and \$5 per acre fees due as a result of staff determination of more State acreage in the bid area than determined by the successful bidder will be paid prior to the lease being issued. A determination of less State acreage in the bid area will result in a return to the successful bidder of any overpayment.

NOTE: The State of Louisiana does hereby reserve, and this lease shall be subject to, the imprescriptible right of surface use in the nature of a servitude in favor of the Department of Natural Resources including its Offices and Commissions, for the sole purpose of implementing, constructing, servicing and maintaining approved coastal zone management and/or restoration projects. Utilization of any and all rights derived under this lease by the mineral lessee or its agents, successors or assigns, shall not interfere with or hinder the reasonable surface use by the Department of Natural Resources, its Offices or Commissions, as hereinabove reserved.

Applicant: South Padre Energy, Inc.

Bidder	Cash Payment	Price / Acre	Rental	Oil	Gas	Other

Blk. 13

Blk. 12 4

Blk. 15

TR 33342  
2,495.78 +/- ACS.  
APRIL, 2001

Blk. 16

SL 799

GULF OF MEXICO

P. O. B.  
X= 2,406,006.75  
Y= 170,777.35

L. A.  
U. S. A.

Blk. 24

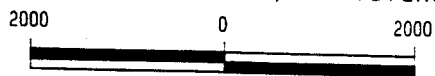
Blk. 23

NAD 27 LAMBERT L.A. SOUTH ZONE



Revised:

Grand Isle Area  
Jefferson Parish, Louisiana



Scale in Feet

**TRACT 33343 - PORTION OF BLOCK 15, GRAND ISLE AREA, Jefferson and Lafourche Parishes, Louisiana**

That portion of Block 15, Grand Isle Area, Jefferson and Lafourche Parishes, Louisiana, belonging to the State of Louisiana and not under mineral lease April 11, 2001, described as follows: Beginning at a point on the South line of Block 15, Grand Isle Area, having Coordinates of X = 2,406,006.75 and Y = 170,777.35; thence West 7,379.02 feet on the South line of said Block 15 to its Southwest corner having Coordinates of X = 2,398,627.73 and Y = 170,777.35; thence North 11,964.72 feet on the West line of said Block 15 to its Northwest corner having Coordinates of X = 2,398,627.73 and Y = 182,742.07; thence Northeasterly on a straight line to a point on the North line of said Block 15 having Coordinates of X = 2,401,929.02 and Y = 185,535.39; thence East 4,077.73 feet on the North line of said Block 15 to a point having Coordinates of X = 2,406,006.75 and Y = 185,535.39; thence South 14,758.04 feet to the point of beginning, containing approximate **2,394.15 acres**, as shown outlined in red on a plat on file in the Office of Mineral Resources, Department of Natural Resources, as provided by the applicant. All bearings, distances and coordinates are based on Louisiana Coordinate System of 1927 (South Zone).

NOTE: The boundary description and plat for this tract as shown and advertised were supplied by the nominating party and have not been checked for accuracy by the staff of the Office of Mineral Resources. Anything which may affect the acreage, the shape or the location of the tract, such as non-closure of or incorrect X, Y coordinates, title disputed acreage, or which may affect the status of the tract for leasing, such as overlap of prior leases or nominated tracts, which may affect potential operations on leases taken, such as inclusion in areas under the jurisdiction of the Department of Wildlife and Fisheries, will not be specifically determined unless and until a bid on this tract is accepted by the Mineral Board; which bid will be accepted on a per acre basis and which acceptance will be conditional upon such specific determinations being made. Once a bid is conditionally accepted by the Mineral Board, the staff will, within a period following the date of the lease sale, determine the acreage, shape and location of the potential lease area of the tract, the status for leasing of all or any portion thereof, and all conditions which may affect potential operations thereon. These determinations may render all or a portion of the bid area unleaseable or may increase or decrease the State claimed acreage such that the total bonus/rental ultimately required may either exceed the bonus/rental paid at the lease sale, which will require additional payment by the successful bidder, or allow the successful bidder a refund of excessive payment. The successful bidder will be notified of the determinations by the staff and given an opportunity to view the bid area acreage, configuration and location as it has been specifically determined. If all or a portion of the bid area is unleaseable due to overlap of an existing lease, the successful bidder will be given an opportunity to accept or reject a new lease on that portion of the bid area which is not unleaseable. If rejected, the bid and all monies accompanying the bid will be returned to the successful bidder and no lease will be issued. In all other cases a new lease will be issued and any additional per acre bonus/rental

10% administration fee or \$10 and \$5 per acre fees due as a result of staff determination of more State acreage in the bid area than determined by the successful bidder will be paid prior to the lease being issued. A determination of less State acreage in the bid area will result in a return to the successful bidder of any overpayment.

NOTE: The State of Louisiana does hereby reserve, and this lease shall be subject to, the imprescriptible right of surface use in the nature of a servitude in favor of the Department of Natural Resources, including its Offices and Commissions, for the sole purpose of implementing, constructing, servicing and maintaining approved coastal zone management and/or restoration projects. Utilization of any and all rights derived under this lease by the mineral lessee or its agents, successors or assigns, shall not interfere with and shall not hinder the reasonable surface use by the Department of Natural Resources, its Offices or Commissions, as hereinabove reserved.

Applicant: South Padre Energy, Inc.

Bidder	Cash Payment	Price / Acre	Rental	Oil	Gas	Othe



JEFFERSON PARISH  
LAFOURCHE PARISH

GULF OF MEXICO

Bik. 15

Bik. 14

TR 33343  
2,394.15 +/- ACS.  
APRIL, 2001

P. O. B.  
X= 2,406,006.75  
Y= 170,777.35

Bik. 25

SL 3768

Bik. 24

NAD 27 LAMBERT LA. SOUTH ZONE



Revised:

Grand Isle Area  
Lafourche & Jefferson Parishes, Louisiana

2000 0 2000



Scale in Feet



**TRACT 33344 - PORTION OF BLOCK 14, GRAND ISLE AREA, Jefferson and Lafourche Parishes, Louisiana**

That portion of Block 14, Grand Isle Area, Jefferson and Lafourche Parishes, Louisiana, belonging to the State of Louisiana and not under mineral lease April 11, 2001, described as follows: Beginning at the Southwest corner of Block 14, Grand Isle Area, having Coordinates of X = 2,385,227.73 and Y = 170,777.35; thence Northwesterly on a straight to a point on the North line of said Block 14; thence Northeasterly on a straight line to a point having Coordinates of X = 2,385,833 and Y = 171,938; thence Northeasterly on a straight line to a point having Coordinates of X = 2,393,610 and Y = 178,130; thence Northeasterly on a straight line to a point having Coordinates of X = 2,398,175 and Y = 182,359; thence Northeasterly on a straight line to the Northeast corner of said Block 14 having Coordinates of X = 2,398,627.73 and Y = 182,742.07; thence South 11,964.72 feet on the East line of said Block 14 to its Southeast corner having Coordinates of X = 2,398,627.73 and Y = 170,777.35; thence West 13,400 feet on the South line of said Block 14 to the point of beginning, containing approximately 1,890 acres, as shown outlined in red on a plat on file in the Office of Mineral Resources, Department of Natural Resources, as provided by the applicant. All bearings, distances and coordinates are based on Louisiana Coordinate System of 1927 (South Zone)

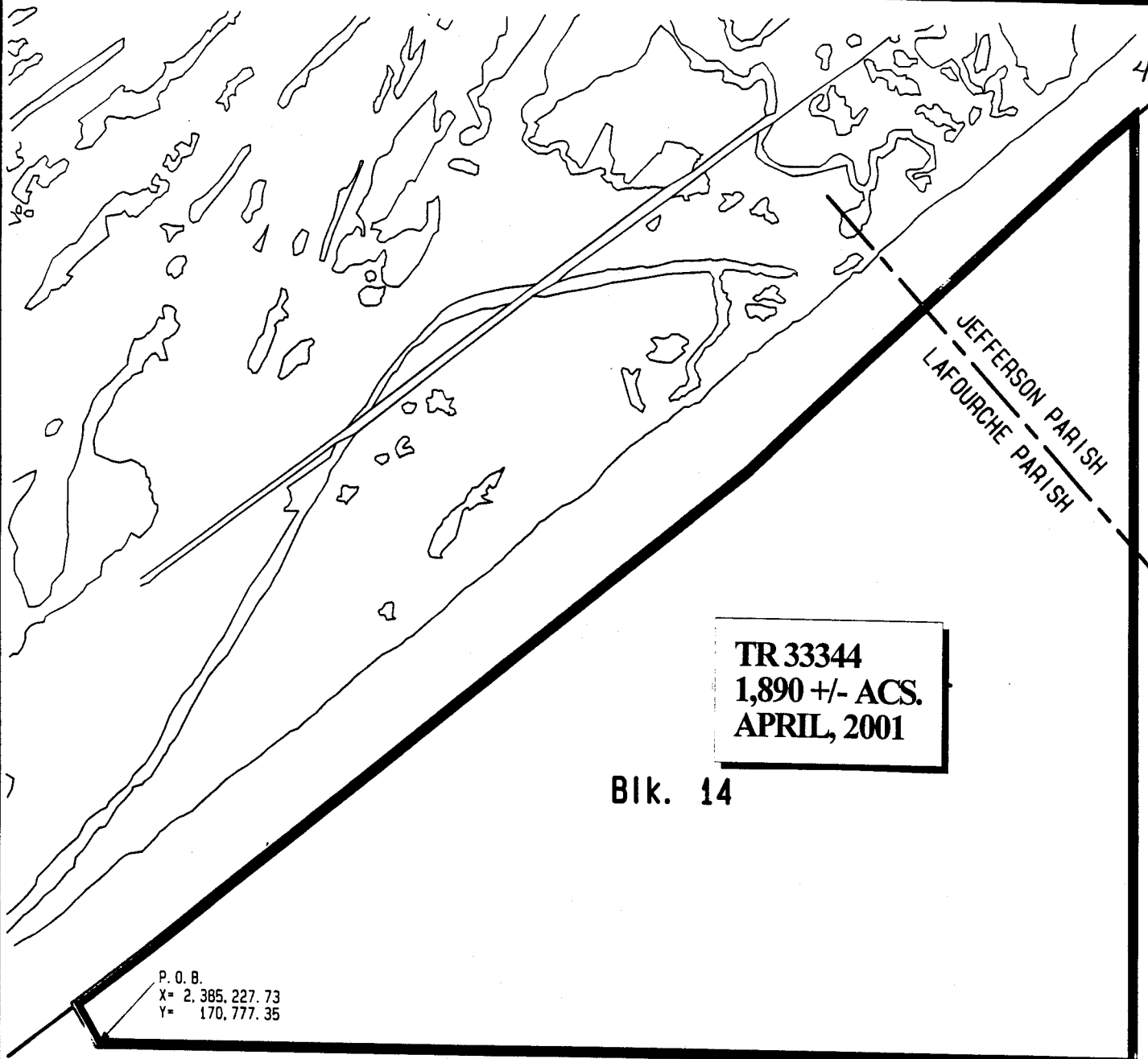
NOTE: The boundary description and plat for this tract as shown and advertised were supplied by the nominating party and have not been checked for accuracy by the staff of the Office of Mineral Resources. Anything which may affect the acreage, the shape or the location of the tract, such as non-closure of or incorrect X, Y coordinates, title disputed acreage, or which may affect the status of the tract for leasing, such as overlap of prior leases or nominated tracts, which may affect potential operations on leases taken, such as inclusion in areas under the jurisdiction of the Department of Wildlife and Fisheries, will not be specifically determined unless and until a bid on this tract is accepted by the Mineral Board; which bid will be accepted on a per acre basis and which acceptance will be conditional upon such specific determinations being made. Once a bid is conditionally accepted by the Mineral Board, the staff will, within a period following the date of the lease sale, determine the acreage, shape and location of the potential lease area of the tract, the status for leasing of all or any portion thereof, and all conditions which may affect potential operations thereon. These determinations may render all or a portion of the bid area unleaseable or may increase or decrease the State claimed acreage such that the total bonus/rental ultimately required may either exceed the bonus/rental paid at the lease sale, which will require additional payment by the successful bidder, or allow the successful bidder a refund of excessive payment. The successful bidder will be notified of the determinations by the staff and given an opportunity to view the bid area acreage, configuration and location as it has been specifically determined. If all or a portion of the bid area is unleaseable due to overlap of an existing lease, the successful bidder will be given an opportunity to accept or reject a new lease on that portion of the bid area which is not unleaseable. If rejected, the bid and all monies accompanying the bid will be returned to the successful bidder and no lease will be issued. In all other cases

a new lease will be issued and any additional per acre bonus/rental, 10% administration fee or \$10 and \$5 per acre fees due as a result of staff determination of more State acreage in the bid area than determined by the successful bidder will be paid prior to the lease being issued. A determination of less State acreage in the bid area will result in a return to the successful bidder of any overpayment.

NOTE: The State of Louisiana does hereby reserve, and this lease shall be subject to, the imprescriptible right of surface use in the nature of a servitude in favor of the Department of Natural Resources including its Offices and Commissions, for the sole purpose of implementing, constructing, servicing and maintaining approved coastal zone management and/or restoration projects. Utilization of any and all rights derived under this lease by the mineral lessee or its agents, successors or assigns, shall not interfere with nor hinder the reasonable surface use by the Department of Natural Resources, its Offices or Commissions, as hereinabove reserved.

Applicant: South Padre Energy, Inc.

Bidder	Cash Payment	Price / Acre	Rental	Oil	Gas	Other



BIK. 15

TR 33344  
1,890 +/- ACS.  
APRIL, 2001

BIK. 14

P. O. B.  
X= 2,385,227.73  
Y= 170,777.35

BIK. 25

GULF OF MEXICO

SL 3768

NAD 27 LAMBERT LA. SOUTH ZONE



Grand Isle Area  
Lafourche & Jefferson Parishes, Louisiana

2000 0 2000



Scale in Feet

Revised:

**TRACT 33345 - PORTION OF BLOCK 20, SOUTH PASS AREA, Plaquemines Parish, Louisiana**

That portion of Block 20, South Pass Area, Plaquemines Parish, Louisiana, belonging to the State of Louisiana and not under mineral lease on April 1, 2001, described as follows: Beginning at the Southeast corner of Block 20, South Pass Area, having Coordinates of X = 2,719,234.00 and Y = 126,424.00; thence West 6,158.73 to a point having Coordinates of X = 2,713,075.26 and Y = 126,424.00 being on the boundary of the Pass-A-Loutre Wildlife Management Area; thence northeasterly on the boundary of the Pass-A-Loutre Wildlife Management Area to a point on the East line of Block 20 having Coordinates of X = 2,719,234.00 and Y = 133,966.81; thence South 7,542.81 feet to the point of beginning, containing approximately **510.61 acres**, as shown outlined in red on a plat on file in the Office of Mineral Resources, Department of Natural Resources, as provided by the applicant. All bearings, distances and coordinates are based on Louisiana Coordinate System of 1927 (South Zone)

NOTE: The boundary description and plat for this tract as shown and advertised were supplied by the nominating party and have not been checked for accuracy by the staff of the Office of Mineral Resources. Anything which may affect the acreage, the shape or the location of the tract, such as non-closure of or incorrect X, Y coordinates of title disputed acreage, or which may affect the status of the tract for leasing, such as overlap of prior leases or nominated tracts, or which may affect potential operations on leases taken, such as inclusion in areas under the jurisdiction of the Department of Wildlife and Fisheries, will not be specifically determined unless and until a bid on this tract is accepted by the Mineral Board; which bid will be accepted on a per acre basis and which acceptance will be conditional upon such specific determinations being made. Once a bid is conditionally accepted by the Mineral Board, the staff will, within a period following the date of the lease sale, determine the acreage, shape and location of the potential lease area of the tract, the status for leasing of all or any portion thereof, and all conditions which may affect potential operations thereon. These determinations may render all or a portion of the bid area unleaseable or may increase or decrease the State claimed acreage such that the total bonus/rental ultimately required may either exceed the bonus/rental paid at the lease sale, which will require additional payment by the successful bidder, or allow the successful bidder a refund of excessive payment. The successful bidder will be notified of the determinations by the staff and given an opportunity to view the bid area acreage, configuration and location as it has been specifically determined. If all or a portion of the bid area is unleaseable due to overlap of an existing lease, the successful bidder will be given an opportunity to accept or reject a new lease on that portion of the bid area which is not unleaseable. If rejected, the bid and all monies accompanying the bid will be returned to the successful bidder and no lease will be issued. In all other cases a new lease will be issued and any additional per acre bonus/rental, 10% administration fee or \$10 and \$5 per acre fees due as a result of staff determination of more State acreage in the bid area shall be determined by the successful bidder will be paid prior to the lease being issued. A determination of less State acreage in the bid area

will result in a return to the successful bidder of any overpayment

NOTE: It appears, according to our records, that a portion of this tract is located within the restrictive anchorage area as set out by the U. S. Coast Guard.

NOTE: The State of Louisiana does hereby reserve, and this lease shall be subject to, the imprescriptible right of surface use in the nature of a servitude in favor of the Department of Natural Resources including its Offices and Commissions, for the sole purpose of implementing, constructing, servicing and maintaining approved coastal zone management and/or restoration projects. Utilization of any and all rights derived under this lease by the mineral lessee or its agents, successors or assigns, shall not interfere with and shall not hinder the reasonable surface use by the Department of Natural Resources, its Offices or Commissions, as hereinabove reserved.

Applicant: Jenkins Companies

Bidder	Cash Payment	Price / Acre	Rental	Oil	Gas	Other

PASS-A-LOUTRE MANAGEMENT AREA

2

20

Approximate Boundary  
Pass-A-Loutre WMA

TR 33345  
510.61 +/- ACS.  
APRIL, 2001

SL 14860

P.O.B.  
X=2719234.00  
Y=126424.00

SOUTH PASS AREA  
PLAQUEMINES PARISH, LA.

1" = 2000'

71

2000' 1000' 500' 250' 125' 62.5' 31.25' 15.625' 7.8125' 3.90625' 1.953125' 0.9765625'

**TRACT 33346 - PORTION OF BLOCK 19, SOUTH PASS AREA, Plaquemines Parish Louisiana**

That portion of Block 19, South Pass Area, Plaquemines Parish, Louisiana belonging to the State of Louisiana and not under mineral lease on April 1 2001, described as follows: Beginning at the Southwest corner of Block 1 South Pass Area, having Coordinates of X = 2,719,234.00 and Y = 126,424.00; thence North 7,542.81 feet along the West line of Block 19 to a point having Coordinates of X = 2,719,234.00 and Y = 133,966.81 being on the boundary of the Pass-A-Loutre Wildlife Management Area; thence northeasterly along the boundary of Pass-A-Loutre Wildlife Management Area to a point having Coordinates of X = 2,723,386.73 and Y = 141,182.00 being on the north line of Block 19; thence East 3,226.25 feet to a point having Coordinates of X = 2,726,612.98 and Y = 141,182.00; thence South 14,758 feet to a point having Coordinates of X = 2,726,612.98 and Y = 126,424.00; thence West 7,378.98 feet to the point of beginning, containing approximately **2,132.1 acres**, as shown outlined in red on a plat on file in the Office of Mineral Resources, Department of Natural Resources, as provided by the applicant. All bearings, distances and coordinates are based on Louisiana Coordinate System of 1927 (South Zone).

NOTE: The boundary description and plat for this tract as shown and advertised were supplied by the nominating party and have not been checked for accuracy by the staff of the Office of Mineral Resources. Anything which may affect the acreage, the shape or the location of the tract, such as non-closure of or incorrect X, Y coordinates, title disputed acreage, or which may affect the status of the tract for leasing, such as overlap of prior leases or nominated tracts, which may affect potential operations on leases taken, such as inclusion in areas under the jurisdiction of the Department of Wildlife and Fisheries, will not be specifically determined unless and until a bid on this tract is accepted by the Mineral Board; which bid will be accepted on a per acre basis and which acceptance will be conditional upon such specific determinations being made. Once a bid is conditionally accepted by the Mineral Board, the staff will, within a period following the date of the lease sale, determine the acreage, shape and location of the potential lease area of the tract, the status for leasing of all or any portion thereof, and all conditions which may affect potential operations thereon. These determinations may render all or a portion of the bid area unleaseable or may increase or decrease the State claimed acreage such that the total bonus/rental ultimately required may either exceed the bonus/rental paid at the lease sale, which will require additional payment by the successful bidder, or allow the successful bidder a refund of excessive payment. The successful bidder will be notified of the determinations by the staff and given an opportunity to view the bid area acreage, configuration and location as it has been specifically determined. If all or a portion of the bid area is unleaseable due to overlap of an existing lease, the successful bidder will be given an opportunity to accept or reject a new lease on that portion of the bid area which is not unleaseable. If rejected, the bid and all monies accompanying the bid will be returned to the successful bidder and no lease will be issued. In all other cases a new lease will be issued and any additional per acre bonus/rental

10% administration fee or \$10 and \$5 per acre fees due as a result of staff determination of more State acreage in the bid area than determined by the successful bidder will be paid prior to the lease being issued. A determination of less State acreage in the bid area will result in a return to the successful bidder of any overpayment.

NOTE: It appears, according to our records, that a portion of this tract is located within the restrictive anchorage area as set out by the U. S. Coast Guard.

NOTE: The State of Louisiana does hereby reserve, and this lease shall be subject to, the imprescriptible right of surface use in the nature of a servitude in favor of the Department of Natural Resources including its Offices and Commissions, for the sole purpose of implementing, constructing, servicing and maintaining approved coastal zone management and/or restoration projects. Utilization of any and all rights derived under this lease by the mineral lessee, its agents, successors or assigns, shall not interfere with or hinder the reasonable surface use by the Department of Natural Resources, its Offices or Commissions, as hereinabove reserved.

Applicant: Jenkins Companies

Bidder	Cash Payment	Price / Acre	Rental	Oil	Gas	Other