

P.O.B.
X = 1,525,290.00
Y = 433,440.00

TR 33386
546 +/- ACS.
APRIL, 2001

CAMERON PARISH LOUISIANA

SCALE : 1" = 2000'

176

TRACT 33387 - Iberville and St. Martin Parishes, Louisiana

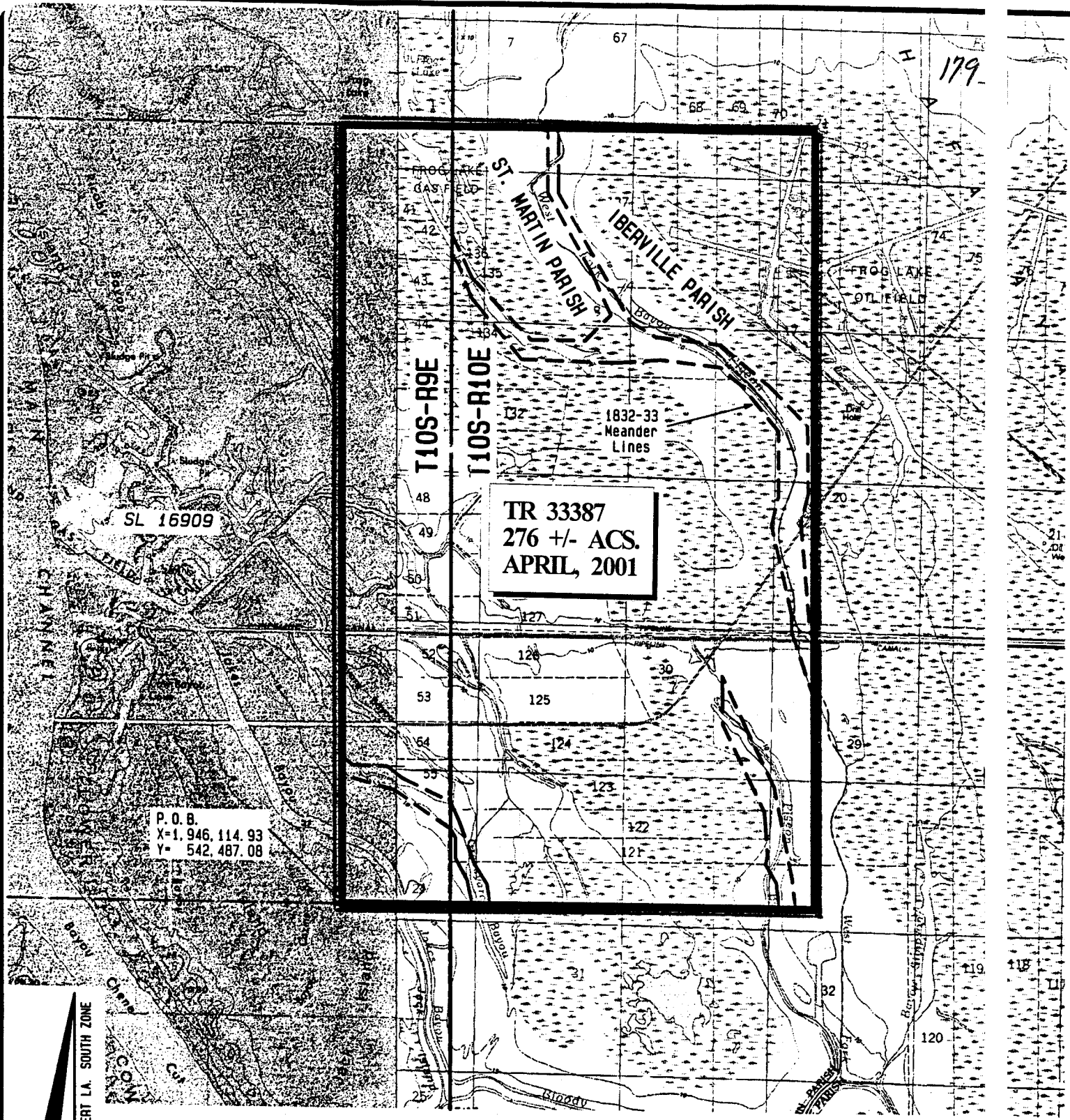
All of the lands now or formerly constituting the beds and bottoms of all water bodies of every nature and description and all islands and other lands formed by accretion or reliction, except tax lands, owned by and not under mineral lease from the State of Louisiana on April 11, 2001, situated in Iberville and St. Martin Parishes, Louisiana, within the following described boundaries: Beginning at the Southeast corner of State Lease No. 16909 having Coordinates of X = 1,946,114.93 and Y = 542,487.08; thence North 17,000.00 feet along the East line of said State Lease No. 16909 to its Northeast corner having Coordinates of X = 1,946,114.93 and Y = 559,487.08; thence East 10,585.07 feet to a point having Coordinates of X = 1,956,700.00 and Y = 559,487.08; thence South 17,000.00 feet to a point having Coordinates of X = 1,956,700.00 and Y = 542,487.08; thence West 10,585.07 feet to the point of beginning, **LESS AND EXCEPT** all that portion of State Lease No. 1624 that may lie within the above described tract as of January 19, 2001 containing approximately 276 acres, as shown outlined in red on a plat on file in the Office of Mineral Resources, Department of Natural Resources, as provided by the applicant. All bearings, distances and coordinates are based on Louisiana Coordinate System of 1927 (South Zone).

NOTE: The boundary description and plat for this tract as shown and as advertised were supplied by the nominating party and have not been checked for accuracy by the staff of the Office of Mineral Resources. Anything which may affect the acreage, the shape or the location of the tract, such as non-closure of or incorrect X, Y coordinates or title disputed acreage, or which may affect the status of the tract for leasing, such as overlap of prior leases or nominated tracts, or which may affect potential operations on leases taken, such as inclusion in areas under the jurisdiction of the Department of Wildlife and Fisheries, will not be specifically determined unless and until a bid on this tract is accepted by the Mineral Board; which bid will be accepted on a per acre basis and which acceptance will be conditional upon such specific determinations being made. Once a bid is conditionally accepted by the Mineral Board, the staff will within a period following the date of the lease sale, determine the acreage, shape and location of the potential lease area of the tract, the status for leasing of all or any portion thereof, and any conditions which may affect potential operations thereon. These determinations may render all or a portion of the bid area unleaseable or may increase or decrease the State claimed acreage such that the total bonus/rental ultimately required may either exceed the bonus/rental paid at the lease sale, which will require additional payment by the successful bidder, or allow the successful bidder a refund of excessive payment. The successful bidder will be notified of the determinations by the staff and given an opportunity to view the bid area acreage, configuration and location as it has been specifically determined. If all or a portion of the bid area is unleaseable due to overlap of an existing lease, the successful bidder will be given an opportunity to accept or reject a new lease on the portion of the bid area which is not unleaseable. If rejected, the bid and all monies accompanying the bid will be returned to the successful bidder and no lease will be issued. In all other cases a new lease will be issued and any additional per acre bonus/rental

10% administration fee or \$10 and \$5 per acre fees due as a result of staff determination of more State acreage in the bid area than determined by the successful bidder will be paid prior to the lease being issued. A determination of less State acreage in the bid area will result in a return to the successful bidder of any overpayment

Applicant: JMR Development, Inc.

Bidder	Cash Payment	Price / Acre	Rental	Oil	Gas	Other



SL 16909

TR 33387
276 +/- ACS.
APRIL, 2001

P. O. B.
X= 1,946,114.93
Y= 542,487.08

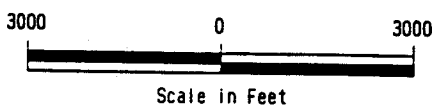
NAD 27 LAMBERT LA. SOUTH ZONE

Topography obtained from USC&GS Quadrangles
LAKE MONGOULOIS, LA., 1973 Edition &
GRAND RIVER, LA., 1992 Edition.



REVISED:

St. Martin & Iberville Parishes, Louisiana



Scale in Feet

TRACT 33388 - St. Martin Parish, Louisiana

All of the lands now or formerly constituting the beds and bottoms of all water bodies of every nature and description and all islands and other lands formed by accretion or reliction, except tax lands, owned by and not under mineral lease from the State of Louisiana on April 11, 2001, situated in St. Martin Parish, Louisiana, within the following described boundaries: Beginning at a point on the South line of State Lease No. 16909 having Coordinates of X = 1,939,900.00 and Y = 542,487.08; thence South 18,387.00 feet to a point having Coordinates of X = 1,939,900.00 and Y = 524,100.00; thence West 18,400.00 feet to a point having Coordinates of X = 1,921,500.00 and Y = 524,100.00; thence North 18,387.08 feet to a point having Coordinates of X = 1,921,500.00 and Y = 542,487.08; thence East 6,134.93 feet to the Southwest corner of said State Lease No. 16909 having Coordinates of X = 1,927,634.93 and Y = 542,487.08; thence East 12,265.07 feet along the South line of said State Lease No. 16909 to the point of beginning, **LESS AND EXCEPT** that portion of State Lease No. 4956 that lies entirely within the above described tract, containing approximately 1,008 acres, as shown outlined in red on a plat on file in the Office of Mineral Resources, Department of Natural Resources. All bearings, distances and coordinates are based on the Louisiana Coordinate System of 1927 (South Zone).

NOTE: The boundary description and plat for this tract as shown and as advertised were supplied by the nominating party and have not been checked for accuracy by the staff of the Office of Mineral Resources. Anything which may affect the acreage, the shape or the location of the tract, such as non-closure of or incorrect X, Y coordinates or title disputed acreage, or which may affect the status of the tract for leasing, such as overlap of prior leases or nominated tracts, or which may affect potential operations on leases taken, such as inclusion in areas under the jurisdiction of the Department of Wildlife and Fisheries, will not be specifically determined unless and until a bid on this tract is accepted by the Mineral Board; which bid will be accepted on a per acre basis and which acceptance will be conditional upon such specific determinations being made. Once a bid is conditionally accepted by the Mineral Board, the staff will within a period following the date of the lease sale, determine the acreage, shape and location of the potential lease area of the tract, the status for leasing of all or any portion thereof, and any conditions which may affect potential operations thereon. These determinations may render all or a portion of the bid area unleaseable or may increase or decrease the State claimed acreage such that the total bonus/rental ultimately required may either exceed the bonus/rental paid at the lease sale, which will require additional payment by the successful bidder, or allow the successful bidder a refund of excessive payment. The successful bidder will be notified of the determinations by the staff and given an opportunity to view the bid area acreage, configuration and location as it has been specifically determined. If all or a portion of the bid area is unleaseable due to overlap of an existing lease, the successful bidder will be given an opportunity to accept or reject a new lease on the portion of the bid area which is not unleaseable. If rejected, the bid and all monies accompanying the bid will be returned to the successful bidder and no lease will be issued. In all other cases

a new lease will be issued and any additional per acre bonus/rental 10% administration fee or \$10 and \$5 per acre fees due as a result of staff determination of more State acreage in the bid area than determined by the successful bidder will be paid prior to the lease being issued. A determination of less State acreage in the bid area will result in a return to the successful bidder of any overpayment

Applicant: JMR Development, Inc.

Bidder	Cash Payment	Price / Acre	Rental	Oil	Gas	Other

SL 16909

P. O. B.
X=1,939,900.00
Y= 542,487.08

1832-33
Meander
Lines

TR 33388
1,008 +/- ACS.
APRIL, 2001

SL 4956

T10S-R9E

T11S-R9E

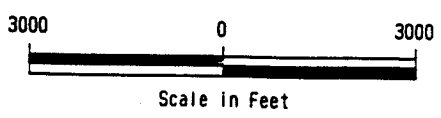
NAD 27 LAMBERT LA. SOUTH ZONE

Topography obtained from USC&GS Quadrangles
LAKE MONGOULOIS, LA., 1973 Edition &
JACKASS BAY, LA., 1973 Edition.



REVISED:

St. Martin Parish, Louisiana



TRACT 33389 - Iberville and St. Martin Parishes, Louisiana

All of the lands now or formerly constituting the beds and bottoms of all water bodies of every nature and description and all islands and other lands formed by accretion or reliction, except tax lands, owned by and not under mineral lease from the State of Louisiana on April 11, 2001, situated in Iberville and St. Martin Parishes, Louisiana, within the following described boundaries: Beginning at a point on the South line of State Lease No. 16909 having Coordinates of X = 1,939,900.00 and Y = 542,487.08; thence East 6,214.93 feet along the South line of said State Lease No. 16909 to its Southeast corner having Coordinates of X = 1,946,114.93 and Y = 542,487.08; thence East 10,585.07 feet to a point having Coordinates of X = 1,956,700.00 and Y = 542,487.08; thence South 18,387.08 feet to a point having Coordinates of X = 1,956,700.00 and Y = 524,100.00; thence West 16,800.00 feet to a point having Coordinates of X = 1,939,900.00 and Y = 524,100.00; thence North 18,387.08 feet to the point of beginning, **LESS AND EXCEPT** all that portion of State Lease No. 16240 that may lie within the above described tract as shown on a plat on file in the Office of Mineral Resources, Department of Natural Resources, as provided by the applicant. All bearings, distances and coordinates are based on Louisiana Coordinate System of 1927 (South Zone).

NOTE: The boundary description and plat for this tract as shown and advertised were supplied by the nominating party and have not been checked for accuracy by the staff of the Office of Mineral Resources. Anything which may affect the acreage, the shape or the location of the tract, such as non-closure of or incorrect X, Y coordinates of title disputed acreage, or which may affect the status of the tract for leasing, such as overlap of prior leases or nominated tracts, or which may affect potential operations on leases taken, such as inclusion in areas under the jurisdiction of the Department of Wildlife and Fisheries, will not be specifically determined unless and until a bid on this tract is accepted by the Mineral Board; which bid will be accepted on a per acre basis and which acceptance will be conditional upon such specific determinations being made. Once a bid is conditionally accepted by the Mineral Board, the staff will within a period following the date of the lease sale, determine the acreage, shape and location of the potential lease area of the tract, the status for leasing of all or any portion thereof, and any conditions which may affect potential operations thereon. These determinations may render all or a portion of the bid area unleaseable or may increase or decrease the State claimed acreage such that the total bonus/rental ultimately required may either exceed the bonus/rental paid at the lease sale, which will require additional payment by the successful bidder, or allow the successful bidder a refund of excessive payment. The successful bidder will be notified of the determinations by the staff and given an opportunity to view the bid area acreage, configuration and location as it has been specifically determined. If all or a portion of the bid area is unleaseable due to overlap of an existing lease, the successful bidder will be given an opportunity to accept or reject a new lease on that portion of the bid area which is not unleaseable. If rejected, the bid and all monies accompanying the bid will be returned to the successful bidder and no lease will be issued. In all other cases

a new lease will be issued and any additional per acre bonus/rental 10% administration fee or \$10 and \$5 per acre fees due as a result of staff determination of more State acreage in the bid area the determined by the successful bidder will be paid prior to the lease being issued. A determination of less State acreage in the bid area will result in a return to the successful bidder of any overpayment

Applicant: JMR Development, Inc.

Bidder	Cash Payment	Price / Acre	Rental	Oil	Gas	Other

SL 16909

P. O. B.
X=1,939,900.00
Y= 542,487.08

T10S-R10E

T11S-R10E

TR 33389
1,240 +/- ACS.
APRIL, 2001

T10S-R9E

T11S-R9E

1832-33
Meander
Lines

LAKE CHICOT

Sawyers Cove

Crooking
Cove

Deadman
Bayou

Mile
80

185

0

15

20

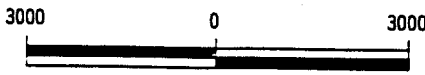
NAD 27 LAMBERT LA. SOUTH ZONE

Topography obtained from USC&GS Quadrangles
LAKE MONGOULOIS, LA. & JACKASS BAY, "
1973 Editions, "GRAND RIVER, LA", 1992 Edition
& "LAKE CHICOT, LA", 1970 Edition, PHOTOREVISED
1980.



REVISED:

St. Martin & Iberville Parishes, Louisiana



Scale in Feet

TRACT 33390 - PORTION OF BLOCK 43, SHIP SHOAL AREA, Terrebonne Parish Louisiana

All of the lands now or formerly constituting the beds and bottoms of all water bodies of every nature and description and all islands and other lands formed by accretion or reliction, except tax lands, belonging to the State of Louisiana and not under mineral lease on April 11, 2001, situated in Terrebonne Parish, Louisiana, and more particularly described as follows: Beginning at a point in Block 43, Ship Shoal Area, having Coordinates of X = 2,179,150.00 and Y = 144,896.79; thence East approximately 7,229.57 feet to a point having Coordinates of X = 2,186,379.57 and Y = 144,896.79; thence South approximately 9,771.992 feet to a point having Coordinates of X = 2,186,379.75 and Y = 134,924.7985; thence West approximately 7,229.57 feet to a point having Coordinates of X = 2,179,175.98 and Y = 134,924.799; thence North approximately 9,771.992 feet to the point of beginning, containing approximately **1,652.06 acres**, as shown outlined in red on a plat on file in the Office of Mineral Resources, Department of Natural Resources, as provided by the applicant. All bearings, distances and coordinates are based on the Louisiana Coordinate System of 1927 (South Zone).

NOTE: The boundary description and plat for this tract as shown and advertised were supplied by the nominating party and have not been checked for accuracy by the staff of the Office of Mineral Resources. Anything which may affect the acreage, the shape or the location of the tract, such as non-closure of or incorrect X, Y coordinates of title disputed acreage, or which may affect the status of the tract for leasing, such as overlap of prior leases or nominated tracts, or which may affect potential operations on leases taken, such as inclusion in areas under the jurisdiction of the Department of Wildlife and Fisheries, will not be specifically determined unless and until a bid on this tract is accepted by the Mineral Board; which bid will be accepted on a per acre basis and which acceptance will be conditional upon such specific determinations being made. Once a bid is conditionally accepted by the Mineral Board, the staff will within a period following the date of the lease sale, determine the acreage, shape and location of the potential lease area of the tract, the status for leasing of all or any portion thereof, and any conditions which may affect potential operations thereon. These determinations may render all or a portion of the bid area unleaseable or may increase or decrease the State claimed acreage such that the total bonus/rental ultimately required may either exceed the bonus/rental paid at the lease sale, which will require additional payment by the successful bidder, or allow the successful bidder a refund of excessive payment. The successful bidder will be notified of the determinations by the staff and given an opportunity to view the bid area acreage, configuration and location as it has been specifically determined. If all or a portion of the bid area is unleaseable due to overlap of an existing lease, the successful bidder will be given an opportunity to accept or reject a new lease on the portion of the bid area which is not unleaseable. If rejected, the bid and all monies accompanying the bid will be returned to the successful bidder and no lease will be issued. In all other cases a new lease will be issued and any additional per acre bonus/rental 10% administration fee or \$10 and \$5 per acre fees due as a result

of staff determination of more State acreage in the bid area than determined by the successful bidder will be paid prior to the lease being issued. A determination of less State acreage in the bid area will result in a return to the successful bidder of any overpayment

NOTE: The State of Louisiana does hereby reserve, and this lease shall be subject to, the imprescriptible right of surface use in the nature of a servitude in favor of the Department of Natural Resources including its Offices and Commissions, for the sole purpose of implementing, constructing, servicing and maintaining approved coastal zone management and/or restoration projects. Utilization of any and all rights derived under this lease by the mineral lessee or its agents, successors or assigns, shall not interfere with nor hinder the reasonable surface use by the Department of Natural Resources, its Offices or Commissions, as hereinabove reserved.

Applicant: Merlin Oil & Gas, Inc.

Bidder	Cash Payment	Price / Acre	Rental	Oil	Gas	Other

P.O.B
X=2179150.00
Y=144896.70

TR 33390
1,652.06 +/- ACS.
APRIL, 2001

I
E
R
E
S

S.L. 16558

SHIP SHOAL AREA
BLOCK 43

TRACT 33391 - PORTION OF BLOCK 54, MAIN PASS AREA, REVISED, Plaquemine Parish, Louisiana

All of the lands now or formerly constituting the beds and bottoms of all water bodies of every nature and description and all islands and other lands formed by accretion or reliction, except tax lands, belonging to the State of Louisiana and not under mineral lease on April 11, 2001, situated in Plaquemine Parish, Louisiana, and more particularly described as follows: Beginning at a point on the West line of Block 54, Main Pass Area, Revised said point having Coordinates of X = 2,679,600.00 and Y = 258,860.00; thence East 14,750.00 feet to a point on the East line of said Block 54 having Coordinates of X = 2,694,350.00 and Y = 258,860.00; thence South 4,700.00 feet along the East line of said Block 54 to the Northeast corner of State Lease No. 16793 having Coordinates of X = 2,694,350.00 and Y = 254,160.00; thence West 2,034.00 feet along the North line of said State Lease No. 16793 to its Northwest corner having Coordinates of X = 2,692,316.00 and Y = 254,160.00; thence South 5,064.00 feet along the West line of said State Lease No. 16793 to its Southwest corner having Coordinates of X = 2,692,316.00 and Y = 249,096.00; thence South 50 degrees 34 minutes 4 seconds East 2,633.01 feet along the South line of said State Lease No. 16793 to its Southeast corner, said corner also being a point on the East line of said Block 54, having Coordinates of X = 2,694,350.00 and Y = 247,424.00; thence South approximately 3,392 feet along the East line of said Block 54 to its Southeast corner; thence Northwesterly approximately 17,273 feet along the Southern boundary of said Block 54 to a corner; thence Southwesterly approximately 2,154 feet along the Southern boundary of said Block 54 to the intersection of a line having a Coordinate of X = 2,679,600, being the Southwest corner of said Block 54; thence North approximately 3,740 feet to the point of beginning, containing approximately **2,499 acres**, as shown outlined in red on a plat on file in the Office of Mineral Resources Department of Natural Resources, as provided by the applicant. All bearings, distances and coordinates are based on Louisiana Coordinate System of 192 (South Zone).

NOTE: The boundary description and plat for this tract as shown and advertised were supplied by the nominating party and have not been checked for accuracy by the staff of the Office of Mineral Resources. Anything which may affect the acreage, the shape or the location of the tract, such as non-closure of or incorrect X, Y coordinates of the title, disputed acreage, or which may affect the status of the tract for leasing, such as overlap of prior leases or nominated tracts, which may affect potential operations on leases taken, such as inclusion in areas under the jurisdiction of the Department of Wildlife and Fisheries, will not be specifically determined unless and until a bid on this tract is accepted by the Mineral Board; which bid will be accepted on a per acre basis and which acceptance will be conditional upon such specific determinations being made. Once a bid is conditionally accepted by the Mineral Board, the staff will within a period following the date of the lease sale, determine the acreage, shape and location of the potential lease area of the tract, the status for leasing of all or any portion thereof, and the conditions which may affect potential operations thereon. These determinations may render all or a portion of the bid area unleaseable or may increase or decrease the State claimed acreage such that the