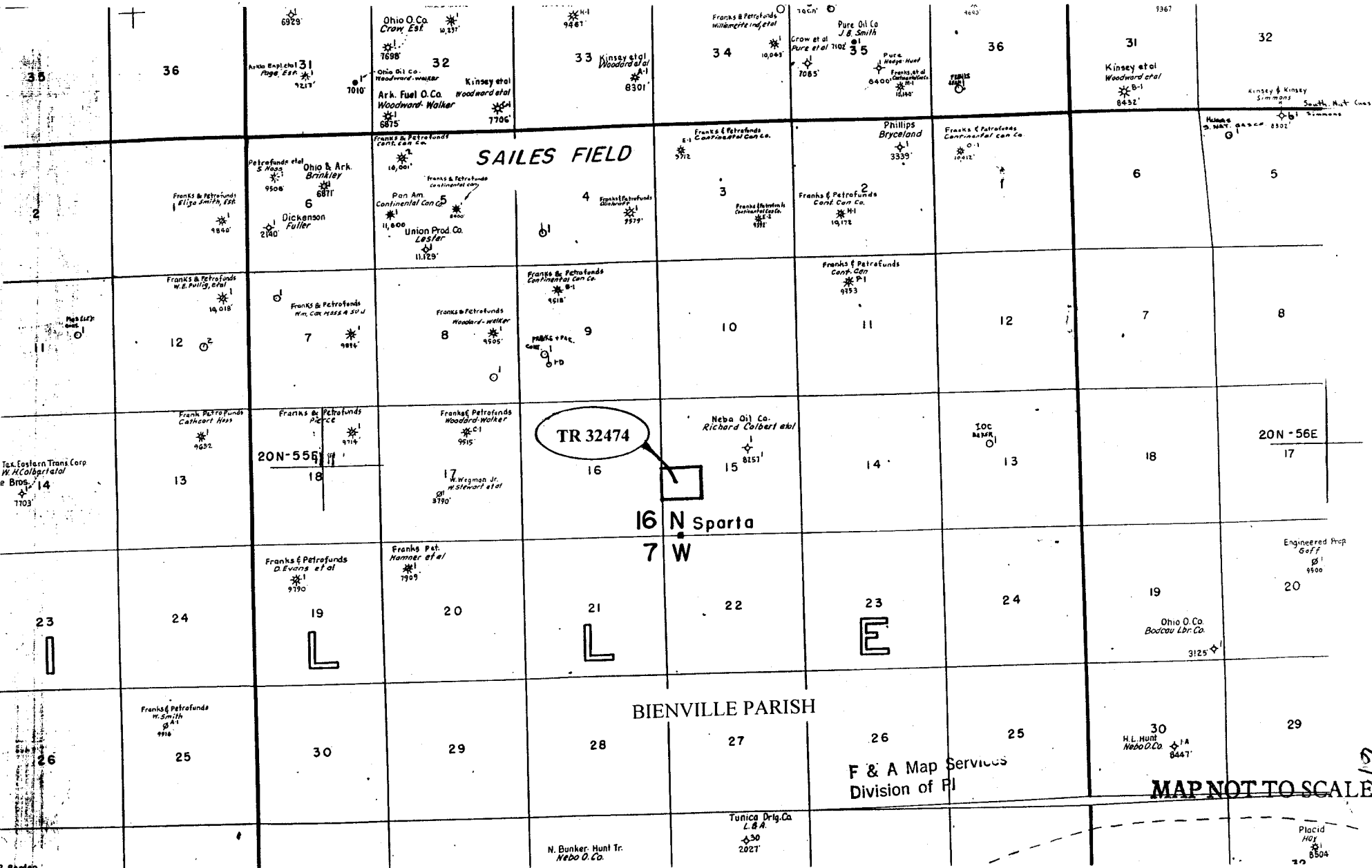


**STATE
AGENCY
TRACTS**

NOT TO BE USED WITH A PORTION BID
FOR INFORMATIONAL PURPOSES ONLY!



SAILES FIELD

BIENVILLE PARISH

TR 32474

16 N Sparta
7 W

F & A Map Services
Division of PI

MAP NOT TO SCALE

19

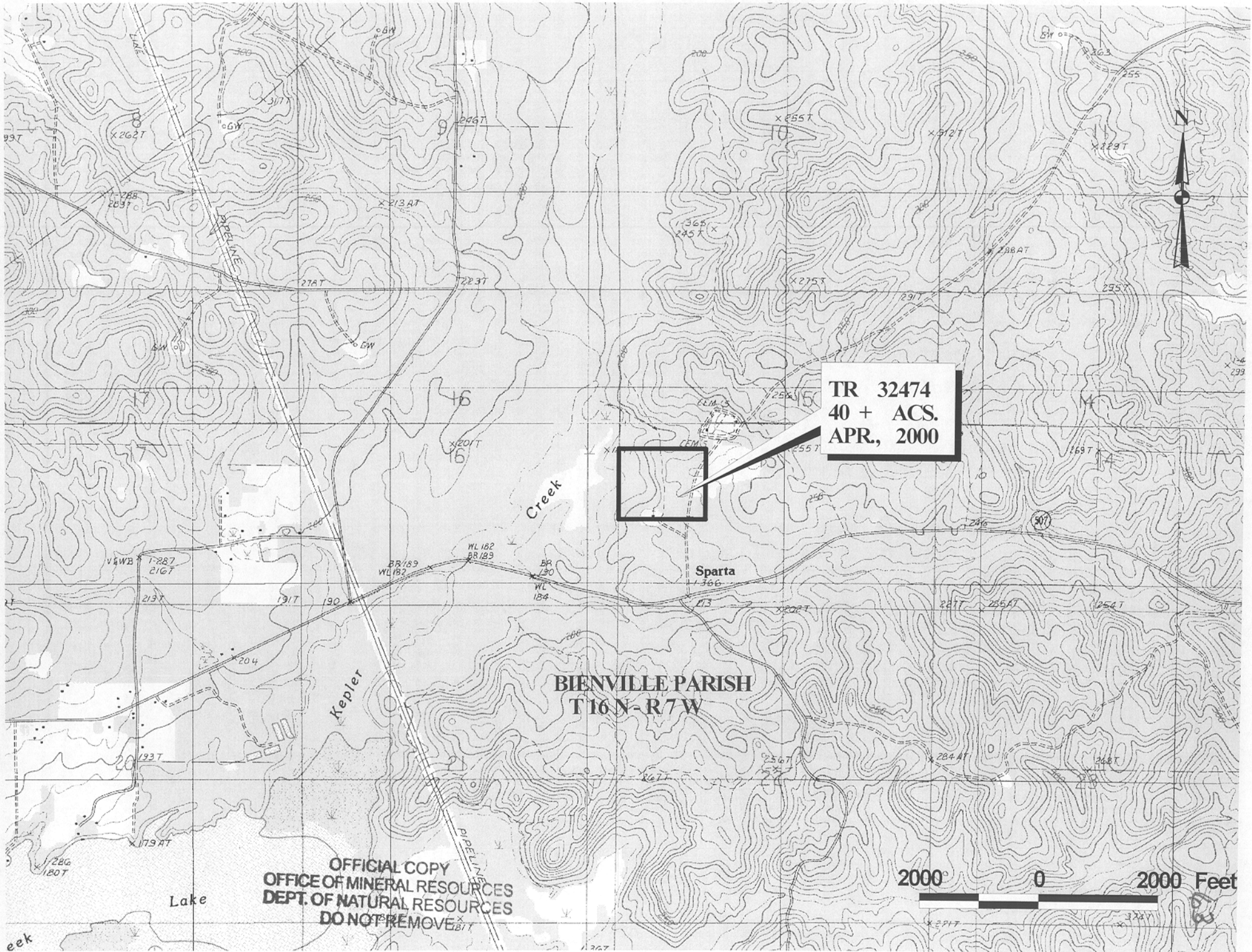
Placid
107
8504

TRACT 32474 - STATE AGENCY - Bienville Parish, Louisiana

A certain tract of land belonging to and not under mineral lease from the Bienville Parish Police Jury, on April 12, 2000, being more fully described as follows: The Northwest Quarter of the Southwest Quarter of Section 15, Township 16 North, Range 7 West, Bienville Parish, Louisiana, excluding beds and bottoms of all navigable waters, containing approximately **40 acres**, as shown outlined in red on a plat on file in the Office of Mineral Resources, Department of Natural Resources.

Applicant: Petro-Land Resources, Inc. to Agency and by Resolution from the Bienville Parish Police Jury authorizing the Mineral Board to act in its behalf.

Bidder	Cash Payment	Price / Acre	Rental	Oil	Gas	Other



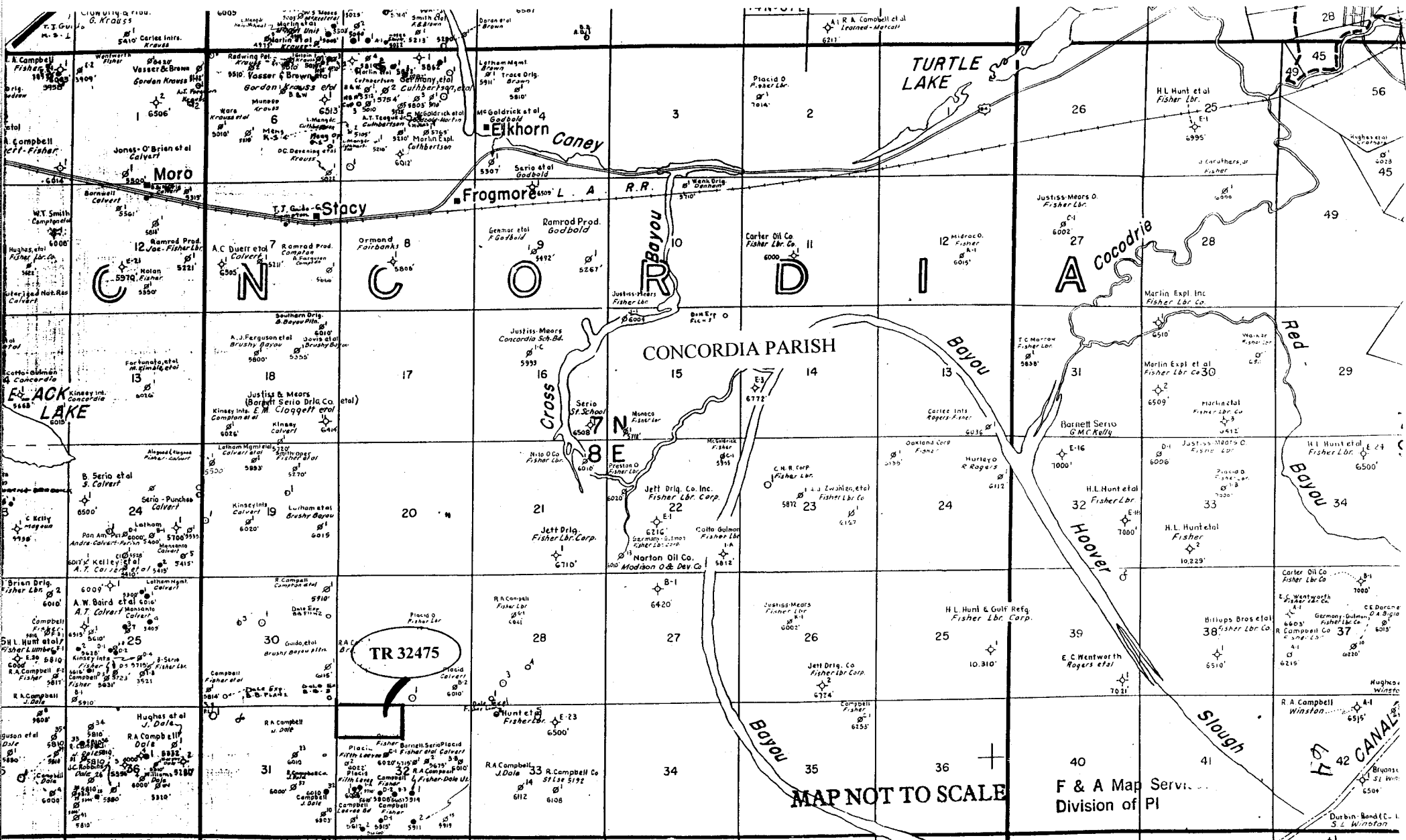
TR 32474
40 + ACS.
APR., 2000

BIENVILLE PARISH
T 16 N - R 7 W

OFFICIAL COPY
OFFICE OF MINERAL RESOURCES
DEPT. OF NATURAL RESOURCES
DO NOT REMOVE

2000 0 2000 Feet

NOT TO BE USED WITH A PORTION BID
FOR INFORMATIONAL PURPOSES ONLY!

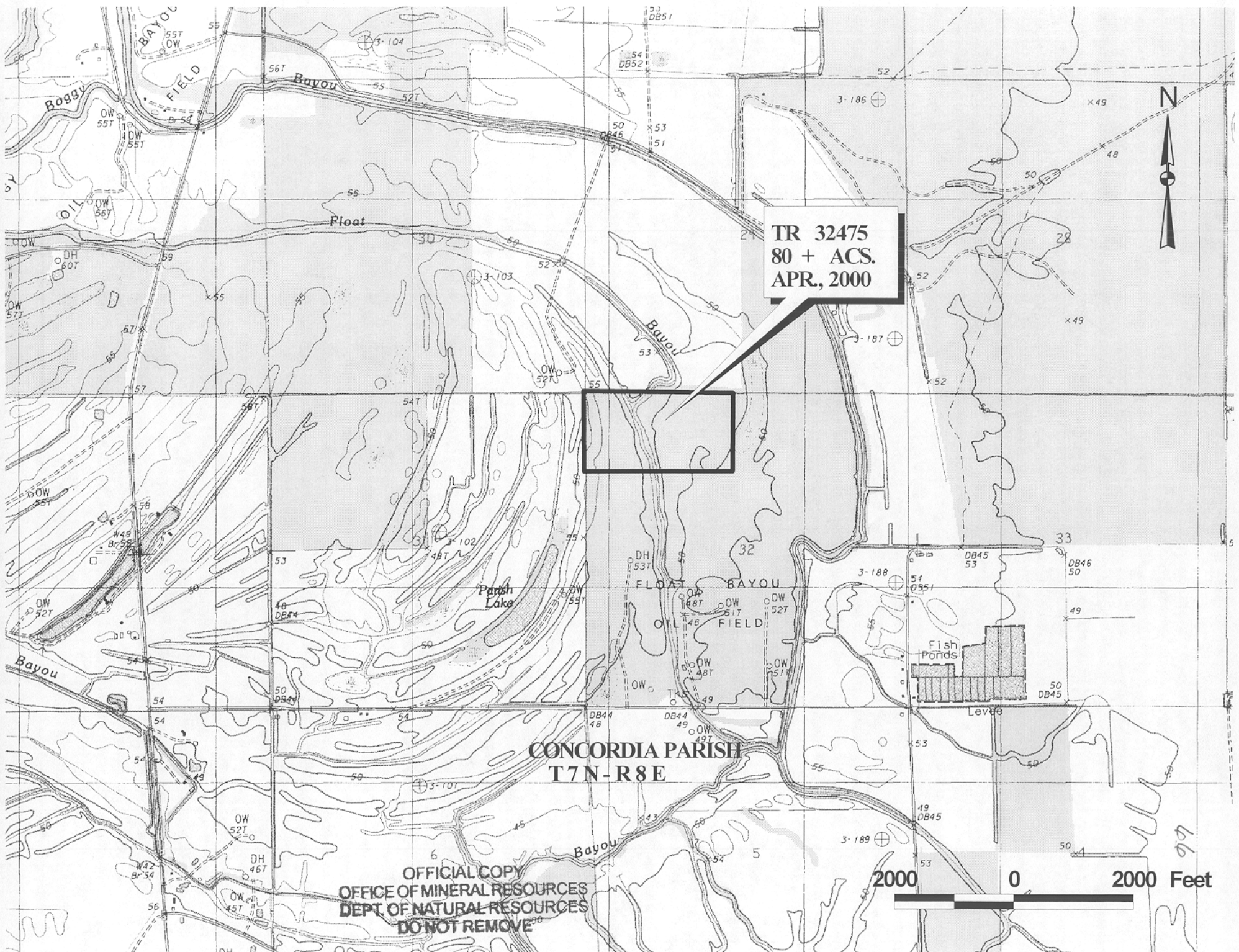


TRACT 32475 - STATE AGENCY - Concordia Parish, Louisiana

A certain tract of land belonging to and not under mineral lease from the Board of Commissioners for the Fifth Louisiana Levee District, on April 12, 2000, being more fully described as follows: North one-half of Northwest Quarter, Section 32, Township 7 North, Range 8 East, Concordia Parish, Louisiana, excluding beds and bottoms of all navigable waters, containing approximately **80 acres**, as shown outlined in red on a plat on file in the Office of Mineral Resources, Department of Natural Resources.

Applicant: Brookwater Energy, Inc. to Agency and by Resolution from the Board of Commissioners for the Fifth Louisiana Levee District authorizing the Mineral Board to act in its behalf.

Bidder	Cash Payment	Price / Acre	Rental	Oil	Gas	Other



TR 32475
80 + ACS.
APR, 2000

CONCORDIA PARISH
T7N-R8E

OFFICIAL COPY
OFFICE OF MINERAL RESOURCES
DEPT. OF NATURAL RESOURCES
DO NOT REMOVE

2000 0 2000 Feet