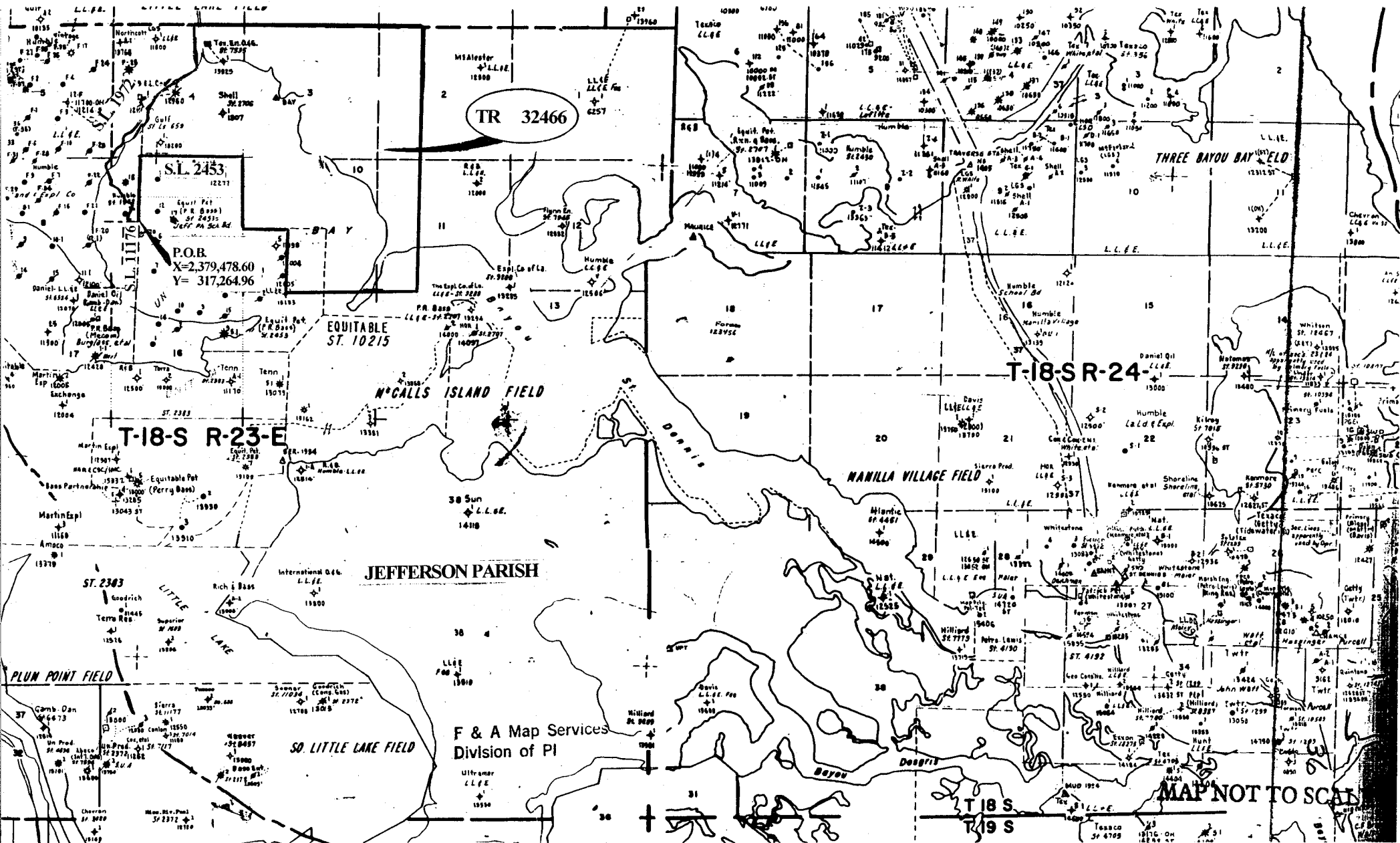


NOT TO BE USED WITH A PORTION BID
FOR INFORMATIONAL PURPOSES ONLY!



TRACT 32466 - Jefferson Parish, Louisiana

All of the lands now or formerly constituting the beds and bottoms of all water bodies of every nature and description and all islands and other lands formed by accretion or reliction, except tax lands, owned by and not under mineral lease from the State of Louisiana on April 12, 2000, situated in Jefferson Parish, Louisiana, within the following described boundaries: Beginning at the Northeast corner of State Lease No. 11176 on the West line of State Lease No. 2453, as amended, having Coordinates of X = 2,379,478.60 and Y = 317,264.96; thence South 88 degrees 58 minutes 36 seconds West 468.85 feet along the Northern boundary of said State Lease No. 11176 to a point on the Eastern boundary of State Lease No. 1972, as amended, having Coordinates of X = 2,379,009.82 and Y = 317,256.59; thence along the Eastern boundary of said State Lease No. 1972 the following courses: North 14 degrees 59 minutes 49 seconds West 89.35 feet, North 69 degrees 05 minutes 36 seconds East 131.99 feet, North 16 degrees 41 minutes 57 seconds West 129.46 feet, North 57 degrees 23 minutes 59 seconds East 20.42 feet, North 37 degrees 52 minutes 30 seconds East 57.01 feet, North 32 degrees 28 minutes 16 seconds East 65.19 feet, North 18 degrees 26 minutes 06 seconds East 63.25 feet, North 11 degrees 18 minutes 36 seconds East 76.49 feet, North 60.00 feet, North 10 degrees 37 minutes 58 seconds West 81.30 feet, North 70 degrees 32 minutes 40 seconds West 264.50 feet, North 16 degrees 42 minutes 16 seconds West 315.20 feet, North 76 degrees 46 minutes 51 seconds West 185.41 feet, North 22 degrees 11 minutes 03 seconds West 197.31 feet, North 75 degrees 35 minutes 03 seconds West 194.01 feet, North 13 degrees 55 minutes 15 seconds East 12.05 feet, North 09 degrees 05 minutes 25 seconds East 126.59 feet, North 135.00 feet, North 10 degrees 47 minutes 03 seconds West 106.89 feet, North 17 degrees 31 minutes 32 seconds West 99.62 feet, North 28 degrees 57 minutes 04 seconds West 268.56 feet; thence North 34 degrees 09 minutes 35 seconds West 135.19 feet to the intersection with the West shoreline of Turtle Bay; thence Northerly along the West shoreline of Turtle Bay to the intersection with the South boundary of the E4 RA SU A, created by the Department of Conservation Order No. 604-E; thence Southeasterly and Northeasterly with the boundary of said E4 RA SU A to a point; thence North to the intersection with the West shoreline of Turtle Bay; thence Northerly along the West shoreline of Turtle Bay to a point having a Coordinate of X = 2,381,320.00; thence North approximately 1,470 feet to a point having Coordinates of X = 2,381,320.00 and Y = 325,080.52; thence North 88 degrees 32 minutes 25 seconds East 8,926.42 feet to a point having Coordinates of X = 2,390,243.52 and Y = 325,307.89; thence South 01 degrees 15 minutes 18 seconds East 10,504.16 feet to a point having Coordinates of X = 2,390,473.60 and Y = 314,806.24; thence South 88 degrees 01 minutes 00 seconds West 5,166.20 feet to a point on the Eastern boundary of said State Lease No. 2453 having Coordinates of X = 2,385,310.49 and Y = 314,627.44; thence along the Eastern boundary of said State Lease No. 2453 North 2,462.74 feet to a point having Coordinates of X = 2,385,310.49 and Y = 317,090.19; thence West 1,761.72 feet along the boundary of said State Lease No. 2453 to a point having Coordinates of X = 2,383,548.77 and Y = 317,090.19; thence along the Eastern boundary of said State Lease No. 2453 North 02 degrees 22 minutes 40 seconds West 1,361.29 feet to a point having Coordinates of X = 2,383,492.30 and Y = 318,450.31; thence North 02 degrees 22 minutes 35 seconds West 1,526.18 feet to a point on the North line of said State Lease No. 2453 having Coordinates of X = 2,383,429.01 and Y = 319,975.18; thence along the North line of said State Lease No. 2453 South 88 degrees 58 minutes 50 seconds West 3,951.04 feet to a point on the West line of said State Lease No. 2453 having Coordinates of X = 2,379,478.60 and Y = 319,904.88; thence along the West line of said State Lease No. 2453 South 2,639.92 feet to the point of

beginning, **LESS AND EXCEPT** any portion of State Lease No. 11176, State Lease No. 1972, as amended, State Lease No. 2453, as amended, and E4 RA SU A Order No. 604-E that may lie within the above described tract, containing approximately **1,138 acres**, as shown outlined in red on a plat on file in the Office of Mineral Resources, Department of Natural Resources. All bearings, distances and coordinates are based on Louisiana Coordinate System of 1927 (South Zone).

NOTE: The above tract is located in or near an oyster restricted area and all operations in such area must be conducted in strict conformity with the stipulations and/or regulations of the Louisiana Department of Wildlife and Fisheries.

NOTE: The State of Louisiana does hereby reserve, and this lease shall be subject to, the imprescriptible right of surface use in the nature of a servitude in favor of the Department of Natural Resources, including its Offices and Commissions, for the sole purpose of implementing, constructing, servicing and maintaining approved coastal zone management and/or restoration projects. Utilization of any and all rights derived under this lease by the mineral lessee, its agents, successors or assigns, shall not interfere with nor hinder the reasonable surface use by the Department of Natural Resources, its Offices or Commissions, as hereinabove reserved.

Applicant: The Louisiana Land & Exploration Co.

Bidder	Cash Payment	Price / Acre	Rental	Oil	Gas	Other



T17S - R23E

T18S - R23E

TR 32466
1,138 + ACS.
APR, 2000

S.L. 1972

S.L. 2453

TURTLE BAY

TURTLE BAY

S.L. 11176

P.O.B.
X=2,379,478.60
Y= 317,264.96

JEFFERSON PARISH

OFFICIAL COPY
OFFICE OF MINERAL RESOURCES
DEPT. OF NATURAL RESOURCES
DO NOT REMOVE

