

3 LAFOURCHE PARISH
T 21 S - R 22 E



TR 32463
176 + ACS.
APR., 2000

OFFICIAL COPY
OFFICE OF MINERAL RESOURCES
DEPT. OF NATURAL RESOURCES
DO NOT REMOVE

P.O.B.
X= 2,351,700.00
Y= 212,600.00



TRACT 32464 - Lafourche Parish, Louisiana

All of the lands now or formerly constituting the beds and bottoms of all water bodies of every nature and description and all islands and other lands formed by accretion or reliction, except tax lands, owned by and not under mineral lease from the State of Louisiana on April 12, 2000, situated in Lafourche Parish, Louisiana, within the following described boundaries: Beginning at a point having Coordinates of X = 2,351,700.00 and Y = 212,600.00; thence South 12,000.00 feet to a point having Coordinates of X = 2,351,700.00 and Y = 200,600.00; thence West 15,000.00 feet to a point having Coordinates of X = 2,336,700.00 and Y = 200,600.00; thence North 12,000.00 feet to a point having Coordinates of X = 2,336,700.00 and Y = 212,600.00; thence East 15,000.00 feet to the point of beginning, **LESS AND EXCEPT** State Lease No. 13604, as amended, which lies entirely within the above described tract, containing approximately 2,309 acres, as shown outlined in red on a plat on file in the Office of Mineral Resources, Department of Natural Resources. All bearings, distances and coordinates are based on Louisiana Coordinate System of 1927 (South Zone).

NOTE: The above tract is located in or near an oyster restricted area and all operations in such area must be conducted in strict conformity with the stipulations and/or regulations of the Louisiana Department of Wildlife and Fisheries.

NOTE: The State of Louisiana does hereby reserve, and this lease shall be subject to, the imprescriptible right of surface use in the nature of a servitude in favor of the Department of Natural Resources, including its Offices and Commissions, for the sole purpose of implementing, constructing, servicing and maintaining approved coastal zone management and/or restoration projects. Utilization of any and all rights derived under this lease by the mineral lessee, its agents, successors or assigns, shall not interfere with nor hinder the reasonable surface use by the Department of Natural Resources, its Offices or Commissions, as hereinabove reserved.

Applicant: R.A. Ransonet

Bidder	Cash Payment	Price / Acre	Rental	Oil	Gas	Other

TR 32464
2,309 + ACS.
APR., 2000

P.O.B.
X= 2,351,700.00
Y= 212,600.00

S.L. 13604

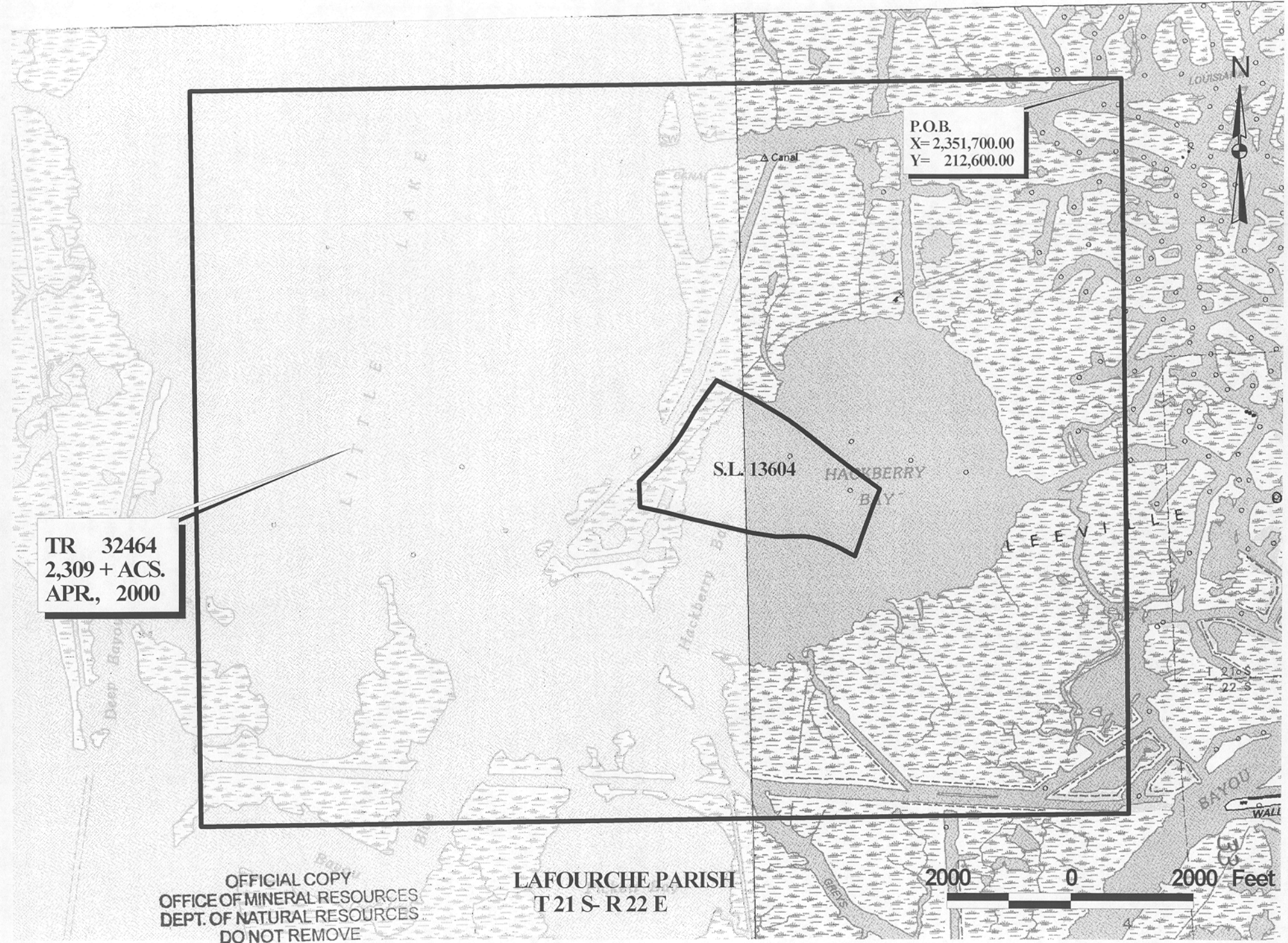
HACKBERRY
BAY

LEFENTH
LIFE

OFFICIAL COPY
OFFICE OF MINERAL RESOURCES
DEPT. OF NATURAL RESOURCES
DO NOT REMOVE

LAFORCHE PARISH
T 21 S - R 22 E

2000 0 2000 Feet



TRACT 32465 - Lafourche Parish, Louisiana

All of the lands now or formerly constituting the beds and bottoms of all water bodies of every nature and description and all islands and other lands formed by accretion or reliction, except tax lands, owned by and not under mineral lease from the State of Louisiana on April 12, 2000, situated in Lafourche Parish, Louisiana, within the following described boundaries: Beginning at a point having Coordinates of X = 2,351,700.00 and Y = 212,600.00; thence East 10,000.00 feet to a point having Coordinates of X = 2,361,700.00 and Y = 212,600.00; thence South 10,000.00 feet to a point having Coordinates of X = 2,361,700.00 and Y = 202,600.00; thence West 10,000.00 feet to a point having Coordinates of X = 2,351,700.00 and Y = 202,600.00; thence North 10,000.00 feet to the point of beginning, containing approximately **114 acres**, as shown outlined in red on a plat on file in the Office of Mineral Resources, Department of Natural Resources. All bearings, distances and coordinates are based on Louisiana Coordinate System of 1927 (South Zone).

NOTE: The above tract is located in or near an oyster restricted area and all operations in such area must be conducted in strict conformity with the stipulations and/or regulations of the Louisiana Department of Wildlife and Fisheries.

NOTE: The State of Louisiana does hereby reserve, and this lease shall be subject to, the imprescriptible right of surface use in the nature of a servitude in favor of the Department of Natural Resources, including its Offices and Commissions, for the sole purpose of implementing, constructing, servicing and maintaining approved coastal zone management and/or restoration projects. Utilization of any and all rights derived under this lease by the mineral lessee, its agents, successors or assigns, shall not interfere with nor hinder the reasonable surface use by the Department of Natural Resources, its Offices or Commissions, as hereinabove reserved.

Applicant: R.A. Ransonet

Bidder	Cash Payment	Price / Acre	Rental	Oil	Gas	Other



P.O.B.
X= 2,351,700.00
Y= 212,600.00

TR 32465
114 + ACS.
APR., 2000



T21S - R22E

LAFORCHE PARISH

T22S - R22E

OFFICIAL COPY
OFFICE OF MINERAL RESOURCES
DEPT. OF NATURAL RESOURCES
DO NOT REMOVE

