

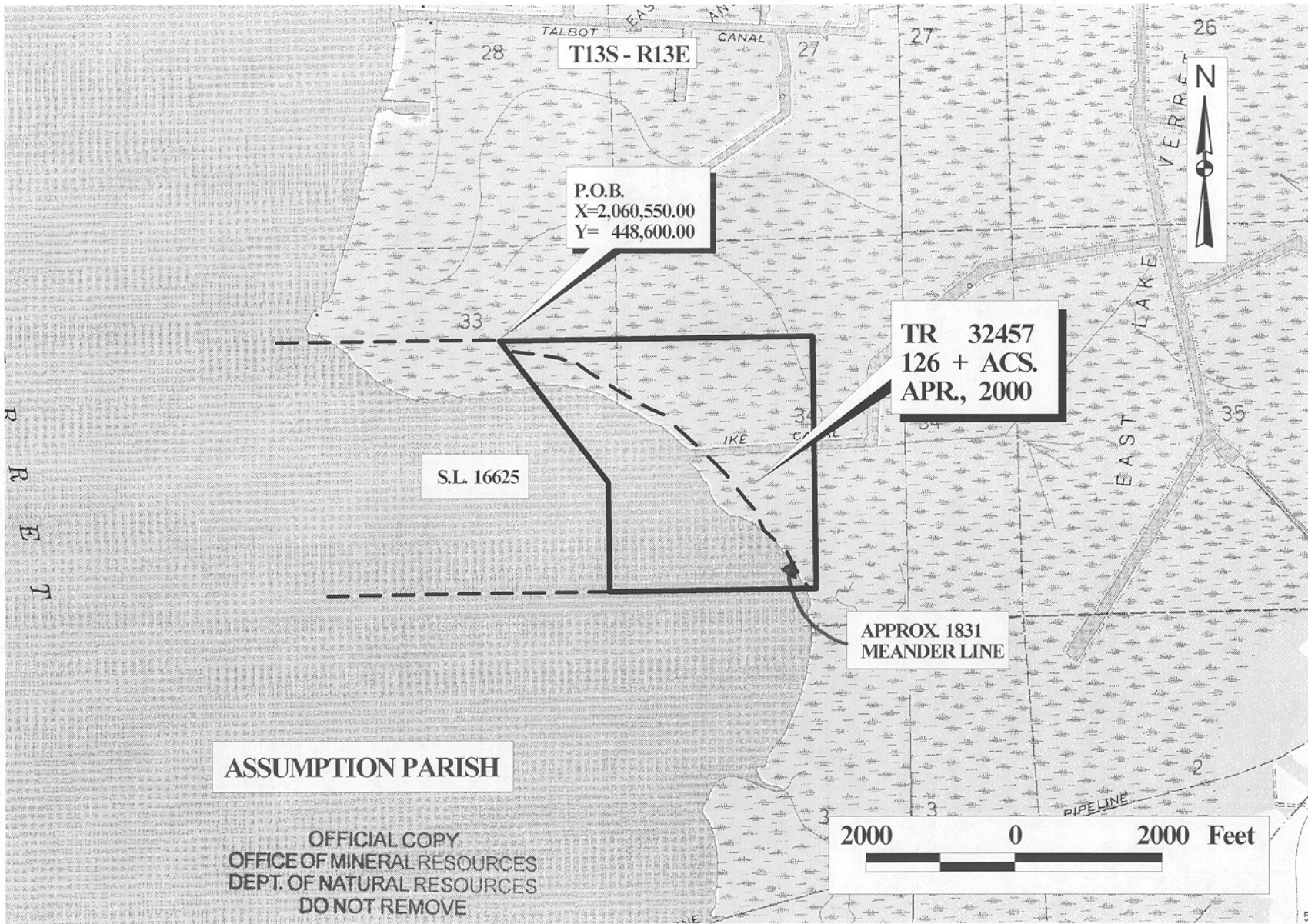
TRACT 32457 - Assumption Parish, Louisiana

All of the lands now or formerly constituting the beds and bottoms of all water bodies of every nature and description and all islands and other lands formed by accretion or reliction, except tax lands, owned by and not under mineral lease from the State of Louisiana on April 12, 2000, situated in Assumption Parish, Louisiana, within the following described boundaries: Beginning at the Northeast corner of State Lease No. 16625 having Coordinates of X = 2,060,550.00 and Y = 448,600.00; thence East 4,230.00 feet to a point having Coordinates of X = 2,064,780.00 and Y = 448,600.00; thence South 3,440.00 feet to a point having Coordinates of X = 2,064,780.00 and Y = 445,160.00; thence West 2,780.00 feet to the Southeast corner of said State Lease No. 16625 having Coordinates of X = 2,062,000.00 and Y = 445,160.00; thence West 2,780.00 feet to the Southeast corner of said State Lease No. 16625 having Coordinates of X = 2,062,000.00 and Y = 445,160.00; thence along the East boundary of said State Lease No. 16625 the following courses: North 1,490.00 feet and North 36 degrees 38 minutes 03 seconds West 2,430.02 feet to the point of beginning, containing approximately 126 acres, as shown outlined in red on a plat on file in the Office of Mineral Resources, Department of Natural Resources. All bearings, distances and coordinates are based on Louisiana Coordinate System of 1927 (South Zone).

NOTE: The State of Louisiana does hereby reserve, and this lease shall be subject to, the imprescriptible right of surface use in the nature of a servitude in favor of the Department of Natural Resources, including its Offices and Commissions, for the sole purpose of implementing, constructing, servicing and maintaining approved coastal zone management and/or restoration projects. Utilization of any and all rights derived under this lease by the mineral lessee, its agents, successors or assigns, shall not interfere with nor hinder the reasonable surface use by the Department of Natural Resources, its Offices or Commissions, as hereinabove reserved.

Tract Advertised by the State Mineral Board

Bidder	Cash Payment	Price / Acre	Rental	Oil	Gas	Other



T13S - R13E

P.O.B.
X=2,060,550.00
Y= 448,600.00

TR 32457
126 + ACS.
APR., 2000

S.L. 16625

APPROX. 1831
MEANDER LINE

ASSUMPTION PARISH

OFFICIAL COPY
OFFICE OF MINERAL RESOURCES
DEPT. OF NATURAL RESOURCES
DO NOT REMOVE

2000 0 2000 Feet

TRACT 32458 - Assumption Parish, Louisiana

All of the lands now or formerly constituting the beds and bottoms of all water bodies of every nature and description and all islands and other lands formed by accretion or reliction, except tax lands, owned by and not under mineral lease from the State of Louisiana on April 12, 2000, situated in Assumption Parish, Louisiana, within the following described boundaries: Beginning at a point having Coordinates of X = 2,045,800.00 and Y = 445,160.00; thence East 10,300.00 feet to the Northwest corner of State Lease No. 16626 having Coordinates of X = 2,056,100.00 and Y = 445,160.00; thence along the boundaries of said State Lease No. 16626 the following courses: South 32 degrees 14 minutes 43 seconds West 3,795.36 feet, South 500.00 feet, East 4,000.00 feet and North 47 degrees 33 minutes 50 seconds East 4,742.36 feet to a corner having Coordinates of X = 2,061,575.00 and Y = 444,650.00; thence South 6,665.00 feet to a point having Coordinates of X = 2,061,575.00 and Y = 437,985.00; thence West 15,775.00 feet to a point having Coordinates of X = 2,045,800.00 and Y = 437,985.00; thence North 7,175.00 feet to the point of beginning, **LESS AND EXCEPT** all that portion of State Lease No. 346, as amended, that may lie within the above described tract, containing approximately **1,996 acres**, as shown outlined in red on a plat on file in the Office of Mineral Resources, Department of Natural Resources. All bearings, distances and coordinates are based on Louisiana Coordinate System of 1927 (South Zone).

NOTE: The State of Louisiana does hereby reserve, and this lease shall be subject to, the imprescriptible right of surface use in the nature of a servitude in favor of the Department of Natural Resources, including its Offices and Commissions, for the sole purpose of implementing, constructing, servicing and maintaining approved coastal zone management and/or restoration projects. Utilization of any and all rights derived under this lease by the mineral lessee, its agents, successors or assigns, shall not interfere with nor hinder the reasonable surface use by the Department of Natural Resources, its Offices or Commissions, as hereinabove reserved.

Tract Advertised by the State Mineral Board

Bidder	Cash Payment	Price / Acre	Rental	Oil	Gas	Other

E
R
R
E
T



T13S - R12E

T14S - R12E

T13S - R13E

T14S - R13E

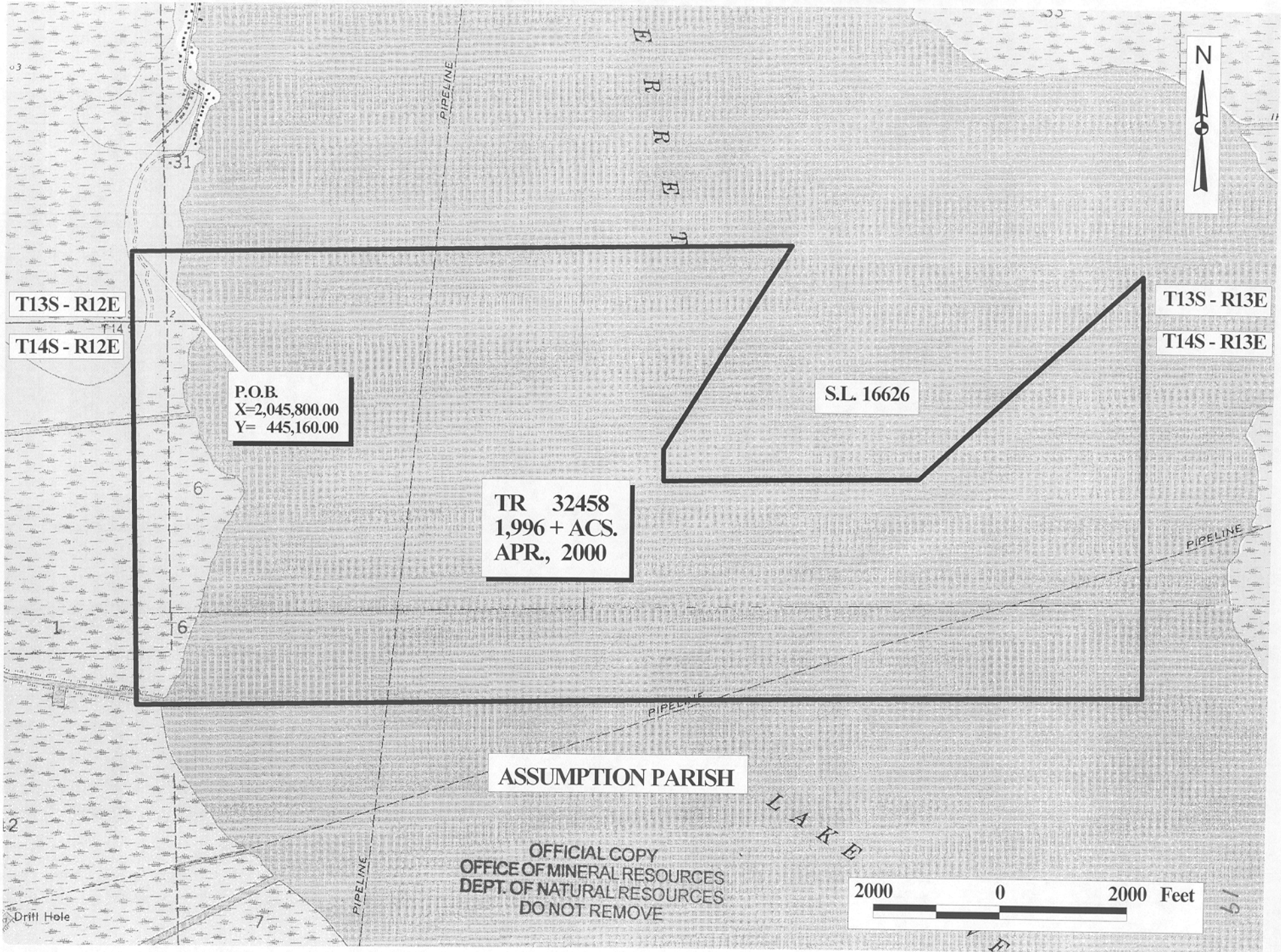
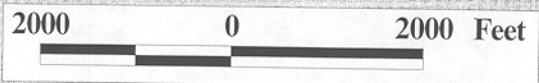
P.O.B.
X=2,045,800.00
Y= 445,160.00

S.L. 16626

TR 32458
1,996 + ACS.
APR., 2000

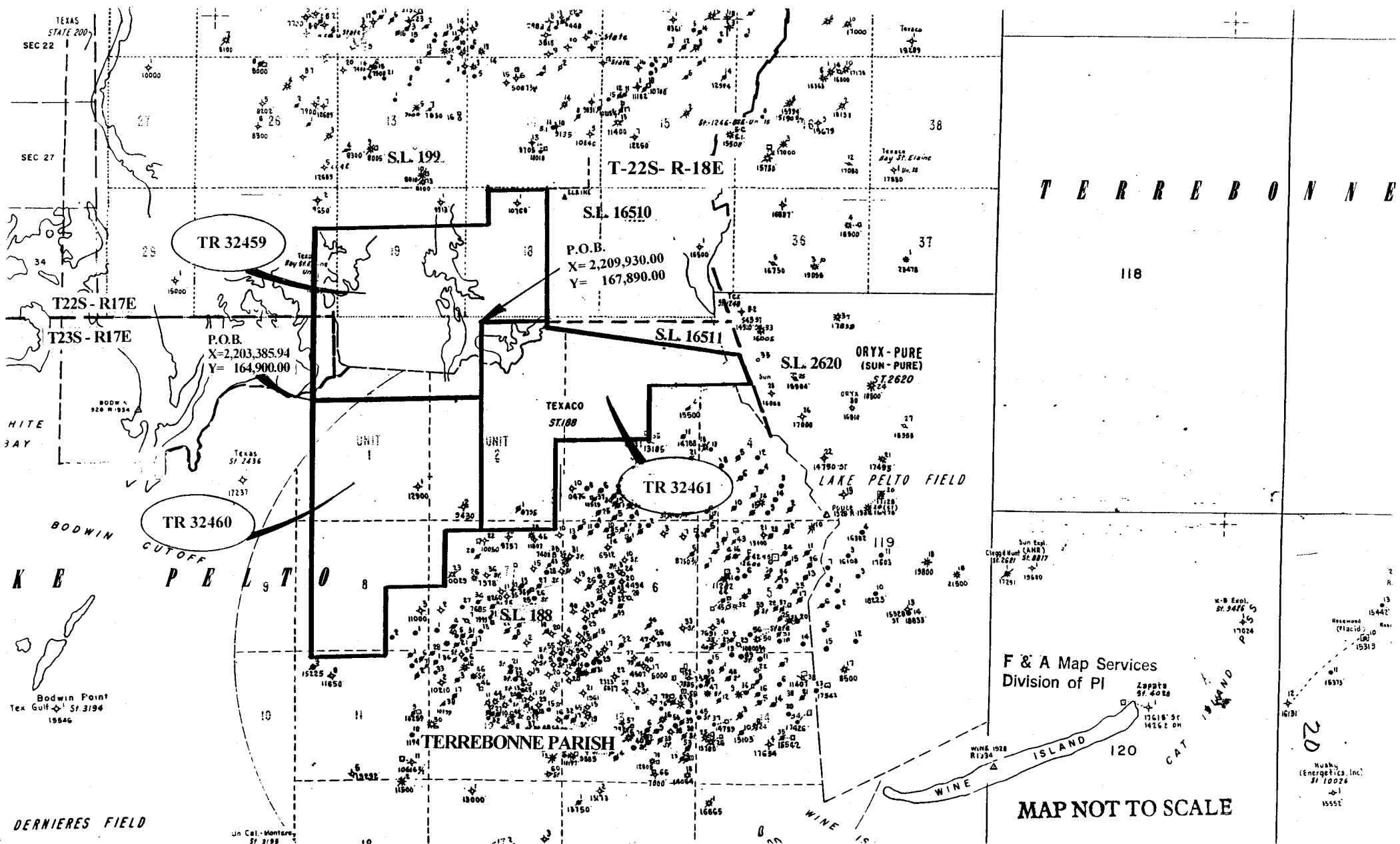
ASSUMPTION PARISH

OFFICIAL COPY
OFFICE OF MINERAL RESOURCES
DEPT. OF NATURAL RESOURCES
DO NOT REMOVE



61

NOT TO BE USED WITH A PORTION BID
FOR INFORMATIONAL PURPOSES ONLY!



T E R R E B O N N E

118

F & A Map Services
Division of PI

MAP NOT TO SCALE

20

Mushy
(Energetics, Inc.)
#1 10026
#1 15552