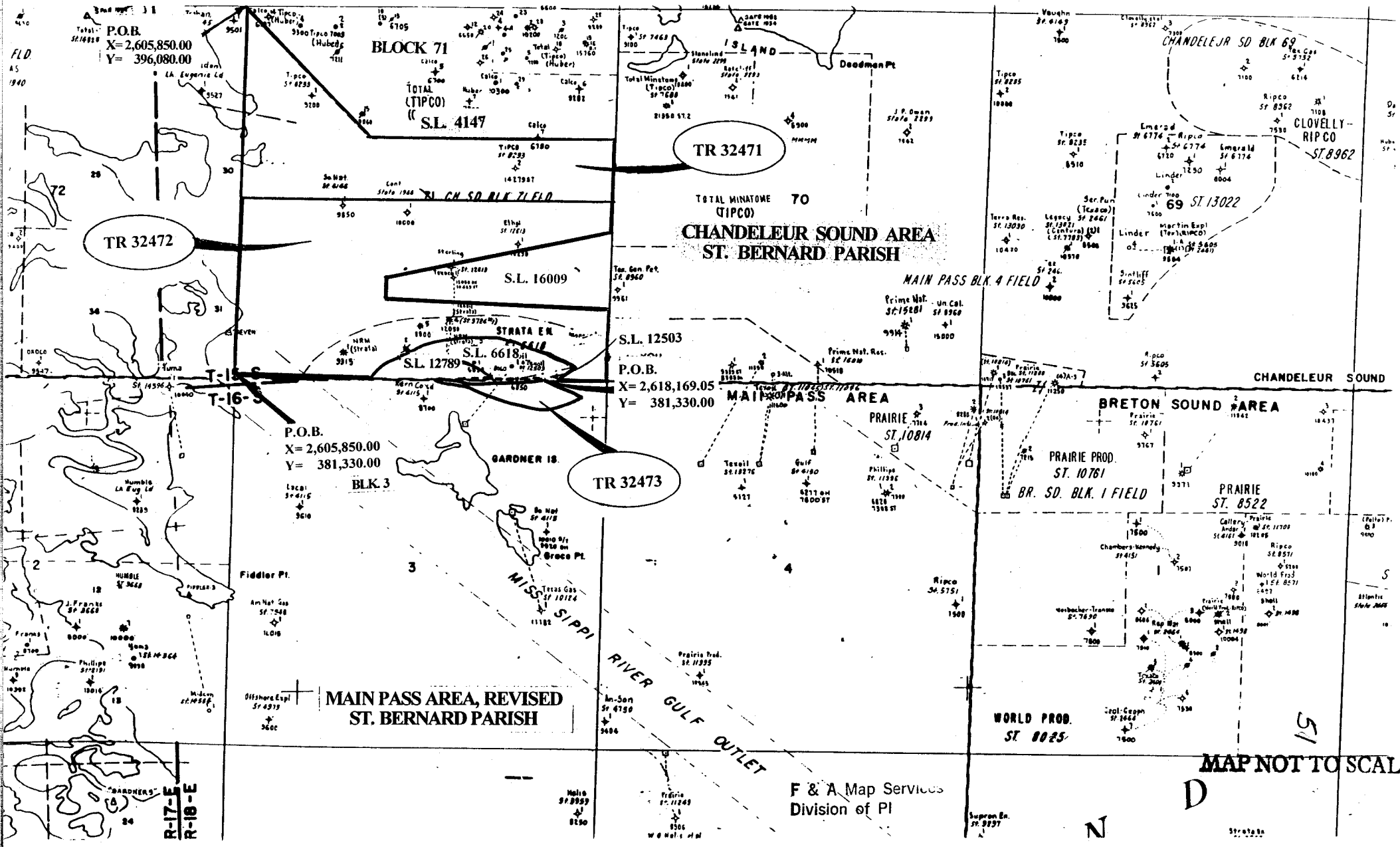


NOT TO BE USED WITH A PORTION BID
FOR INFORMATIONAL PURPOSES ONLY!



F & A Map Services
Division of PI

MAP NOT TO SCALE

D

N

51

FLD
AS
1940

72

34

2

18

24

R-17-E
R-18-E

Da
St

Hubs
St

(T) 101
St 3
400

Atlantic
State 2005

St. Bernard
Parish

TRACT 32471 - PORTION OF BLOCK 71, CHANDELEUR SOUND AREA, St. Bernard Parish, Louisiana

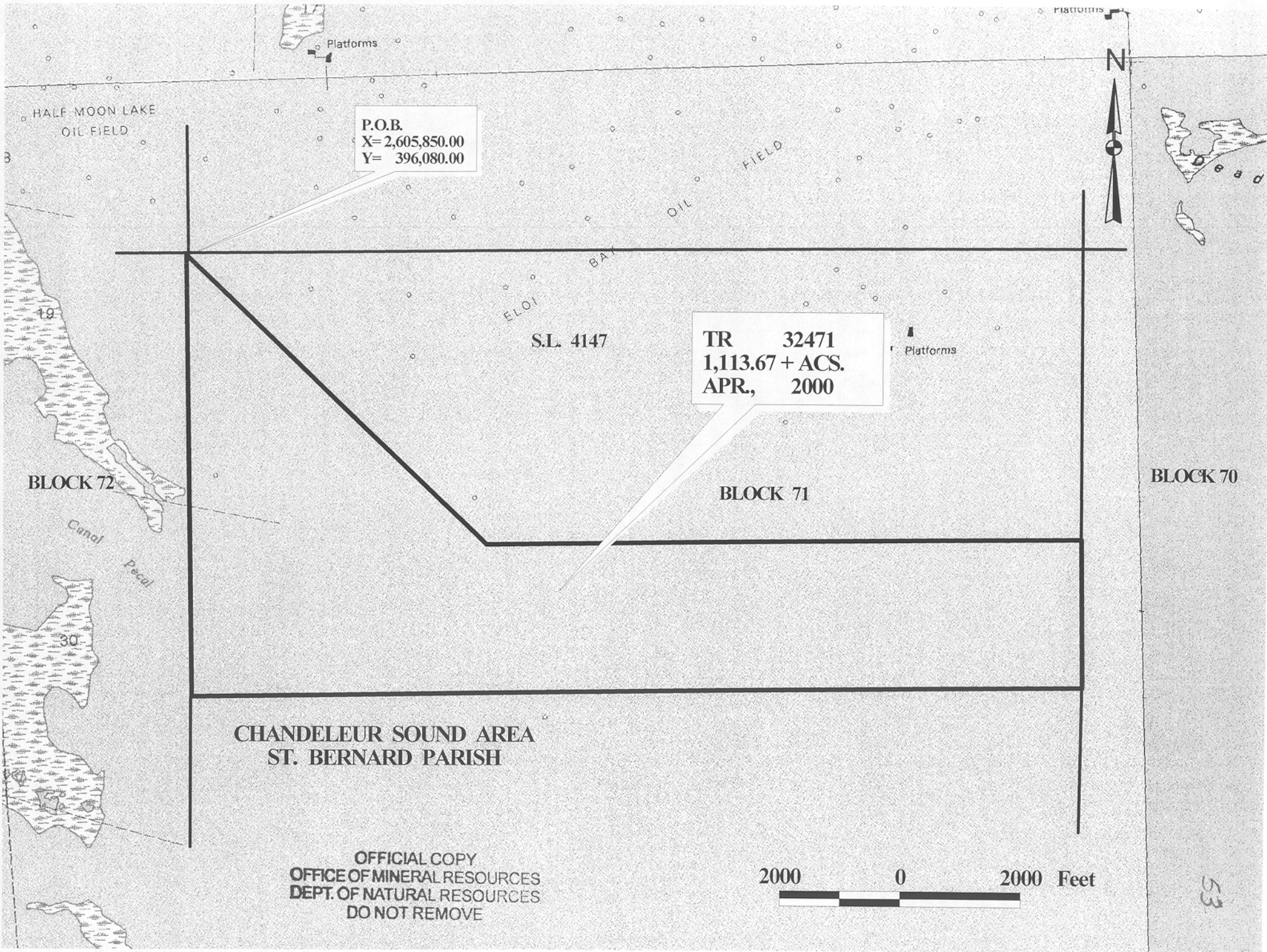
All of the lands now or formerly constituting the beds and bottoms of all water bodies of every nature and description and all islands and other lands formed by accretion or reliction, except tax lands, belonging to the State of Louisiana and not under mineral lease on April 12, 2000, situated in St. Bernard Parish, Louisiana, and more particularly described as follows: Beginning at the Northwest corner of Block 71, Chandeleur Sound Area, and the Northwest corner of State Lease No. 4147, having Coordinates of X = 2,605,850.00 and Y = 396,080.00; thence South 45 degrees 00 minutes 00 seconds East 6,929.65 feet to the Southwest corner of said State Lease No. 4147; thence East 9,850.00 feet to the Southeast corner of said State Lease No. 4147 and the East line of said Block 71 having Coordinates of X = 2,620,600.00 and Y = 391,180.00; thence South 2,475.00 feet along the East line of said Block 71; thence West 14,750.00 feet to a point on the West line of said Block 71 having Coordinates of X = 2,605,850.00 and Y = 388,705.00; thence North 7,375.00 feet to the point of beginning, containing approximately 1,113.67 acres, as shown outlined in red on a plat on file in the Office of Mineral Resources, Department of Natural Resources. All bearings, distances and coordinates are based on Louisiana Coordinate System of 1927 (South Zone).

NOTE: The above tract is located in an oyster restricted area and all operations in such area must be conducted in strict conformity with the stipulations and/or regulations of the Louisiana Department of Wildlife and Fisheries.

NOTE: The State of Louisiana does hereby reserve, and this lease shall be subject to, the imprescriptible right of surface use in the nature of a servitude in favor of the Department of Natural Resources, including its Offices and Commissions, for the sole purpose of implementing, constructing, servicing and maintaining approved coastal zone management and/or restoration projects. Utilization of any and all rights derived under this lease by the mineral lessee, its agents, successors or assigns, shall not interfere with nor hinder the reasonable surface use by the Department of Natural Resources, its Offices or Commissions, as hereinabove reserved.

Applicant: Cypress Energy Corporation

Bidder	Cash Payment	Price / Acre	Rental	Oil	Gas	Other



P.O.B.
X= 2,605,850.00
Y= 396,080.00

S.L. 4147

TR 32471
1,113.67 + ACS.
APR., 2000

BLOCK 72

BLOCK 71

BLOCK 70

CHANDELEUR SOUND AREA
ST. BERNARD PARISH

OFFICIAL COPY
OFFICE OF MINERAL RESOURCES
DEPT. OF NATURAL RESOURCES
DO NOT REMOVE

2000 0 2000 Feet

TRACT 32472 - PORTION OF BLOCK 71, CHANDELEUR SOUND AREA, St. Bernard Parish, Louisiana

All of the lands now or formerly constituting the beds and bottoms of all water bodies of every nature and description and all islands and other lands formed by accretion or reliction, except tax lands, belonging to the State of Louisiana and not under mineral lease on April 12, 2000, situated in St. Bernard Parish, Louisiana, and more particularly described as follows: Beginning at the Southwest corner of Block 71, Chandeleur Sound Area, having Coordinates of X = 2,605,850.00 and Y = 381,330.00; thence North 7,375.00 feet along the West line of said Block 71; thence East 14,750.00 feet to a point on the East line of said Block 71 having Coordinates of X = 2,620,600.00 and Y = 388,705.00; thence South 1,275.00 feet to a point thence the following courses: South 77 degrees 15 minutes 57 seconds West 9,073.18 feet; South 900.00 feet and South 87 degrees 24 minutes 44 seconds East 8,859.04 feet to a point having Coordinates of X = 2,620,600.00 and Y = 384,130.00; thence South 2,800.00 feet to the Southeast corner of said Block 71; thence West 2,430.97 feet to a point on State Lease No. 12503 having Coordinates of X = 2,618,169.03 and Y = 381,330.00; thence along said State Lease No. 12503 and State Lease No. 6618 the following courses: Northwesterly, Northeasterly, Northwesterly, Westerly and Southwesterly to the South line of said Block 71 having Coordinates of X = 2,611,084.51 and Y = 381,330.00; thence West 5,234.51 feet to the point of beginning, containing approximately 1,850 acres, as shown outlined in red on a plat on file in the Office of Mineral Resources, Department of Natural Resources. All bearings, distances and coordinates are based on Louisiana Coordinate System of 1927 (South Zone).

NOTE: It appears according to our records that a portion of this tract is located within the restrictive safety fairway area as set out by the Corps of Engineers, U.S. Army.

NOTE: The above tract is located in an oyster restricted area and all operations in such area must be conducted in strict conformity with the stipulations and/or regulations of the Louisiana Department of Wildlife and Fisheries.

NOTE: The State of Louisiana does hereby reserve, and this lease shall be subject to, the imprescriptible right of surface use in the nature of a servitude in favor of the Department of Natural Resources, including its Offices and Commissions, for the sole purpose of implementing, constructing, servicing and maintaining approved coastal zone management and/or restoration projects. Utilization of any and all rights derived under this lease by the mineral lessee, its agents, successors or assigns, shall not interfere with nor hinder the reasonable surface use by the Department of Natural Resources, its Offices or Commissions, as hereinabove reserved.

Applicant: Cypress Energy Corporation

Bidder	Cash Payment	Price / Acre	Rental	Oil	Gas	Other