

**TRACT 45289 - Assumption and St. Martin Parishes, Louisiana**

All of the lands now or formerly constituting the beds and bottoms of all water bodies of every nature and description as to which title is vested in the State of Louisiana, together with all islands arising therein and other lands formed by accretion or by reliction, where allowed by law, excepting tax adjudicated lands, and not presently under mineral lease on March 11, 2020, situated in Assumption and St. Martin Parishes, Louisiana, and more particularly described as follows: Beginning at a point having Coordinates of X = 2,051,651.89 and Y = 433,724.35; thence East 15,840.00 feet to a point having Coordinates of X = 2,067,491.89 and Y = 433,724.35; thence South 10,560.00 feet to a point having Coordinates of X = 2,067,491.89 and Y = 423,164.35; thence West 15,840.00 feet to a point having Coordinates of X = 2,051,651.89 and Y = 423,164.35; thence North 10,560.00 feet to the point of beginning, **LESS AND EXCEPT** any right, title, and interest in lands owned by and not under lease from the State of Louisiana, on behalf of the St. Martin and Assumption Parish School Boards, situated in Section 16, Township 14 South, Range 13 East, St. Martin and Assumption Parishes, Louisiana, (This lease includes only waterbottoms claimed and owned by the state and specifically excludes any land which the state may claim or own and to which the mineral rights are vested in the state), containing approximately **2,219 acres**, all as more particularly outlined on a plat on file in the Office of Mineral Resources, Department of Natural Resources. All bearings, distances and coordinates are based on Louisiana Coordinate System of 1927, (North or South Zone), where applicable.

NOTE: The above description of the Tract nominated for lease has been provided and corrected, where required, exclusively by the nomination party. Any mineral lease selected from this Tract and awarded by the Louisiana State Mineral and Energy Board shall be without warranty of any kind, either express, implied, or statutory, including, but not limited to, the implied warranties of merchantability and fitness for a particular purpose. Should the mineral lease awarded by the Louisiana State Mineral and Energy Board be subsequently modified, cancelled or abrogated due to the existence of conflicting leases, operating agreements, private claims or other future obligations or conditions which may affect all or any portion of the leased Tract, it shall not relieve the Lessee of the obligation to pay any bonus due thereon to the Louisiana State Mineral and Energy Board, nor shall the Louisiana State Mineral and Energy Board be obligated to refund any consideration paid by the Lessor prior to such modification, cancellation, or abrogation, including, but not limited to, bonuses, rentals and royalties.

NOTE: The State of Louisiana does hereby reserve, and this lease shall be subject to, the imprescriptible right of surface use in the nature of a servitude in favor of the Department of Natural Resources, including its Offices and Commissions, for the sole purpose of implementing, constructing, servicing and maintaining approved coastal zone management and/or restoration projects. Utilization of any and all rights derived under this lease by the mineral lessee, its agents, successors or assigns, shall not

interfere with nor hinder the reasonable surface use by the Department of Natural Resources, its Offices or Commissions, as herein above reserved.

Applicant: LOUISIANA BAYOU OIL & GAS CO.

Bidder	Cash Payment	Price/Acre	Rental	Oil	Gas	Other

Legend

- 20030023
- Counties



0 2,500 Feet

ASSUMPTION

LAKE VERRET

P.O.B.

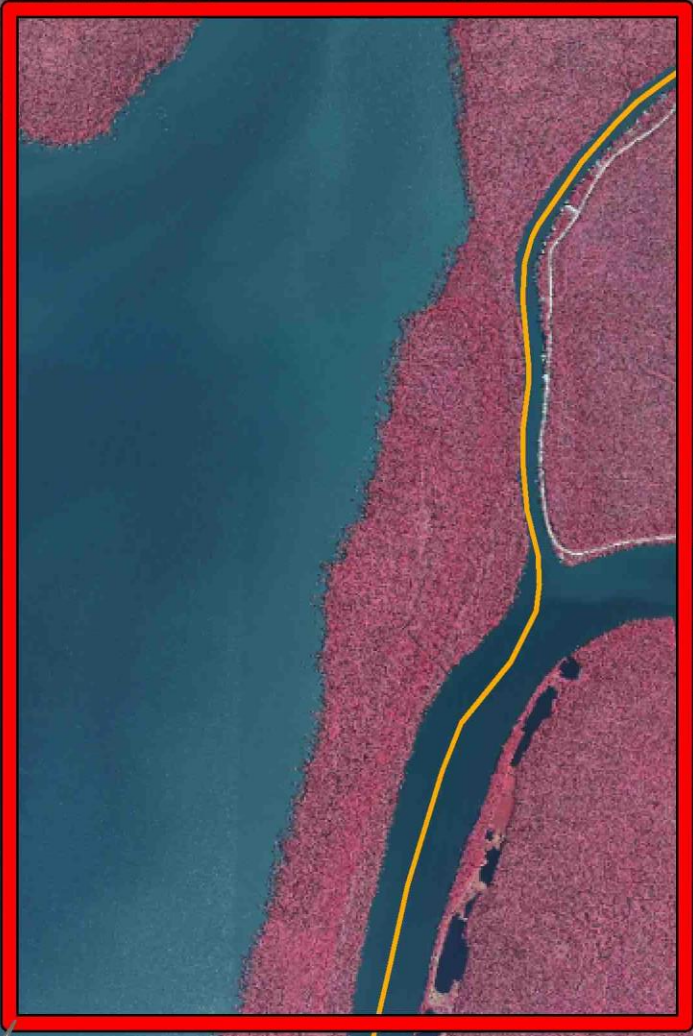
BELLE RIVER

T14S - R13E

BAYOU LONG

ST MARTIN

BAYOU MAGAZILLE



**TRACT 45290 - Assumption and St. Martin Parishes, Louisiana**

All of the lands now or formerly constituting the beds and bottoms of all water bodies of every nature and description as to which title is vested in the State of Louisiana, together with all islands arising therein and other lands formed by accretion or by reliction, where allowed by law, excepting tax adjudicated lands, and not presently under mineral lease on March 11, 2020, situated in Assumption and St. Martin Parishes, Louisiana, and more particularly described as follows: Beginning at a point having Coordinates of X = 2,067,491.89 and Y = 433,724.35; thence East 15,840.00 feet to a point having Coordinates of X = 2,083,331.89 and Y = 433,724.35; thence South 15,840.00 feet to a point having Coordinates of X = 2,083,331.89 and Y = 417,884.35; thence West 15,840.00 feet to a point having Coordinates of X = 2,067,491.89 and Y = 417,884.35; thence North 15,840.00 feet to the point of beginning, containing approximately **2,201 acres**, all as more particularly outlined on a plat on file in the Office of Mineral Resources, Department of Natural Resources. All bearings, distances and coordinates are based on Louisiana Coordinate System of 1927, (North or South Zone), where applicable.

NOTE: The above description of the Tract nominated for lease has been provided and corrected, where required, exclusively by the nomination party. Any mineral lease selected from this Tract and awarded by the Louisiana State Mineral and Energy Board shall be without warranty of any kind, either express, implied, or statutory, including, but not limited to, the implied warranties of merchantability and fitness for a particular purpose. Should the mineral lease awarded by the Louisiana State Mineral and Energy Board be subsequently modified, cancelled or abrogated due to the existence of conflicting leases, operating agreements, private claims or other future obligations or conditions which may affect all or any portion of the leased Tract, it shall not relieve the Lessee of the obligation to pay any bonus due thereon to the Louisiana State Mineral and Energy Board, nor shall the Louisiana State Mineral and Energy Board be obligated to refund any consideration paid by the Lessor prior to such modification, cancellation, or abrogation, including, but not limited to, bonuses, rentals and royalties.

NOTE: The State of Louisiana does hereby reserve, and this lease shall be subject to, the imprescriptible right of surface use in the nature of a servitude in favor of the Department of Natural Resources, including its Offices and Commissions, for the sole purpose of implementing, constructing, servicing and maintaining approved coastal zone management and/or restoration projects. Utilization of any and all rights derived under this lease by the mineral lessee, its agents, successors or assigns, shall not interfere with nor hinder the reasonable surface use by the Department of Natural Resources, its Offices or Commissions, as herein above reserved.

Applicant: LOUISIANA BAYOU OIL & GAS CO.

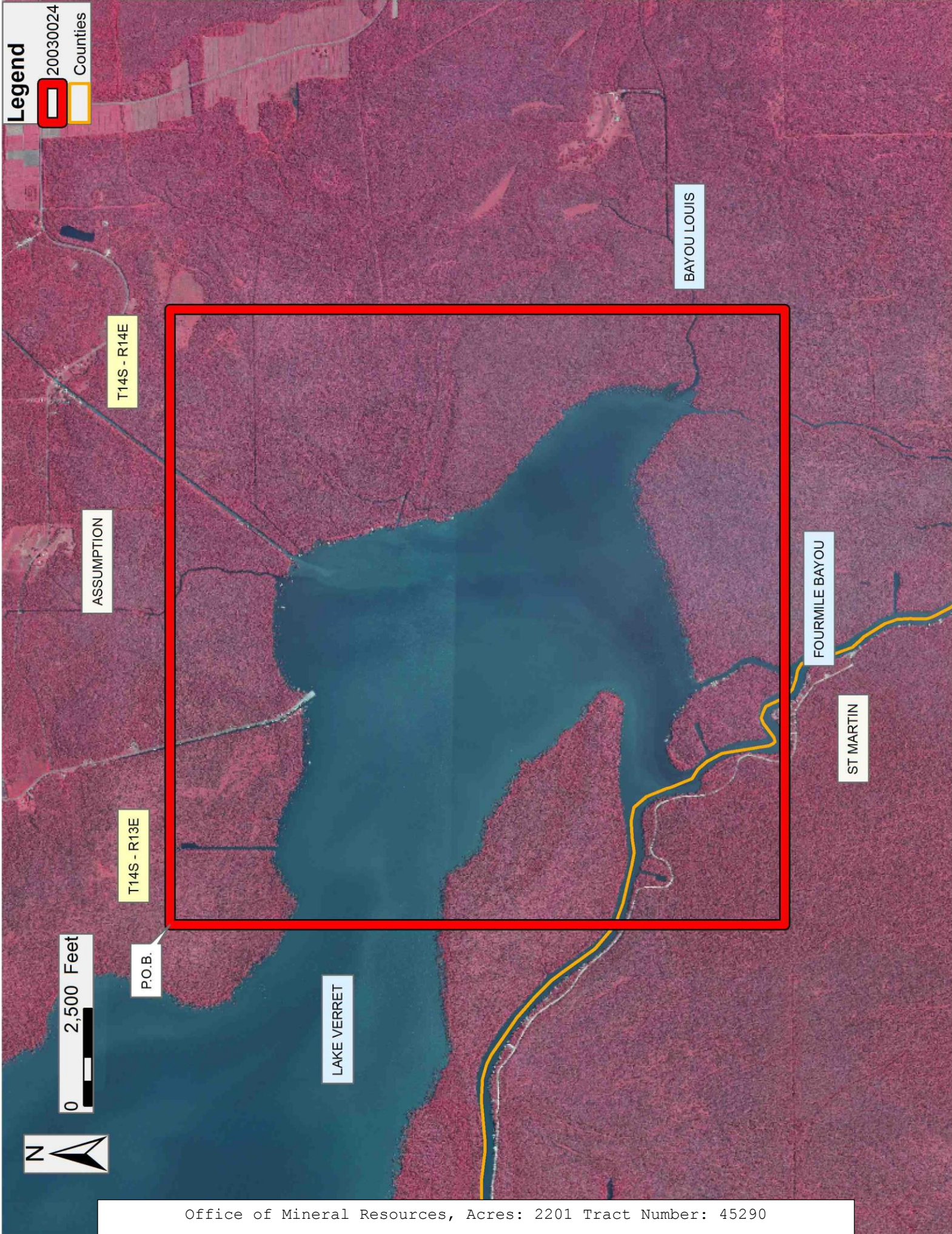
Bidder	Cash Payment	Price/Acre	Rental	Oil	Gas	Other

Legend



20030024

Counties



0 2,500 Feet

P.O.B.

T14S - R13E

T14S - R14E

ASSUMPTION

BAYOU LOUIS

FOURMILE BAYOU

ST MARTIN

LAKE VERRET

**TRACT 45291 - Iberia Parish, Louisiana**

All of the lands now or formerly constituting the beds and bottoms of all water bodies of every nature and description as to which title is vested in the State of Louisiana, together with all islands arising therein and other lands formed by accretion or by reliction, where allowed by law, excepting tax adjudicated lands, and not presently under mineral lease on March 11, 2020, situated in Iberia Parish, Louisiana, and more particularly described as follows: Beginning at a point on the Southern boundary of State Lease No. 21890, having Coordinates of X = 1,868,767.65 and Y = 343,789.00; thence East 1,478.35 feet along said Southern boundary of said State Lease No. 21890 to its Southeast corner, having Coordinates of X = 1,870,246.00 and Y = 343,789.00; thence East 3,864.00 feet to a point on the West boundary of State Lease No. 21891, having Coordinates of X = 1,874,110.00 and Y = 343,789.00; thence along the boundary of said State Lease No. 21891 the following courses and distances: South 2,140.00 feet to a point having Coordinates of X = 1,874,110.00 and Y = 341,649.00 and East 1,139.21 feet to its Southeast corner, also being the Southwest corner of State Lease No. 21892, having Coordinates of X = 1,875,249.21 and Y = 341,649.00; thence South 2,267.90 feet to a point having Coordinates of X = 1,875,249.21 and Y = 339,381.10; thence West 6,481.56 feet to a point having Coordinates of X = 1,868,767.65 and Y = 339,381.10; thence North 4,407.90 feet to the point of beginning, containing approximately **559.91 acres**, all as more particularly outlined on a plat on file in the Office of Mineral Resources, Department of Natural Resources. All bearings, distances and coordinates are based on Louisiana Coordinate System of 1927, (North or South Zone), where applicable.

NOTE: The above description of the Tract nominated for lease has been provided and corrected, where required, exclusively by the nomination party. Any mineral lease selected from this Tract and awarded by the Louisiana State Mineral and Energy Board shall be without warranty of any kind, either express, implied, or statutory, including, but not limited to, the implied warranties of merchantability and fitness for a particular purpose. Should the mineral lease awarded by the Louisiana State Mineral and Energy Board be subsequently modified, cancelled or abrogated due to the existence of conflicting leases, operating agreements, private claims or other future obligations or conditions which may affect all or any portion of the leased Tract, it shall not relieve the Lessee of the obligation to pay any bonus due thereon to the Louisiana State Mineral and Energy Board, nor shall the Louisiana State Mineral and Energy Board be obligated to refund any consideration paid by the Lessor prior to such modification, cancellation, or abrogation, including, but not limited to, bonuses, rentals and royalties.

NOTE: The State of Louisiana does hereby reserve, and this lease shall be subject to, the imprescriptible right of surface use in the nature of a servitude in favor of the Department of Natural Resources, including its Offices and Commissions, for the sole purpose of implementing, constructing, servicing and maintaining approved coastal zone management and/or restoration projects. Utilization of any and all rights derived under this lease by the mineral lessee, its agents, successors or assigns, shall not

interfere with nor hinder the reasonable surface use by the Department of Natural Resources, its Offices or Commissions, as herein above reserved.

NOTE: This tract is located in an area designated by the Louisiana Legislature or the Wildlife and Fisheries Commission as a Public Oyster Seed Ground, Reservation, or area of Calcasieu or Sabine Lake. Proposed projects occurring in these areas will be evaluated on a case by case basis by Louisiana Department of Wildlife & Fisheries. Modifications to proposed project features including, but not limited to, access routes, well sites, flowlines, and appurtenant structures maybe required by the Louisiana Department of Wildlife and Fisheries. In addition, compensatory mitigation will be required to offset unavoidable habitat impacts.

NOTE: All or a portion of this Tract lies within one nautical mile of the boundary of the Russell Sage or Marsh Island Wildlife Refuge and Game Preserve. Any activities connected with this lease conducted within this Tract which may pose potential environmental impacts to the said Wildlife Refuge and Game Preserve should be coordinated with the Louisiana Department of Wildlife and Fisheries.

Applicant: LOUISIANA BAYOU OIL & GAS CO.

Bidder	Cash Payment	Price/Acre	Rental	Oil	Gas	Other





0 1,000 Feet

IBERIA

SL 21890

P.O.B.

SL 21891

SL 21892

VERMILION BAY

**Legend**

20030026

Active\_Leases



**TRACT 45292 - Iberia Parish, Louisiana**

All of the lands now or formerly constituting the beds and bottoms of all water bodies of every nature and description as to which title is vested in the State of Louisiana, together with all islands arising therein and other lands formed by accretion or by reliction, where allowed by law, excepting tax adjudicated lands, and not presently under mineral lease on March 11, 2020, situated in Iberia Parish, Louisiana, and more particularly described as follows: Beginning at a point on the Southern boundary of State Lease No. 21889, having Coordinates of X = 1,864,026.44 and Y = 343,789.00; thence East 2,022.77 feet along said Southern boundary of said State Lease No. 21889 to its Southeast corner, also being the Southwest corner of State Lease No. 21890, having Coordinates of X = 1,866,049.21 and Y = 343,789.00; thence East 2,718.44 feet along the Southern boundary of said State Lease No. 21890 to a point having Coordinates of X = 1,868,767.65 and Y = 343,789.00; thence South 4,407.90 feet to a point having Coordinates of X = 1,868,767.65 and Y = 339,381.10; thence West 4,741.21 feet to a point having Coordinates of X = 1,864,026.44 and Y = 339,381.10; thence North 4,407.90 feet to the point of beginning, containing approximately **479.77 acres**, all as more particularly outlined on a plat on file in the Office of Mineral Resources, Department of Natural Resources. All bearings, distances and coordinates are based on Louisiana Coordinate System of 1927, (North or South Zone), where applicable.

NOTE: The above description of the Tract nominated for lease has been provided and corrected, where required, exclusively by the nomination party. Any mineral lease selected from this Tract and awarded by the Louisiana State Mineral and Energy Board shall be without warranty of any kind, either express, implied, or statutory, including, but not limited to, the implied warranties of merchantability and fitness for a particular purpose. Should the mineral lease awarded by the Louisiana State Mineral and Energy Board be subsequently modified, cancelled or abrogated due to the existence of conflicting leases, operating agreements, private claims or other future obligations or conditions which may affect all or any portion of the leased Tract, it shall not relieve the Lessee of the obligation to pay any bonus due thereon to the Louisiana State Mineral and Energy Board, nor shall the Louisiana State Mineral and Energy Board be obligated to refund any consideration paid by the Lessor prior to such modification, cancellation, or abrogation, including, but not limited to, bonuses, rentals and royalties.

NOTE: The State of Louisiana does hereby reserve, and this lease shall be subject to, the imprescriptible right of surface use in the nature of a servitude in favor of the Department of Natural Resources, including its Offices and Commissions, for the sole purpose of implementing, constructing, servicing and maintaining approved coastal zone management and/or restoration projects. Utilization of any and all rights derived under this lease by the mineral lessee, its agents, successors or assigns, shall not interfere with nor hinder the reasonable surface use by the Department of Natural Resources, its Offices or Commissions, as herein above reserved.

NOTE: This tract is located in an area designated by the Louisiana Legislature or the Wildlife and Fisheries Commission as a Public Oyster Seed Ground, Reservation, or area of Calcasieu or Sabine Lake. Proposed projects occurring in these areas will be evaluated on a case by case basis by Louisiana Department of Wildlife & Fisheries. Modifications to proposed project features including, but not limited to, access routes, well sites, flowlines, and appurtenant structures maybe required by the Louisiana Department of Wildlife and Fisheries. In addition, compensatory mitigation will be required to offset unavoidable habitat impacts.

NOTE: All or a portion of this Tract lies within one nautical mile of the boundary of the Russell Sage or Marsh Island Wildlife Refuge and Game Preserve. Any activities connected with this lease conducted within this Tract which may pose potential environmental impacts to the said Wildlife Refuge and Game Preserve should be coordinated with the Louisiana Department of Wildlife and Fisheries.

Applicant: LOUISIANA BAYOU OIL & GAS CO.

Bidder	Cash Payment	Price/Acre	Rental	Oil	Gas	Other

**Legend**



20030025

Active\_Leases



0 1,000 Feet



P.O.B.

IBERIA

SL 21889

SL 21890

VERMILION BAY

**TRACT 45293 - Iberia Parish, Louisiana**

All of the lands now or formerly constituting the beds and bottoms of all water bodies of every nature and description as to which title is vested in the State of Louisiana, together with all islands arising therein and other lands formed by accretion or by reliction, where allowed by law, excepting tax adjudicated lands, and not presently under mineral lease on March 11, 2020, situated in Iberia Parish, Louisiana, and more particularly described as follows: Beginning at the Southeast corner of State Lease No. 21891, also being the Southwest corner of State Lease No. 21892, having Coordinates of X = 1,875,249.21 and Y = 341,649.00; thence East 3,715.79 feet along the Southern boundary of said State Lease No. 21892 to its Southeast corner, having Coordinates of X = 1,878,965.00 and Y = 341,649.00; thence South 2,874.59 feet to a point on the Northern boundary of State Lease No. 19139, having Coordinates of X = 1,878,965.00 and Y = 338,774.41; thence along the boundary of said State Lease No. 19139 the following courses and distances: North 89 degrees 45 minutes 53 seconds West 418.99 feet to a point having Coordinates of X = 1,878,546.01 and Y = 338,776.13 and South 00 degrees 13 minutes 52 seconds West 1,935.25 feet to a point on its West boundary, also being a Northeast corner of State Lease No. 1706, as amended, having Coordinates of X = 1,878,538.20 and Y = 336,840.90; thence North 89 degrees 45 minutes 58 seconds West 3,289.02 feet along the Northernmost Northern boundary of said State Lease No. 1706 to a point having Coordinates of X = 1,875,249.21 and Y = 336,854.33; thence North 4,794.67 feet to the point of beginning, containing approximately **390.86 acres**, all as more particularly outlined on a plat on file in the Office of Mineral Resources, Department of Natural Resources. All bearings, distances and coordinates are based on Louisiana Coordinate System of 1927, (North or South Zone), where applicable.

NOTE: The above description of the Tract nominated for lease has been provided and corrected, where required, exclusively by the nomination party. Any mineral lease selected from this Tract and awarded by the Louisiana State Mineral and Energy Board shall be without warranty of any kind, either express, implied, or statutory, including, but not limited to, the implied warranties of merchantability and fitness for a particular purpose. Should the mineral lease awarded by the Louisiana State Mineral and Energy Board be subsequently modified, cancelled or abrogated due to the existence of conflicting leases, operating agreements, private claims or other future obligations or conditions which may affect all or any portion of the leased Tract, it shall not relieve the Lessee of the obligation to pay any bonus due thereon to the Louisiana State Mineral and Energy Board, nor shall the Louisiana State Mineral and Energy Board be obligated to refund any consideration paid by the Lessor prior to such modification, cancellation, or abrogation, including, but not limited to, bonuses, rentals and royalties.

NOTE: The State of Louisiana does hereby reserve, and this lease shall be subject to, the imprescriptible right of surface use in the nature of a servitude in favor of the Department of Natural Resources, including its Offices and Commissions, for the sole purpose of implementing, constructing, servicing and maintaining approved coastal zone management and/or

restoration projects. Utilization of any and all rights derived under this lease by the mineral lessee, its agents, successors or assigns, shall not interfere with nor hinder the reasonable surface use by the Department of Natural Resources, its Offices or Commissions, as herein above reserved.

NOTE: This tract is located in an area designated by the Louisiana Legislature or the Wildlife and Fisheries Commission as a Public Oyster Seed Ground, Reservation, or area of Calcasieu or Sabine Lake. Proposed projects occurring in these areas will be evaluated on a case by case basis by Louisiana Department of Wildlife & Fisheries. Modifications to proposed project features including, but not limited to, access routes, well sites, flowlines, and appurtenant structures maybe required by the Louisiana Department of Wildlife and Fisheries. In addition, compensatory mitigation will be required to offset unavoidable habitat impacts.

NOTE: All or a portion of this Tract lies within one nautical mile of the boundary of the Russell Sage or Marsh Island Wildlife Refuge and Game Preserve. Any activities connected with this lease conducted within this Tract which may pose potential environmental impacts to the said Wildlife Refuge and Game Preserve should be coordinated with the Louisiana Department of Wildlife and Fisheries.

Applicant: LOUISIANA BAYOU OIL & GAS CO.

Bidder	Cash Payment	Price/Acre	Rental	Oil	Gas	Other



0 1,000 Feet

SL 21891

P.O.B.

VERMILION BAY

IBERIA

SL 21892

SL 19139

SL 1706

**Legend**



20030027

Active\_Leases

**TRACT 45294 - Iberia Parish, Louisiana**

All of the lands now or formerly constituting the beds and bottoms of all water bodies of every nature and description as to which title is vested in the State of Louisiana, together with all islands arising therein and other lands formed by accretion or by reliction, where allowed by law, excepting tax adjudicated lands, and not presently under mineral lease on March 11, 2020, situated in Iberia Parish, Louisiana, and more particularly described as follows: Beginning at the Southeast corner of State Lease No. 21892, having Coordinates of X = 1,878,965.00 and Y = 341,649.00; thence East 5,484.21 feet to a point having Coordinates of X = 1,884,449.21 and Y = 341,649.00; thence South 2,888.76 feet to the Northeast corner of State Lease No. 19139, having Coordinates of X = 1,884,449.21 and Y = 338,760.24; thence along the boundary of said State Lease No. 19139 the following courses and distances: West 2,037.23 feet to a point having Coordinates of X = 1,882,411.98 and Y = 338,760.24, and North 89 degrees 45 minutes 52 seconds West 3,447.01 feet to a point having Coordinates of X = 1,878,965.00 and Y = 338,774.41; thence North 2,874.59 feet to the point of beginning, containing approximately **363.13 acres**, all as more particularly outlined on a plat on file in the Office of Mineral Resources, Department of Natural Resources. All bearings, distances and coordinates are based on Louisiana Coordinate System of 1927, (North or South Zone), where applicable.

NOTE: The above description of the Tract nominated for lease has been provided and corrected, where required, exclusively by the nomination party. Any mineral lease selected from this Tract and awarded by the Louisiana State Mineral and Energy Board shall be without warranty of any kind, either express, implied, or statutory, including, but not limited to, the implied warranties of merchantability and fitness for a particular purpose. Should the mineral lease awarded by the Louisiana State Mineral and Energy Board be subsequently modified, cancelled or abrogated due to the existence of conflicting leases, operating agreements, private claims or other future obligations or conditions which may affect all or any portion of the leased Tract, it shall not relieve the Lessee of the obligation to pay any bonus due thereon to the Louisiana State Mineral and Energy Board, nor shall the Louisiana State Mineral and Energy Board be obligated to refund any consideration paid by the Lessor prior to such modification, cancellation, or abrogation, including, but not limited to, bonuses, rentals and royalties.

NOTE: The State of Louisiana does hereby reserve, and this lease shall be subject to, the imprescriptible right of surface use in the nature of a servitude in favor of the Department of Natural Resources, including its Offices and Commissions, for the sole purpose of implementing, constructing, servicing and maintaining approved coastal zone management and/or restoration projects. Utilization of any and all rights derived under this lease by the mineral lessee, its agents, successors or assigns, shall not interfere with nor hinder the reasonable surface use by the Department of Natural Resources, its Offices or Commissions, as herein above reserved.



NOTE: This tract is located in an area designated by the Louisiana Legislature or the Wildlife and Fisheries Commission as a Public Oyster Seed Ground, Reservation, or area of Calcasieu or Sabine Lake. Proposed projects occurring in these areas will be evaluated on a case by case basis by Louisiana Department of Wildlife & Fisheries. Modifications to proposed project features including, but not limited to, access routes, well sites, flowlines, and appurtenant structures maybe required by the Louisiana Department of Wildlife and Fisheries. In addition, compensatory mitigation will be required to offset unavoidable habitat impacts.

Applicant: LOUISIANA BAYOU OIL & GAS CO.

Bidder	Cash Payment	Price/Acre	Rental	Oil	Gas	Other

**Legend**

20030028

Active\_Leases



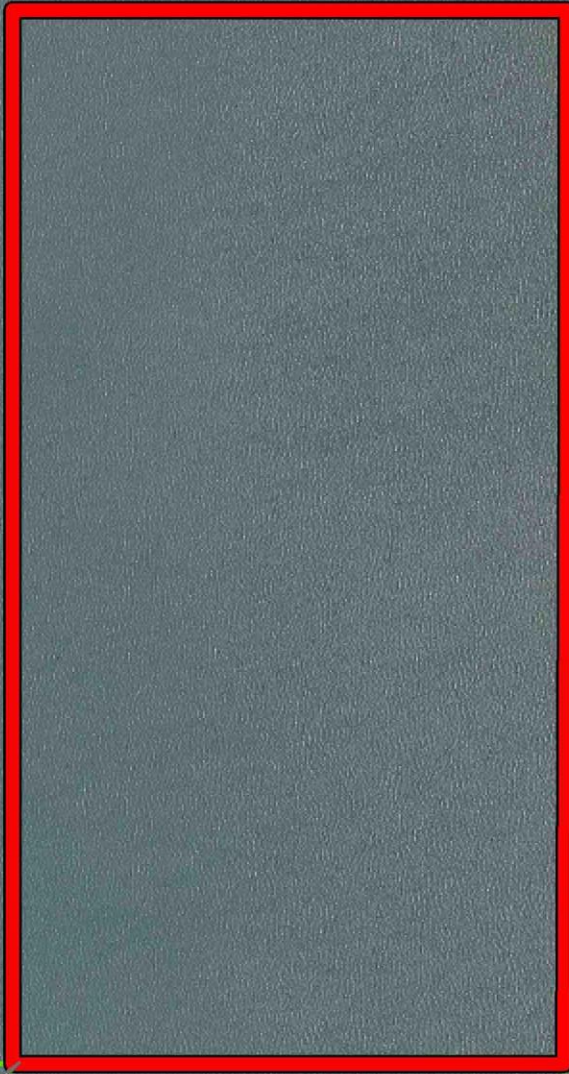
0 1,000 Feet

IBERIA

VERMILION BAY

SL 21892

P.O.B.



SL 19139

**TRACT 45295 - Iberia Parish, Louisiana**

All of the lands now or formerly constituting the beds and bottoms of all water bodies of every nature and description as to which title is vested in the State of Louisiana, together with all islands arising therein and other lands formed by accretion or by reliction, where allowed by law, excepting tax adjudicated lands, and not presently under mineral lease on March 11, 2020, situated in Iberia Parish, Louisiana, and more particularly described as follows: Beginning at a point having Coordinates of X = 1,864,026.44 and Y = 339,381.10; thence East 4,741.21 feet to a point having Coordinates of X = 1,868,767.65 and Y = 339,381.10; thence South 2,500.00 feet to the most Northerly Northwest corner of State Lease No. 1706, as amended, having Coordinates of X = 1,868,767.65 and Y = 336,881.10; thence West 4,741.21 feet to a point having Coordinates of X = 1,864,026.44 and Y = 336,881.10; thence North 2,500.00 feet to the point of beginning, containing approximately **272.11 acres**, all as more particularly outlined on a plat on file in the Office of Mineral Resources, Department of Natural Resources. All bearings, distances and coordinates are based on Louisiana Coordinate System of 1927, (North or South Zone), where applicable.

NOTE: The above description of the Tract nominated for lease has been provided and corrected, where required, exclusively by the nomination party. Any mineral lease selected from this Tract and awarded by the Louisiana State Mineral and Energy Board shall be without warranty of any kind, either express, implied, or statutory, including, but not limited to, the implied warranties of merchantability and fitness for a particular purpose. Should the mineral lease awarded by the Louisiana State Mineral and Energy Board be subsequently modified, cancelled or abrogated due to the existence of conflicting leases, operating agreements, private claims or other future obligations or conditions which may affect all or any portion of the leased Tract, it shall not relieve the Lessee of the obligation to pay any bonus due thereon to the Louisiana State Mineral and Energy Board, nor shall the Louisiana State Mineral and Energy Board be obligated to refund any consideration paid by the Lessor prior to such modification, cancellation, or abrogation, including, but not limited to, bonuses, rentals and royalties.

NOTE: The State of Louisiana does hereby reserve, and this lease shall be subject to, the imprescriptible right of surface use in the nature of a servitude in favor of the Department of Natural Resources, including its Offices and Commissions, for the sole purpose of implementing, constructing, servicing and maintaining approved coastal zone management and/or restoration projects. Utilization of any and all rights derived under this lease by the mineral lessee, its agents, successors or assigns, shall not interfere with nor hinder the reasonable surface use by the Department of Natural Resources, its Offices or Commissions, as herein above reserved.

NOTE: This tract is located in an area designated by the Louisiana Legislature or the Wildlife and Fisheries Commission as a Public Oyster Seed Ground, Reservation, or area of Calcasieu or Sabine Lake. Proposed projects occurring in these areas will be evaluated on a case by case basis by

Louisiana Department of Wildlife & Fisheries. Modifications to proposed project features including, but not limited to, access routes, well sites, flowlines, and appurtenant structures maybe required by the Louisiana Department of Wildlife and Fisheries. In addition, compensatory mitigation will be required to offset unavoidable habitat impacts.

NOTE: All or a portion of this Tract lies within one nautical mile of the boundary of the Russell Sage or Marsh Island Wildlife Refuge and Game Preserve. Any activities connected with this lease conducted within this Tract which may pose potential environmental impacts to the said Wildlife Refuge and Game Preserve should be coordinated with the Louisiana Department of Wildlife and Fisheries.

Applicant: LOUISIANA BAYOU OIL & GAS CO.

Bidder	Cash Payment	Price/Acre	Rental	Oil	Gas	Other

**Legend**



20030029

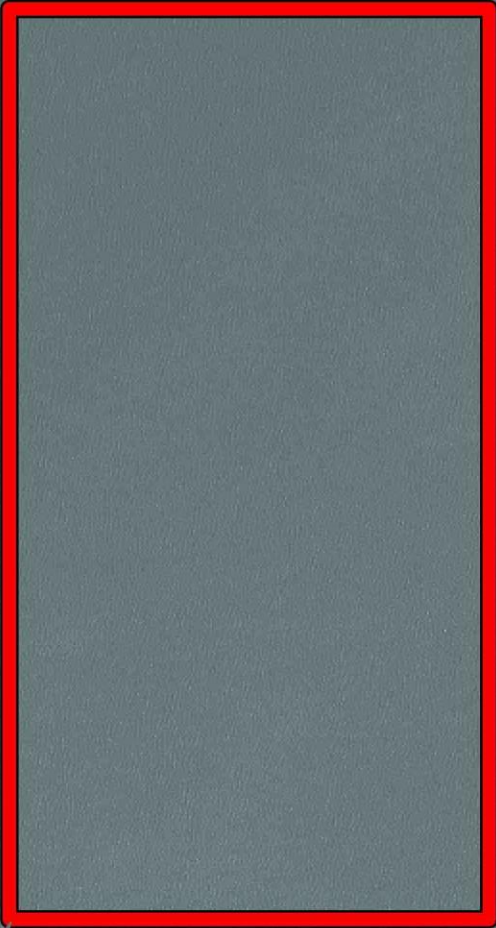
Active\_Leases

0 1,000 Feet



IBERIA

P.O.B.



SL 1706

VERMILION BAY

**TRACT 45296 - Iberia Parish, Louisiana**

All of the lands now or formerly constituting the beds and bottoms of all water bodies of every nature and description as to which title is vested in the State of Louisiana, together with all islands arising therein and other lands formed by accretion or by reliction, where allowed by law, excepting tax adjudicated lands, and not presently under mineral lease on March 11, 2020, situated in Iberia Parish, Louisiana, and more particularly described as follows: Beginning at a point having Coordinates of X = 1,868,767.65 and Y = 339,381.10; thence East 6,481.56 feet to a point having Coordinates of X = 1,875,249.21 and Y = 339,381.10; thence South 2,526.77 feet to a point on the most Northern boundary of State Lease No. 1706, as amended, having Coordinates of X = 1,875,249.21 and Y = 336,854.33; thence North 89 degrees 45 minutes 48 seconds West 6,481.62 feet along said Northern boundary of said State Lease No. 1706 to a point having Coordinates of X = 1,868,767.65 and Y = 336,881.10; thence North 2,500.00 feet to the point of beginning, containing approximately **373.98 acres**, all as more particularly outlined on a plat on file in the Office of Mineral Resources, Department of Natural Resources. All bearings, distances and coordinates are based on Louisiana Coordinate System of 1927, (North or South Zone), where applicable.

NOTE: The above description of the Tract nominated for lease has been provided and corrected, where required, exclusively by the nomination party. Any mineral lease selected from this Tract and awarded by the Louisiana State Mineral and Energy Board shall be without warranty of any kind, either express, implied, or statutory, including, but not limited to, the implied warranties of merchantability and fitness for a particular purpose. Should the mineral lease awarded by the Louisiana State Mineral and Energy Board be subsequently modified, cancelled or abrogated due to the existence of conflicting leases, operating agreements, private claims or other future obligations or conditions which may affect all or any portion of the leased Tract, it shall not relieve the Lessee of the obligation to pay any bonus due thereon to the Louisiana State Mineral and Energy Board, nor shall the Louisiana State Mineral and Energy Board be obligated to refund any consideration paid by the Lessor prior to such modification, cancellation, or abrogation, including, but not limited to, bonuses, rentals and royalties.

NOTE: The State of Louisiana does hereby reserve, and this lease shall be subject to, the imprescriptible right of surface use in the nature of a servitude in favor of the Department of Natural Resources, including its Offices and Commissions, for the sole purpose of implementing, constructing, servicing and maintaining approved coastal zone management and/or restoration projects. Utilization of any and all rights derived under this lease by the mineral lessee, its agents, successors or assigns, shall not interfere with nor hinder the reasonable surface use by the Department of Natural Resources, its Offices or Commissions, as herein above reserved.

NOTE: This tract is located in an area designated by the Louisiana Legislature or the Wildlife and Fisheries Commission as a Public Oyster Seed Ground, Reservation, or area of Calcasieu or Sabine Lake. Proposed projects

occurring in these areas will be evaluated on a case by case basis by Louisiana Department of Wildlife & Fisheries. Modifications to proposed project features including, but not limited to, access routes, well sites, flowlines, and appurtenant structures maybe required by the Louisiana Department of Wildlife and Fisheries. In addition, compensatory mitigation will be required to offset unavoidable habitat impacts.

NOTE: All or a portion of this Tract lies within one nautical mile of the boundary of the Russell Sage or Marsh Island Wildlife Refuge and Game Preserve. Any activities connected with this lease conducted within this Tract which may pose potential environmental impacts to the said Wildlife Refuge and Game Preserve should be coordinated with the Louisiana Department of Wildlife and Fisheries.

Applicant: LOUISIANA BAYOU OIL & GAS CO.

Bidder	Cash Payment	Price/Acre	Rental	Oil	Gas	Other

**Legend**



20030030

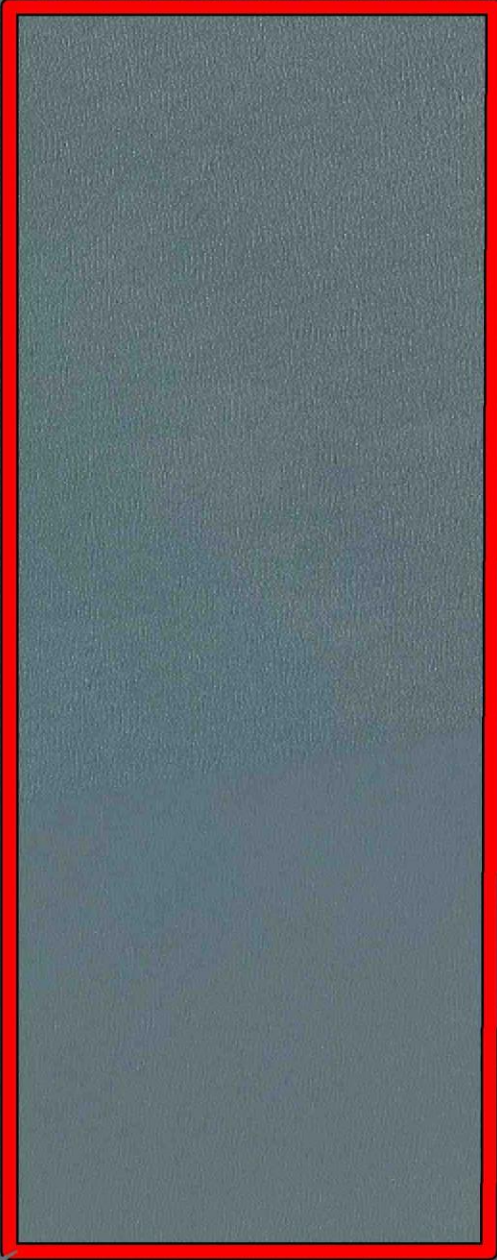
Active\_Leases

0 1,000 Feet



IBERIA

P.O.B.



SL 1706

VERMILION BAY



**TRACT 45297 - Iberia Parish, Louisiana**

All of the lands now or formerly constituting the beds and bottoms of all water bodies of every nature and description as to which title is vested in the State of Louisiana, together with all islands arising therein and other lands formed by accretion or by reliction, where allowed by law, excepting tax adjudicated lands, and not presently under mineral lease on March 11, 2020, situated in Iberia Parish, Louisiana, and more particularly described as follows: Beginning at a point having Coordinates of X = 1,859,397.69 and Y = 336,881.10; thence East 4,628.75 feet to a point having Coordinates of X = 1,864,026.44 and Y = 336,881.10; thence South 6,162.76 feet to a point on the boundary of State Lease No. 3498, as amended, having Coordinates of X = 1,864,026.44 and Y = 330,718.34; thence Southerly along the most Westerly boundary of said State Lease No. 3498 to a point on the Northern boundary of the Marsh Island Wildlife Refuge; thence along said boundary of said Marsh Island Wildlife Refuge the following courses: Westerly, Southerly, Westerly, and Northerly to the point of intersection with a North South line having a Coordinate of X = 1,859,397.69; thence North approximately 1,777 feet to the point of beginning, **LESS AND EXCEPT** all that portion, if any, of said State Lease No. 3498, as amended, and said Marsh Island Wildlife Refuge that may lie within the above described tract, containing approximately **808 acres**, all as more particularly outlined on a plat on file in the Office of Mineral Resources, Department of Natural Resources. All bearings, distances and coordinates are based on Louisiana Coordinate System of 1927, (North or South Zone), where applicable.

NOTE: The above description of the Tract nominated for lease has been provided and corrected, where required, exclusively by the nomination party. Any mineral lease selected from this Tract and awarded by the Louisiana State Mineral and Energy Board shall be without warranty of any kind, either express, implied, or statutory, including, but not limited to, the implied warranties of merchantability and fitness for a particular purpose. Should the mineral lease awarded by the Louisiana State Mineral and Energy Board be subsequently modified, cancelled or abrogated due to the existence of conflicting leases, operating agreements, private claims or other future obligations or conditions which may affect all or any portion of the leased Tract, it shall not relieve the Lessee of the obligation to pay any bonus due thereon to the Louisiana State Mineral and Energy Board, nor shall the Louisiana State Mineral and Energy Board be obligated to refund any consideration paid by the Lessor prior to such modification, cancellation, or abrogation, including, but not limited to, bonuses, rentals and royalties.

NOTE: The State of Louisiana does hereby reserve, and this lease shall be subject to, the imprescriptible right of surface use in the nature of a servitude in favor of the Department of Natural Resources, including its Offices and Commissions, for the sole purpose of implementing, constructing, servicing and maintaining approved coastal zone management and/or restoration projects. Utilization of any and all rights derived under this lease by the mineral lessee, its agents, successors or assigns, shall not

interfere with nor hinder the reasonable surface use by the Department of Natural Resources, its Offices or Commissions, as herein above reserved.

NOTE: This tract is located in an area designated by the Louisiana Legislature or the Wildlife and Fisheries Commission as a Public Oyster Seed Ground, Reservation, or area of Calcasieu or Sabine Lake. Proposed projects occurring in these areas will be evaluated on a case by case basis by Louisiana Department of Wildlife & Fisheries. Modifications to proposed project features including, but not limited to, access routes, well sites, flowlines, and appurtenant structures maybe required by the Louisiana Department of Wildlife and Fisheries. In addition, compensatory mitigation will be required to offset unavoidable habitat impacts.

NOTE: All or a portion of this Tract lies within one nautical mile of the boundary of the Russell Sage or Marsh Island Wildlife Refuge and Game Preserve. Any activities connected with this lease conducted within this Tract which may pose potential environmental impacts to the said Wildlife Refuge and Game Preserve should be coordinated with the Louisiana Department of Wildlife and Fisheries.

Applicant: LOUISIANA BAYOU OIL & GAS CO.

Bidder	Cash Payment	Price/Acre	Rental	Oil	Gas	Other

**Legend**

- 20030031
- Wildlife
- Active\_Leases



0 2,000 Feet

IBERIA

P.O.B.

MARSH ISLAND WILDLIFE REFUGE

VERMILION BAY

SL 3498

T17S - R7E

**TRACT 45298 - Iberia Parish, Louisiana**

All of the lands now or formerly constituting the beds and bottoms of all water bodies of every nature and description as to which title is vested in the State of Louisiana, together with all islands arising therein and other lands formed by accretion or by reliction, where allowed by law, excepting tax adjudicated lands, and not presently under mineral lease on March 11, 2020, situated in Iberia Parish, Louisiana, and more particularly described as follows: Beginning at a point having Coordinates of X = 1,864,026.44 and Y = 336,881.10; thence East 4,741.21 feet to a Northwest corner of State Lease No. 1706, as amended, having Coordinates of X = 1,868,767.65 and Y = 336,881.10; thence along the boundary of said State Lease No. 1706 the following courses and distances: South 3,733.52 feet to a point having Coordinates of X = 1,868,767.65 and Y = 333,147.58, North 89 degrees 45 minutes 52 seconds West 3,733.52 feet to a point having Coordinates of X = 1,865,034.16 and Y = 333,162.93 and South 2,710.25 feet to a point on the Northern boundary of State Lease No. 3498, as amended, having Coordinates of X = 1,865,034.16 and Y = 330,452.68; thence along the boundary of said State Lease No. 3498 the following courses and distances: North 84 degrees 40 minutes 06 seconds West 240.20 feet to a point having Coordinates of X = 1,864,795.00 and Y = 330,475.00, North 50 degrees 42 minutes 38 seconds West 71.06 feet to a point having Coordinates of X = 1,864,740.00 and Y = 330,520.00, South 78 degrees 01 minutes 26 seconds West 168.67 feet to a point having Coordinates of X = 1,864,575.00 and Y = 330,485.00, North 79 degrees 41 minutes 43 seconds West 335.41 feet to a point having Coordinates of X = 1,864,245.00 and Y = 330,545.00 and North 51 degrees 34 minutes 55 seconds West 278.95 feet to a point having Coordinates of X = 1,864,026.44 and Y = 330,718.34; thence North 6,162.76 feet to the point of beginning, **LESS AND EXCEPT** all that portion, if any, of State Lease Nos. 1706, as amended, and 3498, as amended, that may lie within the above described tract, containing approximately **466 acres**, all as more particularly outlined on a plat on file in the Office of Mineral Resources, Department of Natural Resources. All bearings, distances and coordinates are based on Louisiana Coordinate System of 1927, (North or South Zone), where applicable.

NOTE: The above description of the Tract nominated for lease has been provided and corrected, where required, exclusively by the nomination party. Any mineral lease selected from this Tract and awarded by the Louisiana State Mineral and Energy Board shall be without warranty of any kind, either express, implied, or statutory, including, but not limited to, the implied warranties of merchantability and fitness for a particular purpose. Should the mineral lease awarded by the Louisiana State Mineral and Energy Board be subsequently modified, cancelled or abrogated due to the existence of conflicting leases, operating agreements, private claims or other future obligations or conditions which may affect all or any portion of the leased Tract, it shall not relieve the Lessee of the obligation to pay any bonus due thereon to the Louisiana State Mineral and Energy Board, nor shall the Louisiana State Mineral and Energy Board be obligated to refund any consideration paid by the Lessor prior to such modification, cancellation, or abrogation, including, but not limited to, bonuses, rentals and royalties.

NOTE: The State of Louisiana does hereby reserve, and this lease shall be subject to, the imprescriptible right of surface use in the nature of a servitude in favor of the Department of Natural Resources, including its Offices and Commissions, for the sole purpose of implementing, constructing, servicing and maintaining approved coastal zone management and/or restoration projects. Utilization of any and all rights derived under this lease by the mineral lessee, its agents, successors or assigns, shall not interfere with nor hinder the reasonable surface use by the Department of Natural Resources, its Offices or Commissions, as herein above reserved.

NOTE: This tract is located in an area designated by the Louisiana Legislature or the Wildlife and Fisheries Commission as a Public Oyster Seed Ground, Reservation, or area of Calcasieu or Sabine Lake. Proposed projects occurring in these areas will be evaluated on a case by case basis by Louisiana Department of Wildlife & Fisheries. Modifications to proposed project features including, but not limited to, access routes, well sites, flowlines, and appurtenant structures maybe required by the Louisiana Department of Wildlife and Fisheries. In addition, compensatory mitigation will be required to offset unavoidable habitat impacts.

NOTE: All or a portion of this Tract lies within one nautical mile of the boundary of the Russell Sage or Marsh Island Wildlife Refuge and Game Preserve. Any activities connected with this lease conducted within this Tract which may pose potential environmental impacts to the said Wildlife Refuge and Game Preserve should be coordinated with the Louisiana Department of Wildlife and Fisheries.

Applicant: LOUISIANA BAYOU OIL & GAS CO.

Bidder	Cash Payment	Price/Acre	Rental	Oil	Gas	Other

**Legend**



20030032

Active\_Leases

IBERIA

VERMILION BAY

SL 1706

SL 3498

T17S - R7E

0 1,000 Feet

P.O.B.

