

**TRACT 45279 - Webster Parish, Louisiana**

All of the lands now or formerly constituting the beds and bottoms of all water bodies of every nature and description as to which title is vested in the State of Louisiana, together with all islands arising therein and other lands formed by accretion or by reliction, where allowed by law, excepting tax adjudicated lands, and not presently under mineral lease on March 11, 2020, situated in Webster Parish, Louisiana, and more particularly described as follows: Beginning at a point having Coordinates of X = 1,725,800.00 and Y = 646,400.00; thence East 15,364.68 feet to a point having Coordinates of X = 1,741,164.68 and Y = 646,400.01; thence South 00 degrees 46 minutes 11 seconds West 724.71 feet to a point being the Northeast corner of State Lease No. 21901 having Coordinates of X = 1,741,154.94 and Y = 645,675.37; thence along the boundary of said State Lease No. 21091 the following: North 89 degrees 01 minutes 55 seconds West 5,441.86 feet to a point having Coordinates of X = 1,735,713.86 and Y = 645,767.31, and South 00 degrees 11 minutes 37 seconds West 10,606.40 feet to a point having Coordinates of X = 1,735,678.04 and Y = 635,160.97; thence North 89 degrees 03 minutes 22 seconds West 11,516.91 feet to a point having Coordinates of X = 1,724,162.69 and Y = 635,350.67; thence North 00 degrees 56 minutes 38 seconds East 5,340.12 feet to a point on the South line of State Lease No. 19542, as amended, having Coordinates of X = 1,724,250.65 and Y = 640,690.07; thence along the boundary of said State Lease No. 19542, as amended, the following: North 89 degrees 57 minutes 41 seconds East 1,244.34 feet to a point having Coordinates of X = 1,725,494.99 and Y = 640,690.91, and North 00 degrees 15 minutes 04 seconds East 5,280.00 feet to a point having Coordinates of X = 1,725,518.13 and Y = 645,970.86; thence South 89 degrees 50 minutes 10 seconds East 281.87 feet to a point having Coordinates of X = 1,725,800.00 and Y = 645,970.05; thence North 429.95 feet to the point of beginning, **LESS AND EXCEPT** Dried Lake Beds sold prior to 1921 located in the West Half of the Northeast Quarter and the Southwest Quarter of Section 26, Township 17 North Range 10 West. (This tract includes only water bottoms claimed and owned by the state and specifically excludes any land which the state or Wildlife and Fisheries may claim or own and to which the mineral rights are vested in them), containing approximately **1,617 acres**, all as more particularly outlined on a plat on file in the Office of Mineral Resources, Department of Natural Resources. All bearings, distances and coordinates are based on Louisiana Coordinate System of 1927, (North or South Zone), where applicable.

NOTE: The above description of the Tract nominated for lease has been provided and corrected, where required, exclusively by the nomination party. Any mineral lease selected from this Tract and awarded by the Louisiana State Mineral and Energy Board shall be without warranty of any kind, either express, implied, or statutory, including, but not limited to, the implied warranties of merchantability and fitness for a particular purpose. Should the mineral lease awarded by the Louisiana State Mineral and Energy Board be subsequently modified, cancelled or abrogated due to the existence of conflicting leases, operating agreements, private claims or other future obligations or conditions which may affect all or any portion of the leased

Tract, it shall not relieve the Lessee of the obligation to pay any bonus due thereon to the Louisiana State Mineral and Energy Board, nor shall the Louisiana State Mineral and Energy Board be obligated to refund any consideration paid by the Lessor prior to such modification, cancellation, or abrogation, including, but not limited to, bonuses, rentals and royalties.

NOTE: Bidders are hereby advised that certain areas in Lake Bistineau are the subject of dual claims to mineral ownership or mineral rights to certain accreted lands by the federal government and, therefore, title to such accreted lands is in dispute. Any bids accepted by the state mineral board which result in a state mineral lease being given places the successful bidder on notice that the State's title to that acreage, whether the whole or a part of the lease awarded, may be challenged. Accordingly, all leases awarded by the state mineral board are without warranty of any kind, either express, implied, or statutory, including, but not limited to merchantability and fitness for a particular purpose. Should the awarded lease be subsequently modified, cancelled, or abrogated in any way as a result of the above mentioned or any other challenge, or conflicting private claims which affect or may affect all or any portion of the leased tract, the successful bidder/Lessee, their successors, or assigns shall not be relieved of the obligation to pay any monies due prior to the modification, cancellation, or abrogation, including, but not limited to, bonus, rental and royalty, nor shall the State be obligated to refund those monies paid.

Applicant: MCGINTY-DURHAM, INC.

Bidder	Cash Payment	Price/Acre	Rental	Oil	Gas	Other

**Legend**

- 20030035
- Active\_Leases
- Counties
- Gas Storage



0 2,500 Feet

WEBSTER

T17N - R10W

P.O.B.

T17N - R9W

SL 19542

LAKE BISTINEAU

SL 21901

BOSSIER

T16N - R10W

BIENVILLE

**TRACT 45280 - Bienville Bossier and Webster Parishes, Louisiana**

All of the lands now or formerly constituting the beds and bottoms of all water bodies of every nature and description as to which title is vested in the State of Louisiana, together with all islands arising therein and other lands formed by accretion or by reliction, where allowed by law, excepting tax adjudicated lands, and not presently under mineral lease on March 11, 2020, situated in Bienville Bossier and Webster Parishes, Louisiana, and more particularly described as follows: Beginning at a point being the Southeast Corner of State Lease No. 18181, as amended, having Coordinates of X = 1,719,781.27 and Y = 629,934.28; thence North 06 degrees 47 minutes 36 seconds East 3,403.33 feet along the East line of said State Lease No. 18181, as amended, to a point having Coordinates of X = 1,720,183.85 and Y = 633,313.72; thence North 00 degrees 17 minutes 42 seconds East 2,092.48 feet along the East line of said State Lease No. 18181, as amended, to its Northeast Corner having Coordinates of X = 1,720,194.63 and Y = 635,406.17; thence North 89 degrees 27 minutes 06 seconds West 1,590.68 feet along the North line of said State Lease No. 18181, as amended, to its intersection with the South line of State Lease No. 16531, as amended, having Coordinates of X = 1,718,604.02 and Y = 635,421.39; thence South 89 degrees 41 minutes 10 seconds East 1,508.58 feet along the South line of said State Lease No. 16531, as amended, to a point having Coordinates of X = 1,720,112.58 and Y = 635,413.13; thence South 89 degrees 41 minutes 10 seconds East 387.43 feet along the South line of said State Lease No. 16531, as amended, to a point being its Southeast Corner having Coordinates of X = 1,720,500.00 and Y = 635,411.01; thence South 89 degrees 03 minutes 22 seconds East 15,180.10 feet to a point being the Southwest corner of State Lease No. 21901 having Coordinates of X = 1,735,678.04 and Y = 635,160.97; thence South 89 degrees 03 minutes 22 seconds East 74.66 feet along the boundary of said State Lease No. 21901 to a point having Coordinates of X = 1,735,752.69 and Y = 635,159.74; thence South 00 degrees 59 minutes 32 seconds West 5,355.14 feet to a point having Coordinates of X = 1,735,659.95 and Y = 629,805.40; thence North 89 degrees 29 minutes 47 seconds West 5,210.15 feet to a point being the Northeast Corner of State Lease No. 20273, as amended, having Coordinates of X = 1,730,450.00 and Y = 629,851.19; thence West 16.19 feet along the North line of said State Lease No. 20273, as amended, to a point having Coordinates of X = 1,730,433.81 and Y = 629,851.19; thence North 89 degrees 06 minutes 51 seconds West 1,307.30 feet along the North line of said State Lease No. 20273, as amended, to a point having Coordinates of X = 1,729,126.67 and Y = 629,871.40; thence North 89 degrees 25 minutes 58 seconds West 3,983.86 feet along the North line of said State Lease No. 20273, as amended, to a point being its Northwest Corner having Coordinates of X = 1,725,143.01 and Y = 629,910.84; thence North 89 degrees 44 minutes 58 seconds West 5,361.79 feet to the point of beginning, (This tract includes only waterbottoms claimed and owned by the state and specifically excludes any land which the state may claim or own and to which the mineral rights are vested in the state), containing approximately **921 acres**, all as more particularly outlined on a plat on file in the Office of Mineral Resources, Department of Natural Resources. All bearings, distances and coordinates are

based on Louisiana Coordinate System of 1927, (North or South Zone), where applicable.

NOTE: The above description of the Tract nominated for lease has been provided and corrected, where required, exclusively by the nomination party. Any mineral lease selected from this Tract and awarded by the Louisiana State Mineral and Energy Board shall be without warranty of any kind, either express, implied, or statutory, including, but not limited to, the implied warranties of merchantability and fitness for a particular purpose. Should the mineral lease awarded by the Louisiana State Mineral and Energy Board be subsequently modified, cancelled or abrogated due to the existence of conflicting leases, operating agreements, private claims or other future obligations or conditions which may affect all or any portion of the leased Tract, it shall not relieve the Lessee of the obligation to pay any bonus due thereon to the Louisiana State Mineral and Energy Board, nor shall the Louisiana State Mineral and Energy Board be obligated to refund any consideration paid by the Lessor prior to such modification, cancellation, or abrogation, including, but not limited to, bonuses, rentals and royalties.

NOTE: This tract encompasses an area beneath which is located on the Bistineau Gas Storage Pool in the Sligo formation of the Pettet Porosity. Accordingly, any mineral related activity, including, but not limited to, the exploration and drilling for, and the production and storage of oil, gas and other liquid or gaseous minerals, conducted under a valid mineral lease which may be obtained from the State, shall be subject to any statewide orders issued by the Louisiana Office of Conservation pertinent to conducting such operations in this area and upon this tract, including particularly, but not limited to, the following: Order Nos. 287, 287-A, 287-A-1, 287-B, Supplement to 287-B, 287-B-1, 287-B-2, 287-B-3, and 287-B-4. The successful bidder on this tract shall contact the operator of the Bistineau Gas Storage Pool and the Office of Conservation prior to initiating and conducting any of the aforementioned activity hereon.

NOTE: Bidders are hereby advised that certain areas in Lake Bistineau are the subject of dual claims to mineral ownership or mineral rights to certain accreted lands by the federal government and, therefore, title to such accreted lands is in dispute. Any bids accepted by the state mineral board which result in a state mineral lease being given places the successful bidder on notice that the State's title to that acreage, whether the whole or a part of the lease awarded, may be challenged. Accordingly, all leases awarded by the state mineral board are without warranty of any kind, either express, implied, or statutory, including, but not limited to merchantability and fitness for a particular purpose. Should the awarded lease be subsequently modified, cancelled, or abrogated in any way as a result of the above mentioned or any other challenge, or conflicting private claims which affect or may affect all or any portion of the leased tract, the successful bidder/Lessee, their successors, or assigns shall not be relieved of the obligation to pay any monies due prior to the modification, cancellation, or

abrogation, including, but not limited to, bonus, rental and royalty, nor shall the State be obligated to refund those monies paid.

Applicant: MCGINTY-DURHAM, INC.

Bidder	Cash Payment	Price/Acre	Rental	Oil	Gas	Other

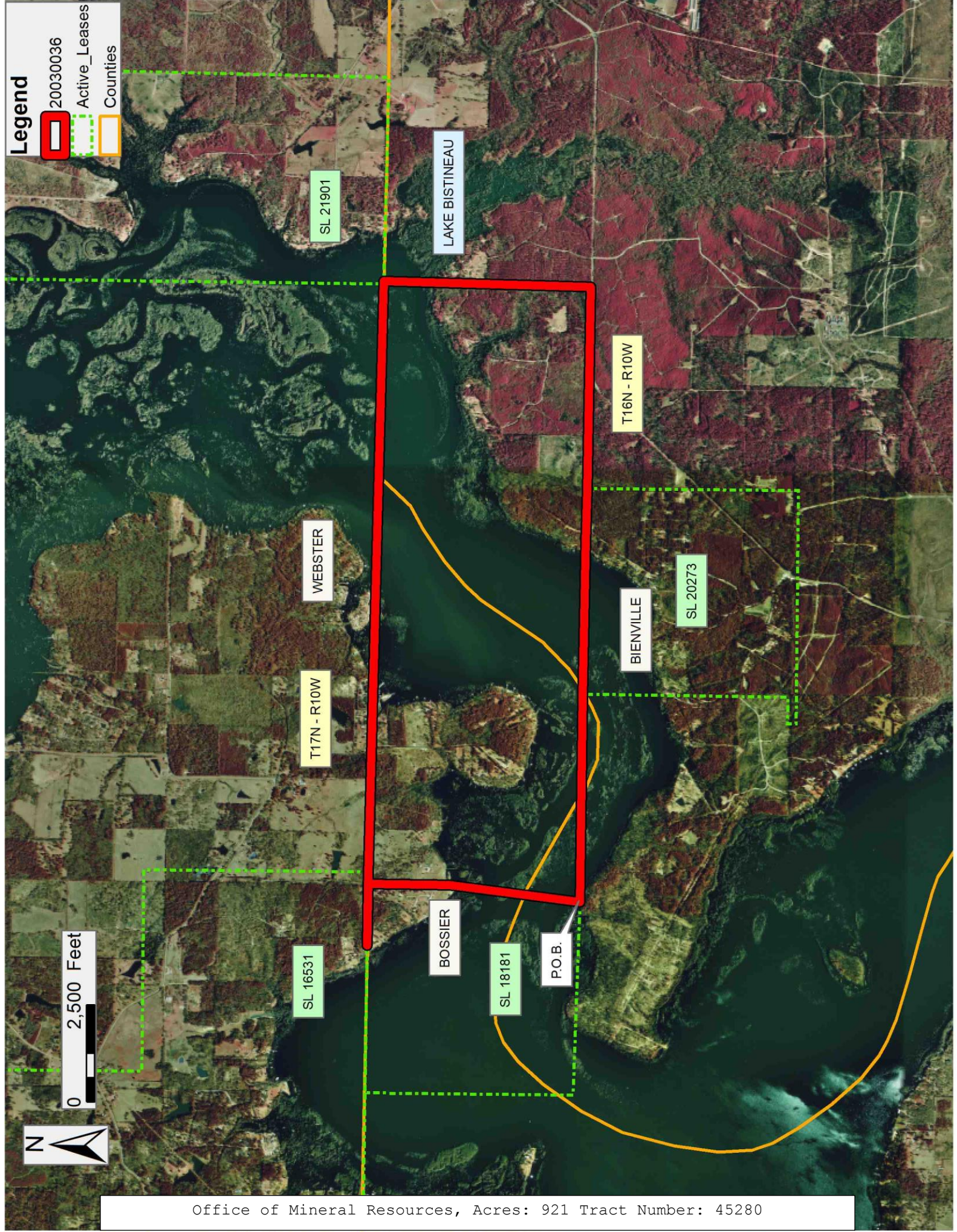
**Legend**

- 20030036
- Active\_Leases
- Counties



0 2,500 Feet

Office of Mineral Resources, Acres: 921 Tract Number: 45280



**TRACT 45281 - Acadia Parish, Louisiana**

All of the lands now or formerly constituting the beds and bottoms of all water bodies of every nature and description as to which title is vested in the State of Louisiana, together with all islands arising therein and other lands formed by accretion or by reliction, where allowed by law, excepting tax adjudicated lands, and not presently under mineral lease on March 11, 2020, situated in Acadia Parish, Louisiana, and more particularly described as follows: Beginning at a point having Coordinates of X = 1,619,887.45 and Y = 613,643.06; thence South 00 degrees 19 minutes 18 seconds West 1,327.20 feet to a point having Coordinates of X = 1,619,880.00 and Y = 612,315.89; thence North 89 degrees 02 minutes 20 seconds West 1,352.29 feet to a point having Coordinates of X = 1,618,527.90 and Y = 612,338.57; thence North 00 degrees 16 minutes 54 seconds East 1,328.80 feet to a point having Coordinates of X = 1,618,534.43 and Y = 613,667.34; thence South 88 degrees 58 minutes 19 seconds East 1,353.24 feet to the point of beginning, containing approximately **1 acre**, all as more particularly outlined on a plat on file in the Office of Mineral Resources, Department of Natural Resources. All bearings, distances and coordinates are based on Louisiana Coordinate System of 1927, (North or South Zone), where applicable.

NOTE: The above description of the Tract nominated for lease has been provided and corrected, where required, exclusively by the nomination party. Any mineral lease selected from this Tract and awarded by the Louisiana State Mineral and Energy Board shall be without warranty of any kind, either express, implied, or statutory, including, but not limited to, the implied warranties of merchantability and fitness for a particular purpose. Should the mineral lease awarded by the Louisiana State Mineral and Energy Board be subsequently modified, cancelled or abrogated due to the existence of conflicting leases, operating agreements, private claims or other future obligations or conditions which may affect all or any portion of the leased Tract, it shall not relieve the Lessee of the obligation to pay any bonus due thereon to the Louisiana State Mineral and Energy Board, nor shall the Louisiana State Mineral and Energy Board be obligated to refund any consideration paid by the Lessor prior to such modification, cancellation, or abrogation, including, but not limited to, bonuses, rentals and royalties.

Applicant: RELIATERRE, LLC

Bidder	Cash Payment	Price/Acre	Rental	Oil	Gas	Other



Legend



20030004

ACADIA

T8S - R2W

P.O.B.

BAYOU DES CANNES



0 500 Feet

**TRACT 45282 - Assumption Parish, Louisiana**

All of the lands now or formerly constituting the beds and bottoms of all water bodies of every nature and description as to which title is vested in the State of Louisiana, together with all islands arising therein and other lands formed by accretion or by reliction, where allowed by law, excepting tax adjudicated lands, and not presently under mineral lease on March 11, 2020, situated in Assumption Parish, Louisiana, and more particularly described as follows: Beginning at a point having Coordinates of X = 2,033,065.49 and Y = 471,876.24; thence East 13,056.00 feet to a point having Coordinates of X = 2,046,121.49 and Y = 471,876.24; thence South 11,949.31 feet to a point having Coordinates of X = 2,046,121.49 and Y = 459,926.93; thence West 13,056.00 feet to a point having Coordinates of X = 2,033,065.49 and Y = 459,926.93; thence North 11,949.31 feet to the point of beginning, containing approximately **466 acres**, all as more particularly outlined on a plat on file in the Office of Mineral Resources, Department of Natural Resources. All bearings, distances and coordinates are based on Louisiana Coordinate System of 1927, (North or South Zone), where applicable.

NOTE: The above description of the Tract nominated for lease has been provided and corrected, where required, exclusively by the nomination party. Any mineral lease selected from this Tract and awarded by the Louisiana State Mineral and Energy Board shall be without warranty of any kind, either express, implied, or statutory, including, but not limited to, the implied warranties of merchantability and fitness for a particular purpose. Should the mineral lease awarded by the Louisiana State Mineral and Energy Board be subsequently modified, cancelled or abrogated due to the existence of conflicting leases, operating agreements, private claims or other future obligations or conditions which may affect all or any portion of the leased Tract, it shall not relieve the Lessee of the obligation to pay any bonus due thereon to the Louisiana State Mineral and Energy Board, nor shall the Louisiana State Mineral and Energy Board be obligated to refund any consideration paid by the Lessor prior to such modification, cancellation, or abrogation, including, but not limited to, bonuses, rentals and royalties.

NOTE: The State of Louisiana does hereby reserve, and this lease shall be subject to, the imprescriptible right of surface use in the nature of a servitude in favor of the Department of Natural Resources, including its Offices and Commissions, for the sole purpose of implementing, constructing, servicing and maintaining approved coastal zone management and/or restoration projects. Utilization of any and all rights derived under this lease by the mineral lessee, its agents, successors or assigns, shall not interfere with nor hinder the reasonable surface use by the Department of Natural Resources, its Offices or Commissions, as herein above reserved.

Applicant: LOUISIANA BAYOU OIL & GAS CO.

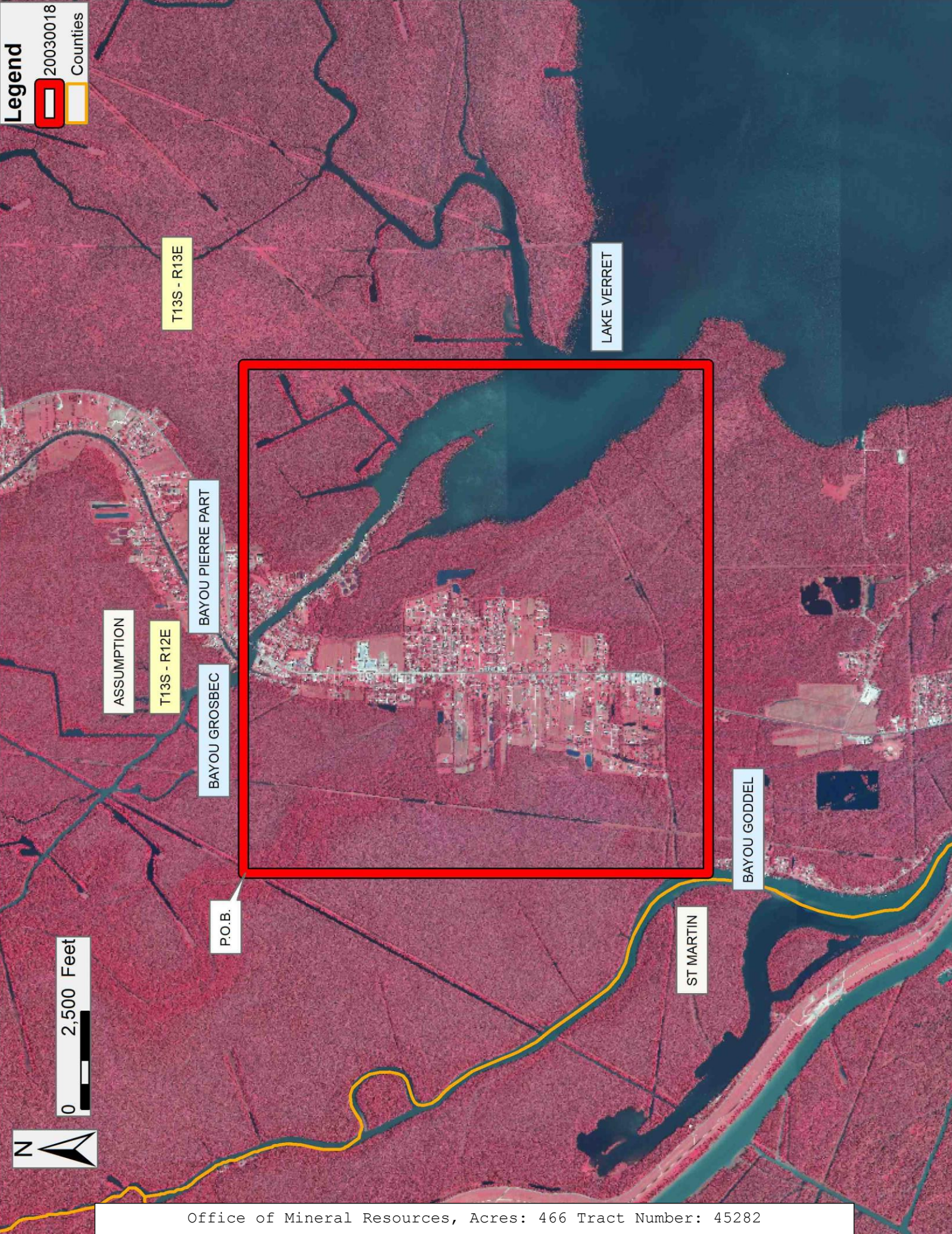
Bidder	Cash Payment	Price/ Acre	Rental	Oil	Gas	Other

Legend



20030018

Counties



0 2,500 Feet



**TRACT 45283 - St. Martin Parish, Louisiana**

All of the lands now or formerly constituting the beds and bottoms of all water bodies of every nature and description as to which title is vested in the State of Louisiana, together with all islands arising therein and other lands formed by accretion or by reliction, where allowed by law, excepting tax adjudicated lands, and not presently under mineral lease on March 11, 2020, situated in St. Martin Parish, Louisiana, and more particularly described as follows: Beginning at a point within the Atchafalaya Basin, also being the Northeast corner of State Lease No. 20925, having Coordinates of X = 2,020,008.97 and Y = 471,876.24; thence East approximately 2,183 feet to a point on the East boundary of said Atchafalaya Basin, having a Coordinate of Y = 471,876.24; thence along the boundary of said Atchafalaya Basin the following courses: Southerly, Southeasterly, Southerly and Southeasterly to a point of intersection with an East West line having a Coordinate of Y = 460,020.00; thence West approximately 6,401 feet to the Southeast corner of said State Lease No. 20925, also being the Northeast corner of State Lease No. 20930, having Coordinates of X = 2,020,116.78 and Y = 460,020.00; thence North 00 degrees 31 minutes 16 seconds West 11,856.73 feet along the East line of said State Lease No. 20925 to the point of beginning, **LESS AND EXCEPT** that portion, if any, of the above described tract that may lie outside of the boundary of the Atchafalaya Basin, and **LESS AND EXCEPT** any right, title, and interest in lands owned by and not under lease from the State of Louisiana, on behalf of the St. Martin Parish School Board, situated in Section 16, Township 13 South, Range 12 East, St. Martin Parish, Louisiana, contained within the above described tract, (This lease includes only waterbottoms claimed and owned by the state and specifically excludes any land which the state may claim or own and to which the mineral rights are vested in the state), containing approximately **90 acres**, all as more particularly outlined on a plat on file in the Office of Mineral Resources, Department of Natural Resources. All bearings, distances and coordinates are based on Louisiana Coordinate System of 1927, (North or South Zone), where applicable.

NOTE: The above description of the Tract nominated for lease has been provided and corrected, where required, exclusively by the nomination party. Any mineral lease selected from this Tract and awarded by the Louisiana State Mineral and Energy Board shall be without warranty of any kind, either express, implied, or statutory, including, but not limited to, the implied warranties of merchantability and fitness for a particular purpose. Should the mineral lease awarded by the Louisiana State Mineral and Energy Board be subsequently modified, cancelled or abrogated due to the existence of conflicting leases, operating agreements, private claims or other future obligations or conditions which may affect all or any portion of the leased Tract, it shall not relieve the Lessee of the obligation to pay any bonus due thereon to the Louisiana State Mineral and Energy Board, nor shall the Louisiana State Mineral and Energy Board be obligated to refund any consideration paid by the Lessor prior to such modification, cancellation, or abrogation, including, but not limited to, bonuses, rentals and royalties.

NOTE: This acreage is entirely within the boundary of the Atchafalaya Basin Legal Area.

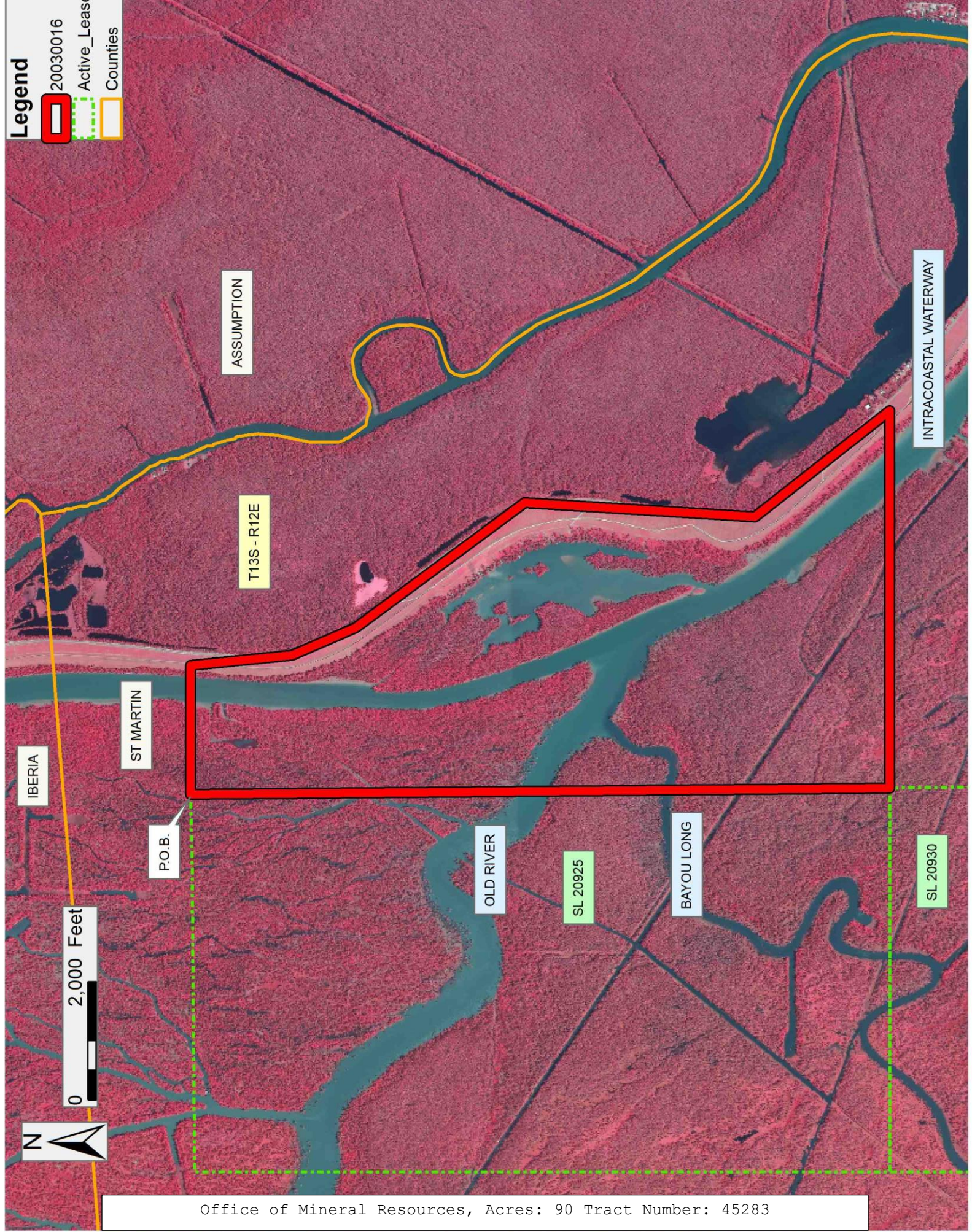
NOTE: The State of Louisiana does hereby reserve, and this lease shall be subject to, the imprescriptible right of surface use in the nature of a servitude in favor of the Department of Natural Resources, including its Offices and Commissions, for the sole purpose of implementing, constructing, servicing and maintaining approved coastal zone management and/or restoration projects. Utilization of any and all rights derived under this lease by the mineral lessee, its agents, successors or assigns, shall not interfere with nor hinder the reasonable surface use by the Department of Natural Resources, its Offices or Commissions, as herein above reserved.

Applicant: LOUISIANA BAYOU OIL & GAS CO.

Bidder	Cash Payment	Price/Acre	Rental	Oil	Gas	Other

**Legend**

- 20030016
- Active\_Leases
- Counties



Office of Mineral Resources, Acres: 90 Tract Number: 45283

**TRACT 45284 - Assumption and St. Martin Parishes, Louisiana**

All of the lands now or formerly constituting the beds and bottoms of all water bodies of every nature and description as to which title is vested in the State of Louisiana, together with all islands arising therein and other lands formed by accretion or by reliction, where allowed by law, excepting tax adjudicated lands, and not presently under mineral lease on March 11, 2020, situated in Assumption and St. Martin Parishes, Louisiana, and more particularly described as follows: Beginning at a point having Coordinates of X = 2,033,065.49 and Y = 471,876.24; thence South 11,949.31 feet to a point having Coordinates of X = 2,033,065.49 and Y = 459,926.93; thence North 89 degrees 11 minutes 08 seconds West approximately 6,548 feet to a point on the East boundary of the Atchafalaya Basin; thence along said boundary of said Atchafalaya Basin, the following courses: Northwesterly, Northerly, Northwesterly and Northerly to a point of intersection with an East West line having a Coordinate of Y = 471,876.24; thence East approximately 10,874 feet to the point of beginning, **LESS AND EXCEPT** all that portion, if any, of the above described tract that may lie within the boundary of the Atchafalaya Basin, and **LESS AND EXCEPT** any right, title, and interest in lands owned by and not under lease from the State of Louisiana, on behalf of the Assumption and St. Martin Parish School Boards, situated in Section 16, Township 13 South, Range 12 East, Assumption and St. Martin Parishes, Louisiana, contained within the above described tract, containing approximately **156 acres**, all as more particularly outlined on a plat on file in the Office of Mineral Resources, Department of Natural Resources. All bearings, distances and coordinates are based on Louisiana Coordinate System of 1927, (North or South Zone), where applicable.

NOTE: The above description of the Tract nominated for lease has been provided and corrected, where required, exclusively by the nomination party. Any mineral lease selected from this Tract and awarded by the Louisiana State Mineral and Energy Board shall be without warranty of any kind, either express, implied, or statutory, including, but not limited to, the implied warranties of merchantability and fitness for a particular purpose. Should the mineral lease awarded by the Louisiana State Mineral and Energy Board be subsequently modified, cancelled or abrogated due to the existence of conflicting leases, operating agreements, private claims or other future obligations or conditions which may affect all or any portion of the leased Tract, it shall not relieve the Lessee of the obligation to pay any bonus due thereon to the Louisiana State Mineral and Energy Board, nor shall the Louisiana State Mineral and Energy Board be obligated to refund any consideration paid by the Lessor prior to such modification, cancellation, or abrogation, including, but not limited to, bonuses, rentals and royalties.

NOTE: The State of Louisiana does hereby reserve, and this lease shall be subject to, the imprescriptible right of surface use in the nature of a servitude in favor of the Department of Natural Resources, including its Offices and Commissions, for the sole purpose of implementing, constructing, servicing and maintaining approved coastal zone management and/or restoration projects. Utilization of any and all rights derived under this



lease by the mineral lessee, its agents, successors or assigns, shall not interfere with nor hinder the reasonable surface use by the Department of Natural Resources, its Offices or Commissions, as herein above reserved.

Applicant: LOUISIANA BAYOU OIL & GAS CO.

Bidder	Cash Payment	Price/Acre	Rental	Oil	Gas	Other

**Legend**

- 20030017
- Counties

P.O.B.

T13S - R12E

ASSUMPTION

ST MARTIN

BAYOU GODDEL

OLD RIVER



**TRACT 45285 - Assumption and St. Martin Parishes, Louisiana**

All of the lands now or formerly constituting the beds and bottoms of all water bodies of every nature and description as to which title is vested in the State of Louisiana, together with all islands arising therein and other lands formed by accretion or by reliction, where allowed by law, excepting tax adjudicated lands, and not presently under mineral lease on March 11, 2020, situated in Assumption and St. Martin Parishes, Louisiana, and more particularly described as follows: Beginning at a point having Coordinates of X = 2,033,065.49 and Y = 459,926.93; thence East 7,950.13 feet to a point having Coordinates of X = 2,041,015.62 and Y = 459,926.93; thence Southerly approximately 7,682 feet to the Northeast corner of the Northern portion of State Lease No. 346, as amended; thence Westerly approximately 6,536 feet to a point on the East boundary of the Atchafalaya Basin; thence Northwesterly along said boundary of said Atchafalaya Basin to a point of intersection with a line having a Coordinate of Y = 460,020.00; thence Easterly approximately 6,548 feet to the point of beginning, **LESS AND EXCEPT** that portion, if any, of the above described tract that may lie within of the boundary of the Atchafalaya Basin, and **LESS AND EXCEPT** any right, title, and interest in lands owned by and not under lease from the State of Louisiana, on behalf of the Assumption and St. Martin Parish School Board, situated in Section 16, Township 13 South, Range 12 East, Assumption and St. Martin Parishes, Louisiana, contained within the above described tract, containing approximately **232 acres**, all as more particularly outlined on a plat on file in the Office of Mineral Resources, Department of Natural Resources. All bearings, distances and coordinates are based on Louisiana Coordinate System of 1927, (North or South Zone), where applicable.

NOTE: The above description of the Tract nominated for lease has been provided and corrected, where required, exclusively by the nomination party. Any mineral lease selected from this Tract and awarded by the Louisiana State Mineral and Energy Board shall be without warranty of any kind, either express, implied, or statutory, including, but not limited to, the implied warranties of merchantability and fitness for a particular purpose. Should the mineral lease awarded by the Louisiana State Mineral and Energy Board be subsequently modified, cancelled or abrogated due to the existence of conflicting leases, operating agreements, private claims or other future obligations or conditions which may affect all or any portion of the leased Tract, it shall not relieve the Lessee of the obligation to pay any bonus due thereon to the Louisiana State Mineral and Energy Board, nor shall the Louisiana State Mineral and Energy Board be obligated to refund any consideration paid by the Lessor prior to such modification, cancellation, or abrogation, including, but not limited to, bonuses, rentals and royalties.

NOTE: The State of Louisiana does hereby reserve, and this lease shall be subject to, the imprescriptible right of surface use in the nature of a servitude in favor of the Department of Natural Resources, including its Offices and Commissions, for the sole purpose of implementing, constructing, servicing and maintaining approved coastal zone management and/or restoration projects. Utilization of any and all rights derived under this

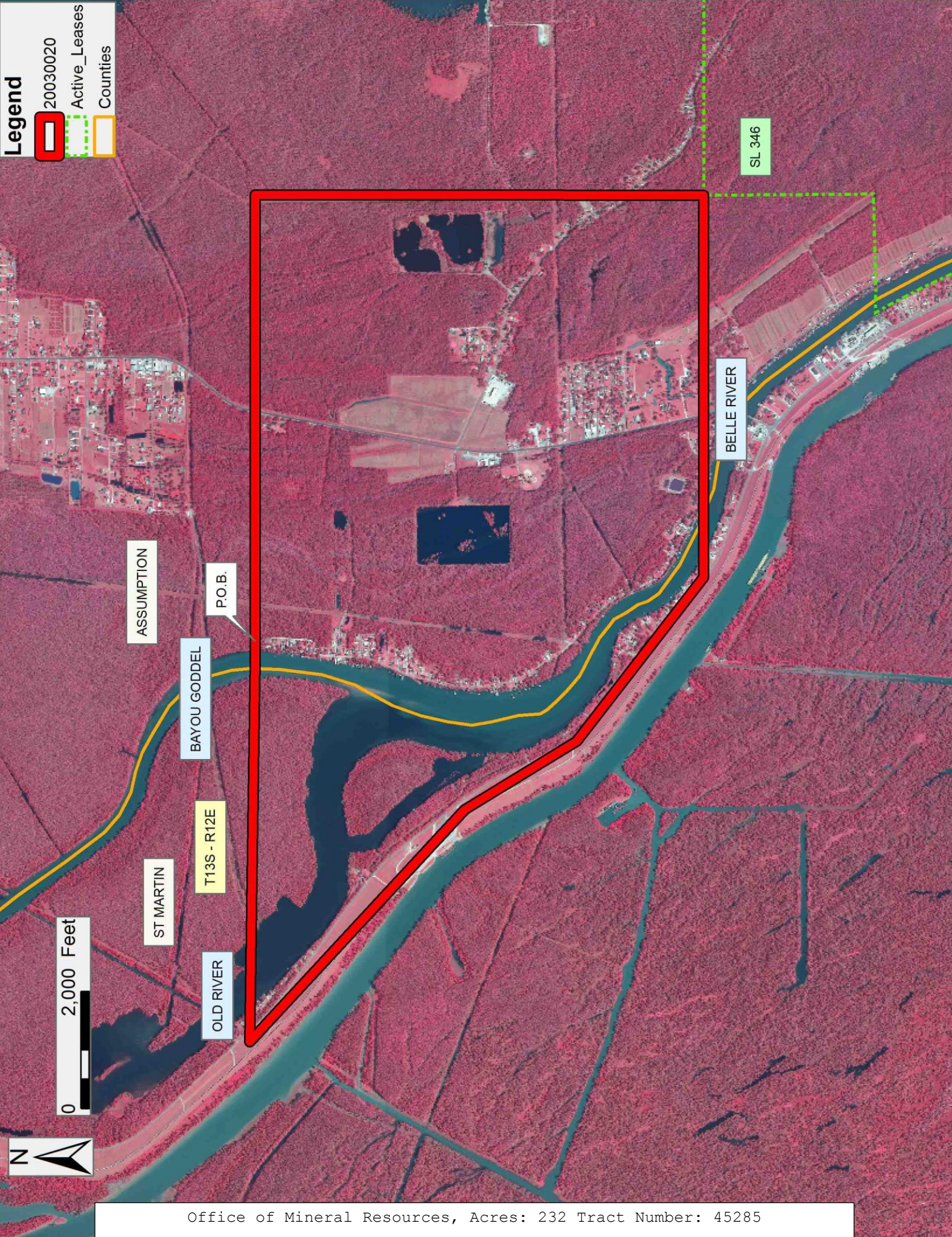
lease by the mineral lessee, its agents, successors or assigns, shall not interfere with nor hinder the reasonable surface use by the Department of Natural Resources, its Offices or Commissions, as herein above reserved.

Applicant: LOUISIANA BAYOU OIL & GAS CO.

Bidder	Cash Payment	Price/Acre	Rental	Oil	Gas	Other

**Legend**

- 20030020
- Active\_Leases
- Counties



Office of Mineral Resources, Acres: 232 Tract Number: 45285

**TRACT 45286 - Assumption Parish, Louisiana**

All of the lands now or formerly constituting the beds and bottoms of all water bodies of every nature and description as to which title is vested in the State of Louisiana, together with all islands arising therein and other lands formed by accretion or by reliction, where allowed by law, excepting tax adjudicated lands, and not presently under mineral lease on March 11, 2020, situated in Assumption Parish, Louisiana, and more particularly described as follows: Beginning at a point having Coordinates of X = 2,041,015.62 and Y = 459,926.93; thence East 10,636.27 feet to a point having Coordinates of X = 2,051,651.89 and Y = 459,926.93; thence South 15,642.58 feet to a point having Coordinates of X = 2,051,651.89 and Y = 444,284.35; thence Westerly approximately 5,367 feet to the Southeast corner of the Northern portion of State Lease No. 346, as amended; thence Northerly approximately 8,250 feet and Westerly approximately 5,292 feet along the boundary of said State Lease No. 346 to its Northwest corner; thence Northerly approximately 7,682 feet to the point of beginning, **LESS AND EXCEPT** any portion of the Northern portion of said State Lease No. 346 that may fall within the above described tract, containing approximately **2,015 acres**, all as more particularly outlined on a plat on file in the Office of Mineral Resources, Department of Natural Resources. All bearings, distances and coordinates are based on Louisiana Coordinate System of 1927, (North or South Zone), where applicable.

NOTE: The above description of the Tract nominated for lease has been provided and corrected, where required, exclusively by the nomination party. Any mineral lease selected from this Tract and awarded by the Louisiana State Mineral and Energy Board shall be without warranty of any kind, either express, implied, or statutory, including, but not limited to, the implied warranties of merchantability and fitness for a particular purpose. Should the mineral lease awarded by the Louisiana State Mineral and Energy Board be subsequently modified, cancelled or abrogated due to the existence of conflicting leases, operating agreements, private claims or other future obligations or conditions which may affect all or any portion of the leased Tract, it shall not relieve the Lessee of the obligation to pay any bonus due thereon to the Louisiana State Mineral and Energy Board, nor shall the Louisiana State Mineral and Energy Board be obligated to refund any consideration paid by the Lessor prior to such modification, cancellation, or abrogation, including, but not limited to, bonuses, rentals and royalties.

NOTE: The State of Louisiana does hereby reserve, and this lease shall be subject to, the imprescriptible right of surface use in the nature of a servitude in favor of the Department of Natural Resources, including its Offices and Commissions, for the sole purpose of implementing, constructing, servicing and maintaining approved coastal zone management and/or restoration projects. Utilization of any and all rights derived under this lease by the mineral lessee, its agents, successors or assigns, shall not interfere with nor hinder the reasonable surface use by the Department of Natural Resources, its Offices or Commissions, as herein above reserved.

Applicant: LOUISIANA BAYOU OIL & GAS CO.

Bidder	Cash Payment	Price/Acre	Rental	Oil	Gas	Other

**Legend**

- 20030021
- Active\_Leases
- Counties





**TRACT 45287 - St. Martin Parish, Louisiana**

All of the lands now or formerly constituting the beds and bottoms of all water bodies of every nature and description as to which title is vested in the State of Louisiana, together with all islands arising therein and other lands formed by accretion or by reliction, where allowed by law, excepting tax adjudicated lands, and not presently under mineral lease on March 11, 2020, situated in St. Martin Parish, Louisiana, and more particularly described as follows: Beginning at the Northeast corner of State Lease No. 20930, also being the Southeast corner of State Lease No. 20925, having Coordinates of X = 2,020,116.78 and Y = 460,020.00; thence East approximately 6,401 feet to a point on the East boundary of the Atchafalaya Basin, having a Coordinate of Y = 460,020.00; thence Southeasterly along said boundary of said Atchafalaya Basin to a point of intersection with an East West line having a Coordinate of Y = 452,244.63; thence West approximately 14,304 feet to a point having Coordinates of X = 2,020,166.27 and Y = 452,244.63; thence North 2,332.33 feet to the Southeast corner of said State Lease No. 20930 having Coordinates of X = 2,020,166.27 and Y = 454,576.96; thence North 00 degrees 31 minutes 15 seconds West 5,443.27 feet along the Eastern boundary of said State Lease No. 20930 to the point of beginning, **LESS AND EXCEPT** that portion, if any, of the above described tract that may lie outside of the boundary of the Atchafalaya Basin, and **LESS AND EXCEPT** any right, title, and interest in lands owned by and not under lease from the State of Louisiana, on behalf of the St. Martin Parish School Board, situated in Section 16, Township 13 South, Range 12 East, St. Martin Parish, Louisiana, contained within the above described tract, containing approximately **2 acres**, all as more particularly outlined on a plat on file in the Office of Mineral Resources, Department of Natural Resources. All bearings, distances and coordinates are based on Louisiana Coordinate System of 1927, (North or South Zone), where applicable.

NOTE: The above description of the Tract nominated for lease has been provided and corrected, where required, exclusively by the nomination party. Any mineral lease selected from this Tract and awarded by the Louisiana State Mineral and Energy Board shall be without warranty of any kind, either express, implied, or statutory, including, but not limited to, the implied warranties of merchantability and fitness for a particular purpose. Should the mineral lease awarded by the Louisiana State Mineral and Energy Board be subsequently modified, cancelled or abrogated due to the existence of conflicting leases, operating agreements, private claims or other future obligations or conditions which may affect all or any portion of the leased Tract, it shall not relieve the Lessee of the obligation to pay any bonus due thereon to the Louisiana State Mineral and Energy Board, nor shall the Louisiana State Mineral and Energy Board be obligated to refund any consideration paid by the Lessor prior to such modification, cancellation, or abrogation, including, but not limited to, bonuses, rentals and royalties.

NOTE: This acreage is entirely within the boundary of the Atchafalaya Basin Legal Area.

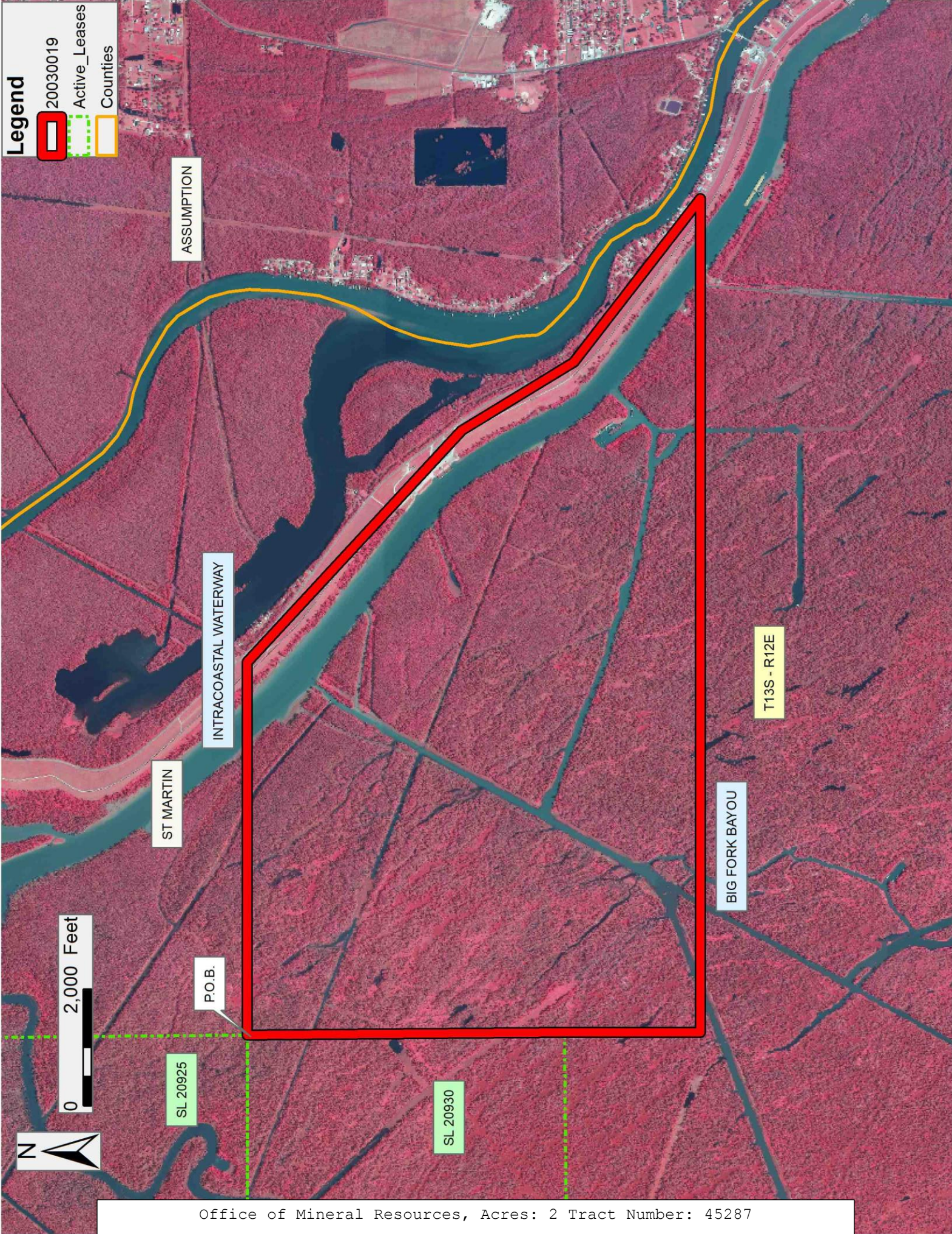
NOTE: The State of Louisiana does hereby reserve, and this lease shall be subject to, the imprescriptible right of surface use in the nature of a servitude in favor of the Department of Natural Resources, including its Offices and Commissions, for the sole purpose of implementing, constructing, servicing and maintaining approved coastal zone management and/or restoration projects. Utilization of any and all rights derived under this lease by the mineral lessee, its agents, successors or assigns, shall not interfere with nor hinder the reasonable surface use by the Department of Natural Resources, its Offices or Commissions, as herein above reserved.

Applicant: LOUISIANA BAYOU OIL & GAS CO.

Bidder	Cash Payment	Price/Acre	Rental	Oil	Gas	Other

**Legend**

- 20030019
- Active\_Leases
- Counties



Office of Mineral Resources, Acres: 2 Tract Number: 45287

**TRACT 45288 - Assumption and St. Martin Parishes, Louisiana**

All of the lands now or formerly constituting the beds and bottoms of all water bodies of every nature and description as to which title is vested in the State of Louisiana, together with all islands arising therein and other lands formed by accretion or by reliction, where allowed by law, excepting tax adjudicated lands, and not presently under mineral lease on March 11, 2020, situated in Assumption and St. Martin Parishes, Louisiana, and more particularly described as follows: Beginning at a point having Coordinates of X = 2,054,251.89 and Y = 444,284.35; thence South 10,560.00 feet to a point having Coordinates of X = 2,054,251.89 and Y = 433,724.35; thence West 2,600.00 feet to a point having Coordinates of X = 2,051,651.89 and Y = 433,724.35; thence South 6,809.26 feet to a point having Coordinates of X = 2,051,651.89 and Y = 426,915.09; thence West approximately 4,023 feet to a point on the East boundary of the Atchafalaya Basin, having a Coordinate of Y = 426,915.09; thence Northwesterly along said boundary of said Atchafalaya Basin to a point on the Southern boundary of the Southern portion of State Lease No. 346, as amended; thence along the boundary of said State Lease No. 346 the following courses: Easterly, Southeasterly, Northerly, Northwesterly, Easterly, Northerly, Westerly, Southeasterly, and Westerly to a point on the boundary of said Atchafalaya Basin; thence Northerly to the Southwest corner of the Northern portion of said State Lease No. 346; thence Easterly approximately 6,541 feet along the Southern boundary of said State Lease No. 346 to its Southeast corner; thence East approximately 7,973 feet to the point of beginning, (This tract includes only waterbottoms claimed and owned by the state and specifically excludes any land which the state may claim or own and to which the mineral rights are vested in the state), **LESS AND EXCEPT** that portion, if any, of the above described tract that may lie inside of the boundary of the Atchafalaya Basin, and **LESS AND EXCEPT** any portion of said State Lease No. 346 that may fall within the above described tract, containing approximately **1,989 acres**, all as more particularly outlined on a plat on file in the Office of Mineral Resources, Department of Natural Resources. All bearings, distances and coordinates are based on Louisiana Coordinate System of 1927, (North or South Zone), where applicable.

NOTE: The above description of the Tract nominated for lease has been provided and corrected, where required, exclusively by the nomination party. Any mineral lease selected from this Tract and awarded by the Louisiana State Mineral and Energy Board shall be without warranty of any kind, either express, implied, or statutory, including, but not limited to, the implied warranties of merchantability and fitness for a particular purpose. Should the mineral lease awarded by the Louisiana State Mineral and Energy Board be subsequently modified, cancelled or abrogated due to the existence of conflicting leases, operating agreements, private claims or other future obligations or conditions which may affect all or any portion of the leased Tract, it shall not relieve the Lessee of the obligation to pay any bonus due thereon to the Louisiana State Mineral and Energy Board, nor shall the Louisiana State Mineral and Energy Board be obligated to refund any consideration paid by the Lessor prior to such modification, cancellation, or abrogation, including, but not limited to, bonuses, rentals and royalties.

NOTE: The State of Louisiana does hereby reserve, and this lease shall be subject to, the imprescriptible right of surface use in the nature of a servitude in favor of the Department of Natural Resources, including its Offices and Commissions, for the sole purpose of implementing, constructing, servicing and maintaining approved coastal zone management and/or restoration projects. Utilization of any and all rights derived under this lease by the mineral lessee, its agents, successors or assigns, shall not interfere with nor hinder the reasonable surface use by the Department of Natural Resources, its Offices or Commissions, as herein above reserved.

Applicant: LOUISIANA BAYOU OIL & GAS CO.

Bidder	Cash Payment	Price/Acre	Rental	Oil	Gas	Other

**Legend**

- 20030022
- Active\_Leases
- Counties

