

TRACT 45112 - Terrebonne Parish, Louisiana

All of the lands now or formerly constituting the beds and bottoms of all water bodies of every nature and description as to which title is vested in the State of Louisiana, together with all islands arising therein and other lands formed by accretion or by reliction, where allowed by law, excepting tax adjudicated lands, and not presently under mineral lease on March 13, 2019, situated in Terrebonne Parish, Louisiana, and more particularly described as follows: Beginning at a point having Coordinates of X = 2,052,100.00 and Y = 218,033.00; thence East 18,480.00 feet to a point having Coordinates of X = 2,070,580.00 and Y = 218,033.00; thence South 8,310.00 feet to a point having Coordinates of X = 2,070,580.00 and Y = 209,723.00; thence West 18,480.00 feet to a point having Coordinates of X = 2,052,100.00 and Y = 209,723.00; thence North 8,310.00 feet to the point of beginning, **LESS AND EXCEPT** any right, title, and interest in lands owned by and not under lease from the State of Louisiana, on behalf of the Terrebonne Parish School Board, situated in Section 16, Township 21 South, Range 13 East, Terrebonne Parish, Louisiana, contained within the above described tract, containing approximately **2,489 acres**, all as more particularly outlined on a plat on file in the Office of Mineral Resources, Department of Natural Resources. All bearings, distances and coordinates are based on Louisiana Coordinate System of 1927, (North or South Zone), where applicable.

NOTE: The above description of the Tract nominated for lease has been provided and corrected, where required, exclusively by the nomination party. Any mineral lease selected from this Tract and awarded by the Louisiana State Mineral and Energy Board shall be without warranty of any kind, either express, implied, or statutory, including, but not limited to, the implied warranties of merchantability and fitness for a particular purpose. Should the mineral lease awarded by the Louisiana State Mineral and Energy Board be subsequently modified, cancelled or abrogated due to the existence of conflicting leases, operating agreements, private claims or other future obligations or conditions which may affect all or any portion of the leased Tract, it shall not relieve the Lessee of the obligation to pay any bonus due thereon to the Louisiana State Mineral and Energy Board, nor shall the Louisiana State Mineral and Energy Board be obligated to refund any consideration paid by the Lessor prior to such modification, cancellation, or abrogation, including, but not limited to, bonuses, rentals and royalties.

NOTE: The State of Louisiana does hereby reserve, and this lease shall be subject to, the imprescriptible right of surface use in the nature of a servitude in favor of the Department of Natural Resources, including its Offices and Commissions, for the sole purpose of implementing, constructing, servicing and maintaining approved coastal zone management and/or restoration projects. Utilization of any and all rights derived under this lease by the mineral lessee, its agents, successors or assigns, shall not interfere with nor hinder the reasonable surface use by the Department of Natural Resources, its Offices or Commissions, as herein above reserved.

Applicant: DAY EXPLORATION

Bidder	Cash Payment	Price/ Acre	Rental	Oil	Gas	Other



0 2,500 Feet

Legend



19030025

TERREBONNE

FOURLEAGUE BAY

T21S - R13E

P.O.B.

T21S - R12E

OLD OYSTER BAYOU

BAY CASTAGNIER

OYSTER BAYOU

TRACT 45113 - Terrebonne Parish, Louisiana

All of the lands now or formerly constituting the beds and bottoms of all water bodies of every nature and description as to which title is vested in the State of Louisiana, together with all islands arising therein and other lands formed by accretion or by reliction, where allowed by law, excepting tax adjudicated lands, and not presently under mineral lease on March 13, 2019, situated in Terrebonne Parish, Louisiana, and more particularly described as follows: Beginning at a point having Coordinates of X = 2,073,060.00 and Y = 209,723.00; thence East 15,076.00 feet to a point having Coordinates of X = 2,088,136.00 and Y = 209,723.00; thence North 3,885.00 feet to a point having Coordinates of X = 2,088,136.00 and Y = 213,608.00; thence East 3,404.00 feet to a point having Coordinates of X = 2,091,540.00 and Y = 213,608.00; thence South 14,808.00 feet to a point having Coordinates of X = 2,091,540.00 and Y = 198,800.00; thence West 18,480.00 feet to a point having Coordinates of X = 2,073,060.00 and Y = 198,800.00; thence North 10,923.00 feet to the point of beginning, containing approximately **2,151 acres**, all as more particularly outlined on a plat on file in the Office of Mineral Resources, Department of Natural Resources. All bearings, distances and coordinates are based on Louisiana Coordinate System of 1927, (North or South Zone), where applicable.

NOTE: The above description of the Tract nominated for lease has been provided and corrected, where required, exclusively by the nomination party. Any mineral lease selected from this Tract and awarded by the Louisiana State Mineral and Energy Board shall be without warranty of any kind, either express, implied, or statutory, including, but not limited to, the implied warranties of merchantability and fitness for a particular purpose. Should the mineral lease awarded by the Louisiana State Mineral and Energy Board be subsequently modified, cancelled or abrogated due to the existence of conflicting leases, operating agreements, private claims or other future obligations or conditions which may affect all or any portion of the leased Tract, it shall not relieve the Lessee of the obligation to pay any bonus due thereon to the Louisiana State Mineral and Energy Board, nor shall the Louisiana State Mineral and Energy Board be obligated to refund any consideration paid by the Lessor prior to such modification, cancellation, or abrogation, including, but not limited to, bonuses, rentals and royalties.

NOTE: The State of Louisiana does hereby reserve, and this lease shall be subject to, the imprescriptible right of surface use in the nature of a servitude in favor of the Department of Natural Resources, including its Offices and Commissions, for the sole purpose of implementing, constructing, servicing and maintaining approved coastal zone management and/or restoration projects. Utilization of any and all rights derived under this lease by the mineral lessee, its agents, successors or assigns, shall not interfere with nor hinder the reasonable surface use by the Department of Natural Resources, its Offices or Commissions, as herein above reserved.

NOTE: This tract is located in an area designated by the Louisiana Legislature or the Wildlife and Fisheries Commission as a Public Oyster Seed

Ground or Reservation. Surface activity within the boundaries of these designated Public Oyster Seed Grounds or Reservations is prohibited.

Applicant: DAY EXPLORATION

Bidder	Cash Payment	Price/ Acre	Rental	Oil	Gas	Other



0 2,500 Feet

Legend



190300029

TERREBONNE

T21S - R13E

T21S - R14E

OLD OYSTER BAYOU LAKE

P.O.B.

BAY JUNOP



TRACT 45114 - Terrebonne Parish, Louisiana

All of the lands now or formerly constituting the beds and bottoms of all water bodies of every nature and description as to which title is vested in the State of Louisiana, together with all islands arising therein and other lands formed by accretion or by reliction, where allowed by law, excepting tax adjudicated lands, and not presently under mineral lease on March 13, 2019, situated in Terrebonne Parish, Louisiana, and more particularly described as follows: Beginning at a point having Coordinates of X = 2,091,540.00 and Y = 213,608.00; thence East 15,076.00 feet to a point having Coordinates of X = 2,106,616.00 and Y = 213,608.00; thence South 14,808.00 feet to a point having Coordinates of X = 2,106,616.00 and Y = 198,800.00; thence West 15,076.00 feet to a point having Coordinates of X = 2,091,540.00 and Y = 198,800.00; thence North 14,808.00 feet to the point of beginning, **LESS AND EXCEPT** all that portion of State Lease No. 725 which lies entirely within the above described tract, being more fully described as follows: Commencing at a point being the point of beginning of the above described nominated tract having Coordinates of X = 2,091,540.00 and Y = 213,608.00; thence South 15 degrees 32 minutes 09 seconds East 7,816.19 feet to the point of beginning of State Lease No. 725; thence North 2,259.80 feet to a point; thence North 89 degrees 24 minutes 50 seconds East 5,280.28 feet to a point; thence North 2,966.19 feet to a point; thence East 5,280.00 feet to a point; thence South 5,280.00 feet to a point; thence West 10,560.00 feet to the point of beginning, and **LESS AND EXCEPT** any right, title, and interest in lands owned by and not under lease from the State of Louisiana, on behalf of the Terrebonne Parish School Board, situated in Section 16, Township 21 South, Range 14 East, Terrebonne Parish, Louisiana, contained within the above described tract. The above nominated tract contains approximately **2,325 acres**, all as more particularly outlined on a plat on file in the Office of Mineral Resources, Department of Natural Resources. All bearings, distances and coordinates are based on Louisiana Coordinate System of 1927, (North or South Zone), where applicable.

NOTE: The above description of the Tract nominated for lease has been provided and corrected, where required, exclusively by the nomination party. Any mineral lease selected from this Tract and awarded by the Louisiana State Mineral and Energy Board shall be without warranty of any kind, either express, implied, or statutory, including, but not limited to, the implied warranties of merchantability and fitness for a particular purpose. Should the mineral lease awarded by the Louisiana State Mineral and Energy Board be subsequently modified, cancelled or abrogated due to the existence of conflicting leases, operating agreements, private claims or other future obligations or conditions which may affect all or any portion of the leased Tract, it shall not relieve the Lessee of the obligation to pay any bonus due thereon to the Louisiana State Mineral and Energy Board, nor shall the Louisiana State Mineral and Energy Board be obligated to refund any consideration paid by the Lessor prior to such modification, cancellation, or abrogation, including, but not limited to, bonuses, rentals and royalties.

NOTE: The State of Louisiana does hereby reserve, and this lease shall be subject to, the imprescriptible right of surface use in the nature of a servitude in favor of the Department of Natural Resources, including its Offices and Commissions, for the sole purpose of implementing, constructing, servicing and maintaining approved coastal zone management and/or restoration projects. Utilization of any and all rights derived under this lease by the mineral lessee, its agents, successors or assigns, shall not interfere with nor hinder the reasonable surface use by the Department of Natural Resources, its Offices or Commissions, as herein above reserved.

NOTE: This tract is located in an area designated by the Louisiana Legislature or the Wildlife and Fisheries Commission as a Public Oyster Seed Ground or Reservation. Surface activity within the boundaries of these designated Public Oyster Seed Grounds or Reservations is prohibited.

Applicant: DAY EXPLORATION

Bidder	Cash Payment	Price/ Acre	Rental	Oil	Gas	Other



0 2,500 Feet

Legend



19030030

Active_Leases



TERREBONNE

P.O.B.

T21S - R14E

KING LAKE

SL 725

BAY JUNOP

JACK STOUT BAY

TAYLORS BAYOU

TRACT 45115 - Terrebonne Parish, Louisiana

All of the lands now or formerly constituting the beds and bottoms of all water bodies of every nature and description as to which title is vested in the State of Louisiana, together with all islands arising therein and other lands formed by accretion or by reliction, where allowed by law, excepting tax adjudicated lands, and not presently under mineral lease on March 13, 2019, situated in Terrebonne Parish, Louisiana, and more particularly described as follows: Beginning at a point having Coordinates of X = 2,106,616.00 and Y = 213,608.00; thence East 8,780.00 feet to a point having Coordinates of X = 2,115,396.00 and Y = 213,608.00; thence South 14,808.00 feet to a point having Coordinates of X = 2,115,396.00 and Y = 198,800.00; thence West 8,780.00 feet to a point having Coordinates of X = 2,106,616.00 and Y = 198,800.00; thence North 14,808.00 feet to the point of beginning, containing approximately **2,242 acres**, all as more particularly outlined on a plat on file in the Office of Mineral Resources, Department of Natural Resources. All bearings, distances and coordinates are based on Louisiana Coordinate System of 1927, (North or South Zone), where applicable.

NOTE: The above description of the Tract nominated for lease has been provided and corrected, where required, exclusively by the nomination party. Any mineral lease selected from this Tract and awarded by the Louisiana State Mineral and Energy Board shall be without warranty of any kind, either express, implied, or statutory, including, but not limited to, the implied warranties of merchantability and fitness for a particular purpose. Should the mineral lease awarded by the Louisiana State Mineral and Energy Board be subsequently modified, cancelled or abrogated due to the existence of conflicting leases, operating agreements, private claims or other future obligations or conditions which may affect all or any portion of the leased Tract, it shall not relieve the Lessee of the obligation to pay any bonus due thereon to the Louisiana State Mineral and Energy Board, nor shall the Louisiana State Mineral and Energy Board be obligated to refund any consideration paid by the Lessor prior to such modification, cancellation, or abrogation, including, but not limited to, bonuses, rentals and royalties.

NOTE: The State of Louisiana does hereby reserve, and this lease shall be subject to, the imprescriptible right of surface use in the nature of a servitude in favor of the Department of Natural Resources, including its Offices and Commissions, for the sole purpose of implementing, constructing, servicing and maintaining approved coastal zone management and/or restoration projects. Utilization of any and all rights derived under this lease by the mineral lessee, its agents, successors or assigns, shall not interfere with nor hinder the reasonable surface use by the Department of Natural Resources, its Offices or Commissions, as herein above reserved.

Applicant: DAY EXPLORATION

Bidder	Cash Payment	Price/ Acre	Rental	Oil	Gas	Other



0 2,500 Feet

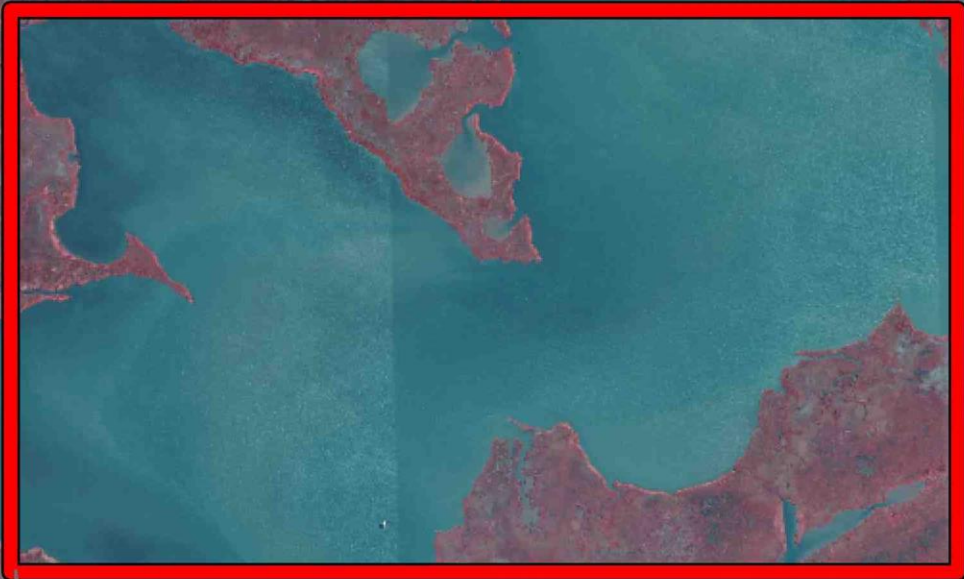
T21S - R14E

P.O.B.

KING LAKE

TERREBONNE

BAY VOISIN



Legend



19030031

TRACT 45116 - Terrebonne Parish, Louisiana

All of the lands now or formerly constituting the beds and bottoms of all water bodies of every nature and description as to which title is vested in the State of Louisiana, together with all islands arising therein and other lands formed by accretion or by reliction, where allowed by law, excepting tax adjudicated lands, and not presently under mineral lease on March 13, 2019, situated in Terrebonne Parish, Louisiana, and more particularly described as follows: Beginning at a point having Coordinates of X = 2,115,396.00 and Y = 213,608.00; thence East 2,321.00 feet to a point having Coordinates of X = 2,117,717.00 and Y = 213,608.00; thence North 2,412.00 feet to a point having Coordinates of X = 2,117,717.00 and Y = 216,020.00; thence East 12,383.00 feet to a point having Coordinates of X = 2,130,100.00 and Y = 216,020.00; thence South 9,820.00 feet to a point having Coordinates of X = 2,130,100.00 and Y = 206,200.00; thence West 14,704.00 feet to a point having Coordinates of X = 2,115,396.00 and Y = 206,200.00; thence North 7,408.00 feet to the point of beginning, **LESS AND EXCEPT** any right, title, and interest in lands owned by and not under lease from the State of Louisiana, on behalf of the Terrebonne Parish School Board, situated in Section 16, Township 21 South, Range 15 East, Terrebonne Parish, Louisiana, contained within the above described tract, containing approximately **2,296 acres**, all as more particularly outlined on a plat on file in the Office of Mineral Resources, Department of Natural Resources. All bearings, distances and coordinates are based on Louisiana Coordinate System of 1927, (North or South Zone), where applicable.

NOTE: The above description of the Tract nominated for lease has been provided and corrected, where required, exclusively by the nomination party. Any mineral lease selected from this Tract and awarded by the Louisiana State Mineral and Energy Board shall be without warranty of any kind, either express, implied, or statutory, including, but not limited to, the implied warranties of merchantability and fitness for a particular purpose. Should the mineral lease awarded by the Louisiana State Mineral and Energy Board be subsequently modified, cancelled or abrogated due to the existence of conflicting leases, operating agreements, private claims or other future obligations or conditions which may affect all or any portion of the leased Tract, it shall not relieve the Lessee of the obligation to pay any bonus due thereon to the Louisiana State Mineral and Energy Board, nor shall the Louisiana State Mineral and Energy Board be obligated to refund any consideration paid by the Lessor prior to such modification, cancellation, or abrogation, including, but not limited to, bonuses, rentals and royalties.

NOTE: The State of Louisiana does hereby reserve, and this lease shall be subject to, the imprescriptible right of surface use in the nature of a servitude in favor of the Department of Natural Resources, including its Offices and Commissions, for the sole purpose of implementing, constructing, servicing and maintaining approved coastal zone management and/or restoration projects. Utilization of any and all rights derived under this lease by the mineral lessee, its agents, successors or assigns, shall not

interfere with nor hinder the reasonable surface use by the Department of Natural Resources, its Offices or Commissions, as herein above reserved.

NOTE: This tract is located in an area designated by the Louisiana Legislature or the Wildlife and Fisheries Commission as a Public Oyster Seed Ground or Reservation. Surface activity within the boundaries of these designated Public Oyster Seed Grounds or Reservations is prohibited.

Applicant: DAY EXPLORATION

Bidder	Cash Payment	Price/ Acre	Rental	Oil	Gas	Other



0 2,500 Feet

Legend



19030032

TERREBONNE

BAYOU DU LARGE

T21S - R15E

P.O.B.

KING LAKE

CAILLOU LAKE

TRACT 45117 - Portion of Block 6, Ship Shoal Area, Terrebonne Parish, Louisiana

All of the lands now or formerly constituting the beds and bottoms of all water bodies of every nature and description as to which title is vested in the State of Louisiana, together with all islands arising therein and other lands formed by accretion or by reliction, where allowed by law, excepting tax adjudicated lands, and not presently under mineral lease on March 13, 2019, situated in Terrebonne Parish, Louisiana, and more particularly described as follows: Beginning at a point having Coordinates of X = 2,054,580.00 and Y = 209,723.00; thence East 18,480.00 feet to a point having Coordinates of X = 2,073,060.00 and Y = 209,723.00; thence South 10,923.00 feet to a point having Coordinates of X = 2,073,060.00 and Y = 198,800.00; thence West 9,473.74 feet to a point on the Louisiana Coastline, as decreed by the Supreme Court of the United States, as determined by a Special Master appointed therein, in litigation styled *United States v. State of Louisiana et al No. 9 Original*, in 1975, having Coordinates of X = 2,063,586.26 and Y = 198,800.00; thence along said Coastline the following courses: Northwesterly on a straight line to a point having Coordinates of X = 2,062,055 and Y = 199,555, Northwesterly on a straight line to a point having Coordinates of X = 2,058,700 and Y = 200,495, Northwesterly on a straight line to a point having Coordinates of X = 2,057,430 and Y = 200,980, Northwesterly on a straight line to a point having Coordinates of X = 2,055,610 and Y = 201,415, Northwesterly on a straight line to a point having Coordinates of X = 2,054,750 and Y = 201,215, and Southwesterly on a straight line to a point having Coordinates of X = 2,054,580.00 and Y = 201,226.44; thence North 8,496.56 feet to the point of beginning, **LESS AND EXCEPT** any right, title, and interest in lands owned by and not under lease from the State of Louisiana, on behalf of the Terrebonne Parish School Board, situated in Section 16, Township 21 South, Range 13 East, Terrebonne Parish, Louisiana, contained within the above described tract, containing approximately **667 acres**, all as more particularly outlined on a plat on file in the Office of Mineral Resources, Department of Natural Resources. All bearings, distances and coordinates are based on Louisiana Coordinate System of 1927, (North or South Zone), where applicable.

NOTE: The above description of the Tract nominated for lease has been provided and corrected, where required, exclusively by the nomination party. Any mineral lease selected from this Tract and awarded by the Louisiana State Mineral and Energy Board shall be without warranty of any kind, either express, implied, or statutory, including, but not limited to, the implied warranties of merchantability and fitness for a particular purpose. Should the mineral lease awarded by the Louisiana State Mineral and Energy Board be subsequently modified, cancelled or abrogated due to the existence of conflicting leases, operating agreements, private claims or other future obligations or conditions which may affect all or any portion of the leased Tract, it shall not relieve the Lessee of the obligation to pay any bonus due thereon to the Louisiana State Mineral and Energy Board, nor shall the Louisiana State Mineral and Energy Board be obligated to refund any

consideration paid by the Lessor prior to such modification, cancellation, or abrogation, including, but not limited to, bonuses, rentals and royalties.

NOTE: The State of Louisiana does hereby reserve, and this lease shall be subject to, the imprescriptible right of surface use in the nature of a servitude in favor of the Department of Natural Resources, including its Offices and Commissions, for the sole purpose of implementing, constructing, servicing and maintaining approved coastal zone management and/or restoration projects. Utilization of any and all rights derived under this lease by the mineral lessee, its agents, successors or assigns, shall not interfere with nor hinder the reasonable surface use by the Department of Natural Resources, its Offices or Commissions, as herein above reserved.

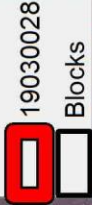
Applicant: DAY EXPLORATION

Bidder	Cash Payment	Price/ Acre	Rental	Oil	Gas	Other



0 2,500 Feet

Legend



TERREBONNE

T21S - R13E

OYSTER BAYOU

BAY CASTAGNIER

P.O.B.

GULF OF MEXICO

SHIP SHOAL AREA

SS0005

SS0006

TRACT 45118 - Terrebonne Parish, Louisiana

All of the lands now or formerly constituting the beds and bottoms of all water bodies of every nature and description as to which title is vested in the State of Louisiana, together with all islands arising therein and other lands formed by accretion or by reliction, where allowed by law, excepting tax adjudicated lands, and not presently under mineral lease on March 13, 2019, situated in Terrebonne Parish, Louisiana, and more particularly described as follows: Beginning at a point having Coordinates of X = 2,036,100.00 and Y = 209,723.00; thence East 18,480.00 feet to a point having Coordinates of X = 2,054,580.00 and Y = 209,723.00; thence South 8,496.56 feet to a point on the Louisiana Coastline, as decreed by the Supreme Court of the United States, as determined by a Special Master appointed therein, in litigation styled *United States v. State of Louisiana et al No. 9 Original*, in 1975, having Coordinates of X = 2,054,580.00 and Y = 201,226.44; thence along said Coastline the following courses: Northwesterly on a straight line to a point having Coordinates of X = 2,053,190 and Y = 201,320, Northwesterly on a straight line to a point having Coordinates of X = 2,051,090 and Y = 201,230, Northwesterly on a straight line to a point having Coordinates of X = 2,049,230 and Y = 201,255, Northwesterly on a straight line to a point having Coordinates of X = 2,045,960 and Y = 201,470, Northwesterly on a straight line to a point having Coordinates of X = 2,042,475 and Y = 201,660, Northwesterly on a straight line to a point having Coordinates of X = 2,037,075 and Y = 203,200 and Northwesterly on a straight line to a point having Coordinates of X = 2,036,100.00 and Y = 203,353.75; thence North 6,369.25 feet to the point of beginning, **LESS AND EXCEPT** any right, title, and interest in lands owned by and not under lease from the State of Louisiana, on behalf of the Terrebonne Parish School Board, situated in Section 16, Township 21 South, Range 12 East, Terrebonne Parish, Louisiana, contained within the above described tract, containing approximately **639 acres**, all as more particularly outlined on a plat on file in the Office of Mineral Resources, Department of Natural Resources. All bearings, distances and coordinates are based on Louisiana Coordinate System of 1927, (North or South Zone), where applicable.

NOTE: The above description of the Tract nominated for lease has been provided and corrected, where required, exclusively by the nomination party. Any mineral lease selected from this Tract and awarded by the Louisiana State Mineral and Energy Board shall be without warranty of any kind, either express, implied, or statutory, including, but not limited to, the implied warranties of merchantability and fitness for a particular purpose. Should the mineral lease awarded by the Louisiana State Mineral and Energy Board be subsequently modified, cancelled or abrogated due to the existence of conflicting leases, operating agreements, private claims or other future obligations or conditions which may affect all or any portion of the leased Tract, it shall not relieve the Lessee of the obligation to pay any bonus due thereon to the Louisiana State Mineral and Energy Board, nor shall the Louisiana State Mineral and Energy Board be obligated to refund any consideration paid by the Lessor prior to such modification, cancellation, or abrogation, including, but not limited to, bonuses, rentals and royalties.

NOTE: The State of Louisiana does hereby reserve, and this lease shall be subject to, the imprescriptible right of surface use in the nature of a servitude in favor of the Department of Natural Resources, including its Offices and Commissions, for the sole purpose of implementing, constructing, servicing and maintaining approved coastal zone management and/or restoration projects. Utilization of any and all rights derived under this lease by the mineral lessee, its agents, successors or assigns, shall not interfere with nor hinder the reasonable surface use by the Department of Natural Resources, its Offices or Commissions, as herein above reserved.

Applicant: DAY EXPLORATION

Bidder	Cash Payment	Price/ Acre	Rental	Oil	Gas	Other



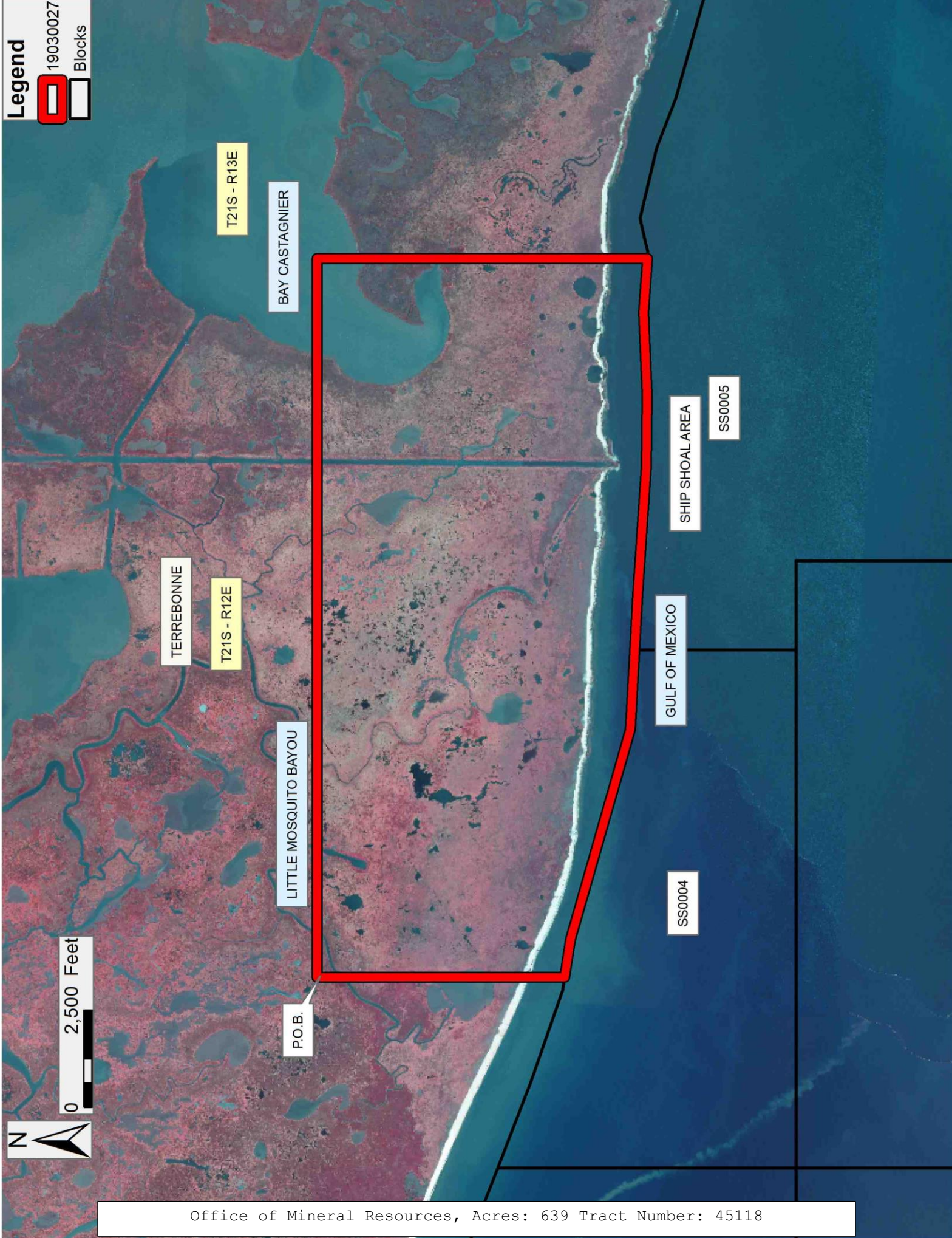
0 2,500 Feet

Legend



19030027

Blocks



TRACT 45119 - Terrebonne Parish, Louisiana

All of the lands now or formerly constituting the beds and bottoms of all water bodies of every nature and description as to which title is vested in the State of Louisiana, together with all islands arising therein and other lands formed by accretion or by reliction, where allowed by law, excepting tax adjudicated lands, and not presently under mineral lease on March 13, 2019, situated in Terrebonne Parish, Louisiana, and more particularly described as follows: Beginning at a point having Coordinates of X = 2,115,396.00 and Y = 206,200.00; thence East 14,704.00 feet to a point having Coordinates of X = 2,130,100.00 and Y = 206,200.00; thence South 7,400.00 feet to a point having Coordinates of X = 2,130,100.00 and Y = 198,800.00; thence West 14,704.00 feet to a point having Coordinates of X = 2,115,396.00 and Y = 198,800.00; thence North 7,400.00 feet to the point of beginning, containing approximately **2,201 acres**, all as more particularly outlined on a plat on file in the Office of Mineral Resources, Department of Natural Resources. All bearings, distances and coordinates are based on Louisiana Coordinate System of 1927, (North or South Zone), where applicable.

NOTE: The above description of the Tract nominated for lease has been provided and corrected, where required, exclusively by the nomination party. Any mineral lease selected from this Tract and awarded by the Louisiana State Mineral and Energy Board shall be without warranty of any kind, either express, implied, or statutory, including, but not limited to, the implied warranties of merchantability and fitness for a particular purpose. Should the mineral lease awarded by the Louisiana State Mineral and Energy Board be subsequently modified, cancelled or abrogated due to the existence of conflicting leases, operating agreements, private claims or other future obligations or conditions which may affect all or any portion of the leased Tract, it shall not relieve the Lessee of the obligation to pay any bonus due thereon to the Louisiana State Mineral and Energy Board, nor shall the Louisiana State Mineral and Energy Board be obligated to refund any consideration paid by the Lessor prior to such modification, cancellation, or abrogation, including, but not limited to, bonuses, rentals and royalties.

NOTE: The State of Louisiana does hereby reserve, and this lease shall be subject to, the imprescriptible right of surface use in the nature of a servitude in favor of the Department of Natural Resources, including its Offices and Commissions, for the sole purpose of implementing, constructing, servicing and maintaining approved coastal zone management and/or restoration projects. Utilization of any and all rights derived under this lease by the mineral lessee, its agents, successors or assigns, shall not interfere with nor hinder the reasonable surface use by the Department of Natural Resources, its Offices or Commissions, as herein above reserved.

NOTE: This tract is located in an area designated by the Louisiana Legislature or the Wildlife and Fisheries Commission as a Public Oyster Seed Ground or Reservation. Surface activity within the boundaries of these designated Public Oyster Seed Grounds or Reservations is prohibited.

Applicant: DAY EXPLORATION

Bidder	Cash Payment	Price/ Acre	Rental	Oil	Gas	Other



0 2,500 Feet

Legend



19030033

TERREBONNE

CAILLOU LAKE

P.O.B.

BAY VOISIN

GRAND BAYOU DU LARGE

TRACT 45120 - Portion of Blocks 39, 40, 47, and 48, Ship Shoal Area, Terrebonne Parish, Louisiana

All of the lands now or formerly constituting the beds and bottoms of all water bodies of every nature and description as to which title is vested in the State of Louisiana, together with all islands arising therein and other lands formed by accretion or by reliction, where allowed by law, excepting tax adjudicated lands, and not presently under mineral lease on March 13, 2019, situated in Terrebonne Parish, Louisiana, and more particularly described as follows: Beginning at a point within Block 40, Ship Shoal Area, having Coordinates of X = 2,132,119.00 and Y = 143,915.00; thence South 2,361.47 feet to a point being on the common line of Blocks 40 and 47, Ship Shoal Area, having Coordinates of X = 2,132,119.00 and Y = 141,553.53; thence South 4,215.08 feet to a point on the Louisiana Coastline, as decreed by the Supreme Court of the United States, as determined by a Special Master appointed therein, in litigation styled *United States v. State of Louisiana et al No. 9 Original*, in 1975, having Coordinates of X = 2,132,119.00 and Y = 137,338.45; thence along said Louisiana Coastline the following: Northwesterly along a straight line to a point having Coordinates of X = 2,128,819 and Y = 138,694, Northwesterly along a straight line to a point having Coordinates of X = 2,126,697 and Y = 139,353, Northwesterly along a straight line to a point having Coordinates of X = 2,122,523 and Y = 140,238, Northwesterly along a straight line to a point having Coordinates of X = 2,118,829 and Y = 141,971, Northwesterly along a straight line to a point having Coordinates of X = 2,118,065 and Y = 142,532, Northwesterly along a straight line to a point having Coordinates of X = 2,117,317 and Y = 143,491, Northeasterly along a straight line to a point having Coordinates of X = 2,117,362 and Y = 143,583, and Northeasterly along a straight line to a point having Coordinates of X = 2,117,771.87 and Y = 143,915.00; thence East 7,280.13 feet to a point being on the common line of 39 and 40, Ship Shoal Area, having Coordinates of X = 2,124,800.00 and Y = 143,915.00; thence East 7,319.00 feet to the to the point of beginning, **LESS AND EXCEPT** any portion of the Isles Dernieres Barrier Islands Refuge that lies within the above described tract, containing approximately **1,160 acres**, all as more particularly outlined on a plat on file in the Office of Mineral Resources, Department of Natural Resources. All bearings, distances and coordinates are based on Louisiana Coordinate System of 1927, (North or South Zone), where applicable.

NOTE: The above description of the Tract nominated for lease has been provided and corrected, where required, exclusively by the nomination party. Any mineral lease selected from this Tract and awarded by the Louisiana State Mineral and Energy Board shall be without warranty of any kind, either express, implied, or statutory, including, but not limited to, the implied warranties of merchantability and fitness for a particular purpose. Should the mineral lease awarded by the Louisiana State Mineral and Energy Board be subsequently modified, cancelled or abrogated due to the existence of conflicting leases, operating agreements, private claims or other future obligations or conditions which may affect all or any portion of the leased Tract, it shall not relieve the Lessee of the obligation to pay any bonus

due thereon to the Louisiana State Mineral and Energy Board, nor shall the Louisiana State Mineral and Energy Board be obligated to refund any consideration paid by the Lessor prior to such modification, cancellation, or abrogation, including, but not limited to, bonuses, rentals and royalties.

NOTE: The State of Louisiana does hereby reserve, and this lease shall be subject to, the imprescriptible right of surface use in the nature of a servitude in favor of the Department of Natural Resources, including its Offices and Commissions, for the sole purpose of implementing, constructing, servicing and maintaining approved coastal zone management and/or restoration projects. Utilization of any and all rights derived under this lease by the mineral lessee, its agents, successors or assigns, shall not interfere with nor hinder the reasonable surface use by the Department of Natural Resources, its Offices or Commissions, as herein above reserved.

NOTE: It appears, according to our records, that a portion of this Tract is located within the restrictive safety fairway area as set out by the Corps of Engineers, U.S. Army and/or the restrictive anchorage area as set out by the U.S. Coast Guard.

Applicant: ROBERT A. SCHROEDER, INC.

Bidder	Cash Payment	Price/ Acre	Rental	Oil	Gas	Other

19030034

Wildlife

Blocks

Legend

