

TRACT 45102 - Terrebonne Parish, Louisiana

All of the lands now or formerly constituting the beds and bottoms of all water bodies of every nature and description as to which title is vested in the State of Louisiana, together with all islands arising therein and other lands formed by accretion or by reliction, where allowed by law, excepting tax adjudicated lands, and not presently under mineral lease on March 13, 2019, situated in Terrebonne Parish, Louisiana, and more particularly described as follows: Beginning at a point having Coordinates of X = 2,070,580.00 and Y = 244,520.00; thence East 17,556.00 feet to a point having Coordinates of X = 2,088,136.00 and Y = 244,520.00; thence South 17,556.00 feet to a point having Coordinates of X = 2,088,136.00 and Y = 226,964.00; thence West 17,556.00 feet to a point having Coordinates of X = 2,070,580.00 and Y = 226,964.00; thence North 17,556.00 feet to the point of beginning, containing approximately **2,391 acres**, all as more particularly outlined on a plat on file in the Office of Mineral Resources, Department of Natural Resources. All bearings, distances and coordinates are based on Louisiana Coordinate System of 1927, (North or South Zone), where applicable.

NOTE: The above description of the Tract nominated for lease has been provided and corrected, where required, exclusively by the nomination party. Any mineral lease selected from this Tract and awarded by the Louisiana State Mineral and Energy Board shall be without warranty of any kind, either express, implied, or statutory, including, but not limited to, the implied warranties of merchantability and fitness for a particular purpose. Should the mineral lease awarded by the Louisiana State Mineral and Energy Board be subsequently modified, cancelled or abrogated due to the existence of conflicting leases, operating agreements, private claims or other future obligations or conditions which may affect all or any portion of the leased Tract, it shall not relieve the Lessee of the obligation to pay any bonus due thereon to the Louisiana State Mineral and Energy Board, nor shall the Louisiana State Mineral and Energy Board be obligated to refund any consideration paid by the Lessor prior to such modification, cancellation, or abrogation, including, but not limited to, bonuses, rentals and royalties.

NOTE: The State of Louisiana does hereby reserve, and this lease shall be subject to, the imprescriptible right of surface use in the nature of a servitude in favor of the Department of Natural Resources, including its Offices and Commissions, for the sole purpose of implementing, constructing, servicing and maintaining approved coastal zone management and/or restoration projects. Utilization of any and all rights derived under this lease by the mineral lessee, its agents, successors or assigns, shall not interfere with nor hinder the reasonable surface use by the Department of Natural Resources, its Offices or Commissions, as herein above reserved.

Applicant: DAY EXPLORATION

Bidder	Cash Payment	Price/ Acre	Rental	Oil	Gas	Other



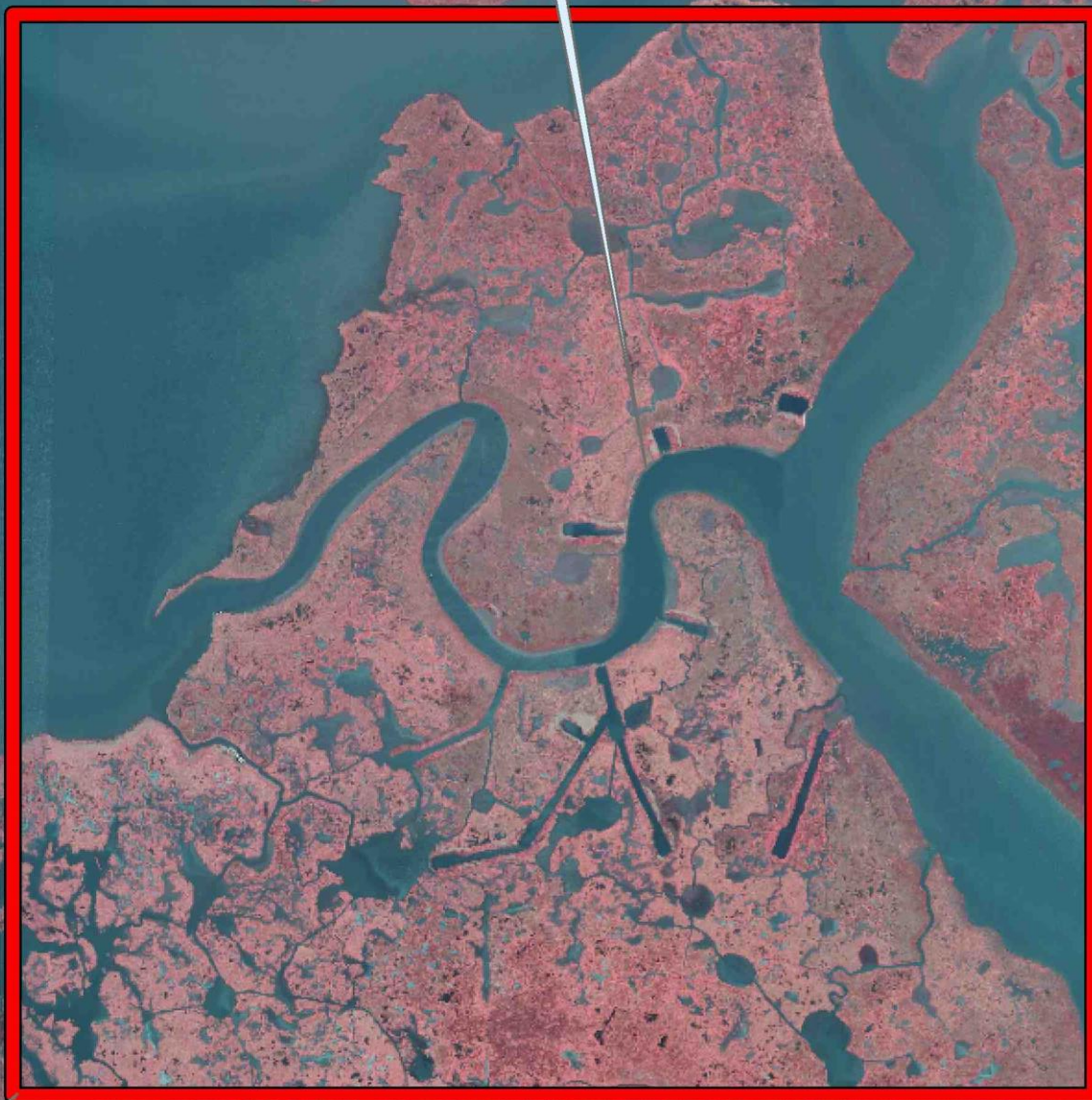
TERREBONNE

LOST LAKE

T20S - R14E

RICE BAYOU

LOST LAKE PASS



BLUE HAMMOCK BAYOU

T20S - R13E

P.O.B.

0 2,500 Feet



TRACT 45103 - Terrebonne Parish, Louisiana

All of the lands now or formerly constituting the beds and bottoms of all water bodies of every nature and description as to which title is vested in the State of Louisiana, together with all islands arising therein and other lands formed by accretion or by reliction, where allowed by law, excepting tax adjudicated lands, and not presently under mineral lease on March 13, 2019, situated in Terrebonne Parish, Louisiana, and more particularly described as follows: Beginning at a point having Coordinates of X = 2,036,100.00 and Y = 238,203.00; thence East 16,000.00 feet to a point having Coordinates of X = 2,052,100.00 and Y = 238,203.00; thence South 18,480.00 feet to a point having Coordinates of X = 2,052,100.00 and Y = 219,723.00; thence West 16,000.00 feet to a point having Coordinates of X = 2,036,100.00 and Y = 219,723.00; thence North 18,480.00 feet to the point of beginning, containing approximately **2,395 acres**, all as more particularly outlined on a plat on file in the Office of Mineral Resources, Department of Natural Resources. All bearings, distances and coordinates are based on Louisiana Coordinate System of 1927, (North or South Zone), where applicable.

NOTE: The above description of the Tract nominated for lease has been provided and corrected, where required, exclusively by the nomination party. Any mineral lease selected from this Tract and awarded by the Louisiana State Mineral and Energy Board shall be without warranty of any kind, either express, implied, or statutory, including, but not limited to, the implied warranties of merchantability and fitness for a particular purpose. Should the mineral lease awarded by the Louisiana State Mineral and Energy Board be subsequently modified, cancelled or abrogated due to the existence of conflicting leases, operating agreements, private claims or other future obligations or conditions which may affect all or any portion of the leased Tract, it shall not relieve the Lessee of the obligation to pay any bonus due thereon to the Louisiana State Mineral and Energy Board, nor shall the Louisiana State Mineral and Energy Board be obligated to refund any consideration paid by the Lessor prior to such modification, cancellation, or abrogation, including, but not limited to, bonuses, rentals and royalties.

NOTE: The State of Louisiana does hereby reserve, and this lease shall be subject to, the imprescriptible right of surface use in the nature of a servitude in favor of the Department of Natural Resources, including its Offices and Commissions, for the sole purpose of implementing, constructing, servicing and maintaining approved coastal zone management and/or restoration projects. Utilization of any and all rights derived under this lease by the mineral lessee, its agents, successors or assigns, shall not interfere with nor hinder the reasonable surface use by the Department of Natural Resources, its Offices or Commissions, as herein above reserved.

Applicant: DAY EXPLORATION

Bidder	Cash Payment	Price/ Acre	Rental	Oil	Gas	Other



0 2,500 Feet

P.O.B.

TERREBONNE

T20S - R12E

FOURLEAGUE BAY

Legend



19030013



LITTLE MOSQUITO BAYOU

MOSQUITO BAY

MOSQUITO BAYOU

T21S - R12E

TRACT 45104 - Terrebonne Parish, Louisiana

All of the lands now or formerly constituting the beds and bottoms of all water bodies of every nature and description as to which title is vested in the State of Louisiana, together with all islands arising therein and other lands formed by accretion or by reliction, where allowed by law, excepting tax adjudicated lands, and not presently under mineral lease on March 13, 2019, situated in Terrebonne Parish, Louisiana, and more particularly described as follows: Beginning at a point having Coordinates of X = 2,117,717.00 and Y = 235,620.00; thence East 12,383.00 feet to a point having Coordinates of X = 2,130,100.00 and Y = 235,620.00; thence South 8,900.00 feet to a point having Coordinates of X = 2,130,100.00 and Y = 226,720.00; thence West 12,383.00 feet to a point having Coordinates of X = 2,117,717.00 and Y = 226,720.00; thence North 8,900.00 feet to the point of beginning, containing approximately **2,404 acres**, all as more particularly outlined on a plat on file in the Office of Mineral Resources, Department of Natural Resources. All bearings, distances and coordinates are based on Louisiana Coordinate System of 1927, (North or South Zone), where applicable.

NOTE: The above description of the Tract nominated for lease has been provided and corrected, where required, exclusively by the nomination party. Any mineral lease selected from this Tract and awarded by the Louisiana State Mineral and Energy Board shall be without warranty of any kind, either express, implied, or statutory, including, but not limited to, the implied warranties of merchantability and fitness for a particular purpose. Should the mineral lease awarded by the Louisiana State Mineral and Energy Board be subsequently modified, cancelled or abrogated due to the existence of conflicting leases, operating agreements, private claims or other future obligations or conditions which may affect all or any portion of the leased Tract, it shall not relieve the Lessee of the obligation to pay any bonus due thereon to the Louisiana State Mineral and Energy Board, nor shall the Louisiana State Mineral and Energy Board be obligated to refund any consideration paid by the Lessor prior to such modification, cancellation, or abrogation, including, but not limited to, bonuses, rentals and royalties.

NOTE: The State of Louisiana does hereby reserve, and this lease shall be subject to, the imprescriptible right of surface use in the nature of a servitude in favor of the Department of Natural Resources, including its Offices and Commissions, for the sole purpose of implementing, constructing, servicing and maintaining approved coastal zone management and/or restoration projects. Utilization of any and all rights derived under this lease by the mineral lessee, its agents, successors or assigns, shall not interfere with nor hinder the reasonable surface use by the Department of Natural Resources, its Offices or Commissions, as herein above reserved.

NOTE: This tract is located in an area designated by the Louisiana Legislature or the Wildlife and Fisheries Commission as a Public Oyster Seed Ground or Reservation. Surface activity within the boundaries of these designated Public Oyster Seed Grounds or Reservations is prohibited.

Applicant: DAY EXPLORATION

Bidder	Cash Payment	Price/ Acre	Rental	Oil	Gas	Other



0 2,000 Feet

Legend



19030020

TERREBONNE

P.O.B.

MUD LAKE

LAKE MECHANT

TRACT 45105 - Terrebonne Parish, Louisiana

All of the lands now or formerly constituting the beds and bottoms of all water bodies of every nature and description as to which title is vested in the State of Louisiana, together with all islands arising therein and other lands formed by accretion or by reliction, where allowed by law, excepting tax adjudicated lands, and not presently under mineral lease on March 13, 2019, situated in Terrebonne Parish, Louisiana, and more particularly described as follows: Beginning at a point having Coordinates of X = 2,052,100.00 and Y = 232,462.00; thence East 18,480.00 feet to a point having Coordinates of X = 2,070,580.00 and Y = 232,462.00; thence South 5,989.00 feet to a point having Coordinates of X = 2,070,580.00 and Y = 226,473.00; thence West 18,480.00 feet to a point having Coordinates of X = 2,052,100.00 and Y = 226,473.00; thence North 5,989.00 feet to the point of beginning, containing approximately **2,190 acres**, all as more particularly outlined on a plat on file in the Office of Mineral Resources, Department of Natural Resources. All bearings, distances and coordinates are based on Louisiana Coordinate System of 1927, (North or South Zone), where applicable.

NOTE: The above description of the Tract nominated for lease has been provided and corrected, where required, exclusively by the nomination party. Any mineral lease selected from this Tract and awarded by the Louisiana State Mineral and Energy Board shall be without warranty of any kind, either express, implied, or statutory, including, but not limited to, the implied warranties of merchantability and fitness for a particular purpose. Should the mineral lease awarded by the Louisiana State Mineral and Energy Board be subsequently modified, cancelled or abrogated due to the existence of conflicting leases, operating agreements, private claims or other future obligations or conditions which may affect all or any portion of the leased Tract, it shall not relieve the Lessee of the obligation to pay any bonus due thereon to the Louisiana State Mineral and Energy Board, nor shall the Louisiana State Mineral and Energy Board be obligated to refund any consideration paid by the Lessor prior to such modification, cancellation, or abrogation, including, but not limited to, bonuses, rentals and royalties.

NOTE: The State of Louisiana does hereby reserve, and this lease shall be subject to, the imprescriptible right of surface use in the nature of a servitude in favor of the Department of Natural Resources, including its Offices and Commissions, for the sole purpose of implementing, constructing, servicing and maintaining approved coastal zone management and/or restoration projects. Utilization of any and all rights derived under this lease by the mineral lessee, its agents, successors or assigns, shall not interfere with nor hinder the reasonable surface use by the Department of Natural Resources, its Offices or Commissions, as herein above reserved.

Applicant: DAY EXPLORATION

Bidder	Cash Payment	Price/ Acre	Rental	Oil	Gas	Other



0 2,500 Feet

Legend



19030014

TERREBONNE

T20S - R13E

P.O.B.

T20S - R12E

BLUE HAMMOCK BAYOU

FOURLEAGUE BAY

TRACT 45106 - Terrebonne Parish, Louisiana

All of the lands now or formerly constituting the beds and bottoms of all water bodies of every nature and description as to which title is vested in the State of Louisiana, together with all islands arising therein and other lands formed by accretion or by reliction, where allowed by law, excepting tax adjudicated lands, and not presently under mineral lease on March 13, 2019, situated in Terrebonne Parish, Louisiana, and more particularly described as follows: Beginning at a point having Coordinates of X = 2,088,136.00 and Y = 231,064.00; thence East 18,480.00 feet to a point having Coordinates of X = 2,106,616.00 and Y = 231,064.00; thence South 3,095.00 feet to a point on the north boundary of Operating Agreement A0383 having Coordinates of X = 2,106,616.00 and Y = 227,969.00; thence along the boundaries of said Operating Agreement A0383 the following courses: South 47 degrees 43 minutes 13 seconds West 1,921.96 feet to a point having Coordinates of X = 2,105,194.00 and Y = 226,676.00 and South 43 degrees 33 minutes 37 seconds West 2,645.42 feet to its Northwest corner having Coordinates of X = 2,103,371.00 and Y = 224,759.00 and the Northeast corner of State Lease No. 21677; thence along the boundaries of said State Lease No. 21677 the following courses: South 36 degrees 51 minutes 46 seconds West 1,608.60 feet to a point having Coordinates of X = 2,102,406.00 and Y = 223,472.00 and South 52 degrees 27 minutes 09 seconds West 481.64 feet to its Northwest corner having Coordinates of X = 2,102,024.14 and Y = 223,178.48 and the Northeast corner of State Lease No. 21676; thence along the boundaries of said State Lease No. 21676 the following courses: South 52 degrees 27 minutes 09 seconds West 1,851.73 feet to a point having Coordinates of X = 2,100,556.00 and Y = 222,050.00, South 53 degrees 39 minutes 46 seconds West 1,032.85 feet to a point having Coordinates of X = 2,099,724.00 and Y = 221,438.00, South 44 degrees 55 minutes 52 seconds East 1,178.04 feet to a point having Coordinates of X = 2,100,556.00 and Y = 220,604.00, South 58 degrees 24 minutes 37 seconds East 847.60 feet to a point having Coordinates of X = 2,101,278.00 and Y = 220,160.00, South 78 degrees 36 minutes 39 seconds East 283.58 feet to a point having Coordinates of X = 2,101,556.00 and Y = 220,104.00 and North 44 degrees 21 minutes 56 seconds East 669.50 feet to its Southeast corner having Coordinates of X = 2,102,024.14 and Y = 220,582.62 and the Southwest corner of said State Lease No. 21677; thence along the boundaries of said State Lease No. 21677 the following courses: North 44 degrees 21 minutes 56 seconds East 1,118.18 feet to a point having Coordinates of X = 2,102,806.00 and Y = 221,382.00, North 47 degrees 31 minutes 18 seconds East 1,317.91 feet to a point having Coordinates of X = 2,103,778.00 and Y = 222,272.00, North 61 degrees 16 minutes 06 seconds East 1,963.78 feet to a point having Coordinates of X = 2,105,500.00 and Y = 223,216.00, North 72 degrees 33 minutes 32 seconds East 1,020.94 feet to a point having Coordinates of X = 2,106,474.00 and Y = 223,522.00 and North 81 degrees 01 minute 21 seconds East 143.76 feet to a point having Coordinates of X = 2,106,616.00 and Y = 223,544.43; thence South 9,936.44 feet to a point having Coordinates of X = 2,106,616.00 and Y = 213,608.00; thence West 18,480.00 feet to a point having Coordinates of X = 2,088,136.00 and Y = 213,608.00; thence North 17,456.00 feet to the point of beginning, containing approximately **2,115 acres**, all as more particularly

outlined on a plat on file in the Office of Mineral Resources, Department of Natural Resources. All bearings, distances and coordinates are based on Louisiana Coordinate System of 1927, (North or South Zone), where applicable.

NOTE: The above description of the Tract nominated for lease has been provided and corrected, where required, exclusively by the nomination party. Any mineral lease selected from this Tract and awarded by the Louisiana State Mineral and Energy Board shall be without warranty of any kind, either express, implied, or statutory, including, but not limited to, the implied warranties of merchantability and fitness for a particular purpose. Should the mineral lease awarded by the Louisiana State Mineral and Energy Board be subsequently modified, cancelled or abrogated due to the existence of conflicting leases, operating agreements, private claims or other future obligations or conditions which may affect all or any portion of the leased Tract, it shall not relieve the Lessee of the obligation to pay any bonus due thereon to the Louisiana State Mineral and Energy Board, nor shall the Louisiana State Mineral and Energy Board be obligated to refund any consideration paid by the Lessor prior to such modification, cancellation, or abrogation, including, but not limited to, bonuses, rentals and royalties.

NOTE: The State of Louisiana does hereby reserve, and this lease shall be subject to, the imprescriptible right of surface use in the nature of a servitude in favor of the Department of Natural Resources, including its Offices and Commissions, for the sole purpose of implementing, constructing, servicing and maintaining approved coastal zone management and/or restoration projects. Utilization of any and all rights derived under this lease by the mineral lessee, its agents, successors or assigns, shall not interfere with nor hinder the reasonable surface use by the Department of Natural Resources, its Offices or Commissions, as herein above reserved.

NOTE: This tract is located in an area designated by the Louisiana Legislature or the Wildlife and Fisheries Commission as a Public Oyster Seed Ground or Reservation. Surface activity within the boundaries of these designated Public Oyster Seed Grounds or Reservations is prohibited.

Applicant: DAY EXPLORATION

Bidder	Cash Payment	Price/ Acre	Rental	Oil	Gas	Other



0 2,500 Feet

Legend



19030023

Active_Leases

TERREBONNE

T20S - R14E

LAKE MECHANT

P.O.B.

A0383

BAYOU NEW ROUTE

SL 21677

SL 21676

FIDDLERS LAKE

BAY JUNOP

T21S - R14E

MUDHOLE BAY

TRACT 45107 - Terrebonne Parish, Louisiana

All of the lands now or formerly constituting the beds and bottoms of all water bodies of every nature and description as to which title is vested in the State of Louisiana, together with all islands arising therein and other lands formed by accretion or by reliction, where allowed by law, excepting tax adjudicated lands, and not presently under mineral lease on March 13, 2019, situated in Terrebonne Parish, Louisiana, and more particularly described as follows: Beginning at a point having Coordinates of X = 2,106,616.00 and Y = 231,120.00; thence East 11,101.00 feet to a point having Coordinates of X = 2,117,717.00 and Y = 231,120.00; thence South 17,512.00 feet to a point having Coordinates of X = 2,117,717.00 and Y = 213,608.00; thence West 11,101.00 feet to a point having Coordinates of X = 2,106,616.00 and Y = 213,608.00; thence North 9,936.43 feet to a point on the south boundary of State Lease No. 21677 having Coordinates of X = 2,106,616.00 and Y = 223,544.43; thence North 81 degrees 01 minute 21 seconds East 477.85 feet along the south boundary of said State Lease No. 21677 to its Southeast corner having Coordinates of X = 2,107,088.00 and Y = 223,619.00 and the Southwest corner of Operating Agreement A0383; thence along the boundaries of said Operating Agreement A0383 the following courses: North 73 degrees 15 minutes 34 seconds East 1,732.42 feet to a point having Coordinates of X = 2,108,747.00 and Y = 224,118.00, North 71 degrees 28 minutes 29 seconds East 1,806.61 feet to a point having Coordinates of X = 2,110,460.00 and Y = 224,692.00, North 62 degrees 34 minutes 07 seconds East 1,272.02 feet to a point having Coordinates of X = 2,111,589.00 and Y = 225,278.00, North 66 degrees 09 minutes 52 seconds East 1,509.62 feet to a point having Coordinates of X = 2,112,969.86 and Y = 225,888.05, North 66 degrees 09 minutes 52 seconds East 734.81 feet to a point having Coordinates of X = 2,113,642.00 and Y = 226,185.00, North 60 degrees 16 minutes 01 seconds East 1,788.46 feet to a point having Coordinates of X = 2,115,195.00 and Y = 227,072.00, North 40 degrees 21 minutes 27 seconds East 1,249.31 feet to a point having Coordinates of X = 2,116,004.00 and Y = 228,024.00, North 02 degrees 07 minutes 22 seconds East 1,268.87 feet to a point having Coordinates of X = 2,116,051.00 and Y = 229,292.00, North 75 degrees 53 minutes 16 seconds West 2,009.65 feet to a point having Coordinates of X = 2,114,102.00 and Y = 229,782.00, South 87 degrees 58 minutes 45 seconds West 1,132.84 feet to a point having Coordinates of X = 2,112,969.86 and Y = 229,742.05; thence South 87 degrees 58 minutes 45 seconds West 199.99 feet to a point having Coordinates of X = 2,112,770.00 and Y = 229,735.00, South 84 degrees 28 minutes 55 seconds West 2,308.70 feet to a point having Coordinates of X = 2,110,472.00 and Y = 229,513.00, South 71 degrees 58 minutes 49 seconds West 3,533.31 feet to a point having Coordinates of X = 2,107,112.00 and Y = 228,420.00 and South 47 degrees 43 minutes 13 seconds West 670.39 feet to a point having Coordinates of X = 2,088,136.00 and Y = 227,969.00; thence North 3,151.00 feet to the point of beginning, containing approximately **1,591 acres**, all as more particularly outlined on a plat on file in the Office of Mineral Resources, Department of Natural Resources. All bearings, distances and coordinates are based on Louisiana Coordinate System of 1927, (North or South Zone), where applicable.

NOTE: The above description of the Tract nominated for lease has been provided and corrected, where required, exclusively by the nomination party. Any mineral lease selected from this Tract and awarded by the Louisiana State Mineral and Energy Board shall be without warranty of any kind, either express, implied, or statutory, including, but not limited to, the implied warranties of merchantability and fitness for a particular purpose. Should the mineral lease awarded by the Louisiana State Mineral and Energy Board be subsequently modified, cancelled or abrogated due to the existence of conflicting leases, operating agreements, private claims or other future obligations or conditions which may affect all or any portion of the leased Tract, it shall not relieve the Lessee of the obligation to pay any bonus due thereon to the Louisiana State Mineral and Energy Board, nor shall the Louisiana State Mineral and Energy Board be obligated to refund any consideration paid by the Lessor prior to such modification, cancellation, or abrogation, including, but not limited to, bonuses, rentals and royalties.

NOTE: The State of Louisiana does hereby reserve, and this lease shall be subject to, the imprescriptible right of surface use in the nature of a servitude in favor of the Department of Natural Resources, including its Offices and Commissions, for the sole purpose of implementing, constructing, servicing and maintaining approved coastal zone management and/or restoration projects. Utilization of any and all rights derived under this lease by the mineral lessee, its agents, successors or assigns, shall not interfere with nor hinder the reasonable surface use by the Department of Natural Resources, its Offices or Commissions, as herein above reserved.

Applicant: DAY EXPLORATION

Bidder	Cash Payment	Price/ Acre	Rental	Oil	Gas	Other



0 2,500 Feet

Legend

19030022

Active_Leases

TERREBONNE

P.O.B.

LAKE MECHANT

T21S - R15E

KING LAKE

T20S - R14E

A0383

SL 21677

T21S - R14E

TRACT 45108 - Terrebonne Parish, Louisiana

All of the lands now or formerly constituting the beds and bottoms of all water bodies of every nature and description as to which title is vested in the State of Louisiana, together with all islands arising therein and other lands formed by accretion or by reliction, where allowed by law, excepting tax adjudicated lands, and not presently under mineral lease on March 13, 2019, situated in Terrebonne Parish, Louisiana, and more particularly described as follows: Beginning at a point having Coordinates of X = 2,052,100.00 and Y = 226,473.00; thence East 18,480.00 feet to a point having Coordinates of X = 2,070,580.00 and Y = 226,473.00; thence South 8,440.00 feet to a point having Coordinates of X = 2,070,580.00 and Y = 218,033.00; thence West 18,480.00 feet to a point having Coordinates of X = 2,052,100.00 and Y = 218,033.00; thence North 8,440.00 feet to the point of beginning, **LESS AND EXCEPT** all that portion of State Lease No. 21614 which lies entirely within the above described tract, being more fully described as follows: Commencing at a point being the point of beginning of the above described nominated tract having coordinates of X = 2,052,100.00 and Y = 226,473.00; thence South 72 degrees 35 minutes 45 seconds East 6,679.81 feet to the point of beginning of State Lease No. 21614 having Coordinates of X = 2,058,474.00 and Y = 224,475.00; thence along the boundaries of said State Lease No. 21614 the following courses: East 2,002.00 feet to a point having coordinates of X = 2,060,476.00 and Y = 224,475.00; thence South 65 degrees 29 minutes 36 seconds East 2,651.90 feet to a point having Coordinates of X = 2,062,889.00 and Y = 223,375.00; thence South 42 degrees 23 minutes 20 seconds East 869.23 feet to a point having Coordinates of X = 2,063,475.00 and Y = 222,733.00; thence South 973.00 feet to a point having Coordinates of X = 2,063,475.00 and Y = 221,760.00; thence South 89 degrees 17 minutes 36 seconds West 973.07 feet to a point having Coordinates of X = 2,062,502.00 and Y = 221,748.00; thence South 36 degrees 53 minutes 00 seconds West 1,702.80 feet to a point having Coordinates of X = 2,061,480.00 and Y = 220,386.00; thence West 1,548.00 feet to a point having Coordinates of X = 2,059,932.00 and Y = 220,386.00; thence North 65 degrees 07 minutes 51 seconds West 2,720.25 feet to a point having Coordinates of X = 2,057,464.00 and Y = 221,530.00; thence North 27 degrees 41 minutes 47 seconds West 860.61 feet to a point having Coordinates of X = 2,057,064.00 and Y = 222,292.00; thence North 59 degrees 32 minutes 49 seconds East 1,635.65 feet to a point having Coordinates of X = 2,058,474.00 and Y = 223,121.00; thence North 1,354.00 feet to the point of beginning. The above nominated tract contains approximately **2,451 acres**, all as more particularly outlined on a plat on file in the Office of Mineral Resources, Department of Natural Resources. All bearings, distances and coordinates are based on Louisiana Coordinate System of 1927, (North or South Zone), where applicable.

NOTE: The above description of the Tract nominated for lease has been provided and corrected, where required, exclusively by the nomination party. Any mineral lease selected from this Tract and awarded by the Louisiana State Mineral and Energy Board shall be without warranty of any kind, either express, implied, or statutory, including, but not limited to, the implied warranties of merchantability and fitness for a particular purpose. Should

the mineral lease awarded by the Louisiana State Mineral and Energy Board be subsequently modified, cancelled or abrogated due to the existence of conflicting leases, operating agreements, private claims or other future obligations or conditions which may affect all or any portion of the leased Tract, it shall not relieve the Lessee of the obligation to pay any bonus due thereon to the Louisiana State Mineral and Energy Board, nor shall the Louisiana State Mineral and Energy Board be obligated to refund any consideration paid by the Lessor prior to such modification, cancellation, or abrogation, including, but not limited to, bonuses, rentals and royalties.

NOTE: The State of Louisiana does hereby reserve, and this lease shall be subject to, the imprescriptible right of surface use in the nature of a servitude in favor of the Department of Natural Resources, including its Offices and Commissions, for the sole purpose of implementing, constructing, servicing and maintaining approved coastal zone management and/or restoration projects. Utilization of any and all rights derived under this lease by the mineral lessee, its agents, successors or assigns, shall not interfere with nor hinder the reasonable surface use by the Department of Natural Resources, its Offices or Commissions, as herein above reserved.

Applicant: DAY EXPLORATION

Bidder	Cash Payment	Price/ Acre	Rental	Oil	Gas	Other



Legend

19030015

Active_Leases

BLUE HAMMOCK BAYOU

T20S - R13E

T21S - R13E

TERREBONNE

SL 21614

FOURLEAGUE BAY

P.O.B.

T20S - R12E

T21S - R12E

TRACT 45109 - Terrebonne Parish, Louisiana

All of the lands now or formerly constituting the beds and bottoms of all water bodies of every nature and description as to which title is vested in the State of Louisiana, together with all islands arising therein and other lands formed by accretion or by reliction, where allowed by law, excepting tax adjudicated lands, and not presently under mineral lease on March 13, 2019, situated in Terrebonne Parish, Louisiana, and more particularly described as follows: Beginning at a point having Coordinates of X = 2,070,580.00 and Y = 226,964.00; thence East 17,556.00 feet to a point having Coordinates of X = 2,088,136.00 and Y = 226,964.00; thence South 17,241.00 feet to a point having Coordinates of X = 2,088,136.00 and Y = 209,723.00; thence West 17,556.00 feet to a point having Coordinates of X = 2,070,580.00 and Y = 209,723.00; thence North 17,241.00 feet to the point of beginning, containing approximately **1,303 acres**, all as more particularly outlined on a plat on file in the Office of Mineral Resources, Department of Natural Resources. All bearings, distances and coordinates are based on Louisiana Coordinate System of 1927, (North or South Zone), where applicable.

NOTE: The above description of the Tract nominated for lease has been provided and corrected, where required, exclusively by the nomination party. Any mineral lease selected from this Tract and awarded by the Louisiana State Mineral and Energy Board shall be without warranty of any kind, either express, implied, or statutory, including, but not limited to, the implied warranties of merchantability and fitness for a particular purpose. Should the mineral lease awarded by the Louisiana State Mineral and Energy Board be subsequently modified, cancelled or abrogated due to the existence of conflicting leases, operating agreements, private claims or other future obligations or conditions which may affect all or any portion of the leased Tract, it shall not relieve the Lessee of the obligation to pay any bonus due thereon to the Louisiana State Mineral and Energy Board, nor shall the Louisiana State Mineral and Energy Board be obligated to refund any consideration paid by the Lessor prior to such modification, cancellation, or abrogation, including, but not limited to, bonuses, rentals and royalties.

NOTE: The State of Louisiana does hereby reserve, and this lease shall be subject to, the imprescriptible right of surface use in the nature of a servitude in favor of the Department of Natural Resources, including its Offices and Commissions, for the sole purpose of implementing, constructing, servicing and maintaining approved coastal zone management and/or restoration projects. Utilization of any and all rights derived under this lease by the mineral lessee, its agents, successors or assigns, shall not interfere with nor hinder the reasonable surface use by the Department of Natural Resources, its Offices or Commissions, as herein above reserved.

NOTE: This tract is located in an area designated by the Louisiana Legislature or the Wildlife and Fisheries Commission as a Public Oyster Seed Ground or Reservation. Surface activity within the boundaries of these designated Public Oyster Seed Grounds or Reservations is prohibited.

Applicant: DAY EXPLORATION

Bidder	Cash Payment	Price/ Acre	Rental	Oil	Gas	Other



0 2,500 Feet

P.O.B.

BLUE HAMMOCK BAYOU

TERREBONNE

Legend



19030024

T20S - R14E

FIDDLERS LAKE

T21S - R14E

BAY JUNOP

OLD OYSTER BAYOU LAKE

T20S - R13E

T21S - R13E

OLD OYSTER BAYOU

TRACT 45110 - Terrebonne Parish, Louisiana

All of the lands now or formerly constituting the beds and bottoms of all water bodies of every nature and description as to which title is vested in the State of Louisiana, together with all islands arising therein and other lands formed by accretion or by reliction, where allowed by law, excepting tax adjudicated lands, and not presently under mineral lease on March 13, 2019, situated in Terrebonne Parish, Louisiana, and more particularly described as follows: Beginning at a point having Coordinates of X = 2,117,717.00 and Y = 226,720.00; thence East 12,383.00 feet to a point having Coordinates of X = 2,130,100.00 and Y = 226,720.00; thence South 10,700.00 feet to a point having Coordinates of X = 2,130,100.00 and Y = 216,020.00; thence West 12,383.00 feet to a point having Coordinates of X = 2,117,717.00 and Y = 216,020.00; thence North 10,700.00 feet to the point of beginning, **LESS AND EXCEPT** any portion of Terrebonne Land Development Corporation v. State Mineral Board legal area that may fall within the boundary of the above described tract, containing approximately **2,460 acres**, all as more particularly outlined on a plat on file in the Office of Mineral Resources, Department of Natural Resources. All bearings, distances and coordinates are based on Louisiana Coordinate System of 1927, (North or South Zone), where applicable.

NOTE: The above description of the Tract nominated for lease has been provided and corrected, where required, exclusively by the nomination party. Any mineral lease selected from this Tract and awarded by the Louisiana State Mineral and Energy Board shall be without warranty of any kind, either express, implied, or statutory, including, but not limited to, the implied warranties of merchantability and fitness for a particular purpose. Should the mineral lease awarded by the Louisiana State Mineral and Energy Board be subsequently modified, cancelled or abrogated due to the existence of conflicting leases, operating agreements, private claims or other future obligations or conditions which may affect all or any portion of the leased Tract, it shall not relieve the Lessee of the obligation to pay any bonus due thereon to the Louisiana State Mineral and Energy Board, nor shall the Louisiana State Mineral and Energy Board be obligated to refund any consideration paid by the Lessor prior to such modification, cancellation, or abrogation, including, but not limited to, bonuses, rentals and royalties.

NOTE: The State of Louisiana does hereby reserve, and this lease shall be subject to, the imprescriptible right of surface use in the nature of a servitude in favor of the Department of Natural Resources, including its Offices and Commissions, for the sole purpose of implementing, constructing, servicing and maintaining approved coastal zone management and/or restoration projects. Utilization of any and all rights derived under this lease by the mineral lessee, its agents, successors or assigns, shall not interfere with nor hinder the reasonable surface use by the Department of Natural Resources, its Offices or Commissions, as herein above reserved.

NOTE: This tract is located in an area designated by the Louisiana Legislature or the Wildlife and Fisheries Commission as a Public Oyster Seed

Ground or Reservation. Surface activity within the boundaries of these designated Public Oyster Seed Grounds or Reservations is prohibited.

Applicant: DAY EXPLORATION

Bidder	Cash Payment	Price/ Acre	Rental	Oil	Gas	Other



0 2,000 Feet

P.O.B.

Legend



19030021

TERREBONNE

LAKE MECHANT

MUD LAKE

BAYOU DU LARGE

T21S - R15E

GRAND PASS

CAILLOU LAKE

TRACT 45111 - Terrebonne Parish, Louisiana

All of the lands now or formerly constituting the beds and bottoms of all water bodies of every nature and description as to which title is vested in the State of Louisiana, together with all islands arising therein and other lands formed by accretion or by reliction, where allowed by law, excepting tax adjudicated lands, and not presently under mineral lease on March 13, 2019, situated in Terrebonne Parish, Louisiana, and more particularly described as follows: Beginning at a point having Coordinates of X = 2,036,100.00 and Y = 219,723.00; thence East 16,000.00 feet to a point having Coordinates of X = 2,052,100.00 and Y = 219,723.00; thence South 10,000.00 feet to a point having Coordinates of X = 2,052,100.00 and Y = 209,723.00; thence West 16,000.00 feet to a point having Coordinates of X = 2,036,100.00 and Y = 209,723.00; thence North 10,000.00 feet to the point of beginning, containing approximately **621 acres**, all as more particularly outlined on a plat on file in the Office of Mineral Resources, Department of Natural Resources. All bearings, distances and coordinates are based on Louisiana Coordinate System of 1927, (North or South Zone), where applicable.

NOTE: The above description of the Tract nominated for lease has been provided and corrected, where required, exclusively by the nomination party. Any mineral lease selected from this Tract and awarded by the Louisiana State Mineral and Energy Board shall be without warranty of any kind, either express, implied, or statutory, including, but not limited to, the implied warranties of merchantability and fitness for a particular purpose. Should the mineral lease awarded by the Louisiana State Mineral and Energy Board be subsequently modified, cancelled or abrogated due to the existence of conflicting leases, operating agreements, private claims or other future obligations or conditions which may affect all or any portion of the leased Tract, it shall not relieve the Lessee of the obligation to pay any bonus due thereon to the Louisiana State Mineral and Energy Board, nor shall the Louisiana State Mineral and Energy Board be obligated to refund any consideration paid by the Lessor prior to such modification, cancellation, or abrogation, including, but not limited to, bonuses, rentals and royalties.

NOTE: The State of Louisiana does hereby reserve, and this lease shall be subject to, the imprescriptible right of surface use in the nature of a servitude in favor of the Department of Natural Resources, including its Offices and Commissions, for the sole purpose of implementing, constructing, servicing and maintaining approved coastal zone management and/or restoration projects. Utilization of any and all rights derived under this lease by the mineral lessee, its agents, successors or assigns, shall not interfere with nor hinder the reasonable surface use by the Department of Natural Resources, its Offices or Commissions, as herein above reserved.

Applicant: DAY EXPLORATION

Bidder	Cash Payment	Price/ Acre	Rental	Oil	Gas	Other



0 2,500 Feet

Legend



19030026

TERREBONNE

T20S - R12E

LITTLE MOSQUITO BAYOU

MOSQUITO BAY

MOSQUITO BAYOU

P.O.B.

FOURLEAGUE BAY

T21S - R12E