

TRACT 45082 - Webster Parish, Louisiana

All of the lands now or formerly constituting the beds and bottoms of all water bodies of every nature and description as to which title is vested in the State of Louisiana, together with all islands arising therein and other lands formed by accretion or by reliction, where allowed by law, excepting tax adjudicated lands, and not presently under mineral lease on March 13, 2019, situated in Webster Parish, Louisiana, and more particularly described as follows: Beginning at a point being the Northeast corner of State Lease No. 19542 having Coordinates of X = 1,725,800.00 and Y = 646,400.00; thence North 10,100.89 feet to a point having Coordinates of X = 1,725,800.00 and Y = 656,500.89; thence East, a distance 15,428.60 feet to a point having Coordinates of X = 1,741,228.60 and Y = 656,500.90; thence South 00 degrees 21 minutes 45 seconds West 10,101.09 feet to a point having Coordinates of X = 1,741,164.68 and Y = 646,400.01; thence West 15,364.68 feet to the point of beginning, (This tract includes only waterbottoms claimed and owned by the state and specifically excludes any land which the state or Wildlife and Fisheries may claim or own and to which the mineral rights are vested in them), containing approximately **1,163 acres**, all as more particularly outlined on a plat on file in the Office of Mineral Resources, Department of Natural Resources. All bearings, distances and coordinates are based on Louisiana Coordinate System of 1927, (North or South Zone), where applicable.

NOTE: The above description of the Tract nominated for lease has been provided and corrected, where required, exclusively by the nomination party. Any mineral lease selected from this Tract and awarded by the Louisiana State Mineral and Energy Board shall be without warranty of any kind, either express, implied, or statutory, including, but not limited to, the implied warranties of merchantability and fitness for a particular purpose. Should the mineral lease awarded by the Louisiana State Mineral and Energy Board be subsequently modified, cancelled or abrogated due to the existence of conflicting leases, operating agreements, private claims or other future obligations or conditions which may affect all or any portion of the leased Tract, it shall not relieve the Lessee of the obligation to pay any bonus due thereon to the Louisiana State Mineral and Energy Board, nor shall the Louisiana State Mineral and Energy Board be obligated to refund any consideration paid by the Lessor prior to such modification, cancellation, or abrogation, including, but not limited to, bonuses, rentals and royalties.

NOTE: Bidders are hereby advised that certain areas in Lake Bistineau are the subject of dual claims to mineral ownership or mineral rights to certain accreted lands by the federal government and, therefore, title to such accreted lands is in dispute. Any bids accepted by the state mineral board which result in a state mineral lease being given places the successful bidder on notice that the State's title to that acreage, whether the whole or a part of the lease awarded, may be challenged. Accordingly, all leases awarded by the state mineral board are without warranty of any kind, either express, implied, or statutory, including, but not limited to merchantability and fitness for a particular purpose. Should the awarded lease be subsequently modified, cancelled, or abrogated in any way as a result of the

above mentioned or any other challenge, or conflicting private claims which affect or may affect all or any portion of the leased tract, the successful bidder/Lessee, their successors, or assigns shall not be relieved of the obligation to pay any monies due prior to the modification, cancellation, or abrogation, including, but not limited to, bonus, rental and royalty, nor shall the State be obligated to refund those monies paid.

Applicant: MCGINTY-DURHAM, INC.

Bidder	Cash Payment	Price/Acre	Rental	Oil	Gas	Other



0 2,500 Feet

Legend

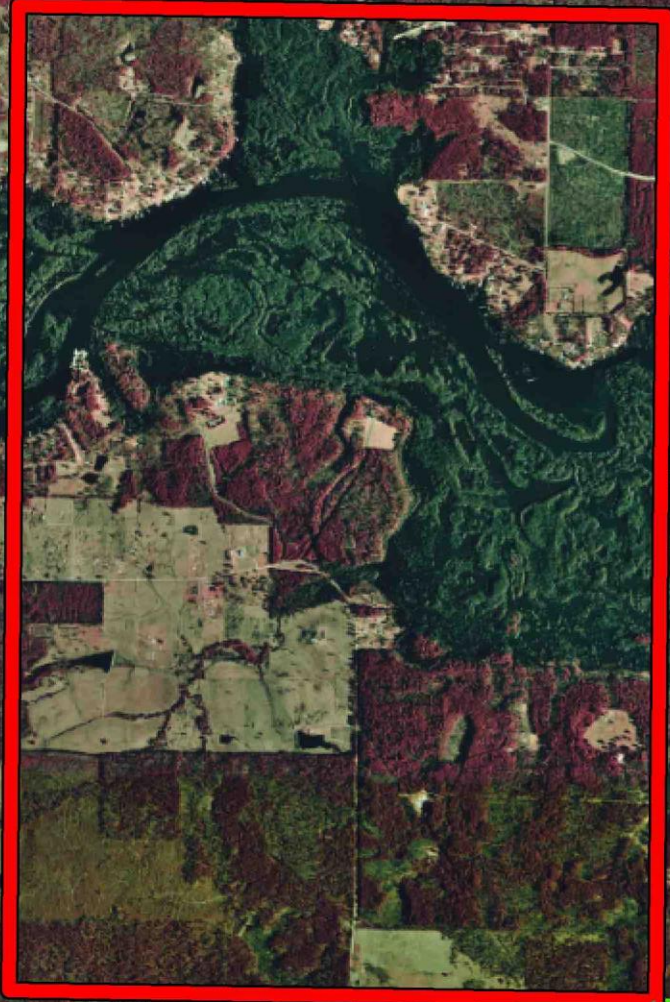


19030043

Active_Leases

WEBSTER

T17N - R9W



LAKE BISTINEAU

T17N - R10W

P.O.B.

SL 19542

TRACT 45083 - Webster Parish, Louisiana

All of the lands now or formerly constituting the beds and bottoms of all water bodies of every nature and description as to which title is vested in the State of Louisiana, together with all islands arising therein and other lands formed by accretion or by reliction, where allowed by law, excepting tax adjudicated lands, and not presently under mineral lease on March 13, 2019, situated in Webster Parish, Louisiana, and more particularly described as follows: Beginning at a point being the Northwest corner of State Lease No. 19542 having Coordinates of X = 1,720,000.00 and Y = 646,400.00; thence North 4,790.00 feet to a point having Coordinates of X = 1,720,000.00 and Y = 651,190.00; thence East 5,800.00 feet to a point having Coordinates of X = 1,725,800.00 and Y = 651,190.00; thence South 4,790.00 feet to the Northeast corner of State Lease No. 19542, having Coordinates of X = 1,725,800.00 and Y = 646,400.00; thence West 5,800.00 feet along the North line of State Lease No. 19542 to the point of beginning, (This tract includes only waterbottoms claimed and owned by the state and specifically excludes any land which the state or Wildlife and Fisheries may claim or own and to which the mineral rights are vested in them), containing approximately **56 acres**, all as more particularly outlined on a plat on file in the Office of Mineral Resources, Department of Natural Resources. All bearings, distances and coordinates are based on Louisiana Coordinate System of 1927, (North or South Zone), where applicable.

NOTE: The above description of the Tract nominated for lease has been provided and corrected, where required, exclusively by the nomination party. Any mineral lease selected from this Tract and awarded by the Louisiana State Mineral and Energy Board shall be without warranty of any kind, either express, implied, or statutory, including, but not limited to, the implied warranties of merchantability and fitness for a particular purpose. Should the mineral lease awarded by the Louisiana State Mineral and Energy Board be subsequently modified, cancelled or abrogated due to the existence of conflicting leases, operating agreements, private claims or other future obligations or conditions which may affect all or any portion of the leased Tract, it shall not relieve the Lessee of the obligation to pay any bonus due thereon to the Louisiana State Mineral and Energy Board, nor shall the Louisiana State Mineral and Energy Board be obligated to refund any consideration paid by the Lessor prior to such modification, cancellation, or abrogation, including, but not limited to, bonuses, rentals and royalties.

NOTE: Bidders are hereby advised that certain areas in Lake Bistineau are the subject of dual claims to mineral ownership or mineral rights to certain accreted lands by the federal government and, therefore, title to such accreted lands is in dispute. Any bids accepted by the state mineral board which result in a state mineral lease being given places the successful bidder on notice that the State's title to that acreage, whether the whole or a part of the lease awarded, may be challenged. Accordingly, all leases awarded by the state mineral board are without warranty of any kind, either express, implied, or statutory, including, but not limited to merchantability and fitness for a particular purpose. Should the awarded lease be

subsequently modified, cancelled, or abrogated in any way as a result of the above mentioned or any other challenge, or conflicting private claims which affect or may affect all or any portion of the leased tract, the successful bidder/Lessee, their successors, or assigns shall not be relieved of the obligation to pay any monies due prior to the modification, cancellation, or abrogation, including, but not limited to, bonus, rental and royalty, nor shall the State be obligated to refund those monies paid.

Applicant: MCGINTY-DURHAM, INC.

Bidder	Cash Payment	Price/Acre	Rental	Oil	Gas	Other



0 2,000 Feet

Legend



19030044

Active_Leases

WEBSTER



LAKE BISTINEAU

SL 19542

T17N - R10W

P.O.B.

TRACT 45084 - Bienville and Webster Parishes, Louisiana

All of the lands now or formerly constituting the beds and bottoms of all water bodies of every nature and description as to which title is vested in the State of Louisiana, together with all islands arising therein and other lands formed by accretion or by reliction, where allowed by law, excepting tax adjudicated lands, and not presently under mineral lease on March 13, 2019, situated in Bienville and Webster Parishes, Louisiana, and more particularly described as follows: Beginning at a point being the Northeast Corner of State Lease No. 19542 having Coordinates of X = 1,725,800.00 and Y = 646,400.00; thence East 15,364.68 feet to a point having Coordinates of X = 1,741,164.68 and Y = 646,400.01; thence South 00 degrees 46 minutes 13 seconds West 11,327.93 feet to a point having Coordinates of X = 1,741,012.41 and Y = 635,073.10; thence North 89 degrees 03 minutes 23 seconds West 16,852.01 feet to a point having Coordinates of X = 1,724,162.69 and Y = 635,350.67; thence North 00 degrees 56 minutes 38 seconds East, 5,050.02 feet to a point on the South line of said State Lease No. 19542 having Coordinates of X = 1,724,245.87 and Y = 640,400.00; thence East 1,554.13 feet along the South line of said State Lease No. 19542 to the Southeast Corner of State Lease No. 19542 having Coordinates of X = 1,725,800.00 and Y = 640,400.00; thence North 6,000.00 feet along the East line of said State Lease No. 19542 back to the point of beginning, **LESS AND EXCEPT** Dried Lake Beds sold prior to 1921 located in the West Half of the Northeast Quarter and the Southwest Quarter of Section 26, Township 17 North Range 10 West, (This tract includes only waterbottoms claimed and owned by the state and specifically excludes any land which the state or Wildlife and Fisheries may claim or own and to which the mineral rights are vested in them). The above described tract contains approximately **2,174 acres**, all as more particularly outlined on a plat on file in the Office of Mineral Resources, Department of Natural Resources. All bearings, distances and coordinates are based on Louisiana Coordinate System of 1927, (North or South Zone), where applicable.

NOTE: The above description of the Tract nominated for lease has been provided and corrected, where required, exclusively by the nomination party. Any mineral lease selected from this Tract and awarded by the Louisiana State Mineral and Energy Board shall be without warranty of any kind, either express, implied, or statutory, including, but not limited to, the implied warranties of merchantability and fitness for a particular purpose. Should the mineral lease awarded by the Louisiana State Mineral and Energy Board be subsequently modified, cancelled or abrogated due to the existence of conflicting leases, operating agreements, private claims or other future obligations or conditions which may affect all or any portion of the leased Tract, it shall not relieve the Lessee of the obligation to pay any bonus due thereon to the Louisiana State Mineral and Energy Board, nor shall the Louisiana State Mineral and Energy Board be obligated to refund any consideration paid by the Lessor prior to such modification, cancellation, or abrogation, including, but not limited to, bonuses, rentals and royalties.

NOTE: Bidders are hereby advised that certain areas in Lake Bistineau are the subject of dual claims to mineral ownership or mineral rights to certain

accreted lands by the federal government and, therefore, title to such accreted lands is in dispute. Any bids accepted by the state mineral board which result in a state mineral lease being given places the successful bidder on notice that the State's title to that acreage, whether the whole or a part of the lease awarded, may be challenged. Accordingly, all leases awarded by the state mineral board are without warranty of any kind, either express, implied, or statutory, including, but not limited to merchantability and fitness for a particular purpose. Should the awarded lease be subsequently modified, cancelled, or abrogated in any way as a result of the above mentioned or any other challenge, or conflicting private claims which affect or may affect all or any portion of the leased tract, the successful bidder/Lessee, their successors, or assigns shall not be relieved of the obligation to pay any monies due prior to the modification, cancellation, or abrogation, including, but not limited to, bonus, rental and royalty, nor shall the State be obligated to refund those monies paid.

Applicant: MCGINTY-DURHAM, INC.

Bidder	Cash Payment	Price/Acre	Rental	Oil	Gas	Other



0 2,500 Feet

Legend

- 19030042 (Red outline)
- Active_Leases (Green dashed outline)
- Counties (Yellow outline)
- Dried Lake Bed (Purple hatched pattern)

WEBSTER

P.O.B.

SL 19542

T17N - R10W

T17N - R9W

BOSSIER

LAKE BISTINEAU

BIENVILLE

T16N - R10W

T16N - R9W

TRACT 45085 - Bienville Bossier and Webster Parishes, Louisiana

All of the lands now or formerly constituting the beds and bottoms of all water bodies of every nature and description as to which title is vested in the State of Louisiana, together with all islands arising therein and other lands formed by accretion or by reliction, where allowed by law, excepting tax adjudicated lands, and not presently under mineral lease on March 13, 2019, situated in Bienville Bossier and Webster Parishes, Louisiana, and more particularly described as follows: Beginning at a point being the Southeast Corner of State Lease No. 18181, having Coordinates of X = 1,719,781.27 and Y = 629,934.28; thence North 06 degrees 47 minutes 36 seconds East, 3,403.33 feet along the East line of said State Lease No. 18181 to a point having Coordinates of X = 1,720,183.85 and Y = 633,313.72; thence North 00 degrees 17 minutes 42 seconds East 2,092.48 feet along the East line of said State Lease No. 18181 to its Northeast Corner having Coordinates of X = 1,720,194.63 and Y = 635,406.17; thence North 89 degrees 27 minutes 06 seconds West 1,590.68 feet along the North line of said State Lease No. 18181 to its intersection with the South line of State Lease No. 16531 having Coordinates of X = 1,718,604.02 and Y = 635,421.39; thence South 89 degrees 41 minutes 10 seconds East 1,508.58 feet along said South line of State Lease No. 16531 to a point having Coordinates of X = 1,720,112.58 and Y = 635,413.13; thence South 89 degrees 41 minutes 10 seconds East 387.43 feet along said South line of State Lease No. 16531 to its Southeast Corner having Coordinates of X = 1,720,500.00 and Y = 635,411.01; thence South 89 degrees 03 minutes 22 seconds East 15,254.76 feet to a point having Coordinates of X = 1,735,752.69 and Y = 635,159.74; thence South 00 degrees 59 minutes 32 seconds West 5,355.15 feet to a point having Coordinates of X = 1,735,659.95 and Y = 629,805.40; thence North 89 degrees 29 minutes 47 seconds West 5,210.15 feet to a point being the Northeast Corner of State Lease No. 20273 having Coordinates of X = 1,730,450.00 and Y = 629,851.19; thence South 90 degrees 00 minutes 00 seconds West 16.19 feet along the North line of said State Lease No. 20273 to a point having Coordinates of X = 1,730,433.81 and Y = 629,851.19; thence North 89 degrees 06 minutes 51 seconds West 1,307.30 feet along the North line of said State Lease No. 20273 to a point having Coordinates of X = 1,729,126.67 and Y = 629,871.40; thence North 89 degrees 25 minutes 58 seconds West 3,983.86 feet along the North line of said State Lease No. 20273 to its Northwest Corner having Coordinates of X = 1,725,143.01 and Y = 629,910.84; thence North 89 degrees 44 minutes 58 seconds West 5,361.79 feet back to the point of beginning, (This tract includes only waterbottoms claimed and owned by the state and specifically excludes any land which the state may claim or own and to which the mineral rights are vested in the state), containing approximately **921 acres**, all as more particularly outlined on a plat on file in the Office of Mineral Resources, Department of Natural Resources. All bearings, distances and coordinates are based on Louisiana Coordinate System of 1927, (North or South Zone), where applicable.

NOTE: The above description of the Tract nominated for lease has been provided and corrected, where required, exclusively by the nomination party. Any mineral lease selected from this Tract and awarded by the Louisiana State

Mineral and Energy Board shall be without warranty of any kind, either express, implied, or statutory, including, but not limited to, the implied warranties of merchantability and fitness for a particular purpose. Should the mineral lease awarded by the Louisiana State Mineral and Energy Board be subsequently modified, cancelled or abrogated due to the existence of conflicting leases, operating agreements, private claims or other future obligations or conditions which may affect all or any portion of the leased Tract, it shall not relieve the Lessee of the obligation to pay any bonus due thereon to the Louisiana State Mineral and Energy Board, nor shall the Louisiana State Mineral and Energy Board be obligated to refund any consideration paid by the Lessor prior to such modification, cancellation, or abrogation, including, but not limited to, bonuses, rentals and royalties.

NOTE: This tract encompasses an area beneath which is located on the Bistineau Gas Storage Pool in the Sligo formation of the Pettet Porosity. Accordingly, any mineral related activity, including, but not limited to, the exploration and drilling for, and the production and storage of oil, gas and other liquid or gaseous minerals, conducted under a valid mineral lease which may be obtained from the State, shall be subject to any statewide orders issued by the Louisiana Office of Conservation pertinent to conducting such operations in this area and upon this tract, including particularly, but not limited to, the following: Order Nos. 287, 287-A, 287-A-1, 287-B, Supplement to 287-B, 287-B-1, 287-B-2, 287-B-3, and 287-B-4. The successful bidder on this tract shall contact the operator of the Bistineau Gas Storage Pool and the Office of Conservation prior to initiating and conducting any of the aforementioned activity hereon.

NOTE: Bidders are hereby advised that certain areas in Lake Bistineau are the subject of dual claims to mineral ownership or mineral rights to certain accreted lands by the federal government and, therefore, title to such accreted lands is in dispute. Any bids accepted by the state mineral board which result in a state mineral lease being given places the successful bidder on notice that the State's title to that acreage, whether the whole or a part of the lease awarded, may be challenged. Accordingly, all leases awarded by the state mineral board are without warranty of any kind, either express, implied, or statutory, including, but not limited to merchantability and fitness for a particular purpose. Should the awarded lease be subsequently modified, cancelled, or abrogated in any way as a result of the above mentioned or any other challenge, or conflicting private claims which affect or may affect all or any portion of the leased tract, the successful bidder/Lessee, their successors, or assigns shall not be relieved of the obligation to pay any monies due prior to the modification, cancellation, or abrogation, including, but not limited to, bonus, rental and royalty, nor shall the State be obligated to refund those monies paid.

Applicant: MCGINTY-DURHAM, INC.

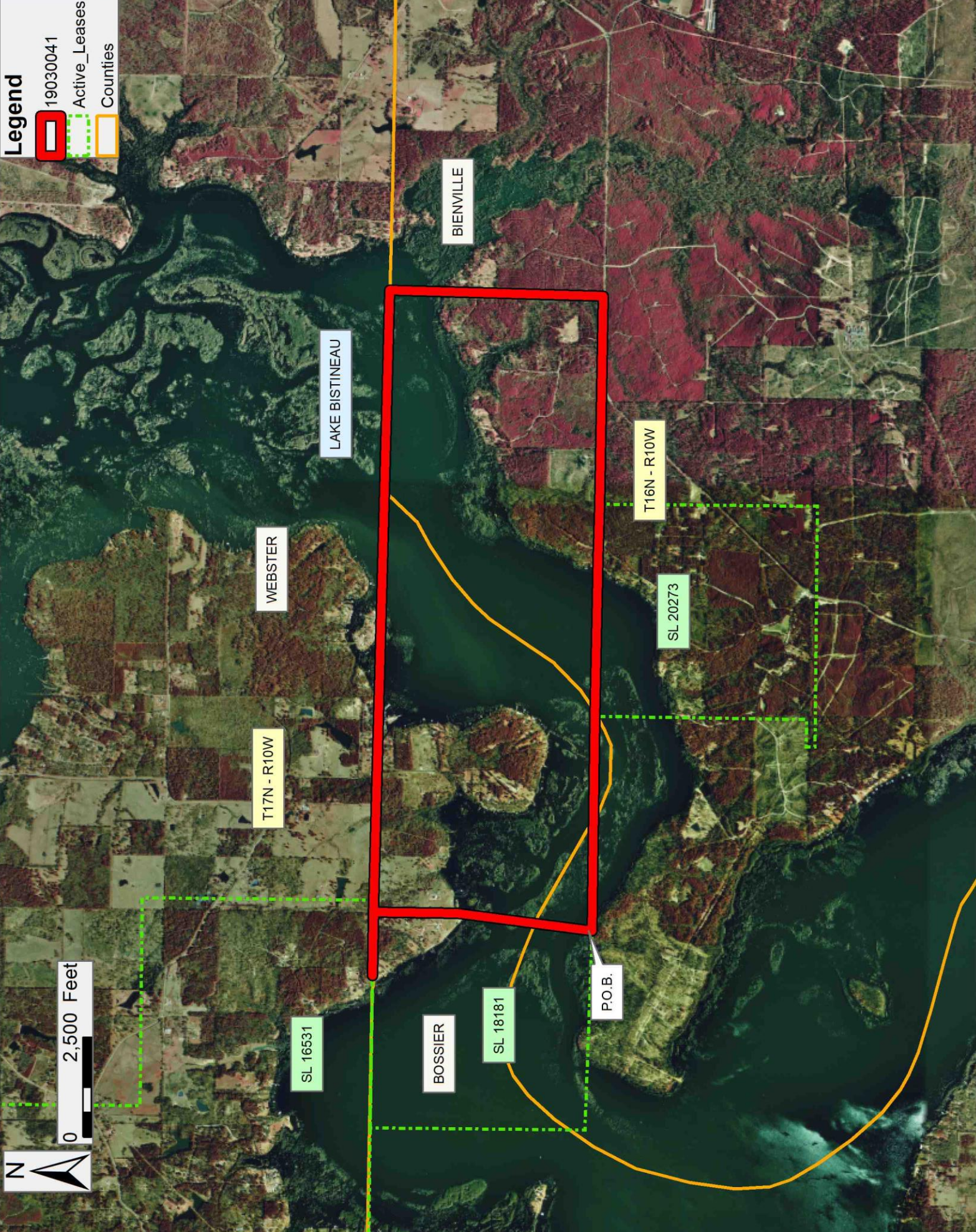
Bidder	Cash Payment	Price/ Acre	Rental	Oil	Gas	Other



0 2,500 Feet

Legend

- 19030041
- Active_Leases
- Counties



Office of Mineral Resources, Acres: 921 Tract Number: 45085

TRACT 45086 - Bienville and Bossier Parishes, Louisiana

All of the lands now or formerly constituting the beds and bottoms of all water bodies of every nature and description as to which title is vested in the State of Louisiana, together with all islands arising therein and other lands formed by accretion or by reliction, where allowed by law, excepting tax adjudicated lands, and not presently under mineral lease on March 13, 2019, situated in Bienville and Bossier Parishes, Louisiana, and more particularly described as follows: Beginning at a point being the Northwest Corner of State Lease No. 20273, having Coordinates of X = 1,725,143.01 and Y = 629,910.84; thence South 00 degrees 20 minutes 43 seconds West 5,295.39 feet along the West line of said State Lease No. 20273 to a point having Coordinates of X = 1,725,111.09 and Y = 624,615.55; thence North 89 degrees 30 minutes 11 seconds West 681.12 feet along said State Lease No. 20273 to a point having Coordinates of X = 1,724,430.00 and Y = 624,621.46; thence South 221.46 feet along said State Lease No. 20273 to its Southwest Corner having Coordinates of X = 1,724,430.00 and Y = 624,400.00; thence East 670.00 feet along the South line of said State Lease No. 20273 to a point being the Northwest Corner of State Lease No. 20234 having Coordinates of X = 1,725,100.00 and Y = 624,400.00; thence South 4,750.00 feet along the West line of said State Lease No. 20234 to its intersection with State Lease No. 20355 having Coordinates of X = 1,725,100.00 and Y = 619,650.00; thence West 325.00 feet along said State Lease No. 20355 to a point having Coordinates of X = 1,724,775.00 and Y = 619,650.00; thence South 304.54 feet along said State Lease No. 20355 to a point having Coordinates of X = 1,724,775.00 and Y = 619,345.46; thence South 88 degrees 14 minutes 20 seconds East 275.26 feet along the said State Lease No. 20355 to a point having Coordinates of X = 1,725,050.13 and Y = 619,337.00; thence South 00 degrees 22 minutes 00 seconds West 5,323.81 feet along the West line of said State Lease No. 20355 to a point having Coordinates of X = 1,725,016.06 and Y = 614,013.30; thence North 89 degrees 17 minutes 06 seconds West 953.70 feet along said State Lease No. 20355 to a point having Coordinates of X = 1,724,062.44 and Y = 614,025.20; thence North 87 degrees 58 minutes 57 seconds West 4,191.26 feet along said State Lease No. 20355 to a point being the Northeast Corner of State Lease No. 20337 having Coordinates of X = 1,719,873.78 and Y = 614,172.76; thence North 89 degrees 39 minutes 21 seconds West 38.63 feet along the North line of said State Lease No. 20337 to the Southeast Corner of State Lease No. 20355 having Coordinates of X = 1,719,835.15 and Y = 614,172.99; thence North 00 degrees 36 minutes 59 seconds East 305.83 feet along the East line of said State Lease No. 20355 to its Northeast Corner having Coordinates of X = 1,719,838.44 and Y = 614,478.80; thence East 49.29 feet to the East line of State Lease No. 20619 having Coordinates of X = 1,719,887.73 and Y = 614,478.80; thence North 10,230.00 feet along the East line of said State Lease No. 20619 to its Northeast Corner having Coordinates of X = 1,719,887.73 and Y = 624,708.80; thence West 5,015.70 feet along the North line of said State Lease No. 20619 to its intersection with the East line of State Lease No. 18096 being the Northwest Corner of said State Lease No. 20619 having Coordinates of X = 1,714,872.03 and Y = 624,708.80; thence North 5,211.20 feet along the East line of State Lease No. 18096 to its Northeast Corner having Coordinates of X = 1,714,872.03 and Y = 629,920.00;

thence North 144.10 feet to a point on the South line of State Lease No. 18181 having Coordinates of X = 1,714,872.03 and Y = 630,064.10; thence South 88 degrees 29 minutes 07 seconds East 4,910.97 feet along the South line of said State Lease No. 18181 to its Southeast Corner having Coordinates of X = 1,719,781.28 and Y = 629,934.28; thence South 89 degrees 44 minutes 58 seconds East 5,361.78 back to the point of beginning, **LESS AND EXCEPT** any right, title, and interest in lands owned by and not under lease from the State of Louisiana, on behalf of the Bienville and Bossier Parish School Boards, situated in Section 16, Township 16 North, Range 10 West, Bienville and Bossier Parishes, Louisiana, contained within the above described tract, (This tract includes only waterbottoms claimed and owned by the state and specifically excludes any land which the state may claim or own and to which the mineral rights are vested in the state), containing approximately **1,655 acres**, all as more particularly outlined on a plat on file in the Office of Mineral Resources, Department of Natural Resources. All bearings, distances and coordinates are based on Louisiana Coordinate System of 1927, (North or South Zone), where applicable.

NOTE: The above description of the Tract nominated for lease has been provided and corrected, where required, exclusively by the nomination party. Any mineral lease selected from this Tract and awarded by the Louisiana State Mineral and Energy Board shall be without warranty of any kind, either express, implied, or statutory, including, but not limited to, the implied warranties of merchantability and fitness for a particular purpose. Should the mineral lease awarded by the Louisiana State Mineral and Energy Board be subsequently modified, cancelled or abrogated due to the existence of conflicting leases, operating agreements, private claims or other future obligations or conditions which may affect all or any portion of the leased Tract, it shall not relieve the Lessee of the obligation to pay any bonus due thereon to the Louisiana State Mineral and Energy Board, nor shall the Louisiana State Mineral and Energy Board be obligated to refund any consideration paid by the Lessor prior to such modification, cancellation, or abrogation, including, but not limited to, bonuses, rentals and royalties.

NOTE: This tract encompasses an area beneath which is located on the Bistineau Gas Storage Pool in the Sligo formation of the Pettet Porosity. Accordingly, any mineral related activity, including, but not limited to, the exploration and drilling for, and the production and storage of oil, gas and other liquid or gaseous minerals, conducted under a valid mineral lease which may be obtained from the State, shall be subject to any statewide orders issued by the Louisiana Office of Conservation pertinent to conducting such operations in this area and upon this tract, including particularly, but not limited to, the following: Order Nos. 287, 287-A, 287-A-1, 287-B, Supplement to 287-B, 287-B-1, 287-B-2, 287-B-3, and 287-B-4. The successful bidder on this tract shall contact the operator of the Bistineau Gas Storage Pool and the Office of Conservation prior to initiating and conducting any of the aforementioned activity hereon.

NOTE: Bidders are hereby advised that certain areas in Lake Bistineau are the subject of dual claims to mineral ownership or mineral rights to certain accreted lands by the federal government and, therefore, title to such accreted lands is in dispute. Any bids accepted by the state mineral board which result in a state mineral lease being given places the successful bidder on notice that the State's title to that acreage, whether the whole or a part of the lease awarded, may be challenged. Accordingly, all leases awarded by the state mineral board are without warranty of any kind, either express, implied, or statutory, including, but not limited to merchantability and fitness for a particular purpose. Should the awarded lease be subsequently modified, cancelled, or abrogated in any way as a result of the above mentioned or any other challenge, or conflicting private claims which affect or may affect all or any portion of the leased tract, the successful bidder/Lessee, their successors, or assigns shall not be relieved of the obligation to pay any monies due prior to the modification, cancellation, or abrogation, including, but not limited to, bonus, rental and royalty, nor shall the State be obligated to refund those monies paid.

Applicant: MCGINTY-DURHAM, INC.

Bidder	Cash Payment	Price/Acre	Rental	Oil	Gas	Other



0 2,500 Feet

Legend

- 19030040
- Active_Leases
- Counties

BIENVILLE

BOSSIER

P.O.B.

SL 18181

SL 20273

SL 18096

SL 20234

SL 20619

T16N - R10W

SL 20355

LAKE BISTINEAU

SL 20337

Office of Mineral Resources, Acres: 1655 Tract Number: 45086

TRACT 45087 - Bienville and Bossier Parishes, Louisiana

All of the lands now or formerly constituting the beds and bottoms of all water bodies of every nature and description as to which title is vested in the State of Louisiana, together with all islands arising therein and other lands formed by accretion or by reliction, where allowed by law, excepting tax adjudicated lands, and not presently under mineral lease on March 13, 2019, situated in Bienville and Bossier Parishes, Louisiana, and more particularly described as follows: Beginning at a point having Coordinates of and X = 1,724,969.33 and Y = 608,738.55, said point being the Southeast corner of State Lease No. 20355, as amended; thence South 5,264.07 feet to a point being the Northeast corner of State Lease No. 20620 having Coordinates of X = 1,724,969.33 and Y = 603,474.48; thence West 7,576.38 feet along the North line of said State Lease No. 20620 to a point being its Northwest corner having Coordinates of X = 1,717,392.95 and Y = 603,474.48, said point also being the Northeast corner of State Lease No. 19760; thence West 2,904.86 feet along the North line of said State Lease No. 19760 to a point having Coordinates of X = 1,714,488.09 and Y = 603,474.48; thence North 01 degrees 12 minutes 55 seconds East 5,475.48 feet to a point having Coordinates of X = 1,714,604.23 and Y = 608,948.73; thence South 88 degrees 47 minutes 05 seconds East 2,616.32 feet to a point being the Southwest Corner of State Lease No. 20337 having Coordinates of X = 1,717,219.96 and Y = 608,893.24; thence South 88 degrees 47 minutes 04 seconds East 2,328.29 feet along the South line of State Lease No. 20337 to a point being a Southeast corner of said State Lease No. 20355, as amended, having Coordinates of X = 1,719,547.73 and Y = 608,843.85; thence along the boundary of said State Lease No. 20355 the following: South 53.28 feet to a point being its Southwest corner having Coordinates of X = 1,719,547.73 and Y = 608,790.57; South 86 degrees 43 minutes 27 seconds East 242.35 feet to a point having Coordinates of X = 1,719,789.68 and Y = 608,776.72; and South 89 degrees 34 minutes 40 seconds East 5,179.79 feet to the point of beginning, **LESS AND EXCEPT** any portion of State Lease No. 19787 that may fall within the above described tract, (This tract includes only waterbottoms claimed and owned by the state and specifically excludes any land which the state or Wildlife and Fisheries may claim or own and to which the mineral rights are vested in them), containing approximately **646 acres**, all as more particularly outlined on a plat on file in the Office of Mineral Resources, Department of Natural Resources. All bearings, distances and coordinates are based on Louisiana Coordinate System of 1927, (North or South Zone), where applicable.

NOTE: The above description of the Tract nominated for lease has been provided and corrected, where required, exclusively by the nomination party. Any mineral lease selected from this Tract and awarded by the Louisiana State Mineral and Energy Board shall be without warranty of any kind, either express, implied, or statutory, including, but not limited to, the implied warranties of merchantability and fitness for a particular purpose. Should the mineral lease awarded by the Louisiana State Mineral and Energy Board be subsequently modified, cancelled or abrogated due to the existence of conflicting leases, operating agreements, private claims or other future obligations or conditions which may affect all or any portion of the leased

Tract, it shall not relieve the Lessee of the obligation to pay any bonus due thereon to the Louisiana State Mineral and Energy Board, nor shall the Louisiana State Mineral and Energy Board be obligated to refund any consideration paid by the Lessor prior to such modification, cancellation, or abrogation, including, but not limited to, bonuses, rentals and royalties.

NOTE: Bidders are hereby advised that certain areas in Lake Bistineau are the subject of dual claims to mineral ownership or mineral rights to certain accreted lands by the federal government and, therefore, title to such accreted lands is in dispute. Any bids accepted by the state mineral board which result in a state mineral lease being given places the successful bidder on notice that the State's title to that acreage, whether the whole or a part of the lease awarded, may be challenged. Accordingly, all leases awarded by the state mineral board are without warranty of any kind, either express, implied, or statutory, including, but not limited to merchantability and fitness for a particular purpose. Should the awarded lease be subsequently modified, cancelled, or abrogated in any way as a result of the above mentioned or any other challenge, or conflicting private claims which affect or may affect all or any portion of the leased tract, the successful bidder/Lessee, their successors, or assigns shall not be relieved of the obligation to pay any monies due prior to the modification, cancellation, or abrogation, including, but not limited to, bonus, rental and royalty, nor shall the State be obligated to refund those monies paid.

Applicant: MCGINTY-DURHAM, INC.

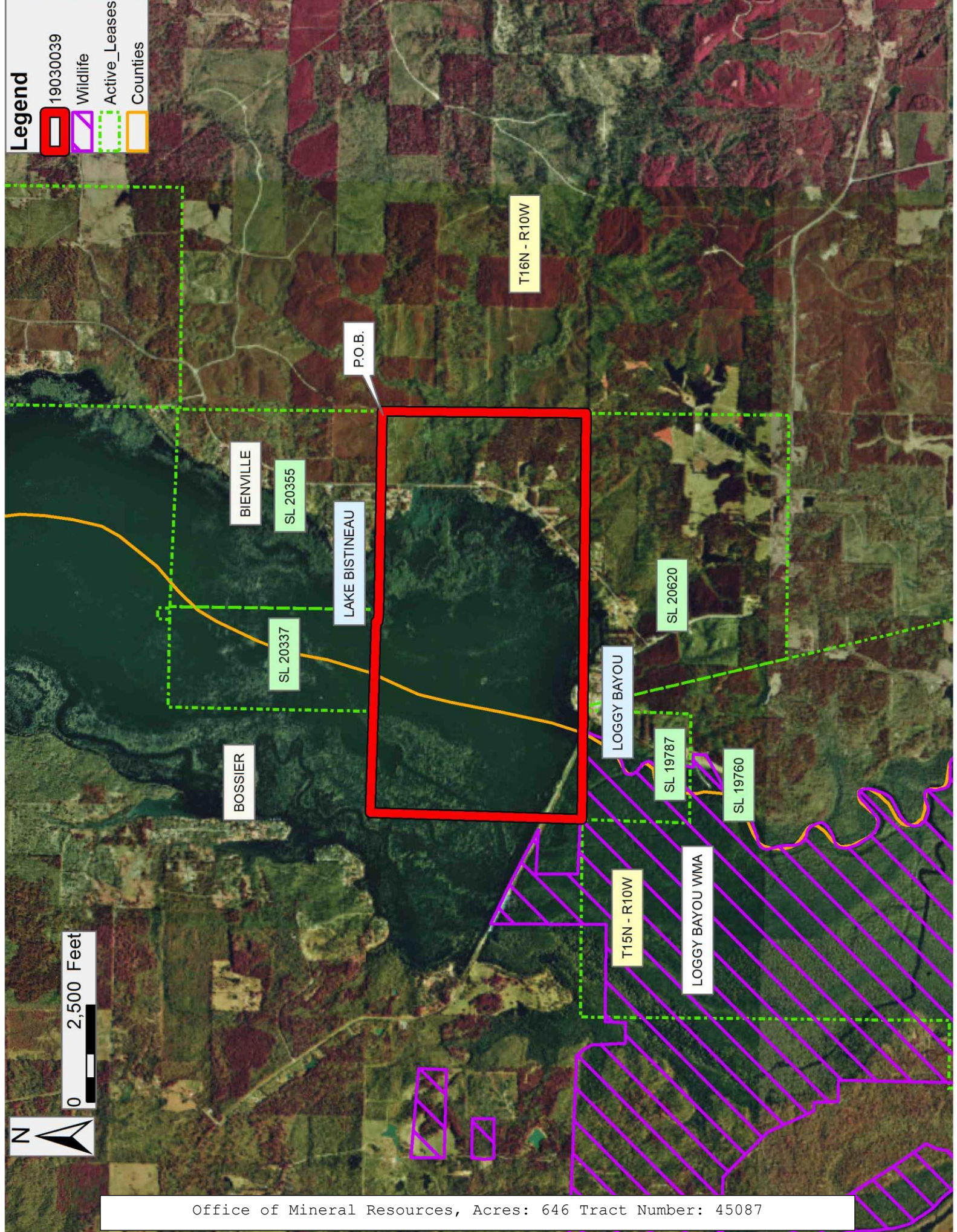
Bidder	Cash Payment	Price/Acre	Rental	Oil	Gas	Other

Legend

- 19030039
- Wildlife
- Active_Leases
- Counties



0 2,500 Feet



Office of Mineral Resources, Acres: 646 Tract Number: 45087

TRACT 45088 - Acadia Parish, Louisiana

All of the lands now or formerly constituting the beds and bottoms of all water bodies of every nature and description as to which title is vested in the State of Louisiana, together with all islands arising therein and other lands formed by accretion or by reliction, where allowed by law, excepting tax adjudicated lands, and not presently under mineral lease on March 13, 2019, situated in Acadia Parish, Louisiana, and more particularly described as follows: Beginning at a point having Coordinates of X = 1,645,455.72 and Y = 636,029.83; thence South 50 degrees 13 minutes 17 seconds East 727.88 feet to a point having Coordinates of X = 1,646,015.11 and Y = 635,564.12; thence South 26 degrees 02 minutes 05 seconds West 1,916.62 feet to a point having Coordinates of X = 1,645,173.88 and Y = 633,841.98; thence South 62 degrees 25 minutes 00 seconds West 3,606.13 feet to a point having Coordinates of X = 1,641,977.63 and Y = 632,172.21; thence North 25 degrees 25 minutes 45 seconds West 750.07 feet to a point having Coordinates of X = 1,641,655.56 and Y = 632,849.61; thence North 47 degrees 33 minutes 59 seconds East 3,098.13 feet to a point having Coordinates of X = 1,643,942.16 and Y = 634,940.03; thence North 54 degrees 14 minutes 43 seconds East 1,865.08 feet to the point of beginning, containing approximately **10 acres**, all as more particularly outlined on a plat on file in the Office of Mineral Resources, Department of Natural Resources. All bearings, distances and coordinates are based on Louisiana Coordinate System of 1927, (North or South Zone), where applicable.

NOTE: The above description of the Tract nominated for lease has been provided and corrected, where required, exclusively by the nomination party. Any mineral lease selected from this Tract and awarded by the Louisiana State Mineral and Energy Board shall be without warranty of any kind, either express, implied, or statutory, including, but not limited to, the implied warranties of merchantability and fitness for a particular purpose. Should the mineral lease awarded by the Louisiana State Mineral and Energy Board be subsequently modified, cancelled or abrogated due to the existence of conflicting leases, operating agreements, private claims or other future obligations or conditions which may affect all or any portion of the leased Tract, it shall not relieve the Lessee of the obligation to pay any bonus due thereon to the Louisiana State Mineral and Energy Board, nor shall the Louisiana State Mineral and Energy Board be obligated to refund any consideration paid by the Lessor prior to such modification, cancellation, or abrogation, including, but not limited to, bonuses, rentals and royalties.

Applicant: ANCHOR LAND & EXPLORATON COMPANY, L.L.C.

Bidder	Cash Payment	Price/Acre	Rental	Oil	Gas	Other



0 1,000 Feet

Legend



19030001

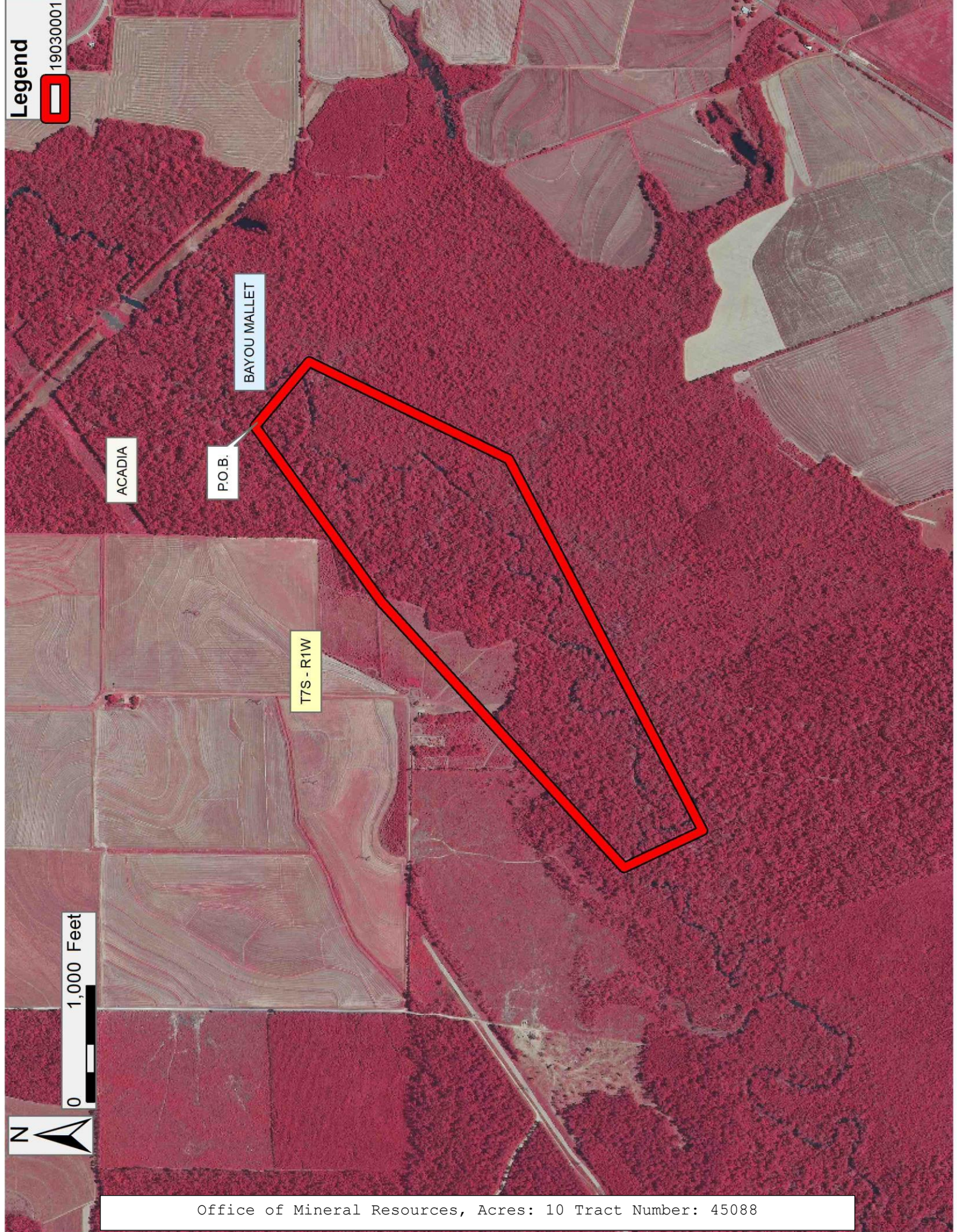
ACADIA

P.O.B.

BAYOU MALLET

T7S - R1W

Office of Mineral Resources, Acres: 10 Tract Number: 45088



TRACT 45089 - Terrebonne Parish, Louisiana

All of the lands now or formerly constituting the beds and bottoms of all water bodies of every nature and description as to which title is vested in the State of Louisiana, together with all islands arising therein and other lands formed by accretion or by reliction, where allowed by law, excepting tax adjudicated lands, and not presently under mineral lease on March 13, 2019, situated in Terrebonne Parish, Louisiana, and more particularly described as follows: Beginning at a point having Coordinates of X = 2,036,100.00 and Y = 263,000.00; thence East 16,000.00 feet to a point having Coordinates of X = 2,052,100.00 and Y = 263,000.00; thence South 11,185.00 feet to a point having Coordinates of X = 2,052,100.00 and Y = 251,815.00; thence West 16,000.00 feet to a point having Coordinates of X = 2,036,100.00 and Y = 251,815.00; thence North 11,185.00 feet to the point of beginning, containing approximately **2,499 acres**, all as more particularly outlined on a plat on file in the Office of Mineral Resources, Department of Natural Resources. All bearings, distances and coordinates are based on Louisiana Coordinate System of 1927, (North or South Zone), where applicable.

NOTE: The above description of the Tract nominated for lease has been provided and corrected, where required, exclusively by the nomination party. Any mineral lease selected from this Tract and awarded by the Louisiana State Mineral and Energy Board shall be without warranty of any kind, either express, implied, or statutory, including, but not limited to, the implied warranties of merchantability and fitness for a particular purpose. Should the mineral lease awarded by the Louisiana State Mineral and Energy Board be subsequently modified, cancelled or abrogated due to the existence of conflicting leases, operating agreements, private claims or other future obligations or conditions which may affect all or any portion of the leased Tract, it shall not relieve the Lessee of the obligation to pay any bonus due thereon to the Louisiana State Mineral and Energy Board, nor shall the Louisiana State Mineral and Energy Board be obligated to refund any consideration paid by the Lessor prior to such modification, cancellation, or abrogation, including, but not limited to, bonuses, rentals and royalties.

NOTE: The State of Louisiana does hereby reserve, and this lease shall be subject to, the imprescriptible right of surface use in the nature of a servitude in favor of the Department of Natural Resources, including its Offices and Commissions, for the sole purpose of implementing, constructing, servicing and maintaining approved coastal zone management and/or restoration projects. Utilization of any and all rights derived under this lease by the mineral lessee, its agents, successors or assigns, shall not interfere with nor hinder the reasonable surface use by the Department of Natural Resources, its Offices or Commissions, as herein above reserved.

Applicant: DAY EXPLORATION

Bidder	Cash Payment	Price/Acre	Rental	Oil	Gas	Other

Legend

19030003
Counties

T19S - R13E

TERREBONNE

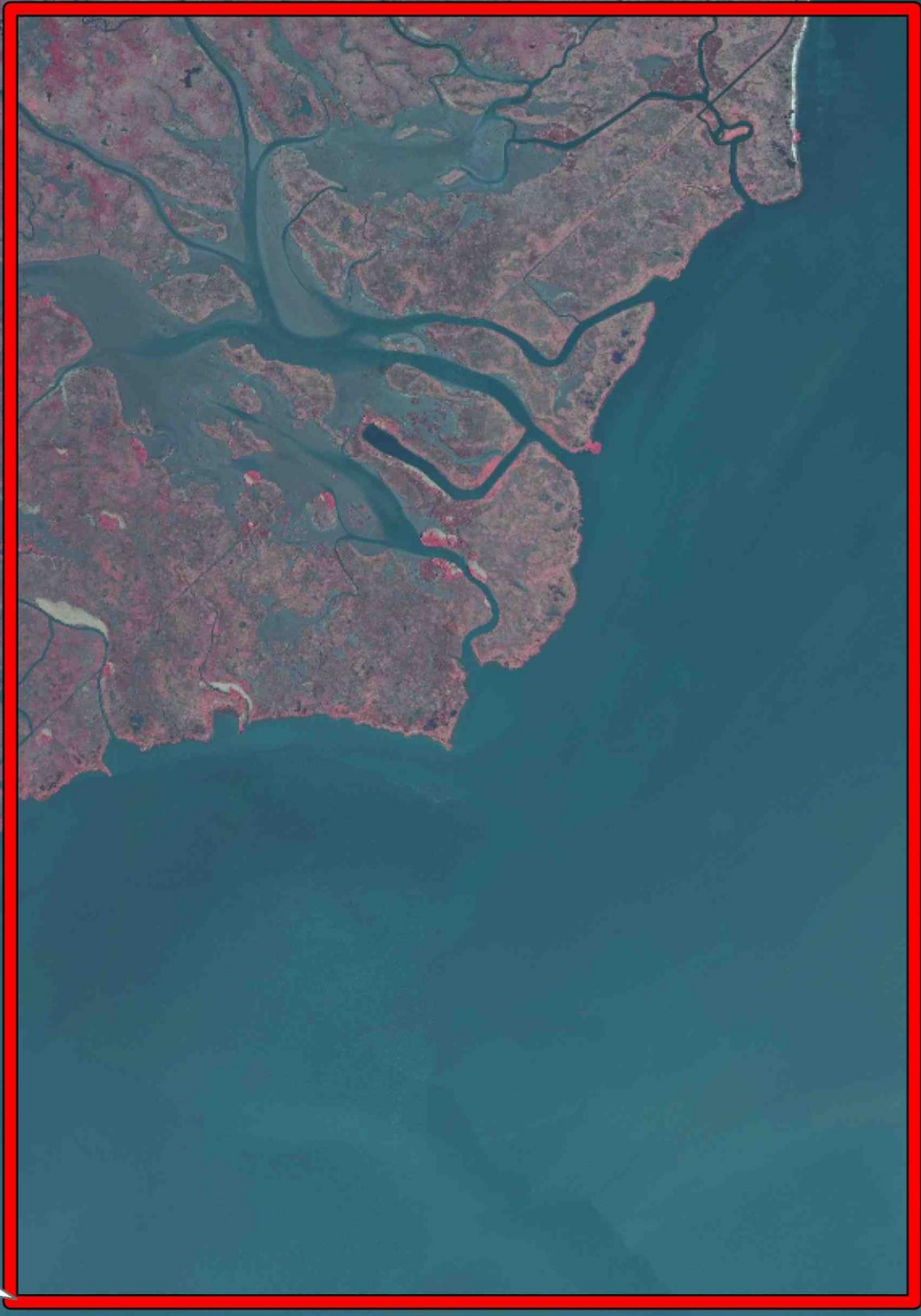
T19S - R12E



0 2,000 Feet

P.O.B.

ST MARY



FOURLEAGUE BAY

Office of Mineral Resources, Acres: 2499 Tract Number: 45089

TRACT 45090 - Terrebonne Parish, Louisiana

All of the lands now or formerly constituting the beds and bottoms of all water bodies of every nature and description as to which title is vested in the State of Louisiana, together with all islands arising therein and other lands formed by accretion or by reliction, where allowed by law, excepting tax adjudicated lands, and not presently under mineral lease on March 13, 2019, situated in Terrebonne Parish, Louisiana, and more particularly described as follows: Beginning at a point having Coordinates of X = 2,052,100.00 and Y = 263,000.00; thence East 18,480.00 feet to a point having Coordinates of X = 2,070,580.00 and Y = 263,000.00; thence South 11,185.00 feet to a point having Coordinates of X = 2,070,580.00 and Y = 251,815.00; thence West 18,480.00 feet to a point having Coordinates of X = 2,052,100.00 and Y = 251,815.00; thence North 11,185.00 feet to the point of beginning, containing approximately **136 acres**, all as more particularly outlined on a plat on file in the Office of Mineral Resources, Department of Natural Resources. All bearings, distances and coordinates are based on Louisiana Coordinate System of 1927, (North or South Zone), where applicable.

NOTE: The above description of the Tract nominated for lease has been provided and corrected, where required, exclusively by the nomination party. Any mineral lease selected from this Tract and awarded by the Louisiana State Mineral and Energy Board shall be without warranty of any kind, either express, implied, or statutory, including, but not limited to, the implied warranties of merchantability and fitness for a particular purpose. Should the mineral lease awarded by the Louisiana State Mineral and Energy Board be subsequently modified, cancelled or abrogated due to the existence of conflicting leases, operating agreements, private claims or other future obligations or conditions which may affect all or any portion of the leased Tract, it shall not relieve the Lessee of the obligation to pay any bonus due thereon to the Louisiana State Mineral and Energy Board, nor shall the Louisiana State Mineral and Energy Board be obligated to refund any consideration paid by the Lessor prior to such modification, cancellation, or abrogation, including, but not limited to, bonuses, rentals and royalties.

NOTE: The State of Louisiana does hereby reserve, and this lease shall be subject to, the imprescriptible right of surface use in the nature of a servitude in favor of the Department of Natural Resources, including its Offices and Commissions, for the sole purpose of implementing, constructing, servicing and maintaining approved coastal zone management and/or restoration projects. Utilization of any and all rights derived under this lease by the mineral lessee, its agents, successors or assigns, shall not interfere with nor hinder the reasonable surface use by the Department of Natural Resources, its Offices or Commissions, as herein above reserved.

Applicant: DAY EXPLORATION

Bidder	Cash Payment	Price/Acre	Rental	Oil	Gas	Other



0 2,500 Feet

Legend



19030004

P.O.B.

LITTLE CARENCRO BAYOU

BAYOU DE LOG

TERREBONNE

T19S - R13E

T19S - R12E

FOURLEAGUE BAY

T20S - R13E

BIG CARENCRO BAYOU



TRACT 45091 - Terrebonne Parish, Louisiana

All of the lands now or formerly constituting the beds and bottoms of all water bodies of every nature and description as to which title is vested in the State of Louisiana, together with all islands arising therein and other lands formed by accretion or by reliction, where allowed by law, excepting tax adjudicated lands, and not presently under mineral lease on March 13, 2019, situated in Terrebonne Parish, Louisiana, and more particularly described as follows: Beginning at a point having Coordinates of X = 2,070,580.00 and Y = 263,000.00; thence East 16,480.00 feet to a point having Coordinates of X = 2,087,060.00 and Y = 263,000.00; thence South 18,480.00 feet to a point having Coordinates of X = 2,087,060.00 and Y = 244,520.00; thence West 16,480.00 feet to a point having Coordinates of X = 2,070,580.00 and Y = 244,520.00; thence North 18,480.00 feet to the point of beginning, containing approximately **2,460 acres**, all as more particularly outlined on a plat on file in the Office of Mineral Resources, Department of Natural Resources. All bearings, distances and coordinates are based on Louisiana Coordinate System of 1927, (North or South Zone), where applicable.

NOTE: The above description of the Tract nominated for lease has been provided and corrected, where required, exclusively by the nomination party. Any mineral lease selected from this Tract and awarded by the Louisiana State Mineral and Energy Board shall be without warranty of any kind, either express, implied, or statutory, including, but not limited to, the implied warranties of merchantability and fitness for a particular purpose. Should the mineral lease awarded by the Louisiana State Mineral and Energy Board be subsequently modified, cancelled or abrogated due to the existence of conflicting leases, operating agreements, private claims or other future obligations or conditions which may affect all or any portion of the leased Tract, it shall not relieve the Lessee of the obligation to pay any bonus due thereon to the Louisiana State Mineral and Energy Board, nor shall the Louisiana State Mineral and Energy Board be obligated to refund any consideration paid by the Lessor prior to such modification, cancellation, or abrogation, including, but not limited to, bonuses, rentals and royalties.

NOTE: The State of Louisiana does hereby reserve, and this lease shall be subject to, the imprescriptible right of surface use in the nature of a servitude in favor of the Department of Natural Resources, including its Offices and Commissions, for the sole purpose of implementing, constructing, servicing and maintaining approved coastal zone management and/or restoration projects. Utilization of any and all rights derived under this lease by the mineral lessee, its agents, successors or assigns, shall not interfere with nor hinder the reasonable surface use by the Department of Natural Resources, its Offices or Commissions, as herein above reserved.

Applicant: DAY EXPLORATION

Bidder	Cash Payment	Price/Acre	Rental	Oil	Gas	Other

Legend
19030005



Office of Mineral Resources, Acres: 2460 Tract Number: 45091