

TRACT 44850 - Bienville Natchitoches and Winn Parishes, Louisiana

All of the lands now or formerly constituting the beds and bottoms of all water bodies of every nature and description as to which title is vested in the State of Louisiana, together with all islands arising therein and other lands formed by accretion or by reliction, where allowed by law, excepting tax adjudicated lands, and not presently under mineral lease on March 14, 2018, situated in Bienville Natchitoches and Winn Parishes, Louisiana, and more particularly described as follows: Beginning at a point having Coordinates X = 1,867,475.74 and Y = 539,056.86; thence South 00 degrees 20 minutes 59 seconds East 5,351.86 feet to a point having Coordinates of X = 1,867,508.41 and Y = 533,705.09; thence North 89 degrees 43 minutes 32 seconds East 5,125.36 feet to a point having Coordinates X = 1,872,633.71 and Y = 533,729.66; thence South 00 degrees 14 minutes 29 seconds East 5,310.70 feet to a point having Coordinates X = 1,872,656.10 and Y = 528,419.00; thence North 89 degrees 45 minutes 02 seconds West 10,485.44 to a point having Coordinates X = 1,862,170.76 and Y = 528,464.64; thence North 00 degrees 31 minutes 29 seconds West 10,641.97 feet to a point having Coordinates X = 1,862,073.29 and Y = 539,106.16; thence South 89 degrees 28 minutes 38 seconds East 5,402.68 feet to the point of beginning, containing approximately **12 acres**, all as more particularly outlined on a plat on file in the Office of Mineral Resources, Department of Natural Resources. All bearings, distances and coordinates are based on Louisiana Coordinate System of 1927, (North or South Zone), where applicable.

NOTE: The above description of the Tract nominated for the purpose of acquiring a mineral lease or a geophysical agreement has been provided and corrected, where required, exclusively by the nominating party. Any mineral lease or geophysical agreement selected from this Tract and awarded by the Louisiana State Mineral and Energy Board shall be without warranty of any kind, either express, implied or statutory including, but not limited to, title or the implied warranties of merchantability and fitness for a particular purpose.

An error or omission in the nominating party's Tract description may require that a State mineral lease or geophysical agreement be modified, canceled or abrogated due to the existence of conflicting leases, operating agreements, private claims or other future obligations or conditions within the Tract described. In such case, however, the Louisiana State Mineral and Energy Board shall not be obligated to refund any consideration paid by the Lessee prior to such modification, cancellation or abrogation including, but not limited to, bonuses, rentals and royalties.

NOTE: A portion of this tract is located on or adjacent to a Louisiana designated Natural and Scenic River. The applicant must obtain authorization from the Louisiana Department of Wildlife and Fisheries, Scenic Rivers Program prior to initiating any activities within or

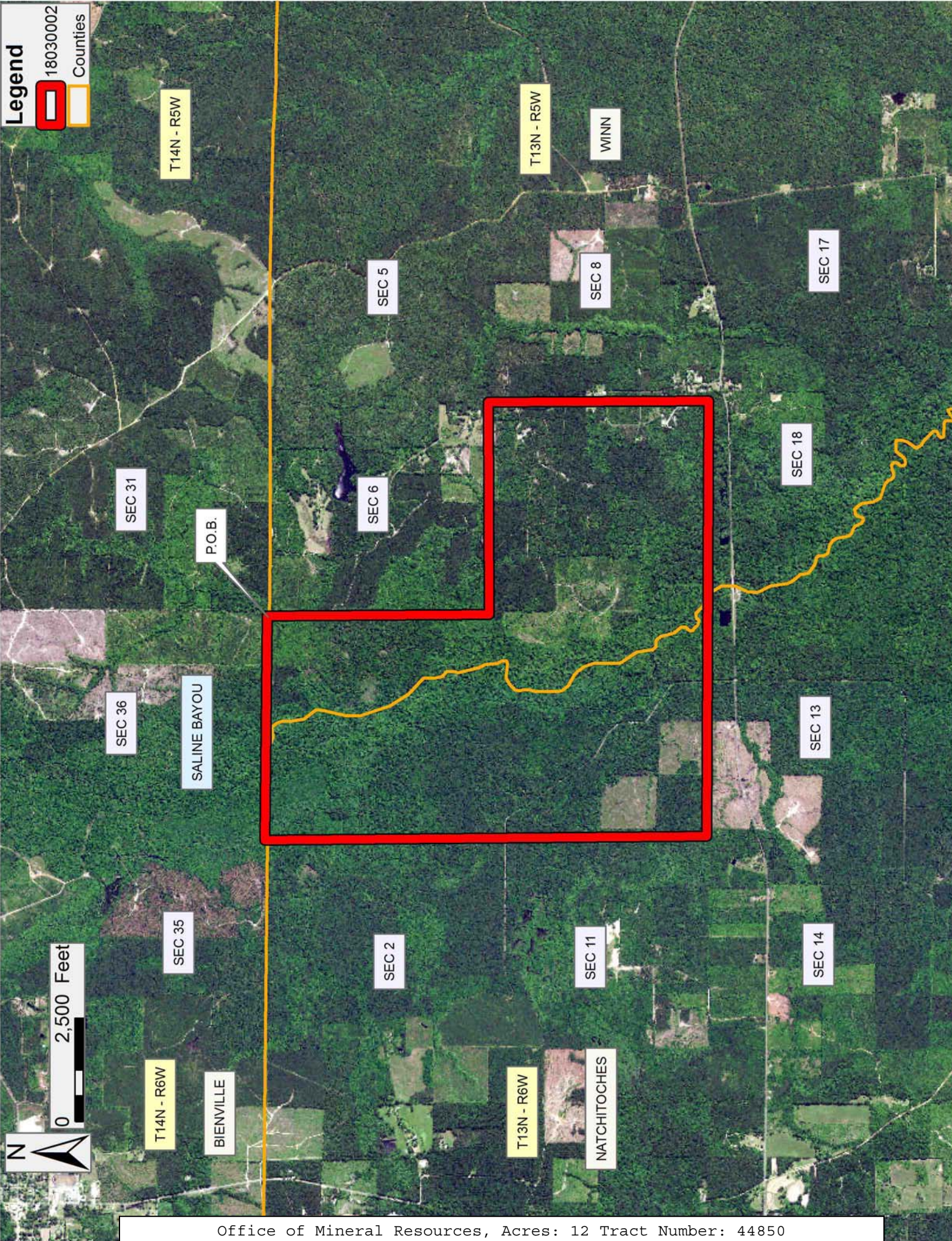
adjacent to the river, including, but not limited to, crossings by roads and pipelines, well sites, production facilities and water withdrawals.

Applicant: HUNTER ENERGY CORPORATION

Bidder	Cash Payment	Price/Acre	Rental	Oil	Gas	Other

Legend

18030002
Counties



TRACT 44851 - Portion of Blocks 1, 16, and 2, Breton Sound Area, and Block 69, Chandeleur Sound Area, and Block 4, Main Pass Area, Revised, St. Bernard Parish, Louisiana

All of the lands now or formerly constituting the beds and bottoms of all water bodies of every nature and description as to which title is vested in the State of Louisiana, together with all islands arising therein and other lands formed by accretion or by reliction, where allowed by law, excepting tax adjudicated lands, and not presently under mineral lease on March 14, 2018, situated in St. Bernard Parish, Louisiana, and more particularly described as follows: Beginning at a point having Coordinates of X = 2,642,307.49 and Y = 381,761.37; thence South 45 degrees 12 minutes 34 seconds East 13,685.17 feet to a point having Coordinates of X = 2,652,019.66 and Y = 372,119.92; thence South 58 degrees 03 minutes 37 seconds West 11,793.35 feet to a point having Coordinates of X = 2,642,011.77 and Y = 365,880.91; thence North 55 degrees 05 minutes 53 seconds West 11,138.33 feet to a point having Coordinates 2,632,876.88 and Y = 372,253.99; thence North 44 degrees 46 minutes 04 seconds East 13,391.29 feet to the point of beginning, **LESS AND EXCEPT** all that portion of State Lease No. 21754 which lies entirely within the above described tract, being more fully described as follows: Commencing at a point being the point of beginning of the above described nominated tract having Coordinates of X = 2,642,307.49 and Y = 381,761.37; thence South 08 degrees 27 minutes 28 seconds West 7,183.49 feet to a point being the point of beginning of said State Lease No. 21754 within Block 1, Breton Sound Area, having Coordinates of X = 2,641,250.95 and Y = 374,656.00; thence East 2,392.89 feet to a point having Coordinates of X = 2,643,643.84 and Y = 374,656.00; thence South 67 degrees 50 minutes 00 seconds East 4,401.36 feet to a point having Coordinates of X = 2,647,719.90 and Y = 372,995.36; thence South 29 degrees 44 minutes 04 seconds West 3,399.29 feet to a point having Coordinates of X = 2,646,033.92 and Y = 370,043.64; thence South 57 degrees 36 minutes 33 seconds West 2,735.50 feet to a point having Coordinates of X = 2,643,724.03 and Y = 368,578.25; thence South 75 degrees 59 minutes 22 seconds West 2,195.45 feet to a point having Coordinates of X = 2,641,593.89 and Y = 368,046.73; thence North 61 degrees 59 minutes 30 seconds West 2,549.83 feet to a point having Coordinates of X = 2,639,342.70 and Y = 369,244.13; thence North 19 degrees 40 minutes 51 seconds West 2,376.91 feet to a point having Coordinates of X = 2,638,542.20 and Y = 371,482.19; thence North 00 degrees 05 minutes 05 seconds East 2,313.79 feet to a point having Coordinates of X = 2,638,545.62 and Y = 373,795.98; thence North 72 degrees 21 minutes 53 seconds East 2,838.74 feet to the point of beginning, the nominated tract containing approximately **2,489.85 acres**, all as more particularly outlined on a plat on file in the Office of Mineral Resources, Department of Natural Resources. All bearings, distances and coordinates are based on Louisiana Coordinate System of 1927, (North or South Zone), where applicable.

NOTE: The above description of the Tract nominated for the purpose of acquiring a mineral lease or a geophysical agreement has been provided and corrected, where required, exclusively by the nominating party. Any mineral lease or geophysical agreement selected from this Tract and awarded by the Louisiana State Mineral and Energy Board shall be without warranty of any kind, either express, implied or statutory including, but not limited to, title or the implied warranties of merchantability and fitness for a particular purpose.

An error or omission in the nominating party's Tract description may require that a State mineral lease or geophysical agreement be modified, canceled or abrogated due to the existence of conflicting leases, operating agreements, private claims or other future obligations or conditions within the Tract described. In such case, however, the Louisiana State Mineral and Energy Board shall not be obligated to refund any consideration paid by the Lessee prior to such modification, cancellation or abrogation including, but not limited to, bonuses, rentals and royalties.

NOTE: The State of Louisiana does hereby reserve, and this lease shall be subject to, the imprescriptible right of surface use in the nature of a servitude in favor of the Department of Natural Resources, including its Offices and Commissions, for the sole purpose of implementing, constructing, servicing and maintaining approved coastal zone management and/or restoration projects. Utilization of any and all rights derived under this lease by the mineral lessee, its agents, successors or assigns, shall not interfere with nor hinder the reasonable surface use by the Department of Natural Resources, its Offices or Commissions, as herein above reserved.

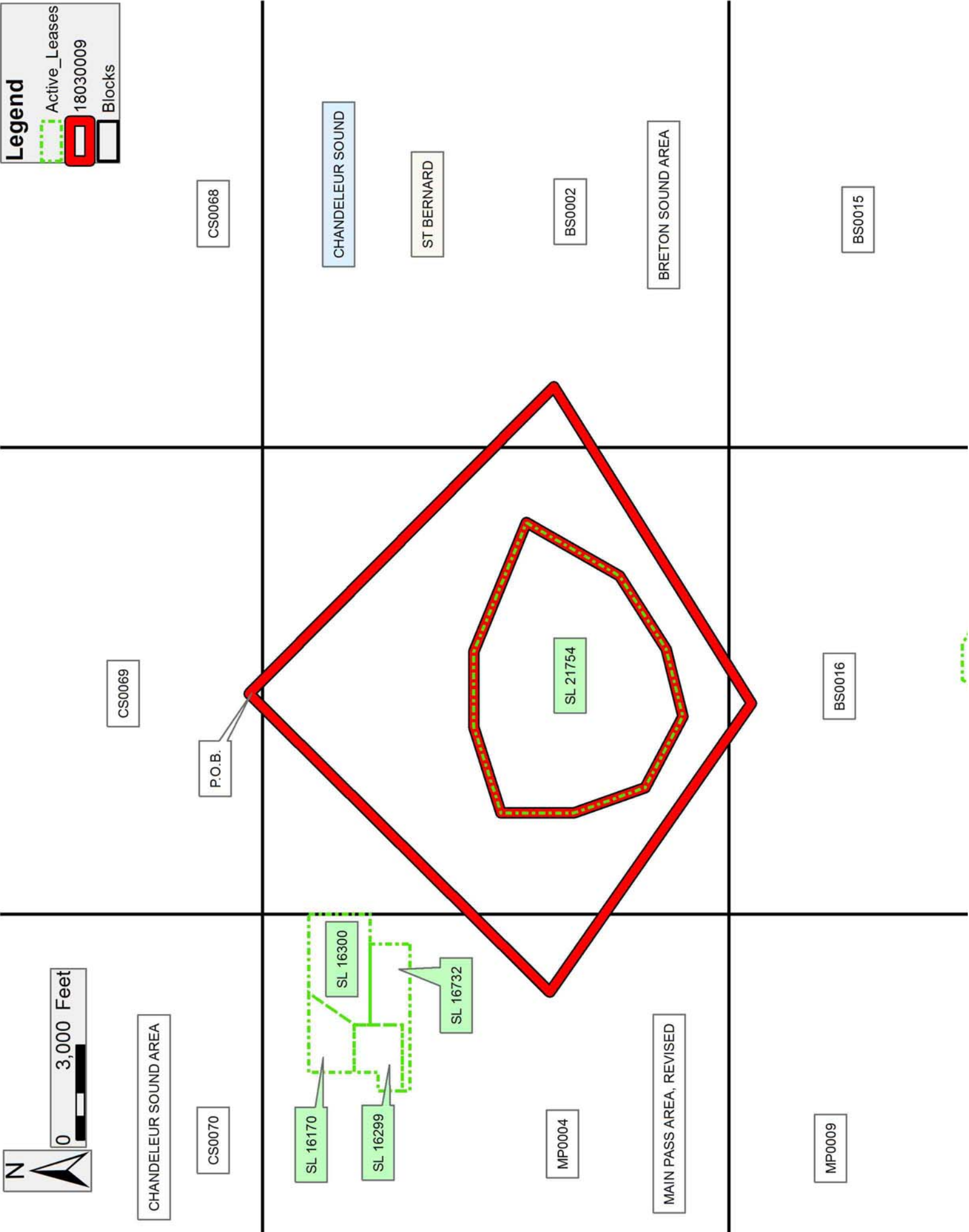
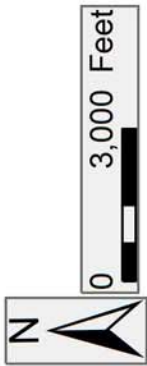
NOTE: This tract is located in an area designated by the Louisiana Legislature or the Wildlife and Fisheries Commission as a Public Oyster Seed Ground, Reservation, or area of Calcasieu or Sabine Lake. Proposed projects occurring in these areas will be evaluated on a case by case basis by Louisiana Department of Wildlife & Fisheries. Modifications to proposed project features including, but not limited to, access routes, well sites, flowlines, and appurtenant structures maybe required by the Louisiana Department of Wildlife and Fisheries. In addition, compensatory mitigation will be required to offset unavoidable habitat impacts.

Applicant: SYREN ENERGY, LLC

Bidder	Cash Payment	Price/Acre	Rental	Oil	Gas	Other

Legend

- Active_Leases 18030009
- Blocks



TRACT 44852 - Portion of Block 75, Main Pass Area, Revised, Plaquemines Parish, Louisiana

All of the lands now or formerly constituting the beds and bottoms of all water bodies of every nature and description as to which title is vested in the State of Louisiana, together with all islands arising therein and other lands formed by accretion or by reliction, where allowed by law, excepting tax adjudicated lands, and not presently under mineral lease on March 14, 2018, situated in Plaquemines Parish, Louisiana, and more particularly described as follows: Beginning at a point having Coordinates of X = 2,751,410.00 and Y = 201,490.00; thence North 4,779.13 feet to a point on the Louisiana Coastline, as decreed by the Supreme Court of the United States, as determined by a Special Master appointed therein, in litigation styled *United States v. State of Louisiana et al No. 9 Original*, in 1975, having Coordinates of X = 2,751,410.00 and Y = 206,269.13; thence Southeasterly on a straight line along said Coastline to a point having Coordinates of X = 2,754,818.00 and Y = 204,885.80; thence South 3,395.80 feet to a point having Coordinates of X = 2,754,818.00 and Y = 201,490.00; thence West 3,408.00 feet to the point of beginning, containing approximately **319.79 acres**, all as more particularly outlined on a plat on file in the Office of Mineral Resources, Department of Natural Resources. All bearings, distances and coordinates are based on Louisiana Coordinate System of 1927, (North or South Zone), where applicable.

NOTE: The above description of the Tract nominated for the purpose of acquiring a mineral lease or a geophysical agreement has been provided and corrected, where required, exclusively by the nominating party. Any mineral lease or geophysical agreement selected from this Tract and awarded by the Louisiana State Mineral and Energy Board shall be without warranty of any kind, either express, implied or statutory including, but not limited to, title or the implied warranties of merchantability and fitness for a particular purpose.

An error or omission in the nominating party's Tract description may require that a State mineral lease or geophysical agreement be modified, canceled or abrogated due to the existence of conflicting leases, operating agreements, private claims or other future obligations or conditions within the Tract described. In such case, however, the Louisiana State Mineral and Energy Board shall not be obligated to refund any consideration paid by the Lessee prior to such modification, cancellation or abrogation including, but not limited to, bonuses, rentals and royalties.

NOTE: The State of Louisiana does hereby reserve, and this lease shall be subject to, the imprescriptible right of surface use in the nature of a servitude in favor of the Department of Natural Resources, including its Offices and Commissions, for the sole purpose of implementing, constructing, servicing and maintaining approved coastal zone management and/or restoration projects. Utilization of any and all rights derived




under this lease by the mineral lessee, its agents, successors or assigns, shall not interfere with nor hinder the reasonable surface use by the Department of Natural Resources, its Offices or Commissions, as herein above reserved.

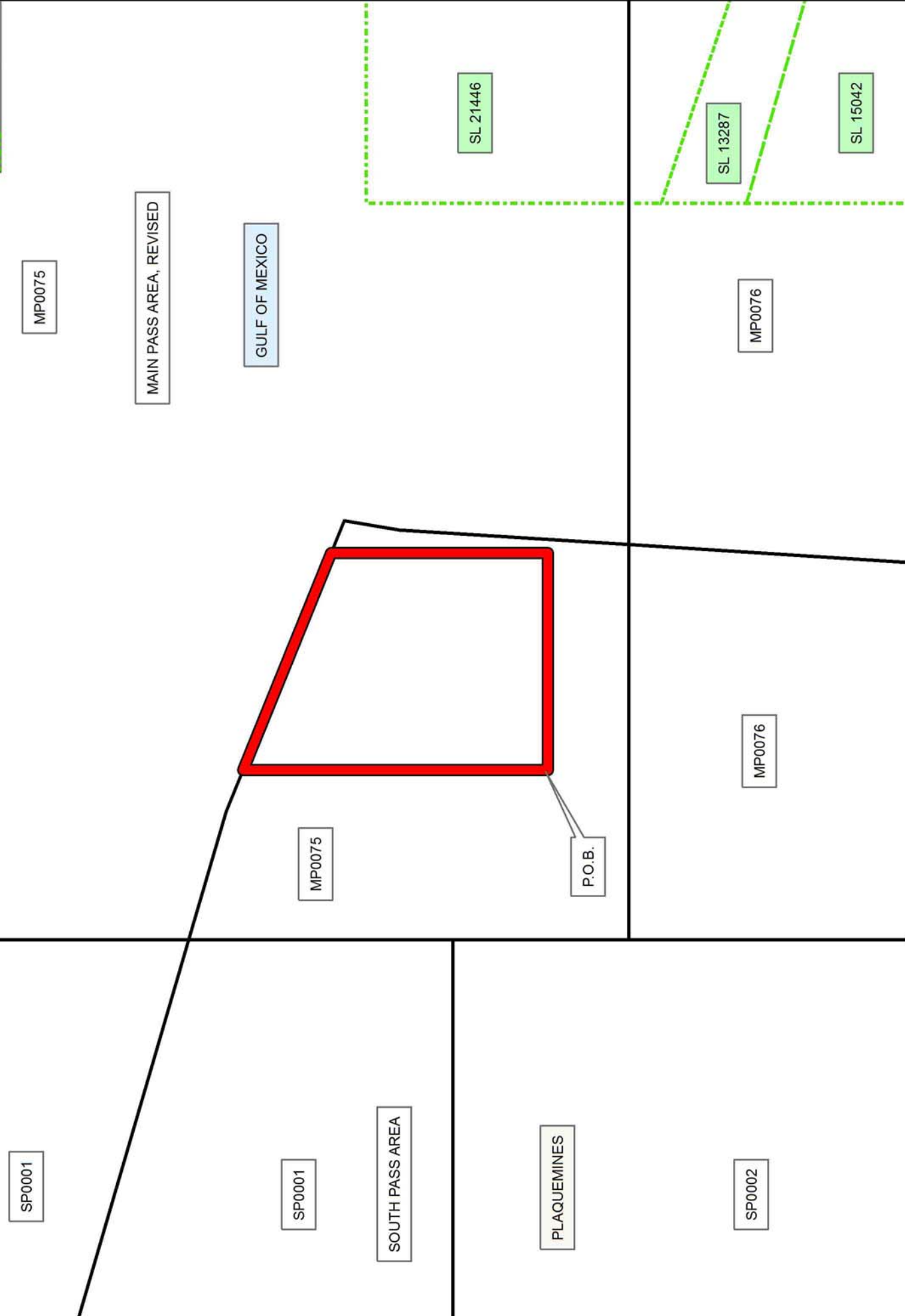
Applicant: ALLEN & KIRMSE, LTD.

Bidder	Cash Payment	Price/Acre	Rental	Oil	Gas	Other



Legend

-  18030006
-  Blocks
-  Active_Leases



TRACT 44853 - Portion of Blocks 75, and 76, Main Pass Area, Revised, and Block 2, South Pass Area, Plaquemines Parish, Louisiana

All of the lands now or formerly constituting the beds and bottoms of all water bodies of every nature and description as to which title is vested in the State of Louisiana, together with all islands arising therein and other lands formed by accretion or by reliction, where allowed by law, excepting tax adjudicated lands, and not presently under mineral lease on March 14, 2018, situated in Plaquemines Parish, Louisiana, and more particularly described as follows: Beginning at a having Coordinates of X = 2,751,410.00 and Y = 202,972.00; thence South 5,953.00 feet to a point having Coordinates of X = 2,751,410.00 and Y = 197,019.00; thence West 4,137.02 feet to a point on the Eastern boundary of the Pass-A-Loutre Wildlife Management Area having Coordinates of X = 2,747,272.98 and Y = 197,019.00; thence Northwesterly along an arc with a radius of 21,825.00 feet and a center of X = 2,725,759.55 and Y = 193,344.34 to a point having Coordinates of X = 2,745,346.25 and Y = 202,972.00; thence East 6,063.75 feet to the point of beginning, containing approximately **675.42 acres**, all as more particularly outlined on a plat on file in the Office of Mineral Resources, Department of Natural Resources. All bearings, distances and coordinates are based on Louisiana Coordinate System of 1927, (North or South Zone), where applicable.

NOTE: The above description of the Tract nominated for the purpose of acquiring a mineral lease or a geophysical agreement has been provided and corrected, where required, exclusively by the nominating party. Any mineral lease or geophysical agreement selected from this Tract and awarded by the Louisiana State Mineral and Energy Board shall be without warranty of any kind, either express, implied or statutory including, but not limited to, title or the implied warranties of merchantability and fitness for a particular purpose.

An error or omission in the nominating party's Tract description may require that a State mineral lease or geophysical agreement be modified, canceled or abrogated due to the existence of conflicting leases, operating agreements, private claims or other future obligations or conditions within the Tract described. In such case, however, the Louisiana State Mineral and Energy Board shall not be obligated to refund any consideration paid by the Lessee prior to such modification, cancellation or abrogation including, but not limited to, bonuses, rentals and royalties.

NOTE: The State of Louisiana does hereby reserve, and this lease shall be subject to, the imprescriptible right of surface use in the nature of a servitude in favor of the Department of Natural Resources, including its Offices and Commissions, for the sole purpose of implementing, constructing, servicing and maintaining approved coastal zone management and/or restoration projects. Utilization of any and all rights derived under this lease by the mineral lessee, its agents, successors or assigns, shall not interfere with nor hinder the reasonable surface use by the

Department of Natural Resources, its Offices or Commissions, as herein above reserved.

Applicant: ALLEN & KIRMSE, LTD.

Bidder	Cash Payment	Price/Acre	Rental	Oil	Gas	Other

Legend

- 18030007
- Wildlife
- Blocks

