

TRACT 44695 - St. Landry Parish, Louisiana

A certain Tract of land, excluding the beds and bottoms of all navigable waters, belonging to and not presently under mineral lease from Red River, Atchafalaya & Bayou Boeuf Levee District on March 8, 2017, being more fully described as follows: Northeast Quarter (NE 1/4) Section 33, Township 2 South, Range 4 East, St. Landry Parish, Louisiana, containing **160 acres**, all as more particularly outlined on a plat on file in the Office of Mineral Resources, Department of Natural Resources. The description is based on information provided by the State Agency regarding location and ownership of surface and mineral rights. All bearings, distances and coordinates, if applicable, are based on Louisiana Coordinate System of 1927, (North or South Zone).

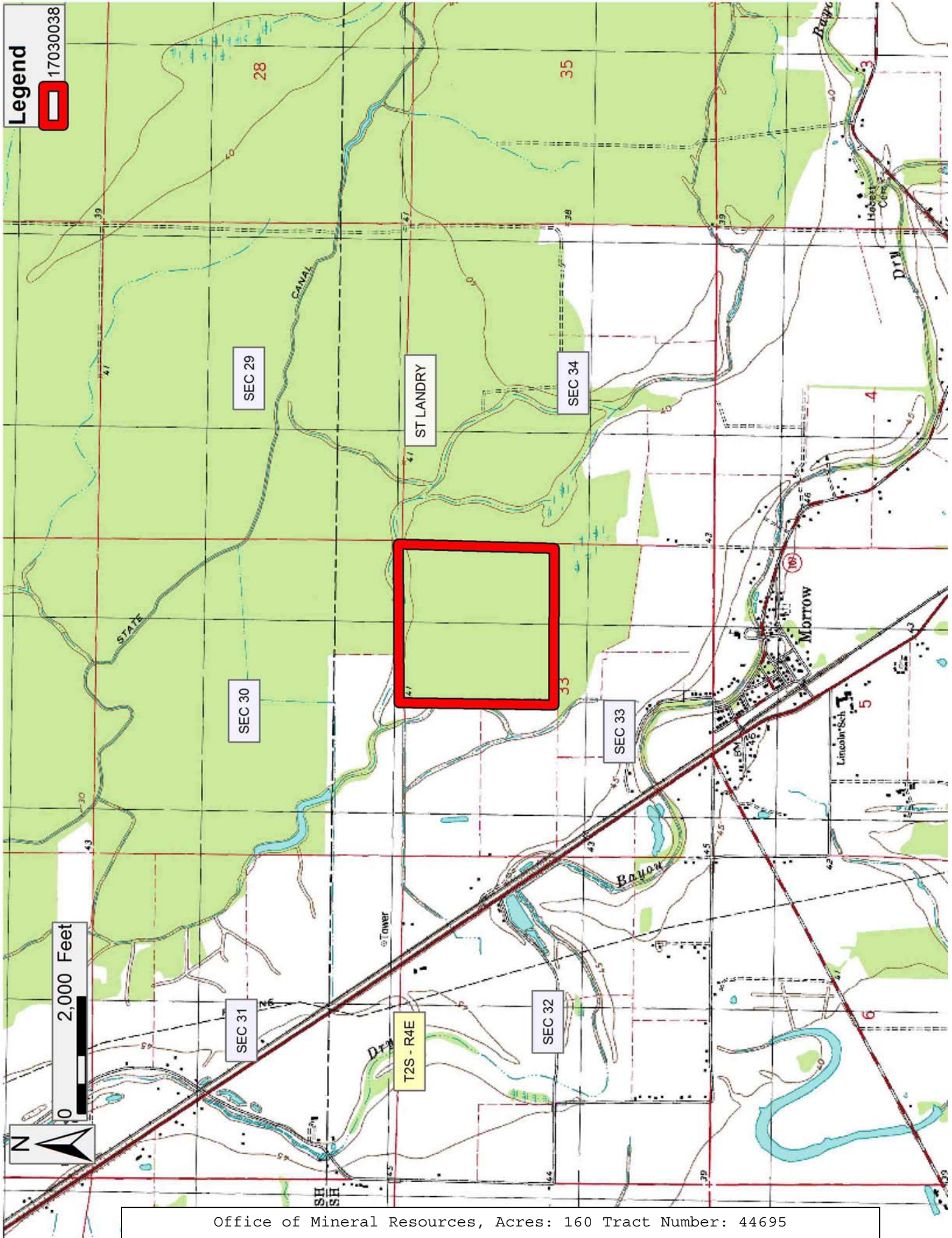
NOTE: The above description of the Tract nominated for the purpose of acquiring a mineral lease or a geophysical agreement has been provided and corrected, where required, exclusively by the nominating party. Any mineral lease or geophysical agreement selected from this Tract and awarded by the Louisiana State Mineral and Energy Board shall be without warranty of any kind, either express, implied or statutory including, but not limited to, title or the implied warranties of merchantability and fitness for a particular purpose.

An error or omission in the nominating party's Tract description may require that a State mineral lease or geophysical agreement be modified, canceled or abrogated due to the existence of conflicting leases, operating agreements, private claims or other future obligations or conditions within the Tract described. In such case, however, the Louisiana State Mineral and Energy Board shall not be obligated to refund any consideration paid by the Lessee prior to such modification, cancellation or abrogation including, but not limited to, bonuses, rentals and royalties.

Applicant: TANNEBAUM RESOURCES CO. to Agency and by Resolution from the Red River, Atchafalaya & Bayou Boeuf Levee District authorizing the Mineral Board to act in its behalf

Bidder	Cash Payment	Price/Acre	Rental	Oil	Gas	Other

Legend  17030038



TRACT 44696 - Lafayette Parish, Louisiana

A certain Tract of land, excluding the beds and bottoms of all navigable waters, belonging to and not presently under mineral lease from Louisiana Department Of Transportation And Development on March 8, 2017, being more fully described as follows: Beginning at a point having Coordinates of X = 1,766,859.00 and Y = 533,804.00; thence East 17,866.00 feet to a point having Coordinates of X = 1,784,725.00 and Y = 533,804.00; thence South 12,021.00 feet to a point having Coordinates of X = 1,784,725.00 and Y = 521,783.00; thence West 17,866.00 feet to a point having Coordinates of X = 1,766,859.00 and Y = 521,783.00; thence North 12,021.00 feet to the point of beginning, and more particularly described as follows: All of Louisiana Highway No. 92 within the above described tract boundary, containing approximately 22.8 acres. All of Louisiana Highway No. 339 within the above described tract boundary, containing approximately 22.1 acres. All of Louisiana Highway No. 733 within the above described tract boundary, containing approximately 16.5 acres. Containing a total of approximately **61.4 acres**, all as more particularly outlined on a plat on file in the Office of Mineral Resources, Department of Natural Resources. The description is based on information provided by the State Agency regarding location and ownership of surface and mineral rights. All bearings, distances and coordinates, if applicable, are based on Louisiana Coordinate System of 1927, (North or South Zone).

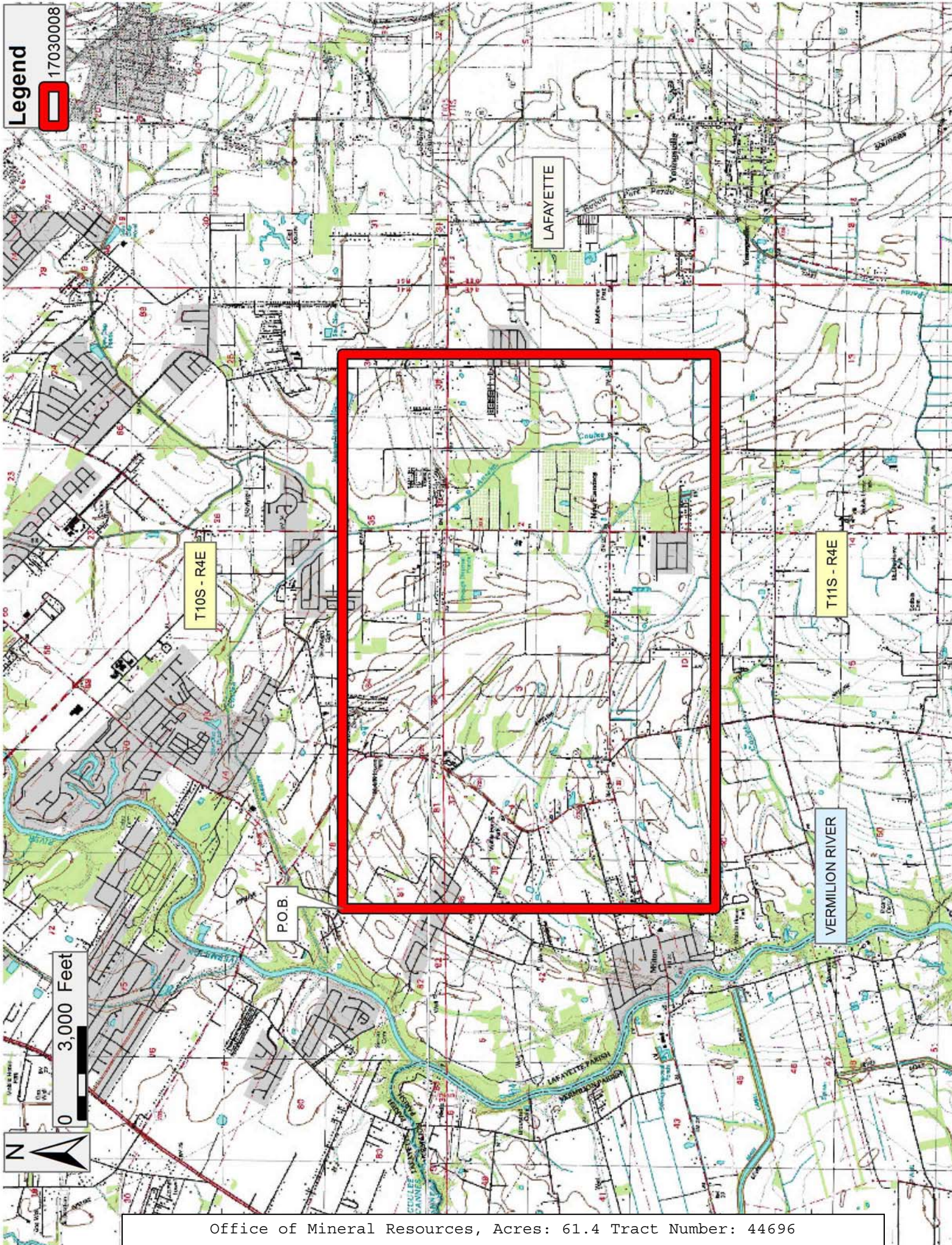
NOTE: The above description of the Tract nominated for the purpose of acquiring a mineral lease or a geophysical agreement has been provided and corrected, where required, exclusively by the nominating party. Any mineral lease or geophysical agreement selected from this Tract and awarded by the Louisiana State Mineral and Energy Board shall be without warranty of any kind, either express, implied or statutory including, but not limited to, title or the implied warranties of merchantability and fitness for a particular purpose.

An error or omission in the nominating party's Tract description may require that a State mineral lease or geophysical agreement be modified, canceled or abrogated due to the existence of conflicting leases, operating agreements, private claims or other future obligations or conditions within the Tract described. In such case, however, the Louisiana State Mineral and Energy Board shall not be obligated to refund any consideration paid by the Lessee prior to such modification, cancellation or abrogation including, but not limited to, bonuses, rentals and royalties.

NOTE: No surface operations will be performed on the property.

Applicant: ANGELLE & DONOHUE OIL & GAS PROPERTIES, INC. to Agency and by Resolution from the Louisiana Department Of Transportation And Development authorizing the Mineral Board to act in its behalf

Bidder	Cash Payment	Price/Acre	Rental	Oil	Gas	Other



Legend  17030008

0 3,000 Feet
N