

TRACT 44683 - St. Landry Parish, Louisiana

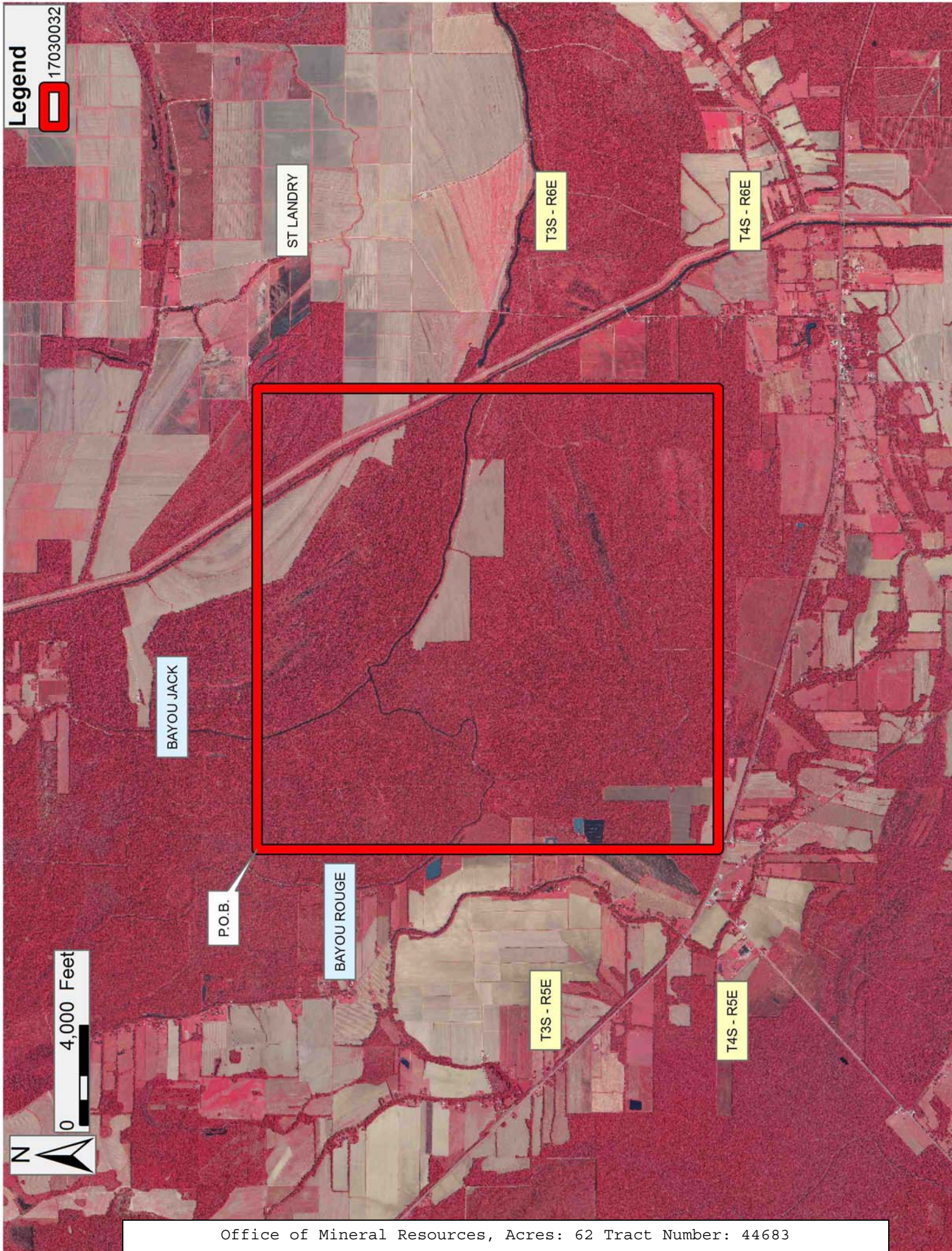
All of the lands now or formerly constituting the beds and bottoms of all water bodies of every nature and description as to which title is vested in the State of Louisiana, together with all islands arising therein and other lands formed by accretion or by reliction, where allowed by law, excepting tax adjudicated lands, and not presently under mineral lease on March 8, 2017, situated in St. Landry Parish, Louisiana, and more particularly described as follows: Beginning at a point having Coordinates of X = 1,799,423.68 and Y = 769,589.26; thence East 18,480.00 feet to a point having Coordinates of X = 1,817,903.68 and Y = 769,589.26; thence South 18,480.00 feet to a point having Coordinates of X = 1,817,903.68 and Y = 751,109.26; thence West 18,480.00 feet to a point having Coordinates of X = 1,799,423.68 and Y = 751,109.26; thence North 18,480.00 feet to the point of beginning, containing approximately **62 acres**, all as more particularly outlined on a plat on file in the Office of Mineral Resources, Department of Natural Resources. All bearings, distances and coordinates are based on Louisiana Coordinate System of 1927, (North or South Zone), where applicable.

NOTE: The above description of the Tract nominated for the purpose of acquiring a mineral lease or a geophysical agreement has been provided and corrected, where required, exclusively by the nominating party. Any mineral lease or geophysical agreement selected from this Tract and awarded by the Louisiana State Mineral and Energy Board shall be without warranty of any kind, either express, implied or statutory including, but not limited to, title or the implied warranties of merchantability and fitness for a particular purpose.

An error or omission in the nominating party's Tract description may require that a State mineral lease or geophysical agreement be modified, canceled or abrogated due to the existence of conflicting leases, operating agreements, private claims or other future obligations or conditions within the Tract described. In such case, however, the Louisiana State Mineral and Energy Board shall not be obligated to refund any consideration paid by the Lessee prior to such modification, cancellation or abrogation including, but not limited to, bonuses, rentals and royalties.

Applicant: TANNEBAUM RESOURCES CO.

Bidder	Cash Payment	Price/ Acre	Rental	Oil	Gas	Other



TRACT 44684 - St. Landry Parish, Louisiana

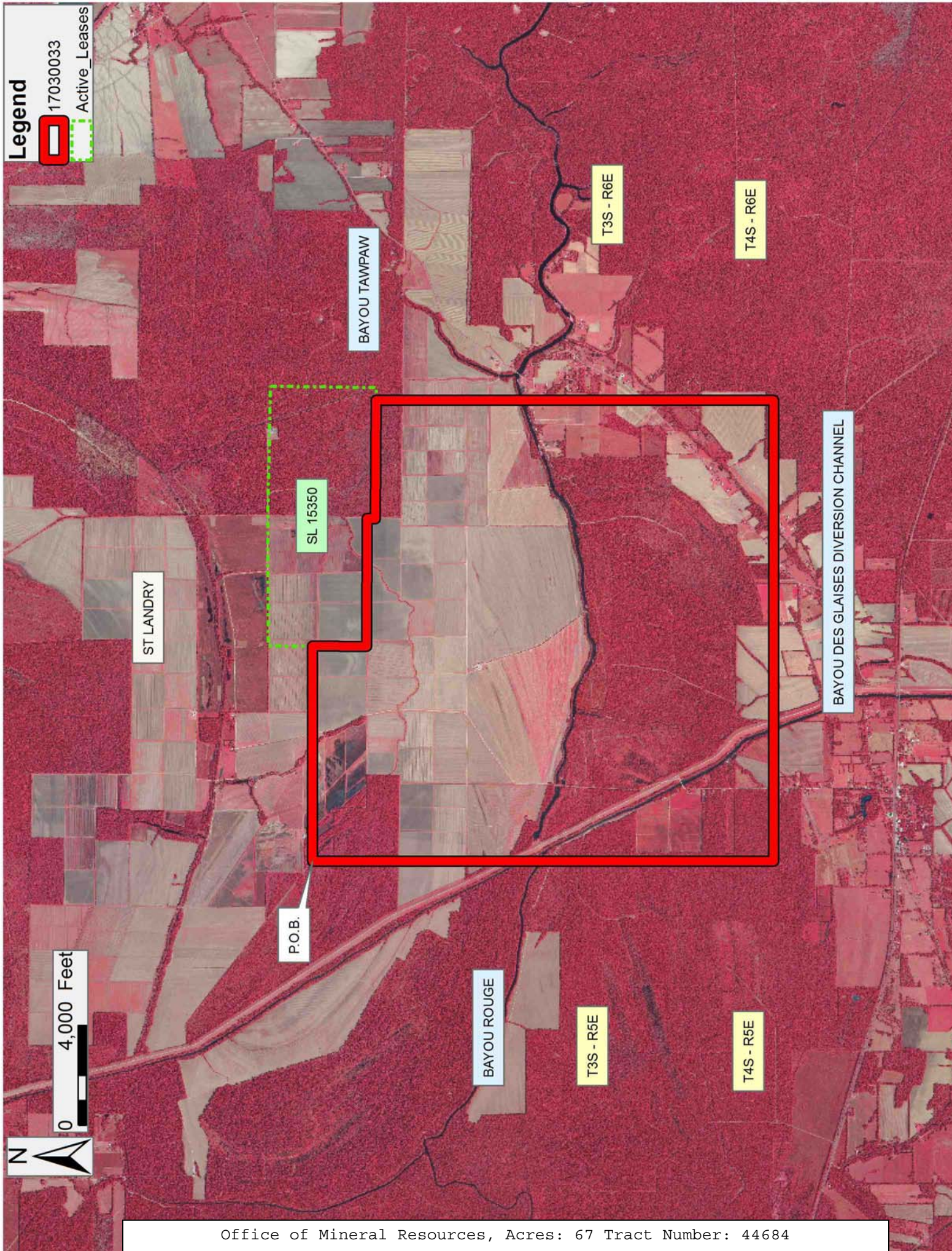
All of the lands now or formerly constituting the beds and bottoms of all water bodies of every nature and description as to which title is vested in the State of Louisiana, together with all islands arising therein and other lands formed by accretion or by reliction, where allowed by law, excepting tax adjudicated lands, and not presently under mineral lease on March 8, 2017, situated in St. Landry Parish, Louisiana, and more particularly described as follows: Beginning at a point having Coordinates of X = 1,817,903.68 and Y = 769,589.26; thence East approximately 8,625 feet to a point on the Western boundary line of State Lease No. 15350, as amended, having a Coordinate of Y = 769,589.26; thence along the boundary of said State Lease No.15350, as amended, the following: Southerly, Easterly, Southerly, and Easterly to a point having a Coordinate of X = 1,836,383.68; thence South approximately 15,927 feet to a point having Coordinates of X = 1,836,383.68 and Y = 751,109.26; thence West 18,480.00 feet to a point having Coordinates of X = 1,817,903.68 and Y = 751,109.26; North 18,480.00 feet to the point of beginning, containing approximately **67 acres**, all as more particularly outlined on a plat on file in the Office of Mineral Resources, Department of Natural Resources. All bearings, distances and coordinates are based on Louisiana Coordinate System of 1927, (North or South Zone), where applicable.

NOTE: The above description of the Tract nominated for the purpose of acquiring a mineral lease or a geophysical agreement has been provided and corrected, where required, exclusively by the nominating party. Any mineral lease or geophysical agreement selected from this Tract and awarded by the Louisiana State Mineral and Energy Board shall be without warranty of any kind, either express, implied or statutory including, but not limited to, title or the implied warranties of merchantability and fitness for a particular purpose.

An error or omission in the nominating party's Tract description may require that a State mineral lease or geophysical agreement be modified, canceled or abrogated due to the existence of conflicting leases, operating agreements, private claims or other future obligations or conditions within the Tract described. In such case, however, the Louisiana State Mineral and Energy Board shall not be obligated to refund any consideration paid by the Lessee prior to such modification, cancellation or abrogation including, but not limited to, bonuses, rentals and royalties.

Applicant: TANNEBAUM RESOURCES CO.

Bidder	Cash Payment	Price/ Acre	Rental	Oil	Gas	Other



TRACT 44685 - St. Landry Parish, Louisiana

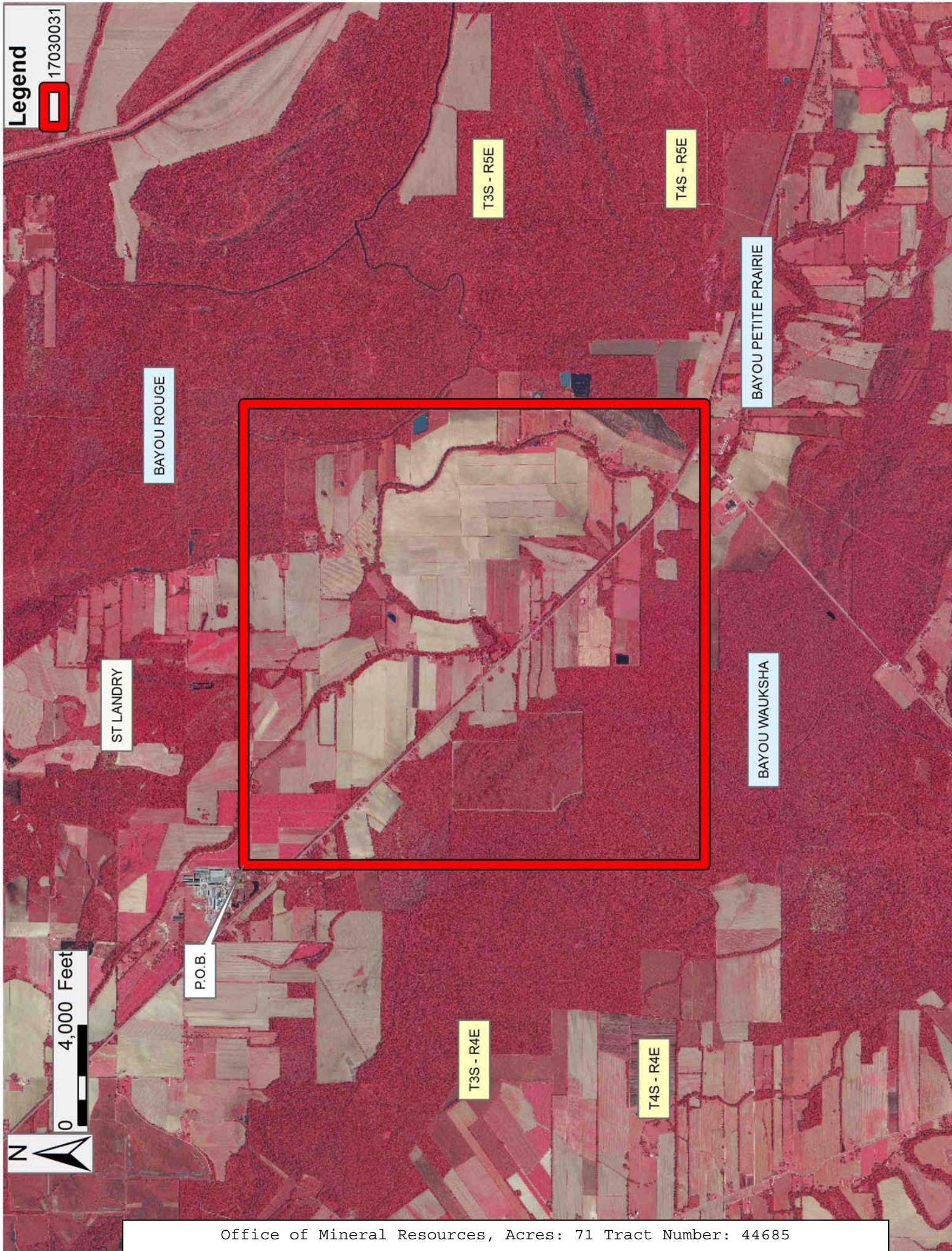
All of the lands now or formerly constituting the beds and bottoms of all water bodies of every nature and description as to which title is vested in the State of Louisiana, together with all islands arising therein and other lands formed by accretion or by reliction, where allowed by law, excepting tax adjudicated lands, and not presently under mineral lease on March 8, 2017, situated in St. Landry Parish, Louisiana, and more particularly described as follows: Beginning at a point having Coordinates of X = 1,780,943.68 and Y = 769,589.26; thence East 18,480.00 feet to a point having Coordinates of X = 1,799,423.68 and Y = 769,589.26; thence South 18,480.00 feet to a point having Coordinates of X = 1,799,423.68 and Y = 751,109.26; thence West 18,480.00 feet to a point having Coordinates of X = 1,780,943.68 and Y = 751,109.26; thence North 18,480.00 feet to the point of beginning, containing approximately **71 acres**, all as more particularly outlined on a plat on file in the Office of Mineral Resources, Department of Natural Resources. All bearings, distances and coordinates are based on Louisiana Coordinate System of 1927, (North or South Zone), where applicable.

NOTE: The above description of the Tract nominated for the purpose of acquiring a mineral lease or a geophysical agreement has been provided and corrected, where required, exclusively by the nominating party. Any mineral lease or geophysical agreement selected from this Tract and awarded by the Louisiana State Mineral and Energy Board shall be without warranty of any kind, either express, implied or statutory including, but not limited to, title or the implied warranties of merchantability and fitness for a particular purpose.

An error or omission in the nominating party's Tract description may require that a State mineral lease or geophysical agreement be modified, canceled or abrogated due to the existence of conflicting leases, operating agreements, private claims or other future obligations or conditions within the Tract described. In such case, however, the Louisiana State Mineral and Energy Board shall not be obligated to refund any consideration paid by the Lessee prior to such modification, cancellation or abrogation including, but not limited to, bonuses, rentals and royalties.

Bidder	Cash Payment	Price/ Acre	Rental	Oil	Gas	Other

Applicant: TANNEBAUM RESOURCES CO.



TRACT 44686 - St. Landry Parish, Louisiana

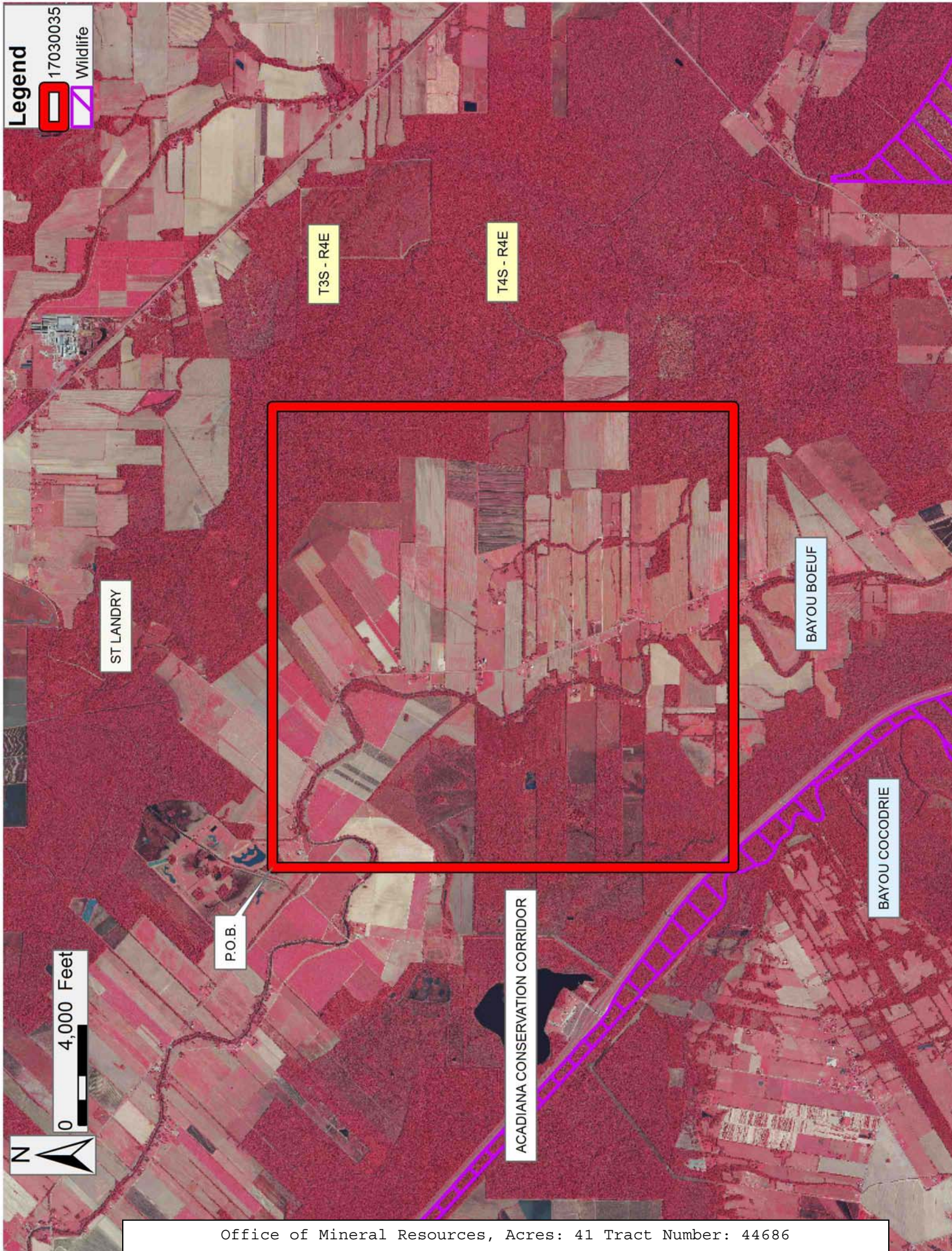
All of the lands now or formerly constituting the beds and bottoms of all water bodies of every nature and description as to which title is vested in the State of Louisiana, together with all islands arising therein and other lands formed by accretion or by reliction, where allowed by law, excepting tax adjudicated lands, and not presently under mineral lease on March 8, 2017, situated in St. Landry Parish, Louisiana, and more particularly described as follows: Beginning at a point having Coordinates of X = 1,758,686.58 and Y = 762,354.36; thence East 18,480.00 feet to a point having Coordinates of X = 1,777,166.58 and Y = 762,354.36; thence South 18,480.00 feet to a point having Coordinates of X = 1,777,166.58 and Y = 743,874.36; thence West 18,480.00 feet to a point having Coordinates of X = 1,758,686.58 and Y = 743,874.36; thence North 18,480.00 feet to the point of beginning, (This tract includes only waterbottoms claimed and owned by the state and specifically excludes any land which the state or Wildlife and Fisheries may claim or own and to which the mineral rights are vested in them), containing approximately **41 acres**, all as more particularly outlined on a plat on file in the Office of Mineral Resources, Department of Natural Resources. All bearings, distances and coordinates are based on Louisiana Coordinate System of 1927, (North or South Zone), where applicable.

NOTE: The above description of the Tract nominated for the purpose of acquiring a mineral lease or a geophysical agreement has been provided and corrected, where required, exclusively by the nominating party. Any mineral lease or geophysical agreement selected from this Tract and awarded by the Louisiana State Mineral and Energy Board shall be without warranty of any kind, either express, implied or statutory including, but not limited to, title or the implied warranties of merchantability and fitness for a particular purpose.

An error or omission in the nominating party's Tract description may require that a State mineral lease or geophysical agreement be modified, canceled or abrogated due to the existence of conflicting leases, operating agreements, private claims or other future obligations or conditions within the Tract described. In such case, however, the Louisiana State Mineral and Energy Board shall not be obligated to refund any consideration paid by the Lessee prior to such modification, cancellation or abrogation including, but not limited to, bonuses, rentals and royalties.

Applicant: TANNEBAUM RESOURCES CO.

Bidder	Cash Payment	Price/ Acre	Rental	Oil	Gas	Other



TRACT 44687 - St. Landry Parish, Louisiana

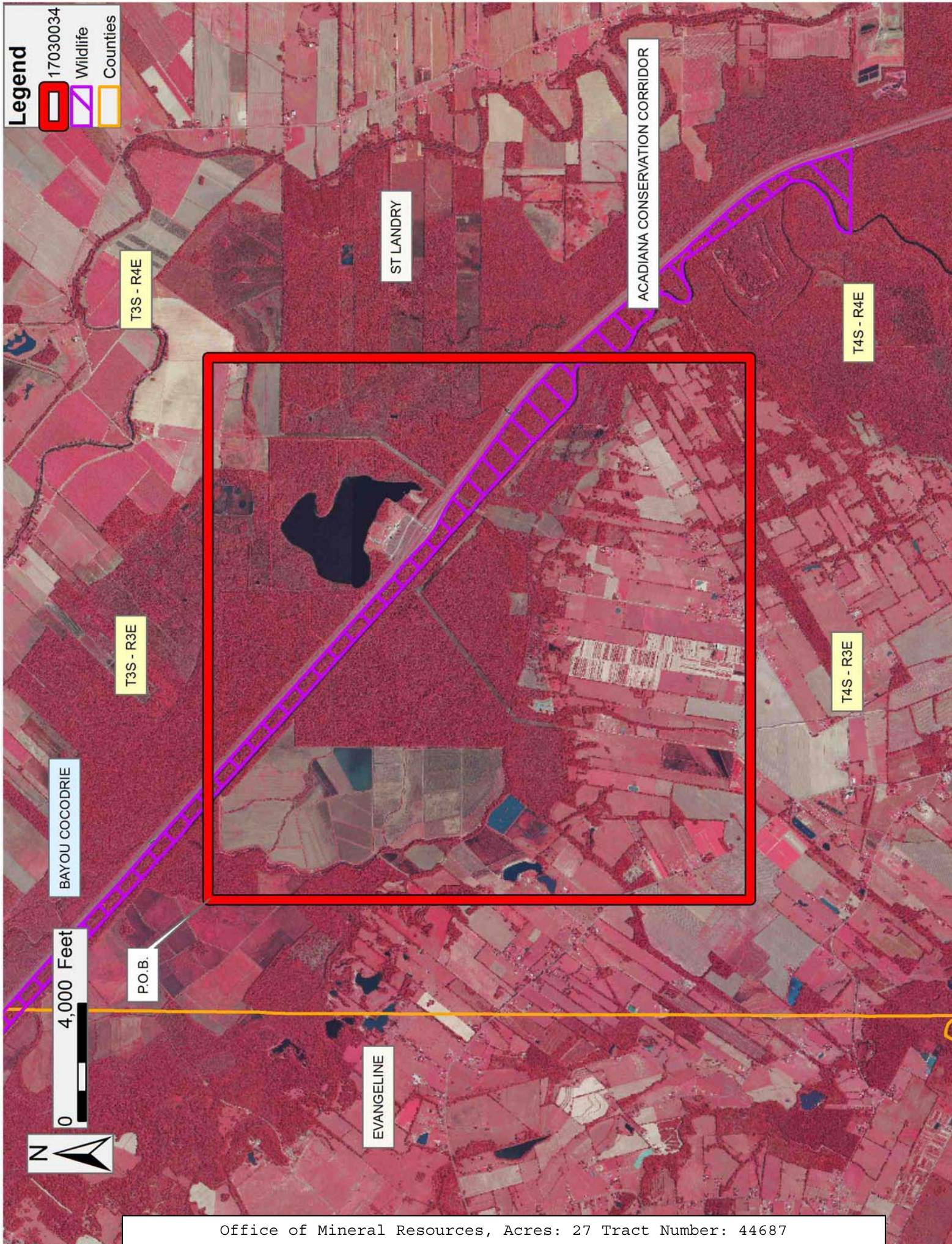
All of the lands now or formerly constituting the beds and bottoms of all water bodies of every nature and description as to which title is vested in the State of Louisiana, together with all islands arising therein and other lands formed by accretion or by reliction, where allowed by law, excepting tax adjudicated lands, and not presently under mineral lease on March 8, 2017, situated in St. Landry Parish, Louisiana, and more particularly described as follows: Beginning at a point having Coordinates of X = 1,740,206.58 and Y = 756,689.17; thence East 18,480.00 feet to a point having Coordinates of X = 1,758,686.58 and Y = 756,689.17; thence South 18,480.00 feet to a point having Coordinates of X = 1,758,686.58 and Y = 738,209.17; thence West 18,480.00 feet to a point having Coordinates of X = 1,740,206.58 and Y = 738,209.17; thence North 18,480.00 feet to the point of beginning, **LESS AND EXCEPT** any right, title, and interest in lands owned by and not under lease from the State of Louisiana, on behalf of the St. Landry Parish School Board, situated in Section 16, Township 4 South, Range 3 East, St. Landry Parish, Louisiana, contained within the above described tract, (This tract includes only waterbottoms claimed and owned by the state and specifically excludes any land which the state may claim or own and to which the mineral rights are vested in the state and also excludes any land which the state or Wildlife and Fisheries may claim or own and to which the mineral rights are vested in them), containing approximately **27 acres**, all as more particularly outlined on a plat on file in the Office of Mineral Resources, Department of Natural Resources. All bearings, distances and coordinates are based on Louisiana Coordinate System of 1927, (North or South Zone), where applicable.

NOTE: The above description of the Tract nominated for the purpose of acquiring a mineral lease or a geophysical agreement has been provided and corrected, where required, exclusively by the nominating party. Any mineral lease or geophysical agreement selected from this Tract and awarded by the Louisiana State Mineral and Energy Board shall be without warranty of any kind, either express, implied or statutory including, but not limited to, title or the implied warranties of merchantability and fitness for a particular purpose.

An error or omission in the nominating party's Tract description may require that a State mineral lease or geophysical agreement be modified, canceled or abrogated due to the existence of conflicting leases, operating agreements, private claims or other future obligations or conditions within the Tract described. In such case, however, the Louisiana State Mineral and Energy Board shall not be obligated to refund any consideration paid by the Lessee prior to such modification, cancellation or abrogation including, but not limited to, bonuses, rentals and royalties.

Applicant: TANNEBAUM RESOURCES CO.

Bidder	Cash Payment	Price/ Acre	Rental	Oil	Gas	Other



TRACT 44688 - Calcasieu Parish, Louisiana

All of the lands now or formerly constituting the beds and bottoms of all water bodies of every nature and description as to which title is vested in the State of Louisiana, together with all islands arising therein and other lands formed by accretion or by reliction, where allowed by law, excepting tax adjudicated lands, and not presently under mineral lease on March 8, 2017, situated in Calcasieu Parish, Louisiana, and more particularly described as follows: Beginning at a point having Coordinates of X = 1,435,629.41 and Y = 617,668.21; thence East 18,469.44 feet to a point having Coordinates of X = 1,454,098.85 and Y = 617,668.21; thence South 18,479.93 feet to a point having Coordinates of X = 1,454,098.85 and Y = 599,188.28; thence West 15,625.39 feet to Northeast corner of State Lease No. 21674 having Coordinates of X = 1,438,473.46 and Y = 599,188.28; thence West 2,854.61 feet along the North line of said State Lease No. 21674 to its Northwest corner, said corner also being a point on the East line of State Lease No. 15691 having Coordinates of X = 1,435,618.85 and Y = 599,188.28; thence North 00 degrees 48 minutes 15 seconds East 752.34 feet along the East line of said State Lease No. 15691 to its Northeast corner having Coordinates of X = 1,435,629.41 and Y = 599,940.55; thence North 17,727.66 feet to the point of beginning, **LESS AND EXCEPT** any right, title, and interest in lands owned by and not under lease from the State of Louisiana, on behalf of the Calcasieu Parish School Board, situated in Section 16, Township 8 South, Range 7 West, Calcasieu Parish, Louisiana, contained within the above described tract, containing approximately **259 acres**, all as more particularly outlined on a plat on file in the Office of Mineral Resources, Department of Natural Resources. All bearings, distances and coordinates are based on Louisiana Coordinate System of 1927, (North or South Zone), where applicable.

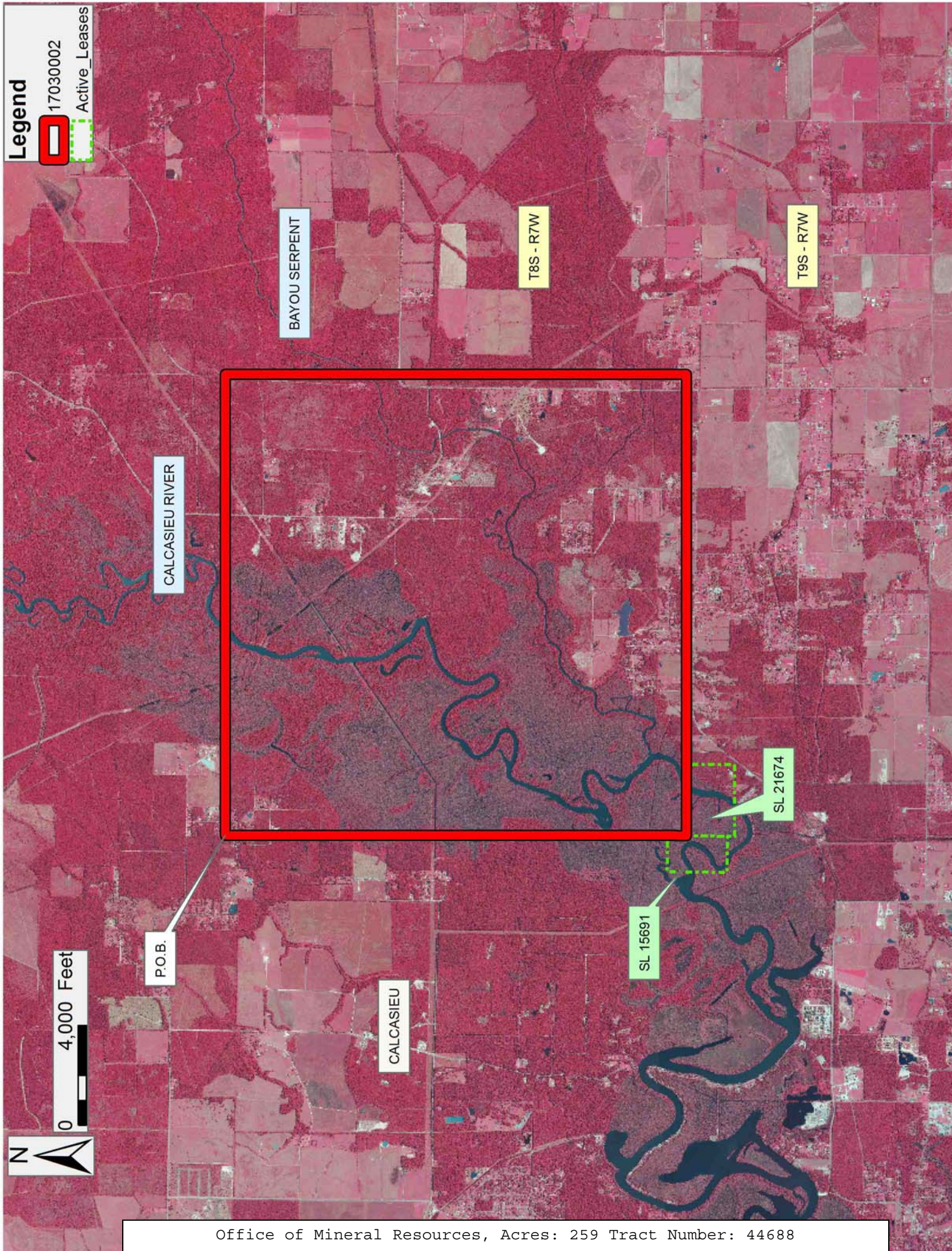
NOTE: The above description of the Tract nominated for the purpose of acquiring a mineral lease or a geophysical agreement has been provided and corrected, where required, exclusively by the nominating party. Any mineral lease or geophysical agreement selected from this Tract and awarded by the Louisiana State Mineral and Energy Board shall be without warranty of any kind, either express, implied or statutory including, but not limited to, title or the implied warranties of merchantability and fitness for a particular purpose.

An error or omission in the nominating party's Tract description may require that a State mineral lease or geophysical agreement be modified, canceled or abrogated due to the existence of conflicting leases, operating agreements, private claims or other future obligations or conditions within the Tract described. In such case, however, the Louisiana State Mineral and Energy Board shall not be obligated to refund any consideration paid by the Lessee prior to such modification, cancellation or abrogation including, but not limited to, bonuses, rentals and royalties.

NOTE: A portion of this tract is located on or adjacent to a Louisiana designated Natural and Scenic River. The applicant must obtain authorization from the Louisiana Department of Wildlife and Fisheries, Scenic Rivers Program prior to initiating any activities within or adjacent to the river, including, but not limited to, crossings by roads and pipelines, well sites, production facilities and water withdrawals.

Applicant: PINTAIL OIL & GAS

Bidder	Cash Payment	Price/ Acre	Rental	Oil	Gas	Other



TRACT 44689 - Acadia and Lafayette Parishes, Louisiana

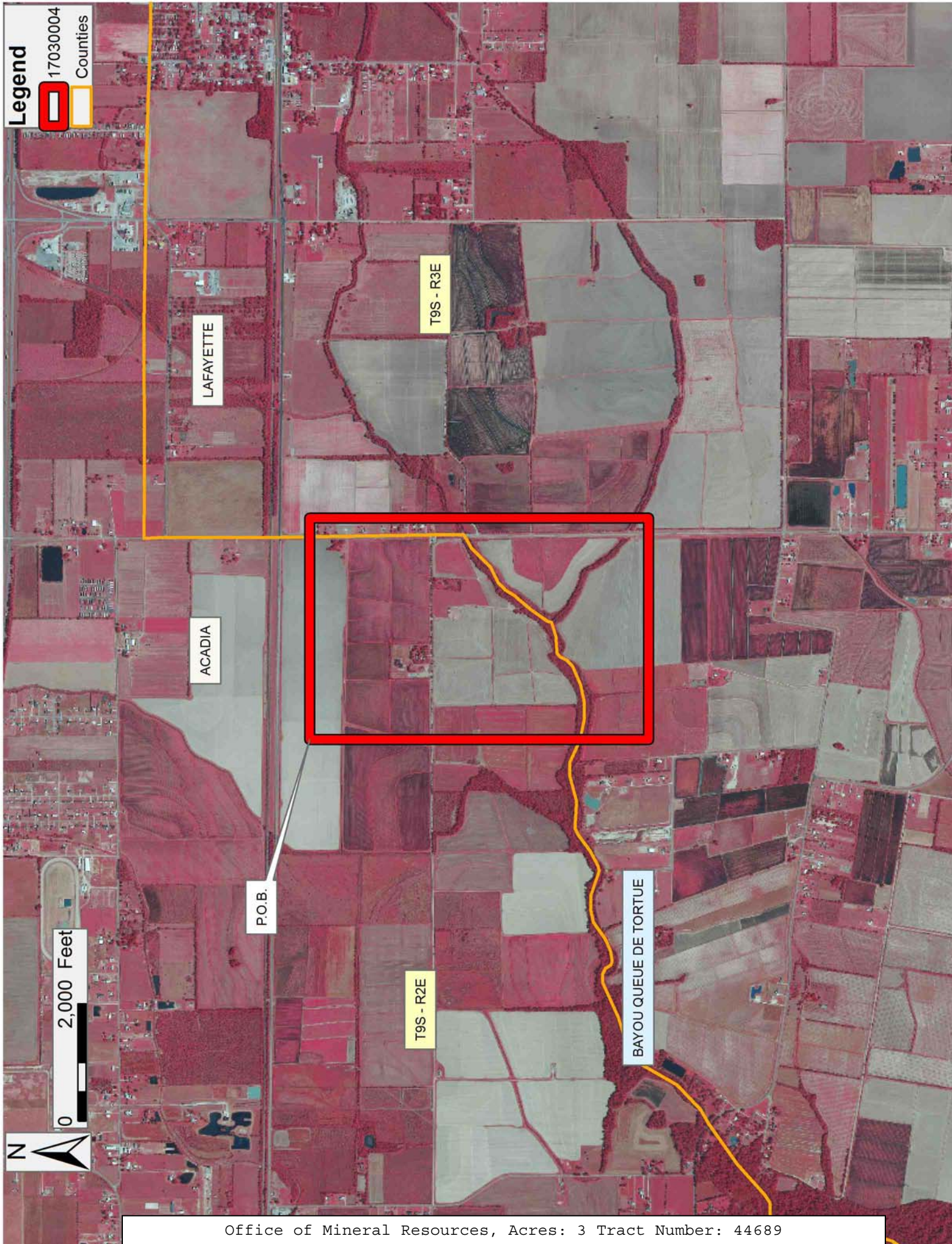
All of the lands now or formerly constituting the beds and bottoms of all water bodies of every nature and description as to which title is vested in the State of Louisiana, together with all islands arising therein and other lands formed by accretion or by reliction, where allowed by law, excepting tax adjudicated lands, and not presently under mineral lease on March 8, 2017, situated in Acadia and Lafayette Parishes, Louisiana, and more particularly described as follows: Beginning at a point having Coordinates of X = 1,719,721.56 and Y = 570,784.08; thence East 3,769.72 feet to a point having Coordinates of X = 1,723,491.28 and Y = 570,784.08; thence South 5,775.74 feet to a point having Coordinates of X = 1,723,491.28 and Y = 565,008.34; thence West 3,769.72 feet to a point having Coordinates of X = 1,719,721.56 and Y = 565,008.34; thence North 5,775.74 feet to the point of beginning, containing approximately **3 acres**, all as more particularly outlined on a plat on file in the Office of Mineral Resources, Department of Natural Resources. All bearings, distances and coordinates are based on Louisiana Coordinate System of 1927, (North or South Zone), where applicable.

NOTE: The above description of the Tract nominated for the purpose of acquiring a mineral lease or a geophysical agreement has been provided and corrected, where required, exclusively by the nominating party. Any mineral lease or geophysical agreement selected from this Tract and awarded by the Louisiana State Mineral and Energy Board shall be without warranty of any kind, either express, implied or statutory including, but not limited to, title or the implied warranties of merchantability and fitness for a particular purpose.

An error or omission in the nominating party's Tract description may require that a State mineral lease or geophysical agreement be modified, canceled or abrogated due to the existence of conflicting leases, operating agreements, private claims or other future obligations or conditions within the Tract described. In such case, however, the Louisiana State Mineral and Energy Board shall not be obligated to refund any consideration paid by the Lessee prior to such modification, cancellation or abrogation including, but not limited to, bonuses, rentals and royalties.

Bidder	Cash Payment	Price/Acre	Rental	Oil	Gas	Other

Applicant: WHITE SANDS LAND SERVICES, L.L.C.



TRACT 44690 - Acadia and Lafayette Parishes, Louisiana

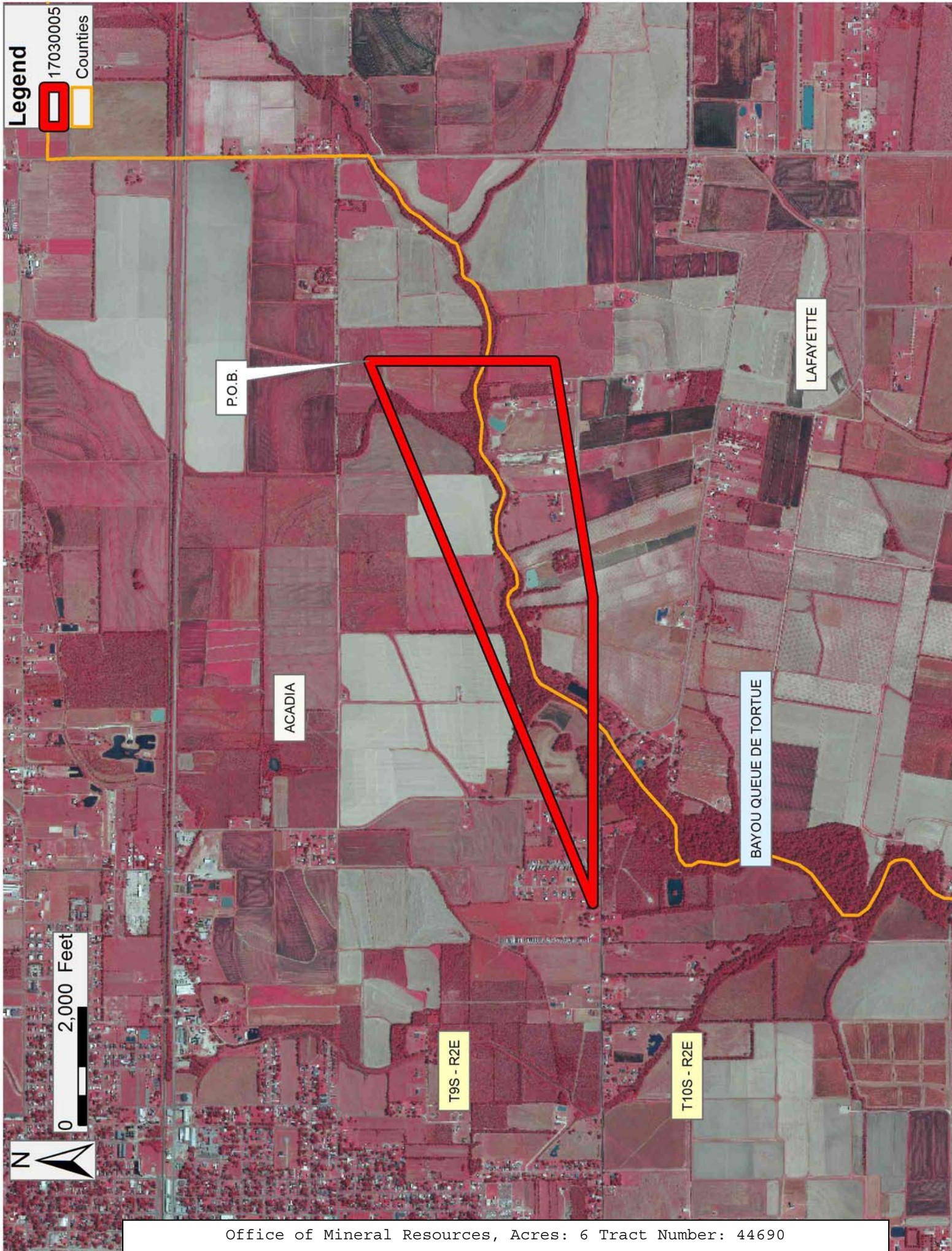
All of the lands now or formerly constituting the beds and bottoms of all water bodies of every nature and description as to which title is vested in the State of Louisiana, together with all islands arising therein and other lands formed by accretion or by reliction, where allowed by law, excepting tax adjudicated lands, and not presently under mineral lease on March 8, 2017, situated in Acadia and Lafayette Parishes, Louisiana, and more particularly described as follows: Beginning at a point having Coordinates of X = 1,719,721.56 and Y = 568,157.21; thence South 3,148.87 feet to a point having Coordinates of X = 1,719,721.56 and Y = 565,008.34; thence South 80 degrees 41 minutes 00 seconds West 4,066.57 feet to a point having Coordinates of X = 1,715,708.63 and Y = 564,350.00; thence West 5,200.01 feet to a point having Coordinates of X = 1,710,508.62 and Y = 564,350.00; thence North 67 degrees 32 minutes 50 seconds East 9,968.61 feet to the point of beginning, containing approximately **6 acres**, all as more particularly outlined on a plat on file in the Office of Mineral Resources, Department of Natural Resources. All bearings, distances and coordinates are based on Louisiana Coordinate System of 1927, (North or South Zone), where applicable.

NOTE: The above description of the Tract nominated for the purpose of acquiring a mineral lease or a geophysical agreement has been provided and corrected, where required, exclusively by the nominating party. Any mineral lease or geophysical agreement selected from this Tract and awarded by the Louisiana State Mineral and Energy Board shall be without warranty of any kind, either express, implied or statutory including, but not limited to, title or the implied warranties of merchantability and fitness for a particular purpose.

An error or omission in the nominating party's Tract description may require that a State mineral lease or geophysical agreement be modified, canceled or abrogated due to the existence of conflicting leases, operating agreements, private claims or other future obligations or conditions within the Tract described. In such case, however, the Louisiana State Mineral and Energy Board shall not be obligated to refund any consideration paid by the Lessee prior to such modification, cancellation or abrogation including, but not limited to, bonuses, rentals and royalties.

Applicant: WHITE SANDS LAND SERVICES, L.L.C.

Bidder	Cash Payment	Price/ Acre	Rental	Oil	Gas	Other



Legend



P.O.B.

ACADIA

LAFAYETTE

BAYOU QUEUE DE TORTUE

T9S - R2E

T10S - R2E

TRACT 44691 - Acadia and Lafayette Parishes, Louisiana

All of the lands now or formerly constituting the beds and bottoms of all water bodies of every nature and description as to which title is vested in the State of Louisiana, together with all islands arising therein and other lands formed by accretion or by reliction, where allowed by law, excepting tax adjudicated lands, and not presently under mineral lease on March 8, 2017, situated in Acadia and Lafayette Parishes, Louisiana, and more particularly described as follows: Beginning at a point having Coordinates of X = 1,710,508.62 and Y = 564,350.00; thence East 5,200.01 feet to a point having Coordinates of X = 1,715,708.63 and Y = 564,350.00; thence South 33 degrees 45 minutes 33 seconds West 5,953.95 feet to the Northeast corner of State Lease No. 20920, having Coordinates of X = 1,712,400.00 and Y = 559,400.00; thence West 5,200.00 feet along the Northern boundary of said State Lease No. 20920 to its Northwest corner, having Coordinates of X = 1,707,200.00 and Y = 559,400.00; thence North 33 degrees 45 minutes 33 seconds East 5,953.95 feet to the point of beginning, containing approximately **7 acres**, all as more particularly outlined on a plat on file in the Office of Mineral Resources, Department of Natural Resources. All bearings, distances and coordinates are based on Louisiana Coordinate System of 1927, (North or South Zone), where applicable.

NOTE: The above description of the Tract nominated for the purpose of acquiring a mineral lease or a geophysical agreement has been provided and corrected, where required, exclusively by the nominating party. Any mineral lease or geophysical agreement selected from this Tract and awarded by the Louisiana State Mineral and Energy Board shall be without warranty of any kind, either express, implied or statutory including, but not limited to, title or the implied warranties of merchantability and fitness for a particular purpose.

An error or omission in the nominating party's Tract description may require that a State mineral lease or geophysical agreement be modified, canceled or abrogated due to the existence of conflicting leases, operating agreements, private claims or other future obligations or conditions within the Tract described. In such case, however, the Louisiana State Mineral and Energy Board shall not be obligated to refund any consideration paid by the Lessee prior to such modification, cancellation or abrogation including, but not limited to, bonuses, rentals and royalties.

Applicant: WHITE SANDS LAND SERVICES, L.L.C.

Bidder	Cash Payment	Price/ Acre	Rental	Oil	Gas	Other

