

**TRACT 44526 - East Baton Rouge Parish, Louisiana**

All of the lands now or formerly constituting the beds and bottoms of all water bodies of every nature and description as to which title is vested in the State of Louisiana, together with all islands arising therein and other lands formed by accretion or by reliction, where allowed by law, excepting tax adjudicated lands, and not presently under mineral lease on March 9, 2016, situated in East Baton Rouge Parish, Louisiana, and more particularly described as follows: Beginning at a point on the Northeast corner of State Lease No. 18804, as amended and the Southeast corner of State Lease No. 21501 having Coordinates of X = 2,018,987.42 and Y = 697,710.68; thence Northeasterly, approximately 3,320.67 feet along the east boundary of State Lease No. 21501 having Coordinates of X = 2,019,456.17; thence South 61 degrees 25 minutes 24 seconds East 6,872.61 feet to the Northeast corner of State Lease No. 21107 having Coordinates of X = 2,025,491.55 and Y = 697,710.71; thence South 89 degrees 59 minutes 59 seconds West 6,504.12 feet along the north boundary of said State Lease No. 21107 to the point of beginning, (This tract includes only waterbottoms claimed and owned by the state and specifically excludes any land which the state may claim or own and to which the mineral rights are vested in the state, containing approximately **52 acres**, all as more particularly outlined on a plat on file in the Office of Mineral Resources, Department of Natural Resources. All bearings, distances and coordinates are based on Louisiana Coordinate System of 1927, (North or South Zone), where applicable.

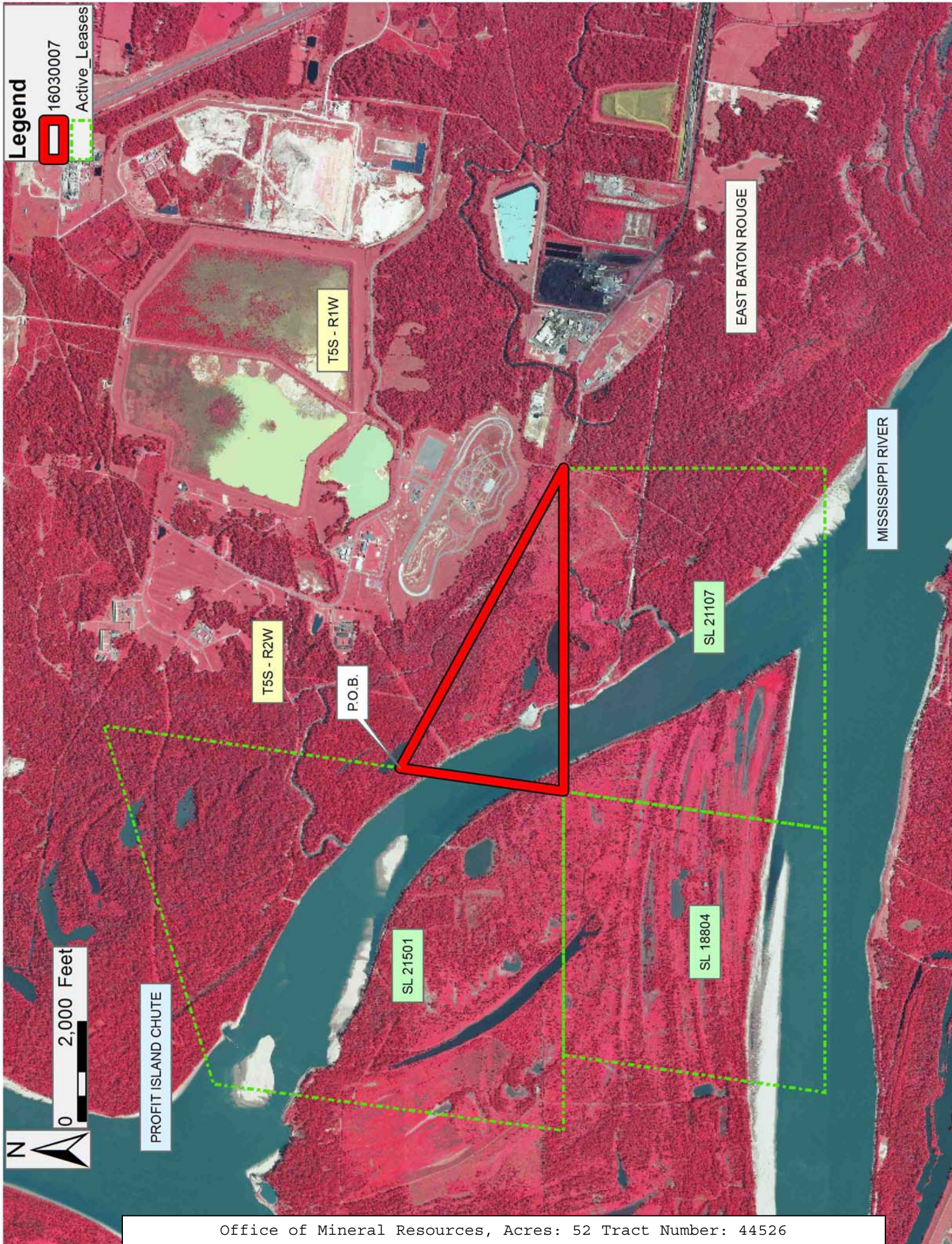
NOTE: The above description of the Tract nominated for the purpose of acquiring a mineral lease or a geophysical agreement has been provided and corrected, where required, exclusively by the nominating party. Any mineral lease or geophysical agreement selected from this Tract and awarded by the Louisiana State Mineral and Energy Board shall be without warranty of any kind, either express, implied or statutory including, but not limited to, title or the implied warranties of merchantability and fitness for a particular purpose.

An error or omission in the nominating party's Tract description may require that a State mineral lease or geophysical agreement be modified, canceled or abrogated due to the existence of conflicting leases, operating agreements, private claims or other future obligations or conditions within the Tract described. In such case, however, the Louisiana State Mineral and Energy Board shall not be obligated to refund any consideration paid by the Lessee prior to such modification, cancellation or abrogation including, but not limited to, bonuses, rentals and royalties.

Applicant: LESLIE M. COOPER

Bidder	Cash Payment	Price/ Acre	Rental	Oil	Gas	Other







#### **TRACT 44527 - Calcasieu Parish, Louisiana**

All of the lands now or formerly constituting the beds and bottoms of all water bodies of every nature and description as to which title is vested in the State of Louisiana, together with all islands arising therein and other lands formed by accretion or by reliction, where allowed by law, excepting tax adjudicated lands, and not presently under mineral lease on March 9, 2016, situated in Calcasieu Parish, Louisiana, and more particularly described as follows: Beginning at a point having Coordinates of X = 1,435,629.41 and Y = 611,100.73; thence East 4,833.28 feet to the Southwest corner of State Lease No. 21298 having Coordinates of X = 1,440,462.69 and Y = 611,100.73; thence East 7,844.71 feet along the south line of said State Lease No. 21298 to its Southeast corner having Coordinates of X = 1,448,307.40 and Y = 611,100.73; ^thence East 5,768.31 feet to a point having Coordinates of X = 1,454,075.71 and Y = 611,100.73; thence South 16,600.73 feet to a point having Coordinates of X = 1,454,075.71 and Y = 594,500.00; thence West 18,480.00 feet to a point having Coordinates of X = 1,435,595.71 and Y = 594,500.00; thence North 3,040.79 feet to the Southeast corner of State Lease No. 15691, as amended, having Coordinates of X = 1,435,595.71 and Y = 597,540.79; thence North 00 degrees 48 minutes 16 seconds East 2,400.00 feet along the East line of said State Lease No. 15691, as amended, to its Northeast corner having Coordinates of X = 1,435,629.41 and Y = 599,940.55; thence North 11,160.17 feet to the Point of Beginning, (This tract includes only waterbottoms claimed and owned by the state and specifically excludes any land which the state may claim or own and to which the mineral rights are vested in the state), containing approximately **232 acres**, all as more particularly outlined on a plat on file in the Office of Mineral Resources, Department of Natural Resources. All bearings, distances and coordinates are based on Louisiana Coordinate System of 1927, (North or South Zone), where applicable.

NOTE: The above description of the Tract nominated for the purpose of acquiring a mineral lease or a geophysical agreement has been provided and corrected, where required, exclusively by the nominating party. Any mineral lease or geophysical agreement selected from this Tract and awarded by the Louisiana State Mineral and Energy Board shall be without warranty of any kind, either express, implied or statutory including, but not limited to, title or the implied warranties of merchantability and fitness for a particular purpose.

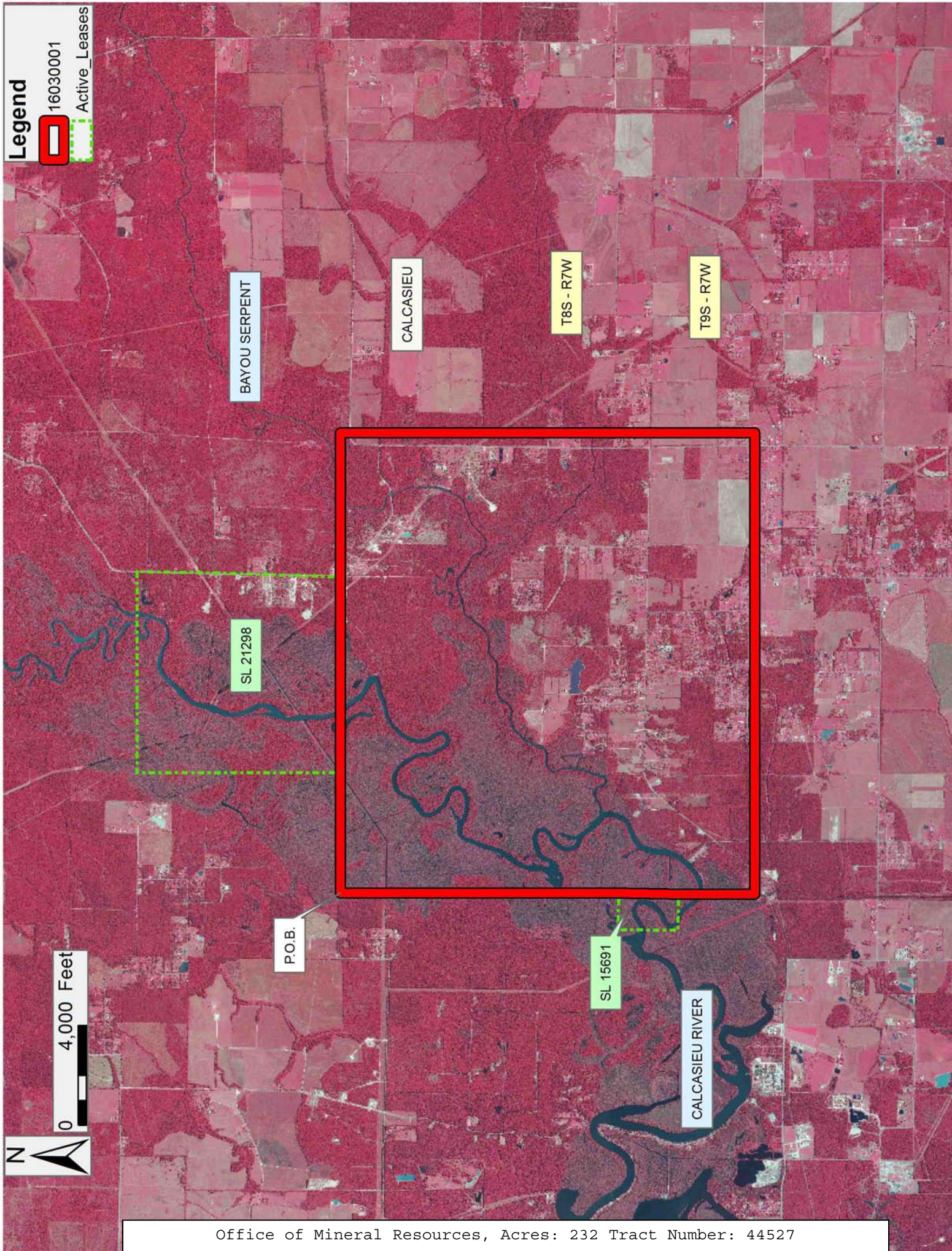
An error or omission in the nominating party's Tract description may require that a State mineral lease or geophysical agreement be modified, canceled or abrogated due to the existence of conflicting leases, operating agreements, private claims or other future obligations or conditions within the Tract described. In such case, however, the Louisiana State Mineral and Energy Board shall not be obligated to refund any consideration paid by the Lessee prior to such modification, cancellation or abrogation including, but not limited to, bonuses, rentals and royalties.

NOTE: A portion of this tract is located on or adjacent to a Louisiana designated Natural and Scenic River. The applicant must obtain authorization from the Louisiana Department of Wildlife and Fisheries, Scenic Rivers Program prior to initiating any activities within or adjacent to the river, including, but not limited to, crossings by roads and pipelines, well sites, production facilities and water withdrawals.

Applicant: TECHE OIL & GAS GROUP, LLC

Bidder	Cash Payment	Price/ Acre	Rental	Oil	Gas	Other







**TRACT 44528 - Terrebonne Parish, Louisiana**

All of the lands now or formerly constituting the beds and bottoms of all water bodies of every nature and description as to which title is vested in the State of Louisiana, together with all islands arising therein and other lands formed by accretion or by reliction, where allowed by law, excepting tax adjudicated lands, and not presently under mineral lease on March 9, 2016, situated in Terrebonne Parish, Louisiana, and more particularly described as follows: Beginning at a point having Coordinates of X = 2,207,674.00 and Y = 253,175.00; thence North 10,000.00 feet to a point having Coordinates of X = 2,207,674.00 and Y = 263,175.00; thence East 6,895.00 feet to a point having Coordinates of X = 2,214,569.00 and Y = 263,175.00; thence South 10,000.00 feet to a point having Coordinates of X = 2,214,569.00 and Y = 253,175.00; thence West 6,895.00 feet to the point of beginning, containing approximately **1,234 acres**, all as more particularly outlined on a plat on file in the Office of Mineral Resources, Department of Natural Resources. All bearings, distances and coordinates are based on Louisiana Coordinate System of 1927, (North or South Zone), where applicable.

NOTE: The above description of the Tract nominated for the purpose of acquiring a mineral lease or a geophysical agreement has been provided and corrected, where required, exclusively by the nominating party. Any mineral lease or geophysical agreement selected from this Tract and awarded by the Louisiana State Mineral and Energy Board shall be without warranty of any kind, either express, implied or statutory including, but not limited to, title or the implied warranties of merchantability and fitness for a particular purpose.

An error or omission in the nominating party's Tract description may require that a State mineral lease or geophysical agreement be modified, canceled or abrogated due to the existence of conflicting leases, operating agreements, private claims or other future obligations or conditions within the Tract described. In such case, however, the Louisiana State Mineral and Energy Board shall not be obligated to refund any consideration paid by the Lessee prior to such modification, cancellation or abrogation including, but not limited to, bonuses, rentals and royalties.

NOTE: The State of Louisiana does hereby reserve, and this lease shall be subject to, the imprescriptible right of surface use in the nature of a servitude in favor of the Department of Natural Resources, including its Offices and Commissions, for the sole purpose of implementing, constructing, servicing and maintaining approved coastal zone management and/or restoration projects. Utilization of any and all rights derived under this lease by the mineral lessee, its agents, successors or assigns, shall not interfere with nor hinder the reasonable surface use by the Department of Natural Resources, its Offices or Commissions, as herein above reserved.

Applicant: ROBERT A. SCHROEDER, INC.

Bidder	Cash Payment	Price/ Acre	Rental	Oil	Gas	Other





**TRACT 44529 - Plaquemines Parish, Louisiana**

All of the lands now or formerly constituting the beds and bottoms of all water bodies of every nature and description as to which title is vested in the State of Louisiana, together with all islands arising therein and other lands formed by accretion or by reliction, where allowed by law, excepting tax adjudicated lands, and not presently under mineral lease on March 9, 2016, situated in Plaquemines Parish, Louisiana, and more particularly described as follows: Beginning at a point having Coordinates of X = 2,562,999.00 and Y = 252,700.00, said point being the Northwest corner of State Lease No. 21071; thence along the Western boundary of said State Lease No. 21071 the following: South 3,978.00 feet to a point having Coordinates of X = 2,562,999.00 and Y = 248,722.00, East 1,265.00 feet to a point having Coordinates of X = 2,564,264.00 and Y = 248,722.00, South 1,358.00 feet to a point having Coordinates of X = 2,564,264.00 and Y = 247,364.00, South 63 degrees 58 minutes 21 seconds East 1,620.33 feet to a point having Coordinates of X = 2,565,720.00 and Y = 246,653.00, and South approximately 827 feet to a point of intersection with a Western boundary of State Lease No. 192, as amended; thence along the meanders of said State Lease No. 192 the following: Southwesterly, Southerly and Southeasterly to a point of intersection with the Northern boundary of State Lease No. 3212; thence along the boundary of said State Lease No. 3212 the following: Westerly approximately 4,294 feet, and Southerly approximately 355 feet; thence Westerly approximately 6,500 feet to a point having Coordinates of X = 2,554,105.29 and Y = 241,887.48; thence North 11,769.34 feet to a point having Coordinates of X = 2,554,105.29 and Y = 253,656.82; thence East 15,914.71 feet to a point having Coordinates of X = 2,570,020.00 and Y = 253,656.82; thence South 956.82 feet to a point having Coordinates of X = 2,570,020.00 and Y = 252,700.00, said point being the Northeast corner of said State Lease No. 21071; thence West 7,021.00 feet along the Northern boundary of said State Lease No. 21071 to the point of beginning, **LESS AND EXCEPT** that portion, if any of State Lease No. 192, as amended, and State Lease No. 3212 that may lie within the above described tract, containing approximately **2,059 acres**, all as more particularly outlined on a plat on file in the Office of Mineral Resources, Department of Natural Resources. All bearings, distances and coordinates are based on Louisiana Coordinate System of 1927, (North or South Zone), where applicable.

NOTE: The above description of the Tract nominated for the purpose of acquiring a mineral lease or a geophysical agreement has been provided and corrected, where required, exclusively by the nominating party. Any mineral lease or geophysical agreement selected from this Tract and awarded by the Louisiana State Mineral and Energy Board shall be without warranty of any kind, either express, implied or statutory including, but not limited to, title or the implied warranties of merchantability and fitness for a particular purpose.

An error or omission in the nominating party's Tract description may require that a State mineral lease or geophysical agreement be modified,

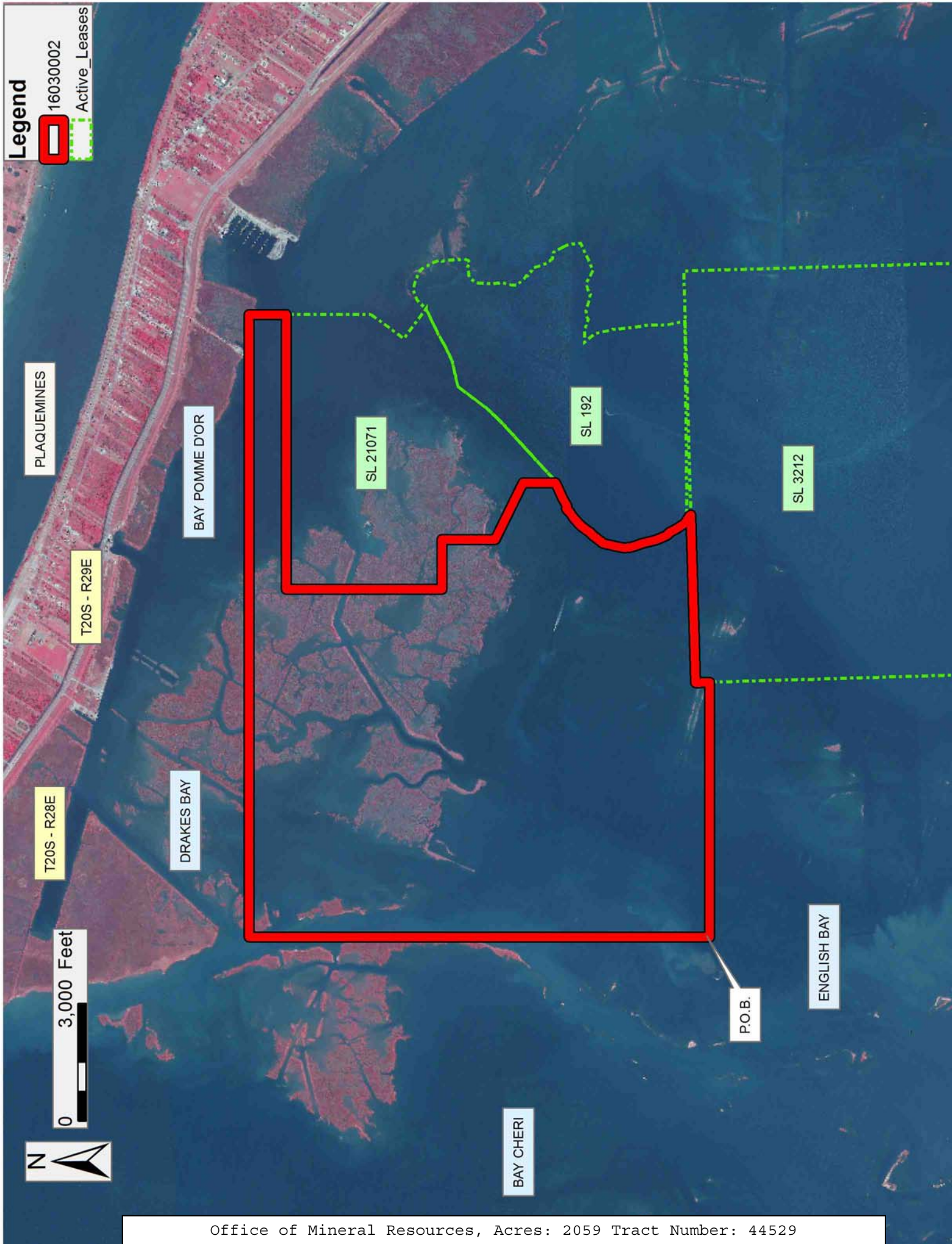
canceled or abrogated due to the existence of conflicting leases, operating agreements, private claims or other future obligations or conditions within the Tract described. In such case, however, the Louisiana State Mineral and Energy Board shall not be obligated to refund any consideration paid by the Lessee prior to such modification, cancellation or abrogation including, but not limited to, bonuses, rentals and royalties.

NOTE: The State of Louisiana does hereby reserve, and this lease shall be subject to, the imprescriptible right of surface use in the nature of a servitude in favor of the Department of Natural Resources, including its Offices and Commissions, for the sole purpose of implementing, constructing, servicing and maintaining approved coastal zone management and/or restoration projects. Utilization of any and all rights derived under this lease by the mineral lessee, its agents, successors or assigns, shall not interfere with nor hinder the reasonable surface use by the Department of Natural Resources, its Offices or Commissions, as herein above reserved.

Applicant: ROBERT A. SCHROEDER, INC.

Bidder	Cash Payment	Price/ Acre	Rental	Oil	Gas	Other





**TRACT 44530 - Terrebonne Parish, Louisiana**

All of the lands now or formerly constituting the beds and bottoms of all water bodies of every nature and description as to which title is vested in the State of Louisiana, together with all islands arising therein and other lands formed by accretion or by reliction, where allowed by law, excepting tax adjudicated lands, and not presently under mineral lease on March 9, 2016, situated in Terrebonne Parish, Louisiana, and more particularly described as follows: Beginning at a point having Coordinates of X = 2,207,674.00 and Y = 253,175.00; thence East 10,336.00 feet to a point having Coordinates of X = 2,218,010.00 and Y = 253,175.00; thence South 02 degrees 05 minutes 23 seconds West 877.58 feet to a point having Coordinates of X = 2,217,978.00 and Y = 252,298.00; thence South 05 degrees 55 minutes 48 seconds West 909.87 feet to a point having Coordinates of X = 2,217,884.00 and Y = 251,393.00; thence South 16 degrees 11 minutes 21 seconds West 968.40 feet to a point having Coordinates of X = 2,217,614.00 and Y = 250,463.00; thence South 31 degrees 38 minutes 41 seconds West 634.31 feet to a point having Coordinates of X = 2,217,281.21 and Y = 249,923.00; thence South 30 degrees 56 minutes 16 seconds West 1,383.54 feet to a point having Coordinates of X = 2,216,569.92 and Y = 248,736.30; thence South 44 degrees 43 minutes 08 seconds West 1,067.47 feet to a point having Coordinates of X = 2,215,818.82 and Y = 247,977.79; thence South 37 degrees 09 minutes 53 seconds West 1,082.77 feet to a point having Coordinates of X = 2,215,164.71 and Y = 247,114.93; thence South 41 degrees 02 minutes 59 seconds West 1,080.00 feet to a point having Coordinates of X = 2,214,455.46 and Y = 246,300.46; thence South 45 degrees 18 minutes 01 seconds West 281.92 feet to a point having Coordinates of X = 2,214,255.07 and Y = 246,102.16; thence South 44 degrees 03 minutes 23 seconds West 776.67 feet to a point having Coordinates of X = 2,213,715.00 and Y = 245,544.00; thence South 42 degrees 42 minutes 55 seconds West 549.86 feet to a point having Coordinates of X = 2,213,342.00 and Y = 245,140.00; thence West 5,668.00 feet to a point having Coordinates of X = 2,207,674.00 and Y = 245,140.00; thence North 8,035.00 feet to the point of beginning, containing approximately **1,158 acres**, all as more particularly outlined on a plat on file in the Office of Mineral Resources, Department of Natural Resources. All bearings, distances and coordinates are based on Louisiana Coordinate System of 1927, (North or South Zone), where applicable.

NOTE: The above description of the Tract nominated for the purpose of acquiring a mineral lease or a geophysical agreement has been provided and corrected, where required, exclusively by the nominating party. Any mineral lease or geophysical agreement selected from this Tract and awarded by the Louisiana State Mineral and Energy Board shall be without warranty of any kind, either express, implied or statutory including, but not limited to, title or the implied warranties of merchantability and fitness for a particular purpose.

An error or omission in the nominating party's Tract description may require that a State mineral lease or geophysical agreement be modified, canceled or abrogated due to the existence of conflicting leases, operating agreements, private claims or other future obligations or conditions within the Tract described. In such case, however, the Louisiana State Mineral and Energy Board shall not be obligated to refund any consideration paid by the Lessee prior to such modification, cancellation or abrogation including, but not limited to, bonuses, rentals and royalties.

NOTE: The State of Louisiana does hereby reserve, and this lease shall be subject to, the imprescriptible right of surface use in the nature of a servitude in favor of the Department of Natural Resources, including its Offices and Commissions, for the sole purpose of implementing, constructing, servicing and maintaining approved coastal zone management and/or restoration projects. Utilization of any and all rights derived under this lease by the mineral lessee, its agents, successors or assigns, shall not interfere with nor hinder the reasonable surface use by the Department of Natural Resources, its Offices or Commissions, as herein above reserved.

Applicant: ROBERT A. SCHROEDER, INC.

Bidder	Cash Payment	Price/ Acre	Rental	Oil	Gas	Other





**TRACT 44531 - Plaquemines Parish, Louisiana**

All of the lands now or formerly constituting the beds and bottoms of all water bodies of every nature and description as to which title is vested in the State of Louisiana, together with all islands arising therein and other lands formed by accretion or by reliction, where allowed by law, excepting tax adjudicated lands, and not presently under mineral lease on March 9, 2016, situated in Plaquemines Parish, Louisiana, and more particularly described as follows: Beginning at a point having Coordinates of X = 2,554,105.29 and Y = 241,887.48; thence Easterly approximately 6,500 feet to a point on the Western boundary of State Lease No. 3212; thence Southerly approximately 2,500 feet along the Western boundary of said State Lease No. 3212 to a point of intersection with the boundary of State Lease No. 192, as amended; thence along the meanders of said State Lease No. 192 the following: Southwesterly, Southerly and Southeasterly to a point of intersection with the Northern boundary of State Lease No. 3155; thence Westerly approximately 1,105 feet along the Northern boundary of said State Lease No. 3155 to its Northwest corner; thence Westerly approximately 5,620 feet to a point having Coordinates of X = 2,554,105.29 and Y = 234,273.00; thence North 7,614.48 feet to the point of beginning, **LESS AND EXCEPT** that portion, if any of State Lease No. 192, as amended, State Lease No. 2651, State Lease No. 2652, State Lease No. 3155 and State Lease No. 3212 that may lie within the above described tract, containing approximately **1,056 acres**, all as more particularly outlined on a plat on file in the Office of Mineral Resources, Department of Natural Resources. All bearings, distances and coordinates are based on Louisiana Coordinate System of 1927, (North or South Zone), where applicable.

NOTE: The above description of the Tract nominated for the purpose of acquiring a mineral lease or a geophysical agreement has been provided and corrected, where required, exclusively by the nominating party. Any mineral lease or geophysical agreement selected from this Tract and awarded by the Louisiana State Mineral and Energy Board shall be without warranty of any kind, either express, implied or statutory including, but not limited to, title or the implied warranties of merchantability and fitness for a particular purpose.

An error or omission in the nominating party's Tract description may require that a State mineral lease or geophysical agreement be modified, canceled or abrogated due to the existence of conflicting leases, operating agreements, private claims or other future obligations or conditions within the Tract described. In such case, however, the Louisiana State Mineral and Energy Board shall not be obligated to refund any consideration paid by the Lessee prior to such modification, cancellation or abrogation including, but not limited to, bonuses, rentals and royalties.

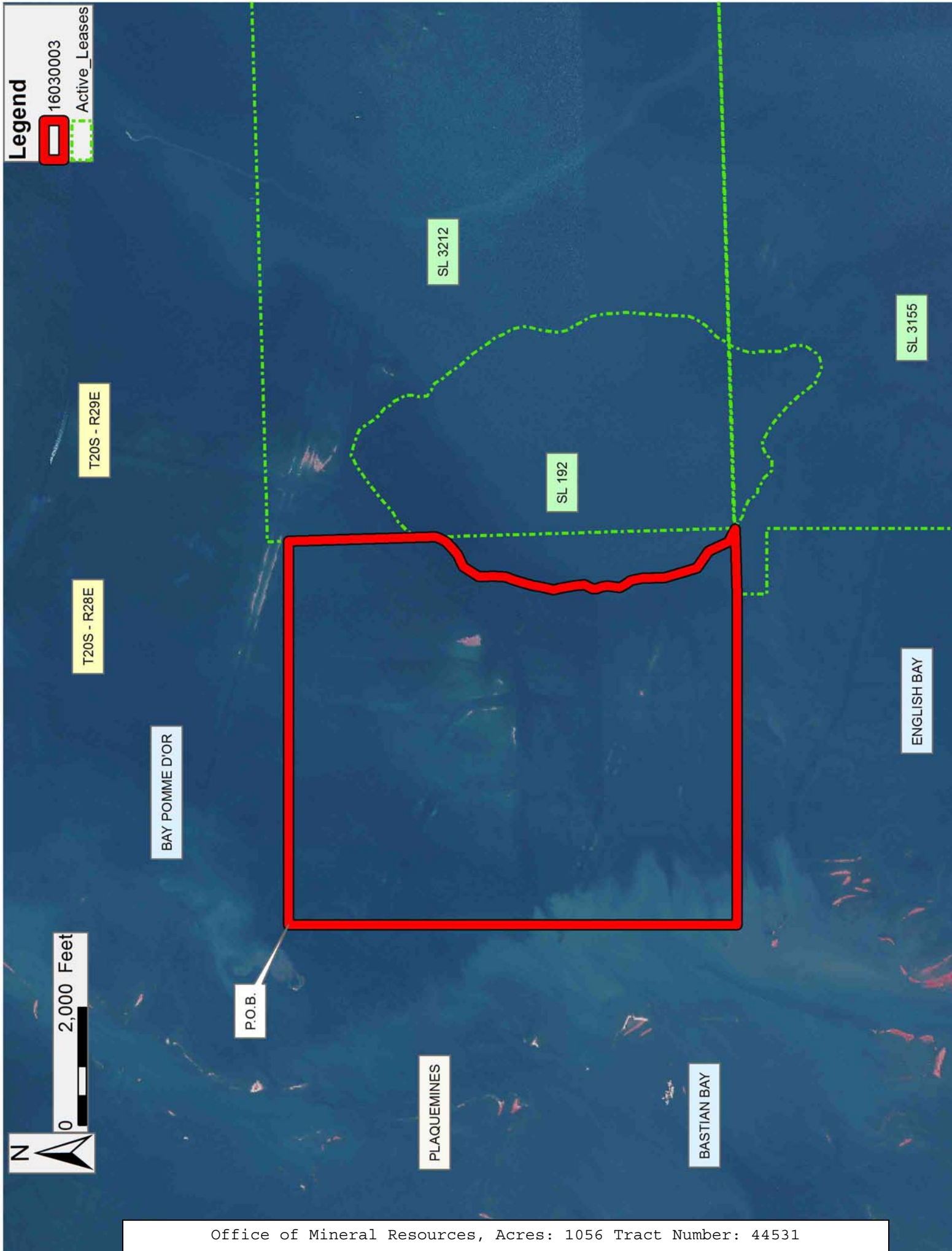
NOTE: The State of Louisiana does hereby reserve, and this lease shall be subject to, the imprescriptible right of surface use in the nature of a servitude in favor of the Department of Natural Resources, including its

Offices and Commissions, for the sole purpose of implementing, constructing, servicing and maintaining approved coastal zone management and/or restoration projects. Utilization of any and all rights derived under this lease by the mineral lessee, its agents, successors or assigns, shall not interfere with nor hinder the reasonable surface use by the Department of Natural Resources, its Offices or Commissions, as herein above reserved.

Applicant: ROBERT A. SCHROEDER, INC.

Bidder	Cash Payment	Price/ Acre	Rental	Oil	Gas	Other





**TRACT 44532 - Terrebonne Parish, Louisiana**

All of the lands now or formerly constituting the beds and bottoms of all water bodies of every nature and description as to which title is vested in the State of Louisiana, together with all islands arising therein and other lands formed by accretion or by reliction, where allowed by law, excepting tax adjudicated lands, and not presently under mineral lease on March 9, 2016, situated in Terrebonne Parish, Louisiana, and more particularly described as follows: Beginning at the Northwest corner of State Lease 724 having Coordinates of X = 2,163,894.52 and Y = 216,639.88; thence along the Northern boundary of said State Lease 724 the following courses: South 82 degrees 35 minutes 52 seconds East 4,044.82 feet to a point having coordinates of X = 2,167,905.63 and Y = 216,118.77, North 69 degrees 56 minutes 12 seconds East 267.65 feet to a point having coordinates of X = 2,168,157.04 and Y = 216,210.59, North 76 degrees 26 minutes 28 seconds East 346.48 feet to a point having coordinates of X = 2,168,493.86 and Y = 216,291.82, North 82 degrees 54 minutes 07 seconds East 203.69 feet to a point having coordinates of X = 2,168,695.99 and Y = 216,316.99, North 88 degrees 43 minutes 08 seconds East 250.49 feet to a point having coordinates of X = 2,168,946.42 and Y = 216,322.59, South 85 degrees 48 minutes 42 seconds East 358.33 feet to a point having coordinates of X = 2,169,303.79 and Y = 216,296.42, South 86 degrees 03 minutes 31 seconds East 432.80 feet to a point having coordinates of X = 2,169,735.57 and Y = 216,266.67, South 87 degrees 55 minutes 22 seconds East 443.60 feet to a point having coordinates of X = 2,170,178.88 and Y = 216,250.59, South 87 degrees 34 minutes 29 seconds East 363.70 feet to a point having coordinates of X = 2,170,542.25 and Y = 216,235.20, South 86 degrees 19 minutes 29 seconds East 211.23 feet to a point having coordinates of X = 2,170,753.05 and Y = 216,221.66, South 83 degrees 09 minutes 24 seconds East 219.72 feet to a point having coordinates of X = 2,170,971.20 and Y = 216,195.48, South 78 degrees 01 minutes 11 seconds East 209.51 feet to a point having coordinates of X = 2,171,176.15 and Y = 216,151.99, South 73 degrees 39 minutes 38 seconds East 103.08 feet to a point having coordinates of X = 2,171,275.07 and Y = 216,122.99, South 73 degrees 18 minutes 51 seconds West 822.86 feet to a point having coordinates of X = 2,170,486.86 and Y = 215,886.73, South 69 degrees 32 minutes 45 seconds West 219.24 feet to a point having coordinates of X = 2,170,281.44 and Y = 215,810.11, South 82 degrees 35 minutes 52 seconds East 2,471.10 feet to a point having coordinates of X = 2,172,731.95 and Y = 215,491.75, South 29 degrees 07 minutes 00 seconds East 1,505.82 feet to a point having coordinates of X = 2,173,464.67 and Y = 214,176.22, North 89 degrees 00 minutes 18 seconds East 1,001.34 feet to a point having coordinates of X = 2,174,465.86 and Y = 214,193.61, North 00 degrees 59 minutes 02 seconds West 5,966.50 feet to a point having coordinates of X = 2,174,363.42 and Y = 220,159.23, and North 89 degrees 43 minutes 25 seconds East 3,137.00 feet to a point having coordinates of X = 2,177,500.38 and Y = 220,174.36, thence South 00 degrees 00 minutes 00 seconds West 11,443.13 feet to a point having coordinates of X = 2,177,500.38 and Y = 208,731.23, thence West 13,472.56 feet to a point having coordinates of X = 2,164,027.82 and Y = 208,731.23, said point

being on the Western boundary of said State Lease 724; thence North 00 degrees 57 minutes 56 seconds West 7,909.77 feet along the said western boundary of said State Lease 724 to the point of beginning, **LESS AND EXCEPT** any portion thereof currently covered and affected by State Lease No. 724, as amended, and **LESS AND EXCEPT** any acreage in Sections 11 and 12, Township 21 South Range 16 East outlined in the Compromise Agreement between the State Mineral Board of the State of Louisiana and the Terrebonne Land Development Corporation, et. al. containing approximately **130 acres**, , all as more particularly outlined on a plat on file in the Office of Mineral Resources, Department of Natural Resources. All bearings, distances and coordinates are based on Louisiana Coordinate System of 1927, (North or South Zone), where applicable.

NOTE: The above description of the Tract nominated for the purpose of acquiring a mineral lease or a geophysical agreement has been provided and corrected, where required, exclusively by the nominating party. Any mineral lease or geophysical agreement selected from this Tract and awarded by the Louisiana State Mineral and Energy Board shall be without warranty of any kind, either express, implied or statutory including, but not limited to, title or the implied warranties of merchantability and fitness for a particular purpose.

An error or omission in the nominating party's Tract description may require that a State mineral lease or geophysical agreement be modified, canceled or abrogated due to the existence of conflicting leases, operating agreements, private claims or other future obligations or conditions within the Tract described. In such case, however, the Louisiana State Mineral and Energy Board shall not be obligated to refund any consideration paid by the Lessee prior to such modification, cancellation or abrogation including, but not limited to, bonuses, rentals and royalties.

NOTE: The State of Louisiana does hereby reserve, and this lease shall be subject to, the imprescriptible right of surface use in the nature of a servitude in favor of the Department of Natural Resources, including its Offices and Commissions, for the sole purpose of implementing, constructing, servicing and maintaining approved coastal zone management and/or restoration projects. Utilization of any and all rights derived under this lease by the mineral lessee, its agents, successors or assigns, shall not interfere with nor hinder the reasonable surface use by the Department of Natural Resources, its Offices or Commissions, as herein above reserved.



Applicant: ROBERT A. SCHROEDER, INC.

Bidder	Cash Payment	Price/ Acre	Rental	Oil	Gas	Other

