

TRACT 44258 - Catahoula and Concordia Parishes, Louisiana

All of the lands now or formerly constituting the beds and bottoms of all water bodies of every nature and description as to which title is vested in the State of Louisiana, together with all islands arising therein and other lands formed by accretion or by reliction, where allowed by law, excepting tax adjudicated lands, and not presently under mineral lease on March 11, 2015, situated in Catahoula and Concordia Parishes, Louisiana, and more particularly described as follows: Beginning at a point having Coordinates of X = 2,219,035.96 and Y = 303,597.52; thence South 5,750.00 feet to a point having Coordinates of X = 2,219,035.96 and Y = 297,847.52; thence West 3,500.00 feet to a point having Coordinates of X = 2,215,535.96 and Y = 297,847.52; thence North 5,750.00 feet to a point having Coordinates of X = 2,215,535.96 and Y = 303,597.52; thence East 3,500.00 feet to the Point of Beginning, containing approximately **65 acres**, all as more particularly outlined on a plat on file in the Office of Mineral Resources, Department of Natural Resources. All bearings, distances and coordinates are based on Louisiana Coordinate System of 1927, (North or South Zone), where applicable.

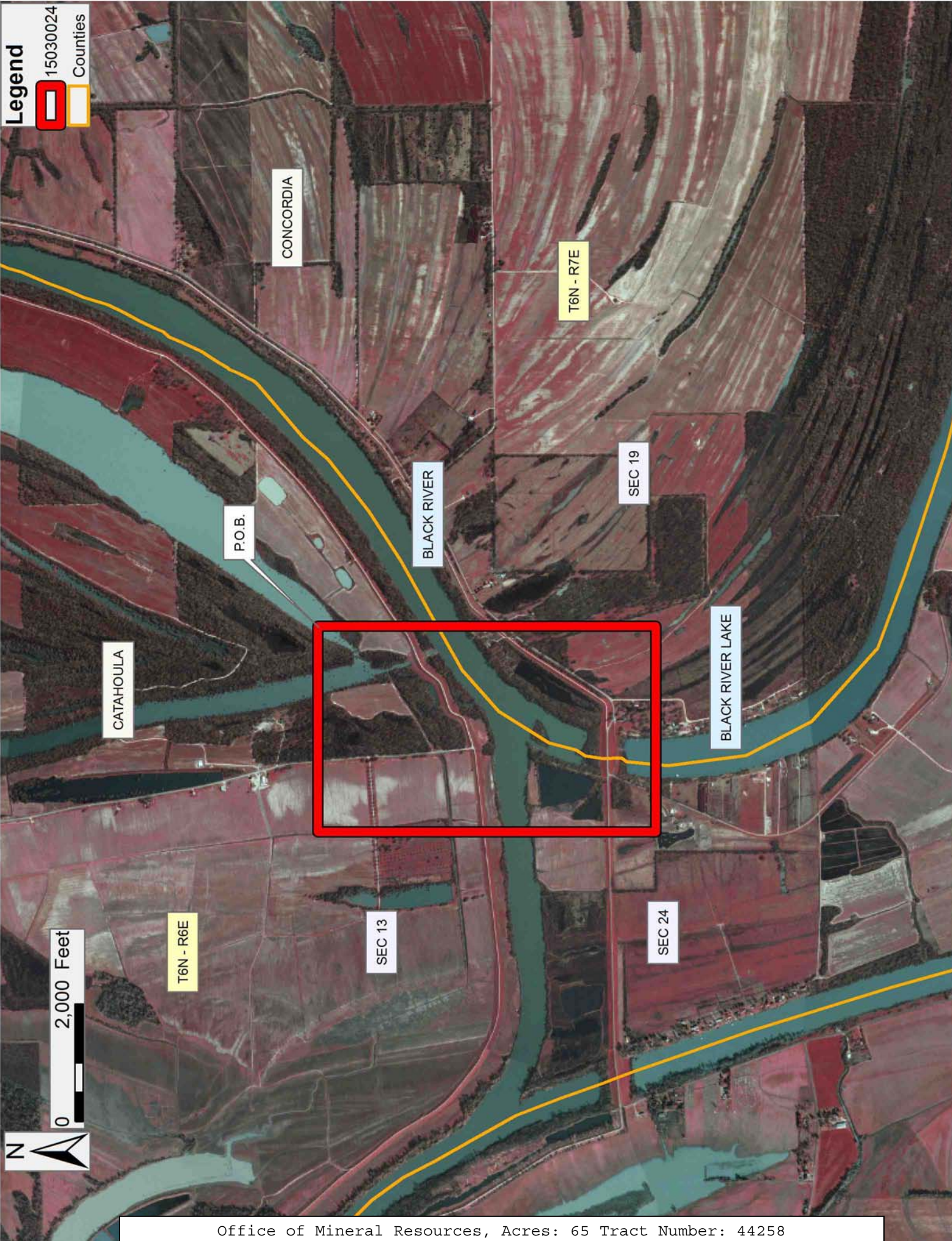
NOTE: The above description of the Tract nominated for the purpose of acquiring a mineral lease or a geophysical agreement has been provided and corrected, where required, exclusively by the nominating party. Any mineral lease or geophysical agreement selected from this Tract and awarded by the Louisiana State Mineral and Energy Board shall be without warranty of any kind, either express, implied or statutory including, but not limited to, title or the implied warranties of merchantability and fitness for a particular purpose.

An error or omission in the nominating party's Tract description may require that a State mineral lease or geophysical agreement be modified, canceled or abrogated due to the existence of conflicting leases, operating agreements, private claims or other future obligations or conditions within the Tract described. In such case, however, the Louisiana State Mineral and Energy Board shall not be obligated to refund any consideration paid by the Lessee prior to such modification, cancellation or abrogation including, but not limited to, bonuses, rentals and royalties.

Applicant: TWD ENERGY

Bidder	Cash Payment	Price/Acre	Rental	Oil	Gas	Other

Legend
15030024
Counties



TRACT 44259 - Catahoula and Concordia Parishes, Louisiana

All of the lands now or formerly constituting the beds and bottoms of all water bodies of every nature and description as to which title is vested in the State of Louisiana, together with all islands arising therein and other lands formed by accretion or by reliction, where allowed by law, excepting tax adjudicated lands, and not presently under mineral lease on March 11, 2015, situated in Catahoula and Concordia Parishes, Louisiana, and more particularly described as follows: Beginning at a point having Coordinates of X = 2,219,035.96 and Y = 297,847.52; thence South 3,500.00 feet to a point having Coordinates of X = 2,219,035.96 and Y = 294,347.52; thence West 1,163 feet to a point having Coordinates of X = 2,217,872.96 and Y = 294,347.52; thence South 2,250.00 feet to a point having Coordinates of X = 2,217,872.96 and Y = 292,097.52; thence West 2,337.00 feet to a point having Coordinates of X = 2,215,535.96 and Y = 292,097.52; thence North 5,750.00 feet to a point having Coordinates of X = 2,215,535.96 and Y = 297,847.52; thence East 3,500.00 feet to the Point of Beginning, containing approximately **67 acres**, all as more particularly outlined on a plat on file in the Office of Mineral Resources, Department of Natural Resources. All bearings, distances and coordinates are based on Louisiana Coordinate System of 1927, (North or South Zone), where applicable.

NOTE: The above description of the Tract nominated for the purpose of acquiring a mineral lease or a geophysical agreement has been provided and corrected, where required, exclusively by the nominating party. Any mineral lease or geophysical agreement selected from this Tract and awarded by the Louisiana State Mineral and Energy Board shall be without warranty of any kind, either express, implied or statutory including, but not limited to, title or the implied warranties of merchantability and fitness for a particular purpose.

An error or omission in the nominating party's Tract description may require that a State mineral lease or geophysical agreement be modified, canceled or abrogated due to the existence of conflicting leases, operating agreements, private claims or other future obligations or conditions within the Tract described. In such case, however, the Louisiana State Mineral and Energy Board shall not be obligated to refund any consideration paid by the Lessee prior to such modification, cancellation or abrogation including, but not limited to, bonuses, rentals and royalties.

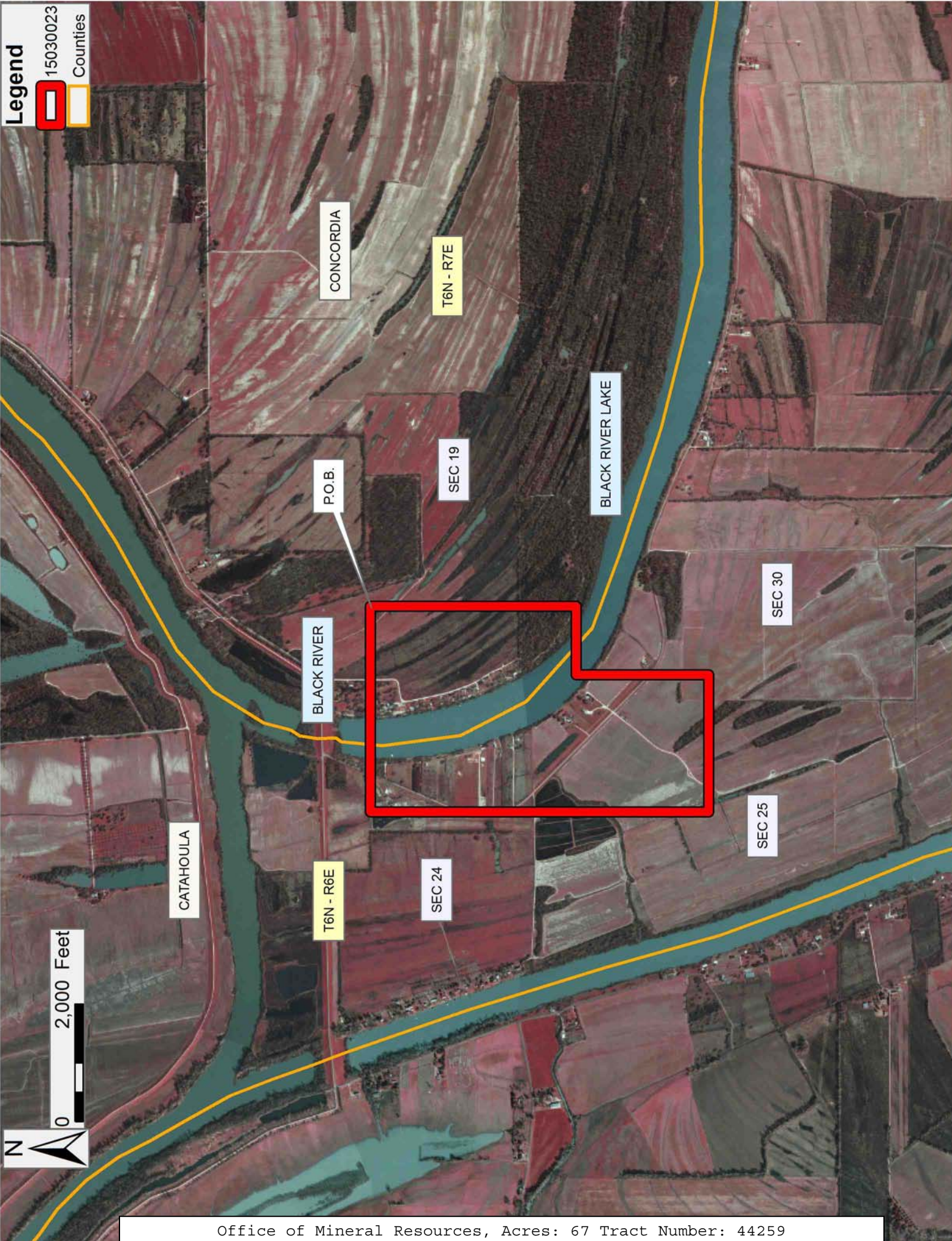
Applicant: TWD ENERGY

Bidder	Cash Payment	Price/Acre	Rental	Oil	Gas	Other

Legend

15030023

Counties



TRACT 44260 - Catahoula and Concordia Parishes, Louisiana

All of the lands now or formerly constituting the beds and bottoms of all water bodies of every nature and description as to which title is vested in the State of Louisiana, together with all islands arising therein and other lands formed by accretion or by reliction, where allowed by law, excepting tax adjudicated lands, and not presently under mineral lease on March 11, 2015, situated in Catahoula and Concordia Parishes, Louisiana, and more particularly described as follows: Beginning at a point having Coordinates of X = 2,223,622.96 and Y = 294,347.52; thence South 3,500.00 feet to a point having Coordinates of X = 2,223,622.96 and Y = 290,847.52; thence West 5,750.00 feet to a point having Coordinates of X = 2,217,872.96 and Y = 290,847.52; thence North 3,500.00 feet to a point having Coordinates of X = 2,217,872.96 and Y = 294,347.52; thence East 5,750.00 feet to the Point of Beginning, containing approximately **84 acres**, all as more particularly outlined on a plat on file in the Office of Mineral Resources, Department of Natural Resources. All bearings, distances and coordinates are based on Louisiana Coordinate System of 1927, (North or South Zone), where applicable.

NOTE: The above description of the Tract nominated for the purpose of acquiring a mineral lease or a geophysical agreement has been provided and corrected, where required, exclusively by the nominating party. Any mineral lease or geophysical agreement selected from this Tract and awarded by the Louisiana State Mineral and Energy Board shall be without warranty of any kind, either express, implied or statutory including, but not limited to, title or the implied warranties of merchantability and fitness for a particular purpose.

An error or omission in the nominating party's Tract description may require that a State mineral lease or geophysical agreement be modified, canceled or abrogated due to the existence of conflicting leases, operating agreements, private claims or other future obligations or conditions within the Tract described. In such case, however, the Louisiana State Mineral and Energy Board shall not be obligated to refund any consideration paid by the Lessee prior to such modification, cancellation or abrogation including, but not limited to, bonuses, rentals and royalties.

Bidder	Cash Payment	Price/Acre	Rental	Oil	Gas	Other

Applicant: TWD ENERGY

Legend
15030022
Counties



TRACT 44261 - Catahoula and Concordia Parishes, Louisiana

All of the lands now or formerly constituting the beds and bottoms of all water bodies of every nature and description as to which title is vested in the State of Louisiana, together with all islands arising therein and other lands formed by accretion or by reliction, where allowed by law, excepting tax adjudicated lands, and not presently under mineral lease on March 11, 2015, situated in Catahoula and Concordia Parishes, Louisiana, and more particularly described as follows: Beginning at a point having Coordinates of X = 2,227,972.96 and Y = 294,347.52; thence South 3,500.00 feet to a point having Coordinates of X = 2,227,972.96 and Y = 290,847.52; thence West 4,350.00 feet to a point having Coordinates of X = 2,223,622.96 and Y = 290,847.52; thence North 3,500.00 feet to a point having Coordinates of X = 2,223,622.96 and Y = 294,347.52; thence East 4,350.00 feet to the Point of Beginning, containing approximately **81 acres**, all as more particularly outlined on a plat on file in the Office of Mineral Resources, Department of Natural Resources. All bearings, distances and coordinates are based on Louisiana Coordinate System of 1927, (North or South Zone), where applicable.

NOTE: The above description of the Tract nominated for the purpose of acquiring a mineral lease or a geophysical agreement has been provided and corrected, where required, exclusively by the nominating party. Any mineral lease or geophysical agreement selected from this Tract and awarded by the Louisiana State Mineral and Energy Board shall be without warranty of any kind, either express, implied or statutory including, but not limited to, title or the implied warranties of merchantability and fitness for a particular purpose.

An error or omission in the nominating party's Tract description may require that a State mineral lease or geophysical agreement be modified, canceled or abrogated due to the existence of conflicting leases, operating agreements, private claims or other future obligations or conditions within the Tract described. In such case, however, the Louisiana State Mineral and Energy Board shall not be obligated to refund any consideration paid by the Lessee prior to such modification, cancellation or abrogation including, but not limited to, bonuses, rentals and royalties.

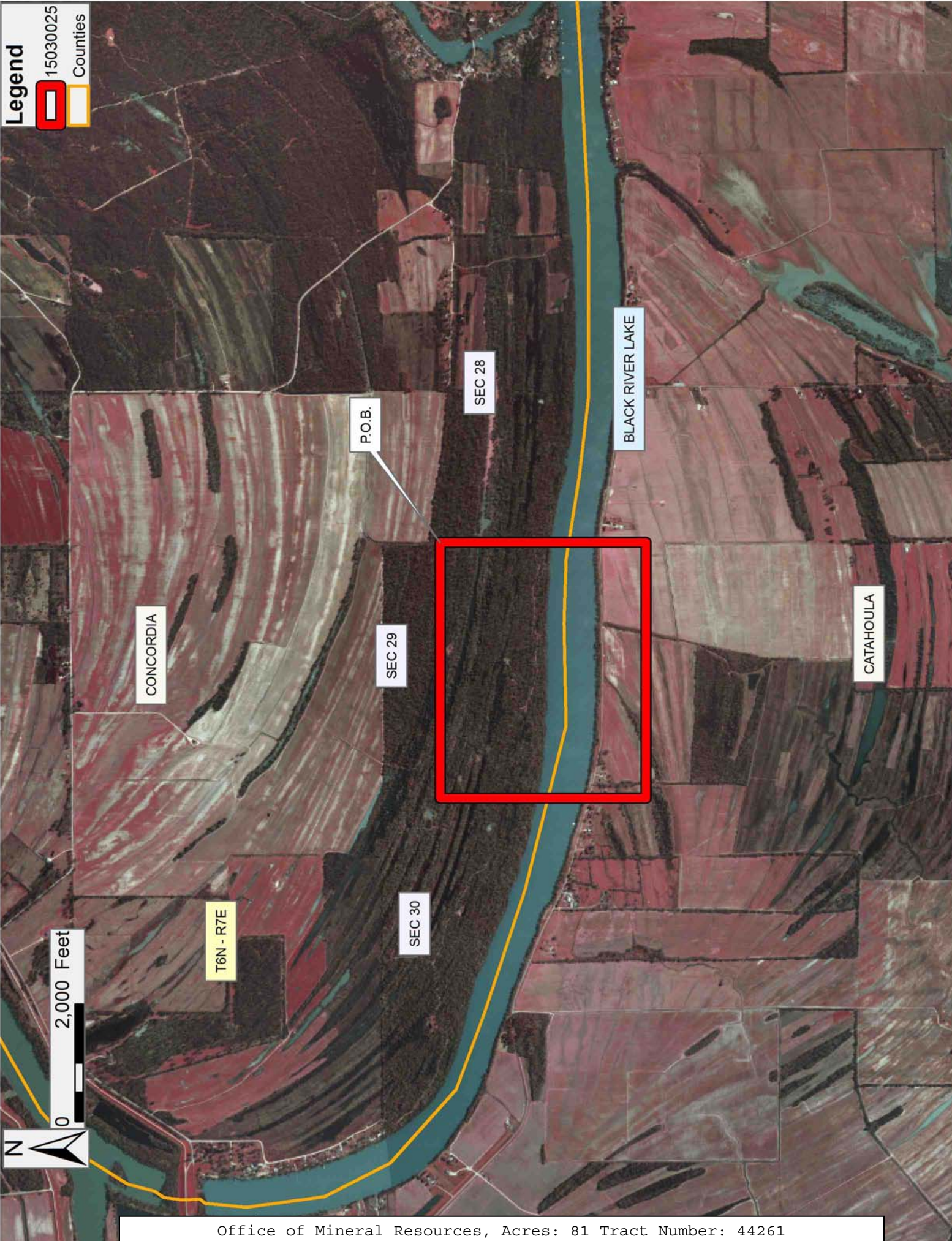
Bidder	Cash Payment	Price/Acre	Rental	Oil	Gas	Other

Applicant: TWD ENERGY

Legend

 15030025

 Counties



TRACT 44262 - East Baton Rouge and West Baton Rouge Parishes, Louisiana

All of the lands now or formerly constituting the beds and bottoms of all water bodies of every nature and description as to which title is vested in the State of Louisiana, together with all islands arising therein and other lands formed by accretion or by reliction, where allowed by law, excepting tax adjudicated lands, and not presently under mineral lease on March 11, 2015, situated in East Baton Rouge and West Baton Rouge Parishes, Louisiana, and more particularly described as follows: Beginning at a point having Coordinates of X = 2,022,441.55 and Y = 708,778.14; thence South approximately 11,067.44 feet to a point on the north boundary of State Lease No. 21107 having Coordinates of X = 2,022,441.55 and Y = 697,710.71; thence West approximately 3,454.12 feet along the north boundary of said State Lease No. 21107 to its Northwest corner, the Northeast corner of State Lease No. 18804, as amended and the Southeast corner of State Lease No. 21501, having Coordinates of X = 2,018,987.42 and Y = 697,710.68; thence along the boundaries of said State Lease No. 21501 the following courses: Northerly approximately 9,339 feet, Westerly approximately 7,535 feet, Southerly approximately 7,105 feet and Easterly approximately 1,518 feet to the Northwest corner of said State Lease No. 18804 Coordinates of X = 2,013,680.79 and Y = 697,710.68; thence South 08 degrees 06 minutes 54 seconds West 5,306.64 feet along the west boundary of said State Lease No. 18804 to its Southwest corner having Coordinates of X = 2,012,931.71 and Y = 692,457.17; thence South 09 degrees 06 minutes 29 seconds West 2,186.60 feet to a point having Coordinates of X = 2,012,585.58 and Y = 690,298.14; thence West 8,624.02 feet to a point having Coordinates of X = 2,003,961.55 and Y = 690,298.14; thence North 18,172.86 feet to a point having Coordinates of X = 2,003,961.55 and Y = 708,471.00; thence East 8,371.45 feet to a point having Coordinates of X = 2,012,333.00 and Y = 708,471.00 and North 307.14 feet to a point on its east boundary having Coordinates of X = 2,012,333.00 and Y = 708,778.14; thence East 10,108.55 feet to the point of beginning, (This tract includes only waterbottoms claimed and owned by the state and specifically excludes any land which the state may claim or own and to which the mineral rights are vested in the state), containing approximately **1423 acres**, all as more particularly outlined on a plat on file in the Office of Mineral Resources, Department of Natural Resources. All bearings, distances and coordinates are based on Louisiana Coordinate System of 1927, (North or South Zone), where applicable.

NOTE: The above description of the Tract nominated for the purpose of acquiring a mineral lease or a geophysical agreement has been provided and corrected, where required, exclusively by the nominating party. Any mineral lease or geophysical agreement selected from this Tract and awarded by the Louisiana State Mineral and Energy Board shall be without warranty of any kind, either express, implied or statutory including, but not limited to, title or the implied warranties of merchantability and fitness for a particular purpose.

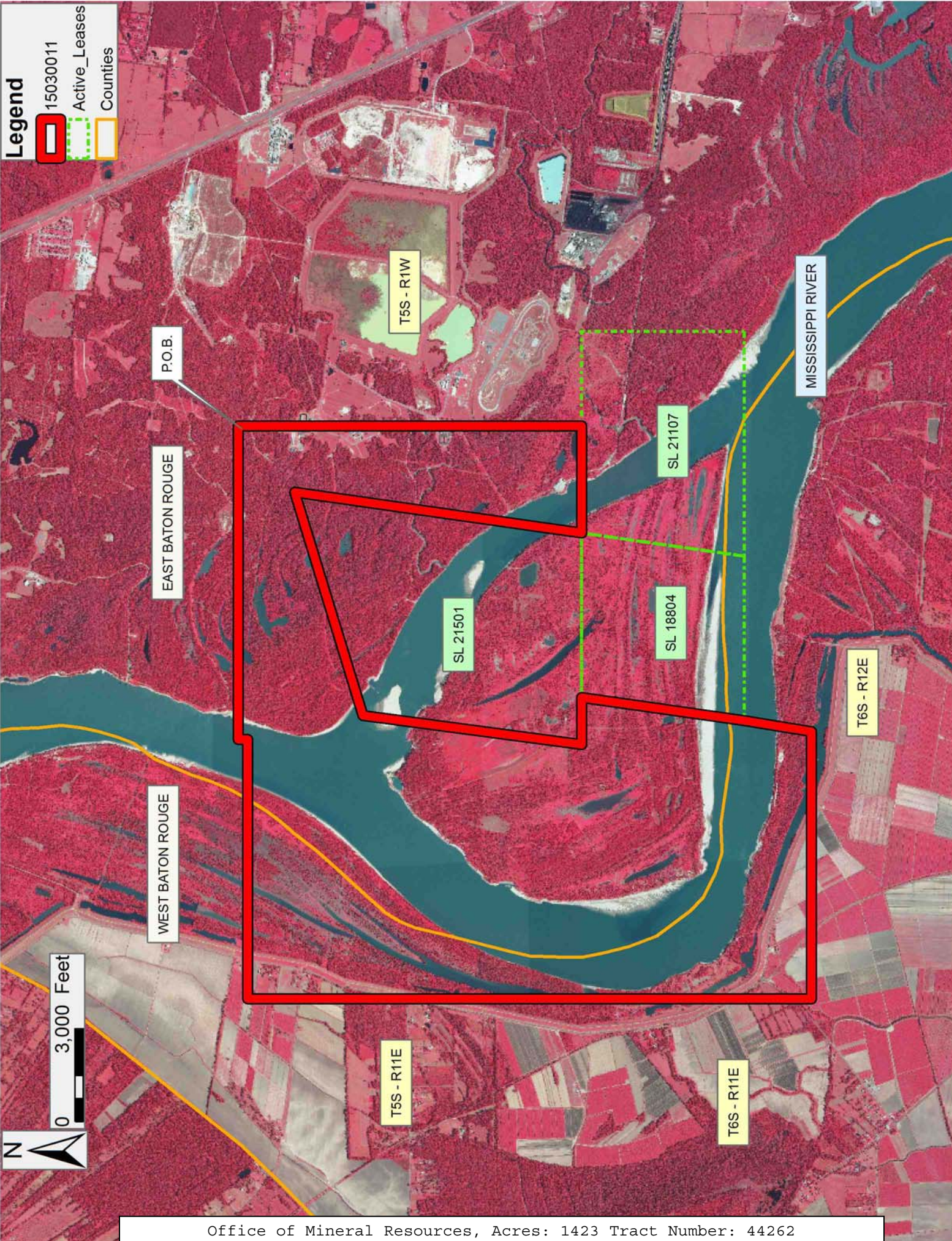
An error or omission in the nominating party's Tract description may require that a State mineral lease or geophysical agreement be modified, canceled or abrogated due to the existence of conflicting leases, operating agreements, private claims or other future obligations or conditions within the Tract described. In such case, however, the Louisiana State Mineral and Energy Board shall not be obligated to refund any consideration paid by the Lessee prior to such modification, cancellation or abrogation including, but not limited to, bonuses, rentals and royalties.

Applicant: ALJ ENERGY

Bidder	Cash Payment	Price/Acre	Rental	Oil	Gas	Other

Legend

- 15030011
- Active_Leases
- Counties



TRACT 44263 - Portion of Blocks 1, and 2, Breton Sound Area, Blocks 68, and 69, Chandeleur Sound Area, St. Bernard Parish, Louisiana

All of the lands now or formerly constituting the beds and bottoms of all water bodies of every nature and description as to which title is vested in the State of Louisiana, together with all islands arising therein and other lands formed by accretion or by reliction, where allowed by law, excepting tax adjudicated lands, and not presently under mineral lease on March 11, 2015, situated in St. Bernard Parish, Louisiana, and more particularly described as follows: Beginning at a point within Block 68, Chandeleur Sound Area, having Coordinates of X = 2,650,523.48 and Y = 381,833.00; thence South 503.00 feet to a point on the common block line between Block 68, Chandeleur Sound Area and Block 2, Breton Sound Area having Coordinates of X = 2,650,523.48 and Y = 381,330.00; thence South 6,674.00 feet to a point having Coordinates of X = 2,650,523.48; and Y = 374,656.00; thence West 423.48 feet to a point on the common block line between said Block 2, Breton Sound Area, and Block 1, Breton Sound Area, having Coordinates of X = 2,650,100.00 and Y = 374,656.00; thence West 14,750.00 feet to a point on the common block line between said Block 1, Breton Sound Area and Block 4, Main Pass Area, Revised, having Coordinates of X = 2,635,350.00; and Y = 374,656.00; thence North 6,674.00 feet to the Northwest corner of said Block 1, Breton Sound Area having Coordinates of X = 2,635,350.00 and Y = 381,330.00; thence continue North 503.02 feet along the common block line between said Block 70, Chandeleur Sound Area and Block 69, Chandeleur Sound Area, having Coordinates of X = 2,635,350.00 and Y = 381,833.00; thence East 1,476.00 feet to the South Southwest corner of State Lease No. 16799, having Coordinates of X = 2,636,826.00 and Y = 381,833.00; thence East 8,714.00 feet along the South Line of said State Lease No. 16799 to its Southeast corner, having Coordinates of X = 2,645,540.00 and Y = 381,833.00; thence East 4,560.00 feet to a point on the common block line between said Block 69, Chandeleur Sound Area and Block 68, Chandeleur Sound Area, having Coordinates of X = 2,650,100.00 and Y = 381,833.00; thence East 423.48 feet to the Point of Beginning, containing **2,500 acres**, all as more particularly outlined on a plat on file in the Office of Mineral Resources, Department of Natural Resources. All bearings, distances and coordinates are based on Louisiana Coordinate System of 1927, (North or South Zone), where applicable.

NOTE: The above description of the Tract nominated for the purpose of acquiring a mineral lease or a geophysical agreement has been provided and corrected, where required, exclusively by the nominating party. Any mineral lease or geophysical agreement selected from this Tract and awarded by the Louisiana State Mineral and Energy Board shall be without warranty of any kind, either express, implied or statutory including, but not limited to, title or the implied warranties of merchantability and fitness for a particular purpose.

An error or omission in the nominating party's Tract description may require that a State mineral lease or geophysical agreement be modified, canceled or abrogated due to the existence of conflicting leases, operating agreements, private claims or other future obligations or conditions within the Tract described. In such case, however, the Louisiana State Mineral and Energy Board shall not be obligated to refund any consideration paid by the Lessee prior to such modification, cancellation or abrogation including, but not limited to, bonuses, rentals and royalties.

NOTE: The State of Louisiana does hereby reserve, and this lease shall be subject to, the imprescriptible right of surface use in the nature of a servitude in favor of the Department of Natural Resources, including its Offices and Commissions, for the sole purpose of implementing, constructing, servicing and maintaining approved coastal zone management and/or restoration projects. Utilization of any and all rights derived under this lease by the mineral lessee, its agents, successors or assigns, shall not interfere with nor hinder the reasonable surface use by the Department of Natural Resources, its Offices or Commissions, as herein above reserved.

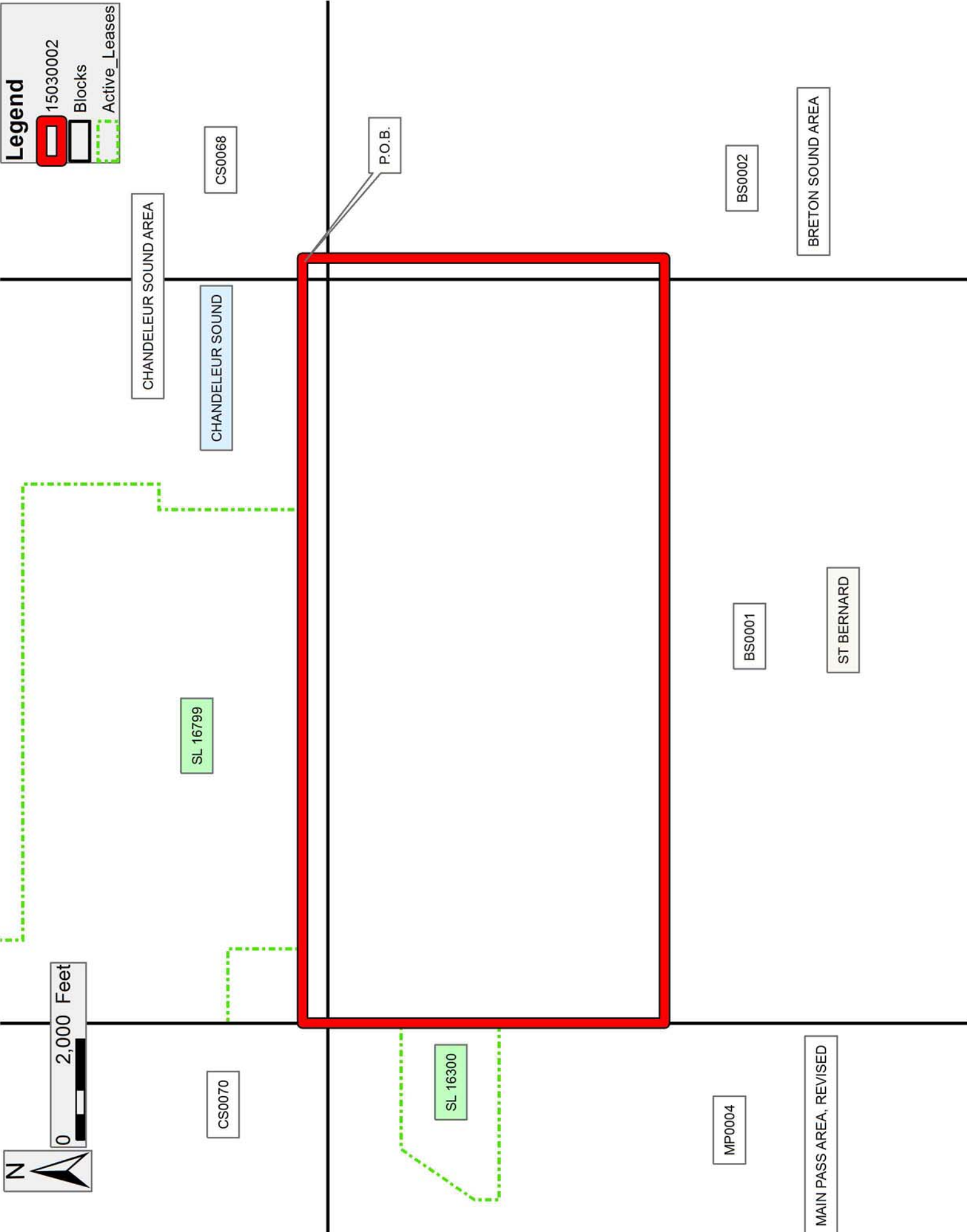
NOTE: This tract is located in an area designated by the Louisiana Legislature or the Wildlife and Fisheries Commission as a Public Oyster Seed Ground, Reservation, or area of Calcasieu or Sabine Lake. Proposed projects occurring in these areas will be evaluated on a case by case basis by Louisiana Department of Wildlife & Fisheries. Modifications to proposed project features including, but not limited to, access routes, well sites, flowlines, and appurtenant structures maybe required by the Louisiana Department of Wildlife and Fisheries. In addition, compensatory mitigation will be required to offset unavoidable habitat impacts.

Applicant: KELLY C BURTSSELL

Bidder	Cash Payment	Price/Acre	Rental	Oil	Gas	Other

Legend

- 15030002
- Blocks
- Active_Leases



TRACT 44264 - Portion of Block 1, Breton Sound Area, St. Bernard Parish, Louisiana

All of the lands now or formerly constituting the beds and bottoms of all water bodies of every nature and description as to which title is vested in the State of Louisiana, together with all islands arising therein and other lands formed by accretion or by reliction, where allowed by law, excepting tax adjudicated lands, and not presently under mineral lease on March 11, 2015, situated in St. Bernard Parish, Louisiana, and more particularly described as follows: Beginning at a point within Block 1, BretonSound Area, having Coordinates of X = 2,650,100.00 and Y = 374,656.00; thence South 8,076.00 along the common block line between Block 1 and Block 2 of Breton Sound Area, having Coordinates of X = 2,650,100.00 and Y = 366,580.00; said point being the Southeast corner of said Block 1, Breton Sound Area, thence West 13,484.39 feet to a point having Coordinates of X = 2,636,615.61 and Y = 366,580.00; thence North 8,076.00 feet to a point having Coordinates of X = 2,636,615.61 and Y = 374,656.00; thence East 13,484.39 feet to the Point of Beginning, **LESS AND EXCEPT** in its entirety State Lease No. 21484 as follows: Beginning at Coordinates of X = 2,650,100.00 and Y = 374,656.00; thence South 70 degrees 44 minutes 17 seconds West 8,688.83 feet to a point having Coordinates of X = 2,641,897.57 and Y = 371,789.65, being the point of beginning of said State Lease No. 21484; thence East 3,461.58 feet to a point having Coordinates of X = 2,645,359.15 and Y = 371,789.65; thence South 1,810.08 feet to a point having Coordinates of X = 2,645,359.15 and Y = 369,979.57; thence West 3,461.58 feet to a point having Coordinates of X = 2,641,897.57 and Y = 369,979.57; thence North 1,810.08 feet to the point of beginning, containing approximately 143.84 acres, said tract containing **2,356.16 acres**, all as more particularly outlined on a plat on file in the Office of Mineral Resources, Department of Natural Resources. All bearings, distances and coordinates are based on Louisiana Coordinate System of 1927, (North or South Zone), where applicable.

NOTE: The above description of the Tract nominated for the purpose of acquiring a mineral lease or a geophysical agreement has been provided and corrected, where required, exclusively by the nominating party. Any mineral lease or geophysical agreement selected from this Tract and awarded by the Louisiana State Mineral and Energy Board shall be without warranty of any kind, either express, implied or statutory including, but not limited to, title or the implied warranties of merchantability and fitness for a particular purpose.

An error or omission in the nominating party's Tract description may require that a State mineral lease or geophysical agreement be modified, canceled or abrogated due to the existence of conflicting leases, operating agreements, private claims or other future obligations or conditions within the Tract described. In such case, however, the Louisiana State Mineral and Energy Board shall not be obligated to refund

any consideration paid by the Lessee prior to such modification, cancellation or abrogation including, but not limited to, bonuses, rentals and royalties.


NOTE: The State of Louisiana does hereby reserve, and this lease shall be subject to, the imprescriptible right of surface use in the nature of a servitude in favor of the Department of Natural Resources, including its Offices and Commissions, for the sole purpose of implementing, constructing, servicing and maintaining approved coastal zone management and/or restoration projects. Utilization of any and all rights derived under this lease by the mineral lessee, its agents, successors or assigns, shall not interfere with nor hinder the reasonable surface use by the Department of Natural Resources, its Offices or Commissions, as herein above reserved.

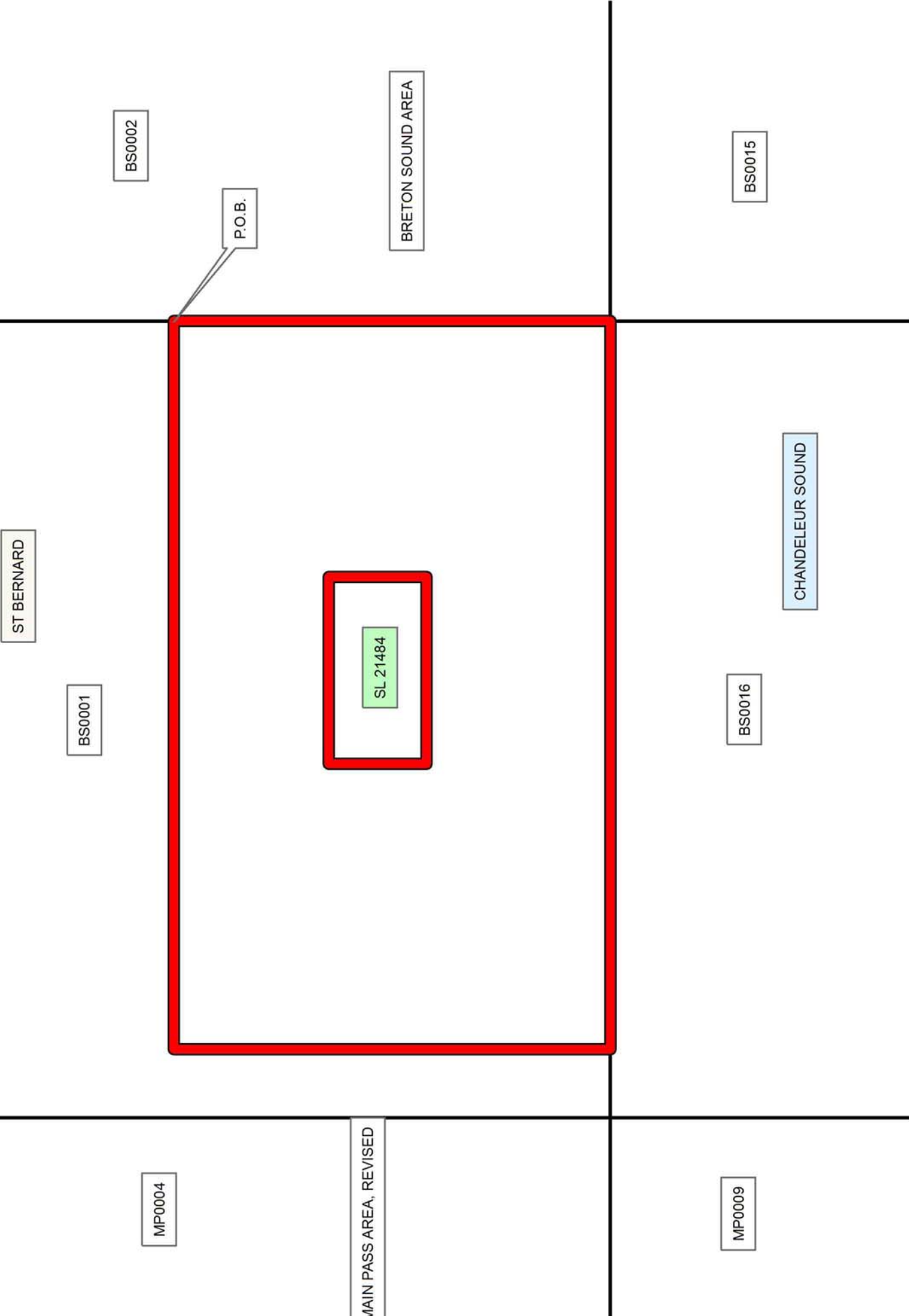
NOTE: This tract is located in an area designated by the Louisiana Legislature or the Wildlife and Fisheries Commission as a Public Oyster Seed Ground, Reservation, or area of Calcasieu or Sabine Lake. Proposed projects occurring in these areas will be evaluated on a case by case basis by Louisiana Department of Wildlife & Fisheries. Modifications to proposed project features including, but not limited to, access routes, well sites, flowlines, and appurtenant structures maybe required by the Louisiana Department of Wildlife and Fisheries. In addition, compensatory mitigation will be required to offset unavoidable habitat impacts.

Applicant: KELLY C BURTSSELL

Bidder	Cash Payment	Price/Acre	Rental	Oil	Gas	Other

Legend
 15030003
 Blocks


0 2,000 Feet



TRACT 44265 - Portion of Block 22, Main Pass Area, Revised, Plaquemines Parish, Louisiana

All of the lands now or formerly constituting the beds and bottoms of all water bodies of every nature and description as to which title is vested in the State of Louisiana, together with all islands arising therein and other lands formed by accretion or by reliction, where allowed by law, excepting tax adjudicated lands, and not presently under mineral lease on March 11, 2015, situated in Plaquemines Parish, Louisiana, and more particularly described as follows: Beginning at a point having Coordinates of X = 2,605,850.00 and Y = 322,330.00, said point being the southwest corner of Block 22, Main Pass Area, Revised; Thence North 7,375.00 feet on and along the west line of said Block 22, Main Pass Area, Revised, to a point having Coordinates of X = 2,605,850.00 and Y = 329,705.00; Thence East 14,750.00 feet to a point having Coordinates of X = 2,620,600.00 and Y = 329,705.00, said point being on the east line of said Block 22, Main Pass Area, Revised; Thence South 7,375.00 feet on and along said East line of said Block 22, Main Pass Area, Revised, to a point having Coordinates of X = 2,620,600.00 and Y = 322,330.00, said point being the southeast corner of said Block 22, Main Pass Area, Revised; Thence West 14,750.00 feet on and along the south line of said Block 22, Main Pass Area, Revised, to the Point of Beginning, containing approximately **2,497.27 acres**, all as more particularly outlined on a plat on file in the Office of Mineral Resources, Department of Natural Resources. All bearings, distances and coordinates are based on Louisiana Coordinate System of 1927, (North or South Zone), where applicable.

NOTE: The above description of the Tract nominated for the purpose of acquiring a mineral lease or a geophysical agreement has been provided and corrected, where required, exclusively by the nominating party. Any mineral lease or geophysical agreement selected from this Tract and awarded by the Louisiana State Mineral and Energy Board shall be without warranty of any kind, either express, implied or statutory including, but not limited to, title or the implied warranties of merchantability and fitness for a particular purpose.

An error or omission in the nominating party's Tract description may require that a State mineral lease or geophysical agreement be modified, canceled or abrogated due to the existence of conflicting leases, operating agreements, private claims or other future obligations or conditions within the Tract described. In such case, however, the Louisiana State Mineral and Energy Board shall not be obligated to refund any consideration paid by the Lessee prior to such modification, cancellation or abrogation including, but not limited to, bonuses, rentals and royalties.

NOTE: The State of Louisiana does hereby reserve, and this lease shall be subject to, the imprescriptible right of surface use in the nature of a servitude in favor of the Department of Natural Resources, including its Offices and Commissions, for the sole purpose of implementing,




constructing, servicing and maintaining approved coastal zone management and/or restoration projects. Utilization of any and all rights derived under this lease by the mineral lessee, its agents, successors or assigns, shall not interfere with nor hinder the reasonable surface use by the Department of Natural Resources, its Offices or Commissions, as herein above reserved.

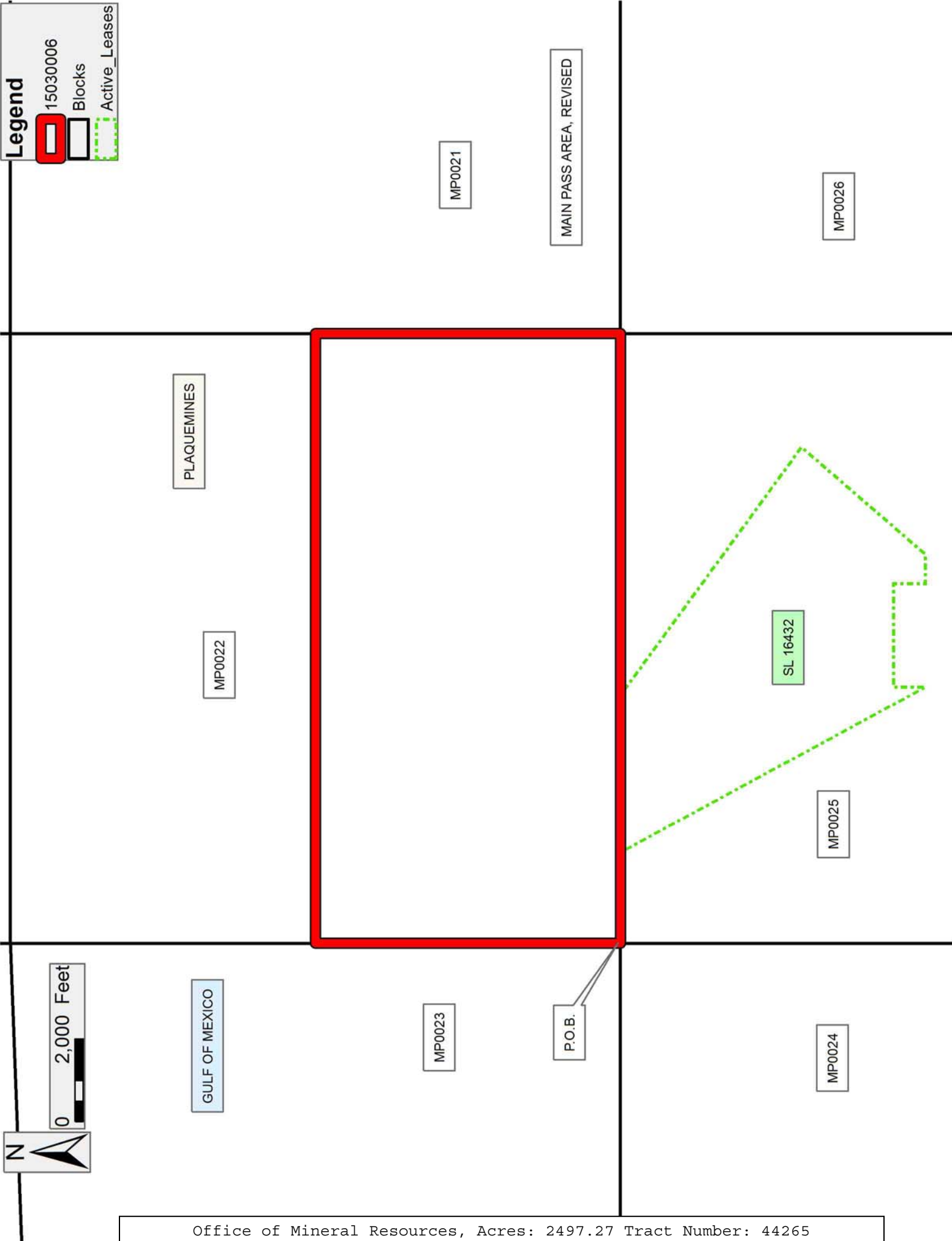
NOTE: This tract is located in an area designated by the Louisiana Legislature or the Wildlife and Fisheries Commission as a Public Oyster Seed Ground, Reservation, or area of Calcasieu or Sabine Lake. Proposed projects occurring in these areas will be evaluated on a case by case basis by Louisiana Department of Wildlife & Fisheries. Modifications to proposed project features including, but not limited to, access routes, well sites, flowlines, and appurtenant structures maybe required by the Louisiana Department of Wildlife and Fisheries. In addition, compensatory mitigation will be required to offset unavoidable habitat impacts.

Applicant: ROBERT A. SCHROEDER, INC.

Bidder	Cash Payment	Price/Acre	Rental	Oil	Gas	Other

Legend

-  15030006
-  Blocks
-  Active_Leases



TRACT 44266 - Portion of Block 25, Main Pass Area, Revised, Plaquemines Parish, Louisiana

All of the lands now or formerly constituting the beds and bottoms of all water bodies of every nature and description as to which title is vested in the State of Louisiana, together with all islands arising therein and other lands formed by accretion or by reliction, where allowed by law, excepting tax adjudicated lands, and not presently under mineral lease on March 11, 2015, situated in Plaquemines Parish, Louisiana, and more particularly described as follows: Beginning at a point having Coordinates of X = 2,620,600.00 and Y = 307,580.00; said point being the southeast corner of said Block 25, Main Pass Area, Revised; Thence West 7,375.00 feet on and along the south line of said Block 25, Main Pass Area, Revised, to a point having Coordinates of X = 2,613,225.00 and Y = 307,580.00, Thence North 8,150.00 feet to a point having Coordinates of X = 2,613,225.00 and Y = 315,730.00, said point also being on the southern boundary of State of Louisiana State Lease No. 16432; Thence on and along said southern and eastern boundaries of said State of Louisiana State Lease No. 16432 the following courses and distances, to wit: East 1,324.99 feet to a point having Coordinates of X = 2,614,549.99 and Y = 315,730.00; South 775.00 feet to a point having Coordinates of X = 2,614,549.99 and Y = 314,955.00; East 700.00 feet to a point having Coordinates of X = 2,615,249.99 and Y = 314,955.00; North 40 degrees 54 minutes 52 seconds East 3,969.89 feet to a point having Coordinates of X = 2,617,850.00 and Y = 317,955.00; and North 53 degrees 54 minutes 06 seconds West 7,425.67 feet to a point having Coordinates of X = 2,611,850.00 and Y = 322,330.00, said point being the northeast corner of said State of Louisiana State Lease No. 16432; Thence East 8,750.00 feet on and along the north line of said Block 25, Main Pass Area, Revised, to a point having Coordinates of X = 2,620,600.00 and Y = 322,330.00, said point being the northeast corner of said Block 25, Main Pass Area, Revised; Thence South 14,750.00 feet on and along the east line of said Block 25, Main Pass Area, Revised, to the Point of Beginning, containing approximately **2,128.65 acres**, all as more particularly outlined on a plat on file in the Office of Mineral Resources, Department of Natural Resources. All bearings, distances and coordinates are based on Louisiana Coordinate System of 1927, (North or South Zone), where applicable.

NOTE: The above description of the Tract nominated for the purpose of acquiring a mineral lease or a geophysical agreement has been provided and corrected, where required, exclusively by the nominating party. Any mineral lease or geophysical agreement selected from this Tract and awarded by the Louisiana State Mineral and Energy Board shall be without warranty of any kind, either express, implied or statutory including, but not limited to, title or the implied warranties of merchantability and fitness for a particular purpose.

An error or omission in the nominating party's Tract description may require that a State mineral lease or geophysical agreement be modified, canceled or abrogated due to the existence of conflicting leases,

operating agreements, private claims or other future obligations or conditions within the Tract described. In such case, however, the Louisiana State Mineral and Energy Board shall not be obligated to refund any consideration paid by the Lessee prior to such modification, cancellation or abrogation including, but not limited to, bonuses, rentals and royalties.




NOTE: The State of Louisiana does hereby reserve, and this lease shall be subject to, the imprescriptible right of surface use in the nature of a servitude in favor of the Department of Natural Resources, including its Offices and Commissions, for the sole purpose of implementing, constructing, servicing and maintaining approved coastal zone management and/or restoration projects. Utilization of any and all rights derived under this lease by the mineral lessee, its agents, successors or assigns, shall not interfere with nor hinder the reasonable surface use by the Department of Natural Resources, its Offices or Commissions, as herein above reserved.

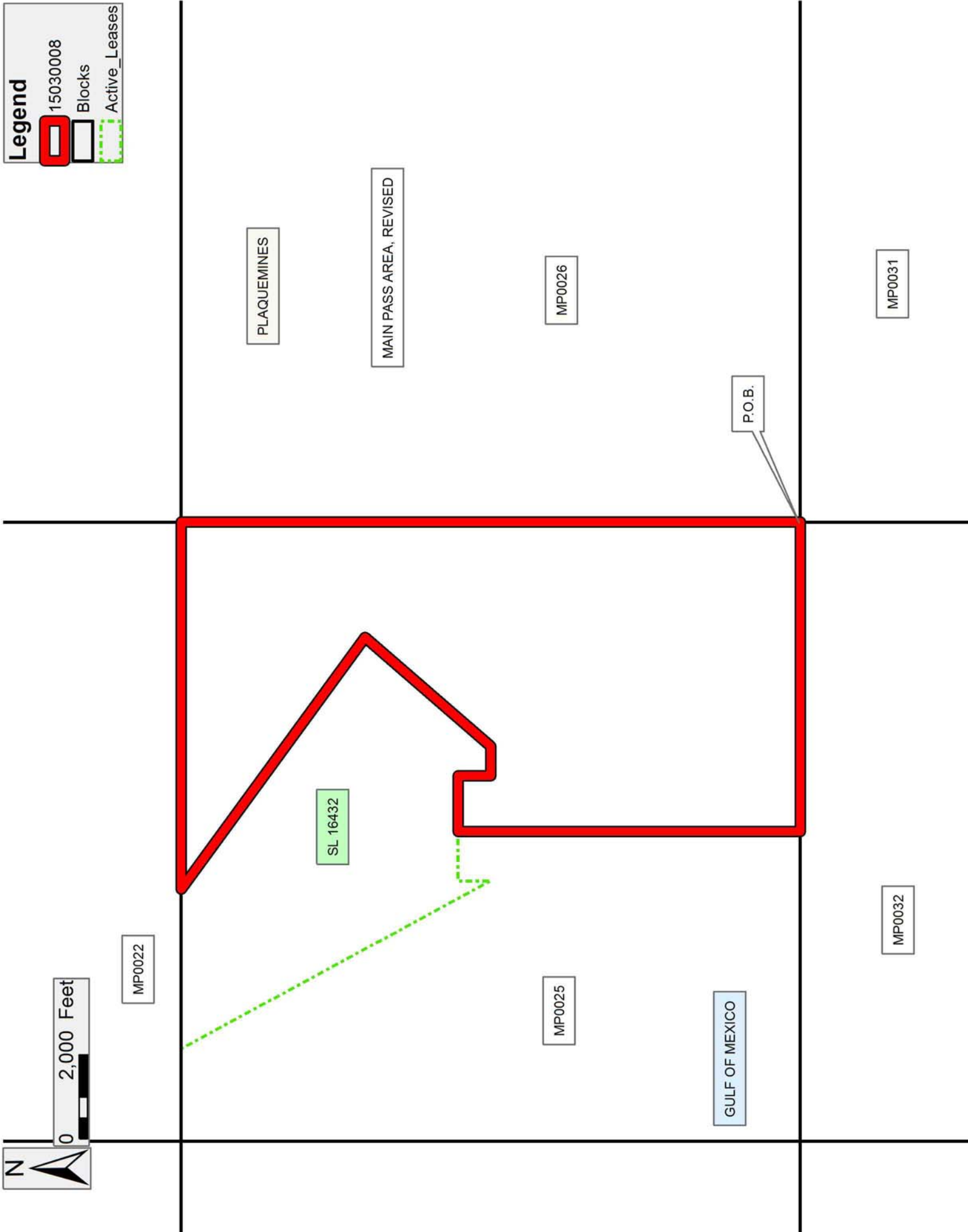
NOTE: This tract is located in an area designated by the Louisiana Legislature or the Wildlife and Fisheries Commission as a Public Oyster Seed Ground, Reservation, or area of Calcasieu or Sabine Lake. Proposed projects occurring in these areas will be evaluated on a case by case basis by Louisiana Department of Wildlife & Fisheries. Modifications to proposed project features including, but not limited to, access routes, well sites, flowlines, and appurtenant structures maybe required by the Louisiana Department of Wildlife and Fisheries. In addition, compensatory mitigation will be required to offset unavoidable habitat impacts.

Applicant: ROBERT A.SCHROEDER, INC.

Bidder	Cash Payment	Price/Acre	Rental	Oil	Gas	Other

Legend

-  15030008
-  Blocks
-  Active_Leases



TRACT 44267 - Portion of Block 25, Main Pass Area, Revised, Plaquemines Parish, Louisiana

All of the lands now or formerly constituting the beds and bottoms of all water bodies of every nature and description as to which title is vested in the State of Louisiana, together with all islands arising therein and other lands formed by accretion or by reliction, where allowed by law, excepting tax adjudicated lands, and not presently under mineral lease on March 11, 2015, situated in Plaquemines Parish, Louisiana, and more particularly described as follows: Beginning at a point having Coordinates of X = 2,605,850.00 and Y = 322,330.00; said point being the northwest corner of said Block 25, Main Pass Area, Revised; Thence East 2,200.00 feet on and along the north line of said Block 25, Main Pass Area, Revised, to a point having Coordinates of X = 2,608,050.00 and Y = 322,330.00, said point being the northwest corner of State of Louisiana State Lease No. 16432; Thence on and along said western and southern boundaries of said State of Louisiana State Lease No. 16432 the following courses and distances, to wit: South 28 degrees 28 minutes 27 seconds East 8,389.91 feet to a point having Coordinates of X = 2,612,049.99 and Y = 314,955.00; North 775.00 feet to a point having Coordinates of X = 2,612,049.99 and Y = 315,730.00; and East 1,175.01 feet to a point having Coordinates of X = 2,613,225.00 and Y = 315,730.00; Thence South 8,150.00 feet to a point having Coordinates of X = 2,613,225.00 and Y = 307,580.00, said point being on the south line of said Block 25, Main Pass Area, Revised; Thence West 7,375.00 feet on and along said south line of said Block 25, Main Pass Area, Revised, to a point having Coordinates of X = 2,605,850.00 and Y = 307,580.00, said point being the southwest corner of Block 25, Main Pass Area, Revised; Thence North 14,750.00 feet on and along the west line of said Block 25, Main Pass Area, Revised, to the Point of Beginning, **LESS AND EXCEPT** those portions thereof within the boundaries of State of Louisiana State Lease Nos. 16692 and 16819 more particularly described as follows, to wit: Beginning at a point having Coordinates of X = 2,608,208.49 and Y = 315,086.85; Thence East 750.00 feet to a point having Coordinates of X = 2,608,958.49 and Y = 315,086.85; Thence South 28 degrees 28 minutes 25 seconds East 150.00 feet to a point having Coordinates of X = 2,609,030.00 and Y = 314,955.00; Thence East 420.00 feet to a point having Coordinates of X = 2,609,450.00 and Y = 314,955.00; Thence East 1,580.00 feet to a point having Coordinates of X = 2,611,030.00 and Y = 314,955.00; Thence South 3,864.62 feet to a point having Coordinates of X = 2,611,030.00 and Y = 311,090.38; Thence North 77 degrees 00 minutes 19 seconds West 1,621.53 feet to a point having Coordinates of X = 2,609,450.00 and Y = 311,455.00; Thence North 300.00 feet to a point having Coordinates of X = 2,609,450.00 and Y = 311,755.00; Thence North 59 degrees 39 minutes 01 seconds West 1,438.67 feet to a point having Coordinates of X = 2,608,208.49 and Y = 312,481.92; Thence North 2,604.93 feet to the Point of Beginning; containing approximately **1,577.61 acres**, all as more particularly outlined on a plat on file in the Office of Mineral Resources, Department of Natural Resources. All bearings, distances and coordinates are based on Louisiana Coordinate System of 1927, (North or South Zone), where applicable.

NOTE: The above description of the Tract nominated for the purpose of acquiring a mineral lease or a geophysical agreement has been provided and corrected, where required, exclusively by the nominating party. Any mineral lease or geophysical agreement selected from this Tract and awarded by the Louisiana State Mineral and Energy Board shall be without warranty of any kind, either express, implied or statutory including, but not limited to, title or the implied warranties of merchantability and fitness for a particular purpose.

An error or omission in the nominating party's Tract description may require that a State mineral lease or geophysical agreement be modified, canceled or abrogated due to the existence of conflicting leases, operating agreements, private claims or other future obligations or conditions within the Tract described. In such case, however, the Louisiana State Mineral and Energy Board shall not be obligated to refund any consideration paid by the Lessee prior to such modification, cancellation or abrogation including, but not limited to, bonuses, rentals and royalties.




NOTE: The State of Louisiana does hereby reserve, and this lease shall be subject to, the imprescriptible right of surface use in the nature of a servitude in favor of the Department of Natural Resources, including its Offices and Commissions, for the sole purpose of implementing, constructing, servicing and maintaining approved coastal zone management and/or restoration projects. Utilization of any and all rights derived under this lease by the mineral lessee, its agents, successors or assigns, shall not interfere with nor hinder the reasonable surface use by the Department of Natural Resources, its Offices or Commissions, as herein above reserved.

NOTE: This tract is located in an area designated by the Louisiana Legislature or the Wildlife and Fisheries Commission as a Public Oyster Seed Ground, Reservation, or area of Calcasieu or Sabine Lake. Proposed projects occurring in these areas will be evaluated on a case by case basis by Louisiana Department of Wildlife & Fisheries. Modifications to proposed project features including, but not limited to, access routes, well sites, flowlines, and appurtenant structures maybe required by the Louisiana Department of Wildlife and Fisheries. In addition, compensatory mitigation will be required to offset unavoidable habitat impacts.

Applicant: ROBERT A. SCHROEDER, INC.

Bidder	Cash Payment	Price/Acre	Rental	Oil	Gas	Other

Legend

-  15030007
-  Blocks
-  Active_Leases

