

TRACT 41935 - Terrebonne Parish, Louisiana

All of the lands now or formerly constituting the beds and bottoms of all water bodies of every nature and description as to which title is vested in the State of Louisiana, together with all islands arising therein and other lands formed by accretion or by reliction, where allowed by law, excepting tax adjudicated lands, and not presently under mineral lease on March 9, 2011, situated in Terrebonne Parish, Louisiana, and more particularly described as follows: Beginning at a point having Coordinates of X = 2,051,937.75 and Y = 253,541.09; thence North 89 degrees 29 minutes 15 seconds East a distance of 13,357.20 feet to a point having Coordinates of X = 2,065,294.41 and Y = 253,660.58; thence South 00 degrees 31 minutes 33 seconds West a distance of 5,692.05 feet to a point on the North line of S. L. 19290 having Coordinates of X = 2,065,242.17 and Y = 247,968.77; thence West along the North line of S. L. 19290 a distance of 7,509.49 feet to a point having Coordinates of X = 2,057,732.68 and Y = 247,968.77; thence South a distance of 4,756.14 feet to a point having Coordinates of X = 2,057,732.68 and Y = 243,212.63; thence West a distance of 5,794.93 feet to a point having Coordinates of X = 2,051,937.75 and Y = 243,212.63; thence North a distance of 10,328.46 feet to the Point of Beginning containing approximately **1245 acres**, all as more particularly outlined on a plat on file in the Office of Mineral Resources, Department of Natural Resources. All bearings, distances and coordinates are based on Louisiana Coordinate System of 1927, (North or South Zone), where applicable.

NOTE: The above description of the Tract nominated for lease has been provided and corrected, where required, exclusively by the nomination party. Any mineral lease selected from this Tract and awarded by the Louisiana State Mineral and Energy Board shall be without warranty of any kind, either express, implied, or statutory, including, but not limited to, the implied warranties of merchantability and fitness for a particular purpose. Should the mineral lease awarded by the Louisiana State Mineral and Energy Board be subsequently modified, cancelled or abrogated due to the existence of conflicting leases, operating agreements, private claims or other future obligations or conditions which may affect all or any portion of the leased Tract, it shall not relieve the Lessee of the obligation to pay any bonus due thereon to the Louisiana State Mineral and Energy Board, nor shall the Louisiana State Mineral and Energy Board be obligated to refund any consideration paid by the Lessor prior to such modification, cancellation, or abrogation, including, but not limited to, bonuses, rentals and royalties.

NOTE: The State of Louisiana does hereby reserve, and this lease shall be subject to, the imprescriptible right of surface use in the nature of a servitude in favor of the Department of Natural Resources, including its Offices and Commissions, for the sole purpose of implementing, constructing, servicing and maintaining approved coastal zone management and/or restoration projects. Utilization of any and all rights derived under this lease by the mineral lessee, its agents, successors or assigns, shall not interfere with nor hinder the reasonable surface use by the

Department of Natural Resources, its Offices or Commissions, as herein above reserved.

Applicant: CRESCENT RESOURCES, LLC

Bidder	Cash Payment	Price/ Acre	Rental	Oil	Gas	Other



TRACT 41936 - Terrebonne Parish, Louisiana

All of the lands now or formerly constituting the beds and bottoms of all water bodies of every nature and description as to which title is vested in the State of Louisiana, together with all islands arising therein and other lands formed by accretion or by reliction, where allowed by law, excepting tax adjudicated lands, and not presently under mineral lease on March 9, 2011, situated in Terrebonne Parish, Louisiana, and more particularly described as follows: Beginning at a point having Coordinates of X = 2,057,732.68 and Y = 247,968.77; thence East a distance of 1,863.18 feet to a point having Coordinates of X = 2,059,595.86 and Y = 247,968.77; thence, South along the west line of S. L. 19290 a distance of 1,443.58 feet to a point having Coordinates of X = 2,059,595.86 and Y = 246,525.19; thence East along the south line of S. L. 19290 a distance of 6,385.93 feet to a point on the west line of S. L. 19978 having Coordinates of X = 2,065,981.79 and Y = 246,525.19; thence South a distance of 3,310.18 feet to a point on the north line of S. L. 19979 having Coordinates of X = 2,065,981.79 and Y = 243,215.01; thence South 89 degrees 02 minutes 52 seconds West along the north line of S. L. 19979 a distance of 143.35 feet to a point having Coordinates of X = 2,065,838.46 and Y = 243,212.63; thence South along the west line of S. L. 19979 a distance of 2,545.82 feet to the north line of S. L. 19979 having Coordinates of X = 2,065,838.46 and Y = 240,666.81; thence West along the north line of S. L. 19979 a distance of 902.73 feet to a point having Coordinates of X = 2,064,935.73 and Y = 240,666.81; thence South along the west line of S. L. 19979 a distance of 1,437.46 feet to a point having Coordinates of X = 2,064,935.73 and Y = 239,229.35; thence North 89 degrees 46 minutes 55 seconds East along the south line of S. L. 19979 a distance of 2,271.31 feet to a point having Coordinates of X = 2,067,207.02 and Y = 239,237.99; thence South a distance of 1,617.20 feet to a point having Coordinates of X = 2,067,207.02 and Y = 237,620.79; thence West a distance of 9,474.34 feet to a point having Coordinates of X = 2,057,732.68 and Y = 237,620.79; thence North a distance of 10,347.98 feet to the Point of Beginning, **LESS & EXCEPT** that portion, if any, of State Lease No. 18677, as amended which may lie within the above described tract, containing approximately **1421 acres**, all as more particularly outlined on a plat on file in the Office of Mineral Resources, Department of Natural Resources. All bearings, distances and coordinates are based on Louisiana Coordinate System of 1927, (North or South Zone), where applicable.

NOTE: The above description of the Tract nominated for lease has been provided and corrected, where required, exclusively by the nomination party. Any mineral lease selected from this Tract and awarded by the Louisiana State Mineral and Energy Board shall be without warranty of any kind, either express, implied, or statutory, including, but not limited to, the implied warranties of merchantability and fitness for a particular purpose. Should the mineral lease awarded by the Louisiana State Mineral and Energy Board be subsequently modified, cancelled or abrogated due to the existence of conflicting leases, operating agreements, private claims or other future obligations or conditions which may affect all or any

portion of the leased Tract, it shall not relieve the Lessee of the obligation to pay any bonus due thereon to the Louisiana State Mineral and Energy Board, nor shall the Louisiana State Mineral and Energy Board be obligated to refund any consideration paid by the Lessor prior to such modification, cancellation, or abrogation, including, but not limited to, bonuses, rentals and royalties.

NOTE: The State of Louisiana does hereby reserve, and this lease shall be subject to, the imprescriptible right of surface use in the nature of a servitude in favor of the Department of Natural Resources, including its Offices and Commissions, for the sole purpose of implementing, constructing, servicing and maintaining approved coastal zone management and/or restoration projects. Utilization of any and all rights derived under this lease by the mineral lessee, its agents, successors or assigns, shall not interfere with nor hinder the reasonable surface use by the Department of Natural Resources, its Offices or Commissions, as herein above reserved.

Applicant: CRESCENT RESOURCES, LLC

Bidder	Cash Payment	Price/ Acre	Rental	Oil	Gas	Other

Legend

11030164

Active Leases

IMAGERY.DOQQ_2008_1M_CIR



TRACT 41937 - Plaquemines Parish, Louisiana

All of the lands now or formerly constituting the beds and bottoms of all water bodies of every nature and description as to which title is vested in the State of Louisiana, together with all islands arising therein and other lands formed by accretion or by reliction, where allowed by law, excepting tax adjudicated lands, and not presently under mineral lease on March 9, 2011, situated in Plaquemines Parish, Louisiana, and more particularly described as follows: Beginning at a point on the West boundary of State Lease No. 15918, as amended, having Coordinates of X = 2,623,847.90 and Y = 196,594.73; thence along the boundary of said State Lease No. 15918 the following courses: South 01 degrees 42 minutes 53 seconds East 1,990.76 feet to a point having Coordinates of X = 2,623,907.47 and Y = 194,604.86 and North 88 degrees 16 minutes 08 seconds East 2,004.04 feet to a point having Coordinates of X = 2,625,910.60 and Y = 194,665.40; thence South 01 degrees 36 minutes 03 seconds East 3,276.33 feet to a point having Coordinates of X = 2,626,002.13 and Y = 191,390.35; thence Westerly approximately 2,655 feet to a Northeast corner of State Lease No. 2203, as amended; thence along the boundary of said State Lease No. 2203 the following: Westerly approximately 2,640 feet; Northerly approximately 2,267 feet and Westerly approximately 5,248 feet to a point on its North boundary; thence Northerly approximately 319 feet to the Southeast corner of Operating Agreement AO 0021; thence Northerly approximately 2,648 feet along the East boundary of said Operating Agreement AO 0021 to a point; thence Easterly approximately 8,550 feet to the point of beginning, containing approximately **914 acres**, all as more particularly outlined on a plat on file in the Office of Mineral Resources, Department of Natural Resources. All bearings, distances and coordinates are based on Louisiana Coordinate System of 1927, (North or South Zone), where applicable.

NOTE: The above description of the Tract nominated for lease has been provided and corrected, where required, exclusively by the nomination party. Any mineral lease selected from this Tract and awarded by the Louisiana State Mineral and Energy Board shall be without warranty of any kind, either express, implied, or statutory, including, but not limited to, the implied warranties of merchantability and fitness for a particular purpose. Should the mineral lease awarded by the Louisiana State Mineral and Energy Board be subsequently modified, cancelled or abrogated due to the existence of conflicting leases, operating agreements, private claims or other future obligations or conditions which may affect all or any portion of the leased Tract, it shall not relieve the Lessee of the obligation to pay any bonus due thereon to the Louisiana State Mineral and Energy Board, nor shall the Louisiana State Mineral and Energy Board be obligated to refund any consideration paid by the Lessor prior to such modification, cancellation, or abrogation, including, but not limited to, bonuses, rentals and royalties.

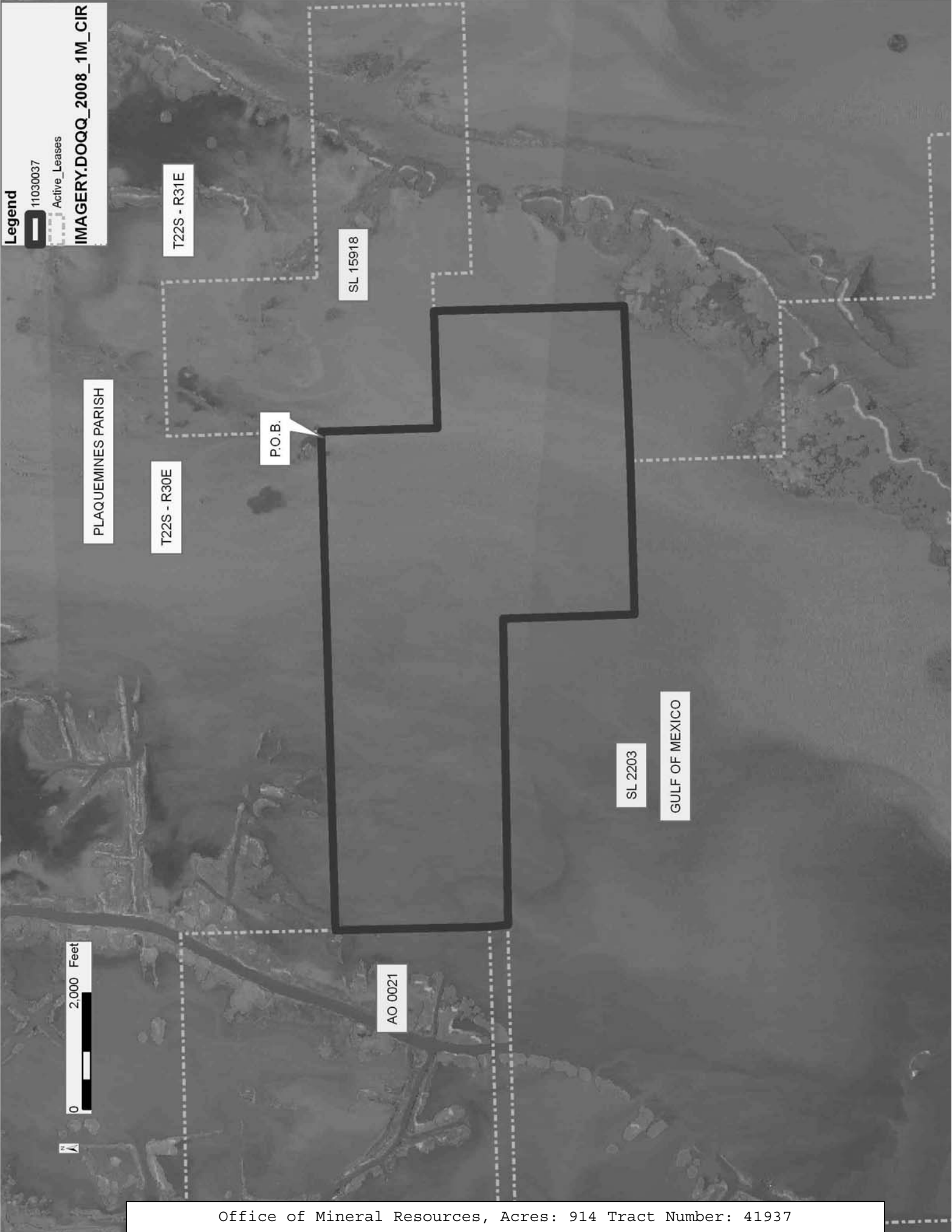
NOTE: The State of Louisiana does hereby reserve, and this lease shall be subject to, the imprescriptible right of surface use in the nature of a

servitude in favor of the Department of Natural Resources, including its Offices and Commissions, for the sole purpose of implementing, constructing, servicing and maintaining approved coastal zone management and/or restoration projects. Utilization of any and all rights derived under this lease by the mineral lessee, its agents, successors or assigns, shall not interfere with nor hinder the reasonable surface use by the Department of Natural Resources, its Offices or Commissions, as herein above reserved.

Applicant: MARK A O'NEAL & ASSOCIATES, INC.

Bidder	Cash Payment	Price/ Acre	Rental	Oil	Gas	Other

Legend
11030037
Active_Leases
IMAGERY.DOQQ_2008_1M_CIR



TRACT 41938 - Portion of Blocks 53, and 54, West Delta Area, Plaquemines Parish, Louisiana

All of the lands now or formerly constituting the beds and bottoms of all water bodies of every nature and description as to which title is vested in the State of Louisiana, together with all islands arising therein and other lands formed by accretion or by reliction, where allowed by law, excepting tax adjudicated lands, and not presently under mineral lease on March 9, 2011, situated in Plaquemines Parish, Louisiana, and more particularly described as follows: Beginning at a point on the North line of Block 54 having Coordinates of X = 2,623,655.83 and Y = 144,676.30; thence East 2,722.10 feet along the North line of said Block 54 to a point on its Northeast corner also the Northwest corner of Block 53 having Coordinates of X = 2,626,377.93 and Y = 144,676.30; thence East 12,770.80 feet to a point having Coordinates of X = 2,639,148.81 and Y = 144,676.30; thence Southerly to a point of intersection with State Lease No. 978 having Coordinates of X = 2,638,674.35 and Y = 140,950.00; thence along the boundary of said State Lease No. 978 the following courses: West 1,174.35 feet and South 23 degrees 16 minutes 44 seconds West 1,513.19 feet to a point that intersects with State Lease No. 17935 having Coordinates of X = 2,636,901.98 and Y = 139,560.00; thence along the boundary of said State Lease No. 17935 the following courses: West 3,166.98 feet, South 2,910.00 feet and East 1,559.91 feet to a point that intersects with said Louisiana Coastline having Coordinates of X = 2,635,294.91 and Y = 136,650.00; thence Southerly along said Louisiana Coastline to a point of intersection with AO 303; thence along the boundary of said AO 303 the following courses: North 62 degrees 36 minutes 6 seconds West 1,179.71 feet and South 26 degrees 32 minutes 33 seconds West 3,080.20 feet to a point of intersection with AO 160 having Coordinates of X = 2,632,021.90 and Y = 130,966.71; thence along the boundary of said AO 160 the following courses: North 58 degrees 13 minutes 20 seconds West 1,962.09 feet and West 276.00 feet to a point of intersection with State Lease No. 978 having Coordinates of X = 2,630,077.93 and Y = 132,000.00; thence along the boundary of said State Lease No. 978 the following courses: North 6,776.30 feet and West 3,700.00 feet to a point of intersection with State Lease No. 979 and the West line of Block 53 also the East line of Block 54 having Coordinates of X = 2,626,377.93 and Y = 138,776.30; thence along the boundary of said State Lease No. 979 the following courses: North 1,400.00 feet and North 55 degrees 6 minutes 12 seconds West 3,318.89 feet to a point on its Northeast boundary having Coordinates of X = 2,623,655.83 and Y = 142,075.03; thence North 2,601.27 feet to the point of beginning, containing approximately **2,473 acres**, all as more particularly outlined on a plat on file in the Office of Mineral Resources, Department of Natural Resources. All bearings, distances and coordinates are based on Louisiana Coordinate System of 1927, (North or South Zone), where applicable.

NOTE: The above description of the Tract nominated for lease has been provided and corrected, where required, exclusively by the nomination party. Any mineral lease selected from this Tract and awarded by the

Louisiana State Mineral and Energy Board shall be without warranty of any kind, either express, implied, or statutory, including, but not limited to, the implied warranties of merchantability and fitness for a particular purpose. Should the mineral lease awarded by the Louisiana State Mineral and Energy Board be subsequently modified, cancelled or abrogated due to the existence of conflicting leases, operating agreements, private claims or other future obligations or conditions which may affect all or any portion of the leased Tract, it shall not relieve the Lessee of the obligation to pay any bonus due thereon to the Louisiana State Mineral and Energy Board, nor shall the Louisiana State Mineral and Energy Board be obligated to refund any consideration paid by the Lessor prior to such modification, cancellation, or abrogation, including, but not limited to, bonuses, rentals and royalties.

NOTE: The State of Louisiana does hereby reserve, and this lease shall be subject to, the imprescriptible right of surface use in the nature of a servitude in favor of the Department of Natural Resources, including its Offices and Commissions, for the sole purpose of implementing, constructing, servicing and maintaining approved coastal zone management and/or restoration projects. Utilization of any and all rights derived under this lease by the mineral lessee, its agents, successors or assigns, shall not interfere with nor hinder the reasonable surface use by the Department of Natural Resources, its Offices or Commissions, as herein above reserved.

Applicant: REAGAN ENERGY SERVICES, LLC

Bidder	Cash Payment	Price/ Acre	Rental	Oil	Gas	Other

Legend

11030069

Active_Leases



PLAQUEMINES PARISH

WD0052

GULF OF MEXICO

P.O.B.

SL 978

SL 17935

AO 0303

SL 978

WD0053

AO 0160

SL 979

WEST DELTA AREA

WD0054

SOUTH PASS AREA

TRACT 41939 - Portion of Blocks 82, and 83, West Delta Area, Plaquemines Parish, Louisiana

All of the lands now or formerly constituting the beds and bottoms of all water bodies of every nature and description as to which title is vested in the State of Louisiana, together with all islands arising therein and other lands formed by accretion or by reliction, where allowed by law, excepting tax adjudicated lands, and not presently under mineral lease on March 9, 2011, situated in Plaquemines Parish, Louisiana, and more particularly described as follows: Beginning at a point having Coordinates of X = 2,615,465.50 and Y = 123,834.20; thence East 3,787.49 feet on the North line of said Block 83 to a point having Coordinates of X = 2,619,256.83 and Y = 123,834.20; thence South 48 degrees 44 minutes 4 seconds East 3,684.34 feet to a point having Coordinates of X = 2,622,026.21 and Y = 121,404.19; thence North 43 degrees 05 minutes 57 seconds East to a point having a Coordinates of X = 2,624,300.10 and Y = 123,834.20; thence East approximately 669 feet on the North line of said Block 83 to the Northwest corner of State Lease No. 2593, as amended having a Coordinate of X = 2,624,969.40 and Y = 123,834.20; thence South and Southeast along the West boundary of said State Lease No. 2593 to its intersection with State Lease No. 2227, as amended; thence Southwesterly along the Western boundary of said State Lease No. 2227 and State Lease No. 2565 to a point of intersection with the West line of said Block 83; thence Northerly approximately 8,415 feet on the West line of said Block 83 to the point of beginning, containing approximately **834 acres**, all as more particularly outlined on a plat on file in the Office of Mineral Resources, Department of Natural Resources. All bearings, distances and coordinates are based on Louisiana Coordinate System of 1927, (North or South Zone), where applicable.

NOTE: The above description of the Tract nominated for lease has been provided and corrected, where required, exclusively by the nomination party. Any mineral lease selected from this Tract and awarded by the Louisiana State Mineral and Energy Board shall be without warranty of any kind, either express, implied, or statutory, including, but not limited to, the implied warranties of merchantability and fitness for a particular purpose. Should the mineral lease awarded by the Louisiana State Mineral and Energy Board be subsequently modified, cancelled or abrogated due to the existence of conflicting leases, operating agreements, private claims or other future obligations or conditions which may affect all or any portion of the leased Tract, it shall not relieve the Lessee of the obligation to pay any bonus due thereon to the Louisiana State Mineral and Energy Board, nor shall the Louisiana State Mineral and Energy Board be obligated to refund any consideration paid by the Lessor prior to such modification, cancellation, or abrogation, including, but not limited to, bonuses, rentals and royalties.

NOTE: The State of Louisiana does hereby reserve, and this lease shall be subject to, the imprescriptible right of surface use in the nature of a servitude in favor of the Department of Natural Resources, including its

Offices and Commissions, for the sole purpose of implementing, constructing, servicing and maintaining approved coastal zone management and/or restoration projects. Utilization of any and all rights derived under this lease by the mineral lessee, its agents, successors or assigns, shall not interfere with nor hinder the reasonable surface use by the Department of Natural Resources, its Offices or Commissions, as herein above reserved.

Applicant: REAGAN ENERGY SERVICES, LLC

Bidder	Cash Payment	Price/ Acre	Rental	Oil	Gas	Other

Legend

11030070

Blocks

Active_Leases

IMAGERY.DOQQ_2008_1M_CIR

AO 0161

PLAQUEMINES PARISH

SL 17379

WD0054

GULF OF MEXICO

SL 2593

SL 17380

SL 2227

SL 2565

WD0083

P.O.B.

WD0082

