

**TRACT 41925 - Vermilion Parish, Louisiana**

All of the lands now or formerly constituting the beds and bottoms of all water bodies of every nature and description as to which title is vested in the State of Louisiana, together with all islands arising therein and other lands formed by accretion or by reliction, where allowed by law, excepting tax adjudicated lands, and not presently under mineral lease on March 9, 2011, situated in Vermilion Parish, Louisiana, and more particularly described as follows: Beginning at a point having Coordinates of X = 1,758,225.00 and Y = 388,212.00; thence East 15,840.00 feet to a point having Coordinates of X = 1,774,065.00 and Y = 388,212.00; thence South 6,875.00 feet to a point having Coordinates of X = 1,774,065.00 and Y = 381,337.00; thence West 15,840.00 feet to a point having Coordinates of X = 1,758,225.00 and Y = 381,337.00; thence North 6,875.00 feet to the point of beginning, containing approximately **2,500 acres**, all as more particularly outlined on a plat on file in the Office of Mineral Resources, Department of Natural Resources. All bearings, distances and coordinates are based on Louisiana Coordinate System of 1927, (North or South Zone), where applicable.

NOTE: The above description of the Tract nominated for lease has been provided and corrected, where required, exclusively by the nomination party. Any mineral lease selected from this Tract and awarded by the Louisiana State Mineral and Energy Board shall be without warranty of any kind, either express, implied, or statutory, including, but not limited to, the implied warranties of merchantability and fitness for a particular purpose. Should the mineral lease awarded by the Louisiana State Mineral and Energy Board be subsequently modified, cancelled or abrogated due to the existence of conflicting leases, operating agreements, private claims or other future obligations or conditions which may affect all or any portion of the leased Tract, it shall not relieve the Lessee of the obligation to pay any bonus due thereon to the Louisiana State Mineral and Energy Board, nor shall the Louisiana State Mineral and Energy Board be obligated to refund any consideration paid by the Lessor prior to such modification, cancellation, or abrogation, including, but not limited to, bonuses, rentals and royalties.

NOTE: The State of Louisiana does hereby reserve, and this lease shall be subject to, the imprescriptible right of surface use in the nature of a servitude in favor of the Department of Natural Resources, including its Offices and Commissions, for the sole purpose of implementing, constructing, servicing and maintaining approved coastal zone management and/or restoration projects. Utilization of any and all rights derived under this lease by the mineral lessee, its agents, successors or assigns, shall not interfere with nor hinder the reasonable surface use by the Department of Natural Resources, its Offices or Commissions, as herein above reserved.

NOTE: This tract is located in an area designated by the Louisiana Legislature or the Wildlife and Fisheries Commission as a Public Oyster Seed Ground, Reservation, or area of Calcasieu or Sabine Lake. Proposed

projects occurring in these areas will be evaluated on a case by case basis by Louisiana Department of Wildlife & Fisheries. Modifications to proposed project features including, but not limited to, access routes, well sites, flowlines, and appurtenant structures maybe required by the Louisiana Department of Wildlife and Fisheries. In addition, compensatory mitigation will be required to offset unavoidable habitat impacts.

Applicant: OIL LAND SERVICES, INC.

Bidder	Cash Payment	Price/ Acre	Rental	Oil	Gas	Other

VERMILION PARISH

VERMILION BAY



P.O.B.



**TRACT 41926 - Portion of Block 8, Breton Sound Area, St. Bernard Parish, Louisiana**

All of the lands now or formerly constituting the beds and bottoms of all water bodies of every nature and description as to which title is vested in the State of Louisiana, together with all islands arising therein and other lands formed by accretion or by reliction, where allowed by law, excepting tax adjudicated lands, and not presently under mineral lease on March 9, 2011, situated in St. Bernard Parish, Louisiana, and more particularly described as follows: Beginning at a point on having Coordinates of X = 2,738,599.99 and Y = 373,954.99; thence East 14,750.01 feet to a point having Coordinates of X = 2,753,350.00 and Y = 373,954.99; thence South 7,374.99 feet to a point having Coordinates of X = 2,753,350.00 and Y = 366,580.00; thence West 14,750.01 feet to a point having Coordinates of X = 2,738,599.99 and Y = 366,579.99; thence North 7,375.00 feet to the point of beginning, estimated to contain **2,497.27 acres**, all as more particularly outlined on a plat on file in the Office of Mineral Resources, Department of Natural Resources. All bearings, distances and coordinates are based on Louisiana Coordinate System of 1927, (North or South Zone), where applicable.

NOTE: The above description of the Tract nominated for lease has been provided and corrected, where required, exclusively by the nomination party. Any mineral lease selected from this Tract and awarded by the Louisiana State Mineral and Energy Board shall be without warranty of any kind, either express, implied, or statutory, including, but not limited to, the implied warranties of merchantability and fitness for a particular purpose. Should the mineral lease awarded by the Louisiana State Mineral and Energy Board be subsequently modified, cancelled or abrogated due to the existence of conflicting leases, operating agreements, private claims or other future obligations or conditions which may affect all or any portion of the leased Tract, it shall not relieve the Lessee of the obligation to pay any bonus due thereon to the Louisiana State Mineral and Energy Board, nor shall the Louisiana State Mineral and Energy Board be obligated to refund any consideration paid by the Lessor prior to such modification, cancellation, or abrogation, including, but not limited to, bonuses, rentals and royalties.

NOTE: The State of Louisiana does hereby reserve, and this lease shall be subject to, the imprescriptible right of surface use in the nature of a servitude in favor of the Department of Natural Resources, including its Offices and Commissions, for the sole purpose of implementing, constructing, servicing and maintaining approved coastal zone management and/or restoration projects. Utilization of any and all rights derived under this lease by the mineral lessee, its agents, successors or assigns, shall not interfere with nor hinder the reasonable surface use by the Department of Natural Resources, its Offices or Commissions, as herein above reserved.

Applicant: CYPRESS ENERGY CORPORATION

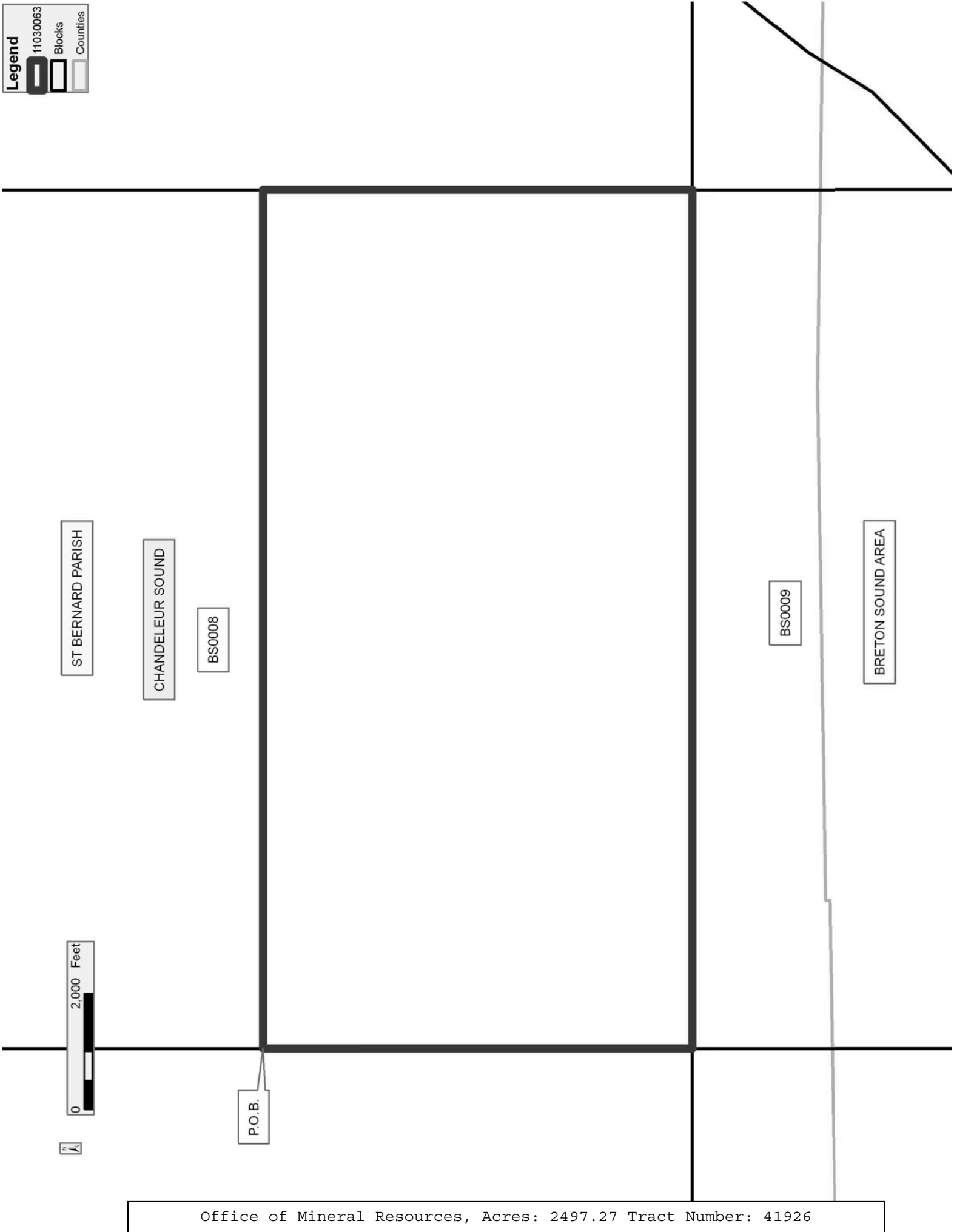
Bidder	Cash Payment	Price/ Acre	Rental	Oil	Gas	Other

Legend

11030063

Blocks

Counties



**TRACT 41927 - Portion of Blocks 5, and 8, Main Pass Area, Revised, Plaquemines and St. Bernard Parishes, Louisiana**

All of the lands now or formerly constituting the beds and bottoms of all water bodies of every nature and description as to which title is vested in the State of Louisiana, together with all islands arising therein and other lands formed by accretion or by reliction, where allowed by law, excepting tax adjudicated lands, and not presently under mineral lease on March 9, 2011, situated in Plaquemines and St. Bernard Parishes, Louisiana, and more particularly described as follows: Beginning at a point on having Coordinates of X = 2,753,350.00 and Y = 373,954.99; thence East 9,634.33 feet to a point on the Coastline as defined by the report of the Special Master and set forth in the judgment decree in June of 1975 by the Supreme Court of the United States in the litigation styled United States v. State of Louisiana, et al No. 9 Original, having Coordinates of X = 2,762,984.33 and Y = 373,954.99; thence along the Coastline the following courses: Southwesterly on a straight line to a point having Coordinates of X = 2,761,138 and Y = 371,491, Southwesterly on a straight line to a point having Coordinates of X = 2,758,093 and Y = 367,862, Southwesterly on a straight line to a point having Coordinates of X = 2,757,465 and Y = 366,796, Southwesterly on a straight line to a point having Coordinates of X = 2,755,709 and Y = 364,596, Southwesterly on a straight line to a point having Coordinates of X = 2,755,451 and Y = 364,182, Southwesterly on a straight line to a point having Coordinates of X = 2,755,015 and Y = 363,480 and Southwesterly on a straight line to a point having Coordinates of X = 2,753,349.94 and Y = 361,846.85; thence North 00 degrees 00 minutes 01 seconds East 12,108.14 feet to the point of beginning, estimated to contain **1,369.36 acres**, all as more particularly outlined on a plat on file in the Office of Mineral Resources, Department of Natural Resources. All bearings, distances and coordinates are based on Louisiana Coordinate System of 1927, (North or South Zone), where applicable.

NOTE: The above description of the Tract nominated for lease has been provided and corrected, where required, exclusively by the nomination party. Any mineral lease selected from this Tract and awarded by the Louisiana State Mineral and Energy Board shall be without warranty of any kind, either express, implied, or statutory, including, but not limited to, the implied warranties of merchantability and fitness for a particular purpose. Should the mineral lease awarded by the Louisiana State Mineral and Energy Board be subsequently modified, cancelled or abrogated due to the existence of conflicting leases, operating agreements, private claims or other future obligations or conditions which may affect all or any portion of the leased Tract, it shall not relieve the Lessee of the obligation to pay any bonus due thereon to the Louisiana State Mineral and Energy Board, nor shall the Louisiana State Mineral and Energy Board be obligated to refund any consideration paid by the Lessor prior to such modification, cancellation, or abrogation, including, but not limited to, bonuses, rentals and royalties.

NOTE: The State of Louisiana does hereby reserve, and this lease shall be subject to, the imprescriptible right of surface use in the nature of a servitude in favor of the Department of Natural Resources, including its Offices and Commissions, for the sole purpose of implementing, constructing, servicing and maintaining approved coastal zone management and/or restoration projects. Utilization of any and all rights derived under this lease by the mineral lessee, its agents, successors or assigns, shall not interfere with nor hinder the reasonable surface use by the Department of Natural Resources, its Offices or Commissions, as herein above reserved.

Applicant: CYPRESS ENERGY CORPORATION

Bidder	Cash Payment	Price/ Acre	Rental	Oil	Gas	Other



ST BERNARD PARISH



P.O.B.

BS0008

CHANDELEUR SOUND

MP0005

PLAQUEMINES PARISH

MP0008

MAIN PASS AREA, REVISED

BS0009

**TRACT 41928 - Portion of Block 7, Breton Sound Area, St. Bernard Parish, Louisiana**

All of the lands now or formerly constituting the beds and bottoms of all water bodies of every nature and description as to which title is vested in the State of Louisiana, together with all islands arising therein and other lands formed by accretion or by reliction, where allowed by law, excepting tax adjudicated lands, and not presently under mineral lease on March 9, 2011, situated in St. Bernard Parish, Louisiana, and more particularly described as follows: Beginning at a point on having Coordinates of X = 2,723,850.00 and Y = 373,954.99; thence East 14,749.99 feet to a point having Coordinates of X = 2,738,599.99 and Y = 373,954.99; thence South 7,375.00 feet to a point having Coordinates of X = 2,738,599.99 and Y = 366,579.99; thence West 14,749.99 feet to a point having Coordinates of X = 2,723,850.00 and Y = 366,579.98; thence North 7,375.00 feet to the point of beginning, estimated to contain **2,497.27 acres**, all as more particularly outlined on a plat on file in the Office of Mineral Resources, Department of Natural Resources. All bearings, distances and coordinates are based on Louisiana Coordinate System of 1927, (North or South Zone), where applicable.

NOTE: The above description of the Tract nominated for lease has been provided and corrected, where required, exclusively by the nomination party. Any mineral lease selected from this Tract and awarded by the Louisiana State Mineral and Energy Board shall be without warranty of any kind, either express, implied, or statutory, including, but not limited to, the implied warranties of merchantability and fitness for a particular purpose. Should the mineral lease awarded by the Louisiana State Mineral and Energy Board be subsequently modified, cancelled or abrogated due to the existence of conflicting leases, operating agreements, private claims or other future obligations or conditions which may affect all or any portion of the leased Tract, it shall not relieve the Lessee of the obligation to pay any bonus due thereon to the Louisiana State Mineral and Energy Board, nor shall the Louisiana State Mineral and Energy Board be obligated to refund any consideration paid by the Lessor prior to such modification, cancellation, or abrogation, including, but not limited to, bonuses, rentals and royalties.

NOTE: The State of Louisiana does hereby reserve, and this lease shall be subject to, the imprescriptible right of surface use in the nature of a servitude in favor of the Department of Natural Resources, including its Offices and Commissions, for the sole purpose of implementing, constructing, servicing and maintaining approved coastal zone management and/or restoration projects. Utilization of any and all rights derived under this lease by the mineral lessee, its agents, successors or assigns, shall not interfere with nor hinder the reasonable surface use by the Department of Natural Resources, its Offices or Commissions, as herein above reserved.

Applicant: CYPRESS ENERGY CORPORATION

Bidder	Cash Payment	Price/ Acre	Rental	Oil	Gas	Other

Legend

11030067

Blocks

ST BERNARD PARISH

CHANDELEUR SOUND

BS0007

BS0010

BRETON SOUND AREA

P.O.B.



**TRACT 41929 - Cameron Parish, Louisiana**

All of the lands now or formerly constituting the beds and bottoms of all water bodies of every nature and description as to which title is vested in the State of Louisiana, together with all islands arising therein and other lands formed by accretion or by reliction, where allowed by law, excepting tax adjudicated lands, and not presently under mineral lease on March 9, 2011, situated in Cameron Parish, Louisiana, and more particularly described as follows: Beginning at a point having Coordinates of X = 1,508,245.00 and Y = 386,600.00; thence East 11,015.00 feet to a point having Coordinates of X = 1,519,260.00 and Y = 386,600.00; thence South approximately 11,188 feet to a point on the Northern boundary of the Rockefeller Wildlife Refuge having a Coordinate of X = 1,519,260.00; thence Westerly along the Northern boundary of the said Rockefeller Wildlife Refuge to a point of intersection with a North-South line having a Coordinate of X = 1,508,245.00; thence North approximately 10,934 feet along said line to the point of beginning, **LESS AND EXCEPT** that portion, if any, of the above described tract which may lie within the boundary of the Rockefeller Wildlife Refuge; the above described tract containing approximately **107 acres**, all as more particularly outlined on a plat on file in the Office of Mineral Resources, Department of Natural Resources. All bearings, distances and coordinates are based on Louisiana Coordinate System of 1927, (North or South Zone), where applicable.

NOTE: The above description of the Tract nominated for lease has been provided and corrected, where required, exclusively by the nomination party. Any mineral lease selected from this Tract and awarded by the Louisiana State Mineral and Energy Board shall be without warranty of any kind, either express, implied, or statutory, including, but not limited to, the implied warranties of merchantability and fitness for a particular purpose. Should the mineral lease awarded by the Louisiana State Mineral and Energy Board be subsequently modified, cancelled or abrogated due to the existence of conflicting leases, operating agreements, private claims or other future obligations or conditions which may affect all or any portion of the leased Tract, it shall not relieve the Lessee of the obligation to pay any bonus due thereon to the Louisiana State Mineral and Energy Board, nor shall the Louisiana State Mineral and Energy Board be obligated to refund any consideration paid by the Lessor prior to such modification, cancellation, or abrogation, including, but not limited to, bonuses, rentals and royalties.

NOTE: The State of Louisiana does hereby reserve, and this lease shall be subject to, the imprescriptible right of surface use in the nature of a servitude in favor of the Department of Natural Resources, including its Offices and Commissions, for the sole purpose of implementing, constructing, servicing and maintaining approved coastal zone management and/or restoration projects. Utilization of any and all rights derived under this lease by the mineral lessee, its agents, successors or assigns, shall not interfere with nor hinder the reasonable surface use by the

Department of Natural Resources, its Offices or Commissions, as herein above reserved.

Applicant: THEOPHILUS OIL, GAS & LAND SERVICES, LLC

Bidder	Cash Payment	Price/ Acre	Rental	Oil	Gas	Other

11030125

Wildlife

Active\_Leases

IMAGERY.DOQQ\_2008\_1M\_CII

CAMERON PARISH

T15S - R5W

SECOND LAKE

ROCKEFELLER WILDLIFE REFUGE

HOG BAYOU

P.O.B.

0 2,000 Feet



**TRACT 41930 - Cameron Parish, Louisiana**

All of the lands now or formerly constituting the beds and bottoms of all water bodies of every nature and description as to which title is vested in the State of Louisiana, together with all islands arising therein and other lands formed by accretion or by reliction, where allowed by law, excepting tax adjudicated lands, and not presently under mineral lease on March 9, 2011, situated in Cameron Parish, Louisiana, and more particularly described as follows: Beginning at a point having Coordinates of X = 1,493,033.33 and Y = 386,600.00; thence East 15,211.67 feet to a point having Coordinates of X = 1,508,245.00 and Y = 386,600.00; thence South approximately 10,934 feet to a point on the Northern boundary of the Rockefeller Wildlife Refuge having a Coordinate of X = 1,508,245.00; thence Westerly along the Northern boundary of said Rockefeller Wildlife Refuge to a point of intersection with the Louisiana Coastline, as decreed by the Supreme Court of the United States, as determined by a Special Master appointed therein, in litigation styled *United States v. State of Louisiana et al No. 9 Original*, in 1975; thence Northwesterly on a straight line along said Louisiana Coastline to a point having Coordinates of X = 1,493,033.33 and Y = 377,611.20; thence North 8,988.80 feet to the point of beginning, **LESS AND EXCEPT** that portion, if any, of the above described tract which may lie within the boundary of the Rockefeller Wildlife Refuge; the above described tract containing approximately **259 acres**, all as more particularly outlined on a plat on file in the Office of Mineral Resources, Department of Natural Resources. All bearings, distances and coordinates are based on Louisiana Coordinate System of 1927, (North or South Zone), where applicable.

NOTE: The above description of the Tract nominated for lease has been provided and corrected, where required, exclusively by the nomination party. Any mineral lease selected from this Tract and awarded by the Louisiana State Mineral and Energy Board shall be without warranty of any kind, either express, implied, or statutory, including, but not limited to, the implied warranties of merchantability and fitness for a particular purpose. Should the mineral lease awarded by the Louisiana State Mineral and Energy Board be subsequently modified, cancelled or abrogated due to the existence of conflicting leases, operating agreements, private claims or other future obligations or conditions which may affect all or any portion of the leased Tract, it shall not relieve the Lessee of the obligation to pay any bonus due thereon to the Louisiana State Mineral and Energy Board, nor shall the Louisiana State Mineral and Energy Board be obligated to refund any consideration paid by the Lessor prior to such modification, cancellation, or abrogation, including, but not limited to, bonuses, rentals and royalties.

NOTE: The State of Louisiana does hereby reserve, and this lease shall be subject to, the imprescriptible right of surface use in the nature of a servitude in favor of the Department of Natural Resources, including its Offices and Commissions, for the sole purpose of implementing, constructing, servicing and maintaining approved coastal zone management



and/or restoration projects. Utilization of any and all rights derived under this lease by the mineral lessee, its agents, successors or assigns, shall not interfere with nor hinder the reasonable surface use by the Department of Natural Resources, its Offices or Commissions, as herein above reserved.

Applicant: THEOPHILUS OIL, GAS & LAND SERVICES, LLC

Bidder	Cash Payment	Price/ Acre	Rental	Oil	Gas	Other

11030124

Wildlife

Blocks

IMAGERY.DOQQ\_2008\_1M\_CII

0 3,000 Feet



CAMERON PARISH

T15S - R5W

P.O.B.

HOG BAYOU

BEACH PRONG BAYOU

EAST CAMERON AREA, REVISED

GULF OF MEXICO

EC0003

EC0004

ROCKEFELLER WILDLIFE REFUGE

**TRACT 41931 - Portion of Block 10, Breton Sound Area, Plaquemines and St. Bernard Parishes, Louisiana**

All of the lands now or formerly constituting the beds and bottoms of all water bodies of every nature and description as to which title is vested in the State of Louisiana, together with all islands arising therein and other lands formed by accretion or by reliction, where allowed by law, excepting tax adjudicated lands, and not presently under mineral lease on March 9, 2011, situated in Plaquemines and St. Bernard Parishes, Louisiana, and more particularly described as follows: Beginning at a point on having Coordinates of X = 2,723,850.00 and Y = 366,579.98; thence East 14,749.99 feet to a point having Coordinates of X = 2,738,599.99 and Y = 366,579.99; thence South 7,374.99 feet to a point having Coordinates of X = 2,738,600.00 and Y = 359,205.00; thence West 14,750.01 feet to a point having Coordinates of X = 2,723,850.00 and Y = 359,205.00; thence North 7,374.99 feet to the point of beginning, estimated to contain **2,497.27 acres**, all as more particularly outlined on a plat on file in the Office of Mineral Resources, Department of Natural Resources. All bearings, distances and coordinates are based on Louisiana Coordinate System of 1927, (North or South Zone), where applicable.

NOTE: The above description of the Tract nominated for lease has been provided and corrected, where required, exclusively by the nomination party. Any mineral lease selected from this Tract and awarded by the Louisiana State Mineral and Energy Board shall be without warranty of any kind, either express, implied, or statutory, including, but not limited to, the implied warranties of merchantability and fitness for a particular purpose. Should the mineral lease awarded by the Louisiana State Mineral and Energy Board be subsequently modified, cancelled or abrogated due to the existence of conflicting leases, operating agreements, private claims or other future obligations or conditions which may affect all or any portion of the leased Tract, it shall not relieve the Lessee of the obligation to pay any bonus due thereon to the Louisiana State Mineral and Energy Board, nor shall the Louisiana State Mineral and Energy Board be obligated to refund any consideration paid by the Lessor prior to such modification, cancellation, or abrogation, including, but not limited to, bonuses, rentals and royalties.

NOTE: The State of Louisiana does hereby reserve, and this lease shall be subject to, the imprescriptible right of surface use in the nature of a servitude in favor of the Department of Natural Resources, including its Offices and Commissions, for the sole purpose of implementing, constructing, servicing and maintaining approved coastal zone management and/or restoration projects. Utilization of any and all rights derived under this lease by the mineral lessee, its agents, successors or assigns, shall not interfere with nor hinder the reasonable surface use by the Department of Natural Resources, its Offices or Commissions, as herein above reserved.

Applicant: CYPRESS ENERGY CORPORATION

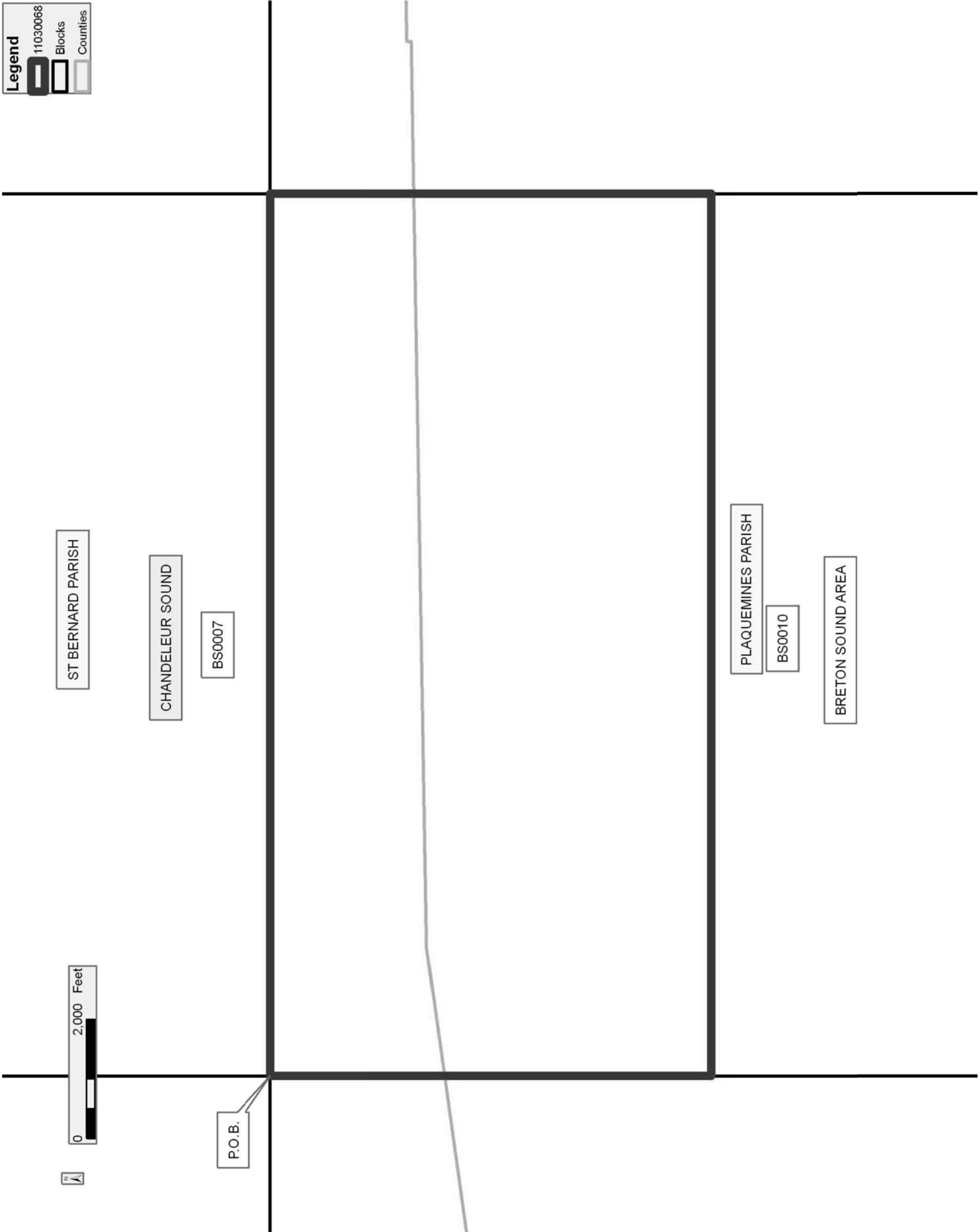
Bidder	Cash Payment	Price/ Acre	Rental	Oil	Gas	Other

Legend

11030068

Blocks

Counties



**TRACT 41932 - Portion of Block 9, Breton Sound Area, Plaquemines and St. Bernard Parishes, Louisiana**

All of the lands now or formerly constituting the beds and bottoms of all water bodies of every nature and description as to which title is vested in the State of Louisiana, together with all islands arising therein and other lands formed by accretion or by reliction, where allowed by law, excepting tax adjudicated lands, and not presently under mineral lease on March 9, 2011, situated in Plaquemines and St. Bernard Parishes, Louisiana, and more particularly described as follows: Beginning at a point on having Coordinates of X = 2,738,599.99 and Y = 366,579.99; thence East 14,750.01 feet to a point having Coordinates of X = 2,753,350.00 and Y = 366,580.00; thence South 4,733.15 feet to a point on the Coastline as defined by the report of the Special Master and set forth in the judgment decree in June of 1975 by the Supreme Court of the United States in the litigation styled United States v. State of Louisiana, et al No. 9 Original, having Coordinates of X = 2,753,349.94 and Y = 361,846.85; thence Southwesterly on a straight line along said Coastline to a point having Coordinates of X = 2,750,656.50 and Y = 359,205.00; thence West 12,056.50 feet to a point having Coordinates of X = 2,738,600.00 and Y = 359,205.00; thence North 7,374.99 feet to the point of beginning, estimated to contain **2,415.59 acres**, all as more particularly outlined on a plat on file in the Office of Mineral Resources, Department of Natural Resources. All bearings, distances and coordinates are based on Louisiana Coordinate System of 1927, (North or South Zone), where applicable.

NOTE: The above description of the Tract nominated for lease has been provided and corrected, where required, exclusively by the nomination party. Any mineral lease selected from this Tract and awarded by the Louisiana State Mineral and Energy Board shall be without warranty of any kind, either express, implied, or statutory, including, but not limited to, the implied warranties of merchantability and fitness for a particular purpose. Should the mineral lease awarded by the Louisiana State Mineral and Energy Board be subsequently modified, cancelled or abrogated due to the existence of conflicting leases, operating agreements, private claims or other future obligations or conditions which may affect all or any portion of the leased Tract, it shall not relieve the Lessee of the obligation to pay any bonus due thereon to the Louisiana State Mineral and Energy Board, nor shall the Louisiana State Mineral and Energy Board be obligated to refund any consideration paid by the Lessor prior to such modification, cancellation, or abrogation, including, but not limited to, bonuses, rentals and royalties.

NOTE: The State of Louisiana does hereby reserve, and this lease shall be subject to, the imprescriptible right of surface use in the nature of a servitude in favor of the Department of Natural Resources, including its Offices and Commissions, for the sole purpose of implementing, constructing, servicing and maintaining approved coastal zone management and/or restoration projects. Utilization of any and all rights derived under this lease by the mineral lessee, its agents, successors or assigns,

shall not interfere with nor hinder the reasonable surface use by the Department of Natural Resources, its Offices or Commissions, as herein above reserved.

Applicant: CYPRESS ENERGY CORPORATION

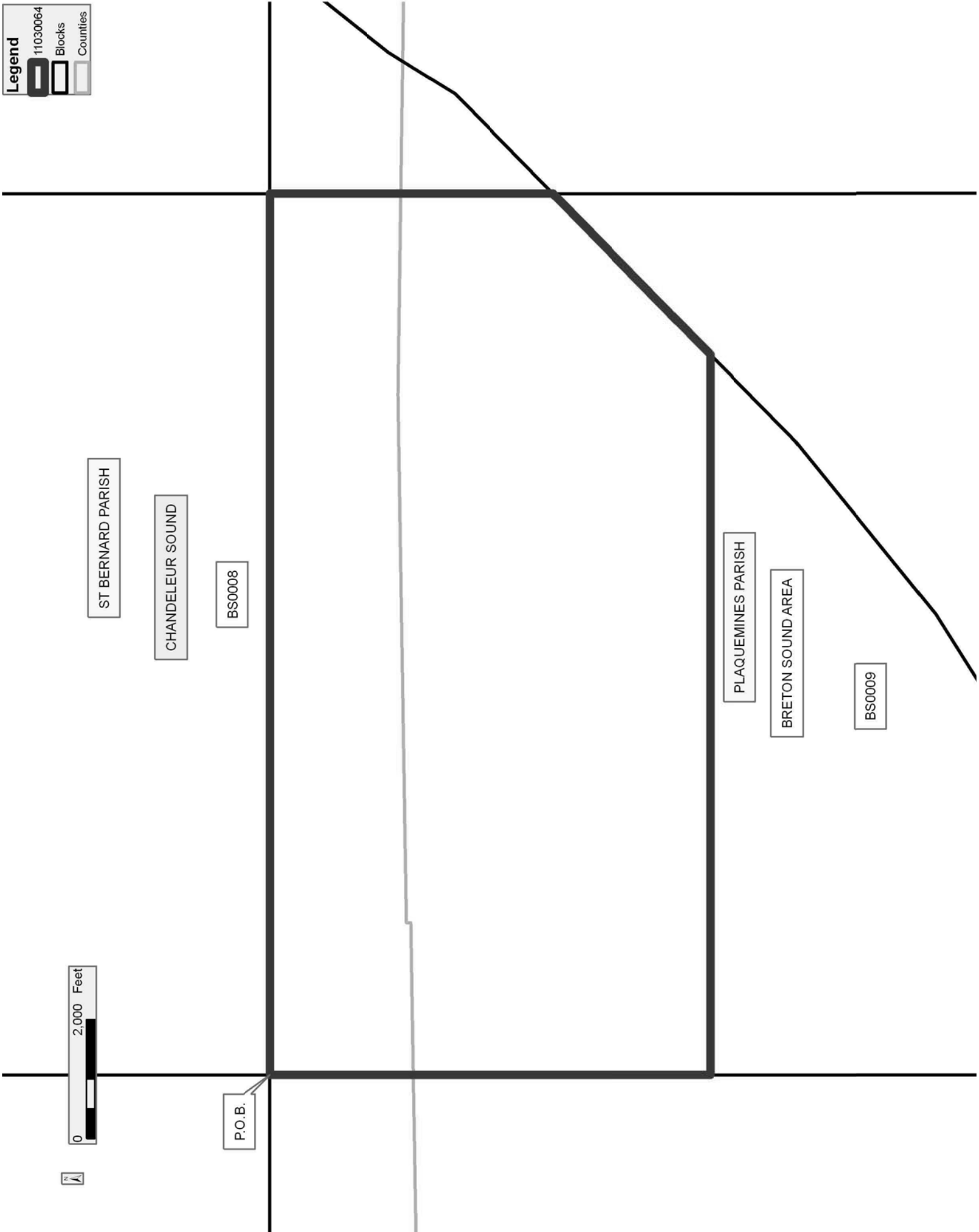
Bidder	Cash Payment	Price/ Acre	Rental	Oil	Gas	Other

Legend

11030064

Blocks

Counties





**TRACT 41933 - Portion of Block 9, Breton Sound Area, Plaquemines Parish, Louisiana**

All of the lands now or formerly constituting the beds and bottoms of all water bodies of every nature and description as to which title is vested in the State of Louisiana, together with all islands arising therein and other lands formed by accretion or by reliction, where allowed by law, excepting tax adjudicated lands, and not presently under mineral lease on March 9, 2011, situated in Plaquemines Parish, Louisiana, and more particularly described as follows: Beginning at a point on having Coordinates of X = 2,738,600.00 and Y = 359,205.00; thence East 12,056.50 feet to a point on the Coastline as defined by the report of the Special Master and set forth in the judgment decree in June of 1975 by the Supreme Court of the United States in the litigation styled United States v. State of Louisiana, et al No. 9 Original, having Coordinates of X = 2,750,656.50 and Y = 359,205.00; thence along the Coastline the following courses: Southwesterly on a straight line to a point having Coordinates of X = 2,749,221 and Y = 357,797, Southwesterly on a straight line to a point having Coordinates of X = 2,746,309 and Y = 355,438, Southwesterly on a straight line to a point having Coordinates of X = 2,744,222 and Y = 354,125, Southwesterly on a straight line to a point having Coordinates of X = 2,743,352 and Y = 353,794, Southwesterly on a straight line to a point having Coordinates of X = 2,742,583 and Y = 353,754 and Southwesterly on a straight line to a point having Coordinates of X = 2,741,119.92 and Y = 351,830.01; thence West 2,519.91 feet to a point having Coordinates of X = 2,738,600.01 and Y = 351,830.01; thence North 7,374.99 feet to the point of beginning, estimated to contain **1,250.79 acres**, all as more particularly outlined on a plat on file in the Office of Mineral Resources, Department of Natural Resources. All bearings, distances and coordinates are based on Louisiana Coordinate System of 1927, (North or South Zone), where applicable.

NOTE: The above description of the Tract nominated for lease has been provided and corrected, where required, exclusively by the nomination party. Any mineral lease selected from this Tract and awarded by the Louisiana State Mineral and Energy Board shall be without warranty of any kind, either express, implied, or statutory, including, but not limited to, the implied warranties of merchantability and fitness for a particular purpose. Should the mineral lease awarded by the Louisiana State Mineral and Energy Board be subsequently modified, cancelled or abrogated due to the existence of conflicting leases, operating agreements, private claims or other future obligations or conditions which may affect all or any portion of the leased Tract, it shall not relieve the Lessee of the obligation to pay any bonus due thereon to the Louisiana State Mineral and Energy Board, nor shall the Louisiana State Mineral and Energy Board be obligated to refund any consideration paid by the Lessor prior to such modification, cancellation, or abrogation, including, but not limited to, bonuses, rentals and royalties.

NOTE: The State of Louisiana does hereby reserve, and this lease shall be subject to, the imprescriptible right of surface use in the nature of a servitude in favor of the Department of Natural Resources, including its Offices and Commissions, for the sole purpose of implementing, constructing, servicing and maintaining approved coastal zone management and/or restoration projects. Utilization of any and all rights derived under this lease by the mineral lessee, its agents, successors or assigns, shall not interfere with nor hinder the reasonable surface use by the Department of Natural Resources, its Offices or Commissions, as herein above reserved.

Applicant: CYPRESS ENERGY CORPORATION

Bidder	Cash Payment	Price/ Acre	Rental	Oil	Gas	Other

Legend

11030066

Blocks

PLAQUEMINES PARISH

GULF OF MEXICO

BS0009

BRETON SOUND AREA

BS0024

P.O.B.



**TRACT 41934 - Cameron Parish, Louisiana**

All of the lands now or formerly constituting the beds and bottoms of all water bodies of every nature and description as to which title is vested in the State of Louisiana, together with all islands arising therein and other lands formed by accretion or by reliction, where allowed by law, excepting tax adjudicated lands, and not presently under mineral lease on March 9, 2011, situated in Cameron Parish, Louisiana, and more particularly described as follows: Beginning at a point on the Louisiana Coastline, as decreed by the Supreme Court of the United States, as determined by a Special Master appointed therein, in litigation styled *United States v. State of Louisiana et al No. 9 Original*, in 1975, having Coordinates of X = 1,586,780 and Y = 335,220; thence Northwesterly on a straight line along the said Louisiana Coastline to a point of intersection with the Southern boundary of the Rockefeller Wildlife Refuge; thence along the meanders of boundary of said Rockefeller Wildlife Refuge the following: Southeasterly, Northerly, Easterly and Southerly to a point of intersection with the said Louisiana Coastline; thence along the said Louisiana Coastline the following: Northwesterly on a straight line to a point having Coordinates of X = 1,589,460 and Y = 334,525 and Northwesterly on a straight line to the point of beginning, **LESS AND EXCEPT** that portion, if any, of the above described tract which may lie within the boundary of the Rockefeller Wildlife Refuge; the above described tract containing approximately **75 acres**, all as more particularly outlined on a plat on file in the Office of Mineral Resources, Department of Natural Resources. All bearings, distances and coordinates are based on Louisiana Coordinate System of 1927, (North or South Zone), where applicable.

NOTE: The above description of the Tract nominated for lease has been provided and corrected, where required, exclusively by the nomination party. Any mineral lease selected from this Tract and awarded by the Louisiana State Mineral and Energy Board shall be without warranty of any kind, either express, implied, or statutory, including, but not limited to, the implied warranties of merchantability and fitness for a particular purpose. Should the mineral lease awarded by the Louisiana State Mineral and Energy Board be subsequently modified, cancelled or abrogated due to the existence of conflicting leases, operating agreements, private claims or other future obligations or conditions which may affect all or any portion of the leased Tract, it shall not relieve the Lessee of the obligation to pay any bonus due thereon to the Louisiana State Mineral and Energy Board, nor shall the Louisiana State Mineral and Energy Board be obligated to refund any consideration paid by the Lessor prior to such modification, cancellation, or abrogation, including, but not limited to, bonuses, rentals and royalties.

NOTE: The State of Louisiana does hereby reserve, and this lease shall be subject to, the imprescriptible right of surface use in the nature of a servitude in favor of the Department of Natural Resources, including its Offices and Commissions, for the sole purpose of implementing,

constructing, servicing and maintaining approved coastal zone management and/or restoration projects. Utilization of any and all rights derived under this lease by the mineral lessee, its agents, successors or assigns, shall not interfere with nor hinder the reasonable surface use by the Department of Natural Resources, its Offices or Commissions, as herein above reserved.

Applicant: THEOPHILUS OIL, GAS & LAND SERVICES, LLC

Bidder	Cash Payment	Price/ Acre	Rental	Oil	Gas	Other



CAMERON PARISH

ROCKEFELLER WILDLIFE REFUGE

P.O.B.

EAST CAMERON AREA, REVISED

GULF OF MEXICO

EC0020

EC0019

EC0021

VR0001

VERMILION AREA, REVISED