

**TRACT 41905 - East Feliciana and St. Helena Parishes, Louisiana**

All of the lands now or formerly constituting the beds and bottoms of all water bodies of every nature and description as to which title is vested in the State of Louisiana, together with all islands arising therein and other lands formed by accretion or by reliction, where allowed by law, excepting tax adjudicated lands, and not presently under mineral lease on March 9, 2011, situated in East Feliciana and St. Helena Parishes, Louisiana, and more particularly described as follows: Beginning at a point having Coordinates of X = 2,143,115.00 and Y = 838,035.00; thence East 12,439.00 feet to a point having Coordinates of X = 2,155,554.00 and Y = 838,035.00; thence South 6,523.00 feet to the Northeast corner of State Lease No. 19502 having Coordinates of X = 2,155,554.00 and Y = 831,512.00; thence along the boundary of said State Lease No. 19502 the following courses: West 6,000.00 feet and South 500.00 feet to a point having Coordinates of X = 2,149,554.00 and Y = 831,012.00; thence West 6,439.00 feet to a point having Coordinates of X = 2,143,115.00 and Y = 831,012.00; thence North 7,023.00 feet to the point of beginning, containing approximately **66 acres**, all as more particularly outlined on a plat on file in the Office of Mineral Resources, Department of Natural Resources. All bearings, distances and coordinates are based on Louisiana Coordinate System of 1927, (North or South Zone), where applicable.

NOTE: The above description of the Tract nominated for lease has been provided and corrected, where required, exclusively by the nomination party. Any mineral lease selected from this Tract and awarded by the Louisiana State Mineral and Energy Board shall be without warranty of any kind, either express, implied, or statutory, including, but not limited to, the implied warranties of merchantability and fitness for a particular purpose. Should the mineral lease awarded by the Louisiana State Mineral and Energy Board be subsequently modified, cancelled or abrogated due to the existence of conflicting leases, operating agreements, private claims or other future obligations or conditions which may affect all or any portion of the leased Tract, it shall not relieve the Lessee of the obligation to pay any bonus due thereon to the Louisiana State Mineral and Energy Board, nor shall the Louisiana State Mineral and Energy Board be obligated to refund any consideration paid by the Lessor prior to such modification, cancellation, or abrogation, including, but not limited to, bonuses, rentals and royalties.

NOTE: The above Tract is located upon a restricted scenic river and all operations in this area must be conducted in strict conformity with the regulations of the Corps of Engineers, U.S. Army.

Bidder	Cash Payment	Price/ Acre	Rental	Oil	Gas	Other


Applicant: CHUCK KEETON

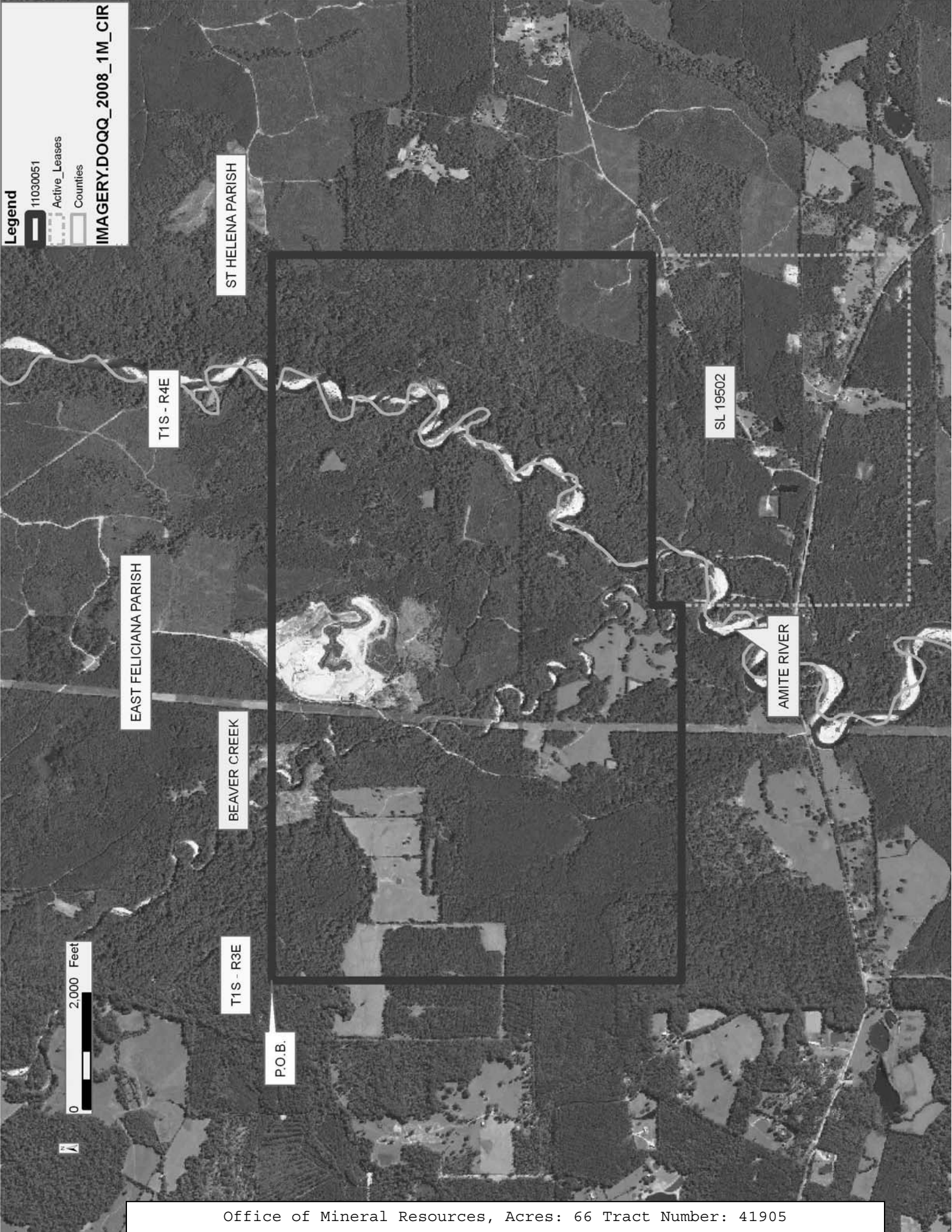
**Legend**

11030051

Active\_Leases

Counties

IMAGERY.DOQQ\_2008\_1M\_CIR



**TRACT 41906 - Avoyelles Parish, Louisiana**

All of the lands now or formerly constituting the beds and bottoms of all water bodies of every nature and description as to which title is vested in the State of Louisiana, together with all islands arising therein and other lands formed by accretion or by reliction, where allowed by law, excepting tax adjudicated lands, and not presently under mineral lease on March 9, 2011, situated in Avoyelles Parish, Louisiana, and more particularly described as follows: Beginning at a point on having Coordinates of X = 1,762,992.16 and Y = 819,988.56; thence South 89 degrees 50 minutes 58 seconds East 15,940.06 feet to a point having Coordinates of X = 1,778,932.16 and Y = 819,946.65; thence South 16,122.39 feet to a point having Coordinates of X = 1,778,932.16 and Y = 803,824.26; thence West 15,940.00 feet to a point having Coordinates of X = 1,762,992.16 and Y = 803,824.26; thence North 16,164.30 feet to the point of beginning, containing approximately **25 acres**, all as more particularly outlined on a plat on file in the Office of Mineral Resources, Department of Natural Resources. All bearings, distances and coordinates are based on Louisiana Coordinate System of 1927, (North or South Zone), where applicable.

NOTE: The above description of the Tract nominated for lease has been provided and corrected, where required, exclusively by the nomination party. Any mineral lease selected from this Tract and awarded by the Louisiana State Mineral and Energy Board shall be without warranty of any kind, either express, implied, or statutory, including, but not limited to, the implied warranties of merchantability and fitness for a particular purpose. Should the mineral lease awarded by the Louisiana State Mineral and Energy Board be subsequently modified, cancelled or abrogated due to the existence of conflicting leases, operating agreements, private claims or other future obligations or conditions which may affect all or any portion of the leased Tract, it shall not relieve the Lessee of the obligation to pay any bonus due thereon to the Louisiana State Mineral and Energy Board, nor shall the Louisiana State Mineral and Energy Board be obligated to refund any consideration paid by the Lessor prior to such modification, cancellation, or abrogation, including, but not limited to, bonuses, rentals and royalties.

Bidder	Cash Payment	Price/ Acre	Rental	Oil	Gas	Other

Applicant: LESLIE M. COOPER

AVOYELLES PARISH

T1S - R4E

BAYOU ROUGE

T2S - R4E

P.O.B.

0 4,000 Feet

**TRACT 41907 - Avoyelles Parish, Louisiana**

All of the lands now or formerly constituting the beds and bottoms of all water bodies of every nature and description as to which title is vested in the State of Louisiana, together with all islands arising therein and other lands formed by accretion or by reliction, where allowed by law, excepting tax adjudicated lands, and not presently under mineral lease on March 9, 2011, situated in Avoyelles Parish, Louisiana, and more particularly described as follows: Beginning at a point on having Coordinates of X = 1,834,117.57 and Y = 808,531.63; thence East 11,310.09 feet to a point having Coordinates of X = 1,845,427.67 and Y = 808,531.63; thence South 13,325.88 feet to a point having Coordinates of X = 1,845,427.67 and Y = 795,205.75; thence West 11,310.09 feet to a point having Coordinates of X = 1,834,117.57 and Y = 795,205.75; thence North 13,325.88 feet to the point of beginning, containing approximately **41 acres**, all as more particularly outlined on a plat on file in the Office of Mineral Resources, Department of Natural Resources. All bearings, distances and coordinates are based on Louisiana Coordinate System of 1927, (North or South Zone), where applicable.

NOTE: The above description of the Tract nominated for lease has been provided and corrected, where required, exclusively by the nomination party. Any mineral lease selected from this Tract and awarded by the Louisiana State Mineral and Energy Board shall be without warranty of any kind, either express, implied, or statutory, including, but not limited to, the implied warranties of merchantability and fitness for a particular purpose. Should the mineral lease awarded by the Louisiana State Mineral and Energy Board be subsequently modified, cancelled or abrogated due to the existence of conflicting leases, operating agreements, private claims or other future obligations or conditions which may affect all or any portion of the leased Tract, it shall not relieve the Lessee of the obligation to pay any bonus due thereon to the Louisiana State Mineral and Energy Board, nor shall the Louisiana State Mineral and Energy Board be obligated to refund any consideration paid by the Lessor prior to such modification, cancellation, or abrogation, including, but not limited to, bonuses, rentals and royalties.

Applicant: LESLIE M. COOPER

Bidder	Cash Payment	Price/ Acre	Rental	Oil	Gas	Other



11030040

IMAGERY.DOQQ\_2008\_1M\_CII



AVOYELLES PARISH

T2S - R6E

BAYOU CASON

P.O.B.

ATCHAFALAYA RIVER

TURNERS BAYOU





**TRACT 41908 - Avoyelles and St. Landry Parishes, Louisiana**

All of the lands now or formerly constituting the beds and bottoms of all water bodies of every nature and description as to which title is vested in the State of Louisiana, together with all islands arising therein and other lands formed by accretion or by reliction, where allowed by law, excepting tax adjudicated lands, and not presently under mineral lease on March 9, 2011, situated in Avoyelles and St. Landry Parishes, Louisiana, and more particularly described as follows: Beginning at a point on having Coordinates of X = 1,768,443.68 and Y = 803,824.26; thence East 15,940.00 feet to a point having Coordinates of X = 1,784,383.68 and Y = 803,824.26; thence South 15,755.00 feet to a point having Coordinates of X = 1,784,383.68 and Y = 788,069.26; thence West 15,940.00 feet to a point having Coordinates of X = 1,768,443.68 and Y = 788,069.26; thence North 15,755.00 feet to the point of beginning, containing approximately **22 acres**, all as more particularly outlined on a plat on file in the Office of Mineral Resources, Department of Natural Resources. All bearings, distances and coordinates are based on Louisiana Coordinate System of 1927, (North or South Zone), where applicable.

NOTE: The above description of the Tract nominated for lease has been provided and corrected, where required, exclusively by the nomination party. Any mineral lease selected from this Tract and awarded by the Louisiana State Mineral and Energy Board shall be without warranty of any kind, either express, implied, or statutory, including, but not limited to, the implied warranties of merchantability and fitness for a particular purpose. Should the mineral lease awarded by the Louisiana State Mineral and Energy Board be subsequently modified, cancelled or abrogated due to the existence of conflicting leases, operating agreements, private claims or other future obligations or conditions which may affect all or any portion of the leased Tract, it shall not relieve the Lessee of the obligation to pay any bonus due thereon to the Louisiana State Mineral and Energy Board, nor shall the Louisiana State Mineral and Energy Board be obligated to refund any consideration paid by the Lessor prior to such modification, cancellation, or abrogation, including, but not limited to, bonuses, rentals and royalties.

Applicant: LESLIE M. COOPER

Bidder	Cash Payment	Price/ Acre	Rental	Oil	Gas	Other

**Legend**  
11030038  
Counties  
IMAGERY.DOQQ\_2008\_1M\_CIR



**TRACT 41909 - Avoyelles and St. Landry Parishes, Louisiana**

All of the lands now or formerly constituting the beds and bottoms of all water bodies of every nature and description as to which title is vested in the State of Louisiana, together with all islands arising therein and other lands formed by accretion or by reliction, where allowed by law, excepting tax adjudicated lands, and not presently under mineral lease on March 9, 2011, situated in Avoyelles and St. Landry Parishes, Louisiana, and more particularly described as follows: Beginning at a point on having Coordinates of X = 1,826,462.53 and Y = 795,205.75; thence East 13,310.09 feet to a point having Coordinates of X = 1,839,772.62 and Y = 795,205.75; thence South 13,325.88 feet to a point having Coordinates of X = 1,839,772.62 and Y = 781,879.87; thence West 13,310.09 feet to a point having Coordinates of X = 1,826,462.53 and Y = 781,879.87; thence North 13,325.88 feet to the point of beginning, containing approximately **29 acres**, all as more particularly outlined on a plat on file in the Office of Mineral Resources, Department of Natural Resources. All bearings, distances and coordinates are based on Louisiana Coordinate System of 1927, (North or South Zone), where applicable.

NOTE: The above description of the Tract nominated for lease has been provided and corrected, where required, exclusively by the nomination party. Any mineral lease selected from this Tract and awarded by the Louisiana State Mineral and Energy Board shall be without warranty of any kind, either express, implied, or statutory, including, but not limited to, the implied warranties of merchantability and fitness for a particular purpose. Should the mineral lease awarded by the Louisiana State Mineral and Energy Board be subsequently modified, cancelled or abrogated due to the existence of conflicting leases, operating agreements, private claims or other future obligations or conditions which may affect all or any portion of the leased Tract, it shall not relieve the Lessee of the obligation to pay any bonus due thereon to the Louisiana State Mineral and Energy Board, nor shall the Louisiana State Mineral and Energy Board be obligated to refund any consideration paid by the Lessor prior to such modification, cancellation, or abrogation, including, but not limited to, bonuses, rentals and royalties.

Applicant: LESLIE M. COOPER

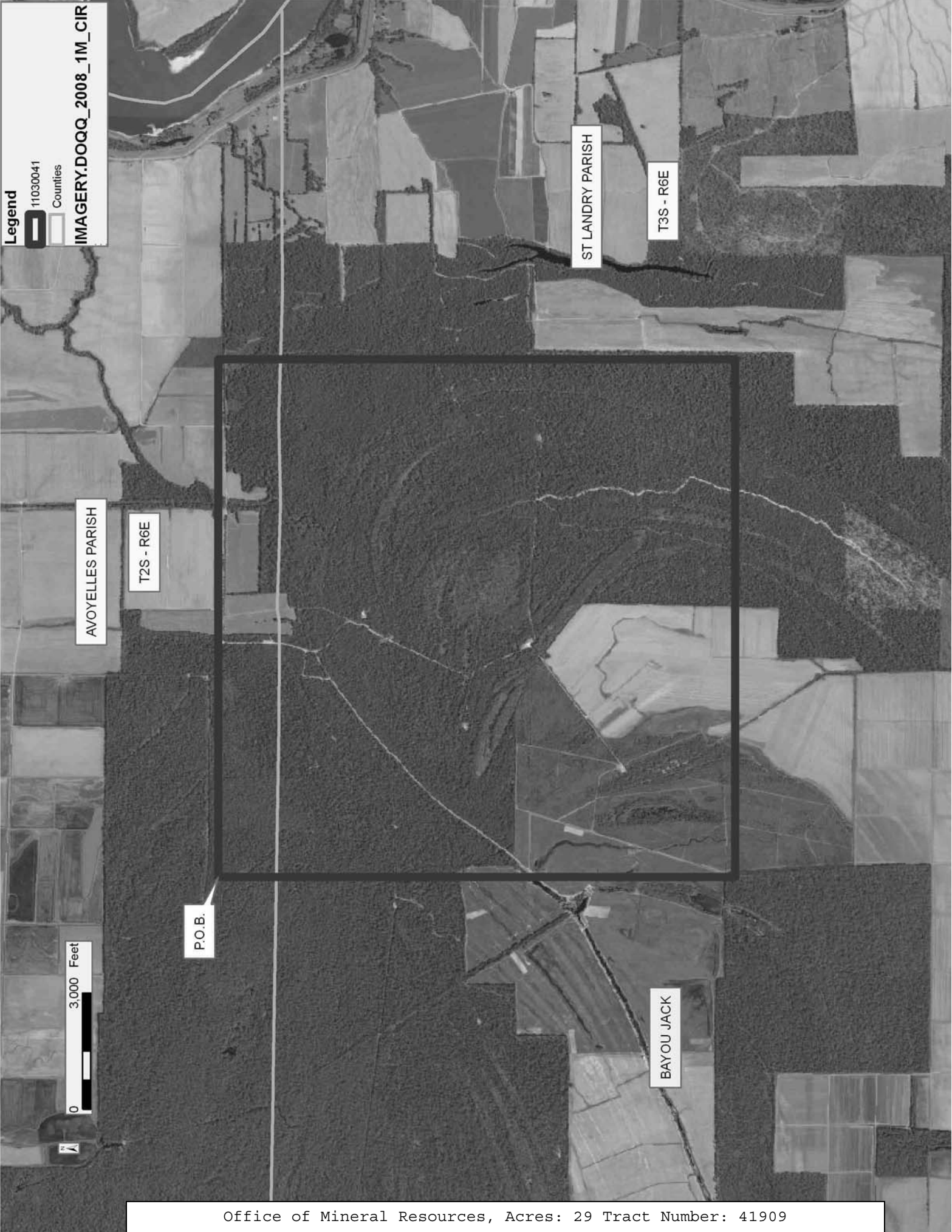
Bidder	Cash Payment	Price/ Acre	Rental	Oil	Gas	Other

Legend

11030041

Counties

IMAGERY.DOQQ\_2008\_1M\_CIR



#### **TRACT 41910 - St. Landry Parish, Louisiana**

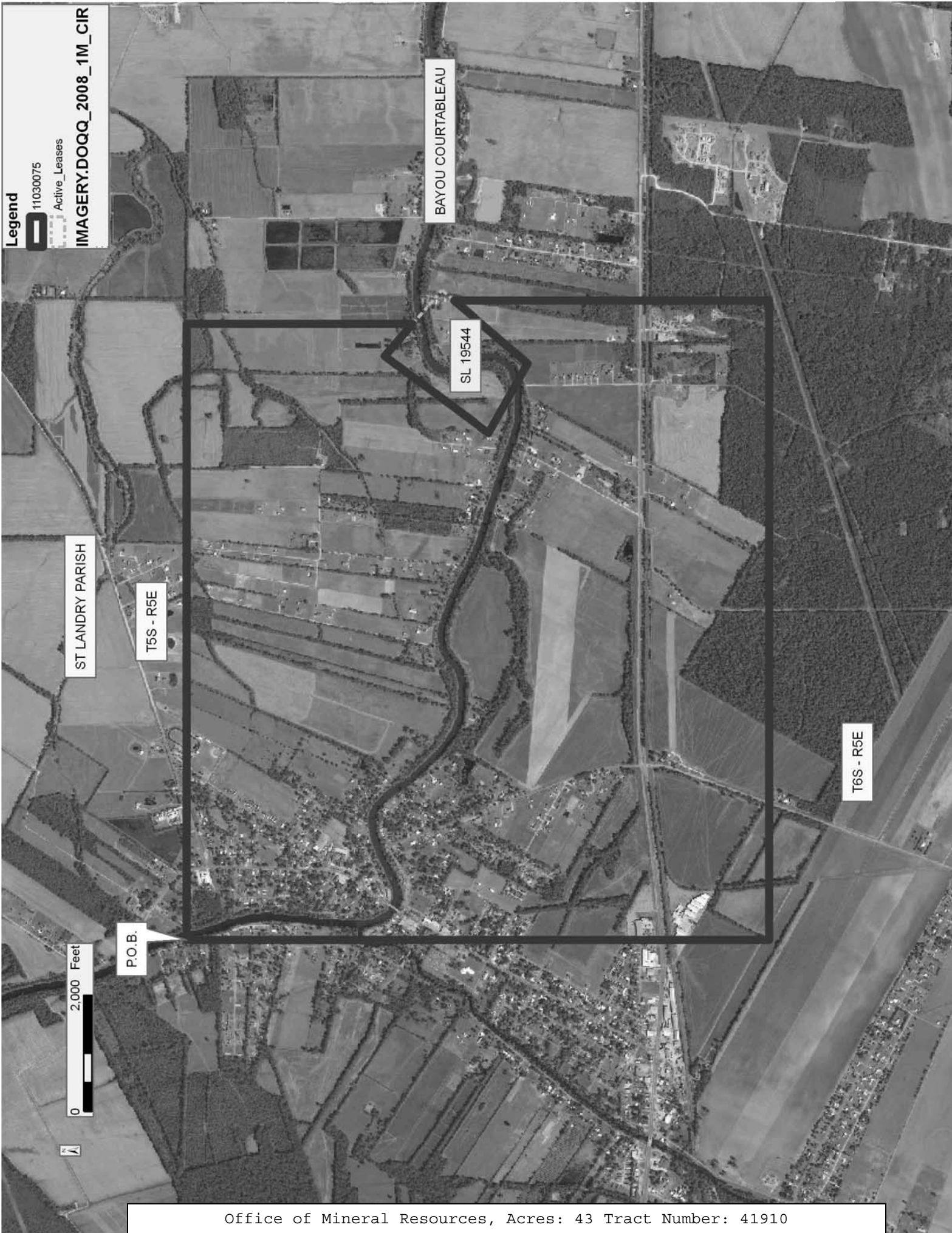
All of the lands now or formerly constituting the beds and bottoms of all water bodies of every nature and description as to which title is vested in the State of Louisiana, together with all islands arising therein and other lands formed by accretion or by reliction, where allowed by law, excepting tax adjudicated lands, and not presently under mineral lease on March 9, 2011, situated in St. Landry Parish, Louisiana, and more particularly described as follows: Beginning at a point having Coordinates of X = 1,803,650.00 and Y = 692,100.00; thence East 10,560.00 feet to a point having Coordinates of X = 1,814,210.00 and Y = 692,100.00; thence South 3,884.90 feet to a point on the North boundary of State Lease No. 19544, as amended having Coordinates of X = 1,814,210.00 and Y = 688,215.10; thence along the boundaries of said State Lease No. 19544 the following courses and distances: North 49 degrees 30 minutes 55 seconds West 728.39 feet to a corner having Coordinates of X = 1,813,656.00 and Y = 688,688.00, South 36 degrees 40 minutes 40 seconds West 2,208.21 feet to a corner having Coordinates of X = 1,812,337.00 and Y = 686,917.00, South 60 degrees 37 minutes 43 seconds East 1,370.12 feet to a corner having Coordinates of X = 1,813,531.00 and Y = 686,245.00 and North 40 degrees 28 minutes 58 seconds East 1,662.00 feet to a point having Coordinates of X = 1,814,610.00 and Y = 687,509.12; thence South 5,409.12 feet to a point having Coordinates of X = 1,814,610.00 and Y = 682,100.00; thence West 10,960.00 feet to a point having Coordinates of X = 1,803,650.00 and Y = 682,100.00; thence North 10,000.00 feet to the point of beginning, containing approximately **43 acres**, all as more particularly outlined on a plat on file in the Office of Mineral Resources, Department of Natural Resources. All bearings, distances and coordinates are based on Louisiana Coordinate System of 1927, (North or South Zone), where applicable.

NOTE: The above description of the Tract nominated for lease has been provided and corrected, where required, exclusively by the nomination party. Any mineral lease selected from this Tract and awarded by the Louisiana State Mineral and Energy Board shall be without warranty of any kind, either express, implied, or statutory, including, but not limited to, the implied warranties of merchantability and fitness for a particular purpose. Should the mineral lease awarded by the Louisiana State Mineral and Energy Board be subsequently modified, cancelled or abrogated due to the existence of conflicting leases, operating agreements, private claims or other future obligations or conditions which may affect all or any portion of the leased Tract, it shall not relieve the Lessee of the obligation to pay any bonus due thereon to the Louisiana State Mineral and Energy Board, nor shall the Louisiana State Mineral and Energy Board be obligated to refund any consideration paid by the Lessor prior to such modification, cancellation, or abrogation, including, but not limited to, bonuses, rentals and royalties.

Applicant: THEOPHILUS OIL, GAS & LAND SERVICES, LLC

Bidder	Cash Payment	Price/ Acre	Rental	Oil	Gas	Other





**TRACT 41911 - St. Landry Parish, Louisiana**

All of the lands now or formerly constituting the beds and bottoms of all water bodies of every nature and description as to which title is vested in the State of Louisiana, together with all islands arising therein and other lands formed by accretion or by reliction, where allowed by law, excepting tax adjudicated lands, and not presently under mineral lease on March 9, 2011, situated in St. Landry Parish, Louisiana, and more particularly described as follows: Beginning at a point having Coordinates of X = 1,814,210.00 and Y = 692,100.00; thence East 10,890.00 feet to a point having Coordinates of X = 1,825,100.00 and Y = 692,100.00; thence South 10,000.00 feet to a point having Coordinates of X = 1,825,100.00 and Y = 682,100.00; thence West 10,490.00 feet to a point having Coordinates of X = 1,814,610.00 and Y = 682,100.00; thence North 5,409.12 feet to a point on the East boundary of State Lease No. 19544, as amended having Coordinates of X = 1,814,610.00 and Y = 687,509.12; thence along the East and North boundary of said State Lease No. 19544 the following courses and distances: North 40 degrees 28 minutes 58 seconds East 277.26 feet to a corner having Coordinates of X = 1,814,790.00 and Y = 687,720.00 and North 49 degrees 30 minutes 55 seconds West 762.57 feet to a point having Coordinates of X = 1,814,210.00 and Y = 688,215.10; thence North 3,884.90 feet to the point of beginning, containing approximately **40 acres**, all as more particularly outlined on a plat on file in the Office of Mineral Resources, Department of Natural Resources. All bearings, distances and coordinates are based on Louisiana Coordinate System of 1927, (North or South Zone), where applicable.

NOTE: The above description of the Tract nominated for lease has been provided and corrected, where required, exclusively by the nomination party. Any mineral lease selected from this Tract and awarded by the Louisiana State Mineral and Energy Board shall be without warranty of any kind, either express, implied, or statutory, including, but not limited to, the implied warranties of merchantability and fitness for a particular purpose. Should the mineral lease awarded by the Louisiana State Mineral and Energy Board be subsequently modified, cancelled or abrogated due to the existence of conflicting leases, operating agreements, private claims or other future obligations or conditions which may affect all or any portion of the leased Tract, it shall not relieve the Lessee of the obligation to pay any bonus due thereon to the Louisiana State Mineral and Energy Board, nor shall the Louisiana State Mineral and Energy Board be obligated to refund any consideration paid by the Lessor prior to such modification, cancellation, or abrogation, including, but not limited to, bonuses, rentals and royalties.

Applicant: THEOPHILUS OIL, GAS & LAND SERVICES, LLC

Bidder	Cash Payment	Price/ Acre	Rental	Oil	Gas	Other

**Legend**  
11030076  
Active Leases  
IMAGERY.DOQQ\_2008\_1M\_CIR



**TRACT 41912 - St. Martin Parish, Louisiana**

All of the lands now or formerly constituting the beds and bottoms of all water bodies of every nature and description as to which title is vested in the State of Louisiana, together with all islands arising therein and other lands formed by accretion or by reliction, where allowed by law, excepting tax adjudicated lands, and not presently under mineral lease on March 9, 2011, situated in St. Martin Parish, Louisiana, and more particularly described as follows: Beginning at a point having Coordinates of X = 1,932,391.00 and Y = 562,169.00; thence East 5,332.00 feet to a point having Coordinates of X = 1,937,723.00 and Y = 562,169.00; thence South 2,860.00 feet to a point having Coordinates of X = 1,937,723.00 and Y = 559,309.00; thence West 5,332.00 feet to a point having Coordinates of X = 1,932,391.00 and Y = 559,309.00; thence North 2,860.00 feet to the point of beginning, (This tract includes only waterbottoms claimed and owned by the state and specifically excludes any land which the state may claim or own and to which the mineral rights are vested in the state), containing approximately **16 acres**, all as more particularly outlined on a plat on file in the Office of Mineral Resources, Department of Natural Resources. All bearings, distances and coordinates are based on Louisiana Coordinate System of 1927, (North or South Zone), where applicable.

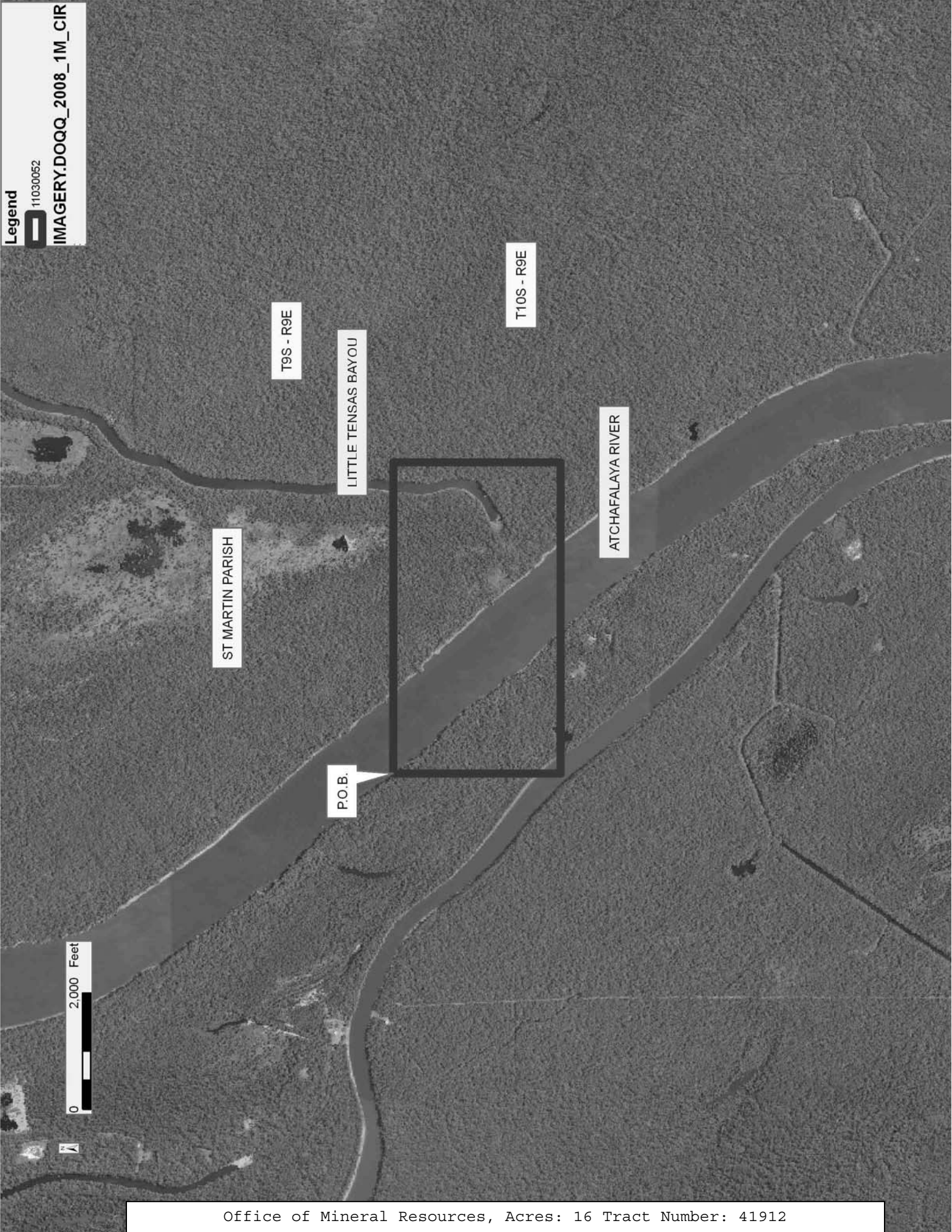
NOTE: The above description of the Tract nominated for lease has been provided and corrected, where required, exclusively by the nomination party. Any mineral lease selected from this Tract and awarded by the Louisiana State Mineral and Energy Board shall be without warranty of any kind, either express, implied, or statutory, including, but not limited to, the implied warranties of merchantability and fitness for a particular purpose. Should the mineral lease awarded by the Louisiana State Mineral and Energy Board be subsequently modified, cancelled or abrogated due to the existence of conflicting leases, operating agreements, private claims or other future obligations or conditions which may affect all or any portion of the leased Tract, it shall not relieve the Lessee of the obligation to pay any bonus due thereon to the Louisiana State Mineral and Energy Board, nor shall the Louisiana State Mineral and Energy Board be obligated to refund any consideration paid by the Lessor prior to such modification, cancellation, or abrogation, including, but not limited to, bonuses, rentals and royalties.

NOTE: This acreage is entirely within the boundary of the Atchafalaya Basin Area.

Applicant: SCHOEFFLER ENERGY GROUP, INC.

Bidder	Cash Payment	Price/ Acre	Rental	Oil	Gas	Other





**TRACT 41913 - St. Martin Parish, Louisiana**

All of the lands now or formerly constituting the beds and bottoms of all water bodies of every nature and description as to which title is vested in the State of Louisiana, together with all islands arising therein and other lands formed by accretion or by reliction, where allowed by law, excepting tax adjudicated lands, and not presently under mineral lease on March 9, 2011, situated in St. Martin Parish, Louisiana, and more particularly described as follows: Beginning at a point having Coordinates of X = 1,937,723.00 and Y = 559,309.00; thence East 5,332.00 feet to a point having Coordinates of X = 1,943,055.00 and Y = 559,309.00; thence South 2,860.00 feet to a point having Coordinates of X = 1,943,055.00 and Y = 556,449.00; thence West 2,204.00 feet to the Northeast corner of State Lease No. 19934 having Coordinates of X = 1,940,851.00 and Y = 556,449.00; thence West 3,128.00 feet along the North boundary of said State Lease No. 19934 to its Northwest corner having Coordinates of X = 1,937,723.00 and Y = 556,449.00; thence North 2,860.00 feet to the point of beginning, (This tract includes only waterbottoms claimed and owned by the state and specifically excludes any land which the state may claim or own and to which the mineral rights are vested in the state), containing approximately **8 acres**, all as more particularly outlined on a plat on file in the Office of Mineral Resources, Department of Natural Resources. All bearings, distances and coordinates are based on Louisiana Coordinate System of 1927, (North or South Zone), where applicable.

NOTE: The above description of the Tract nominated for lease has been provided and corrected, where required, exclusively by the nomination party. Any mineral lease selected from this Tract and awarded by the Louisiana State Mineral and Energy Board shall be without warranty of any kind, either express, implied, or statutory, including, but not limited to, the implied warranties of merchantability and fitness for a particular purpose. Should the mineral lease awarded by the Louisiana State Mineral and Energy Board be subsequently modified, cancelled or abrogated due to the existence of conflicting leases, operating agreements, private claims or other future obligations or conditions which may affect all or any portion of the leased Tract, it shall not relieve the Lessee of the obligation to pay any bonus due thereon to the Louisiana State Mineral and Energy Board, nor shall the Louisiana State Mineral and Energy Board be obligated to refund any consideration paid by the Lessor prior to such modification, cancellation, or abrogation, including, but not limited to, bonuses, rentals and royalties.

NOTE: This acreage is entirely within the boundary of the Atchafalaya Basin Area.

Applicant: SCHOEFFLER ENERGY GROUP, INC.

Bidder	Cash Payment	Price/ Acre	Rental	Oil	Gas	Other

Legend

11030058

Active Leases

IMAGERY.DOQQ\_2008\_1M\_CIR



**TRACT 41914 - St. Martin Parish, Louisiana**

All of the lands now or formerly constituting the beds and bottoms of all water bodies of every nature and description as to which title is vested in the State of Louisiana, together with all islands arising therein and other lands formed by accretion or by reliction, where allowed by law, excepting tax adjudicated lands, and not presently under mineral lease on March 9, 2011, situated in St. Martin Parish, Louisiana, and more particularly described as follows: Beginning at a point having Coordinates of X = 1,926,855.00 and Y = 559,309.00; thence East 5,536.00 feet to a point having Coordinates of X = 1,932,391.00 and Y = 559,309.00; thence South 2,860.00 feet to a point having Coordinates of X = 1,932,391.00 and Y = 556,449.00; thence West 5,536.00 feet to a point having Coordinates of X = 1,926,855.00 and Y = 556,449.00; thence North 2,860.00 feet to the point of beginning, (This tract includes only waterbottoms claimed and owned by the state and specifically excludes any land which the state may claim or own and to which the mineral rights are vested in the state), containing approximately **128 acres**, all as more particularly outlined on a plat on file in the Office of Mineral Resources, Department of Natural Resources. All bearings, distances and coordinates are based on Louisiana Coordinate System of 1927, (North or South Zone), where applicable., all as more particularly outlined on a plat on file in the Office of Mineral Resources, Department of Natural Resources. All bearings, distances and coordinates are based on Louisiana Coordinate System of 1927, (North or South Zone), where applicable.

NOTE: The above description of the Tract nominated for lease has been provided and corrected, where required, exclusively by the nomination party. Any mineral lease selected from this Tract and awarded by the Louisiana State Mineral and Energy Board shall be without warranty of any kind, either express, implied, or statutory, including, but not limited to, the implied warranties of merchantability and fitness for a particular purpose. Should the mineral lease awarded by the Louisiana State Mineral and Energy Board be subsequently modified, cancelled or abrogated due to the existence of conflicting leases, operating agreements, private claims or other future obligations or conditions which may affect all or any portion of the leased Tract, it shall not relieve the Lessee of the obligation to pay any bonus due thereon to the Louisiana State Mineral and Energy Board, nor shall the Louisiana State Mineral and Energy Board be obligated to refund any consideration paid by the Lessor prior to such modification, cancellation, or abrogation, including, but not limited to, bonuses, rentals and royalties.

NOTE: This acreage is entirely within the boundary of the Atchafalaya Basin Area.

Applicant: SCHOEFFLER ENERGY GROUP, INC.

Bidder	Cash Payment	Price/ Acre	Rental	Oil	Gas	Other



Legend

11030057

IMAGERY.DOQQ\_2008\_1M\_CIR

0 2,000 Feet

N

ST MARTIN PARISH

T9S - R9E

P.O.B.

LAKE MONGOULOIS