

TRACT 41880 - Portion of Block 4, East Cameron Area, Revised, Cameron Parish, Louisiana

The beds and bottoms of all water bodies belonging to the State of Louisiana located in Block 4, East Cameron Area, Revised, together with any present lands formed by accretion to the shoreline or islands formed therein, located in Cameron Parish, Louisiana, owned by and not presently under mineral lease as of March 9, 2011, from the State of Louisiana, the geographical area of which is more fully described as follows: Beginning at a point on the West line of Block 4, East Cameron Area, Revised, having Coordinates of X = 1,493,033.33 and Y = 366,679.59; thence East approximately 15,094 feet to a point on the South boundary of the Rockefeller Wildlife Refuge having a Coordinate of Y = 366,679.59; thence Southeasterly along the meanders of said South boundary to a point on the East line of said Block 4 having a Coordinate of X = 1,509,516.10; thence South approximately 5,979 feet along the East line of said Block 4 to its Southeast corner having Coordinates of X = 1,509,516.10 and Y = 360,000.00; thence West 13,325.51 feet along the South line of said Block 4 to a point having Coordinates of X = 1,496,190.59 and Y = 360,000.00; thence North 811.06 feet to a point having Coordinates of X = 1,496,190.59 and Y = 360,811.06; thence West 3,157.26 feet to a point on the West line of said Block 4 having Coordinates of X = 1,493,033.33 and Y = 360,811.06; thence North 5,868.53 feet along the West line of said Block 4 to the point of beginning, **LESS AND EXCEPT** that portion, if any, of the above described tract which may lie within the boundary of the Rockefeller Wildlife Refuge; the above described tract containing approximately **2,458 acres**, all as more particularly outlined on a plat on file in the Office of Mineral Resources, Department of Natural Resources. All bearings, distances and coordinates are based on Louisiana Coordinate System of 1927, (North or South Zone).

NOTE: The above description of the Tract nominated for lease has been provided and corrected, where required, exclusively by the nomination party. Any mineral lease selected from this Tract and awarded by the Louisiana State Mineral and Energy Board shall be without warranty of any kind, either express, implied, or statutory, including, but not limited to, the implied warranties of merchantability and fitness for a particular purpose. Should the mineral lease awarded by the Louisiana State Mineral and Energy Board be subsequently modified, cancelled or abrogated due to the existence of conflicting leases, operating agreements, private claims or other future obligations or conditions which may affect all or any portion of the leased Tract, it shall not relieve the Lessee of the obligation to pay any bonus due thereon to the Louisiana State Mineral and Energy Board, nor shall the Louisiana State Mineral and Energy Board be obligated to refund any consideration paid by the Lessor prior to such modification, cancellation, or abrogation, including, but not limited to, bonuses, rentals and royalties.

NOTE: The State of Louisiana does hereby reserve, and this lease shall be subject to, the imprescriptible right of surface use in the nature of a servitude in favor of the Department of Natural Resources, including its

Offices and Commissions, for the sole purpose of implementing, constructing, servicing and maintaining approved coastal zone management and/or restoration projects. Utilization of any and all rights derived under this lease by the mineral lessee, its agents, successors or assigns, shall not interfere with nor hinder the reasonable surface use by the Department of Natural Resources, its Offices or Commissions, as herein above reserved.

Applicant: THEOPHILUS OIL, GAS & LAND SERVICES, LLC

Bidder	Cash Payment	Price/Acre	Rental	Oil	Gas	Other

Legend

11030145

Wildlife

Blocks

ROCKEFELLER WILDLIFE REFUGE

EC0005

CAMERON PARISH

GULF OF MEXICO

EC0004

EC0009

EAST CAMERON AREA, REVISED

EC0010

P.O.B.



TRACT 41881 - Portion of Block 5, East Cameron Area, Revised, Cameron Parish, Louisiana

The beds and bottoms of all water bodies belonging to the State of Louisiana located in Block 5, East Cameron Area, Revised, together with any present lands formed by accretion to the shoreline or islands formed therein, located in Cameron Parish, Louisiana, owned by and not presently under mineral lease as of March 9, 2011, from the State of Louisiana, the geographical area of which is more fully described as follows: Beginning at the Southwest corner of Block 5, East Cameron Area, Revised having Coordinates of X = 1,509,516.10 and Y = 360,000.00; thence North approximately 5,979 feet along the West line of said Block 5 to a point on the South boundary of the Rockefeller Wildlife Refuge having a Coordinate of X = 1,509,516.10; thence Southeasterly along the meanders of said South boundary to a point of intersection with an East-West line having a Coordinate of Y = 360,000.00; thence West approximately 11,863 feet to the point of beginning, **LESS AND EXCEPT** that portion, if any, of the above described tract which may lie within the boundary of the Rockefeller Wildlife Refuge; the above described tract containing approximately **813 acres**, all as more particularly outlined on a plat on file in the Office of Mineral Resources, Department of Natural Resources. All bearings, distances and coordinates are based on Louisiana Coordinate System of 1927, (North or South Zone).

NOTE: The above description of the Tract nominated for lease has been provided and corrected, where required, exclusively by the nomination party. Any mineral lease selected from this Tract and awarded by the Louisiana State Mineral and Energy Board shall be without warranty of any kind, either express, implied, or statutory, including, but not limited to, the implied warranties of merchantability and fitness for a particular purpose. Should the mineral lease awarded by the Louisiana State Mineral and Energy Board be subsequently modified, cancelled or abrogated due to the existence of conflicting leases, operating agreements, private claims or other future obligations or conditions which may affect all or any portion of the leased Tract, it shall not relieve the Lessee of the obligation to pay any bonus due thereon to the Louisiana State Mineral and Energy Board, nor shall the Louisiana State Mineral and Energy Board be obligated to refund any consideration paid by the Lessor prior to such modification, cancellation, or abrogation, including, but not limited to, bonuses, rentals and royalties.

NOTE: The State of Louisiana does hereby reserve, and this lease shall be subject to, the imprescriptible right of surface use in the nature of a servitude in favor of the Department of Natural Resources, including its Offices and Commissions, for the sole purpose of implementing, constructing, servicing and maintaining approved coastal zone management and/or restoration projects. Utilization of any and all rights derived under this lease by the mineral lessee, its agents, successors or assigns, shall not interfere with nor hinder the reasonable surface use by the

Department of Natural Resources, its Offices or Commissions, as herein above reserved.

Applicant: THEOPHILUS OIL, GAS & LAND SERVICES, LLC

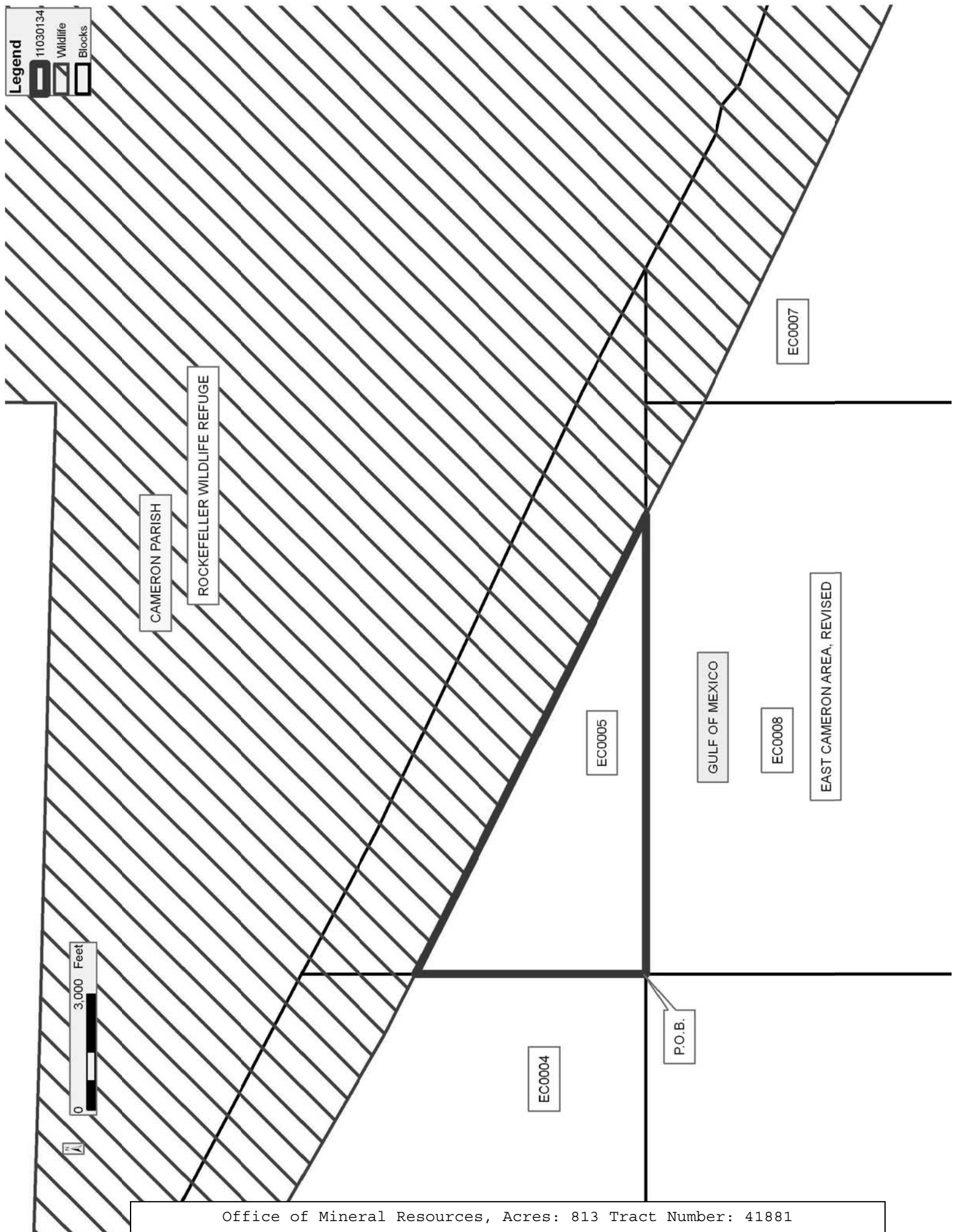
Bidder	Cash Payment	Price/Acre	Rental	Oil	Gas	Other

Legend

11030134

Wildlife

Blocks



TRACT 41882 - Portion of Blocks 10, 3, 4, and 9, East Cameron Area, Revised, Cameron Parish, Louisiana

The beds and bottoms of all water bodies belonging to the State of Louisiana located in Blocks 10, 3, 4, and 9, East Cameron Area, Revised, together with any present lands formed by accretion to the shoreline or islands formed therein, located in Cameron Parish, Louisiana, owned by and not presently under mineral lease as of March 9, 2011, from the State of Louisiana, the geographical area of which is more fully described as follows: Beginning at a point lying within Block 3, East Cameron Area, Revised having Coordinates of X = 1,487,457.39 and Y = 360,811.06; thence East 5,575.94 feet to a point on the East line of said Block 3 and the West line of Block 4 having Coordinates of X = 1,493,033.33 and Y = 360,811.06; thence East 3,157.26 feet to a point having Coordinates of X = 1,496,190.59 and Y = 360,811.06; thence South 811.06 feet to a point on the South line of said Block 4 and the North line of Block 9 having Coordinates of X = 1,496,190.59 and Y = 360,000.00; thence South 4,683.92 feet to a point on the Three Mile Line, as decreed by the Supreme Court of the United States, as determined by a Special Master appointed therein, in litigation styled *United States v. State of Louisiana et al No. 9 Original*, in 1975, having Coordinates of X = 1,496,190.59 and Y = 355,316.08; thence Northwesterly on a straight line to a point on the West line of said Block 9 and the East line of said Block 10 having Coordinates of X = 1,494,758.05 and Y = 356,070.78; thence Northwesterly on a straight line to a point having Coordinates of X = 1,493,968 and Y = 356,487; thence Northwesterly on an arc with a radius of 18,240.60 feet and a center located at X = 1,502,470 and Y = 372,625 to a point having Coordinates of X = 1,493,740 and Y = 356,609; thence Northwesterly on a straight line to a point having Coordinates of X = 1,488,240 and Y = 359,607; thence Northwesterly on a straight line to a point having Coordinates of X = 1,487,457.39 and Y = 360,000.00; thence North 811.06 feet to the point of beginning, containing approximately **632.21 acres, LESS AND EXCEPT** that portion thereof, if any, lying seaward of the line three nautical miles from the coast line of Louisiana, as said three mile line has been decreed by the Supreme Court of the United States, as determined by a Special Master appointed therein, in litigation styled **United States v. State of Louisiana et al No. 9 Original**, in 1975, all as more particularly outlined on a plat in the Office of Mineral Resources, Department of Natural Resources. All bearings, distances and coordinates are based on the Louisiana Coordinate System of 1927, (South Zone).

NOTE: The above description of the Tract nominated for lease has been provided and corrected, where required, exclusively by the nomination party. Any mineral lease selected from this Tract and awarded by the Louisiana State Mineral and Energy Board shall be without warranty of any kind, either express, implied, or statutory, including, but not limited to, the implied warranties of merchantability and fitness for a particular purpose. Should the mineral lease awarded by the Louisiana State Mineral and Energy Board be subsequently modified, cancelled or abrogated due to the existence of conflicting leases, operating agreements, private claims

or other future obligations or conditions which may affect all or any portion of the leased Tract, it shall not relieve the Lessee of the obligation to pay any bonus due thereon to the Louisiana State Mineral and Energy Board, nor shall the Louisiana State Mineral and Energy Board be obligated to refund any consideration paid by the Lessor prior to such modification, cancellation, or abrogation, including, but not limited to, bonuses, rentals and royalties.

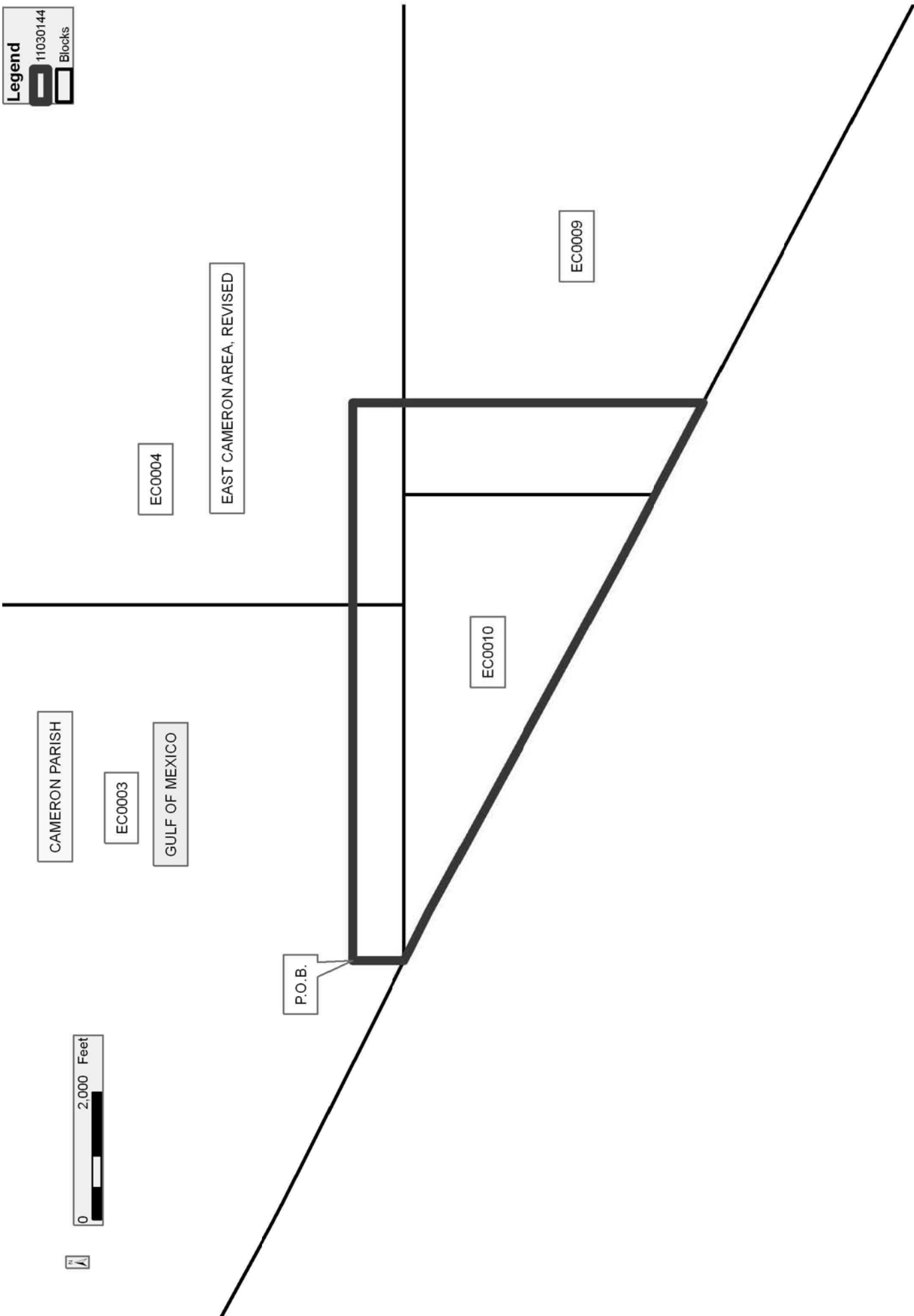
NOTE: The State of Louisiana does hereby reserve, and this lease shall be subject to, the imprescriptible right of surface use in the nature of a servitude in favor of the Department of Natural Resources, including its Offices and Commissions, for the sole purpose of implementing, constructing, servicing and maintaining approved coastal zone management and/or restoration projects. Utilization of any and all rights derived under this lease by the mineral lessee, its agents, successors or assigns, shall not interfere with nor hinder the reasonable surface use by the Department of Natural Resources, its Offices or Commissions, as herein above reserved.

Applicant: THEOPHILUS OIL, GAS & LAND SERVICES, LLC

Bidder	Cash Payment	Price/Acre	Rental	Oil	Gas	Other

Legend

11030144
Blocks



TRACT 41883 - Portion of Block 8, East Cameron Area, Revised, Cameron Parish, Louisiana

The beds and bottoms of all water bodies belonging to the State of Louisiana located in Block 8, East Cameron Area, Revised, together with any present lands formed by accretion to the shoreline or islands formed therein, located in Cameron Parish, Louisiana, owned by and not presently under mineral lease as of March 9, 2011, from the State of Louisiana, the geographical area of which is more fully described as follows: Beginning at the Northwest corner of Block 8, East Cameron Area, Revised, having Coordinates of X = 1,509,516.10 and Y = 360,000.00; thence East approximately 11,863 feet along the North line of said Block 8 to a point on the South boundary of the Rockefeller Wildlife Refuge having a Coordinate of Y = 360,000.00; thence Southeasterly along the meanders of said South boundary to a point on the East line of said Block 8 having a Coordinate of X = 1,524,274.14; thence South approximately 5,900 feet along the East line of said Block 8 to a point having Coordinates of X = 1,524,274.14 and Y = 352,620.98; thence West 14,758.04 feet to a point on the West line of said Block 8 having Coordinates of X = 1,509,516.10 and Y = 352,620.98; thence North 7,379.02 feet along the West line of said Block 8 to the point of beginning, **LESS AND EXCEPT** that portion, if any, of the above described tract which may lie within the boundary of the Rockefeller Wildlife Refuge; the above described tract containing approximately **2,451 acres**, all as more particularly outlined on a plat on file in the Office of Mineral Resources, Department of Natural Resources. All bearings, distances and coordinates are based on Louisiana Coordinate System of 1927, (North or South Zone).

NOTE: The above description of the Tract nominated for lease has been provided and corrected, where required, exclusively by the nomination party. Any mineral lease selected from this Tract and awarded by the Louisiana State Mineral and Energy Board shall be without warranty of any kind, either express, implied, or statutory, including, but not limited to, the implied warranties of merchantability and fitness for a particular purpose. Should the mineral lease awarded by the Louisiana State Mineral and Energy Board be subsequently modified, cancelled or abrogated due to the existence of conflicting leases, operating agreements, private claims or other future obligations or conditions which may affect all or any portion of the leased Tract, it shall not relieve the Lessee of the obligation to pay any bonus due thereon to the Louisiana State Mineral and Energy Board, nor shall the Louisiana State Mineral and Energy Board be obligated to refund any consideration paid by the Lessor prior to such modification, cancellation, or abrogation, including, but not limited to, bonuses, rentals and royalties.

NOTE: The State of Louisiana does hereby reserve, and this lease shall be subject to, the imprescriptible right of surface use in the nature of a servitude in favor of the Department of Natural Resources, including its Offices and Commissions, for the sole purpose of implementing, constructing, servicing and maintaining approved coastal zone management

and/or restoration projects. Utilization of any and all rights derived under this lease by the mineral lessee, its agents, successors or assigns, shall not interfere with nor hinder the reasonable surface use by the Department of Natural Resources, its Offices or Commissions, as herein above reserved.

Applicant: THEOPHILUS OIL, GAS & LAND SERVICES, LLC

Bidder	Cash Payment	Price/Acre	Rental	Oil	Gas	Other

Legend

- 11030147
- Wildlife
- Blocks

ROCKEFELLER WILDLIFE REFUGE

CAMERON PARISH

GULF OF MEXICO

EC0005

EAST CAMERON AREA, REVISED

EC0008

P.O.B.



TRACT 41884 - Portion of Block 9, East Cameron Area, Revised, Cameron Parish, Louisiana

The beds and bottoms of all water bodies belonging to the State of Louisiana located in Block 9, East Cameron Area, Revised, together with any present lands formed by accretion to the shoreline or islands formed therein, located in Cameron Parish, Louisiana, owned by and not presently under mineral lease as of March 9, 2011, from the State of Louisiana, the geographical area of which is more fully described as follows: Beginning at a point on the North line of Block 9, East Cameron Area, Revised having Coordinates of X = 1,496,190.59 and Y = 360,000.00; thence East 13,325.51 feet along the North line of said Block 9 to its Northeast corner having Coordinates of X = 1,509,516.10 and Y = 360,000.00; thence South 11,440.96 feet to a point on the Three Mile Line, as decreed by the Supreme Court of the United States, as determined by a Special Master appointed therein, in litigation styled *United States v. State of Louisiana et al No. 9 Original*, in 1975, having Coordinates of X = 1,509,516.10 and Y = 348,559.04; thence Northwesterly on a straight line to a point having Coordinates of X = 1,505,572 and Y = 350,398; thence along an arc having a radius of 18,240.60 feet and a center located at X = 1,513,280 and Y = 366,930 to a point having Coordinates of X = 1,504,778 and Y = 350,792; thence Northwesterly on a straight line to a point having Coordinates of X = 1,496,190.59 and Y = 355,316.08; thence North 4,683.92 feet to the point of beginning, containing approximately **2,493.49 acres, LESS AND EXCEPT** that portion thereof, if any, lying seaward of the line three nautical miles from the coast line of Louisiana, as said three mile line has been decreed by the Supreme Court of the United States, as determined by a Special Master appointed therein, in litigation styled **United States v. State of Louisiana et al No. 9 Original**, in 1975, all as more particularly outlined on a plat in the Office of Mineral Resources, Department of Natural Resources. All bearings, distances and coordinates are based on the Louisiana Coordinate System of 1927, (South Zone).

NOTE: The above description of the Tract nominated for lease has been provided and corrected, where required, exclusively by the nomination party. Any mineral lease selected from this Tract and awarded by the Louisiana State Mineral and Energy Board shall be without warranty of any kind, either express, implied, or statutory, including, but not limited to, the implied warranties of merchantability and fitness for a particular purpose. Should the mineral lease awarded by the Louisiana State Mineral and Energy Board be subsequently modified, cancelled or abrogated due to the existence of conflicting leases, operating agreements, private claims or other future obligations or conditions which may affect all or any portion of the leased Tract, it shall not relieve the Lessee of the obligation to pay any bonus due thereon to the Louisiana State Mineral and Energy Board, nor shall the Louisiana State Mineral and Energy Board be obligated to refund any consideration paid by the Lessor prior to such modification, cancellation, or abrogation, including, but not limited to, bonuses, rentals and royalties.

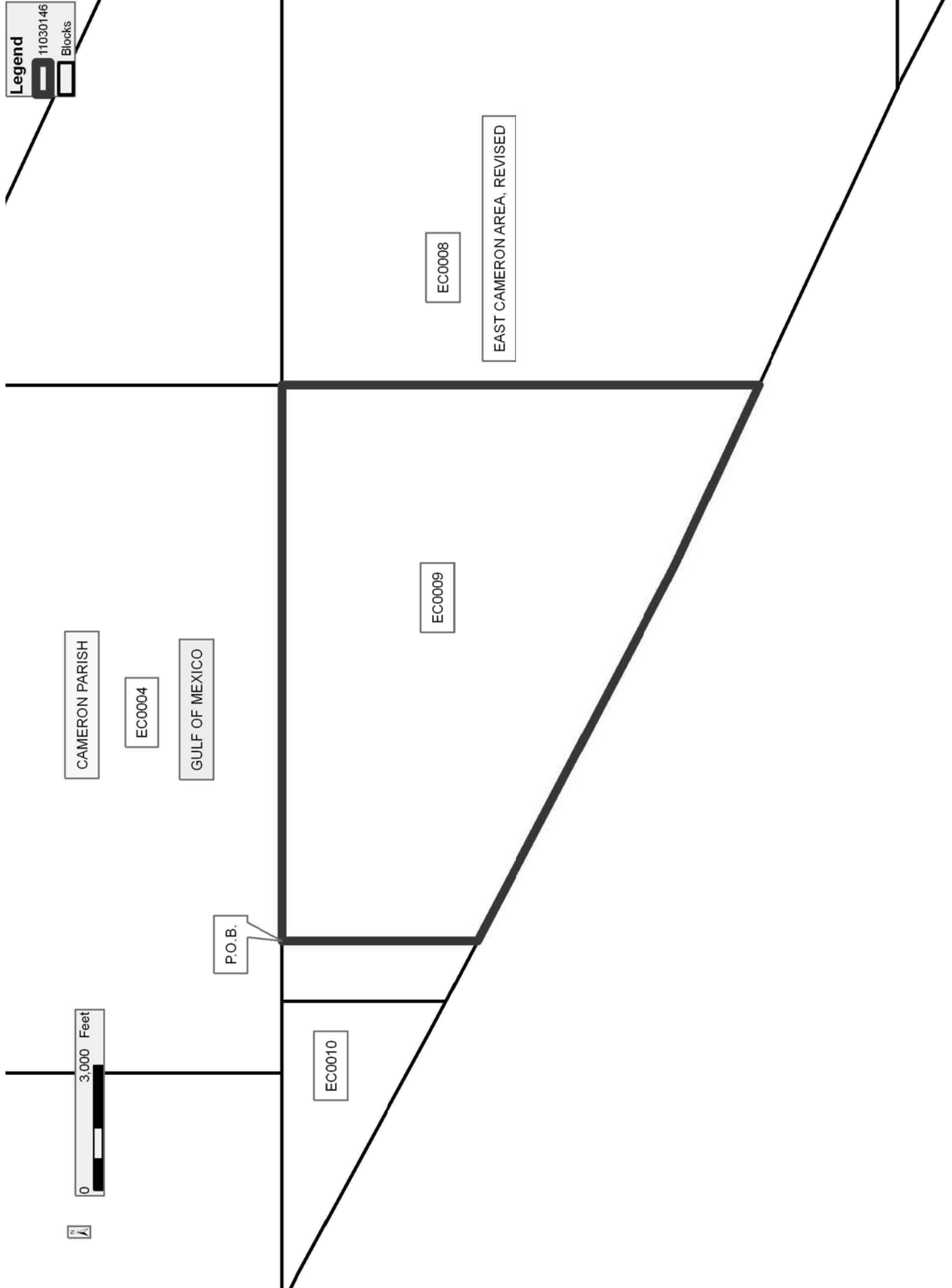
NOTE: The State of Louisiana does hereby reserve, and this lease shall be subject to, the imprescriptible right of surface use in the nature of a servitude in favor of the Department of Natural Resources, including its Offices and Commissions, for the sole purpose of implementing, constructing, servicing and maintaining approved coastal zone management and/or restoration projects. Utilization of any and all rights derived under this lease by the mineral lessee, its agents, successors or assigns, shall not interfere with nor hinder the reasonable surface use by the Department of Natural Resources, its Offices or Commissions, as herein above reserved.

Applicant: THEOPHILUS OIL, GAS & LAND SERVICES, LLC

Bidder	Cash Payment	Price/Acre	Rental	Oil	Gas	Other

Legend

11030146
Blocks



TRACT 41885 - Portion of Block 7, East Cameron Area, Revised, Cameron Parish, Louisiana

The beds and bottoms of all water bodies belonging to the State of Louisiana located in Block 7, East Cameron Area, Revised, together with any present lands formed by accretion to the shoreline or islands formed therein, located in Cameron Parish, Louisiana, owned by and not presently under mineral lease as of March 9, 2011, from the State of Louisiana, the geographical area of which is more fully described as follows: Beginning at a point on the West line of Block 7, East Cameron Area, Revised, having Coordinates of X = 1,524,274.14 and Y = 350,504.17; thence North approximately 8,017 feet to a point on the South boundary of the Rockefeller Wildlife Refuge having a Coordinate of X = 1,524,274.14; thence Southeasterly along the meanders of said South boundary to a point on the East line of said Block 7 having a Coordinate of X = 1,539,032.19; thence South approximately 1,148 feet along the East line of said Block 7 to a point having Coordinates of X = 1,539,032.19 and Y = 350,504.17; thence West 14,758.05 feet to the point of beginning, **LESS AND EXCEPT** that portion, if any, of the above described tract which may lie within the boundary of the Rockefeller Wildlife Refuge; the above described tract containing approximately **1,536 acres**, all as more particularly outlined on a plat on file in the Office of Mineral Resources, Department of Natural Resources. All bearings, distances and coordinates are based on Louisiana Coordinate System of 1927, (North or South Zone).

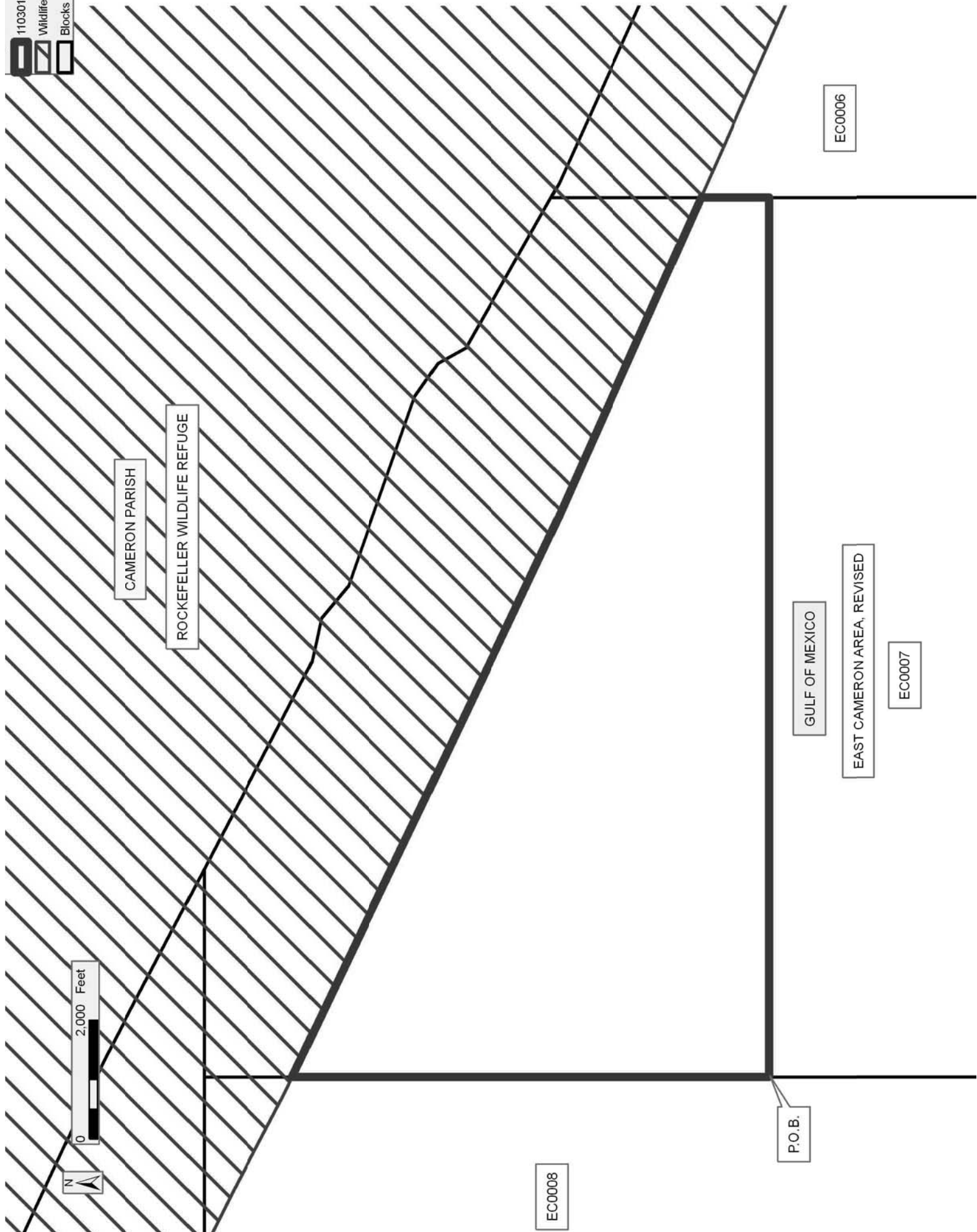
NOTE: The above description of the Tract nominated for lease has been provided and corrected, where required, exclusively by the nomination party. Any mineral lease selected from this Tract and awarded by the Louisiana State Mineral and Energy Board shall be without warranty of any kind, either express, implied, or statutory, including, but not limited to, the implied warranties of merchantability and fitness for a particular purpose. Should the mineral lease awarded by the Louisiana State Mineral and Energy Board be subsequently modified, cancelled or abrogated due to the existence of conflicting leases, operating agreements, private claims or other future obligations or conditions which may affect all or any portion of the leased Tract, it shall not relieve the Lessee of the obligation to pay any bonus due thereon to the Louisiana State Mineral and Energy Board, nor shall the Louisiana State Mineral and Energy Board be obligated to refund any consideration paid by the Lessor prior to such modification, cancellation, or abrogation, including, but not limited to, bonuses, rentals and royalties.

NOTE: The State of Louisiana does hereby reserve, and this lease shall be subject to, the imprescriptible right of surface use in the nature of a servitude in favor of the Department of Natural Resources, including its Offices and Commissions, for the sole purpose of implementing, constructing, servicing and maintaining approved coastal zone management and/or restoration projects. Utilization of any and all rights derived under this lease by the mineral lessee, its agents, successors or assigns, shall not interfere with nor hinder the reasonable surface use by the

Department of Natural Resources, its Offices or Commissions, as herein above reserved.

Applicant: THEOPHILUS OIL, GAS & LAND SERVICES, LLC

Bidder	Cash Payment	Price/Acre	Rental	Oil	Gas	Other



TRACT 41886 - Portion of Block 8, East Cameron Area, Revised, Cameron Parish, Louisiana

The beds and bottoms of all water bodies belonging to the State of Louisiana located in Block 8, East Cameron Area, Revised, together with any present lands formed by accretion to the shoreline or islands formed therein, located in Cameron Parish, Louisiana, owned by and not presently under mineral lease as of March 9, 2011, from the State of Louisiana, the geographical area of which is more fully described as follows: Beginning at a point on the West line of Block 8, East Cameron Area, Revised having Coordinates of X = 1,509,516.10 and Y = 352,620.98; thence East 14,758.04 feet to a point on the East line of said Block 8 having Coordinates of X = 1,524,274.14 and Y = 352,620.98; thence South 7,379.03 feet along the East line of said Block 8 to its Southeast corner having Coordinates of X = 1,524,274.14 and Y = 345,241.95; thence West 7,659.75 feet along the South line of said Block 8 to a point on the Three Mile Line, as decreed by the Supreme Court of the United States, as determined by a Special Master appointed therein, in litigation styled *United States v. State of Louisiana et al No. 9 Original*, in 1975, having Coordinates of X = 1,516,614.39 and Y = 345,241.95; thence Northwesterly on a straight line to a point having Coordinates of X = 1,516,478 and Y = 345,313; thence Northwesterly on a straight line to a point on the West line of said Block 8 having Coordinates of X = 1,509,516.10 and Y = 348,559.04; thence North 4,061.94 feet along the West line of said Block 8 to the point of beginning, containing approximately **2,229.14 acres, LESS AND EXCEPT** that portion thereof, if any, lying seaward of the line three nautical miles from the coast line of Louisiana, as said three mile line has been decreed by the Supreme Court of the United States, as determined by a Special Master appointed therein, in litigation styled **United States v. State of Louisiana et al No. 9 Original**, in 1975, all as more particularly outlined on a plat in the Office of Mineral Resources, Department of Natural Resources. All bearings, distances and coordinates are based on the Louisiana Coordinate System of 1927, (South Zone).

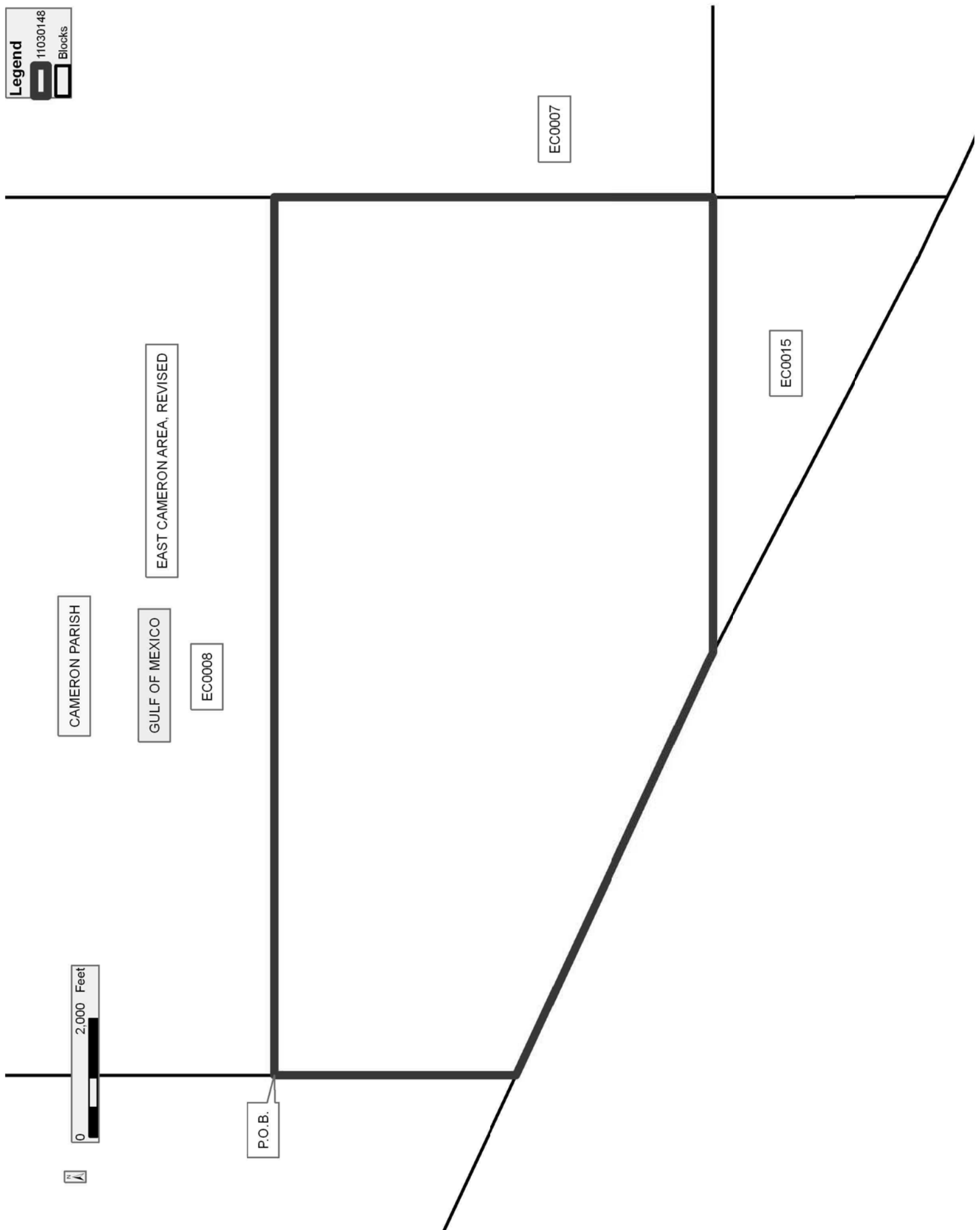
NOTE: The above description of the Tract nominated for lease has been provided and corrected, where required, exclusively by the nomination party. Any mineral lease selected from this Tract and awarded by the Louisiana State Mineral and Energy Board shall be without warranty of any kind, either express, implied, or statutory, including, but not limited to, the implied warranties of merchantability and fitness for a particular purpose. Should the mineral lease awarded by the Louisiana State Mineral and Energy Board be subsequently modified, cancelled or abrogated due to the existence of conflicting leases, operating agreements, private claims or other future obligations or conditions which may affect all or any portion of the leased Tract, it shall not relieve the Lessee of the obligation to pay any bonus due thereon to the Louisiana State Mineral and Energy Board, nor shall the Louisiana State Mineral and Energy Board be obligated to refund any consideration paid by the Lessor prior to such modification, cancellation, or abrogation, including, but not limited to, bonuses, rentals and royalties.

NOTE: The State of Louisiana does hereby reserve, and this lease shall be subject to, the imprescriptible right of surface use in the nature of a servitude in favor of the Department of Natural Resources, including its Offices and Commissions, for the sole purpose of implementing, constructing, servicing and maintaining approved coastal zone management and/or restoration projects. Utilization of any and all rights derived under this lease by the mineral lessee, its agents, successors or assigns, shall not interfere with nor hinder the reasonable surface use by the Department of Natural Resources, its Offices or Commissions, as herein above reserved.

Applicant: THEOPHILUS OIL, GAS & LAND SERVICES, LLC

Bidder	Cash Payment	Price/Acre	Rental	Oil	Gas	Other

Legend
11030148
Blocks



TRACT 41887 - Portion of Block 6, East Cameron Area, Revised, Cameron Parish, Louisiana

The beds and bottoms of all water bodies belonging to the State of Louisiana located in Block 6, East Cameron Area, Revised, together with any present lands formed by accretion to the shoreline or islands formed therein, located in Cameron Parish, Louisiana, owned by and not presently under mineral lease as of March 9, 2011, from the State of Louisiana, the geographical area of which is more fully described as follows: Beginning at the Southwest corner of Block 6, East Cameron Area, Revised, having Coordinates of X = 1,539,032.19 and Y = 345,241.95; thence North approximately 6,410 feet along the West line of said Block 6 to a point on South boundary of the Rockefeller Wildlife Refuge having a Coordinate of X = 1,539,032.19; thence Southeasterly along the meanders of said South boundary to a point on the East line of said Block 6 having a Coordinate of X = 1,553,790.24; thence South approximately 151 feet along the East line of said Block 6 to its Southeast corner having Coordinates of X = 1,553,790.24 and Y = 345,241.95; thence West 14,758.05 feet along the South line of said Block 6 to the point of beginning, **LESS AND EXCEPT** that portion, if any, of the above described tract which may lie within the boundary of the Rockefeller Wildlife Refuge; the above described tract containing approximately **1,101 acres**, all as more particularly outlined on a plat on file in the Office of Mineral Resources, Department of Natural Resources. All bearings, distances and coordinates are based on Louisiana Coordinate System of 1927, (North or South Zone).

NOTE: The above description of the Tract nominated for lease has been provided and corrected, where required, exclusively by the nomination party. Any mineral lease selected from this Tract and awarded by the Louisiana State Mineral and Energy Board shall be without warranty of any kind, either express, implied, or statutory, including, but not limited to, the implied warranties of merchantability and fitness for a particular purpose. Should the mineral lease awarded by the Louisiana State Mineral and Energy Board be subsequently modified, cancelled or abrogated due to the existence of conflicting leases, operating agreements, private claims or other future obligations or conditions which may affect all or any portion of the leased Tract, it shall not relieve the Lessee of the obligation to pay any bonus due thereon to the Louisiana State Mineral and Energy Board, nor shall the Louisiana State Mineral and Energy Board be obligated to refund any consideration paid by the Lessor prior to such modification, cancellation, or abrogation, including, but not limited to, bonuses, rentals and royalties.

NOTE: The State of Louisiana does hereby reserve, and this lease shall be subject to, the imprescriptible right of surface use in the nature of a servitude in favor of the Department of Natural Resources, including its Offices and Commissions, for the sole purpose of implementing, constructing, servicing and maintaining approved coastal zone management and/or restoration projects. Utilization of any and all rights derived under this lease by the mineral lessee, its agents, successors or assigns,

shall not interfere with nor hinder the reasonable surface use by the Department of Natural Resources, its Offices or Commissions, as herein above reserved.

Applicant: THEOPHILUS OIL, GAS & LAND SERVICES, LLC

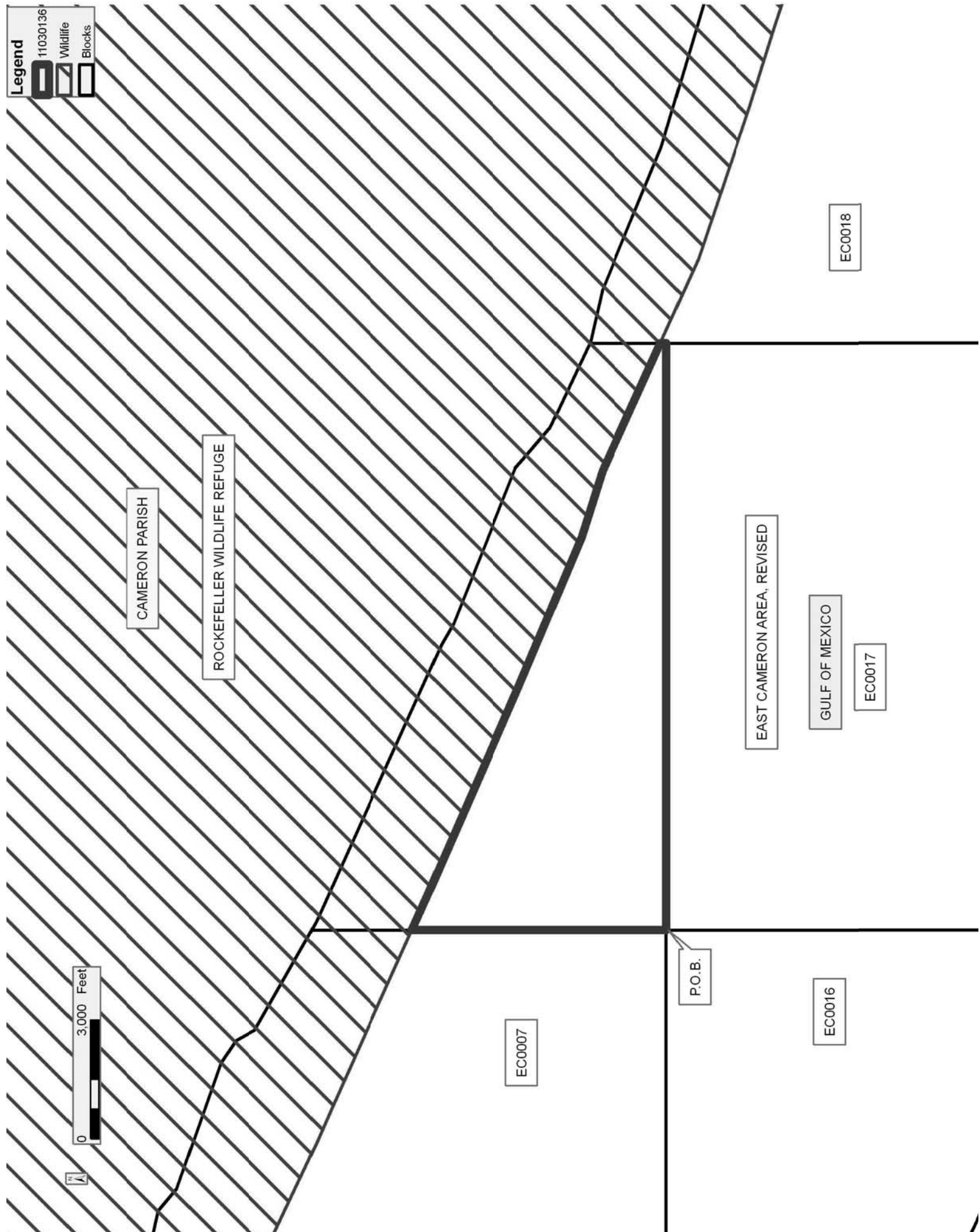
Bidder	Cash Payment	Price/Acre	Rental	Oil	Gas	Other

Legend

11030136

Wildlife

Blocks



TRACT 41888 - Portion of Block 7, East Cameron Area, Revised, Cameron Parish, Louisiana

The beds and bottoms of all water bodies belonging to the State of Louisiana located in Block 7, East Cameron Area, Revised, together with any present lands formed by accretion to the shoreline or islands formed therein, located in Cameron Parish, Louisiana, owned by and not presently under mineral lease as of March 9, 2011, from the State of Louisiana, the geographical area of which is more fully described as follows: Beginning at a point on the West line of Block 7, East Cameron Area, Revised having Coordinates of X = 1,524,274.14 and Y = 350,504.17; thence East 14,758.05 feet to a point on the East line of said Block 7 having Coordinates of X = 1,539,032.19 and Y = 350,504.17; thence South 5,262.22 feet along the East line of said Block 7 to its Southeast corner having Coordinates of X = 1,539,032.19 and Y 345,241.95; thence West 6,286.19 feet along the South line of said Block 7 to a point on the East boundary of State Lease No. 19888 having Coordinates of X = 1,532,746.00 and Y = 345,241.95; thence along the East, North and West boundaries of said State Lease No. 19888 the following courses and distances: North 2,009.05 feet to a corner having Coordinates of X = 1,532,746.00 and Y = 347,251.00, West 2,943.00 feet to a corner having Coordinates of X = 1,529,803.00 and Y = 347,251.00 and South 2,009.05 feet to a point on the South line of said Block 7 having Coordinates of X = 1,529,803.00 and Y = 345,241.95; thence West 5,528.86 feet along the South line of said Block 7 to its Southwest corner having Coordinates of X = 1,524,274.14 and Y = 345,241.95; thence North 5,262.22 feet along the West line of said Block 7 to the point of beginning, containing approximately **1,647.10 acres**, all as more particularly outlined on a plat on file in the Office of Mineral Resources, Department of Natural Resources. All bearings, distances and coordinates are based on Louisiana Coordinate System of 1927, (North or South Zone).

NOTE: The above description of the Tract nominated for lease has been provided and corrected, where required, exclusively by the nomination party. Any mineral lease selected from this Tract and awarded by the Louisiana State Mineral and Energy Board shall be without warranty of any kind, either express, implied, or statutory, including, but not limited to, the implied warranties of merchantability and fitness for a particular purpose. Should the mineral lease awarded by the Louisiana State Mineral and Energy Board be subsequently modified, cancelled or abrogated due to the existence of conflicting leases, operating agreements, private claims or other future obligations or conditions which may affect all or any portion of the leased Tract, it shall not relieve the Lessee of the obligation to pay any bonus due thereon to the Louisiana State Mineral and Energy Board, nor shall the Louisiana State Mineral and Energy Board be obligated to refund any consideration paid by the Lessor prior to such modification, cancellation, or abrogation, including, but not limited to, bonuses, rentals and royalties.

NOTE: The State of Louisiana does hereby reserve, and this lease shall be subject to, the imprescriptible right of surface use in the nature of a servitude in favor of the Department of Natural Resources, including its Offices and Commissions, for the sole purpose of implementing, constructing, servicing and maintaining approved coastal zone management and/or restoration projects. Utilization of any and all rights derived under this lease by the mineral lessee, its agents, successors or assigns, shall not interfere with nor hinder the reasonable surface use by the Department of Natural Resources, its Offices or Commissions, as herein above reserved.

Applicant: THEOPHILUS OIL, GAS & LAND SERVICES, LLC

Bidder	Cash Payment	Price/Acre	Rental	Oil	Gas	Other

Legend

-  11030150
-  Blocks
-  Active_Leases

CAMERON PARISH

EC0007

GULF OF MEXICO

EC0016

SL 19888

EAST CAMERON AREA, REVISED

P.O.B.



TRACT 41889 - Portion of Block 15, East Cameron Area, Revised, Cameron Parish, Louisiana

The beds and bottoms of all water bodies belonging to the State of Louisiana located in Block 15, East Cameron Area, Revised, together with any present lands formed by accretion to the shoreline or islands formed therein, located in Cameron Parish, Louisiana, owned by and not presently under mineral lease as of March 9, 2011, from the State of Louisiana, the geographical area of which is more fully described as follows: Beginning at the Northeast corner of Block 15, East Cameron Area, Revised having Coordinates of X = 1,524,274.14 and Y = 345,241.95; thence South 3,939.54 feet along the East line of said Block 15 to a point on the Three Mile Line, as decreed by the Supreme Court of the United States, as determined by a Special Master appointed therein, in litigation styled *United States v. State of Louisiana et al No. 9 Original*, in 1975, having Coordinates of X = 1,524,274.14 and Y = 341,302.42; thence Northwesterly along an arc having a radius of 18,240.60 feet and a center located at X = 1,532,515 and Y = 357,575 to a point having Coordinates of X = 1,523,959 and Y = 341,466; thence Northwesterly along an arc having a radius of 18,240.60 feet and a center located at X = 1,531,240 and Y = 358,190 to a point having Coordinates of X = 1,522,813 and Y = 342,013; thence Northwesterly along a straight line to a point on the North line of said Block 15 having Coordinates of X = 1,516,614.39 and Y = 345,241.95; thence East 7,659.75 feet along the North line of said Block 15 to the point of beginning, containing approximately **350.01 acres, LESS AND EXCEPT** that portion thereof, if any, lying seaward of the line three nautical miles from the coast line of Louisiana, as said three mile line has been decreed by the Supreme Court of the United States, as determined by a Special Master appointed therein, in litigation styled **United States v. State of Louisiana et al No. 9 Original**, in 1975, all as more particularly outlined on a plat in the Office of Mineral Resources, Department of Natural Resources. All bearings, distances and coordinates are based on the Louisiana Coordinate System of 1927, (South Zone).

NOTE: The above description of the Tract nominated for lease has been provided and corrected, where required, exclusively by the nomination party. Any mineral lease selected from this Tract and awarded by the Louisiana State Mineral and Energy Board shall be without warranty of any kind, either express, implied, or statutory, including, but not limited to, the implied warranties of merchantability and fitness for a particular purpose. Should the mineral lease awarded by the Louisiana State Mineral and Energy Board be subsequently modified, cancelled or abrogated due to the existence of conflicting leases, operating agreements, private claims or other future obligations or conditions which may affect all or any portion of the leased Tract, it shall not relieve the Lessee of the obligation to pay any bonus due thereon to the Louisiana State Mineral and Energy Board, nor shall the Louisiana State Mineral and Energy Board be obligated to refund any consideration paid by the Lessor prior to such modification, cancellation, or abrogation, including, but not limited to, bonuses, rentals and royalties.

NOTE: The State of Louisiana does hereby reserve, and this lease shall be subject to, the imprescriptible right of surface use in the nature of a servitude in favor of the Department of Natural Resources, including its Offices and Commissions, for the sole purpose of implementing, constructing, servicing and maintaining approved coastal zone management and/or restoration projects. Utilization of any and all rights derived under this lease by the mineral lessee, its agents, successors or assigns, shall not interfere with nor hinder the reasonable surface use by the Department of Natural Resources, its Offices or Commissions, as herein above reserved.

Applicant: THEOPHILUS OIL, GAS & LAND SERVICES, LLC

Bidder	Cash Payment	Price/Acre	Rental	Oil	Gas	Other

Legend
11030149
Blocks

