

**TRACT 41870 - Portion of Block 25, West Cameron Area, Revised, Cameron Parish, Louisiana**

The beds and bottoms of all water bodies belonging to the State of Louisiana located in Block 25, West Cameron Area, Revised, together with any present lands formed by accretion to the shoreline or islands formed therein, located in Cameron Parish, Louisiana, owned by and not presently under mineral lease as of March 9, 2011, from the State of Louisiana, the geographical area of which is more fully described as follows: Beginning at a point on the West line of Block 25, West Cameron Area, Revised, said point also located on the Three Mile Line, as decreed by the Supreme Court of the United States, as determined by a Special Master appointed therein, in litigation styled *United States v. State of Louisiana et al No. 9 Original*, in 1975, having Coordinates of X = 1,347,177.57 and Y = 386,766.95; thence East 14,758.05 feet to a point on the West line of said Block 25 having Coordinates of X = 1,361,935.62 and Y = 386,766.95; thence South 7,179.63 feet along the East line of said Block 25 to a point on the said Three Mile Line having Coordinates of X = 1,361,935.62 and Y = 379,587.32; thence Northwesterly along an arc having a radius of 18,240.60 feet and a center located at X = 1,362,416 and Y = 397,822 to a point having Coordinates of X = 1,348,021 and Y = 386,619; thence Northwesterly on a straight line to a point having Coordinates of X = 1,347,740 and Y = 386,685; thence Northwesterly on a straight line to the point of beginning, containing approximately **1,593.25 acres, LESS AND EXCEPT** that portion thereof, if any, lying seaward of the line three nautical miles from the coast line of Louisiana, as said three mile line has been decreed by the Supreme Court of the United States, as determined by a Special Master appointed therein, in litigation styled **United States v. State of Louisiana et al No. 9 Original**, in 1975, all as more particularly outlined on a plat in the Office of Mineral Resources, Department of Natural Resources. All bearings, distances and coordinates are based on the Louisiana Coordinate System of 1927, (South Zone).

NOTE: The above description of the Tract nominated for lease has been provided and corrected, where required, exclusively by the nomination party. Any mineral lease selected from this Tract and awarded by the Louisiana State Mineral and Energy Board shall be without warranty of any kind, either express, implied, or statutory, including, but not limited to, the implied warranties of merchantability and fitness for a particular purpose. Should the mineral lease awarded by the Louisiana State Mineral and Energy Board be subsequently modified, cancelled or abrogated due to the existence of conflicting leases, operating agreements, private claims or other future obligations or conditions which may affect all or any portion of the leased Tract, it shall not relieve the Lessee of the obligation to pay any bonus due thereon to the Louisiana State Mineral and Energy Board, nor shall the Louisiana State Mineral and Energy Board be obligated to refund any consideration paid by the Lessor prior to such modification, cancellation, or abrogation, including, but not limited to, bonuses, rentals and royalties.

NOTE: The State of Louisiana does hereby reserve, and this lease shall be subject to, the imprescriptible right of surface use in the nature of a servitude in favor of the Department of Natural Resources, including its Offices and Commissions, for the sole purpose of implementing, constructing, servicing and maintaining approved coastal zone management and/or restoration projects. Utilization of any and all rights derived under this lease by the mineral lessee, its agents, successors or assigns, shall not interfere with nor hinder the reasonable surface use by the Department of Natural Resources, its Offices or Commissions, as herein above reserved.

NOTE: It appears, according to our records, that a portion of this Tract is located within the restrictive safety fairway area as set out by the Corps of Engineers, U.S. Army and/or the restrictive anchorage area as set out by the U.S. Coast Guard.

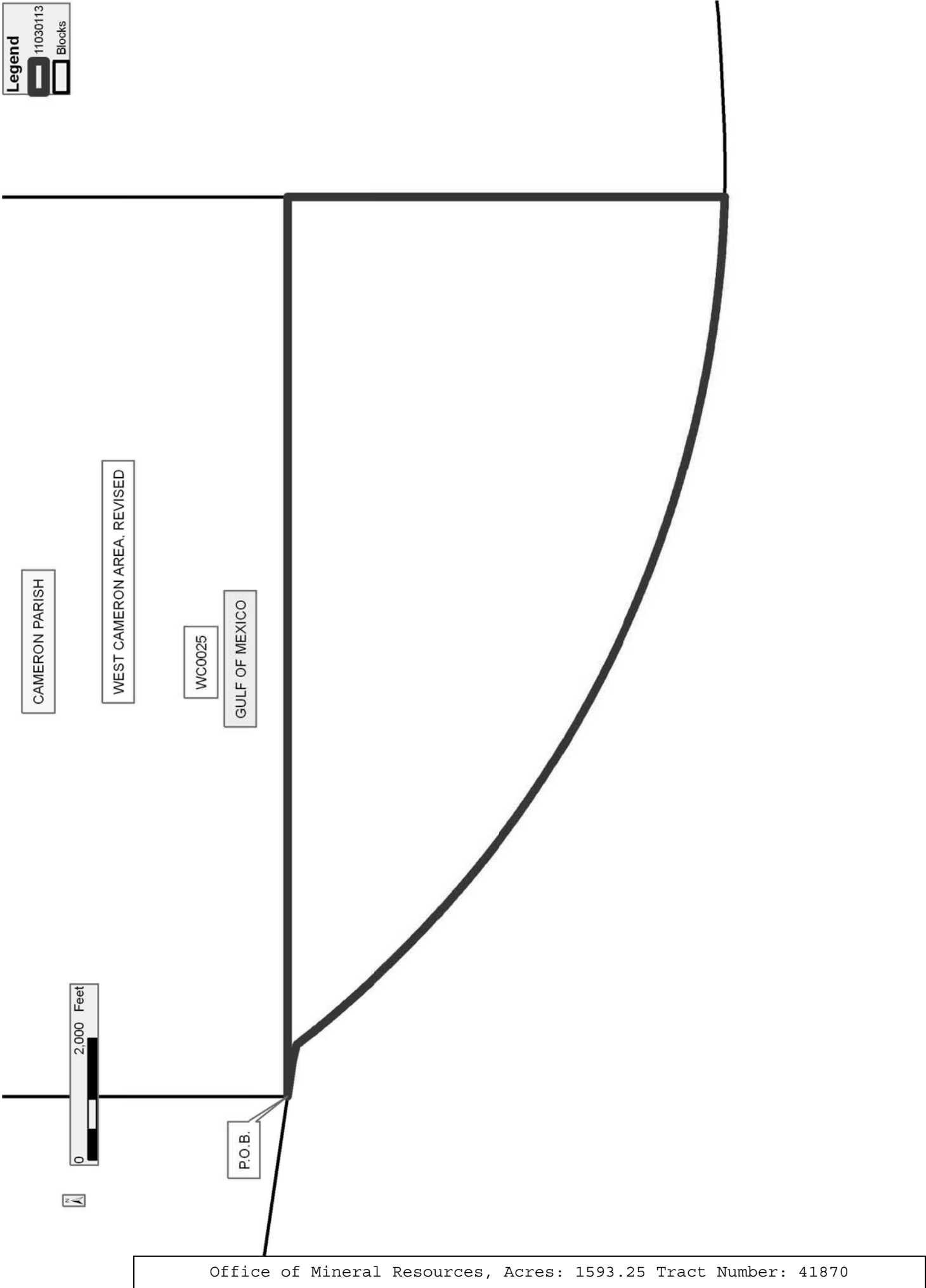
Applicant: THEOPHILUS OIL, GAS & LAND SERVICES, LLC

| Bidder | Cash<br>Payment | Price/<br>Acre | Rental | Oil | Gas | Other |
|--------|-----------------|----------------|--------|-----|-----|-------|
|        |                 |                |        |     |     |       |
|        |                 |                |        |     |     |       |
|        |                 |                |        |     |     |       |
|        |                 |                |        |     |     |       |

Legend

11030113

Blocks



**TRACT 41871 - Portion of Block 26, West Cameron Area, Revised, Cameron Parish, Louisiana**

The beds and bottoms of all water bodies belonging to the State of Louisiana located in Block 26, West Cameron Area, Revised, together with any present lands formed by accretion to the shoreline or islands formed therein, located in Cameron Parish, Louisiana, owned by and not presently under mineral lease as of March 9, 2011, from the State of Louisiana, the geographical area of which is more fully described as follows: Beginning at a point on the West line of Block 26, West Cameron Area, Revised having Coordinates of X = 1,361,935.62 and Y = 386,766.95; thence East 14,758.04 feet to a point on the East line of said Block 26 having Coordinates of X = 1,376,693.66 and Y = 386,766.95; thence South 1,378.61 feet to a point on the Three Mile Line, as decreed by the Supreme Court of the United States, as determined by a Special Master appointed therein, in litigation styled *United States v. State of Louisiana et al No. 9 Original*, in 1975, having Coordinates of X = 1,376,693.66 and Y = 385,388.34; thence along an arc having a radius of 18,240.60 feet and a center located at X = 1,363,392 and Y = 397,870 to a point having Coordinates of X = 1,364,288 and Y = 379,651; thence Westerly along a straight line to a point having Coordinates of X = 1,363,312 and Y = 379,603; thence along an arc having a radius of 18,240.60 feet and a center located at X = 1,362,416 and Y = 397,822 to a point on the West line of said Block 26 having Coordinates of X = 1,361,935.62 and Y = 379,587.32; thence North 7,179.63 feet along the West line of said Block 26 to the point of beginning, containing approximately **1,876.48 acres, LESS AND EXCEPT** that portion thereof, if any, lying seaward of the line three nautical miles from the coast line of Louisiana, as said three mile line has been decreed by the Supreme Court of the United States, as determined by a Special Master appointed therein, in litigation styled **United States v. State of Louisiana et al No. 9 Original**, in 1975, all as more particularly outlined on a plat in the Office of Mineral Resources, Department of Natural Resources. All bearings, distances and coordinates are based on the Louisiana Coordinate System of 1927, (South Zone).

NOTE: The above description of the Tract nominated for lease has been provided and corrected, where required, exclusively by the nomination party. Any mineral lease selected from this Tract and awarded by the Louisiana State Mineral and Energy Board shall be without warranty of any kind, either express, implied, or statutory, including, but not limited to, the implied warranties of merchantability and fitness for a particular purpose. Should the mineral lease awarded by the Louisiana State Mineral and Energy Board be subsequently modified, cancelled or abrogated due to the existence of conflicting leases, operating agreements, private claims or other future obligations or conditions which may affect all or any portion of the leased Tract, it shall not relieve the Lessee of the obligation to pay any bonus due thereon to the Louisiana State Mineral and Energy Board, nor shall the Louisiana State Mineral and Energy Board be obligated to refund any consideration paid by the Lessor prior to such

modification, cancellation, or abrogation, including, but not limited to, bonuses, rentals and royalties.

NOTE: The State of Louisiana does hereby reserve, and this lease shall be subject to, the imprescriptible right of surface use in the nature of a servitude in favor of the Department of Natural Resources, including its Offices and Commissions, for the sole purpose of implementing, constructing, servicing and maintaining approved coastal zone management and/or restoration projects. Utilization of any and all rights derived under this lease by the mineral lessee, its agents, successors or assigns, shall not interfere with nor hinder the reasonable surface use by the Department of Natural Resources, its Offices or Commissions, as herein above reserved.

NOTE: It appears, according to our records, that a portion of this Tract is located within the restrictive safety fairway area as set out by the Corps of Engineers, U.S. Army and/or the restrictive anchorage area as set out by the U.S. Coast Guard.

Applicant: THEOPHILUS OIL, GAS & LAND SERVICES, LLC

| Bidder | Cash<br>Payment | Price/<br>Acre | Rental | Oil | Gas | Other |
|--------|-----------------|----------------|--------|-----|-----|-------|
|        |                 |                |        |     |     |       |
|        |                 |                |        |     |     |       |
|        |                 |                |        |     |     |       |
|        |                 |                |        |     |     |       |



**TRACT 41872 - Portion of Block 8, Main Pass Area, Revised, Plaquemines and St. Bernard Parishes, Louisiana**

The beds and bottoms of all water bodies belonging to the State of Louisiana located in Block 8, Main Pass Area, Revised, together with any present lands formed by accretion to the shoreline or islands formed therein, located in Plaquemines and St. Bernard Parishes, Louisiana, owned by and not presently under mineral lease as of March 9, 2011, from the State of Louisiana, the geographical area of which is more fully described as follows: Beginning at a point on having Coordinates of X = 2,768,100.01 and Y = 359,205.00; thence West 14,750.05 feet to a point having Coordinates of X = 2,753,349.96 and Y = 359,205.00; thence North 00 degrees 00 minutes 02 seconds West 2,641.83 feet to a point on the Coastline as defined by the report of the Special Master and set forth in the judgment decree in June of 1975 by the Supreme Court of the United States in the litigation styled United States v. State of Louisiana, et al No. 9 Original, having Coordinates of X = 2,753,349.94 and Y = 361,846.85; thence along the Coastline the following courses: Northeasterly on a straight line to a point having Coordinates of X = 2,755,015 and Y = 363,480, Northeasterly on a straight line to a point having Coordinates of X = 2,755,451 and Y = 364,182, Northeasterly on a straight line to a point having Coordinates of X = 2,755,709 and Y = 364,596 and Northeasterly on a straight line to a point having Coordinates of X = 2,757,292.58 and Y = 366,579.99; thence East 10,807.42 feet to a point having Coordinates of X = 2,768,100.01 and Y = 366,579.99; thence South 7,374.99 feet to the point of beginning, estimated to contain **2,271.01 acres**, all as more particularly outlined on a plat on file in the Office of Mineral Resources, Department of Natural Resources. All bearings, distances and coordinates are based on Louisiana Coordinate System of 1927, (North or South Zone).

NOTE: The above description of the Tract nominated for lease has been provided and corrected, where required, exclusively by the nomination party. Any mineral lease selected from this Tract and awarded by the Louisiana State Mineral and Energy Board shall be without warranty of any kind, either express, implied, or statutory, including, but not limited to, the implied warranties of merchantability and fitness for a particular purpose. Should the mineral lease awarded by the Louisiana State Mineral and Energy Board be subsequently modified, cancelled or abrogated due to the existence of conflicting leases, operating agreements, private claims or other future obligations or conditions which may affect all or any portion of the leased Tract, it shall not relieve the Lessee of the obligation to pay any bonus due thereon to the Louisiana State Mineral and Energy Board, nor shall the Louisiana State Mineral and Energy Board be obligated to refund any consideration paid by the Lessor prior to such modification, cancellation, or abrogation, including, but not limited to, bonuses, rentals and royalties.

NOTE: The State of Louisiana does hereby reserve, and this lease shall be subject to, the imprescriptible right of surface use in the nature of a

servitude in favor of the Department of Natural Resources, including its Offices and Commissions, for the sole purpose of implementing, constructing, servicing and maintaining approved coastal zone management and/or restoration projects. Utilization of any and all rights derived under this lease by the mineral lessee, its agents, successors or assigns, shall not interfere with nor hinder the reasonable surface use by the Department of Natural Resources, its Offices or Commissions, as herein above reserved.

Applicant: CYPRESS ENERGY CORPORATION

| Bidder | Cash<br>Payment | Price/<br>Acre | Rental | Oil | Gas | Other |
|--------|-----------------|----------------|--------|-----|-----|-------|
|        |                 |                |        |     |     |       |
|        |                 |                |        |     |     |       |
|        |                 |                |        |     |     |       |
|        |                 |                |        |     |     |       |

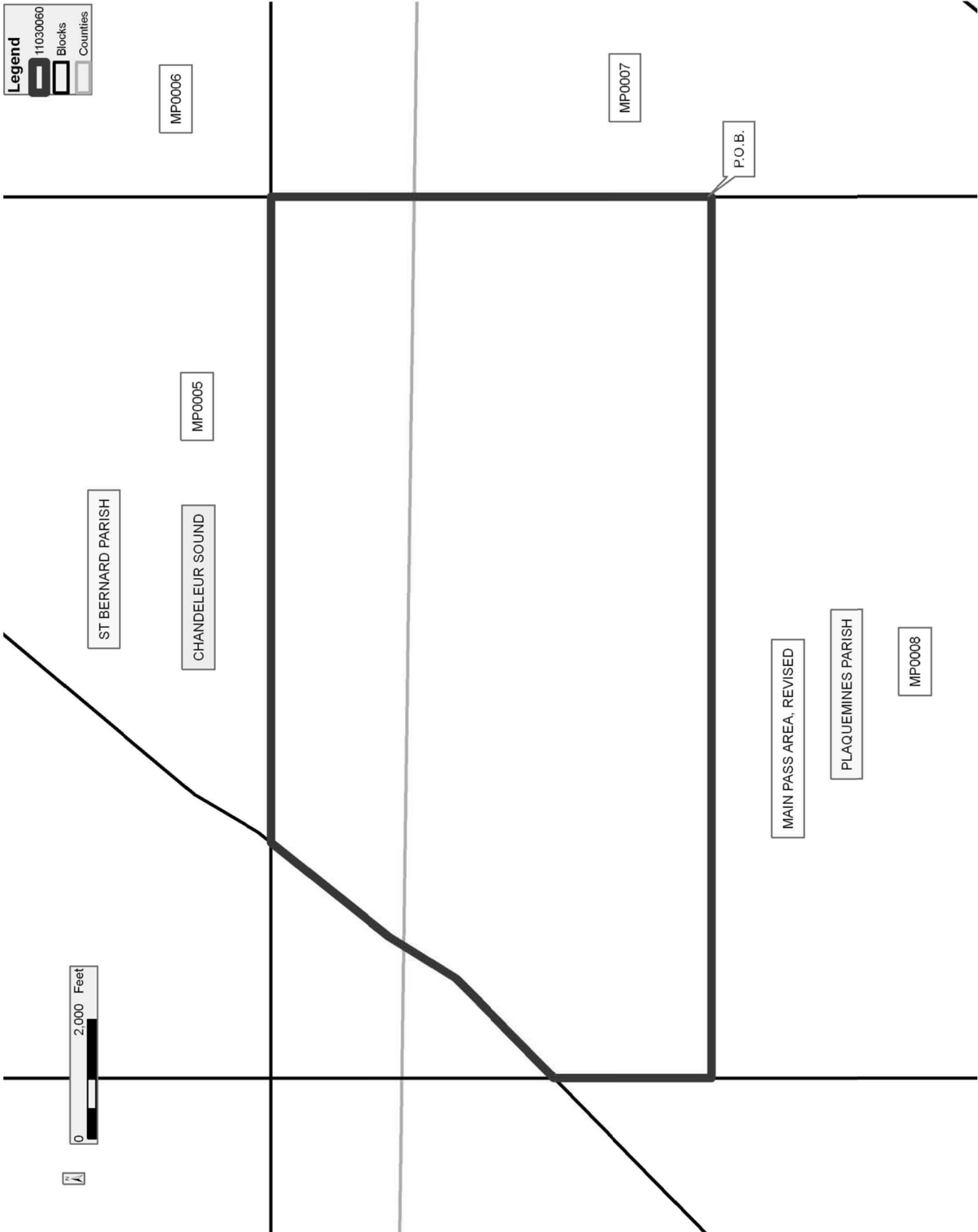


**Legend**

11030060

Blocks

Counties



**TRACT 41873 - Portion of Blocks 1, and 3, East Cameron Area, Revised, Cameron Parish, Louisiana**

The beds and bottoms of all water bodies belonging to the State of Louisiana located in Blocks 1, and 3, East Cameron Area, Revised, together with any present lands formed by accretion to the shoreline or islands formed therein, located in Cameron Parish, Louisiana, owned by and not presently under mineral lease as of March 9, 2011, from the State of Louisiana, the geographical area of which is more fully described as follows: Beginning at the Westernmost Northwest corner of Block 3, East Cameron Area, Revised, said point located on the South boundary of State Lease No. 1170, as amended, having Coordinates of X = 1,480,000.00 and Y = 374,758.05; thence along boundary of said State Lease No. 1170 the following courses: thence East 3,364.65 feet to its Southeast corner having Coordinates of X = 1,483,364.65 and Y = 374,758.05; North 33 degrees 11 minutes 15 seconds East 901.66 feet to a corner lying within Block 1, East Cameron Area, Revised, having Coordinates of X = 1,483,858.20 and Y = 375,512.63; North 26 degrees 10 minutes 30 seconds East 1,007.15 feet to a corner having Coordinates of X = 1,484,302.47 and Y = 376,416.50; North 17 degrees 54 minutes 22 seconds East 1,283.10 feet to a corner having Coordinates of X = 1,484,696.97 and Y = 377,637.45; North 2,058.78 feet to a corner having Coordinates of X = 1,484,696.97 and Y = 379,696.23; West 452.17 feet to a corner having Coordinates of X = 1,484,244.80 and Y = 379,696.23 and North 2,261.72 feet to a point on the Louisiana Coastline, as decreed by the Supreme Court of the United States, as determined by a Special Master appointed therein, in litigation styled *United States v. State of Louisiana et al No. 9 Original*, in 1975, having Coordinates of X = 1,484,244.80 and Y = 381,957.95; thence along said Louisiana Coastline the following: Southeasterly on a straight line to a point having Coordinates of X = 1,489,725 and Y = 379,370; Southeasterly on a straight line to a point having Coordinates of X = 1,492,040 and Y = 378,110 and Southeasterly on a straight line to a point on the East line of said Block 3 having Coordinates of X = 1,493,033.33 and Y = 377,611.20; thence South approximately 1,537 feet to a point on the Northern boundary of the Rockefeller Wildlife Refuge having a Coordinate of X = 1,493,033.33; thence Westerly, Southerly and Southeasterly along the boundary of said Rockefeller Wildlife Refuge to a point of intersection with the East line of said Block 3 having a Coordinate of X = 1,493.033.33; thence South approximately 5,433 feet along the East line of said Block 3 to a point having Coordinates of X = 1,493,033.33 and Y = 369,788.74; thence West 13,033.33 feet to a point on the West line of said Block 3 having Coordinates of X = 1,480,000.00 and Y = 369,788.74; thence North 4,969.31 feet along the West line of said Block 3 to the point of beginning, **LESS AND EXCEPT** that portion, if any, of the above described tract which may lie within the boundary of the Rockefeller Wildlife Refuge; the above described tract containing approximately **2,485 acres**, all as more particularly outlined on a plat on file in the Office of Mineral Resources, Department of Natural Resources. All bearings, distances and coordinates are based on Louisiana Coordinate System of 1927, (North or South Zone).

NOTE: The above description of the Tract nominated for lease has been provided and corrected, where required, exclusively by the nomination party. Any mineral lease selected from this Tract and awarded by the Louisiana State Mineral and Energy Board shall be without warranty of any kind, either express, implied, or statutory, including, but not limited to, the implied warranties of merchantability and fitness for a particular purpose. Should the mineral lease awarded by the Louisiana State Mineral and Energy Board be subsequently modified, cancelled or abrogated due to the existence of conflicting leases, operating agreements, private claims or other future obligations or conditions which may affect all or any portion of the leased Tract, it shall not relieve the Lessee of the obligation to pay any bonus due thereon to the Louisiana State Mineral and Energy Board, nor shall the Louisiana State Mineral and Energy Board be obligated to refund any consideration paid by the Lessor prior to such modification, cancellation, or abrogation, including, but not limited to, bonuses, rentals and royalties.

NOTE: The State of Louisiana does hereby reserve, and this lease shall be subject to, the imprescriptible right of surface use in the nature of a servitude in favor of the Department of Natural Resources, including its Offices and Commissions, for the sole purpose of implementing, constructing, servicing and maintaining approved coastal zone management and/or restoration projects. Utilization of any and all rights derived under this lease by the mineral lessee, its agents, successors or assigns, shall not interfere with nor hinder the reasonable surface use by the Department of Natural Resources, its Offices or Commissions, as herein above reserved.

Applicant: THEOPHILUS OIL, GAS & LAND SERVICES, LLC

| Bidder | Cash<br>Payment | Price/<br>Acre | Rental | Oil | Gas | Other |
|--------|-----------------|----------------|--------|-----|-----|-------|
|        |                 |                |        |     |     |       |
|        |                 |                |        |     |     |       |
|        |                 |                |        |     |     |       |
|        |                 |                |        |     |     |       |



**TRACT 41874 - Portion of Block 9, Breton Sound Area, Plaquemines Parish, Louisiana**

The beds and bottoms of all water bodies belonging to the State of Louisiana located in Block 9, Breton Sound Area, together with any present lands formed by accretion to the shoreline or islands formed therein, located in Plaquemines Parish, Louisiana, owned by and not presently under mineral lease as of March 9, 2011, from the State of Louisiana, the geographical area of which is more fully described as follows: Beginning at a point on having Coordinates of X = 2,753,350.02 and Y = 351,830.01; thence West 12,230.10 feet to a point on the Coastline as defined by the report of the Special Master and set forth in the judgment decree in June of 1975 by the Supreme Court of the United States in the litigation styled United States v. State of Louisiana, et al No. 9 Original, having Coordinates of X = 2,741,119.92 and Y = 351,830.01; thence along the Coastline the following courses: Northeasterly on a straight line to a point having Coordinates of X = 2,742,583 and Y = 353,754, Northeasterly on a straight line to a point having Coordinates of X = 2,743,352 and Y = 353,794, Northeasterly on a straight line to a point having Coordinates of X = 2,744,222 and Y = 354,125, Northeasterly on a straight line to a point having Coordinates of X = 2,746,309 and Y = 355,438, Northeasterly on a straight line to a point having Coordinates of X = 2,749,221 and Y = 357,797 and Northeasterly on a straight line to a point having Coordinates of X = 2,753,349.94 and Y = 361,846.85; thence South 00 degrees 00 minutes 02 seconds East 10,016.84 feet to the point of beginning, estimated to contain **1,328.16 acres**, all as more particularly outlined on a plat on file in the Office of Mineral Resources, Department of Natural Resources. All bearings, distances and coordinates are based on Louisiana Coordinate System of 1927, (North or South Zone).

NOTE: The above description of the Tract nominated for lease has been provided and corrected, where required, exclusively by the nomination party. Any mineral lease selected from this Tract and awarded by the Louisiana State Mineral and Energy Board shall be without warranty of any kind, either express, implied, or statutory, including, but not limited to, the implied warranties of merchantability and fitness for a particular purpose. Should the mineral lease awarded by the Louisiana State Mineral and Energy Board be subsequently modified, cancelled or abrogated due to the existence of conflicting leases, operating agreements, private claims or other future obligations or conditions which may affect all or any portion of the leased Tract, it shall not relieve the Lessee of the obligation to pay any bonus due thereon to the Louisiana State Mineral and Energy Board, nor shall the Louisiana State Mineral and Energy Board be obligated to refund any consideration paid by the Lessor prior to such modification, cancellation, or abrogation, including, but not limited to, bonuses, rentals and royalties.

NOTE: The State of Louisiana does hereby reserve, and this lease shall be subject to, the imprescriptible right of surface use in the nature of a servitude in favor of the Department of Natural Resources, including its

Offices and Commissions, for the sole purpose of implementing, constructing, servicing and maintaining approved coastal zone management and/or restoration projects. Utilization of any and all rights derived under this lease by the mineral lessee, its agents, successors or assigns, shall not interfere with nor hinder the reasonable surface use by the Department of Natural Resources, its Offices or Commissions, as herein above reserved.

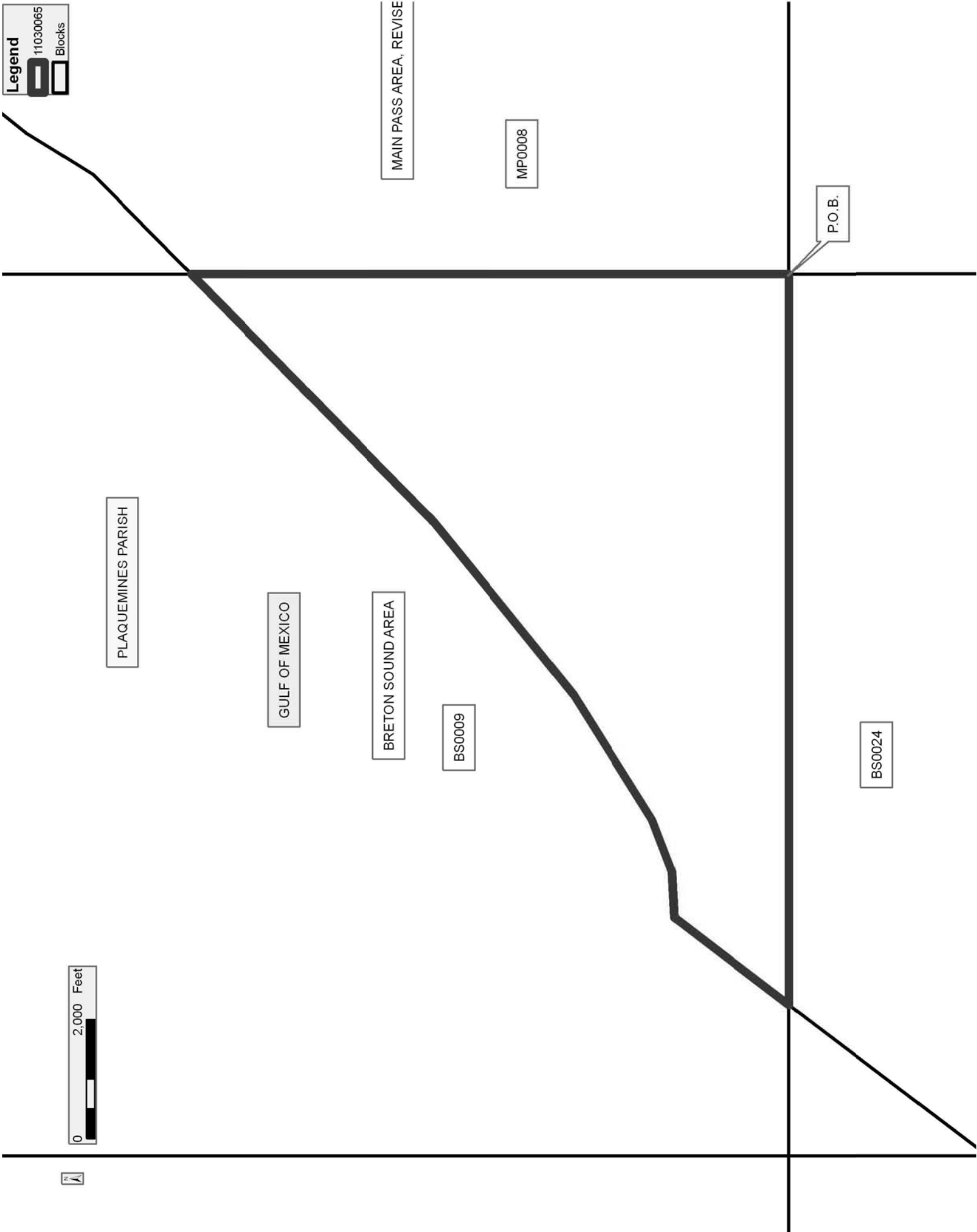
Applicant: CYPRESS ENERGY CORPORATION

| Bidder | Cash<br>Payment | Price/<br>Acre | Rental | Oil | Gas | Other |
|--------|-----------------|----------------|--------|-----|-----|-------|
|        |                 |                |        |     |     |       |
|        |                 |                |        |     |     |       |
|        |                 |                |        |     |     |       |
|        |                 |                |        |     |     |       |

Legend

11030065

Blocks



**TRACT 41875 - Portion of Block 4, East Cameron Area, Revised, Cameron Parish, Louisiana**

The beds and bottoms of all water bodies belonging to the State of Louisiana located in Block 4, East Cameron Area, Revised, together with any present lands formed by accretion to the shoreline or islands formed therein, located in Cameron Parish, Louisiana, owned by and not presently under mineral lease as of March 9, 2011, from the State of Louisiana, the geographical area of which is more fully described as follows: Beginning at a point on the Louisiana Coastline, as decreed by the Supreme Court of the United States, as determined by a Special Master appointed therein, in litigation styled *United States v. State of Louisiana et al No. 9 Original*, in 1975, having Coordinates of X = 1,493,033.33 and Y = 377,611.20, said point also located on the West line of Block 4, East Cameron Area, Revised; thence Southeasterly on a straight line along said Louisiana Coastline to a point of intersection with the Northern boundary of the Rockefeller Wildlife Refuge; thence Westerly along the Northern boundary of the said Rockefeller Wildlife Refuge to a point on the West line of said Block 4 having a Coordinate of X = 1,493,033.33; thence North approximately 1,537 feet along the West line of said Block 4 to the point of beginning, **LESS AND EXCEPT** that portion, if any, of the above described tract which may lie within the boundary of the Rockefeller Wildlife Refuge; the above described tract containing approximately **57 acres**, all as more particularly outlined on a plat on file in the Office of Mineral Resources, Department of Natural Resources. All bearings, distances and coordinates are based on Louisiana Coordinate System of 1927, (North or South Zone).

NOTE: The above description of the Tract nominated for lease has been provided and corrected, where required, exclusively by the nomination party. Any mineral lease selected from this Tract and awarded by the Louisiana State Mineral and Energy Board shall be without warranty of any kind, either express, implied, or statutory, including, but not limited to, the implied warranties of merchantability and fitness for a particular purpose. Should the mineral lease awarded by the Louisiana State Mineral and Energy Board be subsequently modified, cancelled or abrogated due to the existence of conflicting leases, operating agreements, private claims or other future obligations or conditions which may affect all or any portion of the leased Tract, it shall not relieve the Lessee of the obligation to pay any bonus due thereon to the Louisiana State Mineral and Energy Board, nor shall the Louisiana State Mineral and Energy Board be obligated to refund any consideration paid by the Lessor prior to such modification, cancellation, or abrogation, including, but not limited to, bonuses, rentals and royalties.

NOTE: The State of Louisiana does hereby reserve, and this lease shall be subject to, the imprescriptible right of surface use in the nature of a servitude in favor of the Department of Natural Resources, including its Offices and Commissions, for the sole purpose of implementing, constructing, servicing and maintaining approved coastal zone management



and/or restoration projects. Utilization of any and all rights derived under this lease by the mineral lessee, its agents, successors or assigns, shall not interfere with nor hinder the reasonable surface use by the Department of Natural Resources, its Offices or Commissions, as herein above reserved.

Applicant: THEOPHILUS OIL, GAS & LAND SERVICES, LLC

| Bidder | Cash<br>Payment | Price/<br>Acre | Rental | Oil | Gas | Other |
|--------|-----------------|----------------|--------|-----|-----|-------|
|        |                 |                |        |     |     |       |
|        |                 |                |        |     |     |       |
|        |                 |                |        |     |     |       |
|        |                 |                |        |     |     |       |



CAMERON PARISH

T15S - R5W

P.O.B.

ROCKEFELLER WILDLIFE REFUGE

EAST CAMERON AREA, REVISED

EC0004

GULF OF MEXICO

EC0003

EC0005

**TRACT 41876 - Portion of Block 8, Main Pass Area, Revised, Plaquemines Parish, Louisiana**

The beds and bottoms of all water bodies belonging to the State of Louisiana located in Block 8, Main Pass Area, Revised, together with any present lands formed by accretion to the shoreline or islands formed therein, located in Plaquemines Parish, Louisiana, owned by and not presently under mineral lease as of March 9, 2011, from the State of Louisiana, the geographical area of which is more fully described as follows: Beginning at a point on having Coordinates of X = 2,753,349.96 and Y = 359,205.00; thence East 14,750.05 feet to a point having Coordinates of X = 2,768,100.01 and Y = 359,205.00; thence South 7,375.01 feet to a point having Coordinates of X = 2,768,100.02 and Y = 351,829.99; thence West 14,750.00 feet to a point having Coordinates of X = 2,753,350.02 and Y = 351,830.01; thence North 00 degrees 00 minutes 02 seconds West 7,374.99 feet to the point of beginning, estimated to contain **2,497.27 acres**, all as more particularly outlined on a plat on file in the Office of Mineral Resources, Department of Natural Resources. All bearings, distances and coordinates are based on Louisiana Coordinate System of 1927, (North or South Zone).

NOTE: The above description of the Tract nominated for lease has been provided and corrected, where required, exclusively by the nomination party. Any mineral lease selected from this Tract and awarded by the Louisiana State Mineral and Energy Board shall be without warranty of any kind, either express, implied, or statutory, including, but not limited to, the implied warranties of merchantability and fitness for a particular purpose. Should the mineral lease awarded by the Louisiana State Mineral and Energy Board be subsequently modified, cancelled or abrogated due to the existence of conflicting leases, operating agreements, private claims or other future obligations or conditions which may affect all or any portion of the leased Tract, it shall not relieve the Lessee of the obligation to pay any bonus due thereon to the Louisiana State Mineral and Energy Board, nor shall the Louisiana State Mineral and Energy Board be obligated to refund any consideration paid by the Lessor prior to such modification, cancellation, or abrogation, including, but not limited to, bonuses, rentals and royalties.

NOTE: The State of Louisiana does hereby reserve, and this lease shall be subject to, the imprescriptible right of surface use in the nature of a servitude in favor of the Department of Natural Resources, including its Offices and Commissions, for the sole purpose of implementing, constructing, servicing and maintaining approved coastal zone management and/or restoration projects. Utilization of any and all rights derived under this lease by the mineral lessee, its agents, successors or assigns, shall not interfere with nor hinder the reasonable surface use by the Department of Natural Resources, its Offices or Commissions, as herein above reserved.

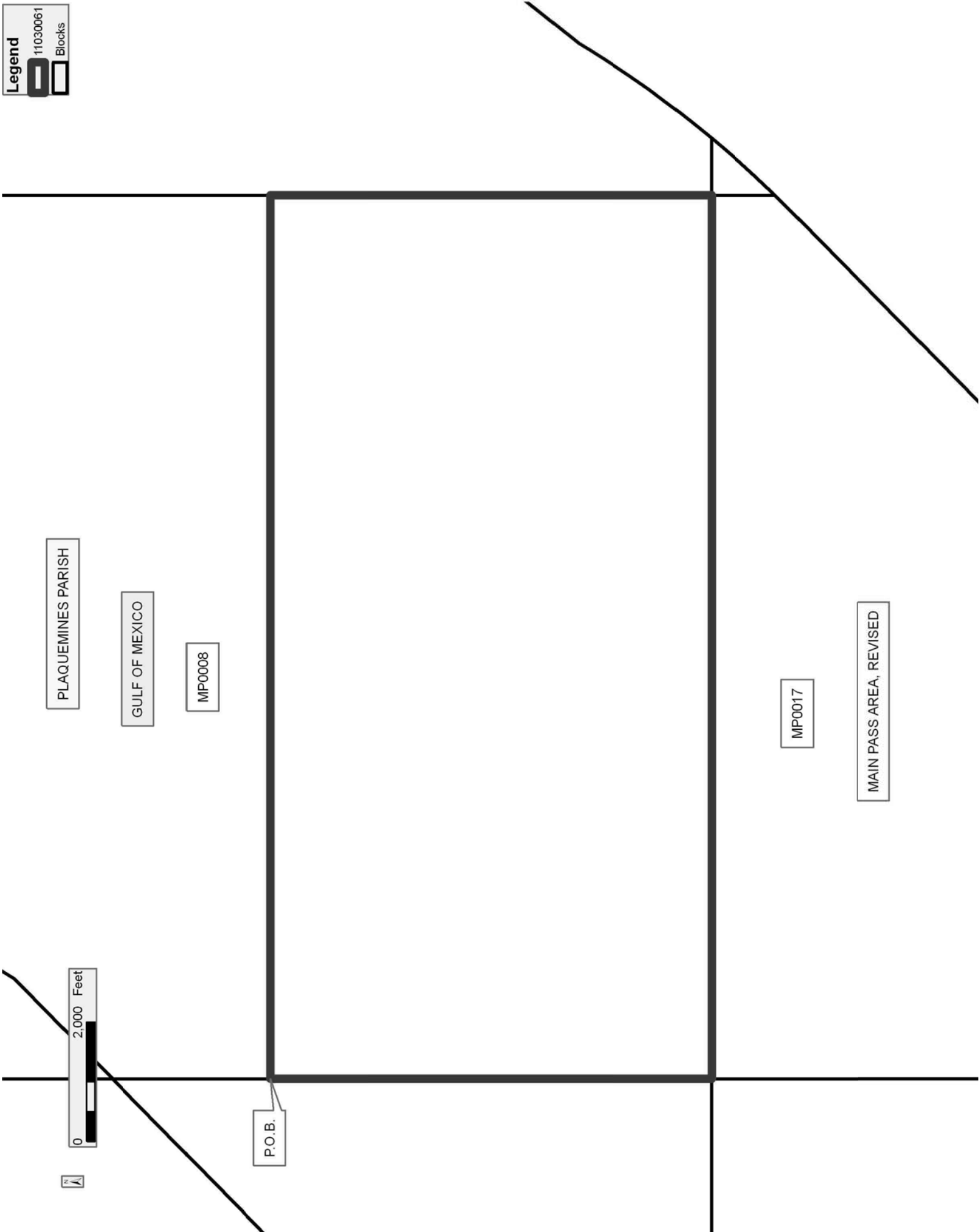
Applicant: CYPRESS ENERGY CORPORATION

| Bidder | Cash<br>Payment | Price/<br>Acre | Rental | Oil | Gas | Other |
|--------|-----------------|----------------|--------|-----|-----|-------|
|        |                 |                |        |     |     |       |
|        |                 |                |        |     |     |       |
|        |                 |                |        |     |     |       |
|        |                 |                |        |     |     |       |

Legend

11030061

Blocks



**TRACT 41877 - Portion of Block 2, East Cameron Area, Revised, Cameron Parish, Louisiana**

The beds and bottoms of all water bodies belonging to the State of Louisiana located in Block 2, East Cameron Area, Revised, together with any present lands formed by accretion to the shoreline or islands formed therein, located in Cameron Parish, Louisiana, owned by and not presently under mineral lease as of March 9, 2011, from the State of Louisiana, the geographical area of which is more fully described as follows: Beginning at the Northeast corner of State Lease No. 18121 located on the North line of Block 2 of the East Cameron Area, Revised having Coordinates of X = 1,471,741.95 and Y = 374,758.05; thence East 8,258.05 feet along the North line of said Block 2 to its Northeast corner having Coordinates of X = 1,480,000.00 and Y = 374,758.05; thence South 10,967.82 feet along the East line of said Block 2 to a point on the Three Mile Line, as decreed by the Supreme Court of the United States, as determined by a Special Master appointed therein, in litigation styled *United States v. State of Louisiana et al No. 9 Original*, in 1975, having Coordinates of X = 1,480,000.00 and Y = 363,790.23; thence Northwesterly on a straight line to a point having Coordinates of X = 1,472,522.00 and Y = 367,321.00; thence Northwesterly on a straight line to the Southeast corner of State Lease No. 19302 having Coordinates of X = 1,466,313.77 and Y = 369,735.05; thence North 43 degrees 52 minutes 02 seconds East 1,579.02 feet along the Eastern boundary of said State Lease No. 19302 to the Southwest corner of said State Lease No. 18121 having Coordinates of X = 1,467,408.01 and Y = 370,873.44; thence along the South and East boundary of said State Lease No. 18121 the following courses and distances: East 4,333.94 feet to a corner having Coordinates of X = 1,471,741.95 and Y = 370,873.44 and North 3,884.61 feet to the point of beginning, containing approximately **1,969.33 acres, LESS AND EXCEPT** that portion thereof, if any, lying seaward of the line three nautical miles from the coast line of Louisiana, as said three mile line has been decreed by the Supreme Court of the United States, as determined by a Special Master appointed therein, in litigation styled **United States v. State of Louisiana et al No. 9 Original**, in 1975, all as more particularly outlined on a plat in the Office of Mineral Resources, Department of Natural Resources. All bearings, distances and coordinates are based on the Louisiana Coordinate System of 1927, (South Zone).

NOTE: The above description of the Tract nominated for lease has been provided and corrected, where required, exclusively by the nomination party. Any mineral lease selected from this Tract and awarded by the Louisiana State Mineral and Energy Board shall be without warranty of any kind, either express, implied, or statutory, including, but not limited to, the implied warranties of merchantability and fitness for a particular purpose. Should the mineral lease awarded by the Louisiana State Mineral and Energy Board be subsequently modified, cancelled or abrogated due to the existence of conflicting leases, operating agreements, private claims or other future obligations or conditions which may affect all or any portion of the leased Tract, it shall not relieve the Lessee of the obligation to pay any bonus due thereon to the Louisiana State Mineral and

Energy Board, nor shall the Louisiana State Mineral and Energy Board be obligated to refund any consideration paid by the Lessor prior to such modification, cancellation, or abrogation, including, but not limited to, bonuses, rentals and royalties.

NOTE: The State of Louisiana does hereby reserve, and this lease shall be subject to, the imprescriptible right of surface use in the nature of a servitude in favor of the Department of Natural Resources, including its Offices and Commissions, for the sole purpose of implementing, constructing, servicing and maintaining approved coastal zone management and/or restoration projects. Utilization of any and all rights derived under this lease by the mineral lessee, its agents, successors or assigns, shall not interfere with nor hinder the reasonable surface use by the Department of Natural Resources, its Offices or Commissions, as herein above reserved.

Applicant: THEOPHILUS OIL, GAS & LAND SERVICES, LLC

| Bidder | Cash<br>Payment | Price/<br>Acre | Rental | Oil | Gas | Other |
|--------|-----------------|----------------|--------|-----|-----|-------|
|        |                 |                |        |     |     |       |
|        |                 |                |        |     |     |       |
|        |                 |                |        |     |     |       |
|        |                 |                |        |     |     |       |

**Legend**

- 11030141
- Blocks
- Active Leases

EC0001

CAMERON PARISH

EAST CAMERON AREA, REVISED

GULF OF MEXICO

SL 1170

P.O.B.

EC0003

SL 18121

EC0002

SL 19302





**TRACT 41878 - Portion of Block 4, East Cameron Area, Revised, Cameron Parish, Louisiana**

The beds and bottoms of all water bodies belonging to the State of Louisiana located in Block 4, East Cameron Area, Revised, together with any present lands formed by accretion to the shoreline or islands formed therein, located in Cameron Parish, Louisiana, owned by and not presently under mineral lease as of March 9, 2011, from the State of Louisiana, the geographical area of which is more fully described as follows: Beginning at a point on the West line of Block 4, East Cameron Area, Revised, having Coordinates of X = 1,493,033.33 and Y = 366,679.59; thence North approximately 8,542 feet along the West line of said Block 4 to a point on the South boundary of the Rockefeller Wildlife Refuge having a Coordinate of X = 1,493,033.33; thence Southeasterly along the meanders of said boundary to a point of intersection with an East-West line having a Coordinate of Y = 366,679.59; thence West approximately 15,094 feet to the point of beginning, **LESS AND EXCEPT** that portion, if any, of the above described tract which may lie within the boundary of the Rockefeller Wildlife Refuge; the above described tract containing approximately **1,498 acres**, all as more particularly outlined on a plat on file in the Office of Mineral Resources, Department of Natural Resources. All bearings, distances and coordinates are based on Louisiana Coordinate System of 1927, (North or South Zone).

NOTE: The above description of the Tract nominated for lease has been provided and corrected, where required, exclusively by the nomination party. Any mineral lease selected from this Tract and awarded by the Louisiana State Mineral and Energy Board shall be without warranty of any kind, either express, implied, or statutory, including, but not limited to, the implied warranties of merchantability and fitness for a particular purpose. Should the mineral lease awarded by the Louisiana State Mineral and Energy Board be subsequently modified, cancelled or abrogated due to the existence of conflicting leases, operating agreements, private claims or other future obligations or conditions which may affect all or any portion of the leased Tract, it shall not relieve the Lessee of the obligation to pay any bonus due thereon to the Louisiana State Mineral and Energy Board, nor shall the Louisiana State Mineral and Energy Board be obligated to refund any consideration paid by the Lessor prior to such modification, cancellation, or abrogation, including, but not limited to, bonuses, rentals and royalties.

NOTE: The State of Louisiana does hereby reserve, and this lease shall be subject to, the imprescriptible right of surface use in the nature of a servitude in favor of the Department of Natural Resources, including its Offices and Commissions, for the sole purpose of implementing, constructing, servicing and maintaining approved coastal zone management and/or restoration projects. Utilization of any and all rights derived under this lease by the mineral lessee, its agents, successors or assigns, shall not interfere with nor hinder the reasonable surface use by the

Department of Natural Resources, its Offices or Commissions, as herein above reserved.

Applicant: THEOPHILUS OIL, GAS & LAND SERVICES, LLC

| Bidder | Cash<br>Payment | Price/<br>Acre | Rental | Oil | Gas | Other |
|--------|-----------------|----------------|--------|-----|-----|-------|
|        |                 |                |        |     |     |       |
|        |                 |                |        |     |     |       |
|        |                 |                |        |     |     |       |
|        |                 |                |        |     |     |       |

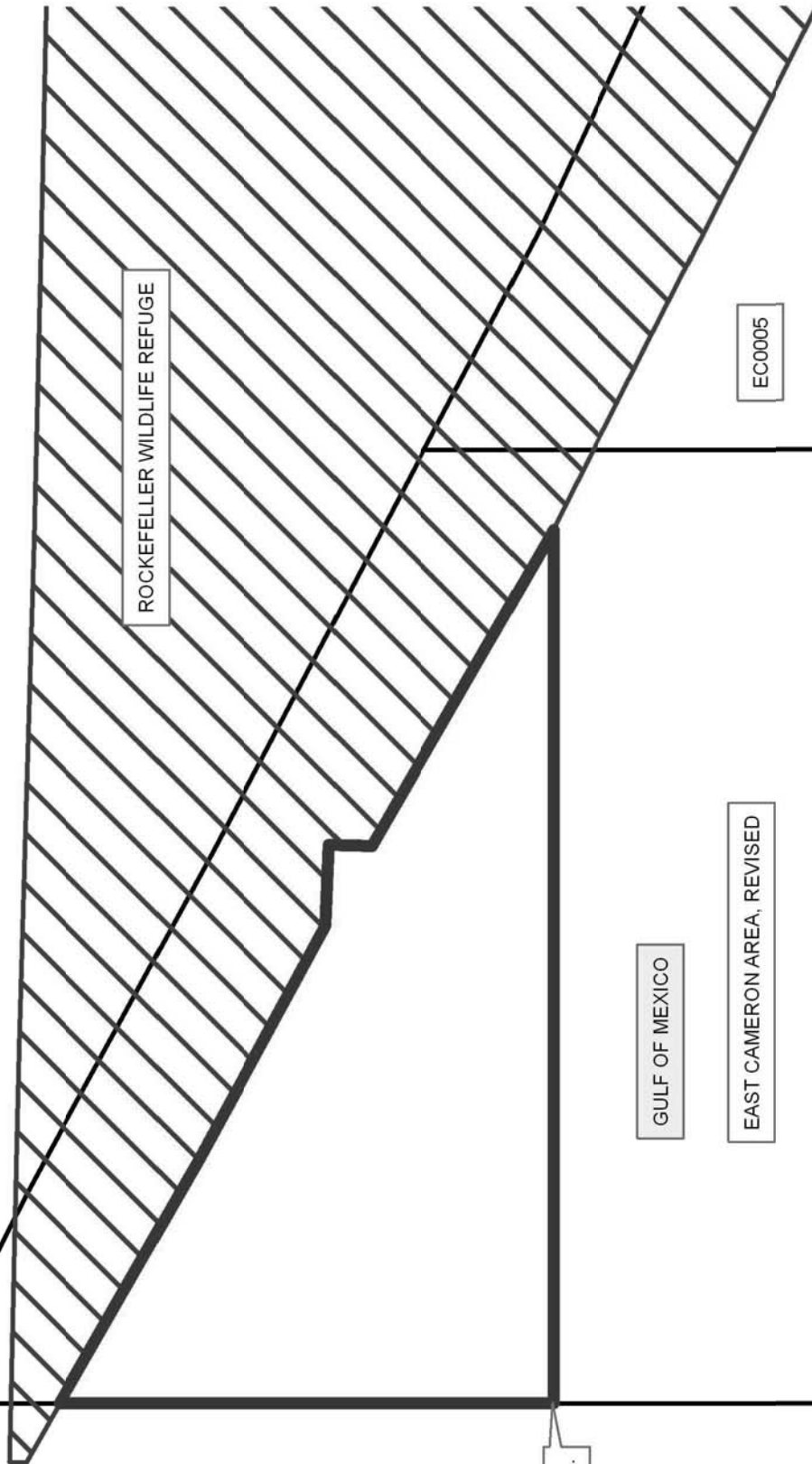
**Legend**

- 11030133
- Wildlife
- Blocks



CAMERON PARISH

T15S - R5W



ROCKEFELLER WILDLIFE REFUGE

EC0003

P.O.B.

GULF OF MEXICO

EAST CAMERON AREA, REVISED

EC0004

EC0005

**TRACT 41879 - Portion of Block 3, East Cameron Area, Revised, Cameron Parish, Louisiana**

The beds and bottoms of all water bodies belonging to the State of Louisiana located in Block 3, East Cameron Area, Revised, together with any present lands formed by accretion to the shoreline or islands formed therein, located in Cameron Parish, Louisiana, owned by and not presently under mineral lease as of March 9, 2011, from the State of Louisiana, the geographical area of which is more fully described as follows: Beginning at a point on the West line of Block 3, East Cameron Area, Revised having Coordinates of X = 1,480,000.00 and Y = 369,788.74; thence East 13,033.33 feet to a point on the East line of said Block 3 having Coordinates of X = 1,493,033.33 and Y = 369,788.74; thence South 8,977.68 feet along the East line of said Block 3 to a point having Coordinates of X = 1,493,033.33 and Y = 360,811.06; thence West 5,575.94 feet to a point having Coordinates of X = 1,487,457.39 and Y = 360,811.06; thence South 811.06 feet to a point on the Three Mile Line, as decreed by the Supreme Court of the United States, as determined by a Special Master appointed therein, in litigation styled *United States v. State of Louisiana et al No. 9 Original*, in 1975, having Coordinates of X = 1,487,457.39 and Y = 360,000.00; thence Northwesterly on a straight line to a point having Coordinates of X = 1,483,855 and Y = 361,809; thence Northwesterly along an arc having a radius of 18,240.60 feet and a center located at X = 1,492,040 and Y = 378,110 to a point having Coordinates of X = 1,483,320 and Y = 362,089; thence Northwesterly on a straight line to a point having Coordinates of X = 1,481,464 and Y = 363,099; thence Northwesterly on a straight line to a point on the West line of said Block 3 having Coordinates of X = 1,480,000.00 and Y = 363,790.23; thence North 5,998.51 feet along the West line of said Block 3 to the point of beginning, containing approximately **2,500.00 acres, LESS AND EXCEPT** that portion thereof, if any, lying seaward of the line three nautical miles from the coast line of Louisiana, as said three mile line has been decreed by the Supreme Court of the United States, as determined by a Special Master appointed therein, in litigation styled **United States v. State of Louisiana et al No. 9 Original**, in 1975, all as more particularly outlined on a plat in the Office of Mineral Resources, Department of Natural Resources. All bearings, distances and coordinates are based on the Louisiana Coordinate System of 1927, (South Zone).

NOTE: The above description of the Tract nominated for lease has been provided and corrected, where required, exclusively by the nomination party. Any mineral lease selected from this Tract and awarded by the Louisiana State Mineral and Energy Board shall be without warranty of any kind, either express, implied, or statutory, including, but not limited to, the implied warranties of merchantability and fitness for a particular purpose. Should the mineral lease awarded by the Louisiana State Mineral and Energy Board be subsequently modified, cancelled or abrogated due to the existence of conflicting leases, operating agreements, private claims or other future obligations or conditions which may affect all or any portion of the leased Tract, it shall not relieve the Lessee of the

obligation to pay any bonus due thereon to the Louisiana State Mineral and Energy Board, nor shall the Louisiana State Mineral and Energy Board be obligated to refund any consideration paid by the Lessor prior to such modification, cancellation, or abrogation, including, but not limited to, bonuses, rentals and royalties.

NOTE: The State of Louisiana does hereby reserve, and this lease shall be subject to, the imprescriptible right of surface use in the nature of a servitude in favor of the Department of Natural Resources, including its Offices and Commissions, for the sole purpose of implementing, constructing, servicing and maintaining approved coastal zone management and/or restoration projects. Utilization of any and all rights derived under this lease by the mineral lessee, its agents, successors or assigns, shall not interfere with nor hinder the reasonable surface use by the Department of Natural Resources, its Offices or Commissions, as herein above reserved.

Applicant: THEOPHILUS OIL, GAS & LAND SERVICES, LLC

| Bidder | Cash<br>Payment | Price/<br>Acre | Rental | Oil | Gas | Other |
|--------|-----------------|----------------|--------|-----|-----|-------|
|        |                 |                |        |     |     |       |
|        |                 |                |        |     |     |       |
|        |                 |                |        |     |     |       |
|        |                 |                |        |     |     |       |

Legend

11030143

Blocks

CAMERON PARISH

GULF OF MEXICO

EC0003

EC0004

EAST CAMERON AREA, REVISE



P.O.B.

EC0002