

**TRACT 41860 - Portion of Block 5, West Cameron Area, Revised, Cameron Parish, Louisiana**

The beds and bottoms of all water bodies belonging to the State of Louisiana located in Block 5, West Cameron Area, Revised, together with any present lands formed by accretion to the shoreline or islands formed therein, located in Cameron Parish, Louisiana, owned by and not presently under mineral lease as of March 9, 2011, from the State of Louisiana, the geographical area of which is more fully described as follows: Beginning at the Southwest corner of Block 5, West Cameron Area, Revised having Coordinates of X = 1,361,935.62 and Y = 393,790.24; thence North 4,390.47 feet along the West line of said Block 5 to a point on the Louisiana Coastline, as decreed by the Supreme Court of the United States, as determined by a Special Master appointed therein, in litigation styled *United States v. State of Louisiana et al No. 9 Original*, in 1975, having Coordinates of X = 1,361,935.62 and Y = 398,180.71; thence Southerly on a straight line to a point having Coordinates of X = 1,362,416 and Y = 397,822; thence Easterly on a straight line to a point having Coordinates of X = 1,363,392 and Y = 397,870; thence Northerly on a straight line to a point on the North line of said Block 5 having Coordinates of X = 1,366,090.03 and Y = 400,409.59; thence East 11,205.39 feet to a point on the East line of said Block 5 having Coordinates of X = 1,377,295.42 and Y = 400,409.59; thence South 6,619.35 feet along the East line of said Block 5 to its Southeast corner having Coordinates of X = 1,377,295.42 and Y = 393,790.24; thence West 15,359.80 feet along the South line of said Block 5 to the point of beginning, containing approximately **2,171.42 acres**, all as more particularly outlined on a plat on file in the Office of Mineral Resources, Department of Natural Resources. All bearings, distances and coordinates are based on Louisiana Coordinate System of 1927, (North or South Zone).

NOTE: The above description of the Tract nominated for lease has been provided and corrected, where required, exclusively by the nomination party. Any mineral lease selected from this Tract and awarded by the Louisiana State Mineral and Energy Board shall be without warranty of any kind, either express, implied, or statutory, including, but not limited to, the implied warranties of merchantability and fitness for a particular purpose. Should the mineral lease awarded by the Louisiana State Mineral and Energy Board be subsequently modified, cancelled or abrogated due to the existence of conflicting leases, operating agreements, private claims or other future obligations or conditions which may affect all or any portion of the leased Tract, it shall not relieve the Lessee of the obligation to pay any bonus due thereon to the Louisiana State Mineral and Energy Board, nor shall the Louisiana State Mineral and Energy Board be obligated to refund any consideration paid by the Lessor prior to such modification, cancellation, or abrogation, including, but not limited to, bonuses, rentals and royalties.

NOTE: The State of Louisiana does hereby reserve, and this lease shall be subject to, the imprescriptible right of surface use in the nature of a servitude in favor of the Department of Natural Resources, including its

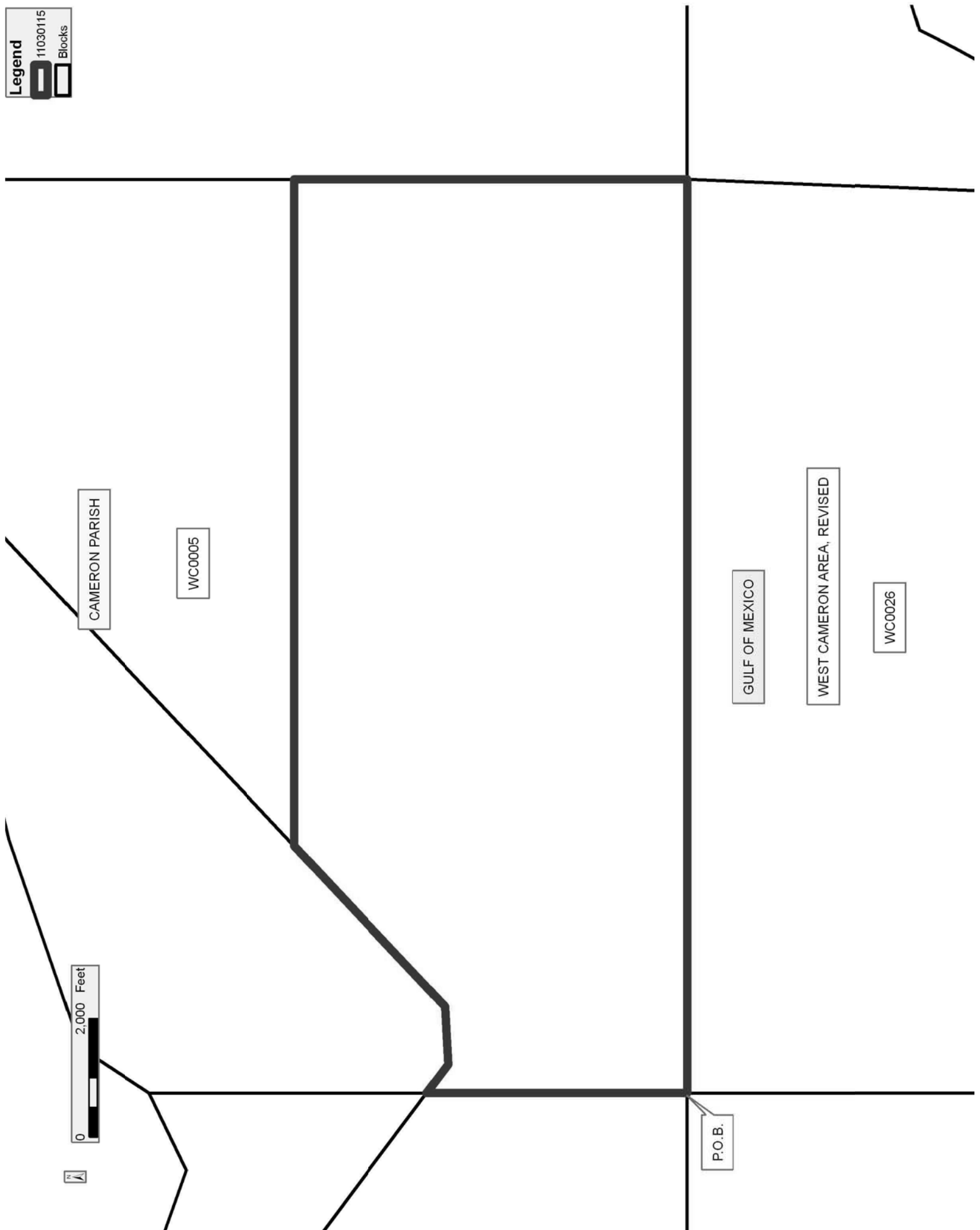
Offices and Commissions, for the sole purpose of implementing, constructing, servicing and maintaining approved coastal zone management and/or restoration projects. Utilization of any and all rights derived under this lease by the mineral lessee, its agents, successors or assigns, shall not interfere with nor hinder the reasonable surface use by the Department of Natural Resources, its Offices or Commissions, as herein above reserved.

NOTE: It appears, according to our records, that a portion of this Tract is located within the restrictive safety fairway area as set out by the Corps of Engineers, U.S. Army and/or the restrictive anchorage area as set out by the U.S. Coast Guard.

Applicant: THEOPHILUS OIL, GAS & LAND SERVICES, LLC

Bidder	Cash Payment	Price/Acre	Rental	Oil	Gas	Other

Legend  
11030115  
Blocks



**TRACT 41861 - Portion of Block 8, West Cameron Area, Revised, Cameron Parish, Louisiana**

The beds and bottoms of all water bodies belonging to the State of Louisiana located in Block 8, West Cameron Area, Revised, together with any present lands formed by accretion to the shoreline or islands formed therein, located in Cameron Parish, Louisiana, owned by and not presently under mineral lease as of March 9, 2011, from the State of Louisiana, the geographical area of which is more fully described as follows: Beginning at a point on the West line of Block 8, West Cameron Area, Revised having Coordinates of X = 1,317,661.47 and Y = 400,409.59; thence East 14,758.05 feet to a point on the East line of said Block 8 having Coordinates of X = 1,332,419.52 and Y = 400,409.59; thence South 6,619.35 feet along the East line of said Block 8 to its Southeast corner having Coordinates of X = 1,332,419.52 and Y = 393,790.24; thence West 14,758.05 feet along the South line of said Block 8 to its Southwest corner having Coordinates of X = 1,317,661.47 and Y = 393,790.24; thence North 6,619.35 feet along the West line of said Block 8 to the point of beginning, containing approximately **2,242.62 acres**, all as more particularly outlined on a plat on file in the Office of Mineral Resources, Department of Natural Resources. All bearings, distances and coordinates are based on Louisiana Coordinate System of 1927, (North or South Zone).

NOTE: The above description of the Tract nominated for lease has been provided and corrected, where required, exclusively by the nomination party. Any mineral lease selected from this Tract and awarded by the Louisiana State Mineral and Energy Board shall be without warranty of any kind, either express, implied, or statutory, including, but not limited to, the implied warranties of merchantability and fitness for a particular purpose. Should the mineral lease awarded by the Louisiana State Mineral and Energy Board be subsequently modified, cancelled or abrogated due to the existence of conflicting leases, operating agreements, private claims or other future obligations or conditions which may affect all or any portion of the leased Tract, it shall not relieve the Lessee of the obligation to pay any bonus due thereon to the Louisiana State Mineral and Energy Board, nor shall the Louisiana State Mineral and Energy Board be obligated to refund any consideration paid by the Lessor prior to such modification, cancellation, or abrogation, including, but not limited to, bonuses, rentals and royalties.

NOTE: The State of Louisiana does hereby reserve, and this lease shall be subject to, the imprescriptible right of surface use in the nature of a servitude in favor of the Department of Natural Resources, including its Offices and Commissions, for the sole purpose of implementing, constructing, servicing and maintaining approved coastal zone management and/or restoration projects. Utilization of any and all rights derived under this lease by the mineral lessee, its agents, successors or assigns, shall not interfere with nor hinder the reasonable surface use by the Department of Natural Resources, its Offices or Commissions, as herein above reserved.

Applicant: THEOPHILUS OIL, GAS & LAND SERVICES, LLC

Bidder	Cash Payment	Price/Acre	Rental	Oil	Gas	Other

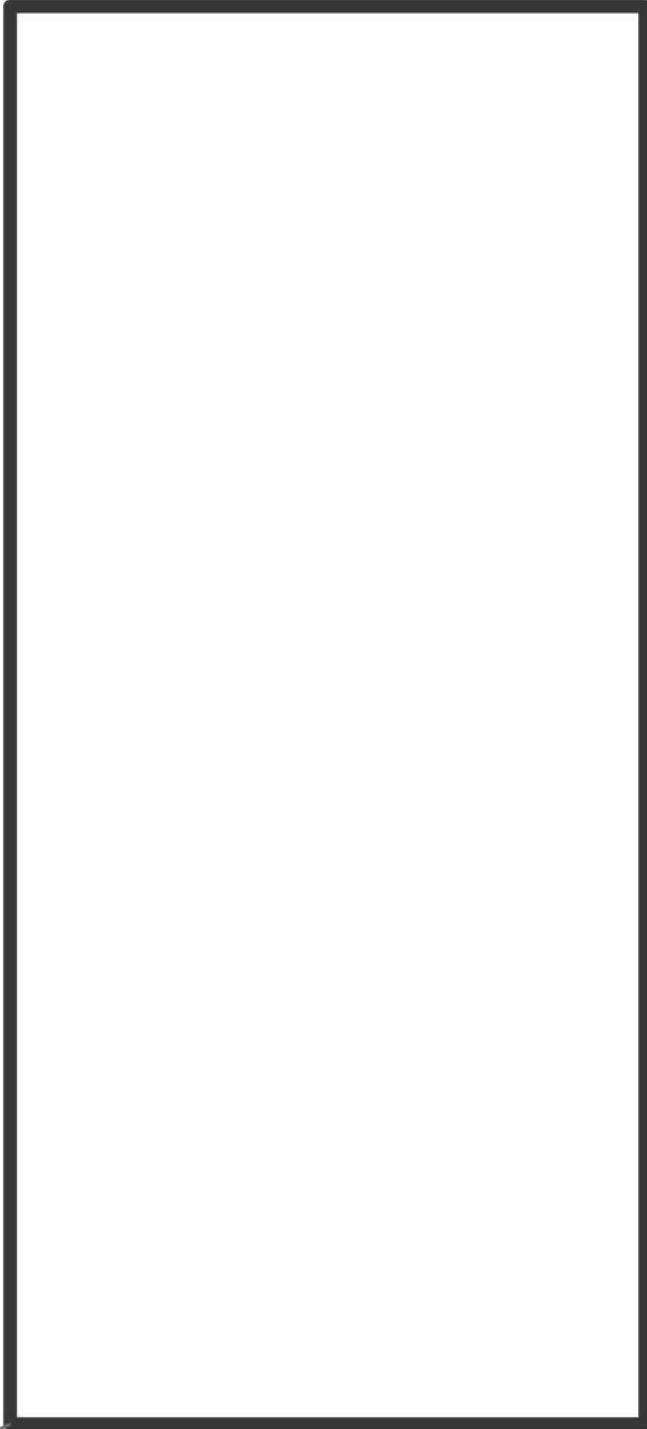


CAMERON PARISH

GULF OF MEXICO

WC0008

P.O.B.



WEST CAMERON AREA, REVISED

WC0023

**TRACT 41862 - Portion of Block 25, West Cameron Area, Revised, Cameron Parish, Louisiana**

The beds and bottoms of all water bodies belonging to the State of Louisiana located in Block 25, West Cameron Area, Revised, together with any present lands formed by accretion to the shoreline or islands formed therein, located in Cameron Parish, Louisiana, owned by and not presently under mineral lease as of March 9, 2011, from the State of Louisiana, the geographical area of which is more fully described as follows: Beginning at the Northwest corner of Block 25, West Cameron Area, Revised having Coordinates of X = 1,347,177.57 and Y = 393,790.24; thence East 14,758.05 feet along the North line of said Block 25 to its Northeast corner having Coordinates of X = 1,361,935.62 and Y = 393,790.24; thence South 7,023.29 feet along the East line of said Block 25 to a point having Coordinates of X = 1,361,935.62 and Y = 386,766.95; thence West 14,758.05 feet to a point on the West line of said Block 25 having Coordinates of X = 1,347,177.57 and Y = 386,766.95; thence North 7,023.29 feet along the West line of said Block 25 to the point of beginning, containing approximately **2,379.48 acres, LESS AND EXCEPT** that portion thereof, if any, lying seaward of the line three nautical miles from the coast line of Louisiana, as said three mile line has been decreed by the Supreme Court of the United States, as determined by a Special Master appointed therein, in litigation styled **United States v. State of Louisiana et al No. 9 Original**, in 1975, all as more particularly outlined on a plat in the Office of Mineral Resources, Department of Natural Resources. All bearings, distances and coordinates are based on the Louisiana Coordinate System of 1927, (South Zone).

NOTE: The above description of the Tract nominated for lease has been provided and corrected, where required, exclusively by the nomination party. Any mineral lease selected from this Tract and awarded by the Louisiana State Mineral and Energy Board shall be without warranty of any kind, either express, implied, or statutory, including, but not limited to, the implied warranties of merchantability and fitness for a particular purpose. Should the mineral lease awarded by the Louisiana State Mineral and Energy Board be subsequently modified, cancelled or abrogated due to the existence of conflicting leases, operating agreements, private claims or other future obligations or conditions which may affect all or any portion of the leased Tract, it shall not relieve the Lessee of the obligation to pay any bonus due thereon to the Louisiana State Mineral and Energy Board, nor shall the Louisiana State Mineral and Energy Board be obligated to refund any consideration paid by the Lessor prior to such modification, cancellation, or abrogation, including, but not limited to, bonuses, rentals and royalties.

NOTE: The State of Louisiana does hereby reserve, and this lease shall be subject to, the imprescriptible right of surface use in the nature of a servitude in favor of the Department of Natural Resources, including its Offices and Commissions, for the sole purpose of implementing, constructing, servicing and maintaining approved coastal zone management and/or restoration projects. Utilization of any and all rights derived

under this lease by the mineral lessee, its agents, successors or assigns, shall not interfere with nor hinder the reasonable surface use by the Department of Natural Resources, its Offices or Commissions, as herein above reserved.

NOTE: It appears, according to our records, that a portion of this Tract is located within the restrictive safety fairway area as set out by the Corps of Engineers, U.S. Army and/or the restrictive anchorage area as set out by the U.S. Coast Guard.

Applicant: THEOPHILUS OIL, GAS & LAND SERVICES, LLC

Bidder	Cash Payment	Price/Acre	Rental	Oil	Gas	Other



Legend

11030112

Blocks

CAMERON PARISH

GULF OF MEXICO

WC0006

WC0025

WEST CAMERON AREA, REVISED

P.O.B.



**TRACT 41863 - Portion of Block 26, West Cameron Area, Revised, Cameron Parish, Louisiana**

The beds and bottoms of all water bodies belonging to the State of Louisiana located in Block 26, West Cameron Area, Revised, together with any present lands formed by accretion to the shoreline or islands formed therein, located in Cameron Parish, Louisiana, owned by and not presently under mineral lease as of March 9, 2011, from the State of Louisiana, the geographical area of which is more fully described as follows: Beginning at the Northwest corner of Block 26, West Cameron Area, Revised having Coordinates of X = 1,361,935.62 and Y = 393,790.24; thence East 14,758.04 feet along the North line of said Block 26 to its Northeast corner having Coordinates of X = 1,376,693.66 and Y = 393,790.24; thence South 7,023.29 feet along the East line of said Block 26 to a point having Coordinates of X = 1,376,693.66 and Y = 386,766.95; thence West 14,758.04 feet to a point on the West line of said Block 26 having Coordinates of X = 1,361,935.62 and Y = 386,766.95; thence North 7,023.29 feet along the West line of said Block 26 to the point of beginning, containing approximately **2,379.48 acres**, all as more particularly outlined on a plat on file in the Office of Mineral Resources, Department of Natural Resources. All bearings, distances and coordinates are based on Louisiana Coordinate System of 1927, (North or South Zone).

NOTE: The above description of the Tract nominated for lease has been provided and corrected, where required, exclusively by the nomination party. Any mineral lease selected from this Tract and awarded by the Louisiana State Mineral and Energy Board shall be without warranty of any kind, either express, implied, or statutory, including, but not limited to, the implied warranties of merchantability and fitness for a particular purpose. Should the mineral lease awarded by the Louisiana State Mineral and Energy Board be subsequently modified, cancelled or abrogated due to the existence of conflicting leases, operating agreements, private claims or other future obligations or conditions which may affect all or any portion of the leased Tract, it shall not relieve the Lessee of the obligation to pay any bonus due thereon to the Louisiana State Mineral and Energy Board, nor shall the Louisiana State Mineral and Energy Board be obligated to refund any consideration paid by the Lessor prior to such modification, cancellation, or abrogation, including, but not limited to, bonuses, rentals and royalties.

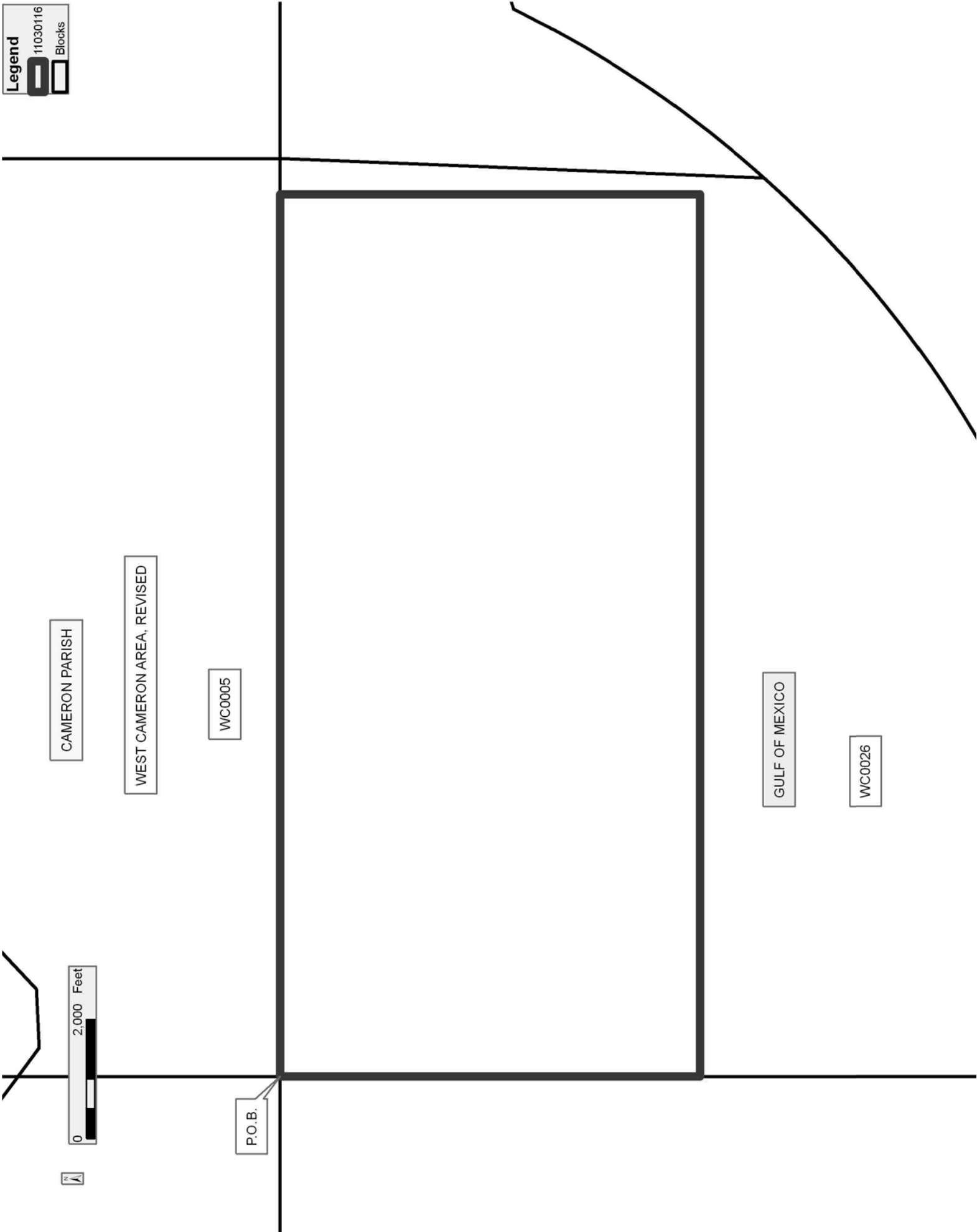
NOTE: The State of Louisiana does hereby reserve, and this lease shall be subject to, the imprescriptible right of surface use in the nature of a servitude in favor of the Department of Natural Resources, including its Offices and Commissions, for the sole purpose of implementing, constructing, servicing and maintaining approved coastal zone management and/or restoration projects. Utilization of any and all rights derived under this lease by the mineral lessee, its agents, successors or assigns, shall not interfere with nor hinder the reasonable surface use by the Department of Natural Resources, its Offices or Commissions, as herein above reserved.

NOTE: It appears, according to our records, that a portion of this Tract is located within the restrictive safety fairway area as set out by the Corps of Engineers, U.S. Army and/or the restrictive anchorage area as set out by the U.S. Coast Guard.

Applicant: THEOPHILUS OIL, GAS & LAND SERVICES, LLC

Bidder	Cash Payment	Price/Acre	Rental	Oil	Gas	Other

Legend  
11030116  
Blocks



**TRACT 41864 - Portion of Blocks 26, and 27, West Cameron Area, Revised, Cameron Parish, Louisiana**

The beds and bottoms of all water bodies belonging to the State of Louisiana located in Blocks 26, and 27, West Cameron Area, Revised, together with any present lands formed by accretion to the shoreline or islands formed therein, located in Cameron Parish, Louisiana, owned by and not presently under mineral lease as of March 9, 2011, from the State of Louisiana, the geographical area of which is more fully described as follows: Beginning at the Northwest corner of Block 27, West Cameron Area, Revised having Coordinates of X = 1,376,693.66 and Y = 393,790.24; thence East 14,758.05 feet along the North line of said Block 27 to its Northeast corner having Coordinates of X = 1,391,451.71 and Y = 393,790.24; thence South 2,850.79 feet along the East line of said Block 27 to a point on the Three Mile Line, as decreed by the Supreme Court of the United States, as determined by a Special Master appointed therein, in litigation styled *United States v. State of Louisiana et al No. 9 Original*, in 1975, having Coordinates of X = 1,391,451.71 and Y = 390,939.45; thence Northwesterly on a straight line to a point having Coordinates of X = 1,390,919 and Y = 390,971; thence Westerly along an arc having a radius of 18,240.60 feet and a center located at X = 1,392,000 and Y = 409,180 to a point having Coordinates of X = 1,390,575 and Y = 390,995; thence Southwesterly on a straight line to a point having Coordinates of X = 1,386,958 and Y = 390,977; thence Southwesterly on a straight line to a point having Coordinates of X = 1,385,797 and Y = 390,942; thence Southwesterly on a straight line to a point having Coordinates of X = 1,383,281 and Y = 390,516; thence along an arc having a radius of 18,240.60 feet and a center located at X = 1,380,235 and Y = 408,500 to a point having Coordinates of X = 1,382,827 and Y = 390,444; thence Southwesterly on a straight line to a point having Coordinates of X = 1,380,530 and Y = 390,115; thence Southwesterly on a straight line to a point having Coordinates of X = 1,379,793 and Y = 389,887; thence along an arc having a radius of 18,240.60 feet and a center located at X = 1,363,392 and Y = 397,870 to a point on the west line of said Block 27 having Coordinates of X = 1,376,693.66 and Y = 385,388.34; thence North 8,401.90 feet along the West line of said Block 27 to the point of beginning, containing approximately **1,280.68 acres, LESS AND EXCEPT** that portion thereof, if any, lying seaward of the line three nautical miles from the coast line of Louisiana, as said three mile line has been decreed by the Supreme Court of the United States, as determined by a Special Master appointed therein, in litigation styled **United States v. State of Louisiana et al No. 9 Original**, in 1975, all as more particularly outlined on a plat in the Office of Mineral Resources, Department of Natural Resources. All bearings, distances and coordinates are based on the Louisiana Coordinate System of 1927, (South Zone).

NOTE: The above description of the Tract nominated for lease has been provided and corrected, where required, exclusively by the nomination party. Any mineral lease selected from this Tract and awarded by the Louisiana State Mineral and Energy Board shall be without warranty of any

kind, either express, implied, or statutory, including, but not limited to, the implied warranties of merchantability and fitness for a particular purpose. Should the mineral lease awarded by the Louisiana State Mineral and Energy Board be subsequently modified, cancelled or abrogated due to the existence of conflicting leases, operating agreements, private claims or other future obligations or conditions which may affect all or any portion of the leased Tract, it shall not relieve the Lessee of the obligation to pay any bonus due thereon to the Louisiana State Mineral and Energy Board, nor shall the Louisiana State Mineral and Energy Board be obligated to refund any consideration paid by the Lessor prior to such modification, cancellation, or abrogation, including, but not limited to, bonuses, rentals and royalties.

NOTE: The State of Louisiana does hereby reserve, and this lease shall be subject to, the imprescriptible right of surface use in the nature of a servitude in favor of the Department of Natural Resources, including its Offices and Commissions, for the sole purpose of implementing, constructing, servicing and maintaining approved coastal zone management and/or restoration projects. Utilization of any and all rights derived under this lease by the mineral lessee, its agents, successors or assigns, shall not interfere with nor hinder the reasonable surface use by the Department of Natural Resources, its Offices or Commissions, as herein above reserved.

Applicant: THEOPHILUS OIL, GAS & LAND SERVICES, LLC

Bidder	Cash Payment	Price/Acre	Rental	Oil	Gas	Other

CAMERON PARISH

WC0004

WEST CAMERON AREA, REVISED

GULF OF MEXICO

WC0027

P.O.B.



**TRACT 41865 - Portion of Block 28, West Cameron Area, Revised, Cameron Parish, Louisiana**

The beds and bottoms of all water bodies belonging to the State of Louisiana located in Block 28, West Cameron Area, Revised, together with any present lands formed by accretion to the shoreline or islands formed therein, located in Cameron Parish, Louisiana, owned by and not presently under mineral lease as of March 9, 2011, from the State of Louisiana, the geographical area of which is more fully described as follows: Beginning at the Northwest corner of Block 28, West Cameron Area, Revised having Coordinates of X = 1,391,451.71 and Y = 393,790.24; thence East 14,758.05 feet along the North line of said Block 28 to its Northeast corner having Coordinates of X = 1,406,209.76 and Y = 393,790.24; thence South 4,531.71 feet along the East line of said Block 28 to a point on the Three Mile Line, as decreed by the Supreme Court of the United States, as determined by a Special Master appointed therein, in litigation styled *United States v. State of Louisiana et al No. 9 Original*, in 1975, having Coordinates of X = 1,406,209.76 and Y = 389,258.53; thence Northwesterly on a straight line to a point having Coordinates of X = 1,400,158.00 and Y = 390,267.00; thence Northwesterly on a straight line to a point having Coordinates of X = 1,395,815.00 and Y = 390,681.00; thence Northwesterly on a straight line to a point on the West line of said Block 28 having Coordinates of X = 1,391,451.71 and Y = 390,939.45; thence North 2,850.79 feet along the West line of said Block 28 to the point of beginning, containing approximately **1,188.67 acres, LESS AND EXCEPT** that portion thereof, if any, lying seaward of the line three nautical miles from the coast line of Louisiana, as said three mile line has been decreed by the Supreme Court of the United States, as determined by a Special Master appointed therein, in litigation styled **United States v. State of Louisiana et al No. 9 Original**, in 1975, all as more particularly outlined on a plat in the Office of Mineral Resources, Department of Natural Resources. All bearings, distances and coordinates are based on the Louisiana Coordinate System of 1927, (South Zone).

NOTE: The above description of the Tract nominated for lease has been provided and corrected, where required, exclusively by the nomination party. Any mineral lease selected from this Tract and awarded by the Louisiana State Mineral and Energy Board shall be without warranty of any kind, either express, implied, or statutory, including, but not limited to, the implied warranties of merchantability and fitness for a particular purpose. Should the mineral lease awarded by the Louisiana State Mineral and Energy Board be subsequently modified, cancelled or abrogated due to the existence of conflicting leases, operating agreements, private claims or other future obligations or conditions which may affect all or any portion of the leased Tract, it shall not relieve the Lessee of the obligation to pay any bonus due thereon to the Louisiana State Mineral and Energy Board, nor shall the Louisiana State Mineral and Energy Board be obligated to refund any consideration paid by the Lessor prior to such modification, cancellation, or abrogation, including, but not limited to, bonuses, rentals and royalties.



NOTE: The State of Louisiana does hereby reserve, and this lease shall be subject to, the imprescriptible right of surface use in the nature of a servitude in favor of the Department of Natural Resources, including its Offices and Commissions, for the sole purpose of implementing, constructing, servicing and maintaining approved coastal zone management and/or restoration projects. Utilization of any and all rights derived under this lease by the mineral lessee, its agents, successors or assigns, shall not interfere with nor hinder the reasonable surface use by the Department of Natural Resources, its Offices or Commissions, as herein above reserved.

Applicant: THEOPHILUS OIL, GAS & LAND SERVICES, LLC

Bidder	Cash Payment	Price/Acre	Rental	Oil	Gas	Other

Legend  
11030123  
Blocks

CAMERON PARISH

GULF OF MEXICO

WC0003

WEST CAMERON AREA, REVISED

0 2,000 Feet



P.O.B.

**TRACT 41866 - Portion of Block 5, Main Pass Area, Revised, St. Bernard Parish, Louisiana**

The beds and bottoms of all water bodies belonging to the State of Louisiana located in Block 5, Main Pass Area, Revised, together with any present lands formed by accretion to the shoreline or islands formed therein, located in St. Bernard Parish, Louisiana, owned by and not presently under mineral lease as of March 9, 2011, from the State of Louisiana, the geographical area of which is more fully described as follows: Beginning at a point on having Coordinates of X = 2,768,100.01 and Y = 366,579.99; thence West 10,807.42 feet to a point on the Coastline as defined by the report of the Special Master and set forth in the judgment decree in June of 1975 by the Supreme Court of the United States in the litigation styled United States v. State of Louisiana, et al No. 9 Original, having Coordinates of X = 2,757,292.58 and Y = 366,579.99; thence along the Coastline the following courses: Northeasterly on a straight line to a point having Coordinates of X = 2,757,465 and Y = 367,862, Northeasterly on a straight line to a point having Coordinates of X = 2,758,093 and Y = 367,862, Northeasterly on a straight line to a point having Coordinates of X = 2,761,138 and Y = 371,491 and Northeasterly on a straight line to a point having Coordinates of X = 2,762,984.33 and Y = 373,954.99; thence East 5,115.66 feet to a point having Coordinates of X = 2,768,099.99 and Y = 373,954.99; thence South 7,375.00 feet to the point of beginning, estimated to contain **1,354.18 acres**, all as more particularly outlined on a plat on file in the Office of Mineral Resources, Department of Natural Resources. All bearings, distances and coordinates are based on Louisiana Coordinate System of 1927, (North or South Zone).

NOTE: The above description of the Tract nominated for lease has been provided and corrected, where required, exclusively by the nomination party. Any mineral lease selected from this Tract and awarded by the Louisiana State Mineral and Energy Board shall be without warranty of any kind, either express, implied, or statutory, including, but not limited to, the implied warranties of merchantability and fitness for a particular purpose. Should the mineral lease awarded by the Louisiana State Mineral and Energy Board be subsequently modified, cancelled or abrogated due to the existence of conflicting leases, operating agreements, private claims or other future obligations or conditions which may affect all or any portion of the leased Tract, it shall not relieve the Lessee of the obligation to pay any bonus due thereon to the Louisiana State Mineral and Energy Board, nor shall the Louisiana State Mineral and Energy Board be obligated to refund any consideration paid by the Lessor prior to such modification, cancellation, or abrogation, including, but not limited to, bonuses, rentals and royalties.

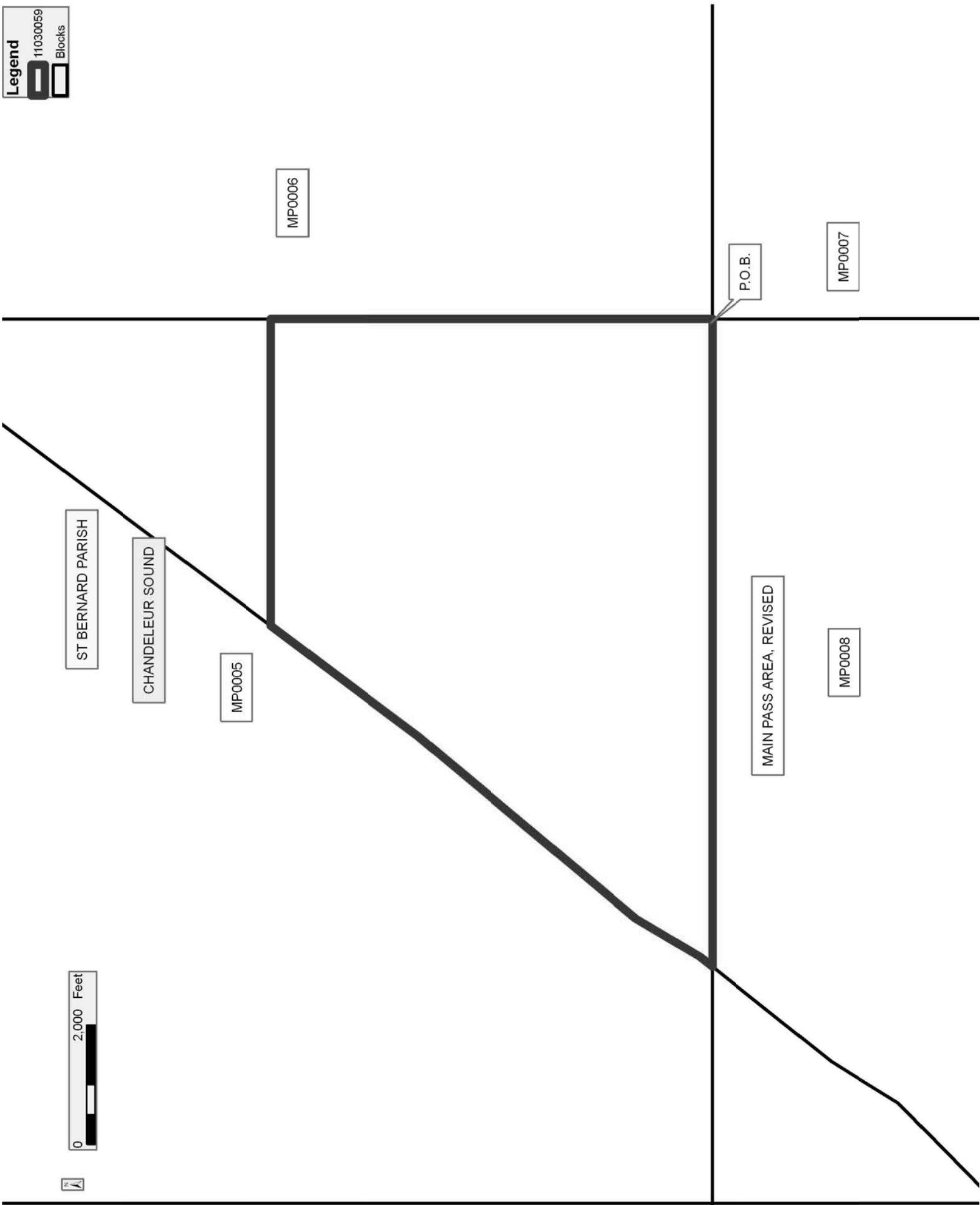
NOTE: The State of Louisiana does hereby reserve, and this lease shall be subject to, the imprescriptible right of surface use in the nature of a servitude in favor of the Department of Natural Resources, including its Offices and Commissions, for the sole purpose of implementing,

constructing, servicing and maintaining approved coastal zone management and/or restoration projects. Utilization of any and all rights derived under this lease by the mineral lessee, its agents, successors or assigns, shall not interfere with nor hinder the reasonable surface use by the Department of Natural Resources, its Offices or Commissions, as herein above reserved.

Applicant: CYPRESS ENERGY CORPORATION

Bidder	Cash Payment	Price/Acre	Rental	Oil	Gas	Other

Legend  
11030059  
Blocks



**TRACT 41867 - Portion of Block 23, West Cameron Area, Revised, Cameron Parish, Louisiana**

The beds and bottoms of all water bodies belonging to the State of Louisiana located in Block 23, West Cameron Area, Revised, together with any present lands formed by accretion to the shoreline or islands formed therein, located in Cameron Parish, Louisiana, owned by and not presently under mineral lease as of March 9, 2011, from the State of Louisiana, the geographical area of which is more fully described as follows: Beginning at Northwest corner of Block 23, West Cameron Area, Revised having Coordinates of X = 1,317,661.47 and Y = 393,790.24; thence East 14,758.05 feet along the North line of said Block 23 to its Northeast corner having Coordinates of X = 1,332,419.52 and Y = 393,790.24; thence South 5,108.59 feet along the East line of said Block 23 to a point on the Three Mile Line, as decreed by the Supreme Court of the United States, as determined by a Special Master appointed therein, in litigation styled *United States v. State of Louisiana et al No. 9 Original*, in 1975, having Coordinates of X = 1,332,419.52 and Y = 388,681.65; thence Westerly on a straight line to a point having Coordinates of X = 1,332,310 and Y = 388,694; thence Westerly on a straight line to a point having Coordinates of X = 1,328,041 and Y = 388,886; thence Westerly on a straight line to a point having Coordinates of X = 1,323,345 and Y = 388,897; thence Westerly on a straight line to a point having Coordinates of X = 1,318,623 and Y = 388,814; thence Westerly on a straight line to a point on the West line of said Block 23 having Coordinates of X = 1,317,661.47 and Y = 388,759.14; thence North 5,031.10 feet along the West line of said Block 23 to the point of beginning, containing approximately **1,676.36 acres, LESS AND EXCEPT** that portion thereof, if any, lying seaward of the line three nautical miles from the coast line of Louisiana, as said three mile line has been decreed by the Supreme Court of the United States, as determined by a Special Master appointed therein, in litigation styled **United States v. State of Louisiana et al No. 9 Original**, in 1975, all as more particularly outlined on a plat in the Office of Mineral Resources, Department of Natural Resources. All bearings, distances and coordinates are based on the Louisiana Coordinate System of 1927, (South Zone).

NOTE: The above description of the Tract nominated for lease has been provided and corrected, where required, exclusively by the nomination party. Any mineral lease selected from this Tract and awarded by the Louisiana State Mineral and Energy Board shall be without warranty of any kind, either express, implied, or statutory, including, but not limited to, the implied warranties of merchantability and fitness for a particular purpose. Should the mineral lease awarded by the Louisiana State Mineral and Energy Board be subsequently modified, cancelled or abrogated due to the existence of conflicting leases, operating agreements, private claims or other future obligations or conditions which may affect all or any portion of the leased Tract, it shall not relieve the Lessee of the obligation to pay any bonus due thereon to the Louisiana State Mineral and Energy Board, nor shall the Louisiana State Mineral and Energy Board be obligated to refund any consideration paid by the Lessor prior to such

modification, cancellation, or abrogation, including, but not limited to, bonuses, rentals and royalties.

NOTE: The State of Louisiana does hereby reserve, and this lease shall be subject to, the imprescriptible right of surface use in the nature of a servitude in favor of the Department of Natural Resources, including its Offices and Commissions, for the sole purpose of implementing, constructing, servicing and maintaining approved coastal zone management and/or restoration projects. Utilization of any and all rights derived under this lease by the mineral lessee, its agents, successors or assigns, shall not interfere with nor hinder the reasonable surface use by the Department of Natural Resources, its Offices or Commissions, as herein above reserved.

Applicant: THEOPHILUS OIL, GAS & LAND SERVICES, LLC

Bidder	Cash Payment	Price/Acre	Rental	Oil	Gas	Other

Legend  
11030106  
Blocks

CAMERON PARISH

GULF OF MEXICO

WC0008

WEST CAMERON AREA, REVISED

WC0023

WC0024

0 2,000 Feet



P.O.B.

WC0022



**TRACT 41868 - Portion of Block 24, West Cameron Area, Revised, Cameron Parish, Louisiana**

The beds and bottoms of all water bodies belonging to the State of Louisiana located in Block 24, West Cameron Area, Revised, together with any present lands formed by accretion to the shoreline or islands formed therein, located in Cameron Parish, Louisiana, owned by and not presently under mineral lease as of March 9, 2011, from the State of Louisiana, the geographical area of which is more fully described as follows: Beginning at Northwest corner of Block 24, West Cameron Area, Revised having Coordinates of X = 1,332,419.52 and Y = 393,790.24; thence East 14,758.05 feet along the North line of said Block 24 to its Northeast corner having Coordinates of X = 1,347,177.57 and Y = 393,790.24; thence South 7,023.29 feet along the East line of said Block 24 to a point on the Three Mile Line, as decreed by the Supreme Court of the United States, as determined by a Special Master appointed therein, in litigation styled *United States v. State of Louisiana et al No. 9 Original*, in 1975, having Coordinates of X = 1,347,177.57 and Y = 386,766.95; thence Westerly on a straight line to a point having Coordinates of X = 1,339,580 and Y = 387,874; thence Westerly on a straight line to a point on the West line of said Block 24 having Coordinates of X = 1,332,419.52 and Y = 388,681.65; thence North 5,108.59 feet along the West line of said Block 24 to the point of beginning, containing approximately **2,034.57 acres, LESS AND EXCEPT** that portion thereof, if any, lying seaward of the line three nautical miles from the coast line of Louisiana, as said three mile line has been decreed by the Supreme Court of the United States, as determined by a Special Master appointed therein, in litigation styled **United States v. State of Louisiana et al No. 9 Original**, in 1975, all as more particularly outlined on a plat in the Office of Mineral Resources, Department of Natural Resources. All bearings, distances and coordinates are based on the Louisiana Coordinate System of 1927, (South Zone).

NOTE: The above description of the Tract nominated for lease has been provided and corrected, where required, exclusively by the nomination party. Any mineral lease selected from this Tract and awarded by the Louisiana State Mineral and Energy Board shall be without warranty of any kind, either express, implied, or statutory, including, but not limited to, the implied warranties of merchantability and fitness for a particular purpose. Should the mineral lease awarded by the Louisiana State Mineral and Energy Board be subsequently modified, cancelled or abrogated due to the existence of conflicting leases, operating agreements, private claims or other future obligations or conditions which may affect all or any portion of the leased Tract, it shall not relieve the Lessee of the obligation to pay any bonus due thereon to the Louisiana State Mineral and Energy Board, nor shall the Louisiana State Mineral and Energy Board be obligated to refund any consideration paid by the Lessor prior to such modification, cancellation, or abrogation, including, but not limited to, bonuses, rentals and royalties.

NOTE: The State of Louisiana does hereby reserve, and this lease shall be subject to, the imprescriptible right of surface use in the nature of a servitude in favor of the Department of Natural Resources, including its Offices and Commissions, for the sole purpose of implementing, constructing, servicing and maintaining approved coastal zone management and/or restoration projects. Utilization of any and all rights derived under this lease by the mineral lessee, its agents, successors or assigns, shall not interfere with nor hinder the reasonable surface use by the Department of Natural Resources, its Offices or Commissions, as herein above reserved.

Applicant: THEOPHILUS OIL, GAS & LAND SERVICES, LLC

Bidder	Cash Payment	Price/Acre	Rental	Oil	Gas	Other

Legend  
11030109  
Blocks

CAMERON PARISH

WEST CAMERON AREA, REVISED

WC0007

GULF OF MEXICO

WC0024

P.O.B.



**TRACT 41869 - Cameron Parish, Louisiana**

All lands, including lands added by accretion and reliction and lands now or formerly constituting the beds and bottoms of all water bodies of every nature and description, owned by and not presently under mineral lease as of March 9, 2011 from the State of Louisiana, situated in Cameron Parish, Louisiana, and being more fully described as follows: Beginning at the Northwest corner of Block 1, East Cameron Area, Revised, to a point on the Louisiana Coastline, as decreed by the Supreme Court of the United States, as determined by a Special Master appointed therein, in litigation styled *United States v. State of Louisiana et al No. 9 Original*, in 1975, having Coordinates of X = 1,465,241.95 and Y = 389,642.21; thence Southeasterly on a straight line to a point having Coordinates of X = 1,467,685 and Y = 388,820; thence Southeasterly on a straight line to a point having Coordinates of X = 1,470,502.77 and Y = 387,686.55; thence South 27 degrees 38 minutes 25 seconds 76.5 feet to a point on the Northwest corner of State Lease No. 1170, as amended having Coordinates of X = 1,470,467.28 and Y = 387,618.78; thence along the Northwest boundary of said State Lease No. 1170 the following courses and distances: South 29 degrees 25 minutes 04 seconds West 1494.64 feet to a corner having Coordinates of X = 1,469,733.15 and Y = 386,316.86, South 16 degrees 34 minutes 57 seconds West 3,151.93 feet to a corner having Coordinates of X = 1,468,833.61 and Y = 383,296.02, South 41 degrees 48 minutes 27 seconds West 1,088.27 feet to a corner having Coordinates of X = 1,468,108.14 and Y = 382,484.84, South 28 degrees 42 minutes 39 seconds West 1,578.41 feet to a corner having Coordinates of X = 1,467,349.89 and Y = 381,100.49 and South 45 degrees 32 minutes 38 seconds West 2,953.18 feet to a corner located on the West line of said Block 1 having Coordinates of X = 1,465,241.95 and Y = 379,032.19; thence North 10,610.02 feet along the West line of said Block 1 to the point of beginning, containing approximately **718 acres**, all as more particularly outlined on a plat on file in the Office of Mineral Resources, Department of Natural Resources. All bearings, distances and coordinates are based on Louisiana Coordinate System of 1927, (North or South Zone), where applicable.

NOTE: The above description of the Tract nominated for lease has been provided and corrected, where required, exclusively by the nomination party. Any mineral lease selected from this Tract and awarded by the Louisiana State Mineral and Energy Board shall be without warranty of any kind, either express, implied, or statutory, including, but not limited to, the implied warranties of merchantability and fitness for a particular purpose. Should the mineral lease awarded by the Louisiana State Mineral and Energy Board be subsequently modified, cancelled or abrogated due to the existence of conflicting leases, operating agreements, private claims or other future obligations or conditions which may affect all or any portion of the leased Tract, it shall not relieve the Lessee of the obligation to pay any bonus due thereon to the Louisiana State Mineral and Energy Board, nor shall the Louisiana State Mineral and Energy Board be obligated to refund any consideration paid by the Lessor prior to such

modification, cancellation, or abrogation, including, but not limited to, bonuses, rentals and royalties.

NOTE: The State of Louisiana does hereby reserve, and this lease shall be subject to, the imprescriptible right of surface use in the nature of a servitude in favor of the Department of Natural Resources, including its Offices and Commissions, for the sole purpose of implementing, constructing, servicing and maintaining approved coastal zone management and/or restoration projects. Utilization of any and all rights derived under this lease by the mineral lessee, its agents, successors or assigns, shall not interfere with nor hinder the reasonable surface use by the Department of Natural Resources, its Offices or Commissions, as herein above reserved.

Applicant: THEOPHILUS OIL, GAS & LAND SERVICES, LLC

Bidder	Cash Payment	Price/Acre	Rental	Oil	Gas	Other

**Legend**

- 11030140
- Blocks
- Active Leases

CAMERON PARISH

P.O.B.



WC0032

GULF OF MEXICO

WEST CAMERON AREA, REVISED

WC0033

EC0001

SL 1170

EAST CAMERON AREA, REVISED