

TRACT 40852 - Portion of Block 49, Breton Sound Area, Plaquemines Parish, Louisiana

All of the lands now or formerly constituting the beds and bottoms of all water bodies of every nature and description as to which title is vested in the State of Louisiana, together with all islands arising therein and other lands formed by accretion or by reliction, where allowed by law, excepting tax adjudicated lands, and not presently under mineral lease on March 11, 2009, situated in Plaquemines Parish, Louisiana, and more particularly described as follows: Beginning at the Northwest corner of Block 49, Breton Sound Area, having Coordinates of X = 2,635,350.00 and Y = 292,830.00; thence East 7,375.00 feet along the North line of said Block 49 to a point having Coordinates of X = 2,642,725.00 and Y = 292,830.00; thence South 14,750.00 feet to a point on the South line of said Block 49 having Coordinates of X = 2,642,725.00 and Y = 278,080.00; thence West 7,375.00 feet along the South line of said Block 49 to its Southwest corner having Coordinates of X = 2,635,350.00 and Y = 278,080.00; thence North 3,920.00 feet along the West line of said Block 49 to the Southwest corner of State Lease No. 18164 having Coordinates of X = 2,635,350.00 and Y = 282,000.00; thence along the boundary of said State Lease No. 18164 the following courses: East 1,800.00 feet, North 2,587.00 feet and West 1,800.00 feet to its Northwest corner also being a point on the West line of said Block 49 having Coordinates of X = 2,635,350.00 and Y = 284,587.00; thence North 8,243.00 feet along the West line of said Block 49 to the point of beginning, containing approximately **2,390.37 acres**, all as more particularly outlined on a plat on file in the Office of Mineral Resources, Department of Natural Resources. All bearings, distances and coordinates are based on Louisiana Coordinate System of 1927, (North or South Zone), where applicable.

NOTE: The above description of the Tract nominated for lease has been provided and corrected, where required, exclusively by the nomination party. Any mineral lease selected from this Tract and awarded by the Louisiana State Mineral Board shall be without warranty of any kind, either express, implied, or statutory, including, but not limited to, the implied warranties of merchantability and fitness for a particular purpose. Should the mineral lease awarded by the Louisiana State Mineral Board be subsequently modified, cancelled or abrogated due to the existence of conflicting leases, operating agreements, private claims or other future obligations or conditions which may affect all or any portion of the leased Tract, it shall not relieve the Lessee of the obligation to pay any bonus due thereon to the Louisiana State Mineral Board, nor shall the Louisiana State Mineral Board be obligated to refund any consideration paid by the Lessor prior to such modification, cancellation, or abrogation, including, but not limited to, bonuses, rentals and royalties.

NOTE: The State of Louisiana does hereby reserve, and this lease shall be subject to, the imprescriptible right of surface use in the nature of a servitude in favor of the Department of Natural Resources, including its Offices and Commissions, for the sole purpose of implementing, constructing, servicing and maintaining approved coastal zone management

and/or restoration projects. Utilization of any and all rights derived under this lease by the mineral lessee, its agents, successors or assigns, shall not interfere with nor hinder the reasonable surface use by the Department of Natural Resources, its Offices or Commissions, as herein above reserved.

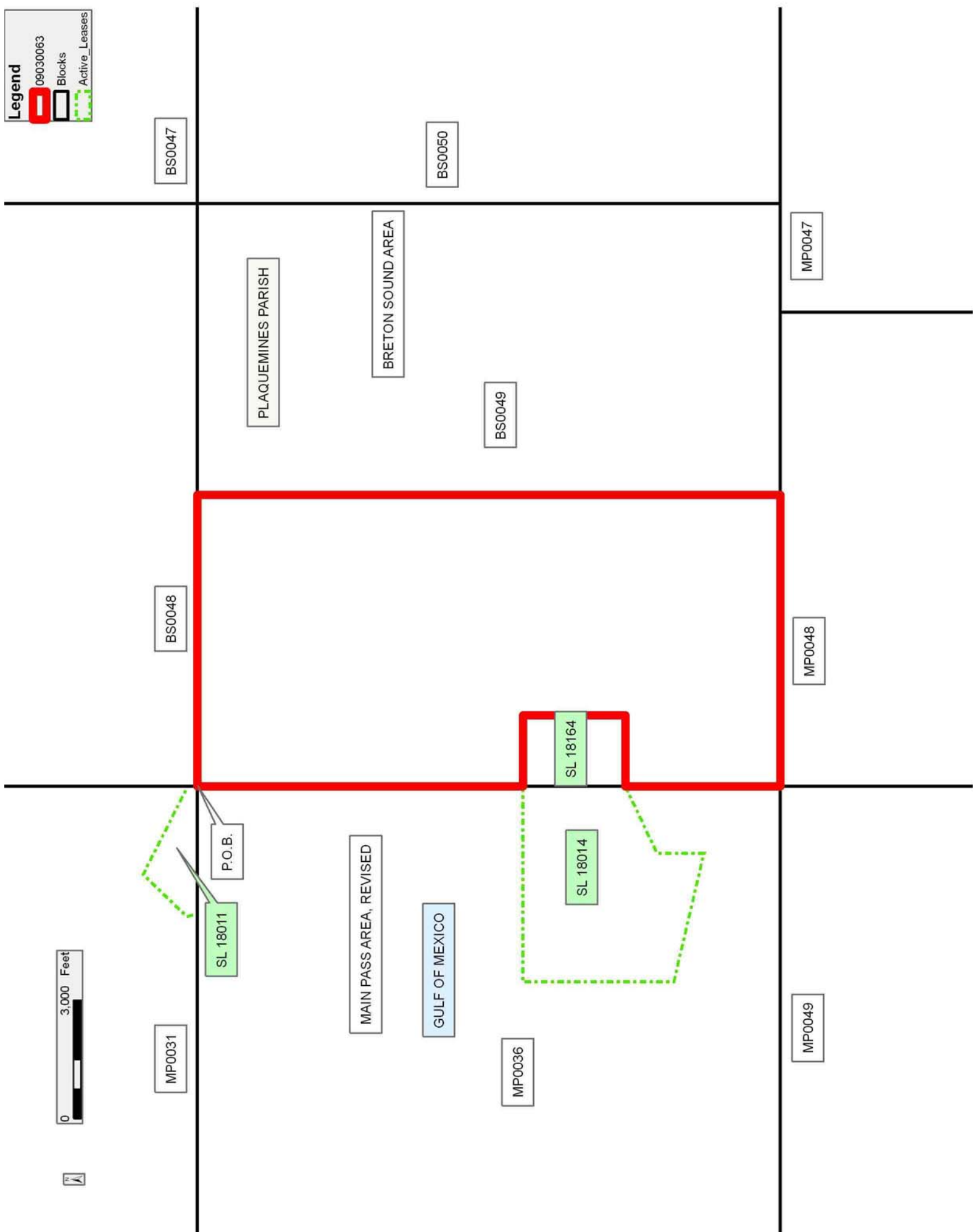
NOTE: The Department of Wildlife and Fisheries has designated certain areas in the coastal waters of the State of Louisiana as Oyster Seed Bed Areas. The exact location of those Seed Bed Areas must be obtained from the Department of Wildlife and Fisheries and any work done under a mineral lease from the State of Louisiana may necessarily be conducted in conformity with the rules and regulations promulgated by the said Department of Wildlife and Fisheries for Oyster Seed Bed Areas.

Applicant: HAROLD J. ANDERSON, INC.

Bidder	Cash Payment	Price/Acre	Rental	Oil	Gas	Other

Legend

- 09030063
- Blocks
- Active_Leases



TRACT 40853 - Portion of Block 49, Breton Sound Area, Plaquemines Parish, Louisiana

All of the lands now or formerly constituting the beds and bottoms of all water bodies of every nature and description as to which title is vested in the State of Louisiana, together with all islands arising therein and other lands formed by accretion or by reliction, where allowed by law, excepting tax adjudicated lands, and not presently under mineral lease on March 11, 2009, situated in Plaquemines Parish, Louisiana, and more particularly described as follows: Beginning at a point on the North line of Block 49, Breton Sound Area, having Coordinates of X = 2,642,725.00 and Y = 292,830.00; thence East 7,375.00 feet along the North line of said Block 49 to its Northeast corner having Coordinates of X = 2,650,100.00 and Y = 292,830.00; thence South 14,750.00 feet along the East line of said Block 49 to its Southeast corner having Coordinates of X = 2,650,100.00 and Y = 278,080.00; thence West 7,375.00 feet along the South line of said Block 49 to a point having Coordinates of X = 2,642,725.00 and Y = 278,080.00; thence North 14,750.00 feet to the point of beginning, containing approximately **2,497.27 acres**, all as more particularly outlined on a plat on file in the Office of Mineral Resources, Department of Natural Resources. All bearings, distances and coordinates are based on Louisiana Coordinate System of 1927, (North or South Zone), where applicable.

NOTE: The above description of the Tract nominated for lease has been provided and corrected, where required, exclusively by the nomination party. Any mineral lease selected from this Tract and awarded by the Louisiana State Mineral Board shall be without warranty of any kind, either express, implied, or statutory, including, but not limited to, the implied warranties of merchantability and fitness for a particular purpose. Should the mineral lease awarded by the Louisiana State Mineral Board be subsequently modified, cancelled or abrogated due to the existence of conflicting leases, operating agreements, private claims or other future obligations or conditions which may affect all or any portion of the leased Tract, it shall not relieve the Lessee of the obligation to pay any bonus due thereon to the Louisiana State Mineral Board, nor shall the Louisiana State Mineral Board be obligated to refund any consideration paid by the Lessor prior to such modification, cancellation, or abrogation, including, but not limited to, bonuses, rentals and royalties.

NOTE: The State of Louisiana does hereby reserve, and this lease shall be subject to, the imprescriptible right of surface use in the nature of a servitude in favor of the Department of Natural Resources, including its Offices and Commissions, for the sole purpose of implementing, constructing, servicing and maintaining approved coastal zone management and/or restoration projects. Utilization of any and all rights derived under this lease by the mineral lessee, its agents, successors or assigns, shall not interfere with nor hinder the reasonable surface use by the Department of Natural Resources, its Offices or Commissions, as herein above reserved.

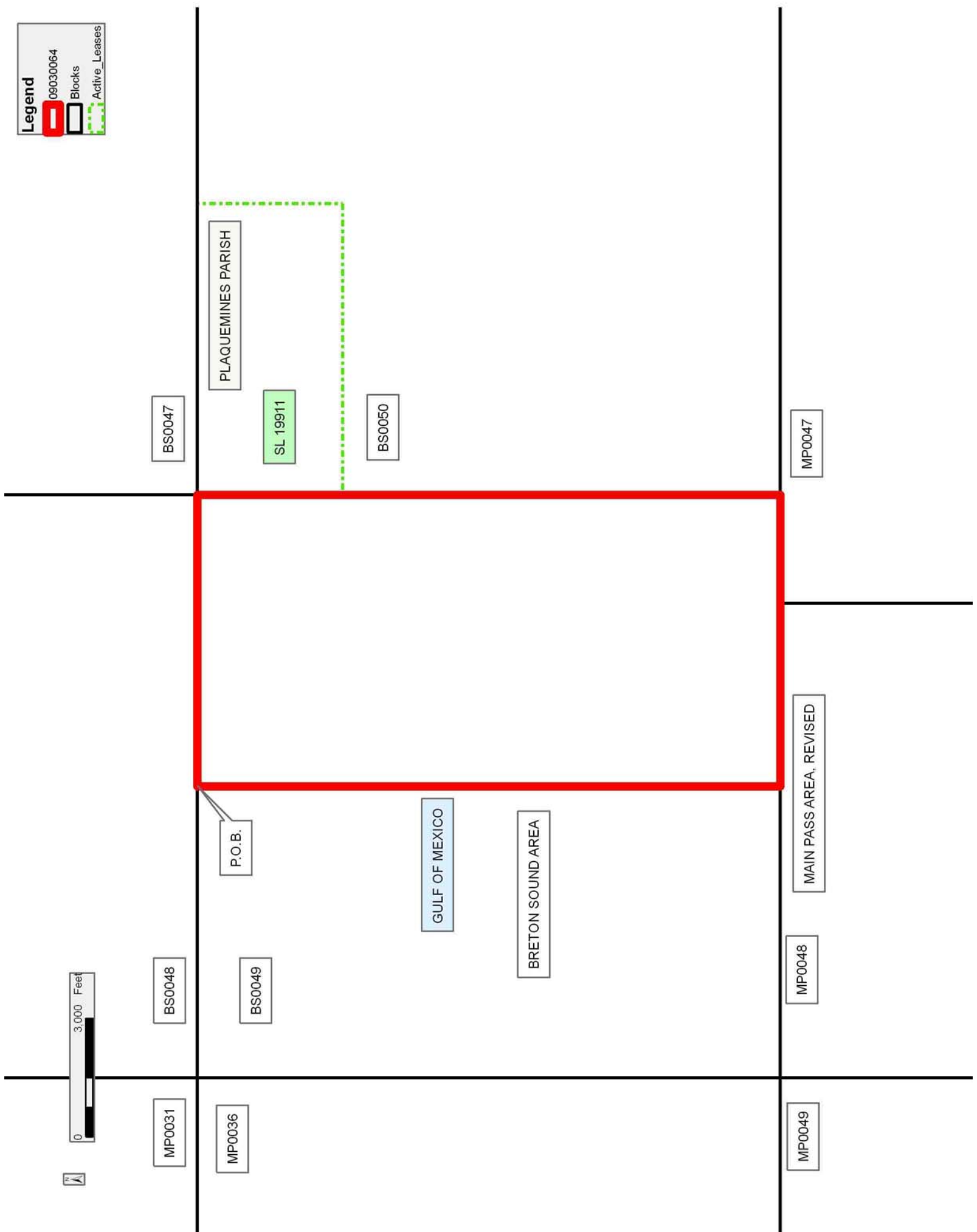
NOTE: The Department of Wildlife and Fisheries has designated certain areas in the coastal waters of the State of Louisiana as Oyster Seed Bed Areas. The exact location of those Seed Bed Areas must be obtained from the Department of Wildlife and Fisheries and any work done under a mineral lease from the State of Louisiana may necessarily be conducted in conformity with the rules and regulations promulgated by the said Department of Wildlife and Fisheries for Oyster Seed Bed Areas.

Applicant: HAROLD J. ANDERSON, INC.

Bidder	Cash Payment	Price/Acre	Rental	Oil	Gas	Other

Legend

- 09030064
- Blocks
- Active_Leases



TRACT 40854 - Portion of Block 51, Breton Sound Area, Plaquemines Parish, Louisiana

All of the lands now or formerly constituting the beds and bottoms of all water bodies of every nature and description as to which title is vested in the State of Louisiana, together with all islands arising therein and other lands formed by accretion or by reliction, where allowed by law, excepting tax adjudicated lands, and not presently under mineral lease on March 11, 2009, situated in Plaquemines Parish, Louisiana, and more particularly described as follows: Beginning at the Northwest corner of Block 51, Breton Sound Area, having Coordinates of X = 2,664,850.00 and Y = 292,830.00; thence East 1,500.00 feet along the North line of said Block 51 to the Northwest corner of State Lease No. 19081 having Coordinates of X = 2,666,350.00 and Y = 292,830.00; thence along the boundary of said State Lease No. 19081 the following courses: South 19 degrees 39 minutes 14 seconds East 2,973.21 feet, East 1,700.00 feet and North 10 degrees 07 minutes 29 seconds West 2,844.29 feet to its Northeast corner also being a point on the North line of said Block 51 having Coordinates of X = 2,668,550.00 and Y = 292,830.00; thence East 3,675.00 feet along the North line of said Block 51 to a point having Coordinates of X = 2,672,225.00 and Y = 292,830.00; thence South 4,894.65 feet to a point on the Northern boundary of State Lease No. 16890 having Coordinates of X = 2,672,225.00 and Y = 287,935.35; thence along the boundary of said State Lease No. 16890 the following courses: South 73 degrees 14 minutes 30 seconds West 1,717.96 feet, South 05 degrees 15 minutes 21 seconds East 3,384.23 feet and South 87 degrees 28 minutes 59 seconds East 1,336.29 feet to a point on its Southern boundary having Coordinates of X = 2,672,225.00 and Y = 284,011.32; thence South 5,931.32 feet to a point on the South line of said Block 51 having Coordinates of X = 2,672,225.00 and Y = 278,080.00; thence West 7,375.00 feet along the South line of said Block 51 to its Southwest corner having Coordinates of X = 2,664,850.00 and Y = 278,080.00; thence North 14,750 feet along the West line of said Block 51 to the point of beginning, containing approximately **2,246.40 acres**, all as more particularly outlined on a plat on file in the Office of Mineral Resources, Department of Natural Resources. All bearings, distances and coordinates are based on Louisiana Coordinate System of 1927, (North or South Zone), where applicable.

NOTE: The above description of the Tract nominated for lease has been provided and corrected, where required, exclusively by the nomination party. Any mineral lease selected from this Tract and awarded by the Louisiana State Mineral Board shall be without warranty of any kind, either express, implied, or statutory, including, but not limited to, the implied warranties of merchantability and fitness for a particular purpose. Should the mineral lease awarded by the Louisiana State Mineral Board be subsequently modified, cancelled or abrogated due to the existence of conflicting leases, operating agreements, private claims or other future obligations or conditions which may affect all or any portion of the leased Tract, it shall not relieve the Lessee of the obligation to pay any bonus due thereon to the Louisiana State Mineral Board, nor shall

the Louisiana State Mineral Board be obligated to refund any consideration paid by the Lessor prior to such modification, cancellation, or abrogation, including, but not limited to, bonuses, rentals and royalties.

NOTE: The State of Louisiana does hereby reserve, and this lease shall be subject to, the imprescriptible right of surface use in the nature of a servitude in favor of the Department of Natural Resources, including its Offices and Commissions, for the sole purpose of implementing, constructing, servicing and maintaining approved coastal zone management and/or restoration projects. Utilization of any and all rights derived under this lease by the mineral lessee, its agents, successors or assigns, shall not interfere with nor hinder the reasonable surface use by the Department of Natural Resources, its Offices or Commissions, as herein above reserved.

NOTE: The Department of Wildlife and Fisheries has designated certain areas in the coastal waters of the State of Louisiana as Oyster Seed Bed Areas. The exact location of those Seed Bed Areas must be obtained from the Department of Wildlife and Fisheries and any work done under a mineral lease from the State of Louisiana may necessarily be conducted in conformity with the rules and regulations promulgated by the said Department of Wildlife and Fisheries for Oyster Seed Bed Areas.

Applicant: HAROLD J. ANDERSON, INC.

Bidder	Cash Payment	Price/Acre	Rental	Oil	Gas	Other

Legend

- 09030066
- Blocks
- Active_Leases

BS0045

BS0052

MP0045

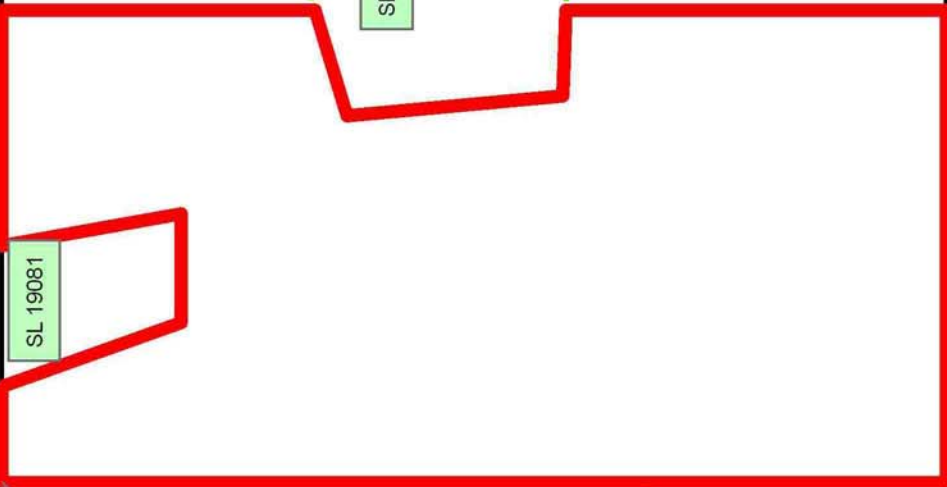
BS0046

GULF OF MEXICO

BS0051

SL 16890

SL 2726



SL 19081

MP0046

BS0047

P.O.B.

PLAQUEMINES PARISH

BRETON SOUND AREA

SL 19912

MAIN PASS AREA, REVISED

BS0050

MP0047



TRACT 40855 - Portion of Block 50, Breton Sound Area, Plaquemines Parish, Louisiana

All of the lands now or formerly constituting the beds and bottoms of all water bodies of every nature and description as to which title is vested in the State of Louisiana, together with all islands arising therein and other lands formed by accretion or by reliction, where allowed by law, excepting tax adjudicated lands, and not presently under mineral lease on March 11, 2009, situated in Plaquemines Parish, Louisiana, and more particularly described as follows: Beginning at a point on the West line of Block 50, Breton Sound Area, also being the Southwest corner of State Lease No. 19911 having Coordinates of X = 2,650,100.00 and Y = 289,142.50; thence East 7,375.00 feet along the South boundary of said State Lease No. 19911 to its Southeast corner, also being a point on the West boundary of State Lease No. 19912 having Coordinates of X = 2,657,475.00 and Y = 289,142.50; thence along the boundary of said State Lease No. 19912 the following courses: South 2,892.50 feet; East 295.00 feet; South 01 degrees 35 minutes 39 seconds East 5,392.09 feet; East 3,505.00 feet; North 3,415.00 feet; East 2,375.00 feet; South 1,475.00 feet; East 1,000.00 feet; North 3,450.00 feet and East 50.00 feet to its Easternmost Southeast corner, also being a point on the East line of said Block 50 having Coordinates of X = 2,664,850.00 and Y = 286,250.00; thence South 8,170.00 feet along the East line of said Block 50 to its Southeast corner having Coordinates of X = 2,664,850.00 and Y = 278,080.00; thence West 10,500.00 feet along the South line of said Block 50 to the Southeast corner of State Lease No. 16393 having Coordinates of X = 2,654,350.00 and Y = 278,080.00; thence along the boundary of said State Lease No. 16393 the following courses: North 2,000.00 feet; West 3,800.00 feet and South 2,000.00 feet to its Southwest corner also being a point on the South line of said Block 50 having Coordinates of X = 2,650,550.00 and Y = 278,080.00; thence West 450.00 feet along the South line of said Block 50 to its Southwest corner having Coordinates of X = 2,650,100.00 and Y = 278,080.00; thence North 11,062.50 feet along the West line of said Block 50 to the point of beginning, containing approximately **2,451.86 acres**, all as more particularly outlined on a plat on file in the Office of Mineral Resources, Department of Natural Resources. All bearings, distances and coordinates are based on Louisiana Coordinate System of 1927, (North or South Zone), where applicable.

NOTE: The above description of the Tract nominated for lease has been provided and corrected, where required, exclusively by the nomination party. Any mineral lease selected from this Tract and awarded by the Louisiana State Mineral Board shall be without warranty of any kind, either express, implied, or statutory, including, but not limited to, the implied warranties of merchantability and fitness for a particular purpose. Should the mineral lease awarded by the Louisiana State Mineral Board be subsequently modified, cancelled or abrogated due to the existence of conflicting leases, operating agreements, private claims or other future obligations or conditions which may affect all or any portion of the leased Tract, it shall not relieve the Lessee of the obligation to

pay any bonus due thereon to the Louisiana State Mineral Board, nor shall the Louisiana State Mineral Board be obligated to refund any consideration paid by the Lessor prior to such modification, cancellation, or abrogation, including, but not limited to, bonuses, rentals and royalties.

NOTE: The State of Louisiana does hereby reserve, and this lease shall be subject to, the imprescriptible right of surface use in the nature of a servitude in favor of the Department of Natural Resources, including its Offices and Commissions, for the sole purpose of implementing, constructing, servicing and maintaining approved coastal zone management and/or restoration projects. Utilization of any and all rights derived under this lease by the mineral lessee, its agents, successors or assigns, shall not interfere with nor hinder the reasonable surface use by the Department of Natural Resources, its Offices or Commissions, as herein above reserved.

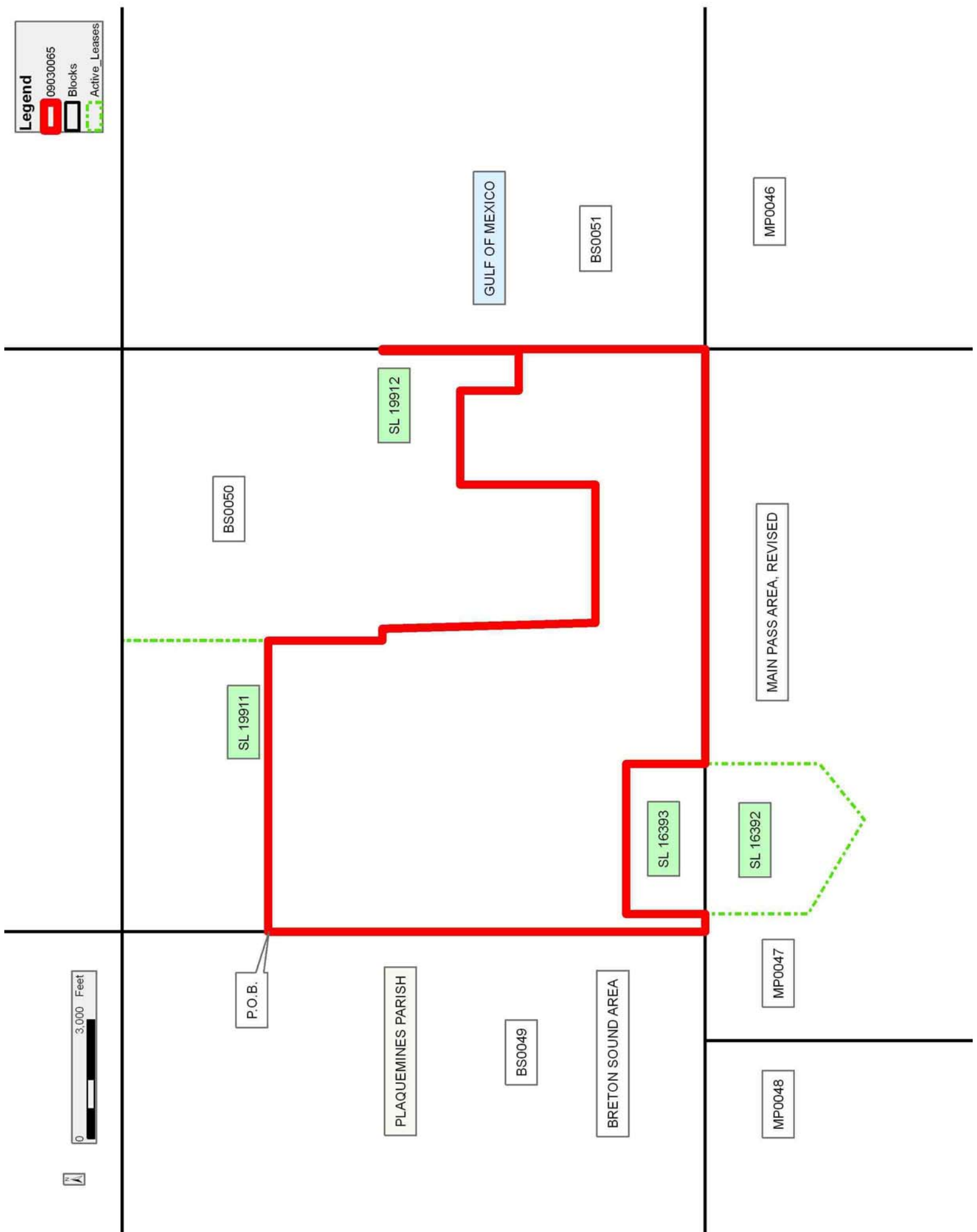
NOTE: The Department of Wildlife and Fisheries has designated certain areas in the coastal waters of the State of Louisiana as Oyster Seed Bed Areas. The exact location of those Seed Bed Areas must be obtained from the Department of Wildlife and Fisheries and any work done under a mineral lease from the State of Louisiana may necessarily be conducted in conformity with the rules and regulations promulgated by the said Department of Wildlife and Fisheries for Oyster Seed Bed Areas.

Applicant: HAROLD J. ANDERSON, INC.

Bidder	Cash Payment	Price/Acre	Rental	Oil	Gas	Other

Legend

- 09030065
- Blocks
- Active_Leases



TRACT 40856 - Portion of Blocks 48, and 49, Main Pass Area, Revised, Plaquemines Parish, Louisiana

All of the lands now or formerly constituting the beds and bottoms of all water bodies of every nature and description as to which title is vested in the State of Louisiana, together with all islands arising therein and other lands formed by accretion or by reliction, where allowed by law, excepting tax adjudicated lands, and not presently under mineral lease on March 11, 2009, situated in Plaquemines Parish, Louisiana, and more particularly described as follows: Beginning at a point lying within Block 49, Main Pass Area, Revised having Coordinates of X = 2,633,000.00 and Y = 273,538.93; thence East 12,351.00 feet to a point lying within Block 48, Main Pass Area, Revised having Coordinates of X = 2,645,351.00 and Y = 273,538.93; thence South 7,508.93 feet to the Northwest corner of State Lease No. 19489 having Coordinates of X = 2,645,351.00 and Y = 266,030.00; thence South 2,680.00 feet along the West boundary of said State Lease No. 19489 to its Southwest corner having Coordinates of X = 2,645,351.00 and Y = 263,350.00; thence South 363.14 feet to a point having Coordinates of X = 2,645,351.00 and Y = 262,986.86; thence West approximately 3,221 feet to a point on the boundary of the Price Case having a Coordinate of Y = 262,986.86; thence Northwesterly, Southwesterly, Northeasterly, Southeasterly, Westerly and Southwesterly along the boundary of said Price Case to a point of intersection with a North-South line having a Coordinate of X = 2,633,000.00; thence North approximately 8,739 feet along said line to the point of beginning, **LESS AND EXCEPT** that portion, if any, of the Price Case that may lie within the above described tract, containing approximately **2,356 acres**, all as more particularly outlined on a plat on file in the Office of Mineral Resources, Department of Natural Resources. All bearings, distances and coordinates are based on Louisiana Coordinate System of 1927, (North or South Zone), where applicable.

NOTE: The above description of the Tract nominated for lease has been provided and corrected, where required, exclusively by the nomination party. Any mineral lease selected from this Tract and awarded by the Louisiana State Mineral Board shall be without warranty of any kind, either express, implied, or statutory, including, but not limited to, the implied warranties of merchantability and fitness for a particular purpose. Should the mineral lease awarded by the Louisiana State Mineral Board be subsequently modified, cancelled or abrogated due to the existence of conflicting leases, operating agreements, private claims or other future obligations or conditions which may affect all or any portion of the leased Tract, it shall not relieve the Lessee of the obligation to pay any bonus due thereon to the Louisiana State Mineral Board, nor shall the Louisiana State Mineral Board be obligated to refund any consideration paid by the Lessor prior to such modification, cancellation, or abrogation, including, but not limited to, bonuses, rentals and royalties.

NOTE: The State of Louisiana does hereby reserve, and this lease shall be subject to, the imprescriptible right of surface use in the nature of a servitude in favor of the Department of Natural Resources, including its

Offices and Commissions, for the sole purpose of implementing, constructing, servicing and maintaining approved coastal zone management and/or restoration projects. Utilization of any and all rights derived under this lease by the mineral lessee, its agents, successors or assigns, shall not interfere with nor hinder the reasonable surface use by the Department of Natural Resources, its Offices or Commissions, as herein above reserved.

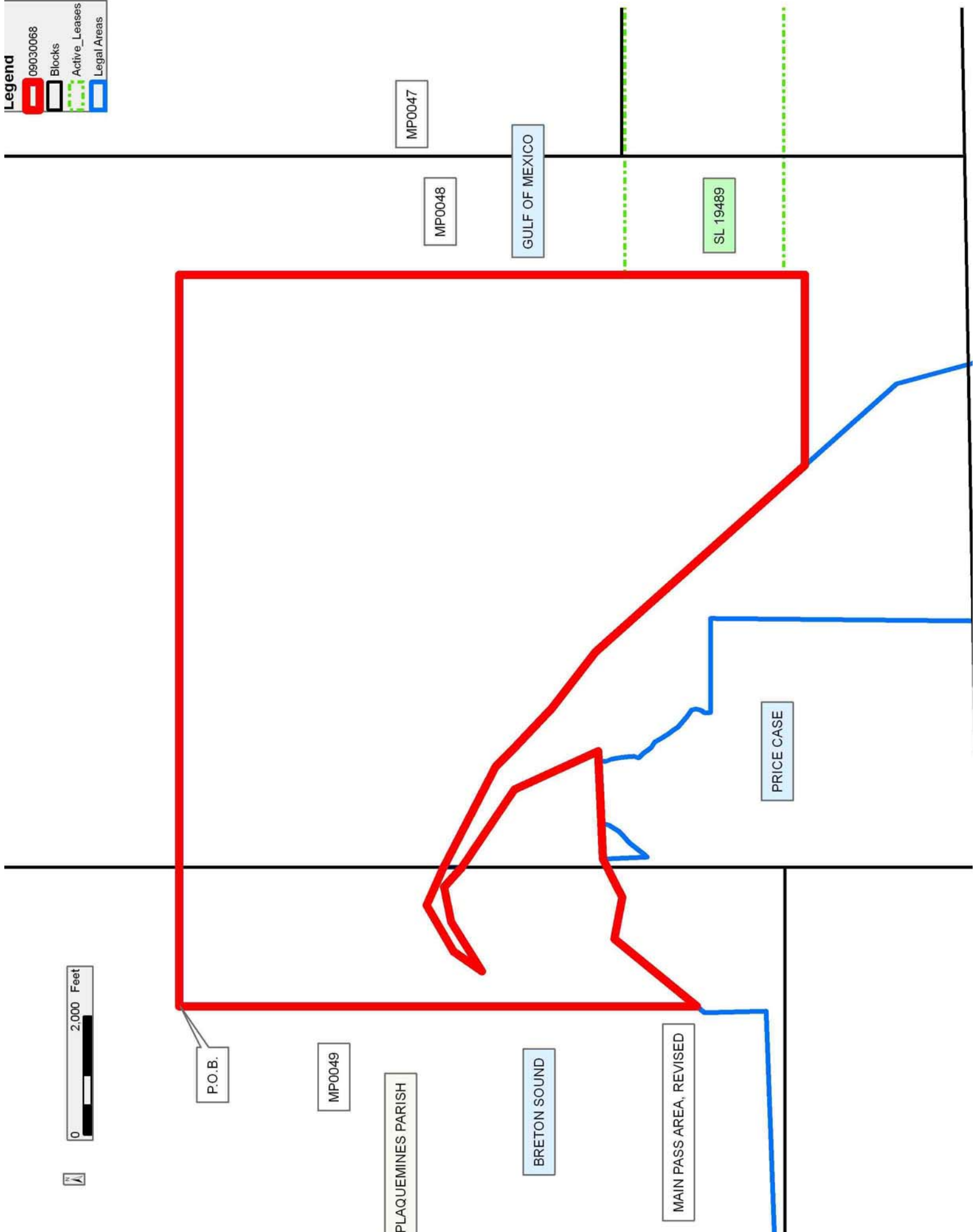
NOTE: The Department of Wildlife and Fisheries has designated certain areas in the coastal waters of the State of Louisiana as Oyster Seed Bed Areas. The exact location of those Seed Bed Areas must be obtained from the Department of Wildlife and Fisheries and any work done under a mineral lease from the State of Louisiana may necessarily be conducted in conformity with the rules and regulations promulgated by the said Department of Wildlife and Fisheries for Oyster Seed Bed Areas.

Applicant: THEOPHILUS OIL, GAS & LAND SERVICES, LLC

Bidder	Cash Payment	Price/Acre	Rental	Oil	Gas	Other

Legend

- 09030068
- Blocks
- Active_Leases
- Legal Areas



TRACT 40857 - Portion of Block 48, Main Pass Area, Revised, Plaquemines Parish, Louisiana

All of the lands now or formerly constituting the beds and bottoms of all water bodies of every nature and description as to which title is vested in the State of Louisiana, together with all islands arising therein and other lands formed by accretion or by reliction, where allowed by law, excepting tax adjudicated lands, and not presently under mineral lease on March 11, 2009, situated in Plaquemines Parish, Louisiana, and more particularly described as follows: All that portion of Tract C-2 of the Price Case being more particularly described as: Beginning at a point located within said Tract C 2 having Coordinates of X = 2,641,180.00 and Y = 263,302.00; thence South 34 degrees 11 minutes 43 seconds East 381.01 feet to a point having Coordinates of X = 2,641,394.13 and Y = 262,986.86; thence East 738.78 feet to a point on the Eastern boundary of said Tract C 2 having Coordinates of X = 2,642,132.91 and Y = 262,986.86; thence along the calls of the boundary of said Tract C 2 the following: North 41 degrees 40 minutes West 4,741.74 feet; North 52 degrees 45 minutes West 1,195 feet; North 46 degrees 15 minutes West 1,381.75 feet; North 62 degrees 35 minutes West 1,894 feet to a point the Lambert Coordinates of which are X = 2,635,350.00 and Y = 269,080.00; South 300 feet; South 56 degrees 00 minutes East 1,575 feet; South 24 degrees 35 minutes East 1,567 feet; South 87 degrees 51 minutes 33 seconds West to a point on the shore of an island; Southeasterly along said shoreline to a line the Y Lambert Coordinate of which is Y = 264,580.00; East approximately 1,600 feet to a point having Lambert Coordinates of X = 2,639,550.00 and Y = 264,580.00 and South 1,278.00 feet to a point having Coordinates of X = 2,639,500.00 and Y = 263,302.00; thence East 1,630.00 feet to the point of beginning, containing approximately 214 gross acres and approximately **128.4 net acres**, all as more particularly outlined on a plat on file in the Office of Mineral Resources, Department of Natural Resources. All bearings, distances and coordinates are based on Louisiana Coordinate System of 1927, (North or South Zone), where applicable.

NOTE: The above description of the Tract nominated for lease has been provided and corrected, where required, exclusively by the nomination party. Any mineral lease selected from this Tract and awarded by the Louisiana State Mineral Board shall be without warranty of any kind, either express, implied, or statutory, including, but not limited to, the implied warranties of merchantability and fitness for a particular purpose. Should the mineral lease awarded by the Louisiana State Mineral Board be subsequently modified, cancelled or abrogated due to the existence of conflicting leases, operating agreements, private claims or other future obligations or conditions which may affect all or any portion of the leased Tract, it shall not relieve the Lessee of the obligation to pay any bonus due thereon to the Louisiana State Mineral Board, nor shall the Louisiana State Mineral Board be obligated to refund any consideration paid by the Lessor prior to such modification, cancellation, or abrogation, including, but not limited to, bonuses, rentals and royalties.

NOTE: The State of Louisiana does hereby reserve, and this lease shall be subject to, the imprescriptible right of surface use in the nature of a servitude in favor of the Department of Natural Resources, including its Offices and Commissions, for the sole purpose of implementing, constructing, servicing and maintaining approved coastal zone management and/or restoration projects. Utilization of any and all rights derived under this lease by the mineral lessee, its agents, successors or assigns, shall not interfere with nor hinder the reasonable surface use by the Department of Natural Resources, its Offices or Commissions, as herein above reserved.

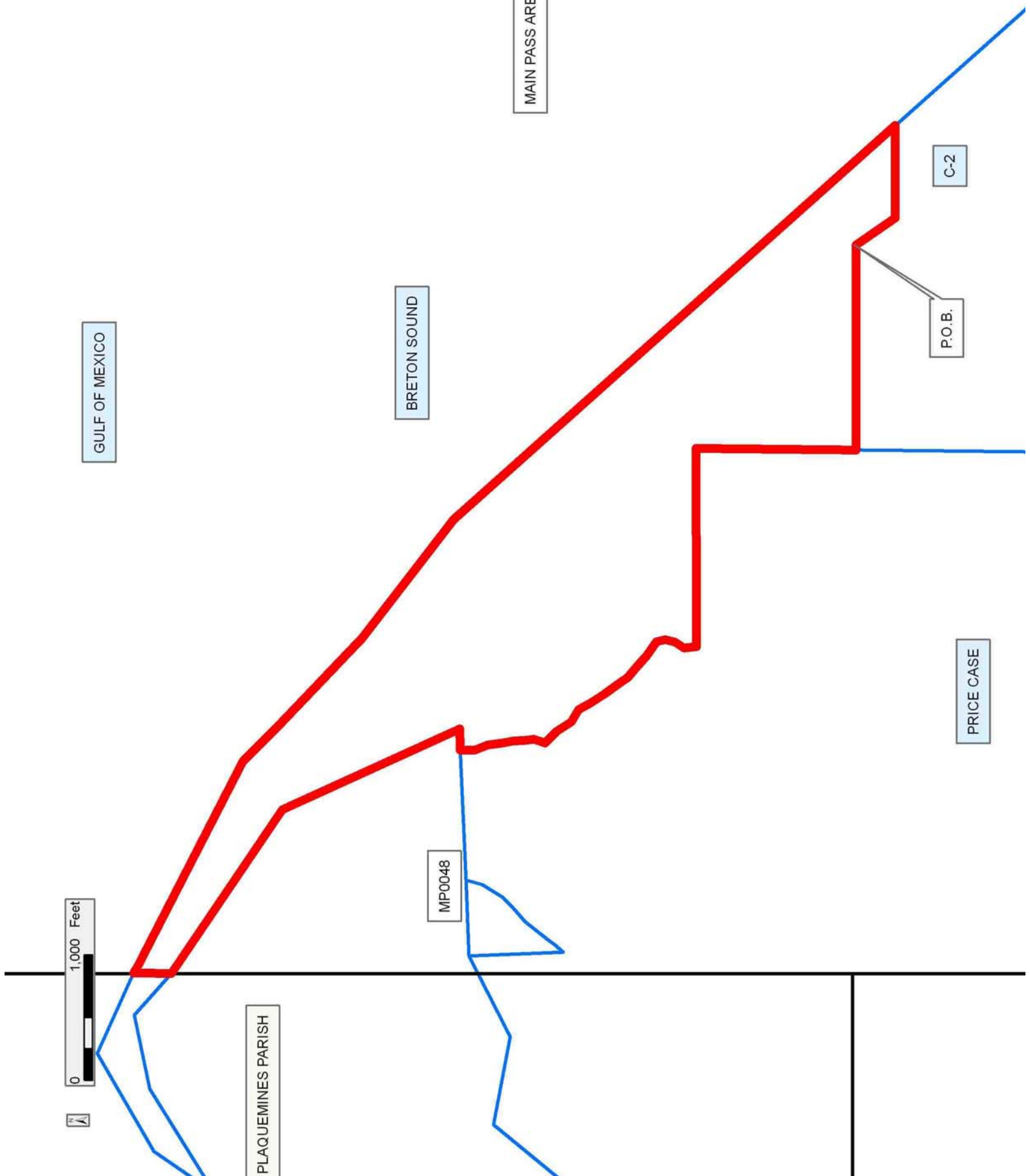
NOTE: The Department of Wildlife and Fisheries has designated certain areas in the coastal waters of the State of Louisiana as Oyster Seed Bed Areas. The exact location of those Seed Bed Areas must be obtained from the Department of Wildlife and Fisheries and any work done under a mineral lease from the State of Louisiana may necessarily be conducted in conformity with the rules and regulations promulgated by the said Department of Wildlife and Fisheries for Oyster Seed Bed Areas.

Applicant: THEOPHILUS OIL, GAS & LAND SERVICES, LLC

Bidder	Cash Payment	Price/Acre	Rental	Oil	Gas	Other

Legend

- 09030088
- Blocks
- Legal Areas



Office of Mineral Resources, Acres: 128.4 Tract Number: 40857

TRACT 40858 - Portion of Blocks 46, and 53, Main Pass Area, Revised, Plaquemines Parish, Louisiana

All of the lands now or formerly constituting the beds and bottoms of all water bodies of every nature and description as to which title is vested in the State of Louisiana, together with all islands arising therein and other lands formed by accretion or by reliction, where allowed by law, excepting tax adjudicated lands, and not presently under mineral lease on March 11, 2009, situated in Plaquemines Parish, Louisiana, and more particularly described as follows: Beginning at a point having Coordinates of X = 2,679,600.00 and Y = 263,330.00, said point being the Southeast corner of Block 46, Main Pass Area, Revised, said point also being the Northeast corner of Block 53, Main Pass Area, Revised; thence West 1,545.00 feet along the line common to said Blocks 46 and 53, Main Pass Area, Revised, to a point having Coordinates of X = 2,678,055.00 and Y = 263,330.00; thence West 3,358.66 feet along said line common to said Blocks 46 and Block 53, Main Pass Area, Revised, to a point having Coordinates of X = 2,674,696.34 and Y = 263,330.00; thence South 27 degrees 02 minutes 47 seconds West 1,718.32 feet to a point having Coordinates of X = 2,673,915.00 and Y = 261,799.60; thence South 74 degrees 56 minutes 32 seconds West 4,499.99 feet to a point having Coordinates of X = 2,669,569.52 and Y = 260,630.54; thence North 15 degrees 03 minutes 28 seconds West 2,795.45 feet to a point having Coordinates of X = 2,668,843.28 and Y = 263,330.00, said point being on said line common to said Blocks 46 and Block 53, Main Pass Area, Revised; thence West 2,046.28 feet along said line common to said Blocks 46 and Block 53, Main Pass Area, Revised, to a point having Coordinates of X = 2,666,797.00 and Y = 263,330.00; thence North 323.70 feet to a point having Coordinates of X = 2,666,797.00 and Y = 263,653.70, said point being the Southwesternmost corner of Louisiana State Lease No. 19082; thence along the southern and eastern boundaries of said Louisiana State Lease No. 19082 the following courses: North 75 degrees 34 minutes 59 seconds East 1,892.04 feet to a point having Coordinates of X = 2,668,629.46 and Y = 264,124.77; North 15 degrees 03 minutes 31 seconds West 231.09 feet to a point having Coordinates of X = 2,668,569.42 and Y = 264,347.93; North 15 degrees 03 minutes 27 seconds West 900.43 feet to a point having Coordinates of X = 2,668,335.50 and Y = 265,217.44; North 74 degrees 56 minutes 32 seconds East 1,629.29 feet to a point having Coordinates of X = 2,669,908.85 and Y = 265,640.72; and North 04 degrees 49 minutes 45 seconds West 1,292.97 feet to a point having Coordinates of X = 2,669,800.00 and Y = 266,929.10; thence East 3,119.77 feet to a point having Coordinates of X = 2,672,919.77 and Y = 266,929.10, said point being on the southern boundary of Louisiana State Lease No. 2776, as amended; thence along the southern boundary of said Louisiana State Lease No. 2726 the following courses: South 37 degrees 56 minutes 59 seconds East 1,440.43 feet to a point having Coordinates of X = 2,673,805.59 and Y = 265,793.25; South 42 degrees 54 minutes 59 seconds East 969.01 feet to a point having Coordinates of X = 2,674,465.72 and Y = 265,083.60; South 58 degrees 32 minutes 58 seconds East 498.01 feet to a point having Coordinates of X = 2,674,890.27 and Y = 264,823.75; South 78 degrees 32

minutes 57 seconds East 403.00 feet to a point having Coordinates of X = 2,675,285.24 and Y = 264,743.75; North 74 degrees 03 minutes 03 seconds East 400.00 feet to a point having Coordinates of X = 2,675,669.85 and Y = 264,853.66; North 48 degrees 31 minutes 03 seconds East 461.00 feet to a point having Coordinates of X = 2,676,015.21 and Y = 265,159.02; North 42 degrees 29 minutes 03 seconds East 563.00 feet to a point having Coordinates of X = 2,676,395.45 and Y = 265,574.22; North 32 degrees 46 minutes 03 seconds East 867.99 feet to a point having Coordinates of X = 2,676,865.23 and Y = 266,304.09; North 45 degrees 00 minutes 04 seconds East 240.00 feet to a point having Coordinates of X = 2,677,034.94 and Y = 266,473.79; North 72 degrees 54 minutes 03 seconds East 272.00 feet to a point having Coordinates of X = 2,677,294.92 and Y = 266,553.76; South 83 degrees 00 minutes 57 seconds East 247.00 feet to a point having Coordinates of X = 2,677,540.09 and Y = 266,523.73; North 83 degrees 11 minutes 03 seconds East 337.00 feet to a point having Coordinates of X = 2,677,874.70 and Y = 266,563.72; North 60 degrees 15 minutes 03 seconds East 403.00 feet to a point having Coordinates of X = 2,678,224.59 and Y = 266,763.69; North 61 degrees 23 minutes 03 seconds East 877.00 feet to a point having Coordinates of X = 2,678,994.47 and Y = 267,183.72; and North 68 degrees 41 minutes 03 seconds East 650.00 feet to a point having Coordinates of X = 2,679,600.00 and Y = 267,420.00, said point being on the East line of said Block 46, Main Pass Area, Revised; thence South 4,090.00 feet along said East line of said Block 46, Main Pass Area, Revised, to the point of beginning, containing **1,002.71 acres**, all as more particularly outlined on a plat on file in the Office of Mineral Resources, Department of Natural Resources. All bearings, distances and coordinates are based on Louisiana Coordinate System of 1927, (North or South Zone), where applicable.

NOTE: The above description of the Tract nominated for lease has been provided and corrected, where required, exclusively by the nomination party. Any mineral lease selected from this Tract and awarded by the Louisiana State Mineral Board shall be without warranty of any kind, either express, implied, or statutory, including, but not limited to, the implied warranties of merchantability and fitness for a particular purpose. Should the mineral lease awarded by the Louisiana State Mineral Board be subsequently modified, cancelled or abrogated due to the existence of conflicting leases, operating agreements, private claims or other future obligations or conditions which may affect all or any portion of the leased Tract, it shall not relieve the Lessee of the obligation to pay any bonus due thereon to the Louisiana State Mineral Board, nor shall the Louisiana State Mineral Board be obligated to refund any consideration paid by the Lessor prior to such modification, cancellation, or abrogation, including, but not limited to, bonuses, rentals and royalties.

NOTE: The State of Louisiana does hereby reserve, and this lease shall be subject to, the imprescriptible right of surface use in the nature of a servitude in favor of the Department of Natural Resources, including its Offices and Commissions, for the sole purpose of implementing,

constructing, servicing and maintaining approved coastal zone management and/or restoration projects. Utilization of any and all rights derived under this lease by the mineral lessee, its agents, successors or assigns, shall not interfere with nor hinder the reasonable surface use by the Department of Natural Resources, its Offices or Commissions, as herein above reserved.

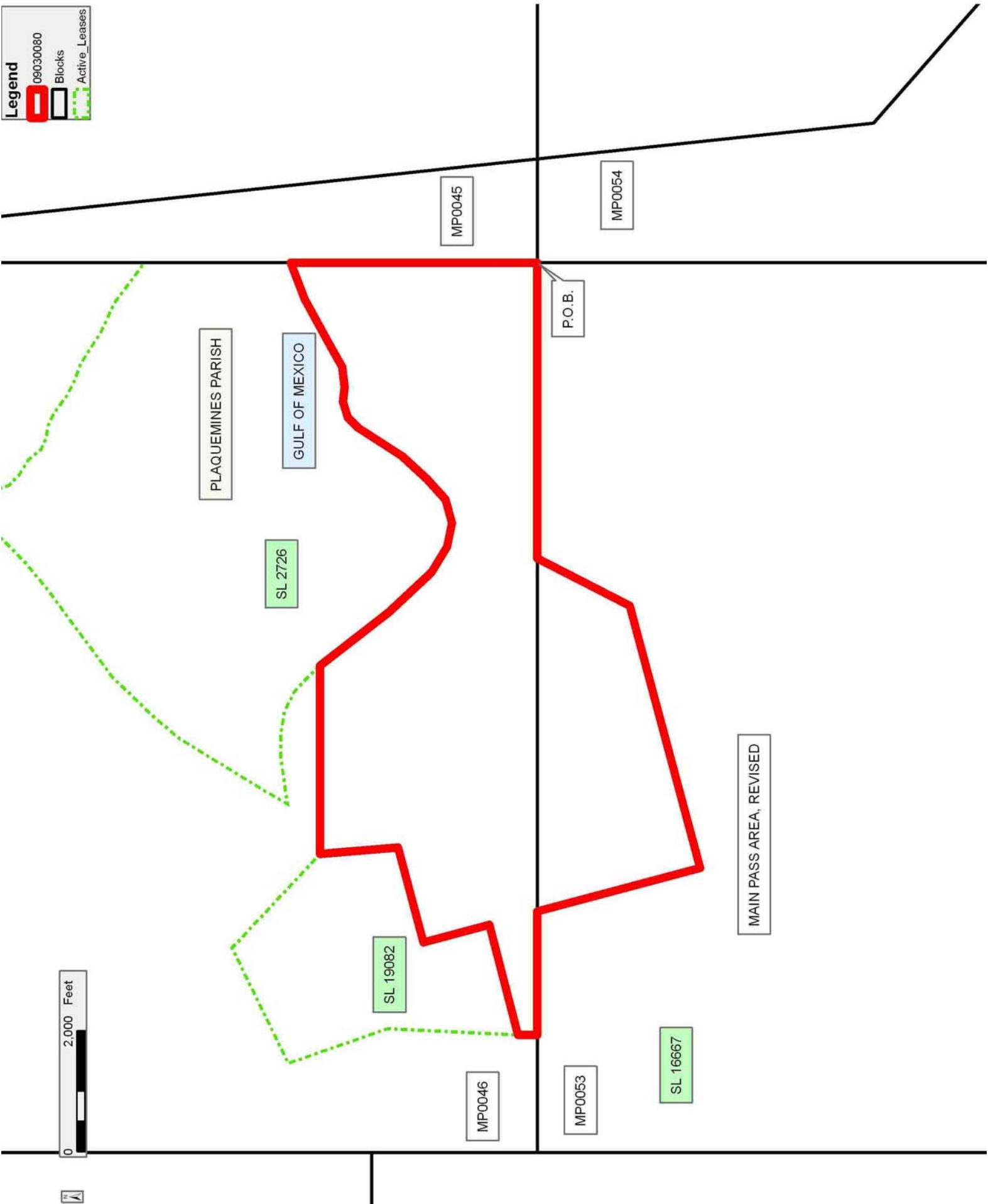
NOTE: The Department of Wildlife and Fisheries has designated certain areas in the coastal waters of the State of Louisiana as Oyster Seed Bed Areas. The exact location of those Seed Bed Areas must be obtained from the Department of Wildlife and Fisheries and any work done under a mineral lease from the State of Louisiana may necessarily be conducted in conformity with the rules and regulations promulgated by the said Department of Wildlife and Fisheries for Oyster Seed Bed Areas.

Applicant: ROBERT A. SCHROEDER, INC.

Bidder	Cash Payment	Price/Acre	Rental	Oil	Gas	Other

Legend

- 09030080
- Blocks
- Active_Leases



TRACT 40859 - Portion of Block 45, Main Pass Area, Revised, Plaquemines Parish, Louisiana

All of the lands now or formerly constituting the beds and bottoms of all water bodies of every nature and description as to which title is vested in the State of Louisiana, together with all islands arising therein and other lands formed by accretion or by reliction, where allowed by law, excepting tax adjudicated lands, and not presently under mineral lease on March 11, 2009, situated in Plaquemines Parish, Louisiana, and more particularly described as follows: Beginning at a point having Coordinates of X = 2,679,600.00 and Y = 267,420.00, said point being on the west line of Block 45, Main Pass Area, Revised; thence East 1,282.07 feet to a point having Coordinates of X = 2,680,882.07 and Y = 267,420.00, said point being a point on the Louisiana Coastline, as decreed by the Supreme Court of the United States, as determined by a Special Master appointed therein, in litigation styled *United States v. State of Louisiana et al No. 9 Original*, in 1975; thence South 06 degrees 06 minutes 01 seconds East 4,113.29 feet along said Louisiana Coast Line to a point having Coordinates of X = 2,681,319.18 and Y = 263,330.00, said point being on the south line of said Block 45, Main Pass Area, Revised; thence West 1,719.18 feet along said south line of said Block 45, Main Pass Area, Revised, to a point having Coordinates of X = 2,679,600.00 and Y = 263,330.00, said point also being the southwest corner of said Block 45, Main Pass Area, Revised; thence North 4,090.00 feet along said west line of said Block 45, Main Pass Area, Revised, to the point of beginning, containing **140.90 acres**, all as more particularly outlined on a plat on file in the Office of Mineral Resources, Department of Natural Resources. All bearings, distances and coordinates are based on Louisiana Coordinate System of 1927, (North or South Zone), where applicable.

NOTE: The above description of the Tract nominated for lease has been provided and corrected, where required, exclusively by the nomination party. Any mineral lease selected from this Tract and awarded by the Louisiana State Mineral Board shall be without warranty of any kind, either express, implied, or statutory, including, but not limited to, the implied warranties of merchantability and fitness for a particular purpose. Should the mineral lease awarded by the Louisiana State Mineral Board be subsequently modified, cancelled or abrogated due to the existence of conflicting leases, operating agreements, private claims or other future obligations or conditions which may affect all or any portion of the leased Tract, it shall not relieve the Lessee of the obligation to pay any bonus due thereon to the Louisiana State Mineral Board, nor shall the Louisiana State Mineral Board be obligated to refund any consideration paid by the Lessor prior to such modification, cancellation, or abrogation, including, but not limited to, bonuses, rentals and royalties.

NOTE: The State of Louisiana does hereby reserve, and this lease shall be subject to, the imprescriptible right of surface use in the nature of a servitude in favor of the Department of Natural Resources, including its Offices and Commissions, for the sole purpose of implementing,

constructing, servicing and maintaining approved coastal zone management and/or restoration projects. Utilization of any and all rights derived under this lease by the mineral lessee, its agents, successors or assigns, shall not interfere with nor hinder the reasonable surface use by the Department of Natural Resources, its Offices or Commissions, as herein above reserved.

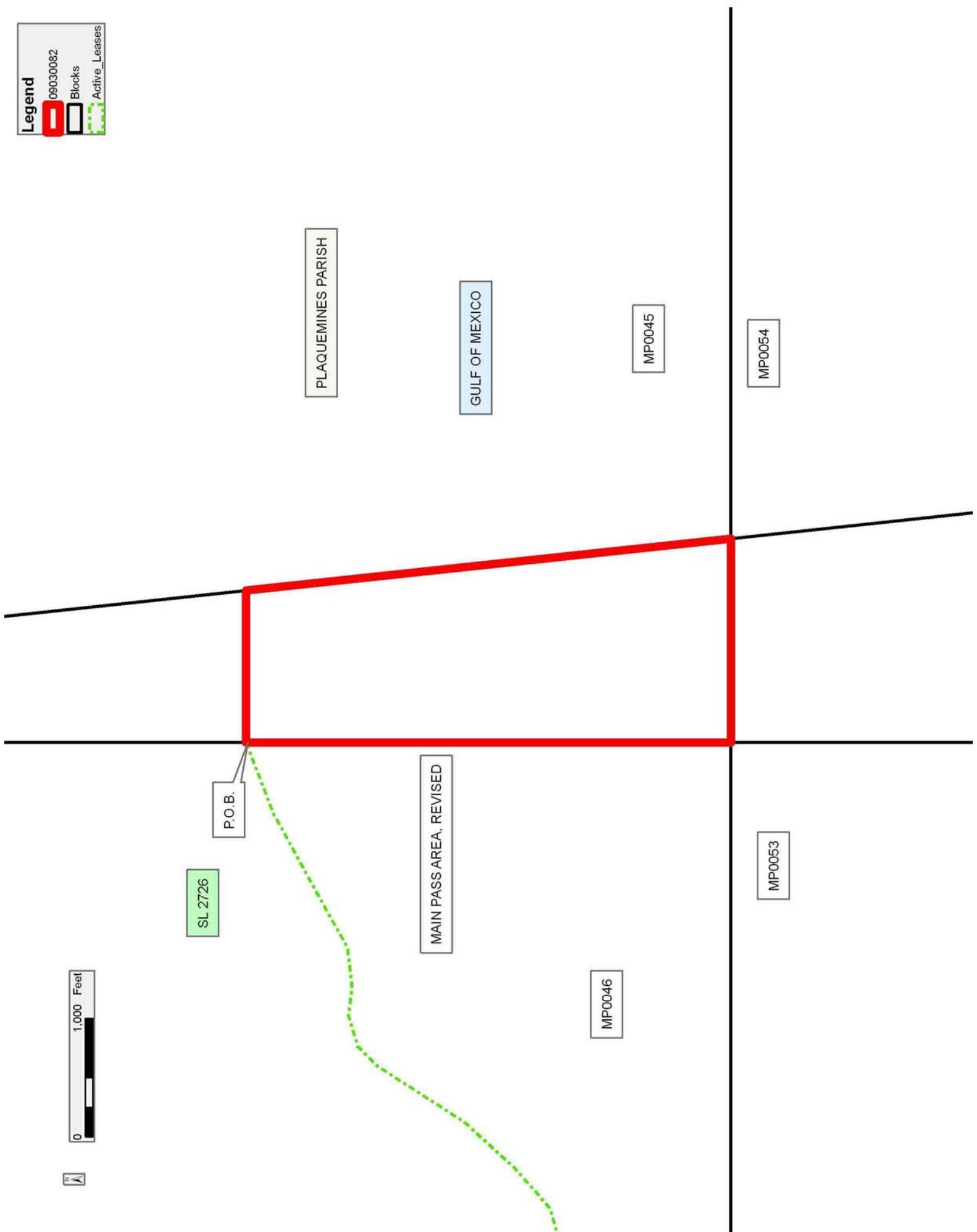
NOTE: The Department of Wildlife and Fisheries has designated certain areas in the coastal waters of the State of Louisiana as Oyster Seed Bed Areas. The exact location of those Seed Bed Areas must be obtained from the Department of Wildlife and Fisheries and any work done under a mineral lease from the State of Louisiana may necessarily be conducted in conformity with the rules and regulations promulgated by the said Department of Wildlife and Fisheries for Oyster Seed Bed Areas.

Applicant: ROBERT A. SCHROEDER, INC.

Bidder	Cash Payment	Price/Acre	Rental	Oil	Gas	Other

Legend

- 09030082
- Blocks
- Active_Leases



TRACT 40860 - Portion of Block 48, Main Pass Area, Revised, Plaquemines Parish, Louisiana

All of the lands now or formerly constituting the beds and bottoms of all water bodies of every nature and description as to which title is vested in the State of Louisiana, together with all islands arising therein and other lands formed by accretion or by reliction, where allowed by law, excepting tax adjudicated lands, and not presently under mineral lease on March 11, 2009, situated in Plaquemines Parish, Louisiana, and more particularly described as follows: All of Tract C-1 of the Price Case being more particularly described in the judgment as: Beginning at a point which is the center of projected Section 15, Township 19 South Range 18 East, Plaquemines Parish, which point has Lambert Coordinates of X = 2,635,491.55 and Y = 266,396.12; thence South 02 degrees 08 minutes 27 seconds East approximately 750 feet to the shoreline of a small island; thence Northeasterly along said shoreline to its intersection with the East West middle line of Section 15; thence South 87 degrees 51 minutes 33 seconds West to the point of beginning, containing approximately 6 gross acres and approximately **3.6 net acres**, all as more particularly outlined on a plat on file in the Office of Mineral Resources, Department of Natural Resources. All bearings, distances and coordinates are based on Louisiana Coordinate System of 1927, (North or South Zone), where applicable.

NOTE: The above description of the Tract nominated for lease has been provided and corrected, where required, exclusively by the nomination party. Any mineral lease selected from this Tract and awarded by the Louisiana State Mineral Board shall be without warranty of any kind, either express, implied, or statutory, including, but not limited to, the implied warranties of merchantability and fitness for a particular purpose. Should the mineral lease awarded by the Louisiana State Mineral Board be subsequently modified, cancelled or abrogated due to the existence of conflicting leases, operating agreements, private claims or other future obligations or conditions which may affect all or any portion of the leased Tract, it shall not relieve the Lessee of the obligation to pay any bonus due thereon to the Louisiana State Mineral Board, nor shall the Louisiana State Mineral Board be obligated to refund any consideration paid by the Lessor prior to such modification, cancellation, or abrogation, including, but not limited to, bonuses, rentals and royalties.




NOTE: The State of Louisiana does hereby reserve, and this lease shall be subject to, the imprescriptible right of surface use in the nature of a servitude in favor of the Department of Natural Resources, including its Offices and Commissions, for the sole purpose of implementing, constructing, servicing and maintaining approved coastal zone management and/or restoration projects. Utilization of any and all rights derived under this lease by the mineral lessee, its agents, successors or assigns, shall not interfere with nor hinder the reasonable surface use by the Department of Natural Resources, its Offices or Commissions, as herein above reserved.

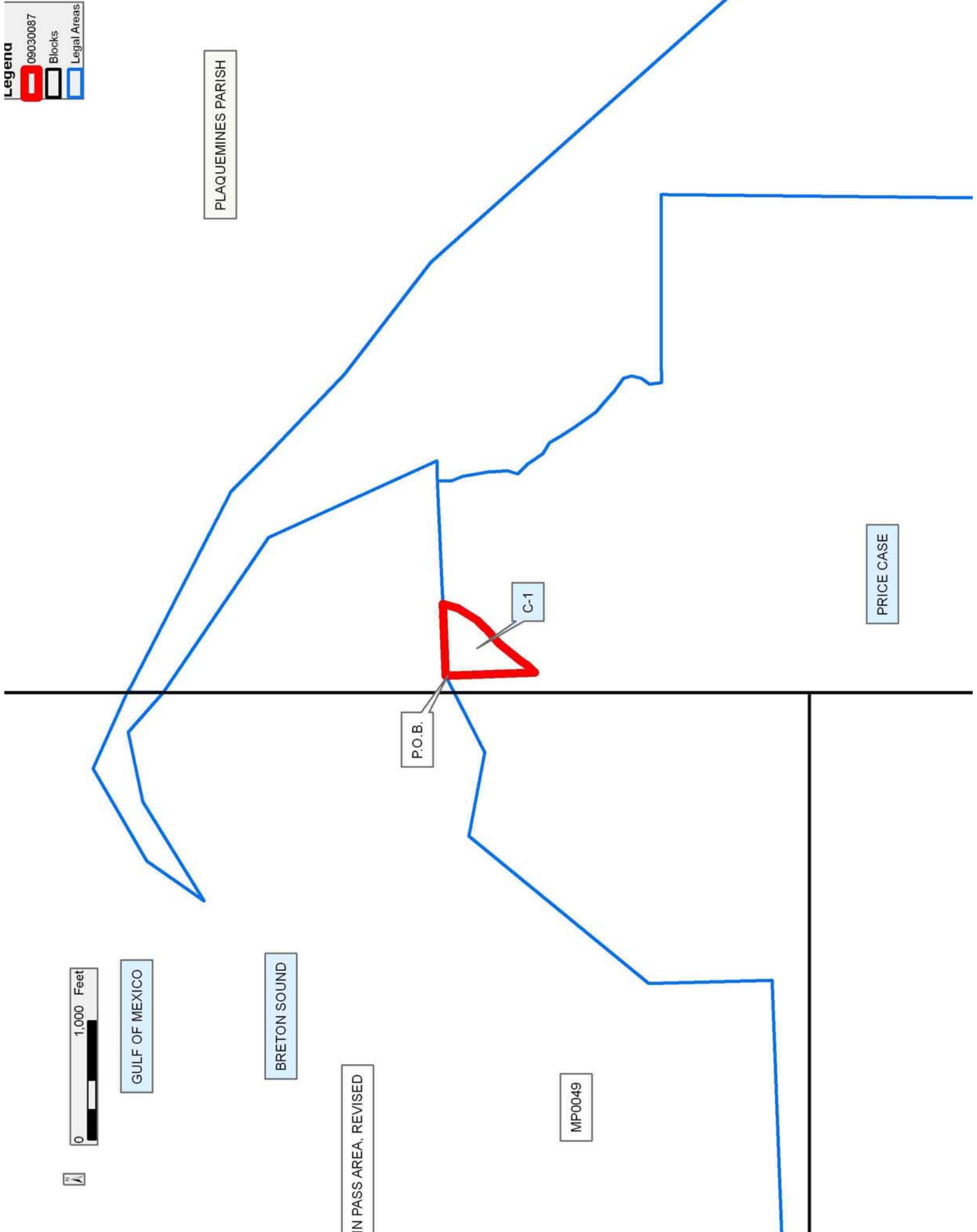
NOTE: The Department of Wildlife and Fisheries has designated certain areas in the coastal waters of the State of Louisiana as Oyster Seed Bed Areas. The exact location of those Seed Bed Areas must be obtained from the Department of Wildlife and Fisheries and any work done under a mineral lease from the State of Louisiana may necessarily be conducted in conformity with the rules and regulations promulgated by the said Department of Wildlife and Fisheries for Oyster Seed Bed Areas.

Applicant: THEOPHILUS OIL, GAS & LAND SERVICES, LLC

Bidder	Cash Payment	Price/Acre	Rental	Oil	Gas	Other

Legenda

-  09030087
-  Blocks
-  Legal Areas



TRACT 40861 - Portion of Blocks 53, and 54, Main Pass Area, Revised, Plaquemines Parish, Louisiana

All of the lands now or formerly constituting the beds and bottoms of all water bodies of every nature and description as to which title is vested in the State of Louisiana, together with all islands arising therein and other lands formed by accretion or by reliction, where allowed by law, excepting tax adjudicated lands, and not presently under mineral lease on March 11, 2009, situated in Plaquemines Parish, Louisiana, and more particularly described as follows: Beginning at a point having Coordinates of X = 2,679,600.00 and Y = 263,330.00, said point being common to the northeast corner of Block 53 and the northwest corner of Block 54, Main Pass Area, Revised; thence East 1,719.18 feet along the north line of said Block 54, Main Pass Area, Revised, to a point having Coordinates of X = 2,681,319.18 and Y = 263,330.00, said point being a point on the Louisiana Coastline, as decreed by the Supreme Court of the United States, as determined by a Special Master appointed therein, in litigation styled *United States v. State of Louisiana et al No. 9 Original*, in 1975; thence along said Louisiana Coast Line the following courses: South 06 degrees 06 minutes 01 seconds East 5,606.75 feet to a point having Coordinates of X = 2,681,915 and Y = 257,755; and South 48 degrees 45 minutes 46 seconds East 1,403.26 feet to a point having Coordinates of X = 2,682,970.23 and Y = 256,830.00; thence West 3,370.23 feet to a point having Coordinates of X = 2,679,600.00 and Y = 256,830.00, said point being on the west line of said Block 54, Main Pass Area, Revised; thence West 1,545.00 feet to a point having Coordinates of X = 2,678,055.00 and Y = 256,830.00; thence North 2,570.00 feet to a point having coordinates of X = 2,678,055.00 and Y = 259,400.00; thence North 3,930.00 feet to a point having coordinates of X = 2,678,055.00 and Y = 263,330.00, said point being on the north line of said Block 53, Main Pass Area, Revised; thence East 1,545.00 along said north line of said Block 53, Main Pass Area, Revised, to the point of beginning, containing **549.06 acres**, all as more particularly outlined on a plat on file in the Office of Mineral Resources, Department of Natural Resources. All bearings, distances and coordinates are based on Louisiana Coordinate System of 1927, (North or South Zone), where applicable.

NOTE: The above description of the Tract nominated for lease has been provided and corrected, where required, exclusively by the nomination party. Any mineral lease selected from this Tract and awarded by the Louisiana State Mineral Board shall be without warranty of any kind, either express, implied, or statutory, including, but not limited to, the implied warranties of merchantability and fitness for a particular purpose. Should the mineral lease awarded by the Louisiana State Mineral Board be subsequently modified, cancelled or abrogated due to the existence of conflicting leases, operating agreements, private claims or other future obligations or conditions which may affect all or any portion of the leased Tract, it shall not relieve the Lessee of the obligation to pay any bonus due thereon to the Louisiana State Mineral Board, nor shall the Louisiana State Mineral Board be obligated to refund any consideration

paid by the Lessor prior to such modification, cancellation, or abrogation, including, but not limited to, bonuses, rentals and royalties.

NOTE: The State of Louisiana does hereby reserve, and this lease shall be subject to, the imprescriptible right of surface use in the nature of a servitude in favor of the Department of Natural Resources, including its Offices and Commissions, for the sole purpose of implementing, constructing, servicing and maintaining approved coastal zone management and/or restoration projects. Utilization of any and all rights derived under this lease by the mineral lessee, its agents, successors or assigns, shall not interfere with nor hinder the reasonable surface use by the Department of Natural Resources, its Offices or Commissions, as herein above reserved.

NOTE: The Department of Wildlife and Fisheries has designated certain areas in the coastal waters of the State of Louisiana as Oyster Seed Bed Areas. The exact location of those Seed Bed Areas must be obtained from the Department of Wildlife and Fisheries and any work done under a mineral lease from the State of Louisiana may necessarily be conducted in conformity with the rules and regulations promulgated by the said Department of Wildlife and Fisheries for Oyster Seed Bed Areas.

Applicant: ROBERT A. SCHROEDER, INC.

Bidder	Cash Payment	Price/Acre	Rental	Oil	Gas	Other

Legend

09030081
 Blocks