

TRACT 39736 - Plaquemines Parish, Louisiana

All State owned lands and water bottoms located within the boundaries of the Pass-A-Loutre Wildlife Management Area as defined by the Department of Wildlife and Fisheries incorporating a title opinion from the Office of the Governor dated August 3, 1998, not presently under mineral lease by the State of Louisiana on March 12, 2008, all as set forth following: Beginning at the Westernmost Northwest corner of Block 16, South Pass Area, having Coordinates of X = 2,719,234.00 and Y = 153,782.00; thence East 8,215.83 feet to a point having Coordinates of X = 2,727,449.83 and Y = 153,782.00; thence North 2,158.00 feet to a point having Coordinates of X = 2,727,449.83 and Y = 155,940.00; thence East 3,542.60 feet to a point on the Eastern boundary of the Pass-A-Loutre Wildlife Management Area having Coordinates of X = 2,730,992.43 and Y = 155,940.00; thence Southwesterly along the Eastern boundary of said Pass-A-Loutre Wildlife Management Area to the point of intersection with the South line of said Block 16 having Coordinates of X = 2,723,386.72 and Y = 141,182.00; thence West 4,152.72 feet along the South line of said Block 16 to its Southwest corner having Coordinates of X = 2,719,234.00 and Y = 141,182.00; thence North 12,600.00 feet along the West line of said Block 16 to the point of beginning, containing approximately 2,288.31 gross acres, **LESS AND EXCEPT** any privately owned land that may be located within the above described tract, if any, comprising approximately 0 acres, leaving a total of approximately **2,288.31 acres**, containing approximately 2,288.31 gross acres, **LESS AND EXCEPT** any privately owned land that may be located within the above described Tract, leaving a total of 2,288.31 net acres of State owned land and water bottoms within the above described Tract, all as more particularly outlined on a plat on file in the Office of Mineral Resources, Department of Natural Resources. All bearings, distances and coordinates are based on Louisiana Coordinate System of 1927, (South Zone).

NOTE: The above description of the Tract nominated for lease has been provided and corrected, where required, exclusively by the nomination party. Any mineral lease selected from this Tract and awarded by the Louisiana State Mineral Board shall be without warranty of any kind, either express, implied, or statutory, including, but not limited to, the implied warranties of merchantability and fitness for a particular purpose. Should the mineral lease awarded by the Louisiana State Mineral Board be subsequently modified, cancelled or abrogated due to the existence of conflicting leases, operating agreements, private claims or other future obligations or conditions which may affect all or any portion of the leased Tract, it shall not relieve the Lessee of the obligation to pay any bonus due thereon to the Louisiana State Mineral Board, nor shall the Louisiana State Mineral Board be obligated to refund any consideration paid by the Lessor prior to such modification, cancellation, or abrogation, including, but not limited to, bonuses, rentals and royalties.

NOTE: The Office of Mineral Resources will require a minimum bonus of \$350 per acre and a minimum royalty of 25%.

NOTE: This tract is located in The Pass-a-Loutre WMA under the jurisdiction of the Louisiana Department of Wildlife and Fisheries which has promulgated rules and regulations for the protection of game and wildlife on the aforesaid Tract and, therefore, shall be subject to said rules and regulations, a copy of which shall be attached to the mineral lease. In addition to the specific rules and regulations applicable, the following shall apply regarding operations under this mineral lease:

- 1. No activities will be allowed without written authorization of the Louisiana Department of Wildlife and Fisheries. All projects will be coordinated and approved by the Pass-A-Loutre WMA Supervisor prior to any activities on the wildlife management area.*
- 2. Proposed projects will be evaluated on a case by case basis. Modifications to proposed project features including but not limited to access routes, well sites, flowlines and appurtenant structures may be required by the Louisiana Department of Wildlife and Fisheries.*
- 3. Compliance with the Pass-A-Loutre WMA regulations will be required unless otherwise specified by the Department.*
- 4. Compensatory mitigation will be required to offset unavoidable habitat impacts.*
- 5. Removal of all structures, facilities and equipment will be required within 120 days of abandonment unless otherwise agreed to by the Department.*
- 6. No activities will be allowed during the hunting season unless approved by the department.*
- 7. Prior to submitting applications for wetland permits to Federal and State permitting agencies, the leaseholder shall coordinate project details with the Department. Contact person for the Department will be Mike Windham at 504-568-5886 or (225) 765-2807.*
- 8. A minimum bonus of \$350.00 per acre and a minimum royalty of 25% will be required.*

NOTE: The State of Louisiana does hereby reserve, and this lease shall be subject to, the imprescriptible right of surface use in the nature of a servitude in favor of the Department of Natural Resources, including its Offices and Commissions, for the sole purpose of implementing, constructing, servicing and maintaining approved coastal zone management and/or restoration projects. Utilization of any and all rights derived under this lease by the mineral lessee, its agents, successors or assigns, shall not interfere with nor hinder the reasonable surface use by the Department of Natural Resources, its Offices or Commissions, as herein above reserved.




NOTE: It appears, according to our records, that a portion of this Tract is located within the restrictive safety fairway area as set out by the Corps of Engineers, U.S. Army and/or the restrictive anchorage area as set out by the U.S. Coast Guard.

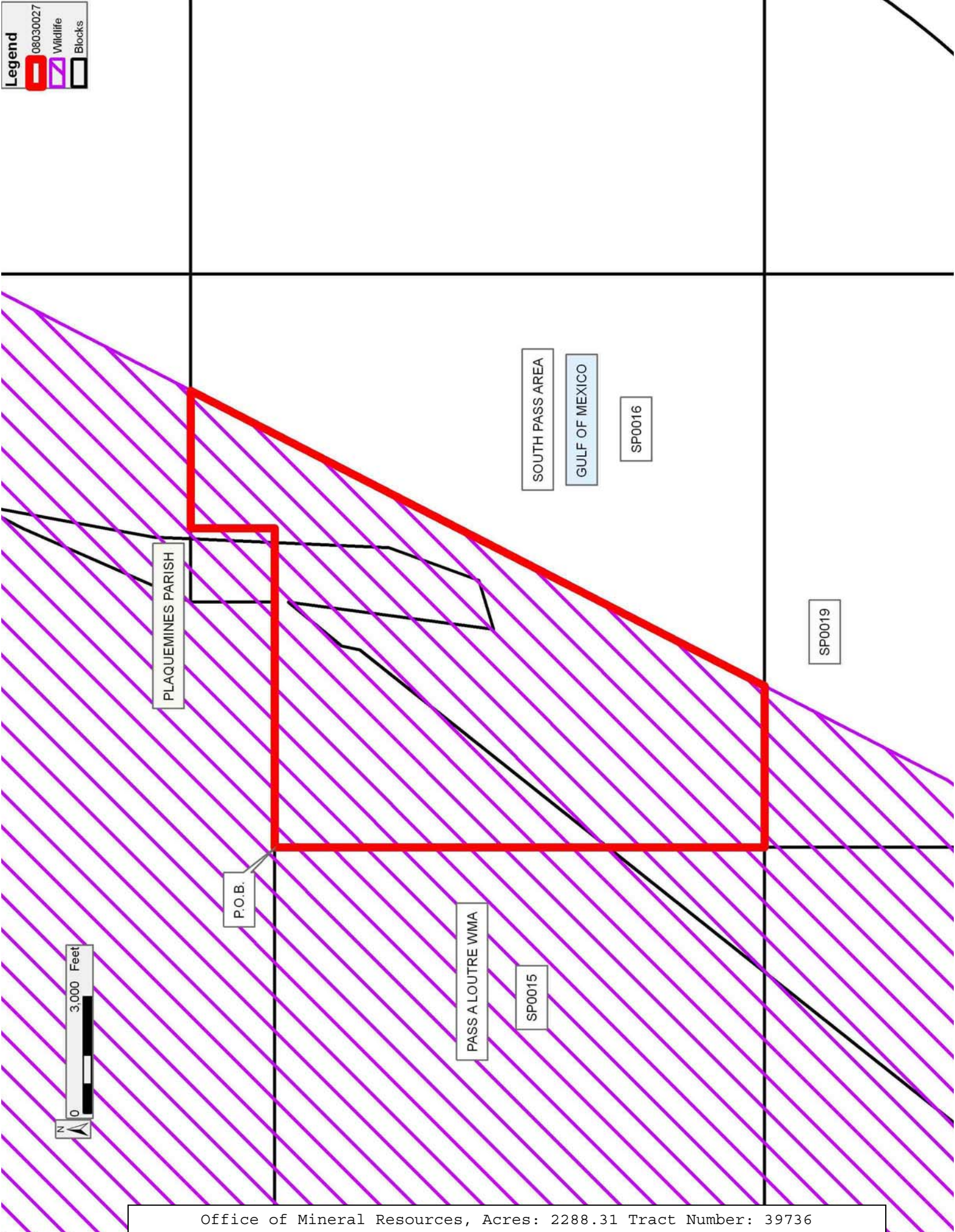
NOTE: The Department of Wildlife and Fisheries has designated certain areas in the coastal waters of the State of Louisiana as Oyster Seed Bed Areas. The exact location of those Seed Bed Areas must be obtained from the Department of Wildlife and Fisheries and any work done under a mineral lease from the State of Louisiana may necessarily be conducted in conformity with the rules and regulations promulgated by the said Department of Wildlife and Fisheries for Oyster Seed Bed Areas.

Applicant: OIL AND GAS RESOURCES, INC.

Bidder	Cash Payment	Price/Acre	Rental	Oil	Gas	Other

Legend

-  08030027
-  Wildlife
-  Blocks



TRACT 39737 - Plaquemines Parish, Louisiana

All State owned lands and water bottoms located within the boundaries of the Pass-A-Loutre Wildlife Management Area as defined by the Department of Wildlife and Fisheries incorporating a title opinion from the Office of the Governor dated August 3, 1998, not presently under mineral lease by the State of Louisiana on March 12, 2008, all as set forth following: Beginning at a point on the South line of Block 15, South Pass Area, having Coordinates of X = 2,711,855.00 and Y = 141,182.00; thence West 7,379.00 feet along the South line of said Block 15 to its Southwest corner having Coordinates of X = 2,704,476.00 and Y = 141,182.00; thence North 12,600.00 feet along the West line of said Block 15 to its Northwest corner having Coordinates of X = 2,704,476.00 and Y = 153,782.00; thence East 7,379.00 feet along the North line of said Block 15 to a point having Coordinates of X = 2,711,855.00 and Y = 153,782.00; thence South 12,600.00 feet to the point of beginning, containing 2,134.42 gross acres, containing approximately 2,134.42 gross acres, **LESS AND EXCEPT** any privately owned land that may be located within the above described Tract, if any, comprising approximately 0 acres, leaving a total of 2,134.42 net acres State owned land and water bottoms within the above described Tract, all as more particularly outlined on a plat on file in the Office of Mineral Resources, Department of Natural Resources. All bearings, distances and coordinates are based on Louisiana Coordinate System of 1927, (South Zone).

NOTE: The above description of the Tract nominated for lease has been provided and corrected, where required, exclusively by the nomination party. Any mineral lease selected from this Tract and awarded by the Louisiana State Mineral Board shall be without warranty of any kind, either express, implied, or statutory, including, but not limited to, the implied warranties of merchantability and fitness for a particular purpose. Should the mineral lease awarded by the Louisiana State Mineral Board be subsequently modified, cancelled or abrogated due to the existence of conflicting leases, operating agreements, private claims or other future obligations or conditions which may affect all or any portion of the leased Tract, it shall not relieve the Lessee of the obligation to pay any bonus due thereon to the Louisiana State Mineral Board, nor shall the Louisiana State Mineral Board be obligated to refund any consideration paid by the Lessor prior to such modification, cancellation, or abrogation, including, but not limited to, bonuses, rentals and royalties.

NOTE: The Office of Mineral Resources will require a minimum bonus of \$350 per acre and a minimum royalty of 25%.

NOTE: This tract is located in The Pass-a-Loutre WMA under the jurisdiction of the Louisiana Department of Wildlife and Fisheries which has promulgated rules and regulations for the protection of game and wildlife on the aforesaid Tract and, therefore, shall be subject to said rules and regulations, a copy of which shall be attached to the mineral lease. In addition to the specific rules and regulations applicable, the following shall apply regarding operations under this mineral lease:

1. *No activities will be allowed without written authorization of the Louisiana Department of Wildlife and Fisheries. All projects will be coordinated and approved by the Pass-A-Loutre WMA Supervisor prior to any activities on the wildlife management area.*
2. *Proposed projects will be evaluated on a case by case basis. Modifications to proposed project features including but not limited to access routes, well sites, flowlines and appurtenant structures may be required by the Louisiana Department of Wildlife and Fisheries.*
3. *Compliance with the Pass-A-Loutre WMA regulations will be required unless otherwise specified by the Department.*
4. *Compensatory mitigation will be required to offset unavoidable habitat impacts.*
5. *Removal of all structures, facilities and equipment will be required within 120 days of abandonment unless otherwise agreed to by the Department.*
6. *No activities will be allowed during the hunting season unless approved by the department.*
7. *Prior to submitting applications for wetland permits to Federal and State permitting agencies, the leaseholder shall coordinate project details with the Department. Contact person for the Department will be Mike Windham at 504-568-5886 or (225) 765-2807.*
8. *A minimum bonus of \$350.00 per acre and a minimum royalty of 25% will be required.*

NOTE: The State of Louisiana does hereby reserve, and this lease shall be subject to, the imprescriptible right of surface use in the nature of a servitude in favor of the Department of Natural Resources, including its Offices and Commissions, for the sole purpose of implementing, constructing, servicing and maintaining approved coastal zone management and/or restoration projects. Utilization of any and all rights derived under this lease by the mineral lessee, its agents, successors or assigns, shall not interfere with nor hinder the reasonable surface use by the Department of Natural Resources, its Offices or Commissions, as herein above reserved.

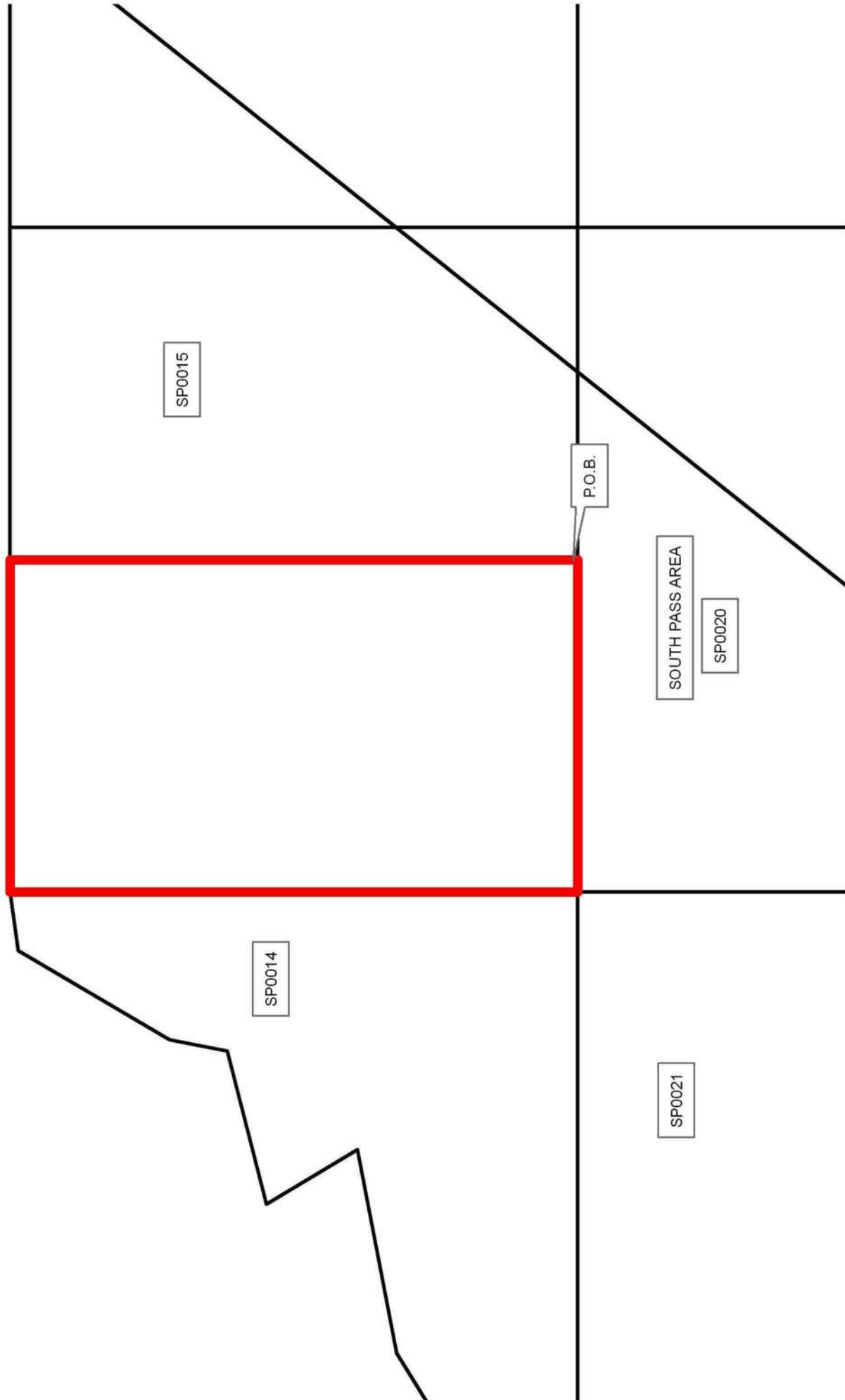
NOTE: The Department of Wildlife and Fisheries has designated certain areas in the coastal waters of the State of Louisiana as Oyster Seed Bed Areas. The exact location of those Seed Bed Areas must be obtained from the Department of Wildlife and Fisheries and any work done under a mineral lease from the State of Louisiana may necessarily be conducted in conformity with the rules and regulations promulgated by the said Department of Wildlife and Fisheries for Oyster Seed Bed Areas.

Applicant: OIL AND GAS RESOURCES, INC.

Bidder	Cash Payment	Price/Acre	Rental	Oil	Gas	Other



PLAQUEMINES PARISH
PASS A LOUTRE WMA
GULF OF MEXICO



TRACT 39738 - Plaquemines Parish, Louisiana

All State owned lands and water bottoms located within the boundaries of the Pass-A-Loutre Wildlife Management Area as defined by the Department of Wildlife and Fisheries incorporating a title opinion from the Office of the Governor dated August 3, 1998, not presently under mineral lease by the State of Louisiana on March 12, 2008, all as set forth following: Beginning at a point on the South line of Block 15, South Pass Area, having Coordinates of X = 2,711,855.00 and Y = 141,182.00; thence North 12,600.00 feet to a point on the North line of said Block 15 having Coordinates of X = 2,711,855.00 and Y = 153,782.00; thence East 7,379.00 feet along the North line of said Block 15 to its Northeast corner having Coordinates of X = 2,719,234.00 and Y = 153,782.00; thence South 12,600.00 feet along the East line of said Block 15 to its Southeast corner having Coordinates of X = 2,719,234.00 and Y = 141,182.00; thence West 7,379.00 feet along the South line of said Block 15 to the point of beginning, containing approximately 2,134.42 gross acres, **LESS AND EXCEPT** any privately owned land that may be located within the above described tract, if any, leaving a total of **2,134.42 acres**, containing approximately 2,134.42 gross acres, **LESS AND EXCEPT** any privately owned land that may be located within the above described Tract, if any, comprising approximately 0 acres, leaving a total of 2,134.42 net acres of State owned land and water bottoms within the above described Tract, all as more particularly outlined on a plat on file in the Office of Mineral Resources, Department of Natural Resources. All bearings, distances and coordinates are based on Louisiana Coordinate System of 1927, (South Zone).

NOTE: The above description of the Tract nominated for lease has been provided and corrected, where required, exclusively by the nomination party. Any mineral lease selected from this Tract and awarded by the Louisiana State Mineral Board shall be without warranty of any kind, either express, implied, or statutory, including, but not limited to, the implied warranties of merchantability and fitness for a particular purpose. Should the mineral lease awarded by the Louisiana State Mineral Board be subsequently modified, cancelled or abrogated due to the existence of conflicting leases, operating agreements, private claims or other future obligations or conditions which may affect all or any portion of the leased Tract, it shall not relieve the Lessee of the obligation to pay any bonus due thereon to the Louisiana State Mineral Board, nor shall the Louisiana State Mineral Board be obligated to refund any consideration paid by the Lessor prior to such modification, cancellation, or abrogation, including, but not limited to, bonuses, rentals and royalties.

NOTE: The Office of Mineral Resources will require a minimum bonus of \$350 per acre and a minimum royalty of 25%.

NOTE: This tract is located in The Pass-a-Loutre WMA under the jurisdiction of the Louisiana Department of Wildlife and Fisheries which has promulgated rules and regulations for the protection of game and wildlife on the aforesaid Tract and, therefore, shall be subject to said rules and regulations, a copy of which shall be

attached to the mineral lease. In addition to the specific rules and regulations applicable, the following shall apply regarding operations under this mineral lease:

- 1. No activities will be allowed without written authorization of the Louisiana Department of Wildlife and Fisheries. All projects will be coordinated and approved by the Pass-A-Loutre WMA Supervisor prior to any activities on the wildlife management area.*
- 2. Proposed projects will be evaluated on a case by case basis. Modifications to proposed project features including but not limited to access routes, well sites, flowlines and appurtenant structures may be required by the Louisiana Department of Wildlife and Fisheries.*
- 3. Compliance with the Pass-A-Loutre WMA regulations will be required unless otherwise specified by the Department.*
- 4. Compensatory mitigation will be required to offset unavoidable habitat impacts.*
- 5. Removal of all structures, facilities and equipment will be required within 120 days of abandonment unless otherwise agreed to by the Department.*
- 6. No activities will be allowed during the hunting season unless approved by the department.*
- 7. Prior to submitting applications for wetland permits to Federal and State permitting agencies, the leaseholder shall coordinate project details with the Department. Contact person for the Department will be Mike Windham at 504-568-5886 or (225) 765-2807.*
- 8. A minimum bonus of \$350.00 per acre and a minimum royalty of 25% will be required.*

NOTE: The State of Louisiana does hereby reserve, and this lease shall be subject to, the imprescriptible right of surface use in the nature of a servitude in favor of the Department of Natural Resources, including its Offices and Commissions, for the sole purpose of implementing, constructing, servicing and maintaining approved coastal zone management and/or restoration projects. Utilization of any and all rights derived under this lease by the mineral lessee, its agents, successors or assigns, shall not interfere with nor hinder the reasonable surface use by the Department of Natural Resources, its Offices or Commissions, as herein above reserved.

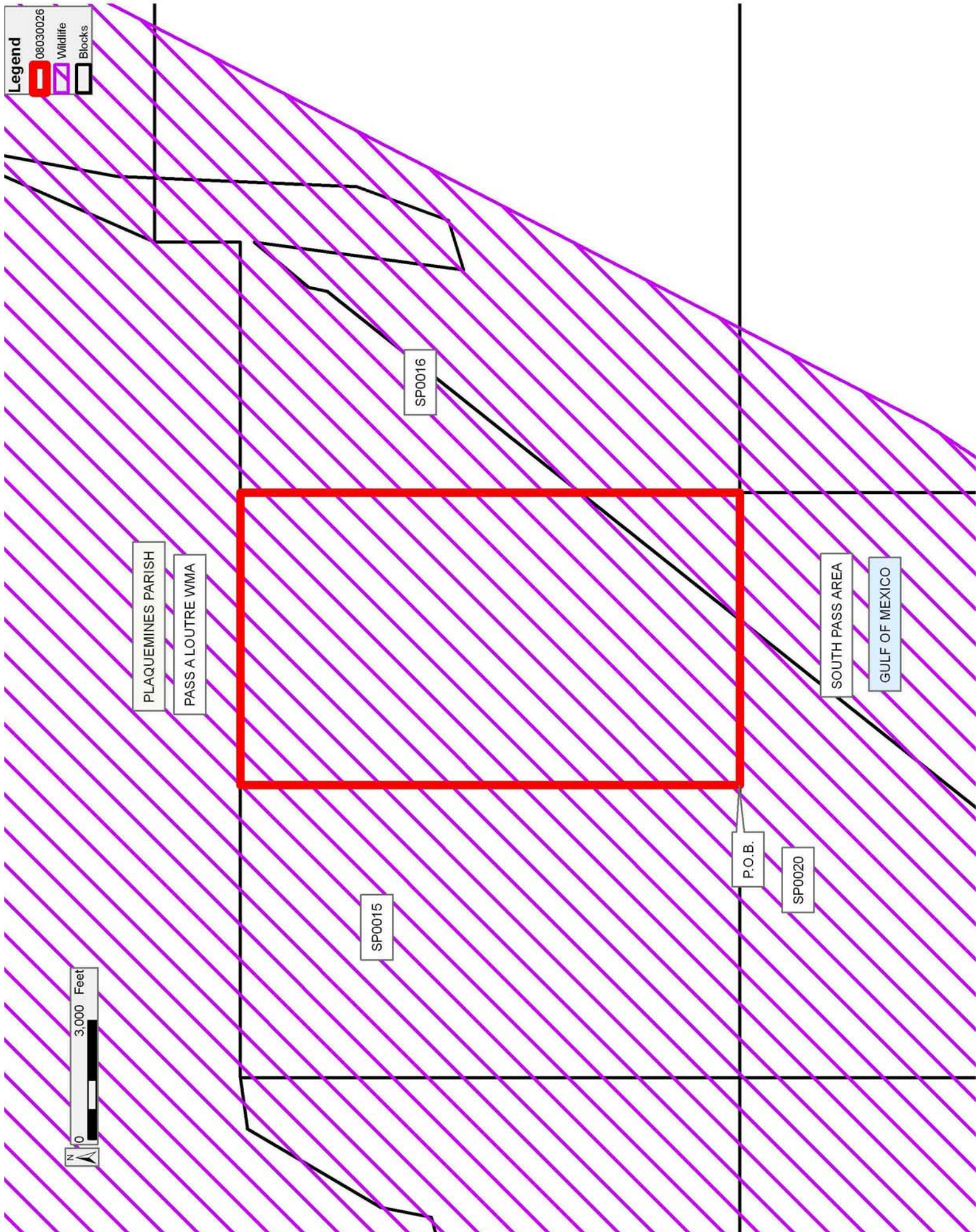
NOTE: The Department of Wildlife and Fisheries has designated certain areas in the coastal waters of the State of Louisiana as Oyster Seed Bed Areas. The exact location of those Seed Bed Areas must be obtained from the Department of Wildlife and Fisheries and any work done under a mineral lease from the State of Louisiana may necessarily be conducted in conformity with the rules and regulations promulgated by the said Department of Wildlife and Fisheries for Oyster Seed Bed Areas.

Applicant: OIL AND GAS RESOURCES, INC.

Bidder	Cash Payment	Price/Acre	Rental	Oil	Gas	Other

Legend

- 08030026
- Wildlife
- Blocks



TRACT 39739 - Plaquemines Parish, Louisiana

All State owned lands and water bottoms located within the boundaries of the Pass-A-Loutre Wildlife Management Area as defined by the Department of Wildlife and Fisheries incorporating a title opinion from the Office of the Governor dated August 3, 1998, not presently under mineral lease by the State of Louisiana on March 12, 2008, all as set forth following: Beginning at a point on the North line of Block 20, South Pass Area, having Coordinates of X = 2,711,855.00 and Y = 141,182.00; thence South 10,203.51 feet to a point having Coordinates of X = 2,711,855.00 and Y = 130,978.49; thence South 47 degrees 49 minutes 01 seconds West 4,325.08 feet to a point having Coordinates of X = 2,708,650.11 and Y = 128,074.19; thence North 68 degrees 00 minutes 24 seconds West 2,317.18 feet to a point having Coordinates of X = 2,706,501.56 and Y = 128,941.97; thence South 42 degrees 03 minutes 38 seconds West 3,023.60 feet to a point on the West line of said Block 20 having Coordinates of X = 2,704,476.00 and Y = 126,697.14; thence North 14,484.86 feet along the West line of said Block 20 to its Northwest corner having Coordinates of X = 2,704,476.00 and Y = 141,182.00; thence East 7,379.00 feet along the North line of said Block 20 to the point of beginning, containing approximately 2,104.04 gross acres, **LESS AND EXCEPT** any privately owned land that may be located within the above described tract, if any, comprising approximately 0 acres, leaving a total of approximately **2,104.04 acres, LESS AND EXCEPT** any privately owned land that may be located within the above described Tract, leaving a total of 2,104.04 net acres of State owned land and water bottoms within the above described Tract, all as more particularly outlined on a plat on file in the Office of Mineral Resources, Department of Natural Resources. All bearings, distances and coordinates are based on Louisiana Coordinate System of 1927, (South Zone).

NOTE: The above description of the Tract nominated for lease has been provided and corrected, where required, exclusively by the nomination party. Any mineral lease selected from this Tract and awarded by the Louisiana State Mineral Board shall be without warranty of any kind, either express, implied, or statutory, including, but not limited to, the implied warranties of merchantability and fitness for a particular purpose. Should the mineral lease awarded by the Louisiana State Mineral Board be subsequently modified, cancelled or abrogated due to the existence of conflicting leases, operating agreements, private claims or other future obligations or conditions which may affect all or any portion of the leased Tract, it shall not relieve the Lessee of the obligation to pay any bonus due thereon to the Louisiana State Mineral Board, nor shall the Louisiana State Mineral Board be obligated to refund any consideration paid by the Lessor prior to such modification, cancellation, or abrogation, including, but not limited to, bonuses, rentals and royalties.

NOTE: The Office of Mineral Resources will require a minimum bonus of \$350 per acre and a minimum royalty of 25%.

NOTE: This tract is located in The Pass-a-Loutre WMA under the jurisdiction of the Louisiana Department of Wildlife and Fisheries which has promulgated rules and regulations for the protection of game and wildlife on the aforesaid Tract and, therefore, shall be subject to said rules and regulations, a copy of which shall be attached to the mineral lease. In addition to the specific rules and regulations applicable, the following shall apply regarding operations under this mineral lease:

- 1. No activities will be allowed without written authorization of the Louisiana Department of Wildlife and Fisheries. All projects will be coordinated and approved by the Pass-A-Loutre WMA Supervisor prior to any activities on the wildlife management area.*
- 2. Proposed projects will be evaluated on a case by case basis. Modifications to proposed project features including but not limited to access routes, well sites, flowlines and appurtenant structures may be required by the Louisiana Department of Wildlife and Fisheries.*
- 3. Compliance with the Pass-A-Loutre WMA regulations will be required unless otherwise specified by the Department.*
- 4. Compensatory mitigation will be required to offset unavoidable habitat impacts.*
- 5. Removal of all structures, facilities and equipment will be required within 120 days of abandonment unless otherwise agreed to by the Department.*
- 6. No activities will be allowed during the hunting season unless approved by the department.*
- 7. Prior to submitting applications for wetland permits to Federal and State permitting agencies, the leaseholder shall coordinate project details with the Department. Contact person for the Department will be Mike Windham at 504-568-5886 or (225) 765-2807.*
- 8. A minimum bonus of \$350.00 per acre and a minimum royalty of 25% will be required.*

NOTE: The State of Louisiana does hereby reserve, and this lease shall be subject to, the imprescriptible right of surface use in the nature of a servitude in favor of the Department of Natural Resources, including its Offices and Commissions, for the sole purpose of implementing, constructing, servicing and maintaining approved coastal zone management and/or restoration projects. Utilization of any and all rights derived under this lease by the mineral lessee, its agents, successors or assigns, shall not interfere with nor hinder the reasonable surface use by the Department of Natural Resources, its Offices or Commissions, as herein above reserved.

NOTE: It appears, according to our records, that a portion of this Tract is located within the restrictive safety fairway area as set out by the Corps of Engineers, U.S. Army and/or the restrictive anchorage area as set out by the U.S. Coast Guard.

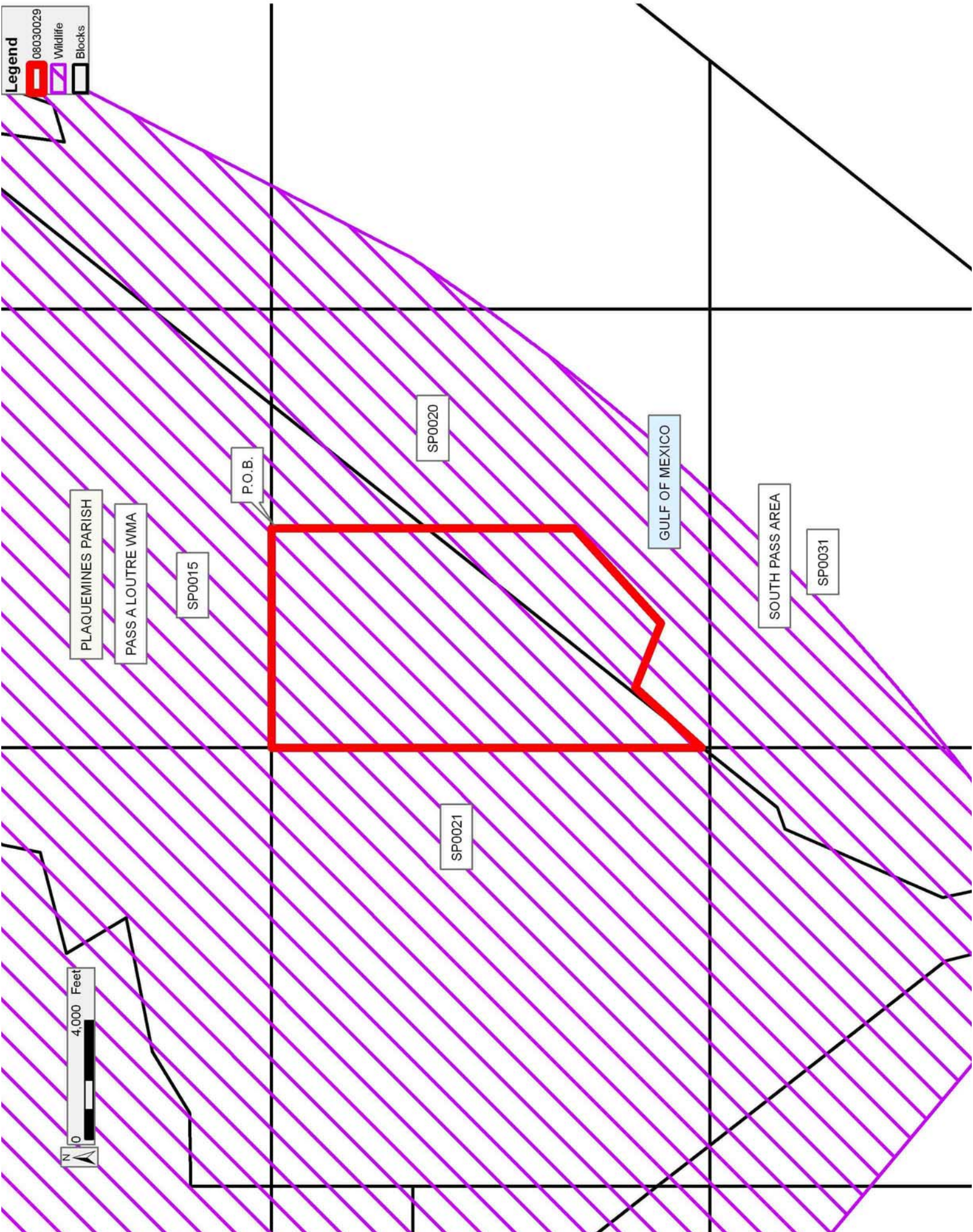
NOTE: The Department of Wildlife and Fisheries has designated certain areas in the coastal waters of the State of Louisiana as Oyster Seed Bed Areas. The exact location of those Seed Bed Areas must be obtained from the Department of Wildlife and Fisheries and any work done under a mineral lease from the State of Louisiana may necessarily be conducted in conformity with the rules and regulations promulgated by the said Department of Wildlife and Fisheries for Oyster Seed Bed Areas.

Applicant: OIL AND GAS RESOURCES, INC.

Bidder	Cash Payment	Price/Acre	Rental	Oil	Gas	Other

Legend

- 08030029
- Wildlife
- Blocks



TRACT 39740 - Plaquemines Parish, Louisiana

All State owned lands and water bottoms located within the boundaries of the Pass-A-Loutre Wildlife Management Area as defined by the Department of Wildlife and Fisheries incorporating a title opinion from the Office of the Governor dated August 3, 1998, not presently under mineral lease by the State of Louisiana on March 12, 2008, all as set forth following: Beginning at a point on the North line of Block 20, South Pass Area, having Coordinates of X = 2,711,855.00 and Y = 141,182.00; thence East 7,379.00 feet along the North line of said Block 20 to its Northeast corner, also being the Northwest corner of Block 19, South Pass Area, having Coordinates of X = 2,719,234.00 and Y = 141,182.00; thence East 3,876.33 feet along the North line of said Block 19 to a point having Coordinates of X = 2,723,110.33 and Y = 141,182.00; thence South 47 degrees 48 minutes 22 seconds West 5,232.09 feet to a point on the West line of said Block 19, also being the East line of said Block 20 having Coordinates of X = 2,719,234.00 and Y = 137,667.91; thence South 47 degrees 48 minutes 22 seconds West 9,959.82 feet to a point having Coordinates of X = 2,711,855.00 and Y = 130,978.49; thence North 10,203.51 feet to the point of beginning, containing approximately 1,318.23 gross acres, **LESS AND EXCEPT** any privately owned land that may be located within the above described tract, if any, comprising approximately 0 acres, leaving a total of approximately **1,318.23 acres, LESS AND EXCEPT** any privately owned land that may be located within the above described Tract, leaving a total of 1,318.23 net acres of State owned land and water bottoms within the above described Tract, all as more particularly outlined on a plat on file in the Office of Mineral Resources, Department of Natural Resources. All bearings, distances and coordinates are based on Louisiana Coordinate System of 1927, (South Zone).

NOTE: The above description of the Tract nominated for lease has been provided and corrected, where required, exclusively by the nomination party. Any mineral lease selected from this Tract and awarded by the Louisiana State Mineral Board shall be without warranty of any kind, either express, implied, or statutory, including, but not limited to, the implied warranties of merchantability and fitness for a particular purpose. Should the mineral lease awarded by the Louisiana State Mineral Board be subsequently modified, cancelled or abrogated due to the existence of conflicting leases, operating agreements, private claims or other future obligations or conditions which may affect all or any portion of the leased Tract, it shall not relieve the Lessee of the obligation to pay any bonus due thereon to the Louisiana State Mineral Board, nor shall the Louisiana State Mineral Board be obligated to refund any consideration paid by the Lessor prior to such modification, cancellation, or abrogation, including, but not limited to, bonuses, rentals and royalties.

NOTE: The Office of Mineral Resources will require a minimum bonus of \$350 per acre and a minimum royalty of 25%.

NOTE: This tract is located in The Pass-a-Loutre WMA under the jurisdiction of the Louisiana Department of Wildlife and Fisheries which has promulgated rules and regulations for the protection of game and wildlife on the aforesaid Tract and, therefore, shall be subject to said rules and regulations, a copy of which shall be attached to the mineral lease. In addition to the specific rules and regulations applicable, the following shall apply regarding operations under this mineral lease:

- 1. No activities will be allowed without written authorization of the Louisiana Department of Wildlife and Fisheries. All projects will be coordinated and approved by the Pass-A-Loutre WMA Supervisor prior to any activities on the wildlife management area.*
- 2. Proposed projects will be evaluated on a case by case basis. Modifications to proposed project features including but not limited to access routes, well sites, flowlines and appurtenant structures may be required by the Louisiana Department of Wildlife and Fisheries.*
- 3. Compliance with the Pass-A-Loutre WMA regulations will be required unless otherwise specified by the Department.*
- 4. Compensatory mitigation will be required to offset unavoidable habitat impacts.*
- 5. Removal of all structures, facilities and equipment will be required within 120 days of abandonment unless otherwise agreed to by the Department.*
- 6. No activities will be allowed during the hunting season unless approved by the department.*
- 7. Prior to submitting applications for wetland permits to Federal and State permitting agencies, the leaseholder shall coordinate project details with the Department. Contact person for the Department will be Mike Windham at 504-568-5886 or (225) 765-2807.*
- 8. A minimum bonus of \$350.00 per acre and a minimum royalty of 25% will be required.*

NOTE: The State of Louisiana does hereby reserve, and this lease shall be subject to, the imprescriptible right of surface use in the nature of a servitude in favor of the Department of Natural Resources, including its Offices and Commissions, for the sole purpose of implementing, constructing, servicing and maintaining approved coastal zone management and/or restoration projects. Utilization of any and all rights derived under this lease by the mineral lessee, its agents, successors or assigns, shall not interfere with nor hinder the reasonable surface use by the Department of Natural Resources, its Offices or Commissions, as herein above reserved.

NOTE: It appears, according to our records, that a portion of this Tract is located within the restrictive safety fairway area as set out by the Corps of Engineers, U.S. Army and/or the restrictive anchorage area as set out by the U.S. Coast Guard.

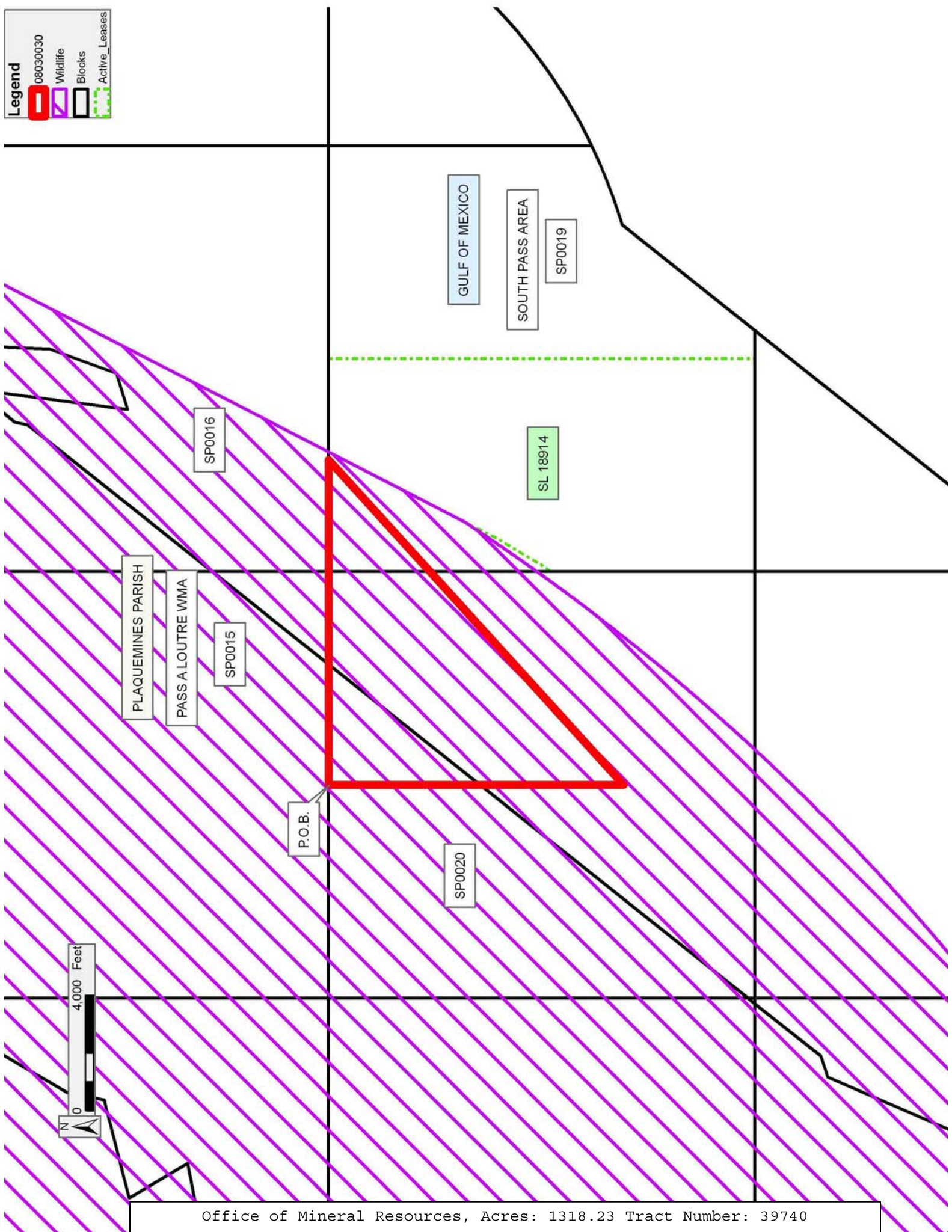
NOTE: The Department of Wildlife and Fisheries has designated certain areas in the coastal waters of the State of Louisiana as Oyster Seed Bed Areas. The exact location of those Seed Bed Areas must be obtained from the Department of Wildlife and Fisheries and any work done under a mineral lease from the State of Louisiana may necessarily be conducted in conformity with the rules and regulations promulgated by the said Department of Wildlife and Fisheries for Oyster Seed Bed Areas.

Applicant: OIL AND GAS RESOURCES, INC.

Bidder	Cash Payment	Price/Acre	Rental	Oil	Gas	Other

Legend

- 08030030
- Wildlife
- Blocks
- Active_Leases



TRACT 39741 - Plaquemines Parish, Louisiana

All State owned lands and water bottoms located within the boundaries of the Pass-A-Loutre Wildlife Management Area as defined by the Department of Wildlife and Fisheries incorporating a title opinion from the Office of the Governor dated August 3, 1998, not presently under mineral lease by the State of Louisiana on March 12, 2008, all as set forth following: Beginning at a point on the South line of Block 20, South Pass Area, having Coordinates of X = 2,711,855.00 and Y = 126,424.00; thence North 4,554.49 feet to a point having Coordinates of X = 2,711,855.00 and Y = 130,978.49; thence North 47 degrees 48 minutes 22 seconds East 9,959.82 feet to a point of intersection with the East line of said Block 20 having Coordinates of X = 2,719,234.00 and Y = 137,667.91; thence North 47 degrees 48 minutes 22 seconds East 5,232.09 feet to a point of intersection with the North line of Block 19, South Pass Area, having Coordinates of X = 2,723,110.33 and Y = 141,182.00; thence East 276.39 feet along the North line of said Block 19 to a point of intersection with the Eastern boundary of the Pass-A-Loutre Wildlife Management Area having Coordinates of X = 2,723,386.72 and Y = 141,182.00; thence along the Eastern boundary of said Pass-A-Loutre Wildlife Management Area the following courses: South 27 degrees 15 minutes 53 seconds West 5,263.96 feet to a point having Coordinates of X = 2,720,975.28 and Y = 136,502.87; Southwesterly along an arc to the right having a radius of 77,200.00 feet and a center at X = 2,656,474.99 and Y = 178,924.00 to a point of intersection with the East line of said Block 20 having Coordinates of X = 2,719,234.00 and Y = 133,966.84 and Southwesterly along an arc to the right having a radius of 77,200.00 feet and a center at X = 2,656,474.99 and Y = 178,924.00 to a point of intersection with the South line of said Block 20 having Coordinates of X = 2,713,075.25 and Y = 126,424.00; thence West 1,220.25 feet along the South line of said Block 20 to the point of beginning, containing approximately 1,039.41 gross acres, **LESS AND EXCEPT** any privately owned land that may be located within the above described tract, if any, comprising approximately 0 acres, **LESS AND EXCEPT** any privately owned land that may be located within the above described Tract, leaving a total of 1,039.41 net acres of State owned land and water bottoms within the above described Tract, all as more particularly outlined on a plat on file in the Office of Mineral Resources, Department of Natural Resources. All bearings, distances and coordinates are based on Louisiana Coordinate System of 1927, (South Zone).

NOTE: The above description of the Tract nominated for lease has been provided and corrected, where required, exclusively by the nomination party. Any mineral lease selected from this Tract and awarded by the Louisiana State Mineral Board shall be without warranty of any kind, either express, implied, or statutory, including, but not limited to, the implied warranties of merchantability and fitness for a particular purpose. Should the mineral lease awarded by the Louisiana State Mineral Board be subsequently modified, cancelled or abrogated due to the existence of conflicting leases, operating agreements, private claims or other future obligations or conditions which may affect all or any portion

of the leased Tract, it shall not relieve the Lessee of the obligation to pay any bonus due thereon to the Louisiana State Mineral Board, nor shall the Louisiana State Mineral Board be obligated to refund any consideration paid by the Lessor prior to such modification, cancellation, or abrogation, including, but not limited to, bonuses, rentals and royalties.

NOTE: The Office of Mineral Resources will require a minimum bonus of \$350 per acre and a minimum royalty of 25%.

NOTE: This tract is located in The Pass-a-Loutre WMA under the jurisdiction of the Louisiana Department of Wildlife and Fisheries which has promulgated rules and regulations for the protection of game and wildlife on the aforesaid Tract and, therefore, shall be subject to said rules and regulations, a copy of which shall be attached to the mineral lease. In addition to the specific rules and regulations applicable, the following shall apply regarding operations under this mineral lease:

- 1. No activities will be allowed without written authorization of the Louisiana Department of Wildlife and Fisheries. All projects will be coordinated and approved by the Pass-A-Loutre WMA Supervisor prior to any activities on the wildlife management area.*
- 2. Proposed projects will be evaluated on a case by case basis. Modifications to proposed project features including but not limited to access routes, well sites, flowlines and appurtenant structures may be required by the Louisiana Department of Wildlife and Fisheries.*
- 3. Compliance with the Pass-A-Loutre WMA regulations will be required unless otherwise specified by the Department.*
- 4. Compensatory mitigation will be required to offset unavoidable habitat impacts.*
- 5. Removal of all structures, facilities and equipment will be required within 120 days of abandonment unless otherwise agreed to by the Department.*
- 6. No activities will be allowed during the hunting season unless approved by the department.*
- 7. Prior to submitting applications for wetland permits to Federal and State permitting agencies, the leaseholder shall coordinate project details with the Department. Contact person for the Department will be Mike Windham at 504-568-5886 or (225) 765-2807.*
- 8. A minimum bonus of \$350.00 per acre and a minimum royalty of 25% will be required.*

NOTE: The State of Louisiana does hereby reserve, and this lease shall be subject to, the imprescriptible right of surface use in the nature of a servitude in favor of the Department of Natural Resources, including its Offices and Commissions, for the sole purpose of implementing, constructing, servicing and maintaining approved coastal zone management and/or restoration projects. Utilization of any and all rights derived under this lease by the mineral lessee, its agents, successors or assigns, shall not interfere with nor hinder the reasonable surface use by the

Department of Natural Resources, its Offices or Commissions, as herein above reserved.





NOTE: It appears, according to our records, that a portion of this Tract is located within the restrictive safety fairway area as set out by the Corps of Engineers, U.S. Army and/or the restrictive anchorage area as set out by the U.S. Coast Guard.

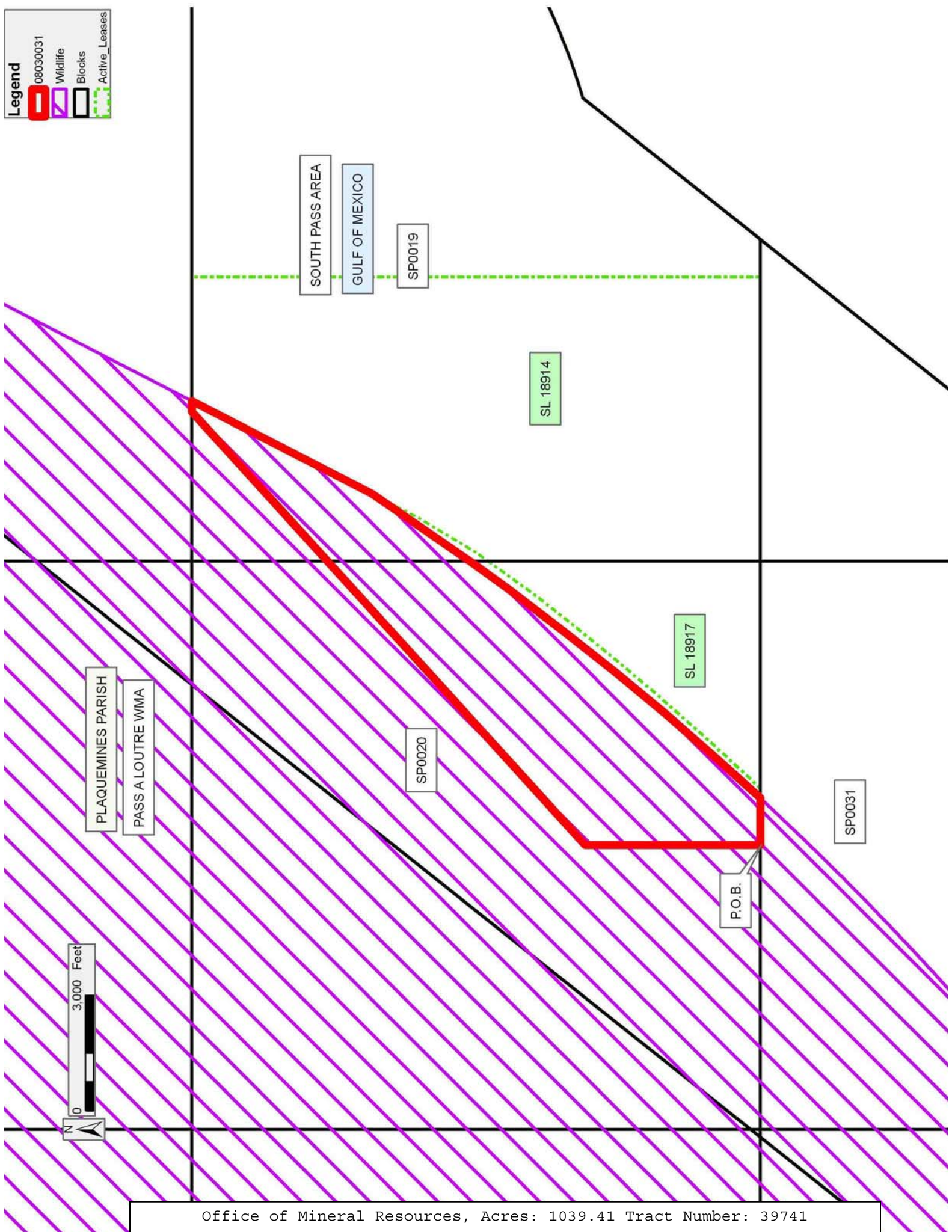
NOTE: The Department of Wildlife and Fisheries has designated certain areas in the coastal waters of the State of Louisiana as Oyster Seed Bed Areas. The exact location of those Seed Bed Areas must be obtained from the Department of Wildlife and Fisheries and any work done under a mineral lease from the State of Louisiana may necessarily be conducted in conformity with the rules and regulations promulgated by the said Department of Wildlife and Fisheries for Oyster Seed Bed Areas.

Applicant: OIL AND GAS RESOURCES, INC.

Bidder	Cash Payment	Price/Acre	Rental	Oil	Gas	Other

Legend

-  08030031
-  Wildlife
-  Blocks
-  Active_Leases



TRACT 39742 - Plaquemines Parish, Louisiana

All State owned lands and water bottoms located within the boundaries of the Pass-A-Loutre Wildlife Management Area as defined by the Department of Wildlife and Fisheries incorporating a title opinion from the Office of the Governor dated August 3, 1998, not presently under mineral lease by the State of Louisiana on March 12, 2008, all as set forth following: Beginning at the Southwest corner of Block 20, South Pass Area, having Coordinates of X = 2,704,476.00 and Y = 126,424.00; thence North 273.14 feet along the West line of said Block 20 to a point having Coordinates of X = 2,704,476.00 and Y = 126,697.14; thence North 42 degrees 03 minutes 38 seconds East 3,023.60 feet to a point having Coordinates of X = 2,706,501.56 and Y = 128,941.97; thence South 68 degrees 00 minutes 24 seconds East 2,317.18 feet to a point having Coordinates of X = 2,708,650.11 and Y = 128,074.19; thence North 47 degrees 49 minutes 01 seconds East 4,325.08 feet to a point having Coordinates of X = 2,711,855.00 and Y = 130,978.49; thence South 4,554.49 feet to a point on the South line of said Block 20 having Coordinates of X = 2,711,855.00 and Y = 126,424.00; thence West 7,379.00 feet along the South line of said Block 20 to the point of beginning, containing approximately 395.94 gross acres, **LESS AND EXCEPT** any privately owned land that may be located within the above described tract, if any, comprising approximately 0 acres, leaving a total of approximately **395.94 acres**, leaving a total of 395.94 net acres of State owned land and water bottoms within the above described Tract, all as more particularly outlined on a plat on file in the Office of Mineral Resources, Department of Natural Resources. All bearings, distances and coordinates are based on Louisiana Coordinate System of 1927, (South Zone).

NOTE: The above description of the Tract nominated for lease has been provided and corrected, where required, exclusively by the nomination party. Any mineral lease selected from this Tract and awarded by the Louisiana State Mineral Board shall be without warranty of any kind, either express, implied, or statutory, including, but not limited to, the implied warranties of merchantability and fitness for a particular purpose. Should the mineral lease awarded by the Louisiana State Mineral Board be subsequently modified, cancelled or abrogated due to the existence of conflicting leases, operating agreements, private claims or other future obligations or conditions which may affect all or any portion of the leased Tract, it shall not relieve the Lessee of the obligation to pay any bonus due thereon to the Louisiana State Mineral Board, nor shall the Louisiana State Mineral Board be obligated to refund any consideration paid by the Lessor prior to such modification, cancellation, or abrogation, including, but not limited to, bonuses, rentals and royalties.

NOTE: The Office of Mineral Resources will require a minimum bonus of \$350 per acre and a minimum royalty of 25%.

NOTE: This tract is located in The Pass-a-Loutre WMA under the jurisdiction of the Louisiana Department of Wildlife and Fisheries which has promulgated rules and regulations for the protection of game and wildlife on

the aforesaid Tract and, therefore, shall be subject to said rules and regulations, a copy of which shall be attached to the mineral lease. In addition to the specific rules and regulations applicable, the following shall apply regarding operations under this mineral lease:

- 1. No activities will be allowed without written authorization of the Louisiana Department of Wildlife and Fisheries. All projects will be coordinated and approved by the Pass-A-Loutre WMA Supervisor prior to any activities on the wildlife management area.*
- 2. Proposed projects will be evaluated on a case by case basis. Modifications to proposed project features including but not limited to access routes, well sites, flowlines and appurtenant structures may be required by the Louisiana Department of Wildlife and Fisheries.*
- 3. Compliance with the Pass-A-Loutre WMA regulations will be required unless otherwise specified by the Department.*
- 4. Compensatory mitigation will be required to offset unavoidable habitat impacts.*
- 5. Removal of all structures, facilities and equipment will be required within 120 days of abandonment unless otherwise agreed to by the Department.*
- 6. No activities will be allowed during the hunting season unless approved by the department.*
- 7. Prior to submitting applications for wetland permits to Federal and State permitting agencies, the leaseholder shall coordinate project details with the Department. Contact person for the Department will be Mike Windham at 504-568-5886 or (225) 765-2807.*
- 8. A minimum bonus of \$350.00 per acre and a minimum royalty of 25% will be required.*

NOTE: The State of Louisiana does hereby reserve, and this lease shall be subject to, the imprescriptible right of surface use in the nature of a servitude in favor of the Department of Natural Resources, including its Offices and Commissions, for the sole purpose of implementing, constructing, servicing and maintaining approved coastal zone management and/or restoration projects. Utilization of any and all rights derived under this lease by the mineral lessee, its agents, successors or assigns, shall not interfere with nor hinder the reasonable surface use by the Department of Natural Resources, its Offices or Commissions, as herein above reserved.

NOTE: It appears, according to our records, that a portion of this Tract is located within the restrictive safety fairway area as set out by the Corps of Engineers, U.S. Army and/or the restrictive anchorage area as set out by the U.S. Coast Guard.

NOTE: The Department of Wildlife and Fisheries has designated certain areas in the coastal waters of the State of Louisiana as Oyster Seed Bed Areas. The exact location of those Seed Bed Areas must be obtained from

the Department of Wildlife and Fisheries and any work done under a mineral lease from the State of Louisiana may necessarily be conducted in conformity with the rules and regulations promulgated by the said Department of Wildlife and Fisheries for Oyster Seed Bed Areas.

Applicant: OIL AND GAS RESOURCES, INC.

Bidder	Cash Payment	Price/Acre	Rental	Oil	Gas	Other

Legend

- 08030034
- Wildlife
- Blocks

