

TRACT 39711 - Portion of Block 49, Breton Sound Area, Plaquemines Parish, Louisiana

All of the lands now or formerly constituting the beds and bottoms of all water bodies of every nature and description as to which title is vested in the State of Louisiana, together with all islands arising therein and other lands formed by accretion or by reliction, where allowed by law, excepting tax adjudicated lands, and not presently under mineral lease on March 12, 2008, situated in Plaquemines Parish, Louisiana, and more particularly described as follows: Beginning at the Northwest corner of Block 49, Breton Sound Area, having Coordinates of X = 2,635,350.00 and Y = 292,830.00; thence East 801.00 feet to a point having Coordinates of X = 2,636,151.00 and Y = 292,830.00; thence South 1,639.00 feet to a point having Coordinates of X = 2,636,151.00 and Y = 291,191.00; thence East 2,485.00 feet to a point having Coordinates of X = 2,638,636.00 and Y = 291,191.00; thence North 1,639.00 feet to a point having Coordinates of X = 2,638,636.00 and Y = 292,830.00; thence East 520.00 feet along the North line of said Block 49 to a point having Coordinates of X = 2,639,156.00 and Y = 292,830.00; thence South 4,278.00 feet to a point having Coordinates of X = 2,639,156.00 and Y = 288,552.00; thence East 3,525.00 feet to a point having Coordinates of X = 2,642,681.00 and Y = 288,552.00; thence South 5,466.09 feet to a point on the North boundary of State Lease No. 18625 having Coordinates of X = 2,642,681.00 and Y = 283,085.91; thence along the North boundary of said State Lease No. 18625 the following courses: North 55 degrees 41 minutes 32 seconds West 1,550.81 feet to a point having Coordinates of X = 2,641,400.00 and Y = 283,960.00 and West 4,250.00 feet to its Northwest corner also being a point on the East boundary of State Lease No. 18164 having Coordinates of X = 2,637,150.00 and Y = 283,960.00; thence along the East and North boundary of said State Lease No. 18164 the following courses: North 627.00 feet to a point having Coordinates of X = 2,637,150.00 and Y = 284,587.00 and West 1,800.00 feet to its Northwest corner located on the West line of said Block 49 having Coordinates of X = 2,635,350.00 and Y = 284,587.00; thence North 8,243.00 feet along the West line of said Block 49 to the point of beginning, containing approximately **1,040.05 acres**, all as more particularly outlined on a plat on file in the Office of Mineral Resources, Department of Natural Resources. All bearings, distances and coordinates are based on Louisiana Coordinate System of 1927, (North or South Zone), where applicable.

NOTE: The above description of the Tract nominated for lease has been provided and corrected, where required, exclusively by the nomination party. Any mineral lease selected from this Tract and awarded by the Louisiana State Mineral Board shall be without warranty of any kind, either express, implied, or statutory, including, but not limited to, the implied warranties of merchantability and fitness for a particular purpose. Should the mineral lease awarded by the Louisiana State Mineral Board be subsequently modified, cancelled or abrogated due to the existence of conflicting leases, operating agreements, private claims or other future obligations or conditions which may affect all or any portion

of the leased Tract, it shall not relieve the Lessee of the obligation to pay any bonus due thereon to the Louisiana State Mineral Board, nor shall the Louisiana State Mineral Board be obligated to refund any consideration paid by the Lessor prior to such modification, cancellation, or abrogation, including, but not limited to, bonuses, rentals and royalties.

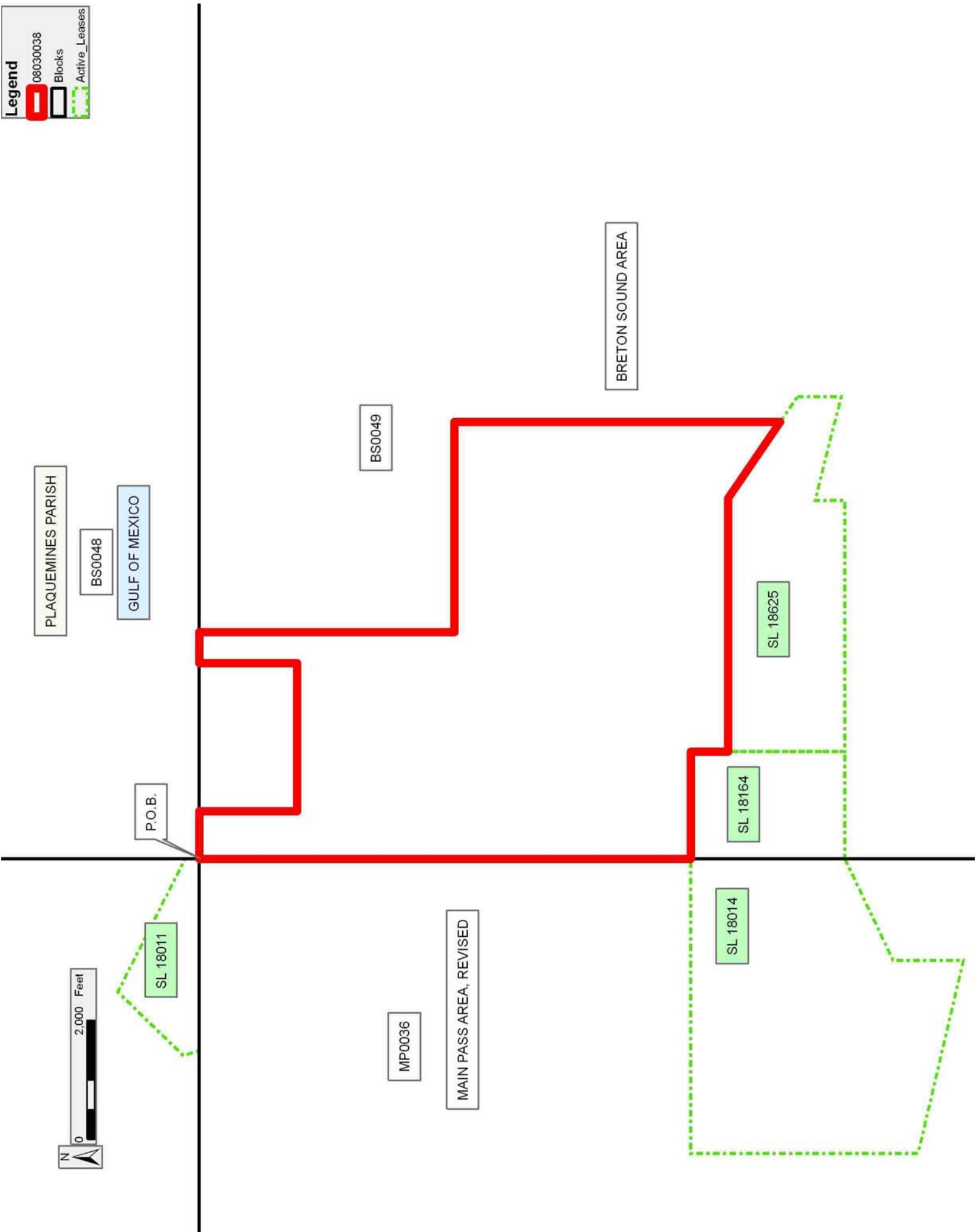
NOTE: The State of Louisiana does hereby reserve, and this lease shall be subject to, the imprescriptible right of surface use in the nature of a servitude in favor of the Department of Natural Resources, including its Offices and Commissions, for the sole purpose of implementing, constructing, servicing and maintaining approved coastal zone management and/or restoration projects. Utilization of any and all rights derived under this lease by the mineral lessee, its agents, successors or assigns, shall not interfere with nor hinder the reasonable surface use by the Department of Natural Resources, its Offices or Commissions, as herein above reserved.

Applicant: CYPRESS ENERGY CORPORATION

Bidder	Cash Payment	Price/Acre	Rental	Oil	Gas	Other

Legend

- 08030038
- Blocks
- Active_Leases



TRACT 39712 - Portion of Block 49, Breton Sound Area, and Block 48, Main Pass Area, Revised, Plaquemines Parish, Louisiana

All of the lands now or formerly constituting the beds and bottoms of all water bodies of every nature and description as to which title is vested in the State of Louisiana, together with all islands arising therein and other lands formed by accretion or by reliction, where allowed by law, excepting tax adjudicated lands, and not presently under mineral lease on March 12, 2008, situated in Plaquemines Parish, Louisiana, and more particularly described as follows: Beginning at the Northwest corner of Block 48, Main Pass Area, Revised, said point also being the Southwest corner of Block 49, Breton Sound Area, having Coordinates of X = 2,635,350.00 and Y = 278,080.00; thence North 3,920.00 feet along West line of said Block 49 to the Southwest corner of State Lease No. 18164 having Coordinates of X = 2,635,350.00 and Y = 282,000.00; thence East 1,800.00 feet along the South boundary of said State Lease No. 18164 to its Southeast corner also being the Southwest corner of State Lease No. 18625 having Coordinates of X = 2,637,150.00 and Y = 282,000.00; thence along the South boundary of said State Lease No. 18625 the following courses and distances: East 4,215.00 feet to a corner having Coordinates of X = 2,641,365.00 and Y = 282,000.00, North 500.00 feet to a corner having Coordinates of X = 2,641,365.00 and Y = 282,500.00 and South 75 degrees 51 minutes 46 seconds East 1,357.10 feet to a point having Coordinates of X = 2,642,681.00 and Y = 282,168.54; thence South 4,088.54 feet to a point on the South line of said Block 49, also a point on the North line of said Block 48 having Coordinates of X = 2,642,681.00 and Y = 278,080.00; thence East 4,669.00 feet along the North line of said Block 48 to its Northeast corner having Coordinates of X = 2,647,350.00 and Y = 278,080.00; thence South 6,600.00 feet along the East line of said Block 48 to a point having Coordinates of X = 2,647,350.00 and Y = 271,480.00; thence West 12,000.00 feet to a point on the West line of said Block 48 having Coordinates of X = 2,635,350.00 and Y = 271,480.00; thence North 6,600.00 feet along the West line of said Block 48 to the point of beginning, **LESS AND EXCEPT** that portion of State Lease No. 19447 that lies entirely within the above described tract and being more particularly described as follows: Commencing at a point being the point of beginning of the above described nominated tract having coordinates of X = 2,635,350.00 and Y = 278,080.00; thence North 82 degrees 53 minutes 19 seconds East to a point being the point of beginning of said State Lease No. 19447 having Coordinates of X = 2,637,947.00 and Y = 278,404.00; thence North 59 degrees 58 minutes 06 seconds West 1,412.65 feet to a corner having Coordinates of X = 2,636,724.00 and Y = 279,111.00; thence North 1,062.00 feet to a corner having Coordinates of X = 2,636,724.00 and Y = 280,173.00; thence East 1,100.00 feet to a corner having Coordinates of X = 2,637,824.00 and Y = 280,173.00; thence South 43 degrees 00 minutes 03 seconds East 2,432.51 feet to a corner having Coordinates of X = 2,639,483.00 and Y = 278,394.00; thence North 89 degrees 37 minutes 37 seconds West 1,536.03 feet to the point of beginning, the nominated tract containing approximately **2,419.58 acres**, all as more particularly outlined on a plat on file in the Office of Mineral Resources, Department of

Natural Resources. All bearings, distances and coordinates are based on Louisiana Coordinate System of 1927, (North or South Zone), where applicable.

NOTE: The above description of the Tract nominated for lease has been provided and corrected, where required, exclusively by the nomination party. Any mineral lease selected from this Tract and awarded by the Louisiana State Mineral Board shall be without warranty of any kind, either express, implied, or statutory, including, but not limited to, the implied warranties of merchantability and fitness for a particular purpose. Should the mineral lease awarded by the Louisiana State Mineral Board be subsequently modified, cancelled or abrogated due to the existence of conflicting leases, operating agreements, private claims or other future obligations or conditions which may affect all or any portion of the leased Tract, it shall not relieve the Lessee of the obligation to pay any bonus due thereon to the Louisiana State Mineral Board, nor shall the Louisiana State Mineral Board be obligated to refund any consideration paid by the Lessor prior to such modification, cancellation, or abrogation, including, but not limited to, bonuses, rentals and royalties.

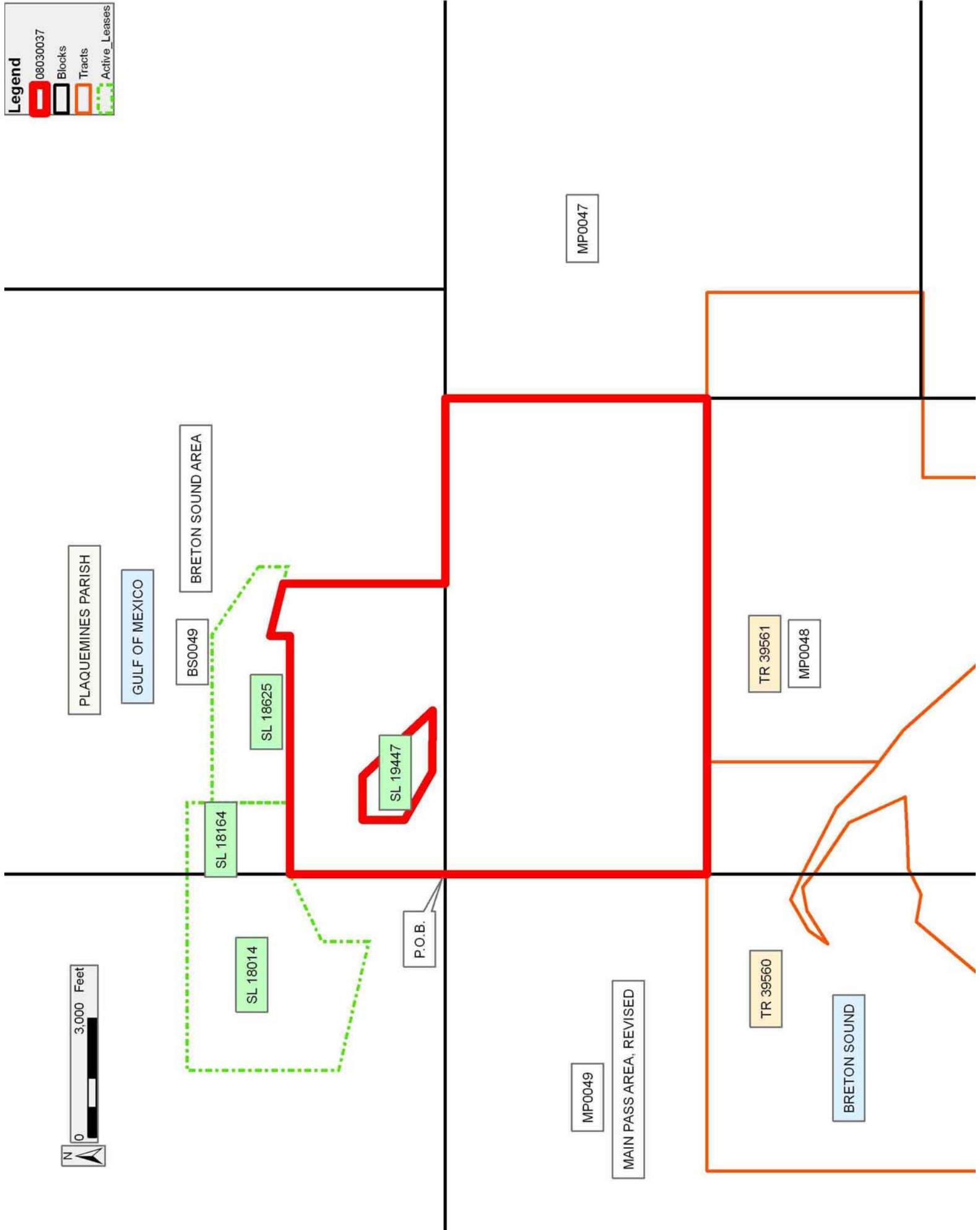
NOTE: The State of Louisiana does hereby reserve, and this lease shall be subject to, the imprescriptible right of surface use in the nature of a servitude in favor of the Department of Natural Resources, including its Offices and Commissions, for the sole purpose of implementing, constructing, servicing and maintaining approved coastal zone management and/or restoration projects. Utilization of any and all rights derived under this lease by the mineral lessee, its agents, successors or assigns, shall not interfere with nor hinder the reasonable surface use by the Department of Natural Resources, its Offices or Commissions, as herein above reserved.

Applicant: CYPRESS ENERGY CORPORATION

Bidder	Cash Payment	Price/Acre	Rental	Oil	Gas	Other

Legend

- 08030037
- Blocks
- Tracts
- Active_Leases



TRACT 39713 - Portion of Block 49, Main Pass Area, Revised, Plaquemines Parish, Louisiana

All of the lands now or formerly constituting the beds and bottoms of all water bodies of every nature and description as to which title is vested in the State of Louisiana, together with all islands arising therein and other lands formed by accretion or by reliction, where allowed by law, excepting tax adjudicated lands, and not presently under mineral lease on March 12, 2008, situated in Plaquemines Parish, Louisiana, and more particularly described as follows: Beginning at the Southwest corner of State Lease No. 19001 said point located on the West Line of Block 49, Main Pass Area, Revised, having Coordinates of X = 2,620,600.00 and Y = 274,837.00; thence along the South, East and Northeast boundary of said State Lease No. 19001 the following courses and distances: East 5,739.00 feet to a corner having Coordinates of X = 2,626,339.00 and Y = 274,837.00, North 2,222.00 feet to a corner having Coordinates of X = 2,626,339.00 and Y = 277,059.00 and North 49 degrees 53 minutes 13 seconds West 1,584.67 feet to its Northeast corner located on the North line of said Block 49 having Coordinates of X = 2,625,127.09 and Y = 278,080.00; thence East 5,375.91 feet along the North line of said Block 49 to a point having Coordinates of X = 2,630,503.00 and Y = 278,080.00; thence South 41.00 feet to the Northwest corner of State Lease No. 19445, having Coordinates of X = 2,630,503.00 and Y = 278,039.00; thence along the West and South boundary of said State Lease No. 19445 the following courses and distances: South 944.00 feet to a corner having Coordinates of X = 2,630,503.00 and Y = 277,095.00 and South 81 degrees 21 minutes 32 seconds East 2,525.67 feet to its Southeast corner, also being the Southwest corner of State Lease No. 19446 having Coordinates of X = 2,633,000.00 and Y = 276,715.53; thence along the South and East boundary of said State Lease No. 19446 the following courses and distances: South 81 degrees 21 minutes 32 seconds East 1,580.95 feet to a corner having Coordinates of X = 2,634,563.00 and Y = 276,478.00 and North 1,561.00 feet to its Northeast corner having Coordinates of X = 2,634,563.00 and Y = 278,039.00; thence North 41.00 feet to a point on the North line of said Block 49 having Coordinates of X = 2,634,563.00 and Y = 278,080.00; thence East 787.00 feet along the North line of said Block 49 to its Northeast corner having Coordinates of X = 2,635,350.00 and Y = 278,080.00; thence South 6,600.00 feet along the East line of said Block 49 to a point having Coordinates of X = 2,635,350.00 and Y = 271,480.00; thence West 14,750.00 feet to a point on the West line of said Block 49 having Coordinates of X = 2,620,600.00 and Y = 271,480.00; thence North 3,357.00 feet along the West line of said Block 49 to the point of beginning, containing approximately **1,701.23 acres**, all as more particularly outlined on a plat on file in the Office of Mineral Resources, Department of Natural Resources. All bearings, distances and coordinates are based on Louisiana Coordinate System of 1927, (North or South Zone), where applicable.

NOTE: The above description of the Tract nominated for lease has been provided and corrected, where required, exclusively by the nomination party. Any mineral lease selected from this Tract and awarded by the

Louisiana State Mineral Board shall be without warranty of any kind, either express, implied, or statutory, including, but not limited to, the implied warranties of merchantability and fitness for a particular purpose. Should the mineral lease awarded by the Louisiana State Mineral Board be subsequently modified, cancelled or abrogated due to the existence of conflicting leases, operating agreements, private claims or other future obligations or conditions which may affect all or any portion of the leased Tract, it shall not relieve the Lessee of the obligation to pay any bonus due thereon to the Louisiana State Mineral Board, nor shall the Louisiana State Mineral Board be obligated to refund any consideration paid by the Lessor prior to such modification, cancellation, or abrogation, including, but not limited to, bonuses, rentals and royalties.





NOTE: The State of Louisiana does hereby reserve, and this lease shall be subject to, the imprescriptible right of surface use in the nature of a servitude in favor of the Department of Natural Resources, including its Offices and Commissions, for the sole purpose of implementing, constructing, servicing and maintaining approved coastal zone management and/or restoration projects. Utilization of any and all rights derived under this lease by the mineral lessee, its agents, successors or assigns, shall not interfere with nor hinder the reasonable surface use by the Department of Natural Resources, its Offices or Commissions, as herein above reserved.

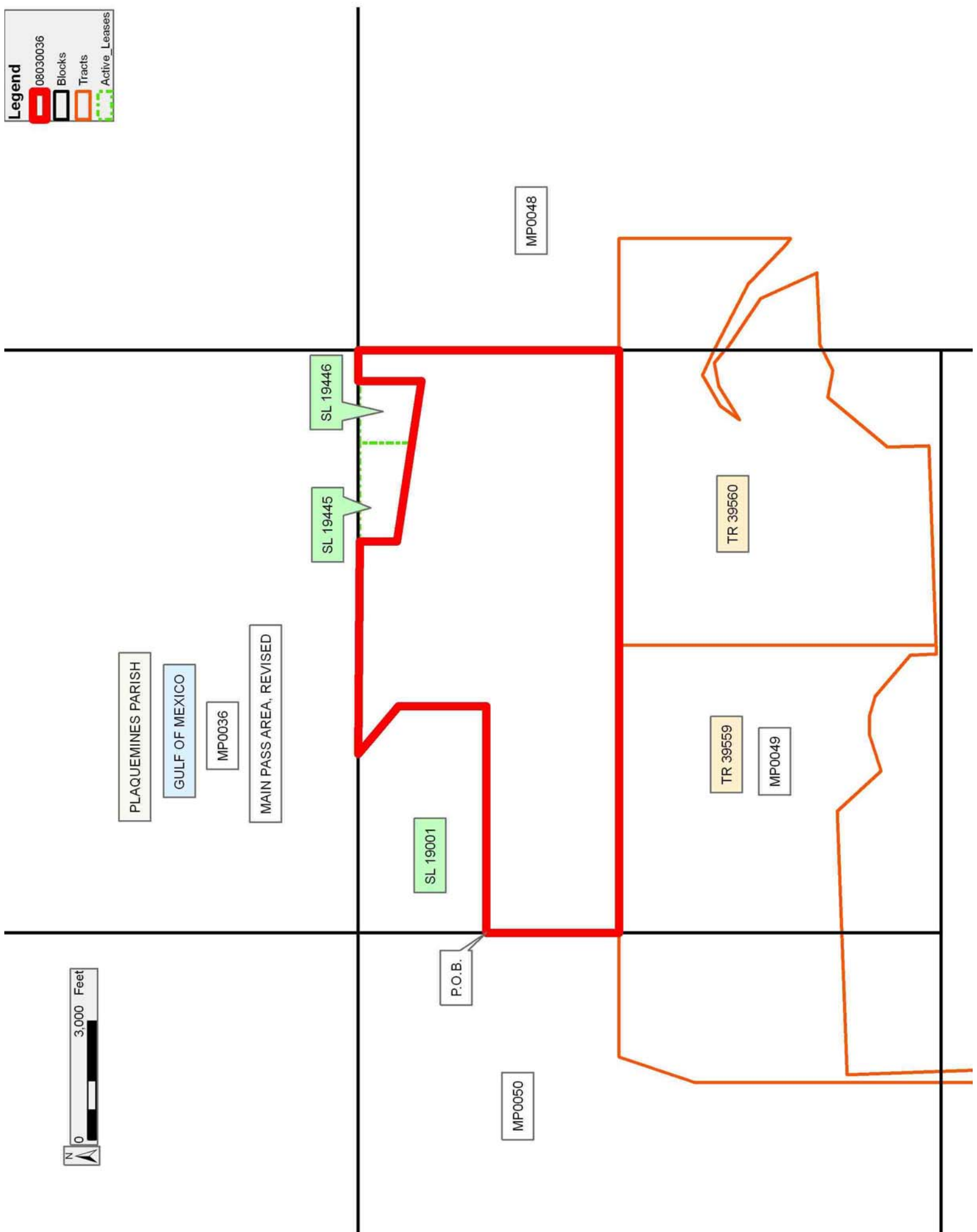
NOTE: The Department of Wildlife and Fisheries has designated certain areas in the coastal waters of the State of Louisiana as Oyster Seed Bed Areas. The exact location of those Seed Bed Areas must be obtained from the Department of Wildlife and Fisheries and any work done under a mineral lease from the State of Louisiana may necessarily be conducted in conformity with the rules and regulations promulgated by the said Department of Wildlife and Fisheries for Oyster Seed Bed Areas.

Applicant: CYPRESS ENERGY CORPORATION

Bidder	Cash Payment	Price/Acre	Rental	Oil	Gas	Other

Legend

-  08030036
-  Blocks
-  Tracts
-  Active_Leases



TRACT 39714 - Lafourche Parish, Louisiana

All of the lands now or formerly constituting the beds and bottoms of all water bodies of every nature and description as to which title is vested in the State of Louisiana, together with all islands arising therein and other lands formed by accretion or by reliction, where allowed by law, excepting tax adjudicated lands, and not presently under mineral lease on March 12, 2008, situated in Lafourche Parish, Louisiana, and more particularly described as follows: Beginning at a Point having Coordinates of X = 2,333,905.70 and Y = 168,886.70; Thence North 21 degrees 02 minutes 12 seconds West 3,013.66 feet to a point having Coordinates of X = 2,332,823.90 and Y = 171,699.50; Thence North 68 degrees 34 minutes 12 seconds East 11,987.24 feet to a point having Coordinates of X = 2,343,982.40 and Y = 176,079.20; Thence South 21 degrees 39 minutes 05 seconds East 13,476.85 feet to a point having Coordinates of X = 2,348,954.80 and Y = 163,553.20; Thence South 68 degrees 29 minutes 51 seconds West 4,468.82 feet to a point having Coordinates of X = 2,344,797.00 and Y = 161,915.20; Thence North 21 degrees 59 minutes 40 seconds West 10,486.07 feet to a point having Coordinates of X = 2,340,869.80 and Y = 171,638.10; Thence South 68 degrees 26 minutes 31 seconds West 7,487.92 feet to the point of beginning, containing approximately **1,807 acres**, all as more particularly outlined on a plat on file in the Office of Mineral Resources, Department of Natural Resources. All bearings, distances and coordinates are based on Louisiana Coordinate System of 1927, (North or South Zone), where applicable.

NOTE: The above description of the Tract nominated for lease has been provided and corrected, where required, exclusively by the nomination party. Any mineral lease selected from this Tract and awarded by the Louisiana State Mineral Board shall be without warranty of any kind, either express, implied, or statutory, including, but not limited to, the implied warranties of merchantability and fitness for a particular purpose. Should the mineral lease awarded by the Louisiana State Mineral Board be subsequently modified, cancelled or abrogated due to the existence of conflicting leases, operating agreements, private claims or other future obligations or conditions which may affect all or any portion of the leased Tract, it shall not relieve the Lessee of the obligation to pay any bonus due thereon to the Louisiana State Mineral Board, nor shall the Louisiana State Mineral Board be obligated to refund any consideration paid by the Lessor prior to such modification, cancellation, or abrogation, including, but not limited to, bonuses, rentals and royalties.

NOTE: The Office of Mineral Resources will require a minimum bonus of \$200.00 per acre and a minimum royalty of 22.5%.

NOTE: The State of Louisiana does hereby reserve, and this lease shall be subject to, the imprescriptible right of surface use in the nature of a servitude in favor of the Department of Natural Resources, including its Offices and Commissions, for the sole purpose of implementing, constructing, servicing and maintaining approved coastal zone management

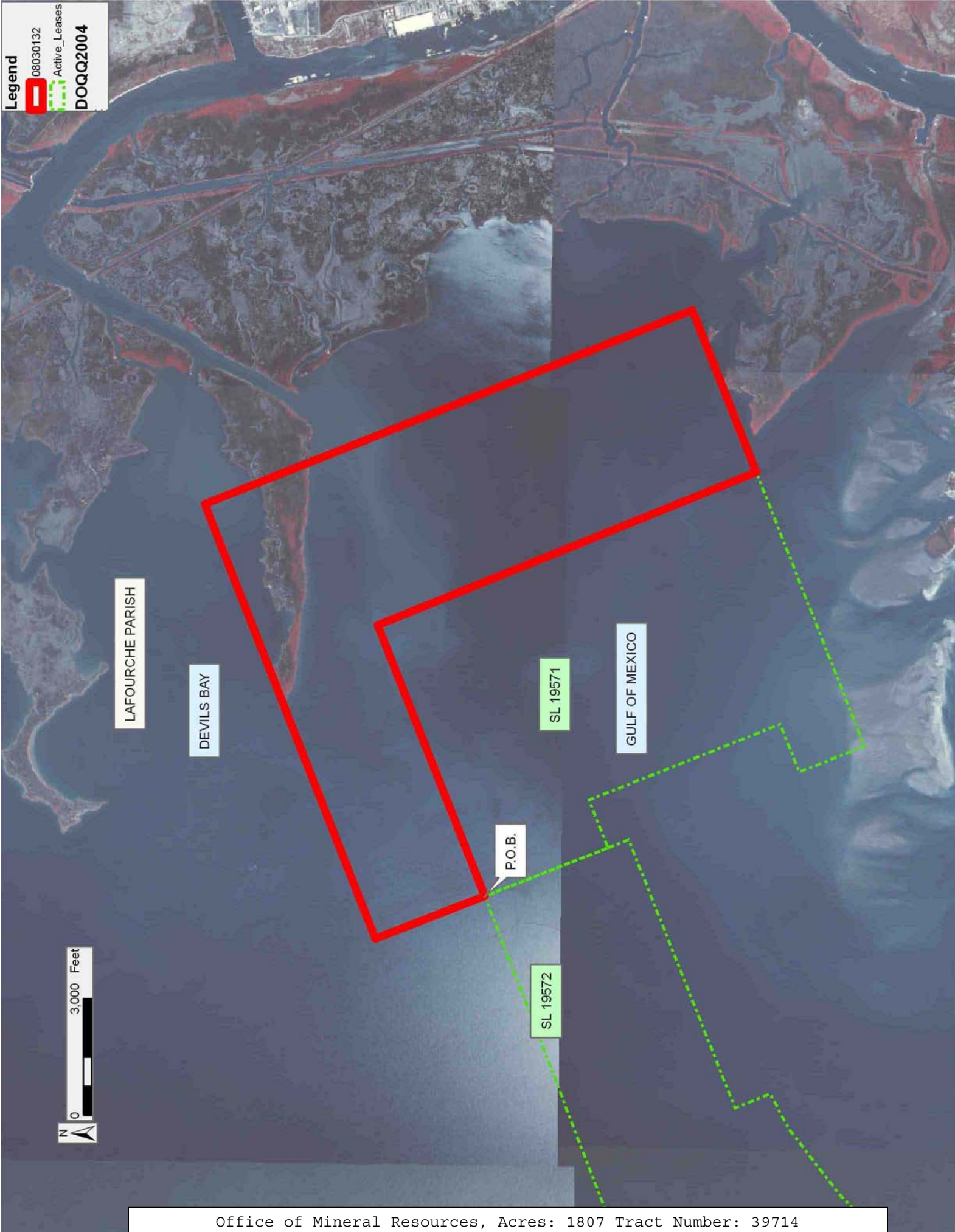
and/or restoration projects. Utilization of any and all rights derived under this lease by the mineral lessee, its agents, successors or assigns, shall not interfere with nor hinder the reasonable surface use by the Department of Natural Resources, its Offices or Commissions, as herein above reserved.

NOTE: The Department of Wildlife and Fisheries has designated certain areas in the coastal waters of the State of Louisiana as Oyster Seed Bed Areas. The exact location of those Seed Bed Areas must be obtained from the Department of Wildlife and Fisheries and any work done under a mineral lease from the State of Louisiana may necessarily be conducted in conformity with the rules and regulations promulgated by the said Department of Wildlife and Fisheries for Oyster Seed Bed Areas.

Applicant: AUDUBON OIL AND GAS CORPORATION

Bidder	Cash Payment	Price/Acre	Rental	Oil	Gas	Other

Legend
08030132
Active_Leases
DOQQ2004



TRACT 39715 - Lafourche Parish, Louisiana

All of the lands now or formerly constituting the beds and bottoms of all water bodies of every nature and description as to which title is vested in the State of Louisiana, together with all islands arising therein and other lands formed by accretion or by reliction, where allowed by law, excepting tax adjudicated lands, and not presently under mineral lease on March 12, 2008, situated in Lafourche Parish, Louisiana, and more particularly described as follows: Beginning at a Point having Coordinates of X = 2,320,776.00 and Y = 166,985.60; Thence North 68 degrees 37 minutes 53 seconds East 12,937.26 feet to a point having Coordinates of X = 2,332,823.90 and Y = 171,699.50; Thence South 21 degrees 02 minutes 12 seconds East 3,013.66 feet to a point having Coordinates of X = 2,333,905.70 and Y = 168,886.70; Thence South 68 degrees 57 minutes 44 seconds West 12,954.07 feet to a point having Coordinates of X = 2,321,815.10 and Y = 164,236.40; Thence North 20 degrees 42 minutes 17 seconds West 2,939.02 feet to the point of beginning, containing approximately **884.52 acres**, all as more particularly outlined on a plat on file in the Office of Mineral Resources, Department of Natural Resources. All bearings, distances and coordinates are based on Louisiana Coordinate System of 1927, (North or South Zone), where applicable.

NOTE: The above description of the Tract nominated for lease has been provided and corrected, where required, exclusively by the nomination party. Any mineral lease selected from this Tract and awarded by the Louisiana State Mineral Board shall be without warranty of any kind, either express, implied, or statutory, including, but not limited to, the implied warranties of merchantability and fitness for a particular purpose. Should the mineral lease awarded by the Louisiana State Mineral Board be subsequently modified, cancelled or abrogated due to the existence of conflicting leases, operating agreements, private claims or other future obligations or conditions which may affect all or any portion of the leased Tract, it shall not relieve the Lessee of the obligation to pay any bonus due thereon to the Louisiana State Mineral Board, nor shall the Louisiana State Mineral Board be obligated to refund any consideration paid by the Lessor prior to such modification, cancellation, or abrogation, including, but not limited to, bonuses, rentals and royalties.

NOTE: The Office of Mineral Resources will require a minimum bonus of \$200.00 per acre and a minimum royalty of 22.5%.

NOTE: The State of Louisiana does hereby reserve, and this lease shall be subject to, the imprescriptible right of surface use in the nature of a servitude in favor of the Department of Natural Resources, including its Offices and Commissions, for the sole purpose of implementing, constructing, servicing and maintaining approved coastal zone management and/or restoration projects. Utilization of any and all rights derived under this lease by the mineral lessee, its agents, successors or assigns, shall not interfere with nor hinder the reasonable surface use by the

Department of Natural Resources, its Offices or Commissions, as herein above reserved.

NOTE: The Department of Wildlife and Fisheries has designated certain areas in the coastal waters of the State of Louisiana as Oyster Seed Bed Areas. The exact location of those Seed Bed Areas must be obtained from the Department of Wildlife and Fisheries and any work done under a mineral lease from the State of Louisiana may necessarily be conducted in conformity with the rules and regulations promulgated by the said Department of Wildlife and Fisheries for Oyster Seed Bed Areas.

Applicant: AUDUBON OIL AND GAS CORPORATION

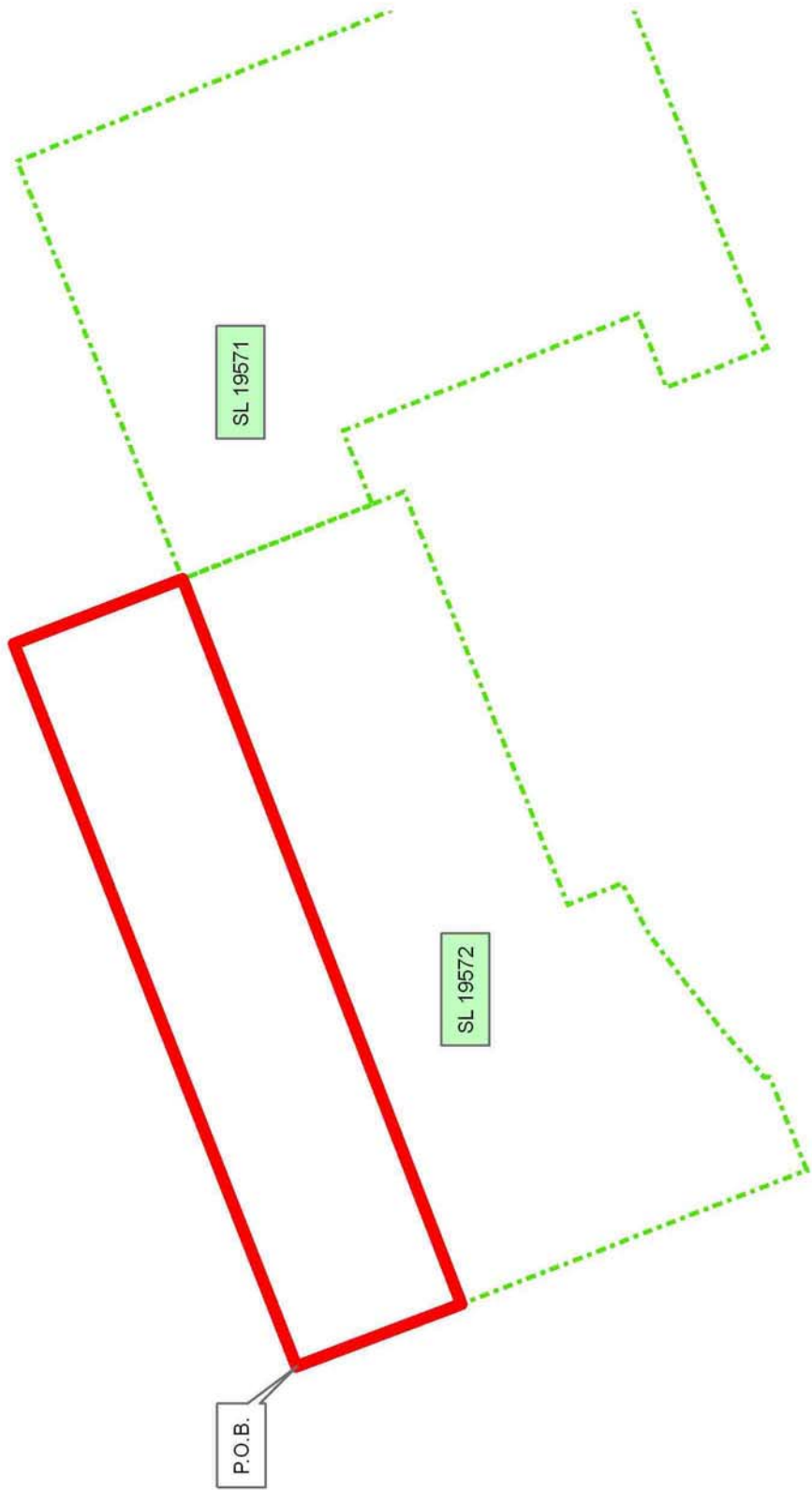
Bidder	Cash Payment	Price/Acre	Rental	Oil	Gas	Other

Legend
08030131
Active_Leases



LAFOURCHE PARISH

GULF OF MEXICO



TRACT 39716 - Lafourche Parish, Louisiana

All of the lands now or formerly constituting the beds and bottoms of all water bodies of every nature and description as to which title is vested in the State of Louisiana, together with all islands arising therein and other lands formed by accretion or by reliction, where allowed by law, excepting tax adjudicated lands, and not presently under mineral lease on March 12, 2008, situated in Lafourche Parish, Louisiana, and more particularly described as follows: Beginning at a Point having Coordinates of X = 2,344,797.00 and Y = 161,915.20; Thence South 22 degrees 18 minutes 34 seconds East 3,088.70 feet to a point having Coordinates of X = 2,345,969.50 and Y = 159,057.70; Thence South 68 degrees 29 minutes 51 seconds West 7,600.78 feet to a point on the East boundary of State Lease No. 192, as amended having Coordinates of X = 2,338,897.72 and Y = 156,271.71; Thence North 21 degrees 37 minutes 47 seconds West 3,088.41 feet along said East boundary of State Lease No. 192, as amended to a point having Coordinates of X = 2,337,759.32 and Y = 159,142.65; Thence North 68 degrees 29 minutes 52 seconds East 7,564.12 feet to the point of beginning, containing approximately **536 acres**, all as more particularly outlined on a plat on file in the Office of Mineral Resources, Department of Natural Resources. All bearings, distances and coordinates are based on Louisiana Coordinate System of 1927, (North or South Zone), where applicable.

NOTE: The above description of the Tract nominated for lease has been provided and corrected, where required, exclusively by the nomination party. Any mineral lease selected from this Tract and awarded by the Louisiana State Mineral Board shall be without warranty of any kind, either express, implied, or statutory, including, but not limited to, the implied warranties of merchantability and fitness for a particular purpose. Should the mineral lease awarded by the Louisiana State Mineral Board be subsequently modified, cancelled or abrogated due to the existence of conflicting leases, operating agreements, private claims or other future obligations or conditions which may affect all or any portion of the leased Tract, it shall not relieve the Lessee of the obligation to pay any bonus due thereon to the Louisiana State Mineral Board, nor shall the Louisiana State Mineral Board be obligated to refund any consideration paid by the Lessor prior to such modification, cancellation, or abrogation, including, but not limited to, bonuses, rentals and royalties.

NOTE: The Office of Mineral Resources will require a minimum bonus of \$200.00 per acre and a minimum royalty of 22.5%.

NOTE: The State of Louisiana does hereby reserve, and this lease shall be subject to, the imprescriptible right of surface use in the nature of a servitude in favor of the Department of Natural Resources, including its Offices and Commissions, for the sole purpose of implementing, constructing, servicing and maintaining approved coastal zone management and/or restoration projects. Utilization of any and all rights derived under this lease by the mineral lessee, its agents, successors or assigns,

shall not interfere with nor hinder the reasonable surface use by the Department of Natural Resources, its Offices or Commissions, as herein above reserved.

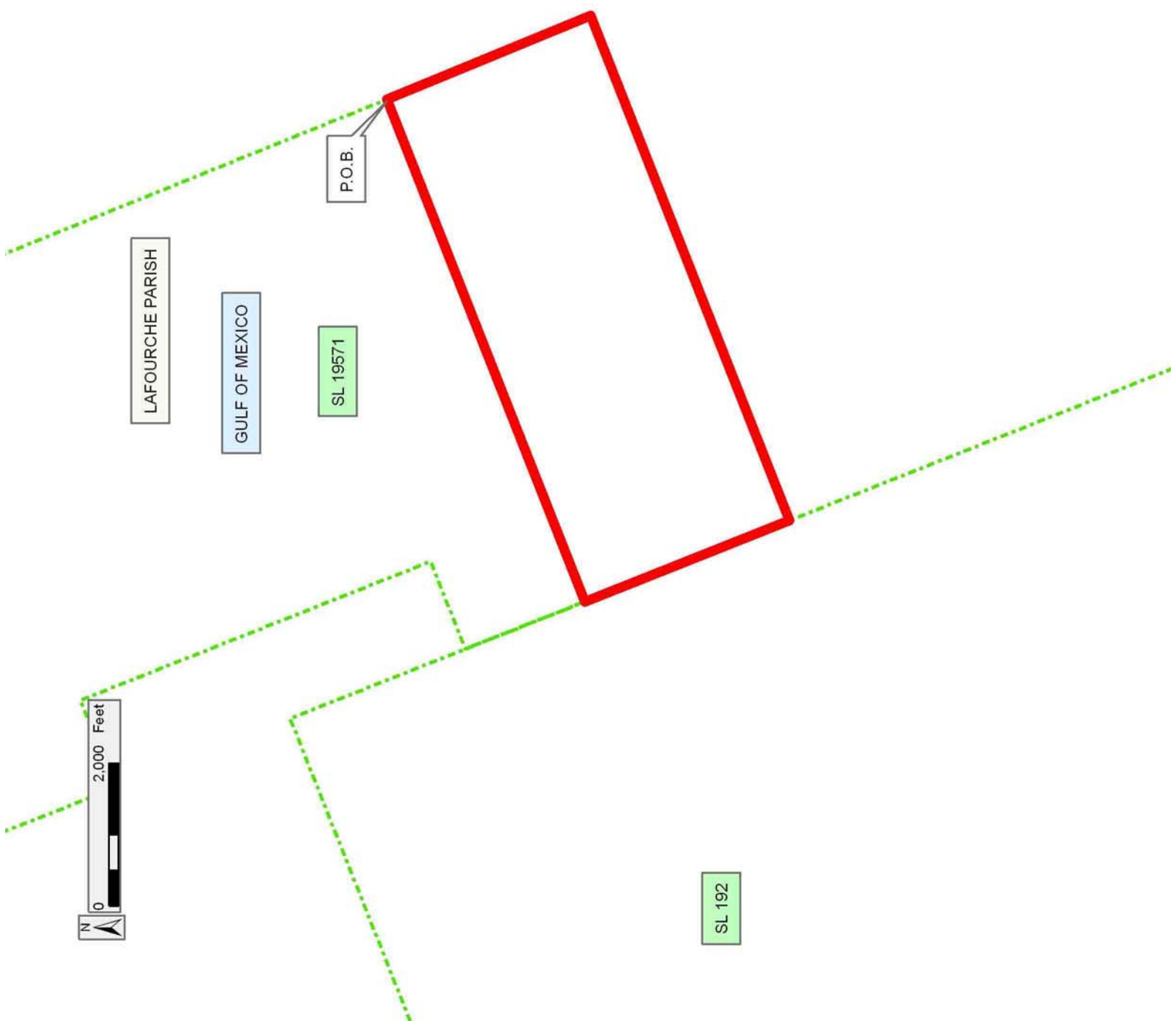
NOTE: The Department of Wildlife and Fisheries has designated certain areas in the coastal waters of the State of Louisiana as Oyster Seed Bed Areas. The exact location of those Seed Bed Areas must be obtained from the Department of Wildlife and Fisheries and any work done under a mineral lease from the State of Louisiana may necessarily be conducted in conformity with the rules and regulations promulgated by the said Department of Wildlife and Fisheries for Oyster Seed Bed Areas.

Applicant: AUDUBON OIL AND GAS CORPORATION

Bidder	Cash Payment	Price/Acre	Rental	Oil	Gas	Other

Legend

08030130
Active_Leases



TRACT 39717 - Lafourche Parish, Louisiana

All of the lands now or formerly constituting the beds and bottoms of all water bodies of every nature and description as to which title is vested in the State of Louisiana, together with all islands arising therein and other lands formed by accretion or by reliction, where allowed by law, excepting tax adjudicated lands, and not presently under mineral lease on March 12, 2008, situated in Lafourche Parish, Louisiana, and more particularly described as follows: Beginning at a Point having Coordinates of X = 2,313,540.40 and Y = 154,253.60; Thence North 56 degrees 12 minutes 21 seconds East 11,601.35 feet to a point having Coordinates of X = 2,323,181.60 and Y = 160,706.40; Thence South 21 degrees 09 minutes 43 seconds East 2,387.59 feet to a point on the North boundary of State Lease No. 192, as amended having Coordinates of X = 2,324,043.53 and Y = 158,479.82; Thence along the boundary of said State Lease No. 192, as amended the following courses: South 68 degrees 22 minutes 13 seconds West 2,845.69 feet to its Northwest corner having Coordinates of X = 2,321,398.22 and Y = 157,430.88; South 21 degrees 37 minutes 47 seconds East 3,061.40 feet to a corner of State Lease No. 1772, as amended having Coordinates of X = 2,322,526.68 and Y = 154,585.05; Thence along the boundary of said State Lease No. 1772, as amended the following courses: North 49 degrees 57 minutes 03 seconds West 341.83 feet to a point having Coordinates of X = 2,322,265.00 and Y = 154,805.00; South 19 degrees 08 minutes 55 seconds West 426.80 feet to a point having Coordinates of X = 2,322,125.01 and Y = 154,401.81; South 89 degrees 30 minutes 32 seconds West 642.93 feet to a point having Coordinates of X = 2,321,482.10 and Y = 154,396.30; South 00 degrees 09 minutes 44 seconds East 1,184.37 feet to the Northeast corner of State Lease No. 19451, as amended having Coordinates of X = 2,321,485.45 and Y = 153,211.93; Thence along the boundary of said State Lease No. 19451, as amended the following courses: South 89 degrees 50 minutes 16 seconds West 5,287.47 feet to its Northwest corner having Coordinates of X = 2,316,198.00 and Y = 153,196.96; South 00 degrees 29 minutes 17 seconds East 1,320.01 feet to its Southwest corner located on the North boundary of said State Lease No.1772, as amended having Coordinates of X = 2,316,209.24 and Y = 151,877.01; Thence North 89 degrees 58 minutes 41 seconds West 2,544.51 feet along the North boundary of said State Lease No.1772, as amended to a point having Coordinates of X = 2,313,664.73 and Y = 151,877.98; Thence North 02 degrees 59 minutes 45 seconds West 2,378.87 feet to the point of beginning, containing approximately **903.54 acres**, all as more particularly outlined on a plat on file in the Office of Mineral Resources, Department of Natural Resources. All bearings, distances and coordinates are based on Louisiana Coordinate System of 1927, (North or South Zone), where applicable.

NOTE: The above description of the Tract nominated for lease has been provided and corrected, where required, exclusively by the nomination party. Any mineral lease selected from this Tract and awarded by the Louisiana State Mineral Board shall be without warranty of any kind, either express, implied, or statutory, including, but not limited to, the implied warranties of merchantability and fitness for a particular

purpose. Should the mineral lease awarded by the Louisiana State Mineral Board be subsequently modified, cancelled or abrogated due to the existence of conflicting leases, operating agreements, private claims or other future obligations or conditions which may affect all or any portion of the leased Tract, it shall not relieve the Lessee of the obligation to pay any bonus due thereon to the Louisiana State Mineral Board, nor shall the Louisiana State Mineral Board be obligated to refund any consideration paid by the Lessor prior to such modification, cancellation, or abrogation, including, but not limited to, bonuses, rentals and royalties.

NOTE: The Office of Mineral Resources will require a minimum bonus of \$200.00 per acre and a minimum royalty of 22.5%.

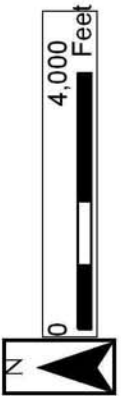
NOTE: The State of Louisiana does hereby reserve, and this lease shall be subject to, the imprescriptible right of surface use in the nature of a servitude in favor of the Department of Natural Resources, including its Offices and Commissions, for the sole purpose of implementing, constructing, servicing and maintaining approved coastal zone management and/or restoration projects. Utilization of any and all rights derived under this lease by the mineral lessee, its agents, successors or assigns, shall not interfere with nor hinder the reasonable surface use by the Department of Natural Resources, its Offices or Commissions, as herein above reserved.

NOTE: The Department of Wildlife and Fisheries has designated certain areas in the coastal waters of the State of Louisiana as Oyster Seed Bed Areas. The exact location of those Seed Bed Areas must be obtained from the Department of Wildlife and Fisheries and any work done under a mineral lease from the State of Louisiana may necessarily be conducted in conformity with the rules and regulations promulgated by the said Department of Wildlife and Fisheries for Oyster Seed Bed Areas.

Applicant: AUDUBON OIL AND GAS CORPORATION

Bidder	Cash Payment	Price/Acre	Rental	Oil	Gas	Other

Legend
08030129
Active_Leases



LAFOURCHE PARISH

TIMABUIER BAY

SL 19572

SL 192

SL 19451

SL 1772

GULF OF MEXICO

P.O.B.