

TRACT 39701 - St. Mary Parish, Louisiana

All of the lands now or formerly constituting the beds and bottoms of all water bodies of every nature and description as to which title is vested in the State of Louisiana, together with all islands arising therein and other lands formed by accretion or by reliction, where allowed by law, excepting tax adjudicated lands, and not presently under mineral lease on March 12, 2008, situated in St. Mary Parish, Louisiana, and more particularly described as follows: Beginning at a point having Coordinates of X = 1,893,585.00 and Y = 379,191.00; thence East 4,000.00 feet to a point having Coordinates of X = 1,897,585.00 and Y = 379,191.00; thence South 8,037.00 feet to a point having Coordinates of X = 1,897,585.00 and Y = 371,154.00; thence East 1,306.00 feet to a point having Coordinates of X = 1,898,891.00 and Y = 371,154.00; thence South 4,030.50 feet to a point having Coordinates of X = 1,898,891.00 and Y = 367,123.50; thence West 9,230.00 feet to a point having Coordinates of X = 1,889,661.00 and Y = 367,123.50; thence North 4,030.50 feet to a point having Coordinates of X = 1,889,661.00 and Y = 371,154.00; thence East 3,924.00 feet to a point having Coordinates of X = 1,893,585.00 and Y = 371,154.00; thence North 8,037.00 feet to the point of beginning, containing approximately **1,592.05 acres**, all as more particularly outlined on a plat on file in the Office of Mineral Resources, Department of Natural Resources. All bearings, distances and coordinates are based on Louisiana Coordinate System of 1927, (North or South Zone), where applicable.

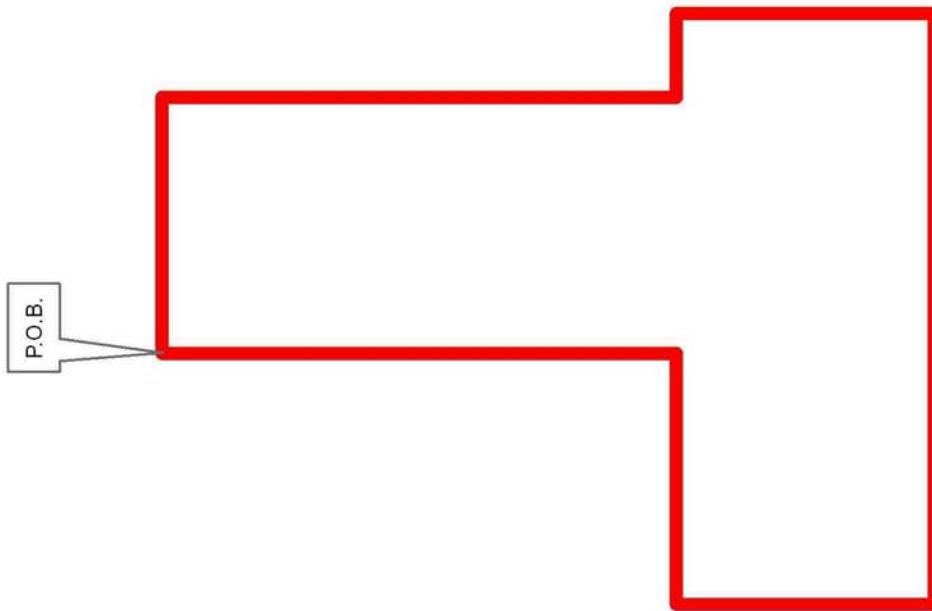
NOTE: The above description of the Tract nominated for lease has been provided and corrected, where required, exclusively by the nomination party. Any mineral lease selected from this Tract and awarded by the Louisiana State Mineral Board shall be without warranty of any kind, either express, implied, or statutory, including, but not limited to, the implied warranties of merchantability and fitness for a particular purpose. Should the mineral lease awarded by the Louisiana State Mineral Board be subsequently modified, cancelled or abrogated due to the existence of conflicting leases, operating agreements, private claims or other future obligations or conditions which may affect all or any portion of the leased Tract, it shall not relieve the Lessee of the obligation to pay any bonus due thereon to the Louisiana State Mineral Board, nor shall the Louisiana State Mineral Board be obligated to refund any consideration paid by the Lessor prior to such modification, cancellation, or abrogation, including, but not limited to, bonuses, rentals and royalties.

NOTE: The State of Louisiana does hereby reserve, and this lease shall be subject to, the imprescriptible right of surface use in the nature of a servitude in favor of the Department of Natural Resources, including its Offices and Commissions, for the sole purpose of implementing, constructing, servicing and maintaining approved coastal zone management and/or restoration projects. Utilization of any and all rights derived under this lease by the mineral lessee, its agents, successors or assigns, shall not interfere with nor hinder the reasonable surface use by the Department of Natural Resources, its Offices or Commissions, as herein above reserved.

NOTE: The Department of Wildlife and Fisheries has designated certain areas in the coastal waters of the State of Louisiana as Oyster Seed Bed Areas. The exact location of those Seed Bed Areas must be obtained from the Department of Wildlife and Fisheries and any work done under a mineral lease from the State of Louisiana may necessarily be conducted in conformity with the rules and regulations promulgated by the said Department of Wildlife and Fisheries for Oyster Seed Bed Areas.

Applicant: HAROLD J. ANDERSON, INC.

Bidder	Cash Payment	Price/ Acre	Rental	Oil	Gas	Other



ST MARY PARISH

ATCHAFALAYA BAY

TRACT 39702 - St. Mary Parish, Louisiana

All of the lands now or formerly constituting the beds and bottoms of all water bodies of every nature and description as to which title is vested in the State of Louisiana, together with all islands arising therein and other lands formed by accretion or by reliction, where allowed by law, excepting tax adjudicated lands, and not presently under mineral lease on March 12, 2008, situated in St. Mary Parish, Louisiana, and more particularly described as follows: Beginning at a point having Coordinates of X = 1,897,585.00 and Y = 379,191.00; thence East 7,924.00 feet to a point having Coordinates of X = 1,905,509.00 and Y = 379,191.00; thence South 4,858.37 feet to a point on the North boundary of State Lease No. 5176, as amended, having Coordinates of X = 1,905,509.00 and Y = 374,332.63; thence along the boundary of said State Lease No. 5176 the following courses: West 2,005.00 feet and South 3,231.84 feet to its Southwest corner also being a point on the North boundary of State Lease No. 8091, as amended, having Coordinates of X = 1,903,504.00 and Y = 371,100.79; thence along the boundary of said State Lease No. 8091 the following courses: West 1,736.02 feet and South 08 degrees 31 minutes 46 seconds East 2,528.76 feet to its Southwest corner also being the Northwest corner of State Lease No. 9410, as amended, having Coordinates of X = 1,902,143.04 and Y = 368,600.00; thence South 08 degrees 31 minutes 46 seconds East 1,493.01 feet along the West boundary of said State Lease No. 9410 to a point having Coordinates of X = 1,902,364.48 and Y = 367,123.50; thence West 3,473.48 feet to a point having Coordinates of X = 1,898,891.00 and Y = 367,123.50; thence North 4,030.50 feet to a point having Coordinates of X = 1,898,891.00 and Y = 371,154.00; thence West 1,306.00 feet to a point having Coordinates of X = 1,897,585.00 and Y = 371,154.00; thence North 8,037.00 feet to the point of beginning, containing approximately **1,611.26 acres**, all as more particularly outlined on a plat on file in the Office of Mineral Resources, Department of Natural Resources. All bearings, distances and coordinates are based on Louisiana Coordinate System of 1927, (North or South Zone), where applicable.

NOTE: The above description of the Tract nominated for lease has been provided and corrected, where required, exclusively by the nomination party. Any mineral lease selected from this Tract and awarded by the Louisiana State Mineral Board shall be without warranty of any kind, either express, implied, or statutory, including, but not limited to, the implied warranties of merchantability and fitness for a particular purpose. Should the mineral lease awarded by the Louisiana State Mineral Board be subsequently modified, cancelled or abrogated due to the existence of conflicting leases, operating agreements, private claims or other future obligations or conditions which may affect all or any portion of the leased Tract, it shall not relieve the Lessee of the obligation to pay any bonus due thereon to the Louisiana State Mineral Board, nor shall the Louisiana State Mineral Board be obligated to refund any consideration paid by the Lessor prior to such modification, cancellation, or abrogation, including, but not limited to, bonuses, rentals and royalties.

NOTE: The State of Louisiana does hereby reserve, and this lease shall be subject to, the imprescriptible right of surface use in the nature of a servitude in favor of the Department of Natural Resources, including its Offices and Commissions, for the sole purpose of implementing, constructing, servicing and maintaining approved coastal zone management and/or restoration projects. Utilization of any and all rights derived under this lease by the mineral lessee, its agents, successors or assigns, shall not interfere with nor hinder the reasonable surface use by the Department of Natural Resources, its Offices or Commissions, as herein above reserved.

NOTE: The Department of Wildlife and Fisheries has designated certain areas in the coastal waters of the State of Louisiana as Oyster Seed Bed Areas. The exact location of those Seed Bed Areas must be obtained from the Department of Wildlife and Fisheries and any work done under a mineral lease from the State of Louisiana may necessarily be conducted in conformity with the rules and regulations promulgated by the said Department of Wildlife and Fisheries for Oyster Seed Bed Areas.

Applicant: HAROLD J. ANDERSON, INC.

Bidder	Cash Payment	Price/ Acre	Rental	Oil	Gas	Other

Legend

08030105

Active Leases



P.O.B.

ST MARY PARISH

ATCHAFALAYA BAY

SL 5176

SL 8091

SL 9410

TRACT 39703 - St. Mary Parish, Louisiana

All of the lands now or formerly constituting the beds and bottoms of all water bodies of every nature and description as to which title is vested in the State of Louisiana, together with all islands arising therein and other lands formed by accretion or by reliction, where allowed by law, excepting tax adjudicated lands, and not presently under mineral lease on March 12, 2008, situated in St. Mary Parish, Louisiana, and more particularly described as follows: Beginning at a point having Coordinates of X = 1,905,509.00 and Y = 379,191.00; thence East 7,924.00 feet to a point having Coordinates of X = 1,913,433.00 and Y = 379,191.00; thence South 8,037.00 feet to a point having Coordinates of X = 1,913,433.00 and Y = 371,154.00; thence West 1,306.00 feet to a point having Coordinates of X = 1,912,127.00 and Y = 371,154.00; thence South 4,030.50 feet to a point having Coordinates of X = 1,912,127.00 and Y = 367,123.50; thence West 3,829.00 feet to a point on the East boundary of State Lease No. 13470 having Coordinates of X = 1,908,298.00 and Y = 367,123.50; thence North 3,449.99 feet along the East boundary of said State Lease No. 13470 to a point on the Southern boundary of State Lease No. 5176, as amended, having Coordinates of X = 1,908,298.00 and Y = 370,573.49; thence along the boundary of said State Lease No. 5176 the following courses: South 73 degrees 52 minutes 35 seconds East 1,255.38 feet; North 4,107.77 feet and West 3,995.00 feet to a point on its North boundary having Coordinates of X = 1,905,509.00 and Y = 374,332.63; thence North 4,858.37 feet to the point of beginning, containing approximately **401 acres**, all as more particularly outlined on a plat on file in the Office of Mineral Resources, Department of Natural Resources. All bearings, distances and coordinates are based on Louisiana Coordinate System of 1927, (North or South Zone), where applicable.

NOTE: The above description of the Tract nominated for lease has been provided and corrected, where required, exclusively by the nomination party. Any mineral lease selected from this Tract and awarded by the Louisiana State Mineral Board shall be without warranty of any kind, either express, implied, or statutory, including, but not limited to, the implied warranties of merchantability and fitness for a particular purpose. Should the mineral lease awarded by the Louisiana State Mineral Board be subsequently modified, cancelled or abrogated due to the existence of conflicting leases, operating agreements, private claims or other future obligations or conditions which may affect all or any portion of the leased Tract, it shall not relieve the Lessee of the obligation to pay any bonus due thereon to the Louisiana State Mineral Board, nor shall the Louisiana State Mineral Board be obligated to refund any consideration paid by the Lessor prior to such modification, cancellation, or abrogation, including, but not limited to, bonuses, rentals and royalties.

NOTE: The State of Louisiana does hereby reserve, and this lease shall be subject to, the imprescriptible right of surface use in the nature of a servitude in favor of the Department of Natural Resources, including its Offices and Commissions, for the sole purpose of implementing,

constructing, servicing and maintaining approved coastal zone management and/or restoration projects. Utilization of any and all rights derived under this lease by the mineral lessee, its agents, successors or assigns, shall not interfere with nor hinder the reasonable surface use by the Department of Natural Resources, its Offices or Commissions, as herein above reserved.

NOTE: The Department of Wildlife and Fisheries has designated certain areas in the coastal waters of the State of Louisiana as Oyster Seed Bed Areas. The exact location of those Seed Bed Areas must be obtained from the Department of Wildlife and Fisheries and any work done under a mineral lease from the State of Louisiana may necessarily be conducted in conformity with the rules and regulations promulgated by the said Department of Wildlife and Fisheries for Oyster Seed Bed Areas.

Applicant: HAROLD J. ANDERSON, INC.

Bidder	Cash Payment	Price/ Acre	Rental	Oil	Gas	Other

Legend
08030106
Active_Leases
DOQQ2004

ST MARY PARISH

ATCHAFALAYA BAY

P.O.B.

T15S - R9E

SL 5176

SL 13470



TRACT 39704 - St. Mary Parish, Louisiana

All of the lands now or formerly constituting the beds and bottoms of all water bodies of every nature and description as to which title is vested in the State of Louisiana, together with all islands arising therein and other lands formed by accretion or by reliction, where allowed by law, excepting tax adjudicated lands, and not presently under mineral lease on March 12, 2008, situated in St. Mary Parish, Louisiana, and more particularly described as follows: Beginning at a point having Coordinates of X = 1,889,661.00 and Y = 367,123.50; thence East 9,230.00 feet to a point having Coordinates of X = 1,898,891.00 and Y = 367,123.50; thence South 12,067.50 feet to a point having Coordinates of X = 1,898,891.00 and Y = 355,056.00; thence West 5,230.00 feet to a point having Coordinates of X = 1,893,661.00 and Y = 355,056.00; thence North 5,370.00 feet to a point having Coordinates of X = 1,893,661.00 and Y = 360,426.00; thence West 4,000.00 feet to a point having Coordinates of X = 1,889,661.00 and Y = 360,426.00; thence North 6,697.50 feet to the point of beginning, containing approximately **2,063.89 acres**, all as more particularly outlined on a plat on file in the Office of Mineral Resources, Department of Natural Resources. All bearings, distances and coordinates are based on Louisiana Coordinate System of 1927, (North or South Zone), where applicable.

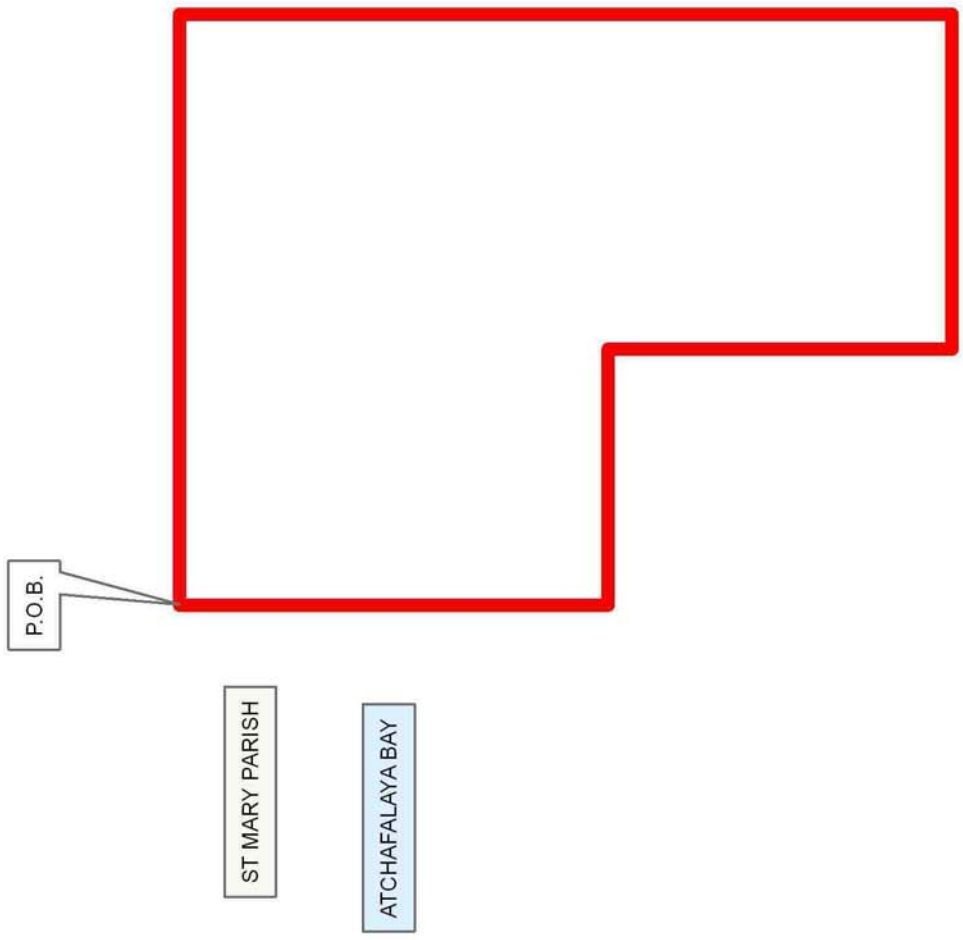
NOTE: The above description of the Tract nominated for lease has been provided and corrected, where required, exclusively by the nomination party. Any mineral lease selected from this Tract and awarded by the Louisiana State Mineral Board shall be without warranty of any kind, either express, implied, or statutory, including, but not limited to, the implied warranties of merchantability and fitness for a particular purpose. Should the mineral lease awarded by the Louisiana State Mineral Board be subsequently modified, cancelled or abrogated due to the existence of conflicting leases, operating agreements, private claims or other future obligations or conditions which may affect all or any portion of the leased Tract, it shall not relieve the Lessee of the obligation to pay any bonus due thereon to the Louisiana State Mineral Board, nor shall the Louisiana State Mineral Board be obligated to refund any consideration paid by the Lessor prior to such modification, cancellation, or abrogation, including, but not limited to, bonuses, rentals and royalties.

NOTE: The State of Louisiana does hereby reserve, and this lease shall be subject to, the imprescriptible right of surface use in the nature of a servitude in favor of the Department of Natural Resources, including its Offices and Commissions, for the sole purpose of implementing, constructing, servicing and maintaining approved coastal zone management and/or restoration projects. Utilization of any and all rights derived under this lease by the mineral lessee, its agents, successors or assigns, shall not interfere with nor hinder the reasonable surface use by the Department of Natural Resources, its Offices or Commissions, as herein above reserved.

NOTE: The Department of Wildlife and Fisheries has designated certain areas in the coastal waters of the State of Louisiana as Oyster Seed Bed Areas. The exact location of those Seed Bed Areas must be obtained from the Department of Wildlife and Fisheries and any work done under a mineral lease from the State of Louisiana may necessarily be conducted in conformity with the rules and regulations promulgated by the said Department of Wildlife and Fisheries for Oyster Seed Bed Areas.

Applicant: HAROLD J. ANDERSON, INC.

Bidder	Cash Payment	Price/ Acre	Rental	Oil	Gas	Other



TRACT 39705 - St. Mary Parish, Louisiana

All of the lands now or formerly constituting the beds and bottoms of all water bodies of every nature and description as to which title is vested in the State of Louisiana, together with all islands arising therein and other lands formed by accretion or by reliction, where allowed by law, excepting tax adjudicated lands, and not presently under mineral lease on March 12, 2008, situated in St. Mary Parish, Louisiana, and more particularly described as follows: Beginning at a point having Coordinates of X = 1,898,891.00 and Y = 367,123.50; thence East 3,473.48 feet to a point on the West boundary of State Lease No. 9410, as amended, having Coordinates of X = 1,902,364.48 and Y = 367,123.50; thence along the boundary of said State Lease No. 9410 the following courses: South 08 degrees 31 minutes 46 seconds East 1,475.26 feet and South 87 degrees 05 minutes 15 seconds East 2,929.49 feet to a point on its South boundary having Coordinates of X = 1,905,509.00 and Y = 365,515.71; thence South 10,459.71 feet to a point having Coordinates of X = 1,905,509.00 and Y = 355,056.00; thence West 6,618.00 feet to a point having Coordinates of X = 1,898,891.00 and Y = 355,056.00; thence North 12,067.50 feet to the point of beginning, containing approximately **1,646 acres**, all as more particularly outlined on a plat on file in the Office of Mineral Resources, Department of Natural Resources. All bearings, distances and coordinates are based on Louisiana Coordinate System of 1927, (North or South Zone), where applicable.

NOTE: The above description of the Tract nominated for lease has been provided and corrected, where required, exclusively by the nomination party. Any mineral lease selected from this Tract and awarded by the Louisiana State Mineral Board shall be without warranty of any kind, either express, implied, or statutory, including, but not limited to, the implied warranties of merchantability and fitness for a particular purpose. Should the mineral lease awarded by the Louisiana State Mineral Board be subsequently modified, cancelled or abrogated due to the existence of conflicting leases, operating agreements, private claims or other future obligations or conditions which may affect all or any portion of the leased Tract, it shall not relieve the Lessee of the obligation to pay any bonus due thereon to the Louisiana State Mineral Board, nor shall the Louisiana State Mineral Board be obligated to refund any consideration paid by the Lessor prior to such modification, cancellation, or abrogation, including, but not limited to, bonuses, rentals and royalties.

NOTE: The State of Louisiana does hereby reserve, and this lease shall be subject to, the imprescriptible right of surface use in the nature of a servitude in favor of the Department of Natural Resources, including its Offices and Commissions, for the sole purpose of implementing, constructing, servicing and maintaining approved coastal zone management and/or restoration projects. Utilization of any and all rights derived under this lease by the mineral lessee, its agents, successors or assigns, shall not interfere with nor hinder the reasonable surface use by the

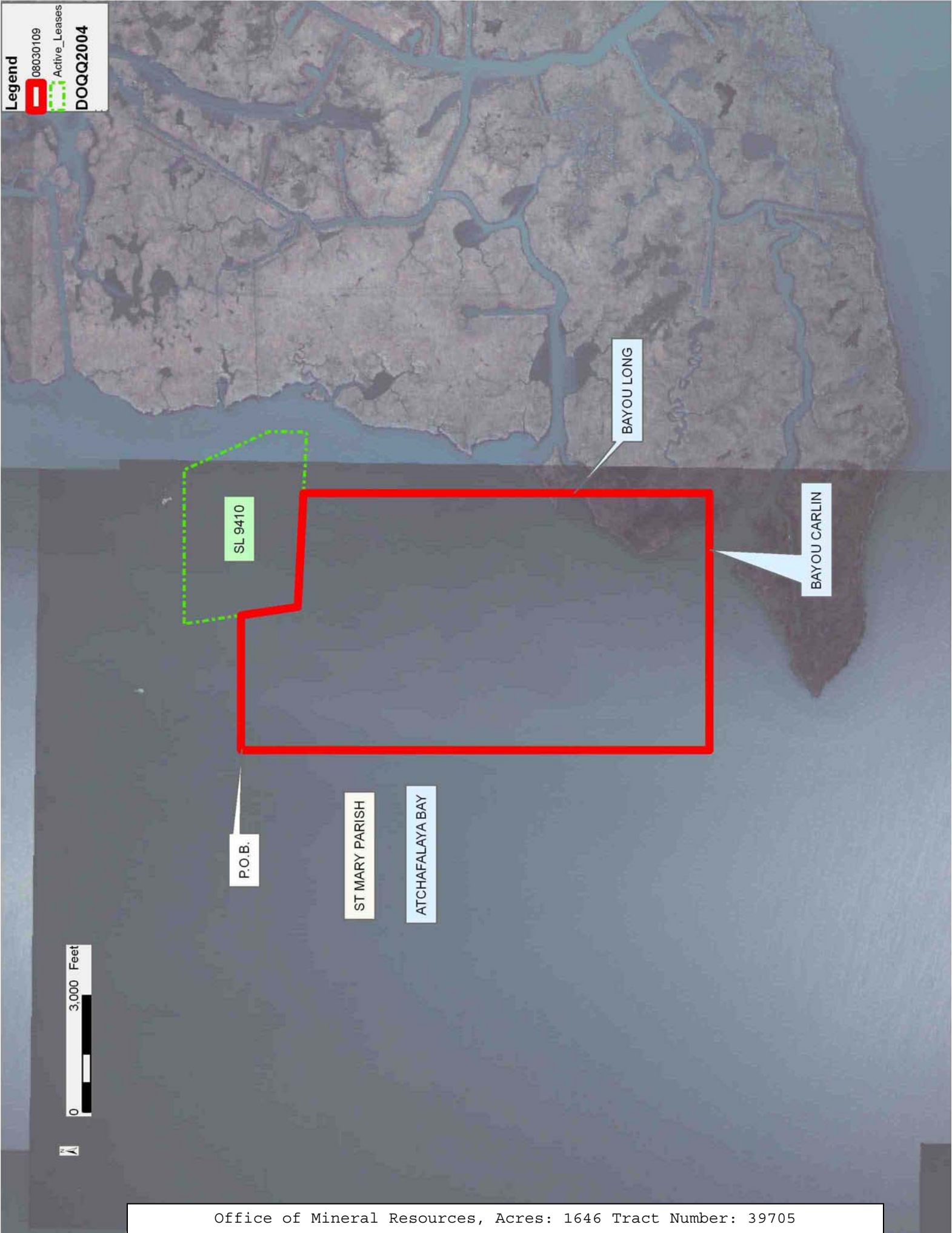
Department of Natural Resources, its Offices or Commissions, as herein above reserved.

NOTE: The Department of Wildlife and Fisheries has designated certain areas in the coastal waters of the State of Louisiana as Oyster Seed Bed Areas. The exact location of those Seed Bed Areas must be obtained from the Department of Wildlife and Fisheries and any work done under a mineral lease from the State of Louisiana may necessarily be conducted in conformity with the rules and regulations promulgated by the said Department of Wildlife and Fisheries for Oyster Seed Bed Areas.

Applicant: HAROLD J. ANDERSON, INC.

Bidder	Cash Payment	Price/ Acre	Rental	Oil	Gas	Other

Legend
08030109
Active_Leases
DOQQ2004



TRACT 39706 - St. Mary Parish, Louisiana

All of the lands now or formerly constituting the beds and bottoms of all water bodies of every nature and description as to which title is vested in the State of Louisiana, together with all islands arising therein and other lands formed by accretion or by reliction, where allowed by law, excepting tax adjudicated lands, and not presently under mineral lease on March 12, 2008, situated in St. Mary Parish, Louisiana, and more particularly described as follows: Beginning at a point on the East boundary of State Lease No. 13470 having Coordinates of X = 1,908,298.00 and Y = 367,123.50; thence East 3,829.00 feet to a point having Coordinates of X = 1,912,127.00 and Y = 367,123.50; thence South 6,697.50 feet to a point having Coordinates of X = 1,912,127.00 and Y = 360,426.00; thence West 1,346.00 feet to a point having Coordinates of X = 1,910,781.00 and Y = 360,426.00; thence South 5,370.00 feet to a point having Coordinates of X = 1,910,781.00 and Y = 355,056.00; thence West 5,272.00 feet to a point having Coordinates of X = 1,905,509.00 and Y = 355,056.00; thence North 10,459.71 feet to a point on the South boundary of State Lease No. 9410, as amended, having Coordinates of X = 1,905,509.00 and Y = 365,515.71; thence South 87 degrees 05 minutes 15 seconds East 1,576.39 feet along the South boundary of said State Lease No. 9410 to a point on the West boundary of State Lease No. 17290 having Coordinates of X = 1,907,083.35 and Y = 365,435.61; thence along the boundary of said State Lease No. 17290 the following courses: South 00 degrees 12 minutes 34 seconds West 3,235.63 feet; East 1,528.48 feet; North 4,045.00 feet and West 302.00 feet to a point on its North boundary, also being the Southeast corner of said State Lease No. 13470 having Coordinates of X = 1,908,298.00 and Y = 366,245.00; thence North 878.50 feet along the East boundary of said State Lease No. 13470 to the point of beginning, containing approximately **289 acres**, all as more particularly outlined on a plat on file in the Office of Mineral Resources, Department of Natural Resources. All bearings, distances and coordinates are based on Louisiana Coordinate System of 1927, (North or South Zone), where applicable.

NOTE: The above description of the Tract nominated for lease has been provided and corrected, where required, exclusively by the nomination party. Any mineral lease selected from this Tract and awarded by the Louisiana State Mineral Board shall be without warranty of any kind, either express, implied, or statutory, including, but not limited to, the implied warranties of merchantability and fitness for a particular purpose. Should the mineral lease awarded by the Louisiana State Mineral Board be subsequently modified, cancelled or abrogated due to the existence of conflicting leases, operating agreements, private claims or other future obligations or conditions which may affect all or any portion of the leased Tract, it shall not relieve the Lessee of the obligation to pay any bonus due thereon to the Louisiana State Mineral Board, nor shall the Louisiana State Mineral Board be obligated to refund any consideration paid by the Lessor prior to such modification, cancellation, or abrogation, including, but not limited to, bonuses, rentals and royalties.

NOTE: The State of Louisiana does hereby reserve, and this lease shall be subject to, the imprescriptible right of surface use in the nature of a servitude in favor of the Department of Natural Resources, including its Offices and Commissions, for the sole purpose of implementing, constructing, servicing and maintaining approved coastal zone management and/or restoration projects. Utilization of any and all rights derived under this lease by the mineral lessee, its agents, successors or assigns, shall not interfere with nor hinder the reasonable surface use by the Department of Natural Resources, its Offices or Commissions, as herein above reserved.

NOTE: The Department of Wildlife and Fisheries has designated certain areas in the coastal waters of the State of Louisiana as Oyster Seed Bed Areas. The exact location of those Seed Bed Areas must be obtained from the Department of Wildlife and Fisheries and any work done under a mineral lease from the State of Louisiana may necessarily be conducted in conformity with the rules and regulations promulgated by the said Department of Wildlife and Fisheries for Oyster Seed Bed Areas.

Applicant: HAROLD J. ANDERSON, INC.

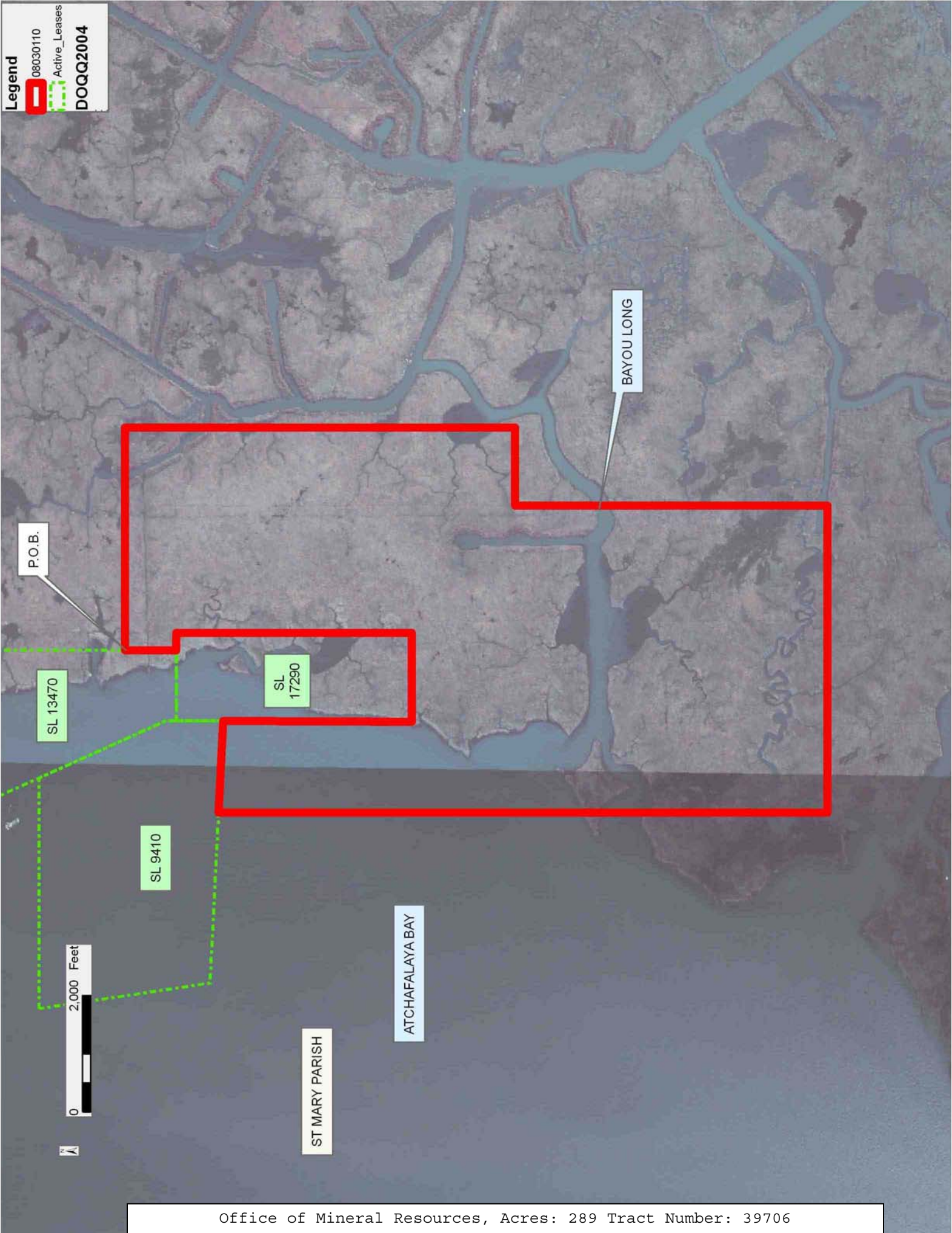
Bidder	Cash Payment	Price/ Acre	Rental	Oil	Gas	Other

Legend

08030110

Active_Leases

DOQQ2004



TRACT 39707 - St. Mary Parish, Louisiana

All of the lands now or formerly constituting the beds and bottoms of all water bodies of every nature and description as to which title is vested in the State of Louisiana, together with all islands arising therein and other lands formed by accretion or by reliction, where allowed by law, excepting tax adjudicated lands, and not presently under mineral lease on March 12, 2008, situated in St. Mary Parish, Louisiana, and more particularly described as follows: Beginning at the Southeast corner of State Lease No. 19368, also being a point on the West boundary of State Lease No. 19366 having Coordinates of X = 1,957,541.22 and Y = 326,969.78; thence South 00 degrees 09 minutes 40 seconds West 1,864.78 feet along the West boundary of said State Lease No. 19366 to a point on the North boundary of State Lease No. 18339 having Coordinates of X = 1,957,535.97 and Y = 325,105.00; thence along the boundary of said State Lease No. 18339 the following courses: West 2,573.12 feet to its Northwest corner having Coordinates of X = 1,954,962.85 and Y = 325,105.00 and South 00 degrees 14 minutes 07 seconds West 838.66 feet to a point on the North boundary of State Lease No. 18348 having Coordinates of X = 1,954,959.37 and Y = 324,266.35; thence South 89 degrees 05 minutes 20 seconds West approximately 2,132 feet along the North boundary of said State Lease No. 18348 to a point of intersection with the Eastern boundary of State Lease No. 329, as amended; thence Northerly approximately 5,336 feet along the Eastern boundary of said State Lease No. 329 to the Westernmost Southwest corner of said State Lease No. 19368 having a Coordinate of Y = 329,568.68; thence along the boundary of said State Lease No. 19368 the following courses: East approximately 2,082 feet to a point having Coordinates of X = 1,954,923.83 and Y = 329,568.68; South 00 degrees 18 minutes 00 seconds West 2,603.17 feet to a point having Coordinates of X = 1,954,910.20 and Y = 326,965.55 and North 89 degrees 54 minutes 29 seconds East 2,631.01 feet to the point of beginning, **LESS AND EXCEPT** that portion, if any, of State Lease No. 329, as amended, that may lie within the above described tract, containing approximately **41 acres**, all as more particularly outlined on a plat on file in the Office of Mineral Resources, Department of Natural Resources. All bearings, distances and coordinates are based on Louisiana Coordinate System of 1927, (North or South Zone), where applicable.

NOTE: The above description of the Tract nominated for lease has been provided and corrected, where required, exclusively by the nomination party. Any mineral lease selected from this Tract and awarded by the Louisiana State Mineral Board shall be without warranty of any kind, either express, implied, or statutory, including, but not limited to, the implied warranties of merchantability and fitness for a particular purpose. Should the mineral lease awarded by the Louisiana State Mineral Board be subsequently modified, cancelled or abrogated due to the existence of conflicting leases, operating agreements, private claims or other future obligations or conditions which may affect all or any portion of the leased Tract, it shall not relieve the Lessee of the obligation to pay any bonus due thereon to the Louisiana State Mineral Board, nor shall


the Louisiana State Mineral Board be obligated to refund any consideration paid by the Lessor prior to such modification, cancellation, or abrogation, including, but not limited to, bonuses, rentals and royalties.

NOTE: The State of Louisiana does hereby reserve, and this lease shall be subject to, the imprescriptible right of surface use in the nature of a servitude in favor of the Department of Natural Resources, including its Offices and Commissions, for the sole purpose of implementing, constructing, servicing and maintaining approved coastal zone management and/or restoration projects. Utilization of any and all rights derived under this lease by the mineral lessee, its agents, successors or assigns, shall not interfere with nor hinder the reasonable surface use by the Department of Natural Resources, its Offices or Commissions, as herein above reserved.

Applicant: FLEETWOOD RESOURCES, INC.

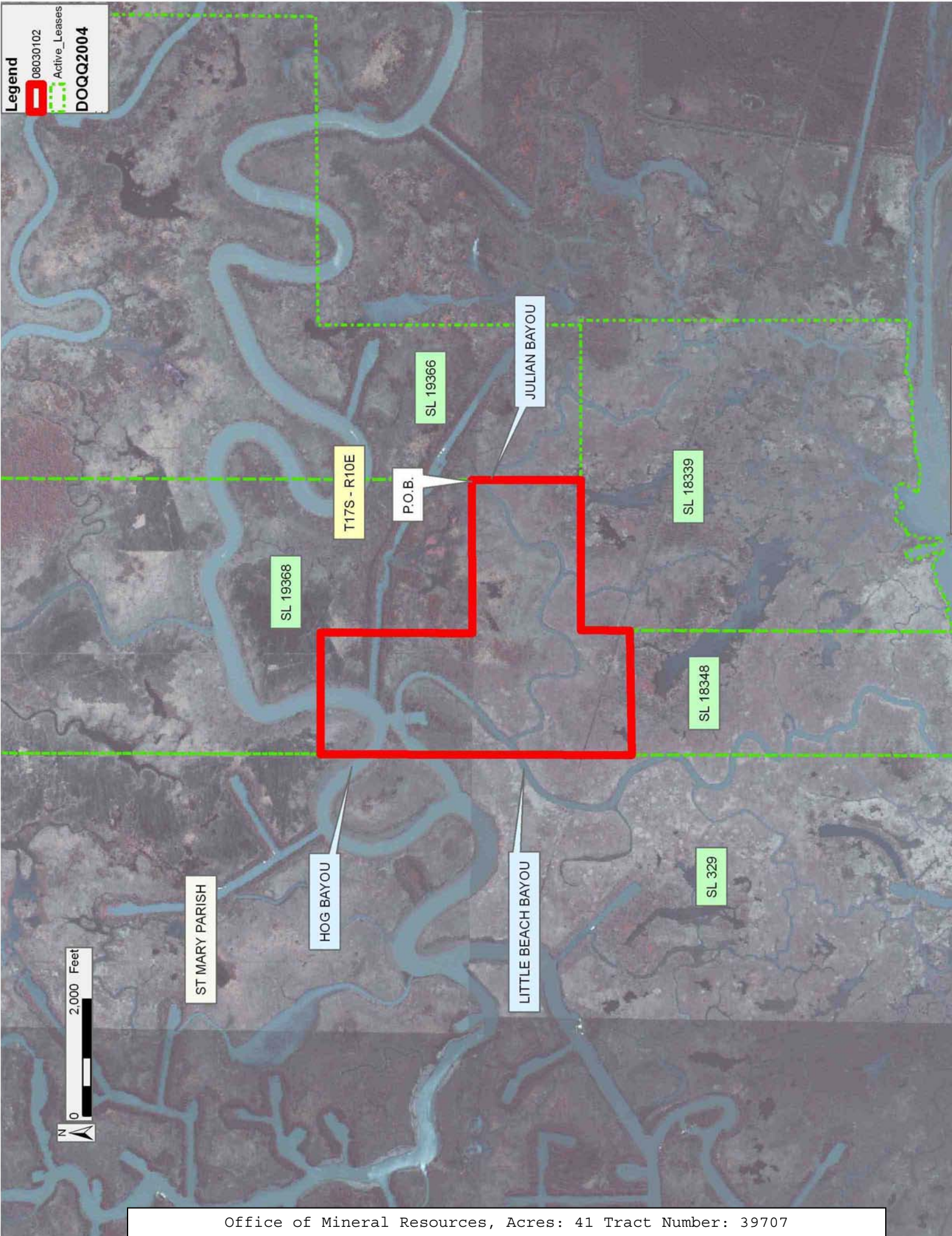
Bidder	Cash Payment	Price/ Acre	Rental	Oil	Gas	Other

Legend

 08030102

 Active_Leases

DOQQ2004



TRACT 39708 - St. Mary Parish, Louisiana

All of the lands now or formerly constituting the beds and bottoms of all water bodies of every nature and description as to which title is vested in the State of Louisiana, together with all islands arising therein and other lands formed by accretion or by reliction, where allowed by law, excepting tax adjudicated lands, and not presently under mineral lease on March 12, 2008, situated in St. Mary Parish, Louisiana, and more particularly described as follows: Beginning at the Southwest corner of State Lease No. 19371, also being the Southeast corner of State Lease No. 19370 having Coordinates of X = 1,965,442.85 and Y = 324,313.52; thence South approximately 5,127 feet to a point on the Northern boundary of the Atchafalaya Delta Wildlife Management Area having a Coordinate of X = 1,965,442.85; thence Westerly along the meanders of said boundary of said Atchafalaya Delta Wildlife Management Area to the Southeast corner of State Lease No. 18339 having a Coordinate of X = 1,960,274.29; thence North approximately 4,838 feet along the East boundary of said State Lease No. 18339 to the Southernmost Southwest corner of said State Lease No. 19370 having Coordinates of X = 1,960,274.29 and Y = 324,340.43; thence South 89 degrees 42 minutes 06 seconds East 5,168.63 feet along the South boundary of said State Lease No. 19370 to the point of beginning, **LESS AND EXCEPT** that portion, if any, of the Atchafalaya Delta Wildlife Management Area, which may lie within, the above described tract, containing approximately **0.15 net acres** and approximately 1.0 gross acres, all as more particularly outlined on a plat on file in the Office of Mineral Resources, Department of Natural Resources. All bearings, distances and coordinates are based on Louisiana Coordinate System of 1927, (North or South Zone), where applicable.

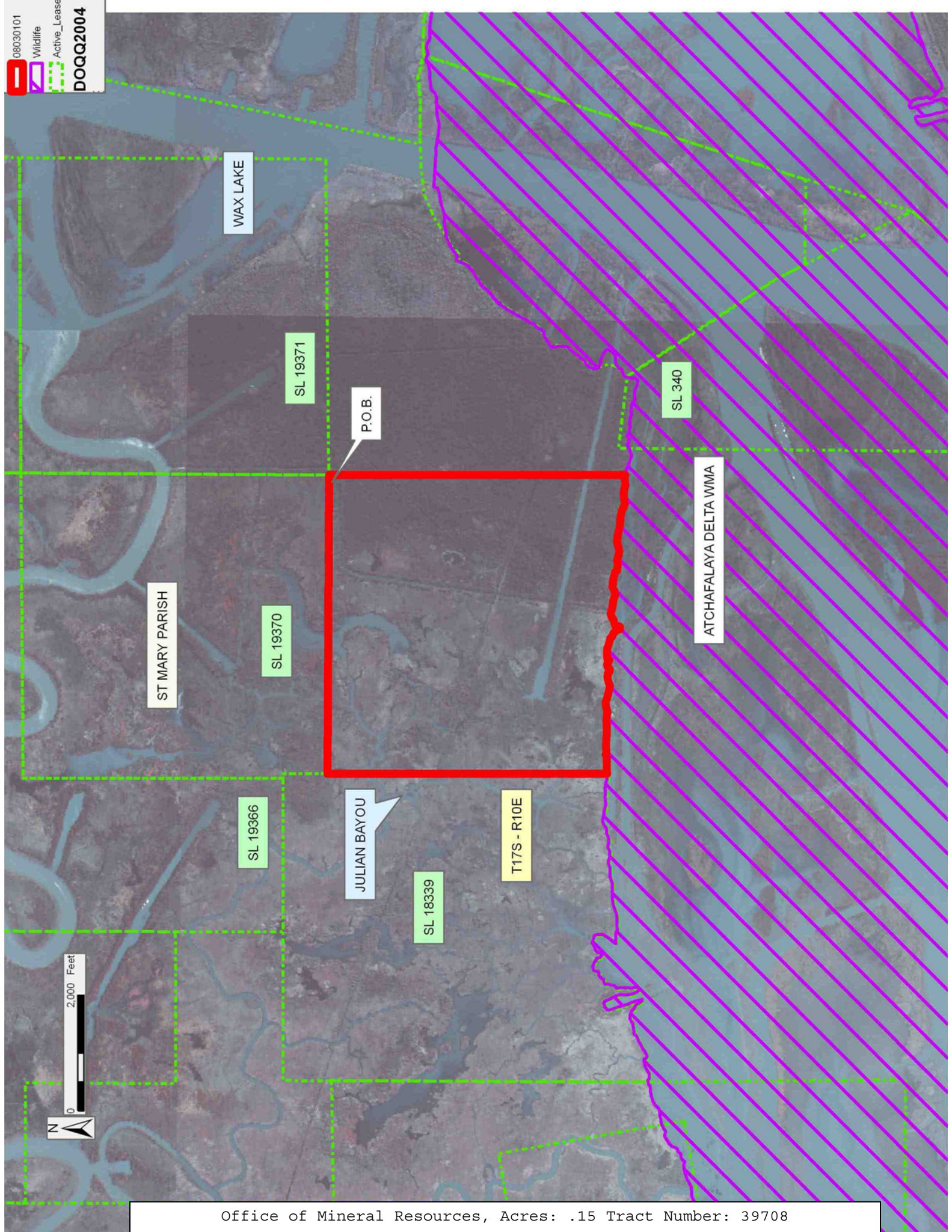
NOTE: The above description of the Tract nominated for lease has been provided and corrected, where required, exclusively by the nomination party. Any mineral lease selected from this Tract and awarded by the Louisiana State Mineral Board shall be without warranty of any kind, either express, implied, or statutory, including, but not limited to, the implied warranties of merchantability and fitness for a particular purpose. Should the mineral lease awarded by the Louisiana State Mineral Board be subsequently modified, cancelled or abrogated due to the existence of conflicting leases, operating agreements, private claims or other future obligations or conditions which may affect all or any portion of the leased Tract, it shall not relieve the Lessee of the obligation to pay any bonus due thereon to the Louisiana State Mineral Board, nor shall the Louisiana State Mineral Board be obligated to refund any consideration paid by the Lessor prior to such modification, cancellation, or abrogation, including, but not limited to, bonuses, rentals and royalties.

NOTE: The State of Louisiana does hereby reserve, and this lease shall be subject to, the imprescriptible right of surface use in the nature of a servitude in favor of the Department of Natural Resources, including its Offices and Commissions, for the sole purpose of implementing, constructing, servicing and maintaining approved coastal zone management

and/or restoration projects. Utilization of any and all rights derived under this lease by the mineral lessee, its agents, successors or assigns, shall not interfere with nor hinder the reasonable surface use by the Department of Natural Resources, its Offices or Commissions, as herein above reserved.

Applicant: FLEETWOOD RESOURCES, INC.

Bidder	Cash Payment	Price/ Acre	Rental	Oil	Gas	Other



TRACT 39709 - Terrebonne Parish, Louisiana

All of the lands now or formerly constituting the beds and bottoms of all water bodies of every nature and description as to which title is vested in the State of Louisiana, together with all islands arising therein and other lands formed by accretion or by reliction, where allowed by law, excepting tax adjudicated lands, and not presently under mineral lease on March 12, 2008, situated in Terrebonne Parish, Louisiana, and more particularly described as follows: Beginning at a point having Coordinates of X = 2,038,076.58 and Y = 301,500.00; thence East 11,423.42 feet to the Northeast corner of State Lease No. 19530 having Coordinates of X = 2,049,500.00 and Y = 301,500.00; thence along the boundary of said State Lease No. 19530 the following courses: South 3,503.23 feet to a point having Coordinates of X = 2,049,500.00 and Y = 297,996.77 and South 77 degrees 00 minutes 00 seconds East 185.47 feet to the Northwest corner of the Western portion of State Lease No. 17210, as amended, having Coordinates of X = 2,049,680.72 and Y = 297,955.05; thence along the boundary of the Western portion of said State Lease No. 17210 the following courses: South 01 degrees 45 minutes 15 seconds East 3,053.00 feet and South 77 degrees 00 minutes 00 seconds East 6,960.81 feet to its Southeast corner, also being the Southernmost point of said State Lease No. 19530 having Coordinates of X = 2,056,556.58 and Y = 293,337.63; thence South 2,637.63 feet to a point having Coordinates of X = 2,056,556.58 and Y = 290,700.00; thence West 6,654.77 feet to a point on the East boundary of State Lease No. 18266 having Coordinates of X = 2,049,901.81 and Y = 290,700.00; thence along the boundary of said State Lease No. 18266 the following courses: North 01 degrees 46 minutes 10 seconds West 596.38 feet to a point having Coordinates of X = 2,049,883.40 and Y = 291,296.09; West 10,483.40 feet to a point having Coordinates of X = 2,039,400.00 and Y = 291,296.09 and South 1,867.76 feet to its Southwest corner having Coordinates of X = 2,039,400.00 and Y = 289,428.33; thence West 1,323.42 feet to a point having Coordinates of X = 2,038,076.58 and Y = 289,428.33; thence North 12,071.67 feet to the point of beginning, containing approximately **56 acres**, all as more particularly outlined on a plat on file in the Office of Mineral Resources, Department of Natural Resources. All bearings, distances and coordinates are based on Louisiana Coordinate System of 1927, (North or South Zone), where applicable.

NOTE: The above description of the Tract nominated for lease has been provided and corrected, where required, exclusively by the nomination party. Any mineral lease selected from this Tract and awarded by the Louisiana State Mineral Board shall be without warranty of any kind, either express, implied, or statutory, including, but not limited to, the implied warranties of merchantability and fitness for a particular purpose. Should the mineral lease awarded by the Louisiana State Mineral Board be subsequently modified, cancelled or abrogated due to the existence of conflicting leases, operating agreements, private claims or other future obligations or conditions which may affect all or any portion of the leased Tract, it shall not relieve the Lessee of the obligation to pay any bonus due thereon to the Louisiana State Mineral Board, nor shall

the Louisiana State Mineral Board be obligated to refund any consideration paid by the Lessor prior to such modification, cancellation, or abrogation, including, but not limited to, bonuses, rentals and royalties.

NOTE: The State of Louisiana does hereby reserve, and this lease shall be subject to, the imprescriptible right of surface use in the nature of a servitude in favor of the Department of Natural Resources, including its Offices and Commissions, for the sole purpose of implementing, constructing, servicing and maintaining approved coastal zone management and/or restoration projects. Utilization of any and all rights derived under this lease by the mineral lessee, its agents, successors or assigns, shall not interfere with nor hinder the reasonable surface use by the Department of Natural Resources, its Offices or Commissions, as herein above reserved.

Applicant: LESLIE M. COOPER

Bidder	Cash Payment	Price/ Acre	Rental	Oil	Gas	Other

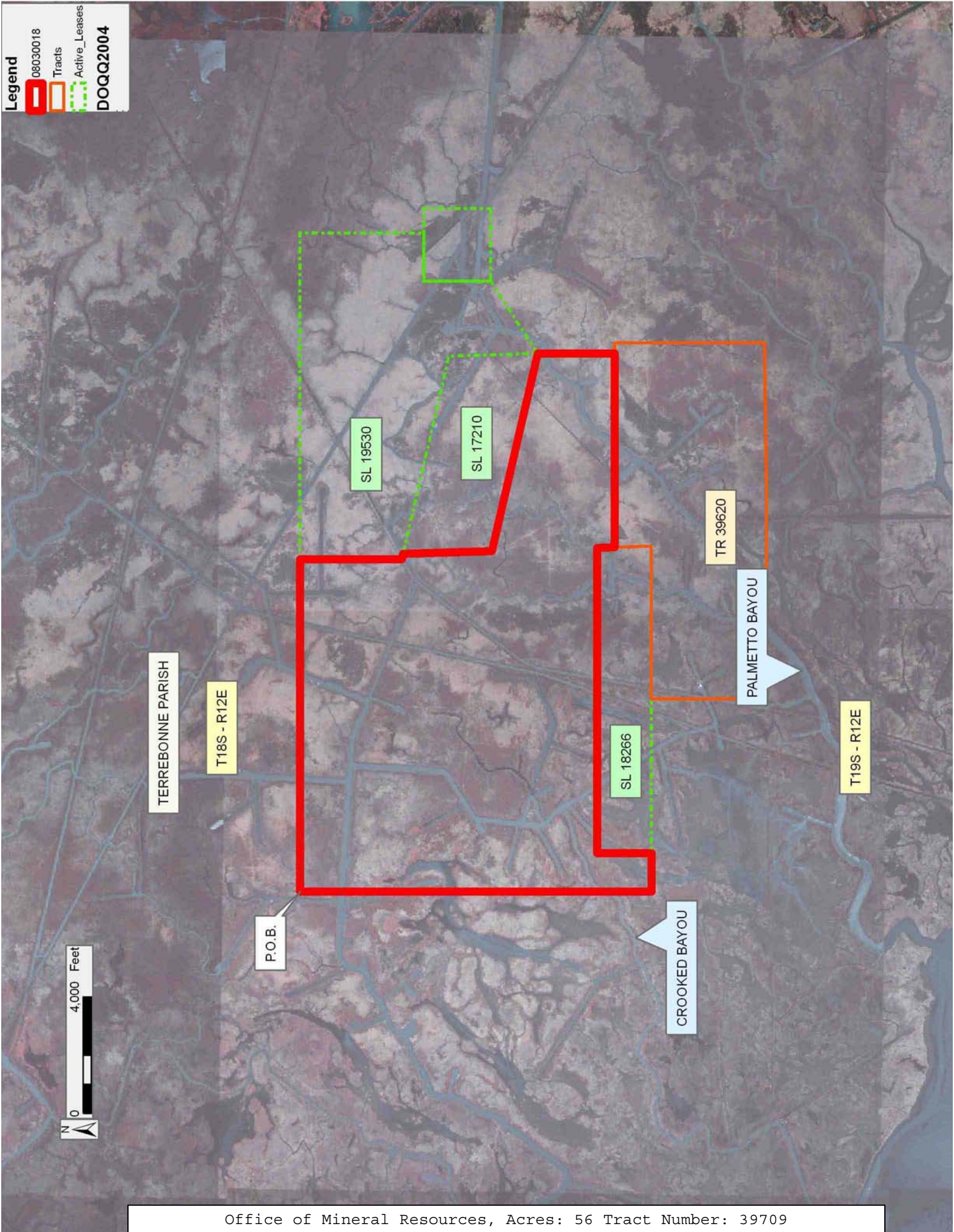
Legend

08030018

Tracts

Active_Leases

DOQQ2004



TRACT 39710 - Portion of Block 49, Breton Sound Area, Plaquemines Parish, Louisiana

All of the lands now or formerly constituting the beds and bottoms of all water bodies of every nature and description as to which title is vested in the State of Louisiana, together with all islands arising therein and other lands formed by accretion or by reliction, where allowed by law, excepting tax adjudicated lands, and not presently under mineral lease on March 12, 2008, situated in Plaquemines Parish, Louisiana, and more particularly described as follows: Beginning at a point located on the North line of Block 49, Breton Sound Area, having Coordinates of X = 2,642,681.00 and Y = 292,830.00; thence East 7,419.00 feet along the North line of said Block 49 to its Northeast corner having Coordinates of X = 2,650,100.00 and Y = 292,830.00; thence South 890.00 feet along the East line of said Block 49 to the Northeast corner of State Lease No. 17239 having Coordinates of X = 2,650,100.00 and Y = 291,940.00; thence along the North, West and South boundary of said State Lease No. 17239 the following courses: West 2,429.00 feet to a point having Coordinates of X = 2,647,671.00 and Y = 291,940.00, South 2,757.00 feet to a point having Coordinates of X = 2,647,671.00 and Y = 289,183.00 and East 2,429.00 feet to its Southeast corner located on the East line of said Block 49 having Coordinates of X = 2,650,100.00 and Y = 289,183.00; thence South 11,103.00 feet along the East line of said Block 49 to its Southeast corner having Coordinates of X = 2,650,100.00 and Y = 278,080.00; thence West 7,419.00 feet along the South line of said Block 49 to a point having Coordinates of X = 2,642,681.00 and Y = 278,080.00; thence North 4,088.54 feet to a point on the South boundary of State Lease No. 18625 having Coordinates of X = 2,642,681.00 and Y = 282,168.54; thence along the South, East and North boundary of said State Lease No. 18625 the following courses: South 75 degrees 51 minutes 46 seconds East 432.09 feet to a point having Coordinates of X = 2,643,100.00 and Y = 282,063.00, North 737.00 feet to a corner having Coordinates of X = 2,643,100.00 and Y = 282,800.00 and North 55 degrees 41 minutes 32 seconds West 507.25 feet to a point having Coordinates of X = 2,642,681.00 and Y = 283,085.91; thence North 9,744.09 feet to the point of beginning, containing approximately **2,350.48 acres**, all as more particularly outlined on a plat on file in the Office of Mineral Resources, Department of Natural Resources. All bearings, distances and coordinates are based on Louisiana Coordinate System of 1927, (North or South Zone), where applicable.

NOTE: The above description of the Tract nominated for lease has been provided and corrected, where required, exclusively by the nomination party. Any mineral lease selected from this Tract and awarded by the Louisiana State Mineral Board shall be without warranty of any kind, either express, implied, or statutory, including, but not limited to, the implied warranties of merchantability and fitness for a particular purpose. Should the mineral lease awarded by the Louisiana State Mineral Board be subsequently modified, cancelled or abrogated due to the existence of conflicting leases, operating agreements, private claims or other future obligations or conditions which may affect all or any portion

of the leased Tract, it shall not relieve the Lessee of the obligation to pay any bonus due thereon to the Louisiana State Mineral Board, nor shall the Louisiana State Mineral Board be obligated to refund any consideration paid by the Lessor prior to such modification, cancellation, or abrogation, including, but not limited to, bonuses, rentals and royalties.

NOTE: The State of Louisiana does hereby reserve, and this lease shall be subject to, the imprescriptible right of surface use in the nature of a servitude in favor of the Department of Natural Resources, including its Offices and Commissions, for the sole purpose of implementing, constructing, servicing and maintaining approved coastal zone management and/or restoration projects. Utilization of any and all rights derived under this lease by the mineral lessee, its agents, successors or assigns, shall not interfere with nor hinder the reasonable surface use by the Department of Natural Resources, its Offices or Commissions, as herein above reserved.

Applicant: CYPRESS ENERGY CORPORATION

Bidder	Cash Payment	Price/ Acre	Rental	Oil	Gas	Other

Legend

08030039

Blocks

Active_Leases

