

**TRACT 39671 - Portion of Block 46, Chandeleur Sound Addition Area, Revised, St. Bernard Parish, Louisiana**

All of the lands now or formerly constituting the beds and bottoms of all water bodies of every nature and description as to which title is vested in the State of Louisiana, together with all islands arising therein and other lands formed by accretion or by reliction, where allowed by law, excepting tax adjudicated lands, and not presently under mineral lease on March 12, 2008, situated in St. Bernard Parish, Louisiana, and more particularly described as follows: Beginning at the Southwest Corner of Block 46, Chandeleur Sound Area Addition, having Coordinates of X = 2,620,600.00 and Y = 484,580.00; thence North 7,375.00 feet along the West line of said Block 46 to a point having Coordinates of X = 2,620,600.00 and Y = 491,955.00; thence East 14,750.00 feet to a point on the East line of said Block 46, having Coordinates of X = 2,635,350.00 and Y = 491,955.00; thence South 7,375.00 feet along said East line of Block 46 to its Southeast Corner, having Coordinates of X = 2,635,350.00 and Y = 484,580.00; thence West 14,750.00 feet along the South line of said Block 46 to the point of beginning, containing approximately **2,403 acres**, all as more particularly outlined on a plat on file in the Office of Mineral Resources, Department of Natural Resources. All bearings, distances and coordinates are based on Louisiana Coordinate System of 1927, (North or South Zone), where applicable.

NOTE: The above description of the Tract nominated for lease has been provided and corrected, where required, exclusively by the nomination party. Any mineral lease selected from this Tract and awarded by the Louisiana State Mineral Board shall be without warranty of any kind, either express, implied, or statutory, including, but not limited to, the implied warranties of merchantability and fitness for a particular purpose. Should the mineral lease awarded by the Louisiana State Mineral Board be subsequently modified, cancelled or abrogated due to the existence of conflicting leases, operating agreements, private claims or other future obligations or conditions which may affect all or any portion of the leased Tract, it shall not relieve the Lessee of the obligation to pay any bonus due thereon to the Louisiana State Mineral Board, nor shall the Louisiana State Mineral Board be obligated to refund any consideration paid by the Lessor prior to such modification, cancellation, or abrogation, including, but not limited to, bonuses, rentals and royalties.

NOTE: The Office of Mineral Resources will require a minimum bonus of \$230 per acre and a minimum royalty of 23%.

NOTE: The State of Louisiana does hereby reserve, and this lease shall be subject to, the imprescriptible right of surface use in the nature of a servitude in favor of the Department of Natural Resources, including its Offices and Commissions, for the sole purpose of implementing, constructing, servicing and maintaining approved coastal zone management and/or restoration projects. Utilization of any and all rights derived under this lease by the mineral lessee, its agents, successors or assigns, shall not interfere with nor hinder the reasonable surface use by the

Department of Natural Resources, its Offices or Commissions, as herein above reserved.

NOTE: The Department of Wildlife and Fisheries has designated certain areas in the coastal waters of the State of Louisiana as Oyster Seed Bed Areas. The exact location of those Seed Bed Areas must be obtained from the Department of Wildlife and Fisheries and any work done under a mineral lease from the State of Louisiana may necessarily be conducted in conformity with the rules and regulations promulgated by the said Department of Wildlife and Fisheries for Oyster Seed Bed Areas.

Applicant: CYPRESS ENERGY CORPORATION

Bidder	Cash Payment	Price/Acre	Rental	Oil	Gas	Other

Legend  
08030063  
Blocks  
DOQQ2004

ST BERNARD PARISH

CX00046

THREE MILE BAY

0 2,000 Feet

T12S - R18E

INDIAN MOUND BAY

CHANDELEUR SOUND AREA ADDITION, REVISED

CX00047

T12S - R18E

P.O.B.

**TRACT 39672 - Portion of Block 45, Chandeleur Sound Addition Area, Revised, St. Bernard Parish, Louisiana**

All of the lands now or formerly constituting the beds and bottoms of all water bodies of every nature and description as to which title is vested in the State of Louisiana, together with all islands arising therein and other lands formed by accretion or by reliction, where allowed by law, excepting tax adjudicated lands, and not presently under mineral lease on March 12, 2008, situated in St. Bernard Parish, Louisiana, and more particularly described as follows: Beginning at the Southwest Corner of Block 45, Chandeleur Sound Area Addition, having Coordinates of X = 2,635,350.00 and Y = 484,580.00; thence North 7,375.00 feet along the West line of said Block 45 to a point having Coordinates of X = 2,635,350.00 and Y = 491,955.00; thence East 14,750.00 feet to a point on the East line of said Block 45, having Coordinates of X = 2,650,100.00 and Y = 491,955.00; thence South 7,375.00 feet along said East line of Block 46 to its Southeast Corner, having Coordinates of X = 2,650,100.00 and Y = 484,580.00; thence West 14,750.00 feet along the South line of said Block 45 to the point of beginning, containing approximately **2,426 acres**, all as more particularly outlined on a plat on file in the Office of Mineral Resources, Department of Natural Resources. All bearings, distances and coordinates are based on Louisiana Coordinate System of 1927, (North or South Zone), where applicable.

NOTE: The above description of the Tract nominated for lease has been provided and corrected, where required, exclusively by the nomination party. Any mineral lease selected from this Tract and awarded by the Louisiana State Mineral Board shall be without warranty of any kind, either express, implied, or statutory, including, but not limited to, the implied warranties of merchantability and fitness for a particular purpose. Should the mineral lease awarded by the Louisiana State Mineral Board be subsequently modified, cancelled or abrogated due to the existence of conflicting leases, operating agreements, private claims or other future obligations or conditions which may affect all or any portion of the leased Tract, it shall not relieve the Lessee of the obligation to pay any bonus due thereon to the Louisiana State Mineral Board, nor shall the Louisiana State Mineral Board be obligated to refund any consideration paid by the Lessor prior to such modification, cancellation, or abrogation, including, but not limited to, bonuses, rentals and royalties.

NOTE: The Office of Mineral Resources will require a minimum bonus of \$230 per acre and a minimum royalty of 23%.

NOTE: The State of Louisiana does hereby reserve, and this lease shall be subject to, the imprescriptible right of surface use in the nature of a servitude in favor of the Department of Natural Resources, including its Offices and Commissions, for the sole purpose of implementing, constructing, servicing and maintaining approved coastal zone management and/or restoration projects. Utilization of any and all rights derived under this lease by the mineral lessee, its agents, successors or assigns,

shall not interfere with nor hinder the reasonable surface use by the Department of Natural Resources, its Offices or Commissions, as herein above reserved.

NOTE: The Department of Wildlife and Fisheries has designated certain areas in the coastal waters of the State of Louisiana as Oyster Seed Bed Areas. The exact location of those Seed Bed Areas must be obtained from the Department of Wildlife and Fisheries and any work done under a mineral lease from the State of Louisiana may necessarily be conducted in conformity with the rules and regulations promulgated by the said Department of Wildlife and Fisheries for Oyster Seed Bed Areas.

Applicant: CYPRESS ENERGY CORPORATION

Bidder	Cash Payment	Price/Acre	Rental	Oil	Gas	Other

Legend  
08030065  
Blocks  
DOQQ2004



ST BERNARD PARISH

INDIAN MOUND BAY

CX0045

T12S - R19E



CX0048

CHANDELEUR SOUND AREA ADDITION, REVISED

P.O.B.

**TRACT 39673 - St. Bernard Parish, Louisiana**

All of the lands now or formerly constituting the beds and bottoms of all water bodies of every nature and description as to which title is vested in the State of Louisiana, together with all islands arising therein and other lands formed by accretion or by reliction, where allowed by law, excepting tax adjudicated lands, and not presently under mineral lease on March 12, 2008, situated in St. Bernard Parish, Louisiana, and more particularly described as follows: Beginning at a point said to be on the Eastern boundary of the Biloxi Wildlife Management Area having Coordinates of X = 2,599,526.23 and Y = 479,869.00; thence Northerly along the meanders of the Biloxi Wildlife Management Area to a point also said to be on the Eastern boundary of the Biloxi Wildlife Management Area, having Coordinates of X = 2,599,095.00 and Y = 491,308.00; thence Westerly to a point also said to be on the Eastern boundary of the Biloxi Wildlife Management Area, having Coordinates of X = 2,593,692.34 and Y = 491,096.13; thence North for a distance of 858.87 feet to a point having Coordinates of X = 2,593,692.34 and Y = 491,955.00; thence East for a distance of 13,557.66 feet to a point having Coordinates of X = 2,607,250.00 and Y = 491,955.00; thence South for a distance of 14,750.00 feet to a point having Coordinates of X = 2,607,250.00 and Y = 477,205.00; thence South 87 degrees 35 minutes 14 seconds West 2,511.99 feet to a point having Coordinates of X = 2,604,740.24 and Y = 477,099.25; thence North 02 degrees 24 minutes 46 seconds West 2,772.21 feet to a point having Coordinates of X = 2,604,623.53 and Y = 479,869.00; thence West 5,097.30 feet to the point of beginning, (the intended area excludes any portion of the Biloxi Wildlife Management Area), containing approximately **2391 acres**, all as more particularly outlined on a plat on file in the Office of Mineral Resources, Department of Natural Resources. All bearings, distances and coordinates are based on Louisiana Coordinate System of 1927, (North or South Zone), where applicable.

NOTE: The above description of the Tract nominated for lease has been provided and corrected, where required, exclusively by the nomination party. Any mineral lease selected from this Tract and awarded by the Louisiana State Mineral Board shall be without warranty of any kind, either express, implied, or statutory, including, but not limited to, the implied warranties of merchantability and fitness for a particular purpose. Should the mineral lease awarded by the Louisiana State Mineral Board be subsequently modified, cancelled or abrogated due to the existence of conflicting leases, operating agreements, private claims or other future obligations or conditions which may affect all or any portion of the leased Tract, it shall not relieve the Lessee of the obligation to pay any bonus due thereon to the Louisiana State Mineral Board, nor shall the Louisiana State Mineral Board be obligated to refund any consideration paid by the Lessor prior to such modification, cancellation, or abrogation, including, but not limited to, bonuses, rentals and royalties.

NOTE: The Office of Mineral Resources will require a minimum bonus of \$230 per acre and a minimum royalty of 23%.

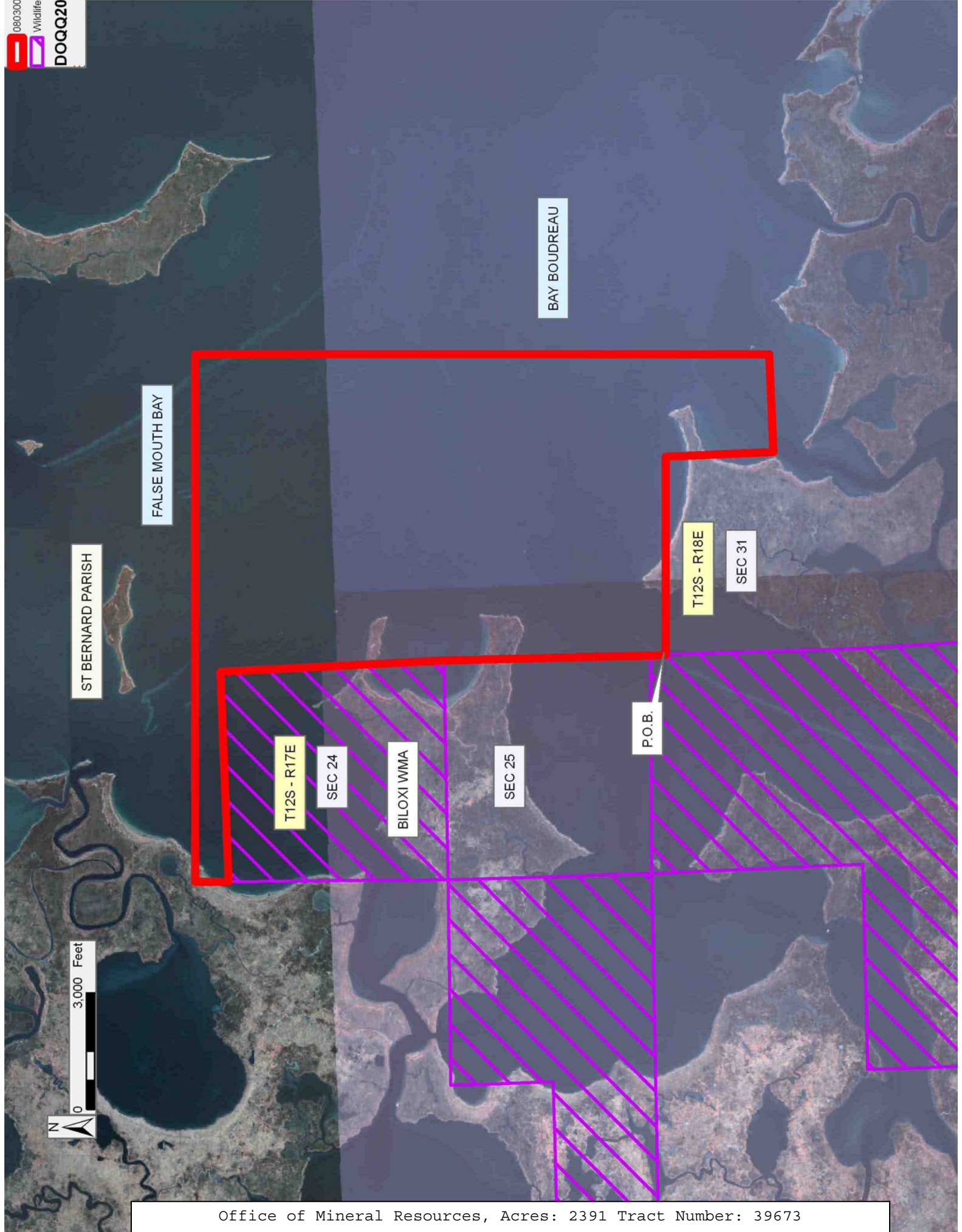
NOTE: The State of Louisiana does hereby reserve, and this lease shall be subject to, the imprescriptible right of surface use in the nature of a servitude in favor of the Department of Natural Resources, including its Offices and Commissions, for the sole purpose of implementing, constructing, servicing and maintaining approved coastal zone management and/or restoration projects. Utilization of any and all rights derived under this lease by the mineral lessee, its agents, successors or assigns, shall not interfere with nor hinder the reasonable surface use by the Department of Natural Resources, its Offices or Commissions, as herein above reserved.

NOTE: The Department of Wildlife and Fisheries has designated certain areas in the coastal waters of the State of Louisiana as Oyster Seed Bed Areas. The exact location of those Seed Bed Areas must be obtained from the Department of Wildlife and Fisheries and any work done under a mineral lease from the State of Louisiana may necessarily be conducted in conformity with the rules and regulations promulgated by the said Department of Wildlife and Fisheries for Oyster Seed Bed Areas.

Applicant: CYPRESS ENERGY CORPORATION

Bidder	Cash Payment	Price/Acre	Rental	Oil	Gas	Other





**TRACT 39674 - St. Bernard Parish, Louisiana**

All of the lands now or formerly constituting the beds and bottoms of all water bodies of every nature and description as to which title is vested in the State of Louisiana, together with all islands arising therein and other lands formed by accretion or by reliction, where allowed by law, excepting tax adjudicated lands, and not presently under mineral lease on March 12, 2008, situated in St. Bernard Parish, Louisiana, and more particularly described as follows: Beginning on the Northwest corner of Block 47, Chandeleur Sound Area Addition, having Coordinates of X = 2,620,600.00 and Y = 484,580.00; thence South, along the West line of Block 47, Chandeleur Sound Area Addition, 7,375.00 feet to a point having Coordinates of X = 2,620,600.00 and Y = 477,205.00; thence West 5,625.00 feet to a point on the East boundary of State Lease No. 19065 having Coordinates of X = 2,614,975.00 and Y = 477,205.00; thence North, along the East boundary State Lease No. 19065, 647.00 feet to the Northeast corner of State Lease No. 19065 having Coordinates of X = 2,614,975.00 and Y = 477,852.00; thence South 86 degrees 47 minutes 05 seconds West, along the North boundary of State Lease No. 19065, 4,225.65 feet to the Northwest Corner of State Lease No. 19065 having Coordinates of X = 2,610,756.00 and Y = 477,615.00; thence South, along the West boundary of State Lease No. 19065, 410.00 feet to a point having Coordinates of X = 2,610,756.00 and Y = 477,205.00; thence West 3,506.00 feet to a point having Coordinates of X = 2,607,250.00 and Y = 477,205.00; thence North 7,375.00 feet to a point having Coordinates of X = 2,607,250.00 and Y = 484,580.00; thence East 13,350.00 feet to the point of beginning, containing approximately **2208 acres**, all as more particularly outlined on a plat on file in the Office of Mineral Resources, Department of Natural Resources. All bearings, distances and coordinates are based on Louisiana Coordinate System of 1927, (North or South Zone), where applicable.

NOTE: The above description of the Tract nominated for lease has been provided and corrected, where required, exclusively by the nomination party. Any mineral lease selected from this Tract and awarded by the Louisiana State Mineral Board shall be without warranty of any kind, either express, implied, or statutory, including, but not limited to, the implied warranties of merchantability and fitness for a particular purpose. Should the mineral lease awarded by the Louisiana State Mineral Board be subsequently modified, cancelled or abrogated due to the existence of conflicting leases, operating agreements, private claims or other future obligations or conditions which may affect all or any portion of the leased Tract, it shall not relieve the Lessee of the obligation to pay any bonus due thereon to the Louisiana State Mineral Board, nor shall the Louisiana State Mineral Board be obligated to refund any consideration paid by the Lessor prior to such modification, cancellation, or abrogation, including, but not limited to, bonuses, rentals and royalties.

NOTE: The Office of Mineral Resources will require a minimum bonus of \$230 per acre and a minimum royalty of 23%.

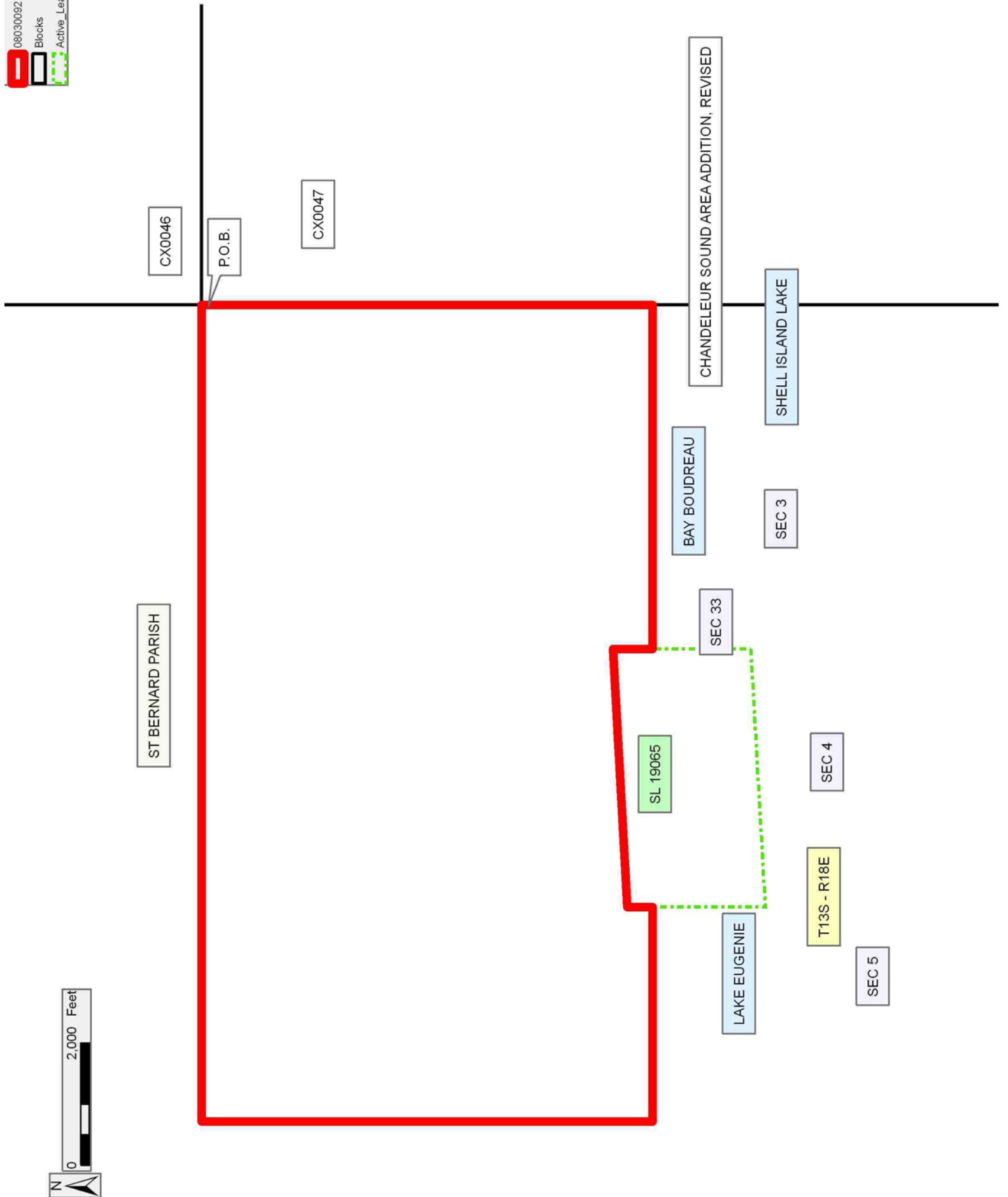
NOTE: The State of Louisiana does hereby reserve, and this lease shall be subject to, the imprescriptible right of surface use in the nature of a servitude in favor of the Department of Natural Resources, including its Offices and Commissions, for the sole purpose of implementing, constructing, servicing and maintaining approved coastal zone management and/or restoration projects. Utilization of any and all rights derived under this lease by the mineral lessee, its agents, successors or assigns, shall not interfere with nor hinder the reasonable surface use by the Department of Natural Resources, its Offices or Commissions, as herein above reserved.

NOTE: The Department of Wildlife and Fisheries has designated certain areas in the coastal waters of the State of Louisiana as Oyster Seed Bed Areas. The exact location of those Seed Bed Areas must be obtained from the Department of Wildlife and Fisheries and any work done under a mineral lease from the State of Louisiana may necessarily be conducted in conformity with the rules and regulations promulgated by the said Department of Wildlife and Fisheries for Oyster Seed Bed Areas.

Applicant: CYPRESS ENERGY CORPORATION

Bidder	Cash Payment	Price/Acre	Rental	Oil	Gas	Other

08030092  
Blocks  
Active\_Lease



ST BERNARD PARISH

CX0046

P.O.B.

CX0047

BAY BOUDREAU

CHANDELEUR SOUND AREA ADDITION, REVISED

SHELL ISLAND LAKE

SEC 3

SEC 33

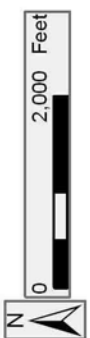
SL 19065

SEC 4

LAKE EUGENIE

T13S - R18E

SEC 5



**TRACT 39675 - Portion of Block 47, Chandeleur Sound Addition Area, Revised, St. Bernard Parish, Louisiana**

All of the lands now or formerly constituting the beds and bottoms of all water bodies of every nature and description as to which title is vested in the State of Louisiana, together with all islands arising therein and other lands formed by accretion or by reliction, where allowed by law, excepting tax adjudicated lands, and not presently under mineral lease on March 12, 2008, situated in St. Bernard Parish, Louisiana, and more particularly described as follows: Beginning at the Northwest Corner of Block 47, Chandeleur Sound Area Addition, having Coordinates of X = 2,620,600.00 and Y = 484,580.00; thence East 14,750.00 feet along the North line of said Block 47 to its Northeast Corner, having Coordinates of X = 2,635,350.00 and Y = 484,580.00; thence South 7,375.00 feet along the East line of said Block 47 to a point having Coordinates of X = 2,635,350.00 and Y = 477,205.00; thence West 14,750.00 feet to a point on the West line of said Block 47, having Coordinates of X = 2,620,600.00 and Y = 477,205.00; thence North 7,375.00 feet along the West line of said Block 47 to the point of beginning, containing approximately **2,220 acres**, all as more particularly outlined on a plat on file in the Office of Mineral Resources, Department of Natural Resources. All bearings, distances and coordinates are based on Louisiana Coordinate System of 1927, (North or South Zone), where applicable.

NOTE: The above description of the Tract nominated for lease has been provided and corrected, where required, exclusively by the nomination party. Any mineral lease selected from this Tract and awarded by the Louisiana State Mineral Board shall be without warranty of any kind, either express, implied, or statutory, including, but not limited to, the implied warranties of merchantability and fitness for a particular purpose. Should the mineral lease awarded by the Louisiana State Mineral Board be subsequently modified, cancelled or abrogated due to the existence of conflicting leases, operating agreements, private claims or other future obligations or conditions which may affect all or any portion of the leased Tract, it shall not relieve the Lessee of the obligation to pay any bonus due thereon to the Louisiana State Mineral Board, nor shall the Louisiana State Mineral Board be obligated to refund any consideration paid by the Lessor prior to such modification, cancellation, or abrogation, including, but not limited to, bonuses, rentals and royalties.

NOTE: The Office of Mineral Resources will require a minimum bonus of \$230 per acre and a minimum royalty of 23%.

NOTE: The State of Louisiana does hereby reserve, and this lease shall be subject to, the imprescriptible right of surface use in the nature of a servitude in favor of the Department of Natural Resources, including its Offices and Commissions, for the sole purpose of implementing, constructing, servicing and maintaining approved coastal zone management and/or restoration projects. Utilization of any and all rights derived under this lease by the mineral lessee, its agents, successors or assigns,

shall not interfere with nor hinder the reasonable surface use by the Department of Natural Resources, its Offices or Commissions, as herein above reserved.

NOTE: The Department of Wildlife and Fisheries has designated certain areas in the coastal waters of the State of Louisiana as Oyster Seed Bed Areas. The exact location of those Seed Bed Areas must be obtained from the Department of Wildlife and Fisheries and any work done under a mineral lease from the State of Louisiana may necessarily be conducted in conformity with the rules and regulations promulgated by the said Department of Wildlife and Fisheries for Oyster Seed Bed Areas.

Applicant: CYPRESS ENERGY CORPORATION

Bidder	Cash Payment	Price/Acre	Rental	Oil	Gas	Other

Legend  
08030066  
Blocks  
DOQQ2004

ST BERNARD PARISH

BAY BOUDREAU

CX0046

T12S - R18E

CX0047

T13S - R18E

CHANDELEUR SOUND AREA ADDITION, REVISED

P.O.B.



**TRACT 39676 - Portion of Block 48, Chandeleur Sound Addition Area, Revised, St. Bernard Parish, Louisiana**

All of the lands now or formerly constituting the beds and bottoms of all water bodies of every nature and description as to which title is vested in the State of Louisiana, together with all islands arising therein and other lands formed by accretion or by reliction, where allowed by law, excepting tax adjudicated lands, and not presently under mineral lease on March 12, 2008, situated in St. Bernard Parish, Louisiana, and more particularly described as follows: Beginning at the Northwest Corner of Block 48, Chandeleur Sound Area Addition, having Coordinates of X = 2,635,350.00 and Y = 484,580.00; thence East 14,750.00 feet along the North line of said Block 48 to its Northeast Corner, having Coordinates of X = 2,650,100.00 and Y = 484,580.00; thence South 7,375.00 feet along the East line of said Block 48 to a point having Coordinates of X = 2,650,100.00 and Y = 477,205.00; thence West 14,750.00 feet to a point on the West line of said Block 48, having Coordinates of X = 2,635,350.00 and Y = 477,205.00; thence North 7,375.00 feet along the West line of said Block 48 to the point of beginning, containing approximately **2,367 acres**, all as more particularly outlined on a plat on file in the Office of Mineral Resources, Department of Natural Resources. All bearings, distances and coordinates are based on Louisiana Coordinate System of 1927, (North or South Zone), where applicable.

NOTE: The above description of the Tract nominated for lease has been provided and corrected, where required, exclusively by the nomination party. Any mineral lease selected from this Tract and awarded by the Louisiana State Mineral Board shall be without warranty of any kind, either express, implied, or statutory, including, but not limited to, the implied warranties of merchantability and fitness for a particular purpose. Should the mineral lease awarded by the Louisiana State Mineral Board be subsequently modified, cancelled or abrogated due to the existence of conflicting leases, operating agreements, private claims or other future obligations or conditions which may affect all or any portion of the leased Tract, it shall not relieve the Lessee of the obligation to pay any bonus due thereon to the Louisiana State Mineral Board, nor shall the Louisiana State Mineral Board be obligated to refund any consideration paid by the Lessor prior to such modification, cancellation, or abrogation, including, but not limited to, bonuses, rentals and royalties.

NOTE: The Office of Mineral Resources will require a minimum bonus of \$230 per acre and a minimum royalty of 23%.

NOTE: The State of Louisiana does hereby reserve, and this lease shall be subject to, the imprescriptible right of surface use in the nature of a servitude in favor of the Department of Natural Resources, including its Offices and Commissions, for the sole purpose of implementing, constructing, servicing and maintaining approved coastal zone management and/or restoration projects. Utilization of any and all rights derived under this lease by the mineral lessee, its agents, successors or assigns,



shall not interfere with nor hinder the reasonable surface use by the Department of Natural Resources, its Offices or Commissions, as herein above reserved.

NOTE: The Department of Wildlife and Fisheries has designated certain areas in the coastal waters of the State of Louisiana as Oyster Seed Bed Areas. The exact location of those Seed Bed Areas must be obtained from the Department of Wildlife and Fisheries and any work done under a mineral lease from the State of Louisiana may necessarily be conducted in conformity with the rules and regulations promulgated by the said Department of Wildlife and Fisheries for Oyster Seed Bed Areas.

Applicant: CYPRESS ENERGY CORPORATION

Bidder	Cash Payment	Price/Acre	Rental	Oil	Gas	Other

**Legend**  
08030068  
Blocks  
DOQQ2004



P.O.B.

ST BERNARD PARISH

INDIAN MOUND BAY

CX0045



T13S - R19E

CX0048

CHANDELEUR SOUND AREA ADDITION, REVISED

DRUM BAY

**TRACT 39677 - Portion of Block 47, Chandeleur Sound Addition Area, Revised, St. Bernard Parish, Louisiana**

All of the lands now or formerly constituting the beds and bottoms of all water bodies of every nature and description as to which title is vested in the State of Louisiana, together with all islands arising therein and other lands formed by accretion or by reliction, where allowed by law, excepting tax adjudicated lands, and not presently under mineral lease on March 12, 2008, situated in St. Bernard Parish, Louisiana, and more particularly described as follows: Beginning at the Southwest Corner of Block 47, Chandeleur Sound Area Addition, having Coordinates of X = 2,620,600.00 and Y = 469,830.00; thence North 7,375.00 feet along the West line of said Block 47 to a point having Coordinates of X = 2,620,600.00 and Y = 477,205.00; thence East 14,750.00 feet to a point on the East line of said Block 47, having Coordinates of X = 2,635,350.00 and Y = 477,205.00; thence South 7,375.00 feet along the East line of said Block 47 to its Southeast Corner, having Coordinates of X = 2,635,350.00 and Y = 469,830.00; thence West 14,750.00 feet along the South line of said Block 47 to the point of beginning, containing approximately **2,232 acres**, all as more particularly outlined on a plat on file in the Office of Mineral Resources, Department of Natural Resources. All bearings, distances and coordinates are based on Louisiana Coordinate System of 1927, (North or South Zone), where applicable.

NOTE: The above description of the Tract nominated for lease has been provided and corrected, where required, exclusively by the nomination party. Any mineral lease selected from this Tract and awarded by the Louisiana State Mineral Board shall be without warranty of any kind, either express, implied, or statutory, including, but not limited to, the implied warranties of merchantability and fitness for a particular purpose. Should the mineral lease awarded by the Louisiana State Mineral Board be subsequently modified, cancelled or abrogated due to the existence of conflicting leases, operating agreements, private claims or other future obligations or conditions which may affect all or any portion of the leased Tract, it shall not relieve the Lessee of the obligation to pay any bonus due thereon to the Louisiana State Mineral Board, nor shall the Louisiana State Mineral Board be obligated to refund any consideration paid by the Lessor prior to such modification, cancellation, or abrogation, including, but not limited to, bonuses, rentals and royalties.

NOTE: The Office of Mineral Resources will require a minimum bonus of \$230 per acre and a minimum royalty of 23%.

NOTE: The State of Louisiana does hereby reserve, and this lease shall be subject to, the imprescriptible right of surface use in the nature of a servitude in favor of the Department of Natural Resources, including its Offices and Commissions, for the sole purpose of implementing, constructing, servicing and maintaining approved coastal zone management and/or restoration projects. Utilization of any and all rights derived under this lease by the mineral lessee, its agents, successors or assigns,

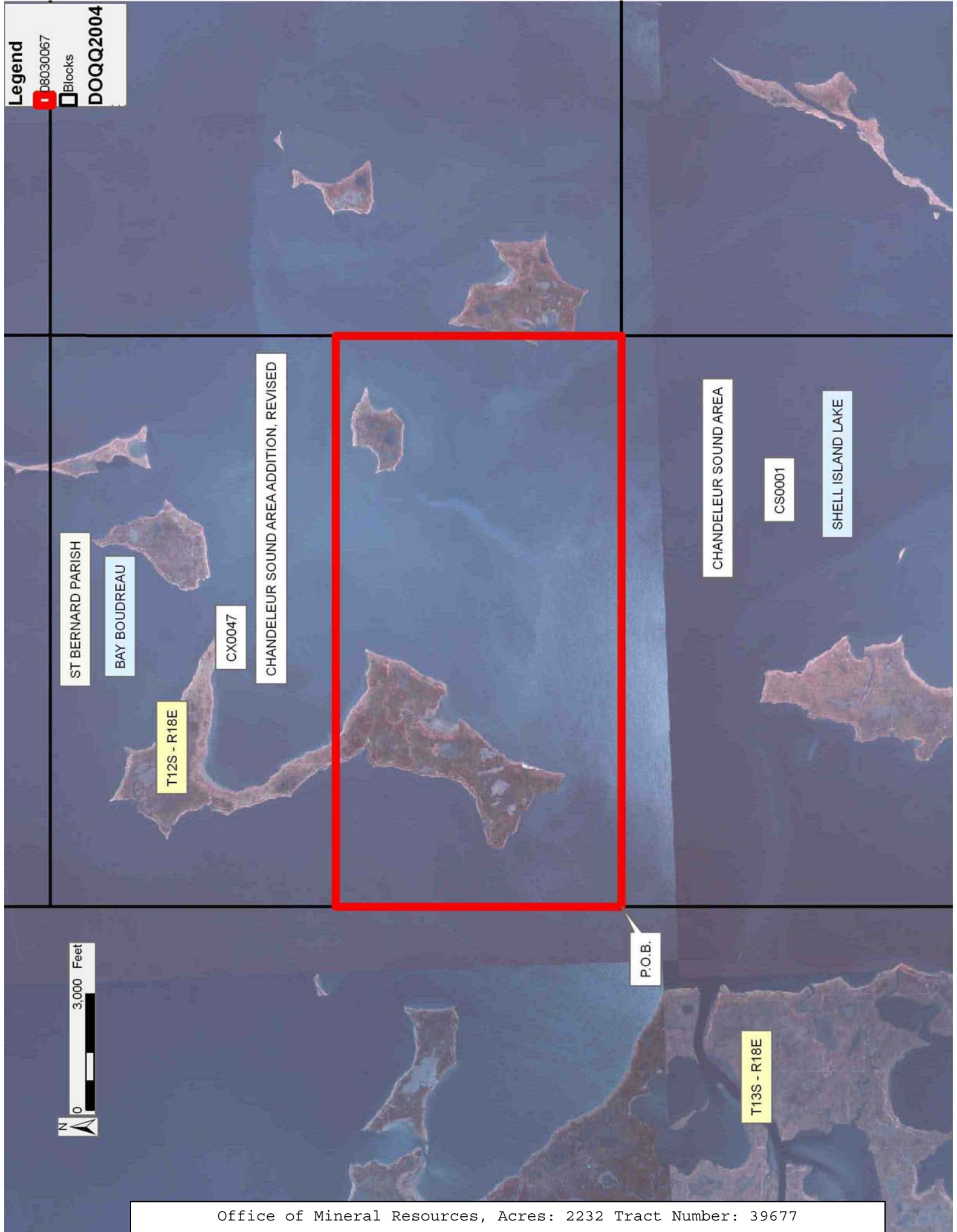
shall not interfere with nor hinder the reasonable surface use by the Department of Natural Resources, its Offices or Commissions, as herein above reserved.

NOTE: The Department of Wildlife and Fisheries has designated certain areas in the coastal waters of the State of Louisiana as Oyster Seed Bed Areas. The exact location of those Seed Bed Areas must be obtained from the Department of Wildlife and Fisheries and any work done under a mineral lease from the State of Louisiana may necessarily be conducted in conformity with the rules and regulations promulgated by the said Department of Wildlife and Fisheries for Oyster Seed Bed Areas.

Applicant: CYPRESS ENERGY CORPORATION

Bidder	Cash Payment	Price/Acre	Rental	Oil	Gas	Other

**Legend**  
1 06030067  
Blocks  
DOQQ2004



**TRACT 39678 - Portion of Block 48, Chandeleur Sound Addition Area, Revised, St. Bernard Parish, Louisiana**

All of the lands now or formerly constituting the beds and bottoms of all water bodies of every nature and description as to which title is vested in the State of Louisiana, together with all islands arising therein and other lands formed by accretion or by reliction, where allowed by law, excepting tax adjudicated lands, and not presently under mineral lease on March 12, 2008, situated in St. Bernard Parish, Louisiana, and more particularly described as follows: Beginning at the Southwest Corner of Block 48, Chandeleur Sound Area Addition, having Coordinates of X = 2,635,350.00 and Y = 469,830.00; thence North 7,375.00 feet along the West line of said Block 48 to a point having Coordinates of X = 2,635,350.00 and Y = 477,205.00; thence East 14,750.00 feet to a point on the East line of said Block 48, having Coordinates of X = 2,650,100.00 and Y = 477,205.00; thence South 7,375.00 feet along said East line of Block 48 to its Southeast Corner, having Coordinates of X = 2,650,100.00 and Y = 469,830.00; thence West 14,750.00 feet along the South line of said Block 48 to the point of beginning, containing approximately **1,801 acres**, all as more particularly outlined on a plat on file in the Office of Mineral Resources, Department of Natural Resources. All bearings, distances and coordinates are based on Louisiana Coordinate System of 1927, (North or South Zone), where applicable.

NOTE: The above description of the Tract nominated for lease has been provided and corrected, where required, exclusively by the nomination party. Any mineral lease selected from this Tract and awarded by the Louisiana State Mineral Board shall be without warranty of any kind, either express, implied, or statutory, including, but not limited to, the implied warranties of merchantability and fitness for a particular purpose. Should the mineral lease awarded by the Louisiana State Mineral Board be subsequently modified, cancelled or abrogated due to the existence of conflicting leases, operating agreements, private claims or other future obligations or conditions which may affect all or any portion of the leased Tract, it shall not relieve the Lessee of the obligation to pay any bonus due thereon to the Louisiana State Mineral Board, nor shall the Louisiana State Mineral Board be obligated to refund any consideration paid by the Lessor prior to such modification, cancellation, or abrogation, including, but not limited to, bonuses, rentals and royalties.

NOTE: The Office of Mineral Resources will require a minimum bonus of \$230 per acre and a minimum royalty of 23%.

NOTE: The State of Louisiana does hereby reserve, and this lease shall be subject to, the imprescriptible right of surface use in the nature of a servitude in favor of the Department of Natural Resources, including its Offices and Commissions, for the sole purpose of implementing, constructing, servicing and maintaining approved coastal zone management and/or restoration projects. Utilization of any and all rights derived under this lease by the mineral lessee, its agents, successors or assigns,

shall not interfere with nor hinder the reasonable surface use by the Department of Natural Resources, its Offices or Commissions, as herein above reserved.

NOTE: The Department of Wildlife and Fisheries has designated certain areas in the coastal waters of the State of Louisiana as Oyster Seed Bed Areas. The exact location of those Seed Bed Areas must be obtained from the Department of Wildlife and Fisheries and any work done under a mineral lease from the State of Louisiana may necessarily be conducted in conformity with the rules and regulations promulgated by the said Department of Wildlife and Fisheries for Oyster Seed Bed Areas.

Applicant: CYPRESS ENERGY CORPORATION

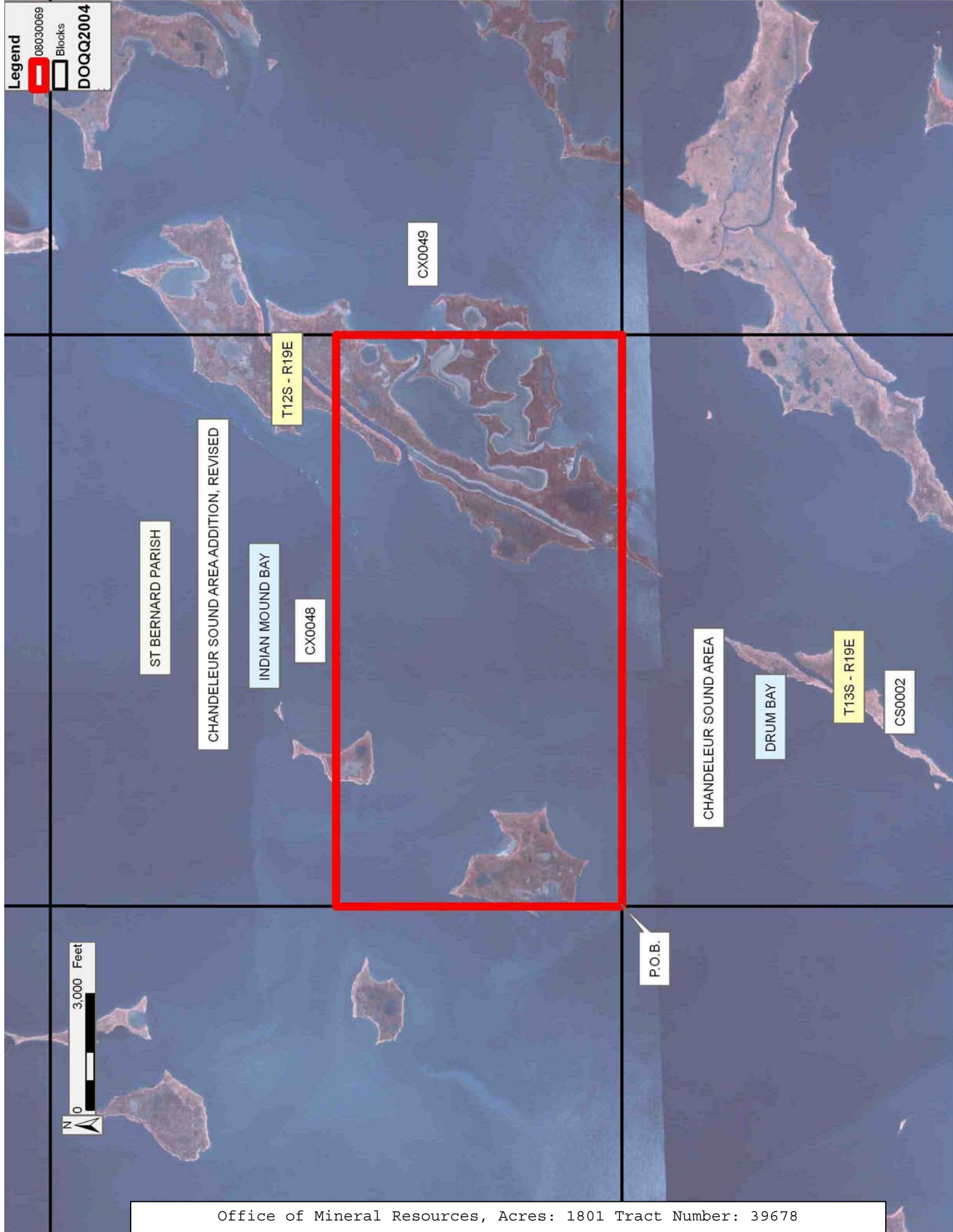
Bidder	Cash Payment	Price/Acre	Rental	Oil	Gas	Other

**Legend**

08030069

Blocks

DOQQ2004





**TRACT 39679 - St. Bernard Parish, Louisiana**

All of the lands now or formerly constituting the beds and bottoms of all water bodies of every nature and description as to which title is vested in the State of Louisiana, together with all islands arising therein and other lands formed by accretion or by reliction, where allowed by law, excepting tax adjudicated lands, and not presently under mineral lease on March 12, 2008, situated in St. Bernard Parish, Louisiana, and more particularly described as follows: Beginning at a point having Coordinates of X = 2,599,830.37 and Y = 472,482.28; thence North 87 degrees 20 minutes 23 seconds East 5,213.21 feet to a point having Coordinates of X = 2,605,037.96 and Y = 472,724.26; thence North 04 degrees 52 minutes 36 seconds West 2,634.96 feet to a point having Coordinates of X = 2,604,813.96 and Y = 475,349.68; thence North 02 degrees 24 minutes 46 seconds West 1751.12 feet to a point having Coordinates X = 2,604,740.24 and Y = 477,099.25; thence North 87 degrees 35 minutes 14 seconds East for a distance of 2,511.99 feet to a point having Coordinates of X = 2,607,250.00 and Y = 477,205.00; thence South for a distance of 14,750.00 feet to a point having Coordinates of X = 2,607,250.00 and Y = 462,455.00; thence West for a distance of 7,277.43 feet to a point said to be on the Eastern boundary of the Biloxi Wildlife Management Area having Coordinates of X = 2,599,972.57 and Y = 462,455.00; thence Northerly along the meanders of the Biloxi Wildlife Management Area to a point also said to be on the Eastern boundary of the Biloxi Wildlife Management Area also being the point of beginning, (the intended area excludes any portion of the Biloxi Wildlife Management Area), containing approximately **989 acres**, all as more particularly outlined on a plat on file in the Office of Mineral Resources, Department of Natural Resources. All bearings, distances and coordinates are based on Louisiana Coordinate System of 1927, (North or South Zone), where applicable.

NOTE: The above description of the Tract nominated for lease has been provided and corrected, where required, exclusively by the nomination party. Any mineral lease selected from this Tract and awarded by the Louisiana State Mineral Board shall be without warranty of any kind, either express, implied, or statutory, including, but not limited to, the implied warranties of merchantability and fitness for a particular purpose. Should the mineral lease awarded by the Louisiana State Mineral Board be subsequently modified, cancelled or abrogated due to the existence of conflicting leases, operating agreements, private claims or other future obligations or conditions which may affect all or any portion of the leased Tract, it shall not relieve the Lessee of the obligation to pay any bonus due thereon to the Louisiana State Mineral Board, nor shall the Louisiana State Mineral Board be obligated to refund any consideration paid by the Lessor prior to such modification, cancellation, or abrogation, including, but not limited to, bonuses, rentals and royalties.

NOTE: The Office of Mineral Resources will require a minimum bonus of \$230 per acre and a minimum royalty of 23%.

NOTE: The State of Louisiana does hereby reserve, and this lease shall be subject to, the imprescriptible right of surface use in the nature of a servitude in favor of the Department of Natural Resources, including its Offices and Commissions, for the sole purpose of implementing, constructing, servicing and maintaining approved coastal zone management and/or restoration projects. Utilization of any and all rights derived under this lease by the mineral lessee, its agents, successors or assigns, shall not interfere with nor hinder the reasonable surface use by the Department of Natural Resources, its Offices or Commissions, as herein above reserved.

NOTE: The Department of Wildlife and Fisheries has designated certain areas in the coastal waters of the State of Louisiana as Oyster Seed Bed Areas. The exact location of those Seed Bed Areas must be obtained from the Department of Wildlife and Fisheries and any work done under a mineral lease from the State of Louisiana may necessarily be conducted in conformity with the rules and regulations promulgated by the said Department of Wildlife and Fisheries for Oyster Seed Bed Areas.

Applicant: CYPRESS ENERGY CORPORATION

Bidder	Cash Payment	Price/Acre	Rental	Oil	Gas	Other

**Legend**

-  08030095
-  Wildlife  
DOQQ2004



ST BERNARD PARISH

BAY BOUDREAU

T12S - R18E

T13S - R18E

SEC 5

SEC 6

SEC 17

SEC 18

LAKE EUGENIE

BILOXI WMA

P.O.B.

T13S - R17E

SEC 1



**TRACT 39680 - St. Bernard Parish, Louisiana**

All of the lands now or formerly constituting the beds and bottoms of all water bodies of every nature and description as to which title is vested in the State of Louisiana, together with all islands arising therein and other lands formed by accretion or by reliction, where allowed by law, excepting tax adjudicated lands, and not presently under mineral lease on March 12, 2008, situated in St. Bernard Parish, Louisiana, and more particularly described as follows: Beginning at the Southwest corner of Block 47, Chandeleur Sound Area Addition having Coordinates of X = 2,620,600.00 and Y = 469,830.00; thence West 13,350.00 feet to a point having Coordinates of X = 2,607,250.00 and Y = 469,830.00; thence North 7,375.00 feet to a point having Coordinates of X = 2,607,250.00 and Y = 477,205.00; thence East 3,506.00 feet to a point on the West boundary of State Lease No. 19065 having Coordinates of X = 2,610,756.00 and Y = 477,205.00; thence South, along the West boundary of State Lease No. 19065, 1,844.00 feet to the Southwest Corner of State Lease No. 19065 having Coordinates of X = 2,610,756.00 and Y = 475,361.00; thence North 86 degrees 47 minutes 05 seconds East, along the South boundary of State Lease No. 19065, 4,225.65 feet to the Southeast corner of State Lease No. 19065 having Coordinates of X = 2,614,975.00 and Y = 475,598.00; thence North, along the East boundary of State Lease No. 19065, 1,607.00 feet to a point having Coordinates of X = 2,614,975.00 and Y = 477,205.00; thence East 5,625.00 feet to a point on the West line of Block 47, Chandeleur Sound Area Addition having Coordinates of X = 2,620,600.00 and Y = 477,205.00; thence South, along the West line of Block 47, Chandeleur Sound Area Addition, 7,375.00 feet to the point of beginning, containing approximately **1320 acres**, all as more particularly outlined on a plat on file in the Office of Mineral Resources, Department of Natural Resources. All bearings, distances and coordinates are based on Louisiana Coordinate System of 1927, (North or South Zone), where applicable.

NOTE: The above description of the Tract nominated for lease has been provided and corrected, where required, exclusively by the nomination party. Any mineral lease selected from this Tract and awarded by the Louisiana State Mineral Board shall be without warranty of any kind, either express, implied, or statutory, including, but not limited to, the implied warranties of merchantability and fitness for a particular purpose. Should the mineral lease awarded by the Louisiana State Mineral Board be subsequently modified, cancelled or abrogated due to the existence of conflicting leases, operating agreements, private claims or other future obligations or conditions which may affect all or any portion of the leased Tract, it shall not relieve the Lessee of the obligation to pay any bonus due thereon to the Louisiana State Mineral Board, nor shall the Louisiana State Mineral Board be obligated to refund any consideration paid by the Lessor prior to such modification, cancellation, or abrogation, including, but not limited to, bonuses, rentals and royalties.

NOTE: The Office of Mineral Resources will require a minimum bonus of \$230 per acre and a minimum royalty of 23%.

NOTE: The State of Louisiana does hereby reserve, and this lease shall be subject to, the imprescriptible right of surface use in the nature of a servitude in favor of the Department of Natural Resources, including its Offices and Commissions, for the sole purpose of implementing, constructing, servicing and maintaining approved coastal zone management and/or restoration projects. Utilization of any and all rights derived under this lease by the mineral lessee, its agents, successors or assigns, shall not interfere with nor hinder the reasonable surface use by the Department of Natural Resources, its Offices or Commissions, as herein above reserved.

NOTE: The Department of Wildlife and Fisheries has designated certain areas in the coastal waters of the State of Louisiana as Oyster Seed Bed Areas. The exact location of those Seed Bed Areas must be obtained from the Department of Wildlife and Fisheries and any work done under a mineral lease from the State of Louisiana may necessarily be conducted in conformity with the rules and regulations promulgated by the said Department of Wildlife and Fisheries for Oyster Seed Bed Areas.

Applicant: CYPRESS ENERGY CORPORATION

Bidder	Cash Payment	Price/Acre	Rental	Oil	Gas	Other

06030093  
Blocks  
Active\_Lease  
DOQQ2004

CHANDELEUR SOUND AREA ADDITION, REVISED

CX0047

P.O.B.

CS0001

ST BERNARD PARISH

BAY BOUDREAU

SL 19065

T12S - R18E

SEC 34

SEC 3

LAWSON BAY

SEC 10

SEC 4

T13S - R18E

SEC 9

SEC 33

LAKE EUGENIE

SEC 32

SEC 5

SEC 8

