

**TRACT 39661 - St. Bernard Parish, Louisiana**

All of the lands now or formerly constituting the beds and bottoms of all water bodies of every nature and description as to which title is vested in the State of Louisiana, together with all islands arising therein and other lands formed by accretion or by reliction, where allowed by law, excepting tax adjudicated lands, and not presently under mineral lease on March 12, 2008, situated in St. Bernard Parish, Louisiana, and more particularly described as follows: Beginning at a point having Coordinates of X = 2,598,250.00 and Y = 499,330.00; thence North 7,375.00 feet to a point having Coordinates of X = 2,598,250.00 and Y = 506,705.00; thence East 9,000.00 feet to a point having Coordinates of X = 2,607,250.00 and Y = 506,705.00; thence South 7,375.00 feet to a point having Coordinates of X = 2,607,250.00 and Y = 499,330.00; thence West 9,000.00 feet to the point of beginning, containing approximately **960 acres**, all as more particularly outlined on a plat on file in the Office of Mineral Resources, Department of Natural Resources. All bearings, distances and coordinates are based on Louisiana Coordinate System of 1927, (North or South Zone), where applicable.

NOTE: The above description of the Tract nominated for lease has been provided and corrected, where required, exclusively by the nomination party. Any mineral lease selected from this Tract and awarded by the Louisiana State Mineral Board shall be without warranty of any kind, either express, implied, or statutory, including, but not limited to, the implied warranties of merchantability and fitness for a particular purpose. Should the mineral lease awarded by the Louisiana State Mineral Board be subsequently modified, cancelled or abrogated due to the existence of conflicting leases, operating agreements, private claims or other future obligations or conditions which may affect all or any portion of the leased Tract, it shall not relieve the Lessee of the obligation to pay any bonus due thereon to the Louisiana State Mineral Board, nor shall the Louisiana State Mineral Board be obligated to refund any consideration paid by the Lessor prior to such modification, cancellation, or abrogation, including, but not limited to, bonuses, rentals and royalties.

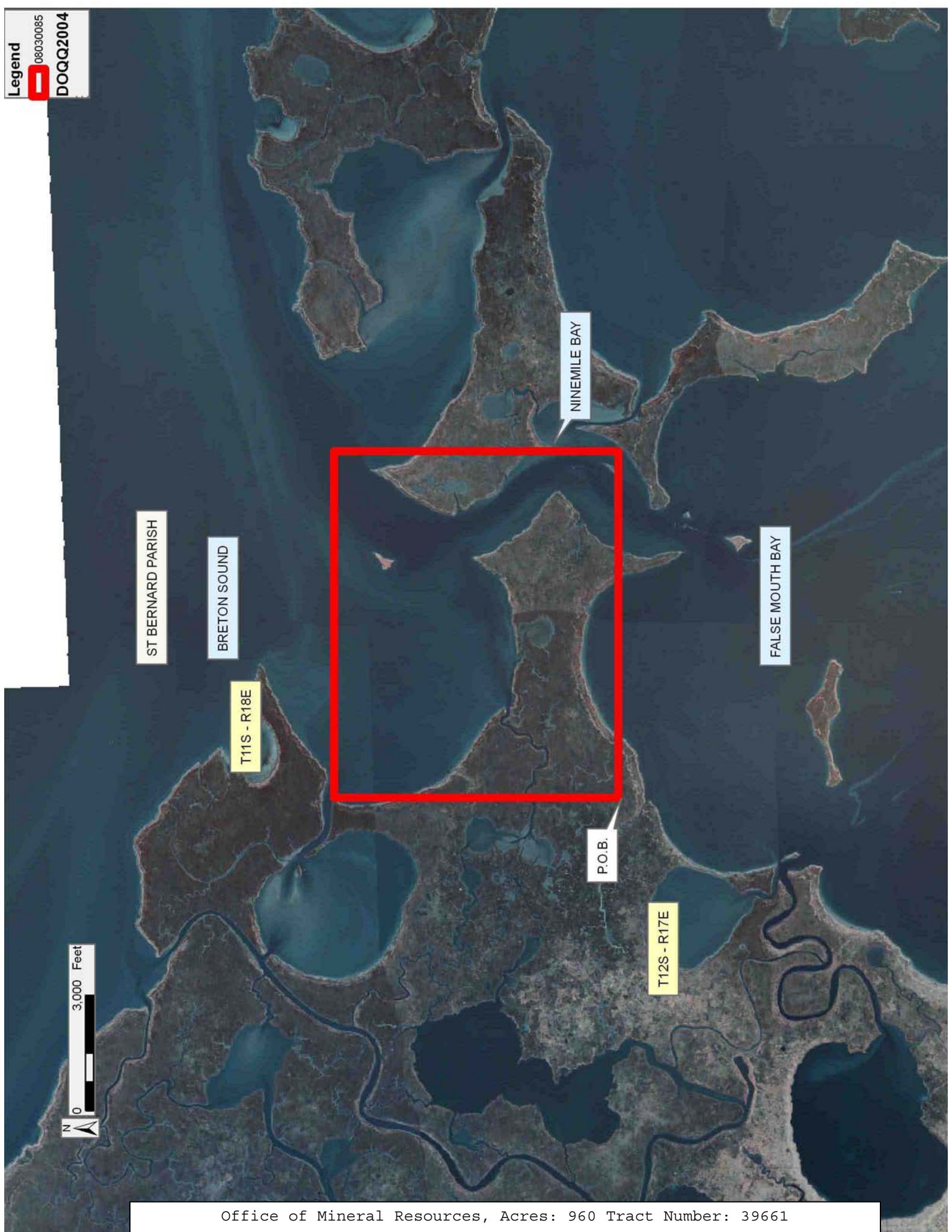
NOTE: The Office of Mineral Resources will require a minimum bonus of \$230 per acre and a minimum royalty of 23%.

NOTE: The State of Louisiana does hereby reserve, and this lease shall be subject to, the imprescriptible right of surface use in the nature of a servitude in favor of the Department of Natural Resources, including its Offices and Commissions, for the sole purpose of implementing, constructing, servicing and maintaining approved coastal zone management and/or restoration projects. Utilization of any and all rights derived under this lease by the mineral lessee, its agents, successors or assigns, shall not interfere with nor hinder the reasonable surface use by the Department of Natural Resources, its Offices or Commissions, as herein above reserved.

NOTE: The Department of Wildlife and Fisheries has designated certain areas in the coastal waters of the State of Louisiana as Oyster Seed Bed Areas. The exact location of those Seed Bed Areas must be obtained from the Department of Wildlife and Fisheries and any work done under a mineral lease from the State of Louisiana may necessarily be conducted in conformity with the rules and regulations promulgated by the said Department of Wildlife and Fisheries for Oyster Seed Bed Areas.

Applicant: CYPRESS ENERGY CORPORATION

Bidder	Cash Payment	Price/Acre	Rental	Oil	Gas	Other



ST BERNARD PARISH

BRETON SOUND

NINEMILE BAY

FALSE MOUTH BAY

T11S - R18E

P.O.B.

T12S - R17E



**TRACT 39662 - St. Bernard Parish, Louisiana**

All of the lands now or formerly constituting the beds and bottoms of all water bodies of every nature and description as to which title is vested in the State of Louisiana, together with all islands arising therein and other lands formed by accretion or by reliction, where allowed by law, excepting tax adjudicated lands, and not presently under mineral lease on March 12, 2008, situated in St. Bernard Parish, Louisiana, and more particularly described as follows: Beginning on the Southwest corner of Block 23, Chandeleur Sound Area Addition having Coordinates of X = 2,620,600.00 and Y = 499,330.00; thence West 7,859.00 feet to a point on the East boundary of State Lease No. 19062 having Coordinates of X = 2,612,741.00 and Y = 499,330.00; thence North, along the East boundary of State Lease No. 19062, 1,004.00 feet to the Northeast corner of State Lease No. 19062 having Coordinates of X = 2,612,741.00 and Y = 500,334.00; thence West, along the North boundary of State Lease No. 19062, 13.00 feet to the Southeast corner of State Lease No. 19060 having Coordinates of X = 2,612,728.00 and Y = 500,334.00; thence North, along the East boundary of State Lease No. 19060, 2,320.00 feet to the Northeast corner of State Lease No. 19060 having Coordinates of X = 2,612,728.00 and Y = 502,654.00; thence South 87 degrees 14 minutes 51 seconds West, along the North boundary of State Lease No. 19060, 3,831.42 feet to the Northwest corner of State Lease No. 19060 having Coordinates of X = 2,608,901.00 and Y = 502,470.00; thence South, along the West boundary of State Lease No. 19060, 2,136.00 feet to the Southwest corner of State Lease No. 19060, also being the Northwest corner of State Lease No. 19062 having Coordinates of X = 2,608,901.00 and Y = 500,334.00; thence South, along the West boundary of State Lease No. 19062, 1,004.00 feet to a point having Coordinates of X = 2,608,901.00 and Y = 499,330.00; thence West 1,651.00 feet to a point having Coordinates of X = 2,607,250.00 and Y = 499,330.00; thence North 7,375.00 feet to a point having Coordinates of X = 2,607,250.00 and Y = 506,705.00; thence East 7,288.00 feet to a point on the West boundary of State Lease No. 19059 having Coordinates of X = 2,614,538.00 and Y = 506,705.00; thence South, along the West boundary of State Lease No. 19059, 1,711.00 feet to the Southwest corner of State Lease No. 19059 having Coordinates of X = 2,614,538.00 and Y = 504,994.00; thence East, along the South boundary of State Lease No. 19059 and State Lease No. 19390, 5,514.00 feet to the Southeast corner of State Lease No. 19390 and State Lease No. 19059 having Coordinates of X = 2,620,052.00 and Y = 504,994.00; thence North, along the East boundary of State Lease No. 19390 and State Lease No. 19059, 1,711.00 feet to a point having Coordinates of X = 2,620,052.00 and Y = 506,705.00; thence East 548.00 feet to a point on the West line of Block 23, Chandeleur Sound Area Addition, having Coordinates of X = 2,620,600.00 and Y = 506,705.00; thence South, along the West line of Block 23, Chandeleur Sound Area Addition, 7,375.00 feet to the point of beginning, containing approximately **1241 acres**, all as more particularly outlined on a plat on file in the Office of Mineral Resources, Department of Natural Resources. All bearings, distances and coordinates are based on Louisiana Coordinate System of 1927, (North or South Zone), where applicable.

NOTE: The above description of the Tract nominated for lease has been provided and corrected, where required, exclusively by the nomination party. Any mineral lease selected from this Tract and awarded by the Louisiana State Mineral Board shall be without warranty of any kind, either express, implied, or statutory, including, but not limited to, the implied warranties of merchantability and fitness for a particular purpose. Should the mineral lease awarded by the Louisiana State Mineral Board be subsequently modified, cancelled or abrogated due to the existence of conflicting leases, operating agreements, private claims or other future obligations or conditions which may affect all or any portion of the leased Tract, it shall not relieve the Lessee of the obligation to pay any bonus due thereon to the Louisiana State Mineral Board, nor shall the Louisiana State Mineral Board be obligated to refund any consideration paid by the Lessor prior to such modification, cancellation, or abrogation, including, but not limited to, bonuses, rentals and royalties.

NOTE: The Office of Mineral Resources will require a minimum bonus of \$230 per acre and a minimum royalty of 23%.

NOTE: The State of Louisiana does hereby reserve, and this lease shall be subject to, the imprescriptible right of surface use in the nature of a servitude in favor of the Department of Natural Resources, including its Offices and Commissions, for the sole purpose of implementing, constructing, servicing and maintaining approved coastal zone management and/or restoration projects. Utilization of any and all rights derived under this lease by the mineral lessee, its agents, successors or assigns, shall not interfere with nor hinder the reasonable surface use by the Department of Natural Resources, its Offices or Commissions, as herein above reserved.

NOTE: The Department of Wildlife and Fisheries has designated certain areas in the coastal waters of the State of Louisiana as Oyster Seed Bed Areas. The exact location of those Seed Bed Areas must be obtained from the Department of Wildlife and Fisheries and any work done under a mineral lease from the State of Louisiana may necessarily be conducted in conformity with the rules and regulations promulgated by the said Department of Wildlife and Fisheries for Oyster Seed Bed Areas.

Applicant: CYPRESS ENERGY CORPORATION

Bidder	Cash Payment	Price/Acre	Rental	Oil	Gas	Other

**Legend**  
08030086  
Blocks  
Active\_Leases  
**DOQQ2004**

THREE MILE BAY

CX0023

CX0046

P.O.B.

SL 19390

SL 19059

ST BERNARD PARISH

SL 19060

SL 19062

NINEMILE BAY

0 2,000 Feet

**TRACT 39663 - Portion of Block 23, Chandeleur Sound Addition Area, Revised, St. Bernard Parish, Louisiana**

All of the lands now or formerly constituting the beds and bottoms of all water bodies of every nature and description as to which title is vested in the State of Louisiana, together with all islands arising therein and other lands formed by accretion or by reliction, where allowed by law, excepting tax adjudicated lands, and not presently under mineral lease on March 12, 2008, situated in St. Bernard Parish, Louisiana, and more particularly described as follows: Beginning at the Southwest Corner of Block 23, Chandeleur Sound Area Addition, having Coordinates of X = 2,620,600.00 and Y = 499,330.00; thence North 7,375.00 feet along the West line of said Block 23 to a point having Coordinates of X = 2,620,600.00 and Y = 506,705.00; thence East 9,355.00 feet to a point having Coordinates of X = 2,629,955.00 and Y = 506,705.00; thence South 1,399.00 feet to the Northwest Corner of State Lease No. 19061, having Coordinates of X = 2,629,955.00 and Y = 505,306.00; thence South 2,839.00 feet along the West line of said State Lease No. 19061 to its Southwest Corner, having Coordinates of X = 2,629,955.00 and Y = 502,467.00; thence East 4,547.00 feet along the South line of said State Lease No. 19061 to its Southeast Corner, having Coordinates of X = 2,634,502.00 and Y = 502,467.00; thence North 2,839.00 feet along the East line of said State Lease No. 19061 to its Northeast Corner, having Coordinates of X = 2,634,502.00 and Y = 505,306.00; thence East 848.00 feet to a point on the East line of said Block 23, having Coordinates of X = 2,635,350.00 and Y = 505,306.00; thence South 5,976.00 feet along said East line of Block 23 to its Southeast Corner, having Coordinates of X = 2,635,350.00 and Y = 499,330.00; thence West 14,750.00 feet along the South line of said Block 23 to the point of beginning, containing approximately **2,027.66 acres**, all as more particularly outlined on a plat on file in the Office of Mineral Resources, Department of Natural Resources. All bearings, distances and coordinates are based on Louisiana Coordinate System of 1927, (North or South Zone), where applicable.

NOTE: The above description of the Tract nominated for lease has been provided and corrected, where required, exclusively by the nomination party. Any mineral lease selected from this Tract and awarded by the Louisiana State Mineral Board shall be without warranty of any kind, either express, implied, or statutory, including, but not limited to, the implied warranties of merchantability and fitness for a particular purpose. Should the mineral lease awarded by the Louisiana State Mineral Board be subsequently modified, cancelled or abrogated due to the existence of conflicting leases, operating agreements, private claims or other future obligations or conditions which may affect all or any portion of the leased Tract, it shall not relieve the Lessee of the obligation to pay any bonus due thereon to the Louisiana State Mineral Board, nor shall the Louisiana State Mineral Board be obligated to refund any consideration paid by the Lessor prior to such modification, cancellation, or abrogation, including, but not limited to, bonuses, rentals and royalties.



NOTE: The Office of Mineral Resources will require a minimum bonus of \$230 per acre and a minimum royalty of 23%.

NOTE: The State of Louisiana does hereby reserve, and this lease shall be subject to, the imprescriptible right of surface use in the nature of a servitude in favor of the Department of Natural Resources, including its Offices and Commissions, for the sole purpose of implementing, constructing, servicing and maintaining approved coastal zone management and/or restoration projects. Utilization of any and all rights derived under this lease by the mineral lessee, its agents, successors or assigns, shall not interfere with nor hinder the reasonable surface use by the Department of Natural Resources, its Offices or Commissions, as herein above reserved.

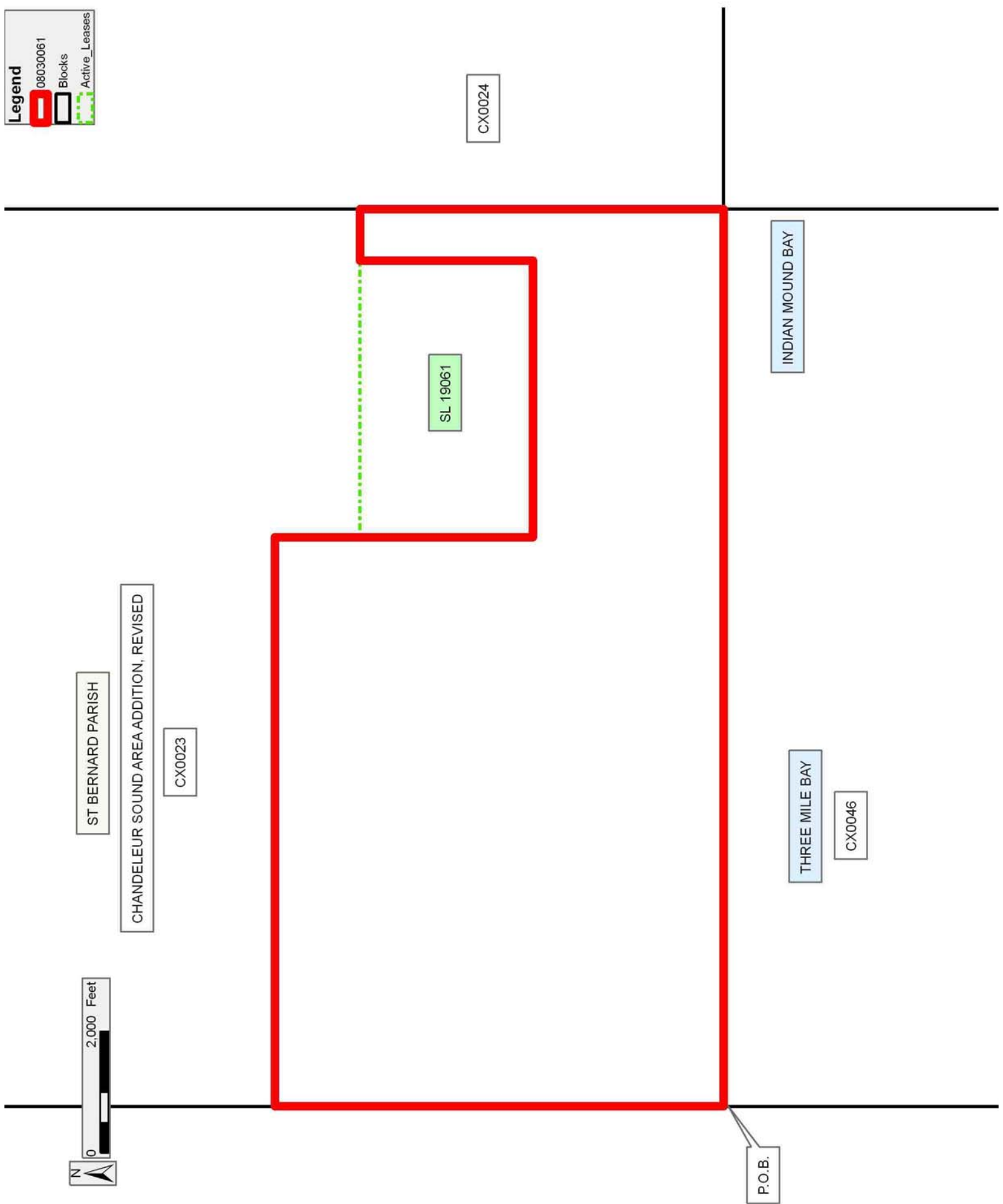
NOTE: The Department of Wildlife and Fisheries has designated certain areas in the coastal waters of the State of Louisiana as Oyster Seed Bed Areas. The exact location of those Seed Bed Areas must be obtained from the Department of Wildlife and Fisheries and any work done under a mineral lease from the State of Louisiana may necessarily be conducted in conformity with the rules and regulations promulgated by the said Department of Wildlife and Fisheries for Oyster Seed Bed Areas.

Applicant: CYPRESS ENERGY CORPORATION

Bidder	Cash Payment	Price/Acre	Rental	Oil	Gas	Other

**Legend**

- 08030061
- Blocks
- Active\_Leases



**TRACT 39664 - St. Bernard Parish, Louisiana**

All of the lands now or formerly constituting the beds and bottoms of all water bodies of every nature and description as to which title is vested in the State of Louisiana, together with all islands arising therein and other lands formed by accretion or by reliction, where allowed by law, excepting tax adjudicated lands, and not presently under mineral lease on March 12, 2008, situated in St. Bernard Parish, Louisiana, and more particularly described as follows: Beginning at a point having Coordinates of X = 2,598,250.00 and Y = 499,330.00; thence West 9,000.00 feet to a point having Coordinates of X = 2,589,250.00 and Y = 499,330.00; thence North 7,375.00 feet to a point having Coordinates of X = 2,589,250.00 and Y = 506,705.00; thence East 9,000.00 feet to a point having Coordinates of X = 2,598,250.00 and Y = 506,705.00; thence South 7,375.00 feet to the point of beginning, containing approximately **412 acres**, all as more particularly outlined on a plat on file in the Office of Mineral Resources, Department of Natural Resources. All bearings, distances and coordinates are based on Louisiana Coordinate System of 1927, (North or South Zone), where applicable.

NOTE: The above description of the Tract nominated for lease has been provided and corrected, where required, exclusively by the nomination party. Any mineral lease selected from this Tract and awarded by the Louisiana State Mineral Board shall be without warranty of any kind, either express, implied, or statutory, including, but not limited to, the implied warranties of merchantability and fitness for a particular purpose. Should the mineral lease awarded by the Louisiana State Mineral Board be subsequently modified, cancelled or abrogated due to the existence of conflicting leases, operating agreements, private claims or other future obligations or conditions which may affect all or any portion of the leased Tract, it shall not relieve the Lessee of the obligation to pay any bonus due thereon to the Louisiana State Mineral Board, nor shall the Louisiana State Mineral Board be obligated to refund any consideration paid by the Lessor prior to such modification, cancellation, or abrogation, including, but not limited to, bonuses, rentals and royalties.

NOTE: The Office of Mineral Resources will require a minimum bonus of \$230 per acre and a minimum royalty of 23%.

NOTE: The State of Louisiana does hereby reserve, and this lease shall be subject to, the imprescriptible right of surface use in the nature of a servitude in favor of the Department of Natural Resources, including its Offices and Commissions, for the sole purpose of implementing, constructing, servicing and maintaining approved coastal zone management and/or restoration projects. Utilization of any and all rights derived under this lease by the mineral lessee, its agents, successors or assigns, shall not interfere with nor hinder the reasonable surface use by the Department of Natural Resources, its Offices or Commissions, as herein above reserved.

NOTE: The Department of Wildlife and Fisheries has designated certain areas in the coastal waters of the State of Louisiana as Oyster Seed Bed Areas. The exact location of those Seed Bed Areas must be obtained from the Department of Wildlife and Fisheries and any work done under a mineral lease from the State of Louisiana may necessarily be conducted in conformity with the rules and regulations promulgated by the said Department of Wildlife and Fisheries for Oyster Seed Bed Areas.

Applicant: CYPRESS ENERGY CORPORATION

Bidder	Cash Payment	Price/Acre	Rental	Oil	Gas	Other



**TRACT 39665 - St. Bernard Parish, Louisiana**

All of the lands now or formerly constituting the beds and bottoms of all water bodies of every nature and description as to which title is vested in the State of Louisiana, together with all islands arising therein and other lands formed by accretion or by reliction, where allowed by law, excepting tax adjudicated lands, and not presently under mineral lease on March 12, 2008, situated in St. Bernard Parish, Louisiana, and more particularly described as follows: Beginning at a point on the Northwest corner of Block 46, Chandeleur Sound Area Addition having Coordinates of X = 2,620,600.00 and Y = 499,330.00; thence South, along the West line of Block 46, Chandeleur Sound Area Addition, 7,375.00 feet to a point having Coordinates of X = 2,620,600.00 and Y = 491,955.00; thence West 13,350.00 feet to a point having Coordinates of X = 2,607,250.00 and Y = 491,955.00; thence North 7,375.00 feet to a point having Coordinates of X = 2,607,250.00 and Y = 499,330.00; thence East 1,651.00 feet to a point on the West boundary of State Lease No. 19062 having Coordinates of X = 2,608,901.00 and Y = 499,330.00; thence South, along the West boundary of State Lease No. 19062, 1,008.00 feet to the Southwest corner of State Lease No. 19062 having Coordinates of X = 2,608,901.00 and Y = 498,322.00; thence East, along the South boundary of State Lease No. 19062, 3,840.00 feet to the Southeast corner of State Lease No. 19062 having Coordinates of X = 2,612,741.00 and Y = 498,322.00; thence North, along the East boundary of State Lease No. 19062, 1,008.00 feet to a point having Coordinates of X = 2,612,741.00 and Y = 499,330.00; thence East 7,859.00 feet to the point of beginning, (This tract includes only waterbottoms claimed and owned by the state and specifically excludes any land which the state may claim or own and to which the mineral rights are vested in the state), containing approximately **1809 acres**, all as more particularly outlined on a plat on file in the Office of Mineral Resources, Department of Natural Resources. All bearings, distances and coordinates are based on Louisiana Coordinate System of 1927, (North or South Zone), where applicable.

NOTE: The above description of the Tract nominated for lease has been provided and corrected, where required, exclusively by the nomination party. Any mineral lease selected from this Tract and awarded by the Louisiana State Mineral Board shall be without warranty of any kind, either express, implied, or statutory, including, but not limited to, the implied warranties of merchantability and fitness for a particular purpose. Should the mineral lease awarded by the Louisiana State Mineral Board be subsequently modified, cancelled or abrogated due to the existence of conflicting leases, operating agreements, private claims or other future obligations or conditions which may affect all or any portion of the leased Tract, it shall not relieve the Lessee of the obligation to pay any bonus due thereon to the Louisiana State Mineral Board, nor shall the Louisiana State Mineral Board be obligated to refund any consideration paid by the Lessor prior to such modification, cancellation, or abrogation, including, but not limited to, bonuses, rentals and royalties.

NOTE: The Office of Mineral Resources will require a minimum bonus of \$230 per acre and a minimum royalty of 23%.

NOTE: The State of Louisiana does hereby reserve, and this lease shall be subject to, the imprescriptible right of surface use in the nature of a servitude in favor of the Department of Natural Resources, including its Offices and Commissions, for the sole purpose of implementing, constructing, servicing and maintaining approved coastal zone management and/or restoration projects. Utilization of any and all rights derived under this lease by the mineral lessee, its agents, successors or assigns, shall not interfere with nor hinder the reasonable surface use by the Department of Natural Resources, its Offices or Commissions, as herein above reserved.

NOTE: The Department of Wildlife and Fisheries has designated certain areas in the coastal waters of the State of Louisiana as Oyster Seed Bed Areas. The exact location of those Seed Bed Areas must be obtained from the Department of Wildlife and Fisheries and any work done under a mineral lease from the State of Louisiana may necessarily be conducted in conformity with the rules and regulations promulgated by the said Department of Wildlife and Fisheries for Oyster Seed Bed Areas.

Applicant: CYPRESS ENERGY CORPORATION

Bidder	Cash Payment	Price/Acre	Rental	Oil	Gas	Other

**Legend**  
08030087  
Active\_Leases  
DOQQ2004

CHANDELEUR SOUND AREA ADDITION, REVISED

P.O.B.

ST BERNARD PARISH

NINEMILE BAY

SL 19062

BAY BOUDREAU

FALSE MOUTH BAY



T12S - R18E



**TRACT 39666 - Portion of Block 46, Chandeleur Sound Addition Area, Revised, St. Bernard Parish, Louisiana**

All of the lands now or formerly constituting the beds and bottoms of all water bodies of every nature and description as to which title is vested in the State of Louisiana, together with all islands arising therein and other lands formed by accretion or by reliction, where allowed by law, excepting tax adjudicated lands, and not presently under mineral lease on March 12, 2008, situated in St. Bernard Parish, Louisiana, and more particularly described as follows: Beginning at the Northwest Corner of Block 46, Chandeleur Sound Area Addition, having Coordinates of X = 2,620,600.00 and Y = 499,330.00; thence East 14,750.00 feet along the North line of said Block 46 to its Northeast Corner, having Coordinates of X = 2,635,350.00 and Y = 499,330.00; thence South 7,375.00 feet along the East line of said Block 46 to a point having Coordinates of X = 2,635,350.00 and Y = 491,955.00; thence West 14,750.00 feet to a point on the West line of said Block 46, having Coordinates of X = 2,620,600.00 and Y = 491,955.00; thence North 7,375.00 feet along the West line of said Block 46 to the point of beginning, containing approximately **2,419 acres**, all as more particularly outlined on a plat on file in the Office of Mineral Resources, Department of Natural Resources. All bearings, distances and coordinates are based on Louisiana Coordinate System of 1927, (North or South Zone), where applicable.

NOTE: The above description of the Tract nominated for lease has been provided and corrected, where required, exclusively by the nomination party. Any mineral lease selected from this Tract and awarded by the Louisiana State Mineral Board shall be without warranty of any kind, either express, implied, or statutory, including, but not limited to, the implied warranties of merchantability and fitness for a particular purpose. Should the mineral lease awarded by the Louisiana State Mineral Board be subsequently modified, cancelled or abrogated due to the existence of conflicting leases, operating agreements, private claims or other future obligations or conditions which may affect all or any portion of the leased Tract, it shall not relieve the Lessee of the obligation to pay any bonus due thereon to the Louisiana State Mineral Board, nor shall the Louisiana State Mineral Board be obligated to refund any consideration paid by the Lessor prior to such modification, cancellation, or abrogation, including, but not limited to, bonuses, rentals and royalties.

NOTE: The Office of Mineral Resources will require a minimum bonus of \$230 per acre and a minimum royalty of 23%.

NOTE: The State of Louisiana does hereby reserve, and this lease shall be subject to, the imprescriptible right of surface use in the nature of a servitude in favor of the Department of Natural Resources, including its Offices and Commissions, for the sole purpose of implementing, constructing, servicing and maintaining approved coastal zone management and/or restoration projects. Utilization of any and all rights derived under this lease by the mineral lessee, its agents, successors or assigns,

shall not interfere with nor hinder the reasonable surface use by the Department of Natural Resources, its Offices or Commissions, as herein above reserved.

NOTE: The Department of Wildlife and Fisheries has designated certain areas in the coastal waters of the State of Louisiana as Oyster Seed Bed Areas. The exact location of those Seed Bed Areas must be obtained from the Department of Wildlife and Fisheries and any work done under a mineral lease from the State of Louisiana may necessarily be conducted in conformity with the rules and regulations promulgated by the said Department of Wildlife and Fisheries for Oyster Seed Bed Areas.

Applicant: CYPRESS ENERGY CORPORATION

Bidder	Cash Payment	Price/Acre	Rental	Oil	Gas	Other

Legend  
08030062  
Blocks  
DOQQ2004

ST BERNARD PARISH

THREE MILE BAY

CX0023

INDIAN MOUND BAY

CHANDELEUR SOUND AREA ADDITION, REVISED

CX0046

0 2,000 Feet

P.O.B.

T12S - R18E

**TRACT 39667 - Portion of Block 45, Chandeleur Sound Addition Area, Revised, St. Bernard Parish, Louisiana**

All of the lands now or formerly constituting the beds and bottoms of all water bodies of every nature and description as to which title is vested in the State of Louisiana, together with all islands arising therein and other lands formed by accretion or by reliction, where allowed by law, excepting tax adjudicated lands, and not presently under mineral lease on March 12, 2008, situated in St. Bernard Parish, Louisiana, and more particularly described as follows: Beginning at the Northwest Corner of Block 45, Chandeleur Sound Area Addition, having Coordinates of X = 2,635,350.00 and Y = 499,330.00; thence East 14,750.00 feet along the North line of said Block 45 to its Northeast Corner, having Coordinates of X = 2,650,100.00 and Y = 499,330.00; thence South 7,375.00 feet along the East line of said Block 45 to a point having Coordinates of X = 2,650,100.00 and Y = 491,955.00; thence West 14,750.00 feet to a point on the West line of said Block 45, having Coordinates of X = 2,635,350.00 and Y = 491,955.00; thence North 7,375.00 feet along the West line of said Block 45 to the point of beginning, (This tract includes only waterbottoms claimed and owned by the state and specifically excludes any land which the state may claim or own and to which the mineral rights are vested in the state), containing approximately **2,489 acres**, all as more particularly outlined on a plat on file in the Office of Mineral Resources, Department of Natural Resources. All bearings, distances and coordinates are based on Louisiana Coordinate System of 1927, (North or South Zone), where applicable.

NOTE: The above description of the Tract nominated for lease has been provided and corrected, where required, exclusively by the nomination party. Any mineral lease selected from this Tract and awarded by the Louisiana State Mineral Board shall be without warranty of any kind, either express, implied, or statutory, including, but not limited to, the implied warranties of merchantability and fitness for a particular purpose. Should the mineral lease awarded by the Louisiana State Mineral Board be subsequently modified, cancelled or abrogated due to the existence of conflicting leases, operating agreements, private claims or other future obligations or conditions which may affect all or any portion of the leased Tract, it shall not relieve the Lessee of the obligation to pay any bonus due thereon to the Louisiana State Mineral Board, nor shall the Louisiana State Mineral Board be obligated to refund any consideration paid by the Lessor prior to such modification, cancellation, or abrogation, including, but not limited to, bonuses, rentals and royalties.

NOTE: The Office of Mineral Resources will require a minimum bonus of \$230 per acre and a minimum royalty of 23%.

NOTE: The State of Louisiana does hereby reserve, and this lease shall be subject to, the imprescriptible right of surface use in the nature of a servitude in favor of the Department of Natural Resources, including its Offices and Commissions, for the sole purpose of implementing,

constructing, servicing and maintaining approved coastal zone management and/or restoration projects. Utilization of any and all rights derived under this lease by the mineral lessee, its agents, successors or assigns, shall not interfere with nor hinder the reasonable surface use by the Department of Natural Resources, its Offices or Commissions, as herein above reserved.

NOTE: The Department of Wildlife and Fisheries has designated certain areas in the coastal waters of the State of Louisiana as Oyster Seed Bed Areas. The exact location of those Seed Bed Areas must be obtained from the Department of Wildlife and Fisheries and any work done under a mineral lease from the State of Louisiana may necessarily be conducted in conformity with the rules and regulations promulgated by the said Department of Wildlife and Fisheries for Oyster Seed Bed Areas.

Applicant: CYPRESS ENERGY CORPORATION

Bidder	Cash Payment	Price/Acre	Rental	Oil	Gas	Other

Legend  
08030064  
Blocks  
DOQQ2004



ST BERNARD PARISH

CX0024

INDIAN MOUND BAY

P.O.B.



T12S - R19E

CX0045

CHANDELEUR SOUND AREA ADDITION, REVISED

**TRACT 39668 - St. Bernard Parish, Louisiana**

All of the lands now or formerly constituting the beds and bottoms of all water bodies of every nature and description as to which title is vested in the State of Louisiana, together with all islands arising therein and other lands formed by accretion or by reliction, where allowed by law, excepting tax adjudicated lands, and not presently under mineral lease on March 12, 2008, situated in St. Bernard Parish, Louisiana, and more particularly described as follows: Beginning at a point having Coordinates of X = 2,598,250.00 and Y = 499,330.00; thence South 7,375.00 feet to a point having Coordinates of X = 2,598,250.00 and Y = 491,955.00; thence West 9,000.00 feet to a point having Coordinates of X = 2,589,250.00 and Y = 491,955.00; thence North 7,375.00 feet to a point having Coordinates of X = 2,589,250.00 and Y = 499,330.00; thence East 9,000.00 feet to the point of beginning, containing approximately **561 acres**, all as more particularly outlined on a plat on file in the Office of Mineral Resources, Department of Natural Resources. All bearings, distances and coordinates are based on Louisiana Coordinate System of 1927, (North or South Zone), where applicable.

NOTE: The above description of the Tract nominated for lease has been provided and corrected, where required, exclusively by the nomination party. Any mineral lease selected from this Tract and awarded by the Louisiana State Mineral Board shall be without warranty of any kind, either express, implied, or statutory, including, but not limited to, the implied warranties of merchantability and fitness for a particular purpose. Should the mineral lease awarded by the Louisiana State Mineral Board be subsequently modified, cancelled or abrogated due to the existence of conflicting leases, operating agreements, private claims or other future obligations or conditions which may affect all or any portion of the leased Tract, it shall not relieve the Lessee of the obligation to pay any bonus due thereon to the Louisiana State Mineral Board, nor shall the Louisiana State Mineral Board be obligated to refund any consideration paid by the Lessor prior to such modification, cancellation, or abrogation, including, but not limited to, bonuses, rentals and royalties.

NOTE: The Office of Mineral Resources will require a minimum bonus of \$230 per acre and a minimum royalty of 23%.

NOTE: The State of Louisiana does hereby reserve, and this lease shall be subject to, the imprescriptible right of surface use in the nature of a servitude in favor of the Department of Natural Resources, including its Offices and Commissions, for the sole purpose of implementing, constructing, servicing and maintaining approved coastal zone management and/or restoration projects. Utilization of any and all rights derived under this lease by the mineral lessee, its agents, successors or assigns, shall not interfere with nor hinder the reasonable surface use by the Department of Natural Resources, its Offices or Commissions, as herein above reserved.

NOTE: The Department of Wildlife and Fisheries has designated certain areas in the coastal waters of the State of Louisiana as Oyster Seed Bed Areas. The exact location of those Seed Bed Areas must be obtained from the Department of Wildlife and Fisheries and any work done under a mineral lease from the State of Louisiana may necessarily be conducted in conformity with the rules and regulations promulgated by the said Department of Wildlife and Fisheries for Oyster Seed Bed Areas.

Applicant: CYPRESS ENERGY CORPORATION

Bidder	Cash Payment	Price/Acre	Rental	Oil	Gas	Other



T12S - R18E

P.O.B.

ST BERNARD PARISH

T12S - R17E

FALSE MOUTH BAY

LAGOON

WHISKEY BAYOU

2,000 Feet

N

**TRACT 39669 - St. Bernard Parish, Louisiana**

All of the lands now or formerly constituting the beds and bottoms of all water bodies of every nature and description as to which title is vested in the State of Louisiana, together with all islands arising therein and other lands formed by accretion or by reliction, where allowed by law, excepting tax adjudicated lands, and not presently under mineral lease on March 12, 2008, situated in St. Bernard Parish, Louisiana, and more particularly described as follows: Beginning at a point having Coordinates of X = 2,598,250.00 and Y = 499,330.00; thence East 9,000.00 feet to a point having Coordinates of X = 2,607,250.00 and Y = 499,330.00; thence South 7,375.00 feet to a point having Coordinates of X = 2,607,250.00 and Y = 491,955.00; thence West 9,000.00 feet to a point having Coordinates of X = 2,598,250.00 and Y = 491,955.00; thence North 7,375.00 feet to the point of beginning, **LESS AND EXCEPT** all that portion of State Lease No. 19064 which lies entirely within the above described tract, being more fully described as follows: Commencing at a point being the point of beginning of the above described nominated tract having coordinates of X = 2,598,250.00 and Y = 499,330.00; thence South 33 degrees 26 minutes 38 seconds East 1549.57 feet to a point being the point of beginning of said State Lease No. 19064 having Coordinates of X = 2,599,104.00 and Y = 498,037.00; thence East 6,269.00 feet to a point having Coordinates of X = 2,605,373.00 and Y = 498,037.00; thence South 1,373.00 feet to a point having Coordinates X = 2,605,373.00 and Y = 496,664.00; thence West 6,269.00 feet to a point having Coordinates of X = 2,599,104.00 and Y = 496,664.00; thence North 1,373.00 feet to the point of beginning of said State Lease No. 19064, the nominated tract containing approximately **1240 acres**, all as more particularly outlined on a plat on file in the Office of Mineral Resources, Department of Natural Resources. All bearings, distances and coordinates are based on Louisiana Coordinate System of 1927, (North or South Zone), where applicable.

NOTE: The above description of the Tract nominated for lease has been provided and corrected, where required, exclusively by the nomination party. Any mineral lease selected from this Tract and awarded by the Louisiana State Mineral Board shall be without warranty of any kind, either express, implied, or statutory, including, but not limited to, the implied warranties of merchantability and fitness for a particular purpose. Should the mineral lease awarded by the Louisiana State Mineral Board be subsequently modified, cancelled or abrogated due to the existence of conflicting leases, operating agreements, private claims or other future obligations or conditions which may affect all or any portion of the leased Tract, it shall not relieve the Lessee of the obligation to pay any bonus due thereon to the Louisiana State Mineral Board, nor shall the Louisiana State Mineral Board be obligated to refund any consideration paid by the Lessor prior to such modification, cancellation, or abrogation, including, but not limited to, bonuses, rentals and royalties.

NOTE: The Office of Mineral Resources will require a minimum bonus of \$230 per acre and a minimum royalty of 23%.

NOTE: The State of Louisiana does hereby reserve, and this lease shall be subject to, the imprescriptible right of surface use in the nature of a servitude in favor of the Department of Natural Resources, including its Offices and Commissions, for the sole purpose of implementing, constructing, servicing and maintaining approved coastal zone management and/or restoration projects. Utilization of any and all rights derived under this lease by the mineral lessee, its agents, successors or assigns, shall not interfere with nor hinder the reasonable surface use by the Department of Natural Resources, its Offices or Commissions, as herein above reserved.

Applicant: CYPRESS ENERGY CORPORATION

Bidder	Cash Payment	Price/Acre	Rental	Oil	Gas	Other

**Legend**

- 08030088
- Wildlife
- Active\_Leases
- Counties

**DOQQ2004**



**TRACT 39670 - St. Bernard Parish, Louisiana**

All of the lands now or formerly constituting the beds and bottoms of all water bodies of every nature and description as to which title is vested in the State of Louisiana, together with all islands arising therein and other lands formed by accretion or by reliction, where allowed by law, excepting tax adjudicated lands, and not presently under mineral lease on March 12, 2008, situated in St. Bernard Parish, Louisiana, and more particularly described as follows: Beginning at the Southwest corner of Block 46, Chandeleur Sound Area Addition, having Coordinates of X = 2,620,600.00 and Y = 484,580.00; thence West 13,350.00 feet to a point having Coordinates of X = 2,607,250.00 and Y = 484,580.00; thence North 7,375.00 feet to a point having Coordinates of X = 2,607,250.00 and Y = 491,955.00; thence East 13,350.00 feet to a point on the West line of Block 46, Chandeleur Sound Area Addition having Coordinates of X = 2,620,600.00 and Y = 491,955.00; thence South, along the West line of Block 46, Chandeleur Sound Area Addition, 7,375.00 feet to the point of beginning, (This tract includes only waterbottoms claimed and owned by the state and specifically excludes any land which the state may claim or own and to which the mineral rights are vested in the state), containing approximately **2224 acres**, all as more particularly outlined on a plat on file in the Office of Mineral Resources, Department of Natural Resources. All bearings, distances and coordinates are based on Louisiana Coordinate System of 1927, (North or South Zone), where applicable.

NOTE: The above description of the Tract nominated for lease has been provided and corrected, where required, exclusively by the nomination party. Any mineral lease selected from this Tract and awarded by the Louisiana State Mineral Board shall be without warranty of any kind, either express, implied, or statutory, including, but not limited to, the implied warranties of merchantability and fitness for a particular purpose. Should the mineral lease awarded by the Louisiana State Mineral Board be subsequently modified, cancelled or abrogated due to the existence of conflicting leases, operating agreements, private claims or other future obligations or conditions which may affect all or any portion of the leased Tract, it shall not relieve the Lessee of the obligation to pay any bonus due thereon to the Louisiana State Mineral Board, nor shall the Louisiana State Mineral Board be obligated to refund any consideration paid by the Lessor prior to such modification, cancellation, or abrogation, including, but not limited to, bonuses, rentals and royalties.

NOTE: The Office of Mineral Resources will require a minimum bonus of \$230 per acre and a minimum royalty of 23%.

NOTE: The State of Louisiana does hereby reserve, and this lease shall be subject to, the imprescriptible right of surface use in the nature of a servitude in favor of the Department of Natural Resources, including its Offices and Commissions, for the sole purpose of implementing, constructing, servicing and maintaining approved coastal zone management and/or restoration projects. Utilization of any and all rights derived

under this lease by the mineral lessee, its agents, successors or assigns, shall not interfere with nor hinder the reasonable surface use by the Department of Natural Resources, its Offices or Commissions, as herein above reserved.

NOTE: The Department of Wildlife and Fisheries has designated certain areas in the coastal waters of the State of Louisiana as Oyster Seed Bed Areas. The exact location of those Seed Bed Areas must be obtained from the Department of Wildlife and Fisheries and any work done under a mineral lease from the State of Louisiana may necessarily be conducted in conformity with the rules and regulations promulgated by the said Department of Wildlife and Fisheries for Oyster Seed Bed Areas.

Applicant: CYPRESS ENERGY CORPORATION

Bidder	Cash Payment	Price/Acre	Rental	Oil	Gas	Other

Legenda

08030090  
DOQQ2004



ST BERNARD PARISH

T12S - R18E

SEC 16

SEC 15

FALSE MOUTH BAY

BAY BOUDREAU

P.O.B.

CHANDELEUR SOUND AREA ADDITION, REVISED

