

TRACT 39651 - Portion of Block 20, North Lake Borgne Area, St. Bernard Parish, Louisiana

All of the lands now or formerly constituting the beds and bottoms of all water bodies of every nature and description as to which title is vested in the State of Louisiana, together with all islands arising therein and other lands formed by accretion or by reliction, where allowed by law, excepting tax adjudicated lands, and not presently under mineral lease on March 12, 2008, situated in St. Bernard Parish, Louisiana, and more particularly described as follows: Beginning at the Northwest Corner of Block 20, North Lake Borgne Area, having Coordinates of X = 2,625,250.00 and Y = 529,958.70; thence East 9,000.00 feet along the North line of said Block 20 to a point having Coordinates of X = 2,634,250.00 and Y = 529,958.70; thence South 9,000.00 feet to a point on the South line of said Block 20, having Coordinates of X = 2,634,250.00 and Y = 520,958.70; thence West 9,000.00 feet along said South line of Block 20 to its Southwest Corner, having Coordinates of X = 2,625,250.00 and Y = 520,958.70; thence North 9,000.00 feet along the West line of said Block 20 to the point of beginning, containing approximately **1,859.50 acres**, all as more particularly outlined on a plat on file in the Office of Mineral Resources, Department of Natural Resources. All bearings, distances and coordinates are based on Louisiana Coordinate System of 1927, (North or South Zone), where applicable.

NOTE: The above description of the Tract nominated for lease has been provided and corrected, where required, exclusively by the nomination party. Any mineral lease selected from this Tract and awarded by the Louisiana State Mineral Board shall be without warranty of any kind, either express, implied, or statutory, including, but not limited to, the implied warranties of merchantability and fitness for a particular purpose. Should the mineral lease awarded by the Louisiana State Mineral Board be subsequently modified, cancelled or abrogated due to the existence of conflicting leases, operating agreements, private claims or other future obligations or conditions which may affect all or any portion of the leased Tract, it shall not relieve the Lessee of the obligation to pay any bonus due thereon to the Louisiana State Mineral Board, nor shall the Louisiana State Mineral Board be obligated to refund any consideration paid by the Lessor prior to such modification, cancellation, or abrogation, including, but not limited to, bonuses, rentals and royalties.

NOTE: The Office of Mineral Resources will require a minimum bonus of \$230 per acre and a minimum royalty of 23%.

NOTE: The State of Louisiana does hereby reserve, and this lease shall be subject to, the imprescriptible right of surface use in the nature of a servitude in favor of the Department of Natural Resources, including its Offices and Commissions, for the sole purpose of implementing, constructing, servicing and maintaining approved coastal zone management and/or restoration projects. Utilization of any and all rights derived under this lease by the mineral lessee, its agents, successors or assigns, shall not interfere with nor hinder the reasonable surface use by the

Department of Natural Resources, its Offices or Commissions, as herein above reserved.

Applicant: CYPRESS ENERGY CORPORATION

Bidder	Cash Payment	Price/Acre	Rental	Oil	Gas	Other

ST BERNARD PARISH

LB0019

LB0020

CX0022



P.O.B.

LB0013

CHANDELEUR SOUND

NORTH LAKE BORGNE AREA

TRACT 39652 - Portion of Blocks 13, and 20, North Lake Borgne Area, and Block 22, Chandeleur Sound Addition Area, Revised, St. Bernard Parish, Louisiana

All of the lands now or formerly constituting the beds and bottoms of all water bodies of every nature and description as to which title is vested in the State of Louisiana, together with all islands arising therein and other lands formed by accretion or by reliction, where allowed by law, excepting tax adjudicated lands, and not presently under mineral lease on March 12, 2008, situated in St. Bernard Parish, Louisiana, and more particularly described as follows: Beginning at the Northeast Corner of Block 22, Chandeleur Sound Area Addition, having Coordinates of X = 2,635,350.00 and Y = 520,958.70; thence South 6,878.70 feet along the East line of said Block 22 to its Southeast Corner, having Coordinates of X = 2,635,350.00 and Y = 514,080.00; thence West 14,750.00 feet along the South line of said Block 22 to its Southwest Corner, having Coordinates of X = 2,620,600.00 and Y = 514,080.00; thence North 6,878.70 feet along the West line of said Block 22 to its Northwest Corner, having Coordinates of X = 2,620,600.00 and Y = 520,958.70; thence East 14,750.00 feet along the North line of said Block 22 to the point of beginning, containing approximately **2,329.22 acres**, all as more particularly outlined on a plat on file in the Office of Mineral Resources, Department of Natural Resources. All bearings, distances and coordinates are based on Louisiana Coordinate System of 1927, (North or South Zone), where applicable.

NOTE: The above description of the Tract nominated for lease has been provided and corrected, where required, exclusively by the nomination party. Any mineral lease selected from this Tract and awarded by the Louisiana State Mineral Board shall be without warranty of any kind, either express, implied, or statutory, including, but not limited to, the implied warranties of merchantability and fitness for a particular purpose. Should the mineral lease awarded by the Louisiana State Mineral Board be subsequently modified, cancelled or abrogated due to the existence of conflicting leases, operating agreements, private claims or other future obligations or conditions which may affect all or any portion of the leased Tract, it shall not relieve the Lessee of the obligation to pay any bonus due thereon to the Louisiana State Mineral Board, nor shall the Louisiana State Mineral Board be obligated to refund any consideration paid by the Lessor prior to such modification, cancellation, or abrogation, including, but not limited to, bonuses, rentals and royalties.

NOTE: The Office of Mineral Resources will require a minimum bonus of \$230 per acre and a minimum royalty of 23%.

NOTE: The State of Louisiana does hereby reserve, and this lease shall be subject to, the imprescriptible right of surface use in the nature of a servitude in favor of the Department of Natural Resources, including its Offices and Commissions, for the sole purpose of implementing, constructing, servicing and maintaining approved coastal zone management and/or restoration projects. Utilization of any and all rights derived

under this lease by the mineral lessee, its agents, successors or assigns, shall not interfere with nor hinder the reasonable surface use by the Department of Natural Resources, its Offices or Commissions, as herein above reserved.

NOTE: The Department of Wildlife and Fisheries has designated certain areas in the coastal waters of the State of Louisiana as Oyster Seed Bed Areas. The exact location of those Seed Bed Areas must be obtained from the Department of Wildlife and Fisheries and any work done under a mineral lease from the State of Louisiana may necessarily be conducted in conformity with the rules and regulations promulgated by the said Department of Wildlife and Fisheries for Oyster Seed Bed Areas.

Applicant: CYPRESS ENERGY CORPORATION

Bidder	Cash Payment	Price/Acre	Rental	Oil	Gas	Other

Legend

08030059

Blocks



ST BERNARD PARISH

CHANDELEUR SOUND

LB0020

LB0013

NORTH LAKE BORGNE AREA

P.O.B.

CX0021

CX0023

BRETON SOUND

CHANDELEUR SOUND AREA ADDITION, REVISED

TRACT 39653 - St. Bernard Parish, Louisiana

All of the lands now or formerly constituting the beds and bottoms of all water bodies of every nature and description as to which title is vested in the State of Louisiana, together with all islands arising therein and other lands formed by accretion or by reliction, where allowed by law, excepting tax adjudicated lands, and not presently under mineral lease on March 12, 2008, situated in St. Bernard Parish, Louisiana, and more particularly described as follows: Beginning at the Southwest Corner of Block 12, North Lake Borgne Area, having Coordinates of X = 2,589,250.00 and Y = 520,958.70; thence East, along the south boundary of Block 12 North Lake Borgne Area 9,000.00 feet to a point having Coordinates of X = 2,598,250.00 and Y = 520,958.70; thence South 6,878.70 feet to a point having Coordinates of X = 2,598,250.00 and Y = 514,080.00; thence West 9,000.00 feet to a point having Coordinates of X = 2,589,250.00 and Y = 514,080.00; thence North 6,878.70 feet to the point of beginning, containing approximately **1415 acres**, all as more particularly outlined on a plat on file in the Office of Mineral Resources, Department of Natural Resources. All bearings, distances and coordinates are based on Louisiana Coordinate System of 1927, (North or South Zone), where applicable.

NOTE: The above description of the Tract nominated for lease has been provided and corrected, where required, exclusively by the nomination party. Any mineral lease selected from this Tract and awarded by the Louisiana State Mineral Board shall be without warranty of any kind, either express, implied, or statutory, including, but not limited to, the implied warranties of merchantability and fitness for a particular purpose. Should the mineral lease awarded by the Louisiana State Mineral Board be subsequently modified, cancelled or abrogated due to the existence of conflicting leases, operating agreements, private claims or other future obligations or conditions which may affect all or any portion of the leased Tract, it shall not relieve the Lessee of the obligation to pay any bonus due thereon to the Louisiana State Mineral Board, nor shall the Louisiana State Mineral Board be obligated to refund any consideration paid by the Lessor prior to such modification, cancellation, or abrogation, including, but not limited to, bonuses, rentals and royalties.

NOTE: The Office of Mineral Resources will require a minimum bonus of \$230 per acre and a minimum royalty of 23%.

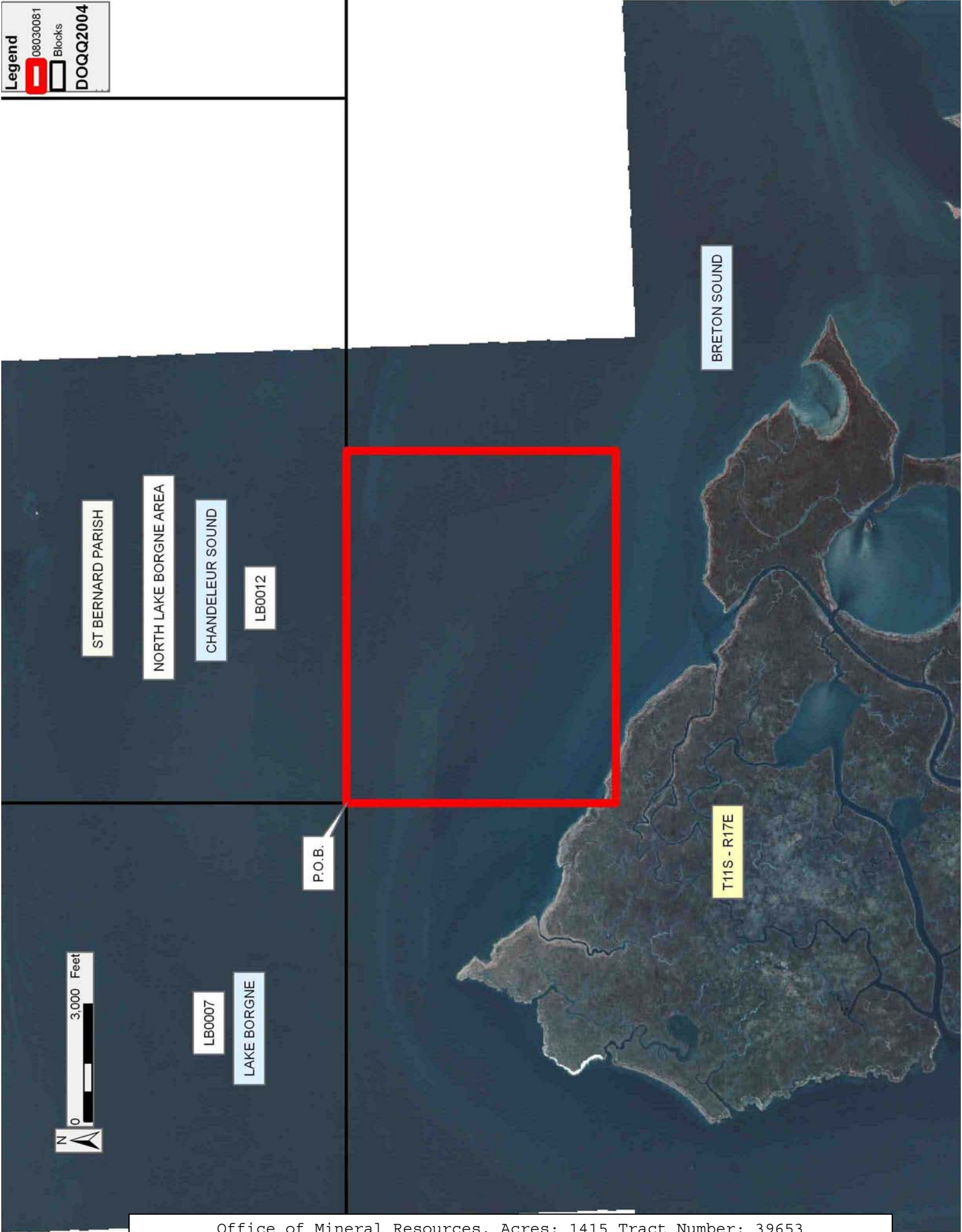
NOTE: The State of Louisiana does hereby reserve, and this lease shall be subject to, the imprescriptible right of surface use in the nature of a servitude in favor of the Department of Natural Resources, including its Offices and Commissions, for the sole purpose of implementing, constructing, servicing and maintaining approved coastal zone management and/or restoration projects. Utilization of any and all rights derived under this lease by the mineral lessee, its agents, successors or assigns, shall not interfere with nor hinder the reasonable surface use by the Department of Natural Resources, its Offices or Commissions, as herein above reserved.

NOTE: The Department of Wildlife and Fisheries has designated certain areas in the coastal waters of the State of Louisiana as Oyster Seed Bed Areas. The exact location of those Seed Bed Areas must be obtained from the Department of Wildlife and Fisheries and any work done under a mineral lease from the State of Louisiana may necessarily be conducted in conformity with the rules and regulations promulgated by the said Department of Wildlife and Fisheries for Oyster Seed Bed Areas.

Applicant: CYPRESS ENERGY CORPORATION

Bidder	Cash Payment	Price/Acre	Rental	Oil	Gas	Other

Legend
08030081
Blocks
DOQQ2004



TRACT 39654 - St. Bernard Parish, Louisiana

All of the lands now or formerly constituting the beds and bottoms of all water bodies of every nature and description as to which title is vested in the State of Louisiana, together with all islands arising therein and other lands formed by accretion or by reliction, where allowed by law, excepting tax adjudicated lands, and not presently under mineral lease on March 12, 2008, situated in St. Bernard Parish, Louisiana, and more particularly described as follows: Beginning at the Southeast Corner of Block 12, North Lake Borgne Area, having Coordinates of X = 2,607,250.00 and Y = 520,958.70; thence South 6,878.70 feet to a point having Coordinates of X = 2,607,250.00 and Y = 514,080.00; thence West 9,000.00 feet to a point having Coordinates of X = 2,598,250.00 and Y = 514,080.00; thence North 6,878.70 feet to a point on the South line of Block 12, North Lake Borgne Area, having Coordinates of X = 2,598,250.00 and Y = 520,958.70; thence East along the South line of Block 12, North Lake Borgne Area, 9,000.00 feet to the point of beginning, containing approximately **1,421.22 acres**, all as more particularly outlined on a plat on file in the Office of Mineral Resources, Department of Natural Resources. All bearings, distances and coordinates are based on Louisiana Coordinate System of 1927, (North or South Zone), where applicable.

NOTE: The above description of the Tract nominated for lease has been provided and corrected, where required, exclusively by the nomination party. Any mineral lease selected from this Tract and awarded by the Louisiana State Mineral Board shall be without warranty of any kind, either express, implied, or statutory, including, but not limited to, the implied warranties of merchantability and fitness for a particular purpose. Should the mineral lease awarded by the Louisiana State Mineral Board be subsequently modified, cancelled or abrogated due to the existence of conflicting leases, operating agreements, private claims or other future obligations or conditions which may affect all or any portion of the leased Tract, it shall not relieve the Lessee of the obligation to pay any bonus due thereon to the Louisiana State Mineral Board, nor shall the Louisiana State Mineral Board be obligated to refund any consideration paid by the Lessor prior to such modification, cancellation, or abrogation, including, but not limited to, bonuses, rentals and royalties.

NOTE: The Office of Mineral Resources will require a minimum bonus of \$230 per acre and a minimum royalty of 23%.

NOTE: The State of Louisiana does hereby reserve, and this lease shall be subject to, the imprescriptible right of surface use in the nature of a servitude in favor of the Department of Natural Resources, including its Offices and Commissions, for the sole purpose of implementing, constructing, servicing and maintaining approved coastal zone management and/or restoration projects. Utilization of any and all rights derived under this lease by the mineral lessee, its agents, successors or assigns, shall not interfere with nor hinder the reasonable surface use by the

Department of Natural Resources, its Offices or Commissions, as herein above reserved.

NOTE: The Department of Wildlife and Fisheries has designated certain areas in the coastal waters of the State of Louisiana as Oyster Seed Bed Areas. The exact location of those Seed Bed Areas must be obtained from the Department of Wildlife and Fisheries and any work done under a mineral lease from the State of Louisiana may necessarily be conducted in conformity with the rules and regulations promulgated by the said Department of Wildlife and Fisheries for Oyster Seed Bed Areas.

Applicant: CYPRESS ENERGY CORPORATION

Bidder	Cash Payment	Price/Acre	Rental	Oil	Gas	Other

NORTH LAKE BORGNE AREA

LB0013

P.O.B.

ST BERNARD PARISH

LB0012

CHANDELEUR SOUND

BRETON SOUND



TRACT 39655 - Portion of Block 13, North Lake Borgne Area, St. Bernard Parish, Louisiana

All of the lands now or formerly constituting the beds and bottoms of all water bodies of every nature and description as to which title is vested in the State of Louisiana, together with all islands arising therein and other lands formed by accretion or by reliction, where allowed by law, excepting tax adjudicated lands, and not presently under mineral lease on March 12, 2008, situated in St. Bernard Parish, Louisiana, and more particularly described as follows: Beginning at a point having Coordinates of X = 2,607,250.00 and Y = 520,958.70; thence East, along the South Line of Block 13, North Lake Borgne Area, 13,350.00 feet to the Northwest corner of Block 22, Chandeleur Sound Area Addition having Coordinates of X = 2,620,600.00 and Y = 520,958.70; thence South along the West Line of Block 22, Chandeleur Sound Area Addition, 6,878.70 feet to the Southwest Corner of Block 22, Chandeleur Sound Area Addition, having Coordinates of X = 2,620,600.00 and Y = 514,080.00; thence West 13,350.00 feet to a point having Coordinates of X = 2,607,250.00 and Y = 514,080.00; thence North for a distance of 6,878.70 feet to the point of beginning, containing approximately **2108.14 acres**, all as more particularly outlined on a plat on file in the Office of Mineral Resources, Department of Natural Resources. All bearings, distances and coordinates are based on Louisiana Coordinate System of 1927, (North or South Zone), where applicable.

NOTE: The above description of the Tract nominated for lease has been provided and corrected, where required, exclusively by the nomination party. Any mineral lease selected from this Tract and awarded by the Louisiana State Mineral Board shall be without warranty of any kind, either express, implied, or statutory, including, but not limited to, the implied warranties of merchantability and fitness for a particular purpose. Should the mineral lease awarded by the Louisiana State Mineral Board be subsequently modified, cancelled or abrogated due to the existence of conflicting leases, operating agreements, private claims or other future obligations or conditions which may affect all or any portion of the leased Tract, it shall not relieve the Lessee of the obligation to pay any bonus due thereon to the Louisiana State Mineral Board, nor shall the Louisiana State Mineral Board be obligated to refund any consideration paid by the Lessor prior to such modification, cancellation, or abrogation, including, but not limited to, bonuses, rentals and royalties.

NOTE: The Office of Mineral Resources will require a minimum bonus of \$230 per acre and a minimum royalty of 23%.

NOTE: The State of Louisiana does hereby reserve, and this lease shall be subject to, the imprescriptible right of surface use in the nature of a servitude in favor of the Department of Natural Resources, including its Offices and Commissions, for the sole purpose of implementing, constructing, servicing and maintaining approved coastal zone management and/or restoration projects. Utilization of any and all rights derived under this lease by the mineral lessee, its agents, successors or assigns,

shall not interfere with nor hinder the reasonable surface use by the Department of Natural Resources, its Offices or Commissions, as herein above reserved.

Applicant: CYPRESS ENERGY CORPORATION

Bidder	Cash Payment	Price/Acre	Rental	Oil	Gas	Other

Legend
 08030078
 Blocks



ST BERNARD PARISH

NORTH LAKE BORGNE AREA

CHANDELEUR SOUND

LB0013

LB0012

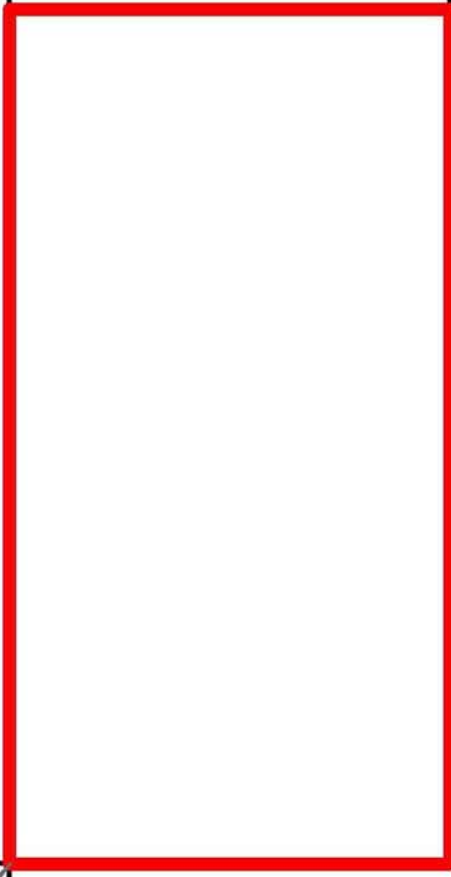
P.O.B.

CX0022

CHANDELEUR SOUND AREA ADDITION, REVISED

CX0023

BRETON SOUND



TRACT 39656 - St. Bernard Parish, Louisiana

All of the lands now or formerly constituting the beds and bottoms of all water bodies of every nature and description as to which title is vested in the State of Louisiana, together with all islands arising therein and other lands formed by accretion or by reliction, where allowed by law, excepting tax adjudicated lands, and not presently under mineral lease on March 12, 2008, situated in St. Bernard Parish, Louisiana, and more particularly described as follows: Beginning at a point having Coordinates of X = 2,598,250.00 and Y = 514,080.00; thence East 9,000.00 feet to a point having Coordinates of X = 2,607,250.00 and Y = 514,080.00; thence South 7,375.00 feet to a point having Coordinates of X = 2,607,250.00 and Y = 506,705.00; thence West 9,000.00 feet to a point having Coordinates of X = 2,598,250.00 and Y = 506,705.00; thence North 7,375.00 feet to the point of beginning, containing approximately **1366 acres**, all as more particularly outlined on a plat on file in the Office of Mineral Resources, Department of Natural Resources. All bearings, distances and coordinates are based on Louisiana Coordinate System of 1927, (North or South Zone), where applicable.

NOTE: The above description of the Tract nominated for lease has been provided and corrected, where required, exclusively by the nomination party. Any mineral lease selected from this Tract and awarded by the Louisiana State Mineral Board shall be without warranty of any kind, either express, implied, or statutory, including, but not limited to, the implied warranties of merchantability and fitness for a particular purpose. Should the mineral lease awarded by the Louisiana State Mineral Board be subsequently modified, cancelled or abrogated due to the existence of conflicting leases, operating agreements, private claims or other future obligations or conditions which may affect all or any portion of the leased Tract, it shall not relieve the Lessee of the obligation to pay any bonus due thereon to the Louisiana State Mineral Board, nor shall the Louisiana State Mineral Board be obligated to refund any consideration paid by the Lessor prior to such modification, cancellation, or abrogation, including, but not limited to, bonuses, rentals and royalties.

NOTE: The Office of Mineral Resources will require a minimum bonus of \$230 per acre and a minimum royalty of 23%.

NOTE: The State of Louisiana does hereby reserve, and this lease shall be subject to, the imprescriptible right of surface use in the nature of a servitude in favor of the Department of Natural Resources, including its Offices and Commissions, for the sole purpose of implementing, constructing, servicing and maintaining approved coastal zone management and/or restoration projects. Utilization of any and all rights derived under this lease by the mineral lessee, its agents, successors or assigns, shall not interfere with nor hinder the reasonable surface use by the Department of Natural Resources, its Offices or Commissions, as herein above reserved.

NOTE: The Department of Wildlife and Fisheries has designated certain areas in the coastal waters of the State of Louisiana as Oyster Seed Bed Areas. The exact location of those Seed Bed Areas must be obtained from the Department of Wildlife and Fisheries and any work done under a mineral lease from the State of Louisiana may necessarily be conducted in conformity with the rules and regulations promulgated by the said Department of Wildlife and Fisheries for Oyster Seed Bed Areas.

Applicant: CYPRESS ENERGY CORPORATION

Bidder	Cash Payment	Price/Acre	Rental	Oil	Gas	Other



ST BERNARD PARISH

CHANDELEUR SOUND

P.O.B.



T11S - R17E

NINEMILE BAY

TRACT 39657 - St. Bernard Parish, Louisiana

All of the lands now or formerly constituting the beds and bottoms of all water bodies of every nature and description as to which title is vested in the State of Louisiana, together with all islands arising therein and other lands formed by accretion or by reliction, where allowed by law, excepting tax adjudicated lands, and not presently under mineral lease on March 12, 2008, situated in St. Bernard Parish, Louisiana, and more particularly described as follows: Beginning at the Northwest Corner of Block 23, Chandeleur Sound Area Addition, having Coordinates of X = 2,620,600.00 and Y = 514,080.00; thence South along the West line of Block 23, Chandeleur Sound Area Addition 7,375.00 feet to a point on the West line of Block 23, Chandeleur Sound Area, having Coordinates of X = 2,620,600.00 and Y = 506,705.00; thence West 548.00 feet to a point on the Eastern Boundary of State Lease No. 19390 and State Lease No. 19059, having Coordinates of X = 2,620,052.00 and Y = 506,705.00; thence North along the Eastern Boundary of State Lease No. 19390 and State Lease No. 19059, 2,938.00 feet the Northeast Corner of State Lease No. 19059, having Coordinates of X = 2,620,052.00 and Y = 509,643.00; thence West along the Northern Boundary of State Lease No. 19059, 5,514.00 feet to the Northwest Corner of State Lease No. 19059, having Coordinates of X = 2,614,538.00 and Y = 509,643.00; thence South along the Western Boundary of State Lease No. 19059, 2,938.00 feet to a point on the Western Boundary of State Lease No. 19059, having Coordinates of X = 2,614,538.00 and Y = 506,705.00; thence West 7,288.00 feet to a point having Coordinates of X = 2,607,250.00 and Y = 506,705.00; thence North 7,375.00 feet to a point having Coordinates of X = 2,607,250.00 and Y = 514,080.00; thence East 13,350.00 feet to the point of beginning, containing approximately **1,787 acres**, all as more particularly outlined on a plat on file in the Office of Mineral Resources, Department of Natural Resources. All bearings, distances and coordinates are based on Louisiana Coordinate System of 1927, (North or South Zone), where applicable.

NOTE: The above description of the Tract nominated for lease has been provided and corrected, where required, exclusively by the nomination party. Any mineral lease selected from this Tract and awarded by the Louisiana State Mineral Board shall be without warranty of any kind, either express, implied, or statutory, including, but not limited to, the implied warranties of merchantability and fitness for a particular purpose. Should the mineral lease awarded by the Louisiana State Mineral Board be subsequently modified, cancelled or abrogated due to the existence of conflicting leases, operating agreements, private claims or other future obligations or conditions which may affect all or any portion of the leased Tract, it shall not relieve the Lessee of the obligation to pay any bonus due thereon to the Louisiana State Mineral Board, nor shall the Louisiana State Mineral Board be obligated to refund any consideration paid by the Lessor prior to such modification, cancellation, or abrogation, including, but not limited to, bonuses, rentals and royalties.

NOTE: The Office of Mineral Resources will require a minimum bonus of \$230 per acre and a minimum royalty of 23%.

NOTE: The State of Louisiana does hereby reserve, and this lease shall be subject to, the imprescriptible right of surface use in the nature of a servitude in favor of the Department of Natural Resources, including its Offices and Commissions, for the sole purpose of implementing, constructing, servicing and maintaining approved coastal zone management and/or restoration projects. Utilization of any and all rights derived under this lease by the mineral lessee, its agents, successors or assigns, shall not interfere with nor hinder the reasonable surface use by the Department of Natural Resources, its Offices or Commissions, as herein above reserved.

NOTE: The Department of Wildlife and Fisheries has designated certain areas in the coastal waters of the State of Louisiana as Oyster Seed Bed Areas. The exact location of those Seed Bed Areas must be obtained from the Department of Wildlife and Fisheries and any work done under a mineral lease from the State of Louisiana may necessarily be conducted in conformity with the rules and regulations promulgated by the said Department of Wildlife and Fisheries for Oyster Seed Bed Areas.

Applicant: CYPRESS ENERGY CORPORATION

Bidder	Cash Payment	Price/Acre	Rental	Oil	Gas	Other

Legend
08030079
Active_Leases
DOQQ2004



ST BERNARD PARISH

CHANDELEUR SOUND

P.O.B.

SL 19059

SL 19390

NINEMILE BAY

CHANDELEUR SOUND AREA ADDITION, REVISED

TRACT 39658 - Portion of Block 23, Chandeleur Sound Addition Area, Revised, St. Bernard Parish, Louisiana

All of the lands now or formerly constituting the beds and bottoms of all water bodies of every nature and description as to which title is vested in the State of Louisiana, together with all islands arising therein and other lands formed by accretion or by reliction, where allowed by law, excepting tax adjudicated lands, and not presently under mineral lease on March 12, 2008, situated in St. Bernard Parish, Louisiana, and more particularly described as follows: Beginning at the Northwest Corner of Block 23, Chandeleur Sound Area Addition, having Coordinates of X = 2,620,600.00 and Y = 514,080.00; thence East 14,750.00 feet along the North line of said Block 23 to its Northeast Corner, having Coordinates of X = 2,635,350.00 and Y = 514,080.00; thence South 8,774.00 feet along the East line of said Block 23 to a point having Coordinates of X = 2,635,350.00 and Y = 505,306.00; thence West 848.00 feet to the Northeast Corner of State Lease No. 19061, having Coordinates of X = 2,634,502.00 and Y = 505,306.00; thence West 4,547.00 feet along the North line of said State Lease No. 19061 to its Northwest Corner, having Coordinates of X = 2,629,955.00 and Y = 505,306.00; thence North 1,399.00 feet to a point having Coordinates of X = 2,629,955.00 and Y = 506,705.00; thence West 9,355.00 feet to a point on the West line of said Block 23, having Coordinates of X = 2,620,600.00 and Y = 506,705.00; thence North 7,375.00 feet along the West line of said Block 23 to the point of beginning, containing approximately **2,272 acres**, all as more particularly outlined on a plat on file in the Office of Mineral Resources, Department of Natural Resources. All bearings, distances and coordinates are based on Louisiana Coordinate System of 1927, (North or South Zone), where applicable.

NOTE: The above description of the Tract nominated for lease has been provided and corrected, where required, exclusively by the nomination party. Any mineral lease selected from this Tract and awarded by the Louisiana State Mineral Board shall be without warranty of any kind, either express, implied, or statutory, including, but not limited to, the implied warranties of merchantability and fitness for a particular purpose. Should the mineral lease awarded by the Louisiana State Mineral Board be subsequently modified, cancelled or abrogated due to the existence of conflicting leases, operating agreements, private claims or other future obligations or conditions which may affect all or any portion of the leased Tract, it shall not relieve the Lessee of the obligation to pay any bonus due thereon to the Louisiana State Mineral Board, nor shall the Louisiana State Mineral Board be obligated to refund any consideration paid by the Lessor prior to such modification, cancellation, or abrogation, including, but not limited to, bonuses, rentals and royalties.

NOTE: The Office of Mineral Resources will require a minimum bonus of \$230 per acre and a minimum royalty of 23%.

NOTE: The State of Louisiana does hereby reserve, and this lease shall be subject to, the imprescriptible right of surface use in the nature of a

servitude in favor of the Department of Natural Resources, including its Offices and Commissions, for the sole purpose of implementing, constructing, servicing and maintaining approved coastal zone management and/or restoration projects. Utilization of any and all rights derived under this lease by the mineral lessee, its agents, successors or assigns, shall not interfere with nor hinder the reasonable surface use by the Department of Natural Resources, its Offices or Commissions, as herein above reserved.

NOTE: The Department of Wildlife and Fisheries has designated certain areas in the coastal waters of the State of Louisiana as Oyster Seed Bed Areas. The exact location of those Seed Bed Areas must be obtained from the Department of Wildlife and Fisheries and any work done under a mineral lease from the State of Louisiana may necessarily be conducted in conformity with the rules and regulations promulgated by the said Department of Wildlife and Fisheries for Oyster Seed Bed Areas.

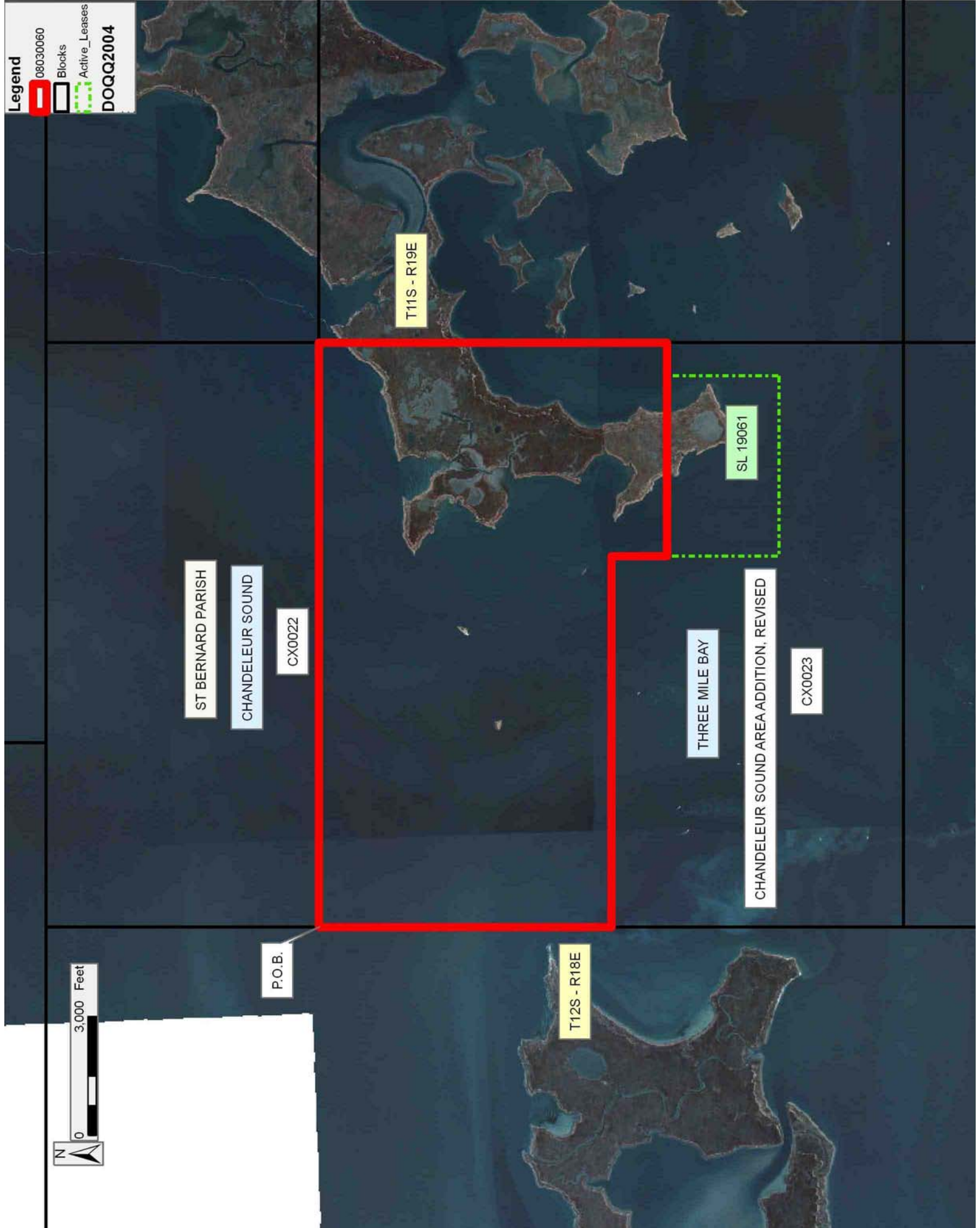
Applicant: CYPRESS ENERGY CORPORATION

Bidder	Cash Payment	Price/Acre	Rental	Oil	Gas	Other

Legend

- 08030060
- Blocks
- Active_Leases

DOQQ2004



P.O.B.

ST BERNARD PARISH

CHANDELEUR SOUND

CX0022

THREE MILE BAY

CHANDELEUR SOUND AREA ADDITION, REVISED

CX0023

T11S - R19E

SL 19061

T12S - R18E

TRACT 39659 - St. Bernard Parish, Louisiana

All of the lands now or formerly constituting the beds and bottoms of all water bodies of every nature and description as to which title is vested in the State of Louisiana, together with all islands arising therein and other lands formed by accretion or by reliction, where allowed by law, excepting tax adjudicated lands, and not presently under mineral lease on March 12, 2008, situated in St. Bernard Parish, Louisiana, and more particularly described as follows: Beginning at a point having Coordinates of X = 2,598,250.00 and Y = 514,080.00; thence South 7,375.00 feet to a point having Coordinates of X = 2,598,250.00 and Y = 506,705.00; thence West 9,000.00 feet to a point having Coordinates of X = 2,589,250.00 and Y = 506,705.00; thence North 7,375.00 feet to a point having Coordinates of X = 2,589,250.00 and Y = 514,080.00; thence East 9,000.00 feet to the point of beginning, containing approximately **603 acres**, all as more particularly outlined on a plat on file in the Office of Mineral Resources, Department of Natural Resources. All bearings, distances and coordinates are based on Louisiana Coordinate System of 1927, (North or South Zone), where applicable.

NOTE: The above description of the Tract nominated for lease has been provided and corrected, where required, exclusively by the nomination party. Any mineral lease selected from this Tract and awarded by the Louisiana State Mineral Board shall be without warranty of any kind, either express, implied, or statutory, including, but not limited to, the implied warranties of merchantability and fitness for a particular purpose. Should the mineral lease awarded by the Louisiana State Mineral Board be subsequently modified, cancelled or abrogated due to the existence of conflicting leases, operating agreements, private claims or other future obligations or conditions which may affect all or any portion of the leased Tract, it shall not relieve the Lessee of the obligation to pay any bonus due thereon to the Louisiana State Mineral Board, nor shall the Louisiana State Mineral Board be obligated to refund any consideration paid by the Lessor prior to such modification, cancellation, or abrogation, including, but not limited to, bonuses, rentals and royalties.

NOTE: The Office of Mineral Resources will require a minimum bonus of \$230 per acre and a minimum royalty of 23%.

NOTE: The State of Louisiana does hereby reserve, and this lease shall be subject to, the imprescriptible right of surface use in the nature of a servitude in favor of the Department of Natural Resources, including its Offices and Commissions, for the sole purpose of implementing, constructing, servicing and maintaining approved coastal zone management and/or restoration projects. Utilization of any and all rights derived under this lease by the mineral lessee, its agents, successors or assigns, shall not interfere with nor hinder the reasonable surface use by the Department of Natural Resources, its Offices or Commissions, as herein above reserved.

NOTE: The Department of Wildlife and Fisheries has designated certain areas in the coastal waters of the State of Louisiana as Oyster Seed Bed Areas. The exact location of those Seed Bed Areas must be obtained from the Department of Wildlife and Fisheries and any work done under a mineral lease from the State of Louisiana may necessarily be conducted in conformity with the rules and regulations promulgated by the said Department of Wildlife and Fisheries for Oyster Seed Bed Areas.

Applicant: CYPRESS ENERGY CORPORATION

Bidder	Cash Payment	Price/Acre	Rental	Oil	Gas	Other



TRACT 39660 - Calcasieu Parish, Louisiana

All of the lands now or formerly constituting the beds and bottoms of all water bodies of every nature and description as to which title is vested in the State of Louisiana, together with all islands arising therein and other lands formed by accretion or by reliction, where allowed by law, excepting tax adjudicated lands, and not presently under mineral lease on March 12, 2008, situated in Calcasieu Parish, Louisiana, and more particularly described as follows: Beginning at a point having Coordinates of X = 1,340,871.44 and Y = 530,953.24; thence South 88 degrees 47 minutes 55 seconds East 5,366.41 feet to a point having Coordinates of X = 1,346,236.67 and Y = 530,840.74; thence South 89 degrees 21 minutes 07 seconds East 5,356.81 feet to a point having Coordinates of X = 1,351,593.14 and Y = 530,780.14; thence South 89 degrees 07 minutes 33 seconds East 5,292.76 feet to a point having Coordinates of X = 1,356,885.28 and Y = 530,699.39; thence South 00 degrees 46 minutes 26 seconds West 5,296.22 feet to a point having Coordinates of X = 1,356,813.74 and Y = 525,403.65; thence South 01 degrees 12 minutes 16 seconds West 5,262.20 feet to a point having Coordinates of X = 1,356,703.14 and Y = 520,142.61; thence North 89 degrees 14 minutes 27 seconds West 5,166.61 feet to a point having Coordinates of X = 1,351,536.99 and Y = 520,211.08; thence North 88 degrees 53 minutes 50 seconds West 5,349.50 feet to a point having Coordinates of X = 1,346,188.47 and Y = 520,314.05; thence North 89 degrees 16 minutes 13 seconds West 5,237.65 feet to a point having Coordinates of X = 1,340,951.25 and Y = 520,380.76; thence North 00 degrees 55 minutes 51 seconds East 5,335.00 feet to a point having Coordinates of X = 1,341,037.91 and Y = 525,715.06; thence North 01 degrees 49 minutes 13 seconds West 5,240.83 feet to the point of beginning, **LESS AND EXCEPT** all of State Lease No. 18529, as amended, that lies within the above described tract, being more fully described as follows: Commencing at the point of beginning of the above described tract having Coordinates of X = 1,340,871.44 and Y = 530,953.24; thence South 57 degrees 07 minutes 39 seconds East 10,297.48 feet to the Northwest corner said State Lease No. 18529 having Coordinates of X = 1,349,520.10 and Y = 525,364.08; thence along the boundary of said State Lease No. 18529 the following courses: North 64 degrees 32 minutes 11 seconds East 3,708.47 feet to a point having Coordinates of X = 1,352,868.32 and Y = 526,958.49; South 00 degrees 29 minutes 07 seconds West 2,731.27 feet to a point having Coordinates of X = 1,352,845.18 and Y = 524,227.32; North 88 degrees 45 minutes 37 seconds West 3,325.56 feet to a point having Coordinates of X = 1,349,520.40 and Y = 524,299.27 and North 00 degrees 01 minutes 00 seconds West 1,064.81 feet back to its Northwest corner; the nominated tract containing approximately **86 acres**, all as more particularly outlined on a plat on file in the Office of Mineral Resources, Department of Natural Resources. All bearings, distances and coordinates are based on Louisiana Coordinate System of 1927, (North or South Zone), where applicable.

NOTE: The above description of the Tract nominated for lease has been provided and corrected, where required, exclusively by the nomination

party. Any mineral lease selected from this Tract and awarded by the Louisiana State Mineral Board shall be without warranty of any kind, either express, implied, or statutory, including, but not limited to, the implied warranties of merchantability and fitness for a particular purpose. Should the mineral lease awarded by the Louisiana State Mineral Board be subsequently modified, cancelled or abrogated due to the existence of conflicting leases, operating agreements, private claims or other future obligations or conditions which may affect all or any portion of the leased Tract, it shall not relieve the Lessee of the obligation to pay any bonus due thereon to the Louisiana State Mineral Board, nor shall the Louisiana State Mineral Board be obligated to refund any consideration paid by the Lessor prior to such modification, cancellation, or abrogation, including, but not limited to, bonuses, rentals and royalties.

NOTE: The State of Louisiana does hereby reserve, and this lease shall be subject to, the imprescriptible right of surface use in the nature of a servitude in favor of the Department of Natural Resources, including its Offices and Commissions, for the sole purpose of implementing, constructing, servicing and maintaining approved coastal zone management and/or restoration projects. Utilization of any and all rights derived under this lease by the mineral lessee, its agents, successors or assigns, shall not interfere with nor hinder the reasonable surface use by the Department of Natural Resources, its Offices or Commissions, as herein above reserved.

Applicant: THUNDERBAY EXPLORATION, INC.

Bidder	Cash Payment	Price/Acre	Rental	Oil	Gas	Other

Legend
08030002
DOQQ2004

CALCASIEU PARISH

T11S - R10W

SL 18529

0 3,000 Feet



P.O.B.

BAYOU CHOUIPIQUE