

TRACT 39628 - Portion of Block 16, South Pass Area, Plaquemines Parish, Louisiana

The beds and bottoms of all water bodies belonging to the State of Louisiana located in Block 16, South Pass Area, together with any present lands formed by accretion to the shoreline or islands formed therein, located in Plaquemines Parish, Louisiana, owned by and not presently under mineral lease as of March 12, 2008, from the State of Louisiana, the geographical area of which is more fully described as follows: Beginning at the Southeast corner of Block 16, South Pass Area, having Coordinates of X = 2,733,992.00 and Y = 141,182.00; thence West 10,605.28 feet along the South line of said Block 16 to a point of intersection with the Eastern boundary of the Pass-A-Loutre Wildlife Management Area having Coordinates of X = 2,723,386.72 and Y = 141,182.00; thence Northeasterly along the Eastern boundary of said Pass-A-Loutre Wildlife Management Area to a point of intersection with the North line of said Block 16 having Coordinates of X = 2,730,992.43 and Y = 155,940.00; thence East 2,999.57 feet along the North line of said Block 16 to its Northeast corner having Coordinates of X = 2,733,992.00 and Y = 155,940.00; thence South 14,758.00 feet along the East line of said Block 16 to the point of beginning, containing approximately **2,304.64 acres**, all as more particularly outlined on a plat on file in the Office of Mineral Resources, Department of Natural Resources. All bearings, distances and coordinates are based on Louisiana Coordinate System of 1927, (North or South Zone).

NOTE: The above description of the Tract nominated for lease has been provided and corrected, where required, exclusively by the nomination party. Any mineral lease selected from this Tract and awarded by the Louisiana State Mineral Board shall be without warranty of any kind, either express, implied, or statutory, including, but not limited to, the implied warranties of merchantability and fitness for a particular purpose. Should the mineral lease awarded by the Louisiana State Mineral Board be subsequently modified, cancelled or abrogated due to the existence of conflicting leases, operating agreements, private claims or other future obligations or conditions which may affect all or any portion of the leased Tract, it shall not relieve the Lessee of the obligation to pay any bonus due thereon to the Louisiana State Mineral Board, nor shall the Louisiana State Mineral Board be obligated to refund any consideration paid by the Lessor prior to such modification, cancellation, or abrogation, including, but not limited to, bonuses, rentals and royalties.

NOTE: The State of Louisiana does hereby reserve, and this lease shall be subject to, the imprescriptible right of surface use in the nature of a servitude in favor of the Department of Natural Resources, including its Offices and Commissions, for the sole purpose of implementing, constructing, servicing and maintaining approved coastal zone management and/or restoration projects. Utilization of any and all rights derived under this lease by the mineral lessee, its agents, successors or assigns, shall not interfere with nor hinder the reasonable surface use by the

Department of Natural Resources, its Offices or Commissions, as herein above reserved.

NOTE: It appears, according to our records, that a portion of this Tract is located within the restrictive safety fairway area as set out by the Corps of Engineers, U.S. Army and/or the restrictive anchorage area as set out by the U.S. Coast Guard.

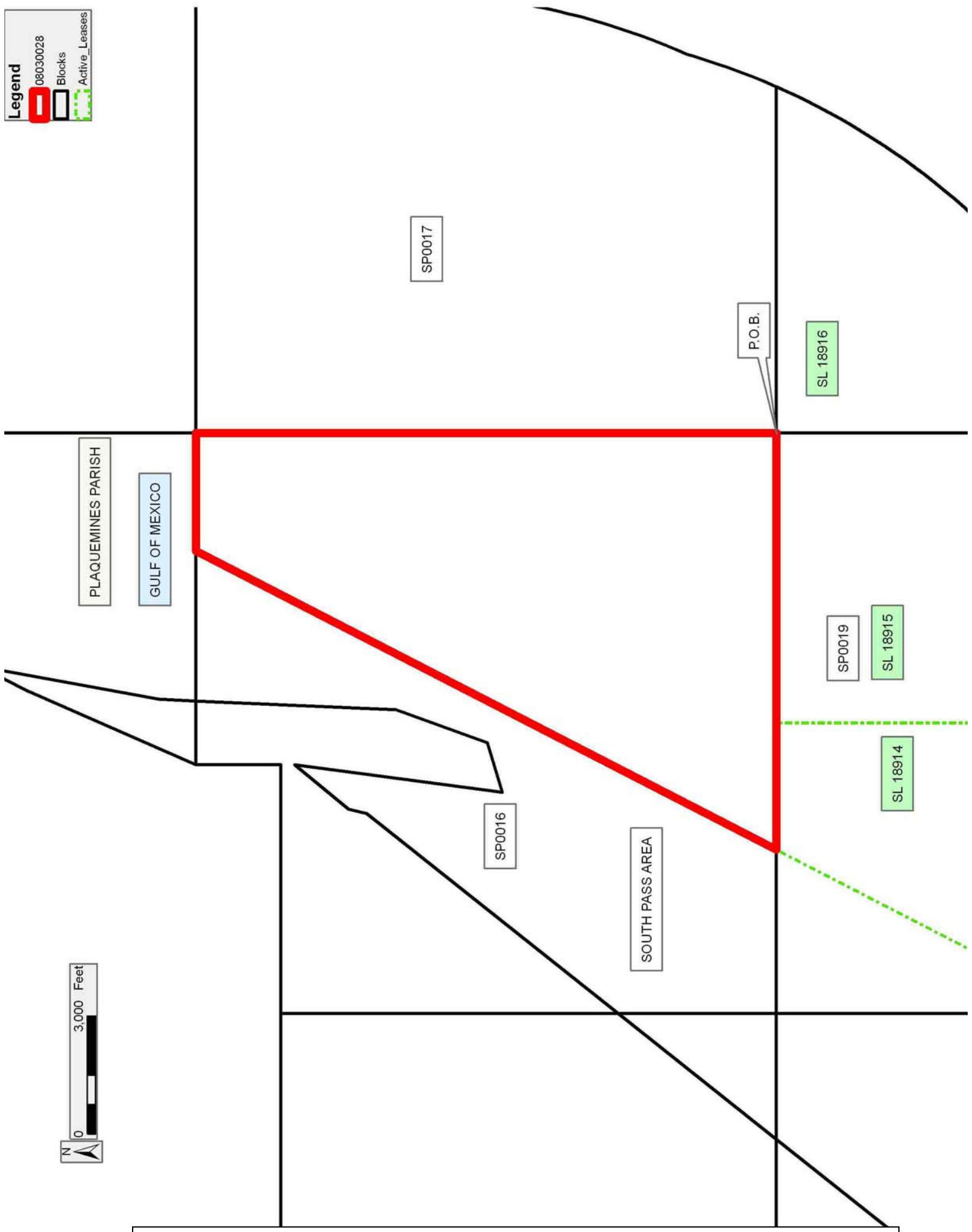
NOTE: The Department of Wildlife and Fisheries has designated certain areas in the coastal waters of the State of Louisiana as Oyster Seed Bed Areas. The exact location of those Seed Bed Areas must be obtained from the Department of Wildlife and Fisheries and any work done under a mineral lease from the State of Louisiana may necessarily be conducted in conformity with the rules and regulations promulgated by the said Department of Wildlife and Fisheries for Oyster Seed Bed Areas.

Applicant: OIL AND GAS RESOURCES, INC.

Bidder	Cash Payment	Price/Acre	Rental	Oil	Gas	Other

Legend

- 08030028
- Blocks
- Active_Leases



TRACT 39629 - Portion of Block 17, South Pass Area, Plaquemines Parish, Louisiana

The beds and bottoms of all water bodies belonging to the State of Louisiana located in Block 17, South Pass Area, together with any present lands formed by accretion to the shoreline or islands formed therein, located in Plaquemines Parish, Louisiana, owned by and not presently under mineral lease as of March 12, 2008, from the State of Louisiana, the geographical area of which is more fully described as follows: Beginning at a point on the North line of Block 17, South Pass Area, having Coordinates of X = 2,741,371.00 and Y = 155,940.00; thence South 14,758.00 feet to a point on the South line of said Block 17 having Coordinates of X = 2,741,371.00 and Y = 141,182.00; thence West 7,379.00 feet along the South line of said Block 17 to its Southwest corner having Coordinates of X = 2,733,992.00 and Y = 141,182.00; thence North 14,758.00 feet along the West line of said Block 17 to its Northwest corner having Coordinates of X = 2,733,992.00 and Y = 155,940.00; thence East 7,379.00 feet along the North line of said Block 17 to the point of beginning, containing approximately **2,499.98 acres**, all as more particularly outlined on a plat on file in the Office of Mineral Resources, Department of Natural Resources. All bearings, distances and coordinates are based on Louisiana Coordinate System of 1927, (North or South Zone).

NOTE: The above description of the Tract nominated for lease has been provided and corrected, where required, exclusively by the nomination party. Any mineral lease selected from this Tract and awarded by the Louisiana State Mineral Board shall be without warranty of any kind, either express, implied, or statutory, including, but not limited to, the implied warranties of merchantability and fitness for a particular purpose. Should the mineral lease awarded by the Louisiana State Mineral Board be subsequently modified, cancelled or abrogated due to the existence of conflicting leases, operating agreements, private claims or other future obligations or conditions which may affect all or any portion of the leased Tract, it shall not relieve the Lessee of the obligation to pay any bonus due thereon to the Louisiana State Mineral Board, nor shall the Louisiana State Mineral Board be obligated to refund any consideration paid by the Lessor prior to such modification, cancellation, or abrogation, including, but not limited to, bonuses, rentals and royalties.

NOTE: The State of Louisiana does hereby reserve, and this lease shall be subject to, the imprescriptible right of surface use in the nature of a servitude in favor of the Department of Natural Resources, including its Offices and Commissions, for the sole purpose of implementing, constructing, servicing and maintaining approved coastal zone management and/or restoration projects. Utilization of any and all rights derived under this lease by the mineral lessee, its agents, successors or assigns, shall not interfere with nor hinder the reasonable surface use by the Department of Natural Resources, its Offices or Commissions, as herein above reserved.

Applicant: OIL AND GAS RESOURCES, INC.

Bidder	Cash Payment	Price/Acre	Rental	Oil	Gas	Other

Legend

- 08030032
- Blocks
- Active_Leases



TRACT 39630 - Portion of Block 17, South Pass Area, Plaquemines Parish, Louisiana

The beds and bottoms of all water bodies belonging to the State of Louisiana located in Block 17, South Pass Area, together with any present lands formed by accretion to the shoreline or islands formed therein, located in Plaquemines Parish, Louisiana, owned by and not presently under mineral lease as of March 12, 2008, from the State of Louisiana, the geographical area of which is more fully described as follows: Beginning at a point on the North line of Block 17, South Pass Area, having Coordinates of X = 2,741,371.00 and Y = 155,940.00; thence East 4,214.11 feet to a point on the Three Mile Line, as decreed by the Supreme Court of the United States, as determined by a Special Master appointed therein, in litigation styled *United States v. State of Louisiana et al No. 9 Original*, in 1975, having Coordinates of X = 2,745,585.11 and Y = 155,940.00; thence along said Three Mile Line the following: Southwesterly on a straight line to a point having Coordinates of X = 2,745,156 and Y = 153,600; Southwesterly along an arc to the right having a radius of 18,240.60 feet and a center at X = 2,727,215 and Y = 156,890 to a point having Coordinates of X = 2,745,054 and Y = 153,083; Southwesterly along an arc to the right having a radius of 18,240.60 feet and a center at X = 2,726,951 and Y = 150,846 to a point having Coordinates of X = 2,743,622 and Y = 143,444 and Southwesterly along an arc to the right having a radius of 18,240.60 feet and a center at X = 2,726,105 and Y = 148,530 to a point on the South line of said Block 17 having Coordinates of X = 2,742,800.09 and Y = 141,182.00; thence West 1,429.09 feet along the South line of said Block 17 to a point having Coordinates of X = 2,741,371.00 and Y = 141,182.00; thence North 14,758.00 feet to the point of beginning, containing approximately **1,111.95 acres, LESS AND EXCEPT** that portion thereof, if any, lying seaward of the line three nautical miles from the coast line of Louisiana, as said three mile line has been decreed by the Supreme Court of the United States, as determined by a Special Master appointed therein, in litigation styled **United States v. State of Louisiana et al No. 9 Original**, in 1975, all as more particularly outlined on a plat in the Office of Mineral Resources, Department of Natural Resources. All bearings, distances and coordinates are based on the Louisiana Coordinate System of 1927, (South Zone).

NOTE: The above description of the Tract nominated for lease has been provided and corrected, where required, exclusively by the nomination party. Any mineral lease selected from this Tract and awarded by the Louisiana State Mineral Board shall be without warranty of any kind, either express, implied, or statutory, including, but not limited to, the implied warranties of merchantability and fitness for a particular purpose. Should the mineral lease awarded by the Louisiana State Mineral Board be subsequently modified, cancelled or abrogated due to the existence of conflicting leases, operating agreements, private claims or other future obligations or conditions which may affect all or any portion of the leased Tract, it shall not relieve the Lessee of the obligation to pay any bonus due thereon to the Louisiana State Mineral Board, nor shall

the Louisiana State Mineral Board be obligated to refund any consideration paid by the Lessor prior to such modification, cancellation, or abrogation, including, but not limited to, bonuses, rentals and royalties.

NOTE: The State of Louisiana does hereby reserve, and this lease shall be subject to, the imprescriptible right of surface use in the nature of a servitude in favor of the Department of Natural Resources, including its Offices and Commissions, for the sole purpose of implementing, constructing, servicing and maintaining approved coastal zone management and/or restoration projects. Utilization of any and all rights derived under this lease by the mineral lessee, its agents, successors or assigns, shall not interfere with nor hinder the reasonable surface use by the Department of Natural Resources, its Offices or Commissions, as herein above reserved.

Applicant: OIL AND GAS RESOURCES, INC.

Bidder	Cash Payment	Price/Acre	Rental	Oil	Gas	Other

