

TRACT 38925 - Portion of Block 21, Main Pass Area, Revised, Plaquemines Parish, Louisiana

All of the lands now or formerly constituting the beds and bottoms of all water bodies of every nature and description the title of which vests in the State of Louisiana, together with all islands arising therein and other lands formed by accretion or by reliction, where allowed by law, excepting tax adjudicated lands, and not presently under mineral lease on March 14, 2007, situated in Plaquemines Parish, Louisiana, and more particularly described as follows: Beginning at a point on the North line of Block 21, Main Pass Area, Revised, having Coordinates of X = 2,627,975.00 and Y = 337,080.00; thence East 7,375.00 feet along the North line of said Block 21 to its Northeast corner having Coordinates of X = 2,635,350.00 and Y = 337,080.00; thence South 1,900.00 feet along the East line of said Block 21 to the Northeast corner of State Lease No. 4708, as amended, having Coordinates of X = 2,635,350.00 and Y = 335,180.00; thence along the boundary of said State Lease No. 4708 the following courses: South 68 degrees 11 minutes 55 seconds West 2,154.07 feet to a point having Coordinates of X = 2,633,350.00 and Y = 334,380.00; South 63 degrees 26 minutes 06 seconds West 1,118.03 feet to a point having Coordinates of X = 2,632,350.00 and Y = 333,880.00; South 57 degrees 59 minutes 41 seconds West 943.40 feet to a point having Coordinates of X = 2,631,550.00 and Y = 333,380.00; South 45 degrees 00 minutes 00 seconds West 707.11 feet to a point having Coordinates of X = 2,631,050.00 and Y = 332,880.00; South 30 degrees 57 minutes 50 seconds West 583.10 feet to a point having Coordinates of X = 2,630,750.00 and Y = 332,380.00; South 21 degrees 48 minutes 05 seconds West 538.52 feet to a point having Coordinates of X = 2,630,550.00 and Y = 331,880.00 and South 366.95 feet to the Northernmost Northeast corner of State Lease No. 15536, as amended, having Coordinates of X = 2,630,550.00 and Y = 331,513.05; thence along the boundary of said State Lease No. 15536 the following courses: West 1,673.00 feet to a point having Coordinates of X = 2,628,877.00 and Y = 331,513.05; South 3,835.05 feet to a point having Coordinates of X = 2,628,877.00 and Y = 327,678.00; East 3,591.00 feet to a point having Coordinates of X = 2,632,468.00 and Y = 327,678.00 and North 13 degrees 38 minutes 58 seconds West 2,188.41 feet to a point on the South boundary of said State Lease No. 4708 having Coordinates of X = 2,631,951.58 and Y = 329,804.61; thence along the South boundary of said State Lease No. 4708 the following courses: South 75 degrees 57 minutes 50 seconds East 513.76 feet to a point having Coordinates of X = 2,632,450.00 and Y = 329,680.00; East 500.00 feet to a point having Coordinates of X = 2,632,950.00 and Y = 329,680.00 and North 85 degrees 14 minutes 11 seconds East 2,408.32 feet to a point on the East line of said Block 21 having Coordinates of X = 2,635,350.00 and Y = 329,880.00; thence South 7,550.00 feet along the East line of Block 21 to its Southeast corner having Coordinates of X = 2,635,350.00 and Y = 322,330.00; thence West 7,375.00 feet along the South line of said Block 21 to a point having Coordinates of X = 2,627,975.00 and Y = 322,330.00; thence North 14,750.00 feet to the point of beginning, containing approximately **1,799.16 acres**, all as more particularly outlined on a plat on file in the Office of Mineral Resources, Department of

Natural Resources. All bearings, distances and coordinates are based on Louisiana Coordinate System of 1927, (North or South Zone), where applicable.

NOTE: The above description of the Tract nominated for lease has been provided and corrected, where required, exclusively by the nomination party. Any mineral lease selected from this Tract and awarded by the Louisiana State Mineral Board shall be without warranty of any kind, either express, implied, or statutory, including, but not limited to, the implied warranties of merchantability and fitness for a particular purpose. Should the mineral lease awarded by the Louisiana State Mineral Board be subsequently modified, cancelled or abrogated due to the existence of conflicting leases, operating agreements, private claims or other future obligations or conditions which may affect all or any portion of the leased Tract, it shall not relieve the Lessee of the obligation to pay any bonus due thereon to the Louisiana State Mineral Board, nor shall the Louisiana State Mineral Board be obligated to refund any consideration paid by the Lessor prior to such modification, cancellation, or abrogation, including, but not limited to, bonuses, rentals and royalties.

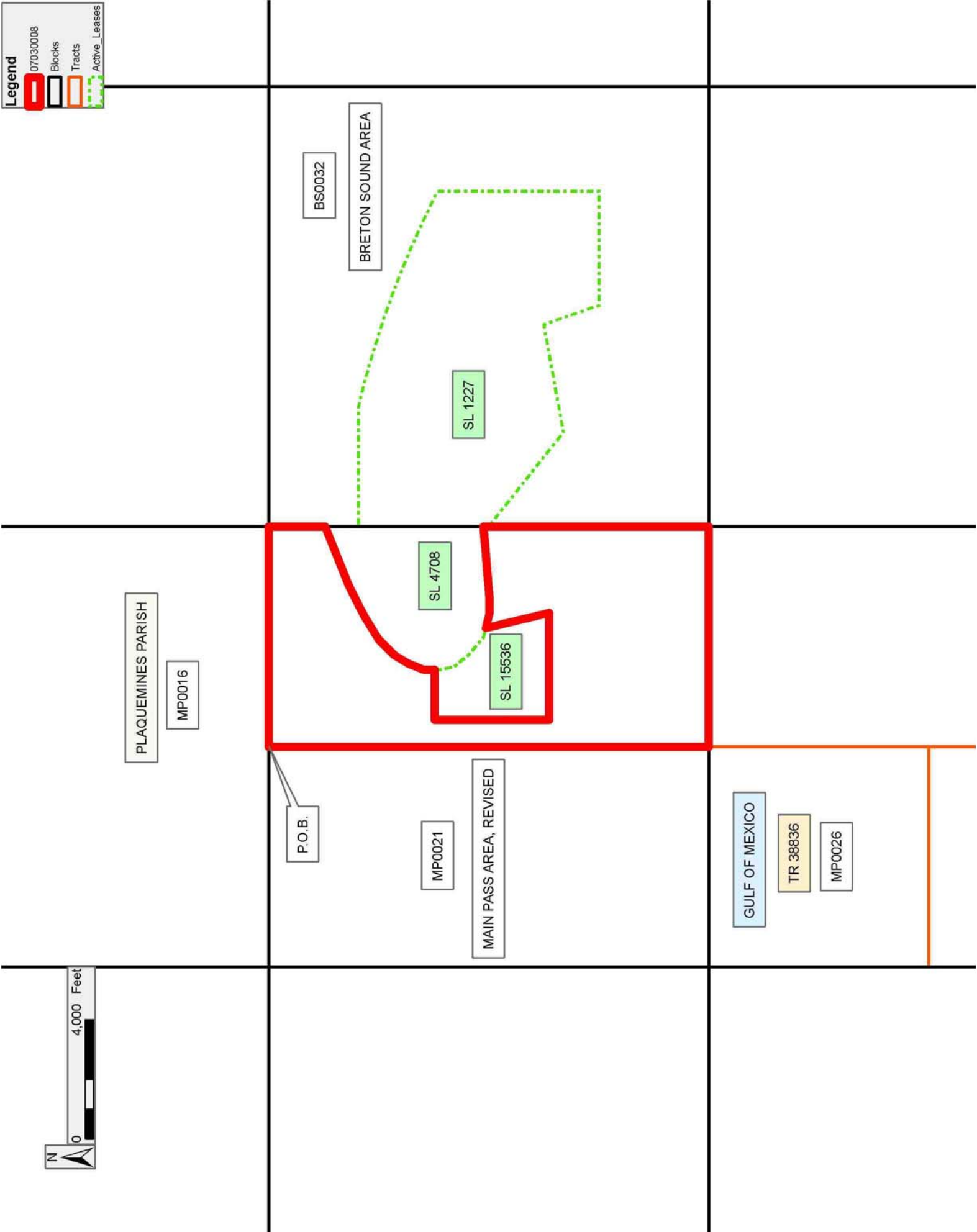
NOTE: The State of Louisiana does hereby reserve, and this lease shall be subject to, the imprescriptible right of surface use in the nature of a servitude in favor of the Department of Natural Resources, including its Offices and Commissions, for the sole purpose of implementing, constructing, servicing and maintaining approved coastal zone management and/or restoration projects. Utilization of any and all rights derived under this lease by the mineral lessee, its agents, successors or assigns, shall not interfere with nor hinder the reasonable surface use by the Department of Natural Resources, its Offices or Commissions, as herein above reserved.

Applicant: LOUISIANA MINERALS MANAGEMENT

Bidder	Cash Payment	Price/ Acre	Rental	Oil	Gas	Other

Legend

- 07030008
- Blocks
- Tracts
- Active_Leases



TRACT 38926 - Lafourche Parish, Louisiana

All of the lands now or formerly constituting the beds and bottoms of all water bodies of every nature and description the title of which vests in the State of Louisiana, together with all islands arising therein and other lands formed by accretion or by reliction, where allowed by law, excepting tax adjudicated lands, and not presently under mineral lease on March 14, 2007, situated in Lafourche Parish, Louisiana, and more particularly described as follows: Beginning at a point having Coordinates of X = 2,253,700.00 and Y = 333,466.08; Thence Southerly 1,743 feet, more or less, to a point on the northeastern meander line of Lake Long, said point also being on the northern boundary of State of Louisiana State Lease No. 328, as amended; Thence Northwesterly 4,855 feet, more or less, on and along said northeastern meander line of Lake Long and the northern boundary of said State of Louisiana State Lease No. 328, as amended, to a point, said point being the northern most point of said State of Louisiana State Lease No. 328, as amended; Thence Southwesterly 7,160 feet, more or less, on and along the northwestern boundary of said State of Louisiana State Lease No. 328, as amended, to a point, said point being on the southwestern meander line of Lake Long; Thence Northwesterly 3,360 feet, more or less, on and along said southwestern meander line of Lake Long to a point; Thence North 31 degrees 26 minutes 17 seconds East 6,417 feet, more or less, to a point having Coordinates of X = 2,244,969.67 and Y = 337,206.83, said point being common to the eastern most point of State of Louisiana State Lease No. 9637, as amended; Thence East 8,730.33 feet to a point having Coordinates of X = 2,253,700.00 and Y = 337,206.83; Thence South 3,740.75 feet to the point of beginning, **LESS AND EXCEPT** any portion of the above described tract which may lie within State Lease No. 328 as amended, containing approximately **757 acres**, all as more particularly outlined on a plat on file in the Office of Mineral Resources, Department of Natural Resources. All bearings, distances and coordinates are based on Louisiana Coordinate System of 1927, (North or South Zone), where applicable.

NOTE: The above description of the Tract nominated for lease has been provided and corrected, where required, exclusively by the nomination party. Any mineral lease selected from this Tract and awarded by the Louisiana State Mineral Board shall be without warranty of any kind, either express, implied, or statutory, including, but not limited to, the implied warranties of merchantability and fitness for a particular purpose. Should the mineral lease awarded by the Louisiana State Mineral Board be subsequently modified, cancelled or abrogated due to the existence of conflicting leases, operating agreements, private claims or other future obligations or conditions which may affect all or any portion of the leased Tract, it shall not relieve the Lessee of the obligation to pay any bonus due thereon to the Louisiana State Mineral Board, nor shall the Louisiana State Mineral Board be obligated to refund any consideration paid by the Lessor prior to such modification, cancellation, or abrogation, including, but not limited to, bonuses, rentals and royalties.

NOTE: The State of Louisiana does hereby reserve, and this lease shall be subject to, the imprescriptible right of surface use in the nature of a servitude in favor of the Department of Natural Resources, including its Offices and Commissions, for the sole purpose of implementing, constructing, servicing and maintaining approved coastal zone management and/or restoration projects. Utilization of any and all rights derived under this lease by the mineral lessee, its agents, successors or assigns, shall not interfere with nor hinder the reasonable surface use by the Department of Natural Resources, its Offices or Commissions, as herein above reserved.

Applicant: K-EXPLORATION CO.

Bidder	Cash Payment	Price/ Acre	Rental	Oil	Gas	Other

Legend

07030048

Active_Leases

DOQQ2004



TRACT 38927 - Lafourche Parish, Louisiana

All of the lands now or formerly constituting the beds and bottoms of all water bodies of every nature and description the title of which vests in the State of Louisiana, together with all islands arising therein and other lands formed by accretion or by reliction, where allowed by law, excepting tax adjudicated lands, and not presently under mineral lease on March 14, 2007, situated in Lafourche Parish, Louisiana, and more particularly described as follows: Beginning at a point having Coordinates of X = 2,265,050.00 and Y = 324,066.08; Thence West 11,350.00 feet to a point having Coordinates of X = 2,253,700.00 and Y = 324,066.08; Thence Northerly approximately 2,218 feet to a point said to be the southeast corner of State Lease No. 328, as amended; Thence Northerly approximately 3,197 feet on and along the eastern boundary of said State Lease No. 328, as amended, to a point having Coordinates of X = 2,253,700.00 and Y = 329,480.90, said point being the southernmost point of State Lease No. 17416, as amended; Thence on and along the southern, eastern and northern boundaries of said State Lease No 17416, as amended, the following courses and distances, to wit: North 48 degrees 43 minutes 57 seconds East 1,503.50 feet to a point having Coordinates of X = 2,254,830.09 and Y = 330,472.57; North 40 degrees 14 minutes 50 seconds West 1,251.90 feet to a point having Coordinates of X = 2,254,021.25 and Y = 331,428.10; and North 59 degrees 45 minutes 33 seconds West 371.85 feet to a point said to be on the northeastern corner of said State Lease No. 328 as amended, having Coordinates of X = 2,253,700.00 and Y = 331,615.38; Thence North 1,850.70 feet to a point having Coordinates of X = 2,253,700.00 and Y = 333,466.08; Thence East 9,350.00 feet to a point having Coordinates of X = 2,263,050.00 and Y = 333,466.08; Thence South 45 degrees 00 minutes 00 seconds East 2,828.42 feet to a point having Coordinates of X = 2,265,050.00 and Y = 331,466.08; Thence South 7,400.00 feet to the point of beginning, **LESS AND EXCEPT** any portion of the above described tract that may lie in State Lease No. 328 or State Lease No. 17416, containing approximately **446 acres**, all as more particularly outlined on a plat on file in the Office of Mineral Resources, Department of Natural Resources. All bearings, distances and coordinates are based on Louisiana Coordinate System of 1927, (North or South Zone), where applicable.

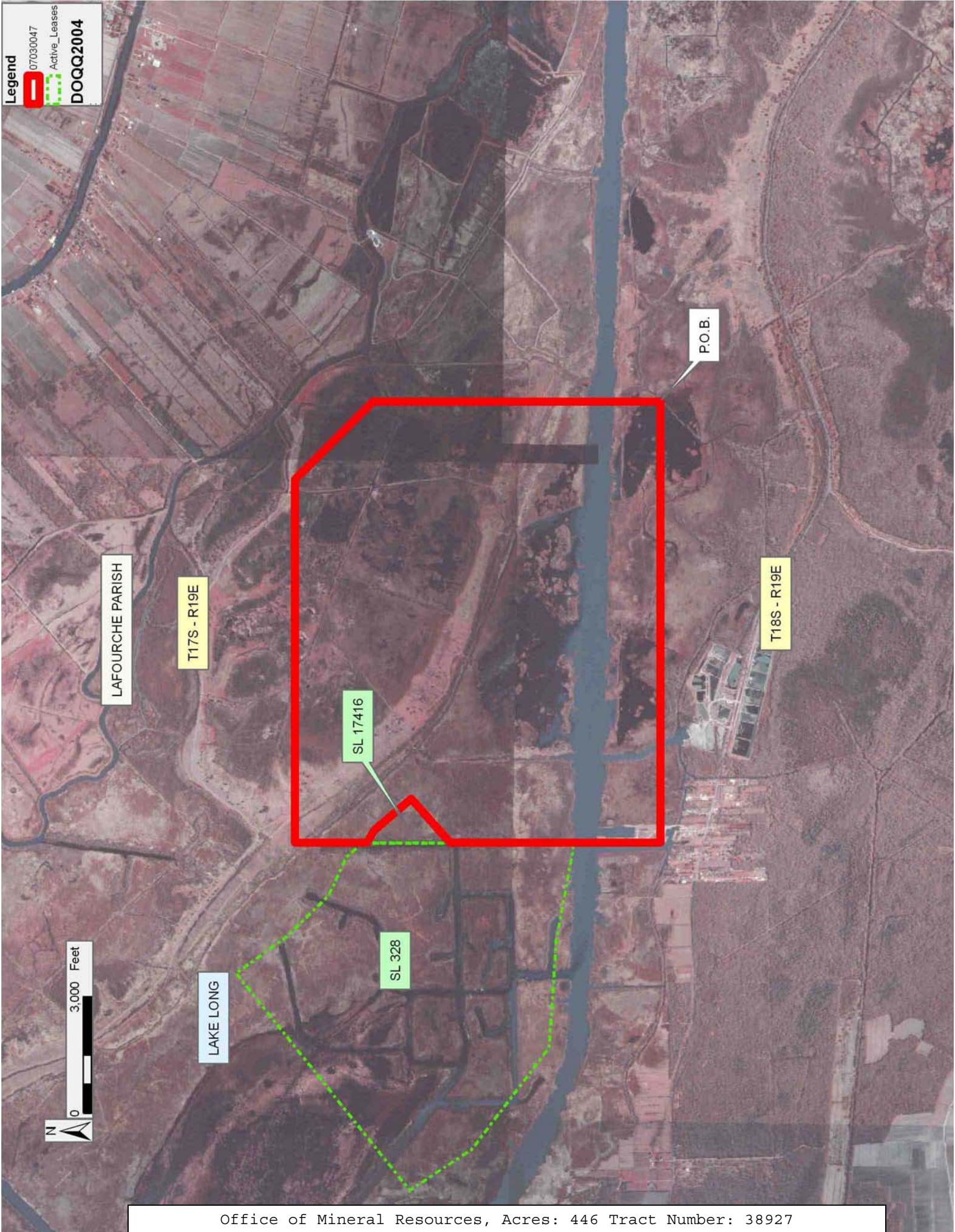
NOTE: The above description of the Tract nominated for lease has been provided and corrected, where required, exclusively by the nomination party. Any mineral lease selected from this Tract and awarded by the Louisiana State Mineral Board shall be without warranty of any kind, either express, implied, or statutory, including, but not limited to, the implied warranties of merchantability and fitness for a particular purpose. Should the mineral lease awarded by the Louisiana State Mineral Board be subsequently modified, cancelled or abrogated due to the existence of conflicting leases, operating agreements, private claims or other future obligations or conditions which may affect all or any portion of the leased Tract, it shall not relieve the Lessee of the obligation to pay any bonus due thereon to the Louisiana State Mineral Board, nor shall the Louisiana State Mineral Board be obligated to refund any consideration

paid by the Lessor prior to such modification, cancellation, or abrogation, including, but not limited to, bonuses, rentals and royalties.

NOTE: The State of Louisiana does hereby reserve, and this lease shall be subject to, the imprescriptible right of surface use in the nature of a servitude in favor of the Department of Natural Resources, including its Offices and Commissions, for the sole purpose of implementing, constructing, servicing and maintaining approved coastal zone management and/or restoration projects. Utilization of any and all rights derived under this lease by the mineral lessee, its agents, successors or assigns, shall not interfere with nor hinder the reasonable surface use by the Department of Natural Resources, its Offices or Commissions, as herein above reserved.

Applicant: K-EXPLORATION CO.

Bidder	Cash Payment	Price/ Acre	Rental	Oil	Gas	Other



TRACT 38928 - Lafourche Parish, Louisiana

All of the lands now or formerly constituting the beds and bottoms of all water bodies of every nature and description the title of which vests in the State of Louisiana, together with all islands arising therein and other lands formed by accretion or by reliction, where allowed by law, excepting tax adjudicated lands, and not presently under mineral lease on March 14, 2007, situated in Lafourche Parish, Louisiana, and more particularly described as follows: Beginning at a point having Coordinates of X = 2,246,100.00 and Y = 326,100.00; Thence East 7,600.00 feet to a point having Coordinates of X = 2,253,700.00 and Y = 326,100.00; Thence South 2,033.92 feet to a point having Coordinates of X = 2,253,700.00 and Y = 324,066.08; Thence East 10,880.00 feet to a point having Coordinates of X = 2,264,580.00 and Y = 324,066.08; Thence South 5,886.08 feet to a point having Coordinates of X = 2,264,580.00 and Y = 318,180.00; Thence West 18,480.00 feet to a point having Coordinates of X = 2,246,100.00 and Y = 318,180.00; Thence North 7,920.00 feet to the point of beginning, containing approximately **11 acres**, all as more particularly outlined on a plat on file in the Office of Mineral Resources, Department of Natural Resources. All bearings, distances and coordinates are based on Louisiana Coordinate System of 1927, (North or South Zone), where applicable.

NOTE: The above description of the Tract nominated for lease has been provided and corrected, where required, exclusively by the nomination party. Any mineral lease selected from this Tract and awarded by the Louisiana State Mineral Board shall be without warranty of any kind, either express, implied, or statutory, including, but not limited to, the implied warranties of merchantability and fitness for a particular purpose. Should the mineral lease awarded by the Louisiana State Mineral Board be subsequently modified, cancelled or abrogated due to the existence of conflicting leases, operating agreements, private claims or other future obligations or conditions which may affect all or any portion of the leased Tract, it shall not relieve the Lessee of the obligation to pay any bonus due thereon to the Louisiana State Mineral Board, nor shall the Louisiana State Mineral Board be obligated to refund any consideration paid by the Lessor prior to such modification, cancellation, or abrogation, including, but not limited to, bonuses, rentals and royalties.

NOTE: The State of Louisiana does hereby reserve, and this lease shall be subject to, the imprescriptible right of surface use in the nature of a servitude in favor of the Department of Natural Resources, including its Offices and Commissions, for the sole purpose of implementing, constructing, servicing and maintaining approved coastal zone management and/or restoration projects. Utilization of any and all rights derived under this lease by the mineral lessee, its agents, successors or assigns, shall not interfere with nor hinder the reasonable surface use by the Department of Natural Resources, its Offices or Commissions, as herein above reserved.

Applicant: K-EXPLORATION CO.

Bidder	Cash Payment	Price/ Acre	Rental	Oil	Gas	Other



TRACT 38929 - St. Mary Parish, Louisiana

All of the lands now or formerly constituting the beds and bottoms of all water bodies of every nature and description the title of which vests in the State of Louisiana, together with all islands arising therein and other lands formed by accretion or by reliction, where allowed by law, excepting tax adjudicated lands, and not presently under mineral lease on March 14, 2007, situated in St. Mary Parish, Louisiana, and more particularly described as follows: Beginning at a point having Coordinates of X = 1,917,969.91 and Y = 305,822.74; thence Northeasterly approximately 9,090 feet to the Southernmost Southwest corner of State Lease No. 340, as amended; thence Easterly approximately 6,595 feet along the South boundary of said State Lease No. 340 to its Southeast corner; thence Northerly approximately 3,172 feet along the East boundary of said State Lease No. 340 to its point of intersection with the Southern boundary of State Lease No. 329, as amended; thence Easterly approximately 4,547 feet along the Southern boundary of said State Lease No. 329 to a point; thence Southerly approximately 3,111 feet to a point having Coordinates of X = 1,933,714.68 and Y = 313,682.13; thence South 89 degrees 53 minutes 36 seconds East 75.14 feet to a point having Coordinates of X = 1,933,789.82 and Y = 313,681.99; thence South 00 degree 06 minutes 15 seconds West approximately 1,511 feet to a point of intersection with the Northern boundary of the Atchafalaya Delta Wildlife Management Area; thence Southwesterly along the meanders of the boundary of said Atchafalaya Delta Wildlife Management Area to a point having Coordinates of X = 1,930,619.00 and Y = 309,763.00; thence South 3,940.26 feet along the West boundary of said Atchafalaya Delta Wildlife Management Area to a point having Coordinates of X = 1,930,619.00 and Y = 305,822.74; thence West 12,649.09 feet to the point of beginning, **LESS AND EXCEPT** any portions of State Lease No. 329, as amended, and State Lease No. 340, as amended, that may lie within the above described tract, **ALSO LESS AND EXCEPT** any portion of the Atchafalaya Delta Wildlife Management Area that may lie within the above described tract, containing approximately **2,373 acres**, all as more particularly outlined on a plat on file in the Office of Mineral Resources, Department of Natural Resources. All bearings, distances and coordinates are based on Louisiana Coordinate System of 1927, (North or South Zone), where applicable.

NOTE: The above description of the Tract nominated for lease has been provided and corrected, where required, exclusively by the nomination party. Any mineral lease selected from this Tract and awarded by the Louisiana State Mineral Board shall be without warranty of any kind, either express, implied, or statutory, including, but not limited to, the implied warranties of merchantability and fitness for a particular purpose. Should the mineral lease awarded by the Louisiana State Mineral Board be subsequently modified, cancelled or abrogated due to the existence of conflicting leases, operating agreements, private claims or other future obligations or conditions which may affect all or any portion of the leased Tract, it shall not relieve the Lessee of the obligation to pay any bonus due thereon to the Louisiana State Mineral Board, nor shall

the Louisiana State Mineral Board be obligated to refund any consideration paid by the Lessor prior to such modification, cancellation, or abrogation, including, but not limited to, bonuses, rentals and royalties.

NOTE: The above described tract may be in the vicinity of existing shell reefs where drilling and dredging operations must be conducted in strict conformity with the regulations adopted by the Louisiana Department of Wildlife and Fisheries and/or the U.S. Corps of Engineers, U.S. Army.

NOTE: The State of Louisiana does hereby reserve, and this lease shall be subject to, the imprescriptible right of surface use in the nature of a servitude in favor of the Department of Natural Resources, including its Offices and Commissions, for the sole purpose of implementing, constructing, servicing and maintaining approved coastal zone management and/or restoration projects. Utilization of any and all rights derived under this lease by the mineral lessee, its agents, successors or assigns, shall not interfere with nor hinder the reasonable surface use by the Department of Natural Resources, its Offices or Commissions, as herein above reserved.

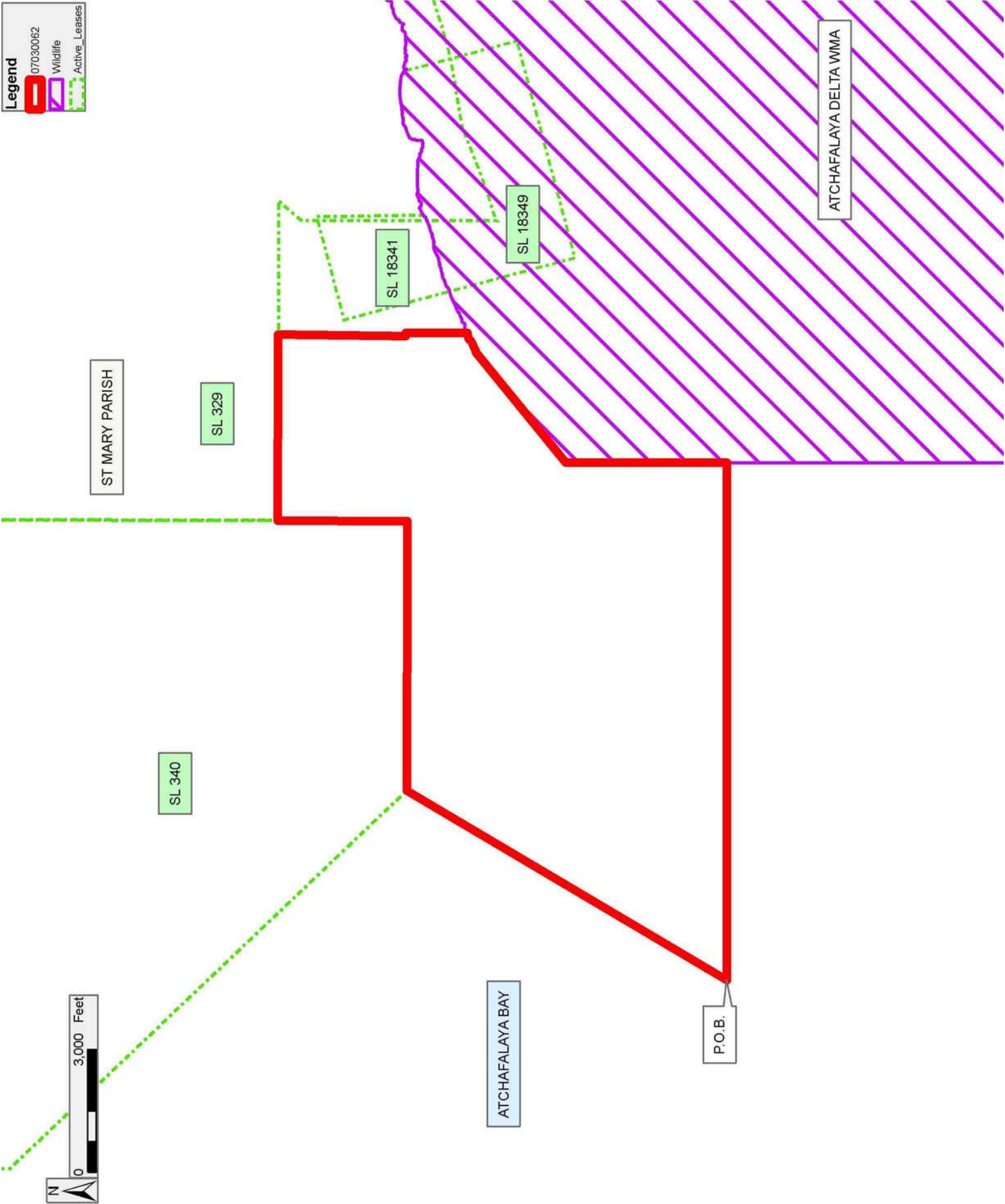
NOTE: The Department of Wildlife and Fisheries has designated certain areas in the coastal waters of the State of Louisiana as Oyster Seed Bed Areas. The exact location of those Seed Bed Areas must be obtained from the Department of Wildlife and Fisheries and any work done under a mineral lease from the State of Louisiana may necessarily be conducted in conformity with the rules and regulations promulgated by the said Department of Wildlife and Fisheries for Oyster Seed Bed Areas.

Applicant: THEOPHILUS OIL GAS & LAND SERVICES LLC

Bidder	Cash Payment	Price/ Acre	Rental	Oil	Gas	Other

Legend

- 07030062
- Wildlife
- Active Leases



TRACT 38930 - Portion of Blocks 399, and 400, Eugene Island Area, Revised, Iberia and St. Mary Parishes, Louisiana

All of the lands now or formerly constituting the beds and bottoms of all water bodies of every nature and description the title of which vests in the State of Louisiana, together with all islands arising therein and other lands formed by accretion or by reliction, where allowed by law, excepting tax adjudicated lands, and not presently under mineral lease on March 14, 2007, situated in Iberia and St. Mary Parishes, Louisiana, and more particularly described as follows: Beginning at a point having Coordinates of X = 1,917,969.91 and Y = 305,822.74; thence East 12,649.09 feet to a point on the West boundary of the Atchafalaya Delta Wildlife Management Area having Coordinates of X = 1,930,619.00 and Y = 305,822.74; thence South approximately 8,255 feet along the West boundary of said Atchafalaya Delta Wildlife Management Area to a point on the North boundary of State Lease No. 340, as amended, having a Coordinate of X = 1,930,619.00; thence Westerly approximately 12,649 feet along the North boundary of said State Lease No. 340 to a point having a Coordinate of X = 1,917,969.91; thence North approximately 8,280 feet to the point of beginning, **LESS AND EXCEPT** any portion of State Lease No. 340, as amended, that may lie within the above described tract, **ALSO LESS AND EXCEPT** any portion of the Atchafalaya Delta Wildlife Management Area that may lie within the above described tract, containing approximately **2,401 acres**, all as more particularly outlined on a plat on file in the Office of Mineral Resources, Department of Natural Resources. All bearings, distances and coordinates are based on Louisiana Coordinate System of 1927, (North or South Zone), where applicable.

NOTE: The above description of the Tract nominated for lease has been provided and corrected, where required, exclusively by the nomination party. Any mineral lease selected from this Tract and awarded by the Louisiana State Mineral Board shall be without warranty of any kind, either express, implied, or statutory, including, but not limited to, the implied warranties of merchantability and fitness for a particular purpose. Should the mineral lease awarded by the Louisiana State Mineral Board be subsequently modified, cancelled or abrogated due to the existence of conflicting leases, operating agreements, private claims or other future obligations or conditions which may affect all or any portion of the leased Tract, it shall not relieve the Lessee of the obligation to pay any bonus due thereon to the Louisiana State Mineral Board, nor shall the Louisiana State Mineral Board be obligated to refund any consideration paid by the Lessor prior to such modification, cancellation, or abrogation, including, but not limited to, bonuses, rentals and royalties.

NOTE: The above described tract may be in the vicinity of existing shell reefs where drilling and dredging operations must be conducted in strict conformity with the regulations adopted by the Louisiana Department of Wildlife and Fisheries and/or the U.S. Corps of Engineers, U.S. Army.

NOTE: The State of Louisiana does hereby reserve, and this lease shall be subject to, the imprescriptible right of surface use in the nature of a servitude in favor of the Department of Natural Resources, including its Offices and Commissions, for the sole purpose of implementing, constructing, servicing and maintaining approved coastal zone management and/or restoration projects. Utilization of any and all rights derived under this lease by the mineral lessee, its agents, successors or assigns, shall not interfere with nor hinder the reasonable surface use by the Department of Natural Resources, its Offices or Commissions, as herein above reserved.

NOTE: The Department of Wildlife and Fisheries has designated certain areas in the coastal waters of the State of Louisiana as Oyster Seed Bed Areas. The exact location of those Seed Bed Areas must be obtained from the Department of Wildlife and Fisheries and any work done under a mineral lease from the State of Louisiana may necessarily be conducted in conformity with the rules and regulations promulgated by the said Department of Wildlife and Fisheries for Oyster Seed Bed Areas.

Applicant: THEOPHILUS OIL GAS & LAND SERVICES LLC

Bidder	Cash Payment	Price/ Acre	Rental	Oil	Gas	Other

Legend

07030063

Wildlife

Active Leases

