

TRACT 38915 - Bossier and Caddo Parishes, Louisiana

All of the lands now or formerly constituting the beds and bottoms of all water bodies of every nature and description the title of which vests in the State of Louisiana, together with all islands arising therein and other lands formed by accretion or by reliction, where allowed by law, excepting tax adjudicated lands, and not presently under mineral lease on March 14, 2007, situated in Bossier and Caddo Parishes, Louisiana, and more particularly described as follows: Beginning at a point having Coordinates of X = 1,594,920.00 and Y = 764,280.00; thence East 18,480.00 feet to a point having Coordinates of X = 1,613,400.00 and Y = 764,280.00; thence South 15,980.00 feet to a point having Coordinates of X = 1,613,400.00 and Y = 748,300.00; thence West 10,857.34 feet to a point on the East line of State Lease No. 18980 having Coordinates of X = 1,602,542.66 and Y = 748,300.00; thence North 01 degrees 19 minutes 28 seconds East 10,695.30 feet along the East line of said State Lease No. 18980 to its Northeast corner having Coordinates of X = 1,602,789.87 and Y = 758,992.44; thence North 89 degrees 45 minutes 14 seconds West 7,869.94 feet along the North line of said State Lease No. 18980 to a point having Coordinates of X = 1,594,920.00 and Y = 759,026.25; thence North 5,253.75 feet to the Point of Beginning, containing approximately **289 acres**, all as more particularly outlined on a plat on file in the Office of Mineral Resources, Department of Natural Resources. All bearings, distances and coordinates are based on Louisiana Coordinate System of 1927, (North or South Zone), where applicable.

NOTE: The above description of the Tract nominated for lease has been provided and corrected, where required, exclusively by the nomination party. Any mineral lease selected from this Tract and awarded by the Louisiana State Mineral Board shall be without warranty of any kind, either express, implied, or statutory, including, but not limited to, the implied warranties of merchantability and fitness for a particular purpose. Should the mineral lease awarded by the Louisiana State Mineral Board be subsequently modified, cancelled or abrogated due to the existence of conflicting leases, operating agreements, private claims or other future obligations or conditions which may affect all or any portion of the leased Tract, it shall not relieve the Lessee of the obligation to pay any bonus due thereon to the Louisiana State Mineral Board, nor shall the Louisiana State Mineral Board be obligated to refund any consideration paid by the Lessor prior to such modification, cancellation, or abrogation, including, but not limited to, bonuses, rentals and royalties.

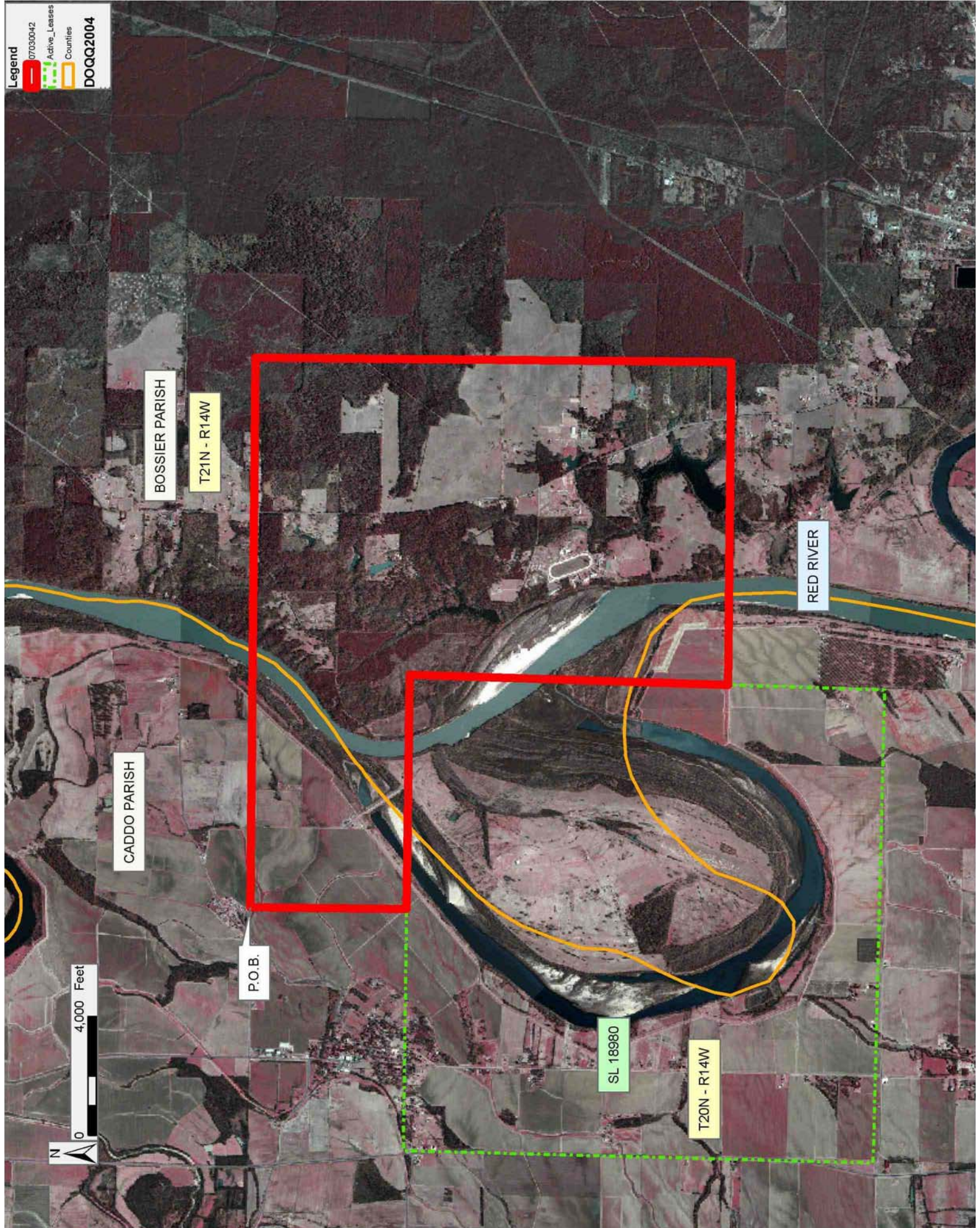
Applicant: TODD M. BERGERON

Bidder	Cash Payment	Price/Acre	Rental	Oil	Gas	Other

Legend

- 07030042
- Active_Leases
- Counties

DOQQ2004



TRACT 38916 - Bossier and Caddo Parishes, Louisiana

All of the lands now or formerly constituting the beds and bottoms of all water bodies of every nature and description the title of which vests in the State of Louisiana, together with all islands arising therein and other lands formed by accretion or by reliction, where allowed by law, excepting tax adjudicated lands, and not presently under mineral lease on March 14, 2007, situated in Bossier and Caddo Parishes, Louisiana, and more particularly described as follows: Beginning at a point having Coordinates of X = 1,602,421.26 and Y = 737,900.00; thence North 5,148.88 feet to the Southeast corner of State Lease No. 18980 having Coordinates of X = 1,602,421.26 and Y = 743,048.88; thence North 01 degrees 19 minutes 28 seconds East 5,252.52 feet along the East line of said State Lease No. 18980 to a point having Coordinates of X = 1,602,542.66 and Y = 748,300.00; thence East 10,857.34 feet to a point having Coordinates of X = 1,613,400.00 and Y = 748,300.00; thence South 10,400.00 feet to a point having Coordinates of X = 1,613,400.00 and Y = 737,900.00; thence West 10,978.74 feet to the Point of Beginning, containing approximately **215 acres**, all as more particularly outlined on a plat on file in the Office of Mineral Resources, Department of Natural Resources. All bearings, distances and coordinates are based on Louisiana Coordinate System of 1927, (North or South Zone), where applicable.

NOTE: The above description of the Tract nominated for lease has been provided and corrected, where required, exclusively by the nomination party. Any mineral lease selected from this Tract and awarded by the Louisiana State Mineral Board shall be without warranty of any kind, either express, implied, or statutory, including, but not limited to, the implied warranties of merchantability and fitness for a particular purpose. Should the mineral lease awarded by the Louisiana State Mineral Board be subsequently modified, cancelled or abrogated due to the existence of conflicting leases, operating agreements, private claims or other future obligations or conditions which may affect all or any portion of the leased Tract, it shall not relieve the Lessee of the obligation to pay any bonus due thereon to the Louisiana State Mineral Board, nor shall the Louisiana State Mineral Board be obligated to refund any consideration paid by the Lessor prior to such modification, cancellation, or abrogation, including, but not limited to, bonuses, rentals and royalties.

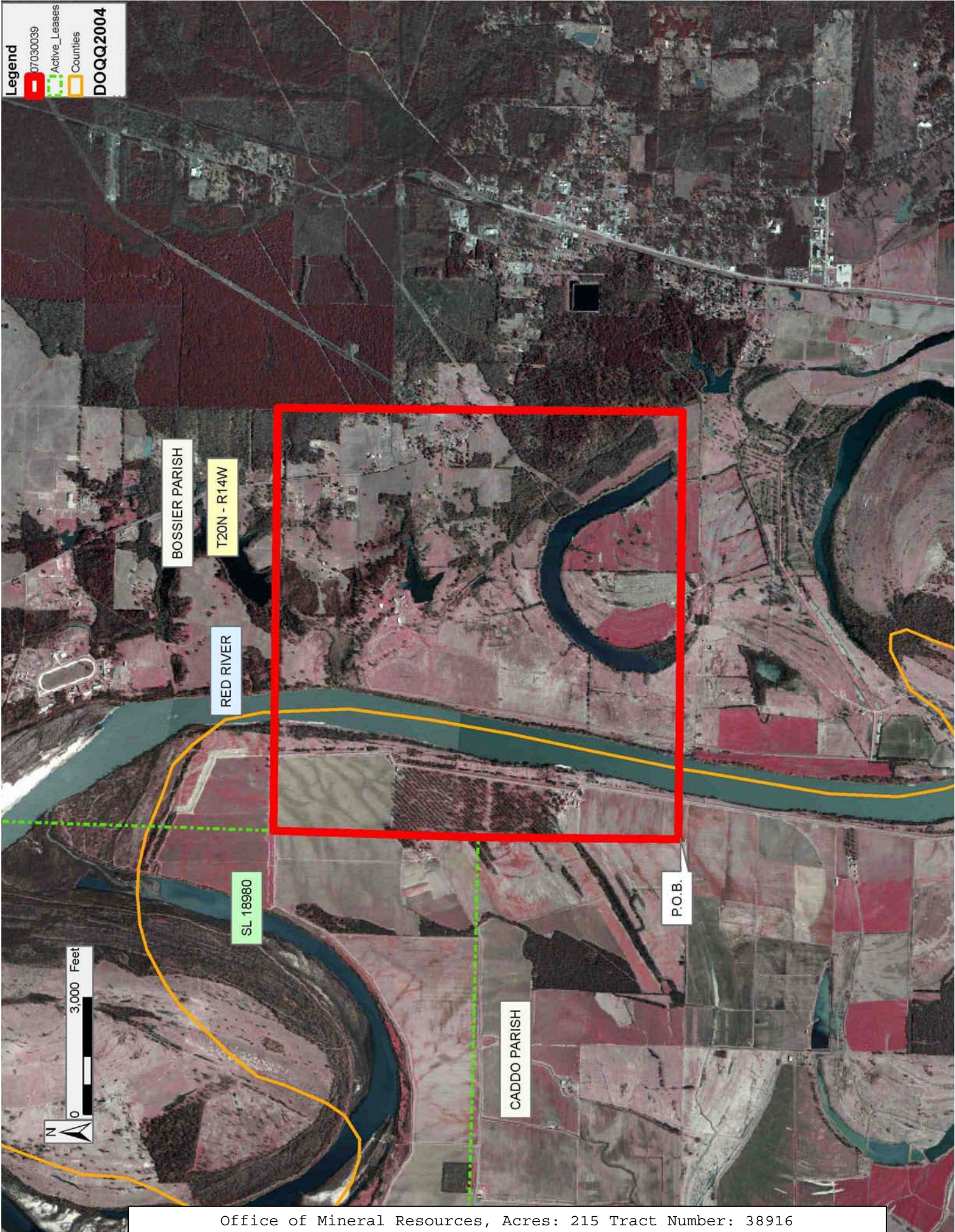
Bidder	Cash Payment	Price/Acre	Rental	Oil	Gas	Other

Applicant: TODD M. BERGERON

Legend

- 07/03/0039
- Active_Leases
- Counties

DOQQ2004



BOSSIER PARISH

T20N - R14W

RED RIVER

SL 18980

CADDO PARISH

P.O.B.

3,000 Feet



TRACT 38917 - Bossier and Caddo Parishes, Louisiana

All of the lands now or formerly constituting the beds and bottoms of all water bodies of every nature and description the title of which vests in the State of Louisiana, together with all islands arising therein and other lands formed by accretion or by reliction, where allowed by law, excepting tax adjudicated lands, and not presently under mineral lease on March 14, 2007, situated in Bossier and Caddo Parishes, Louisiana, and more particularly described as follows: Beginning at a point having Coordinates of X = 1,602,421.26 and Y = 737,900.00; thence East 16,078.74 feet to a point having Coordinates of X = 1,618,500.00 and Y = 737,900.00; thence South 11,100.00 feet to a point having Coordinates of X = 1,618,500.00 and Y = 726,800.00; thence West 9,200.00 feet to a point having Coordinates of X = 1,609,300.00 and Y = 726,800.00; thence North 53 degrees 07 minutes 48 seconds West 1,000.00 feet to a point having Coordinates of X = 1,608,500.00 and Y = 727,400.00; thence West 8,000.00 feet to a point having Coordinates of X = 1,600,500.00 and Y = 727,400.00; thence North 5,300.00 feet to a point having Coordinates of X = 1,600,500.00 and Y = 732,700.00; thence East 1,921.26 feet to a point having Coordinates of X = 1,602,421.26 and Y = 732,700.00; thence North 5,200.00 feet to the Point of Beginning, containing approximately **349 acres**, all as more particularly outlined on a plat on file in the Office of Mineral Resources, Department of Natural Resources. All bearings, distances and coordinates are based on Louisiana Coordinate System of 1927, (North or South Zone), where applicable.

NOTE: The above description of the Tract nominated for lease has been provided and corrected, where required, exclusively by the nomination party. Any mineral lease selected from this Tract and awarded by the Louisiana State Mineral Board shall be without warranty of any kind, either express, implied, or statutory, including, but not limited to, the implied warranties of merchantability and fitness for a particular purpose. Should the mineral lease awarded by the Louisiana State Mineral Board be subsequently modified, cancelled or abrogated due to the existence of conflicting leases, operating agreements, private claims or other future obligations or conditions which may affect all or any portion of the leased Tract, it shall not relieve the Lessee of the obligation to pay any bonus due thereon to the Louisiana State Mineral Board, nor shall the Louisiana State Mineral Board be obligated to refund any consideration paid by the Lessor prior to such modification, cancellation, or abrogation, including, but not limited to, bonuses, rentals and royalties.

Applicant: TODD M. BERGERON

Bidder	Cash Payment	Price/Acre	Rental	Oil	Gas	Other

Legend

- 07030041
- Countries
- DOQQ2004

BOSSIER PARISH

T20N - R13W

CAT ISLAND LAKE

RED RIVER

CADDO PARISH

T20N - R14W

P.O.B.

3,000 Feet



TRACT 38918 - Bossier and Caddo Parishes, Louisiana

All of the lands now or formerly constituting the beds and bottoms of all water bodies of every nature and description the title of which vests in the State of Louisiana, together with all islands arising therein and other lands formed by accretion or by reliction, where allowed by law, excepting tax adjudicated lands, and not presently under mineral lease on March 14, 2007, situated in Bossier and Caddo Parishes, Louisiana, and more particularly described as follows: Beginning at a point having Coordinates of X = 1,600,500.00 and Y = 716,700.00; thence North 10,700.00 feet to a point having Coordinates of X = 1,600,500.00 and Y = 727,400.00; thence East 8,000.00 feet to a point having Coordinates of X = 1,608,500.00 and Y = 727,400.00; thence South 53 degrees 07 minutes 48 seconds East 1,000.00 feet to a point having Coordinates of X = 1,609,300.00 and Y = 726,800.00; thence East 3,800.00 feet to a point having Coordinates of X = 1,613,100.00 and Y = 726,800.00; thence South approximately 4,892 feet to a point on the North line of Section 13, Township 19 North, Range 14 West; thence Westerly approximately 2,981 feet along the North line of said Section 13 to the Northeast corner of State Lease No. 2066, as amended; thence Westerly approximately 1,488 feet along the North line of said State Lease No. 2066, as amended, to its Northwest corner, said corner being a point on the North line of said Section 13; thence Westerly approximately 807 feet along the North line of said Section 13 to its Northwest corner; thence Southerly approximately 1,753 feet along the West line of said Section 13 to the mean low water mark of Gold Point Lake; thence along the mean low water mark of Gold Point Lake, the following courses: Easterly, Southeasterly, and Southerly approximately 2,621 feet to a point of intersection with an East West line having a Coordinate of Y = 716,700.00; thence West approximately 9,261 feet to the Point of Beginning, **LESS AND EXCEPT** any portion of Section 13, Township 19 North, Range 14 West, and/or State Lease No. 2066, as amended, that may lie within the above described tract, containing approximately **401 acres**, all as more particularly outlined on a plat on file in the Office of Mineral Resources, Department of Natural Resources. All bearings, distances and coordinates are based on Louisiana Coordinate System of 1927, (North or South Zone), where applicable.

NOTE: The above description of the Tract nominated for lease has been provided and corrected, where required, exclusively by the nomination party. Any mineral lease selected from this Tract and awarded by the Louisiana State Mineral Board shall be without warranty of any kind, either express, implied, or statutory, including, but not limited to, the implied warranties of merchantability and fitness for a particular purpose. Should the mineral lease awarded by the Louisiana State Mineral Board be subsequently modified, cancelled or abrogated due to the existence of conflicting leases, operating agreements, private claims or other future obligations or conditions which may affect all or any portion of the leased Tract, it shall not relieve the Lessee of the obligation to pay any bonus due thereon to the Louisiana State Mineral Board, nor shall the Louisiana State Mineral Board be obligated to refund any consideration

paid by the Lessor prior to such modification, cancellation, or abrogation, including, but not limited to, bonuses, rentals and royalties.

Applicant: TODD M. BERGERON

Bidder	Cash Payment	Price/Acre	Rental	Oil	Gas	Other

Legend
07030040
Active_Leases
Counties
DOQQ2004

BOSSIER PARISH

T19N - R13W

RED RIVER

SL 2066

CADDO PARISH

T19N - R14W



SL 19147

P.O.B.

TRACT 38919 - Caddo Parish, Louisiana

All of the lands now or formerly constituting the beds and bottoms of all water bodies of every nature and description the title of which vests in the State of Louisiana, together with all islands arising therein and other lands formed by accretion or by reliction, where allowed by law, excepting tax adjudicated lands, and not presently under mineral lease on March 14, 2007, situated in Caddo Parish, Louisiana, and more particularly described as follows: Beginning at a point having Coordinates of: X = 1,585,914.93 and Y = 717,609.69; thence East 5,412.06 feet to a point having Coordinates X = 1,591,326.99 Y = 717,609.69; thence South 5,762.32 feet to a point having Coordinates X = 1,591,326.99 Y = 711,847.37; thence West 5,412.06 feet to a point having Coordinates of: X = 1,585,914.93 and Y = 711,847.37; thence North 5,762.32 feet to the point of beginning, containing approximately **50 acres**, all as more particularly outlined on a plat on file in the Office of Mineral Resources, Department of Natural Resources. All bearings, distances and coordinates are based on Louisiana Coordinate System of 1927, (North or South Zone), where applicable.

NOTE: The above description of the Tract nominated for lease has been provided and corrected, where required, exclusively by the nomination party. Any mineral lease selected from this Tract and awarded by the Louisiana State Mineral Board shall be without warranty of any kind, either express, implied, or statutory, including, but not limited to, the implied warranties of merchantability and fitness for a particular purpose. Should the mineral lease awarded by the Louisiana State Mineral Board be subsequently modified, cancelled or abrogated due to the existence of conflicting leases, operating agreements, private claims or other future obligations or conditions which may affect all or any portion of the leased Tract, it shall not relieve the Lessee of the obligation to pay any bonus due thereon to the Louisiana State Mineral Board, nor shall the Louisiana State Mineral Board be obligated to refund any consideration paid by the Lessor prior to such modification, cancellation, or abrogation, including, but not limited to, bonuses, rentals and royalties.

Applicant: NADEL AND GUSSMAN-JETTA OPERATING COMPANY

Bidder	Cash Payment	Price/Acre	Rental	Oil	Gas	Other

CADDO PARISH

T19N - R14W

P.O.B.

TWELVE MILE BAYOU

T19N - R15W



TRACT 38920 - Calcasieu and Jefferson Davis Parishes, Louisiana

All of the lands now or formerly constituting the beds and bottoms of all water bodies of every nature and description the title of which vests in the State of Louisiana, together with all islands arising therein and other lands formed by accretion or by reliction, where allowed by law, excepting tax adjudicated lands, and not presently under mineral lease on March 14, 2007, situated in Calcasieu and Jefferson Davis Parishes, Louisiana, and more particularly described as follows: Beginning at a point having Coordinates of X = 1,436,390.28 and Y = 618,560.01; thence North 18,480.00 feet to a point having Coordinates of X = 1,436,390.28 and Y = 637,040.01; thence East 18,480.00 feet to a point having Coordinates of X = 1,454,870.28 and Y = 637,040.01; thence South 18,480.00 feet to a point having Coordinates of X = 1,454,870.28 and Y = 618,560.01; thence West 18,480.00 feet to the point of beginning; containing approximately **136 acres**, all as more particularly outlined on a plat on file in the Office of Mineral Resources, Department of Natural Resources. All bearings, distances and coordinates are based on Louisiana Coordinate System of 1927, (North or South Zone), where applicable.

NOTE: The above description of the Tract nominated for lease has been provided and corrected, where required, exclusively by the nomination party. Any mineral lease selected from this Tract and awarded by the Louisiana State Mineral Board shall be without warranty of any kind, either express, implied, or statutory, including, but not limited to, the implied warranties of merchantability and fitness for a particular purpose. Should the mineral lease awarded by the Louisiana State Mineral Board be subsequently modified, cancelled or abrogated due to the existence of conflicting leases, operating agreements, private claims or other future obligations or conditions which may affect all or any portion of the leased Tract, it shall not relieve the Lessee of the obligation to pay any bonus due thereon to the Louisiana State Mineral Board, nor shall the Louisiana State Mineral Board be obligated to refund any consideration paid by the Lessor prior to such modification, cancellation, or abrogation, including, but not limited to, bonuses, rentals and royalties.

NOTE: The above Tract is located upon a restricted scenic river and all operations in this area must be conducted in strict conformity with the regulations of the Corps of Engineers, U.S. Army.

Applicant: ALJ ENERGY

Bidder	Cash Payment	Price/Acre	Rental	Oil	Gas	Other

Legend
07030002
Counties
DOQQ2004

JEFFERSON DAVIS PARISH

T7S - R7W

CALCASIEU PARISH

T8S - R7W

CALCASIEU RIVER

P.O.B.



TRACT 38921 - Calcasieu Parish, Louisiana

All of the lands now or formerly constituting the beds and bottoms of all water bodies of every nature and description the title of which vests in the State of Louisiana, together with all islands arising therein and other lands formed by accretion or by reliction, where allowed by law, excepting tax adjudicated lands, and not presently under mineral lease on March 14, 2007, situated in Calcasieu Parish, Louisiana, and more particularly described as follows: Beginning at the Northwest corner of State Lease No. 18559 having Coordinates of X = 1,436,390.28 and Y = 610,193.73; thence North 8,366.28 feet to a point having Coordinates of X = 1,436,390.28 and Y = 618,560.01; thence East 18,480.00 feet to a point having Coordinates of X = 1,454,870.28 and Y = 618,560.01; thence South 17,160.01 feet to a point having Coordinates of X = 1,454,870.28 and Y = 601,400.00; thence West 6,570.28 feet to the Southeast corner of State Lease No. 19102 having Coordinates of X = 1,448,300.00 and Y = 601,400.00; thence along said State Lease No. 19102 the following courses: North 4,600.00 feet to a point having Coordinates of X = 1,448,300.00 and Y = 606,000.00 and West 5,307.20 feet to a point on the East boundary of said State Lease No. 18559 having Coordinates of X = 1,442,992.80 and Y = 606,000.00; thence along the boundary of said State Lease No. 18559 the following courses: North 00 degrees 58 minutes 17 seconds East 4,194.33 feet to a point having Coordinates of X = 1,443,063.92 and Y = 610,193.73 and West 6,673.64 feet to the point of beginning; containing approximately **123 acres**, all as more particularly outlined on a plat on file in the Office of Mineral Resources, Department of Natural Resources. All bearings, distances and coordinates are based on Louisiana Coordinate System of 1927, (North or South Zone), where applicable.

NOTE: The above description of the Tract nominated for lease has been provided and corrected, where required, exclusively by the nomination party. Any mineral lease selected from this Tract and awarded by the Louisiana State Mineral Board shall be without warranty of any kind, either express, implied, or statutory, including, but not limited to, the implied warranties of merchantability and fitness for a particular purpose. Should the mineral lease awarded by the Louisiana State Mineral Board be subsequently modified, cancelled or abrogated due to the existence of conflicting leases, operating agreements, private claims or other future obligations or conditions which may affect all or any portion of the leased Tract, it shall not relieve the Lessee of the obligation to pay any bonus due thereon to the Louisiana State Mineral Board, nor shall the Louisiana State Mineral Board be obligated to refund any consideration paid by the Lessor prior to such modification, cancellation, or abrogation, including, but not limited to, bonuses, rentals and royalties.

NOTE: The above Tract is located upon a restricted scenic river and all operations in this area must be conducted in strict conformity with the regulations of the Corps of Engineers, U.S. Army.

Applicant: ALJ ENERGY

Bidder	Cash Payment	Price/Acre	Rental	Oil	Gas	Other

Legend
07030001
Active_Leases
DOQQ2004

BAYOU SERPENT

CALCASIEU PARISH

T8S - R7W

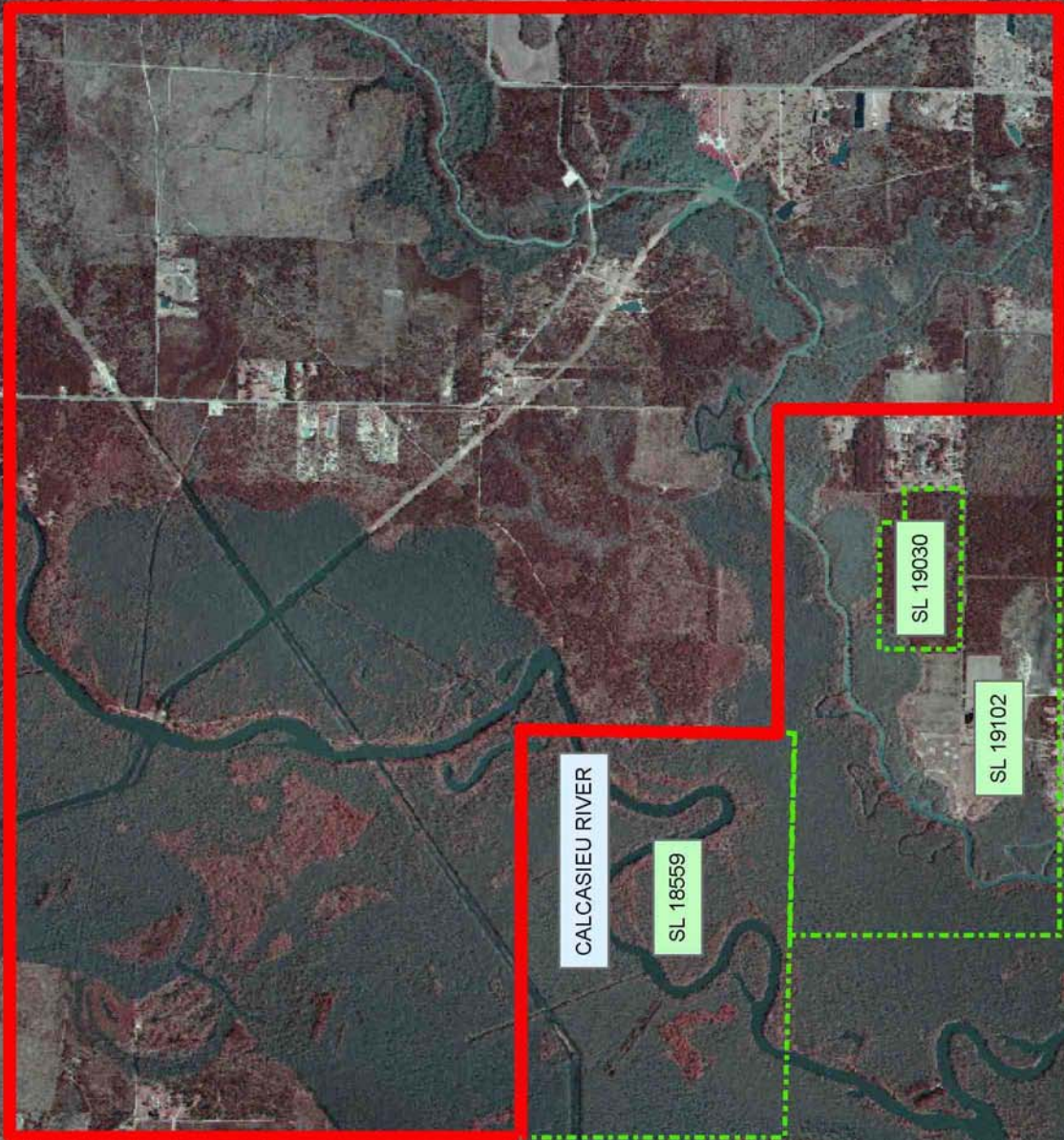
SL 19030

SL 19102

CALCASIEU RIVER

SL 18559

P.O.B.



TRACT 38922 - Portion of Block 68, Chandeleur Sound Area, St. Bernard Parish, Louisiana

All of the lands now or formerly constituting the beds and bottoms of all water bodies of every nature and description the title of which vests in the State of Louisiana, together with all islands arising therein and other lands formed by accretion or by reliction, where allowed by law, excepting tax adjudicated lands, and not presently under mineral lease on March 14, 2007, situated in St. Bernard Parish, Louisiana, and more particularly described as follows: Beginning at a point on the North line of Block 68, Chandeleur Sound Area, having Coordinates of X = 2,657,475.00 and Y = 396,080.00; thence East 6,130.00 feet along the North line of said Block 68 to the Northwest corner of State Lease No. 18793 having Coordinates of X = 2,663,605.00 and Y = 396,080.00; thence along the boundary of said State Lease No. 18793 the following courses: South 33 degrees 10 minutes 43 seconds West 5,436.28 feet to its Southwest corner having Coordinates of X = 2,660,630.00 and Y = 391,530.00 and East 4,220.00 feet to a point on the East line of said Block 68 having Coordinates of X = 2,664,850.00 and Y = 391,530.00; thence South 10,200.00 feet along the East line of said Block 68 to its Southeast corner having Coordinates of X = 2,664,850.00 and Y = 381,330.00; thence West 7,375.00 feet along the South line of said Block 68 to a point having Coordinates of X = 2,657,475.00 and Y = 381,330.00; thence North 14,750.00 feet to the point of beginning, containing approximately **2,211.85 acres**, all as more particularly outlined on a plat on file in the Office of Mineral Resources, Department of Natural Resources. All bearings, distances and coordinates are based on Louisiana Coordinate System of 1927, (North or South Zone), where applicable.

NOTE: The above description of the Tract nominated for lease has been provided and corrected, where required, exclusively by the nomination party. Any mineral lease selected from this Tract and awarded by the Louisiana State Mineral Board shall be without warranty of any kind, either express, implied, or statutory, including, but not limited to, the implied warranties of merchantability and fitness for a particular purpose. Should the mineral lease awarded by the Louisiana State Mineral Board be subsequently modified, cancelled or abrogated due to the existence of conflicting leases, operating agreements, private claims or other future obligations or conditions which may affect all or any portion of the leased Tract, it shall not relieve the Lessee of the obligation to pay any bonus due thereon to the Louisiana State Mineral Board, nor shall the Louisiana State Mineral Board be obligated to refund any consideration paid by the Lessor prior to such modification, cancellation, or abrogation, including, but not limited to, bonuses, rentals and royalties.

NOTE: The Office of Mineral Resources will require a minimum bonus of \$190 per acre and a minimum royalty of 22%.




NOTE: The State of Louisiana does hereby reserve, and this lease shall be subject to, the imprescriptible right of surface use in the nature of a

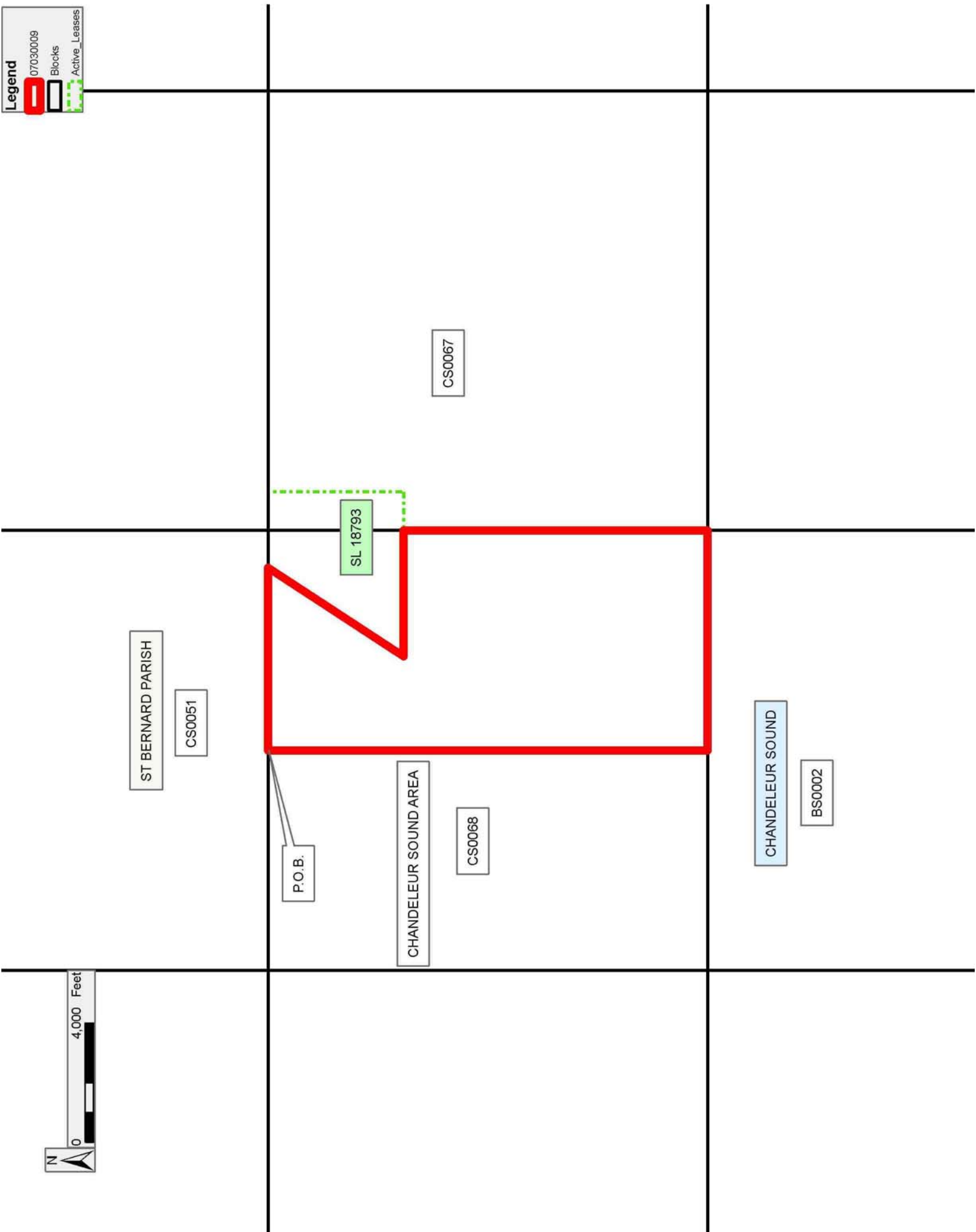
servitude in favor of the Department of Natural Resources, including its Offices and Commissions, for the sole purpose of implementing, constructing, servicing and maintaining approved coastal zone management and/or restoration projects. Utilization of any and all rights derived under this lease by the mineral lessee, its agents, successors or assigns, shall not interfere with nor hinder the reasonable surface use by the Department of Natural Resources, its Offices or Commissions, as herein above reserved.

Applicant: LOUISIANA MINERALS MANAGEMENT

Bidder	Cash Payment	Price/Acre	Rental	Oil	Gas	Other

Legend

-  07030009
-  Blocks
-  Active_Leases



TRACT 38923 - Portion of Block 67, Chandeleur Sound Area, St. Bernard Parish, Louisiana

All of the lands now or formerly constituting the beds and bottoms of all water bodies of every nature and description the title of which vests in the State of Louisiana, together with all islands arising therein and other lands formed by accretion or by reliction, where allowed by law, excepting tax adjudicated lands, and not presently under mineral lease on March 14, 2007, situated in St. Bernard Parish, Louisiana, and more particularly described as follows: Beginning at a point on the North line of Block 67, Chandeleur Sound Area, having Coordinates of X = 2,672,225.00 and Y = 396,080.00; thence South 14,750.00 feet to a point on the South line of said Block 67 having Coordinates of X = 2,672,225.00 and Y = 381,330.00; thence West 7,375.00 feet along the South line of said Block 67 to its Southwest corner having Coordinates of X = 2,664,850.00 and Y = 381,330.00; thence North 10,200.00 feet along the West line of said Block 67 to a point on the South boundary of State Lease No. 18793 having Coordinates of X = 2,664,850.00 and Y = 391,530.00; thence along the boundary of said State Lease No. 18793 the following courses: East 1,300.00 feet to its Southeast corner having Coordinates of X = 2,666,150.00 and Y = 391,530.00 and North 4,550.00 feet to its Northeast corner, also being a point on the North line of said Block 67 having Coordinates of X = 2,666,150.00 and Y = 396,080.00; thence East 6,075.00 feet along the North line said Block 67 to the point of beginning, containing approximately **2,361.48 acres**, all as more particularly outlined on a plat on file in the Office of Mineral Resources, Department of Natural Resources. All bearings, distances and coordinates are based on Louisiana Coordinate System of 1927, (North or South Zone), where applicable.

NOTE: The above description of the Tract nominated for lease has been provided and corrected, where required, exclusively by the nomination party. Any mineral lease selected from this Tract and awarded by the Louisiana State Mineral Board shall be without warranty of any kind, either express, implied, or statutory, including, but not limited to, the implied warranties of merchantability and fitness for a particular purpose. Should the mineral lease awarded by the Louisiana State Mineral Board be subsequently modified, cancelled or abrogated due to the existence of conflicting leases, operating agreements, private claims or other future obligations or conditions which may affect all or any portion of the leased Tract, it shall not relieve the Lessee of the obligation to pay any bonus due thereon to the Louisiana State Mineral Board, nor shall the Louisiana State Mineral Board be obligated to refund any consideration paid by the Lessor prior to such modification, cancellation, or abrogation, including, but not limited to, bonuses, rentals and royalties.

NOTE: The Office of Mineral Resources will require a minimum bonus of \$190 per acre and a minimum royalty of 22%.

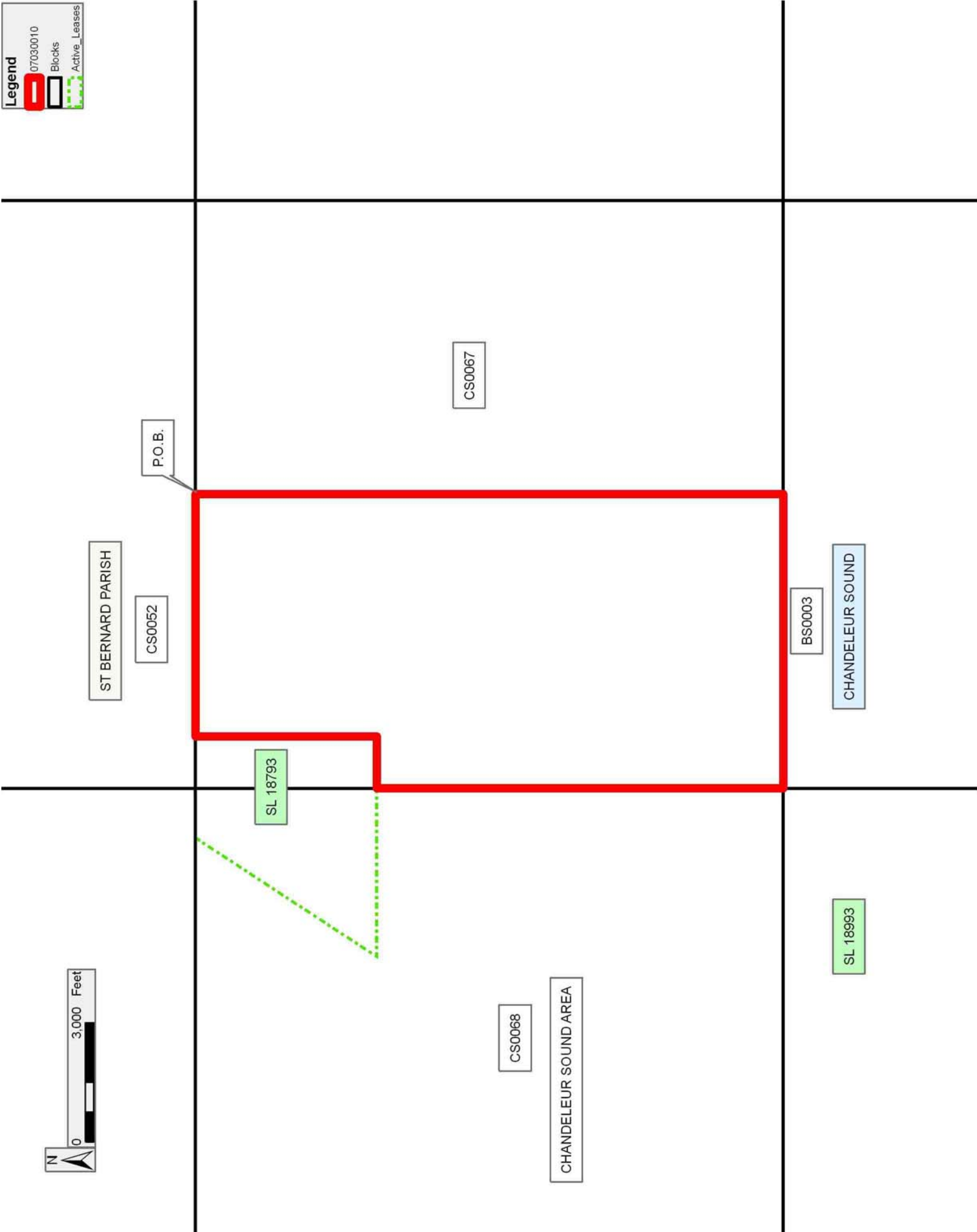
NOTE: The State of Louisiana does hereby reserve, and this lease shall be subject to, the imprescriptible right of surface use in the nature of a servitude in favor of the Department of Natural Resources, including its Offices and Commissions, for the sole purpose of implementing, constructing, servicing and maintaining approved coastal zone management and/or restoration projects. Utilization of any and all rights derived under this lease by the mineral lessee, its agents, successors or assigns, shall not interfere with nor hinder the reasonable surface use by the Department of Natural Resources, its Offices or Commissions, as herein above reserved.

Applicant: LOUISIANA MINERALS MANAGEMENT

Bidder	Cash Payment	Price/Acre	Rental	Oil	Gas	Other

Legend

- 07030010
- Blocks
- Active_Leases



TRACT 38924 - Portion of Block 21, Main Pass Area, Revised, Plaquemines Parish, Louisiana

All of the lands now or formerly constituting the beds and bottoms of all water bodies of every nature and description the title of which vests in the State of Louisiana, together with all islands arising therein and other lands formed by accretion or by reliction, where allowed by law, excepting tax adjudicated lands, and not presently under mineral lease on March 14, 2007, situated in Plaquemines Parish, Louisiana, and more particularly described as follows: Beginning at the Northwest corner of Block 21, Main Pass Area, Revised, having Coordinates of X = 2,620,600.00 and Y = 337,080.00; thence East 7,375.00 feet along the North line of said Block 21 to a point having Coordinates of X = 2,627,975.00 and Y = 337,080.00; thence South 14,750.00 feet to a point on the South line of said Block 21 having Coordinates of X = 2,627,975.00 and Y = 322,330.00; thence West 7,375.00 feet along the South line of said Block 21 to its Southwest corner having Coordinates of X = 2,620,600.00 and Y = 322,330.00; thence North 14,750.00 feet along the West line of said Block 21 to the point of beginning, containing approximately **2,497.27 acres**, all as more particularly outlined on a plat on file in the Office of Mineral Resources, Department of Natural Resources. All bearings, distances and coordinates are based on Louisiana Coordinate System of 1927, (North or South Zone), where applicable.

NOTE: The above description of the Tract nominated for lease has been provided and corrected, where required, exclusively by the nomination party. Any mineral lease selected from this Tract and awarded by the Louisiana State Mineral Board shall be without warranty of any kind, either express, implied, or statutory, including, but not limited to, the implied warranties of merchantability and fitness for a particular purpose. Should the mineral lease awarded by the Louisiana State Mineral Board be subsequently modified, cancelled or abrogated due to the existence of conflicting leases, operating agreements, private claims or other future obligations or conditions which may affect all or any portion of the leased Tract, it shall not relieve the Lessee of the obligation to pay any bonus due thereon to the Louisiana State Mineral Board, nor shall the Louisiana State Mineral Board be obligated to refund any consideration paid by the Lessor prior to such modification, cancellation, or abrogation, including, but not limited to, bonuses, rentals and royalties.

NOTE: The State of Louisiana does hereby reserve, and this lease shall be subject to, the imprescriptible right of surface use in the nature of a servitude in favor of the Department of Natural Resources, including its Offices and Commissions, for the sole purpose of implementing, constructing, servicing and maintaining approved coastal zone management and/or restoration projects. Utilization of any and all rights derived under this lease by the mineral lessee, its agents, successors or assigns, shall not interfere with nor hinder the reasonable surface use by the Department of Natural Resources, its Offices or Commissions, as herein above reserved.

Applicant: LOUISIANA MINERALS MANAGEMENT

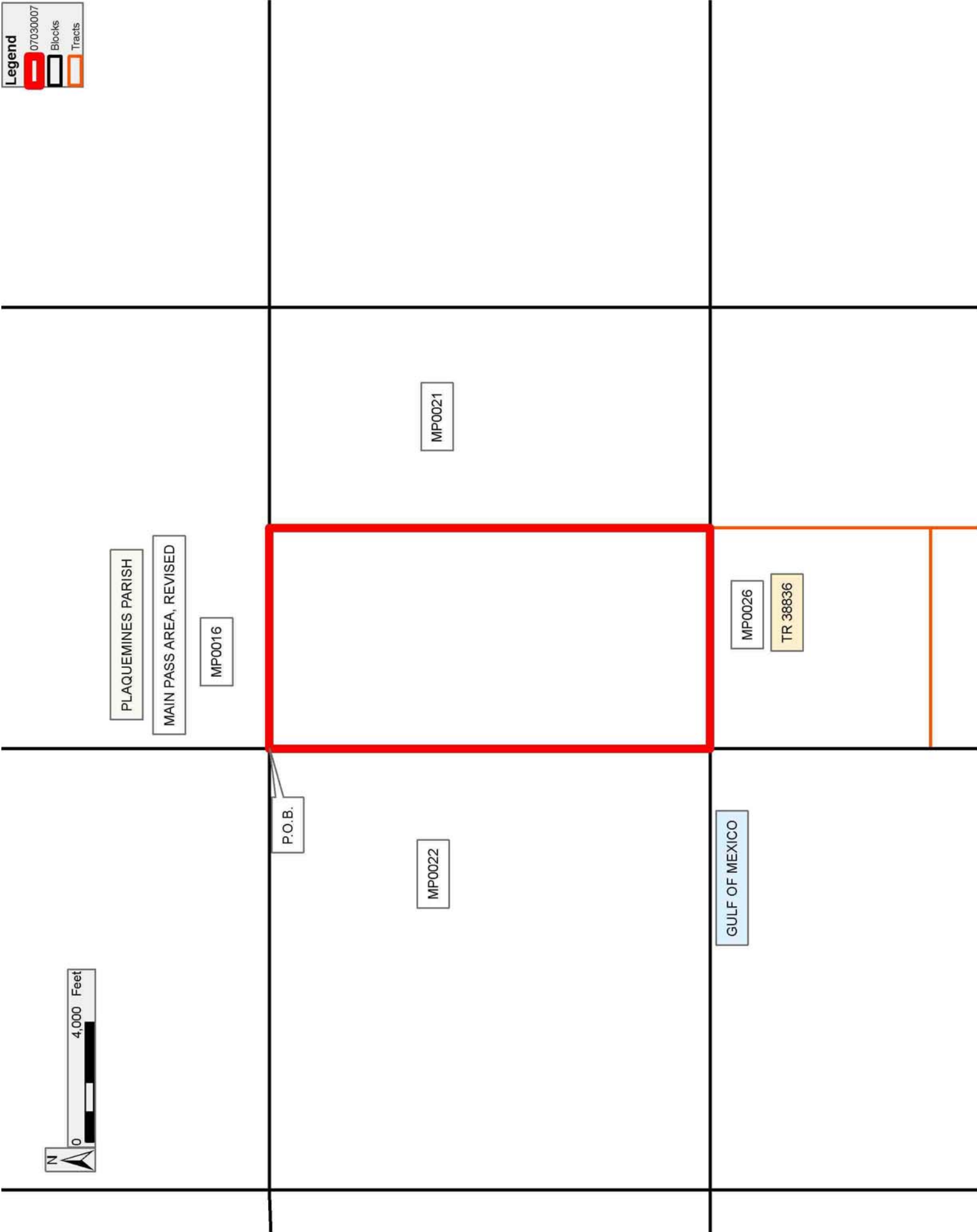
Bidder	Cash Payment	Price/Acre	Rental	Oil	Gas	Other

Legend

07030007

Blocks

Tracts



PLAQUEMINES PARISH

MAIN PASS AREA, REVISED

MP0016

MP0021

MP0026

TR 38836

P.O.B.

MP0022

GULF OF MEXICO

