

**TRACT 38912 - Portion of Block 10, West Cameron Area, Revised, Cameron Parish, Louisiana**

The beds and bottoms of all water bodies belonging to the State of Louisiana located in Block 10, West Cameron Area, Revised, together with any present lands formed by accretion to the shoreline or islands formed therein, located in Cameron Parish, Louisiana, owned by and not presently under mineral lease as of March 14, 2007, from the State of Louisiana, the geographical area of which is more fully described as follows: Beginning at a point on the West line of Block 10, West Cameron Area, Revised, being the Northernmost corner of State Lease No. 18362, also being the Southwest corner of State Lease No. 18801 having Coordinates of X = 1,288,145.38 and Y = 401,169.27; thence East 5,500.00 feet along the South boundary of said State Lease No. 18801 to its Southeast corner having Coordinates X = 1,293,645.38 and Y = 401,169.27; thence South 45 degrees 04 minutes 25 seconds East 8,452.68 feet to a point on the North boundary of State Lease No. 18355 having Coordinates of X = 1,299,630.00 and Y = 395,200.00; thence West 3,120.00 feet along the North boundary of said State Lease No. 18355 to its Northwest corner having Coordinates of X = 1,296,510.00 and Y = 395,200.00; thence West 3,380.00 feet to the Southernmost corner of said State Lease No. 18362 having Coordinates of X = 1,293,130.00 and Y = 395,200.00; thence North 39 degrees 51 minutes 49 seconds West 7,776.80 feet along the boundary of said State Lease No. 18362 to the point of beginning, containing approximately **822.21 acres**, all as more particularly outlined on a plat on file in the Office of Mineral Resources, Department of Natural Resources. All bearings, distances and coordinates are based on Louisiana Coordinate System of 1927, (North or South Zone).

NOTE: The above description of the Tract nominated for lease has been provided and corrected, where required, exclusively by the nomination party. Any mineral lease selected from this Tract and awarded by the Louisiana State Mineral Board shall be without warranty of any kind, either express, implied, or statutory, including, but not limited to, the implied warranties of merchantability and fitness for a particular purpose. Should the mineral lease awarded by the Louisiana State Mineral Board be subsequently modified, cancelled or abrogated due to the existence of conflicting leases, operating agreements, private claims or other future obligations or conditions which may affect all or any portion of the leased Tract, it shall not relieve the Lessee of the obligation to pay any bonus due thereon to the Louisiana State Mineral Board, nor shall the Louisiana State Mineral Board be obligated to refund any consideration paid by the Lessor prior to such modification, cancellation, or abrogation, including, but not limited to, bonuses, rentals and royalties.

NOTE: The State of Louisiana does hereby reserve, and this lease shall be subject to, the imprescriptible right of surface use in the nature of a servitude in favor of the Department of Natural Resources, including its Offices and Commissions, for the sole purpose of implementing, constructing, servicing and maintaining approved coastal zone management and/or restoration projects. Utilization of any and all rights derived

under this lease by the mineral lessee, its agents, successors or assigns, shall not interfere with nor hinder the reasonable surface use by the Department of Natural Resources, its Offices or Commissions, as herein above reserved.

Applicant: PATRICK L. DONOHUE PETROLEUM PROPERTIES, INC.

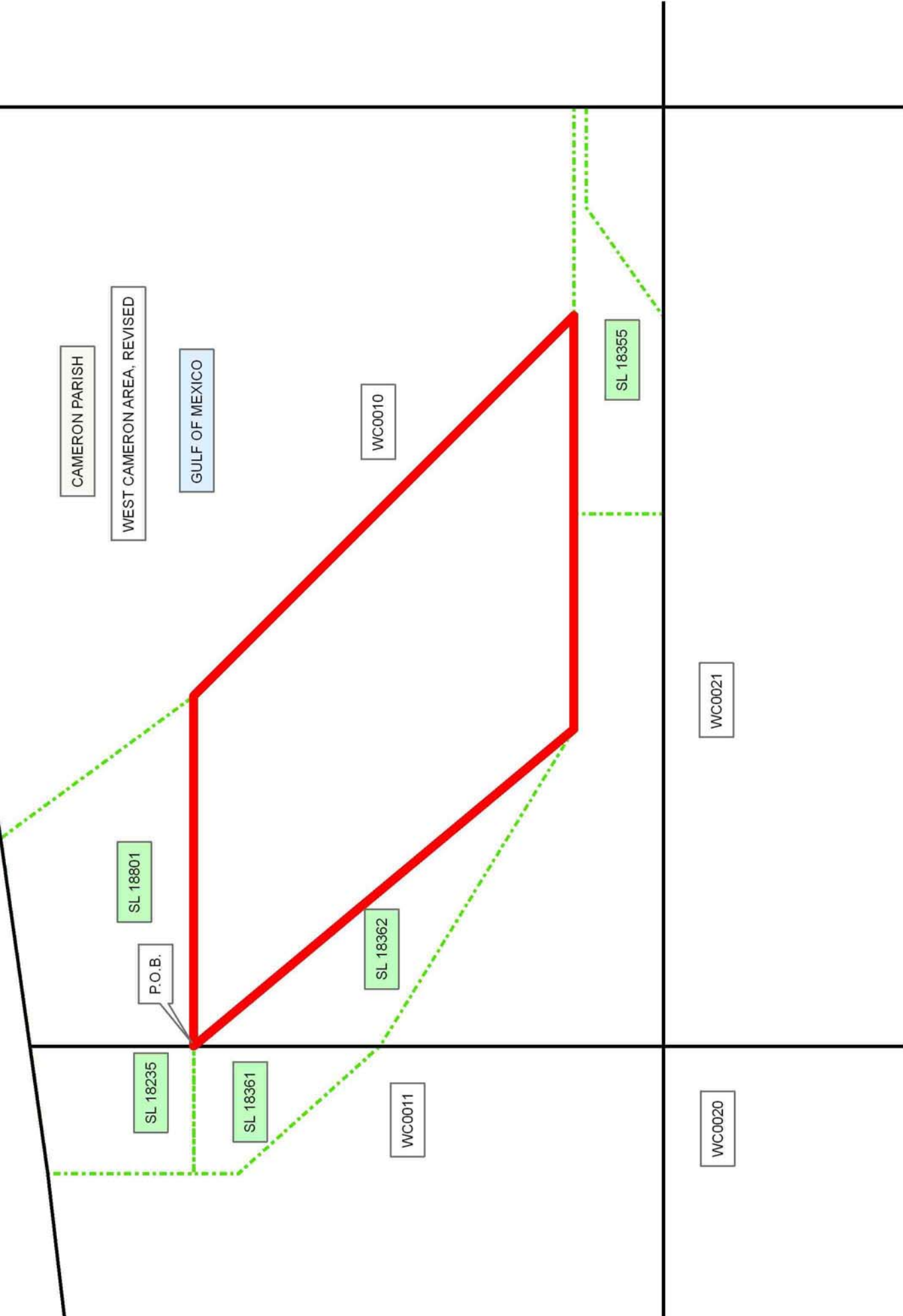
Bidder	Cash Payment	Price/ Acre	Rental	Oil	Gas	Other

**Legend**

07030005

Blocks

Active\_Leases



**TRACT 38913 - Portion of Block 2, East Cameron Area, Revised, Cameron Parish, Louisiana**

The beds and bottoms of all water bodies belonging to the State of Louisiana located in Block 2, East Cameron Area, Revised, together with any present lands formed by accretion to the shoreline or islands formed therein, located in Cameron Parish, Louisiana, owned by and not presently under mineral lease as of March 14, 2007, from the State of Louisiana, the geographical area of which is more fully described as follows: Beginning at a point on the North line of Block 2, East Cameron Area, Revised, also being the Northwest corner of State Lease No. 18121 having Coordinates of X = 1,471,141.95 and Y = 374,758.05; thence South 43 degrees 52 minutes 01 seconds West 5,388.18 feet along the Western boundary of said State Lease No. 18121 to its Southwest corner having Coordinates of X = 1,467,408.01 and Y = 370,873.44; thence South 43 degrees 52 minutes 01 seconds West 1,579.02 feet to a point on the Three Mile Line, as decreed by the Supreme Court of the United States, as determined by a Special Master appointed therein, in litigation styled *United States v. State of Louisiana et al No. 9 Original*, in 1975, having Coordinates of X = 1,466,313.77 and Y = 369,735.05; thence Northwesterly on a straight line, along said Three Mile Line, to a point on the West line of said Block 2 having Coordinates of X = 1,465,241.95 and Y = 370,151.82; thence North 1,563.69 feet along the West line of said Block 2 to the Southwest corner of State Lease No. 16475, as amended, having Coordinates of X = 1,465,241.95 and Y = 371,715.51; thence along the boundary of said State Lease No. 16475 the following courses: North 71 degrees 04 minutes 03 seconds East 124.79 feet to a point having Coordinates of X = 1,465,359.99 and Y = 371,756.00; North 66 degrees 01 minutes 07 seconds East 307.55 feet to a point having Coordinates of X = 1,465,640.99 and Y = 371,881.00; North 56 degrees 59 minutes 15 seconds East 211.08 feet to a point having Coordinates of X = 1,465,817.99 and Y = 371,996.00; North 46 degrees 39 minutes 45 seconds East 268.11 feet to a point having Coordinates of X = 1,466,012.99 and Y = 372,180.00; North 35 degrees 17 minutes 12 seconds East 238.89 feet to a point having Coordinates of X = 1,466,150.99 and Y = 372,375.00; North 34 degrees 50 minutes 53 seconds East 260.76 feet to a point having Coordinates of X = 1,466,299.99 and Y = 372,589.00; North 36 degrees 08 minutes 17 seconds East 266.22 feet to a point having Coordinates of X = 1,466,456.99 and Y = 372,804.00; North 44 degrees 21 minutes 57 seconds East 191.64 feet to a point having Coordinates of X = 1,466,590.99 and Y = 372,941.00; North 57 degrees 30 minutes 37 seconds East 238.30 feet to a point having Coordinates of X = 1,466,791.99 and Y = 373,069.00; North 72 degrees 33 minutes 10 seconds East 256.82 feet to a point having Coordinates of X = 1,467,037.00 and Y = 373,146.00; North 72 degrees 38 minutes 46 seconds East 268.21 feet to a point having Coordinates of X = 1,467,293.00 and Y = 373,226.00; North 62 degrees 45 minutes 18 seconds East 301.44 feet to a point having Coordinates of X = 1,467,561.00 and Y = 373,364.00; North 57 degrees 51 minutes 29 seconds East 34.20 feet to a point having Coordinates of X = 1,467,589.96 and Y = 373,382.20; North 66 degrees 18 minutes 53 seconds East 208.62 feet to a point having Coordinates of X = 1,467,781.01 and Y = 373,466.00; North 60 degrees 01

minutes 06 seconds East 270.15 feet to a point having Coordinates of X = 1,468,015.01 and Y = 373,601.00; North 61 degrees 42 minutes 26 seconds East 489.47 feet to a point having Coordinates of X = 1,468,446.01 and Y = 373,833.00; North 40 degrees 12 minutes 56 seconds East 161.07 feet to a point having Coordinates of X = 1,468,550.00 and Y = 373,956.00; North 23 degrees 57 minutes 45 seconds East 187.13 feet to a point having Coordinates of X = 1,468,626.00 and Y = 374,127.00; North 12 degrees 43 minutes 58 seconds East 213.24 feet to a point having Coordinates of X = 1,468,673.00 and Y = 374,335.00; North 11 degrees 04 minutes 57 seconds West 197.69 feet to a point having Coordinates of X = 1,468,635.00 and Y = 374,529.00; North 19 degrees 36 minutes 15 seconds West 154.98 feet to a point having Coordinates of X = 1,468,583.00 and Y = 374,675.00; North 32 degrees 46 minutes 45 seconds West 8.75 feet to a point having Coordinates of X = 1,468,578.27 and Y = 374,682.35 and North 20 degrees 17 minutes 51 seconds West 80.71 feet to the Northeast corner of said State Lease No. 16475, also being a point on the North line of said Block 2 having Coordinates of X = 1,468,550.27 and Y = 374,758.05; thence East 2,591.68 feet along the North line of said Block 2 to the point of beginning, containing approximately **254.76 acres, LESS AND EXCEPT** that portion thereof, if any, lying seaward of the line three nautical miles from the coast line of Louisiana, as said three mile line has been decreed by the Supreme Court of the United States, as determined by a Special Master appointed therein, in litigation styled **United States v. State of Louisiana et al No. 9 Original**, in 1975, all as more particularly outlined on a plat in the Office of Mineral Resources, Department of Natural Resources. All bearings, distances and coordinates are based on the Louisiana Coordinate System of 1927, (South Zone).

NOTE: The above description of the Tract nominated for lease has been provided and corrected, where required, exclusively by the nomination party. Any mineral lease selected from this Tract and awarded by the Louisiana State Mineral Board shall be without warranty of any kind, either express, implied, or statutory, including, but not limited to, the implied warranties of merchantability and fitness for a particular purpose. Should the mineral lease awarded by the Louisiana State Mineral Board be subsequently modified, cancelled or abrogated due to the existence of conflicting leases, operating agreements, private claims or other future obligations or conditions which may affect all or any portion of the leased Tract, it shall not relieve the Lessee of the obligation to pay any bonus due thereon to the Louisiana State Mineral Board, nor shall the Louisiana State Mineral Board be obligated to refund any consideration paid by the Lessor prior to such modification, cancellation, or abrogation, including, but not limited to, bonuses, rentals and royalties.

NOTE: The State of Louisiana does hereby reserve, and this lease shall be subject to, the imprescriptible right of surface use in the nature of a servitude in favor of the Department of Natural Resources, including its Offices and Commissions, for the sole purpose of implementing, constructing, servicing and maintaining approved coastal zone management

and/or restoration projects. Utilization of any and all rights derived under this lease by the mineral lessee, its agents, successors or assigns, shall not interfere with nor hinder the reasonable surface use by the Department of Natural Resources, its Offices or Commissions, as herein above reserved.

Applicant: THEOPHILUS OIL GAS & LAND SERVICES LLC

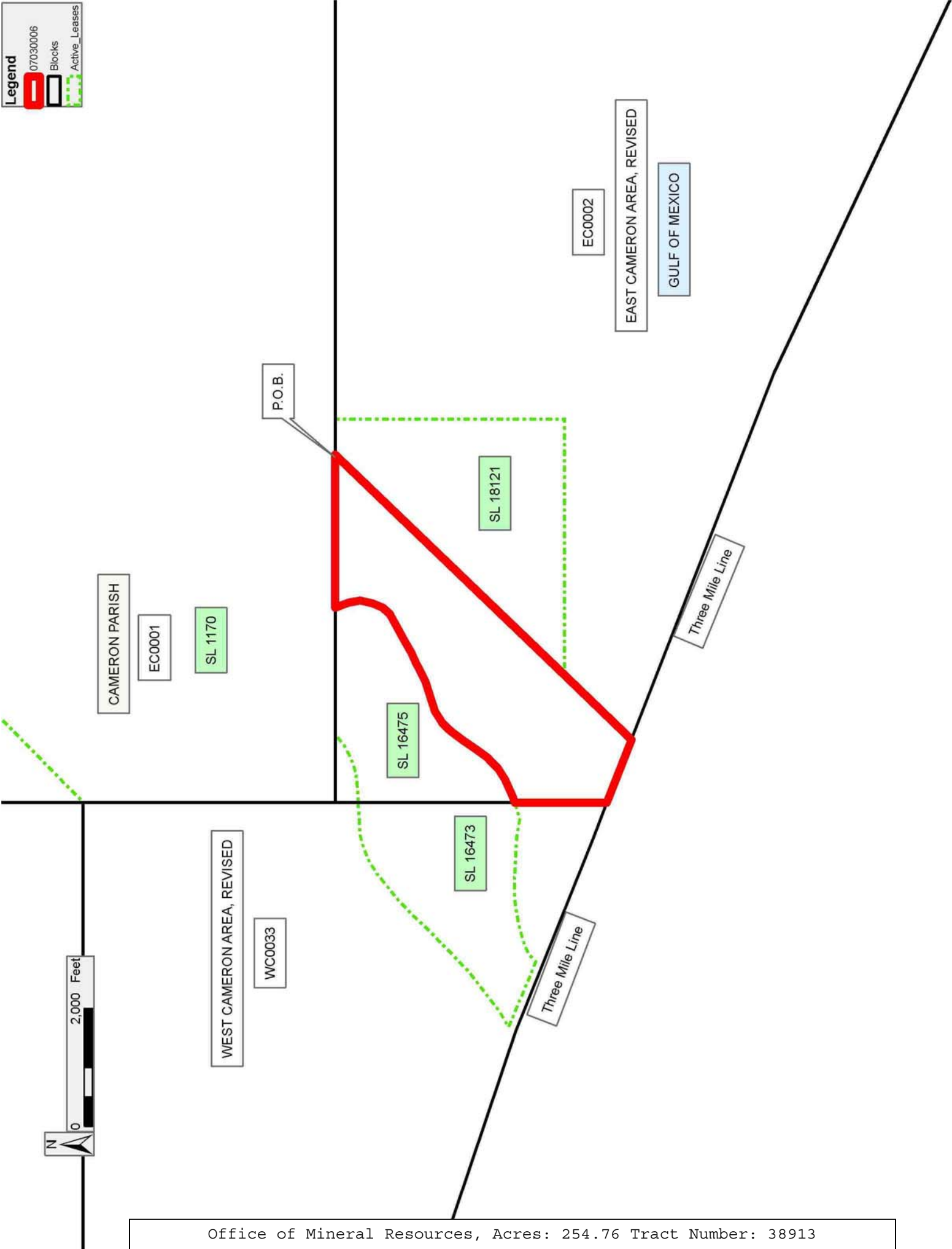
Bidder	Cash Payment	Price/ Acre	Rental	Oil	Gas	Other

Legend

07030006

Blocks

Active\_Leases



**TRACT 38914 - Portion of Block 12, South Timbalier Area, Revised, Terrebonne Parish, Louisiana**

The beds and bottoms of all water bodies belonging to the State of Louisiana located in Block 12, South Timbalier Area, Revised, together with any present lands formed by accretion to the shoreline or islands formed therein, located in Terrebonne Parish, Louisiana, owned by and not presently under mineral lease as of March 14, 2007, from the State of Louisiana, the geographical area of which is more fully described as follows: Beginning at a point having Coordinates of X = 2,275,580.02 and Y = 142,945.03 being a point on the Louisiana Coast Line as determined by the United States styled United States v. State of Louisiana et al No. 9 Original, set out in the June 1975 decree of the Supreme Court, also being the Northeast corner of Block 12, South Timbalier Area, Revised and also being the Northwest corner of Block 13, South Timbalier Area, Revised; thence South 3,200.00 feet on the East boundary of said Block 12, South Timbalier Area, Revised, also being the West boundary of said Block 13, South Timbalier Area, Revised to a point having Coordinates of X = 2,275,580.02 and Y = 139,745.03; thence West 2,500.00 feet to a point having Coordinates of X = 2,273,080.02 and Y = 139,745.03; thence South 1,995.03 feet to a point having Coordinates of X = 2,273,080.02 and Y = 137,750.00; thence West 8,634.00 feet to a point on the West boundary of said Block 12, South Timbalier Area, Revised, also being the East boundary of Block 11, South Timbalier Area, Revised, also being the East boundary of State Mineral Lease No. 16945 having Coordinates of X = 2,264,446.02 and Y = 137,750.00; thence North 1,290.45 feet on the West boundary of said Block 12, South Timbalier Area, Revised, also being the East boundary of said Block 11, South Timbalier Area, Revised, also being the East boundary of said State Mineral Lease No. 16945 to its Northeast corner having Coordinates of X = 2,264,446.02 and Y = 139,040.45; thence North 2,070.47 feet on the West boundary of said Block 12, South Timbalier Area, Revised also being the East boundary of Block 122, South Timbalier Area, Revised to a point on the East boundary of said Block 122, South Timbalier, Revised, also being a point on the East boundary of State Mineral Lease No. 15108 and also being the Southwest corner of State Mineral Lease No. 15110 having Coordinates of X = 2,264,446.02 and Y = 141,110.92; thence North 47 degrees 15 minutes 46 seconds East 1,061.94 feet on the Southeast boundary of said State Mineral Lease No. 15110 to a point having Coordinates of X = 2,265,225.99 and Y = 141,831.59; thence North 73 degrees 59 minutes 53 seconds West 393.90 feet on the Northern boundary of said State Mineral Lease No. 15110 to a point having Coordinates of X = 2,264,847.35 and Y = 141,940.18; thence North 69 degrees 57 minutes 29 seconds West 427.20 feet on the Northern boundary of said State Mineral Lease No. 15110 to its Northwest corner, also being a point on the East boundary of said Block 122, South Timbalier Area, Revised and also being a point on the West boundary of said Block 12 having Coordinates of X = 2,264,446.02 and Y = 142,086.58; thence North 3,388.42 feet to a point on the West boundary of said Block 12, South Timbalier Area, Revised also being the East boundary of said Block 122, South Timbalier Area, Revised also being the Southwest corner of State



Mineral Lease No. 1021 having Coordinates of X = 2,264,446.02 and Y = 145,475.00; thence South 68 degrees 21 minutes 41 seconds East 3,425.80 feet on the Southern boundary of said State Mineral Lease No. 1021 to the Northwest corner of State Mineral Lease No. 16529 having Coordinates of X = 2,267,630.40 and Y = 144,211.73; thence South 21 degrees 38 minutes 20 seconds West 1,510.08 feet on the Western boundary of said State Mineral Lease No. 16529 to its Southwest corner having Coordinates of X = 2,267,073.55 and Y = 142,808.07; thence South 68 degrees 21 minutes 41 seconds East 3,000.00 feet on the Southern boundary of said State Mineral Lease No. 16529 to its Southeast corner having Coordinates of X = 2,269,862.14 and Y = 141,701.82; thence North 21 degrees 38 minutes 18 seconds East 1,510.08 feet on the Eastern boundary of said State Mineral Lease No. 16529 to its Northeast corner also being a point on the Southern boundary of said State Mineral Lease No. 1021 having Coordinates of X = 2,270,418.98 and Y = 143,105.48; thence South 68 degrees 21 minutes 41 seconds East 625.06 feet on the Southern boundary of said State Mineral Lease No. 1021 to its Southeast corner having Coordinates of X = 2,271,000.00, and Y = 142,875.00; thence North 06 degrees 43 minutes 38 seconds East 1,801.13 feet on the Eastern boundary of said State Mineral Lease No. 1021 to a point on the said Louisiana Coast Line as determined by the United States styled United States v. State of Louisiana et al No. 9 Original, set out in the June 1975 decree of the Supreme Court having Coordinates of X = 2,271,210.98 and Y = 144,663.73; thence South 66 degrees 59 minutes 14 seconds East 3,843.92 feet on the said Louisiana Coast Line as determined by the United States styled United States v. State of Louisiana et al No. 9 Original, set out in the June 1975 decree of the Supreme Court to a point having Coordinates of X = 2,274,749.00 and Y = 143,161.00; thence South 75 degrees 25 minutes 55 seconds East 858.63 feet on the said Louisiana Coast Line as determined by the United States styled United States v. State of Louisiana et al No. 9 Original, set out in the June 1975 decree of the Supreme Court to the Point of Beginning, **LESS AND EXCEPT** that portion, if any, of said State Mineral Leases 1021, 16529, 15110, 15108 and 16945 which may lie within the above described tract, containing approximately **1,370.44 acres**, all as more particularly outlined on a plat on file in the Office of Mineral Resources, Department of Natural Resources. All bearings, distances and coordinates are based on Louisiana Coordinate System of 1927, (North or South Zone).

NOTE: The above description of the Tract nominated for lease has been provided and corrected, where required, exclusively by the nomination party. Any mineral lease selected from this Tract and awarded by the Louisiana State Mineral Board shall be without warranty of any kind, either express, implied, or statutory, including, but not limited to, the implied warranties of merchantability and fitness for a particular purpose. Should the mineral lease awarded by the Louisiana State Mineral Board be subsequently modified, cancelled or abrogated due to the existence of conflicting leases, operating agreements, private claims or other future obligations or conditions which may affect all or any portion of the leased Tract, it shall not relieve the Lessee of the obligation to

pay any bonus due thereon to the Louisiana State Mineral Board, nor shall the Louisiana State Mineral Board be obligated to refund any consideration paid by the Lessor prior to such modification, cancellation, or abrogation, including, but not limited to, bonuses, rentals and royalties.

NOTE: The State of Louisiana does hereby reserve, and this lease shall be subject to, the imprescriptible right of surface use in the nature of a servitude in favor of the Department of Natural Resources, including its Offices and Commissions, for the sole purpose of implementing, constructing, servicing and maintaining approved coastal zone management and/or restoration projects. Utilization of any and all rights derived under this lease by the mineral lessee, its agents, successors or assigns, shall not interfere with nor hinder the reasonable surface use by the Department of Natural Resources, its Offices or Commissions, as herein above reserved.

NOTE: The Department of Wildlife and Fisheries has designated certain areas in the coastal waters of the State of Louisiana as Oyster Seed Bed Areas. The exact location of those Seed Bed Areas must be obtained from the Department of Wildlife and Fisheries and any work done under a mineral lease from the State of Louisiana may necessarily be conducted in conformity with the rules and regulations promulgated by the said Department of Wildlife and Fisheries for Oyster Seed Bed Areas.

Applicant: LAND MANAGEMENT SERVICES, L.L.C.

Bidder	Cash Payment	Price/ Acre	Rental	Oil	Gas	Other

**Legend**

- 07030046
- Blocks
- Active\_Leases

