

**TRACT 38104 - Portion of Blocks 2, 3, and 4, West Cameron Area, Revised, Cameron Parish, Louisiana**

The beds and bottoms of all water bodies belonging to the State of Louisiana located in Blocks 2, 3, and 4, West Cameron Area, Revised, together with any present lands formed by accretion to the shoreline or islands formed therein, located in Cameron Parish, Louisiana, owned by and not presently under mineral lease as of March 8, 2006, from the State of Louisiana, the geographical area of which is more fully described as follows: Beginning at a point on the West line of Block 3, West Cameron Area, Revised, having Coordinates of X = 1,391,451.71 and Y = 402,000.00; thence North 7,240.45 feet along the West line of said Block 3 to its Northwest corner, said corner also being a point on the Coastline as per the Supreme Court Decree dated June 16, 1975, having Coordinates of X = 1,391,451.71 and Y = 409,240.45; thence along said Coastline the following courses: North 89 degrees 42 minutes 33 seconds East 502.29 feet to a point having Coordinates of X = 1,391,954.00 and Y = 409,243.00; South 36 degrees 08 minutes 07 seconds East 78.01 feet to a point having Coordinates of X = 1,392,000.00 and Y = 409,180.00; South 86 degrees 36 minutes 05 seconds East 3,606.34 feet to a point having Coordinates of X = 1,395,600.00 and Y = 408,966.21; South 86 degrees 36 minutes 05 seconds East 1,622.85 feet to a point having Coordinates of X = 1,397,220.00 and Y = 408,870.00; South 84 degrees 33 minutes 44 seconds East 5,328.98 feet to a point having Coordinates of X = 1,402,525.00 and Y = 408,365.00; and South 80 degrees 32 minutes 16 seconds East 1,985.33 feet to the most Northerly Northwest corner of State Lease No. 18519 having Coordinates of X = 1,404,483.31 and Y = 408,038.61; thence along the boundary of said State Lease No. 18519 the following courses: South 52 degrees 05 minutes 56 seconds West 1,983.74 feet to a point having Coordinates of X = 1,402,918.00 and Y = 406,820.00; South 37 degrees 48 minutes 27 seconds East 1,784.64 feet to a point having Coordinates of X = 1,404,012.00 and Y = 405,410.00; and North 51 degrees 24 minutes 55 seconds East 2,295.30 feet to its most Easterly Southeast corner, said corner also being the South corner of State Lease No. 18520, having Coordinates of X = 1,405,806.20 and Y = 406,841.51; thence North 51 degrees 24 minutes 55 seconds East 1,295.33 feet along the boundary of said State Lease No. 18520 to its Northeast corner, said corner also being a point on said Coastline, having Coordinates of X = 1,406,818.74 and Y = 407,649.37; thence along said Coastline the following courses: South 80 degrees 32 minutes 16 seconds East 3,402.56 feet to a point having Coordinates of X = 1,410,175.00 and Y = 407,090.00 and South 77 degrees 20 minutes 38 seconds East 1,141.03 feet to a point on the boundary of State Lease No. 18423 having Coordinates of X = 1,411,288.31 and Y = 406,840.00; thence along the boundary of said State Lease No. 18423 the following courses: West 2,720.31 feet to a point having Coordinates of X = 1,408,568.00 and Y = 406,840.00; South 1,130.00 feet to a point having Coordinates of X = 1,408,568.00 and Y = 405,710.00; West 2,288.00 feet to a point having Coordinates of X = 1,406,280.00 and Y = 405,710.00; and South 3,010.00 feet to its Southwest corner, said corner also being the most Westerly Northwest corner of State Lease No. 18521, having Coordinates of X =

1,406,280.00 and Y = 402,700.00; thence South 700.00 feet along the West line of said State Lease No. 18521 to a point having Coordinates of X = 1,406,280.00 and Y = 402,000.00; thence West 473.80 feet to a point on the common boundary line between Block 2, West Cameron Area, Revised, and said Block 3 having Coordinates of X = 1,405,806.20 and Y = 402,000.00; thence West 14,354.49 feet to the point of beginning, containing approximately **2,261.30 acres**, all as more particularly outlined on a plat on file in the Office of Mineral Resources, Department of Natural Resources. All bearings, distances and coordinates are based on Louisiana Coordinate System of 1927, (North or South Zone).

NOTE: The above description of the Tract nominated for lease has been provided and corrected, where required, exclusively by the nomination party. Any mineral lease selected from this Tract and awarded by the Louisiana State Mineral Board shall be without warranty of any kind, either express, implied, or statutory, including, but not limited to, the implied warranties of merchantability and fitness for a particular purpose. Should the mineral lease awarded by the Louisiana State Mineral Board be subsequently modified, cancelled or abrogated due to the existence of conflicting leases, operating agreements, private claims or other future obligations or conditions which may affect all or any portion of the leased Tract, it shall not relieve the Lessee of the obligation to pay any bonus due thereon to the Louisiana State Mineral Board, nor shall the Louisiana State Mineral Board be obligated to refund any consideration paid by the Lessor prior to such modification, cancellation, or abrogation, including, but not limited to, bonuses, rentals and royalties.

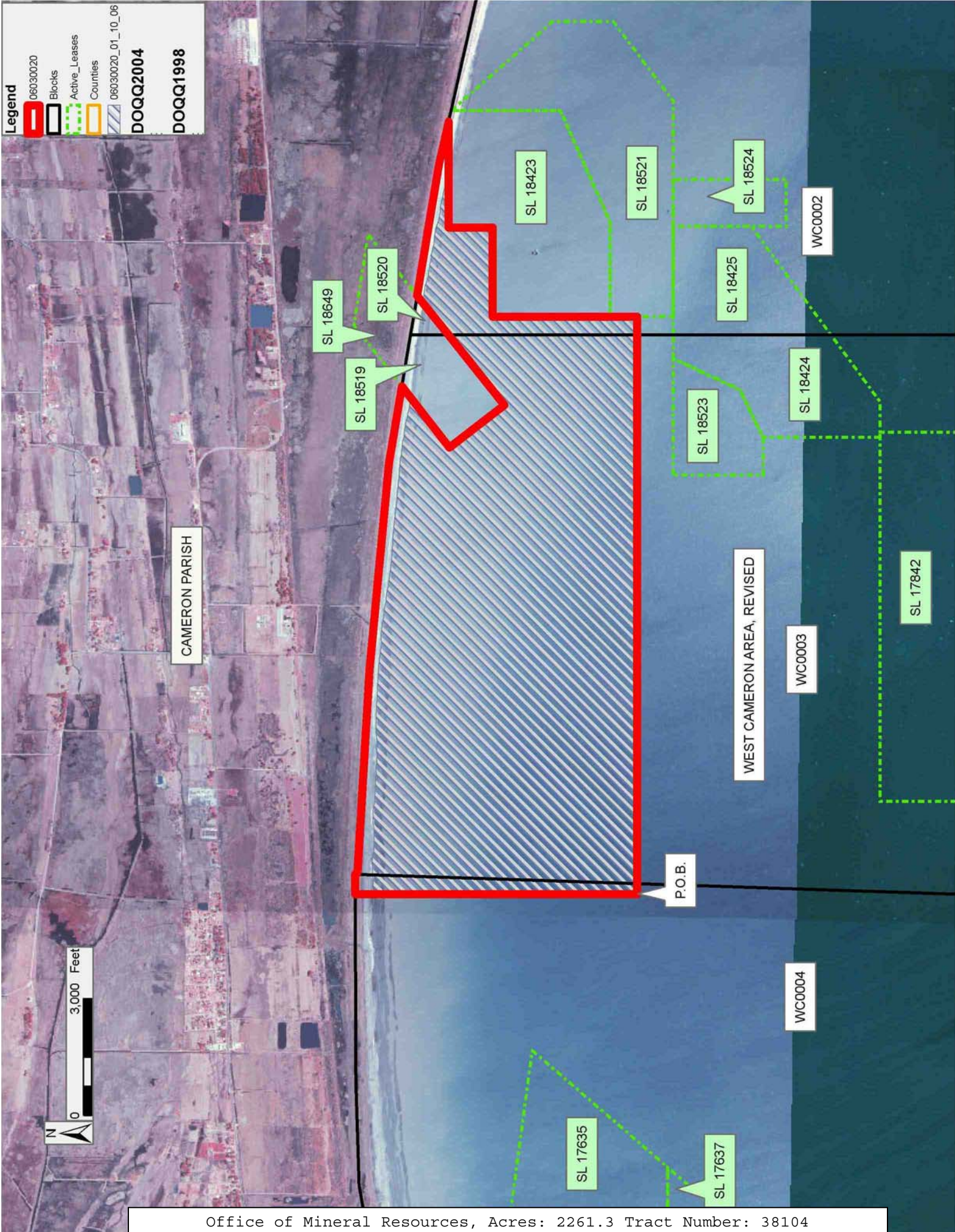
NOTE: The State of Louisiana does hereby reserve, and this lease shall be subject to, the imprescriptible right of surface use in the nature of a servitude in favor of the Department of Natural Resources, including its Offices and Commissions, for the sole purpose of implementing, constructing, servicing and maintaining approved coastal zone management and/or restoration projects. Utilization of any and all rights derived under this lease by the mineral lessee, its agents, successors or assigns, shall not interfere with nor hinder the reasonable surface use by the Department of Natural Resources, its Offices or Commissions, as herein above reserved.

Bidder	Cash Payment	Price/Acre	Rental	Oil	Gas	Other

Applicant: C. J. HALEY

**Legend**

- 06030020
- Blocks
- Active\_Leases
- Counties
- 06030020\_01\_10\_06
- DOQQ2004
- DOQQ1998



**TRACT 38105 - Portion of Block 2, West Cameron Area, Revised, Cameron Parish, Louisiana**

The beds and bottoms of all water bodies belonging to the State of Louisiana located in Block 2, West Cameron Area, Revised, together with any present lands formed by accretion to the shoreline or islands formed therein, located in Cameron Parish, Louisiana, owned by and not presently under mineral lease as of March 8, 2006, from the State of Louisiana, the geographical area of which is more fully described as follows: Beginning at a point on the East line of Block 2, West Cameron Area, Revised, having Coordinates of X = 1,421,416.19 and Y = 399,628.87; thence West 11,616.19 feet to a point on the East line of State Lease No. 18524 having Coordinates of X = 1,409,800.00 and Y = 399,628.87; thence North 1,453.87 feet along the East line of said State Lease No. 18524 to its Northeast corner, said corner also being a point on the South line of State Lease No. 18521, having Coordinates of X = 1,409,800.00 and Y = 401,082.74; thence along the boundary of said State Lease No. 18521 the following courses: East 2,028.00 feet to a point having Coordinates of X = 1,411,828.00 and Y = 401,082.74; North 53 degrees 05 minutes 21 seconds East 2,536.36 feet to a point having Coordinates of X = 1,413,856.00 and Y = 402,606.00; North 1,576.00 feet to a point having Coordinates of X = 1,413,856.00 and Y = 404,182.00; and North 41 degrees 25 minutes 49 seconds West 3,462.25 feet to a point on the Coastline as per the Supreme Court Decree dated June 16, 1975, having Coordinates of X = 1,411,565.00 and Y = 406,777.87; thence along the boundary of said Coastline the following courses: South 77 degrees 20 minutes 38 seconds East 4,919.53 feet to a point having Coordinates of X = 1,416,365.00 and Y = 405,700.00, and South 73 degrees 00 minutes 43 seconds East 5,281.66 feet to the Northeast corner of said Block 2 having Coordinates of X = 1,421,416.19 and Y = 404,156.83; thence South 4,527.96 feet along the East line of Block 2 to the point of beginning, containing approximately **1,206.02 acres**, all as more particularly outlined on a plat on file in the Office of Mineral Resources, Department of Natural Resources. All bearings, distances and coordinates are based on Louisiana Coordinate System of 1927, (North or South Zone).

NOTE: The above description of the Tract nominated for lease has been provided and corrected, where required, exclusively by the nomination party. Any mineral lease selected from this Tract and awarded by the Louisiana State Mineral Board shall be without warranty of any kind, either express, implied, or statutory, including, but not limited to, the implied warranties of merchantability and fitness for a particular purpose. Should the mineral lease awarded by the Louisiana State Mineral Board be subsequently modified, cancelled or abrogated due to the existence of conflicting leases, operating agreements, private claims or other future obligations or conditions which may affect all or any portion of the leased Tract, it shall not relieve the Lessee of the obligation to pay any bonus due thereon to the Louisiana State Mineral Board, nor shall the Louisiana State Mineral Board be obligated to refund any consideration

paid by the Lessor prior to such modification, cancellation, or abrogation, including, but not limited to, bonuses, rentals and royalties.

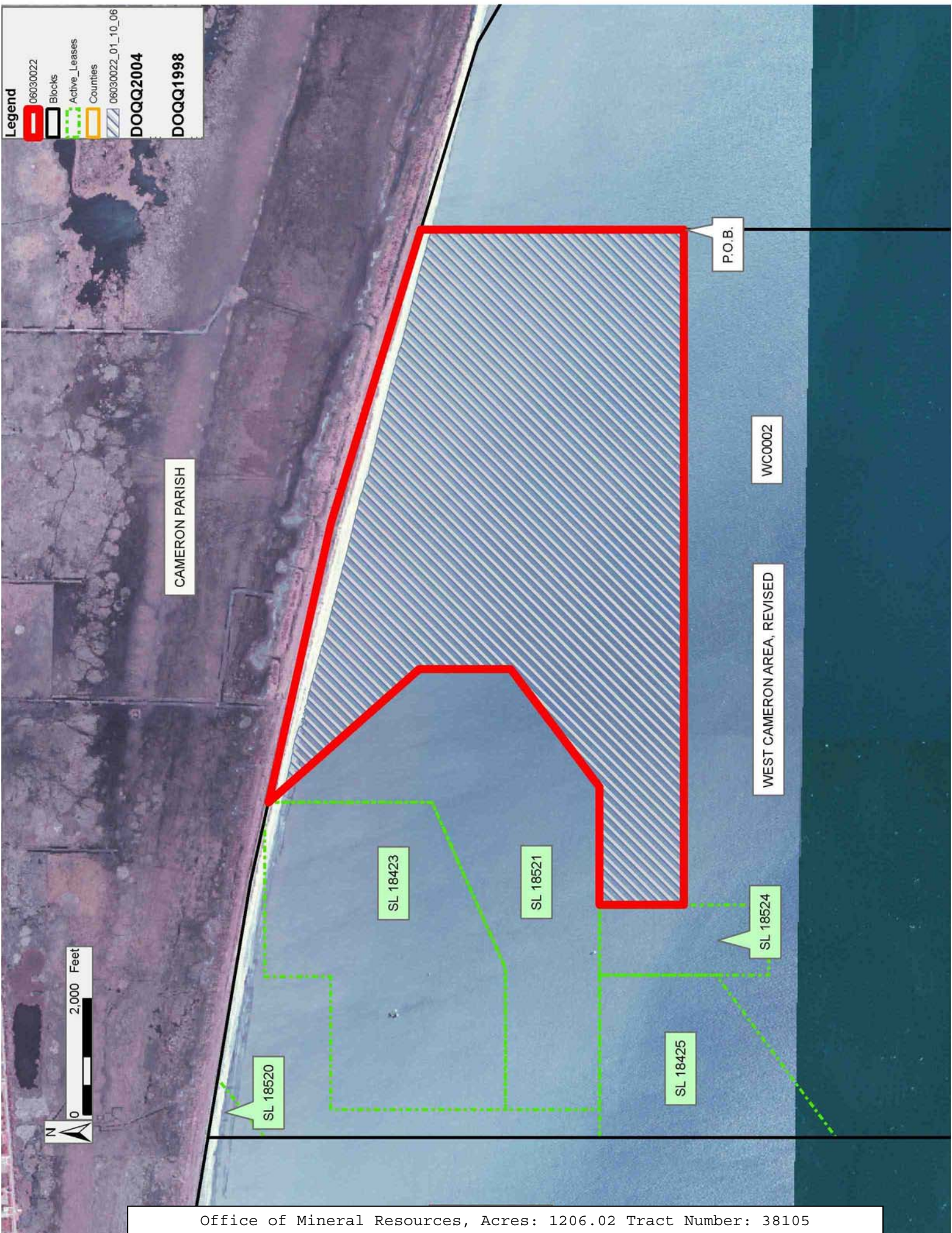
NOTE: The State of Louisiana does hereby reserve, and this lease shall be subject to, the imprescriptible right of surface use in the nature of a servitude in favor of the Department of Natural Resources, including its Offices and Commissions, for the sole purpose of implementing, constructing, servicing and maintaining approved coastal zone management and/or restoration projects. Utilization of any and all rights derived under this lease by the mineral lessee, its agents, successors or assigns, shall not interfere with nor hinder the reasonable surface use by the Department of Natural Resources, its Offices or Commissions, as herein above reserved.

Applicant: C. J. HALEY

Bidder	Cash Payment	Price/Acre	Rental	Oil	Gas	Other

**Legend**

- 06030022
- Blocks
- Active\_Leases
- Counties
- 06030022\_01\_10\_06
- DOQQ2004
- DOQQ1998



CAMERON PARISH

P.O.B.

WC0002

WEST CAMERON AREA, REVISED

SL 18423

SL 18521

SL 18524

SL 18520

SL 18425



**TRACT 38106 - Portion of Blocks 2, 3, and 4, West Cameron Area, Revised, Cameron Parish, Louisiana**

The beds and bottoms of all water bodies belonging to the State of Louisiana located in Blocks 2, 3, and 4, West Cameron Area, Revised, together with any present lands formed by accretion to the shoreline or islands formed therein, located in Cameron Parish, Louisiana, owned by and not presently under mineral lease as of March 8, 2006, from the State of Louisiana, the geographical area of which is more fully described as follows: Beginning at a point on the West line of Block 3, West Cameron Area, Revised, having Coordinates of X = 1,391,451.71 and Y = 402,000.00; thence East 14,354.49 feet to a point on the common boundary line between Block 2, West Cameron Area, Revised, and said Block 3 having Coordinates of X = 1,405,806.20 and Y = 402,000.00; thence East 473.80 feet to a point on the West line on State Lease No. 18521 having Coordinates of X = 1,406,280.00 and Y = 402,000.00; thence South 917.26 feet along the West line of said State Lease No. 18521 to its Southwest corner, said corner also being a point on the North line of State Lease No. 18425, having Coordinates of X = 1,406,280.00 and Y = 401,082.74; thence West 473.80 feet along the North line of said State Lease No. 18425 to its Northwest corner, said corner also being the Northeast corner of State Lease No. 18424, having Coordinates of X = 1,405,806.20 and Y = 401,082.74; thence West 598.40 feet along the North line of said State Lease No. 18424 to the Northeast corner of State Lease No. 18523 having Coordinates of X = 1,405,207.80 and Y = 401,082.74; thence along the boundary of said State Lease No. 18523 the following courses: West 3,001.80 feet to a point having Coordinates of X = 1,402,206.00 and Y = 401,082.74; South 2,311.74 feet to a point having Coordinates of X = 1,402,206.00 and Y = 398,771.00 and East 975.00 feet to the most Westerly Northwest corner of said State Lease No. 18424 having Coordinates of X = 1,403,181.00 and Y = 398,771.00; thence South 3,006.00 feet along the West line of said State Lease No. 18424 to a point on the North line of State Lease No. 17842 having Coordinates of X = 1,403,181.00 and Y = 395,765.00; thence West 9,351.00 feet along the North line of said State Lease No. 17842 to its Northwest corner having Coordinates of X = 1,393,830.00 and Y = 395,765.00; thence South 1,974.76 feet along the West line of said State Lease No. 17842 to its Southwest corner, said corner also being the most Northerly Northwest corner of State Lease No. 17845, having Coordinates of X = 1,393,830.00 and Y = 393,790.24; thence West 2,378.29 feet along the South line of said Block 3 to its Southwest corner having Coordinates of X = 1,391,451.71 and Y = 393,790.24; thence North 8,209.76 feet along the West line of said Block 3 and said Block 4 to the point of beginning, containing approximately **1,800.21 acres**, all as more particularly outlined on a plat on file in the Office of Mineral Resources, Department of Natural Resources. All bearings, distances and coordinates are based on Louisiana Coordinate System of 1927, (North or South Zone).

NOTE: The above description of the Tract nominated for lease has been provided and corrected, where required, exclusively by the nomination party. Any mineral lease selected from this Tract and awarded by the






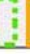

Louisiana State Mineral Board shall be without warranty of any kind, either express, implied, or statutory, including, but not limited to, the implied warranties of merchantability and fitness for a particular purpose. Should the mineral lease awarded by the Louisiana State Mineral Board be subsequently modified, cancelled or abrogated due to the existence of conflicting leases, operating agreements, private claims or other future obligations or conditions which may affect all or any portion of the leased Tract, it shall not relieve the Lessee of the obligation to pay any bonus due thereon to the Louisiana State Mineral Board, nor shall the Louisiana State Mineral Board be obligated to refund any consideration paid by the Lessor prior to such modification, cancellation, or abrogation, including, but not limited to, bonuses, rentals and royalties.

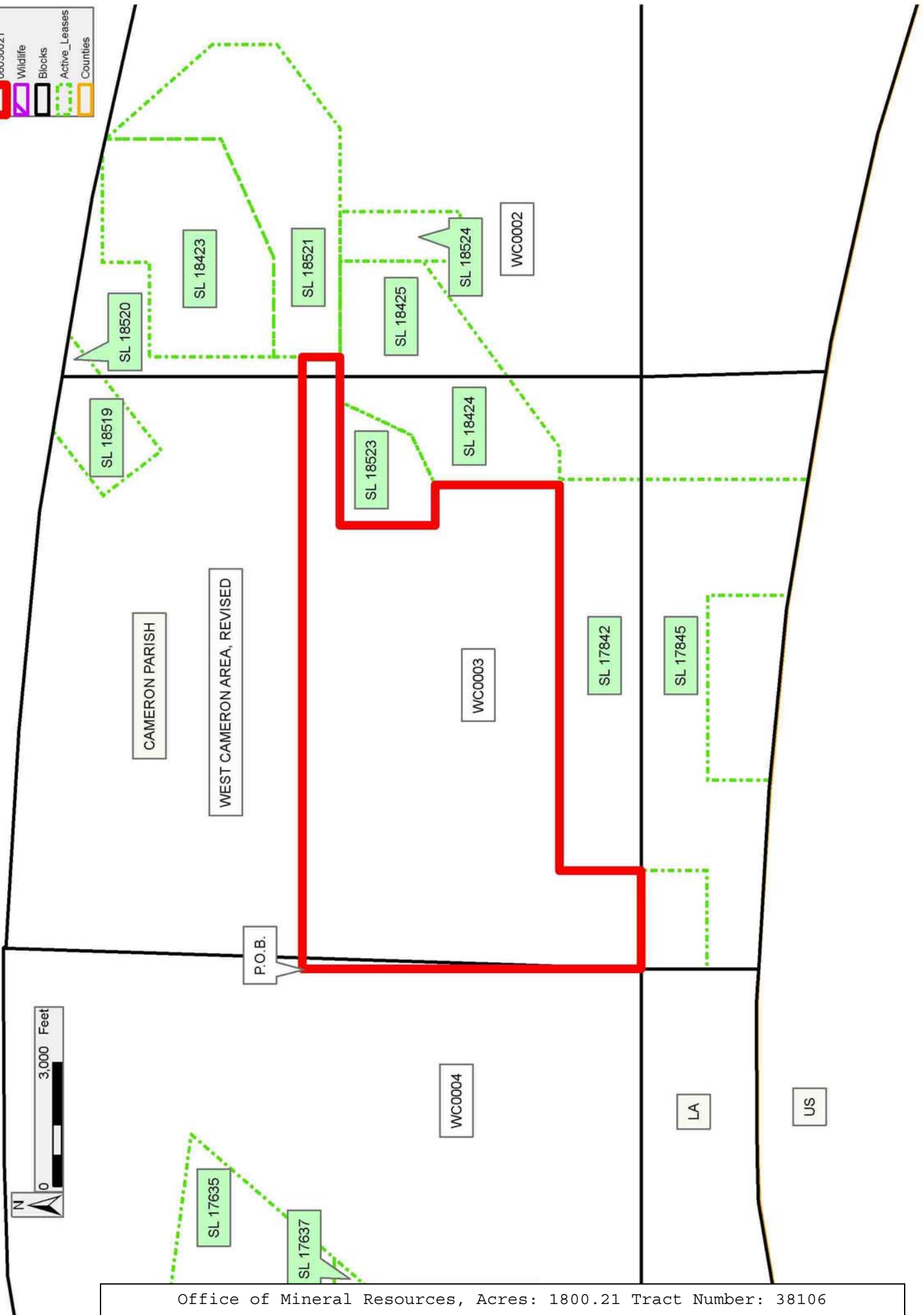
NOTE: The State of Louisiana does hereby reserve, and this lease shall be subject to, the imprescriptible right of surface use in the nature of a servitude in favor of the Department of Natural Resources, including its Offices and Commissions, for the sole purpose of implementing, constructing, servicing and maintaining approved coastal zone management and/or restoration projects. Utilization of any and all rights derived under this lease by the mineral lessee, its agents, successors or assigns, shall not interfere with nor hinder the reasonable surface use by the Department of Natural Resources, its Offices or Commissions, as herein above reserved.

Applicant: C. J. HALEY

Bidder	Cash Payment	Price/Acre	Rental	Oil	Gas	Other

**Legend**

-  06030021
-  Wildlife
-  Blocks
-  Active\_Leases
-  Counties



**TRACT 38107 - Portion of Blocks 2, and 3, West Cameron Area, Revised, Cameron Parish, Louisiana**

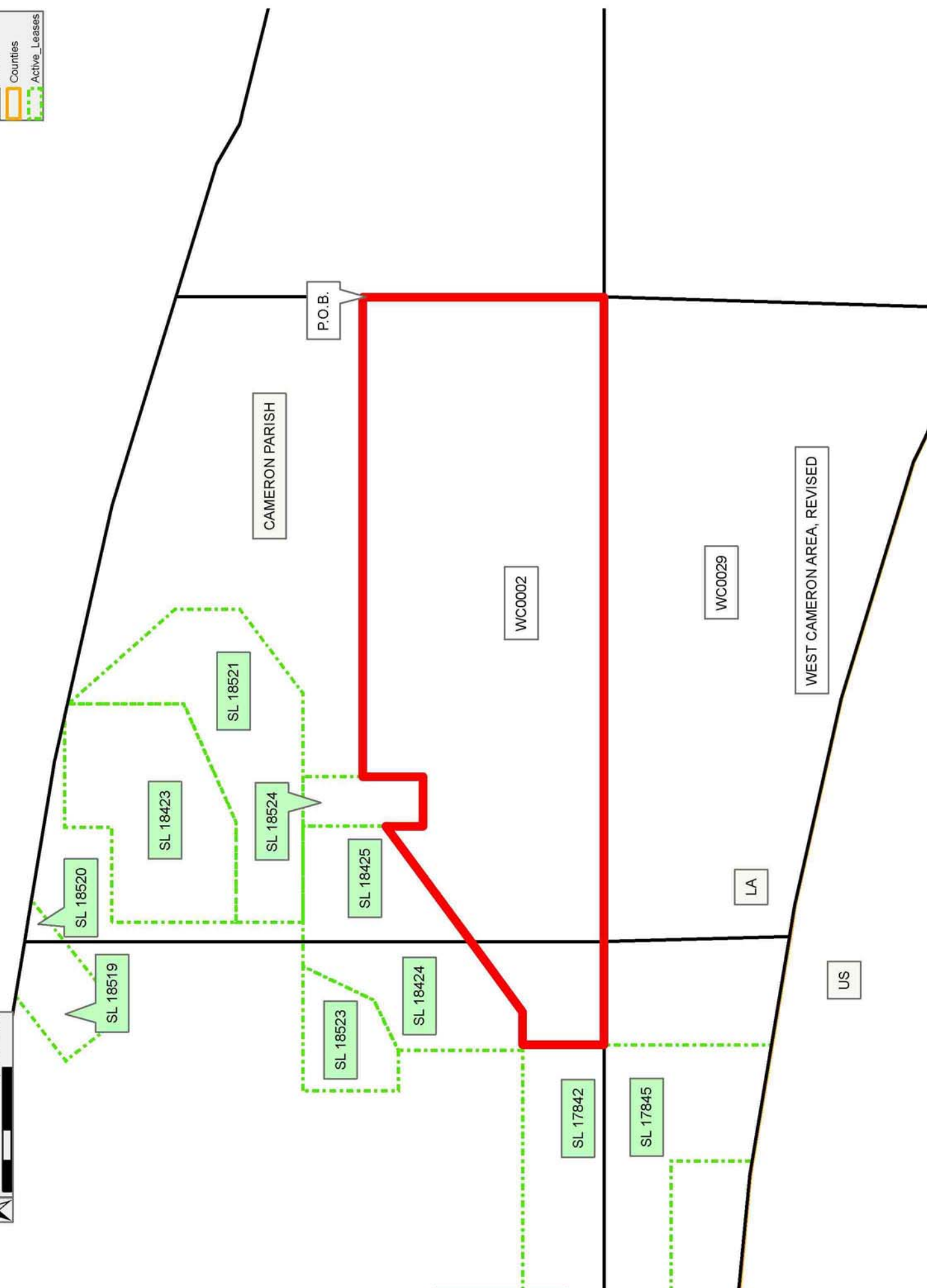
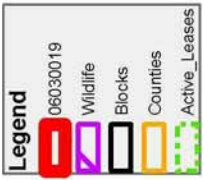
The beds and bottoms of all water bodies belonging to the State of Louisiana located in Blocks 2, and 3, West Cameron Area, Revised, together with any present lands formed by accretion to the shoreline or islands formed therein, located in Cameron Parish, Louisiana, owned by and not presently under mineral lease as of March 8, 2006, from the State of Louisiana, the geographical area of which is more fully described as follows: Beginning at a point on the East line of Block 2, West Cameron Area, Revised, having Coordinates of X = 1,421,416.19 and Y = 399,628.87; thence South 5,838.63 feet along the East line of said Block 2 to its Southeast corner, said corner also being the a point on the North line of Block 30, West Cameron Area, Revised, having Coordinates of X = 1,421,416.19 and Y = 393,790.24; thence West 448.39 feet along the North line of said Block 30 to its Northwest corner, said corner also being the Northeast corner of Block 29, West Cameron Area, Revised, having Coordinates of X = 1,420,967.81 and Y = 393,790.24; thence West 14,758.05 feet along the North line of said Block 29 to its Northwest corner, said corner also being the Northeast corner of Block 28, West Cameron Area, Revised, having Coordinates of X = 1,406,209.76 and Y = 393,790.24; thence West 403.56 feet along the North line of said Block 28 to the Southwest corner of said Block 2, said corner also being the Southeast corner of Block 3, West Cameron Area, Revised, having Coordinates of X = 1,405,806.20 and Y = 393,790.24; thence West 2,496.20 feet along the South line of said Block 3 to the South corner of State Lease No. 17842 having Coordinates of X = 1,403,310.00 and Y = 393,790.24; thence North 1,974.76 feet to a point on the South line of State Lease No. 18424 having Coordinates of X = 1,403,310.00 and Y = 395,765.00; thence along the boundary of said State Lease No. 18424 the following courses: East 795.28 feet to a point having Coordinates of X = 1,404,105.28 and Y = 395,765.00 and North 53 degrees 38 minutes 31 seconds East 2,112.09 feet to the Southwest corner of State Lease No. 18425, said corner also being a point on the common boundary line of said Block 2 and said Block 3, having Coordinates of X = 1,405,806.20 and Y = 397,017.11; thence North 53 degrees 38 minutes 30 seconds East 3,467.91 feet along the South line of said State Lease No. 18425 to its Southeast corner, said corner also being a point on the West line of State Lease No. 18524, having Coordinates of X = 1,408,599.00 and Y = 399,073.00; thence along the boundary of said State Lease No. 18524 the following courses: South 898.00 feet to a point having Coordinates X = 1,408,599.00 and Y = 398,175.00; East 1,201.00 feet to a point having Coordinates of X = 1,409,800.00 and Y = 398,175.00 and North 1,453.87 feet to a point having Coordinates of X = 1,409,800.00 and Y = 399,628.87; thence East 11,616.19 feet to the point of beginning, containing approximately **2,088.29 acres**, all as more particularly outlined on a plat on file in the Office of Mineral Resources, Department of Natural Resources. All bearings, distances and coordinates are based on Louisiana Coordinate System of 1927, (North or South Zone).

NOTE: The above description of the Tract nominated for lease has been provided and corrected, where required, exclusively by the nomination party. Any mineral lease selected from this Tract and awarded by the Louisiana State Mineral Board shall be without warranty of any kind, either express, implied, or statutory, including, but not limited to, the implied warranties of merchantability and fitness for a particular purpose. Should the mineral lease awarded by the Louisiana State Mineral Board be subsequently modified, cancelled or abrogated due to the existence of conflicting leases, operating agreements, private claims or other future obligations or conditions which may affect all or any portion of the leased Tract, it shall not relieve the Lessee of the obligation to pay any bonus due thereon to the Louisiana State Mineral Board, nor shall the Louisiana State Mineral Board be obligated to refund any consideration paid by the Lessor prior to such modification, cancellation, or abrogation, including, but not limited to, bonuses, rentals and royalties.

NOTE: The State of Louisiana does hereby reserve, and this lease shall be subject to, the imprescriptible right of surface use in the nature of a servitude in favor of the Department of Natural Resources, including its Offices and Commissions, for the sole purpose of implementing, constructing, servicing and maintaining approved coastal zone management and/or restoration projects. Utilization of any and all rights derived under this lease by the mineral lessee, its agents, successors or assigns, shall not interfere with nor hinder the reasonable surface use by the Department of Natural Resources, its Offices or Commissions, as herein above reserved.

Applicant: C. J. HALEY

Bidder	Cash Payment	Price/Acre	Rental	Oil	Gas	Other



**TRACT 38108 - Portion of Block 16, South Pass Area, Plaquemines Parish, Louisiana**

The beds and bottoms of all water bodies belonging to the State of Louisiana located in Block 16, South Pass Area, together with any present lands formed by accretion to the shoreline or islands formed therein, located in Plaquemines Parish, Louisiana, owned by and not presently under mineral lease as of March 8, 2006, from the State of Louisiana, the geographical area of which is more fully described as follows: Beginning at the Southeast corner of Block 16, South Pass Area having Coordinates of X = 2,733,992.00 and Y = 141,182.00; Thence West 10,605.28 feet along the South boundary of said Block 16 to an intersection point on the Eastern boundary of the Pass-A-Loutre Wildlife Management Area having Coordinates of X = 2,723,386.72 and Y = 141,182.00; Thence Northeasterly along the said Eastern boundary of the Pass-A-Loutre Wildlife Management Area to an intersection point on the North boundary of said Block 16 having Coordinates of X = 2,730,992.43 and Y = 155,940.00; Thence East 2,999.57 feet along the North boundary of Block 16 to its Northeast corner having Coordinates of X = 2,733,992.00 and Y = 155,940.00; Thence South 14,758.00 feet along the East boundary of said Block 16 to the point of beginning, containing approximately **2,304.64 acres**, all as more particularly outlined on a plat on file in the Office of Mineral Resources, Department of Natural Resources. All bearings, distances and coordinates are based on Louisiana Coordinate System of 1927, (North or South Zone).

NOTE: The above description of the Tract nominated for lease has been provided and corrected, where required, exclusively by the nomination party. Any mineral lease selected from this Tract and awarded by the Louisiana State Mineral Board shall be without warranty of any kind, either express, implied, or statutory, including, but not limited to, the implied warranties of merchantability and fitness for a particular purpose. Should the mineral lease awarded by the Louisiana State Mineral Board be subsequently modified, cancelled or abrogated due to the existence of conflicting leases, operating agreements, private claims or other future obligations or conditions which may affect all or any portion of the leased Tract, it shall not relieve the Lessee of the obligation to pay any bonus due thereon to the Louisiana State Mineral Board, nor shall the Louisiana State Mineral Board be obligated to refund any consideration paid by the Lessor prior to such modification, cancellation, or abrogation, including, but not limited to, bonuses, rentals and royalties.

NOTE: The State of Louisiana does hereby reserve, and this lease shall be subject to, the imprescriptible right of surface use in the nature of a servitude in favor of the Department of Natural Resources, including its Offices and Commissions, for the sole purpose of implementing, constructing, servicing and maintaining approved coastal zone management and/or restoration projects. Utilization of any and all rights derived under this lease by the mineral lessee, its agents, successors or assigns, shall not interfere with nor hinder the reasonable surface use by the

Department of Natural Resources, its Offices or Commissions, as herein above reserved.





NOTE: It appears, according to our records, that a portion of this Tract is located within the restrictive safety fairway area as set out by the Corps of Engineers, U.S. Army and/or the restrictive anchorage area as set out by the U.S. Coast Guard.

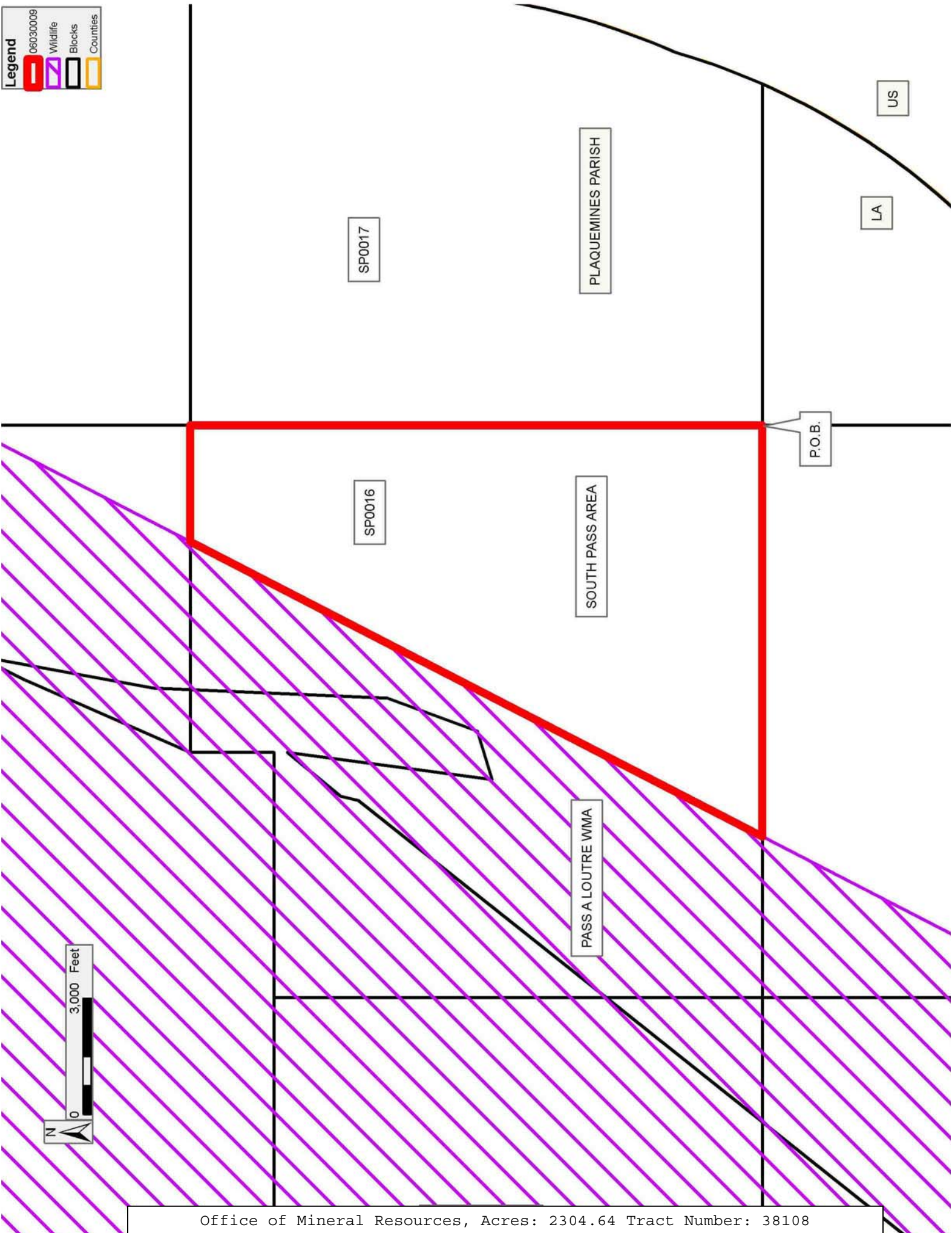
NOTE: The Department of Wildlife and Fisheries has designated certain areas in the coastal waters of the State of Louisiana as Oyster Seed Bed Areas. The exact location of those Seed Bed Areas must be obtained from the Department of Wildlife and Fisheries and any work done under a mineral lease from the State of Louisiana may necessarily be conducted in conformity with the rules and regulations promulgated by the said Department of Wildlife and Fisheries for Oyster Seed Bed Areas.

Applicant: CYPRESS ENERGY CORPORATION

Bidder	Cash Payment	Price/Acre	Rental	Oil	Gas	Other

**Legend**

-  06030009
-  Wildlife
-  Blocks
-  Counties



SP0017

PLAQUEMINES PARISH

US

LA

SP0016

SOUTH PASS AREA

P.O.B.

PASS A LOUTRE WMA





**TRACT 38109 - Portion of Block 17, South Pass Area, Plaquemines Parish, Louisiana**

The beds and bottoms of all water bodies belonging to the State of Louisiana located in Block 17, South Pass Area, together with any present lands formed by accretion to the shoreline or islands formed therein, located in Plaquemines Parish, Louisiana, owned by and not presently under mineral lease as of March 8, 2006, from the State of Louisiana, the geographical area of which is more fully described as follows: Beginning at the Southwest corner of Block 17, South Pass Area having Coordinates of X = 2,733,992.00 and Y = 141,182.00; Thence North 14,758.00 feet along the West boundary of said Block 17 to its Northwest corner having Coordinates of X = 2,733,992.00 and Y = 155,940.00; Thence East 7,379.00 feet along the North boundary of said Block 17 to a point having Coordinates of X = 2,741,371.00 and Y = 155,940.00; Thence South 14,758.00 feet to an intersection point on the South boundary of said Block 17 having Coordinates of X = 2,741,371.00 and Y = 141,182.00; Thence West 7,379.00 feet along the South boundary of said Block 17 to the point of beginning, containing approximately **2,499.98 acres**, all as more particularly outlined on a plat on file in the Office of Mineral Resources, Department of Natural Resources. All bearings, distances and coordinates are based on Louisiana Coordinate System of 1927, (North or South Zone).





NOTE: The above description of the Tract nominated for lease has been provided and corrected, where required, exclusively by the nomination party. Any mineral lease selected from this Tract and awarded by the Louisiana State Mineral Board shall be without warranty of any kind, either express, implied, or statutory, including, but not limited to, the implied warranties of merchantability and fitness for a particular purpose. Should the mineral lease awarded by the Louisiana State Mineral Board be subsequently modified, cancelled or abrogated due to the existence of conflicting leases, operating agreements, private claims or other future obligations or conditions which may affect all or any portion of the leased Tract, it shall not relieve the Lessee of the obligation to pay any bonus due thereon to the Louisiana State Mineral Board, nor shall the Louisiana State Mineral Board be obligated to refund any consideration paid by the Lessor prior to such modification, cancellation, or abrogation, including, but not limited to, bonuses, rentals and royalties.

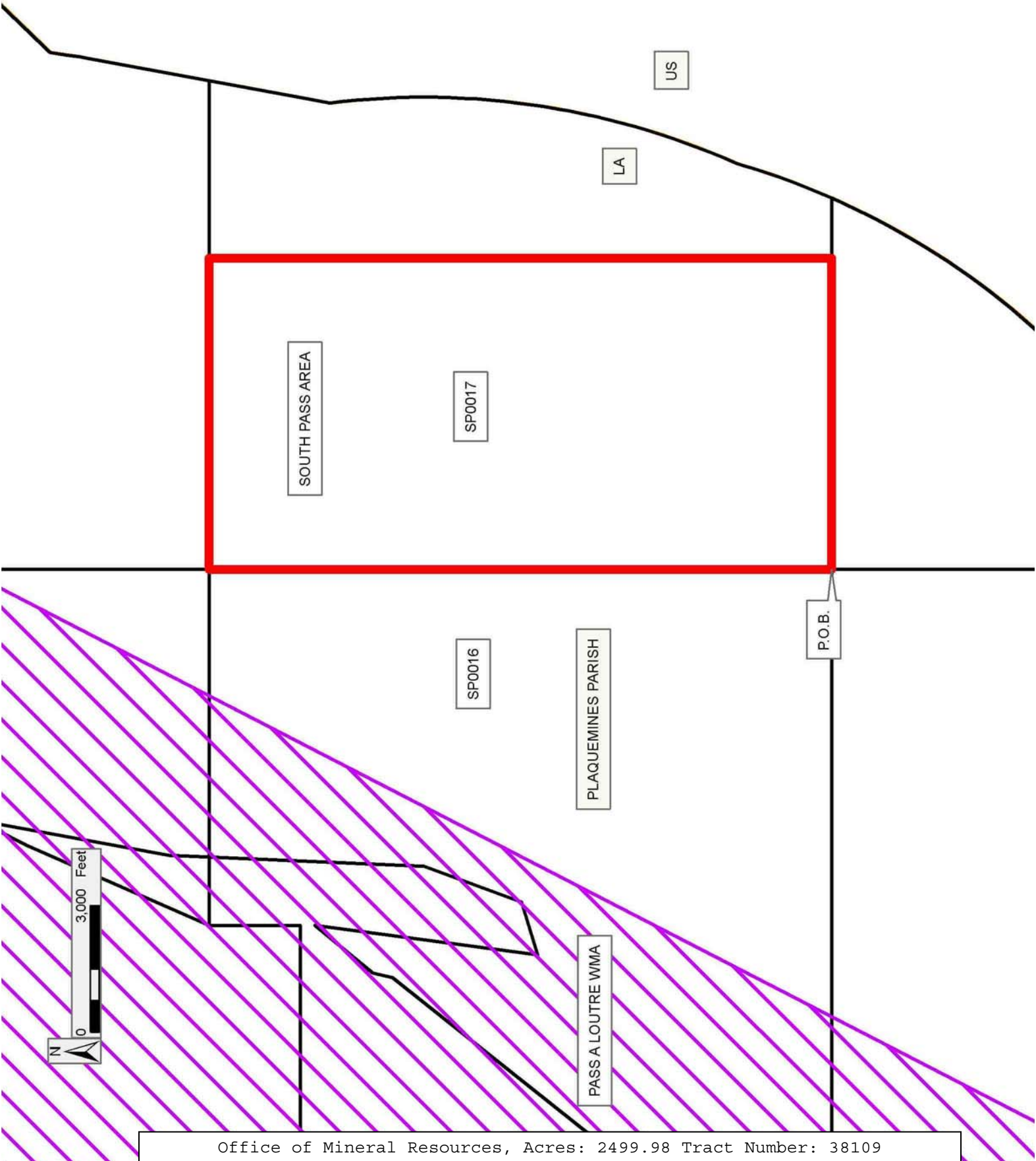
NOTE: The State of Louisiana does hereby reserve, and this lease shall be subject to, the imprescriptible right of surface use in the nature of a servitude in favor of the Department of Natural Resources, including its Offices and Commissions, for the sole purpose of implementing, constructing, servicing and maintaining approved coastal zone management and/or restoration projects. Utilization of any and all rights derived under this lease by the mineral lessee, its agents, successors or assigns, shall not interfere with nor hinder the reasonable surface use by the Department of Natural Resources, its Offices or Commissions, as herein above reserved.

Applicant: CYPRESS ENERGY CORPORATION

Bidder	Cash Payment	Price/Acre	Rental	Oil	Gas	Other

**Legend**

-  06030010
-  Wildlife
-  Blocks
-  Counties



Office of Mineral Resources, Acres: 2499.98 Tract Number: 38109

**TRACT 38110 - Portion of Block 17, South Pass Area, Plaquemines Parish, Louisiana**

The beds and bottoms of all water bodies belonging to the State of Louisiana located in Block 17, South Pass Area, together with any present lands formed by accretion to the shoreline or islands formed therein, located in Plaquemines Parish, Louisiana, owned by and not presently under mineral lease as of March 8, 2006, from the State of Louisiana, the geographical area of which is more fully described as follows: Beginning at a point on the North boundary of Block 17, South Pass Area having Coordinates of X = 2,741,371.00 and Y = 155,940.00; Thence East 4,214.11 feet to an intersection point on the Three Mile Line having Coordinates of X = 2,745,585.11 and Y = 155,940.00; Thence along the said Three Mile Line the following courses: Southwesterly in a straight line to a point having Coordinates of X = 2,745,156.00 and Y = 153,600.00; Southwesterly on an arc having a radius of 18,240.60 feet and a center at X = 2,727,215 and Y = 156,890 to a point having Coordinates of X = 2,745,054.00 and Y = 153,083.00; Southwesterly on an arc having a radius of 18,240.60 feet and a center at X = 2,726,951 and Y = 150,846 to a point having Coordinates of X = 2,743,622.00 and Y = 143,444.00; Southwesterly on an arc having a radius of 18,240.60 feet and a center at X = 2,726,105 and Y = 148,530 to an intersection point on the South boundary of said Block 17 having Coordinates of X = 2,742,800.09 and Y = 141,182.00; Thence West 1,429.09 feet along the said South boundary of Block 17 to a point having Coordinates of X = 2,741,371.00 and Y = 141,182.00; Thence North 14,758.00 feet to the point of beginning, containing approximately **1,111.95 acres, LESS AND EXCEPT** that portion thereof, if any, lying seaward of the line three nautical miles from the coast line of Louisiana, as said three mile line has been decreed by the Supreme Court of the United States, as determined by a Special Master appointed therein, in litigation styled **United States v. State of Louisiana et al No. 9 Original**, in 1975, all as more particularly outlined on a plat in the Office of Mineral Resources, Department of Natural Resources. All bearings, distances and coordinates are based on the Louisiana Coordinate System of 1927, (South Zone).





NOTE: The above description of the Tract nominated for lease has been provided and corrected, where required, exclusively by the nomination party. Any mineral lease selected from this Tract and awarded by the Louisiana State Mineral Board shall be without warranty of any kind, either express, implied, or statutory, including, but not limited to, the implied warranties of merchantability and fitness for a particular purpose. Should the mineral lease awarded by the Louisiana State Mineral Board be subsequently modified, cancelled or abrogated due to the existence of conflicting leases, operating agreements, private claims or other future obligations or conditions which may affect all or any portion of the leased Tract, it shall not relieve the Lessee of the obligation to pay any bonus due thereon to the Louisiana State Mineral Board, nor shall the Louisiana State Mineral Board be obligated to refund any consideration paid by the Lessor prior to such modification, cancellation, or abrogation, including, but not limited to, bonuses, rentals and royalties.

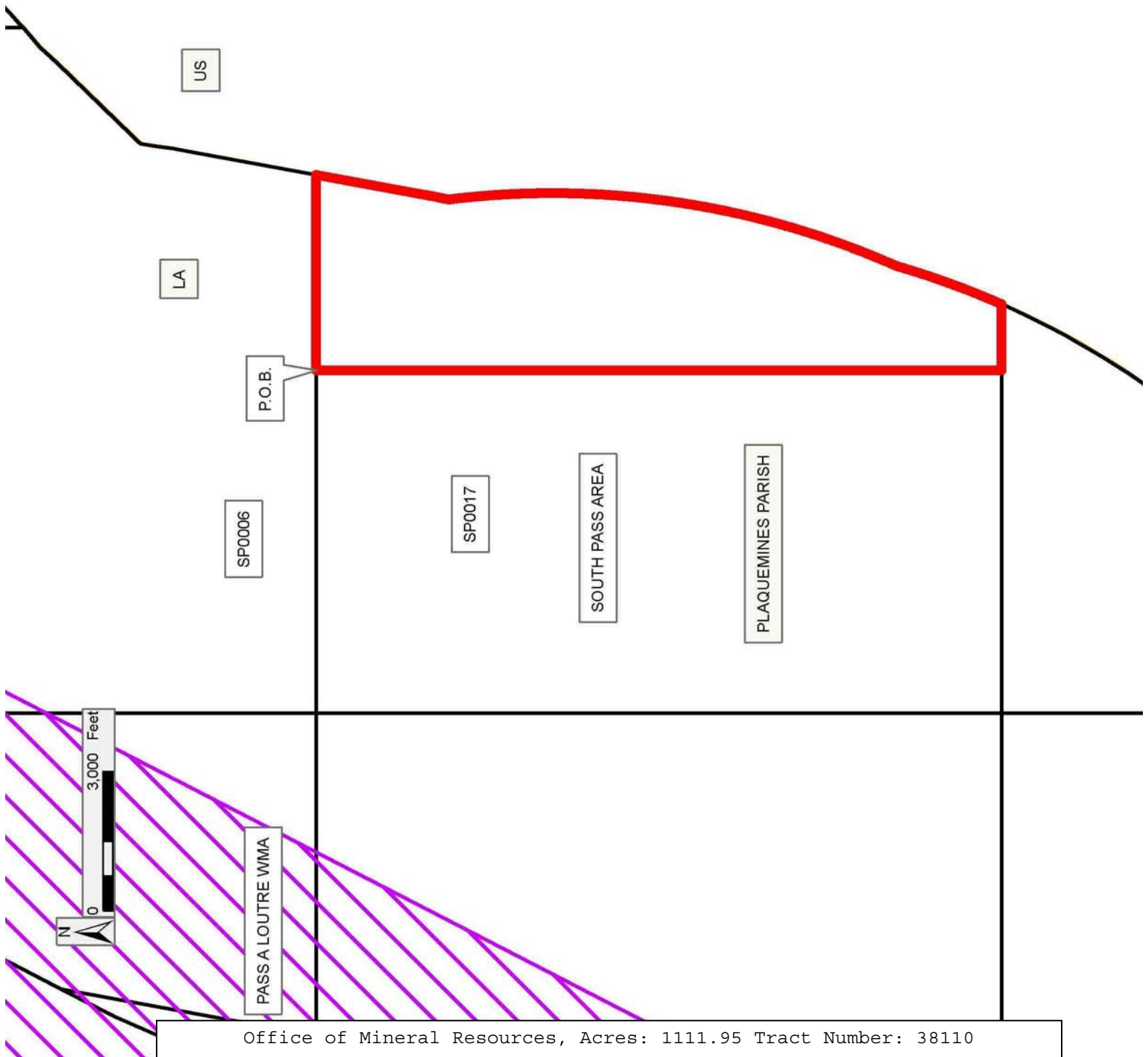
NOTE: The State of Louisiana does hereby reserve, and this lease shall be subject to, the imprescriptible right of surface use in the nature of a servitude in favor of the Department of Natural Resources, including its Offices and Commissions, for the sole purpose of implementing, constructing, servicing and maintaining approved coastal zone management and/or restoration projects. Utilization of any and all rights derived under this lease by the mineral lessee, its agents, successors or assigns, shall not interfere with nor hinder the reasonable surface use by the Department of Natural Resources, its Offices or Commissions, as herein above reserved.

Applicant: CYPRESS ENERGY CORPORATION

Bidder	Cash Payment	Price/Acre	Rental	Oil	Gas	Other

**Legend**

-  06030011
-  Wildlife
-  Blocks
-  Counties



**TRACT 38111 - Portion of Block 19, South Pass Area, Plaquemines Parish, Louisiana**

The beds and bottoms of all water bodies belonging to the State of Louisiana located in Block 19, South Pass Area, together with any present lands formed by accretion to the shoreline or islands formed therein, located in Plaquemines Parish, Louisiana, owned by and not presently under mineral lease as of March 8, 2006, from the State of Louisiana, the geographical area of which is more fully described as follows: Beginning at the Southwest corner of said Block 19, South Pass Area having Coordinates of X = 2,719,234.00 and Y = 126,424.00; thence North 7,542.84 feet along the West boundary of said Block 19 to a point on the Eastern boundary of the Pass A Loutre Wildlife Management Area having Coordinates of X = 2,719,234.00 and Y = 133,966.84; thence along the said Eastern boundary of the Pass A Loutre Wildlife Management Area the following courses: Northeasterly on an arc to the left having a radius of 77,200.00 feet and a center at X = 2,656,474.99 and Y = 178,924.00 to a point having Coordinates of X = 2,720,975.28 and Y = 136,502.87; thence North 27 degrees 15 minutes 53 seconds East 5,263.96 feet to a point on the North boundary of said Block 19 having Coordinates of X = 2,723,386.72 and Y = 141,182.00; thence East 3,226.28 feet along the said North boundary of Block 19 to a point having Coordinates of X = 2,726,613.00 and Y = 141,182.00; thence South 14,758.00 feet to a point on the South boundary of said Block 19 having Coordinates of X = 2,726,613.00 and Y = 126,424.00; Thence West 7,379.00 feet along the said South boundary of Block 19 to the point of beginning, containing approximately **2,132.01 acres**, all as more particularly outlined on a plat on file in the Office of Mineral Resources, Department of Natural Resources. All bearings, distances and coordinates are based on Louisiana Coordinate System of 1927, (North or South Zone).

NOTE: The above description of the Tract nominated for lease has been provided and corrected, where required, exclusively by the nomination party. Any mineral lease selected from this Tract and awarded by the Louisiana State Mineral Board shall be without warranty of any kind, either express, implied, or statutory, including, but not limited to, the implied warranties of merchantability and fitness for a particular purpose. Should the mineral lease awarded by the Louisiana State Mineral Board be subsequently modified, cancelled or abrogated due to the existence of conflicting leases, operating agreements, private claims or other future obligations or conditions which may affect all or any portion of the leased Tract, it shall not relieve the Lessee of the obligation to pay any bonus due thereon to the Louisiana State Mineral Board, nor shall the Louisiana State Mineral Board be obligated to refund any consideration paid by the Lessor prior to such modification, cancellation, or abrogation, including, but not limited to, bonuses, rentals and royalties.

NOTE: The State of Louisiana does hereby reserve, and this lease shall be subject to, the imprescriptible right of surface use in the nature of a servitude in favor of the Department of Natural Resources, including its

Offices and Commissions, for the sole purpose of implementing, constructing, servicing and maintaining approved coastal zone management and/or restoration projects. Utilization of any and all rights derived under this lease by the mineral lessee, its agents, successors or assigns, shall not interfere with nor hinder the reasonable surface use by the Department of Natural Resources, its Offices or Commissions, as herein above reserved.





NOTE: It appears, according to our records, that a portion of this Tract is located within the restrictive safety fairway area as set out by the Corps of Engineers, U.S. Army and/or the restrictive anchorage area as set out by the U.S. Coast Guard.

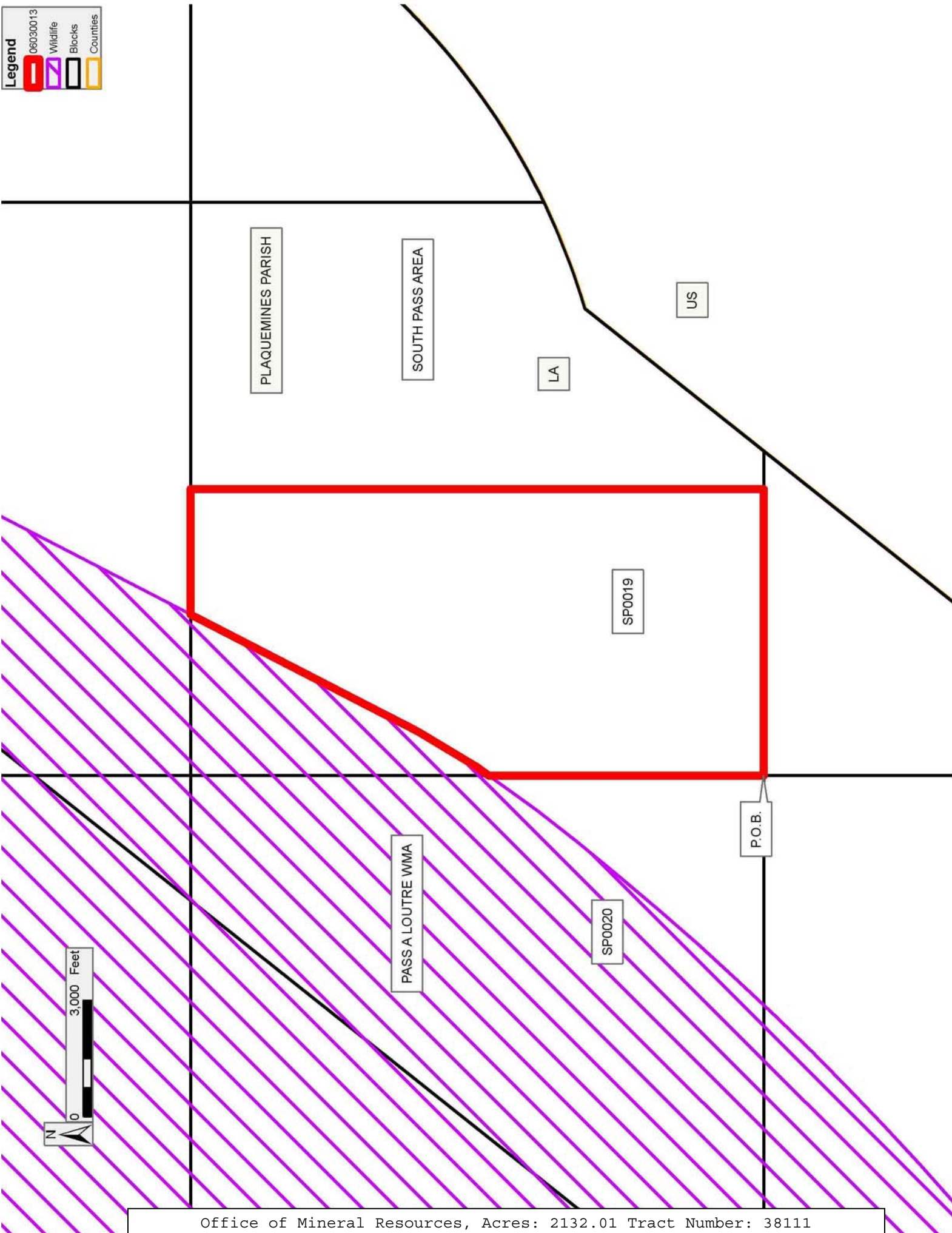
Applicant: CYPRESS ENERGY CORPORATION

Bidder	Cash Payment	Price/Acre	Rental	Oil	Gas	Other



**Legend**

-  06030013
-  Wildlife
-  Blocks
-  Counties



**TRACT 38112 - Portion of Block 19, South Pass Area, Plaquemines Parish, Louisiana**

The beds and bottoms of all water bodies belonging to the State of Louisiana located in Block 19, South Pass Area, together with any present lands formed by accretion to the shoreline or islands formed therein, located in Plaquemines Parish, Louisiana, owned by and not presently under mineral lease as of March 8, 2006, from the State of Louisiana, the geographical area of which is more fully described as follows: Beginning at the Northeast corner of Block 19, South Pass Area having Coordinates of X = 2,733,992.00 and Y = 141,182.00; Thence South 9,099.33 feet along the East boundary of said Block 19 to an intersection point on the Three Mile Line having Coordinates of X = 2,733,992.00 and Y = 132,082.67; Thence along the said Three Mile Line the following courses: Southwesterly on an arc having a radius of 18,240.60 feet and a center at X = 2,726,105 and Y = 148,530 to a point having Coordinates of X = 2,731,258.00 and Y = 131,033.00; Southwesterly on a straight line to an intersection point on the South boundary of said Block 19 having Coordinates of X = 2,727,588.45 and Y = 126,424.00; Thence West 975.45 feet along the said South boundary of Block 19 to a point having Coordinates of X = 2,726,613.00 and Y = 126,424.00; Thence North 14,758.00 feet to an intersection point on the North boundary of said Block 19 having Coordinates of X = 2,726,613.00 and Y = 141,182.00; Thence East 7,379.00 feet along the North boundary of Block 19 to the point of beginning, containing approximately **1,986.27 acres, LESS AND EXCEPT** that portion thereof, if any, lying seaward of the line three nautical miles from the coast line of Louisiana, as said three mile line has been decreed by the Supreme Court of the United States, as determined by a Special Master appointed therein, in litigation styled **United States v. State of Louisiana et al No. 9 Original**, in 1975, all as more particularly outlined on a plat in the Office of Mineral Resources, Department of Natural Resources. All bearings, distances and coordinates are based on the Louisiana Coordinate System of 1927, (South Zone).

NOTE: The above description of the Tract nominated for lease has been provided and corrected, where required, exclusively by the nomination party. Any mineral lease selected from this Tract and awarded by the Louisiana State Mineral Board shall be without warranty of any kind, either express, implied, or statutory, including, but not limited to, the implied warranties of merchantability and fitness for a particular purpose. Should the mineral lease awarded by the Louisiana State Mineral Board be subsequently modified, cancelled or abrogated due to the existence of conflicting leases, operating agreements, private claims or other future obligations or conditions which may affect all or any portion of the leased Tract, it shall not relieve the Lessee of the obligation to pay any bonus due thereon to the Louisiana State Mineral Board, nor shall the Louisiana State Mineral Board be obligated to refund any consideration paid by the Lessor prior to such modification, cancellation, or abrogation, including, but not limited to, bonuses, rentals and royalties.



NOTE: The State of Louisiana does hereby reserve, and this lease shall be subject to, the imprescriptible right of surface use in the nature of a servitude in favor of the Department of Natural Resources, including its Offices and Commissions, for the sole purpose of implementing, constructing, servicing and maintaining approved coastal zone management and/or restoration projects. Utilization of any and all rights derived under this lease by the mineral lessee, its agents, successors or assigns, shall not interfere with nor hinder the reasonable surface use by the Department of Natural Resources, its Offices or Commissions, as herein above reserved.

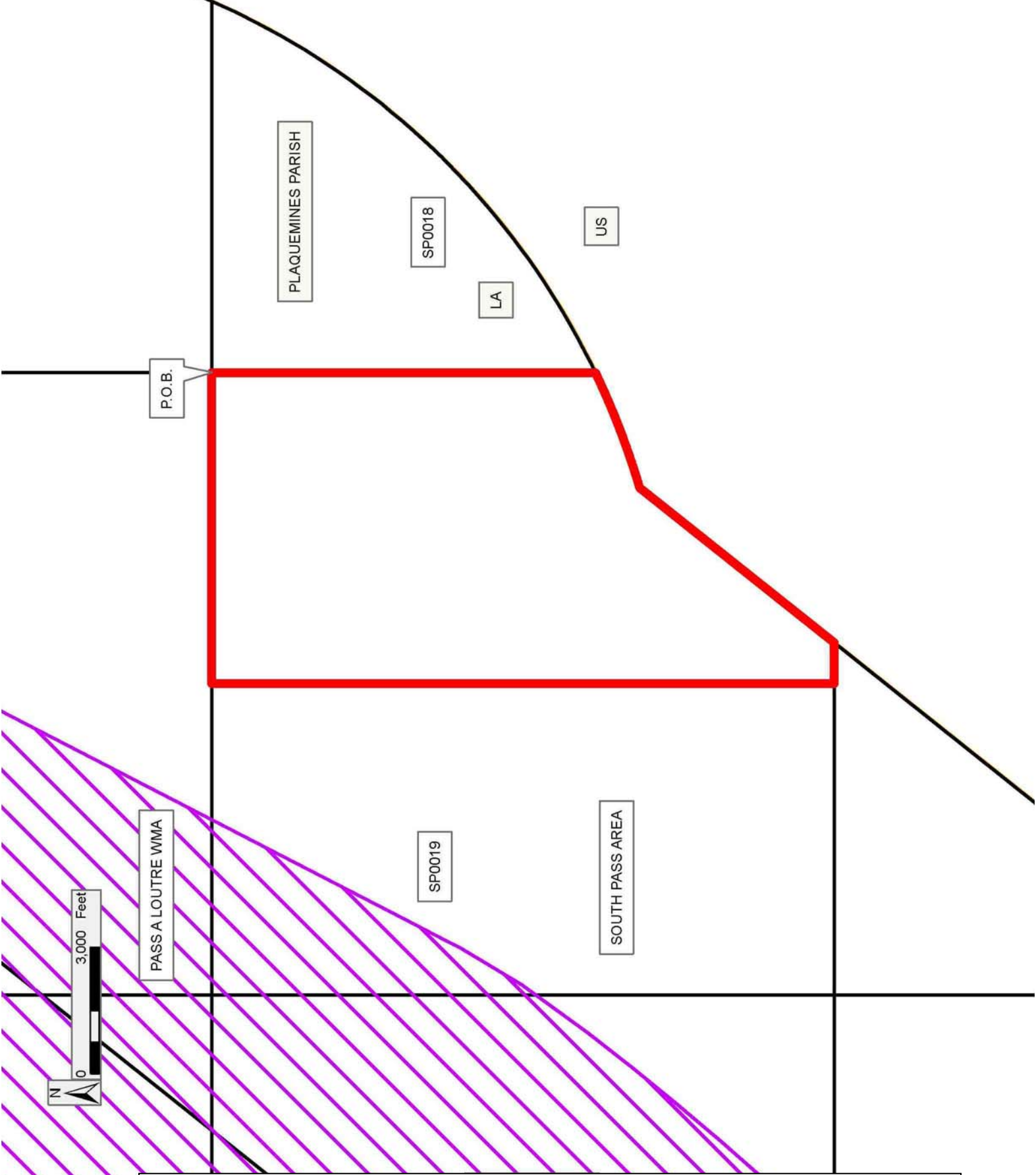
NOTE: It appears, according to our records, that a portion of this Tract is located within the restrictive safety fairway area as set out by the Corps of Engineers, U.S. Army and/or the restrictive anchorage area as set out by the U.S. Coast Guard.

Applicant: CYPRESS ENERGY CORPORATION

Bidder	Cash Payment	Price/Acre	Rental	Oil	Gas	Other

**Legend**

-  06030014
-  Wildlife
-  Blocks
-  Counties



**TRACT 38113 - Portion of Block 18, South Pass Area, Plaquemines Parish, Louisiana**

The beds and bottoms of all water bodies belonging to the State of Louisiana located in Block 18, South Pass Area, together with any present lands formed by accretion to the shoreline or islands formed therein, located in Plaquemines Parish, Louisiana, owned by and not presently under mineral lease as of March 8, 2006, from the State of Louisiana, the geographical area of which is more fully described as follows: Beginning at the Northwest corner of Block 18, South Pass Area having Coordinates of X = 2,733,992.00 and Y = 141,182.00; Thence East 8,808.09 feet along the North boundary of said Block 18 to an intersection point on the Three Mile Line having Coordinates of X = 2,742,800.09 and Y = 141,182.00; Thence along the said Three Mile Line, Southwesterly on an arc having a radius of 18,240.60 feet and a center at X = 2,726,105.00 and Y = 148,530.00 to an intersection point on the West boundary of said Block 18 having Coordinates of X = 2,733,992.00 and Y = 132,082.67; Thence North 9,099.33 feet along the West boundary of Block 18 to the point of beginning, containing approximately **1,141.23 acres, LESS AND EXCEPT** that portion thereof, if any, lying seaward of the line three nautical miles from the coast line of Louisiana, as said three mile line has been decreed by the Supreme Court of the United States, as determined by a Special Master appointed therein, in litigation styled **United States v. State of Louisiana et al No. 9 Original**, in 1975, all as more particularly outlined on a plat in the Office of Mineral Resources, Department of Natural Resources. All bearings, distances and coordinates are based on the Louisiana Coordinate System of 1927, (South Zone).

NOTE: The above description of the Tract nominated for lease has been provided and corrected, where required, exclusively by the nomination party. Any mineral lease selected from this Tract and awarded by the Louisiana State Mineral Board shall be without warranty of any kind, either express, implied, or statutory, including, but not limited to, the implied warranties of merchantability and fitness for a particular purpose. Should the mineral lease awarded by the Louisiana State Mineral Board be subsequently modified, cancelled or abrogated due to the existence of conflicting leases, operating agreements, private claims or other future obligations or conditions which may affect all or any portion of the leased Tract, it shall not relieve the Lessee of the obligation to pay any bonus due thereon to the Louisiana State Mineral Board, nor shall the Louisiana State Mineral Board be obligated to refund any consideration paid by the Lessor prior to such modification, cancellation, or abrogation, including, but not limited to, bonuses, rentals and royalties.

NOTE: The State of Louisiana does hereby reserve, and this lease shall be subject to, the imprescriptible right of surface use in the nature of a servitude in favor of the Department of Natural Resources, including its Offices and Commissions, for the sole purpose of implementing, constructing, servicing and maintaining approved coastal zone management and/or restoration projects. Utilization of any and all rights derived

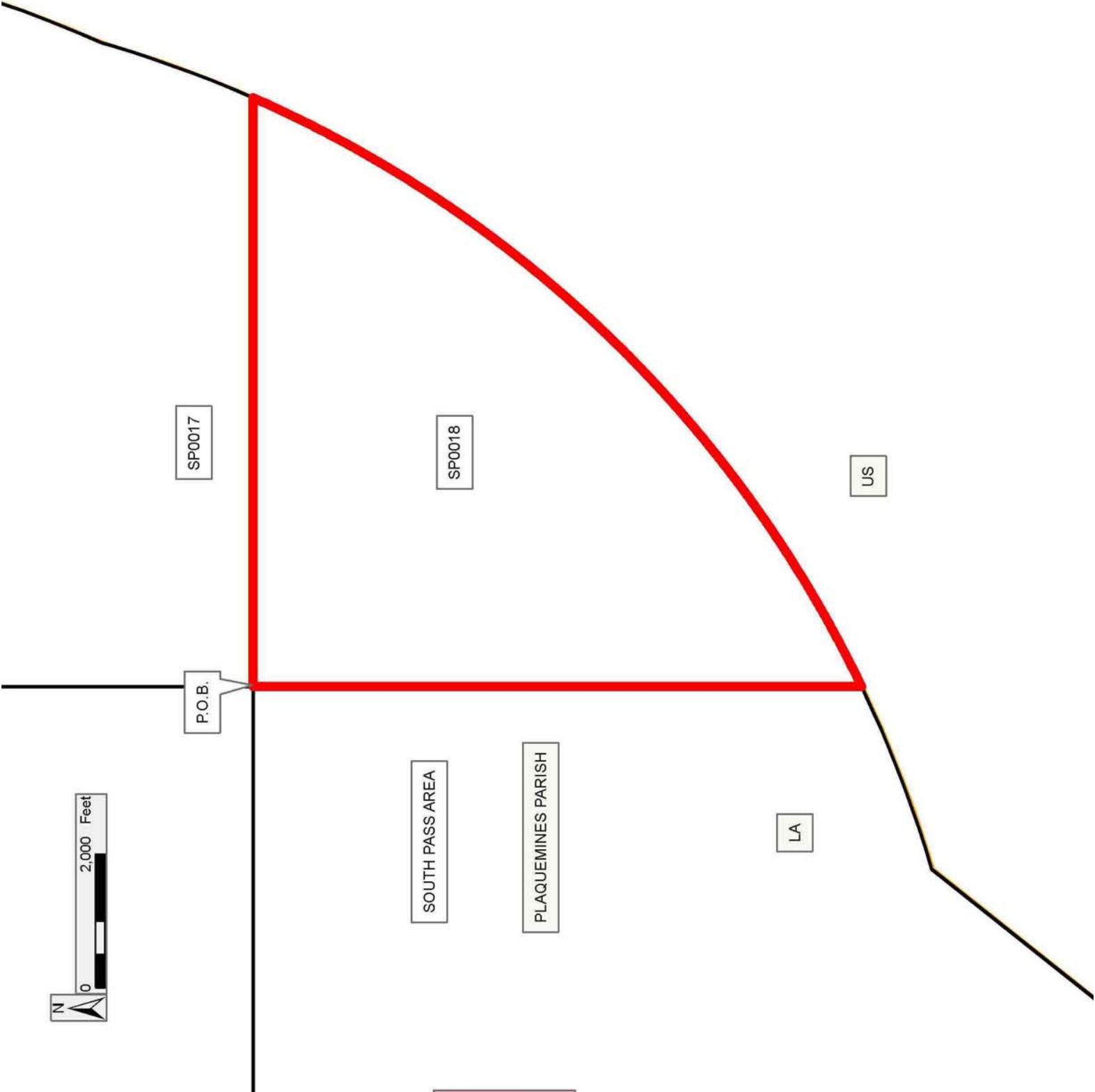
under this lease by the mineral lessee, its agents, successors or assigns, shall not interfere with nor hinder the reasonable surface use by the Department of Natural Resources, its Offices or Commissions, as herein above reserved.

Applicant: CYPRESS ENERGY CORPORATION

Bidder	Cash Payment	Price/Acre	Rental	Oil	Gas	Other

**Legend**

- 06030015
- Blocks
- Counties



Office of Mineral Resources, Acres: 1141.23 Tract Number: 38113