

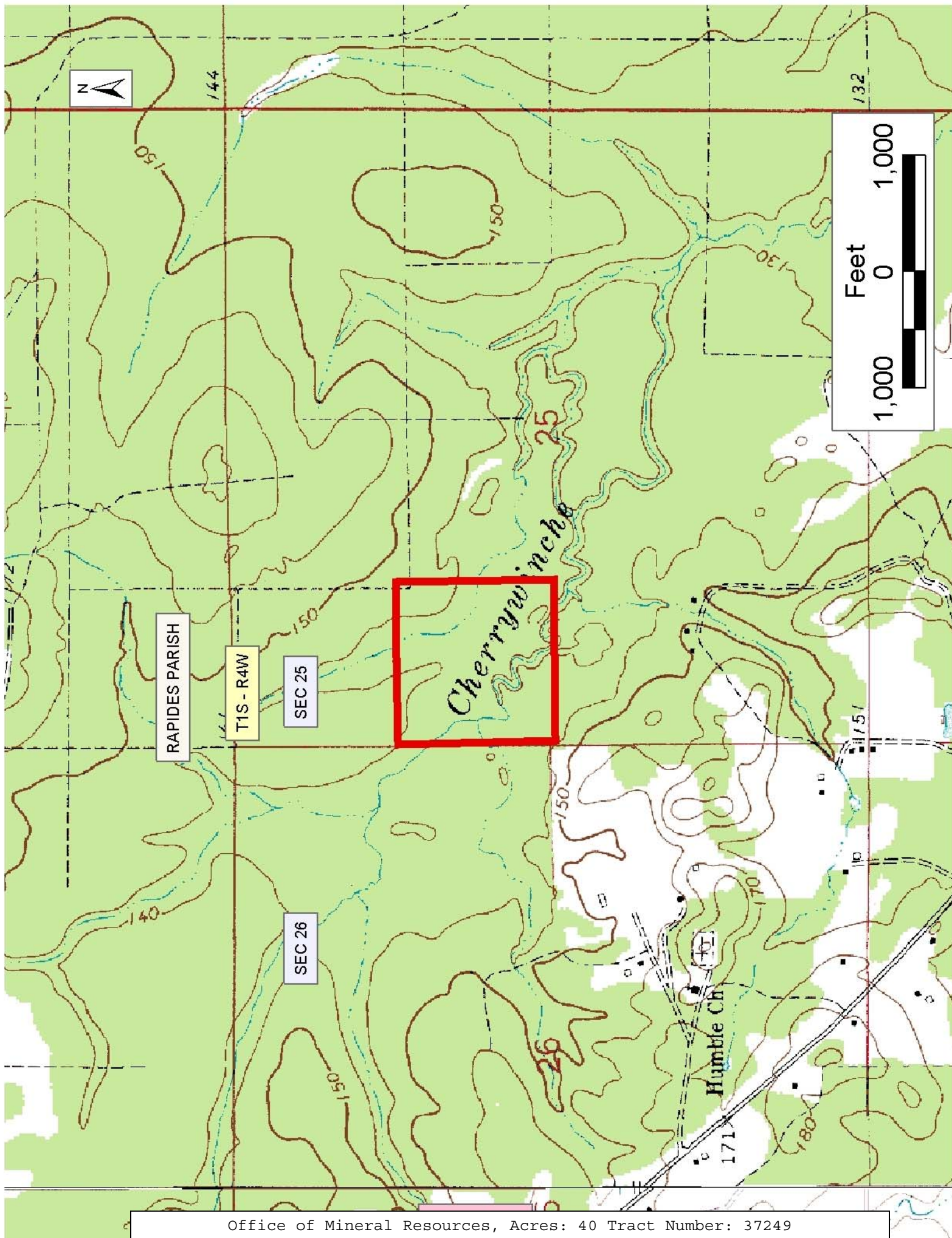
TRACT 37249 - Rapides Parish, Louisiana

All lands, including lands now or formerly constituting the beds and bottoms of all water bodies of every nature and description, owned by and not presently under mineral lease as of March 9, 2005 from the State of Louisiana, situated in Rapides Parish, Louisiana, and being more fully described as follows: That certain tract of land being the Southwest of the Northwest Quarter, Section 25, Township 1 South, Range 4 West, Rapides Parish, Louisiana, being the same property that was given to the State of Louisiana from USA in a Swamp Land Patent, said property never being deeded from the State of Louisiana to a third party; containing approximately **40.00 acres**, all as more particularly outlined on a plat on file in the Office of Mineral Resources, Department of Natural Resources. All bearings, distances and coordinates are based on Louisiana Coordinate System of 1927, (North or South Zone), where applicable.

NOTE: The above description of the Tract nominated for lease has been provided and corrected, where required, exclusively by the nomination party. Any mineral lease selected from this Tract and awarded by the Louisiana State Mineral Board shall be without warranty of any kind, either express, implied, or statutory, including, but not limited to, the implied warranties of merchantability and fitness for a particular purpose. Should the mineral lease awarded by the Louisiana State Mineral Board be subsequently modified, cancelled or abrogated due to the existence of conflicting leases, operating agreements, private claims or other future obligations or conditions which may affect all or any portion of the leased Tract, it shall not relieve the Lessee of the obligation to pay any bonus due thereon to the Louisiana State Mineral Board, nor shall the Louisiana State Mineral Board be obligated to refund any consideration paid by the Lessor prior to such modification, cancellation, or abrogation, including, but not limited to, bonuses, rentals and royalties.

Applicant: Thomas A. Galloway & Associates, Inc.

Bidder	Cash Payment	Price/ Acre	Rental	Oil	Gas	Other



TRACT 37250 - Vermilion Parish, Louisiana

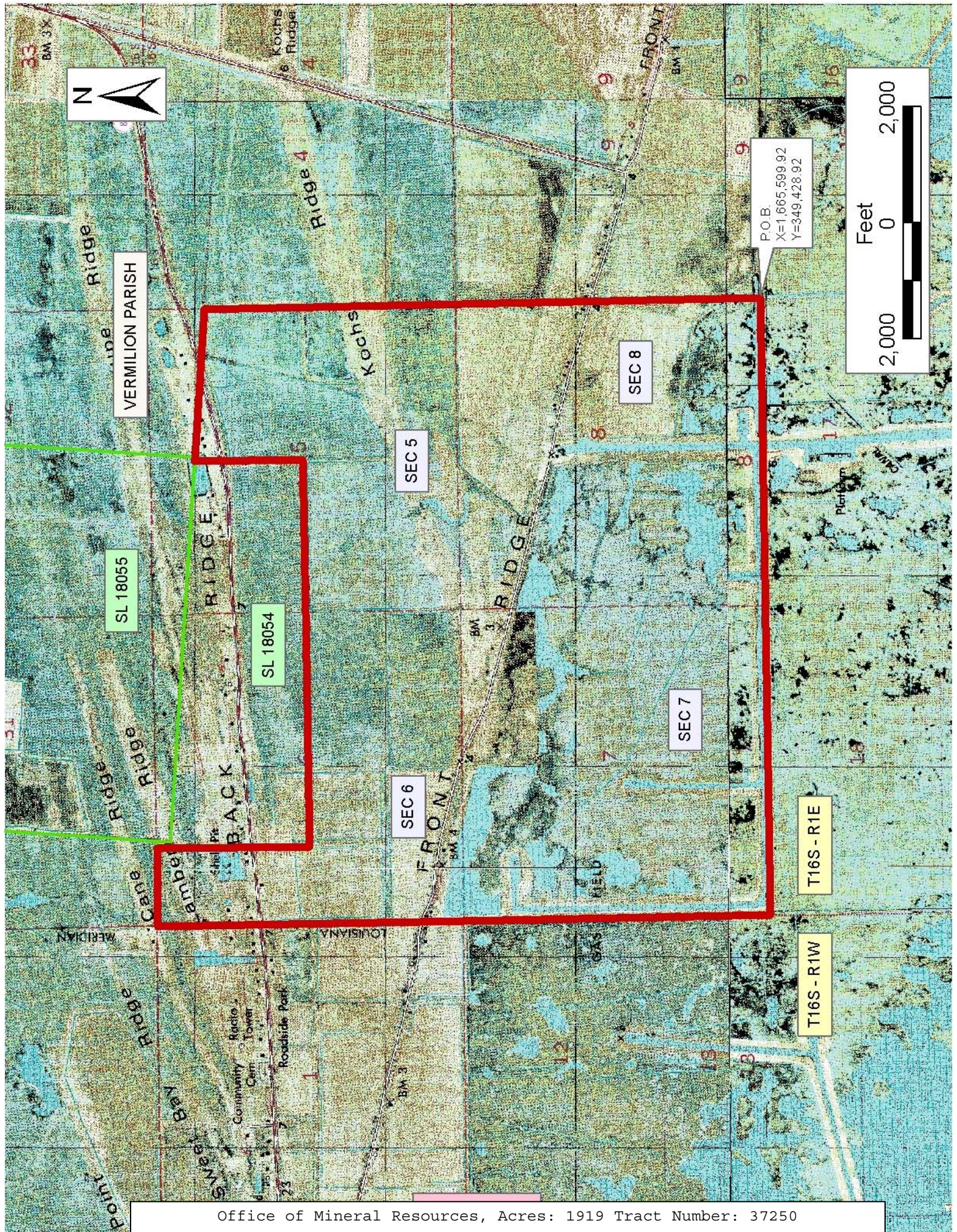
The mineral rights only on and under all lands now or formerly constituting the beds and bottoms of all water bodies of every nature and description, and under all other lands owned by and not presently under mineral lease as of March 9, 2005, from the State of Louisiana situated in Vermilion Parish, Louisiana, and being more fully described as follows: Beginning at a point having Coordinates of X = 1,665,599.92 and Y = 349,428.92; thence South 89 degrees 53 minutes 17 seconds West 10,631.80 feet to a point having Coordinates of X = 1,654,968.14 and Y = 349,408.15; thence North 00 degrees 21 minutes 08 seconds West 5,280.10 feet to a point having Coordinates of X = 1,654,935.68 and Y = 354,688.15; thence North 00 degrees 15 minutes 32 seconds West 5,279.86 feet to a point having Coordinates of X = 1,654,911.83 and Y = 359,967.96; thence South 89 degrees 53 minutes 03 seconds East 1,353.62 feet to the Northwest corner of State Lease No. 18054 having Coordinates of X = 1,656,265.44 and Y = 359,965.22; thence along the boundary of said State Lease No. 18054 the following courses: South 00 degrees 07 minutes 18 seconds West 2,633.60 feet, North 89 degrees 50 minutes 48 seconds East 4,008.44 feet, North 89 degrees 53 minutes 17 seconds East 2,657.69 feet, and North 00 degrees 08 minutes 45 seconds East 1,868.27 feet to its Northeast corner and a point on the South line of State Lease No. 18055 having Coordinates of X = 1,662,930.71 and Y = 359,215.82; thence South 85 degrees 28 minutes 12 seconds East 60.48 feet on the South line of said State Lease No. 18055 to its Southeast corner having Coordinates of X = 1,662,990.99 and Y = 359,211.04; thence South 85 degrees 28 minutes 08 seconds East 2,558.03 feet to a point having Coordinates of X = 1,665,541.02 and Y = 359,008.95; thence South 00 degrees 21 minutes 08 seconds East 9,580.21 feet to the point of beginning, containing approximately **1,919 acres**, all as more particularly outlined on a plat on file in the Office of Mineral Resources, Department of Natural Resources. All bearings, distances and coordinates are based on Louisiana Coordinate System of 1927, (North or South Zone), where applicable.

NOTE: The above description of the Tract nominated for lease has been provided and corrected, where required, exclusively by the nomination party. Any mineral lease selected from this Tract and awarded by the Louisiana State Mineral Board shall be without warranty of any kind, either express, implied, or statutory, including, but not limited to, the implied warranties of merchantability and fitness for a particular purpose. Should the mineral lease awarded by the Louisiana State Mineral Board be subsequently modified, cancelled or abrogated due to the existence of conflicting leases, operating agreements, private claims or other future obligations or conditions which may affect all or any portion of the leased Tract, it shall not relieve the Lessee of the obligation to pay any bonus due thereon to the Louisiana State Mineral Board, nor shall the Louisiana State Mineral Board be obligated to refund any consideration paid by the Lessor prior to such modification, cancellation, or abrogation, including, but not limited to, bonuses, rentals and royalties.

NOTE: The State of Louisiana does hereby reserve, and this lease shall be subject to, the imprescriptible right of surface use in the nature of a servitude in favor of the Department of Natural Resources, including its Offices and Commissions, for the sole purpose of implementing, constructing, servicing and maintaining approved coastal zone management and/or restoration projects. Utilization of any and all rights derived under this lease by the mineral lessee, its agents, successors or assigns, shall not interfere with nor hinder the reasonable surface use by the Department of Natural Resources, its Offices or Commissions, as herein above reserved.

Applicant: Parke Energy, LLC

Bidder	Cash Payment	Price/ Acre	Rental	Oil	Gas	Other



TRACT 37251 - Vermilion Parish, Louisiana

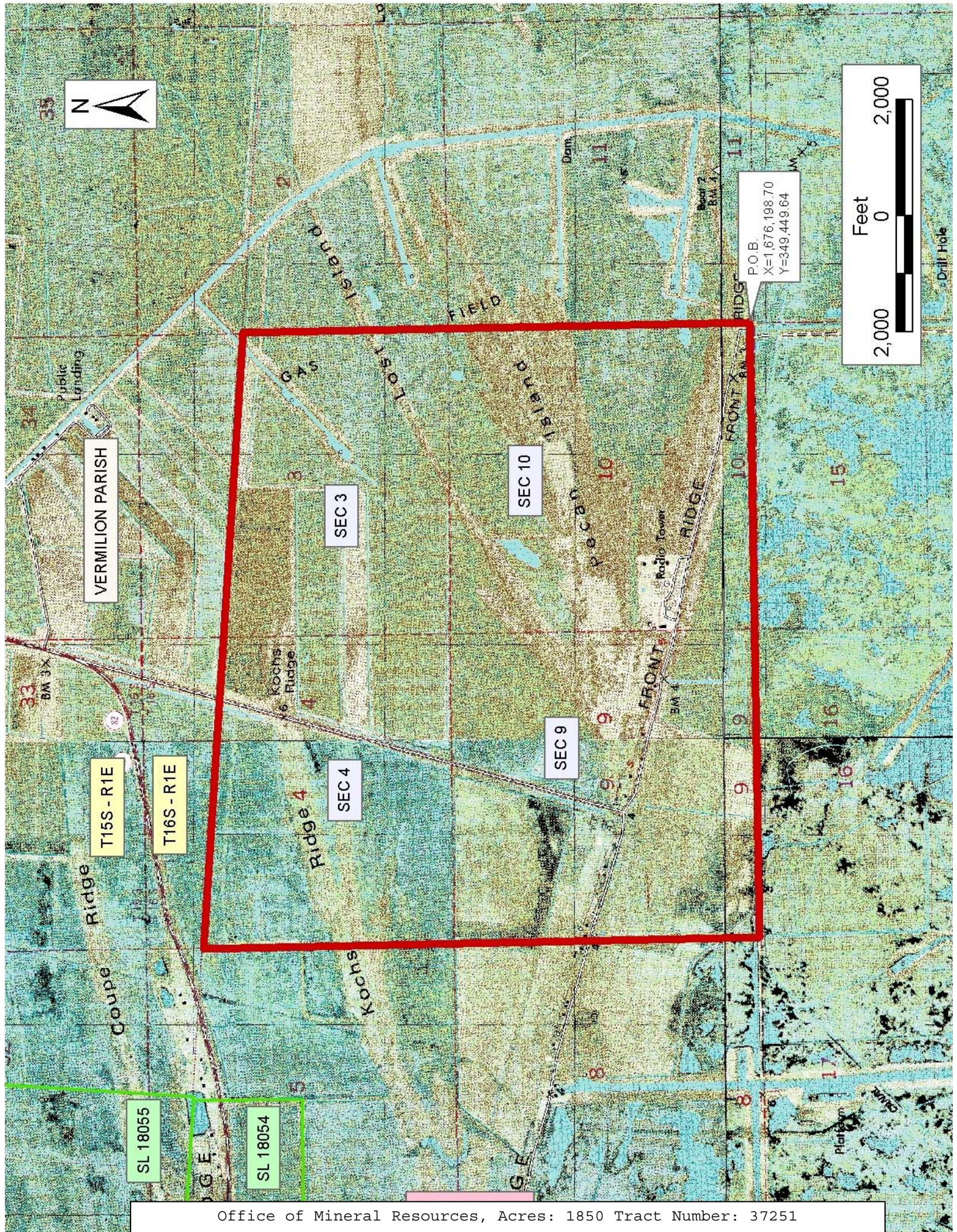
The mineral rights only on and under all lands now or formerly constituting the beds and bottoms of all water bodies of every nature and description, and under all other lands owned by and not presently under mineral lease as of March 9, 2005, from the State of Louisiana situated in Vermilion Parish, Louisiana, and being more fully described as follows: Beginning at a point having Coordinates of X = 1,676,198.70 and Y = 349,449.64; thence South 89 degrees 53 minutes 17 seconds West 10,598.80 feet to a point having Coordinates of X = 1,665,599.92 and Y = 349,428.92; thence North 00 degrees 21 minutes 08 seconds West 9,580.21 feet to a point having Coordinates of X = 1,665,541.02 and Y = 359,008.95; thence South 85 degrees 28 minutes 09 seconds East 10,637.32 feet to a point having Coordinates of X = 1,676,145.10 and Y = 358,168.64; thence South 00 degrees 21 minutes 08 seconds East 8,719.16 feet to the point of beginning, containing approximately **1,850 acres**, all as more particularly outlined on a plat on file in the Office of Mineral Resources, Department of Natural Resources. All bearings, distances and coordinates are based on Louisiana Coordinate System of 1927, (North or South Zone), where applicable.

NOTE: The above description of the Tract nominated for lease has been provided and corrected, where required, exclusively by the nomination party. Any mineral lease selected from this Tract and awarded by the Louisiana State Mineral Board shall be without warranty of any kind, either express, implied, or statutory, including, but not limited to, the implied warranties of merchantability and fitness for a particular purpose. Should the mineral lease awarded by the Louisiana State Mineral Board be subsequently modified, cancelled or abrogated due to the existence of conflicting leases, operating agreements, private claims or other future obligations or conditions which may affect all or any portion of the leased Tract, it shall not relieve the Lessee of the obligation to pay any bonus due thereon to the Louisiana State Mineral Board, nor shall the Louisiana State Mineral Board be obligated to refund any consideration paid by the Lessor prior to such modification, cancellation, or abrogation, including, but not limited to, bonuses, rentals and royalties.

NOTE: The State of Louisiana does hereby reserve, and this lease shall be subject to, the imprescriptible right of surface use in the nature of a servitude in favor of the Department of Natural Resources, including its Offices and Commissions, for the sole purpose of implementing, constructing, servicing and maintaining approved coastal zone management and/or restoration projects. Utilization of any and all rights derived under this lease by the mineral lessee, its agents, successors or assigns, shall not interfere with nor hinder the reasonable surface use by the Department of Natural Resources, its Offices or Commissions, as herein above reserved.

Applicant: Parke Energy, LLC

Bidder	Cash Payment	Price/ Acre	Rental	Oil	Gas	Other



TRACT 37252 - Vermilion Parish, Louisiana

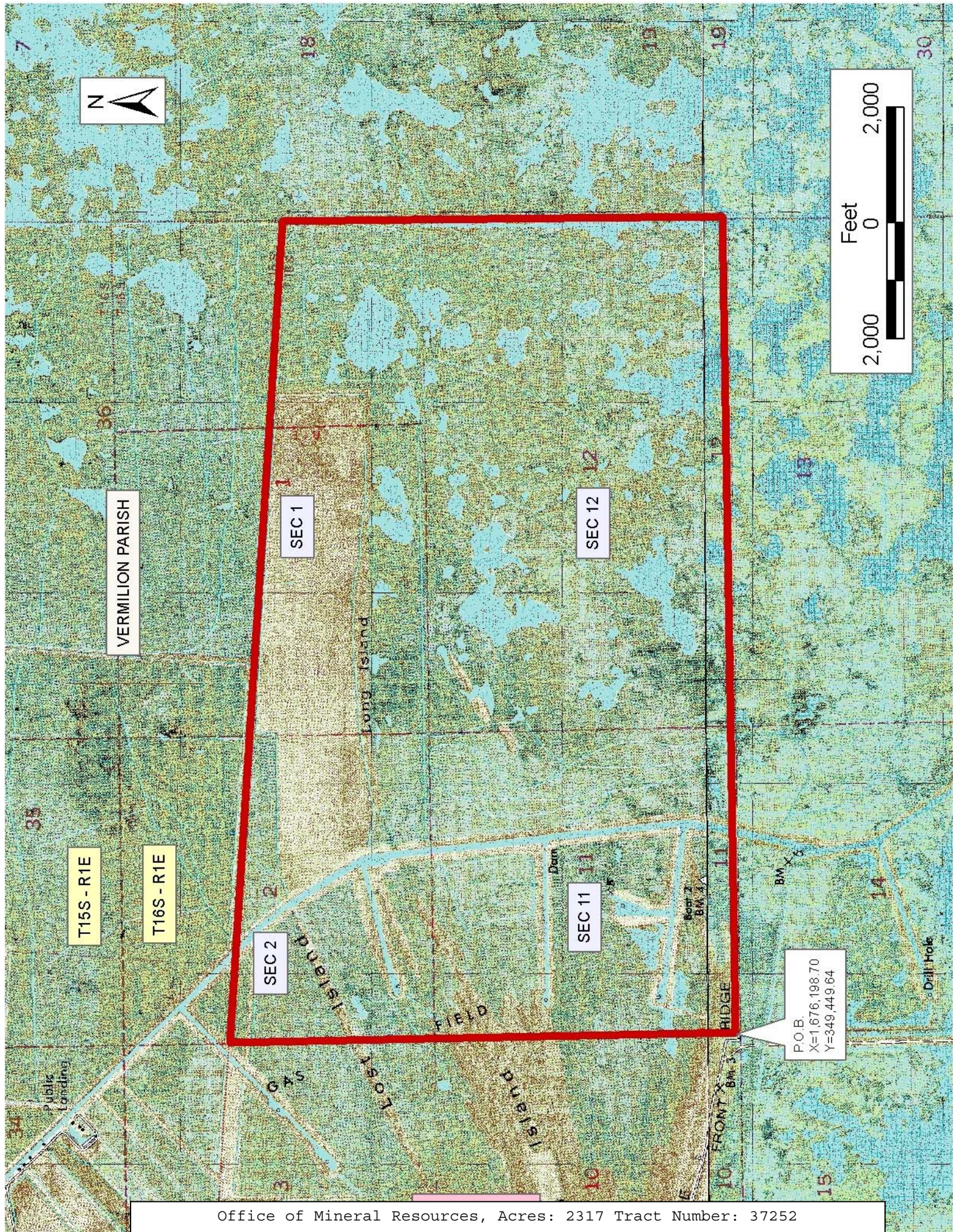
The mineral rights only on and under all lands now or formerly constituting the beds and bottoms of all water bodies of every nature and description, and under all other lands owned by and not presently under mineral lease as of March 9, 2005, from the State of Louisiana situated in Vermilion Parish, Louisiana, and being more fully described as follows: Beginning at a point having Coordinates of X = 1,676,198.70 and Y = 349,449.64; thence North 00 degrees 21 minutes 08 seconds West 8,719.16 feet to a point having Coordinates of X = 1,676,145.10 and Y = 358,168.64; thence South 85 degrees 28 minutes 09 seconds East 14,183.94 feet to a point having Coordinates of X = 1,690,284.71 and Y = 357,048.20; thence South 00 degrees 10 minutes 59 seconds West 2,291.20 feet to a point having Coordinates of X = 1,690,277.39 and Y = 354,757.01; thence South 00 degrees 10 minutes 43 seconds West 5,280.10 feet to a point having Coordinates of X = 1,690,260.93 and Y = 349,476.94; thence South 89 degrees 53 minutes 20 seconds West 14,062.26 feet to the point of beginning, containing approximately **2,317 acres**, all as more particularly outlined on a plat on file in the Office of Mineral Resources, Department of Natural Resources. All bearings, distances and coordinates are based on Louisiana Coordinate System of 1927, (North or South Zone), where applicable.

NOTE: The above description of the Tract nominated for lease has been provided and corrected, where required, exclusively by the nomination party. Any mineral lease selected from this Tract and awarded by the Louisiana State Mineral Board shall be without warranty of any kind, either express, implied, or statutory, including, but not limited to, the implied warranties of merchantability and fitness for a particular purpose. Should the mineral lease awarded by the Louisiana State Mineral Board be subsequently modified, cancelled or abrogated due to the existence of conflicting leases, operating agreements, private claims or other future obligations or conditions which may affect all or any portion of the leased Tract, it shall not relieve the Lessee of the obligation to pay any bonus due thereon to the Louisiana State Mineral Board, nor shall the Louisiana State Mineral Board be obligated to refund any consideration paid by the Lessor prior to such modification, cancellation, or abrogation, including, but not limited to, bonuses, rentals and royalties.

NOTE: The State of Louisiana does hereby reserve, and this lease shall be subject to, the imprescriptible right of surface use in the nature of a servitude in favor of the Department of Natural Resources, including its Offices and Commissions, for the sole purpose of implementing, constructing, servicing and maintaining approved coastal zone management and/or restoration projects. Utilization of any and all rights derived under this lease by the mineral lessee, its agents, successors or assigns, shall not interfere with nor hinder the reasonable surface use by the Department of Natural Resources, its Offices or Commissions, as herein above reserved.

Applicant: Parke Energy, LLC

Bidder	Cash Payment	Price/ Acre	Rental	Oil	Gas	Other



VERMILION PARISH

T15S - R1E

T16S - R1E

SEC 2

SEC 1

SEC 11

SEC 12

P.O.B.
X=1,676,198.70
Y=349,449.64