

TRACT 37238 - Portion of Block 31, Main Pass Area, Revised, Plaquemines Parish, Louisiana

All of the lands now or formerly constituting the beds and bottoms of all water bodies of every nature and description the title of which vests in the State of Louisiana, together with all islands arising therein and other lands formed by accretion or by reliction, where allowed by law, excepting tax adjudicated lands, and not presently under mineral lease on March 9, 2005, situated in Plaquemines Parish, Louisiana, and more particularly described as follows: Beginning at a point on the West line of Block 31, Main Pass Area, Revised, also being a point on the West line of State Lease No. 2125, having Coordinates of X = 2,620,600.00 and Y = 294,830.00; thence North 865.00 feet along said West line of said Block 31 to the Southwest corner of State Lease No. 17294, as amended, having Coordinates of X = 2,620,600.00 and Y = 295,695.00; thence North 68 degrees 01 minutes 53 seconds East 5,840.98 feet along the Southeast line of said State Lease No. 17294 to its Southeast corner, having Coordinates of X = 2,626,016.86 and Y = 297,880.10; thence North 68 degrees 01 minutes 52 seconds East 2,111.46 feet to a point having Coordinates of X = 2,627,975.00 and Y = 298,670.00; thence South 5,840.00 feet to a point on the South line of said Block 31 having Coordinates of X = 2,627,975.00 and Y = 292,830.00; thence West 3,725.00 feet along the South line of said Block 31 to the Southeast corner of said State Lease No. 2125 having Coordinates of X = 2,624,250.00 and Y = 292,830.00; thence along the boundary of said State Lease No. 2125 the following courses and distances: North 52 degrees 54 minutes 26 seconds East 2,570.02 feet to a point having Coordinates of X = 2,626,300.00 and Y = 294,380.00; North 10 degrees 46 minutes 25 seconds East 2,514.32 feet, to a point having Coordinates of X = 2,626,770.00 and Y = 296,850.00; South 83 degrees 19 minutes 25 seconds West 3,010.42 feet to a point having Coordinates of X = 2,623,780.00 and Y = 296,500.00; South 55 degrees 44 minutes 20 seconds West 3,339.46 feet, to a point having Coordinates of X = 2,621,020.00 and Y = 294,620.00; and North 63 degrees 26 minutes 07 seconds West 469.57 feet to the point of beginning, containing approximately **348.26 acres**, all as more particularly outlined on a plat on file in the Office of Mineral Resources, Department of Natural Resources. All bearings, distances and coordinates are based on Louisiana Coordinate System of 1927, (North or South Zone), where applicable.

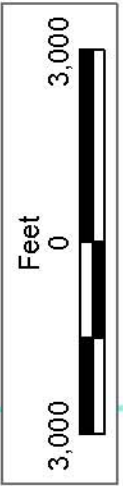
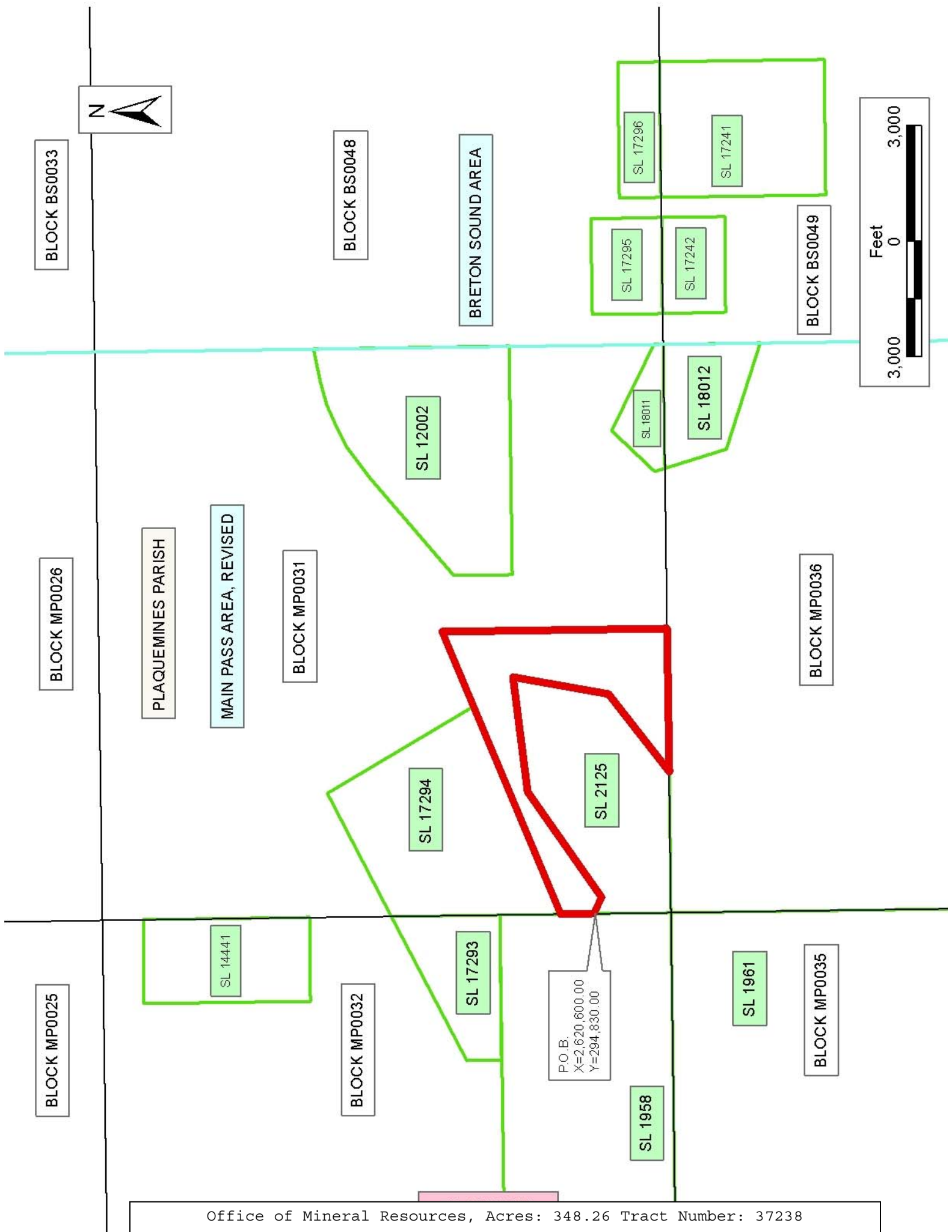
NOTE: The above description of the Tract nominated for lease has been provided and corrected, where required, exclusively by the nomination party. Any mineral lease selected from this Tract and awarded by the Louisiana State Mineral Board shall be without warranty of any kind, either express, implied, or statutory, including, but not limited to, the implied warranties of merchantability and fitness for a particular purpose. Should the mineral lease awarded by the Louisiana State Mineral Board be subsequently modified, cancelled or abrogated due to the existence of conflicting leases, operating agreements, private claims or other future obligations or conditions which may affect all or any portion of the leased Tract, it shall not relieve the Lessee of the obligation to

pay any bonus due thereon to the Louisiana State Mineral Board, nor shall the Louisiana State Mineral Board be obligated to refund any consideration paid by the Lessor prior to such modification, cancellation, or abrogation, including, but not limited to, bonuses, rentals and royalties.

NOTE: The State of Louisiana does hereby reserve, and this lease shall be subject to, the imprescriptible right of surface use in the nature of a servitude in favor of the Department of Natural Resources, including its Offices and Commissions, for the sole purpose of implementing, constructing, servicing and maintaining approved coastal zone management and/or restoration projects. Utilization of any and all rights derived under this lease by the mineral lessee, its agents, successors or assigns, shall not interfere with nor hinder the reasonable surface use by the Department of Natural Resources, its Offices or Commissions, as herein above reserved.

Applicant: Morris P. Hebert, Inc.

Bidder	Cash Payment	Price/Acre	Rental	Oil	Gas	Other



P.O.B.
 X=2,620,600.00
 Y=294,830.00

TRACT 37239 - Portion of Block 36, Main Pass Area, Revised, Plaquemines Parish, Louisiana

All of the lands now or formerly constituting the beds and bottoms of all water bodies of every nature and description the title of which vests in the State of Louisiana, together with all islands arising therein and other lands formed by accretion or by reliction, where allowed by law, excepting tax adjudicated lands, and not presently under mineral lease on March 9, 2005, situated in Plaquemines Parish, Louisiana, and more particularly described as follows: Beginning at the Northwest corner of Block 36, Main Pass Area, Revised having Coordinates of X = 2,620,600.00 and Y = 292,830.00; thence East 11,528.78 feet along the North line of said Block 36 to the Northwest corner of State Lease No. 18012, having Coordinates of X = 2,632,128.78 and Y = 292,830.00; thence along the boundary of said State Lease No. 18012 the following courses and distances: South 16 degrees 19 minutes 24 seconds East 1,676.58 feet, and South 71 degrees 38 minutes 02 seconds East 2,897.60 feet, to its Southeast corner, also being a point on the East line of said Block 36 having Coordinates of X = 2,635,350.00 and Y = 290,308.00; thence South 4,853.00 feet along said East line to a point having Coordinates of X = 2,635,350.00 and Y = 285,455.00; thence West 12,289.41 feet to the most Northerly Northeast corner of State Lease No. 18013 having Coordinates of X = 2,623,060.59 and Y = 285,455.00; thence West 2,460.59 feet along the North line of said State Lease No. 18013 to its Northwest corner, also being a point on the West line of Block 36, having Coordinates of X = 2,620,600.00 and Y = 285,455.00; thence North 7,375.00 feet along said West line to the point of beginning, containing approximately **2,358.17 acres**, all as more particularly outlined on a plat on file in the Office of Mineral Resources, Department of Natural Resources. All bearings, distances and coordinates are based on Louisiana Coordinate System of 1927, (North or South Zone), where applicable.

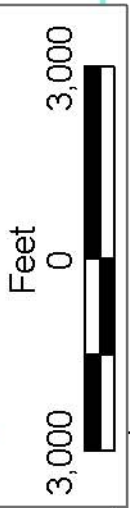
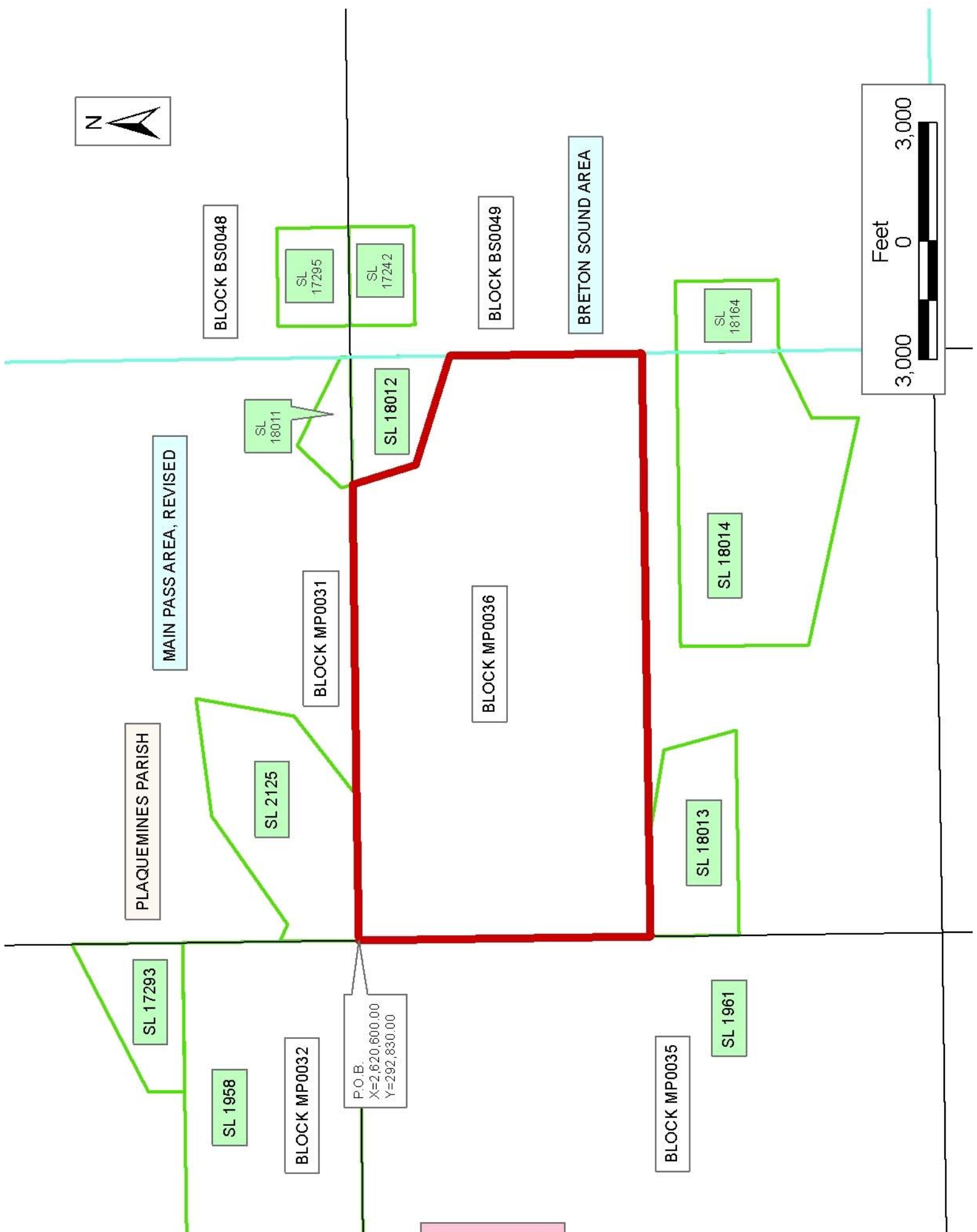
NOTE: The above description of the Tract nominated for lease has been provided and corrected, where required, exclusively by the nomination party. Any mineral lease selected from this Tract and awarded by the Louisiana State Mineral Board shall be without warranty of any kind, either express, implied, or statutory, including, but not limited to, the implied warranties of merchantability and fitness for a particular purpose. Should the mineral lease awarded by the Louisiana State Mineral Board be subsequently modified, cancelled or abrogated due to the existence of conflicting leases, operating agreements, private claims or other future obligations or conditions which may affect all or any portion of the leased Tract, it shall not relieve the Lessee of the obligation to pay any bonus due thereon to the Louisiana State Mineral Board, nor shall the Louisiana State Mineral Board be obligated to refund any consideration paid by the Lessor prior to such modification, cancellation, or abrogation, including, but not limited to, bonuses, rentals and royalties.

NOTE: The State of Louisiana does hereby reserve, and this lease shall be subject to, the imprescriptible right of surface use in the nature of a

servitude in favor of the Department of Natural Resources, including its Offices and Commissions, for the sole purpose of implementing, constructing, servicing and maintaining approved coastal zone management and/or restoration projects. Utilization of any and all rights derived under this lease by the mineral lessee, its agents, successors or assigns, shall not interfere with nor hinder the reasonable surface use by the Department of Natural Resources, its Offices or Commissions, as herein above reserved.

Applicant: Morris P. Hebert, Inc.

Bidder	Cash Payment	Price/Acre	Rental	Oil	Gas	Other



P.O.B.
X=2,620,600.00
Y=292,830.00

TRACT 37240 - Plaquemines Parish, Louisiana

All of the lands now or formerly constituting the beds and bottoms of all water bodies of every nature and description the title of which vests in the State of Louisiana, together with all islands arising therein and other lands formed by accretion or by reliction, where allowed by law, excepting tax adjudicated lands, and not presently under mineral lease on March 9, 2005, situated in Plaquemines Parish, Louisiana, and more particularly described as follows: Beginning at a point having Coordinates of X = 2,542,155.97 and Y = 249,691.62; thence North 88 degrees 31 minutes 05 seconds East 7,840.02 feet to a point having Coordinates of X = 2,549,993.37 and Y = 249,894.38; thence South 01 degrees 05 minutes 06 seconds East 2,639.74 feet to a point having Coordinates of X = 2,550,043.35 and Y = 247,255.11; thence North 88 degrees 31 minutes 11 seconds East 2,603.67 feet to a point having Coordinates of X = 2,552,646.15 and Y = 247,322.38; thence South 01 degrees 14 minutes 20 seconds East approximately 2,796 feet to a point on the Northern boundary of State Lease No. 2651; thence along the boundary of said State Lease No. 2651 the following courses: Westerly approximately 7,627 feet and Southerly approximately 1,603 feet to the Northeast corner of State Lease No. 15280 as amended; thence Southwesterly along the Northwesterly boundary of said State Lease No. 15280 to its Southwest corner located on the Northern boundary of State Lease No. 3010 as amended; thence Southwesterly and Northwesterly on the boundary of said State Lease No. 3010 to a point having a Coordinate of X = 2,542,200.00; thence North 00 degrees 19 minutes 16 seconds West approximately 7,857 feet to the point of beginning, **LESS AND EXCEPT** that portion, if any, of the above described tract which may lie within State Leases Nos. 15280, 2651 and 3010, containing approximately **1,186 acres**, all as more particularly outlined on a plat on file in the Office of Mineral Resources, Department of Natural Resources. All bearings, distances and coordinates are based on Louisiana Coordinate System of 1927, (North or South Zone), where applicable.

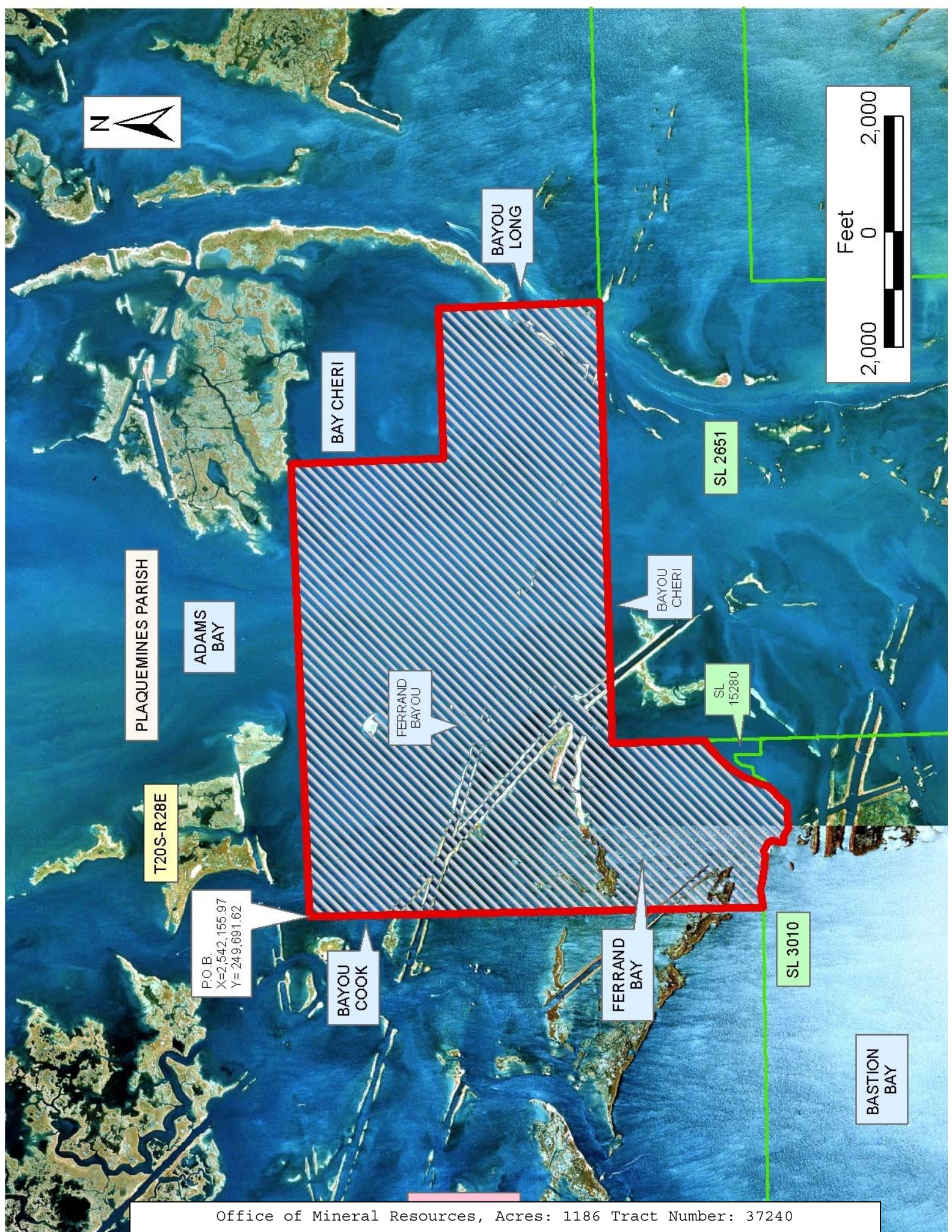
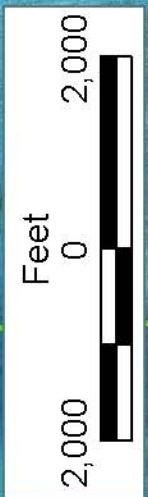
NOTE: The above description of the Tract nominated for lease has been provided and corrected, where required, exclusively by the nomination party. Any mineral lease selected from this Tract and awarded by the Louisiana State Mineral Board shall be without warranty of any kind, either express, implied, or statutory, including, but not limited to, the implied warranties of merchantability and fitness for a particular purpose. Should the mineral lease awarded by the Louisiana State Mineral Board be subsequently modified, cancelled or abrogated due to the existence of conflicting leases, operating agreements, private claims or other future obligations or conditions which may affect all or any portion of the leased Tract, it shall not relieve the Lessee of the obligation to pay any bonus due thereon to the Louisiana State Mineral Board, nor shall the Louisiana State Mineral Board be obligated to refund any consideration paid by the Lessor prior to such modification, cancellation, or abrogation, including, but not limited to, bonuses, rentals and royalties.

NOTE: The State of Louisiana does hereby reserve, and this lease shall be subject to, the imprescriptible right of surface use in the nature of a servitude in favor of the Department of Natural Resources, including its Offices and Commissions, for the sole purpose of implementing, constructing, servicing and maintaining approved coastal zone management and/or restoration projects. Utilization of any and all rights derived under this lease by the mineral lessee, its agents, successors or assigns, shall not interfere with nor hinder the reasonable surface use by the Department of Natural Resources, its Offices or Commissions, as herein above reserved.

NOTE: The Department of Wildlife and Fisheries has designated certain areas in the coastal waters of the State of Louisiana as Oyster Seed Bed Areas. The exact location of those Seed Bed Areas must be obtained from the Department of Wildlife and Fisheries and any work done under a mineral lease from the State of Louisiana may necessarily be conducted in conformity with the rules and regulations promulgated by the said Department of Wildlife and Fisheries for Oyster Seed Bed Areas.

Applicant: Louisiana Land & Exploration Company, Inc.

Bidder	Cash Payment	Price/Acre	Rental	Oil	Gas	Other



PLAQUEMINES PARISH

ADAMS BAY

T20S-R28E

P.O.B.
X=2,542,155.97
Y=249,691.62

BAYOU COOK

FERRAND BAYOU

FERRAND BAY

BASTION BAY

BAY CHERI

BAYOU LONG

BAYOU CHERI

SL 2651

SL 15280

SL 3010