

TRACT 37228 - Jefferson and Lafourche Parishes, Louisiana

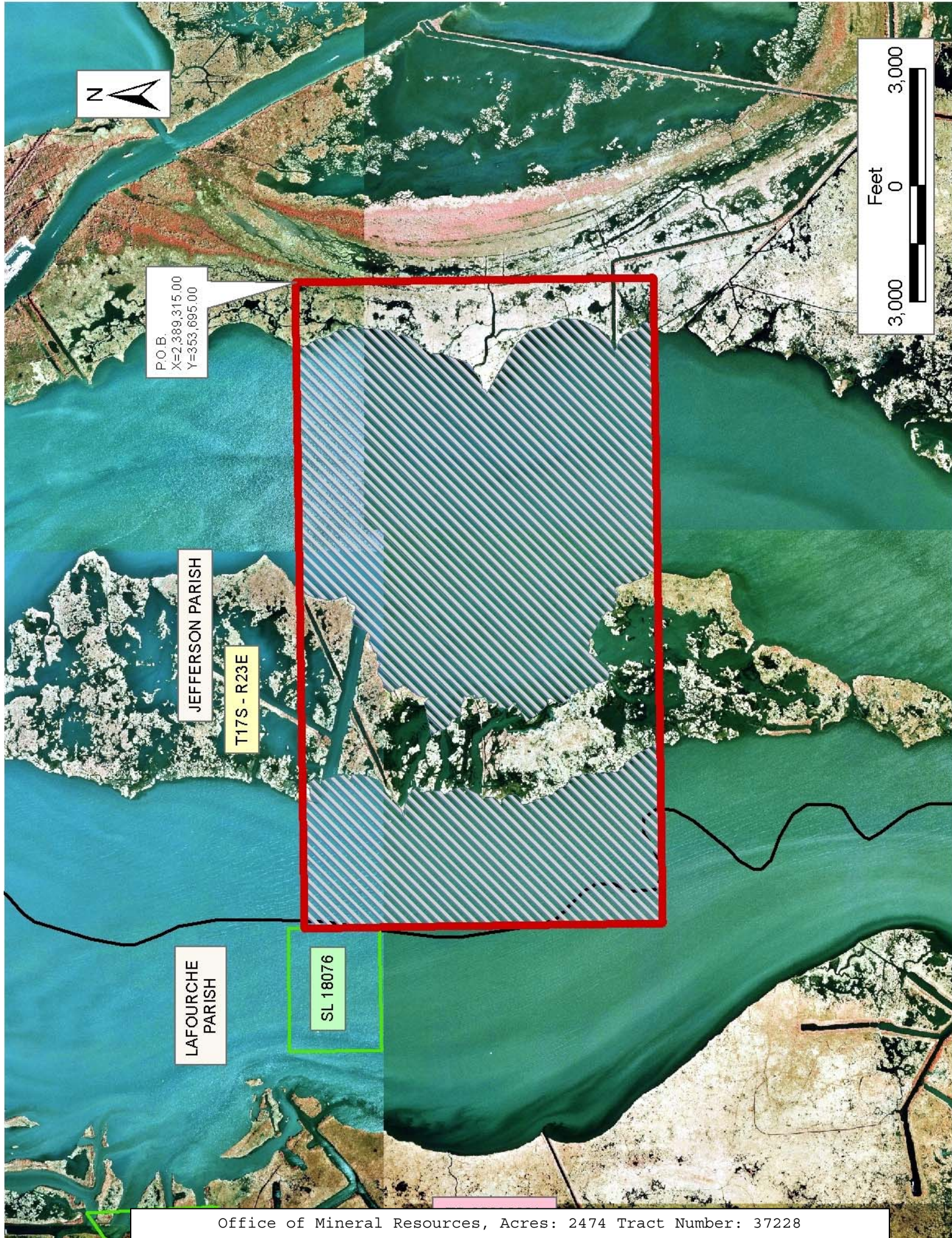
All of the lands now or formerly constituting the beds and bottoms of all water bodies of every nature and description the title of which vests in the State of Louisiana, together with all islands arising therein and other lands formed by accretion or by reliction, where allowed by law, excepting tax adjudicated lands, and not presently under mineral lease on March 9, 2005, situated in Jefferson and Lafourche Parishes, Louisiana, and more particularly described as follows: Beginning at a point having Coordinates of X = 2,389,315.00 and Y = 353,695.00; thence South 9,195.00 feet to a point having Coordinates of X = 2,389,315.00 and Y = 344,500.00; thence West 16,586.00 feet to a point having Coordinates of X = 2,372,729.00 and Y = 344,500.00; thence North 7,272.00 feet to the Southeast corner of State Lease No. 18076 having Coordinates of X = 2,372,729.00 and Y = 351,772.00; thence North 1,923.00 feet along the East line of said State Lease No. 18076 to a point having Coordinates of X = 2,372,729.00 and Y = 353,695.00; thence East 16,586.00 feet to the point of beginning, containing approximately **2,474 acres**, all as more particularly outlined on a plat on file in the Office of Mineral Resources, Department of Natural Resources. All bearings, distances and coordinates are based on Louisiana Coordinate System of 1927, (North or South Zone), where applicable.

NOTE: The above description of the Tract nominated for lease has been provided and corrected, where required, exclusively by the nomination party. Any mineral lease selected from this Tract and awarded by the Louisiana State Mineral Board shall be without warranty of any kind, either express, implied, or statutory, including, but not limited to, the implied warranties of merchantability and fitness for a particular purpose. Should the mineral lease awarded by the Louisiana State Mineral Board be subsequently modified, cancelled or abrogated due to the existence of conflicting leases, operating agreements, private claims or other future obligations or conditions which may affect all or any portion of the leased Tract, it shall not relieve the Lessee of the obligation to pay any bonus due thereon to the Louisiana State Mineral Board, nor shall the Louisiana State Mineral Board be obligated to refund any consideration paid by the Lessor prior to such modification, cancellation, or abrogation, including, but not limited to, bonuses, rentals and royalties.

NOTE: The State of Louisiana does hereby reserve, and this lease shall be subject to, the imprescriptible right of surface use in the nature of a servitude in favor of the Department of Natural Resources, including its Offices and Commissions, for the sole purpose of implementing, constructing, servicing and maintaining approved coastal zone management and/or restoration projects. Utilization of any and all rights derived under this lease by the mineral lessee, its agents, successors or assigns, shall not interfere with nor hinder the reasonable surface use by the Department of Natural Resources, its Offices or Commissions, as herein above reserved.

Applicant: Habenero Exploration Partners

Bidder	Cash Payment	Price/ Acre	Rental	Oil	Gas	Other



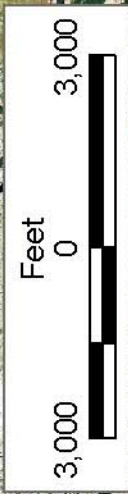
P.O.B.
X=2,389,315.00
Y=353,695.00

JEFFERSON PARISH

T17S - R23E

LAFOURCHE
PARISH

SL 18076



TRACT 37229 - Jefferson Parish, Louisiana

All of the lands now or formerly constituting the beds and bottoms of all water bodies of every nature and description the title of which vests in the State of Louisiana, together with all islands arising therein and other lands formed by accretion or by reliction, where allowed by law, excepting tax adjudicated lands, and not presently under mineral lease on March 9, 2005, situated in Jefferson Parish, Louisiana, and more particularly described as follows: Beginning at a point having Coordinates of X = 2,389,315.00 and Y = 353,695.00; thence East 16,585.00 feet to a point having Coordinates of X = 2,405,900.00 and Y = 353,695.00; thence South 9,195.00 feet to a point having Coordinates of X = 2,405,900.00 and Y = 344,500.00; thence West 16,585.00 feet to a point having Coordinates of X = 2,389,315.00 and Y = 344,500.00; thence North 9,195.00 feet to the point of beginning, containing approximately **30 acres**, all as more particularly outlined on a plat on file in the Office of Mineral Resources, Department of Natural Resources. All bearings, distances and coordinates are based on Louisiana Coordinate System of 1927, (North or South Zone), where applicable.

NOTE: The above description of the Tract nominated for lease has been provided and corrected, where required, exclusively by the nomination party. Any mineral lease selected from this Tract and awarded by the Louisiana State Mineral Board shall be without warranty of any kind, either express, implied, or statutory, including, but not limited to, the implied warranties of merchantability and fitness for a particular purpose. Should the mineral lease awarded by the Louisiana State Mineral Board be subsequently modified, cancelled or abrogated due to the existence of conflicting leases, operating agreements, private claims or other future obligations or conditions which may affect all or any portion of the leased Tract, it shall not relieve the Lessee of the obligation to pay any bonus due thereon to the Louisiana State Mineral Board, nor shall the Louisiana State Mineral Board be obligated to refund any consideration paid by the Lessor prior to such modification, cancellation, or abrogation, including, but not limited to, bonuses, rentals and royalties.

NOTE: The State of Louisiana does hereby reserve, and this lease shall be subject to, the imprescriptible right of surface use in the nature of a servitude in favor of the Department of Natural Resources, including its Offices and Commissions, for the sole purpose of implementing, constructing, servicing and maintaining approved coastal zone management and/or restoration projects. Utilization of any and all rights derived under this lease by the mineral lessee, its agents, successors or assigns, shall not interfere with nor hinder the reasonable surface use by the Department of Natural Resources, its Offices or Commissions, as herein above reserved.

Applicant: Habenero Exploration Partners

Bidder	Cash Payment	Price/ Acre	Rental	Oil	Gas	Other



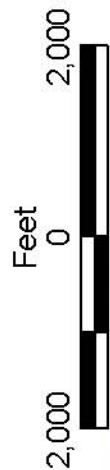
T17S - R24E

BAYOU DUPONT

JEFFERSON PARISH

T17S - R23E

P.O.B.
X=2,389,315.00
Y=353,695.00



TRACT 37230 - Portion of Block 26, Breton Sound Area, Plaquemines Parish, Louisiana

All of the lands now or formerly constituting the beds and bottoms of all water bodies of every nature and description the title of which vests in the State of Louisiana, together with all islands arising therein and other lands formed by accretion or by reliction, where allowed by law, excepting tax adjudicated lands, and not presently under mineral lease on March 9, 2005, situated in Plaquemines Parish, Louisiana, and more particularly described as follows: Beginning at the Northwest corner of Block 26, Breton Sound Area having Coordinates of X = 2,723,850.00 and Y = 337,080.00; thence East 6,053.83 feet on the North line of said Block 26 to a point having Coordinates of X = 2,729,903.83 and Y = 337,080.00; thence Southwesterly on a straight line to a point having Coordinates of X = 2,727,653.00 and Y = 334,120.00; thence Southwesterly on a straight line to a point having Coordinates of X = 2,726,852.00 and Y = 333,103.00; thence Southwesterly on a straight line to a point having Coordinates of X = 2,723,975.00 and Y = 330,868.00; thence Southwesterly on a straight line to a point on the West line of said Block 26 having Coordinates of X = 2,723,850.00 and Y = 330,739.83; thence North 6,340.17 feet on the West line of said Block 26 to the point of beginning, containing approximately **494.74 acres**, all as more particularly outlined on a plat on file in the Office of Mineral Resources, Department of Natural Resources. All bearings, distances and coordinates are based on Louisiana Coordinate System of 1927, (North or South Zone), where applicable.

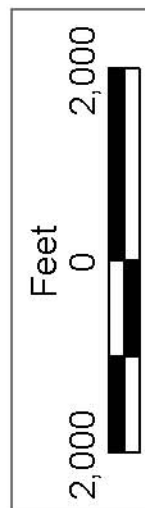
NOTE: The above description of the Tract nominated for lease has been provided and corrected, where required, exclusively by the nomination party. Any mineral lease selected from this Tract and awarded by the Louisiana State Mineral Board shall be without warranty of any kind, either express, implied, or statutory, including, but not limited to, the implied warranties of merchantability and fitness for a particular purpose. Should the mineral lease awarded by the Louisiana State Mineral Board be subsequently modified, cancelled or abrogated due to the existence of conflicting leases, operating agreements, private claims or other future obligations or conditions which may affect all or any portion of the leased Tract, it shall not relieve the Lessee of the obligation to pay any bonus due thereon to the Louisiana State Mineral Board, nor shall the Louisiana State Mineral Board be obligated to refund any consideration paid by the Lessor prior to such modification, cancellation, or abrogation, including, but not limited to, bonuses, rentals and royalties.

NOTE: The State of Louisiana does hereby reserve, and this lease shall be subject to, the imprescriptible right of surface use in the nature of a servitude in favor of the Department of Natural Resources, including its Offices and Commissions, for the sole purpose of implementing, constructing, servicing and maintaining approved coastal zone management and/or restoration projects. Utilization of any and all rights derived under this lease by the mineral lessee, its agents, successors or assigns, shall not interfere with nor hinder the reasonable surface use by the

Department of Natural Resources, its Offices or Commissions, as herein above reserved.

Applicant: Woodland Petroleum Corporation

Bidder	Cash Payment	Price/ Acre	Rental	Oil	Gas	Other



PLAQUEMINES PARISH

BRETON SOUND AREA

BLOCK BS0023

BLOCK BS0026

P.O.B.
X=2,723,850.00
Y=337,080.00

BLOCK BS0022

BLOCK BS0027

SL 2326

SL 4574

SL 15958

SL 18028

SL 18029

TRACT 37231 - Portion of Blocks 27, and 38, Breton Sound Area, Plaquemines Parish, Louisiana

All of the lands now or formerly constituting the beds and bottoms of all water bodies of every nature and description the title of which vests in the State of Louisiana, together with all islands arising therein and other lands formed by accretion or by reliction, where allowed by law, excepting tax adjudicated lands, and not presently under mineral lease on March 9, 2005, situated in Plaquemines Parish, Louisiana, and more particularly described as follows: Beginning at a point on the West line of Block 27, Breton Sound Area, also being the Southwest corner of State Lease No. 4574, as amended having Coordinates of X = 2,709,100.00 and Y = 327,530.00; thence East 7,500.00 feet on the South line of said State Lease No. 4574 to its Southeast corner having Coordinates of X = 2,716,600.00 and Y = 327,530.00; thence East 4,605.98 feet to a point having Coordinates of X = 2,721,205.98 and Y = 327,530.00; thence Southwesterly in a straight line to a point having Coordinates of X = 2,720,696.00 and Y = 326,779.00; thence Southwesterly on a straight line to a point on the South line of said Block 27 and a point on the North line of Block 38, Breton Sound Area having Coordinates of X = 2,718,010 and Y = 322,330; thence Southwesterly on a straight line to a point having Coordinates of X = 2,717,012 and Y = 320,677; thence Southwesterly on a straight line to a point having Coordinates of X = 2,715,236.00 and Y = 318,391.00; thence Southwesterly on a straight line to a point having Coordinates of X = 2,714,633.00 and Y = 317,731.00; thence Southwesterly on a straight line to a point having Coordinates of X = 2,713,324.00 and Y = 316,801.00; thence Southwesterly on a straight line to a point having Coordinates of X = 2,711,772.00 and Y = 316,107.00; thence Southwesterly on a straight line to a point having Coordinates of X = 2,710,380.00 and Y = 315,995.00; thence Southwesterly on a straight line to a point on the West line of said Block 38 having Coordinates of X = 2,709,100.00 and Y = 315,555.59; thence North 6,774.41 feet on the West line of said Block 39 to its Northwest corner and the Southwest corner of said Block 27 having Coordinates of X = 2,709,100.00 and Y = 322,330.00; thence North 5,200.00 feet on the West line of said Block 27 to the point of beginning, containing approximately **2,198.33 acres**, all as more particularly outlined on a plat on file in the Office of Mineral Resources, Department of Natural Resources. All bearings, distances and coordinates are based on Louisiana Coordinate System of 1927, (North or South Zone), where applicable.

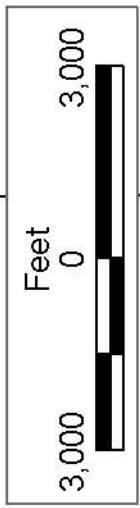
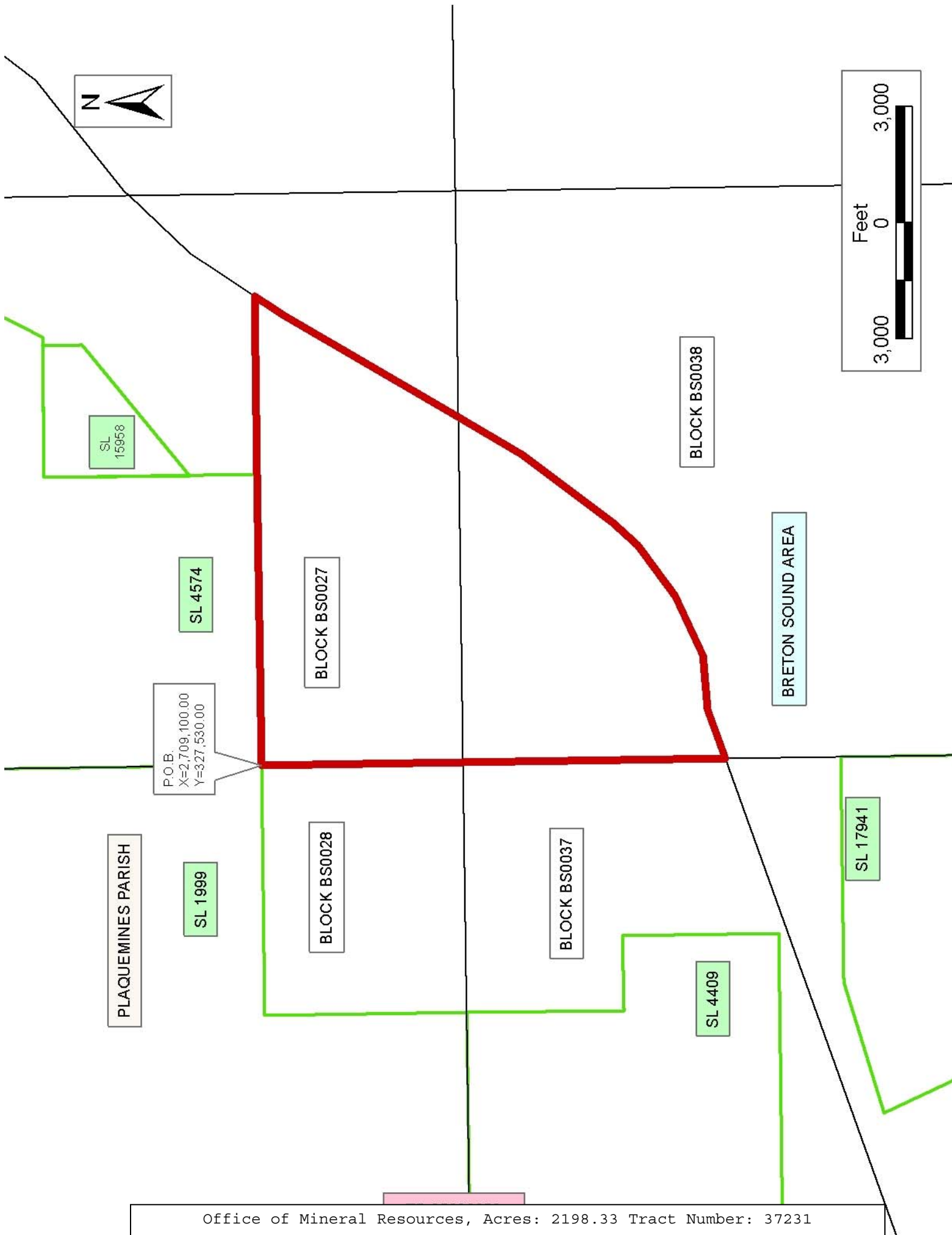
NOTE: The above description of the Tract nominated for lease has been provided and corrected, where required, exclusively by the nomination party. Any mineral lease selected from this Tract and awarded by the Louisiana State Mineral Board shall be without warranty of any kind, either express, implied, or statutory, including, but not limited to, the implied warranties of merchantability and fitness for a particular purpose. Should the mineral lease awarded by the Louisiana State Mineral Board be subsequently modified, cancelled or abrogated due to the existence of conflicting leases, operating agreements, private claims or

other future obligations or conditions which may affect all or any portion of the leased Tract, it shall not relieve the Lessee of the obligation to pay any bonus due thereon to the Louisiana State Mineral Board, nor shall the Louisiana State Mineral Board be obligated to refund any consideration paid by the Lessor prior to such modification, cancellation, or abrogation, including, but not limited to, bonuses, rentals and royalties.

NOTE: The State of Louisiana does hereby reserve, and this lease shall be subject to, the imprescriptible right of surface use in the nature of a servitude in favor of the Department of Natural Resources, including its Offices and Commissions, for the sole purpose of implementing, constructing, servicing and maintaining approved coastal zone management and/or restoration projects. Utilization of any and all rights derived under this lease by the mineral lessee, its agents, successors or assigns, shall not interfere with nor hinder the reasonable surface use by the Department of Natural Resources, its Offices or Commissions, as herein above reserved.

Applicant: Woodland Petroleum Corporation

Bidder	Cash Payment	Price/ Acre	Rental	Oil	Gas	Other



SL
15958

SL 4574

P.O.B.
X=2,709, 100.00
Y=327,530.00

PLAQUEMINES PARISH

SL 1999

BLOCK BS0027

BLOCK BS0028

BLOCK BS0037

BLOCK BS0038

BRETON SOUND AREA

SL 4409

SL 17941

TRACT 37232 - Portion of Block 25, Main Pass Area, Revised, Plaquemines Parish, Louisiana

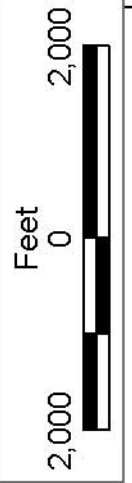
All of the lands now or formerly constituting the beds and bottoms of all water bodies of every nature and description the title of which vests in the State of Louisiana, together with all islands arising therein and other lands formed by accretion or by reliction, where allowed by law, excepting tax adjudicated lands, and not presently under mineral lease on March 9, 2005, situated in Plaquemines Parish, Louisiana, and more particularly described as follows: Beginning at the Northwest corner of Block 25, Main Pass Area, Revised having Coordinates of X = 2,605,850.00 and Y = 322,330.00; thence East 2,200.00 feet along the North line of said Block 25, to the Northwest corner of State Lease No. 16432, having Coordinates of X = 2,608,050.00 and Y = 322,330.00; thence South 28 degrees 28 minutes 27 seconds East 1,646.67 feet along the Southwesterly line of said State Lease No. 16432 to the Northeast corner of State Lease No. 18009, having Coordinates of X = 2,608,835.07 and Y = 320,882.52; thence along the boundary of said State Lease No. 18009 the following courses and distances: South 73 degrees 18 minutes 03 seconds West 2,375.25 feet to a point having Coordinates of X = 2,606,560.00 and Y = 320,200.00, South 18 degrees 04 minutes 02 seconds East 1,725.06 feet to a point having Coordinates of X = 2,607,095.00 and Y = 318,560.00, South 55 degrees 33 minutes 40 seconds East 2,546.29 feet to a point having Coordinates of X = 2,609,195.00 and Y = 317,120.00, South 26 degrees 44 minutes 20 seconds East 2,211.48 feet to a point having Coordinates of X = 2,610,190.00 and Y = 315,145.00, and North 68 degrees 36 minutes 39 seconds East 1,556.30 feet to its Southeast corner, also being a point on the Southwesterly line of said State Lease No. 16432 having Coordinates of X = 2,611,639.11 and Y = 315,712.58; thence South 28 degrees 28 minutes 27 seconds East 861.83 feet along the Southwesterly line of State Lease No. 16432 to a point having Coordinates of X = 2,612,050.00 and Y = 314,955.00; thence West 1,020.00 feet to the Northeast corner of State Lease No. 16692 having Coordinates of X = 2,611,030.00 and Y = 314,955.00; thence West 1,580.00 feet along the North line of said State Lease No. 16692 to its Northwest corner, also being the Northeast corner of State Lease No. 16819 having Coordinates of X = 2,609,450.00 and Y = 314,955.00; thence along the boundary of said State Lease No. 16819 the following courses and distances: West 420.00 feet to a point having Coordinates of X = 2,609,030.00 and Y = 314,955.00; North 28 degrees 28 minutes 25 seconds West 149.99 feet to a point having Coordinates of X = 2,608,958.49 and Y = 315,086.85; West 750.00 feet to a point having Coordinates of X = 2,608,208.49 and Y = 315,086.85; and South 131.85 feet to a point having Coordinates of X = 2,608,208.49 and Y = 314,955.00; thence West 2,358.49 feet to a point on the West line of said Block 25 having Coordinates of X = 2,605,850.00 and Y = 314,955.00; thence North 7,375.00 feet along said West line to the point of beginning, containing approximately **437.87 acres**, all as more particularly outlined on a plat on file in the Office of Mineral Resources, Department of Natural Resources. All bearings, distances and coordinates are based on Louisiana Coordinate System of 1927, (North or South Zone), where applicable.

NOTE: The above description of the Tract nominated for lease has been provided and corrected, where required, exclusively by the nomination party. Any mineral lease selected from this Tract and awarded by the Louisiana State Mineral Board shall be without warranty of any kind, either express, implied, or statutory, including, but not limited to, the implied warranties of merchantability and fitness for a particular purpose. Should the mineral lease awarded by the Louisiana State Mineral Board be subsequently modified, cancelled or abrogated due to the existence of conflicting leases, operating agreements, private claims or other future obligations or conditions which may affect all or any portion of the leased Tract, it shall not relieve the Lessee of the obligation to pay any bonus due thereon to the Louisiana State Mineral Board, nor shall the Louisiana State Mineral Board be obligated to refund any consideration paid by the Lessor prior to such modification, cancellation, or abrogation, including, but not limited to, bonuses, rentals and royalties.

NOTE: The State of Louisiana does hereby reserve, and this lease shall be subject to, the imprescriptible right of surface use in the nature of a servitude in favor of the Department of Natural Resources, including its Offices and Commissions, for the sole purpose of implementing, constructing, servicing and maintaining approved coastal zone management and/or restoration projects. Utilization of any and all rights derived under this lease by the mineral lessee, its agents, successors or assigns, shall not interfere with nor hinder the reasonable surface use by the Department of Natural Resources, its Offices or Commissions, as herein above reserved.

Applicant: Morris P. Hebert, Inc.

Bidder	Cash Payment	Price/ Acre	Rental	Oil	Gas	Other



BLOCK MP0022

MAIN PASS AREA, REVISED

BLOCK MP0025

SL 16432

SL 16692

SL 16819

SL 18009

PLAQUEMINES PARISH

BLOCK MP0023

P.O.B.
X=2,605,850.00
Y=322,330.00

BLOCK MP0024

TRACT 37233 - Portion of Block 25, Main Pass Area, Revised, Plaquemines Parish, Louisiana

All of the lands now or formerly constituting the beds and bottoms of all water bodies of every nature and description the title of which vests in the State of Louisiana, together with all islands arising therein and other lands formed by accretion or by reliction, where allowed by law, excepting tax adjudicated lands, and not presently under mineral lease on March 9, 2005, situated in Plaquemines Parish, Louisiana, and more particularly described as follows: Beginning at the Northeast corner of Block 25, Main Pass Area, Revised having Coordinates of X = 2,620,600.00 and Y = 322,330.00; thence South 7,375.00 feet along the East line of said Block 25 to a point having Coordinates of X = 2,620,600.00 and Y = 314,955.00; thence West 5,350.00 feet to a Southeasterly corner of State Lease No. 16432 having Coordinates of X = 2,615,250.00 and Y = 314,955.00; thence along the boundary of said State Lease No. 16432 the following courses and distances: North 40 degrees 54 minutes 52 seconds East 3,969.89 feet, and North 53 degrees 54 minutes 06 seconds West 7,425.67 feet to its most Northerly Northeast corner, also being a point on the North line of said Block 25, having Coordinates of X = 2,611,850.00 and Y = 322,330.00; thence East 8,750.00 feet along said North line to the point of beginning, containing approximately **856.43 acres**, all as more particularly outlined on a plat on file in the Office of Mineral Resources, Department of Natural Resources. All bearings, distances and coordinates are based on Louisiana Coordinate System of 1927, (North or South Zone), where applicable.

NOTE: The above description of the Tract nominated for lease has been provided and corrected, where required, exclusively by the nomination party. Any mineral lease selected from this Tract and awarded by the Louisiana State Mineral Board shall be without warranty of any kind, either express, implied, or statutory, including, but not limited to, the implied warranties of merchantability and fitness for a particular purpose. Should the mineral lease awarded by the Louisiana State Mineral Board be subsequently modified, cancelled or abrogated due to the existence of conflicting leases, operating agreements, private claims or other future obligations or conditions which may affect all or any portion of the leased Tract, it shall not relieve the Lessee of the obligation to pay any bonus due thereon to the Louisiana State Mineral Board, nor shall the Louisiana State Mineral Board be obligated to refund any consideration paid by the Lessor prior to such modification, cancellation, or abrogation, including, but not limited to, bonuses, rentals and royalties.

NOTE: The State of Louisiana does hereby reserve, and this lease shall be subject to, the imprescriptible right of surface use in the nature of a servitude in favor of the Department of Natural Resources, including its Offices and Commissions, for the sole purpose of implementing, constructing, servicing and maintaining approved coastal zone management and/or restoration projects. Utilization of any and all rights derived under this lease by the mineral lessee, its agents, successors or assigns,

shall not interfere with nor hinder the reasonable surface use by the Department of Natural Resources, its Offices or Commissions, as herein above reserved.

Applicant: Morris P. Hebert, Inc.

Bidder	Cash Payment	Price/ Acre	Rental	Oil	Gas	Other



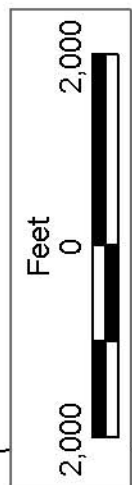
BLOCK MP0021

P.O.B.
X=2,620,600.00
Y=322,330.00

BLOCK MP0022

BLOCK MP0026

BLOCK MP0025



PLAQUEMINES PARISH

MAIN PASS AREA, REVISED

SL 16432

SL 18009

SL 16819

SL 16892

TRACT 37234 - Lafourche Parish, Louisiana

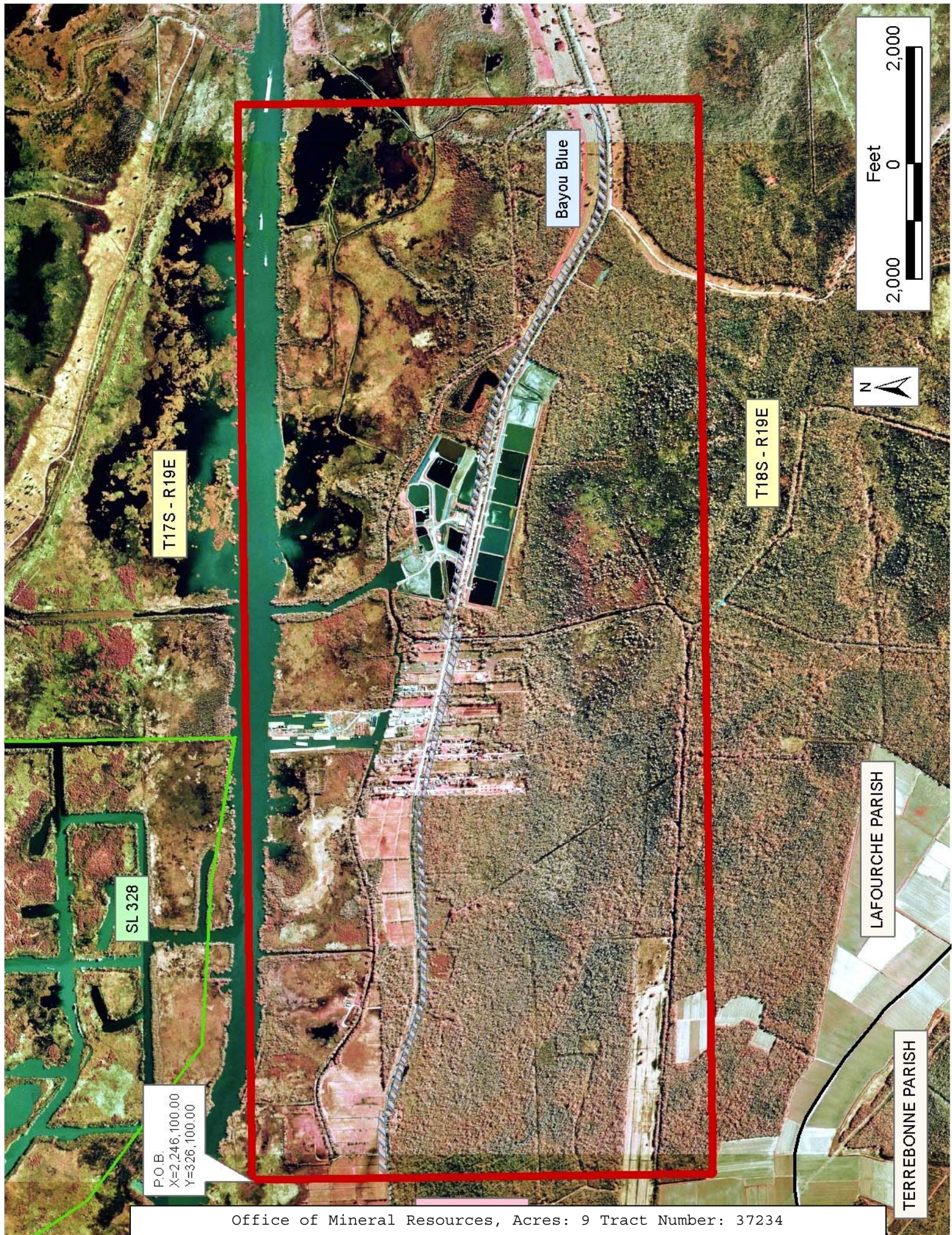
All of the lands now or formerly constituting the beds and bottoms of all water bodies of every nature and description the title of which vests in the State of Louisiana, together with all islands arising therein and other lands formed by accretion or by reliction, where allowed by law, excepting tax adjudicated lands, and not presently under mineral lease on March 9, 2005, situated in Lafourche Parish, Louisiana, and more particularly described as follows: Beginning at a point having Coordinates of X = 2,246,100.00 and Y = 326,100.00; thence East 18,480.00 feet to a point having Coordinates of X = 2,264,580.00 and Y = 326,100.00; thence South 7,920.00 feet to a point having Coordinates of X = 2,264,580.00 and Y = 318,180.00; thence West 18,480.00 feet to a point having Coordinates of X = 2,246,100.00 and Y = 318,180.00; thence North 7,920.00 to the point of beginning, containing approximately **9 acres**, all as more particularly outlined on a plat on file in the Office of Mineral Resources, Department of Natural Resources. All bearings, distances and coordinates are based on Louisiana Coordinate System of 1927, (North or South Zone), where applicable.

NOTE: The above description of the Tract nominated for lease has been provided and corrected, where required, exclusively by the nomination party. Any mineral lease selected from this Tract and awarded by the Louisiana State Mineral Board shall be without warranty of any kind, either express, implied, or statutory, including, but not limited to, the implied warranties of merchantability and fitness for a particular purpose. Should the mineral lease awarded by the Louisiana State Mineral Board be subsequently modified, cancelled or abrogated due to the existence of conflicting leases, operating agreements, private claims or other future obligations or conditions which may affect all or any portion of the leased Tract, it shall not relieve the Lessee of the obligation to pay any bonus due thereon to the Louisiana State Mineral Board, nor shall the Louisiana State Mineral Board be obligated to refund any consideration paid by the Lessor prior to such modification, cancellation, or abrogation, including, but not limited to, bonuses, rentals and royalties.

NOTE: The State of Louisiana does hereby reserve, and this lease shall be subject to, the imprescriptible right of surface use in the nature of a servitude in favor of the Department of Natural Resources, including its Offices and Commissions, for the sole purpose of implementing, constructing, servicing and maintaining approved coastal zone management and/or restoration projects. Utilization of any and all rights derived under this lease by the mineral lessee, its agents, successors or assigns, shall not interfere with nor hinder the reasonable surface use by the Department of Natural Resources, its Offices or Commissions, as herein above reserved.

Applicant: Gulf Coast Oil Properties, Inc.

Bidder	Cash Payment	Price/ Acre	Rental	Oil	Gas	Other



TRACT 37235 - Portion of Block 25, Main Pass Area, Revised, Plaquemines Parish, Louisiana

All of the lands now or formerly constituting the beds and bottoms of all water bodies of every nature and description the title of which vests in the State of Louisiana, together with all islands arising therein and other lands formed by accretion or by reliction, where allowed by law, excepting tax adjudicated lands, and not presently under mineral lease on March 9, 2005, situated in Plaquemines Parish, Louisiana, and more particularly described as follows: Beginning at a point on the West line of Block 25, Main Pass Area, Revised having Coordinates of X = 2,605,850.00 and Y = 314,955.00; thence East 2,358.49 feet to a point on the West line of State Lease No. 16819, having Coordinates of X = 2,608,208.49 and Y = 314,955.00; thence South 2,473.08 feet along said West line to its Southwest corner having Coordinates of X = 2,608,208.49 and Y = 312,481.92; thence South 59 degrees 39 minutes 02 seconds East 1,438.67 feet along the Southerly line of said State Lease No. 16819 to its Southeast corner, also being a point on the West line of State Lease No. 16692, having Coordinates of X = 2,609,450.00 and Y = 311,755.00; thence along the boundary of said State Lease No. 16692 the following courses and distances: South 300.00 feet to a point having Coordinates of X = 2,609,450.00 and Y = 311,455.00; South 77 degrees 00 minutes 19 seconds East 1,621.53 feet to a point having Coordinates of X = 2,611,030.00 and Y = 311,090.38; and North 3,864.62 feet to its Northeast corner having Coordinates of X = 2,611,030.00 and Y = 314,955.00; thence East 1,020.00 feet to a Southerly corner of State Lease No. 16432 having Coordinates of X = 2,612,050.00 and Y = 314,955.00; thence along the boundary of said State Lease No. 16432 the following courses and distances: North 775.00 feet to a point having Coordinates of X = 2,612,050.00 and Y = 315,730.00; East 2,500.00 feet to a point having Coordinates of X = 2,614,550.00 and Y = 315,730.00; South 775.00 feet to a point having Coordinates of X = 2,614,550.00 and Y = 314,955.00; and East 700.00 feet to its most Southerly Southeast corner, having Coordinates of X = 2,615,250.00 and Y = 314,955.00; thence East 5,350.00 feet to a point on the East line of said Block 25, having Coordinates of X = 2,620,600.00 and Y = 314,955.00; thence South 2,190.00 feet along said East line to the Northeast corner of State Lease No. 17625, having Coordinates of X = 2,620,600.00 and Y = 312,765.00; thence West 1,700.00 feet along the boundary of said State Lease No. 17625, to its Northwest corner having Coordinates of X = 2,618,900.00 and Y = 312,765.00; thence South 5,185.00 feet along the West line of said State Lease No. 17625 to its Southwest corner, also being a point on the South line of said Block 25, having Coordinates of X = 2,618,900.00 and Y = 307,580.00; thence West 3,546.00 feet along said South line to a point having Coordinates of X = 2,615,354.00 and Y = 307,580.00; thence North 698.50 feet to a point having Coordinates of X = 2,615,354.00 and Y = 308,278.50; thence North 65 degrees 09 minutes 01 seconds West 10,473.74 feet to a point on said West line of said Block 25, having Coordinates of X = 2,605,850.00 and Y = 312,680.00; thence North 2,275.00 feet to the point of beginning containing approximately **1,492.43 acres**, all as more particularly outlined

on a plat on file in the Office of Mineral Resources, Department of Natural Resources. All bearings, distances and coordinates are based on Louisiana Coordinate System of 1927, (North or South Zone), where applicable.

NOTE: The above description of the Tract nominated for lease has been provided and corrected, where required, exclusively by the nomination party. Any mineral lease selected from this Tract and awarded by the Louisiana State Mineral Board shall be without warranty of any kind, either express, implied, or statutory, including, but not limited to, the implied warranties of merchantability and fitness for a particular purpose. Should the mineral lease awarded by the Louisiana State Mineral Board be subsequently modified, cancelled or abrogated due to the existence of conflicting leases, operating agreements, private claims or other future obligations or conditions which may affect all or any portion of the leased Tract, it shall not relieve the Lessee of the obligation to pay any bonus due thereon to the Louisiana State Mineral Board, nor shall the Louisiana State Mineral Board be obligated to refund any consideration paid by the Lessor prior to such modification, cancellation, or abrogation, including, but not limited to, bonuses, rentals and royalties.

NOTE: The State of Louisiana does hereby reserve, and this lease shall be subject to, the imprescriptible right of surface use in the nature of a servitude in favor of the Department of Natural Resources, including its Offices and Commissions, for the sole purpose of implementing, constructing, servicing and maintaining approved coastal zone management and/or restoration projects. Utilization of any and all rights derived under this lease by the mineral lessee, its agents, successors or assigns, shall not interfere with nor hinder the reasonable surface use by the Department of Natural Resources, its Offices or Commissions, as herein above reserved.

Applicant: Morris P. Hebert, Inc.

Bidder	Cash Payment	Price/ Acre	Rental	Oil	Gas	Other



BLOCK MP0026

SL 17626

SL 17625

SL 14441

Feet
0 2,000

PLAQUEMINES PARISH

MAIN PASS AREA, REVISED

SL 16432

BLOCK MP0025

BLOCK MP0032

SL 18009

SL 16892

SL 16819

P.O.B.
X=2,605,850.00
Y=314,955.00

BLOCK
MP0024

TRACT 37236 - Portion of Block 32, Main Pass Area, Revised, Plaquemines Parish, Louisiana

All of the lands now or formerly constituting the beds and bottoms of all water bodies of every nature and description the title of which vests in the State of Louisiana, together with all islands arising therein and other lands formed by accretion or by reliction, where allowed by law, excepting tax adjudicated lands, and not presently under mineral lease on March 9, 2005, situated in Plaquemines Parish, Louisiana, and more particularly described as follows: Beginning at the Northeast corner of Block 32, Main Pass Area, Revised having Coordinates of X = 2,620,600.00 and Y = 307,580.00; thence South 1,053.57 feet to a point on the East line of said Block 32, also being the Northeast corner of State Lease No. 14441, having Coordinates of X = 2,620,600.00 and Y = 306,526.43; thence along the boundary of said State Lease No. 14441 the following courses and distances: West 2,170.57 feet to a point having Coordinates of X = 2,618,429.43 and Y = 306,526.43; South 4,310.07 feet to a point having Coordinate of X = 2,618,429.43 and Y = 302,216.36; and East 2,170.57 feet to its Southeast corner, also being a point on said East line of said Block 32, having Coordinates of X = 2,620,600.00 and Y = 302,216.36; thence South 2,131.47 feet along said East line to the Northeasterly corner of State Lease No. 17293 having Coordinates of X = 2,620,600.00 and Y = 300,084.89; thence along the boundary of said State Lease No. 17293 the following courses and distances: South 63 degrees 15 minutes 13 seconds West 4,210.49 feet to a point having Coordinates of X = 2,616,840.00 and Y = 298,190.00; and South 910.00 feet to its Southwest corner, also being a point on the North line of State Lease No. 1958 having Coordinates of X = 2,616,840.00 and Y = 297,280.00; thence South 89 degrees 56 minutes 32 seconds West 1,486.00 feet along said North line of said State Lease No. 1958 to a point having Coordinates of X = 2,615,354.00 and Y = 297,278.50; thence North 10,301.50 feet to a point on the North line of said Block 32, having Coordinates of X = 2,615,354.00 and Y = 307,580.00; thence East 5,246.00 feet along said North line of said Block 32, to the point of beginning, containing approximately **865.37 acres**, all as more particularly outlined on a plat on file in the Office of Mineral Resources, Department of Natural Resources. All bearings, distances and coordinates are based on Louisiana Coordinate System of 1927, (North or South Zone), where applicable.

NOTE: The above description of the Tract nominated for lease has been provided and corrected, where required, exclusively by the nomination party. Any mineral lease selected from this Tract and awarded by the Louisiana State Mineral Board shall be without warranty of any kind, either express, implied, or statutory, including, but not limited to, the implied warranties of merchantability and fitness for a particular purpose. Should the mineral lease awarded by the Louisiana State Mineral Board be subsequently modified, cancelled or abrogated due to the existence of conflicting leases, operating agreements, private claims or other future obligations or conditions which may affect all or any portion of the leased Tract, it shall not relieve the Lessee of the obligation to

pay any bonus due thereon to the Louisiana State Mineral Board, nor shall the Louisiana State Mineral Board be obligated to refund any consideration paid by the Lessor prior to such modification, cancellation, or abrogation, including, but not limited to, bonuses, rentals and royalties.

NOTE: The State of Louisiana does hereby reserve, and this lease shall be subject to, the imprescriptible right of surface use in the nature of a servitude in favor of the Department of Natural Resources, including its Offices and Commissions, for the sole purpose of implementing, constructing, servicing and maintaining approved coastal zone management and/or restoration projects. Utilization of any and all rights derived under this lease by the mineral lessee, its agents, successors or assigns, shall not interfere with nor hinder the reasonable surface use by the Department of Natural Resources, its Offices or Commissions, as herein above reserved.

Applicant: Morris P. Hebert, Inc.

Bidder	Cash Payment	Price/ Acre	Rental	Oil	Gas	Other



SL 17626

SL 17625

P.O.B.
X=2,620,600.00
Y=307,580.00

BLOCK MP0031

SL 14441

SL 17294

SL 17293

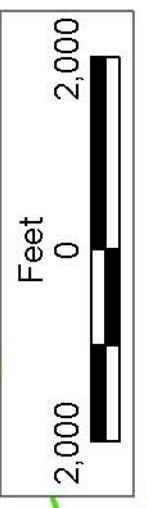
SL 1958

MAIN PASS AREA, REVISED

PLAQUEMINES PARISH

BLOCK MP0025

BLOCK MP0032



TRACT 37237 - Portion of Block 31, Main Pass Area, Revised, Plaquemines Parish, Louisiana

All of the lands now or formerly constituting the beds and bottoms of all water bodies of every nature and description the title of which vests in the State of Louisiana, together with all islands arising therein and other lands formed by accretion or by reliction, where allowed by law, excepting tax adjudicated lands, and not presently under mineral lease on March 9, 2005, situated in Plaquemines Parish, Louisiana, and more particularly described as follows: Beginning at the Northwest corner of Block 31, Main Pass Area, Revised, having Coordinates of X = 2,620,600.00 and Y = 307,580.00; thence East 7,375.00 feet along the North line of said Block 31, to a point having Coordinates of X = 2,627,975.00 and Y = 307,580.00; thence South 8,910.00 feet to a point having Coordinates of X = 2,627,975.00 and Y = 298,670.00; thence South 68 degrees 01 minutes 53 seconds West 2,111.46 feet to the most Southeast corner of State Lease No. 17294, having Coordinates of X = 2,626,016.86 and Y = 297,880.11; thence North 30 degrees 00 minutes 01 seconds West 4,413.81 feet along the Northeast line of said State Lease No. 17294 to its Northeast corner, having Coordinates of X = 2,623,809.93 and Y = 301,702.56; thence South 63 degrees 15 minutes 14 seconds West 3,594.51 feet along the Northwest line of said State Lease No. 17294 to its Northwest corner, also being a point on the West line of said Block 31, having Coordinates of X = 2,620,600.00 and Y = 300,084.89; thence North 7,495.11 feet along said West line to the point of beginning, containing approximately **1,305.60 acres**, all as more particularly outlined on a plat on file in the Office of Mineral Resources, Department of Natural Resources. All bearings, distances and coordinates are based on Louisiana Coordinate System of 1927, (North or South Zone), where applicable.

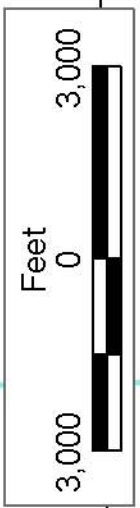
NOTE: The above description of the Tract nominated for lease has been provided and corrected, where required, exclusively by the nomination party. Any mineral lease selected from this Tract and awarded by the Louisiana State Mineral Board shall be without warranty of any kind, either express, implied, or statutory, including, but not limited to, the implied warranties of merchantability and fitness for a particular purpose. Should the mineral lease awarded by the Louisiana State Mineral Board be subsequently modified, cancelled or abrogated due to the existence of conflicting leases, operating agreements, private claims or other future obligations or conditions which may affect all or any portion of the leased Tract, it shall not relieve the Lessee of the obligation to pay any bonus due thereon to the Louisiana State Mineral Board, nor shall the Louisiana State Mineral Board be obligated to refund any consideration paid by the Lessor prior to such modification, cancellation, or abrogation, including, but not limited to, bonuses, rentals and royalties.

NOTE: The State of Louisiana does hereby reserve, and this lease shall be subject to, the imprescriptible right of surface use in the nature of a servitude in favor of the Department of Natural Resources, including its Offices and Commissions, for the sole purpose of implementing,

constructing, servicing and maintaining approved coastal zone management and/or restoration projects. Utilization of any and all rights derived under this lease by the mineral lessee, its agents, successors or assigns, shall not interfere with nor hinder the reasonable surface use by the Department of Natural Resources, its Offices or Commissions, as herein above reserved.

Applicant: Morris P. Hebert, Inc.

Bidder	Cash Payment	Price/ Acre	Rental	Oil	Gas	Other



PLAQUEMINES PARISH

MAIN PASS AREA, REVISED

BLOCK MP0026

BLOCK BS0033

BRETON SOUND AREA

BLOCK BS0048

BLOCK MP0031

BLOCK MP0032

P.O.B.
X=2,620,600.00
Y=307,580.00

SL 17625

BLOCK MP0025

SL 17626

SL 14441

SL 17294

SL 17293

SL 12002