

TRACT 37218 - Portion of Blocks 47, 72, and 73, Chandeleur Sound Area, St. Bernard Parish, Louisiana

All of the lands now or formerly constituting the beds and bottoms of all water bodies of every nature and description the title of which vests in the State of Louisiana, together with all islands arising therein and other lands formed by accretion or by reliction, where allowed by law, excepting tax adjudicated lands, and not presently under mineral lease on March 9, 2005, situated in St. Bernard Parish, Louisiana, and more particularly described as follows: Beginning at a point within Chandeleur Sound Area, Block 72 having Coordinates of X = 2,597,622.39 and Y = 386,952.56; thence South 89 degrees 44 minutes 50 seconds West 9,887.45 feet to a point on the East line of State Lease No. 18041, point also being within Block 73 having Coordinates of X = 2,587,735.03 and Y = 386,908.95; thence North 1,277.55 feet on the East line of said State Lease No. 18041 to the Southwest corner of State Lease No. 18336 having Coordinates of X = 2,587,735.03 and Y = 388,186.50; thence along the boundary of said State Lease No. 18336 the following courses: East 1,347.47 feet, North 4,175.00 feet and West 1,347.47 feet to its Northwest corner and a point on the East line of said State Lease No. 18041 having Coordinates of X = 2,587,735.03 and Y = 392,361.50; thence North 1,038.50 feet on the East line of said State Lease No. 18041 to its Northeast corner and a point on the South line of State Lease No. 18073, point also being within Block 73 having Coordinates of X = 2,587,735.03 and Y = 393,400.00; thence along the boundary of said State Lease No. 18073 the following courses: East 3,640.65 feet and North 02 degrees 02 minutes 40 seconds West 2,681.71 feet to a point having Coordinates of X = 2,591,280.02 and Y = 396,080.00; thence East 3,597.49 feet to a point within Block 72 having Coordinates of X = 2,594,877.51 and Y = 396,080.00; thence North 3,705.00 feet to the Southeast corner of State Lease No. 18186 having Coordinates of X = 2,594,877.51 and Y = 399,785.00; thence North 2,805.21 feet on the East line of said State Lease No. 18186 to its Northeast corner also being a point within Block 47 having Coordinates of X = 2,594,877.51 and Y = 402,590.21; thence North 89 degrees 55 minutes 47 seconds East 1,562.95 feet to a point having Coordinates of X = 2,596,440.46 and Y = 402,592.13; thence South 02 degrees 08 minutes 29 seconds East 5,371.97 feet to a point having Coordinates of X = 2,596,641.18 and Y = 397,223.91; thence South 02 degrees 18 minutes 39 seconds East 5,239.36 feet to a point having Coordinates of X = 2,596,852.44 and Y = 391,988.81; thence South 08 degrees 41 minutes 32 seconds East 5,094.77 feet to the point of beginning, containing approximately **1,667 acres**, all as more particularly outlined on a plat on file in the Office of Mineral Resources, Department of Natural Resources. All bearings, distances and coordinates are based on Louisiana Coordinate System of 1927, (North or South Zone), where applicable.

NOTE: The above description of the Tract nominated for lease has been provided and corrected, where required, exclusively by the nomination party. Any mineral lease selected from this Tract and awarded by the Louisiana State Mineral Board shall be without warranty of any kind,

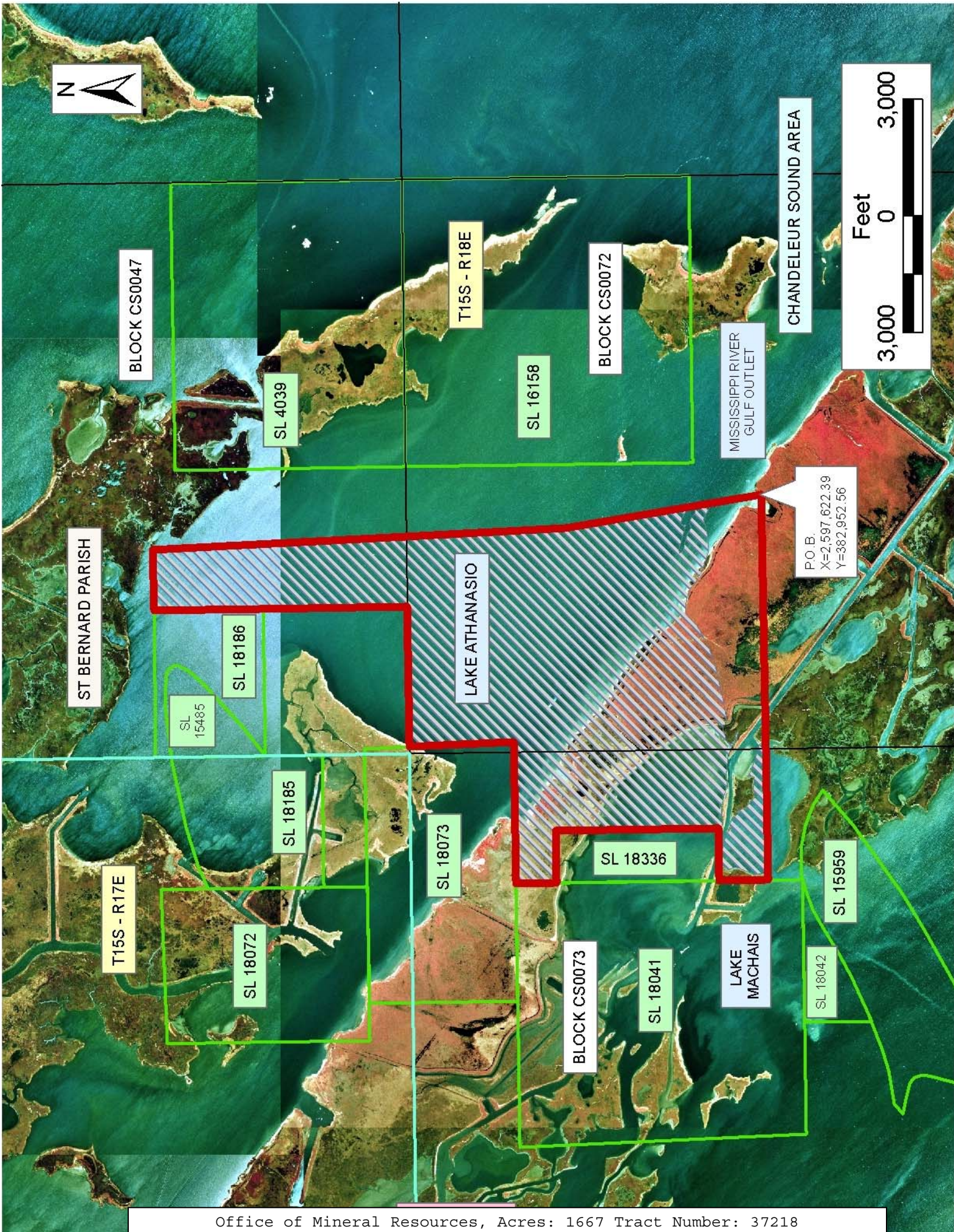
either express, implied, or statutory, including, but not limited to, the implied warranties of merchantability and fitness for a particular purpose. Should the mineral lease awarded by the Louisiana State Mineral Board be subsequently modified, cancelled or abrogated due to the existence of conflicting leases, operating agreements, private claims or other future obligations or conditions which may affect all or any portion of the leased Tract, it shall not relieve the Lessee of the obligation to pay any bonus due thereon to the Louisiana State Mineral Board, nor shall the Louisiana State Mineral Board be obligated to refund any consideration paid by the Lessor prior to such modification, cancellation, or abrogation, including, but not limited to, bonuses, rentals and royalties.

NOTE: The State of Louisiana does hereby reserve, and this lease shall be subject to, the imprescriptible right of surface use in the nature of a servitude in favor of the Department of Natural Resources, including its Offices and Commissions, for the sole purpose of implementing, constructing, servicing and maintaining approved coastal zone management and/or restoration projects. Utilization of any and all rights derived under this lease by the mineral lessee, its agents, successors or assigns, shall not interfere with nor hinder the reasonable surface use by the Department of Natural Resources, its Offices or Commissions, as herein above reserved.

NOTE: The Department of Wildlife and Fisheries has designated certain areas in the coastal waters of the State of Louisiana as Oyster Seed Bed Areas. The exact location of those Seed Bed Areas must be obtained from the Department of Wildlife and Fisheries and any work done under a mineral lease from the State of Louisiana may necessarily be conducted in conformity with the rules and regulations promulgated by the said Department of Wildlife and Fisheries for Oyster Seed Bed Areas.

Applicant: Kare-Sue Energy, Inc.

Bidder	Cash Payment	Price/Acre	Rental	Oil	Gas	Other



P.O.B.
 X=2,597,622.39
 Y=382,952.56

TRACT 37219 - Portion of Blocks 72, and 73, Chandeleur Sound Area, Blocks 1, and 2, Main Pass Area, Revised, St. Bernard Parish, Louisiana

All of the lands now or formerly constituting the beds and bottoms of all water bodies of every nature and description the title of which vests in the State of Louisiana, together with all islands arising therein and other lands formed by accretion or by reliction, where allowed by law, excepting tax adjudicated lands, and not presently under mineral lease on March 9, 2005, situated in St. Bernard Parish, Louisiana, and more particularly described as follows: Beginning at a point within Chandeleur Sound Area, Block 72 having Coordinates of X = 2,597,622.39 and Y = 386,952.56; thence South 00 degrees 12 minutes 22 seconds East 7,154.63 feet to a point within Main Pass Area, Block 2 having Coordinates of X = 2,597,648.13 and Y = 379,797.98; thence South 89 degrees 08 minutes 22 seconds West 5,728.19 feet to a point having Coordinates of X = 2,591,920.59 and Y = 379,711.95; thence North 89 degrees 50 minutes 16 seconds West 4,710.05 feet to a point within Block 1, Main Pass Area Revised, having Coordinates of X = 2,587,210.56 and Y = 379,725.28; thence North 01 degrees 54 minutes 22 seconds West 3,620.20 feet to a point on the boundary of State Lease No. 15959, as amended, point also being within Block 73, Chandeleur Sound Area, having Coordinates of X = 2,587,090.15 and Y = 393,343.48; thence along the boundary of said State Lease No. 15959 the following courses: North 58 degrees 33 minutes 03 seconds East 249.86 feet, North 55 degrees 38 minutes 16 seconds East 2,168.32 feet, North 49 degrees 36 minutes 10 seconds East 1,202.25 feet, North 55 degrees 39 minutes 15 seconds West 399.34 feet, North 64 degrees 45 minutes 33 seconds West 297.24 feet, North 69 degrees 26 minutes 32 seconds West 303.57 feet, North 75 degrees 50 minutes 54 seconds West 302.06 feet, North 80 degrees 45 minutes 03 seconds West 315.94 feet, North 87 degrees 36 minutes 34 seconds West 398.69 feet, South 85 degrees 30 minutes 31 seconds West 298.30 feet, and South 75 degrees 30 minutes 35 seconds West 93.52 feet to the Southeast corner of State Lease No. 18041 having Coordinates of X = 2,587,735.04 and Y = 386,030.00; thence North 878.95 feet on the East line of said State Lease No. 18041 to a point having Coordinates of X = 2,587,735.03 and Y = 386,908.95; thence North 89 degrees 44 minutes 50 seconds East 9,887.45 feet to the point of beginning, containing approximately **645 acres**, all as more particularly outlined on a plat on file in the Office of Mineral Resources, Department of Natural Resources. All bearings, distances and coordinates are based on Louisiana Coordinate System of 1927, (North or South Zone), where applicable.

NOTE: The above description of the Tract nominated for lease has been provided and corrected, where required, exclusively by the nomination party. Any mineral lease selected from this Tract and awarded by the Louisiana State Mineral Board shall be without warranty of any kind, either express, implied, or statutory, including, but not limited to, the implied warranties of merchantability and fitness for a particular purpose. Should the mineral lease awarded by the Louisiana State Mineral Board be subsequently modified, cancelled or abrogated due to the

existence of conflicting leases, operating agreements, private claims or other future obligations or conditions which may affect all or any portion of the leased Tract, it shall not relieve the Lessee of the obligation to pay any bonus due thereon to the Louisiana State Mineral Board, nor shall the Louisiana State Mineral Board be obligated to refund any consideration paid by the Lessor prior to such modification, cancellation, or abrogation, including, but not limited to, bonuses, rentals and royalties.

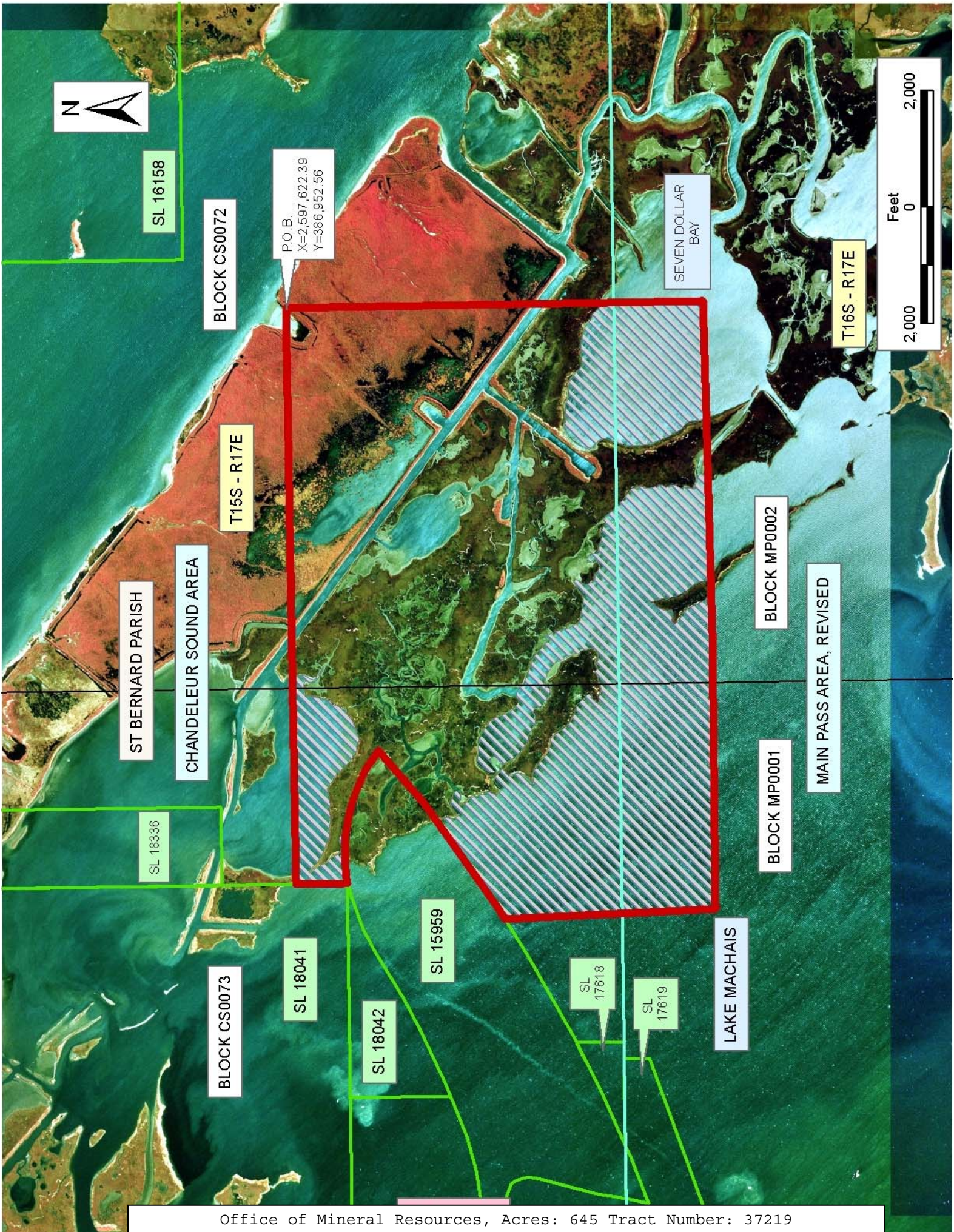
NOTE: The State of Louisiana does hereby reserve, and this lease shall be subject to, the imprescriptible right of surface use in the nature of a servitude in favor of the Department of Natural Resources, including its Offices and Commissions, for the sole purpose of implementing, constructing, servicing and maintaining approved coastal zone management and/or restoration projects. Utilization of any and all rights derived under this lease by the mineral lessee, its agents, successors or assigns, shall not interfere with nor hinder the reasonable surface use by the Department of Natural Resources, its Offices or Commissions, as herein above reserved.

NOTE: It appears, according to our records, that a portion of this Tract is located within the restrictive safety fairway area as set out by the Corps of Engineers, U.S. Army and/or the restrictive anchorage area as set out by the U.S. Coast Guard.

NOTE: The Department of Wildlife and Fisheries has designated certain areas in the coastal waters of the State of Louisiana as Oyster Seed Bed Areas. The exact location of those Seed Bed Areas must be obtained from the Department of Wildlife and Fisheries and any work done under a mineral lease from the State of Louisiana may necessarily be conducted in conformity with the rules and regulations promulgated by the said Department of Wildlife and Fisheries for Oyster Seed Bed Areas.

Applicant: Kare-Sue Energy, Inc.

Bidder	Cash Payment	Price/Acre	Rental	Oil	Gas	Other



TRACT 37220 - Jefferson and Lafourche Parishes, Louisiana

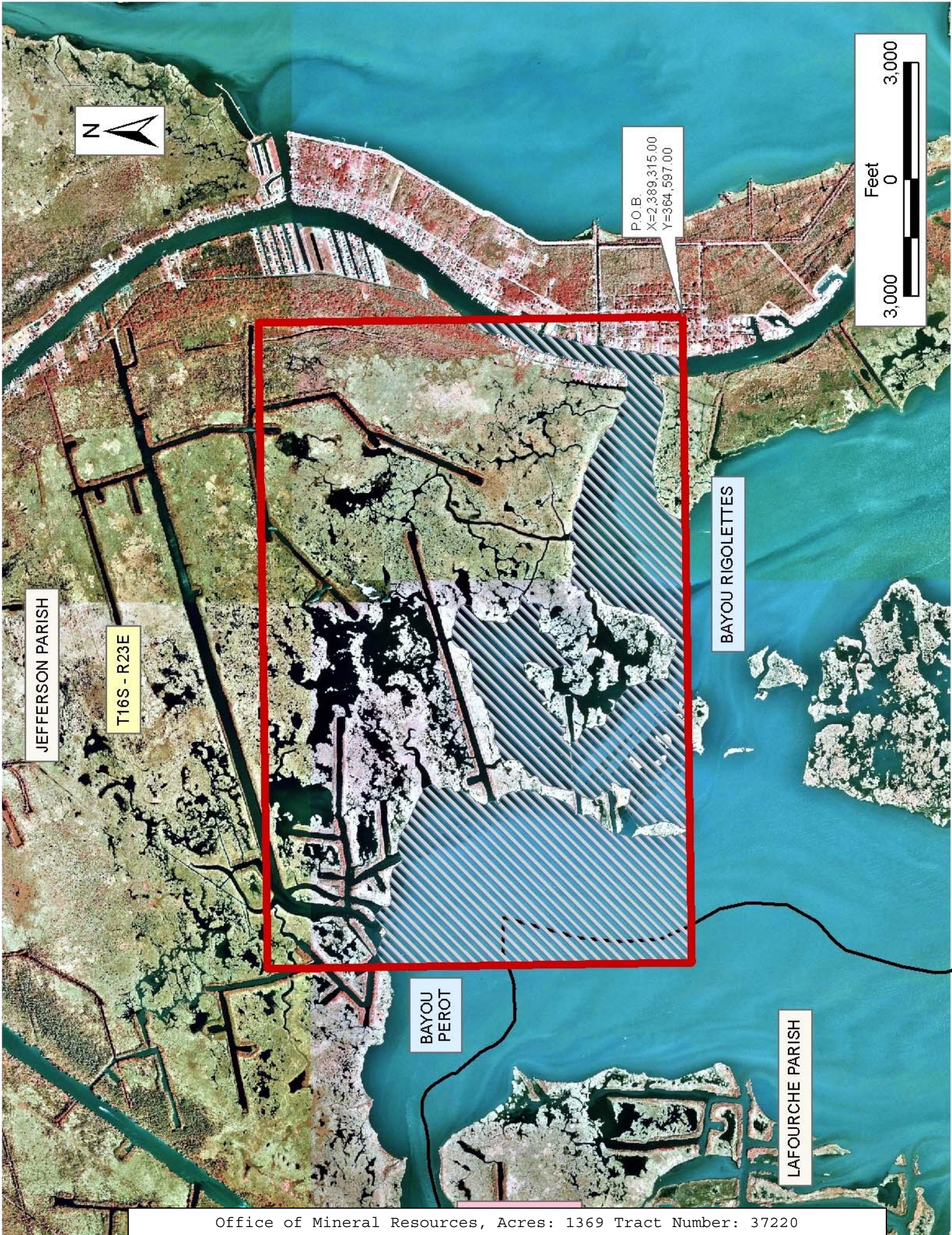
All of the lands now or formerly constituting the beds and bottoms of all water bodies of every nature and description the title of which vests in the State of Louisiana, together with all islands arising therein and other lands formed by accretion or by reliction, where allowed by law, excepting tax adjudicated lands, and not presently under mineral lease on March 9, 2005, situated in Jefferson and Lafourche Parishes, Louisiana, and more particularly described as follows: Beginning at a point having Coordinates of X = 2,389,315.00 and Y = 364,597.00; thence West 16,586.00 feet to a point having Coordinates of X = 2,372,729.00 and Y = 364,597.00; thence North 10,903.00 feet to a point having Coordinates of X = 2,372,729.00 and Y = 375,500.00; thence East 16,586.00 feet to a point having Coordinates of X = 2,389,315.00 and Y = 375,500.00; thence South 10,903.00 feet to the point of beginning, containing approximately **1,369 acres**, all as more particularly outlined on a plat on file in the Office of Mineral Resources, Department of Natural Resources. All bearings, distances and coordinates are based on Louisiana Coordinate System of 1927, (North or South Zone), where applicable.

NOTE: The above description of the Tract nominated for lease has been provided and corrected, where required, exclusively by the nomination party. Any mineral lease selected from this Tract and awarded by the Louisiana State Mineral Board shall be without warranty of any kind, either express, implied, or statutory, including, but not limited to, the implied warranties of merchantability and fitness for a particular purpose. Should the mineral lease awarded by the Louisiana State Mineral Board be subsequently modified, cancelled or abrogated due to the existence of conflicting leases, operating agreements, private claims or other future obligations or conditions which may affect all or any portion of the leased Tract, it shall not relieve the Lessee of the obligation to pay any bonus due thereon to the Louisiana State Mineral Board, nor shall the Louisiana State Mineral Board be obligated to refund any consideration paid by the Lessor prior to such modification, cancellation, or abrogation, including, but not limited to, bonuses, rentals and royalties.

NOTE: The State of Louisiana does hereby reserve, and this lease shall be subject to, the imprescriptible right of surface use in the nature of a servitude in favor of the Department of Natural Resources, including its Offices and Commissions, for the sole purpose of implementing, constructing, servicing and maintaining approved coastal zone management and/or restoration projects. Utilization of any and all rights derived under this lease by the mineral lessee, its agents, successors or assigns, shall not interfere with nor hinder the reasonable surface use by the Department of Natural Resources, its Offices or Commissions, as herein above reserved.

Applicant: Habenero Exploration Partners

Bidder	Cash Payment	Price/Acre	Rental	Oil	Gas	Other



JEFFERSON PARISH

T16S - R23E

BAYOU RIGOLETTES

BAYOU PEROT

LAFOURCHE PARISH

P.O.B.
X=2,389,315.00
Y=364,597.00



TRACT 37221 - Jefferson Parish, Louisiana

All of the lands now or formerly constituting the beds and bottoms of all water bodies of every nature and description the title of which vests in the State of Louisiana, together with all islands arising therein and other lands formed by accretion or by reliction, where allowed by law, excepting tax adjudicated lands, and not presently under mineral lease on March 9, 2005, situated in Jefferson Parish, Louisiana, and more particularly described as follows: Beginning at a point having Coordinates of X = 2,389,315.00 and Y = 364,597.00; thence North 10,903.00 feet to a point having Coordinates of X = 2,389,315.00 and Y = 375,500.00; thence East approximately 4,946 feet to a point on the boundary of State Lease No. 15009, as amended; thence along the boundary of said State Lease No. 15009, as amended, the following courses: Southerly, Southwesterly, Northwesterly, Southeasterly, Easterly, and Northwesterly to the intersection of an East West line having a Coordinate of Y = 375,500.00; thence East approximately 10,710 feet to a point having Coordinates of X = 2,405,900.00 and Y = 375,500.00; thence South 10,903.00 feet to a point having Coordinates of X = 2,405,900.00 and Y = 364,597.00; thence West 16,585.00 feet to the point of beginning, **LESS AND EXCEPT** those portions, if any, of State Lease No. 15009, as amended, and State Lease No. 15057, as amended, that may lie within the above described tract, containing approximately **105 acres**, all as more particularly outlined on a plat on file in the Office of Mineral Resources, Department of Natural Resources. All bearings, distances and coordinates are based on Louisiana Coordinate System of 1927, (North or South Zone), where applicable.

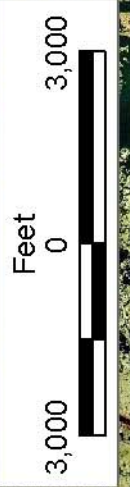
NOTE: The above description of the Tract nominated for lease has been provided and corrected, where required, exclusively by the nomination party. Any mineral lease selected from this Tract and awarded by the Louisiana State Mineral Board shall be without warranty of any kind, either express, implied, or statutory, including, but not limited to, the implied warranties of merchantability and fitness for a particular purpose. Should the mineral lease awarded by the Louisiana State Mineral Board be subsequently modified, cancelled or abrogated due to the existence of conflicting leases, operating agreements, private claims or other future obligations or conditions which may affect all or any portion of the leased Tract, it shall not relieve the Lessee of the obligation to pay any bonus due thereon to the Louisiana State Mineral Board, nor shall the Louisiana State Mineral Board be obligated to refund any consideration paid by the Lessor prior to such modification, cancellation, or abrogation, including, but not limited to, bonuses, rentals and royalties.

NOTE: The State of Louisiana does hereby reserve, and this lease shall be subject to, the imprescriptible right of surface use in the nature of a servitude in favor of the Department of Natural Resources, including its Offices and Commissions, for the sole purpose of implementing, constructing, servicing and maintaining approved coastal zone management and/or restoration projects. Utilization of any and all rights derived under this lease by the mineral lessee, its agents, successors or assigns,

shall not interfere with nor hinder the reasonable surface use by the Department of Natural Resources, its Offices or Commissions, as herein above reserved.

Applicant: Habenero Exploration Partners

Bidder	Cash Payment	Price/Acre	Rental	Oil	Gas	Other



JEFFERSON PARISH

BARATARIA BAY WATERWAY

T16S - R24E

T16S - R23E

SL 15057

SL 15009

P.O.B.
X=2,389,315.00
Y=364,597.00

TRACT 37222 - Jefferson and Lafourche Parishes, Louisiana

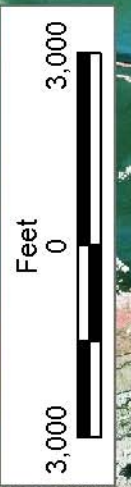
All of the lands now or formerly constituting the beds and bottoms of all water bodies of every nature and description the title of which vests in the State of Louisiana, together with all islands arising therein and other lands formed by accretion or by reliction, where allowed by law, excepting tax adjudicated lands, and not presently under mineral lease on March 9, 2005, situated in Jefferson and Lafourche Parishes, Louisiana, and more particularly described as follows: Beginning at a point having Coordinates of X = 2,389,315.00 and Y = 364,597.00; thence South 10,902.00 feet to a point having Coordinates of X = 2,389,315.00 and Y = 353,695.00; thence West 16,586.00 feet to a point on the East line of State Lease No. 18076 having Coordinates of X = 2,372,729.00 and Y = 353,695.00; thence North 421.00 feet along the East line of said State Lease No. 18076 to its Northeast corner having Coordinates of X = 2,372,729.00 and Y = 354,116.00; thence North 10,481.00 feet to a point having Coordinates of X = 2,372,729.00 and Y = 364,597.00; thence East 16,586.00 feet to the point of beginning, containing approximately **2,415 acres**, all as more particularly outlined on a plat on file in the Office of Mineral Resources, Department of Natural Resources. All bearings, distances and coordinates are based on Louisiana Coordinate System of 1927, (North or South Zone), where applicable.

NOTE: The above description of the Tract nominated for lease has been provided and corrected, where required, exclusively by the nomination party. Any mineral lease selected from this Tract and awarded by the Louisiana State Mineral Board shall be without warranty of any kind, either express, implied, or statutory, including, but not limited to, the implied warranties of merchantability and fitness for a particular purpose. Should the mineral lease awarded by the Louisiana State Mineral Board be subsequently modified, cancelled or abrogated due to the existence of conflicting leases, operating agreements, private claims or other future obligations or conditions which may affect all or any portion of the leased Tract, it shall not relieve the Lessee of the obligation to pay any bonus due thereon to the Louisiana State Mineral Board, nor shall the Louisiana State Mineral Board be obligated to refund any consideration paid by the Lessor prior to such modification, cancellation, or abrogation, including, but not limited to, bonuses, rentals and royalties.

NOTE: The State of Louisiana does hereby reserve, and this lease shall be subject to, the imprescriptible right of surface use in the nature of a servitude in favor of the Department of Natural Resources, including its Offices and Commissions, for the sole purpose of implementing, constructing, servicing and maintaining approved coastal zone management and/or restoration projects. Utilization of any and all rights derived under this lease by the mineral lessee, its agents, successors or assigns, shall not interfere with nor hinder the reasonable surface use by the Department of Natural Resources, its Offices or Commissions, as herein above reserved.

Applicant: Habenero Exploration Partners

Bidder	Cash Payment	Price/Acre	Rental	Oil	Gas	Other



P.O.B.
X=2,389,315.00
Y=364,597.00

T17S - R23E

JEFFERSON PARISH

BAYOU
RIGOLETTES

LAFOURCHE PARISH

BAYOU
PEROT

T16S - R23E

SL 18076



TRACT 37223 - Jefferson Parish, Louisiana

All of the lands now or formerly constituting the beds and bottoms of all water bodies of every nature and description the title of which vests in the State of Louisiana, together with all islands arising therein and other lands formed by accretion or by reliction, where allowed by law, excepting tax adjudicated lands, and not presently under mineral lease on March 9, 2005, situated in Jefferson Parish, Louisiana, and more particularly described as follows: Beginning at a point having Coordinates of X = 2,389,315.00 and Y = 364,597.00; thence East 16,585.00 feet to a point having Coordinates of X = 2,405,900.00 and Y = 364,597.00; thence South 10,902.00 feet to a point having Coordinates of X = 2,405,900.00 and Y = 353,695.00; thence West 16,585.00 feet to a point having Coordinates of X = 2,389,315.00 and Y = 353,695.00; thence North 10,902.00 feet to the point of beginning, containing approximately **306 acres**, all as more particularly outlined on a plat on file in the Office of Mineral Resources, Department of Natural Resources. All bearings, distances and coordinates are based on Louisiana Coordinate System of 1927, (North or South Zone), where applicable.

NOTE: The above description of the Tract nominated for lease has been provided and corrected, where required, exclusively by the nomination party. Any mineral lease selected from this Tract and awarded by the Louisiana State Mineral Board shall be without warranty of any kind, either express, implied, or statutory, including, but not limited to, the implied warranties of merchantability and fitness for a particular purpose. Should the mineral lease awarded by the Louisiana State Mineral Board be subsequently modified, cancelled or abrogated due to the existence of conflicting leases, operating agreements, private claims or other future obligations or conditions which may affect all or any portion of the leased Tract, it shall not relieve the Lessee of the obligation to pay any bonus due thereon to the Louisiana State Mineral Board, nor shall the Louisiana State Mineral Board be obligated to refund any consideration paid by the Lessor prior to such modification, cancellation, or abrogation, including, but not limited to, bonuses, rentals and royalties.

NOTE: The State of Louisiana does hereby reserve, and this lease shall be subject to, the imprescriptible right of surface use in the nature of a servitude in favor of the Department of Natural Resources, including its Offices and Commissions, for the sole purpose of implementing, constructing, servicing and maintaining approved coastal zone management and/or restoration projects. Utilization of any and all rights derived under this lease by the mineral lessee, its agents, successors or assigns, shall not interfere with nor hinder the reasonable surface use by the Department of Natural Resources, its Offices or Commissions, as herein above reserved.

Applicant: Habenero Exploration Partners

Bidder	Cash Payment	Price/Acre	Rental	Oil	Gas	Other



T16S - R24E

T17S - R24E

BAYOU
DUPONT

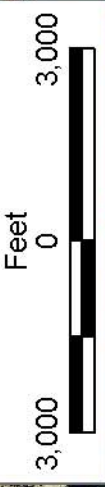
JEFFERSON PARISH

P.O.B.
X=2,389,315.00
Y=364,597.00

T16S - R23E

BARATARIA BAY
WATERWAY

T17S - R23E



TRACT 37224 - Plaquemines Parish, Louisiana

All of the lands now or formerly constituting the beds and bottoms of all water bodies of every nature and description the title of which vests in the State of Louisiana, together with all islands arising therein and other lands formed by accretion or by reliction, where allowed by law, excepting tax adjudicated lands, and not presently under mineral lease on March 9, 2005, situated in Plaquemines Parish, Louisiana, and more particularly described as follows: Beginning at the Northwest corner of State Lease No. 18077 having Coordinates X = 2,507,020.00 and Y = 355,176.00; thence South 4 degrees 59 minutes 18 seconds West 1,488.94 feet along the West boundary of said State Lease No. 18077 to a point having Coordinates of X = 2,506,890.53 and Y = 353,692.69; thence West approximately 4,827 feet to a point on the East boundary of State Lease No. 1212, as amended, having a Coordinate of Y = 353,692.69; thence along the boundaries of said State Lease No. 1212 the following: Northerly approximately 899 feet and Westerly approximately 2,588 feet to a point having a Coordinate of X = 2,499,440.00; thence North approximately 7,196 feet to a point on the South boundary of State Lease No. 335 having a Coordinate of X = 2,499,440.00; thence Easterly approximately 7,581 feet along the South boundary of said State Lease No. 335 to a point having a Coordinate of X = 2,507,020.00; thence South approximately 6,631 feet to point of beginning, **LESS AND EXCEPT** that portion, if any, of the above described tract which may lie within State Lease No, 335 and State Lease No. 1212, containing approximately **866 acres**, all as more particularly outlined on a plat on file in the Office of Mineral Resources, Department of Natural Resources. All bearings, distances and coordinates are based on Louisiana Coordinate System of 1927, (North or South Zone), where applicable.

NOTE: The above description of the Tract nominated for lease has been provided and corrected, where required, exclusively by the nomination party. Any mineral lease selected from this Tract and awarded by the Louisiana State Mineral Board shall be without warranty of any kind, either express, implied, or statutory, including, but not limited to, the implied warranties of merchantability and fitness for a particular purpose. Should the mineral lease awarded by the Louisiana State Mineral Board be subsequently modified, cancelled or abrogated due to the existence of conflicting leases, operating agreements, private claims or other future obligations or conditions which may affect all or any portion of the leased Tract, it shall not relieve the Lessee of the obligation to pay any bonus due thereon to the Louisiana State Mineral Board, nor shall the Louisiana State Mineral Board be obligated to refund any consideration paid by the Lessor prior to such modification, cancellation, or abrogation, including, but not limited to, bonuses, rentals and royalties.

NOTE: The State of Louisiana does hereby reserve, and this lease shall be subject to, the imprescriptible right of surface use in the nature of a servitude in favor of the Department of Natural Resources, including its Offices and Commissions, for the sole purpose of implementing,

constructing, servicing and maintaining approved coastal zone management and/or restoration projects. Utilization of any and all rights derived under this lease by the mineral lessee, its agents, successors or assigns, shall not interfere with nor hinder the reasonable surface use by the Department of Natural Resources, its Offices or Commissions, as herein above reserved.

NOTE: The Department of Wildlife and Fisheries has designated certain areas in the coastal waters of the State of Louisiana as Oyster Seed Bed Areas. The exact location of those Seed Bed Areas must be obtained from the Department of Wildlife and Fisheries and any work done under a mineral lease from the State of Louisiana may necessarily be conducted in conformity with the rules and regulations promulgated by the said Department of Wildlife and Fisheries for Oyster Seed Bed Areas.

Applicant: Suncoast Land Services, Inc.

Bidder	Cash Payment	Price/Acre	Rental	Oil	Gas	Other



TRACT 37225 - Plaquemines Parish, Louisiana

All of the lands now or formerly constituting the beds and bottoms of all water bodies of every nature and description the title of which vests in the State of Louisiana, together with all islands arising therein and other lands formed by accretion or by reliction, where allowed by law, excepting tax adjudicated lands, and not presently under mineral lease on March 9, 2005, situated in Plaquemines Parish, Louisiana, and more particularly described as follows: Beginning at a point having Coordinates X = 2,507,020.00 and Y = 355,176.00 also being the Northwest corner of State Lease No. 18077; thence North approximately 6,631 feet to a point on the southern boundary of State Lease No. 335 having a Coordinate of X = 2,507,020.00; thence Easterly approximately 4,920 feet along the southern boundary of State Lease No. 335 to a point having a Coordinate of X = 2,511,940.00; thence South approximately 7,360 feet to the Northeast corner of State Lease No. 18077 having Coordinates of X = 2,511,940.00 and Y = 354,540.00; thence North 82 degrees 38 minutes 04 seconds West 4,960.00 feet along the North line of State Lease No. 18077 to the point of beginning, **LESS AND EXCEPT** that portion, if any, of the above described tract which may lie within State Lease No. 335, containing approximately **458 acres**, all as more particularly outlined on a plat on file in the Office of Mineral Resources, Department of Natural Resources. All bearings, distances and coordinates are based on Louisiana Coordinate System of 1927, (North or South Zone), where applicable.

NOTE: The above description of the Tract nominated for lease has been provided and corrected, where required, exclusively by the nomination party. Any mineral lease selected from this Tract and awarded by the Louisiana State Mineral Board shall be without warranty of any kind, either express, implied, or statutory, including, but not limited to, the implied warranties of merchantability and fitness for a particular purpose. Should the mineral lease awarded by the Louisiana State Mineral Board be subsequently modified, cancelled or abrogated due to the existence of conflicting leases, operating agreements, private claims or other future obligations or conditions which may affect all or any portion of the leased Tract, it shall not relieve the Lessee of the obligation to pay any bonus due thereon to the Louisiana State Mineral Board, nor shall the Louisiana State Mineral Board be obligated to refund any consideration paid by the Lessor prior to such modification, cancellation, or abrogation, including, but not limited to, bonuses, rentals and royalties.

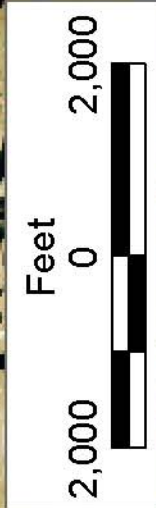
NOTE: The State of Louisiana does hereby reserve, and this lease shall be subject to, the imprescriptible right of surface use in the nature of a servitude in favor of the Department of Natural Resources, including its Offices and Commissions, for the sole purpose of implementing, constructing, servicing and maintaining approved coastal zone management and/or restoration projects. Utilization of any and all rights derived under this lease by the mineral lessee, its agents, successors or assigns, shall not interfere with nor hinder the reasonable surface use by the

Department of Natural Resources, its Offices or Commissions, as herein above reserved.

NOTE: The Department of Wildlife and Fisheries has designated certain areas in the coastal waters of the State of Louisiana as Oyster Seed Bed Areas. The exact location of those Seed Bed Areas must be obtained from the Department of Wildlife and Fisheries and any work done under a mineral lease from the State of Louisiana may necessarily be conducted in conformity with the rules and regulations promulgated by the said Department of Wildlife and Fisheries for Oyster Seed Bed Areas.

Applicant: Suncoast Land Services, Inc.

Bidder	Cash Payment	Price/Acre	Rental	Oil	Gas	Other



PLAQUEMINES PARISH

SL 335

T16S-R14E

T16S-R15E



SL 18077

P.O.B.
X=2,507,020.00
Y=355,176.00

SL 1212

TRACT 37226 - Plaquemines Parish, Louisiana

All of the lands now or formerly constituting the beds and bottoms of all water bodies of every nature and description the title of which vests in the State of Louisiana, together with all islands arising therein and other lands formed by accretion or by reliction, where allowed by law, excepting tax adjudicated lands, and not presently under mineral lease on March 9, 2005, situated in Plaquemines Parish, Louisiana, and more particularly described as follows: Beginning at a point having Coordinates X = 2,511,940.00 and Y = 348,610.50; thence North 3,509.50 feet to a point being the Southeast corner of State Lease No. 18077 having Coordinates of X = 2,511,940.00 and Y = 352,120.00; thence North along the East boundary of said State Lease No. 18077 to its Northeast corner 2,420.00 feet to a point having Coordinates of X = 2,511,940.00 and Y = 354,540.00; thence North approximately 7,360 feet to a point on the south boundary of State Lease No. 335, as amended, having a Coordinate of X = 2,511,940.00; thence Easterly along the south boundary said State Lease No. 335 approximately 4,076 feet to a point having a Coordinate of X = 2,516,015.00; thence South approximately 13,367 feet to a point having Coordinates of X = 2,516,015.00 and Y = 348,610.50; thence West 4,075.00 feet to the point of beginning, **LESS AND EXCEPT** that portion, if any, of the above described tract which may lie within State Lease No. 335, containing approximately **596 acres**, all as more particularly outlined on a plat on file in the Office of Mineral Resources, Department of Natural Resources. All bearings, distances and coordinates are based on Louisiana Coordinate System of 1927, (North or South Zone), where applicable.

NOTE: The above description of the Tract nominated for lease has been provided and corrected, where required, exclusively by the nomination party. Any mineral lease selected from this Tract and awarded by the Louisiana State Mineral Board shall be without warranty of any kind, either express, implied, or statutory, including, but not limited to, the implied warranties of merchantability and fitness for a particular purpose. Should the mineral lease awarded by the Louisiana State Mineral Board be subsequently modified, cancelled or abrogated due to the existence of conflicting leases, operating agreements, private claims or other future obligations or conditions which may affect all or any portion of the leased Tract, it shall not relieve the Lessee of the obligation to pay any bonus due thereon to the Louisiana State Mineral Board, nor shall the Louisiana State Mineral Board be obligated to refund any consideration paid by the Lessor prior to such modification, cancellation, or abrogation, including, but not limited to, bonuses, rentals and royalties.

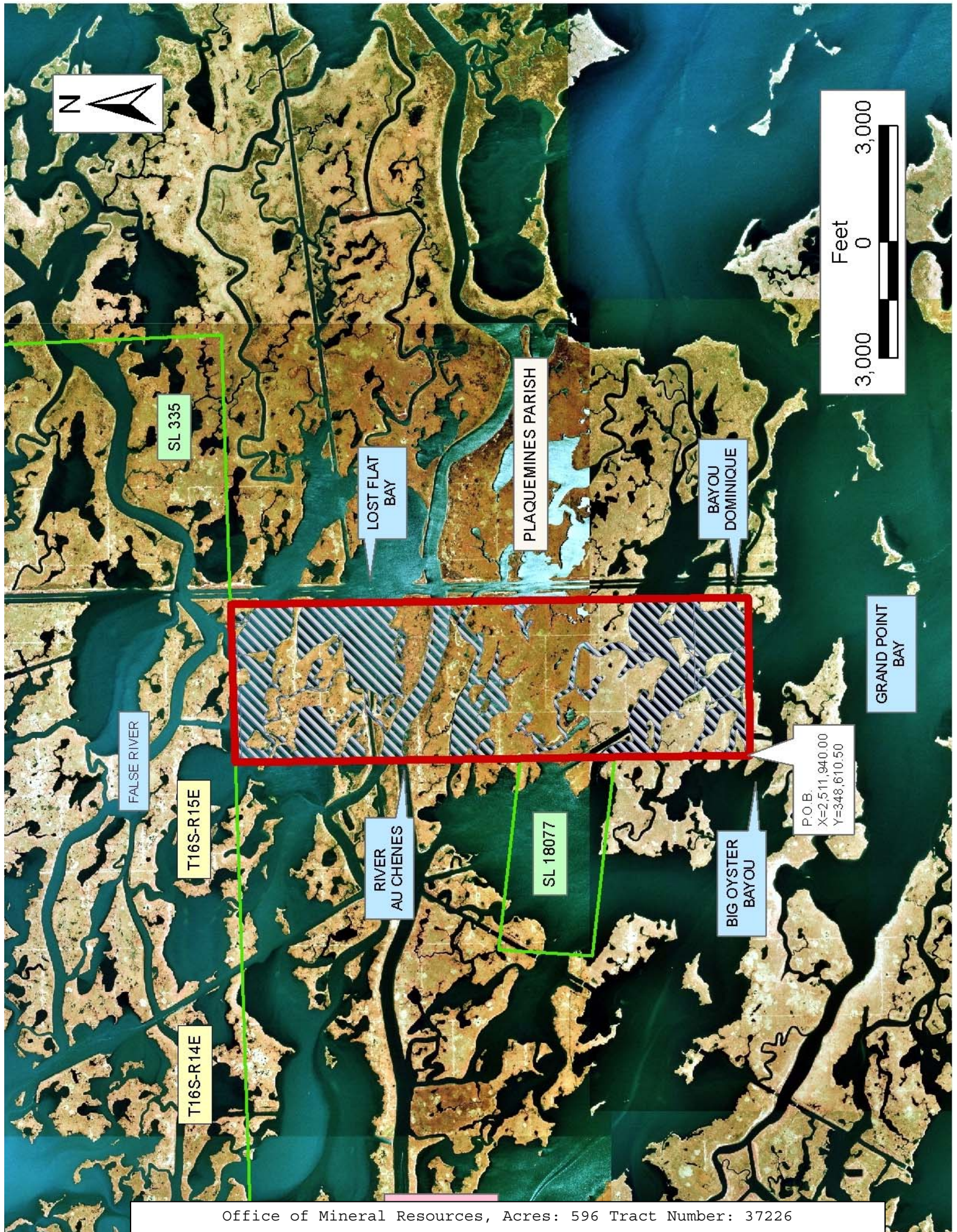
NOTE: The State of Louisiana does hereby reserve, and this lease shall be subject to, the imprescriptible right of surface use in the nature of a servitude in favor of the Department of Natural Resources, including its Offices and Commissions, for the sole purpose of implementing, constructing, servicing and maintaining approved coastal zone management and/or restoration projects. Utilization of any and all rights derived under this lease by the mineral lessee, its agents, successors or assigns,

shall not interfere with nor hinder the reasonable surface use by the Department of Natural Resources, its Offices or Commissions, as herein above reserved.

NOTE: The Department of Wildlife and Fisheries has designated certain areas in the coastal waters of the State of Louisiana as Oyster Seed Bed Areas. The exact location of those Seed Bed Areas must be obtained from the Department of Wildlife and Fisheries and any work done under a mineral lease from the State of Louisiana may necessarily be conducted in conformity with the rules and regulations promulgated by the said Department of Wildlife and Fisheries for Oyster Seed Bed Areas.

Applicant: Suncoast Land Services, Inc.

Bidder	Cash Payment	Price/Acre	Rental	Oil	Gas	Other



TRACT 37227 - Plaquemines Parish, Louisiana

All of the lands now or formerly constituting the beds and bottoms of all water bodies of every nature and description the title of which vests in the State of Louisiana, together with all islands arising therein and other lands formed by accretion or by reliction, where allowed by law, excepting tax adjudicated lands, and not presently under mineral lease on March 9, 2005, situated in Plaquemines Parish, Louisiana, and more particularly described as follows: Beginning at a point having Coordinates X = 2,511,940.00 and Y = 348,610.50; thence West approximately 9,656 feet to a point on the East Line of State Lease No. 1212, as amended, having a Coordinate of Y = 348,610.50; thence Northerly along the East boundary of said State Lease No. 1212 approximately 5,087 feet to a point on the East boundary of said State Lease No. 1212 having a Coordinate of Y = 353,692.69; thence East approximately 4,827 feet to a point on State Lease No. 18077 having Coordinates of X = 2,506,890.53 and Y = 353,692.69; thence South 4 degrees 59 minutes 18 seconds West 926.21 feet to the Southwest corner of State Lease No. 18077 having Coordinates of X = 2,506,810.00 and Y = 352,770.00; thence South 82 degrees 46 minutes 44 seconds East 5,171.02 feet along the South line of said State Lease No. 18077 to its Southeast corner having Coordinates of X = 2,511,940.00 and Y = 352,120.00; thence South 3,509.50 feet to the point of beginning, **LESS AND EXCEPT** that portion, if any, of the above described tract which may lie within State Lease No. 1212 containing approximately **735 acres**, all as more particularly outlined on a plat on file in the Office of Mineral Resources, Department of Natural Resources. All bearings, distances and coordinates are based on Louisiana Coordinate System of 1927, (North or South Zone), where applicable.

NOTE: The above description of the Tract nominated for lease has been provided and corrected, where required, exclusively by the nomination party. Any mineral lease selected from this Tract and awarded by the Louisiana State Mineral Board shall be without warranty of any kind, either express, implied, or statutory, including, but not limited to, the implied warranties of merchantability and fitness for a particular purpose. Should the mineral lease awarded by the Louisiana State Mineral Board be subsequently modified, cancelled or abrogated due to the existence of conflicting leases, operating agreements, private claims or other future obligations or conditions which may affect all or any portion of the leased Tract, it shall not relieve the Lessee of the obligation to pay any bonus due thereon to the Louisiana State Mineral Board, nor shall the Louisiana State Mineral Board be obligated to refund any consideration paid by the Lessor prior to such modification, cancellation, or abrogation, including, but not limited to, bonuses, rentals and royalties.

NOTE: The State of Louisiana does hereby reserve, and this lease shall be subject to, the imprescriptible right of surface use in the nature of a servitude in favor of the Department of Natural Resources, including its Offices and Commissions, for the sole purpose of implementing, constructing, servicing and maintaining approved coastal zone management

and/or restoration projects. Utilization of any and all rights derived under this lease by the mineral lessee, its agents, successors or assigns, shall not interfere with nor hinder the reasonable surface use by the Department of Natural Resources, its Offices or Commissions, as herein above reserved.

NOTE: The Department of Wildlife and Fisheries has designated certain areas in the coastal waters of the State of Louisiana as Oyster Seed Bed Areas. The exact location of those Seed Bed Areas must be obtained from the Department of Wildlife and Fisheries and any work done under a mineral lease from the State of Louisiana may necessarily be conducted in conformity with the rules and regulations promulgated by the said Department of Wildlife and Fisheries for Oyster Seed Bed Areas.

Applicant: Suncoast Land Services, Inc.

Bidder	Cash Payment	Price/Acre	Rental	Oil	Gas	Other

