

TRACT 37208 - Bienville Parish, Louisiana

All of the lands now or formerly constituting the beds and bottoms of all water bodies of every nature and description the title of which vests in the State of Louisiana, together with all islands arising therein and other lands formed by accretion or by reliction, where allowed by law, excepting tax adjudicated lands, and not presently under mineral lease on March 9, 2005, situated in Bienville Parish, Louisiana, and more particularly described as follows: Beginning at a point having Coordinates of X = 1,730,700.00 and Y = 619,200.00; thence West 5,600.00 feet to a point having Coordinates of X = 1,725,100.00 and Y = 619,200.00; thence North 5,200.00 feet to a point on the South line of State Lease No. 18095 having Coordinates of X = 1,725,100.00 and Y = 624,400.00; thence East 5,600.00 feet along the South line of said State Lease No. 18095 to its Southeast corner having Coordinates of X = 1,730,700.00 and Y = 624,400.00; thence South 5,200.00 feet to the point of beginning, including all lands lying below the elevation of 148.6 feet as established in a boundary agreement dated April 16, 1955, **LESS AND EXCEPT** that portion of the nomination from the surface to 5530 feet located within the geographical boundary of the Underground Storage Lease No. 470, being the Bistineau Gas Storage Pool in the Sligo Formation also known as the Pettit Formation, containing approximately **9 acres**, all as more particularly outlined on a plat on file in the Office of Mineral Resources, Department of Natural Resources. All bearings, distances and coordinates are based on Louisiana Coordinate System of 1927, (North or South Zone), where applicable.

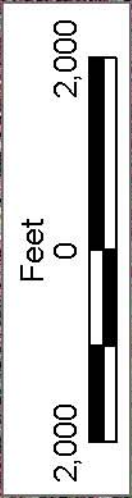
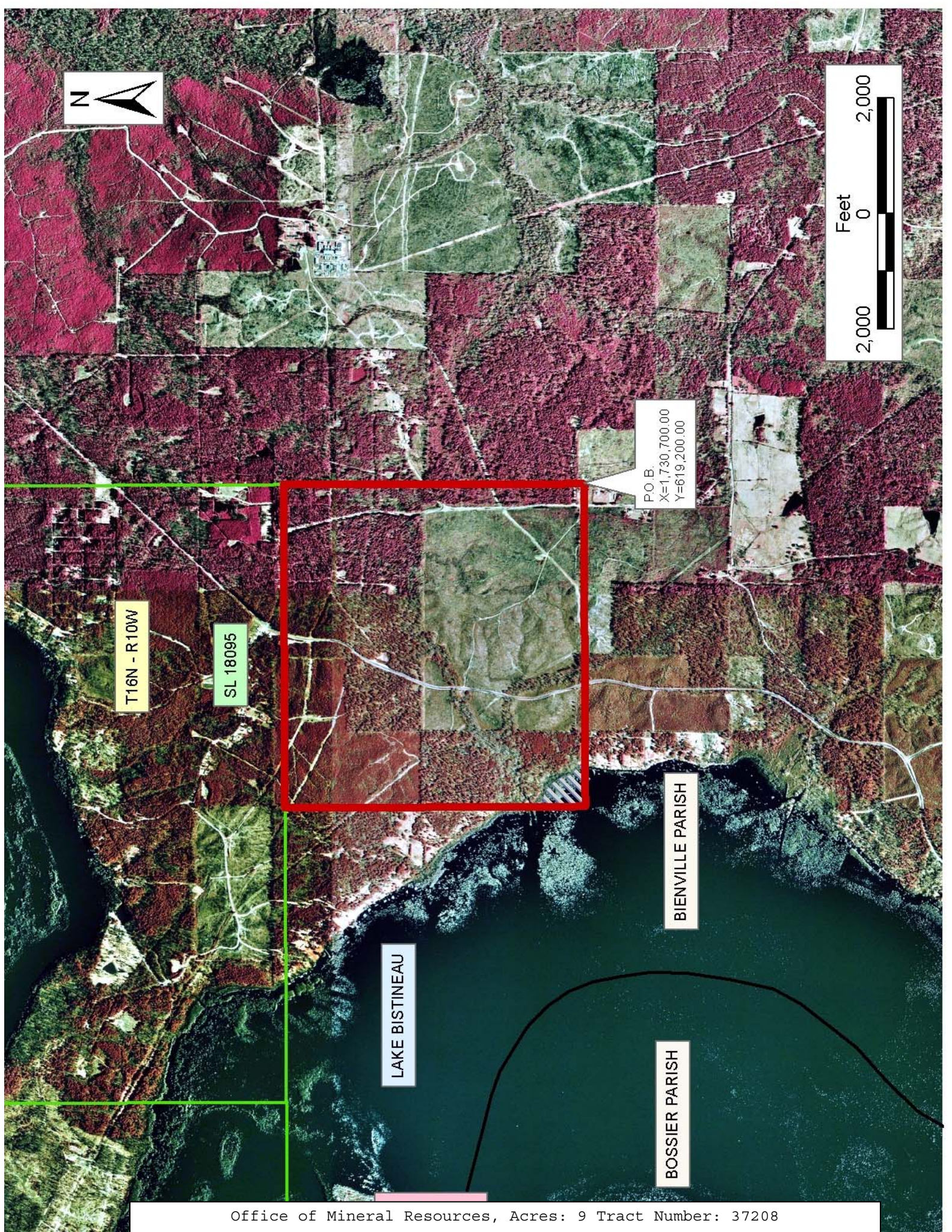
NOTE: The above description of the Tract nominated for lease has been provided and corrected, where required, exclusively by the nomination party. Any mineral lease selected from this Tract and awarded by the Louisiana State Mineral Board shall be without warranty of any kind, either express, implied, or statutory, including, but not limited to, the implied warranties of merchantability and fitness for a particular purpose. Should the mineral lease awarded by the Louisiana State Mineral Board be subsequently modified, cancelled or abrogated due to the existence of conflicting leases, operating agreements, private claims or other future obligations or conditions which may affect all or any portion of the leased Tract, it shall not relieve the Lessee of the obligation to pay any bonus due thereon to the Louisiana State Mineral Board, nor shall the Louisiana State Mineral Board be obligated to refund any consideration paid by the Lessor prior to such modification, cancellation, or abrogation, including, but not limited to, bonuses, rentals and royalties.

NOTE: This tract encompasses an area beneath which is located on the Bistineau Gas Storage Pool in the Sligo formation of the Pettit Porosity. Accordingly, any mineral related activity, including, but not limited to, the exploration and drilling for, and the production and storage of oil, gas and other liquid or gaseous minerals, conducted under a valid mineral lease which may be obtained from the State, shall be subject to any statewide orders issued by the Louisiana Office of Conservation pertinent

to conducting such operations in this area and upon this tract, including particularly, but not limited to, the following: Order Nos. 287, 287-A, 287-A-1, 287-B, Supplement to 287-B, 287-B-1, 287-B-2 and 287-B-3. The successful bidder on this tract shall contact the operator of the Bistineau Gas Storage Pool and the Office of Conservation prior to initiating and conducting any of the aforementioned activity hereon.

Applicant: Hamal Exploration

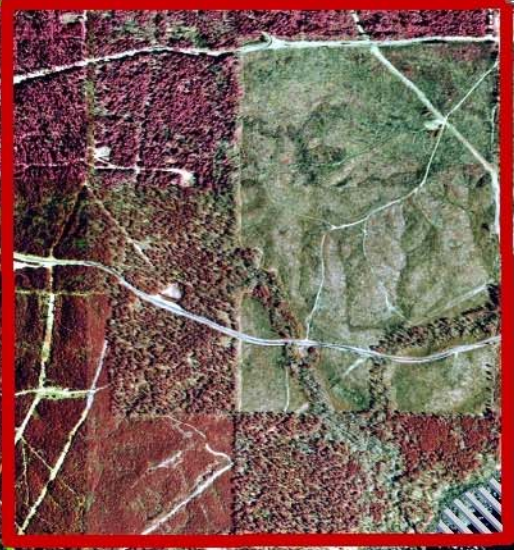
Bidder	Cash Payment	Price/Acre	Rental	Oil	Gas	Other



P.O.B.
X=1,730,700.00
Y=619,200.00

T16N - R10W

SL 18095



LAKE BISTINEAU

BIENVILLE PARISH

BOSSIER PARISH

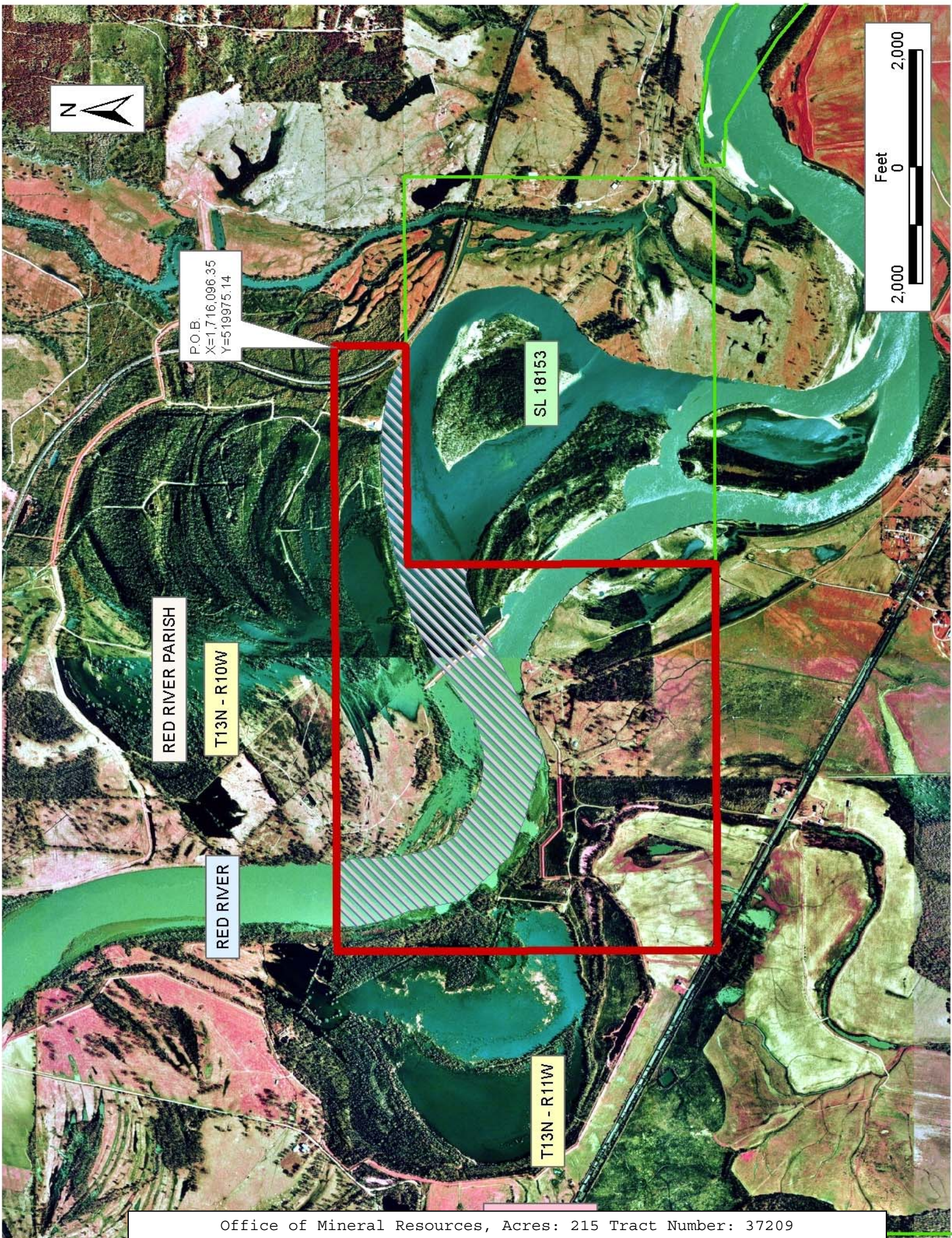
TRACT 37209 - Red River Parish, Louisiana

All of the lands now or formerly constituting the beds and bottoms of all water bodies of every nature and description the title of which vests in the State of Louisiana, together with all islands arising therein and other lands formed by accretion or by reliction, where allowed by law, excepting tax adjudicated lands, and not presently under mineral lease on March 9, 2005, situated in Red River Parish, Louisiana, and more particularly described as follows: Beginning at a point having Coordinates of X = 1,716,096.35 and Y = 519,975.14; thence South 1,220.00 feet to a point on the North boundary of State Lease No. 18153 and having Coordinates of X = 1,716,096.35 and Y = 518,755.14; thence South 89 degrees 41 minutes 1 seconds West 3,749.72 feet along the North boundary of said State Lease No. 18153, to its Northwest corner having Coordinates of X = 1,712,346.69 and Y = 518,734.43; thence South 5,280.00 feet along the West boundary of said State Lease No. 18153 to its Southwest corner having Coordinates of X = 1,712,346.69 and Y = 513,454.43; thence West 6,622.00 feet to a point having Coordinates of X = 1,705,724.69 and Y = 513,454.43; thence North 6,520.71 feet to a point having Coordinates of X = 1,705,724.69 and Y = 519,975.14; thence East 10,371.66 feet to the point of beginning, containing approximately **215 acres**, all as more particularly outlined on a plat on file in the Office of Mineral Resources, Department of Natural Resources. All bearings, distances and coordinates are based on Louisiana Coordinate System of 1927, (North or South Zone), where applicable.

NOTE: The above description of the Tract nominated for lease has been provided and corrected, where required, exclusively by the nomination party. Any mineral lease selected from this Tract and awarded by the Louisiana State Mineral Board shall be without warranty of any kind, either express, implied, or statutory, including, but not limited to, the implied warranties of merchantability and fitness for a particular purpose. Should the mineral lease awarded by the Louisiana State Mineral Board be subsequently modified, cancelled or abrogated due to the existence of conflicting leases, operating agreements, private claims or other future obligations or conditions which may affect all or any portion of the leased Tract, it shall not relieve the Lessee of the obligation to pay any bonus due thereon to the Louisiana State Mineral Board, nor shall the Louisiana State Mineral Board be obligated to refund any consideration paid by the Lessor prior to such modification, cancellation, or abrogation, including, but not limited to, bonuses, rentals and royalties.

Applicant: Kevin J. Severson

Bidder	Cash Payment	Price/Acre	Rental	Oil	Gas	Other



P.O.B.
X=1716,096.35
Y=519975.14

RED RIVER PARISH

T13N - R10W

RED RIVER

SL 18153

T13N - R11W



TRACT 37210 - St. Landry Parish, Louisiana

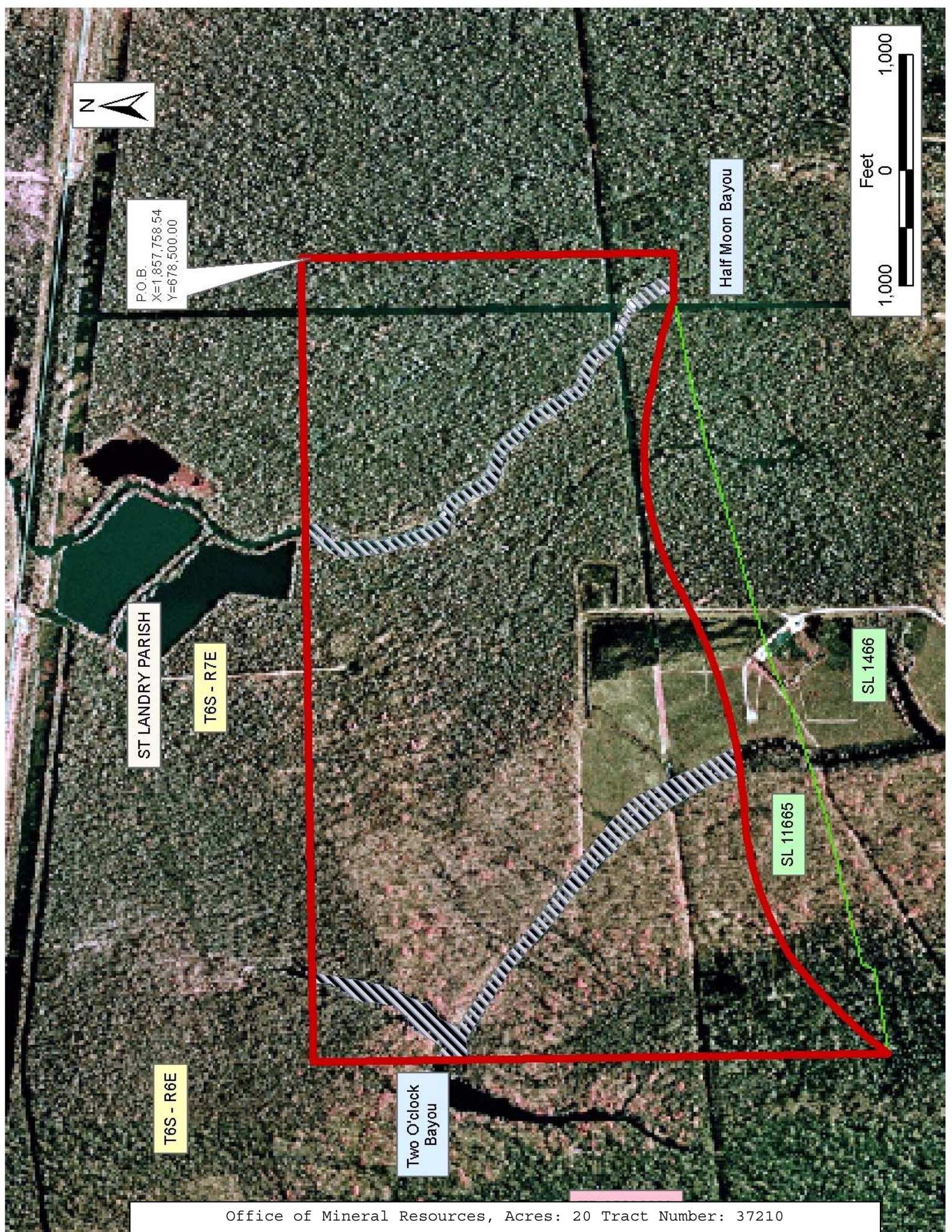
All of the lands now or formerly constituting the beds and bottoms of all water bodies of every nature and description the title of which vests in the State of Louisiana, together with all islands arising therein and other lands formed by accretion or by reliction, where allowed by law, excepting tax adjudicated lands, and not presently under mineral lease on March 9, 2005, situated in St. Landry Parish, Louisiana, and more particularly described as follows: Beginning at a point having Coordinates of X = 1,857,758.54 and Y = 678,500.00; thence South 3,218.28 to a point having Coordinates of X = 1,857,758.54 and Y = 675,281.72; thence West 410.48 feet to a point on the Northern boundary of State Lease No. 11665, as amended, having Coordinates of X = 1,857,348.06 and Y = 675,281.72; thence along the Northern boundary of said State Lease No. 11665 the following courses: along an arc having a radius of 3,610.00 feet and a center of X = 1,856,063.17 and Y = 671,908.13 whose long chord bears North 75 degrees 01 minutes 11 seconds West 738.38 feet to a point having Coordinates of X = 1,856,634.77 and Y = 675,472.59, along an arc having a radius of 2,470.00 feet and a center of X = 1,855,998.35 and Y = 673,085.98 whose long chord bears South 83 degrees 24 minutes 02 seconds West 1,812.97 feet to a point having Coordinates of X = 1,854,833.81 and Y = 675,264.22, along an arc having a radius of 4,500.00 feet and a center of X = 1,852,709.51 and Y = 679,231.26 whose long chord bears South 74 degrees 46 minutes 24 seconds West 2,015.66 feet to a point having Coordinates of X = 1,852,888.91 and Y = 674,734.84, along an arc having a radius of 2,670.00 feet and a center of X = 1,853,040.20 and Y = 672,069.13 whose long chord bears South 75 degrees 13 minutes 23 seconds West 1,067.24 feet to a point having Coordinates of X = 1,851,856.97 and Y = 674,462.63, South 63 degrees 38 minutes 14 seconds West 211.37 feet to point having Coordinates of X = 1,851,667.58 and Y = 674,368.77 and along an arc having a radius of 4,337.31 feet and a center of X = 1,854,218.24 and Y = 670,860.72 whose long chord bears South 45 degrees 55 minutes 12 seconds West 1,216.20 feet to a point having Coordinates of X = 1,850,793.90 and Y = 673,522.71; thence North 4,977.29 feet to a point having Coordinates of X = 1,850,793.90 and Y = 678,500.00; thence East 6,964.64 feet to the point of beginning, containing approximately **20 acres**, all as more particularly outlined on a plat on file in the Office of Mineral Resources, Department of Natural Resources. All bearings, distances and coordinates are based on Louisiana Coordinate System of 1927, (North or South Zone), where applicable.

NOTE: The above description of the Tract nominated for lease has been provided and corrected, where required, exclusively by the nomination party. Any mineral lease selected from this Tract and awarded by the Louisiana State Mineral Board shall be without warranty of any kind, either express, implied, or statutory, including, but not limited to, the implied warranties of merchantability and fitness for a particular purpose. Should the mineral lease awarded by the Louisiana State Mineral Board be subsequently modified, cancelled or abrogated due to the existence of conflicting leases, operating agreements, private claims or

other future obligations or conditions which may affect all or any portion of the leased Tract, it shall not relieve the Lessee of the obligation to pay any bonus due thereon to the Louisiana State Mineral Board, nor shall the Louisiana State Mineral Board be obligated to refund any consideration paid by the Lessor prior to such modification, cancellation, or abrogation, including, but not limited to, bonuses, rentals and royalties.

Applicant: Krotz Springs Properties

Bidder	Cash Payment	Price/Acre	Rental	Oil	Gas	Other



P.O.B.
X=1,857,758.54
Y=678,500.00

ST LANDRY PARISH

T6S - R7E

T6S - R6E

Two O'clock Bayou

Half Moon Bayou

SL 1466

SL 11665



TRACT 37211 - Cameron Parish, Louisiana

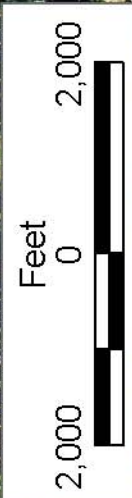
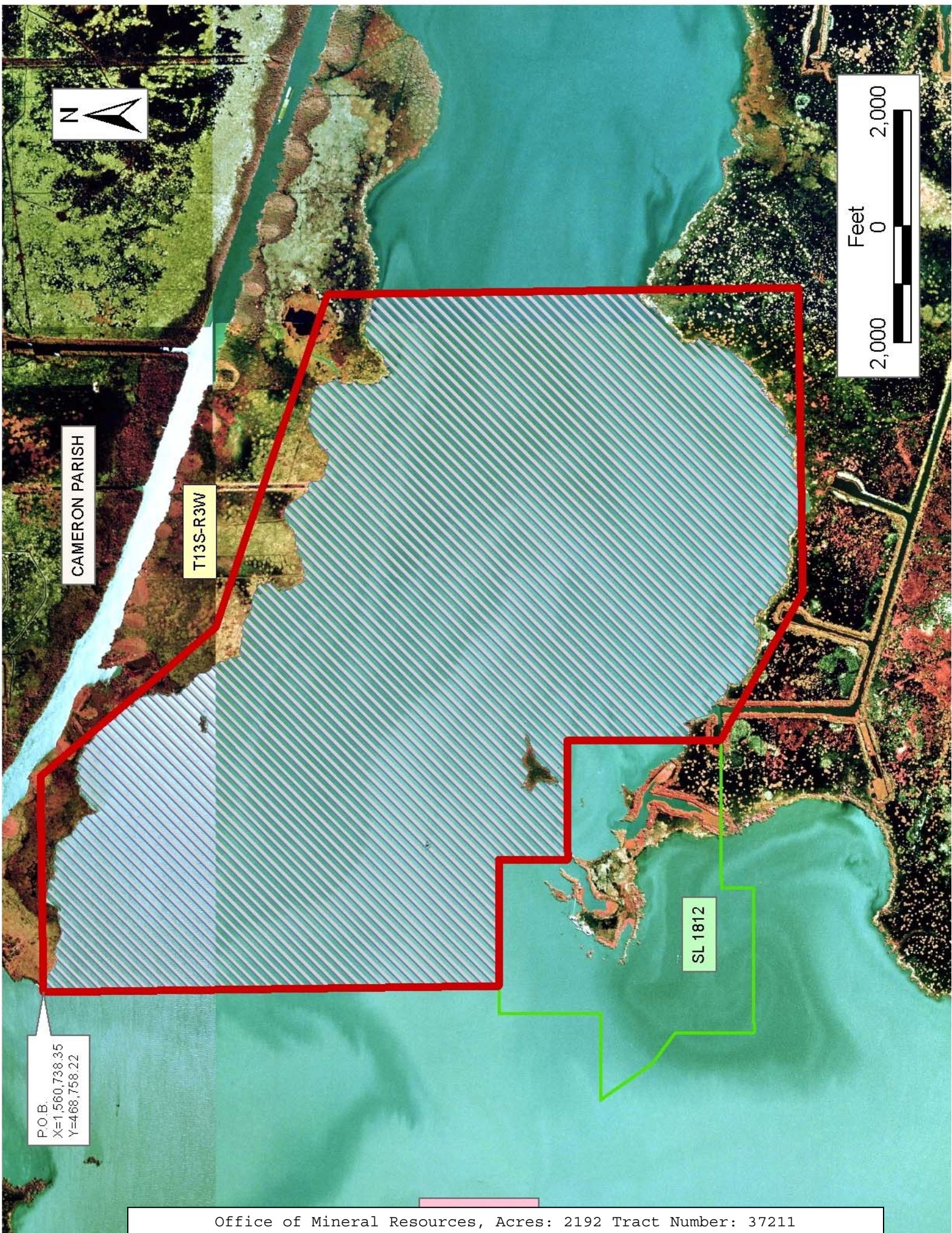
All of the lands now or formerly constituting the beds and bottoms of all water bodies of every nature and description the title of which vests in the State of Louisiana, together with all islands arising therein and other lands formed by accretion or by reliction, where allowed by law, excepting tax adjudicated lands, and not presently under mineral lease on March 9, 2005, situated in Cameron Parish, Louisiana, and more particularly described as follows: Beginning and a point having Coordinates of X = 1,560,738.35 and Y = 468,758.22; thence East 3,717.73 feet to a point having Coordinates of X = 1,564,456.07 and Y = 468,758.22; thence South 39 degrees 28 minutes 21 seconds East 3,954.16 feet to a point having Coordinates of X = 1,566,969.77 and Y = 465,705.89; thence South 70 degrees 39 minutes 08 seconds East 6,037.93 feet to a point having Coordinates of X = 1,572,666.71 and Y = 463,705.52; thence South 8,105.91 feet to a point having Coordinates of X = 1,572,666.71 and Y = 455,599.61; thence West 5,234.44 feet to a point having Coordinates of X = 1,567,432.27 and Y = 455,599.61; thence North 60 degrees 10 minutes 57 seconds West 2,914.91 feet to the Southeast corner of State Lease No. 1812 having Coordinates of X = 1,564,903.26 and Y = 457,049.02; thence along the East and North boundaries of said State Lease No. 1812 the following courses and distances: North 0 degrees 42 minutes 06 seconds East 2,640.00 feet to a point having Coordinates of X = 1,564,935.59 and Y = 459,688.82, North 89 degrees 17 minutes 54 seconds West 2,040.70 feet to a point having Coordinates of X = 1,562,895.04 and Y = 459,713.81, North 0 degrees 42 minutes 6 seconds East 1,187.20 feet to a point having Coordinates of X = 1,562,909.58 and Y = 460,900.92, and North 89 degrees 17 minutes 54 seconds West 2,171.40 feet to a point having Coordinates of X = 1,560,738.35 and Y = 460,927.51; thence North 7830.71 feet, to the point of beginning, containing approximately **2,192.00 acres**, all as more particularly outlined on a plat on file in the Office of Mineral Resources, Department of Natural Resources. All bearings, distances and coordinates are based on Louisiana Coordinate System of 1927, (North or South Zone), where applicable.

NOTE: The above description of the Tract nominated for lease has been provided and corrected, where required, exclusively by the nomination party. Any mineral lease selected from this Tract and awarded by the Louisiana State Mineral Board shall be without warranty of any kind, either express, implied, or statutory, including, but not limited to, the implied warranties of merchantability and fitness for a particular purpose. Should the mineral lease awarded by the Louisiana State Mineral Board be subsequently modified, cancelled or abrogated due to the existence of conflicting leases, operating agreements, private claims or other future obligations or conditions which may affect all or any portion of the leased Tract, it shall not relieve the Lessee of the obligation to pay any bonus due thereon to the Louisiana State Mineral Board, nor shall the Louisiana State Mineral Board be obligated to refund any consideration paid by the Lessor prior to such modification, cancellation, or abrogation, including, but not limited to, bonuses, rentals and royalties.

NOTE: The State of Louisiana does hereby reserve, and this lease shall be subject to, the imprescriptible right of surface use in the nature of a servitude in favor of the Department of Natural Resources, including its Offices and Commissions, for the sole purpose of implementing, constructing, servicing and maintaining approved coastal zone management and/or restoration projects. Utilization of any and all rights derived under this lease by the mineral lessee, its agents, successors or assigns, shall not interfere with nor hinder the reasonable surface use by the Department of Natural Resources, its Offices or Commissions, as herein above reserved.

Applicant: Anchor Land & Exploration Company, LLC

Bidder	Cash Payment	Price/Acre	Rental	Oil	Gas	Other



CAMERON PARISH

T13S-R3W

SL 1812

P.O.B.
X=1,560,738.35
Y=468,758.22

TRACT 37212 - Cameron Parish, Louisiana

All of the lands now or formerly constituting the beds and bottoms of all water bodies of every nature and description the title of which vests in the State of Louisiana, together with all islands arising therein and other lands formed by accretion or by reliction, where allowed by law, excepting tax adjudicated lands, and not presently under mineral lease on March 9, 2005, situated in Cameron Parish, Louisiana, and more particularly described as follows: Beginning and a point having Coordinates of X = 1,572,666.71 and Y = 463,705.52; thence South 74 degrees 16 minutes 35 seconds East 9,472.10 feet to a point having Coordinates of X = 1,581,784.36 and Y = 461,138.58; thence South 4,683.91 feet to a point having Coordinates of X = 1,581,784.36 and Y = 456,454.67; thence East 3,165.29 feet to a point having Coordinates of X = 1,584,949.65 and Y = 456,454.67; thence South 7,149.04 feet to a point having Coordinates of X = 1,584,949.65 and Y = 449,305.63; thence North 6,293.98 feet to a point having Coordinates of X = 1,577,830.56 and Y = 455,599.61; thence West 1,705.11 feet to a point having Coordinates of X = 1,576,125.45 and Y = 455,599.61; thence North 64 degrees 5 minutes 13 seconds West 3,845.36 feet to a point having Coordinates of X = 1,572,666.71 and Y = 457,280.06; thence North 6,425.46 feet to the point of beginning, containing approximately **1,947 acres**, all as more particularly outlined on a plat on file in the Office of Mineral Resources, Department of Natural Resources. All bearings, distances and coordinates are based on Louisiana Coordinate System of 1927, (North or South Zone), where applicable.

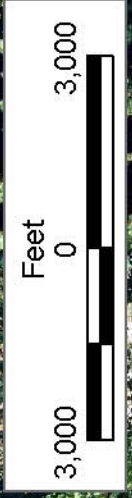
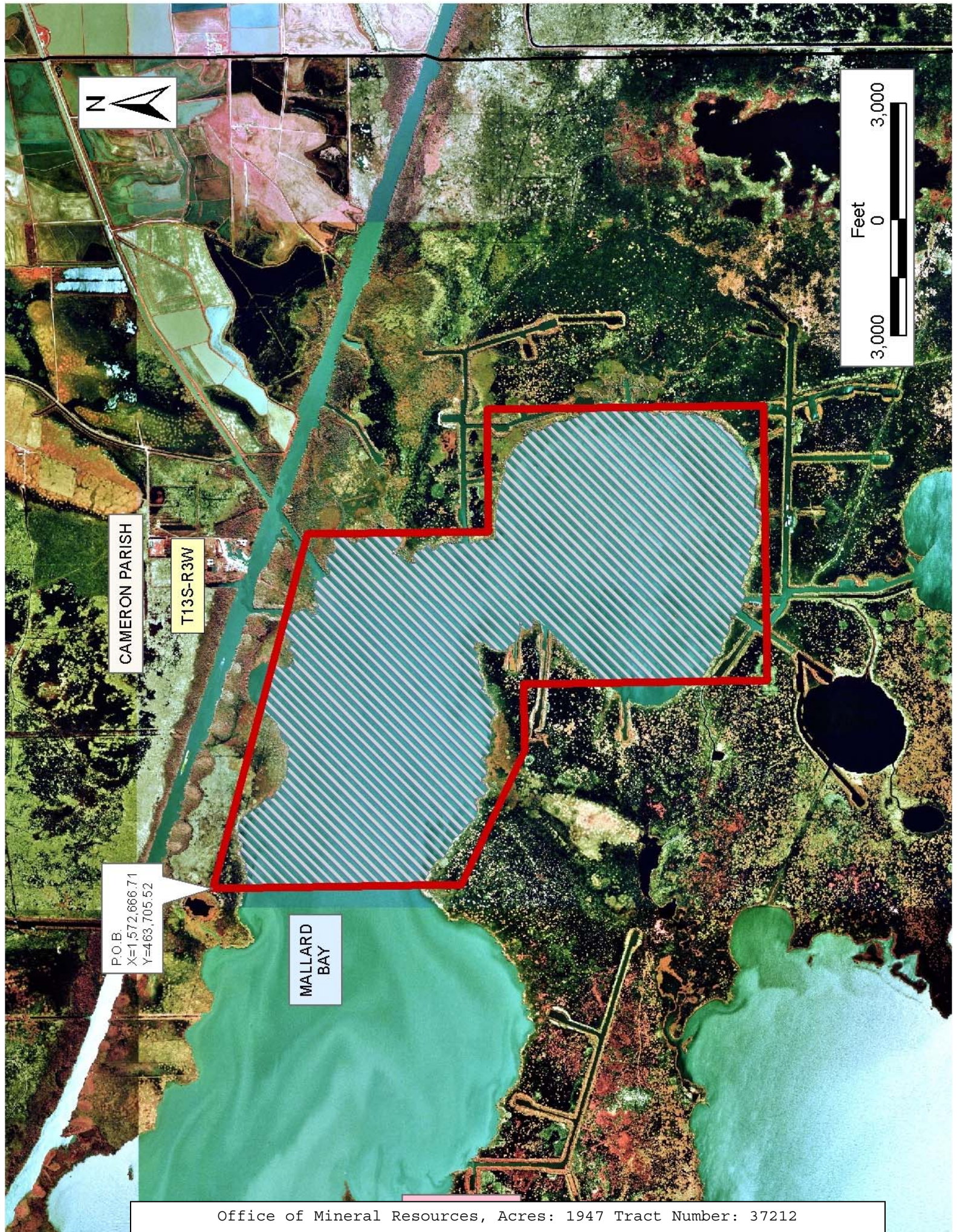
NOTE: The above description of the Tract nominated for lease has been provided and corrected, where required, exclusively by the nomination party. Any mineral lease selected from this Tract and awarded by the Louisiana State Mineral Board shall be without warranty of any kind, either express, implied, or statutory, including, but not limited to, the implied warranties of merchantability and fitness for a particular purpose. Should the mineral lease awarded by the Louisiana State Mineral Board be subsequently modified, cancelled or abrogated due to the existence of conflicting leases, operating agreements, private claims or other future obligations or conditions which may affect all or any portion of the leased Tract, it shall not relieve the Lessee of the obligation to pay any bonus due thereon to the Louisiana State Mineral Board, nor shall the Louisiana State Mineral Board be obligated to refund any consideration paid by the Lessor prior to such modification, cancellation, or abrogation, including, but not limited to, bonuses, rentals and royalties.

NOTE: The State of Louisiana does hereby reserve, and this lease shall be subject to, the imprescriptible right of surface use in the nature of a servitude in favor of the Department of Natural Resources, including its Offices and Commissions, for the sole purpose of implementing, constructing, servicing and maintaining approved coastal zone management and/or restoration projects. Utilization of any and all rights derived under this lease by the mineral lessee, its agents, successors or assigns,

shall not interfere with nor hinder the reasonable surface use by the Department of Natural Resources, its Offices or Commissions, as herein above reserved.

Applicant: Anchor Land & Exploration Company, LLC

Bidder	Cash Payment	Price/Acre	Rental	Oil	Gas	Other



CAMERON PARISH

T13S-R3W

P.O.B.
X=1,572,666.71
Y=463,705.52

MALLARD BAY

TRACT 37213 - St. Mary Parish, Louisiana

All of the lands now or formerly constituting the beds and bottoms of all water bodies of every nature and description the title of which vests in the State of Louisiana, together with all islands arising therein and other lands formed by accretion or by reliction, where allowed by law, excepting tax adjudicated lands, and not presently under mineral lease on March 9, 2005, situated in St. Mary Parish, Louisiana, and more particularly described as follows: Beginning at a point having Coordinates of X = 1,922,640.00 and Y = 452,680.00; thence East 12,162.79 feet to a point having Coordinates of X = 1,934,802.79 and Y = 452,680.00; thence South 60 degrees 17 minutes 31 seconds East 7,273.18 feet to a point having Coordinates of X = 1,941,120.00 and Y = 449,075.55; thence South 13,675.55 feet to the Northeast corner of State Lease No. 17646 having Coordinates of X = 1,941,120.00 and Y = 435,400.00; thence West 18,480.00 feet along the Northern boundary of said State Lease No. 17646 to the Northwest corner of State Lease No. 17646 having Coordinates of X = 1,922,640.00 and Y = 435,400.00; thence North 3,820.59 feet to a point on the Southwest boundary of State Lease No. 18327, having Coordinates of X = 1,922,640.00 and Y = 439,220.59; thence along the boundary of State Lease No. 18327 the following courses and distances: South 71 degrees 40 minutes 00 seconds East 3,293.10 feet to a point having Coordinates of X = 1,925,765.95 and Y = 438,184.76; thence North 09 degrees 03 minutes 00 seconds East 806.96 feet to a point having Coordinates of X = 1,925,892.88 and Y = 438,981.67; thence North 71 degrees 40 minutes 00 seconds West 3,304.53 feet to the Northwest point of State Lease No. 18327 having Coordinates of X = 1,922,756.08 and Y = 440,021.09; thence South 23 degrees 47 minutes 02 seconds West 287.84 feet to a point having Coordinates of X = 1,922,640.00 and Y = 439,757.70; thence North 12,922.30 feet to the point of beginning, **LESS AND EXCEPT** all that portion of State Lease No. 5623, as amended, that may lie within the above described tract, containing approximately **209 acres**, all as more particularly outlined on a plat on file in the Office of Mineral Resources, Department of Natural Resources. All bearings, distances and coordinates are based on Louisiana Coordinate System of 1927, (North or South Zone), where applicable.

NOTE: The above description of the Tract nominated for lease has been provided and corrected, where required, exclusively by the nomination party. Any mineral lease selected from this Tract and awarded by the Louisiana State Mineral Board shall be without warranty of any kind, either express, implied, or statutory, including, but not limited to, the implied warranties of merchantability and fitness for a particular purpose. Should the mineral lease awarded by the Louisiana State Mineral Board be subsequently modified, cancelled or abrogated due to the existence of conflicting leases, operating agreements, private claims or other future obligations or conditions which may affect all or any portion of the leased Tract, it shall not relieve the Lessee of the obligation to pay any bonus due thereon to the Louisiana State Mineral Board, nor shall the Louisiana State Mineral Board be obligated to refund any consideration

paid by the Lessor prior to such modification, cancellation, or abrogation, including, but not limited to, bonuses, rentals and royalties.

NOTE: The State of Louisiana does hereby reserve, and this lease shall be subject to, the imprescriptible right of surface use in the nature of a servitude in favor of the Department of Natural Resources, including its Offices and Commissions, for the sole purpose of implementing, constructing, servicing and maintaining approved coastal zone management and/or restoration projects. Utilization of any and all rights derived under this lease by the mineral lessee, its agents, successors or assigns, shall not interfere with nor hinder the reasonable surface use by the Department of Natural Resources, its Offices or Commissions, as herein above reserved.

Applicant: Acadian Land Services, L.L.C.

Bidder	Cash Payment	Price/Acre	Rental	Oil	Gas	Other



ST MARY PARISH

T13S - R9E

CHARENTON DRAINAGE AND NAVIGATION CANAL

P.O.B.
X=1,922,640.00
Y=452,680.00

BAYOU
TECHE

SL 17646

SL 18327

SL 5623



TRACT 37214 - St. Charles Parish, Louisiana

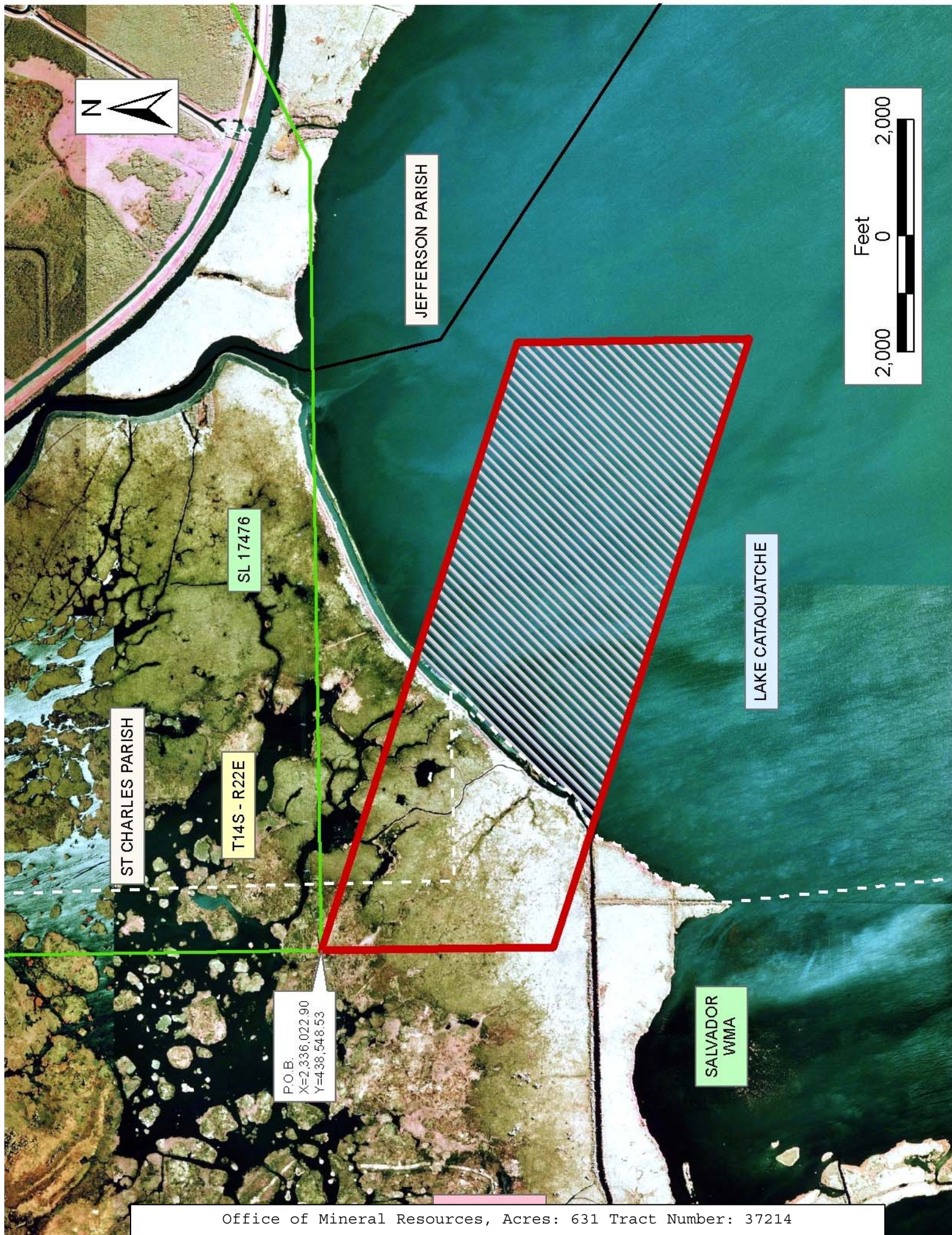
All of the lands now or formerly constituting the beds and bottoms of all water bodies of every nature and description the title of which vests in the State of Louisiana, together with all islands arising therein and other lands formed by accretion or by reliction, where allowed by law, excepting tax adjudicated lands, and not presently under mineral lease on March 9, 2005, situated in St. Charles Parish, Louisiana, and more particularly described as follows: Beginning at the Southwest Corner of State Lease No. 17476, as amended, having Coordinates of X = 2,336,022.90 and Y = 438,548.53; thence South 71 degrees 17 minutes 03 seconds East 11,000.00 feet to a point having Coordinates of X = 2,346,441.24 and Y = 435,018.92; thence South 4,000.00 feet to a point having Coordinates of X = 2,346,441.24 and Y = 431,018.92; thence North 71 degrees 17 minutes 03 seconds West 11,000.00 feet to a point having Coordinates of X = 2,336,022.90 and Y = 434,548.53; thence North 4,000.00 feet to the point of beginning, **LESS AND EXCEPT** all that portion of Salvador Wildlife Management Area that lies within the above described tract, containing approximately **631 acres**, all as more particularly outlined on a plat on file in the Office of Mineral Resources, Department of Natural Resources. All bearings, distances and coordinates are based on Louisiana Coordinate System of 1927, (North or South Zone), where applicable.

NOTE: The above description of the Tract nominated for lease has been provided and corrected, where required, exclusively by the nomination party. Any mineral lease selected from this Tract and awarded by the Louisiana State Mineral Board shall be without warranty of any kind, either express, implied, or statutory, including, but not limited to, the implied warranties of merchantability and fitness for a particular purpose. Should the mineral lease awarded by the Louisiana State Mineral Board be subsequently modified, cancelled or abrogated due to the existence of conflicting leases, operating agreements, private claims or other future obligations or conditions which may affect all or any portion of the leased Tract, it shall not relieve the Lessee of the obligation to pay any bonus due thereon to the Louisiana State Mineral Board, nor shall the Louisiana State Mineral Board be obligated to refund any consideration paid by the Lessor prior to such modification, cancellation, or abrogation, including, but not limited to, bonuses, rentals and royalties.

NOTE: The State of Louisiana does hereby reserve, and this lease shall be subject to, the imprescriptible right of surface use in the nature of a servitude in favor of the Department of Natural Resources, including its Offices and Commissions, for the sole purpose of implementing, constructing, servicing and maintaining approved coastal zone management and/or restoration projects. Utilization of any and all rights derived under this lease by the mineral lessee, its agents, successors or assigns, shall not interfere with nor hinder the reasonable surface use by the Department of Natural Resources, its Offices or Commissions, as herein above reserved.

Applicant: Allen & Kirmse, Ltd.

Bidder	Cash Payment	Price/Acre	Rental	Oil	Gas	Other



JEFFERSON PARISH

SL 17476

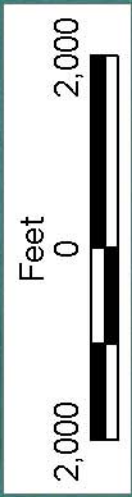
ST CHARLES PARISH

T14S - R22E

LAKE CATAOUATCHE

SALVADOR WMA

P.O.B.
X=2,336,022.90
Y=438,548.53



TRACT 37215 - St. Charles Parish, Louisiana

All of the lands now or formerly constituting the beds and bottoms of all water bodies of every nature and description the title of which vests in the State of Louisiana, together with all islands arising therein and other lands formed by accretion or by reliction, where allowed by law, excepting tax adjudicated lands, and not presently under mineral lease on March 9, 2005, situated in St. Charles Parish, Louisiana, and more particularly described as follows: Beginning at a point having Coordinates of X = 2,336,022.90 and Y = 434,548.53; thence South 71 degrees 17 minutes 03 seconds East 11,000.00 feet to a point having Coordinates of X = 2,346,441.24 and Y = 431,018.92; thence South 4,000.00 feet to a point having Coordinates of X = 2,346,441.24 and Y = 427,018.92; thence North 71 degrees 17 minutes 03 seconds West 11,000.00 feet to a point having Coordinates of X = 2,336,022.90 and Y = 430,548.53; thence North 4,000.00 feet to the point of beginning, **LESS AND EXCEPT** all that portion of Salvador Wildlife Management Area that may lie within the above described tract, containing approximately **882 acres**, all as more particularly outlined on a plat on file in the Office of Mineral Resources, Department of Natural Resources. All bearings, distances and coordinates are based on Louisiana Coordinate System of 1927, (North or South Zone), where applicable.

NOTE: The above description of the Tract nominated for lease has been provided and corrected, where required, exclusively by the nomination party. Any mineral lease selected from this Tract and awarded by the Louisiana State Mineral Board shall be without warranty of any kind, either express, implied, or statutory, including, but not limited to, the implied warranties of merchantability and fitness for a particular purpose. Should the mineral lease awarded by the Louisiana State Mineral Board be subsequently modified, cancelled or abrogated due to the existence of conflicting leases, operating agreements, private claims or other future obligations or conditions which may affect all or any portion of the leased Tract, it shall not relieve the Lessee of the obligation to pay any bonus due thereon to the Louisiana State Mineral Board, nor shall the Louisiana State Mineral Board be obligated to refund any consideration paid by the Lessor prior to such modification, cancellation, or abrogation, including, but not limited to, bonuses, rentals and royalties.

NOTE: The State of Louisiana does hereby reserve, and this lease shall be subject to, the imprescriptible right of surface use in the nature of a servitude in favor of the Department of Natural Resources, including its Offices and Commissions, for the sole purpose of implementing, constructing, servicing and maintaining approved coastal zone management and/or restoration projects. Utilization of any and all rights derived under this lease by the mineral lessee, its agents, successors or assigns, shall not interfere with nor hinder the reasonable surface use by the Department of Natural Resources, its Offices or Commissions, as herein above reserved.

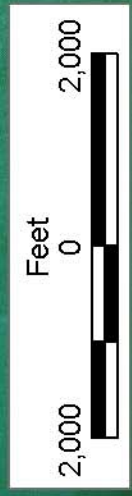
Applicant: Allen & Kirmse, Ltd.

Bidder	Cash Payment	Price/Acre	Rental	Oil	Gas	Other



JEFFERSON
PARISH

ST CHARLES
PARISH



LAKE CATAOUATCHE

T14S - R22E

P.O.B.
X=2,336,022.90
Y=434,548.53

SALVADOR
WMA

TRACT 37216 - St. Charles Parish, Louisiana

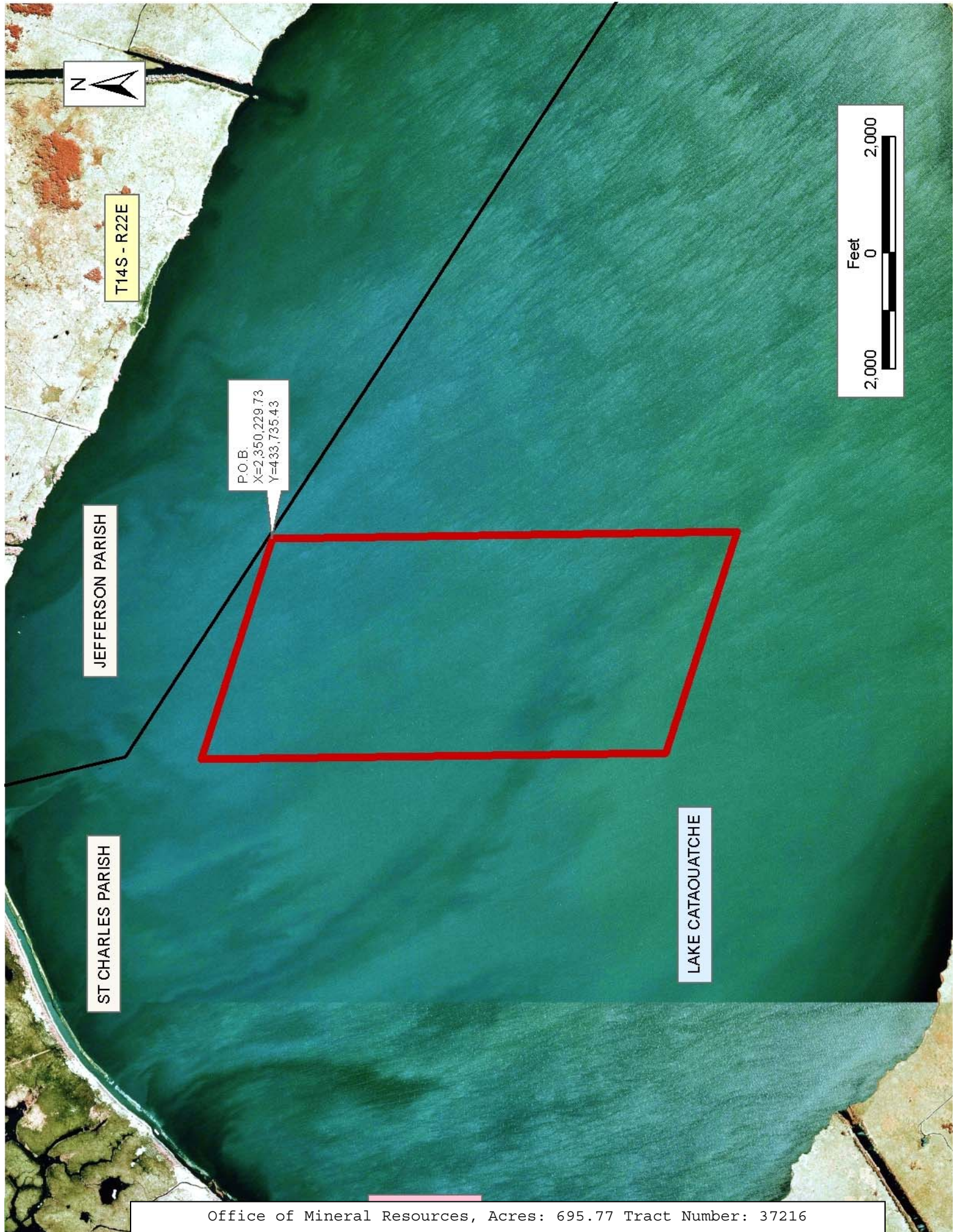
All of the lands now or formerly constituting the beds and bottoms of all water bodies of every nature and description the title of which vests in the State of Louisiana, together with all islands arising therein and other lands formed by accretion or by reliction, where allowed by law, excepting tax adjudicated lands, and not presently under mineral lease on March 9, 2005, situated in St. Charles Parish, Louisiana, and more particularly described as follows: Beginning at a point having Coordinates of X = 2,350,229.73 and Y = 433,735.43; thence South 8,000.00 feet to a point having Coordinates of X = 2,350,229.73 and Y = 425,735.43; thence North 71 degrees 17 minutes 03 seconds West 4,000.00 feet to a point having Coordinates of X = 2,346,441.24 and Y = 427,018.92; thence North 8,000.00 feet to a point having Coordinates of X = 2,346,441.24 and Y = 435,018.92; thence South 71 degrees 17 minutes 03 seconds East 4,000.00 feet to the point of beginning, containing approximately **695.77 acres**, all as more particularly outlined on a plat on file in the Office of Mineral Resources, Department of Natural Resources. All bearings, distances and coordinates are based on Louisiana Coordinate System of 1927, (North or South Zone), where applicable.

NOTE: The above description of the Tract nominated for lease has been provided and corrected, where required, exclusively by the nomination party. Any mineral lease selected from this Tract and awarded by the Louisiana State Mineral Board shall be without warranty of any kind, either express, implied, or statutory, including, but not limited to, the implied warranties of merchantability and fitness for a particular purpose. Should the mineral lease awarded by the Louisiana State Mineral Board be subsequently modified, cancelled or abrogated due to the existence of conflicting leases, operating agreements, private claims or other future obligations or conditions which may affect all or any portion of the leased Tract, it shall not relieve the Lessee of the obligation to pay any bonus due thereon to the Louisiana State Mineral Board, nor shall the Louisiana State Mineral Board be obligated to refund any consideration paid by the Lessor prior to such modification, cancellation, or abrogation, including, but not limited to, bonuses, rentals and royalties.

NOTE: The State of Louisiana does hereby reserve, and this lease shall be subject to, the imprescriptible right of surface use in the nature of a servitude in favor of the Department of Natural Resources, including its Offices and Commissions, for the sole purpose of implementing, constructing, servicing and maintaining approved coastal zone management and/or restoration projects. Utilization of any and all rights derived under this lease by the mineral lessee, its agents, successors or assigns, shall not interfere with nor hinder the reasonable surface use by the Department of Natural Resources, its Offices or Commissions, as herein above reserved.

Applicant: Allen & Kirmse, Ltd.

Bidder	Cash Payment	Price/Acre	Rental	Oil	Gas	Other



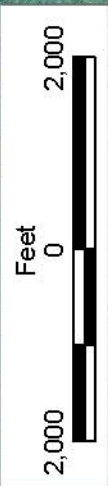
T14S - R22E

P.O.B.
X=2,350,229.73
Y=433,735.43

JEFFERSON PARISH

ST CHARLES PARISH

LAKE CATAOUATCHE



TRACT 37217 - St. Mary Parish, Louisiana

All of the lands now or formerly constituting the beds and bottoms of all water bodies of every nature and description the title of which vests in the State of Louisiana, together with all islands arising therein and other lands formed by accretion or by reliction, where allowed by law, excepting tax adjudicated lands, and not presently under mineral lease on March 9, 2005, situated in St. Mary Parish, Louisiana, and more particularly described as follows: Beginning at the Northeast corner of State Lease No. 17646 having Coordinates of X = 1,941,120.00 and Y = 435,400.00; thence East 18,480.00 feet to a point having Coordinates of X = 1,959,600.00 and Y = 435,400.00; thence South 17,280.00 feet to a point having Coordinates of X = 1,959,600.00 and Y = 418,120.00; thence West 18,480.00 feet to a point being the Southeast corner of State Lease No. 17646 having Coordinates of X = 1,941,120.00 and Y = 418,120.00; thence along the Eastern boundary of said State Lease No. 17646, 17,280.00 feet to the point of beginning, containing approximately **124 acres**, all as more particularly outlined on a plat on file in the Office of Mineral Resources, Department of Natural Resources. All bearings, distances and coordinates are based on Louisiana Coordinate System of 1927, (North or South Zone), where applicable.

NOTE: The above description of the Tract nominated for lease has been provided and corrected, where required, exclusively by the nomination party. Any mineral lease selected from this Tract and awarded by the Louisiana State Mineral Board shall be without warranty of any kind, either express, implied, or statutory, including, but not limited to, the implied warranties of merchantability and fitness for a particular purpose. Should the mineral lease awarded by the Louisiana State Mineral Board be subsequently modified, cancelled or abrogated due to the existence of conflicting leases, operating agreements, private claims or other future obligations or conditions which may affect all or any portion of the leased Tract, it shall not relieve the Lessee of the obligation to pay any bonus due thereon to the Louisiana State Mineral Board, nor shall the Louisiana State Mineral Board be obligated to refund any consideration paid by the Lessor prior to such modification, cancellation, or abrogation, including, but not limited to, bonuses, rentals and royalties.

NOTE: The State of Louisiana does hereby reserve, and this lease shall be subject to, the imprescriptible right of surface use in the nature of a servitude in favor of the Department of Natural Resources, including its Offices and Commissions, for the sole purpose of implementing, constructing, servicing and maintaining approved coastal zone management and/or restoration projects. Utilization of any and all rights derived under this lease by the mineral lessee, its agents, successors or assigns, shall not interfere with nor hinder the reasonable surface use by the Department of Natural Resources, its Offices or Commissions, as herein above reserved.

Applicant: Acadian Land Services, L.L.C.

Bidder	Cash Payment	Price/Acre	Rental	Oil	Gas	Other

