

**TRACT 37199 - Portion of Block 43, Breton Sound Area, Plaquemines Parish, Louisiana**

The beds and bottoms of all water bodies belonging to the State of Louisiana located in Block 43, Breton Sound Area, together with any present lands formed by accretion to the shoreline or islands formed therein, located in Plaquemines Parish, Louisiana, owned by and not presently under mineral lease as of March 9, 2005, from the State of Louisiana, the geographical area of which is more fully described as follows: Beginning at a point being on the West line of Block 43, Breton Sound Area, having Coordinates of X = 2,709,100.00 and Y = 300,205.00; thence East 11,793.95 feet to a point on the Three Mile Decree Line derived from the June 16, 1975 Decree in the United States vs. Louisiana No.9 Original having Coordinates of X = 2,720,893.95 and Y = 300,205.00; thence along said Three Mile Decree Line the following courses: On an arc to the right with a radius of 18,240.60 feet and a chord bearing South 65 degrees 41 minutes 13 seconds West 136.01 feet to a point having Coordinates of X = 2,720,770 and Y = 300,149; South 65 degrees 54 minutes 27 seconds West 1,700.10 feet to a point having Coordinates of X = 2,719,218 and Y = 299,455; On an arc to the right with a radius of 18,240.60 feet and a chord bearing South 74 degrees 04 minutes 28 seconds West 5,178.77 feet to a point having Coordinates of X = 2,714,238 and Y = 298,034; South 71 degrees 03 minutes 08 seconds West 5,432.35 feet to a point on the West line of said Block 43 having Coordinates of X = 2,709,100.00 and Y = 296,270.08; thence North 3,934.92 feet on the West line of said Block 43 to the point of beginning, containing approximately **556.17 acres, LESS AND EXCEPT** that portion thereof, if any, lying seaward of the line three nautical miles from the coast line of Louisiana, as said three mile line has been decreed by the Supreme Court of the United States, as determined by a Special Master appointed therein, in litigation styled **United States v. State of Louisiana et al No. 9 Original**, in 1975, all as more particularly outlined on a plat in the Office of Mineral Resources, Department of Natural Resources. All bearings, distances and coordinates are based on the Louisiana Coordinate System of 1927, (South Zone).

NOTE: The above description of the Tract nominated for lease has been provided and corrected, where required, exclusively by the nomination party. Any mineral lease selected from this Tract and awarded by the Louisiana State Mineral Board shall be without warranty of any kind, either express, implied, or statutory, including, but not limited to, the implied warranties of merchantability and fitness for a particular purpose. Should the mineral lease awarded by the Louisiana State Mineral Board be subsequently modified, cancelled or abrogated due to the existence of conflicting leases, operating agreements, private claims or other future obligations or conditions which may affect all or any portion of the leased Tract, it shall not relieve the Lessee of the obligation to pay any bonus due thereon to the Louisiana State Mineral Board, nor shall the Louisiana State Mineral Board be obligated to refund any consideration

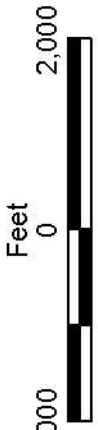
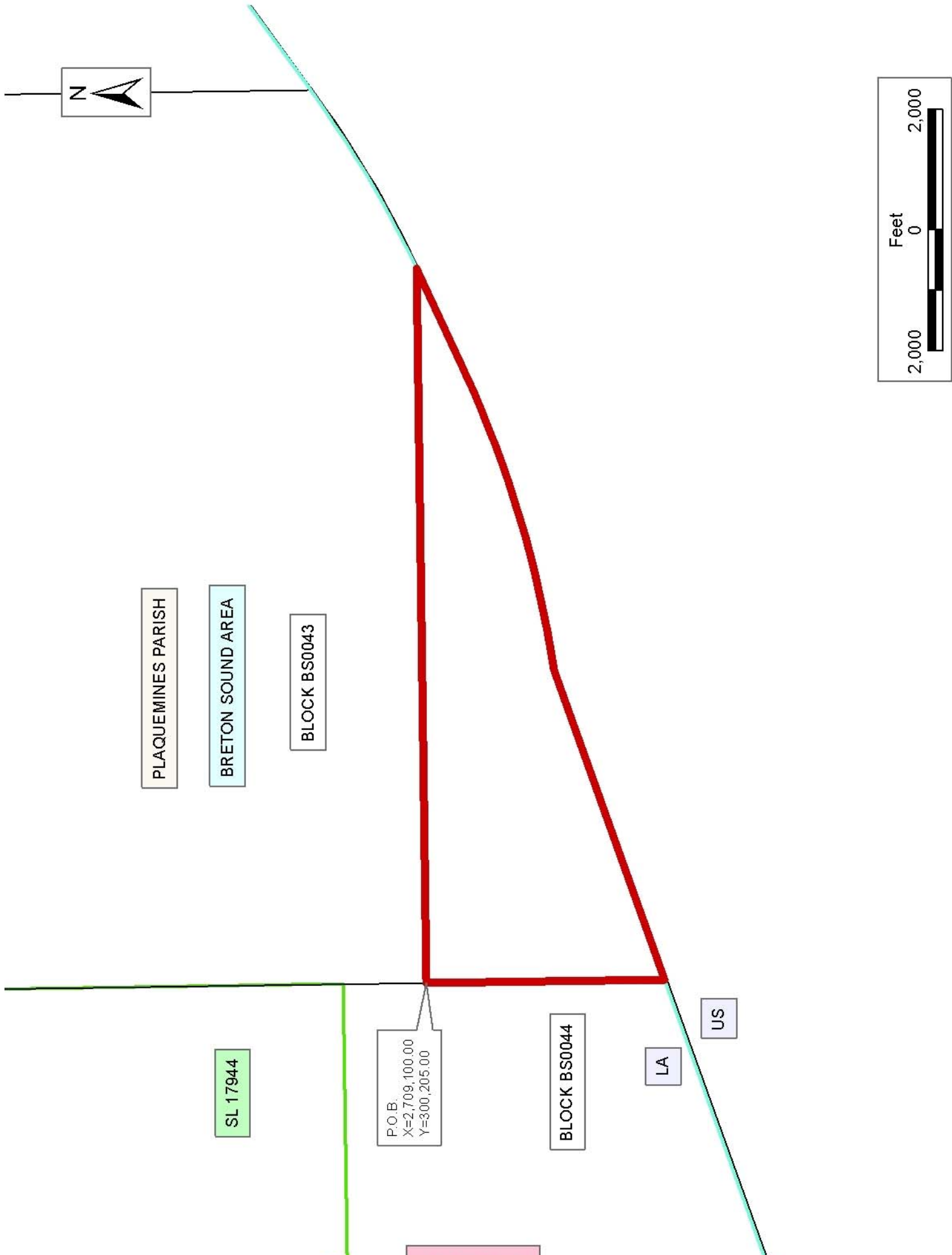
paid by the Lessor prior to such modification, cancellation, or abrogation, including, but not limited to, bonuses, rentals and royalties.

NOTE: The State of Louisiana does hereby reserve, and this lease shall be subject to, the imprescriptible right of surface use in the nature of a servitude in favor of the Department of Natural Resources, including its Offices and Commissions, for the sole purpose of implementing, constructing, servicing and maintaining approved coastal zone management and/or restoration projects. Utilization of any and all rights derived under this lease by the mineral lessee, its agents, successors or assigns, shall not interfere with nor hinder the reasonable surface use by the Department of Natural Resources, its Offices or Commissions, as herein above reserved.

NOTE: It appears, according to our records, that a portion of this Tract is located within the restrictive safety fairway area as set out by the Corps of Engineers, U.S. Army and/or the restrictive anchorage area as set out by the U.S. Coast Guard.

Applicant: Oil And Gas Interests, Inc.

Bidder	Cash Payment	Price/ Acre	Rental	Oil	Gas	Other



PLAQUEMINES PARISH

BRETON SOUND AREA

BLOCK BS0043

SL 17944

P.O.B.  
X=2,709,100.00  
Y=300,205.00

BLOCK BS0044

LA

US

**TRACT 37200 - Portion of Block 17, Eugene Island Area, Revised, St. Mary Parish, Louisiana**

The beds and bottoms of all water bodies belonging to the State of Louisiana located in Block 17, Eugene Island Area, Revised, together with any present lands formed by accretion to the shoreline or islands formed therein, located in St. Mary Parish, Louisiana, owned by and not presently under mineral lease as of March 9, 2005, from the State of Louisiana, the geographical area of which is more fully described as follows: Beginning at a point on the Atchafalaya Delta Wildlife Management Area boundary, said point also being on the East line of Block 17, Eugene Island Area, Revised, having Coordinates of X = 1,969,955.68 and Y = 250,124.15; thence South 1,979.44 feet along the East line of said Block 17 to a point having Coordinates of X = 1,969,955.68 and Y = 248,144.71; thence West 11,472.16 feet to the most Southerly Southeast corner of State Lease No. 16988 having Coordinates of X = 1,958,483.52 and Y = 248,144.71; thence along the boundary of said State Lease No. 16988 the following courses: North 550.00 feet to a point having Coordinates of X = 1,958,483.52 and Y = 248,694.71, East 3,461.08 feet to its most Easterly Southeast corner having Coordinates of X = 1,961,944.60 and Y = 248,694.71, and North 1,227.24 feet to a point, said point also being a point on the boundary of State Lease No. 7870, as amended, having Coordinates of X = 1,961,944.60 and Y = 249,921.95; thence along the boundary of said State Lease No. 7870 the following courses: North 41 degrees 23 minutes 30 seconds East 703.87 feet to a point having Coordinates of X = 1,962,410.00 and Y = 250,450.00; North 47 degrees 38 minutes 33 seconds East 460.11 feet to a point having Coordinates of X = 1,962,750.00 and Y = 250,760.00; North 51 degrees 20 minutes 25 seconds East 320.16 feet to a point having Coordinates of X = 1,963,000.00 and Y = 250,960.00; North 51 degrees 32 minutes 47 seconds East 434.17 feet to a point having Coordinates of X = 1,963,340.00 and Y = 251,230.00, North 55 degrees 07 minutes 29 seconds East 402.24 feet to a point having Coordinates of X = 1,963,670.00 and Y = 251,460.00, North 62 degrees 44 minutes 41 seconds East 371.21 feet to a point having Coordinates of X = 1,964,000.00 and Y = 251,630.00, and North 36 degrees 01 minutes 39 seconds East 565.98 feet to a point, said point also being a point on the Atchafalaya Delta Wildlife Management Area boundary having Coordinates of X = 1,964,332.90 and Y = 252,087.73; thence South 70 degrees 45 minutes 00 seconds East 5,955.78 feet along the boundary of said Atchafalaya Delta Wildlife Management Area to the point of beginning, **LESS AND EXCEPT** any portion of Atchafalaya Delta Wildlife Management Area which may lie within the above described tract, containing **583.95 acres**, all as more particularly outlined on a plat on file in the Office of Mineral Resources, Department of Natural Resources. All bearings, distances and coordinates are based on Louisiana Coordinate System of 1927, (North or South Zone).

NOTE: The above description of the Tract nominated for lease has been provided and corrected, where required, exclusively by the nomination party. Any mineral lease selected from this Tract and awarded by the Louisiana State Mineral Board shall be without warranty of any kind,

either express, implied, or statutory, including, but not limited to, the implied warranties of merchantability and fitness for a particular purpose. Should the mineral lease awarded by the Louisiana State Mineral Board be subsequently modified, cancelled or abrogated due to the existence of conflicting leases, operating agreements, private claims or other future obligations or conditions which may affect all or any portion of the leased Tract, it shall not relieve the Lessee of the obligation to pay any bonus due thereon to the Louisiana State Mineral Board, nor shall the Louisiana State Mineral Board be obligated to refund any consideration paid by the Lessor prior to such modification, cancellation, or abrogation, including, but not limited to, bonuses, rentals and royalties.

NOTE: The above described tract may be in the vicinity of existing shell reefs where drilling and dredging operations must be conducted in strict conformity with the regulations adopted by the Louisiana Department of Wildlife and Fisheries and/or the U.S. Corps of Engineers, U.S. Army.

NOTE: The State of Louisiana does hereby reserve, and this lease shall be subject to, the imprescriptible right of surface use in the nature of a servitude in favor of the Department of Natural Resources, including its Offices and Commissions, for the sole purpose of implementing, constructing, servicing and maintaining approved coastal zone management and/or restoration projects. Utilization of any and all rights derived under this lease by the mineral lessee, its agents, successors or assigns, shall not interfere with nor hinder the reasonable surface use by the Department of Natural Resources, its Offices or Commissions, as herein above reserved.

NOTE: The Department of Wildlife and Fisheries has designated certain areas in the coastal waters of the State of Louisiana as Oyster Seed Bed Areas. The exact location of those Seed Bed Areas must be obtained from the Department of Wildlife and Fisheries and any work done under a mineral lease from the State of Louisiana may necessarily be conducted in conformity with the rules and regulations promulgated by the said Department of Wildlife and Fisheries for Oyster Seed Bed Areas.

Applicant: Acadian Land Services, L.L.C.

Bidder	Cash Payment	Price/ Acre	Rental	Oil	Gas	Other



EUGENE ISLAND AREA, REVISED

P.O.B.  
X=1,969,955.68  
Y=250,124.15

SL 7870

SL 16988

SL 1536

SL 16985

SL 17121

SL 14492

SL 14354

SL 17667

ST MARY PARISH

BLOCK E10017



**TRACT 37201 - Portion of Block 16, Eugene Island Area, Revised, St. Mary Parish, Louisiana**

The beds and bottoms of all water bodies belonging to the State of Louisiana located in Block 16, Eugene Island Area, Revised, together with any present lands formed by accretion to the shoreline or islands formed therein, located in St. Mary Parish, Louisiana, owned by and not presently under mineral lease as of March 9, 2005, from the State of Louisiana, the geographical area of which is more fully described as follows: Beginning at a point on the Atchafalaya Delta Wildlife Management Area boundary, said point also being a point on the West line of Block 16, Eugene Island Area, Revised, having Coordinates of X = 1,969,955.68 and Y = 250,124.15; thence South 70 degrees 45 minutes 00 seconds East 3,946.32 feet along the Southern boundary of said Atchafalaya Delta Wildlife Management Area to a point having Coordinates of X = 1,973,681.37 and Y = 248,823.08; thence South 47 degrees 16 minutes 21 seconds West 2,465.81 feet to a point having Coordinates of X = 1,971,870.00 and Y = 247,150.00; thence South 31 degrees 27 minutes 51 seconds West 298.46 feet to a point on the North line of State Lease No. 17667 having Coordinates of X = 1,971,714.21 and Y = 246,895.42; thence West 1,758.53 feet along the North line of said State Lease No. 17667 to its Northwest corner, said point also being a point on the West line of said Block 16 having Coordinates of X = 1,969,955.68 and Y = 246,895.42; thence North 3,228.73 feet along the West line of said Block 16 to the point of beginning, **LESS AND EXCEPT** any portion of the Atchafalaya Delta Wildlife Management Area which may lie within the above described tract and all that portion of State Lease No. 17688 that may lie within the above described tract, containing approximately **174.69 acres**, all as more particularly outlined on a plat on file in the Office of Mineral Resources, Department of Natural Resources. All bearings, distances and coordinates are based on Louisiana Coordinate System of 1927, (North or South Zone).

NOTE: The above description of the Tract nominated for lease has been provided and corrected, where required, exclusively by the nomination party. Any mineral lease selected from this Tract and awarded by the Louisiana State Mineral Board shall be without warranty of any kind, either express, implied, or statutory, including, but not limited to, the implied warranties of merchantability and fitness for a particular purpose. Should the mineral lease awarded by the Louisiana State Mineral Board be subsequently modified, cancelled or abrogated due to the existence of conflicting leases, operating agreements, private claims or other future obligations or conditions which may affect all or any portion of the leased Tract, it shall not relieve the Lessee of the obligation to pay any bonus due thereon to the Louisiana State Mineral Board, nor shall the Louisiana State Mineral Board be obligated to refund any consideration paid by the Lessor prior to such modification, cancellation, or abrogation, including, but not limited to, bonuses, rentals and royalties.

NOTE: The above described tract may be in the vicinity of existing shell reefs where drilling and dredging operations must be conducted in strict

conformity with the regulations adopted by the Louisiana Department of Wildlife and Fisheries and/or the U.S. Corps of Engineers, U.S. Army.

NOTE: The State of Louisiana does hereby reserve, and this lease shall be subject to, the imprescriptible right of surface use in the nature of a servitude in favor of the Department of Natural Resources, including its Offices and Commissions, for the sole purpose of implementing, constructing, servicing and maintaining approved coastal zone management and/or restoration projects. Utilization of any and all rights derived under this lease by the mineral lessee, its agents, successors or assigns, shall not interfere with nor hinder the reasonable surface use by the Department of Natural Resources, its Offices or Commissions, as herein above reserved.

NOTE: The Department of Wildlife and Fisheries has designated certain areas in the coastal waters of the State of Louisiana as Oyster Seed Bed Areas. The exact location of those Seed Bed Areas must be obtained from the Department of Wildlife and Fisheries and any work done under a mineral lease from the State of Louisiana may necessarily be conducted in conformity with the rules and regulations promulgated by the said Department of Wildlife and Fisheries for Oyster Seed Bed Areas.

Applicant: Acadian Land Services, L.L.C.

Bidder	Cash Payment	Price/ Acre	Rental	Oil	Gas	Other





ST MARY PARISH

EUGENE ISLAND AREA, REVISED

BLOCK E10016

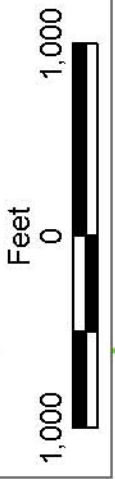
Atchafalaya Delta  
VMA

BLOCK E10017

P.O.B.  
X=1,969,955.68  
Y=250,124.15

SL 17668

SL 17667



**TRACT 37202 - Portion of Block 16, Eugene Island Area, Revised, St. Mary Parish, Louisiana**

The beds and bottoms of all water bodies belonging to the State of Louisiana located in Block 16, Eugene Island Area, Revised, together with any present lands formed by accretion to the shoreline or islands formed therein, located in St. Mary Parish, Louisiana, owned by and not presently under mineral lease as of March 9, 2005, from the State of Louisiana, the geographical area of which is more fully described as follows: Beginning at the Southeast corner of Block 16, Eugene Island Area, Revised, having Coordinates of X = 1,984,977.84 and Y = 240,895.42; thence West 10,022.16 feet along the South line of said Block 16 to the Southeast corner of State Lease No. 17667 having Coordinates of X = 1,974,955.68 and Y = 240,895.42; thence North 1,891.79 feet along the East line of said State Lease No. 17667 to the most Southerly Southwest corner of State Lease No. 17668, having Coordinates of X = 1,974,955.68 and Y = 242,787.21; thence along the boundary of said State Lease No. 17668 the following courses: South 89 degrees 55 minutes 31 seconds East 1,694.32 feet to a point having Coordinates of X = 1,976,650.00 and Y = 242,785.00; North 38 degrees 15 minutes 16 seconds East 1,986.58 feet to a point having Coordinates of X = 1,977,880.00 and Y = 244,345.00; North 18 degrees 05 minutes 11 seconds West 1,819.92 feet to a point having Coordinates of X = 1,977,315.00 and Y = 246,075.00; North 58 degrees 15 minutes 32 seconds West 1,264.06 feet to a point having Coordinates of X = 1,976,240.00 and Y = 246,740.00; and North 43 degrees 56 minutes 29 seconds West 2,490.08 feet to a point, said point also being a point on the Atchafalaya Delta Wildlife Management Area boundary having Coordinates of X = 1,974,512.08 and Y = 248,532.98; thence South 70 degrees 45 minutes 00 seconds East 11,085.58 feet along the boundary of said Atchafalaya Delta Wildlife Management Area boundary to a point on the East line of said Block 16 having Coordinates of X = 1,984,977.84 and Y = 244,878.15; thence South 3,982.73 feet along the East line of said Block 16 to the point of beginning, **LESS AND EXCEPT** any portion of the Atchafalaya Delta Wildlife Management Area that may lie within the above described tract, containing **1,085.48 acres**, all as more particularly outlined on a plat on file in the Office of Mineral Resources, Department of Natural Resources. All bearings, distances and coordinates are based on Louisiana Coordinate System of 1927, (North or South Zone).

NOTE: The above description of the Tract nominated for lease has been provided and corrected, where required, exclusively by the nomination party. Any mineral lease selected from this Tract and awarded by the Louisiana State Mineral Board shall be without warranty of any kind, either express, implied, or statutory, including, but not limited to, the implied warranties of merchantability and fitness for a particular purpose. Should the mineral lease awarded by the Louisiana State Mineral Board be subsequently modified, cancelled or abrogated due to the existence of conflicting leases, operating agreements, private claims or other future obligations or conditions which may affect all or any portion of the leased Tract, it shall not relieve the Lessee of the obligation to

pay any bonus due thereon to the Louisiana State Mineral Board, nor shall the Louisiana State Mineral Board be obligated to refund any consideration paid by the Lessor prior to such modification, cancellation, or abrogation, including, but not limited to, bonuses, rentals and royalties.

NOTE: The above described tract may be in the vicinity of existing shell reefs where drilling and dredging operations must be conducted in strict conformity with the regulations adopted by the Louisiana Department of Wildlife and Fisheries and/or the U.S. Corps of Engineers, U.S. Army.

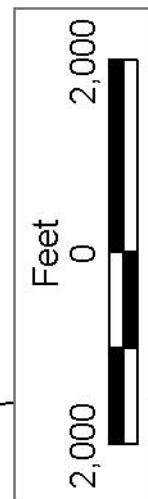
NOTE: The State of Louisiana does hereby reserve, and this lease shall be subject to, the imprescriptible right of surface use in the nature of a servitude in favor of the Department of Natural Resources, including its Offices and Commissions, for the sole purpose of implementing, constructing, servicing and maintaining approved coastal zone management and/or restoration projects. Utilization of any and all rights derived under this lease by the mineral lessee, its agents, successors or assigns, shall not interfere with nor hinder the reasonable surface use by the Department of Natural Resources, its Offices or Commissions, as herein above reserved.

NOTE: It appears, according to our records, that a portion of this Tract is located within the restrictive safety fairway area as set out by the Corps of Engineers, U.S. Army and/or the restrictive anchorage area as set out by the U.S. Coast Guard.

NOTE: The Department of Wildlife and Fisheries has designated certain areas in the coastal waters of the State of Louisiana as Oyster Seed Bed Areas. The exact location of those Seed Bed Areas must be obtained from the Department of Wildlife and Fisheries and any work done under a mineral lease from the State of Louisiana may necessarily be conducted in conformity with the rules and regulations promulgated by the said Department of Wildlife and Fisheries for Oyster Seed Bed Areas.

Applicant: Acadian Land Services, L.L.C.

Bidder	Cash Payment	Price/ Acre	Rental	Oil	Gas	Other



P.O.B.  
X=1,984,977.84  
Y=240,895.42

ST MARY PARISH

EUGENE ISLAND AREA, REVISED

BLOCK EI0016

BLOCK EI0035

SL 17668

SL 17667

**TRACT 37203 - Portion of Block 17, Eugene Island Area, Revised, St. Mary Parish, Louisiana**

The beds and bottoms of all water bodies belonging to the State of Louisiana located in Block 17, Eugene Island Area, Revised, together with any present lands formed by accretion to the shoreline or islands formed therein, located in St. Mary Parish, Louisiana, owned by and not presently under mineral lease as of March 9, 2005, from the State of Louisiana, the geographical area of which is more fully described as follows: Beginning at the Southeast corner of Block 17, Eugene Island Area, Revised, said point also being the Southwest corner of State Lease No. 17667, having Coordinates of X = 1,969,955.68 and Y = 240,895.42; thence West 15,022.16 feet along the South line of said Block 17 to its Southwest corner having Coordinates of X = 1,954,933.52 and Y = 240,895.42; thence North 2,293.38 feet along West line of said Block 17 to the Southeast corner of State Lease No. 14354 having Coordinates of X = 1,954,933.52 and Y = 243,188.80; thence North 955.91 feet along the East line of said State Lease No. 14354 to the Southwest corner of State Lease No. 14492, as amended, having Coordinates of X = 1,954,933.52 and Y = 244,144.71; thence along the boundary of said State Lease No. 14492 the following courses: East 600.00 feet to a point having Coordinates of X = 1,955,533.52 and Y = 244,144.71; North 43 degrees 34 minutes 47 seconds East 700.00 feet to a point having Coordinates of X = 1,956,016.08 and Y = 244,651.80; and North 35 degrees 02 minutes 33 seconds West 1,885.39 feet to a point, said point also being a point on the East Line of said State Lease No. 14354, as amended, having Coordinates of X = 1,954,933.52 and Y = 246,195.42; thence North 1,200.00 feet along the East line of said State Lease No. 14354, as amended, to its Northeast corner, said corner also being the most Easterly Southeast corner of State Lease No. 17121, having Coordinates of X = 1,954,933.52 and Y = 247,395.42; thence North 749.29 feet along the East line of said State Lease No. 17121 to the Southwest corner of State Lease No. 16988 having Coordinates of X = 1,954,933.52 and Y = 248,144.71; thence East 3,550.00 feet along the South line of said State Lease No. 16988 to its most Southerly Southeast corner having Coordinates of X = 1,958,483.52 and Y = 248,144.71; thence East 11,472.16 to a point on the East line of said Block 17 having Coordinates of X = 1,969,955.68 and Y = 248,144.71; thence South 1,249.29 feet along the East line of said Block 17 to the Northwest corner of State Lease No. 17667 having Coordinates of X = 1,969,955.68 and Y = 246,895.42; thence South 6,000.00 feet along the West line of said State Lease No. 17667 to the point of beginning, containing approximately **2,471.03 acres**, all as more particularly outlined on a plat in the Office of Mineral Resources, Department of Natural Resources. All bearings, distances and coordinates are based on Louisiana Coordinate System of 1927, (North or South Zone).

NOTE: The above description of the Tract nominated for lease has been provided and corrected, where required, exclusively by the nomination party. Any mineral lease selected from this Tract and awarded by the Louisiana State Mineral Board shall be without warranty of any kind, either express, implied, or statutory, including, but not limited to, the

implied warranties of merchantability and fitness for a particular purpose. Should the mineral lease awarded by the Louisiana State Mineral Board be subsequently modified, cancelled or abrogated due to the existence of conflicting leases, operating agreements, private claims or other future obligations or conditions which may affect all or any portion of the leased Tract, it shall not relieve the Lessee of the obligation to pay any bonus due thereon to the Louisiana State Mineral Board, nor shall the Louisiana State Mineral Board be obligated to refund any consideration paid by the Lessor prior to such modification, cancellation, or abrogation, including, but not limited to, bonuses, rentals and royalties.

NOTE: The above described tract may be in the vicinity of existing shell reefs where drilling and dredging operations must be conducted in strict conformity with the regulations adopted by the Louisiana Department of Wildlife and Fisheries and/or the U.S. Corps of Engineers, U.S. Army.

NOTE: The State of Louisiana does hereby reserve, and this lease shall be subject to, the imprescriptible right of surface use in the nature of a servitude in favor of the Department of Natural Resources, including its Offices and Commissions, for the sole purpose of implementing, constructing, servicing and maintaining approved coastal zone management and/or restoration projects. Utilization of any and all rights derived under this lease by the mineral lessee, its agents, successors or assigns, shall not interfere with nor hinder the reasonable surface use by the Department of Natural Resources, its Offices or Commissions, as herein above reserved.

NOTE: It appears, according to our records, that a portion of this Tract is located within the restrictive safety fairway area as set out by the Corps of Engineers, U.S. Army and/or the restrictive anchorage area as set out by the U.S. Coast Guard.

NOTE: The Department of Wildlife and Fisheries has designated certain areas in the coastal waters of the State of Louisiana as Oyster Seed Bed Areas. The exact location of those Seed Bed Areas must be obtained from the Department of Wildlife and Fisheries and any work done under a mineral lease from the State of Louisiana may necessarily be conducted in conformity with the rules and regulations promulgated by the said Department of Wildlife and Fisheries for Oyster Seed Bed Areas.

Applicant: Acadian Land Services, L.L.C.

Bidder	Cash Payment	Price/ Acre	Rental	Oil	Gas	Other



ST MARY PARISH

SL 7870

BLOCK EI0017

SL 16988

SL 16985

SL 1536

SL 17121

SL 14354

SL 17668

SL 17667

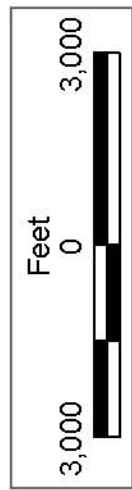
EUGENE ISLAND AREA, REVISED

BLOCK EI0034

P.O.B.  
X=1,969,955.68  
Y=240,895.42

LA

US





**TRACT 37204 - Portion of Block 34, Eugene Island Area, Revised, St. Mary Parish, Louisiana**

The beds and bottoms of all water bodies belonging to the State of Louisiana located in Block 34, Eugene Island Area, Revised, together with any present lands formed by accretion to the shoreline or islands formed therein, located in St. Mary Parish, Louisiana, owned by and not presently under mineral lease as of March 9, 2005, from the State of Louisiana, the geographical area of which is more fully described as follows: Beginning at the Northeast corner of Block 34, Eugene Island Area, Revised, said point also being the Southwest corner of State Lease No. 17667, having Coordinates of X = 1,969,955.68 and Y = 240,895.42; thence South 8,616.22 feet along the East line of said Block 34 to a point on the Three Mile Decree derived from the June 16, 1975 Decree in the United States vs. Louisiana No. 9 Original, having Coordinates of X = 1,969,955.68 and Y = 232,279.20; thence North 66 degrees 21 minutes 24 seconds West 16,398.66 feet along said Three Mile Decree to a point on the West line of said Block 34 having Coordinates of X = 1,954,933.52 and Y = 238,855.73; thence North 2,039.69 feet along the West line of said Block 34 to its Northwest corner having Coordinates of X = 1,954,933.52 and Y = 240,895.42; thence East 15,022.16 feet along the North line of said Block 34 to the point of beginning, containing **1,837.41 acres, LESS AND EXCEPT** that portion thereof, if any, lying seaward of the line three nautical miles from the coast line of Louisiana, as said three mile line has been decreed by the Supreme Court of the United States, as determined by a Special Master appointed therein, in litigation styled **United States v. State of Louisiana et al No. 9 Original**, in 1975, all as more particularly outlined on a plat in the Office of Mineral Resources, Department of Natural Resources. All bearings, distances and coordinates are based on the Louisiana Coordinate System of 1927, (South Zone).

NOTE: The above description of the Tract nominated for lease has been provided and corrected, where required, exclusively by the nomination party. Any mineral lease selected from this Tract and awarded by the Louisiana State Mineral Board shall be without warranty of any kind, either express, implied, or statutory, including, but not limited to, the implied warranties of merchantability and fitness for a particular purpose. Should the mineral lease awarded by the Louisiana State Mineral Board be subsequently modified, cancelled or abrogated due to the existence of conflicting leases, operating agreements, private claims or other future obligations or conditions which may affect all or any portion of the leased Tract, it shall not relieve the Lessee of the obligation to pay any bonus due thereon to the Louisiana State Mineral Board, nor shall the Louisiana State Mineral Board be obligated to refund any consideration paid by the Lessor prior to such modification, cancellation, or abrogation, including, but not limited to, bonuses, rentals and royalties.

NOTE: The above described tract may be in the vicinity of existing shell reefs where drilling and dredging operations must be conducted in strict

conformity with the regulations adopted by the Louisiana Department of Wildlife and Fisheries and/or the U.S. Corps of Engineers, U.S. Army.

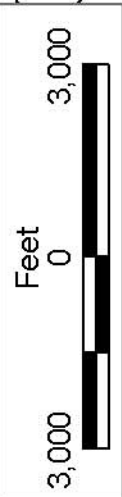
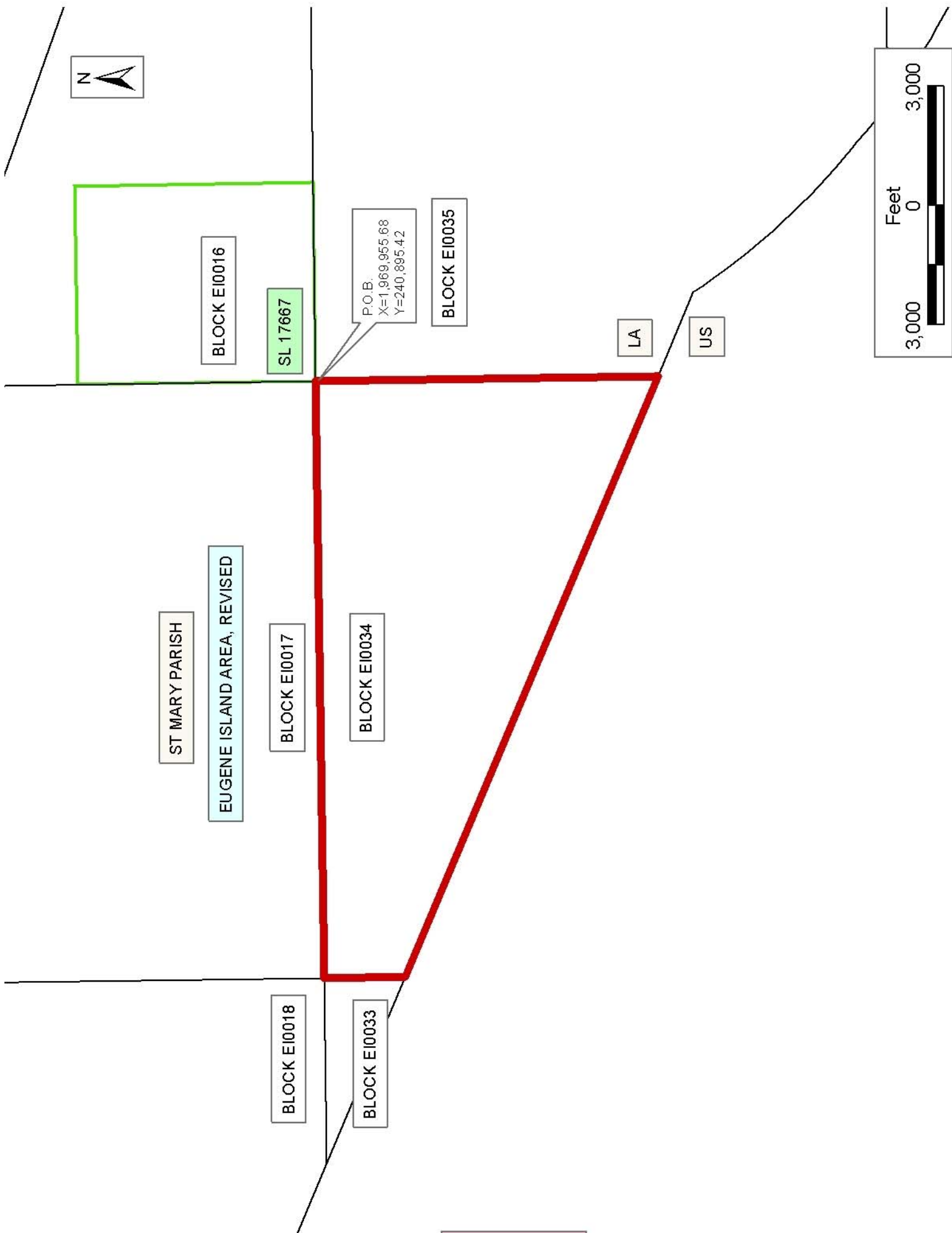
NOTE: The State of Louisiana does hereby reserve, and this lease shall be subject to, the imprescriptible right of surface use in the nature of a servitude in favor of the Department of Natural Resources, including its Offices and Commissions, for the sole purpose of implementing, constructing, servicing and maintaining approved coastal zone management and/or restoration projects. Utilization of any and all rights derived under this lease by the mineral lessee, its agents, successors or assigns, shall not interfere with nor hinder the reasonable surface use by the Department of Natural Resources, its Offices or Commissions, as herein above reserved.

NOTE: It appears, according to our records, that a portion of this Tract is located within the restrictive safety fairway area as set out by the Corps of Engineers, U.S. Army and/or the restrictive anchorage area as set out by the U.S. Coast Guard.

NOTE: The Department of Wildlife and Fisheries has designated certain areas in the coastal waters of the State of Louisiana as Oyster Seed Bed Areas. The exact location of those Seed Bed Areas must be obtained from the Department of Wildlife and Fisheries and any work done under a mineral lease from the State of Louisiana may necessarily be conducted in conformity with the rules and regulations promulgated by the said Department of Wildlife and Fisheries for Oyster Seed Bed Areas.

Applicant: Acadian Land Services, L.L.C.

Bidder	Cash Payment	Price/ Acre	Rental	Oil	Gas	Other



**TRACT 37205 - Portion of Block 35, Eugene Island Area, Revised, St. Mary Parish, Louisiana**

The beds and bottoms of all water bodies belonging to the State of Louisiana located in Block 35, Eugene Island Area, Revised, together with any present lands formed by accretion to the shoreline or islands formed therein, located in St. Mary Parish, Louisiana, owned by and not presently under mineral lease as of March 9, 2005, from the State of Louisiana, the geographical area of which is more fully described as follows: Beginning at the Northwest corner of Block 35, Eugene Island Area Revised, said point also being the Southwest corner of State Lease No. 17667, having Coordinates of X = 1,969,955.68 and Y = 240,895.42; thence East 5,000.00 feet along the South line of said State Lease No. 17667 to its Southeast corner having Coordinates of X = 1,974,955.68 and Y = 240,895.42; thence East 2,511.08 feet along the North line of said Block 35 to a point having Coordinates of X = 1,977,466.76 and Y = 240,895.42; thence South 14,498.58 feet to a point on the South line of said Block 35 having Coordinates of X = 1,977,466.76 and Y = 226,396.84; thence West 721.69 feet along the South line of said Block 35 to a point on the Three Mile Decree derived from the June 16, 1975 United States vs. Louisiana No. 9 Original having Coordinates of X = 1,976,745.07 and Y = 226,396.84; thence along said Three Mile Decree line the following courses: along an arc with a center of X = 1,987,818.00 and Y = 240,892.00 and a radius of 18,240.60 feet to a point having Coordinates of X = 1,975,782.00 and Y = 227,186.00; along an arc with a center of X = 1,984,371.00 and Y = 241,272.00 and a radius of 18,240.60 feet to a point having Coordinates of X = 1,972,054.00 and Y = 231,367.00; and North 66 degrees 30 minutes 15 seconds West 2,288.02 feet to a point on the West line of said Block 35 having Coordinates of X = 1,969,955.68 and Y = 232,279.00; thence North 8,616.22 feet along the West line of said Block 35 to the point of beginning, containing **2,002.21 acres, LESS AND EXCEPT** that portion thereof, if any, lying seaward of the line three nautical miles from the coast line of Louisiana, as said three mile line has been decreed by the Supreme Court of the United States, as determined by a Special Master appointed therein, in litigation styled **United States v. State of Louisiana et al No. 9 Original**, in 1975, all as more particularly outlined on a plat in the Office of Mineral Resources, Department of Natural Resources. All bearings, distances and coordinates are based on the Louisiana Coordinate System of 1927, (South Zone).

NOTE: The above description of the Tract nominated for lease has been provided and corrected, where required, exclusively by the nomination party. Any mineral lease selected from this Tract and awarded by the Louisiana State Mineral Board shall be without warranty of any kind, either express, implied, or statutory, including, but not limited to, the implied warranties of merchantability and fitness for a particular purpose. Should the mineral lease awarded by the Louisiana State Mineral Board be subsequently modified, cancelled or abrogated due to the existence of conflicting leases, operating agreements, private claims or other future obligations or conditions which may affect all or any portion of the leased Tract, it shall not relieve the Lessee of the obligation to

pay any bonus due thereon to the Louisiana State Mineral Board, nor shall the Louisiana State Mineral Board be obligated to refund any consideration paid by the Lessor prior to such modification, cancellation, or abrogation, including, but not limited to, bonuses, rentals and royalties.

NOTE: The above described tract may be in the vicinity of existing shell reefs where drilling and dredging operations must be conducted in strict conformity with the regulations adopted by the Louisiana Department of Wildlife and Fisheries and/or the U.S. Corps of Engineers, U.S. Army.

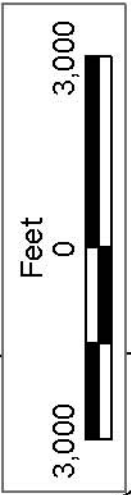
NOTE: The State of Louisiana does hereby reserve, and this lease shall be subject to, the imprescriptible right of surface use in the nature of a servitude in favor of the Department of Natural Resources, including its Offices and Commissions, for the sole purpose of implementing, constructing, servicing and maintaining approved coastal zone management and/or restoration projects. Utilization of any and all rights derived under this lease by the mineral lessee, its agents, successors or assigns, shall not interfere with nor hinder the reasonable surface use by the Department of Natural Resources, its Offices or Commissions, as herein above reserved.

NOTE: It appears, according to our records, that a portion of this Tract is located within the restrictive safety fairway area as set out by the Corps of Engineers, U.S. Army and/or the restrictive anchorage area as set out by the U.S. Coast Guard.

NOTE: The Department of Wildlife and Fisheries has designated certain areas in the coastal waters of the State of Louisiana as Oyster Seed Bed Areas. The exact location of those Seed Bed Areas must be obtained from the Department of Wildlife and Fisheries and any work done under a mineral lease from the State of Louisiana may necessarily be conducted in conformity with the rules and regulations promulgated by the said Department of Wildlife and Fisheries for Oyster Seed Bed Areas.

Applicant: Acadian Land Services, L.L.C.

Bidder	Cash Payment	Price/ Acre	Rental	Oil	Gas	Other



BLOCK EI0016

ST MARY PARISH

EUGENE ISLAND AREA,  
REVISED

BLOCK EI0035

SL 17667

LA

US

BLOCK EI0017

P.O.B.  
X=1,969,955.68  
Y=240,895.42

BLOCK EI0034

**TRACT 37206 - Portion of Block 71, Main Pass Area, Revised, Plaquemines Parish, Louisiana**

The beds and bottoms of all water bodies belonging to the State of Louisiana located in Block 71, Main Pass Area, Revised, together with any present lands formed by accretion to the shoreline or islands formed therein, located in Plaquemines Parish, Louisiana, owned by and not presently under mineral lease as of March 9, 2005, from the State of Louisiana, the geographical area of which is more fully described as follows: Beginning at the Southeast corner of Block 71, Main Pass Area, Revised having Coordinates of X = 2,761,780.00 and Y = 214,972.00; thence West 10,535.00 feet along the South line of said Block 71 to its Southwest corner having Coordinates of X = 2,751,245.00 and Y = 214,972.00; thence North 9,797.16 feet along the West line of said Block 71 to a point having Coordinates of X = 2,751,245.00 and Y = 224,769.16; thence Southeasterly on an arc having a radius of 18,240.60 feet and a center at X = 2,750,755 and Y = 206,535 to a point having Coordinates of X = 2,759,837 and Y = 222,354; thence Southeasterly on an arc having a radius of 18,240.60 feet and a center at X = 2,755,325 and Y = 204,680 to a point having Coordinates of X = 2,761,780.00 and Y = 221,740.52; thence South 6,768.52 feet along the East line of said Block 71 to the point of beginning, containing approximately **2,086.67 acres, LESS AND EXCEPT** that portion thereof, if any, lying seaward of the line three nautical miles from the coast line of Louisiana, as said three mile line has been decreed by the Supreme Court of the United States, as determined by a Special Master appointed therein, in litigation styled **United States v. State of Louisiana et al No. 9 Original**, in 1975, all as more particularly outlined on a plat in the Office of Mineral Resources, Department of Natural Resources. All bearings, distances and coordinates are based on the Louisiana Coordinate System of 1927, (South Zone).

NOTE: The above description of the Tract nominated for lease has been provided and corrected, where required, exclusively by the nomination party. Any mineral lease selected from this Tract and awarded by the Louisiana State Mineral Board shall be without warranty of any kind, either express, implied, or statutory, including, but not limited to, the implied warranties of merchantability and fitness for a particular purpose. Should the mineral lease awarded by the Louisiana State Mineral Board be subsequently modified, cancelled or abrogated due to the existence of conflicting leases, operating agreements, private claims or other future obligations or conditions which may affect all or any portion of the leased Tract, it shall not relieve the Lessee of the obligation to pay any bonus due thereon to the Louisiana State Mineral Board, nor shall the Louisiana State Mineral Board be obligated to refund any consideration paid by the Lessor prior to such modification, cancellation, or abrogation, including, but not limited to, bonuses, rentals and royalties.

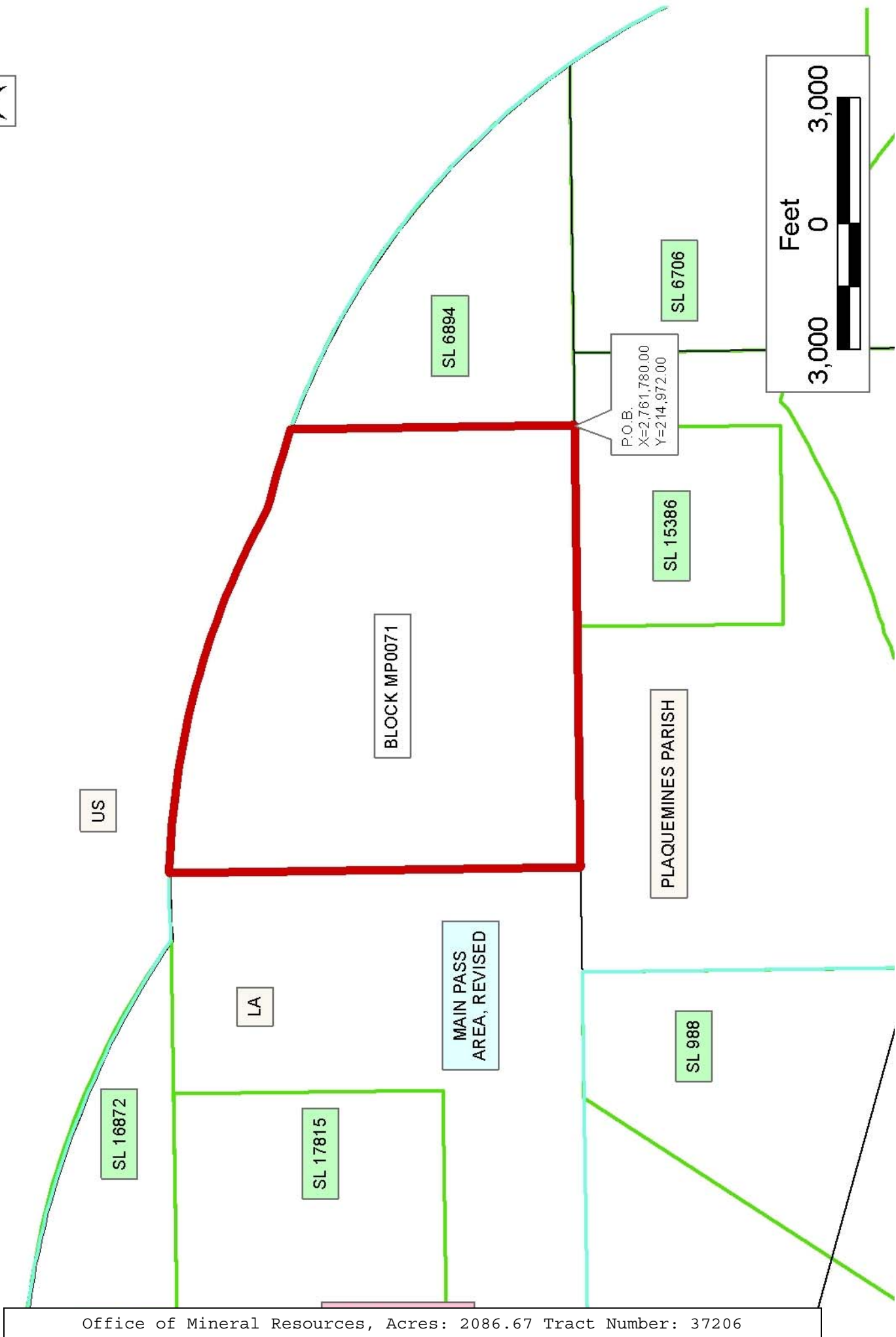
NOTE: The State of Louisiana does hereby reserve, and this lease shall be subject to, the imprescriptible right of surface use in the nature of a servitude in favor of the Department of Natural Resources, including its

Offices and Commissions, for the sole purpose of implementing, constructing, servicing and maintaining approved coastal zone management and/or restoration projects. Utilization of any and all rights derived under this lease by the mineral lessee, its agents, successors or assigns, shall not interfere with nor hinder the reasonable surface use by the Department of Natural Resources, its Offices or Commissions, as herein above reserved.

Applicant: Lamar Oil & Gas, Inc.

Bidder	Cash Payment	Price/ Acre	Rental	Oil	Gas	Other





**TRACT 37207 - Portion of Block 75, Main Pass Area, Revised, Plaquemines Parish, Louisiana**

The beds and bottoms of all water bodies belonging to the State of Louisiana located in Block 75, Main Pass Area, Revised, together with any present lands formed by accretion to the shoreline or islands formed therein, located in Plaquemines Parish, Louisiana, owned by and not presently under mineral lease as of March 9, 2005, from the State of Louisiana, the geographical area of which is more fully described as follows: Beginning at a point on the North line of Block 75, Main Pass Area, Revised, having Coordinates of X = 2,751,245.00 and Y = 214,972.00; thence East 5734.00 feet on the North line of said Block 75 to the Northwest corner of State Lease No. 15386 having Coordinates of X = 2,756,979.00 and Y = 214,972.00; thence along the boundaries of said State Lease No. 15386 the following: South 4901.67 feet, East 4729.00 feet and North 4901.67 feet to its Northeast corner located on the North line of said Block 75, having Coordinates of X = 2,761,708.00 and Y = 214,972.00; thence East 1800.00 feet on the North line of said Block 75 to its Northeast corner having Coordinates of X = 2,763,508.00 and Y = 214,972.00; thence South 5302.29 feet along the East line of said Block 75 to the Northeast corner of State Lease No. 8690, as amended, having Coordinates of X = 2,763,508.00 and Y = 209,669.71; thence along the Northern and Western boundaries of said State Lease No. 8690 the following; North 71 degrees 45 minutes 32 seconds West 1279.88 feet, South 46 degrees 53 minutes 26 seconds West 252.08 feet, South 60 degrees 44 minutes 06 seconds West 1025.74 feet, South 66 degrees 15 minutes 38 seconds West 267.35 feet, South 63 degrees 03 minutes 37 seconds West 1210.89 feet, South 69 degrees 59 minutes 10 seconds West 2426.80 feet, South 75 degrees 47 minutes 13 seconds West 514.48 feet, South 64 degrees 13 minutes 34 seconds West 179.73 feet, South 78 degrees 11 minutes 39 seconds West 225.47 feet, South 65 degrees 37 minutes 50 seconds West 361.86 feet, South 76 degrees 11 minutes 38 seconds West 277.24 feet to a point having Coordinates of X = 2,756,129.00 and Y = 207,443.76, Southeasterly on a curve with a radius of 1175.00 feet and a center at X = 2,757,285.96 and Y = 207,648.85 to a point having Coordinates of X = 2,756,278.00 and Y = 207,045.00, South 34 degrees 51 minutes 16 seconds East 1023.63 feet, South 30 degrees 25 minutes 12 seconds East 1337.06 feet to a point having Coordinates of X = 2,757,540.00 and Y = 205,052.00, Southeasterly on a curve with a radius of 7595.00 feet and a center at X = 2,751,097.27 and Y = 201,030.16 to a point having Coordinates of X = 2,758,610.00 and Y = 202,145.00, Southeasterly on a curve with a radius of 6420.00 feet and a center at X = 2,765,011.96 and Y = 202,625.94 to a point having Coordinates of X = 2,758,920.00 and Y = 200,600.00, Southeasterly on a curve with a radius of 15,264.00 feet and a center at X = 2,772,565.59 and Y = 207,440.14 to its Southwest corner located on the South line of said Block 75, having Coordinates of X = 2,759,120.42 and Y = 200,214.00; thence West 4172.12 feet on the South line of said Block 75 to a point having Coordinates of X = 2,754,948.30 and Y = 200,214.00; thence Northerly on a straight line to a point having Coordinates of X = 2,755,178 and Y = 203,815; thence Northerly on a straight line to a point

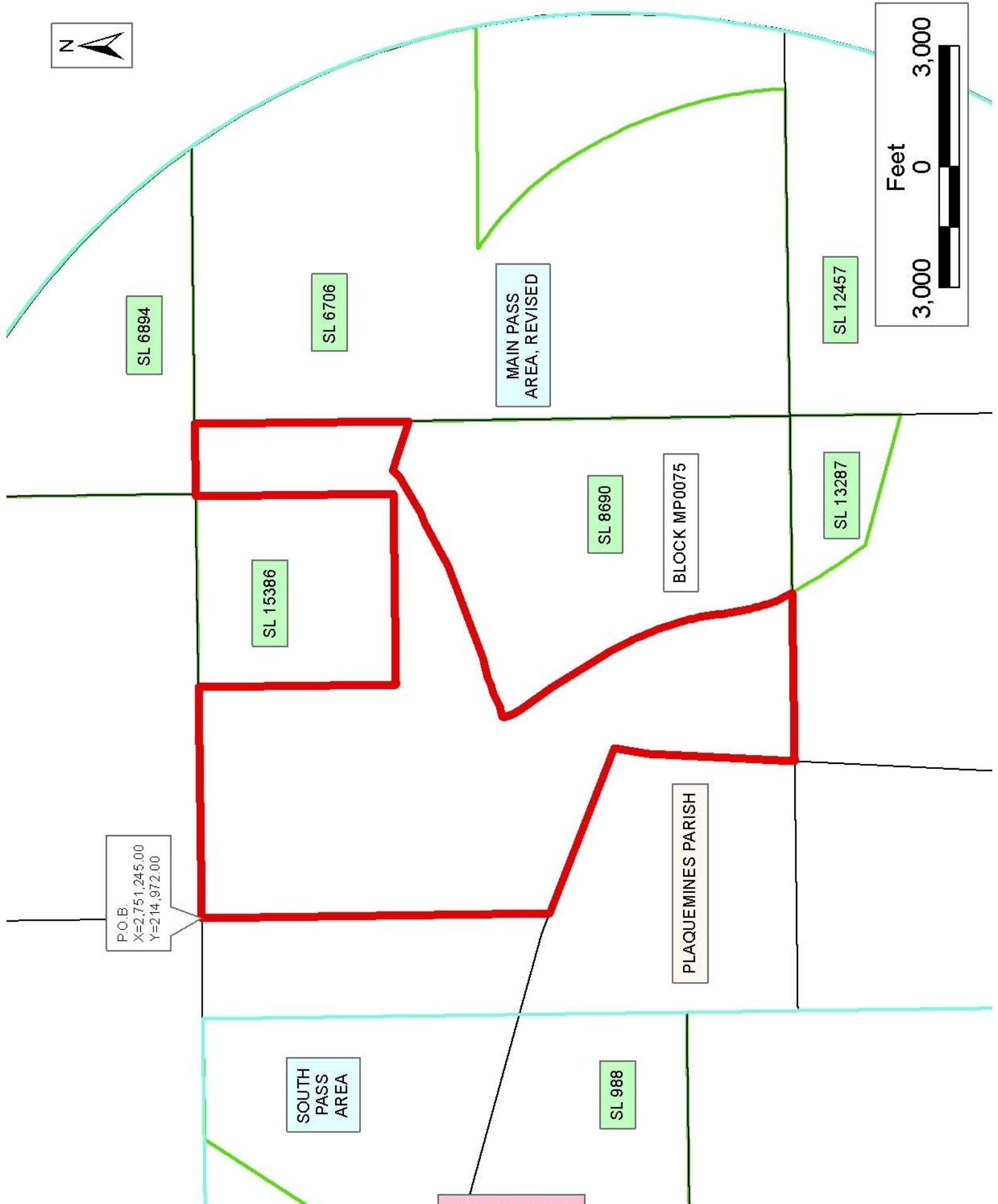
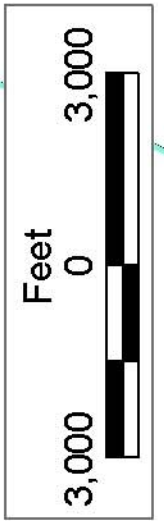
having Coordinates of X = 2,755,325 and Y = 204,680; thence Northwesterly on a straight line to a point having Coordinates of X = 2,751,245.00 and Y = 206,336.11; thence North 8635.89 feet to the point of beginning, containing approximately **1990.25 acres**, all as more particularly outlined on a plat on file in the Office of Mineral Resources, Department of Natural Resources. All bearings, distances and coordinates are based on Louisiana Coordinate System of 1927, (North or South Zone).

NOTE: The above description of the Tract nominated for lease has been provided and corrected, where required, exclusively by the nomination party. Any mineral lease selected from this Tract and awarded by the Louisiana State Mineral Board shall be without warranty of any kind, either express, implied, or statutory, including, but not limited to, the implied warranties of merchantability and fitness for a particular purpose. Should the mineral lease awarded by the Louisiana State Mineral Board be subsequently modified, cancelled or abrogated due to the existence of conflicting leases, operating agreements, private claims or other future obligations or conditions which may affect all or any portion of the leased Tract, it shall not relieve the Lessee of the obligation to pay any bonus due thereon to the Louisiana State Mineral Board, nor shall the Louisiana State Mineral Board be obligated to refund any consideration paid by the Lessor prior to such modification, cancellation, or abrogation, including, but not limited to, bonuses, rentals and royalties.

NOTE: The State of Louisiana does hereby reserve, and this lease shall be subject to, the imprescriptible right of surface use in the nature of a servitude in favor of the Department of Natural Resources, including its Offices and Commissions, for the sole purpose of implementing, constructing, servicing and maintaining approved coastal zone management and/or restoration projects. Utilization of any and all rights derived under this lease by the mineral lessee, its agents, successors or assigns, shall not interfere with nor hinder the reasonable surface use by the Department of Natural Resources, its Offices or Commissions, as herein above reserved.

Applicant: Lamar Oil & Gas, Inc.

Bidder	Cash Payment	Price/ Acre	Rental	Oil	Gas	Other



P.O.B.  
X=2,751,245.00  
Y=2,14,972.00

SOUTH  
PASS  
AREA

MAIN PASS  
AREA, REVISED

BLOCK MP0075

PLAQUEMINES PARISH

SL 6894

SL 6706

SL 12457

SL 15386

SL 8690

SL 13287

SL 988