

TRACT 37189 - Portion of Block 23, Breton Sound Area, Plaquemines Parish, Louisiana

The beds and bottoms of all water bodies belonging to the State of Louisiana located in Block 23, Breton Sound Area, together with any present lands formed by accretion to the shoreline or islands formed therein, located in Plaquemines Parish, Louisiana, owned by and not presently under mineral lease as of March 9, 2005, from the State of Louisiana, the geographical area of which is more fully described as follows: Beginning at a point on East boundary of Block 23, Breton Sound Area, also being the Northeast corner of State Lease No. 18028 having Coordinates of X = 2,738,600.00 and Y = 339,580.00; thence South 67 degrees 42 minutes 52 seconds West 6,592.42 feet along the North boundary of said State Lease No. 18028 to its most Westerly corner on the South boundary of said Block 23 having Coordinates of X = 2,732,500.00 and Y = 337,080.00; thence West 2,596.17 feet along the said South boundary of said Block 23 to a point on the Coastline as defined by the report of the Special Master and set forth in the judgment decree in June of 1975 by the Supreme Court of the United States in the litigation styled United States v. State of Louisiana, et al No.9 Original, having Coordinates of X = 2,729,903.83 and Y = 337,080.00; thence Northeasterly on a straight line along the said Coastline to the Southwest corner of State Lease No. 16258, as amended, having Coordinates of X = 2,734,086.12 and Y = 342,580.00; thence along the Southern, Eastern and Northern boundaries of said State Lease No. 16258, the following courses: North 78 degrees 00 minutes 15 seconds East 2,161.08 feet to its Southeast corner having Coordinates of X = 2,736,200.00 and Y = 343,029.16; thence North 1,200.84 feet to its Northeast corner having Coordinates of X = 2,736,200.00 and Y = 344,230.00; thence North 70 degrees 40 minutes 53 seconds West 718.84 feet to its Northwest corner on the said Coastline having Coordinates of X = 2,735,521.63 and Y = 344,467.81; thence Northeasterly on a straight line along the said Coastline to a point on the East boundary of said Block 23 having Coordinates of X = 2,738,600.00 and Y = 348,516.07; thence South 8,936.07 feet along the said East boundary of said Block 23 to the point of beginning, containing approximately **918.73 acres**, all as more particularly outlined on a plat on file in the Office of Mineral Resources, Department of Natural Resources. All bearings, distances and coordinates are based on Louisiana Coordinate System of 1927, (North or South Zone).

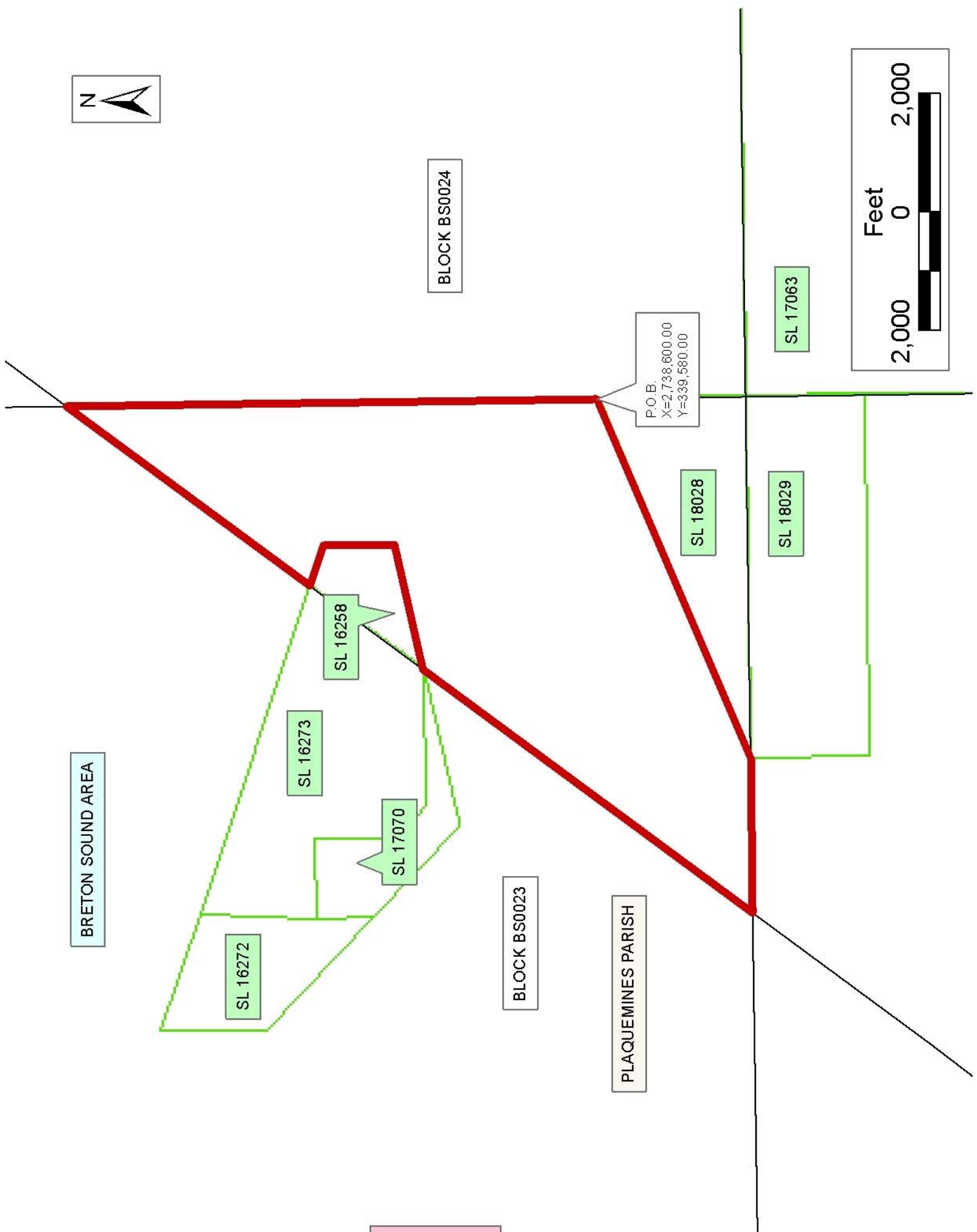
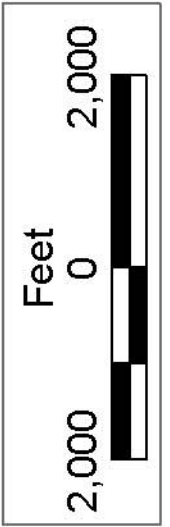
NOTE: The above description of the Tract nominated for lease has been provided and corrected, where required, exclusively by the nomination party. Any mineral lease selected from this Tract and awarded by the Louisiana State Mineral Board shall be without warranty of any kind, either express, implied, or statutory, including, but not limited to, the implied warranties of merchantability and fitness for a particular purpose. Should the mineral lease awarded by the Louisiana State Mineral Board be subsequently modified, cancelled or abrogated due to the existence of conflicting leases, operating agreements, private claims or other future obligations or conditions which may affect all or any portion

of the leased Tract, it shall not relieve the Lessee of the obligation to pay any bonus due thereon to the Louisiana State Mineral Board, nor shall the Louisiana State Mineral Board be obligated to refund any consideration paid by the Lessor prior to such modification, cancellation, or abrogation, including, but not limited to, bonuses, rentals and royalties.

NOTE: The State of Louisiana does hereby reserve, and this lease shall be subject to, the imprescriptible right of surface use in the nature of a servitude in favor of the Department of Natural Resources, including its Offices and Commissions, for the sole purpose of implementing, constructing, servicing and maintaining approved coastal zone management and/or restoration projects. Utilization of any and all rights derived under this lease by the mineral lessee, its agents, successors or assigns, shall not interfere with nor hinder the reasonable surface use by the Department of Natural Resources, its Offices or Commissions, as herein above reserved.

Applicant: Oil And Gas Interests, Inc.

Bidder	Cash Payment	Price/ Acre	Rental	Oil	Gas	Other



P.O.B.
X=2,738,600.00
Y=339,580.00

BRETON SOUND AREA

BLOCK BS0024

BLOCK BS0023

PLAQUEMINES PARISH

SL 16272

SL 16273

SL 16258

SL 17070

SL 18028

SL 18029

SL 17063

TRACT 37190 - Portion of Block 26, Breton Sound Area, Plaquemines Parish, Louisiana

The beds and bottoms of all water bodies belonging to the State of Louisiana located in Block 26, Breton Sound Area, together with any present lands formed by accretion to the shoreline or islands formed therein, located in Plaquemines Parish, Louisiana, owned by and not presently under mineral lease as of March 9, 2005, from the State of Louisiana, the geographical area of which is more fully described as follows: Beginning at a point on the East boundary of Block 26, Breton Sound Area, having Coordinates of X = 2,738,600.00 and Y = 329,705.00; thence West 14,750.00 feet to a point on the West boundary of said Block 26 having Coordinates of X = 2,723,850.00 and Y = 329,705.00; thence North 1,034.83 feet along the said West boundary of said Block 26 to a point on the Coastline as defined by the report of the Special Master and set forth in the judgment decree in June of 1975 by the Supreme Court of the United States in the litigation styled United States v. State of Louisiana, et al No.9 Original, having Coordinates of X = 2,723,850.00 and Y = 330,739.83; thence along the said Coastline the following courses: Northeasterly on a straight line to a point having Coordinates of X = 2,723,975 and Y = 330,868; Northeasterly on a straight line to a point having Coordinates of X = 2,726,852 and Y = 333,103; Northeasterly on a straight line to a point having Coordinates of X = 2,727,653 and Y = 334,120 and Northeasterly on a straight line to a point on the North boundary of said Block 26 having Coordinates of X = 2,729,903.83 and Y = 337,080.00; thence East 2,596.17 feet along the said North boundary of said Block 26 to the Northwest corner of State Lease No. 18029 having Coordinates of X = 2,732,500.00 and Y = 337,080.00; thence South 2,000.00 feet along the West boundary of said State Lease No. 18029 to its Southwest corner having Coordinates of X = 2,732,500.00 and Y = 335,080.00; thence East 6,100.00 feet along the South boundary of said State Lease No. 18029 to its Southeast corner on the East boundary of said Block 26 having Coordinates of X = 2,738,600.00 and Y = 335,080.00; thence South 5,375.00 feet along the said East boundary of said Block 26 to the point of beginning, containing approximately **1,722.46 acres**, all as more particularly outlined on a plat on file in the Office of Mineral Resources, Department of Natural Resources. All bearings, distances and coordinates are based on Louisiana Coordinate System of 1927, (North or South Zone).

NOTE: The above description of the Tract nominated for lease has been provided and corrected, where required, exclusively by the nomination party. Any mineral lease selected from this Tract and awarded by the Louisiana State Mineral Board shall be without warranty of any kind, either express, implied, or statutory, including, but not limited to, the implied warranties of merchantability and fitness for a particular purpose. Should the mineral lease awarded by the Louisiana State Mineral Board be subsequently modified, cancelled or abrogated due to the existence of conflicting leases, operating agreements, private claims or other future obligations or conditions which may affect all or any portion of the leased Tract, it shall not relieve the Lessee of the obligation to

pay any bonus due thereon to the Louisiana State Mineral Board, nor shall the Louisiana State Mineral Board be obligated to refund any consideration paid by the Lessor prior to such modification, cancellation, or abrogation, including, but not limited to, bonuses, rentals and royalties.

NOTE: The State of Louisiana does hereby reserve, and this lease shall be subject to, the imprescriptible right of surface use in the nature of a servitude in favor of the Department of Natural Resources, including its Offices and Commissions, for the sole purpose of implementing, constructing, servicing and maintaining approved coastal zone management and/or restoration projects. Utilization of any and all rights derived under this lease by the mineral lessee, its agents, successors or assigns, shall not interfere with nor hinder the reasonable surface use by the Department of Natural Resources, its Offices or Commissions, as herein above reserved.

Applicant: Oil And Gas Interests, Inc.

Bidder	Cash Payment	Price/ Acre	Rental	Oil	Gas	Other



PLAQUEMINES PARISH

BLOCK BS0023

SL 18028

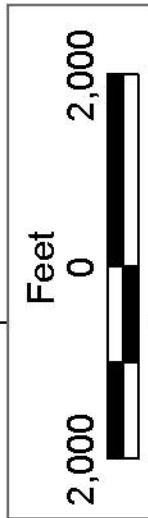
SL 18029

SL 17063

BRETON SOUND AREA

BLOCK BS0026

P.O.B.
X=2,738,600.00
Y=329,705.00



TRACT 37191 - Portion of Block 27, Breton Sound Area, Plaquemines Parish, Louisiana

The beds and bottoms of all water bodies belonging to the State of Louisiana located in Block 27, Breton Sound Area, together with any present lands formed by accretion to the shoreline or islands formed therein, located in Plaquemines Parish, Louisiana, owned by and not presently under mineral lease as of March 9, 2005, from the State of Louisiana, the geographical area of which is more fully described as follows: Beginning at a point being the Southeast corner of Block 27, Breton Sound Area, having Coordinates of X = 2,723,850.00 and Y = 322,330.00; thence West 5,840.02 feet on the South line of said Block 27 to a point on the Coastline derived from the June 16, 1975 Decree in the United States vs. Louisiana No.9 Original having Coordinates of X = 2,718,009.98 and Y = 322,330.00; thence along said Coastline the following courses: North 31 degrees 07 minutes 15 seconds East 5,196.95 feet to a point having Coordinates of X = 2,720,696 and Y = 326,779, North 34 degrees 10 minutes 44 seconds East 2,892.59 feet to a point having Coordinates of X = 2,722,321 and Y = 329,172 and North 44 degrees 16 minutes 54 seconds East 2,189.96 feet to a point on the East line of said Block 27 having Coordinates of X = 2,723,850.00 and Y = 330,739.83; thence South 8,409.83 feet on the East line of said Block 27 to the point of beginning, containing approximately **615.45 acres**, all as more particularly outlined on a plat on file in the Office of Mineral Resources, Department of Natural Resources. All bearings, distances and coordinates are based on Louisiana Coordinate System of 1927, (North or South Zone).

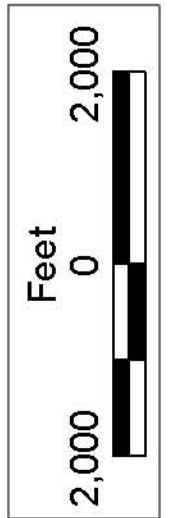
NOTE: The above description of the Tract nominated for lease has been provided and corrected, where required, exclusively by the nomination party. Any mineral lease selected from this Tract and awarded by the Louisiana State Mineral Board shall be without warranty of any kind, either express, implied, or statutory, including, but not limited to, the implied warranties of merchantability and fitness for a particular purpose. Should the mineral lease awarded by the Louisiana State Mineral Board be subsequently modified, cancelled or abrogated due to the existence of conflicting leases, operating agreements, private claims or other future obligations or conditions which may affect all or any portion of the leased Tract, it shall not relieve the Lessee of the obligation to pay any bonus due thereon to the Louisiana State Mineral Board, nor shall the Louisiana State Mineral Board be obligated to refund any consideration paid by the Lessor prior to such modification, cancellation, or abrogation, including, but not limited to, bonuses, rentals and royalties.

NOTE: The State of Louisiana does hereby reserve, and this lease shall be subject to, the imprescriptible right of surface use in the nature of a servitude in favor of the Department of Natural Resources, including its Offices and Commissions, for the sole purpose of implementing, constructing, servicing and maintaining approved coastal zone management and/or restoration projects. Utilization of any and all rights derived under this lease by the mineral lessee, its agents, successors or assigns,

shall not interfere with nor hinder the reasonable surface use by the Department of Natural Resources, its Offices or Commissions, as herein above reserved.

Applicant: Oil And Gas Interests, Inc.

Bidder	Cash Payment	Price/ Acre	Rental	Oil	Gas	Other



PLAQUEMINES PARISH

BLOCK BS0026

P.O.B.
X=2,723,850.00
Y=322,330.00

BRETON SOUND AREA

BLOCK BS0027

SL 15958

SL 4574

TRACT 37192 - Portion of Block 26, Breton Sound Area, Plaquemines Parish, Louisiana

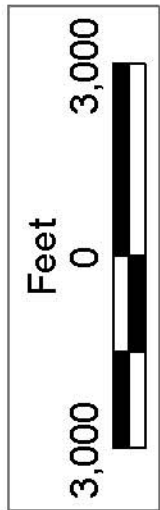
The beds and bottoms of all water bodies belonging to the State of Louisiana located in Block 26, Breton Sound Area, together with any present lands formed by accretion to the shoreline or islands formed therein, located in Plaquemines Parish, Louisiana, owned by and not presently under mineral lease as of March 9, 2005, from the State of Louisiana, the geographical area of which is more fully described as follows: Beginning at a point being the Southwest corner of Block 26, Breton Sound Area, having Coordinates of X = 2,723,850.00 and Y = 322,330.00; thence North 7,375.00 feet on the West line of said Block 26 to a point on the West line of said Block 26 having Coordinates of X = 2,723,850.00 and Y = 329,705.00; thence East 14,750.00 feet to a point on the East line of said Block 26 having Coordinates of X = 2,738,600.00 and Y = 329,705.00; thence South 7,375.00 feet to the Southeast corner of said Block 26 having Coordinates of X = 2,738,600.00 and Y = 322,330.00; thence West 14,750.00 feet along the South line of said Block 26 to the point of beginning, containing approximately **2,497.27 acres**, all as more particularly outlined on a plat on file in the Office of Mineral Resources, Department of Natural Resources. All bearings, distances and coordinates are based on Louisiana Coordinate System of 1927, (North or South Zone).

NOTE: The above description of the Tract nominated for lease has been provided and corrected, where required, exclusively by the nomination party. Any mineral lease selected from this Tract and awarded by the Louisiana State Mineral Board shall be without warranty of any kind, either express, implied, or statutory, including, but not limited to, the implied warranties of merchantability and fitness for a particular purpose. Should the mineral lease awarded by the Louisiana State Mineral Board be subsequently modified, cancelled or abrogated due to the existence of conflicting leases, operating agreements, private claims or other future obligations or conditions which may affect all or any portion of the leased Tract, it shall not relieve the Lessee of the obligation to pay any bonus due thereon to the Louisiana State Mineral Board, nor shall the Louisiana State Mineral Board be obligated to refund any consideration paid by the Lessor prior to such modification, cancellation, or abrogation, including, but not limited to, bonuses, rentals and royalties.

NOTE: The State of Louisiana does hereby reserve, and this lease shall be subject to, the imprescriptible right of surface use in the nature of a servitude in favor of the Department of Natural Resources, including its Offices and Commissions, for the sole purpose of implementing, constructing, servicing and maintaining approved coastal zone management and/or restoration projects. Utilization of any and all rights derived under this lease by the mineral lessee, its agents, successors or assigns, shall not interfere with nor hinder the reasonable surface use by the Department of Natural Resources, its Offices or Commissions, as herein above reserved.

Applicant: Oil And Gas Interests, Inc.

Bidder	Cash Payment	Price/ Acre	Rental	Oil	Gas	Other



SL 18029

SL 17063

PLAQUEMINES PARISH

BLOCK BS0026

LA

US

BRETON SOUND AREA

BLOCK BS0039

P.O.B.
X=2,723,850.00
Y=322,330.00

TRACT 37193 - Portion of Block 25, Breton Sound Area, Plaquemines Parish, Louisiana

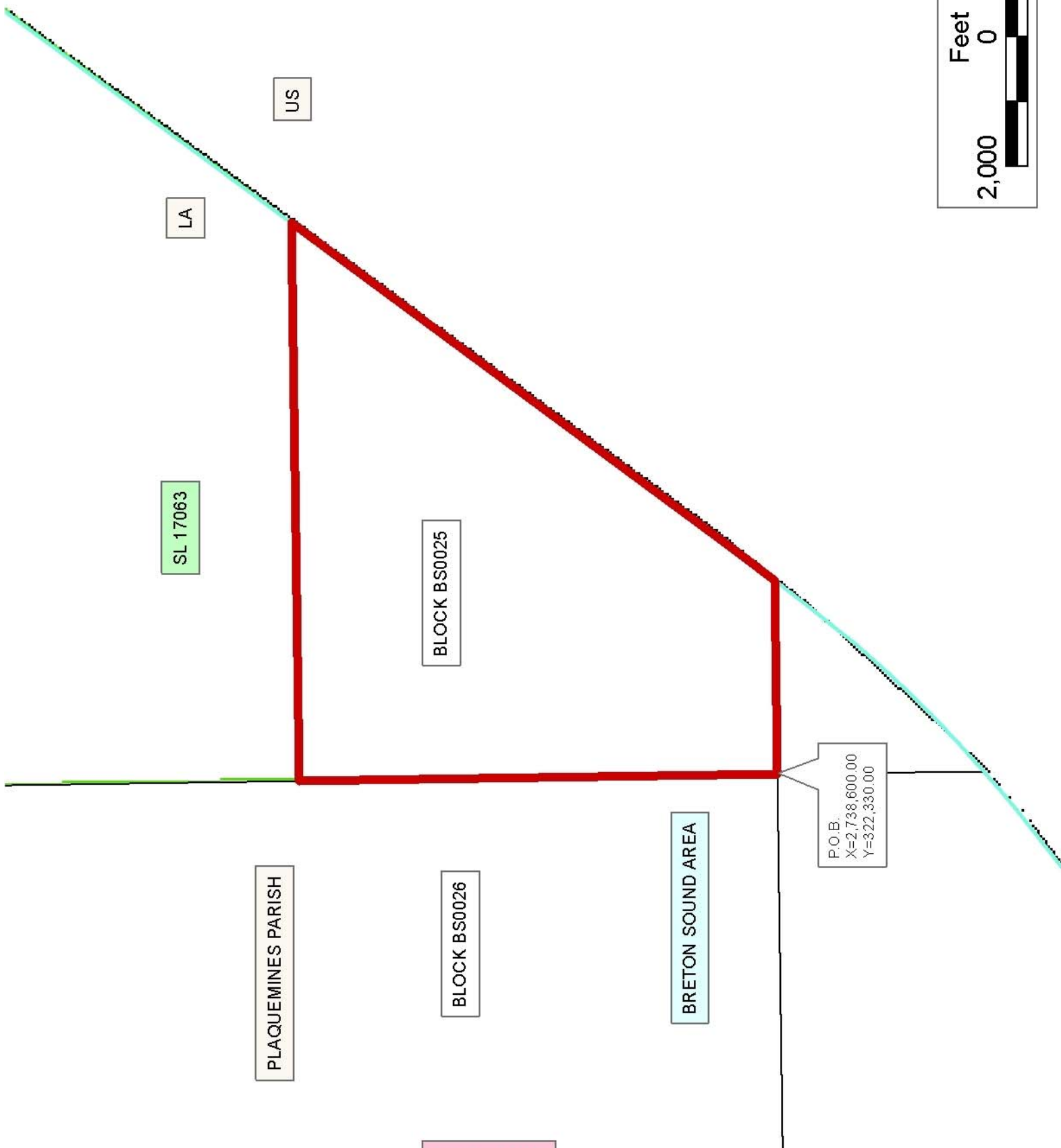
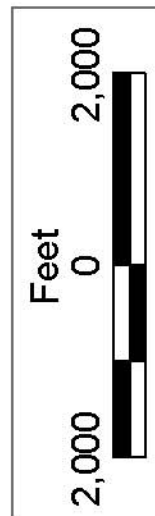
The beds and bottoms of all water bodies belonging to the State of Louisiana located in Block 25, Breton Sound Area, together with any present lands formed by accretion to the shoreline or islands formed therein, located in Plaquemines Parish, Louisiana, owned by and not presently under mineral lease as of March 9, 2005, from the State of Louisiana, the geographical area of which is more fully described as follows: Beginning at the Southwest corner of Block 25, Breton Sound Area, having Coordinates of X = 2,738,600.00 and Y = 322,330.00; thence North 7,375.00 feet on the West line of said Block 25 to the Southwest corner of State Lease No. 17063 having Coordinates of X = 2,738,600.00 and Y = 329,705.00; thence East 8,611.25 feet on the South line of said State Lease No. 17063 to its Southeast corner having Coordinates of X = 2,747,211.25 and Y = 329,705.00; thence Southwesterly on a straight line to a point having Coordinates of X = 2,742,173 and Y = 323,079; thence Southwesterly on an arc having a radius of 18,240.60 feet and a center at X = 2,727,653 and Y = 334,120 to a point having Coordinates of X = 2,741,983 and Y = 322,834; thence Southwesterly on a straight line to a point on the South line of said Block 25 having Coordinates of X = 2,741,586.04 and Y = 322,330.00; thence West 2,986.04 feet on the South line of said Block 25 to the point of beginning, containing approximately **983.10 acres, LESS AND EXCEPT** that portion thereof, if any, lying seaward of the line three nautical miles from the coast line of Louisiana, as said three mile line has been decreed by the Supreme Court of the United States, as determined by a Special Master appointed therein, in litigation styled **United States v. State of Louisiana et al No. 9 Original**, in 1975, all as more particularly outlined on a plat in the Office of Mineral Resources, Department of Natural Resources. All bearings, distances and coordinates are based on the Louisiana Coordinate System of 1927, (South Zone).

NOTE: The above description of the Tract nominated for lease has been provided and corrected, where required, exclusively by the nomination party. Any mineral lease selected from this Tract and awarded by the Louisiana State Mineral Board shall be without warranty of any kind, either express, implied, or statutory, including, but not limited to, the implied warranties of merchantability and fitness for a particular purpose. Should the mineral lease awarded by the Louisiana State Mineral Board be subsequently modified, cancelled or abrogated due to the existence of conflicting leases, operating agreements, private claims or other future obligations or conditions which may affect all or any portion of the leased Tract, it shall not relieve the Lessee of the obligation to pay any bonus due thereon to the Louisiana State Mineral Board, nor shall the Louisiana State Mineral Board be obligated to refund any consideration paid by the Lessor prior to such modification, cancellation, or abrogation, including, but not limited to, bonuses, rentals and royalties.

NOTE: The State of Louisiana does hereby reserve, and this lease shall be subject to, the imprescriptible right of surface use in the nature of a servitude in favor of the Department of Natural Resources, including its Offices and Commissions, for the sole purpose of implementing, constructing, servicing and maintaining approved coastal zone management and/or restoration projects. Utilization of any and all rights derived under this lease by the mineral lessee, its agents, successors or assigns, shall not interfere with nor hinder the reasonable surface use by the Department of Natural Resources, its Offices or Commissions, as herein above reserved.

Applicant: Oil And Gas Interests, Inc.

Bidder	Cash Payment	Price/ Acre	Rental	Oil	Gas	Other



TRACT 37194 - Portion of Blocks 39, and 40, Breton Sound Area, Plaquemines Parish, Louisiana

The beds and bottoms of all water bodies belonging to the State of Louisiana located in Blocks 39, and 40, Breton Sound Area, together with any present lands formed by accretion to the shoreline or islands formed therein, located in Plaquemines Parish, Louisiana, owned by and not presently under mineral lease as of March 9, 2005, from the State of Louisiana, the geographical area of which is more fully described as follows: Beginning at a point being the Northwest corner of Block 39, Breton Sound Area, having Coordinates of X = 2,723,850.00 and Y = 322,330.00; thence East 14,750.00 feet on the North line of said Block 39 to its Northeast corner, also being the Northwest corner of Block 40, Breton Sound Area, having Coordinates of X = 2,738,600.00 and Y = 322,330.00; thence East 2,986.04 feet on the North line of said Block 40 to a point having Coordinates of X = 2,741,586.04 and Y = 322,330.00; thence Southwesterly on a straight line to a point having Coordinates of X = 2,741,182 and Y = 321,817; thence Southwesterly on an arc having a radius of 18,240.60 feet and a center at X = 2,726,852 and Y = 333,103 to a point on the West line of said Block 40 and a point on the East line of said Block 39 having Coordinates of X = 2,738,600.00 and Y = 319,149.33; thence Southwesterly on an arc having a radius of 18,240.60 feet and a center at X = 2,726,852 and Y = 333,103 to a point having Coordinates of X = 2,738,042 and Y = 318,698; thence Southwesterly on a straight line to a point having Coordinates of X = 2,736,381 and Y = 317,408; thence Southwesterly on a straight line to a point having Coordinates of X = 2,736,060 and Y = 316,935; thence Southwesterly on a straight line to a point having Coordinates of X = 2,734,864.55 and Y = 314,955.00; thence West 11,014.55 feet to a point on the West line of said Block 39 having Coordinates of X = 2,723,850.00 and Y = 314,955.00; thence North 7,375.00 feet on the West line of said Block 39 to the point of beginning, containing approximately **2,402.07 acres, LESS AND EXCEPT** that portion thereof, if any, lying seaward of the line three nautical miles from the coast line of Louisiana, as said three mile line has been decreed by the Supreme Court of the United States, as determined by a Special Master appointed therein, in litigation styled **United States v. State of Louisiana et al No. 9 Original**, in 1975, all as more particularly outlined on a plat in the Office of Mineral Resources, Department of Natural Resources. All bearings, distances and coordinates are based on the Louisiana Coordinate System of 1927, (South Zone).

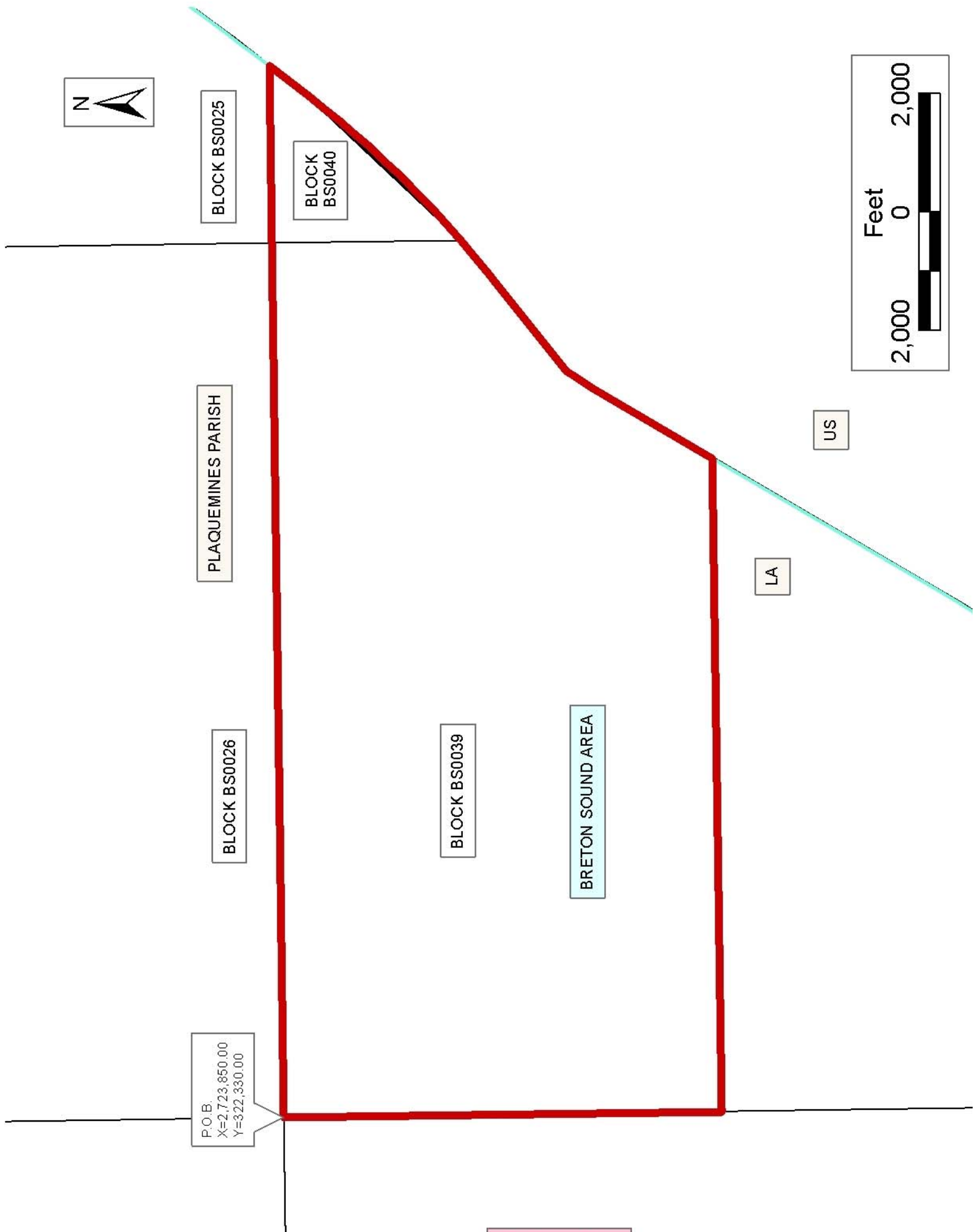
NOTE: The above description of the Tract nominated for lease has been provided and corrected, where required, exclusively by the nomination party. Any mineral lease selected from this Tract and awarded by the Louisiana State Mineral Board shall be without warranty of any kind, either express, implied, or statutory, including, but not limited to, the implied warranties of merchantability and fitness for a particular purpose. Should the mineral lease awarded by the Louisiana State Mineral Board be subsequently modified, cancelled or abrogated due to the existence of conflicting leases, operating agreements, private claims or

other future obligations or conditions which may affect all or any portion of the leased Tract, it shall not relieve the Lessee of the obligation to pay any bonus due thereon to the Louisiana State Mineral Board, nor shall the Louisiana State Mineral Board be obligated to refund any consideration paid by the Lessor prior to such modification, cancellation, or abrogation, including, but not limited to, bonuses, rentals and royalties.

NOTE: The State of Louisiana does hereby reserve, and this lease shall be subject to, the imprescriptible right of surface use in the nature of a servitude in favor of the Department of Natural Resources, including its Offices and Commissions, for the sole purpose of implementing, constructing, servicing and maintaining approved coastal zone management and/or restoration projects. Utilization of any and all rights derived under this lease by the mineral lessee, its agents, successors or assigns, shall not interfere with nor hinder the reasonable surface use by the Department of Natural Resources, its Offices or Commissions, as herein above reserved.

Applicant: Oil And Gas Interests, Inc.

Bidder	Cash Payment	Price/ Acre	Rental	Oil	Gas	Other



TRACT 37195 - Portion of Block 38, Breton Sound Area, Plaquemines Parish, Louisiana

The beds and bottoms of all water bodies belonging to the State of Louisiana located in Block 38, Breton Sound Area, together with any present lands formed by accretion to the shoreline or islands formed therein, located in Plaquemines Parish, Louisiana, owned by and not presently under mineral lease as of March 9, 2005, from the State of Louisiana, the geographical area of which is more fully described as follows: Beginning at a point being the Northeast corner of Block 38, Breton Sound Area, having Coordinates of X = 2,723,850.00 and Y = 322,330.00; thence South 7,375.00 feet on the East line of said Block 38 to a point on the East line of said Block 38 having Coordinates of X = 2,723,850.00 and Y = 314,955.00; thence West 14,750.00 feet to a point on the West line of said Block 38 having Coordinates of X = 2,709,100.00 and Y = 314,955.00; thence North 600.59 feet on the West line of said Block 38 to a point on the Coastline derived from the June 16, 1975 Decree in the United States vs. Louisiana No.9 Original having Coordinates of X = 2,709,100.00 and Y = 315,555.59; thence along said Coastline the following courses: North 71 degrees 03 minutes 12 seconds East 1,353.32 feet to a point having Coordinates of X = 2,710,380 and Y = 315,995, North 85 degrees 24 minutes 00 seconds East 1,396.50 feet to a point having Coordinates of X = 2,711,772 and Y = 316,107, North 65 degrees 54 minutes 27 seconds East 1,700.10 feet to a point having Coordinates of X = 2,713,324 and Y = 316,801, North 54 degrees 36 minutes 27 seconds East 1,605.73 feet to a point having Coordinates of X = 2,714,633 and Y = 317,731; North 42 degrees 24 minutes 57 seconds East 893.98 feet to a point having Coordinates of X = 2,715,236 and Y = 318,391; North 37 degrees 50 minutes 38 seconds East 2,894.82 feet to a point having Coordinates of X = 2,717,012 and Y = 320,677 and North 31 degrees 07 minutes 15 seconds East 1,930.90 feet to a point on the North line of said Block 38 having Coordinates of X = 2,718,009.98 and Y = 322,330.00; thence East 5,840.02 feet on the North line of said Block 23 to the point of beginning, containing approximately **1,550.45 acres**, all as more particularly outlined on a plat on file in the Office of Mineral Resources, Department of Natural Resources. All bearings, distances and coordinates are based on Louisiana Coordinate System of 1927, (North or South Zone).

NOTE: The above description of the Tract nominated for lease has been provided and corrected, where required, exclusively by the nomination party. Any mineral lease selected from this Tract and awarded by the Louisiana State Mineral Board shall be without warranty of any kind, either express, implied, or statutory, including, but not limited to, the implied warranties of merchantability and fitness for a particular purpose. Should the mineral lease awarded by the Louisiana State Mineral Board be subsequently modified, cancelled or abrogated due to the existence of conflicting leases, operating agreements, private claims or other future obligations or conditions which may affect all or any portion of the leased Tract, it shall not relieve the Lessee of the obligation to

pay any bonus due thereon to the Louisiana State Mineral Board, nor shall the Louisiana State Mineral Board be obligated to refund any consideration paid by the Lessor prior to such modification, cancellation, or abrogation, including, but not limited to, bonuses, rentals and royalties.

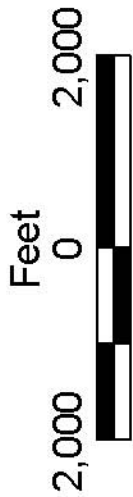
NOTE: The State of Louisiana does hereby reserve, and this lease shall be subject to, the imprescriptible right of surface use in the nature of a servitude in favor of the Department of Natural Resources, including its Offices and Commissions, for the sole purpose of implementing, constructing, servicing and maintaining approved coastal zone management and/or restoration projects. Utilization of any and all rights derived under this lease by the mineral lessee, its agents, successors or assigns, shall not interfere with nor hinder the reasonable surface use by the Department of Natural Resources, its Offices or Commissions, as herein above reserved.

Applicant: Oil And Gas Interests, Inc.

Bidder	Cash Payment	Price/ Acre	Rental	Oil	Gas	Other



P.O.B.
X=2,723,850.00
Y=322,330.00



BLOCK BS0027

BRETON SOUND AREA

PLAQUEMINES PARISH

BLOCK BS0038

SL 17941

TRACT 37196 - Portion of Block 38, Breton Sound Area, Plaquemines Parish, Louisiana

The beds and bottoms of all water bodies belonging to the State of Louisiana located in Block 38, Breton Sound Area, together with any present lands formed by accretion to the shoreline or islands formed therein, located in Plaquemines Parish, Louisiana, owned by and not presently under mineral lease as of March 9, 2005, from the State of Louisiana, the geographical area of which is more fully described as follows: Beginning at a point being the Southeast corner of Block 38, Breton Sound Area, having Coordinates of X = 2,723,850.00 and Y = 307,580.00; thence West 14,750.00 feet on the South line of said Block 38 to its Southwest corner having Coordinates of X = 2,709,100.00 and Y = 307,580.00; thence North 7,375.00 feet on the West line of said Block 38 to a point having Coordinates of X = 2,709,100.00 and Y = 314,955.00; thence East 14,750.00 feet to a point on the East line of said Block 38 having Coordinates of X = 2,723,850.00 and Y = 314,955.00; thence South 7,375.00 feet on the East line of said Block 38 to the point of beginning, containing approximately **2,497.27 acres**, all as more particularly outlined on a plat on file in the Office of Mineral Resources, Department of Natural Resources. All bearings, distances and coordinates are based on Louisiana Coordinate System of 1927, (North or South Zone).

NOTE: The above description of the Tract nominated for lease has been provided and corrected, where required, exclusively by the nomination party. Any mineral lease selected from this Tract and awarded by the Louisiana State Mineral Board shall be without warranty of any kind, either express, implied, or statutory, including, but not limited to, the implied warranties of merchantability and fitness for a particular purpose. Should the mineral lease awarded by the Louisiana State Mineral Board be subsequently modified, cancelled or abrogated due to the existence of conflicting leases, operating agreements, private claims or other future obligations or conditions which may affect all or any portion of the leased Tract, it shall not relieve the Lessee of the obligation to pay any bonus due thereon to the Louisiana State Mineral Board, nor shall the Louisiana State Mineral Board be obligated to refund any consideration paid by the Lessor prior to such modification, cancellation, or abrogation, including, but not limited to, bonuses, rentals and royalties.

NOTE: The State of Louisiana does hereby reserve, and this lease shall be subject to, the imprescriptible right of surface use in the nature of a servitude in favor of the Department of Natural Resources, including its Offices and Commissions, for the sole purpose of implementing, constructing, servicing and maintaining approved coastal zone management and/or restoration projects. Utilization of any and all rights derived under this lease by the mineral lessee, its agents, successors or assigns, shall not interfere with nor hinder the reasonable surface use by the Department of Natural Resources, its Offices or Commissions, as herein above reserved.

NOTE: It appears, according to our records, that a portion of this Tract is located within the restrictive safety fairway area as set out by the Corps of Engineers, U.S. Army and/or the restrictive anchorage area as set out by the U.S. Coast Guard.

Applicant: Oil And Gas Interests, Inc.

Bidder	Cash Payment	Price/ Acre	Rental	Oil	Gas	Other



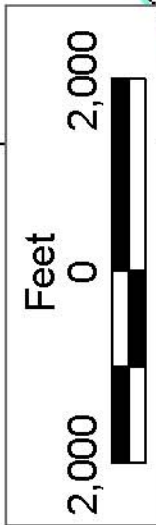
BLOCK BS0038

BRETON SOUND AREA

BLOCK BS0043

PLAQUEMINES PARISH

P.O.B.
X=2,723,850.00
Y=307,580.00



SL 17941

SL 17944

TRACT 37197 - Portion of Blocks 39, and 42, Breton Sound Area, Plaquemines Parish, Louisiana

The beds and bottoms of all water bodies belonging to the State of Louisiana located in Blocks 39, and 42, Breton Sound Area, together with any present lands formed by accretion to the shoreline or islands formed therein, located in Plaquemines Parish, Louisiana, owned by and not presently under mineral lease as of March 9, 2005, from the State of Louisiana, the geographical area of which is more fully described as follows: Beginning at a point on the West line of Block 39, Breton Sound Area, having Coordinates of X = 2,723,850.00 and Y = 314,955.00; thence East 11,014.55 feet to a point having Coordinates of X = 2,734,864.55 and Y = 314,955.00; thence Southwesterly on a straight line to a point having Coordinates of X = 2,732,627 and Y = 311,249; thence Southwesterly on an arc having a radius of 18,240.60 feet and a center at X = 2,717,012 and Y = 320,677 to a point having Coordinates of X = 2,731,416 and Y = 309,486; thence Southwesterly on a straight line to a point on the South line of said Block 39, also being a point on the North line of Block 42, Breton Sound Area, having Coordinates of X = 2,729,935.22 and Y = 307,580.00; thence Southwesterly on a straight line to a point having Coordinates of X = 2,729,640 and Y = 307,200; thence Southwesterly on an arc having a radius of 18,240.60 feet and a center at X = 2,715,236 and Y = 318,391 to a point having Coordinates of X = 2,728,702 and Y = 306,088; thence Southwesterly on a straight line to a point having Coordinates of X = 2,728,099 and Y = 305,428; thence Southwesterly on an arc having a radius of 18,240.60 feet and a center at X = 2,714,633 and Y = 317,731 to a point having Coordinates of X = 2,725,197 and Y = 302,861; thence Southwesterly on a straight line to a point having Coordinates of X = 2,723,888 and Y = 301,931; thence Southwesterly on an arc having a radius of 18,240.60 feet and a center at X = 2,713,324 and Y = 316,801 to a point on the West line of said Block 42 having Coordinates of X = 2,723,850.00 and Y = 301,904.07; thence North 5,675.93 feet on the West line of said Block 42 to its Northwest corner, also being the Southwest corner of said Block 39 having Coordinates of X = 2,723,850.00 and Y = 307,580.00; thence North 7,375.00 feet on the West line of said Block 39 to the point of beginning containing, approximately **1,915.03 acres, LESS AND EXCEPT** that portion thereof, if any, lying seaward of the line three nautical miles from the coast line of Louisiana, as said three mile line has been decreed by the Supreme Court of the United States, as determined by a Special Master appointed therein, in litigation styled **United States v. State of Louisiana et al No. 9 Original**, in 1975, all as more particularly outlined on a plat in the Office of Mineral Resources, Department of Natural Resources. All bearings, distances and coordinates are based on the Louisiana Coordinate System of 1927, (South Zone).

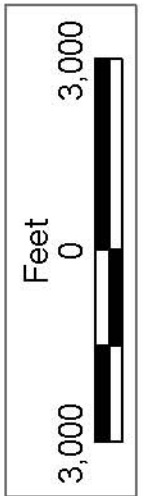
NOTE: The above description of the Tract nominated for lease has been provided and corrected, where required, exclusively by the nomination party. Any mineral lease selected from this Tract and awarded by the Louisiana State Mineral Board shall be without warranty of any kind, either express, implied, or statutory, including, but not limited to, the

implied warranties of merchantability and fitness for a particular purpose. Should the mineral lease awarded by the Louisiana State Mineral Board be subsequently modified, cancelled or abrogated due to the existence of conflicting leases, operating agreements, private claims or other future obligations or conditions which may affect all or any portion of the leased Tract, it shall not relieve the Lessee of the obligation to pay any bonus due thereon to the Louisiana State Mineral Board, nor shall the Louisiana State Mineral Board be obligated to refund any consideration paid by the Lessor prior to such modification, cancellation, or abrogation, including, but not limited to, bonuses, rentals and royalties.

NOTE: The State of Louisiana does hereby reserve, and this lease shall be subject to, the imprescriptible right of surface use in the nature of a servitude in favor of the Department of Natural Resources, including its Offices and Commissions, for the sole purpose of implementing, constructing, servicing and maintaining approved coastal zone management and/or restoration projects. Utilization of any and all rights derived under this lease by the mineral lessee, its agents, successors or assigns, shall not interfere with nor hinder the reasonable surface use by the Department of Natural Resources, its Offices or Commissions, as herein above reserved.

Applicant: Oil And Gas Interests, Inc.

Bidder	Cash Payment	Price/ Acre	Rental	Oil	Gas	Other



PLAQUEMINES PARISH

BLOCK BS0039

P.O.B.
X=2,723,850.00
Y=314,955.00

BLOCK BS0038

BRETON SOUND AREA

BLOCK BS0042

BLOCK BS0043

LA

US

TRACT 37198 - Portion of Block 43, Breton Sound Area, Plaquemines Parish, Louisiana

The beds and bottoms of all water bodies belonging to the State of Louisiana located in Block 43, Breton Sound Area, together with any present lands formed by accretion to the shoreline or islands formed therein, located in Plaquemines Parish, Louisiana, owned by and not presently under mineral lease as of March 9, 2005, from the State of Louisiana, the geographical area of which is more fully described as follows: Beginning at a point being the Northeast corner of Block 43, Breton Sound Area, having Coordinates of X = 2,723,850.00 and Y = 307,580.00; thence South 5,675.93 feet on the East line of said Block 43 to a point on the Three Mile Decree Line derived from the June 16, 1975 Decree in the United States vs. Louisiana No.9 Original having Coordinates of X = 2,723,850.00 and Y = 301,904.07; thence on an arc to the right with a radius of 18,240.60 feet and a chord bearing South 60 degrees 06 minutes 39 seconds West 3,409.55 feet to a point having Coordinates of X = 2,720,893.95 and Y = 300,205.00; thence West 11,793.95 feet to a point on the West line of said Block 43 having Coordinates of X = 2,709,100.00 and Y = 300,205.00; thence North 7,375.00 feet on the West line of said Block 43 to the Northwest corner of said Block 43 having Coordinates of X = 2,709,100.00 and Y = 307,580.00; thence East 14,750.00 feet on the North line of said Block 43 to the point of beginning, containing approximately **2,443.79 acres, LESS AND EXCEPT** that portion thereof, if any, lying seaward of the line three nautical miles from the coast line of Louisiana, as said three mile line has been decreed by the Supreme Court of the United States, as determined by a Special Master appointed therein, in litigation styled **United States v. State of Louisiana et al No. 9 Original**, in 1975, all as more particularly outlined on a plat in the Office of Mineral Resources, Department of Natural Resources. All bearings, distances and coordinates are based on the Louisiana Coordinate System of 1927, (South Zone).

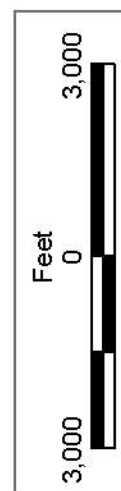
NOTE: The above description of the Tract nominated for lease has been provided and corrected, where required, exclusively by the nomination party. Any mineral lease selected from this Tract and awarded by the Louisiana State Mineral Board shall be without warranty of any kind, either express, implied, or statutory, including, but not limited to, the implied warranties of merchantability and fitness for a particular purpose. Should the mineral lease awarded by the Louisiana State Mineral Board be subsequently modified, cancelled or abrogated due to the existence of conflicting leases, operating agreements, private claims or other future obligations or conditions which may affect all or any portion of the leased Tract, it shall not relieve the Lessee of the obligation to pay any bonus due thereon to the Louisiana State Mineral Board, nor shall the Louisiana State Mineral Board be obligated to refund any consideration paid by the Lessor prior to such modification, cancellation, or abrogation, including, but not limited to, bonuses, rentals and royalties.

NOTE: The State of Louisiana does hereby reserve, and this lease shall be subject to, the imprescriptible right of surface use in the nature of a servitude in favor of the Department of Natural Resources, including its Offices and Commissions, for the sole purpose of implementing, constructing, servicing and maintaining approved coastal zone management and/or restoration projects. Utilization of any and all rights derived under this lease by the mineral lessee, its agents, successors or assigns, shall not interfere with nor hinder the reasonable surface use by the Department of Natural Resources, its Offices or Commissions, as herein above reserved.

NOTE: It appears, according to our records, that a portion of this Tract is located within the restrictive safety fairway area as set out by the Corps of Engineers, U.S. Army and/or the restrictive anchorage area as set out by the U.S. Coast Guard.

Applicant: Oil And Gas Interests, Inc.

Bidder	Cash Payment	Price/ Acre	Rental	Oil	Gas	Other



PLAQUEMINES PARISH

BRETON SOUND AREA

P.O.B.
X=2,723,850.00
Y=307,580.00

BLOCK BS0039

BLOCK BS0042

BLOCK BS0038

BLOCK BS0043

LA

US

SL 17941

BLOCK BS0037

SL 17944

BLOCK BS0044