

**TRACT 36153 - St. Bernard Parish, Louisiana**

All of the lands now or formerly constituting the beds and bottoms of all water bodies of every nature and description the title of which vests in the State of Louisiana, together with all islands arising therein and other lands formed by accretion or by reliction, where allowed by law, excepting tax adjudicated lands, and not presently under mineral lease on March 10, 2004, situated in St. Bernard Parish, Louisiana, and more particularly described as follows: Beginning at a point having Coordinates of X = 2,518,250.00 and Y = 490,858.70; thence North 5,970.33 feet to a point on the South Line of State Lease No. 17074 having Coordinates of X = 2,518,250.00 and Y = 496,829.03; thence Northeasterly along the East Line of said State Lease No. 17074 to a point having Coordinates of X = 2,518,332.98 and Y = 496,908.70; thence East 17,917.02 feet to a point having Coordinates of X = 2,536,250.00 and Y = 496,908.70; thence South 6,050.00 feet to a point having Coordinates of X = 2,536,250.00 and Y = 490,858.70; thence West 18,000.00 feet to the point of beginning, containing approximately **2,499.92 acres**, all as more particularly outlined on a plat on file in the Office of Mineral Resources, Department of Natural Resources. All bearings, distances and coordinates are based on Louisiana Coordinate System of 1927, (North or South Zone), where applicable.

NOTE: The above description of the Tract nominated for lease has been provided and corrected, where required, exclusively by the nomination party. Any mineral lease selected from this Tract and awarded by the Louisiana State Mineral Board shall be without warranty of any kind, either express, implied, or statutory, including, but not limited to, the implied warranties of merchantability and fitness for a particular purpose. Should the mineral lease awarded by the Louisiana State Mineral Board be subsequently modified, cancelled or abrogated due to the existence of conflicting leases, operating agreements, private claims or other future obligations or conditions which may affect all or any portion of the leased Tract, it shall not relieve the Lessee of the obligation to pay any bonus due thereon to the Louisiana State Mineral Board, nor shall the Louisiana State Mineral Board be obligated to refund any consideration paid by the Lessor prior to such modification, cancellation, or abrogation, including, but not limited to, bonuses, rentals and royalties.

NOTE: The Office of Mineral Resources will require a minimum bonus of \$230 per acre and a minimum royalty of 23%.

NOTE: The State of Louisiana does hereby reserve, and this lease shall be subject to, the imprescriptible right of surface use in the nature of a servitude in favor of the Department of Natural Resources, including its Offices and Commissions, for the sole purpose of implementing, constructing, servicing and maintaining approved coastal zone management and/or restoration projects. Utilization of any and all rights derived under this lease by the mineral lessee, its agents, successors or assigns, shall not interfere with nor hinder the reasonable surface use by the

Department of Natural Resources, its Offices or Commissions, as herein above reserved.

NOTE: The Department of Wildlife and Fisheries has designated certain areas in the coastal waters of the State of Louisiana as Oyster Seed Bed Areas. The exact location of those Seed Bed Areas must be obtained from the Department of Wildlife and Fisheries and any work done under a mineral lease from the State of Louisiana may necessarily be conducted in conformity with the rules and regulations promulgated by the said Department of Wildlife and Fisheries for Oyster Seed Bed Areas.

Applicant: Cypress Energy Corporation

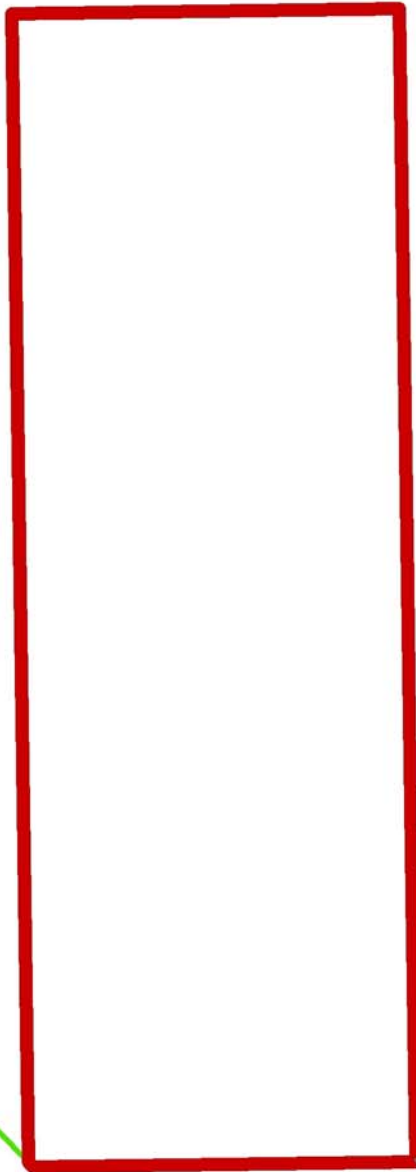
Bidder	Cash Payment	Price/Acre	Rental	Oil	Gas	Other



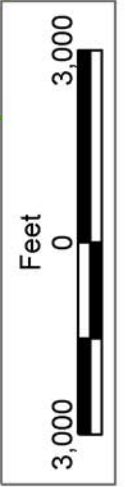
ST BERNARD PARISH

S.L. 17074

LAKE BORGNE



P.O.B.  
X=2,518,250.00  
Y=490,858.70



**TRACT 36154 - St. Bernard Parish, Louisiana**

All of the lands now or formerly constituting the beds and bottoms of all water bodies of every nature and description the title of which vests in the State of Louisiana, together with all islands arising therein and other lands formed by accretion or by reliction, where allowed by law, excepting tax adjudicated lands, and not presently under mineral lease on March 10, 2004, situated in St. Bernard Parish, Louisiana, and more particularly described as follows: Beginning at a point having Coordinates of X = 2,554,250.00 and Y = 490,858.70; thence West 18,000.00 feet to a point having Coordinates of X = 2,536,250.00 and Y = 490,858.70; thence North 6,050.00 feet to a point having Coordinates of X = 2,536,250.00 and Y = 496,908.70; thence East 18,000.00 feet to a point having Coordinates of X = 2,554,250.00 and Y = 496,908.70; thence South 6,050.00 feet to the point of beginning, containing approximately **2,500.00 acres**, all as more particularly outlined on a plat on file in the Office of Mineral Resources, Department of Natural Resources. All bearings, distances and coordinates are based on Louisiana Coordinate System of 1927, (North or South Zone), where applicable.

NOTE: The above description of the Tract nominated for lease has been provided and corrected, where required, exclusively by the nomination party. Any mineral lease selected from this Tract and awarded by the Louisiana State Mineral Board shall be without warranty of any kind, either express, implied, or statutory, including, but not limited to, the implied warranties of merchantability and fitness for a particular purpose. Should the mineral lease awarded by the Louisiana State Mineral Board be subsequently modified, cancelled or abrogated due to the existence of conflicting leases, operating agreements, private claims or other future obligations or conditions which may affect all or any portion of the leased Tract, it shall not relieve the Lessee of the obligation to pay any bonus due thereon to the Louisiana State Mineral Board, nor shall the Louisiana State Mineral Board be obligated to refund any consideration paid by the Lessor prior to such modification, cancellation, or abrogation, including, but not limited to, bonuses, rentals and royalties.

NOTE: The Office of Mineral Resources will require a minimum bonus of \$230 per acre and a minimum royalty of 23%.

NOTE: The State of Louisiana does hereby reserve, and this lease shall be subject to, the imprescriptible right of surface use in the nature of a servitude in favor of the Department of Natural Resources, including its Offices and Commissions, for the sole purpose of implementing, constructing, servicing and maintaining approved coastal zone management and/or restoration projects. Utilization of any and all rights derived under this lease by the mineral lessee, its agents, successors or assigns, shall not interfere with nor hinder the reasonable surface use by the Department of Natural Resources, its Offices or Commissions, as herein above reserved.

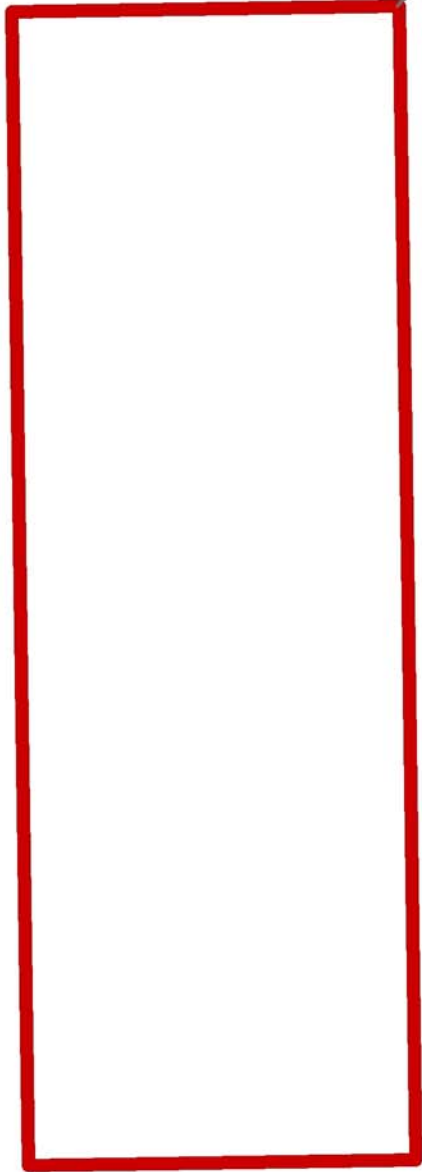
NOTE: The Department of Wildlife and Fisheries has designated certain areas in the coastal waters of the State of Louisiana as Oyster Seed Bed Areas. The exact location of those Seed Bed Areas must be obtained from the Department of Wildlife and Fisheries and any work done under a mineral lease from the State of Louisiana may necessarily be conducted in conformity with the rules and regulations promulgated by the said Department of Wildlife and Fisheries for Oyster Seed Bed Areas.

Applicant: Cypress Energy Corporation

Bidder	Cash Payment	Price/Acre	Rental	Oil	Gas	Other

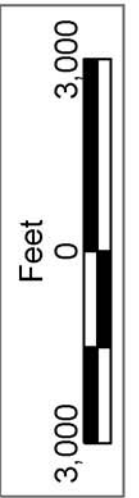


ST BERNARD PARISH



P.O.B.  
X=2,554,250.00  
Y=490,858.70

LAKE BORGNE



**TRACT 36155 - St. Bernard Parish, Louisiana**

All of the lands now or formerly constituting the beds and bottoms of all water bodies of every nature and description the title of which vests in the State of Louisiana, together with all islands arising therein and other lands formed by accretion or by reliction, where allowed by law, excepting tax adjudicated lands, and not presently under mineral lease on March 10, 2004, situated in St. Bernard Parish, Louisiana, and more particularly described as follows: Beginning at a point having Coordinates of X = 2,554,250.00 and Y = 490,858.70; thence North 6,050.00 feet to a point having Coordinates of X = 2,554,250.00 and Y = 496,908.70; thence East 12,992.00 feet to a point having Coordinates of X = 2,567,242.00 and Y = 496,908.70; thence South 1,898.97 feet to a point on the North Line of State Lease No. 17810 having Coordinates of X = 2,567,242.00 and Y = 495,009.73; thence along the boundary of said State Lease No. 17810 the following: West 1,747.16 feet and South approximately 3,330.00 feet to the Lake Borgne Shoreline and a point on the North Line of State Lease No. 17768; thence Southwesterly along said Shoreline and said State Lease No. 17768 to a point having a Coordinate of Y = 490,858.70; thence West approximately 9,252 feet to the point of beginning, containing approximately **1,608.00 acres**, all as more particularly outlined on a plat on file in the Office of Mineral Resources, Department of Natural Resources. All bearings, distances and coordinates are based on Louisiana Coordinate System of 1927, (North or South Zone), where applicable.

NOTE: The above description of the Tract nominated for lease has been provided and corrected, where required, exclusively by the nomination party. Any mineral lease selected from this Tract and awarded by the Louisiana State Mineral Board shall be without warranty of any kind, either express, implied, or statutory, including, but not limited to, the implied warranties of merchantability and fitness for a particular purpose. Should the mineral lease awarded by the Louisiana State Mineral Board be subsequently modified, cancelled or abrogated due to the existence of conflicting leases, operating agreements, private claims or other future obligations or conditions which may affect all or any portion of the leased Tract, it shall not relieve the Lessee of the obligation to pay any bonus due thereon to the Louisiana State Mineral Board, nor shall the Louisiana State Mineral Board be obligated to refund any consideration paid by the Lessor prior to such modification, cancellation, or abrogation, including, but not limited to, bonuses, rentals and royalties.

NOTE: The Office of Mineral Resources will require a minimum bonus of \$230 per acre and a minimum royalty of 23%.

NOTE: The State of Louisiana does hereby reserve, and this lease shall be subject to, the imprescriptible right of surface use in the nature of a servitude in favor of the Department of Natural Resources, including its Offices and Commissions, for the sole purpose of implementing, constructing, servicing and maintaining approved coastal zone management and/or restoration projects. Utilization of any and all rights derived

under this lease by the mineral lessee, its agents, successors or assigns, shall not interfere with nor hinder the reasonable surface use by the Department of Natural Resources, its Offices or Commissions, as herein above reserved.

NOTE: The Department of Wildlife and Fisheries has designated certain areas in the coastal waters of the State of Louisiana as Oyster Seed Bed Areas. The exact location of those Seed Bed Areas must be obtained from the Department of Wildlife and Fisheries and any work done under a mineral lease from the State of Louisiana may necessarily be conducted in conformity with the rules and regulations promulgated by the said Department of Wildlife and Fisheries for Oyster Seed Bed Areas.

Applicant: Cypress Energy Corporation

Bidder	Cash Payment	Price/Acre	Rental	Oil	Gas	Other





LAKE BORGNE

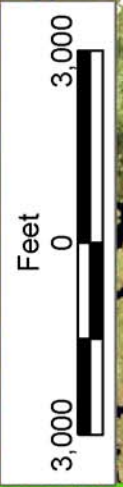
ST BERNARD PARISH

S.L. 17810

T12S - R17E

T12S - R16E

S.L. 17768



P.O.B.  
X=2,554,250.00  
Y=490,858.70

**TRACT 36156 - St. Bernard Parish, Louisiana**

All of the lands now or formerly constituting the beds and bottoms of all water bodies of every nature and description the title of which vests in the State of Louisiana, together with all islands arising therein and other lands formed by accretion or by reliction, where allowed by law, excepting tax adjudicated lands, and not presently under mineral lease on March 10, 2004, situated in St. Bernard Parish, Louisiana, and more particularly described as follows: Beginning at a point having Coordinates of X = 2,518,250.00 and Y = 490,858.70; thence East 12,869.50 feet to a point having Coordinates of X = 2,531,119.50 and Y = 490,858.70; thence South 4,852.89 feet to the Northeast corner of State Lease No. 17075, as amended having Coordinates of X = 2,531,119.50 and Y = 486,005.81; thence along the boundary of said State Lease No. 17075 the following: West 3,397.56 feet to its Northwest corner having Coordinates of X = 2,527,721.94 and Y = 486,005.81 and South 3,397.56 feet to its Southwest corner having Coordinates of X = 2,527,721.94 and Y = 484,063.58, also being the Northwest corner of State Lease No. 17077; thence continue South to the Southwest corner of said State Lease No. 17077 having Coordinates of X = 2,527,721.94 and Y = 482,608.25; thence West 9,471.94 feet to a point having Coordinates of X = 2,518,250.00 and Y = 482,608.25; thence North 8,250.45 feet to the point of beginning, containing approximately **2,172.54 acres**, all as more particularly outlined on a plat on file in the Office of Mineral Resources, Department of Natural Resources. All bearings, distances and coordinates are based on Louisiana Coordinate System of 1927, (North or South Zone), where applicable.

NOTE: The above description of the Tract nominated for lease has been provided and corrected, where required, exclusively by the nomination party. Any mineral lease selected from this Tract and awarded by the Louisiana State Mineral Board shall be without warranty of any kind, either express, implied, or statutory, including, but not limited to, the implied warranties of merchantability and fitness for a particular purpose. Should the mineral lease awarded by the Louisiana State Mineral Board be subsequently modified, cancelled or abrogated due to the existence of conflicting leases, operating agreements, private claims or other future obligations or conditions which may affect all or any portion of the leased Tract, it shall not relieve the Lessee of the obligation to pay any bonus due thereon to the Louisiana State Mineral Board, nor shall the Louisiana State Mineral Board be obligated to refund any consideration paid by the Lessor prior to such modification, cancellation, or abrogation, including, but not limited to, bonuses, rentals and royalties.

NOTE: The Office of Mineral Resources will require a minimum bonus of \$230 per acre and a minimum royalty of 23%.

NOTE: The State of Louisiana does hereby reserve, and this lease shall be subject to, the imprescriptible right of surface use in the nature of a servitude in favor of the Department of Natural Resources, including its Offices and Commissions, for the sole purpose of implementing,

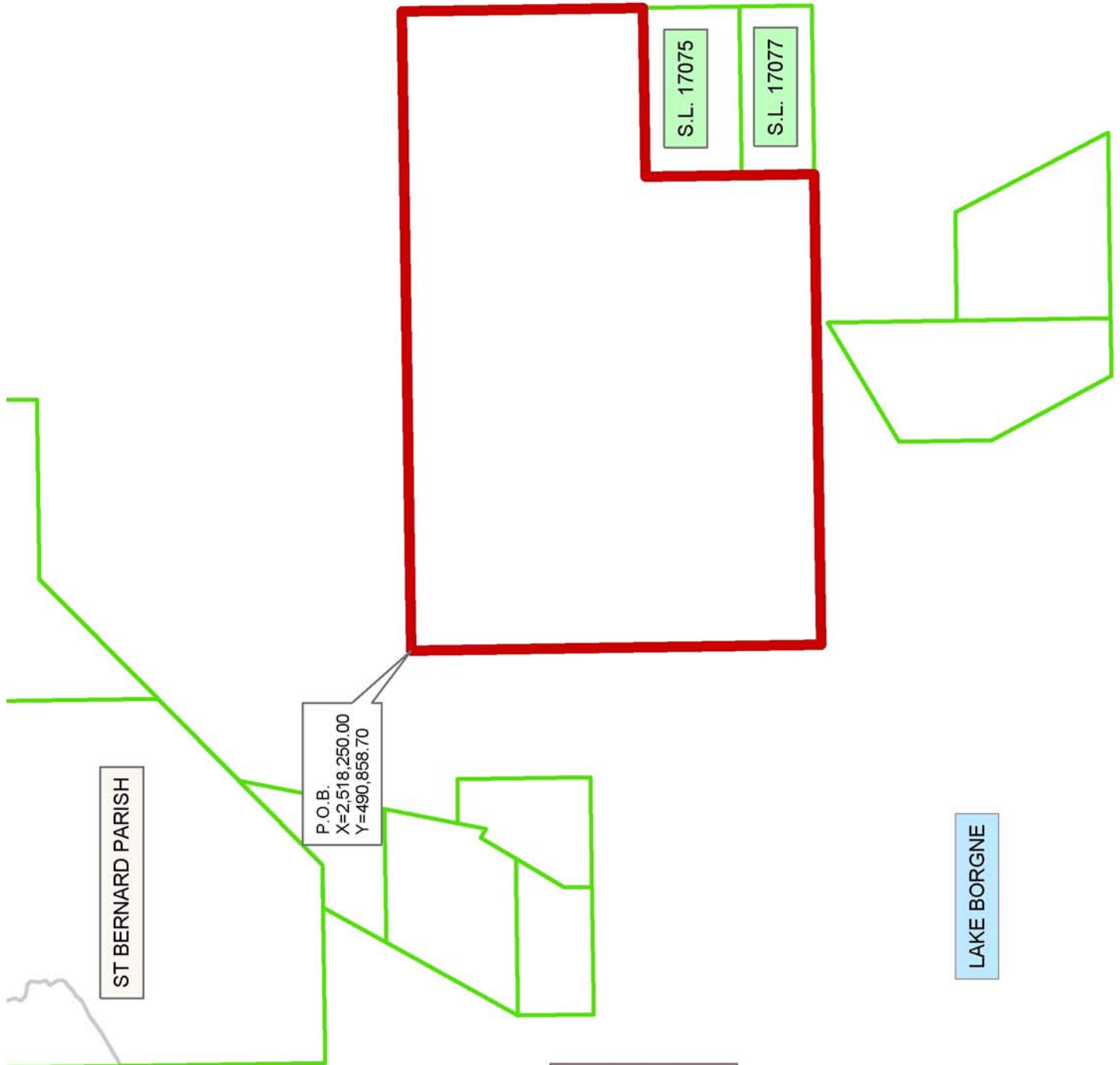
constructing, servicing and maintaining approved coastal zone management and/or restoration projects. Utilization of any and all rights derived under this lease by the mineral lessee, its agents, successors or assigns, shall not interfere with nor hinder the reasonable surface use by the Department of Natural Resources, its Offices or Commissions, as herein above reserved.

NOTE: The Department of Wildlife and Fisheries has designated certain areas in the coastal waters of the State of Louisiana as Oyster Seed Bed Areas. The exact location of those Seed Bed Areas must be obtained from the Department of Wildlife and Fisheries and any work done under a mineral lease from the State of Louisiana may necessarily be conducted in conformity with the rules and regulations promulgated by the said Department of Wildlife and Fisheries for Oyster Seed Bed Areas.

Applicant: Cypress Energy Corporation

Bidder	Cash Payment	Price/Acre	Rental	Oil	Gas	Other





ST BERNARD PARISH

P.O.B.  
X=2,518,250.00  
Y=490,858.70

S.L. 17075

S.L. 17077

LAKE BORGNE

**TRACT 36157 - St. Bernard Parish, Louisiana**

All of the lands now or formerly constituting the beds and bottoms of all water bodies of every nature and description the title of which vests in the State of Louisiana, together with all islands arising therein and other lands formed by accretion or by reliction, where allowed by law, excepting tax adjudicated lands, and not presently under mineral lease on March 10, 2004, situated in St. Bernard Parish, Louisiana, and more particularly described as follows: Beginning at a point having Coordinates of X = 2,545,575.84 and Y = 490,858.70; thence South 3,638.85 feet to a point on the North Line of State Lease No. 17078 having Coordinates of X = 2,545,575.84 and Y = 487,219.85; thence along the boundary of said State Lease No. 17078 the following: West 6,083.89 feet to its Northwest corner having Coordinates of X = 2,539,491.95 and Y = 487,219.85, South 3,156.27 to its Southwest corner having Coordinates of X = 2,539,491.95 and Y = 484,063.58 and East to a point on the South Line of said State Lease No. 17078 having Coordinates of X = 2,545,575.84 and Y = 484,063.58; thence South 1,789.50 feet to a point having Coordinates of X = 2,545,575.84 and Y = 482,274.08; thence West 14,456.34 feet to a point having Coordinates of X = 2,531,119.50 and Y = 482,274.08; thence North 334.17 feet to the Southeast corner of State Lease No. 17077 having Coordinates of X = 2,531,119.50 and Y = 482,608.25; thence North 1,455.33 feet to its Northeast corner and the Southeast corner of State Lease No. 17075, as amended; thence continue North 1,942.23 feet to the Northeast corner of said State Lease No. 17075 having Coordinates of X = 2,531,119.50 and Y = 486,005.81; thence continue North 4,852.89 feet to a point having Coordinates of X = 2,531,119.50 and Y = 490,858.70; thence East 14,456.34 feet to the point of beginning, containing approximately **2,408.17 acres**, all as more particularly outlined on a plat on file in the Office of Mineral Resources, Department of Natural Resources. All bearings, distances and coordinates are based on Louisiana Coordinate System of 1927, (North or South Zone), where applicable.

NOTE: The above description of the Tract nominated for lease has been provided and corrected, where required, exclusively by the nomination party. Any mineral lease selected from this Tract and awarded by the Louisiana State Mineral Board shall be without warranty of any kind, either express, implied, or statutory, including, but not limited to, the implied warranties of merchantability and fitness for a particular purpose. Should the mineral lease awarded by the Louisiana State Mineral Board be subsequently modified, cancelled or abrogated due to the existence of conflicting leases, operating agreements, private claims or other future obligations or conditions which may affect all or any portion of the leased Tract, it shall not relieve the Lessee of the obligation to pay any bonus due thereon to the Louisiana State Mineral Board, nor shall the Louisiana State Mineral Board be obligated to refund any consideration paid by the Lessor prior to such modification, cancellation, or abrogation, including, but not limited to, bonuses, rentals and royalties.

NOTE: The Office of Mineral Resources will require a minimum bonus of \$230 per acre and a minimum royalty of 23%.

NOTE: The State of Louisiana does hereby reserve, and this lease shall be subject to, the imprescriptible right of surface use in the nature of a servitude in favor of the Department of Natural Resources, including its Offices and Commissions, for the sole purpose of implementing, constructing, servicing and maintaining approved coastal zone management and/or restoration projects. Utilization of any and all rights derived under this lease by the mineral lessee, its agents, successors or assigns, shall not interfere with nor hinder the reasonable surface use by the Department of Natural Resources, its Offices or Commissions, as herein above reserved.

NOTE: The Department of Wildlife and Fisheries has designated certain areas in the coastal waters of the State of Louisiana as Oyster Seed Bed Areas. The exact location of those Seed Bed Areas must be obtained from the Department of Wildlife and Fisheries and any work done under a mineral lease from the State of Louisiana may necessarily be conducted in conformity with the rules and regulations promulgated by the said Department of Wildlife and Fisheries for Oyster Seed Bed Areas.

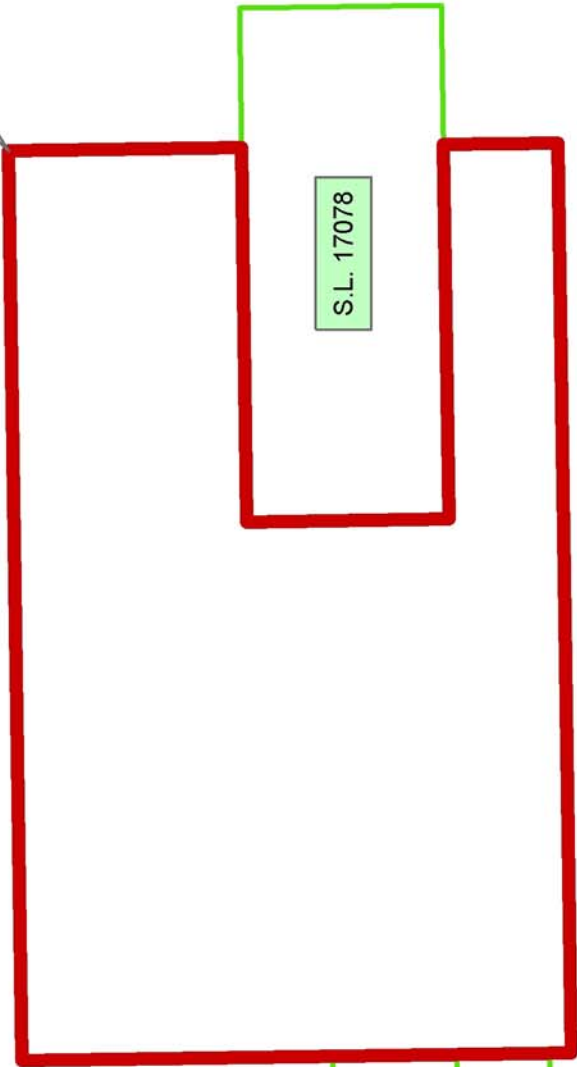
Applicant: Cypress Energy Corporation

Bidder	Cash Payment	Price/Acre	Rental	Oil	Gas	Other

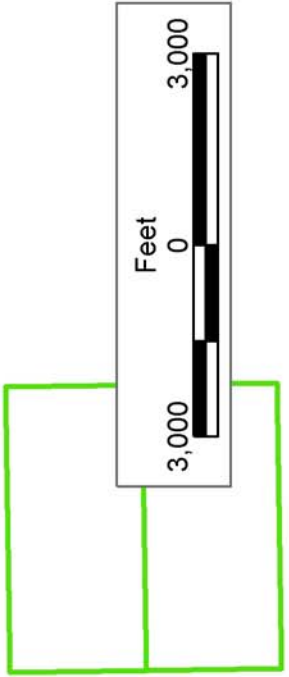


LAKE BORGNE

P.O.B.  
X=2,545,575.84  
Y=490,858.70



ST BERNARD PARISH



**TRACT 36158 - St. Bernard Parish, Louisiana**

All of the lands now or formerly constituting the beds and bottoms of all water bodies of every nature and description the title of which vests in the State of Louisiana, together with all islands arising therein and other lands formed by accretion or by reliction, where allowed by law, excepting tax adjudicated lands, and not presently under mineral lease on March 10, 2004, situated in St. Bernard Parish, Louisiana, and more particularly described as follows: Beginning at a point having Coordinates of X = 2,545,575.84 and Y = 490,858.70; thence East 18,480.00 feet to a point having Coordinates of X = 2,564,055.84 and Y = 490,858.70; thence South 13,558.70 feet to the North Line of State Lease No. 17088 having Coordinates of X = 2,564,055.84 and Y = 477,300.00; thence West 6,500.08 feet along the North Line of said State Lease No. 17088 to a point having Coordinates of X = 2,557,555.76 and Y = 477,300.00; thence North 586.40 feet to a point having Coordinates of X = 2,557,555.76 and Y = 477,886.40; thence West 800.48 feet to a point having Coordinates of X = 2,556,755.28 and Y = 477,886.40; thence North 4,387.68 feet to a point having Coordinates of X = 2,556,755.28 and Y = 482,274.08; thence West 11,179.44 feet to a point having Coordinates of X = 2,545,575.84 and Y = 482,274.08; thence North 1,789.50 feet to a point on the South Line of State Lease No. 17078 having Coordinates of X = 2,545,575.84 and Y = 484,063.58; then along the boundary of said State Lease No. 17078 the following: East to its Southeast corner having Coordinates of X = 2,547,522.23 and Y = 484,063.58, North to its Northeast corner having Coordinates of X = 2,547,522.23 and Y = 487,219.85 and West to a point on the North Line of said State Lease No. 17078 having Coordinates of X = 2,545,575.84 and Y = 487,219.85; thence North 3,638.85 feet to the point of beginning, **LESS AND EXCEPT** all that portion of State Lease 17768 that may lie within the above described tract, and **LESS AND EXCEPT** all that portion of Biloxi Wildlife Management Area that may lie within the above described tract, containing approximately **2,474.00 acres**, all as more particularly outlined on a plat on file in the Office of Mineral Resources, Department of Natural Resources. All bearings, distances and coordinates are based on Louisiana Coordinate System of 1927, (North or South Zone), where applicable.

NOTE: The above description of the Tract nominated for lease has been provided and corrected, where required, exclusively by the nomination party. Any mineral lease selected from this Tract and awarded by the Louisiana State Mineral Board shall be without warranty of any kind, either express, implied, or statutory, including, but not limited to, the implied warranties of merchantability and fitness for a particular purpose. Should the mineral lease awarded by the Louisiana State Mineral Board be subsequently modified, cancelled or abrogated due to the existence of conflicting leases, operating agreements, private claims or other future obligations or conditions which may affect all or any portion of the leased Tract, it shall not relieve the Lessee of the obligation to pay any bonus due thereon to the Louisiana State Mineral Board, nor shall the Louisiana State Mineral Board be obligated to refund any consideration



paid by the Lessor prior to such modification, cancellation, or abrogation, including, but not limited to, bonuses, rentals and royalties.

NOTE: The Office of Mineral Resources will require a minimum bonus of \$230 per acre and a minimum royalty of 23%.

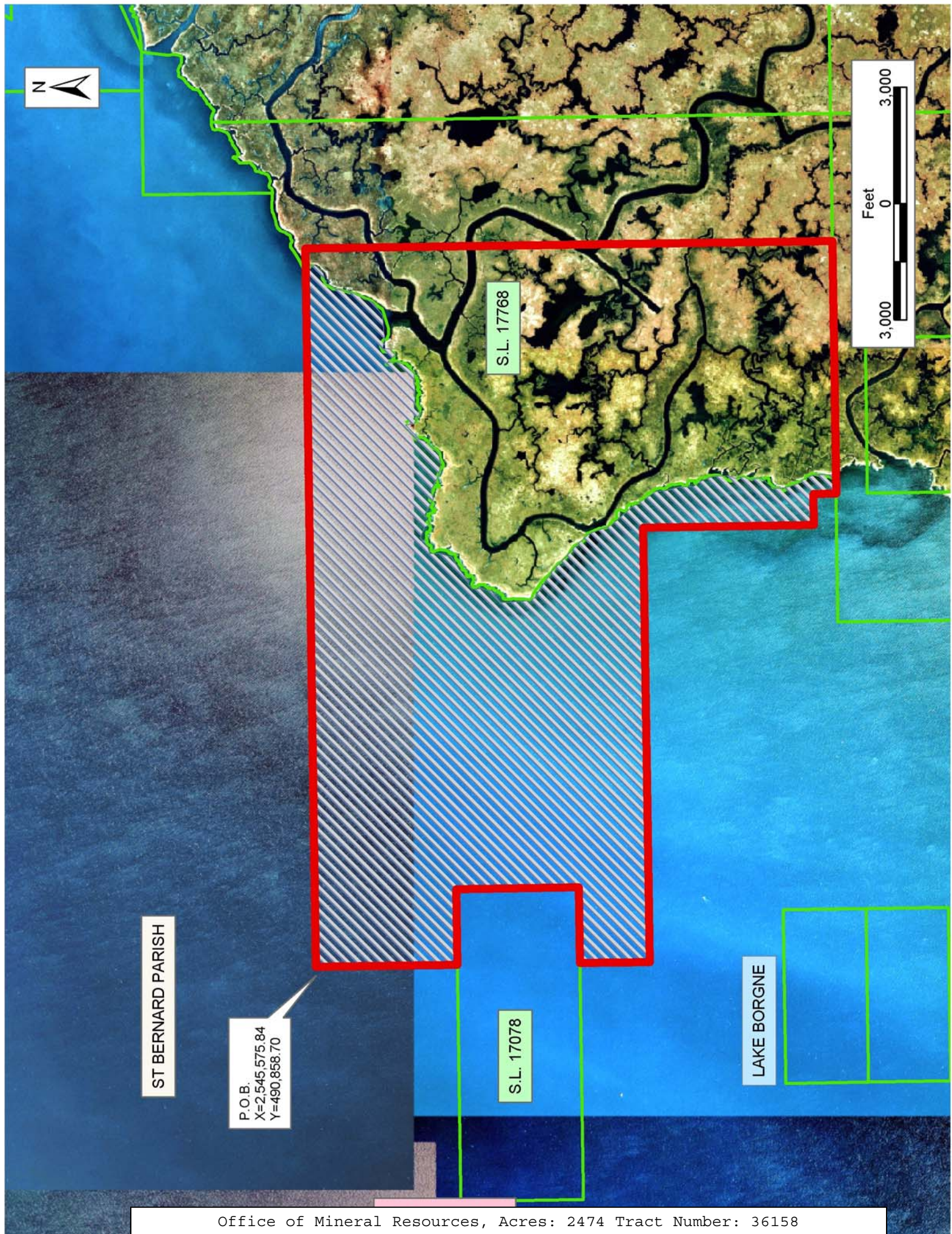
NOTE: The State of Louisiana does hereby reserve, and this lease shall be subject to, the imprescriptible right of surface use in the nature of a servitude in favor of the Department of Natural Resources, including its Offices and Commissions, for the sole purpose of implementing, constructing, servicing and maintaining approved coastal zone management and/or restoration projects. Utilization of any and all rights derived under this lease by the mineral lessee, its agents, successors or assigns, shall not interfere with nor hinder the reasonable surface use by the Department of Natural Resources, its Offices or Commissions, as herein above reserved.

NOTE: The Department of Wildlife and Fisheries has designated certain areas in the coastal waters of the State of Louisiana as Oyster Seed Bed Areas. The exact location of those Seed Bed Areas must be obtained from the Department of Wildlife and Fisheries and any work done under a mineral lease from the State of Louisiana may necessarily be conducted in conformity with the rules and regulations promulgated by the said Department of Wildlife and Fisheries for Oyster Seed Bed Areas.

Applicant: Cypress Energy Corporation

Bidder	Cash Payment	Price/Acre	Rental	Oil	Gas	Other





S.L. 17768

S.L. 17078

ST BERNARD PARISH

LAKE BORGNE

P.O.B.  
X=2,545,575.84  
Y=490,858.70



**TRACT 36159 - Iberia Parish, Louisiana**

All of the lands now or formerly constituting the beds and bottoms of all water bodies of every nature and description the title of which vests in the State of Louisiana, together with all islands arising therein and other lands formed by accretion or by reliction, where allowed by law, excepting tax adjudicated lands, and not presently under mineral lease on March 10, 2004, situated in Iberia Parish, Louisiana, and more particularly described as follows: Beginning at a point having Coordinates of X = 2,002,915.04 and Y = 496,896.48; thence East 5,300.00 feet to a point having Coordinates of X = 2,008,215.04 and Y = 496,896.48; thence South 6,600.00 feet to a point having Coordinates of X = 2,008,215.04 and Y = 490,296.48; thence West 2,954.30 feet to a point having Coordinates of X = 2,005,260.74 and Y = 490,296.48; thence North 2,736.79 feet to a point having Coordinates of X = 2,005,260.74 and Y = 493,033.27; thence West 2,345.70 feet to a point having Coordinates of X = 2,002,915.04 and Y = 493,033.27; thence North 3,863.21 feet to the point of beginning, containing approximately **7 acres**, all as more particularly outlined on a plat on file in the Office of Mineral Resources, Department of Natural Resources. All bearings, distances and coordinates are based on Louisiana Coordinate System of 1927, (North or South Zone), where applicable.

NOTE: The above description of the Tract nominated for lease has been provided and corrected, where required, exclusively by the nomination party. Any mineral lease selected from this Tract and awarded by the Louisiana State Mineral Board shall be without warranty of any kind, either express, implied, or statutory, including, but not limited to, the implied warranties of merchantability and fitness for a particular purpose. Should the mineral lease awarded by the Louisiana State Mineral Board be subsequently modified, cancelled or abrogated due to the existence of conflicting leases, operating agreements, private claims or other future obligations or conditions which may affect all or any portion of the leased Tract, it shall not relieve the Lessee of the obligation to pay any bonus due thereon to the Louisiana State Mineral Board, nor shall the Louisiana State Mineral Board be obligated to refund any consideration paid by the Lessor prior to such modification, cancellation, or abrogation, including, but not limited to, bonuses, rentals and royalties.

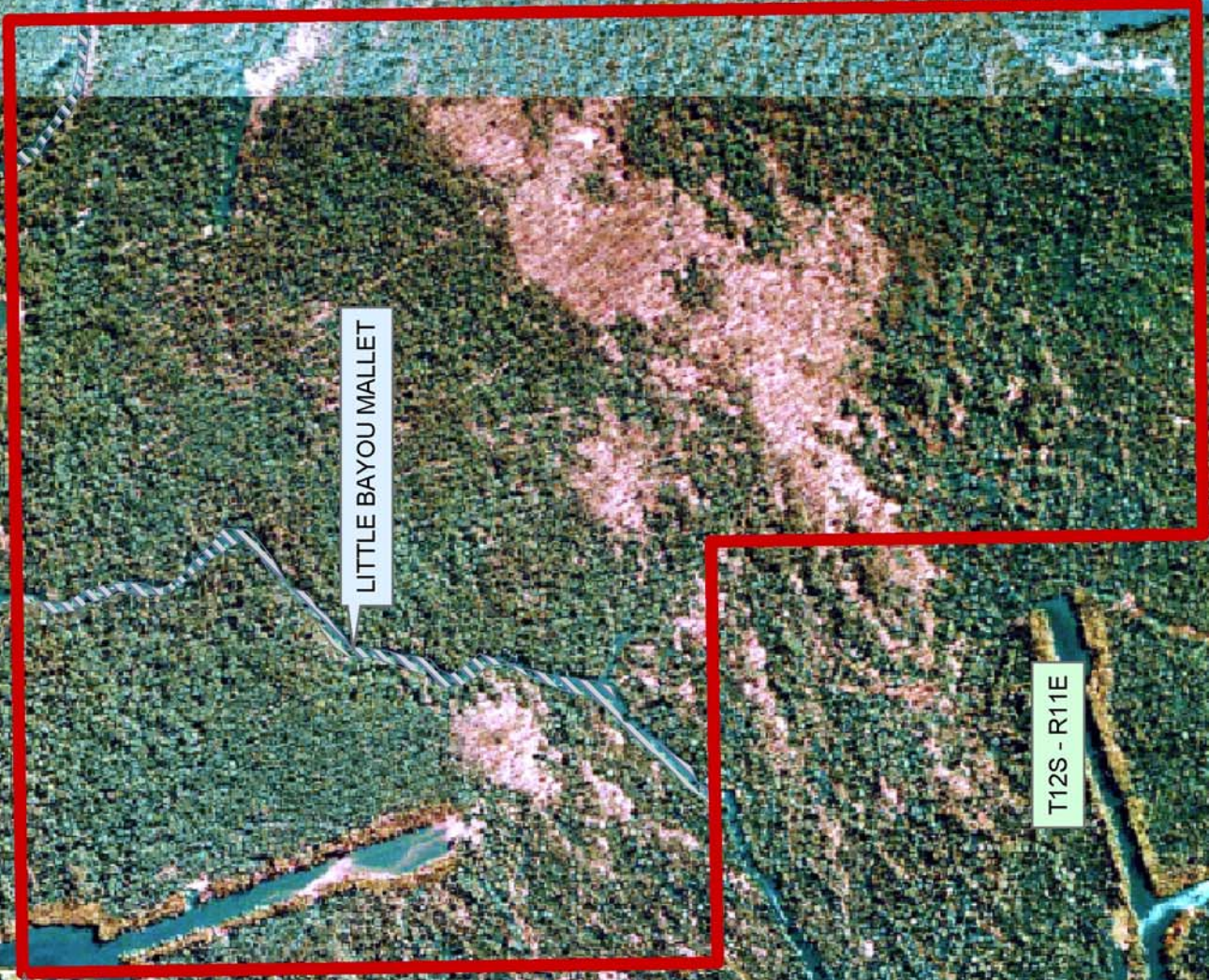
Bidder	Cash Payment	Price/Acre	Rental	Oil	Gas	Other

Applicant: Allen & Kirmse, Ltd.





IBERIA PARISH



LITTLE BAYOU MALLET

T12S - R11E

P.O.B.  
X=2,002,915.04  
Y=496,896.48



**TRACT 36160 - Iberia Parish, Louisiana**

All of the lands now or formerly constituting the beds and bottoms of all water bodies of every nature and description the title of which vests in the State of Louisiana, together with all islands arising therein and other lands formed by accretion or by reliction, where allowed by law, excepting tax adjudicated lands, and not presently under mineral lease on March 10, 2004, situated in Iberia Parish, Louisiana, and more particularly described as follows: Beginning at a point having Coordinates of X = 1,999,860.74 and Y = 493,033.27; thence East 5,400.00 feet to a point having Coordinates of X = 2,005,260.74 and Y = 493,033.27; thence South 5,200.00 feet to a point having Coordinates of X = 2,005,260.74 and Y = 487,833.27; thence West 5,400.00 feet to a point having Coordinates of X = 1,999,860.74 and Y = 487,833.27; thence North 5,200.00 feet to the point of beginning, containing approximately **20 acres**, all as more particularly outlined on a plat on file in the Office of Mineral Resources, Department of Natural Resources. All bearings, distances and coordinates are based on Louisiana Coordinate System of 1927, (North or South Zone), where applicable.

NOTE: The above description of the Tract nominated for lease has been provided and corrected, where required, exclusively by the nomination party. Any mineral lease selected from this Tract and awarded by the Louisiana State Mineral Board shall be without warranty of any kind, either express, implied, or statutory, including, but not limited to, the implied warranties of merchantability and fitness for a particular purpose. Should the mineral lease awarded by the Louisiana State Mineral Board be subsequently modified, cancelled or abrogated due to the existence of conflicting leases, operating agreements, private claims or other future obligations or conditions which may affect all or any portion of the leased Tract, it shall not relieve the Lessee of the obligation to pay any bonus due thereon to the Louisiana State Mineral Board, nor shall the Louisiana State Mineral Board be obligated to refund any consideration paid by the Lessor prior to such modification, cancellation, or abrogation, including, but not limited to, bonuses, rentals and royalties.

Applicant: Allen & Kirmse, Ltd.

Bidder	Cash Payment	Price/Acre	Rental	Oil	Gas	Other





T12S - R11E

IBERIA PARISH

LITTLE BAYOU MALLET

P.O.B.  
X=1,999,860.74  
Y=493,033.27



**TRACT 36161 - St. Bernard Parish, Louisiana**

All of the lands now or formerly constituting the beds and bottoms of all water bodies of every nature and description the title of which vests in the State of Louisiana, together with all islands arising therein and other lands formed by accretion or by reliction, where allowed by law, excepting tax adjudicated lands, and not presently under mineral lease on March 10, 2004, situated in St. Bernard Parish, Louisiana, and more particularly described as follows: Beginning at a point having Coordinates of X = 2,538,836.84 and Y = 474,569.90; thence East 3,568.77 feet to the Southwest corner of State Lease No. 17081 having Coordinates of X = 2,542,405.61 and Y = 474,569.90; thence South 3,469.90 feet to a point having Coordinates of X = 2,542,405.61 and Y = 471,100.00; thence East 11,844.39 feet to a point on the West Line of State Lease No. 17088 having Coordinates of X = 2,554,250.00 and Y = 471,100.00; thence South 3,914.67 feet along the West Line of said State Lease No. 17088 to a point having Coordinates of X = 2,554,250.00 and Y = 467,185.33; thence West 7,379.02 feet to a point on the East Line of State Lease No. 17015 having Coordinates of X = 2,546,870.98 and Y = 467,185.33; thence North 1,165.62 feet to its Northeast corner and a point on the East Line of State Lease No. 17080 having Coordinates of X = 2,546,870.98 and Y = 468,350.95; thence continue North 404.76 feet along the East Line of said State Lease No. 17080 to its Northeast corner having Coordinates of X = 2,546,870.98 and Y = 468,755.71; thence along the boundary of said State Lease No. 17080 the following: West 2,640.00 feet and South 1,570.38 feet to a point on its West Line having Coordinates of X = 2,544,230.98 and Y = 467,185.33; thence North 48 degrees 00 minutes 00 seconds West 17,633.31 feet to a point having Coordinates of X = 2,531,119.50 and Y = 478,984.31; thence North 3,289.77 feet to a point having Coordinates of X = 2,531,119.50 and Y = 482,274.08; thence East 7,717.34 feet to a point having Coordinates of X = 2,538,836.84 and Y = 482,274.08; thence South 7,704.18 feet to the point of beginning, containing approximately **2,472.74 acres**, all as more particularly outlined on a plat on file in the Office of Mineral Resources, Department of Natural Resources. All bearings, distances and coordinates are based on Louisiana Coordinate System of 1927, (North or South Zone), where applicable.

NOTE: The above description of the Tract nominated for lease has been provided and corrected, where required, exclusively by the nomination party. Any mineral lease selected from this Tract and awarded by the Louisiana State Mineral Board shall be without warranty of any kind, either express, implied, or statutory, including, but not limited to, the implied warranties of merchantability and fitness for a particular purpose. Should the mineral lease awarded by the Louisiana State Mineral Board be subsequently modified, cancelled or abrogated due to the existence of conflicting leases, operating agreements, private claims or other future obligations or conditions which may affect all or any portion of the leased Tract, it shall not relieve the Lessee of the obligation to pay any bonus due thereon to the Louisiana State Mineral Board, nor shall the Louisiana State Mineral Board be obligated to refund any consideration



paid by the Lessor prior to such modification, cancellation, or abrogation, including, but not limited to, bonuses, rentals and royalties.

NOTE: The Office of Mineral Resources will require a minimum bonus of \$230 per acre and a minimum royalty of 23%.

NOTE: The State of Louisiana does hereby reserve, and this lease shall be subject to, the imprescriptible right of surface use in the nature of a servitude in favor of the Department of Natural Resources, including its Offices and Commissions, for the sole purpose of implementing, constructing, servicing and maintaining approved coastal zone management and/or restoration projects. Utilization of any and all rights derived under this lease by the mineral lessee, its agents, successors or assigns, shall not interfere with nor hinder the reasonable surface use by the Department of Natural Resources, its Offices or Commissions, as herein above reserved.

NOTE: The Department of Wildlife and Fisheries has designated certain areas in the coastal waters of the State of Louisiana as Oyster Seed Bed Areas. The exact location of those Seed Bed Areas must be obtained from the Department of Wildlife and Fisheries and any work done under a mineral lease from the State of Louisiana may necessarily be conducted in conformity with the rules and regulations promulgated by the said Department of Wildlife and Fisheries for Oyster Seed Bed Areas.

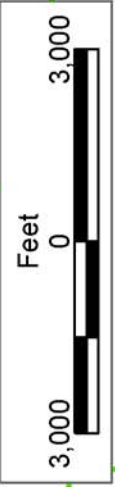
Applicant: Cypress Energy Corporation

Bidder	Cash Payment	Price/Acre	Rental	Oil	Gas	Other



LAKE BORGNE

S.L. 17088



S.L. 17081

P.O.B.  
X=2,538,836.84  
Y=474,569.90

S.L. 17015

S.L. 17080

ST BERNARD PARISH

**TRACT 36162 - St. Bernard Parish, Louisiana**

All of the lands now or formerly constituting the beds and bottoms of all water bodies of every nature and description the title of which vests in the State of Louisiana, together with all islands arising therein and other lands formed by accretion or by reliction, where allowed by law, excepting tax adjudicated lands, and not presently under mineral lease on March 10, 2004, situated in St. Bernard Parish, Louisiana, and more particularly described as follows: Beginning at a point having Coordinates of X = 2,538,836.84 and Y = 474,569.90; thence North 7,704.18 feet to a point having Coordinates of X = 2,538,836.84 and Y = 482,274.08; thence East 17,918.44 feet to a point having Coordinates of X = 2,556,755.28 and Y = 482,274.08; thence South 4,387.68 feet to a point having Coordinates of X = 2,556,755.28 and Y = 477,886.40; thence West 9,884.30 feet to a point on the East Line of State Lease No. 17079, as amended, having Coordinates of X = 2,546,870.98 and Y = 477,886.40; thence along the boundary of said State Lease 17079 the following: North 929.83 feet to its Northeast corner having Coordinates of X = 2,546,870.98 and Y = 478,816.23, and West 4,465.37 feet to its Northwest corner having Coordinates of X = 2,542,405.61 and Y = 478,816.23 and South 2,131.67 feet to its Southwest corner and also the Northwest corner of State Lease No. 17081 having Coordinates of X = 2,542,405.61 and Y = 476,684.56; thence continue South 2,114.66 feet along the West Line of said State Lease No. 17081 to its Southwest corner having Coordinates of X = 2,542,405.61 and Y = 474,569.90; thence West 3,568.77 feet to the point of beginning, containing approximately **1,981.27 acres**, all as more particularly outlined on a plat on file in the Office of Mineral Resources, Department of Natural Resources. All bearings, distances and coordinates are based on Louisiana Coordinate System of 1927, (North or South Zone), where applicable.

NOTE: The above description of the Tract nominated for lease has been provided and corrected, where required, exclusively by the nomination party. Any mineral lease selected from this Tract and awarded by the Louisiana State Mineral Board shall be without warranty of any kind, either express, implied, or statutory, including, but not limited to, the implied warranties of merchantability and fitness for a particular purpose. Should the mineral lease awarded by the Louisiana State Mineral Board be subsequently modified, cancelled or abrogated due to the existence of conflicting leases, operating agreements, private claims or other future obligations or conditions which may affect all or any portion of the leased Tract, it shall not relieve the Lessee of the obligation to pay any bonus due thereon to the Louisiana State Mineral Board, nor shall the Louisiana State Mineral Board be obligated to refund any consideration paid by the Lessor prior to such modification, cancellation, or abrogation, including, but not limited to, bonuses, rentals and royalties.

NOTE: The Office of Mineral Resources will require a minimum bonus of \$230 per acre and a minimum royalty of 23%.

NOTE: The State of Louisiana does hereby reserve, and this lease shall be subject to, the imprescriptible right of surface use in the nature of a servitude in favor of the Department of Natural Resources, including its Offices and Commissions, for the sole purpose of implementing, constructing, servicing and maintaining approved coastal zone management and/or restoration projects. Utilization of any and all rights derived under this lease by the mineral lessee, its agents, successors or assigns, shall not interfere with nor hinder the reasonable surface use by the Department of Natural Resources, its Offices or Commissions, as herein above reserved.

NOTE: The Department of Wildlife and Fisheries has designated certain areas in the coastal waters of the State of Louisiana as Oyster Seed Bed Areas. The exact location of those Seed Bed Areas must be obtained from the Department of Wildlife and Fisheries and any work done under a mineral lease from the State of Louisiana may necessarily be conducted in conformity with the rules and regulations promulgated by the said Department of Wildlife and Fisheries for Oyster Seed Bed Areas.

Applicant: Cypress Energy Corporation

Bidder	Cash Payment	Price/Acre	Rental	Oil	Gas	Other



