

**TRACT 35342 - Portion of Block 16, Main Pass Area, Revised, Plaquemines Parish, Louisiana**

All of the lands now or formerly constituting the beds and bottoms of all water bodies of every nature and description, and all islands and other lands formed by accretion, where allowed by law, or by reliction, and excepting tax adjudicated lands, belonging to the State of Louisiana and not presently under mineral lease on March 12, 2003, situated in Plaquemines Parish, Louisiana, and more particularly described as follows: Beginning at the Northeast corner of Block 16, Main Pass Area, Revised, having Coordinates of X = 2,635,350.00 and Y = 351,830.00; thence South 14,750.00 feet along the East line of said Block 16 to its Southeast corner having Coordinates of X = 2,635,350.00 and Y = 337,080.00; thence West 7,375.00 feet along the South line of said Block 16 to a point having Coordinates of X = 2,627,975.00 and Y = 337,080.00; thence North 11,188.12 feet to a point on the South line of State Lease No. 17622 having Coordinates of X = 2,627,975.00 and Y = 348,268.12; thence along the boundary of said State Lease No. 17622 the following courses: South 76 degrees 27 minutes 05 seconds East 4,345.94 feet, North 31 degrees 39 minutes 46 seconds East 2,038.41 feet, North 63 degrees 26 minutes 06 seconds West 5,534.27 feet, and South 22 degrees 42 minutes 31 seconds West 893.68 feet to a point on the West line of said State Lease No. 17622 having Coordinates of X = 2,627,975.00 and Y = 350,635.60; thence North 1,194.40 feet to a point on the North line of said Block 16 having Coordinates of X = 2,627,975.00 and Y = 351,830.00; thence East 7,375.00 feet to the point of beginning, containing approximately **2,200.10 acres**, all as more particularly outlined on a plat on file in the Office of Mineral Resources, Department of Natural Resources, as provided by the applicant. All bearings, distances and coordinates are based on Louisiana Coordinate System of 1927, (North or South Zone), where applicable.

NOTE: The above description of the Tract nominated for lease has been provided and corrected, where required, exclusively by the nomination party. Any mineral lease selected from this Tract and awarded by the Louisiana State Mineral Board shall be without warranty of any kind, either express, implied, or statutory, including, but not limited to, the implied warranties of merchantability and fitness for a particular purpose. Should the mineral lease awarded by the Louisiana State Mineral Board be subsequently modified, cancelled or abrogated due to the existence of conflicting leases, operating agreements, private claims or other future obligations or conditions which may affect all or any portion of the leased Tract, it shall not relieve the Lessee of the obligation to pay any bonus due thereon to the Louisiana State Mineral Board, nor shall the Louisiana State Mineral Board be obligated to refund any consideration paid by the Lessor prior to such modification, cancellation, or abrogation, including, but not limited to, bonuses, rentals and royalties.

NOTE: The State of Louisiana does hereby reserve, and this lease shall be subject to, the imprescriptible right of surface use in the nature of a servitude in favor of the Department of Natural Resources, including its Offices and Commissions, for the sole purpose of implementing,

constructing, servicing and maintaining approved coastal zone management and/or restoration projects. Utilization of any and all rights derived under this lease by the mineral lessee, its agents, successors or assigns, shall not interfere with nor hinder the reasonable surface use by the Department of Natural Resources, its Offices or Commissions, as herein above reserved.

Applicant: Palmer & Palmer

Bidder	Cash Payment	Price / Acre	Rental	Oil	Gas	Other

SL 16172

Bik. 10

Bik. 9

St. Bernard Parish  
Plaquemines Parish

///

Bik. 16

P. O. B.  
X=2,635,350.00  
Y= 351,830.00

SL 17622

SL 16894

SL 17623

Bik. 15

SL  
17621

SL  
17624

Bik. 16

TR 35342  
2,200.10 ± ACS.  
MAR., 2003

Bik. 17

SL 16895

MAIN PASS AREA, REVISED

BRETON SOUND AREA

SL 17301

GULF OF MEXICO

SL 4708,  
As Amended

Plaquemines Parish, Louisiana

3000' 0' 3000'

NAD 27  
LAMBERT LA. SOUTH ZONE

**TRACT 35343 - Portion of Block 17, Breton Sound Area, Plaquemines Parish, Louisiana**

All of the lands now or formerly constituting the beds and bottoms of all water bodies of every nature and description, and all islands and other lands formed by accretion, where allowed by law, or by reliction, and excepting tax adjudicated lands, belonging to the State of Louisiana and not presently under mineral lease on March 12, 2003, situated in Plaquemines Parish, Louisiana, and more particularly described as follows: Beginning at a point on the East line of Block 17, Breton Sound Area, having Coordinates of X = 2,650,100.00 and Y = 344,455.00; thence West 9,954.51 feet to the most Southerly Southeast corner of State Lease No. 16894; also being the most Northerly Northeast corner of State Lease No. 16895 having Coordinates of X = 2,640,145.49 and Y = 344,455.00; thence along the boundary of said State Lease No. 16894 the following courses: North 07 degrees 08 minutes 14 seconds East 3,537.41 feet, South 88 degrees 47 minutes 25 seconds East 5,921.32 feet and North 29 degrees 41 minutes 27 seconds West 4,593.01 feet to the most Northerly Northeast corner of said State Lease No. 16894, also being a point on the North line of said Block 17 having Coordinates of X = 2,644,230.00 and Y = 351,830.00; thence East 5,870.00 feet along the North line of said Block 17 to its Northeast corner having Coordinates of X = 2,650,100.00 and Y = 351,830.00; thence South 7,375.00 feet along the East line of said Block 17 to the point of beginning, containing approximately **1,199.09 acres**, all as more particularly outlined on a plat on file in the Office of Mineral Resources, Department of Natural Resources, as provided by the applicant. All bearings, distances and coordinates are based on Louisiana Coordinate System of 1927, (North or South Zone), where applicable.

NOTE: The above description of the Tract nominated for lease has been provided and corrected, where required, exclusively by the nomination party. Any mineral lease selected from this Tract and awarded by the Louisiana State Mineral Board shall be without warranty of any kind, either express, implied, or statutory, including, but not limited to, the implied warranties of merchantability and fitness for a particular purpose. Should the mineral lease awarded by the Louisiana State Mineral Board be subsequently modified, cancelled or abrogated due to the existence of conflicting leases, operating agreements, private claims or other future obligations or conditions which may affect all or any portion of the leased Tract, it shall not relieve the Lessee of the obligation to pay any bonus due thereon to the Louisiana State Mineral Board, nor shall the Louisiana State Mineral Board be obligated to refund any consideration paid by the Lessor prior to such modification, cancellation, or abrogation, including, but not limited to, bonuses, rentals and royalties.

NOTE: It appears, according to our records, that a portion of this Tract is located within the restrictive safety fairway area as set out by the Corps of Engineers, U.S. Army and/or the restrictive anchorage area as set out by the U.S. Coast Guard.

NOTE: The State of Louisiana does hereby reserve, and this lease shall be subject to, the imprescriptible right of surface use in the nature of a servitude in favor of the Department of Natural Resources, including its Offices and Commissions, for the sole purpose of implementing, constructing, servicing and maintaining approved coastal zone management and/or restoration projects. Utilization of any and all rights derived under this lease by the mineral lessee, its agents, successors or assigns, shall not interfere with nor hinder the reasonable surface use by the Department of Natural Resources, its Offices or Commissions, as herein above reserved.

Applicant: Palmer & Palmer

Bidder	Cash Payment	Price / Acre	Rental	Oil	Gas	Other

114

St. Bernard Parish  
Plaquemines Parish

Bik. 16

Bik. 15

SL  
16593

SL 16894

SL 16594

TR 35343  
1,199.09 ± ACS.  
MAR., 2003

Bik. 18

P. O. B.  
X=2,650,100.00  
Y= 344,455.00

Bik. 17

GULF OF MEXICO

SL 16895

SL 16544

SL 17301

SL 1227, As Amended

Bik. 31

Bik. 32

MAIN PASS AREA, REVISED  
BRETON SOUND AREA

NAD 27 - LAMBERT LA. SOUTH ZONE

Plaquemines Parish, Louisiana

3000' 0' 3000'

**TRACT 35344 - Portion of Block 17, Breton Sound Area, Plaquemines Parish, Louisiana**

All of the lands now or formerly constituting the beds and bottoms of all water bodies of every nature and description, and all islands and other lands formed by accretion, where allowed by law, or by reliction, and excepting tax adjudicated lands, belonging to the State of Louisiana and not presently under mineral lease on March 12, 2003, situated in Plaquemines Parish, Louisiana, and more particularly described as follows: Beginning at a point on the East line of Block 17, Breton Sound Area, having Coordinates of X = 2,650,100.00 and Y = 344,455.00; thence South 7,375.00 feet along the East line of said Block 17 to its Southeast corner having Coordinates of X = 2,650,100.00 and Y = 337,080.00; thence West 4,230.00 feet along the South line of said Block 17 to a point, also being the most Southerly Southeast corner of State Lease No. 16895 having Coordinates of X = 2,645,870.00 and Y = 337,080.00; thence along said State Lease No. 16895 the following courses: North 01 degrees 58 minutes 14 seconds East 2,181.29 feet, West 6,450.00 feet and North 07 degrees 08 minutes 14 seconds East 5,235.57 feet to the most Northerly Northeast corner of said State Lease No. 16895; also being the most Southerly Southeast corner of State Lease No. 16894 having Coordinates of X = 2,640,145.49 and Y = 344,455.00; thence East 9,954.51 feet to the point of beginning, containing approximately **1,435.79 acres**, all as more particularly outlined on a plat on file in the Office of Mineral Resources, Department of Natural Resources, as provided by the applicant. All bearings, distances and coordinates are based on Louisiana Coordinate System of 1927, (North or South Zone), where applicable.

NOTE: The above description of the Tract nominated for lease has been provided and corrected, where required, exclusively by the nomination party. Any mineral lease selected from this Tract and awarded by the Louisiana State Mineral Board shall be without warranty of any kind, either express, implied, or statutory, including, but not limited to, the implied warranties of merchantability and fitness for a particular purpose. Should the mineral lease awarded by the Louisiana State Mineral Board be subsequently modified, cancelled or abrogated due to the existence of conflicting leases, operating agreements, private claims or other future obligations or conditions which may affect all or any portion of the leased Tract, it shall not relieve the Lessee of the obligation to pay any bonus due thereon to the Louisiana State Mineral Board, nor shall the Louisiana State Mineral Board be obligated to refund any consideration paid by the Lessor prior to such modification, cancellation, or abrogation, including, but not limited to, bonuses, rentals and royalties.

NOTE: It appears, according to our records, that a portion of this Tract is located within the restrictive safety fairway area as set out by the Corps of Engineers, U.S. Army and/or the restrictive anchorage area as set out by the U.S. Coast Guard.

NOTE: The State of Louisiana does hereby reserve, and this lease shall be subject to, the imprescriptible right of surface use in the nature of a

servitude in favor of the Department of Natural Resources, including its Offices and Commissions, for the sole purpose of implementing, constructing, servicing and maintaining approved coastal zone management and/or restoration projects. Utilization of any and all rights derived under this lease by the mineral lessee, its agents, successors or assigns, shall not interfere with nor hinder the reasonable surface use by the Department of Natural Resources, its Offices or Commissions, as herein above reserved.

Applicant: Palmer & Palmer

Bidder	Cash Payment	Price / Acre	Rental	Oil	Gas	Other



MAIN PASS AREA, REVISED

BRETON SOUND AREA

SL 16894 Blk. 17

GULF OF MEXICO

SL 16594

Blk. 18

P. O. B.  
X=2,650,100.00  
Y= 344,455.00

TR 35344  
1,435.79 ± ACS.  
MAR., 2003

SL 16895

SL 16544

SL 17301

Blk. 32

SL 1227, As Amended

Blk. 31

Plaquemines Parish, Louisiana

3000' 0' 3000'

NAD 27  
LAMBERT LA. SOUTH ZONE

**TRACT 35345 - Portion of Block 32, Breton Sound Area, Plaquemines Parish, Louisiana**

All of the lands now or formerly constituting the beds and bottoms of all water bodies of every nature and description, and all islands and other lands formed by accretion, where allowed by law, or by reliction, and excepting tax adjudicated lands, belonging to the State of Louisiana and not presently under mineral lease on March 12, 2003, situated in Plaquemines Parish, Louisiana, and more particularly described as follows: Beginning at the Southeast corner of Block 32, Breton Sound Area, having Coordinates of X = 2,650,100.00 and Y = 322,330.00; thence West 14,750.00 feet along the South line of said Block 32 to its Southwest corner having Coordinates of X = 2,635,350.00 and Y = 322,330.00; thence North 3,687.50 feet along the West line of said Block 32 to a point, also being the Southwest corner of State Lease No. 1227, as amended, having Coordinates of X = 2,635,350.00 and Y = 326,017.50; thence East 11,250.00 feet along the South line of said State Lease No. 1227 to its Southeast corner having Coordinates of X = 2,646,600.00 and Y = 326,017.50; thence North 11,062.50 feet along the East line of said State Lease No. 1227 to its Northeast corner, also being a point on the North line of said Block 32 having Coordinates of X = 2,646,600.00 and Y = 337,080.00; thence East 3,500.00 feet along the North line of said Block 32 to its Northeast corner having Coordinates of X = 2,650,100.00 and Y = 337,080.00; thence South 14,750.00 feet along the East line of said Block 32 to the point of beginning, containing approximately **2,137.50 acres**, all as more particularly outlined on a plat on file in the Office of Mineral Resources, Department of Natural Resources, as provided by the applicant. All bearings, distances and coordinates are based on Louisiana Coordinate System of 1927, (North or South Zone), where applicable.

NOTE: The above description of the Tract nominated for lease has been provided and corrected, where required, exclusively by the nomination party. Any mineral lease selected from this Tract and awarded by the Louisiana State Mineral Board shall be without warranty of any kind, either express, implied, or statutory, including, but not limited to, the implied warranties of merchantability and fitness for a particular purpose. Should the mineral lease awarded by the Louisiana State Mineral Board be subsequently modified, cancelled or abrogated due to the existence of conflicting leases, operating agreements, private claims or other future obligations or conditions which may affect all or any portion of the leased Tract, it shall not relieve the Lessee of the obligation to pay any bonus due thereon to the Louisiana State Mineral Board, nor shall the Louisiana State Mineral Board be obligated to refund any consideration paid by the Lessor prior to such modification, cancellation, or abrogation, including, but not limited to, bonuses, rentals and royalties.

NOTE: The State of Louisiana does hereby reserve, and this lease shall be subject to, the imprescriptible right of surface use in the nature of a servitude in favor of the Department of Natural Resources, including its Offices and Commissions, for the sole purpose of implementing, constructing, servicing and maintaining approved coastal zone management

and/or restoration projects. Utilization of any and all rights derived under this lease by the mineral lessee, its agents, successors or assigns, shall not interfere with nor hinder the reasonable surface use by the Department of Natural Resources, its Offices or Commissions, as herein above reserved.

Applicant: Palmer & Palmer

Bidder	Cash Payment	Price / Acre	Rental	Oil	Gas	Other

Bik. 16

Bik. 17  
SL 16895

<sup>120</sup>  
Bik. 18  
SL 16544

SL 17301

SL 4708  
As Amended

Bik. 21

Bik. 32

SL 1227, As Amended

GULF OF MEXICO

SL 15536

MAIN PASS AREA, REVISED  
BRETON SOUND AREA

Bik. 31

TR 35345  
2,137.50 ± ACS.  
MAR., 2003

SL 4407

SL  
16935

P. O. B.  
X=2,650,100.00  
Y= 322,330.00

SL 4458  
Bik. 34

Bik. 33

SL 17385

SL 17384

SL 16298

SL 14217

NAD 27 - LAMBERT LA. SOUTH ZONE

Plaquemines Parish, Louisiana

3000' 0' 3000'

**TRACT 35346 - Portion of Block 33, Breton Sound Area, Plaquemines Parish, Louisiana**

All of the lands now or formerly constituting the beds and bottoms of all water bodies of every nature and description, and all islands and other lands formed by accretion, where allowed by law, or by reliction, and excepting tax adjudicated lands, belonging to the State of Louisiana and not presently under mineral lease on March 12, 2003, situated in Plaquemines Parish, Louisiana, and more particularly described as follows: Beginning at the Northwest corner of Block 33, Breton Sound Area, having Coordinates of X = 2,635,350.00 and Y = 322,330.00; thence East 7,375.00 feet along the North line of said Block 33 to a point having Coordinates of X = 2,642,725.00 and Y = 322,330.00; thence South 14,750.00 feet to a point on the South line of said Block 33 having Coordinates of X = 2,642,725.00 and Y = 307,580.00; thence West 7,375.00 feet along the South line of said Block 33 to its Southwest corner having Coordinates of X = 2,635,350.00 and Y = 307,580.00; thence North 8,492.86 feet along the West line of said Block 33 to a point, also being the Southwest corner of State Lease No. 17385 having Coordinates of X = 2,635,350.00 and Y = 316,072.86; thence along the boundary of said State Lease No. 17385 the following courses: North 50 degrees 07 minutes 57 seconds East 5,081.24 feet and North 56 degrees 18 minutes 36 seconds West 4,687.22 feet to the Northwest corner of said State Lease No. 17385, also being a point on the West line of said Block 33 having Coordinates of X = 2,635,350.00 and Y = 321,930.00; thence North 400.00 feet along the West line of said Block 33 to the point of beginning, containing approximately **2,235.07 acres**, all as more particularly outlined on a plat on file in the Office of Mineral Resources, Department of Natural Resources, as provided by the applicant. All bearings, distances and coordinates are based on Louisiana Coordinate System of 1927, (North or South Zone), where applicable.

NOTE: The above description of the Tract nominated for lease has been provided and corrected, where required, exclusively by the nomination party. Any mineral lease selected from this Tract and awarded by the Louisiana State Mineral Board shall be without warranty of any kind, either express, implied, or statutory, including, but not limited to, the implied warranties of merchantability and fitness for a particular purpose. Should the mineral lease awarded by the Louisiana State Mineral Board be subsequently modified, cancelled or abrogated due to the existence of conflicting leases, operating agreements, private claims or other future obligations or conditions which may affect all or any portion of the leased Tract, it shall not relieve the Lessee of the obligation to pay any bonus due thereon to the Louisiana State Mineral Board, nor shall the Louisiana State Mineral Board be obligated to refund any consideration paid by the Lessor prior to such modification, cancellation, or abrogation, including, but not limited to, bonuses, rentals and royalties.

NOTE: The State of Louisiana does hereby reserve, and this lease shall be subject to, the imprescriptible right of surface use in the nature of a servitude in favor of the Department of Natural Resources, including its Offices and Commissions, for the sole purpose of implementing,

constructing, servicing and maintaining approved coastal zone management and/or restoration projects. Utilization of any and all rights derived under this lease by the mineral lessee, its agents, successors or assigns, shall not interfere with nor hinder the reasonable surface use by the Department of Natural Resources, its Offices or Commissions, as herein above reserved.

Applicant: Palmer & Palmer

Bidder	Cash Payment	Price / Acre	Rental	Oil	Gas	Other

SL 1227, As Amended

123

Bik. 21

Bik. 32

SL  
16935

P. O. B.  
X=2,635,350.00  
Y=322,330.00

SL 17385

SL 15985,  
As Amended

SL 17384

Bik. 26

TR 35346  
2,235.07 ± ACS.  
MAR., 2003

Bik. 33

SL 16298,  
As Amended

SL 16795,  
As Amended

SL 16937

SL 16936

MAIN PASS AREA, REVISED  
BRETON SOUND AREA

Bik. 31

Bik. 48

SL 16796

GULF OF MEXICO

Plaquemines Parish, Louisiana

3000' 0' 3000'

NAD 27 - LAMBERT LA. SOUTH ZONE



**TRACT 35347 - Portion of Block 33, Breton Sound Area, Plaquemines Parish, Louisiana**

All of the lands now or formerly constituting the beds and bottoms of all water bodies of every nature and description, and all islands and other lands formed by accretion, where allowed by law, or by reliction, and excepting tax adjudicated lands, belonging to the State of Louisiana and not presently under mineral lease on March 12, 2003, situated in Plaquemines Parish, Louisiana, and more particularly described as follows: Beginning at the Northeast corner of Block 33, Breton Sound Area, having Coordinates of X = 2,650,100.00 and Y = 322,330.00; thence South 7,514.46 feet along the East line of said Block 33 to a point, also being the Northeast corner of State Lease No. 16298, as amended, having Coordinates of X = 2,650,100.00 and Y = 314,815.54; thence along the boundary of said State Lease No. 16298 the following courses: West 1,022.05 feet and South 2,035.54 feet to the Southwest corner of said State Lease No. 16298, also being a point on the North line of State Lease No. 16795, as amended, having Coordinates of X = 2,649,077.95 and Y = 312,780.00; thence along the boundary of said State Lease No. 16795 the following courses: West 927.95 feet, South 4,204.21 feet and East 1,950.00 feet to the Southeast corner of said State Lease No. 16795, also being a point on the East line of said Block 33 having Coordinates of X = 2,650,100.00 and Y = 308,575.79; thence South 995.79 feet along the East line of said Block 33 to its Southeast corner having Coordinates of X = 2,650,100.00 and Y = 307,580.00; thence West 7,375.00 feet along the South line of said Block 33 to a point having Coordinates of X = 2,642,725.00 and Y = 307,580.00; thence North 14,750.00 feet to a point on the North line of said Block 33 having Coordinates of X = 2,642,725.00 and Y = 322,330.00; thence East 7,375.00 feet along the North line of said Block 33 to the point of beginning, containing approximately **2,261.31 acres**, all as more particularly outlined on a plat on file in the Office of Mineral Resources, Department of Natural Resources, as provided by the applicant. All bearings, distances and coordinates are based on Louisiana Coordinate System of 1927, (North or South Zone), where applicable.

NOTE: The above description of the Tract nominated for lease has been provided and corrected, where required, exclusively by the nomination party. Any mineral lease selected from this Tract and awarded by the Louisiana State Mineral Board shall be without warranty of any kind, either express, implied, or statutory, including, but not limited to, the implied warranties of merchantability and fitness for a particular purpose. Should the mineral lease awarded by the Louisiana State Mineral Board be subsequently modified, cancelled or abrogated due to the existence of conflicting leases, operating agreements, private claims or other future obligations or conditions which may affect all or any portion of the leased Tract, it shall not relieve the Lessee of the obligation to pay any bonus due thereon to the Louisiana State Mineral Board, nor shall the Louisiana State Mineral Board be obligated to refund any consideration paid by the Lessor prior to such modification, cancellation, or abrogation, including, but not limited to, bonuses, rentals and royalties.



NOTE: The State of Louisiana does hereby reserve, and this lease shall be subject to, the imprescriptible right of surface use in the nature of a servitude in favor of the Department of Natural Resources, including its Offices and Commissions, for the sole purpose of implementing, constructing, servicing and maintaining approved coastal zone management and/or restoration projects. Utilization of any and all rights derived under this lease by the mineral lessee, its agents, successors or assigns, shall not interfere with nor hinder the reasonable surface use by the Department of Natural Resources, its Offices or Commissions, as herein above reserved.

Applicant: Palmer & Palmer

Bidder	Cash Payment	Price / Acre	Rental	Oil	Gas	Other

SL 1227, As Amended

126

Bik. 32

Bik. 31

SL 4407

P. O. B.  
X=2,650, 100.00  
Y= 322, 330.00

SL 4458

SL 17385

SL 17384

Bik. 33

TR 35347  
2,261.31 ± ACS.  
MAR., 2003

SL 14217, As Amended  
Bik. 34

SL 16298,  
As Amended

SL 14216,  
As Amended

SL 14560,  
As Amended

SL 16795,  
As Amended

Bik. 48

GULF OF MEXICO

SL 16796

Bik. 47

MAIN PASS AREA, REVISED  
BRETON SOUND AREA

NAD 27 - LAMBERT L.A. SOUTH ZONE

Plaquemines Parish, Louisiana

3000' 0' 3000'

**TRACT 35348 - Portion of Block 31, Breton Sound Area, Plaquemines Parish, Louisiana**

All of the lands now or formerly constituting the beds and bottoms of all water bodies of every nature and description, and all islands and other lands formed by accretion, where allowed by law, or by reliction, and excepting tax adjudicated lands, belonging to the State of Louisiana and not presently under mineral lease on March 12, 2003, situated in Plaquemines Parish, Louisiana, and more particularly described as follows: Beginning at the Northwest corner of Block 31, Breton Sound Area, having Coordinates of X = 2,650,100.00 and Y = 337,080.00; thence East 8,450.00 feet along the North line of said Block 31 to a point, also being the most Northerly Northwest corner of State Lease No. 16659 having Coordinates of X = 2,658,550.00 and Y = 337,080.00; thence along the boundary of said State Lease No. 16659 the following courses: South 64 degrees 58 minutes 59 seconds West 3,310.59 feet, South 1,600.00 feet and South 56 degrees 18 minutes 36 seconds East 2,313.56 feet to a point on the boundary of said State Lease No. 16659 having Coordinates of X = 2,657,475.00 and Y = 332,796.67; thence South 6,466.67 feet to the Northwest corner of State Lease No. 4865, also being the Northeast corner of State Lease No. 4407, as amended, having Coordinates of X = 2,657,475.00 and Y = 326,330.00; thence West 7,375.00 feet along the North line of said State Lease No. 4407 to its Northwest corner, also being a point on the West line of said Block 31 having Coordinates of X = 2,650,100.00 and Y = 326,330.00; thence North 10,750.00 feet along the West line of said Block 31 to the point of beginning, containing approximately **1,707.32 acres**, all as more particularly outlined on a plat on file in the Office of Mineral Resources, Department of Natural Resources, as provided by the applicant. All bearings, distances and coordinates are based on Louisiana Coordinate System of 1927, (North or South Zone), where applicable.

NOTE: The above description of the Tract nominated for lease has been provided and corrected, where required, exclusively by the nomination party. Any mineral lease selected from this Tract and awarded by the Louisiana State Mineral Board shall be without warranty of any kind, either express, implied, or statutory, including, but not limited to, the implied warranties of merchantability and fitness for a particular purpose. Should the mineral lease awarded by the Louisiana State Mineral Board be subsequently modified, cancelled or abrogated due to the existence of conflicting leases, operating agreements, private claims or other future obligations or conditions which may affect all or any portion of the leased Tract, it shall not relieve the Lessee of the obligation to pay any bonus due thereon to the Louisiana State Mineral Board, nor shall the Louisiana State Mineral Board be obligated to refund any consideration paid by the Lessor prior to such modification, cancellation, or abrogation, including, but not limited to, bonuses, rentals and royalties.

NOTE: It appears, according to our records, that a portion of this Tract is located within the restrictive safety fairway area as set out by the Corps of Engineers, U.S. Army and/or the restrictive anchorage area as set out by the U.S. Coast Guard.

NOTE: The State of Louisiana does hereby reserve, and this lease shall be subject to, the imprescriptible right of surface use in the nature of a servitude in favor of the Department of Natural Resources, including its Offices and Commissions, for the sole purpose of implementing, constructing, servicing and maintaining approved coastal zone management and/or restoration projects. Utilization of any and all rights derived under this lease by the mineral lessee, its agents, successors or assigns, shall not interfere with nor hinder the reasonable surface use by the Department of Natural Resources, its Offices or Commissions, as herein above reserved.

Applicant: Palmer & Palmer

Bidder	Cash Payment	Price / Acre	Rental	Oil	Gas	Other

Bik. 17

SL 16895

SL 16544

Bik. 18

SL 16658

129

SL 1227,  
As Amended

Bik. 32

P. O. B.  
X=2,650,100.00  
Y= 337,080.00

SL 16659

SL 16434

TR 35348  
1,707.32 ± ACS.  
MAR., 2003

Bik. 31

SL 4407

SL 4865

SL  
17457

Bik. 33

SL 4458

Bik. 34

SL 5049

SL 14559  
As Amended

BRETON SOUND AREA  
GULF OF MEXICO

Plaquemines Parish, Louisiana

3000' 0' 3000'

NAD 27 LAMBERT LA. SOUTH ZONE

**TRACT 35349 - Portion of Block 34, Breton Sound Area, Plaquemines Parish, Louisiana**

All of the lands now or formerly constituting the beds and bottoms of all water bodies of every nature and description, and all islands and other lands formed by accretion, where allowed by law, or by reliction, and excepting tax adjudicated lands, belonging to the State of Louisiana and not presently under mineral lease on March 12, 2003, situated in Plaquemines Parish, Louisiana, and more particularly described as follows: Beginning at the Northwest corner of Block 34, Breton Sound Area, having Coordinates of X = 2,650,100.00 and Y = 322,330.00; thence East 996.66 feet along the North line of said Block 34 to a point, also being the Northwest corner of State Lease No. 4458, as amended, having Coordinates of X = 2,651,096.66 and Y = 322,330.00; thence along the boundary of said State Lease No. 4458 the following courses: South 00 degrees 02 minutes 21 seconds East 3,000.00 feet and East 6,376.29 feet to the Southeast corner of said State Lease No. 4458, also being the Southwest corner of State Lease No. 5049, as amended, having Coordinates of X = 2,657,475.00 and Y = 319,330.00; thence along the boundary of said State Lease No. 5049 the following courses: East 1,500.00 feet and North 29 degrees 32 minutes 20 seconds East 2,552.76 feet to a point on the East boundary line of said State Lease No. 5049, also being the most Westerly Northwest corner of State Lease No. 14559, as amended, having Coordinates of X = 2,660,233.55 and Y = 321,550.96; thence South 2,220.96 feet along the West line of said State Lease No. 14559 to its Southwest corner, also being the most Westerly Northwest corner of State Lease No. 14217, as amended, having Coordinates of X = 2,660,233.55 and Y = 319,330.00; thence along the boundary of said State Lease No. 14217 the following courses: South 3,493.52 feet and East 4,616.45 feet to its Southeast corner, also being a point on the East line of said Block 34 having Coordinates of X = 2,664,850.00 and Y = 315,836.48; thence South 8,256.48 feet along the East line of said Block 34 to its Southeast corner having Coordinates of X = 2,664,850.00 and Y = 307,580.00; thence West 10,160.00 feet along the South line of said Block 34 to a point having Coordinates of X = 2,654,690.00 and Y = 307,580.00; thence North 995.79 feet to the Southeast corner of State Lease No. 14560, as amended, having Coordinates of X = 2,654,690.00 and Y = 308,575.79; thence North 2,691.71 feet along the East line of said State Lease No. 14560 to its Northeast corner, also being the Southeast corner of State Lease No. 14216, as amended, having Coordinates of X = 2,654,690.00 and Y = 311,267.50; thence along the boundary of said State Lease No. 14216 the following courses: North 1,750.00 feet and North 48 degrees 50 minutes 59 seconds East 2,944.37 feet to the Northeast corner of said State Lease No. 14216, also being the Southeast corner of State Lease No. 14217, as amended, having Coordinates of X = 2,656,907.07 and Y = 314,955.00; thence along the boundary of said State Lease No. 14217 the following courses: North 48 degrees 50 minutes 59 seconds East 2,447.49 feet, North 650.00 feet and West 8,650.00 feet to the Northwest corner of said State Lease No. 14217, also being a point on the West line of said Block 34 having Coordinates of X = 2,650,100.00 and Y = 317,215.54; thence North 5,114.46 feet along the West line of said Block 34 to the point of beginning, containing approximately **2,468.02 acres**, all

as more particularly outlined on a plat on file in the Office of Mineral Resources, Department of Natural Resources, as provided by the applicant. All bearings, distances and coordinates are based on Louisiana Coordinate System of 1927, (North or South Zone), where applicable.

NOTE: The above description of the Tract nominated for lease has been provided and corrected, where required, exclusively by the nomination party. Any mineral lease selected from this Tract and awarded by the Louisiana State Mineral Board shall be without warranty of any kind, either express, implied, or statutory, including, but not limited to, the implied warranties of merchantability and fitness for a particular purpose. Should the mineral lease awarded by the Louisiana State Mineral Board be subsequently modified, cancelled or abrogated due to the existence of conflicting leases, operating agreements, private claims or other future obligations or conditions which may affect all or any portion of the leased Tract, it shall not relieve the Lessee of the obligation to pay any bonus due thereon to the Louisiana State Mineral Board, nor shall the Louisiana State Mineral Board be obligated to refund any consideration paid by the Lessor prior to such modification, cancellation, or abrogation, including, but not limited to, bonuses, rentals and royalties.

NOTE: The State of Louisiana does hereby reserve, and this lease shall be subject to, the imprescriptible right of surface use in the nature of a servitude in favor of the Department of Natural Resources, including its Offices and Commissions, for the sole purpose of implementing, constructing, servicing and maintaining approved coastal zone management and/or restoration projects. Utilization of any and all rights derived under this lease by the mineral lessee, its agents, successors or assigns, shall not interfere with nor hinder the reasonable surface use by the Department of Natural Resources, its Offices or Commissions, as herein above reserved.

Applicant: Palmer & Palmer

Bidder	Cash Payment	Price / Acre	Rental	Oil	Gas	Other



132

Bik. 29

Bik. 30

Bik. 31

SL 4407

SL 4865

SL  
17457

SL  
17458

P. O. B.  
X=2,650,100.00  
Y= 322,330.00

SL 4458

SL 5049

SL 14559  
As Amended

SL 14217  
As Amended

SL 14561

Bik. 33

SL 16298,  
As Amended

Bik. 35

SL 14217  
As Amended

Bik. 34

SL 14216  
As Amended

**TR 35349**  
**2,468.02 ± ACS.**  
**MAR., 2003**

SL 14560  
As Amended

SL 16795,  
As Amended

Bik. 47  
BRETON SOUND AREA  
GULF OF MEXICO

Bik. 46

Plaquemines Parish, Louisiana

3000' 0' 3000'

NAD 27 LAMBERT LA. SOUTH ZONE



**TRACT 35350 - St. Bernard Parish, Louisiana**

All of the lands now or formerly constituting the beds and bottoms of all water bodies of every nature and description, and all islands and other lands formed by accretion, where allowed by law, or by reliction, and excepting tax adjudicated lands, belonging to the State of Louisiana and not presently under mineral lease on March 12, 2003, situated in St. Bernard Parish, Louisiana, and more particularly described as follows: Beginning at the Northeast corner of State Lease No. 17088 having Coordinates of X = 2,567,334.18 and Y = 477,300.00; thence West 4,509.18 feet along the North line of said State Lease No. 17088 to the Northeast corner of State Lease No. 17086, having Coordinates of X = 2,562,825.00 and Y = 477,300.00; thence West approximately 4,729 feet along the North line of said State Lease No. 17086 to a point on the eastern shoreline of Lake Borgne, being the boundary of the said Biloxi Wildlife Management Area; thence Northerly, Northwesterly and Northeasterly along said Eastern shoreline of Lake Borgne, being the boundary of the said Biloxi Wildlife Management Area to the intersection with a line having a Coordinate of X = 2,567,334.18; thence South approximately 15,929 feet to the point of beginning, containing approximately **125 acres**, all as more particularly outlined on a plat on file in the Office of Mineral Resources, Department of Natural Resources, as provided by the applicant. All bearings, distances and coordinates are based on Louisiana Coordinate System of 1927, (North or South Zone), where applicable.

NOTE: The above description of the Tract nominated for lease has been provided and corrected, where required, exclusively by the nomination party. Any mineral lease selected from this Tract and awarded by the Louisiana State Mineral Board shall be without warranty of any kind, either express, implied, or statutory, including, but not limited to, the implied warranties of merchantability and fitness for a particular purpose. Should the mineral lease awarded by the Louisiana State Mineral Board be subsequently modified, cancelled or abrogated due to the existence of conflicting leases, operating agreements, private claims or other future obligations or conditions which may affect all or any portion of the leased Tract, it shall not relieve the Lessee of the obligation to pay any bonus due thereon to the Louisiana State Mineral Board, nor shall the Louisiana State Mineral Board be obligated to refund any consideration paid by the Lessor prior to such modification, cancellation, or abrogation, including, but not limited to, bonuses, rentals and royalties.

NOTE: The Department of Wildlife and Fisheries has designated certain areas in the coastal waters of the State of Louisiana as Oyster Seed Bed Areas. The exact location of those Seed Bed Areas must be obtained from the Department of Wildlife and Fisheries and any work done under a mineral lease from the State of Louisiana may necessarily be conducted in conformity with the rules and regulations promulgated by the said Department of Wildlife and Fisheries for Oyster Seed Bed Areas.

NOTE: The State of Louisiana does hereby reserve, and this lease shall be subject to, the imprescriptible right of surface use in the nature of a

servitude in favor of the Department of Natural Resources, including its Offices and Commissions, for the sole purpose of implementing, constructing, servicing and maintaining approved coastal zone management and/or restoration projects. Utilization of any and all rights derived under this lease by the mineral lessee, its agents, successors or assigns, shall not interfere with nor hinder the reasonable surface use by the Department of Natural Resources, its Offices or Commissions, as herein above reserved.

Applicant: Kare-Sue Energy, Inc.

Bidder	Cash Payment	Price / Acre	Rental	Oil	Gas	Other

LAKE BORGNE

Pte aux Marchettes

TR 35350  
125 ± ACS.  
MAR., 2003

T12S-R16E

T12S-R17E

BILOXI WILDLIFE MANAGEMENT AREA

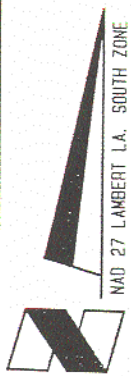
P. O. B.  
X=2,567,334.18  
Y= 477,300.00

SL 17086

SL 17088

ST. BERNARD PARISH, LA

3000' 0' 3000'



**TRACT 35351 - St. Bernard Parish, Louisiana**

All of the lands now or formerly constituting the beds and bottoms of all water bodies of every nature and description, and all islands and other lands formed by accretion, where allowed by law, or by reliction, and excepting tax adjudicated lands, belonging to the State of Louisiana and not presently under mineral lease on March 12, 2003, situated in St. Bernard Parish, Louisiana, and more particularly described as follows: Beginning at the Northeast corner of State Lease No. 17088 having Coordinates of X = 2,567,334.18 and Y = 477,300.00; thence North approximately 15,929 feet to a point on the Eastern shoreline of Lake Borgne, being the boundary of the said Biloxi Wildlife Management Area; thence Northeasterly along said Eastern shoreline of Lake Borgne, being the boundary of the said Biloxi Wildlife Management Area to a point of intersection with an East-West line having a Coordinate of Y = 495,934.88; thence East approximately 5,586 feet to an interior corner on the boundary of the said Biloxi Wildlife Management Area, having Coordinates of X = 2,577,536.76 and Y = 495,934.88; thence along said boundary of the said Biloxi Wildlife Management Area the following courses and distances: South 03 degrees 50 minutes 37 seconds East 123.80 feet, South 02 degrees 52 minutes 58 seconds East 5,341.39 feet, South 87 degrees 59 minutes 15 seconds West 5,287.23 feet, South 01 degrees 58 minutes 56 seconds East 2,773.83 feet, North 86 degrees 20 minutes 45 seconds East 2,668.53 feet, South 04 degrees 24 minutes 57 seconds East 1,314.43 feet, South 86 degrees 36 minutes 32 seconds West 2,728.21 feet, South 01 degrees 59 minutes 55 seconds East 1,339.20 feet and North 86 degrees 43 minutes 51 seconds East 5,475.30 feet to an interior corner on the boundary of the said Biloxi Wildlife Management Area, having Coordinates of X = 2,578,179.62 and Y = 485,190.91; thence South 01 degrees 17 minutes 16 seconds East 2,654.64 feet to an interior corner on the boundary of the said Biloxi Wildlife Management Area, having Coordinates of X = 2,578,239.28 and Y = 482,536.94; thence along said boundary of the said Biloxi Wildlife Management Area the following courses and distances: South 87 degrees 42 minutes 46 seconds West 2,678.41 feet, South 01 degrees 47 minutes 31 seconds East 2,624.47 feet, South 00 degrees 28 minutes 58 seconds East 28.13 feet, South 00 degrees 50 minutes 01 seconds West 1.76 feet and North 87 degrees 42 minutes 45 seconds East 2,655.80 feet to an interior corner on the boundary of the said Biloxi Wildlife Management Area, having Coordinates of X = 2,578,298.96 and Y = 479,882.97; thence South 01 degrees 17 minutes 16 seconds East 2,583.62 feet to a point having Coordinates of X = 2,578,357.02 and Y = 477,300.00; thence West 11,022.84 feet to the point of beginning, containing approximately **348 acres**, all as more particularly outlined on a plat on file in the Office of Mineral Resources, Department of Natural Resources, as provided by the applicant. All bearings, distances and coordinates are based on Louisiana Coordinate System of 1927, (North or South Zone), where applicable.

NOTE: The above description of the Tract nominated for lease has been provided and corrected, where required, exclusively by the nomination party. Any mineral lease selected from this Tract and awarded by the

Louisiana State Mineral Board shall be without warranty of any kind, either express, implied, or statutory, including, but not limited to, the implied warranties of merchantability and fitness for a particular purpose. Should the mineral lease awarded by the Louisiana State Mineral Board be subsequently modified, cancelled or abrogated due to the existence of conflicting leases, operating agreements, private claims or other future obligations or conditions which may affect all or any portion of the leased Tract, it shall not relieve the Lessee of the obligation to pay any bonus due thereon to the Louisiana State Mineral Board, nor shall the Louisiana State Mineral Board be obligated to refund any consideration paid by the Lessor prior to such modification, cancellation, or abrogation, including, but not limited to, bonuses, rentals and royalties.

NOTE: The Department of Wildlife and Fisheries has designated certain areas in the coastal waters of the State of Louisiana as Oyster Seed Bed Areas. The exact location of those Seed Bed Areas must be obtained from the Department of Wildlife and Fisheries and any work done under a mineral lease from the State of Louisiana may necessarily be conducted in conformity with the rules and regulations promulgated by the said Department of Wildlife and Fisheries for Oyster Seed Bed Areas.

NOTE: The State of Louisiana does hereby reserve, and this lease shall be subject to, the imprescriptible right of surface use in the nature of a servitude in favor of the Department of Natural Resources, including its Offices and Commissions, for the sole purpose of implementing, constructing, servicing and maintaining approved coastal zone management and/or restoration projects. Utilization of any and all rights derived under this lease by the mineral lessee, its agents, successors or assigns, shall not interfere with nor hinder the reasonable surface use by the Department of Natural Resources, its Offices or Commissions, as herein above reserved.

Applicant: Kare-Sue Energy, Inc.

Bidder	Cash Payment	Price / Acre	Rental	Oil	Gas	Other



LAKE BORGNE

138

T12S-R16E

T12S-R17E

TR 35351  
348 ± ACS.  
MAR., 2003

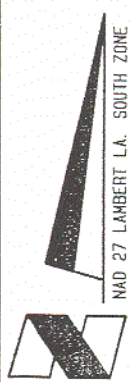
BILOXI WILDLIFE MANAGEMENT AREA

P. O. B.  
X=2,567,334.18  
Y= 477,300.00

SL 17088

St. Bernard Parish, Louisiana

3000' 0' 3000'



**TRACT 35352 - St. Bernard Parish, Louisiana**

All of the lands now or formerly constituting the beds and bottoms of all water bodies of every nature and description, and all islands and other lands formed by accretion, where allowed by law, or by reliction, and excepting tax adjudicated lands, belonging to the State of Louisiana and not presently under mineral lease on March 12, 2003, situated in St. Bernard Parish, Louisiana, and more particularly described as follows: Beginning at an interior corner on the boundary of the Biloxi Wildlife Management Area, having Coordinates of X = 2,577,813.68 and Y = 490,476.73; thence along said boundary of the said Biloxi Wildlife Management Area the following courses and distances: South 03 degrees 57 minutes 58 East 2,649.40 feet, South 03 degrees 57 minutes 16 seconds East 2,649.07 feet, South 86 degrees 43 minutes 51 seconds West 5,475.30 feet, North 01 degrees 59 minutes 55 seconds West 1,339.20 feet, North 86 degrees 36 minutes 32 seconds East 2,728.21 feet, North 04 degrees 24 minutes 57 seconds West 1,314.43 feet, South 86 degrees 20 minutes 45 seconds West 2,668.53 feet, North 01 degrees 58 minutes 56 seconds West 2,773.83 feet and North 87 degrees 59 minutes 15 seconds East 5,287.23 feet to the point of beginning, containing approximately **49 acres**, all as more particularly outlined on a plat on file in the Office of Mineral Resources, Department of Natural Resources, as provided by the applicant. All bearings, distances and coordinates are based on Louisiana Coordinate System of 1927, (North or South Zone), where applicable.

NOTE: The above description of the Tract nominated for lease has been provided and corrected, where required, exclusively by the nomination party. Any mineral lease selected from this Tract and awarded by the Louisiana State Mineral Board shall be without warranty of any kind, either express, implied, or statutory, including, but not limited to, the implied warranties of merchantability and fitness for a particular purpose. Should the mineral lease awarded by the Louisiana State Mineral Board be subsequently modified, cancelled or abrogated due to the existence of conflicting leases, operating agreements, private claims or other future obligations or conditions which may affect all or any portion of the leased Tract, it shall not relieve the Lessee of the obligation to pay any bonus due thereon to the Louisiana State Mineral Board, nor shall the Louisiana State Mineral Board be obligated to refund any consideration paid by the Lessor prior to such modification, cancellation, or abrogation, including, but not limited to, bonuses, rentals and royalties.

NOTE: The Department of Wildlife and Fisheries has designated certain areas in the coastal waters of the State of Louisiana as Oyster Seed Bed Areas. The exact location of those Seed Bed Areas must be obtained from the Department of Wildlife and Fisheries and any work done under a mineral lease from the State of Louisiana may necessarily be conducted in conformity with the rules and regulations promulgated by the said Department of Wildlife and Fisheries for Oyster Seed Bed Areas.

NOTE: The State of Louisiana does hereby reserve, and this lease shall be subject to, the imprescriptible right of surface use in the nature of a

servitude in favor of the Department of Natural Resources, including its Offices and Commissions, for the sole purpose of implementing, constructing, servicing and maintaining approved coastal zone management and/or restoration projects. Utilization of any and all rights derived under this lease by the mineral lessee, its agents, successors or assigns, shall not interfere with nor hinder the reasonable surface use by the Department of Natural Resources, its Offices or Commissions, as herein above reserved.

Applicant: Kare-Sue Energy, Inc.

Bidder	Cash Payment	Price / Acre	Rental	Oil	Gas	Other



LAKE BORGNE

P. O. B.  
X=2,577,813.68  
Y= 490,476.73

T12S-R16E

T12S-R17E

TR 35352  
49 ± ACS.  
MAR., 2003

BILOXI WILDLIFE MANAGEMENT AREA

SL 17088

NAD 27 LAMBERT LA. SOUTH ZONE

St. Bernard Parish, Louisiana

3000' 0' 3000'

**TRACT 35353 - St. Bernard Parish, Louisiana**

All of the lands now or formerly constituting the beds and bottoms of all water bodies of every nature and description, and all islands and other lands formed by accretion, where allowed by law, or by reliction, and excepting tax adjudicated lands, belonging to the State of Louisiana and not presently under mineral lease on March 12, 2003, situated in St. Bernard Parish, Louisiana, and more particularly described as follows: Beginning at an interior corner on the boundary of the Biloxi Wildlife Management Area, having Coordinates of X = 2,578,239.28 and Y = 482,536.94; thence along said boundary of the said Biloxi Wildlife Management Area the following courses and distances: South 01 degrees 17 minutes 17 seconds East 2,654.64 feet, South 87 degrees 42 minutes 45 seconds West 2,655.80 feet, North 00 degrees 50 minutes 01 seconds East 1.76 feet, North 00 degrees 28 minutes 58 seconds West 28.13 feet, North 01 degrees 47 minutes 31 seconds West 2,624.47 feet and North 87 degrees 42 minutes 46 seconds East 2,678.41 feet to the point of beginning, containing approximately **29 acres**, all as more particularly outlined on a plat on file in the Office of Mineral Resources, Department of Natural Resources, as provided by the applicant. All bearings, distances and coordinates are based on Louisiana Coordinate System of 1927, (North or South Zone), where applicable.

NOTE: The above description of the Tract nominated for lease has been provided and corrected, where required, exclusively by the nomination party. Any mineral lease selected from this Tract and awarded by the Louisiana State Mineral Board shall be without warranty of any kind, either express, implied, or statutory, including, but not limited to, the implied warranties of merchantability and fitness for a particular purpose. Should the mineral lease awarded by the Louisiana State Mineral Board be subsequently modified, cancelled or abrogated due to the existence of conflicting leases, operating agreements, private claims or other future obligations or conditions which may affect all or any portion of the leased Tract, it shall not relieve the Lessee of the obligation to pay any bonus due thereon to the Louisiana State Mineral Board, nor shall the Louisiana State Mineral Board be obligated to refund any consideration paid by the Lessor prior to such modification, cancellation, or abrogation, including, but not limited to, bonuses, rentals and royalties.

NOTE: The Department of Wildlife and Fisheries has designated certain areas in the coastal waters of the State of Louisiana as Oyster Seed Bed Areas. The exact location of those Seed Bed Areas must be obtained from the Department of Wildlife and Fisheries and any work done under a mineral lease from the State of Louisiana may necessarily be conducted in conformity with the rules and regulations promulgated by the said Department of Wildlife and Fisheries for Oyster Seed Bed Areas.

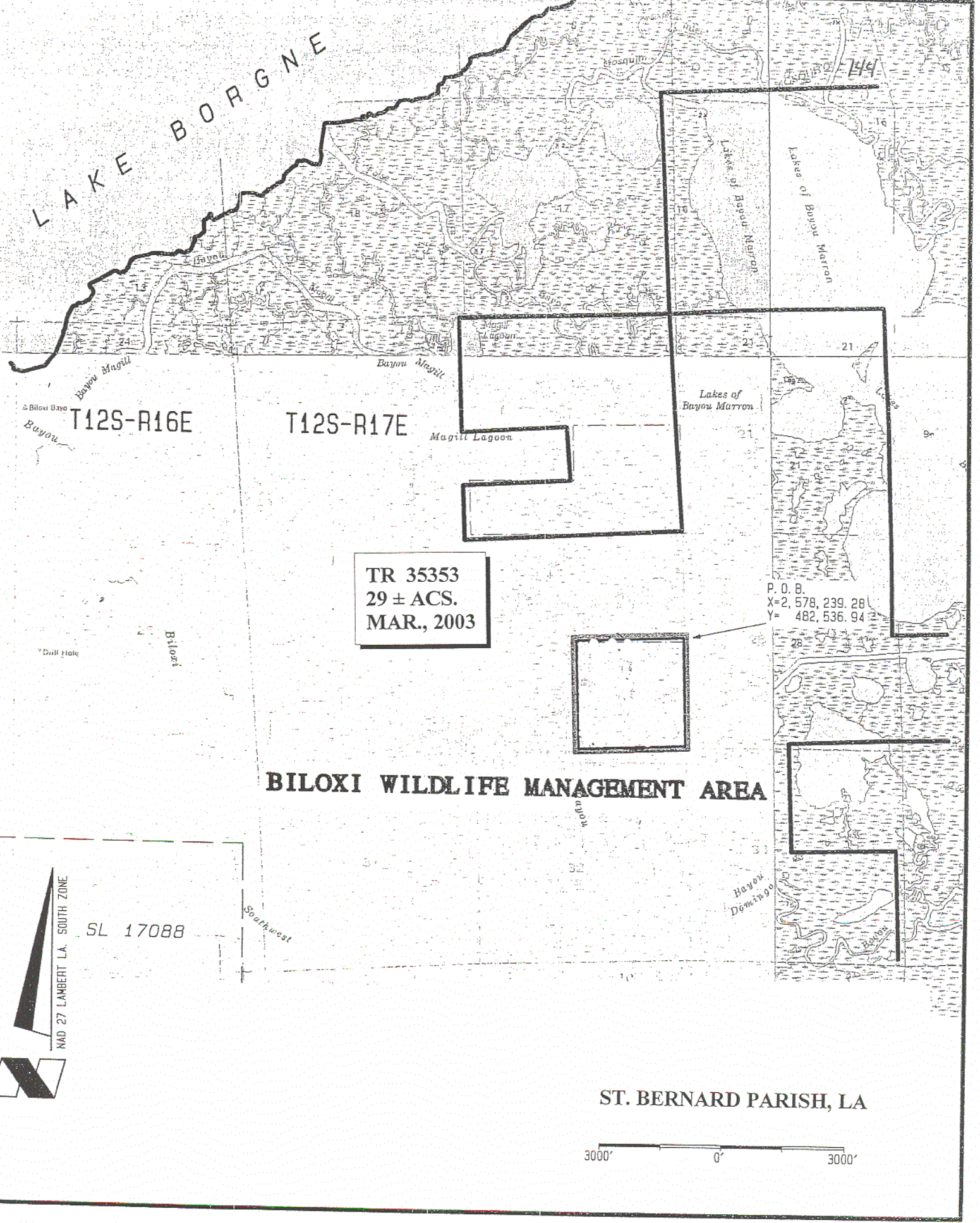
NOTE: The State of Louisiana does hereby reserve, and this lease shall be subject to, the imprescriptible right of surface use in the nature of a servitude in favor of the Department of Natural Resources, including its Offices and Commissions, for the sole purpose of implementing,

constructing, servicing and maintaining approved coastal zone management and/or restoration projects. Utilization of any and all rights derived under this lease by the mineral lessee, its agents, successors or assigns, shall not interfere with nor hinder the reasonable surface use by the Department of Natural Resources, its Offices or Commissions, as herein above reserved.

Applicant: Kare-Sue Energy, Inc.

Bidder	Cash Payment	Price / Acre	Rental	Oil	Gas	Other





LAKE BORGNE

T12S-R16E

T12S-R17E

TR 35353  
29 ± ACS.  
MAR., 2003

P. O. B.  
X=2,578,239.28  
Y=482,536.94

BILOXI WILDLIFE MANAGEMENT AREA

SL 17088

ST. BERNARD PARISH, LA

3000' 0' 3000'

**TRACT 35354 - St. Bernard Parish, Louisiana**

All of the lands now or formerly constituting the beds and bottoms of all water bodies of every nature and description, and all islands and other lands formed by accretion, where allowed by law, or by reliction, and excepting tax adjudicated lands, belonging to the State of Louisiana and not presently under mineral lease on March 12, 2003, situated in St. Bernard Parish, Louisiana, and more particularly described as follows: Beginning at the Northeast corner of State Lease No. 17088 having Coordinates of X = 2,567,334.18 and Y = 477,300.00; thence East 11,022.84 feet to a point having Coordinates of X=2,578,357.02 and Y= 477,300.00; thence South 01 degrees 07 minutes 54 seconds East 7,983.87 feet to an interior corner on the boundary of the said Biloxi Wildlife Management Area, having Coordinates of X = 2,578,514.69 and Y = 469,317.68; thence South 00 degrees 50 minutes 30 seconds East 5,145.50 feet along said boundary of the said Biloxi Wildlife Management Area to a point having Coordinates of X = 2,578,590.28 and Y = 464,172.75; thence North 89 degrees 53 minutes 48 seconds West 11,256.11 feet to the Southeast corner of said State Lease No. 17088, having Coordinates of X = 2,567,334.18 and Y = 464,193.03; thence North 13,106.97 feet along the Eastern boundary of said State Lease No. 17088 to the point of beginning, containing approximately **189 acres**, all as more particularly outlined on a plat on file in the Office of Mineral Resources, Department of Natural Resources, as provided by the applicant. All bearings, distances and coordinates are based on Louisiana Coordinate System of 1927, (North or South Zone), where applicable.

NOTE: The above description of the Tract nominated for lease has been provided and corrected, where required, exclusively by the nomination party. Any mineral lease selected from this Tract and awarded by the Louisiana State Mineral Board shall be without warranty of any kind, either express, implied, or statutory, including, but not limited to, the implied warranties of merchantability and fitness for a particular purpose. Should the mineral lease awarded by the Louisiana State Mineral Board be subsequently modified, cancelled or abrogated due to the existence of conflicting leases, operating agreements, private claims or other future obligations or conditions which may affect all or any portion of the leased Tract, it shall not relieve the Lessee of the obligation to pay any bonus due thereon to the Louisiana State Mineral Board, nor shall the Louisiana State Mineral Board be obligated to refund any consideration paid by the Lessor prior to such modification, cancellation, or abrogation, including, but not limited to, bonuses, rentals and royalties.

NOTE: The Department of Wildlife and Fisheries has designated certain areas in the coastal waters of the State of Louisiana as Oyster Seed Bed Areas. The exact location of those Seed Bed Areas must be obtained from the Department of Wildlife and Fisheries and any work done under a mineral lease from the State of Louisiana may necessarily be conducted in conformity with the rules and regulations promulgated by the said Department of Wildlife and Fisheries for Oyster Seed Bed Areas.

NOTE: The State of Louisiana does hereby reserve, and this lease shall be subject to, the imprescriptible right of surface use in the nature of a servitude in favor of the Department of Natural Resources, including its Offices and Commissions, for the sole purpose of implementing, constructing, servicing and maintaining approved coastal zone management and/or restoration projects. Utilization of any and all rights derived under this lease by the mineral lessee, its agents, successors or assigns, shall not interfere with nor hinder the reasonable surface use by the Department of Natural Resources, its Offices or Commissions, as herein above reserved.

Applicant: Kare-Sue Energy, Inc.

Bidder	Cash Payment	Price / Acre	Rental	Oil	Gas	Other



P. O. B.  
X=2,567,334.18  
Y= 477,300.00

T12S-R16E

T12S-R17E

T13S-R16E

T13S-R17E

TR 35354  
189 ± ACS.  
MAR., 2003

BILOXI WILDLIFE MANAGEMENT AREA

MANAGEMENT AREA

St. Bernard Parish, Louisiana

3000' 0' 3000'