

TRACT 35327 - Terrebonne Parish, Louisiana

All of the lands now or formerly constituting the beds and bottoms of all water bodies of every nature and description, and all islands and other lands formed by accretion, where allowed by law, or by reliction, and excepting tax adjudicated lands, belonging to the State of Louisiana and not presently under mineral lease on March 12, 2003, situated in Terrebonne Parish, Louisiana, and more particularly described as follows: Beginning at a point having Coordinates of X = 2,217,071.33 and Y = 266,570.64; thence North 3,154.92 feet to a point on the South line of State Lease No. 5351, as amended, having Coordinates of X = 2,217,071.33 and Y = 269,725.56; thence North 84 degrees 00 minutes 13 seconds East 2,592,86 feet along the South line of said State Lease No. 5351 to its point of intersection with the Northwest corner of State Lease No. 17535, having Coordinates of X = 2,219,650.00 and Y = 269,996.42; thence along the boundaries of said State Lease No. 17535 the following: South 1,906.42 and East 707.07 feet to a point having Coordinates of X = 2,220,357.07 and Y = 268,090.00; thence South 1,519.36 feet to a point having Coordinates of X = 2,220,357.07 and Y = 266,570.64; thence West 3,285.74 feet to the point of beginning, containing approximately **219.44 acres**, all as more particularly outlined on a plat on file in the Office of Mineral Resources, Department of Natural Resources, as provided by the applicant. All bearings, distances and coordinates are based on Louisiana Coordinate System of 1927, (North or South Zone), where applicable.

NOTE: The above description of the Tract nominated for lease has been provided and corrected, where required, exclusively by the nomination party. Any mineral lease selected from this Tract and awarded by the Louisiana State Mineral Board shall be without warranty of any kind, either express, implied, or statutory, including, but not limited to, the implied warranties of merchantability and fitness for a particular purpose. Should the mineral lease awarded by the Louisiana State Mineral Board be subsequently modified, cancelled or abrogated due to the existence of conflicting leases, operating agreements, private claims or other future obligations or conditions which may affect all or any portion of the leased Tract, it shall not relieve the Lessee of the obligation to pay any bonus due thereon to the Louisiana State Mineral Board, nor shall the Louisiana State Mineral Board be obligated to refund any consideration paid by the Lessor prior to such modification, cancellation, or abrogation, including, but not limited to, bonuses, rentals and royalties.

NOTE: The Department of Wildlife and Fisheries has designated certain areas in the coastal waters of the State of Louisiana as Oyster Seed Bed Areas. The exact location of those Seed Bed Areas must be obtained from the Department of Wildlife and Fisheries and any work done under a mineral lease from the State of Louisiana may necessarily be conducted in conformity with the rules and regulations promulgated by the said Department of Wildlife and Fisheries for Oyster Seed Bed Areas.

NOTE: The State of Louisiana does hereby reserve, and this lease shall be subject to, the imprescriptible right of surface use in the nature of a

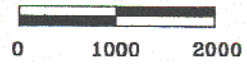
servitude in favor of the Department of Natural Resources, including its Offices and Commissions, for the sole purpose of implementing, constructing, servicing and maintaining approved coastal zone management and/or restoration projects. Utilization of any and all rights derived under this lease by the mineral lessee, its agents, successors or assigns, shall not interfere with nor hinder the reasonable surface use by the Department of Natural Resources, its Offices or Commissions, as herein above reserved.

Applicant: Leslie L. Moore

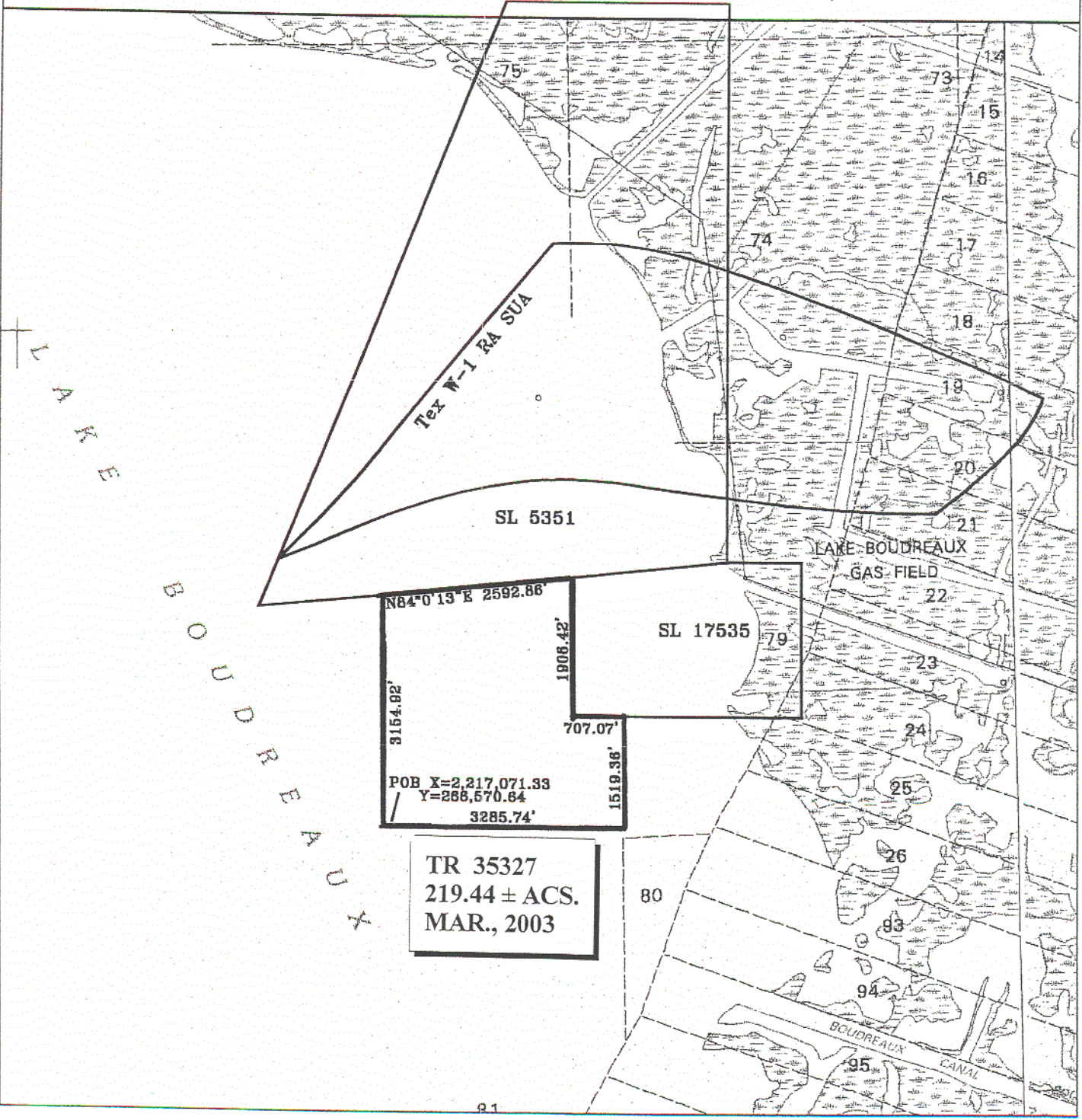
| Bidder | Cash Payment | Price / Acre | Rental | Oil | Gas | Other |
|--------|--------------|--------------|--------|-----|-----|-------|
| | | | | | | |
| | | | | | | |
| | | | | | | |
| | | | | | | |

66

Lake Boudreaux Terrebonne Parish, LA



Scale: 1" = 2,000'



N84°0'13"E 2592.86'
3154.92'
1906.42'
707.07'
1519.36'
3285.74'

TR 35327
219.44 ± ACS.
MAR., 2003

L
A
K
E

B
O
U
D
R
E
A
U
X

L
A
K
E
-
B
O
U
D
R
E
A
U
X
G
A
S
F
I
E
L
D

B
O
U
D
R
E
A
U
X
C
A
N
A
L

TRACT 35328 - Terrebonne Parish, Louisiana

All of the lands now or formerly constituting the beds and bottoms of all water bodies of every nature and description, and all islands and other lands formed by accretion, where allowed by law, or by reliction, and excepting tax adjudicated lands, belonging to the State of Louisiana and not presently under mineral lease on March 12, 2003, situated in Terrebonne Parish, Louisiana, and more particularly described as follows: Beginning at a point having Coordinates of X = 2,220,357.07 and Y = 266,570.64; thence North 1,519.36 feet to a point on the South line of State Lease No. 17535 having Coordinates of X = 2,220,357.07 and Y = 268,090.00; thence along the boundaries of said State Lease No. 17535 as follows: East 2,382.93 feet, North 2,127.00 feet and West 990.00 feet to a point on the North line of said State Lease No. 17535 and the Southeast corner of State Lease No. 5351, as amended, having Coordinates of X = 2,221,750.00 and Y = 270,217.00; thence North 1,748.48 feet along the East line of said State Lease No. 5351 to a point having Coordinates of X = 2,221,750.00 and Y = 271,965.48; thence East 2,274.87 feet to a point having Coordinates of X = 2,224,024.87 and Y = 271,965.48; thence South 5,394.84 feet to a point having Coordinates of X = 2,224,024.87 and Y = 266,570.64; thence West 3,667.80 to the point of beginning, containing approximately **73 acres**, all as more particularly outlined on a plat on file in the Office of Mineral Resources, Department of Natural Resources, as provided by the applicant. All bearings, distances and coordinates are based on Louisiana Coordinate System of 1927, (North or South Zone), where applicable.

NOTE: The above description of the Tract nominated for lease has been provided and corrected, where required, exclusively by the nomination party. Any mineral lease selected from this Tract and awarded by the Louisiana State Mineral Board shall be without warranty of any kind, either express, implied, or statutory, including, but not limited to, the implied warranties of merchantability and fitness for a particular purpose. Should the mineral lease awarded by the Louisiana State Mineral Board be subsequently modified, cancelled or abrogated due to the existence of conflicting leases, operating agreements, private claims or other future obligations or conditions which may affect all or any portion of the leased Tract, it shall not relieve the Lessee of the obligation to pay any bonus due thereon to the Louisiana State Mineral Board, nor shall the Louisiana State Mineral Board be obligated to refund any consideration paid by the Lessor prior to such modification, cancellation, or abrogation, including, but not limited to, bonuses, rentals and royalties.

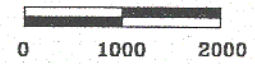
NOTE: The Department of Wildlife and Fisheries has designated certain areas in the coastal waters of the State of Louisiana as Oyster Seed Bed Areas. The exact location of those Seed Bed Areas must be obtained from the Department of Wildlife and Fisheries and any work done under a mineral lease from the State of Louisiana may necessarily be conducted in conformity with the rules and regulations promulgated by the said Department of Wildlife and Fisheries for Oyster Seed Bed Areas.

NOTE: The State of Louisiana does hereby reserve, and this lease shall be subject to, the imprescriptible right of surface use in the nature of a servitude in favor of the Department of Natural Resources, including its Offices and Commissions, for the sole purpose of implementing, constructing, servicing and maintaining approved coastal zone management and/or restoration projects. Utilization of any and all rights derived under this lease by the mineral lessee, its agents, successors or assigns, shall not interfere with nor hinder the reasonable surface use by the Department of Natural Resources, its Offices or Commissions, as herein above reserved.

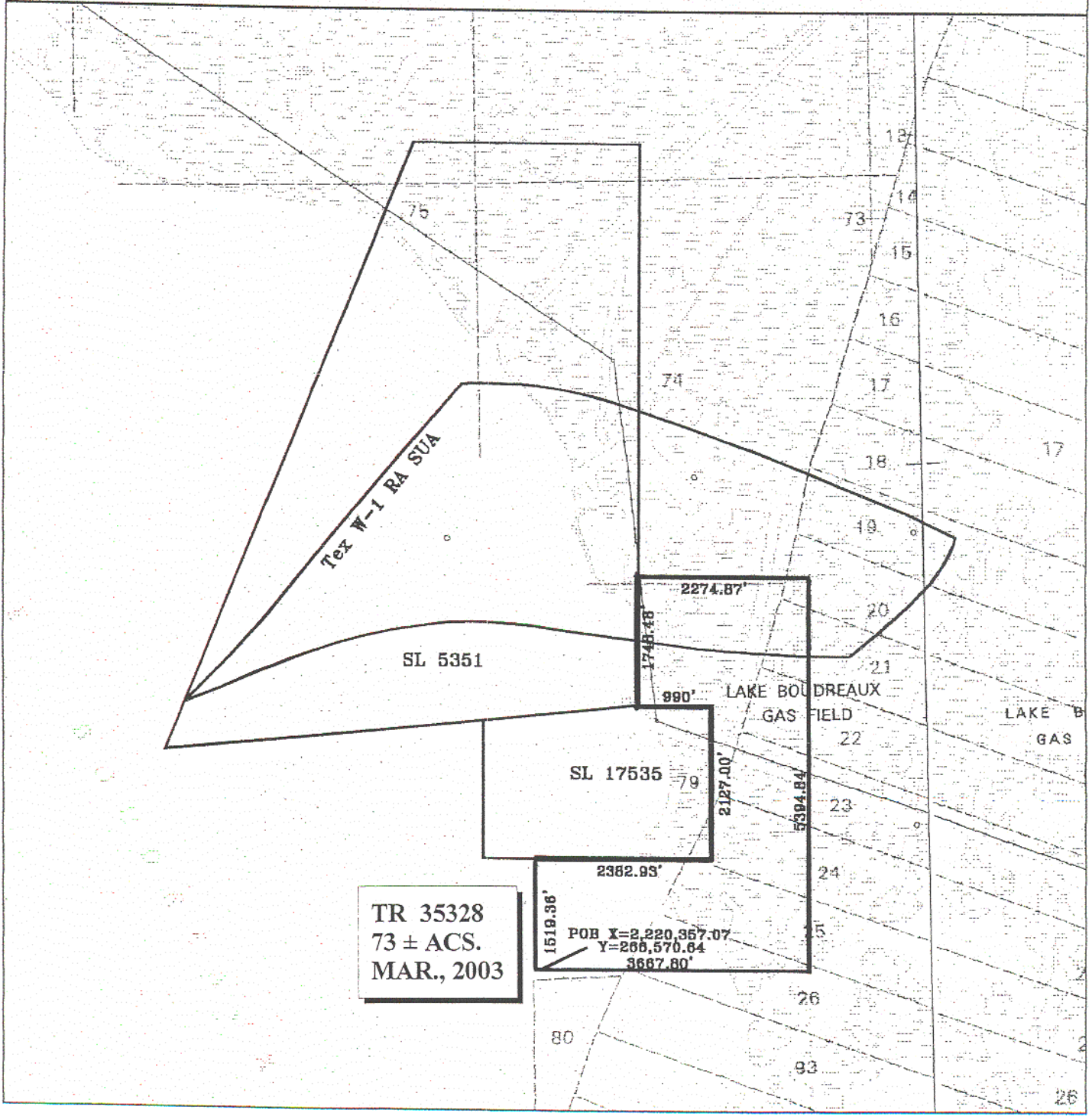
Applicant: Leslie L. Moore

| Bidder | Cash Payment | Price / Acre | Rental | Oil | Gas | Other |
|--------|--------------|--------------|--------|-----|-----|-------|
| | | | | | | |
| | | | | | | |
| | | | | | | |
| | | | | | | |

Lake Boudreaux
Terrebonne Parish, LA



Scale: 1" = 2,000'



TR 35328
73 ± ACS.
MAR., 2003

2382.95'
1519.36'
POB X=2,220,367.07
Y=266,570.64
3687.80'

TRACT 35329 - Terrebonne Parish, Louisiana

All of the lands now or formerly constituting the beds and bottoms of all water bodies of every nature and description, and all islands and other lands formed by accretion, where allowed by law, or by reliction, and excepting tax adjudicated lands, belonging to the State of Louisiana and not presently under mineral lease on March 12, 2003, situated in Terrebonne Parish, Louisiana, and more particularly described as follows: Beginning at a point having Coordinates of X = 2,213,479.94 and Y = 266,570.64; thence East 3,591.39 feet to a point having Coordinates of X = 2,217,071.33 and Y = 266,570.64; thence South 2,875.56 feet to a point having Coordinates of X = 2,217,071.33 and Y = 263,695.08; thence West 3,591.39 to a point having Coordinates of X = 2,213,479.94 and Y = 263,695.08; thence North 2,875.56 feet to the point of beginning, containing approximately **237.08 acres**, all as more particularly outlined on a plat on file in the Office of Mineral Resources, Department of Natural Resources, as provided by the applicant. All bearings, distances and coordinates are based on Louisiana Coordinate System of 1927, (North or South Zone), where applicable.

NOTE: The above description of the Tract nominated for lease has been provided and corrected, where required, exclusively by the nomination party. Any mineral lease selected from this Tract and awarded by the Louisiana State Mineral Board shall be without warranty of any kind, either express, implied, or statutory, including, but not limited to, the implied warranties of merchantability and fitness for a particular purpose. Should the mineral lease awarded by the Louisiana State Mineral Board be subsequently modified, cancelled or abrogated due to the existence of conflicting leases, operating agreements, private claims or other future obligations or conditions which may affect all or any portion of the leased Tract, it shall not relieve the Lessee of the obligation to pay any bonus due thereon to the Louisiana State Mineral Board, nor shall the Louisiana State Mineral Board be obligated to refund any consideration paid by the Lessor prior to such modification, cancellation, or abrogation, including, but not limited to, bonuses, rentals and royalties.

NOTE: The Department of Wildlife and Fisheries has designated certain areas in the coastal waters of the State of Louisiana as Oyster Seed Bed Areas. The exact location of those Seed Bed Areas must be obtained from the Department of Wildlife and Fisheries and any work done under a mineral lease from the State of Louisiana may necessarily be conducted in conformity with the rules and regulations promulgated by the said Department of Wildlife and Fisheries for Oyster Seed Bed Areas.

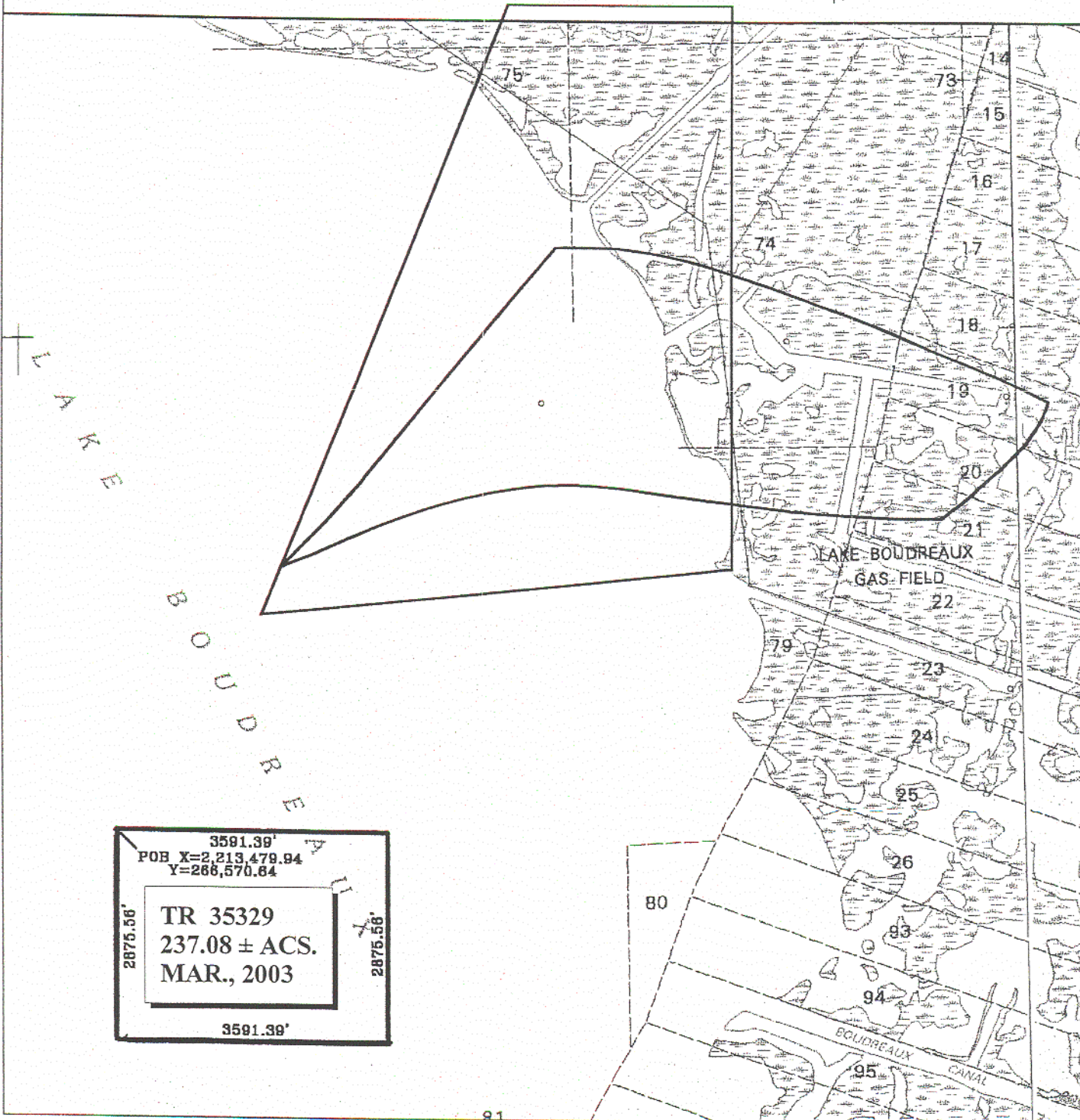
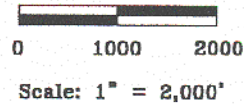
NOTE: The State of Louisiana does hereby reserve, and this lease shall be subject to, the imprescriptible right of surface use in the nature of a servitude in favor of the Department of Natural Resources, including its Offices and Commissions, for the sole purpose of implementing, constructing, servicing and maintaining approved coastal zone management and/or restoration projects. Utilization of any and all rights derived under this lease by the mineral lessee, its agents, successors or assigns,

shall not interfere with nor hinder the reasonable surface use by the Department of Natural Resources, its Offices or Commissions, as herein above reserved.

Applicant: Leslie L. Moore

| Bidder | Cash Payment | Price / Acre | Rental | Oil | Gas | Other |
|--------|--------------|--------------|--------|-----|-----|-------|
| | | | | | | |
| | | | | | | |
| | | | | | | |
| | | | | | | |

Lake Boudreaux
Terrebonne Parish, LA



3591.39'
 POB X=2,213,479.94
 Y=266,570.64

2875.56'

TR 35329
 237.08 ± ACS.
 MAR., 2003

2875.56'

3591.39'

TRACT 35330 - Terrebonne Parish, Louisiana

All of the lands now or formerly constituting the beds and bottoms of all water bodies of every nature and description, and all islands and other lands formed by accretion, where allowed by law, or by reliction, and excepting tax adjudicated lands, belonging to the State of Louisiana and not presently under mineral lease on March 12, 2003, situated in Terrebonne Parish, Louisiana, and more particularly described as follows: Beginning at a point having Coordinates of X = 2,217,071.33 and Y = 266,570.64; thence East 3,285.74 feet to a point having Coordinates of X = 2,220,357.07 and Y = 266,570.64; thence South 2,875.56 feet to a point having Coordinates of X = 2,220,357.07 and Y = 263,695.08; thence West 3,285.74 feet to a point having Coordinates of X = 2,217,071.33 and Y = 263,695.08; thence North 2,875.56 feet to the point of beginning, containing approximately **216.90 acres**, all as more particularly outlined on a plat on file in the Office of Mineral Resources, Department of Natural Resources, as provided by the applicant. All bearings, distances and coordinates are based on Louisiana Coordinate System of 1927, (North or South Zone), where applicable.

NOTE: The above description of the Tract nominated for lease has been provided and corrected, where required, exclusively by the nomination party. Any mineral lease selected from this Tract and awarded by the Louisiana State Mineral Board shall be without warranty of any kind, either express, implied, or statutory, including, but not limited to, the implied warranties of merchantability and fitness for a particular purpose. Should the mineral lease awarded by the Louisiana State Mineral Board be subsequently modified, cancelled or abrogated due to the existence of conflicting leases, operating agreements, private claims or other future obligations or conditions which may affect all or any portion of the leased Tract, it shall not relieve the Lessee of the obligation to pay any bonus due thereon to the Louisiana State Mineral Board, nor shall the Louisiana State Mineral Board be obligated to refund any consideration paid by the Lessor prior to such modification, cancellation, or abrogation, including, but not limited to, bonuses, rentals and royalties.

NOTE: The Department of Wildlife and Fisheries has designated certain areas in the coastal waters of the State of Louisiana as Oyster Seed Bed Areas. The exact location of those Seed Bed Areas must be obtained from the Department of Wildlife and Fisheries and any work done under a mineral lease from the State of Louisiana may necessarily be conducted in conformity with the rules and regulations promulgated by the said Department of Wildlife and Fisheries for Oyster Seed Bed Areas.

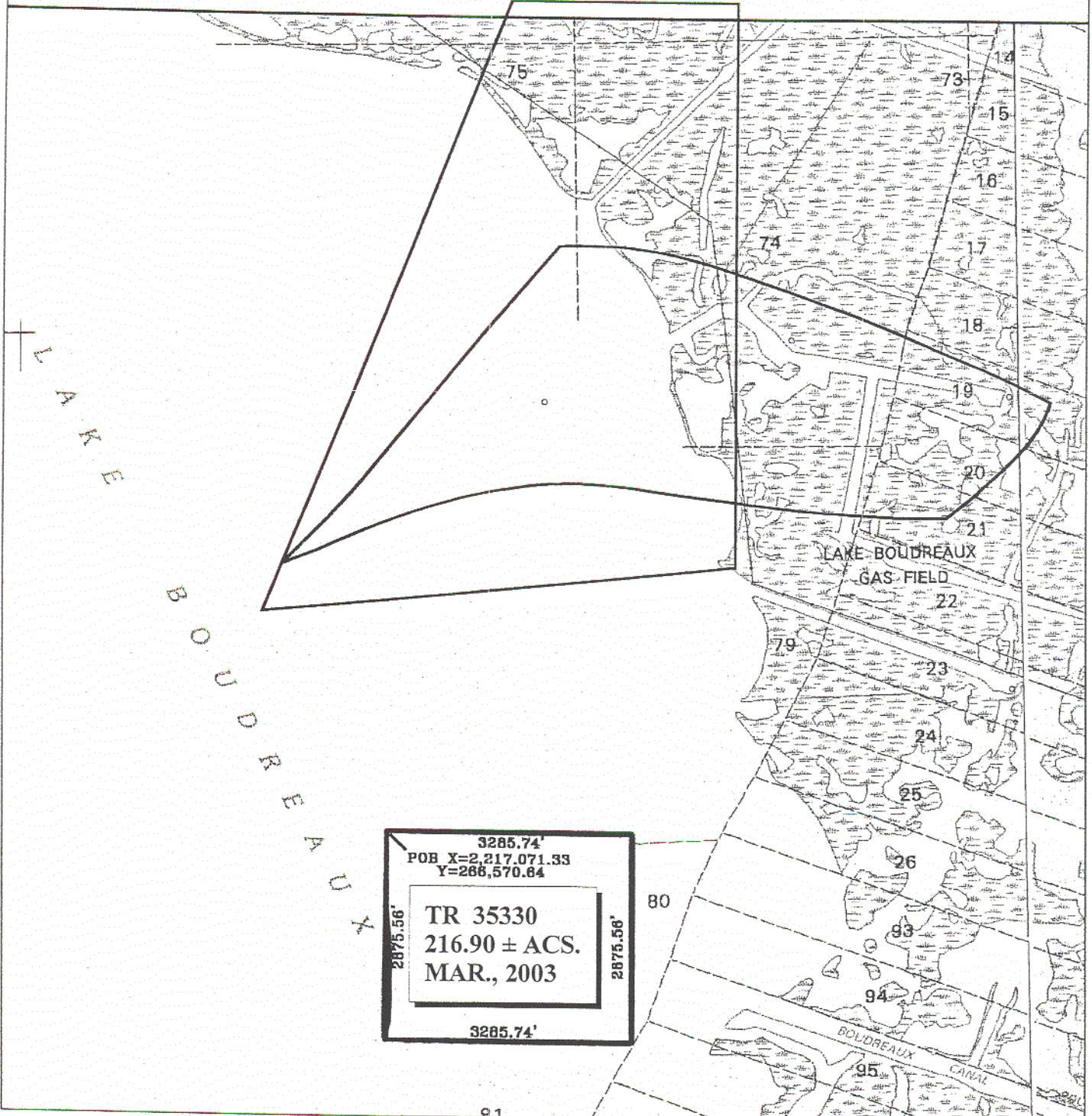
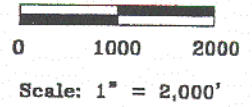
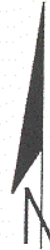
NOTE: The State of Louisiana does hereby reserve, and this lease shall be subject to, the imprescriptible right of surface use in the nature of a servitude in favor of the Department of Natural Resources, including its Offices and Commissions, for the sole purpose of implementing, constructing, servicing and maintaining approved coastal zone management and/or restoration projects. Utilization of any and all rights derived under this lease by the mineral lessee, its agents, successors or assigns,

shall not interfere with nor hinder the reasonable surface use by the Department of Natural Resources, its Offices or Commissions, as herein above reserved.

Applicant: Leslie L. Moore

| Bidder | Cash Payment | Price / Acre | Rental | Oil | Gas | Other |
|--------|--------------|--------------|--------|-----|-----|-------|
| | | | | | | |
| | | | | | | |
| | | | | | | |
| | | | | | | |

Lake Boudreaux
Terrebonne Parish, LA



3285.74'
 POB X=2,217,071.33
 Y=268,570.64

TR 35330
216.90 ± ACS.
MAR., 2003

3285.74'
 2875.56' 2875.56'

TRACT 35331 - Terrebonne Parish, Louisiana

All of the lands now or formerly constituting the beds and bottoms of all water bodies of every nature and description, and all islands and other lands formed by accretion, where allowed by law, or by reliction, and excepting tax adjudicated lands, belonging to the State of Louisiana and not presently under mineral lease on March 12, 2003, situated in Terrebonne Parish, Louisiana, and more particularly described as follows: Beginning at a point having Coordinates of X = 2,220,357.07 and Y = 266,570.64; thence East 3,667.80 feet to a point having Coordinates of X = 2,224,024.87 and Y = 266,570.64; thence South 2,875.56 feet to a point having Coordinates of X = 2,224,024.87 and Y = 263,695.08; thence West 3,667.80 to a point having Coordinates of X = 2,220,357.07 and Y = 263,695.08; thence North 2,875.56 feet to the point of beginning, containing approximately **158.66 acres**, all as more particularly outlined on a plat on file in the Office of Mineral Resources, Department of Natural Resources, as provided by the applicant. All bearings, distances and coordinates are based on Louisiana Coordinate System of 1927, (North or South Zone), where applicable.

NOTE: The above description of the Tract nominated for lease has been provided and corrected, where required, exclusively by the nomination party. Any mineral lease selected from this Tract and awarded by the Louisiana State Mineral Board shall be without warranty of any kind, either express, implied, or statutory, including, but not limited to, the implied warranties of merchantability and fitness for a particular purpose. Should the mineral lease awarded by the Louisiana State Mineral Board be subsequently modified, cancelled or abrogated due to the existence of conflicting leases, operating agreements, private claims or other future obligations or conditions which may affect all or any portion of the leased Tract, it shall not relieve the Lessee of the obligation to pay any bonus due thereon to the Louisiana State Mineral Board, nor shall the Louisiana State Mineral Board be obligated to refund any consideration paid by the Lessor prior to such modification, cancellation, or abrogation, including, but not limited to, bonuses, rentals and royalties.

NOTE: The Department of Wildlife and Fisheries has designated certain areas in the coastal waters of the State of Louisiana as Oyster Seed Bed Areas. The exact location of those Seed Bed Areas must be obtained from the Department of Wildlife and Fisheries and any work done under a mineral lease from the State of Louisiana may necessarily be conducted in conformity with the rules and regulations promulgated by the said Department of Wildlife and Fisheries for Oyster Seed Bed Areas.

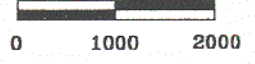
NOTE: The State of Louisiana does hereby reserve, and this lease shall be subject to, the imprescriptible right of surface use in the nature of a servitude in favor of the Department of Natural Resources, including its Offices and Commissions, for the sole purpose of implementing, constructing, servicing and maintaining approved coastal zone management and/or restoration projects. Utilization of any and all rights derived under this lease by the mineral lessee, its agents, successors or assigns,

shall not interfere with nor hinder the reasonable surface use by the Department of Natural Resources, its Offices or Commissions, as herein above reserved.

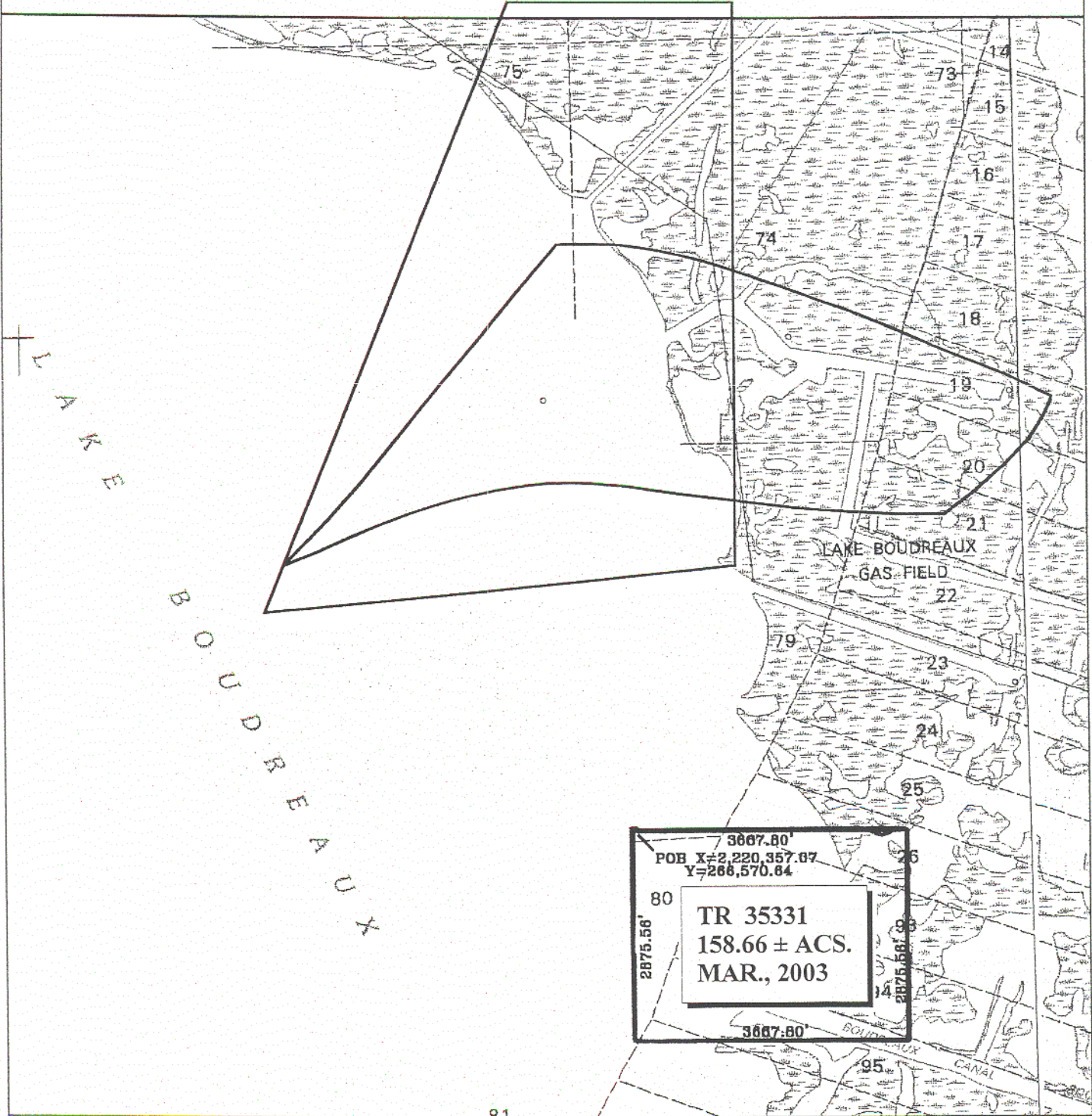
Applicant: Leslie L. Moore

| Bidder | Cash Payment | Price / Acre | Rental | Oil | Gas | Other |
|--------|--------------|--------------|--------|-----|-----|-------|
| | | | | | | |
| | | | | | | |
| | | | | | | |
| | | | | | | |

Lake Boudreaux
Terrebonne Parish, LA



Scale: 1" = 2,000'



3667.80'
 POB X=2,220,357.07
 Y=286,570.84

80

2875.56'

TR 35331
 158.66 ± ACS.
 MAR., 2003

3667.80'

81

TRACT 35332 - Jefferson and Lafourche Parishes, Louisiana

All of the lands now or formerly constituting the beds and bottoms of all water bodies of every nature and description, and all islands and other lands formed by accretion, where allowed by law, or by reliction, and excepting tax adjudicated lands, belonging to the State of Louisiana and not presently under mineral lease on March 12, 2003, situated in Jefferson and Lafourche Parishes, Louisiana, and more particularly described as follows: Beginning at the Southwest corner of State Lease No. 16882 having Coordinates of X = 2,362,336.27 and Y = 316,468.38; thence East 7,663.73 feet along the South boundary of said State Lease No. 16882 to its Southeast corner having Coordinates of X = 2,370,000.00 and Y = 316,468.38; thence North approximately 532 feet along the Eastern boundary of said State Lease No. 16882 to an intersection point on the Southwestern boundary of State Lease No. 1972, as amended, having a Coordinate of X = 2,370,000.00; thence along the said Southwestern boundary of State Lease No. 1972, as amended, Southeasterly, Northeasterly, Southeasterly, Southwesterly and Southeasterly to an intersection point with a line that bears North 09 degrees 16 minutes 50 seconds East approximately 820 feet from the Northwest corner of State Lease No. 17613; thence South 09 degrees 16 minutes 50 seconds West approximately 820 feet to the said Northwest corner of State Lease No. 17613 having Coordinates of X = 2,374,030.00 and Y = 313,920.00; thence South 09 degrees 16 minutes 50 seconds West 5,704.67 feet along the West boundary of said State Lease No. 17613 to its Southwest corner having Coordinates of X = 2,373,110.00 and Y = 308,290.00; thence South 3,082.80 feet to a point having Coordinates of X = 2,373,110.00 and Y = 305,207.20; thence West 5,821.00 feet to the Southeast corner of State Lease No. 17642 having Coordinates of X = 2,367,289.00 and Y = 305,207.20; thence North 10 degrees 42 minutes 09 seconds West 6,095.53 feet along the Eastern boundary of said State Lease No. 17642 to its Northeast corner having Coordinates of X = 2,366,157.00 and Y = 311,196.70; thence South 51 degrees 19 minutes 43 seconds West 3,058.63 feet along the Northern boundary of said State Lease No. 17642 to its Northwest corner having Coordinates of X = 2,363,769.00 and Y = 309,285.50; thence South 00 degrees 50 minutes 35 seconds East 4,078.74 feet along the Western boundary of said State Lease No. 17642 to a point having Coordinates of X = 2,363,829.02 and Y = 305,207.20; thence West 1,492.75 feet to a point having Coordinates of X = 2,362,336.27 and Y = 305,207.20; thence North 11,261.18 feet to the point of beginning, **LESS AND EXCEPT**, if any, that portion of State Lease No. 1972, as amended, that may lie within the above described tract, containing approximately **2,462 acres**, all as more particularly outlined on a plat on file in the Office of Mineral Resources, Department of Natural Resources, as provided by the applicant. All bearings, distances and coordinates are based on Louisiana Coordinate System of 1927, (North or South Zone), where applicable.

NOTE: The above description of the Tract nominated for lease has been provided and corrected, where required, exclusively by the nomination party. Any mineral lease selected from this Tract and awarded by the Louisiana State Mineral Board shall be without warranty of any kind, either express, implied, or statutory, including, but not limited to, the

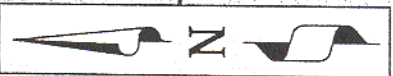
implied warranties of merchantability and fitness for a particular purpose. Should the mineral lease awarded by the Louisiana State Mineral Board be subsequently modified, cancelled or abrogated due to the existence of conflicting leases, operating agreements, private claims or other future obligations or conditions which may affect all or any portion of the leased Tract, it shall not relieve the Lessee of the obligation to pay any bonus due thereon to the Louisiana State Mineral Board, nor shall the Louisiana State Mineral Board be obligated to refund any consideration paid by the Lessor prior to such modification, cancellation, or abrogation, including, but not limited to, bonuses, rentals and royalties.

NOTE: The Department of Wildlife and Fisheries has designated certain areas in the coastal waters of the State of Louisiana as Oyster Seed Bed Areas. The exact location of those Seed Bed Areas must be obtained from the Department of Wildlife and Fisheries and any work done under a mineral lease from the State of Louisiana may necessarily be conducted in conformity with the rules and regulations promulgated by the said Department of Wildlife and Fisheries for Oyster Seed Bed Areas.

NOTE: The State of Louisiana does hereby reserve, and this lease shall be subject to, the imprescriptible right of surface use in the nature of a servitude in favor of the Department of Natural Resources, including its Offices and Commissions, for the sole purpose of implementing, constructing, servicing and maintaining approved coastal zone management and/or restoration projects. Utilization of any and all rights derived under this lease by the mineral lessee, its agents, successors or assigns, shall not interfere with nor hinder the reasonable surface use by the Department of Natural Resources, its Offices or Commissions, as herein above reserved.

Applicant: Magnolia Energy Services, L.L.C.

| Bidder | Cash Payment | Price / Acre | Rental | Oil | Gas | Other |
|--------|--------------|--------------|--------|-----|-----|-------|
| | | | | | | |
| | | | | | | |
| | | | | | | |
| | | | | | | |



T18S-R22E

S.L. 16882

S.L. 1972

S.L. 17613

JEFFERSON PARISH
LAFOURCHE PARISH

TR 35332
2,462.00 ± ACS,
MAR., 2003

S.L. 17642

LAFOURCHE AND JEFFERSON PARISHES

P.O.B.
X= 2,362,336.27'
Y= 316,468.38'

TRACT 35333 - Plaquemines Parish, Louisiana

All of the lands now or formerly constituting the beds and bottoms of all water bodies of every nature and description, and all islands and other lands formed by accretion, where allowed by law, or by reliction, and excepting tax adjudicated lands, belonging to the State of Louisiana and not presently under mineral lease on March 12, 2003, situated in Plaquemines Parish, Louisiana, and more particularly described as follows: Beginning at a point having Coordinates of X = 2,480,445.04 and Y = 266,290.07; thence East approximately 5,490.00 feet to a point on the West line of State Lease No. 212, as amended; thence in a Southerly direction along the West line of said State Lease No. 212 to a point of intersection with the North line of that certain Agreement between Cockrell et al and the State of Louisiana, dated May 16, 1938, recorded at Book 88, Page 189; thence Westerly along the North line of said Agreement to a point of intersection with said State Lease No. 212; thence along the boundaries of the Western boundary of said State Lease No. 212 the following: Northwesterly, Southwesterly and Southeasterly to a point of intersection with the West line of said Agreement; thence Southerly approximately 5,512.00 feet to a point having Coordinates of X = 2,484,989.72 and Y = 254,198.07; thence West 4,544.68 feet to a point having Coordinates of X = 2,480,445.04 and Y = 254,198.07; thence North 12,092.00 feet to the point of beginning, **LESS AND EXCEPT**, if any, that certain Agreement between Cockrell et al and the State of Louisiana, and State Lease No. 212, as amended, containing approximately **628 acres**, all as more particularly outlined on a plat on file in the Office of Mineral Resources, Department of Natural Resources, as provided by the applicant. All bearings, distances and coordinates are based on Louisiana Coordinate System of 1927, (North or South Zone), where applicable.

NOTE: The above description of the Tract nominated for lease has been provided and corrected, where required, exclusively by the nomination party. Any mineral lease selected from this Tract and awarded by the Louisiana State Mineral Board shall be without warranty of any kind, either express, implied, or statutory, including, but not limited to, the implied warranties of merchantability and fitness for a particular purpose. Should the mineral lease awarded by the Louisiana State Mineral Board be subsequently modified, cancelled or abrogated due to the existence of conflicting leases, operating agreements, private claims or other future obligations or conditions which may affect all or any portion of the leased Tract, it shall not relieve the Lessee of the obligation to pay any bonus due thereon to the Louisiana State Mineral Board, nor shall the Louisiana State Mineral Board be obligated to refund any consideration paid by the Lessor prior to such modification, cancellation, or abrogation, including, but not limited to, bonuses, rentals and royalties.

NOTE: The Department of Wildlife and Fisheries has designated certain areas in the coastal waters of the State of Louisiana as Oyster Seed Bed Areas. The exact location of those Seed Bed Areas must be obtained from the Department of Wildlife and Fisheries and any work done under a mineral lease from the State of Louisiana may necessarily be conducted in

conformity with the rules and regulations promulgated by the said Department of Wildlife and Fisheries for Oyster Seed Bed Areas.

NOTE: The State of Louisiana does hereby reserve, and this lease shall be subject to, the imprescriptible right of surface use in the nature of a servitude in favor of the Department of Natural Resources, including its Offices and Commissions, for the sole purpose of implementing, constructing, servicing and maintaining approved coastal zone management and/or restoration projects. Utilization of any and all rights derived under this lease by the mineral lessee, its agents, successors or assigns, shall not interfere with nor hinder the reasonable surface use by the Department of Natural Resources, its Offices or Commissions, as herein above reserved.

Applicant: Mark A. O'Neal & Associates, Inc.

| Bidder | Cash Payment | Price / Acre | Rental | Oil | Gas | Other |
|--------|--------------|--------------|--------|-----|-----|-------|
| | | | | | | |
| | | | | | | |
| | | | | | | |
| | | | | | | |

POB X=2,480,445.04
Y=266,290.07

5,490.00'+\|-

12,092.00'

SL 212

GRANDE ECAILL

LAKE GRANDE

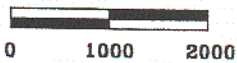
TR 35333
628 ± ACS.
MAR., 2003

Cockrell Moran/State of LA
Compromise Agmt

5,512.00'

4,544.68'

Note: a combination of the 1935 and 1994 quad maps were used to determine acreage due to the existence of private landowner leases that are still in production in this area (see attached information)



Scale: 1" = 2,000'

T20S/R26E
Plaquemines Parish, Louisiana

TRACT 35334 - Portion of Block 3, Main Pass Area, Revised, St. Bernard Parish, Louisiana

All of the lands now or formerly constituting the beds and bottoms of all water bodies of every nature and description, and all islands and other lands formed by accretion, where allowed by law, or by reliction, and excepting tax adjudicated lands, belonging to the State of Louisiana and not presently under mineral lease on March 12, 2003, situated in St. Bernard Parish, Louisiana, and more particularly described as follows: Beginning at the most Western point on the Eastern boundary of State Lease No. 17661 having Coordinates of X = 2,609,241.93 and Y = 380,129.44; thence North 56 degrees 54 minutes 41 seconds East 328.92 feet along the said Eastern boundary of State Lease No.17661 to a point having Coordinates of X = 2,609,517.51 and Y = 380,309.01; thence South 82 degrees 28 minutes 04 seconds East 1,105.86 feet to the most Westerly Northwest corner of the Western portion of State Lease No. 12789, as amended, having Coordinates of X = 2,610,613.83 and Y = 380,164.05; thence South 234.34 feet along the Western boundary of said State Lease No. 12789, as amended, to its Southwest corner, also being a point on the said Eastern boundary of State Lease No. 17661 having Coordinates of X = 2,610,613.83 and Y = 379,929.71; thence along the said Eastern boundary of State Lease No. 17661 the following courses: North 88 degrees 46 minutes 35 seconds West 273.04 feet to a point having Coordinates of X = 2,610,340.85 and Y = 379,935.54; North 81 degrees 33 minutes 07 seconds West 516.57 feet to a point having Coordinates of X = 2,609,829.89 and Y = 380,011.43; North 78 degrees 39 minutes 03 seconds West 599.69 feet to the point of beginning, containing approximately **7.12 acres**, all as more particularly outlined on a plat on file in the Office of Mineral Resources, Department of Natural Resources, as provided by the applicant. All bearings, distances and coordinates are based on Louisiana Coordinate System of 1927, (North or South Zone), where applicable.

NOTE: The above description of the Tract nominated for lease has been provided and corrected, where required, exclusively by the nomination party. Any mineral lease selected from this Tract and awarded by the Louisiana State Mineral Board shall be without warranty of any kind, either express, implied, or statutory, including, but not limited to, the implied warranties of merchantability and fitness for a particular purpose. Should the mineral lease awarded by the Louisiana State Mineral Board be subsequently modified, cancelled or abrogated due to the existence of conflicting leases, operating agreements, private claims or other future obligations or conditions which may affect all or any portion of the leased Tract, it shall not relieve the Lessee of the obligation to pay any bonus due thereon to the Louisiana State Mineral Board, nor shall the Louisiana State Mineral Board be obligated to refund any consideration paid by the Lessor prior to such modification, cancellation, or abrogation, including, but not limited to, bonuses, rentals and royalties.

NOTE: The Department of Wildlife and Fisheries has designated certain areas in the coastal waters of the State of Louisiana as Oyster Seed Bed Areas. The exact location of those Seed Bed Areas must be obtained from

the Department of Wildlife and Fisheries and any work done under a mineral lease from the State of Louisiana may necessarily be conducted in conformity with the rules and regulations promulgated by the said Department of Wildlife and Fisheries for Oyster Seed Bed Areas.

NOTE: The State of Louisiana does hereby reserve, and this lease shall be subject to, the imprescriptible right of surface use in the nature of a servitude in favor of the Department of Natural Resources, including its Offices and Commissions, for the sole purpose of implementing, constructing, servicing and maintaining approved coastal zone management and/or restoration projects. Utilization of any and all rights derived under this lease by the mineral lessee, its agents, successors or assigns, shall not interfere with nor hinder the reasonable surface use by the Department of Natural Resources, its Offices or Commissions, as herein above reserved.

Applicant: Stephen M. Jenkins & Associates, Inc.

| Bidder | Cash Payment | Price / Acre | Rental | Oil | Gas | Other |
|--------|--------------|--------------|--------|-----|-----|-------|
| | | | | | | |
| | | | | | | |
| | | | | | | |
| | | | | | | |



BLOCK 72

BLOCK 71

BLOCK 70

**CHANDELEUR
SOUND
AREA**

TR 35334
7.12 ± ACS.
MAR., 2007
AREA, Revised

P.O.B. — NAD 1927
X= 2,609,241.93'
Y= 380,129.44'

BLOCK 2

BLOCK 3

BLOCK 4

87

S.L. 17276

S.L. 16712

S.L. 6618

S.L. 13306

S.L. 17277

S.L. 17279

S.L. 16731

S.L. 17278

S.L. 12503

S.L. 12789

S.L. 16713

S.L. 17662

S.L. 17661

BLOCK 71 — BAS FIELD Platform

MISS. RIVER - GULF OUTLET FWY

Gardner Island

WALL

ST. BERNARD PARISH

MAIN PASS AREA, REVISED

Grace Point 2



6

31

30

TRACT 35335 - Portion of Block 3, Main Pass Area, Revised, St. Bernard Parish, Louisiana

All of the lands now or formerly constituting the beds and bottoms of all water bodies of every nature and description, and all islands and other lands formed by accretion, where allowed by law, or by reliction, and excepting tax adjudicated lands, belonging to the State of Louisiana and not presently under mineral lease on March 12, 2003, situated in March 12, 2003 Parish, Louisiana, and more particularly described as follows: Beginning at a point on the Eastern boundary of State Lease No. 17661 having Coordinates of X = 2,609,774.86 and Y = 380,476.68; thence North 82 degrees 56 minutes 50 seconds East 352.81 feet to a point having Coordinates of X = 2,610,125.00 and Y = 380,520.00; thence North 73 degrees 50 minutes 46 seconds East 1,509.60 feet to a point having Coordinates of X = 2,611,575.00 and Y = 380,940.00; thence North 81 degrees 34 minutes 23 seconds East 682.37 feet to a point having Coordinates of X = 2,612,250.00 and Y = 381,040.00; thence North 83 degrees 09 minutes 35 seconds East 770.84 feet to a point on the Northern boundary of the Western portion of State Lease No. 12789, as amended, having Coordinates of X = 2,613,015.35 and Y = 381,131.81; thence along the said Northern boundary of State Lease No. 12789, as amended, the following courses: South 48 degrees 51 minutes 42 seconds West 789.74 feet to a point having Coordinates of X = 2,612,420.58 and Y = 380,612.26; South 59 degrees 34 minutes 49 seconds West 595.18 feet to a point having Coordinates of X = 2,611,907.33 and Y = 380,310.90; South 73 degrees 38 minutes 48 seconds West 510.16 feet to a point having Coordinates of X = 2,611,417.81 and Y = 380,167.26; South 89 degrees 46 minutes 16 seconds West 803.99 feet to the most Westerly Northwest corner of said State Lease No. 12789, as amended, also being a point on the Eastern boundary of said State Lease No. 17661 having Coordinates of X = 2,610,613.83 and Y = 380,164.05; thence along the Eastern boundary of said State Lease No. 17661 the following courses: North 82 degrees 28 minutes 04 seconds West 1,105.86 feet to a point having Coordinates of X = 2,609,517.51 and Y = 380,309.01; North 56 degrees 54 minutes 49 seconds East 307.14 feet to the point of beginning, containing approximately **36.00 acres**, all as more particularly outlined on a plat on file in the Office of Mineral Resources, Department of Natural Resources, as provided by the applicant. All bearings, distances and coordinates are based on Louisiana Coordinate System of 1927, (North or South Zone), where applicable.

NOTE: The above description of the Tract nominated for lease has been provided and corrected, where required, exclusively by the nomination party. Any mineral lease selected from this Tract and awarded by the Louisiana State Mineral Board shall be without warranty of any kind, either express, implied, or statutory, including, but not limited to, the implied warranties of merchantability and fitness for a particular purpose. Should the mineral lease awarded by the Louisiana State Mineral Board be subsequently modified, cancelled or abrogated due to the existence of conflicting leases, operating agreements, private claims or other future obligations or conditions which may affect all or any portion of the leased Tract, it shall not relieve the Lessee of the obligation to

pay any bonus due thereon to the Louisiana State Mineral Board, nor shall the Louisiana State Mineral Board be obligated to refund any consideration paid by the Lessor prior to such modification, cancellation, or abrogation, including, but not limited to, bonuses, rentals and royalties.

NOTE: The Department of Wildlife and Fisheries has designated certain areas in the coastal waters of the State of Louisiana as Oyster Seed Bed Areas. The exact location of those Seed Bed Areas must be obtained from the Department of Wildlife and Fisheries and any work done under a mineral lease from the State of Louisiana may necessarily be conducted in conformity with the rules and regulations promulgated by the said Department of Wildlife and Fisheries for Oyster Seed Bed Areas.

NOTE: The State of Louisiana does hereby reserve, and this lease shall be subject to, the imprescriptible right of surface use in the nature of a servitude in favor of the Department of Natural Resources, including its Offices and Commissions, for the sole purpose of implementing, constructing, servicing and maintaining approved coastal zone management and/or restoration projects. Utilization of any and all rights derived under this lease by the mineral lessee, its agents, successors or assigns, shall not interfere with nor hinder the reasonable surface use by the Department of Natural Resources, its Offices or Commissions, as herein above reserved.

Applicant: Stephen M. Jenkins & Associates, Inc.

| Bidder | Cash Payment | Price / Acre | Rental | Oil | Gas | Other |
|--------|--------------|--------------|--------|-----|-----|-------|
| | | | | | | |
| | | | | | | |
| | | | | | | |
| | | | | | | |



BLOCK 70

BLOCK 4

90



S.L. 17276

S.L. 16712

S.L. 17278

S.L. 17279

S.L. 16731

S.L. 17277

S.L. 12503

S.L. 12789

S.L. 16713

TR 35335
36.00 ± ACS.
MAR., 2003

BLOCK 71 - GAS FIELD

S.L. 6618

Platform

S.L. 13306

S.L. 17662

BLOCK 3

Gardner Island

MISS. RIVER - GULF OUTLET FWY

Grace Point 2

BLOCK 71

P.O.B. - NAD 1927
X= 2,609,774.86'
Y= 380,476.68'

CHANDELEUR
SOUND
AREA

MAIN PASS
AREA, Revised

ST. BERNARD PARISH

MAIN PASS AREA, REVISED

BLOCK 72

31

6

BLOCK 2

TRACT 35336 - Portion of Block 3, Main Pass Area, Revised, St. Bernard Parish, Louisiana

All of the lands now or formerly constituting the beds and bottoms of all water bodies of every nature and description, and all islands and other lands formed by accretion, where allowed by law, or by reliction, and excepting tax adjudicated lands, belonging to the State of Louisiana and not presently under mineral lease on March 12, 2003, situated in St. Bernard Parish, Louisiana, and more particularly described as follows: Beginning at a point on the Eastern boundary of State Lease No. 17661 having Coordinates of X = 2,609,774.86 and Y = 380,476.68; thence North 56 degrees 54 minutes 48 seconds East 1,283.22 feet along the said Eastern boundary of State Lease No. 17661 to a point having Coordinates of X = 2,610,850.00 and Y = 381,177.20; thence South 447.20 feet to a point having Coordinates of X = 2,610,850.00 and Y = 380,730.00; thence South 73 degrees 50 minutes 46 seconds West 754.80 feet to a point having Coordinates of X = 2,610,125.00 and Y = 380,520.00; thence South 82 degrees 56 minutes 50 seconds West 352.81 feet to the point of beginning, containing approximately **6.00 acres**, all as more particularly outlined on a plat on file in the Office of Mineral Resources, Department of Natural Resources, as provided by the applicant. All bearings, distances and coordinates are based on Louisiana Coordinate System of 1927, (North or South Zone), where applicable.

NOTE: The above description of the Tract nominated for lease has been provided and corrected, where required, exclusively by the nomination party. Any mineral lease selected from this Tract and awarded by the Louisiana State Mineral Board shall be without warranty of any kind, either express, implied, or statutory, including, but not limited to, the implied warranties of merchantability and fitness for a particular purpose. Should the mineral lease awarded by the Louisiana State Mineral Board be subsequently modified, cancelled or abrogated due to the existence of conflicting leases, operating agreements, private claims or other future obligations or conditions which may affect all or any portion of the leased Tract, it shall not relieve the Lessee of the obligation to pay any bonus due thereon to the Louisiana State Mineral Board, nor shall the Louisiana State Mineral Board be obligated to refund any consideration paid by the Lessor prior to such modification, cancellation, or abrogation, including, but not limited to, bonuses, rentals and royalties.

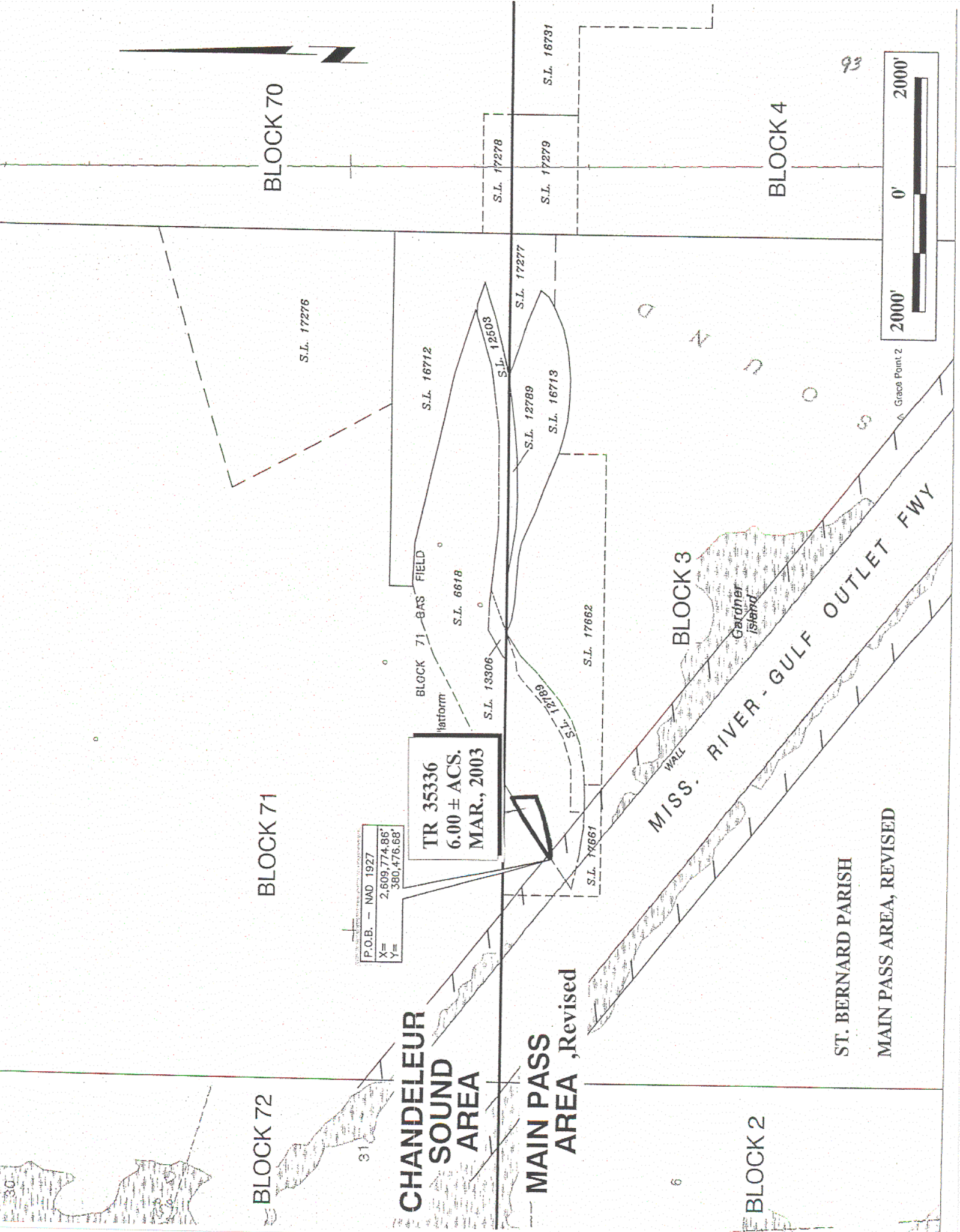
NOTE: The Department of Wildlife and Fisheries has designated certain areas in the coastal waters of the State of Louisiana as Oyster Seed Bed Areas. The exact location of those Seed Bed Areas must be obtained from the Department of Wildlife and Fisheries and any work done under a mineral lease from the State of Louisiana may necessarily be conducted in conformity with the rules and regulations promulgated by the said Department of Wildlife and Fisheries for Oyster Seed Bed Areas.

NOTE: The State of Louisiana does hereby reserve, and this lease shall be subject to, the imprescriptible right of surface use in the nature of a servitude in favor of the Department of Natural Resources, including its

Offices and Commissions, for the sole purpose of implementing, constructing, servicing and maintaining approved coastal zone management and/or restoration projects. Utilization of any and all rights derived under this lease by the mineral lessee, its agents, successors or assigns, shall not interfere with nor hinder the reasonable surface use by the Department of Natural Resources, its Offices or Commissions, as herein above reserved.

Applicant: Stephen M. Jenkins & Associates, Inc.

| Bidder | Cash Payment | Price / Acre | Rental | Oil | Gas | Other |
|--------|--------------|--------------|--------|-----|-----|-------|
| | | | | | | |
| | | | | | | |
| | | | | | | |
| | | | | | | |



BLOCK 70

BLOCK 4

BLOCK 71

BLOCK 3

BLOCK 72

BLOCK 2

**CHANDELEUR
SOUND
AREA**

**MAIN PASS
AREA, Revised**

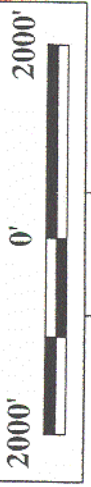
MISS. RIVER - GULF OUTLET FWY

ST. BERNARD PARISH

MAIN PASS AREA, REVISED

P.O.I. - NAD 1927
X= 2,609,774.86'
Y= 380,476.68'

TR 35336
6.00 ± ACS.
MAR., 2003



Grace Point 2

Gardner Island

WALL

BLOCK 71 - GAS FIELD platform

S.L. 17276

S.L. 16712

S.L. 6618

S.L. 13306

S.L. 17277

S.L. 17278

S.L. 17279

S.L. 16731

S.L. 12789

S.L. 16713

S.L. 17189

S.L. 17662

S.L. 17661

93

31

6

TRACT 35337 - Portion of Block 3, Main Pass Area, Revised, St. Bernard Parish, Louisiana

All of the lands now or formerly constituting the beds and bottoms of all water bodies of every nature and description, and all islands and other lands formed by accretion, where allowed by law, or by reliction, and excepting tax adjudicated lands, belonging to the State of Louisiana and not presently under mineral lease on March 12, 2003, situated in St. Bernard Parish, Louisiana, and more particularly described as follows: Beginning at a point on the North boundary of said Block 3, Main Pass Area, Revised, having Coordinates of X = 2,613,242.24 and Y = 381,330.00; thence South 48 degrees 51 minutes 45 seconds West 301.26 feet to the Northwest corner of the western portion of State Lease No. 12789, as amended, having Coordinates of X = 2,613,015.35 and Y = 381,131.81; thence South 83 degrees 09 minutes 35 seconds West 770.84 feet to a point having Coordinates of X = 2,612,250.00 and Y = 381,040.00; thence South 81 degrees 34 minutes 23 seconds West 682.37 feet to a point having Coordinates of X = 2,611,575.00 and Y = 380,940.00; thence South 73 degrees 50 minutes 46 seconds West 754.80 feet to a point having Coordinates of X = 2,610,850.00 and Y = 380,730.00; thence North 447.20 feet to a point on the Eastern boundary of State Lease No. 17661 having Coordinates of X = 2,610,850.00 and Y = 381,177.20; thence North 56 degrees 54 minutes 46 seconds East 279.90 feet along the Eastern boundary of said State Lease No. 17661 to its Northeast corner, said corner also being a point on the North Boundary of said Block 3, Main Pass Area Revised, having Coordinates of X = 2,611,084.51 and Y = 381,330.00; thence East 2,157.73 feet along the North boundary of said Block 3 to the point of beginning, containing approximately **17.90 acres**, all as more particularly outlined on a plat on file in the Office of Mineral Resources, Department of Natural Resources, as provided by the applicant. All bearings, distances and coordinates are based on Louisiana Coordinate System of 1927, (North or South Zone), where applicable.

NOTE: The above description of the Tract nominated for lease has been provided and corrected, where required, exclusively by the nomination party. Any mineral lease selected from this Tract and awarded by the Louisiana State Mineral Board shall be without warranty of any kind, either express, implied, or statutory, including, but not limited to, the implied warranties of merchantability and fitness for a particular purpose. Should the mineral lease awarded by the Louisiana State Mineral Board be subsequently modified, cancelled or abrogated due to the existence of conflicting leases, operating agreements, private claims or other future obligations or conditions which may affect all or any portion of the leased Tract, it shall not relieve the Lessee of the obligation to pay any bonus due thereon to the Louisiana State Mineral Board, nor shall the Louisiana State Mineral Board be obligated to refund any consideration paid by the Lessor prior to such modification, cancellation, or abrogation, including, but not limited to, bonuses, rentals and royalties.

NOTE: The Department of Wildlife and Fisheries has designated certain areas in the coastal waters of the State of Louisiana as Oyster Seed Bed

Areas. The exact location of those Seed Bed Areas must be obtained from the Department of Wildlife and Fisheries and any work done under a mineral lease from the State of Louisiana may necessarily be conducted in conformity with the rules and regulations promulgated by the said Department of Wildlife and Fisheries for Oyster Seed Bed Areas.

NOTE: The State of Louisiana does hereby reserve, and this lease shall be subject to, the imprescriptible right of surface use in the nature of a servitude in favor of the Department of Natural Resources, including its Offices and Commissions, for the sole purpose of implementing, constructing, servicing and maintaining approved coastal zone management and/or restoration projects. Utilization of any and all rights derived under this lease by the mineral lessee, its agents, successors or assigns, shall not interfere with nor hinder the reasonable surface use by the Department of Natural Resources, its Offices or Commissions, as herein above reserved.

Applicant: Stephen M. Jenkins & Associates, Inc.

| Bidder | Cash Payment | Price / Acre | Rental | Oil | Gas | Other |
|--------|--------------|--------------|--------|-----|-----|-------|
| | | | | | | |
| | | | | | | |
| | | | | | | |
| | | | | | | |



BLOCK 70

BLOCK 4



S.L. 17276

S.L. 16731

S.L. 17278

S.L. 17279

S.L. 17277

S.L. 16712

S.L. 12603

S.L. 12789

S.L. 16713

| |
|-------------------|
| P.O.B. - NAD 1927 |
| X= 2,613,242.24 |
| Y= 381,330.00 |

BLOCK 71 BAS FIELD

S.L. 6618

BLOCK 72

Platform

S.L. 13306

S.L. 12789

S.L. 17662

S.L. 17661

BLOCK 3

Gardner Island

MISS. RIVER - GULF OUTLET FWY

BLOCK 71

TR 35337
17.90 ± ACS.
MAR., 2003

CHANDELEUR SOUND AREA

MAIN PASS AREA, Revised

BLOCK 2

ST. BERNARD PARISH

MAIN PASS AREA, Revised

96

Grace Point 2

31

10

TRACT 35338 - Portion of Block 3, Main Pass Area, Revised, St. Bernard Parish, Louisiana

All of the lands now or formerly constituting the beds and bottoms of all water bodies of every nature and description, and all islands and other lands formed by accretion, where allowed by law, or by reliction, and excepting tax adjudicated lands, belonging to the State of Louisiana and not presently under mineral lease on March 12, 2003, situated in St. Bernard Parish, Louisiana, and more particularly described as follows: Beginning at a point on the North boundary of said Block 3, Main Pass Area, Revised, having Coordinates of X = 2,613,242.24 and Y = 381,330.00; thence East 477.76 feet along the said North boundary of Block 3 to the Northeast corner of the Western portion of State Lease No. 12789, as amended, having Coordinates of X = 2,613,720.00 and Y = 381,330.00; thence South 70 degrees 06 minutes 38 seconds West 499.81 feet along the North boundary of the said Western portion of State Lease No. 12789, as amended, to a point having Coordinates of X = 2,613,250.00 and Y = 381,159.96; thence South 83 degrees 09 minutes 33 seconds West 236.33 feet along the said Northern boundary of the Western portion of State Lease No. 12789, as amended, to its Northwest corner having Coordinates of X = 2,613,015.35 and Y = 381,131.81; thence North 48 degrees 51 minutes 45 seconds East 301.26 feet to the point of beginning, containing approximately **1.39 acres**, all as more particularly outlined on a plat on file in the Office of Mineral Resources, Department of Natural Resources, as provided by the applicant. All bearings, distances and coordinates are based on Louisiana Coordinate System of 1927, (North or South Zone), where applicable.

NOTE: The above description of the Tract nominated for lease has been provided and corrected, where required, exclusively by the nomination party. Any mineral lease selected from this Tract and awarded by the Louisiana State Mineral Board shall be without warranty of any kind, either express, implied, or statutory, including, but not limited to, the implied warranties of merchantability and fitness for a particular purpose. Should the mineral lease awarded by the Louisiana State Mineral Board be subsequently modified, cancelled or abrogated due to the existence of conflicting leases, operating agreements, private claims or other future obligations or conditions which may affect all or any portion of the leased Tract, it shall not relieve the Lessee of the obligation to pay any bonus due thereon to the Louisiana State Mineral Board, nor shall the Louisiana State Mineral Board be obligated to refund any consideration paid by the Lessor prior to such modification, cancellation, or abrogation, including, but not limited to, bonuses, rentals and royalties.

NOTE: The Department of Wildlife and Fisheries has designated certain areas in the coastal waters of the State of Louisiana as Oyster Seed Bed Areas. The exact location of those Seed Bed Areas must be obtained from the Department of Wildlife and Fisheries and any work done under a mineral lease from the State of Louisiana may necessarily be conducted in conformity with the rules and regulations promulgated by the said Department of Wildlife and Fisheries for Oyster Seed Bed Areas.

NOTE: The State of Louisiana does hereby reserve, and this lease shall be subject to, the imprescriptible right of surface use in the nature of a servitude in favor of the Department of Natural Resources, including its Offices and Commissions, for the sole purpose of implementing, constructing, servicing and maintaining approved coastal zone management and/or restoration projects. Utilization of any and all rights derived under this lease by the mineral lessee, its agents, successors or assigns, shall not interfere with nor hinder the reasonable surface use by the Department of Natural Resources, its Offices or Commissions, as herein above reserved.

Applicant: Stephen M. Jenkins & Associates, Inc.

| Bidder | Cash Payment | Price / Acre | Rental | Oil | Gas | Other |
|--------|--------------|--------------|--------|-----|-----|-------|
| | | | | | | |
| | | | | | | |
| | | | | | | |
| | | | | | | |



BLOCK 70

BLOCK 4



P.O.B. - NAD 1927
X= 2,613,242.24'
Y= 381,330.00'

TR 35338
1.39 ± ACS.
MAR., 2003

BLOCK 71

BLOCK 3

CHANDELEUR
SOUND
AREA

MAIN PASS
AREA, Revised

MISS. RIVER - GULF OUTLET FWY

ST. BERNARD PARISH
MAIN PASS AREA, REVISED

BLOCK 72

BLOCK 2

S.L. 17276

S.L. 16712

S.L. 6618

S.L. 13306

S.L. 12789

S.L. 17277

S.L. 17278

S.L. 17279

S.L. 16731

S.L. 12503

S.L. 12789

S.L. 16713

S.L. 17662

S.L. 17661

Platform

FIELD

Gardner Island

WALL

Grace Point 2

99

6

31

TRACT 35339 - Portion of Block 16, Main Pass Area, Revised, Plaquemines Parish, Louisiana

All of the lands now or formerly constituting the beds and bottoms of all water bodies of every nature and description, and all islands and other lands formed by accretion, where allowed by law, or by reliction, and excepting tax adjudicated lands, belonging to the State of Louisiana and not presently under mineral lease on March 12, 2003, situated in Plaquemines Parish, Louisiana, and more particularly described as follows: Beginning at the Northwest corner of Block 16, Main Pass Area, Revised, having Coordinates of X = 2,620,600.00 and Y = 351,830.00; thence East 7,375.00 feet along the North line of said Block 16 to a point having Coordinates of X = 2,627,975.00 and Y = 351,830.00; thence South 1,194.40 feet to a point on the West line of State Lease No. 17622 having Coordinates of X = 2,627,975.00 and Y = 350,635.60; thence along the boundary of said State Lease No. 17622 the following courses: South 22 degrees 42 minutes 31 seconds West 2,331.33 feet and South 76 degrees 27 minutes 05 seconds East 925.76 feet to a point having Coordinates of X = 2,627,975.00 and Y = 348,268.12; thence South 11,188.12 feet to a point on the South line of said Block 16 having Coordinates of X = 2,627,975.00 and Y = 337,080.00; thence West 7,375.00 feet along the South line of said Block 16 to its Southwest corner having Coordinates of X = 2,620,600.00 and Y = 337,080.00; thence North 6,906.00 feet along the West line of said Block 16 to the Northwest corner of State Lease No. 17624 having Coordinates of X = 2,620,600.00 and Y = 343,986.00; thence along the boundary of said State Lease No. 17624 the following courses: South 16 degrees 17 minutes 56 seconds East 1,068.96 feet, South 49 degrees 33 minutes 48 seconds East 1,510.93 feet, and North 22 degrees 40 minutes 04 seconds East 2,682.19 feet to its Northeast corner, also being the Southeast corner of State Lease No. 17621 having Coordinates of X = 2,623,083.68 and Y = 344,455.00; thence along the boundary of said State Lease No. 17621 the following courses: North 22 degrees 39 minutes 56 seconds East 81.28 feet, North 25 degrees 31 minutes 58 seconds West 2,482.44 feet, and South 56 degrees 41 minutes 44 seconds West 1,728.96 feet to its Northwest corner, also being a point on the West line of said Block 16 having Coordinates of X = 2,620,600.00 and Y = 345,820.65; thence North 6,009.35 feet to the point of beginning, containing approximately **2,293.91 acres**, all as more particularly outlined on a plat on file in the Office of Mineral Resources, Department of Natural Resources, as provided by the applicant. All bearings, distances and coordinates are based on Louisiana Coordinate System of 1927, (North or South Zone), where applicable.

NOTE: The above description of the Tract nominated for lease has been provided and corrected, where required, exclusively by the nomination party. Any mineral lease selected from this Tract and awarded by the Louisiana State Mineral Board shall be without warranty of any kind, either express, implied, or statutory, including, but not limited to, the implied warranties of merchantability and fitness for a particular purpose. Should the mineral lease awarded by the Louisiana State Mineral Board be subsequently modified, cancelled or abrogated due to the

existence of conflicting leases, operating agreements, private claims or other future obligations or conditions which may affect all or any portion of the leased Tract, it shall not relieve the Lessee of the obligation to pay any bonus due thereon to the Louisiana State Mineral Board, nor shall the Louisiana State Mineral Board be obligated to refund any consideration paid by the Lessor prior to such modification, cancellation, or abrogation, including, but not limited to, bonuses, rentals and royalties.

NOTE: The State of Louisiana does hereby reserve, and this lease shall be subject to, the imprescriptible right of surface use in the nature of a servitude in favor of the Department of Natural Resources, including its Offices and Commissions, for the sole purpose of implementing, constructing, servicing and maintaining approved coastal zone management and/or restoration projects. Utilization of any and all rights derived under this lease by the mineral lessee, its agents, successors or assigns, shall not interfere with nor hinder the reasonable surface use by the Department of Natural Resources, its Offices or Commissions, as herein above reserved.

Applicant: Palmer & Palmer

| Bidder | Cash Payment | Price / Acre | Rental | Oil | Gas | Other |
|--------|--------------|--------------|--------|-----|-----|-------|
| | | | | | | |
| | | | | | | |
| | | | | | | |
| | | | | | | |

SL 16172

Bik. 10

Bik. 9

St. Bernard Parish
Plaquemines Parish

102

Bik. 16

P. O. B.
X=2,620,600.00
Y= 351,830.00

TR 35339
2,293.91 ± ACS.
MAR., 2003

SL 17622

SL 16894

SL 17623

SL 17621

Bik. 17

Bik. 15

SL 17624

Bik. 16

MAIN PASS AREA, REVISED

BRETON SOUND AREA

SL 16895

GULF OF MEXICO

SL 17301

SL 4708,
As Amended

Plaquemines Parish, Louisiana

3000' 0' 3000'

NAD 27
LAMBERT LA. SOUTH ZONE

TRACT 35340 - Portion of Block 15, Main Pass Area, Revised, Plaquemines Parish, Louisiana

All of the lands now or formerly constituting the beds and bottoms of all water bodies of every nature and description, and all islands and other lands formed by accretion, where allowed by law, or by reliction, and excepting tax adjudicated lands, belonging to the State of Louisiana and not presently under mineral lease on March 12, 2003, situated in Plaquemines Parish, Louisiana, and more particularly described as follows: Beginning at the Northeast corner of Block 15, Main Pass Area, Revised, having Coordinates of X = 2,620,600.00 and Y = 351,830.00; thence South 6,009.35 feet along the East line of said Block 15 to the North corner of State Lease No. 17623 having Coordinates of X = 2,620,600.00 and Y = 345,820.65; thence along the boundary of said State Lease No. 17623 the following courses: South 56 degrees 41 minutes 42 seconds West 538.43 feet and South 16 degrees 17 minutes 56 seconds East 1,603.44 feet to its South corner, also being a point on the East line of said Block 15, having Coordinates of X = 2,620,600.00 and Y = 343,986.00; thence South 6,906.00 feet along the East line of said Block 15 to its Southeast corner having Coordinates of X = 2,620,600.00 and Y = 337,080.00; thence West 7,375.00 feet along the South line of said Block 15 to a point having Coordinates of X = 2,613,225.00 and Y = 337,080.00; thence North 14,750.00 feet to a point on the North line of said Block 15 having Coordinates of X = 2,613,225.00 and Y = 351,830.00; thence East 7,375.00 feet to the point of beginning, containing approximately **2,487.80 acres**, all as more particularly outlined on a plat on file in the Office of Mineral Resources, Department of Natural Resources, as provided by the applicant. All bearings, distances and coordinates are based on Louisiana Coordinate System of 1927, (North or South Zone), where applicable.

NOTE: The above description of the Tract nominated for lease has been provided and corrected, where required, exclusively by the nomination party. Any mineral lease selected from this Tract and awarded by the Louisiana State Mineral Board shall be without warranty of any kind, either express, implied, or statutory, including, but not limited to, the implied warranties of merchantability and fitness for a particular purpose. Should the mineral lease awarded by the Louisiana State Mineral Board be subsequently modified, cancelled or abrogated due to the existence of conflicting leases, operating agreements, private claims or other future obligations or conditions which may affect all or any portion of the leased Tract, it shall not relieve the Lessee of the obligation to pay any bonus due thereon to the Louisiana State Mineral Board, nor shall the Louisiana State Mineral Board be obligated to refund any consideration paid by the Lessor prior to such modification, cancellation, or abrogation, including, but not limited to, bonuses, rentals and royalties.

NOTE: The State of Louisiana does hereby reserve, and this lease shall be subject to, the imprescriptible right of surface use in the nature of a servitude in favor of the Department of Natural Resources, including its Offices and Commissions, for the sole purpose of implementing, constructing, servicing and maintaining approved coastal zone management

and/or restoration projects. Utilization of any and all rights derived under this lease by the mineral lessee, its agents, successors or assigns, shall not interfere with nor hinder the reasonable surface use by the Department of Natural Resources, its Offices or Commissions, as herein above reserved.

Applicant: Palmer & Palmer

| Bidder | Cash Payment | Price / Acre | Rental | Oil | Gas | Other |
|--------|--------------|--------------|--------|-----|-----|-------|
| | | | | | | |
| | | | | | | |
| | | | | | | |
| | | | | | | |

SL 16730

BIK. 10

SL 16172

BIK. 9¹⁰⁵

SL 16390

P. O. B.
X=2,620,600.00
Y= 351,830.00

BIK. 15

SL 17623

SL 17621

BIK. 16

TR 35340
2,487.80 ± ACS.
MAR., 2003

SL 17624

SL 16635

SL 16684

BIK. 22

BIK. 21

SL 16689

GULF OF MEXICO
MAIN PASS AREA, REVISED

SL 17247

SL 16430

NAD 27
LAMBERT LA. SOUTH ZONE

Plaquemines Parish, Louisiana

3000' 0' 3000'

TRACT 35341 - Portion of Block 21, Main Pass Area, Revised, Plaquemines Parish, Louisiana

All of the lands now or formerly constituting the beds and bottoms of all water bodies of every nature and description, and all islands and other lands formed by accretion, where allowed by law, or by reliction, and excepting tax adjudicated lands, belonging to the State of Louisiana and not presently under mineral lease on March 12, 2003, situated in Plaquemines Parish, Louisiana, and more particularly described as follows: Beginning at the Southeast corner of Block 21, Main Pass Area, Revised, having Coordinates of X = 2,635,350.00 and Y = 322,330.00; thence West 7,375.00 feet along the South line of said Block 21 to a point having Coordinates of X = 2,627,975.00 and Y = 322,330.00; thence North 3,871.86 feet to the Southeast corner of State Lease No. 17247 having Coordinates of X = 2,627,975.00 and Y = 326,201.86; thence North 4,464.14 feet along the East line of said State Lease No. 17247 to its Northeast corner having Coordinates of X = 2,627,975.00 and Y = 330,666.00; thence North 6,414.00 feet to a point on the North line of said Block 21 having Coordinates of X = 2,627,975.00 and Y = 337,080.00; thence East 7,375.00 feet along the North line of said Block 21 to its Northeast corner having Coordinates of X = 2,635,350.00 and Y = 337,080.00; thence South 1,900.00 feet to the Northeast corner of State Lease No. 4708, as amended having Coordinates of X = 2,635,350.00 and Y = 335,180.00; thence along the boundary of said State Lease No. 4708 the following courses: South 68 degrees 11 minutes 55 seconds West 2,154.07 feet, South 63 degrees 26 minutes 06 seconds West 1,118.03 feet, South 57 degrees 59 minutes 41 seconds West 943.40 feet, South 45 degrees 00 minutes 00 seconds West 707.11 feet, South 30 degrees 57 minutes 50 seconds West 583.10 feet, South 21 degrees 48 minutes 05 seconds West 538.52 feet, and South 00 degrees 00 minutes 03 seconds East 366.94 feet to the most Northerly Northeast corner of State Lease No. 15536, as amended having Coordinates of X = 2,630,550.00 and Y = 331,513.05; thence along the boundary of said State Lease No. 15536 the following courses: West 1,673.00 feet, South 3,835.05 feet, East 3,591.00 feet, and North 13 degrees 38 minutes 58 seconds West 2,188.41 feet to its most Easterly Northeast corner, also being a point on the boundary of said State Lease No. 4708 having Coordinates of X = 2,631,951.58 and Y = 329,804.60; thence along the boundary of said State Lease No. 4708 the following courses: South 75 degrees 57 minutes 50 seconds East 513.75 feet, East 500.00 feet, and North 85 degrees 14 minutes 11 seconds East 2,408.33 feet to its Southeast corner, also being a point on the East line of said Block 21 having Coordinates of X = 2,635,350.00 and Y = 329,880.00; thence South 7,550.00 feet to the point of beginning, containing approximately **1,799.15 acres**, all as more particularly outlined on a plat on file in the Office of Mineral Resources, Department of Natural Resources, as provided by the applicant. All bearings, distances and coordinates are based on Louisiana Coordinate System of 1927, (North or South Zone), where applicable.

NOTE: The above description of the Tract nominated for lease has been provided and corrected, where required, exclusively by the nomination party. Any mineral lease selected from this Tract and awarded by the

Louisiana State Mineral Board shall be without warranty of any kind, either express, implied, or statutory, including, but not limited to, the implied warranties of merchantability and fitness for a particular purpose. Should the mineral lease awarded by the Louisiana State Mineral Board be subsequently modified, cancelled or abrogated due to the existence of conflicting leases, operating agreements, private claims or other future obligations or conditions which may affect all or any portion of the leased Tract, it shall not relieve the Lessee of the obligation to pay any bonus due thereon to the Louisiana State Mineral Board, nor shall the Louisiana State Mineral Board be obligated to refund any consideration paid by the Lessor prior to such modification, cancellation, or abrogation, including, but not limited to, bonuses, rentals and royalties.

NOTE: The State of Louisiana does hereby reserve, and this lease shall be subject to, the imprescriptible right of surface use in the nature of a servitude in favor of the Department of Natural Resources, including its Offices and Commissions, for the sole purpose of implementing, constructing, servicing and maintaining approved coastal zone management and/or restoration projects. Utilization of any and all rights derived under this lease by the mineral lessee, its agents, successors or assigns, shall not interfere with nor hinder the reasonable surface use by the Department of Natural Resources, its Offices or Commissions, as herein above reserved.

Applicant: Palmer & Palmer

| Bidder | Cash Payment | Price / Acre | Rental | Oil | Gas | Other |
|--------|--------------|--------------|--------|-----|-----|-------|
| | | | | | | |
| | | | | | | |
| | | | | | | |
| | | | | | | |

108

BIK. 15

BIK. 16

SL 16895

BIK. 17

TR 35341
1,799.15 ± ACS.
MAR., 2003

SL 17301

BIK. 22

SL 4708
As Amended

BIK. 32

SL 17247

SL 1227
As Amended

BIK. 21

SL 15536
As Amended

MAIN PASS AREA, REVISED
BRETON SOUND AREA

SL 16431

SL 16931

SL 16932

P. O. B.
X=2, 635, 350.00
Y= 322, 330.00

BIK. 25

SL 16933

BIK. 26

SL 16935

BIK. 33

SL 17385

GULF OF MEXICO

NAD 27
LAMBERT LA. SOUTH ZONE

Plaquemines Parish, Louisiana

3000' 0' 3000'